

REF. DES.	QTY	VALUE
F1	1	100K
F2	1	100K
F3	1	100K
F4	1	100K
T1	1	100K

REF DES NOT USED:
 C85,C86,D12,D13,J10,J17,J20,JW1-6,
 JW100,R43,R56,R59, R63,R133,R134,
 R135,R143,U5

LAST USED REF DES:
 C88,D31,F2,J21,JW109,L1,P16,Q9,
 R146,RC2,SW6,T2,U7,W3,VR2,X6

CAUTION:
 THIS SCHEMATIC IS PROVIDED FOR USE BY QUALIFIED PERSONNEL TO AVOID RISK OF ELECTRIC SHOCK, REFER SERVICING TO QUALIFIED SERVICE PERSONNEL. DO NOT PERFORM ANY SERVICING BEYOND THAT EXPLAINED IN THE OPERATING INSTRUCTIONS.

NOTES:
 1) CAUTION: SHOCK HAZARD!! THIS UNIT CONTAINS HAZARDOUS VOLTAGE. DISCONNECT POWER AND BE SURE POWER SUPPLY IS DISCHARGED BEFORE TOUCHING INTERNAL PARTS.
 2) UNLESS NOTED, RESISTOR VALUES IN OHMS, 1/4W-5% TOL. CAPACITOR VALUES IN MICROFARADS, 50V-10% TOL.
 3) VOLTAGES ARE MEASURED WITH 1 MEGOHM OSCILLOSCOPE AND 10 MEGOHM DIGITAL VOLTMETER.

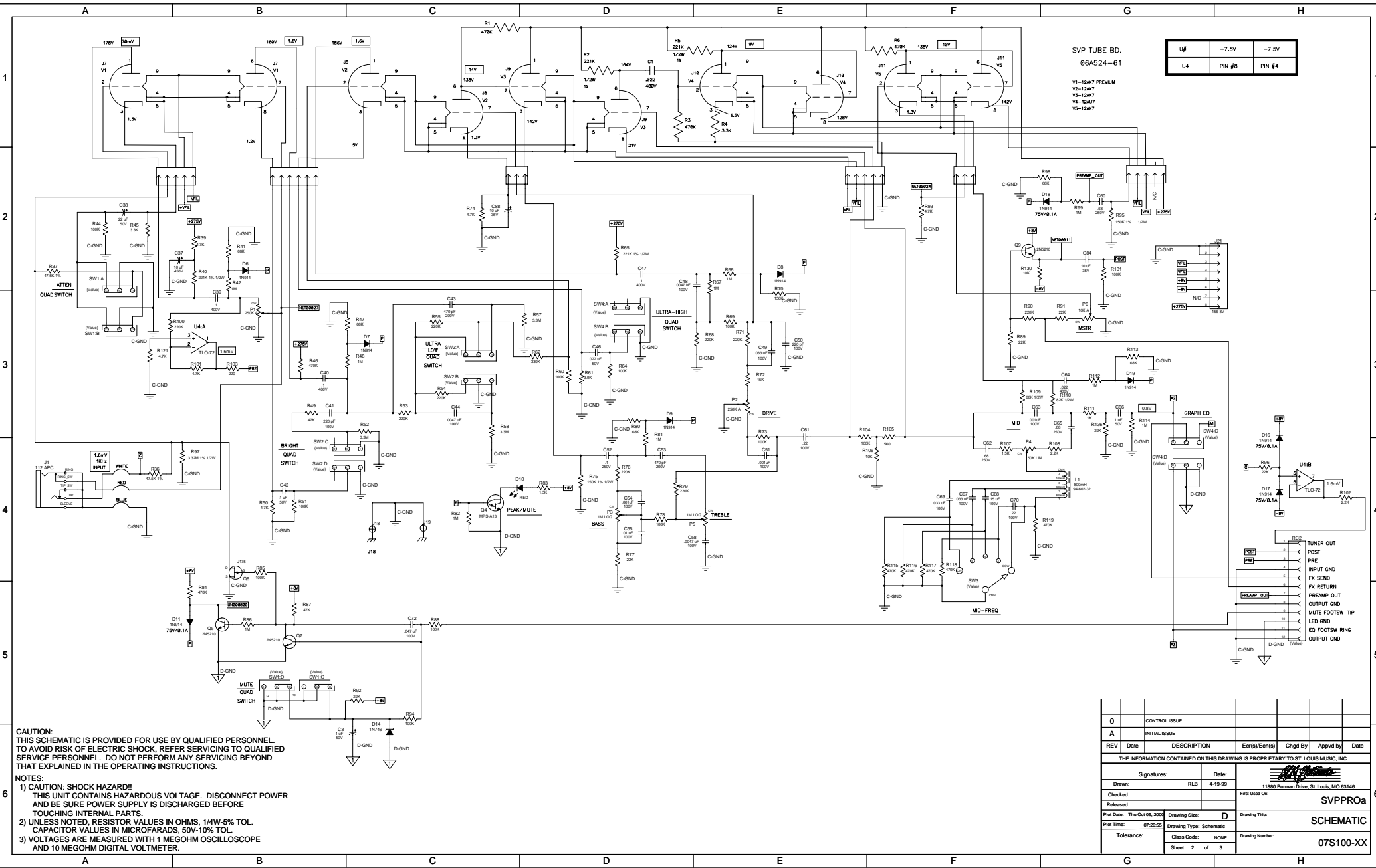
- VOLTAGES IN RECTANGLES ARE PEAK TO PEAK SIGNAL VOLTAGES. OTHER VOLTAGES ARE D.C.
- TEST CONDITIONS: GAIN, MASTER & LEVEL @ 10, DRIVE @ 0, TONES FLAT, AND BUTTONS OUT.
- CIRCUIT GND LED GND CHASSIS GND

REV	Date	DESCRIPTION	Ecr(s)/Ecrn(a)	Chgd By	Appvd by	Date
0		CONTROL ISSUE				
A		INITIAL ISSUE				

THE INFORMATION CONTAINED ON THIS DRAWING IS PROPRIETARY TO ST. LOUIS MUSIC, INC.

Drawn: RLB Date: 4-19-99
 Checked: RLB
 Released: 11880 Roman Drive, St. Louis, MO 63146
 First Used On: SVPPROa

Plot Date: The Oct 05, 2004 Drawing Size: D Drawing Title: SCHEMATIC
 Plot Time: 07:26:53 Drawing Type: Schematic Class Code: NONE
 Tolerance: Sheet 1 of 3 Drawing Number: 07S100-XX



SVP TUBE BD.
06A524-61

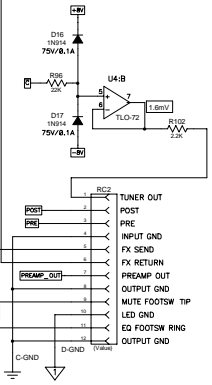
U#	+7.5V	-7.5V
U4	PIN #8	PIN #4

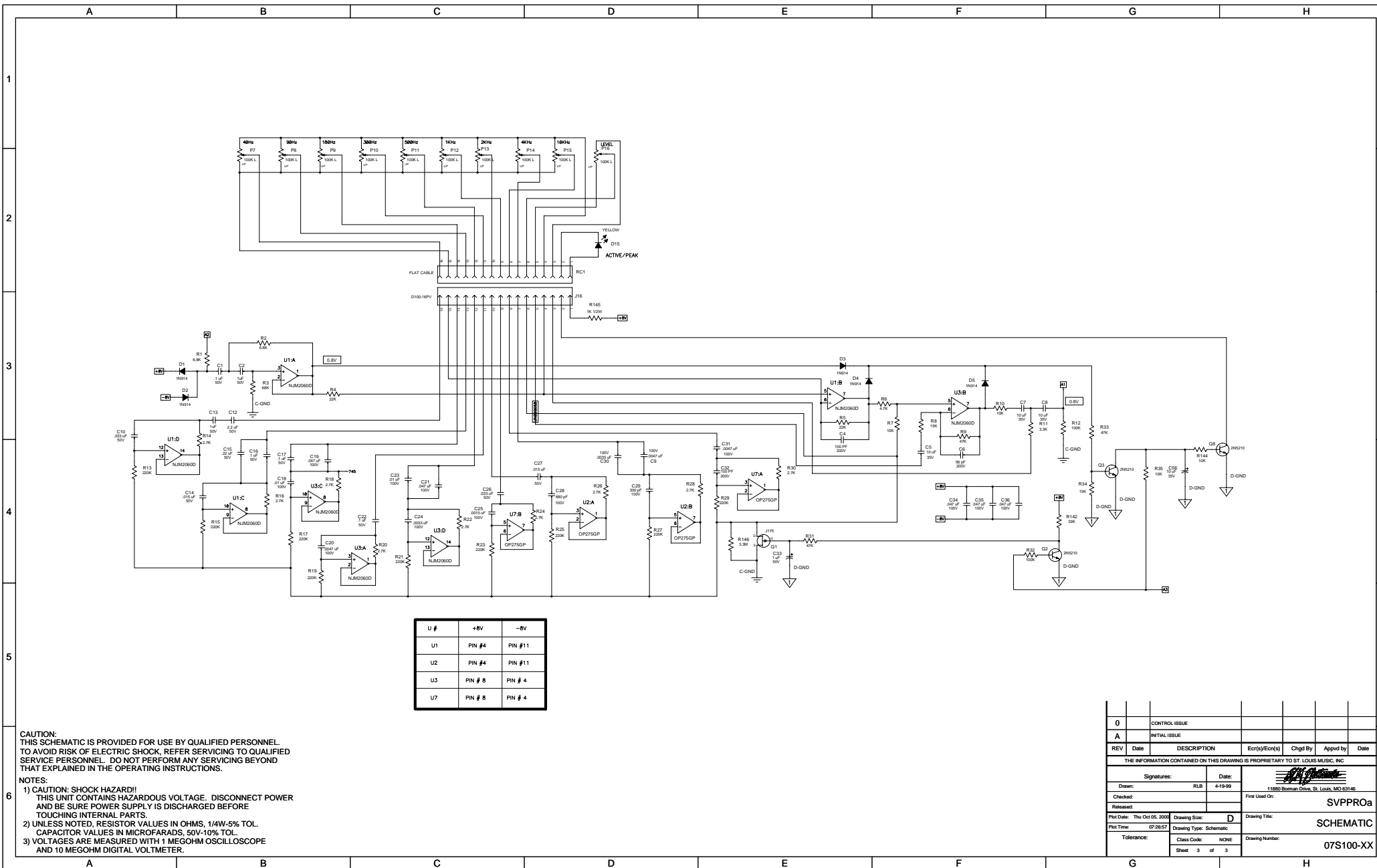
V1-12X7 PREMIUM
V2-12X7
V3-12X7
V4-12X7
V5-12X7

CAUTION:
THIS SCHEMATIC IS PROVIDED FOR USE BY QUALIFIED PERSONNEL.
TO AVOID RISK OF ELECTRIC SHOCK, REFER SERVICING TO QUALIFIED
SERVICE PERSONNEL. DO NOT PERFORM ANY SERVICING BEYOND
THAT EXPLAINED IN THE OPERATING INSTRUCTIONS.

- NOTES:**
- 1) CAUTION: SHOCK HAZARD!!
THIS UNIT CONTAINS HAZARDOUS VOLTAGE. DISCONNECT POWER
AND BE SURE POWER SUPPLY IS DISCHARGED BEFORE
TOUCHING INTERNAL PARTS.
 - 2) UNLESS NOTED, RESISTOR VALUES IN OHMS, 1/4W-5% TOL.
CAPACITOR VALUES IN MICROFARADS, 50V-10% TOL.
 - 3) VOLTAGES ARE MEASURED WITH 1 MEGOHM OSCILLOSCOPE
AND 10 MEGOHM DIGITAL VOLTMETER.

0	CONTROL ISSUE				
A	INITIAL ISSUE				
REV	Date	DESCRIPTION	Ecn(s)/Ecn(s)	Chgd By	Appvd by
THE INFORMATION CONTAINED ON THIS DRAWING IS PROPRIETARY TO ST. LOUIS MUSIC, INC.					
Signatures:		Date:			
Drawn: RLB		4-19-99		11880 Borman Drive, St. Louis, MO 63146	
Checked:		Released:		First Used On:	
Plot Date: Thu Oct 06, 2000		Drawing Size: D		Drawing Title:	
Plot Time: 07:26:55		Drawing Type: Schematic		SCHEMATIC	
Tolerance:		Class Code: NONE		Drawing Number:	
Sheet 2 of 3				07S100-XX	





U #	+8V	-8V
U1	PIN #4	PIN #11
U2	PIN #4	PIN #11
U3	PIN # 8	PIN # 4
U7	PIN # 8	PIN # 4

CAUTION:
THIS SCHEMATIC IS PROVIDED FOR USE BY QUALIFIED PERSONNEL TO AVOID RISK OF ELECTRIC SHOCK. REFER SERVICING TO QUALIFIED SERVICE PERSONNEL. DO NOT PERFORM ANY SERVICING BEYOND THAT EXPLAINED IN THE OPERATING INSTRUCTIONS.

- NOTES:**
- 1) CAUTION: SHOCK HAZARD!! THIS UNIT CONTAINS HAZARDOUS VOLTAGE. DISCONNECT POWER AND BE SURE POWER SUPPLY IS DISCHARGED BEFORE TOUCHING INTERNAL PARTS.
 - 2) UNLESS NOTED, RESISTOR VALUES IN OHMS, 1/4W-5% TOL. CAPACITOR VALUES IN MICROFARADS, 50V-10% TOL.
 - 3) VOLTAGES ARE MEASURED WITH 1 MEGOHM OSCILLOSCOPE AND 10 MEGOHM DIGITAL VOLTMETER.

REV	Date	DESCRIPTION	Ecr(s)/Ecn(s)	Chgd By	Appvd by	Date
0		CONTROL ISSUE				
A		INITIAL ISSUE				

THE INFORMATION CONTAINED ON THIS DRAWING IS PROPRIETARY TO ST. LOUIS MUSIC, INC.

Drawn:	RLB	Date:	4-19-99
Checked:		Released:	
Per Date:	Thu Oct 05, 2000	Drawing Size:	D
Per Time:	07:26:57	Drawing Type:	Schematic
Tolerance:	Class Code: NONE	Sheet:	3 of 3

First Used On: SVPPROa
18880 Borman Drive, St. Louis, MO 63146
SCHEMATIC
07S100-XX