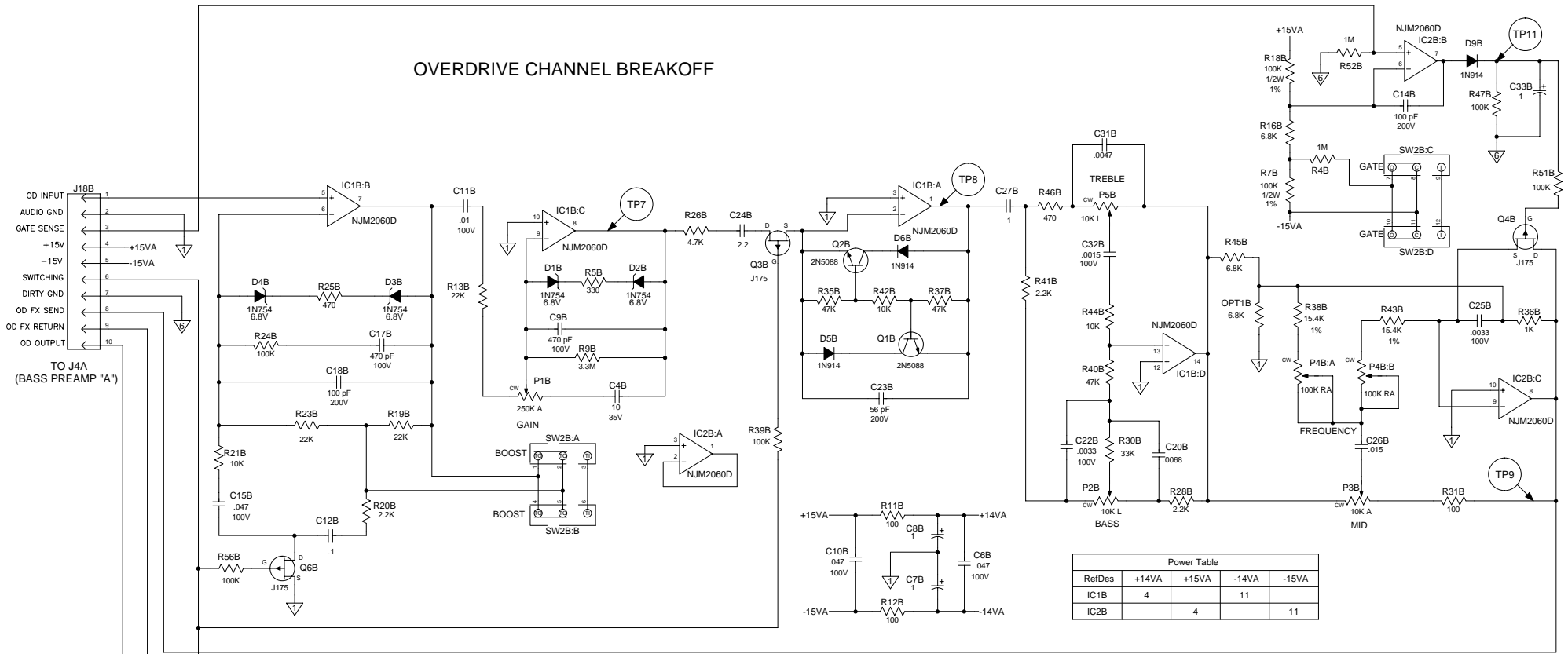


# OVERDRIVE CHANNEL BREAKOFF



Power Table				
RefDes	+14VA	+15VA	-14VA	-15VA
IC1B	4		11	
IC2B		4		11

T.P.	AC VOLTAGE	DC VOLTAGE	WAVEFORM	CONDITIONS:
TP4	--	12V		
TP4	--	0V		MUTE BUTTON "IN"
TP5	1.3V pp	0V		
TP6	5.8V pp	0V		
TP7	.09V pp	0V		
TP7	.8V pp	0V		BOOST BUTTON "IN"
TP9	.3V pp	0V		
TP10	2.4V pp	0V		CHAN. SELECT BUTTON "IN"
TP11	--	14V		
TP11	--	0V		GATE BUTTON "IN" W/O SIGNAL

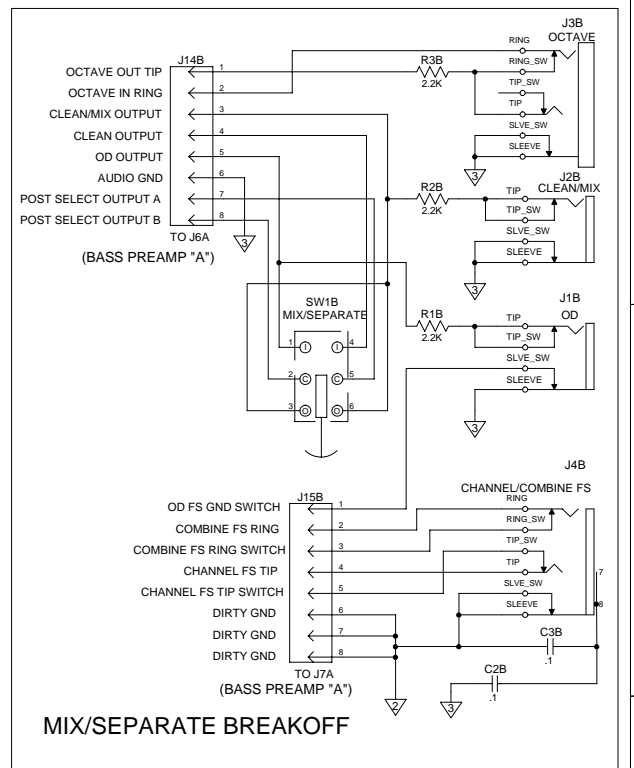
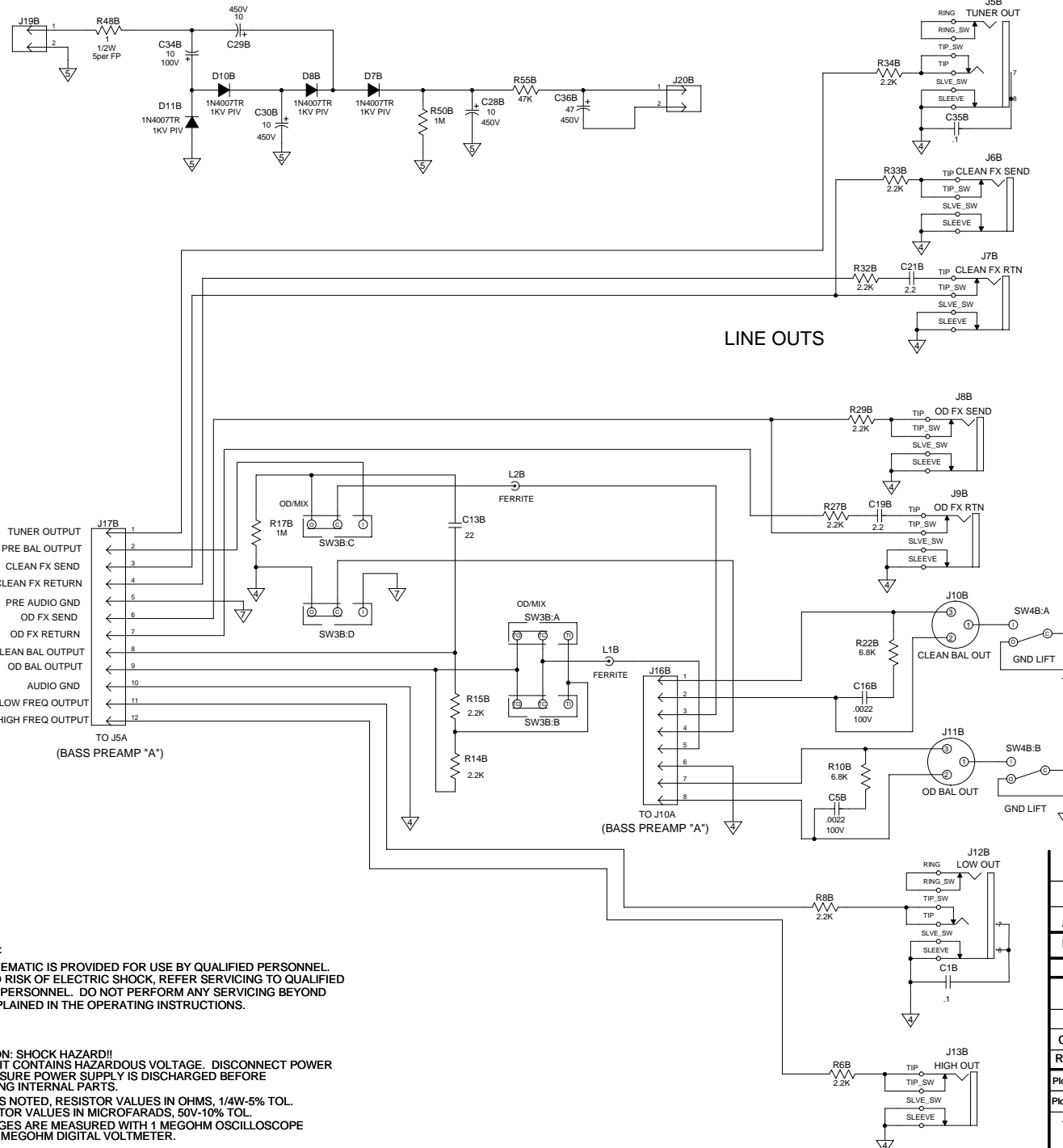
- TEST POINT CONDITIONS**
- 1 KHZ 35mVrms INPUT SIGNAL
  - CLEAN GAIN, VOLUMES, MASTER @ "10"
  - OVERDRIVE GAIN, TONES @ "5"
  - BUTTONS "OUT"
  - \* TEST POINT ON 07565-XX SCHEMATIC

ASSEMBLY PART NUMBER 07-566-01  
ASSEMBLY DWG NUMBER 07-566-XX

**CAUTION:**  
THIS SCHEMATIC IS PROVIDED FOR USE BY QUALIFIED PERSONNEL. TO AVOID RISK OF ELECTRIC SHOCK, REFER SERVICING TO QUALIFIED SERVICE PERSONNEL. DO NOT PERFORM ANY SERVICING BEYOND THAT EXPLAINED IN THE OPERATING INSTRUCTIONS.

- NOTES:**
- 1) CAUTION: SHOCK HAZARD!! THIS UNIT CONTAINS HAZARDOUS VOLTAGE. DISCONNECT POWER AND BE SURE POWER SUPPLY IS DISCHARGED BEFORE TOUCHING INTERNAL PARTS.
  - 2) UNLESS NOTED, RESISTOR VALUES IN OHMS, 1/4W-5% TOL. CAPACITOR VALUES IN MICROFARADS, 50V-10% TOL.
  - 3) VOLTAGES ARE MEASURED WITH 1 MEGOHM OSCILLOSCOPE AND 10 MEGOHM DIGITAL VOLTMETER.

0	10/31/01	CONTROL ISSUE				
A	7/26/01	INITIAL ISSUE				
REV	Date	DESCRIPTION	Ecr(s)/Ecn(s)	Chgd By	Appvd by	Date
THE INFORMATION CONTAINED ON THIS DRAWING IS PROPRIETARY TO ST. LOUIS MUSIC, INC.						
Signatures:		Date:		 11880 Borman Drive, St. Louis, MO 63146		
Drawn: WFB		5/15/01				
Checked:				First Used On:		
Released:				<b>SVT5PROa</b>		
Plot Date: Wed Oct 31, 2001		Drawing Size: C		Drawing Title:		
Plot Time: 10:45:22		Drawing Type: Schematic		<b>BASS PREAMP B</b>		
Tolerance:		Class Code: NONE		Drawing Number:		
Sheet 1 of 2				<b>07s566-xx</b>		



**CAUTION:**  
THIS SCHEMATIC IS PROVIDED FOR USE BY QUALIFIED PERSONNEL TO AVOID RISK OF ELECTRIC SHOCK. REFER SERVICING TO QUALIFIED SERVICE PERSONNEL. DO NOT PERFORM ANY SERVICING BEYOND THAT EXPLAINED IN THE OPERATING INSTRUCTIONS.

**NOTES:**  
1) CAUTION: SHOCK HAZARD!! THIS UNIT CONTAINS HAZARDOUS VOLTAGE. DISCONNECT POWER AND BE SURE POWER SUPPLY IS DISCHARGED BEFORE TOUCHING INTERNAL PARTS.  
2) UNLESS NOTED, RESISTOR VALUES IN OHMS, 1/4W-5% TOL. CAPACITOR VALUES IN MICROFARADS, 50V-10% TOL.  
3) VOLTAGES ARE MEASURED WITH 1 MEGOHM OSCILLOSCOPE AND 10 MEGOHM DIGITAL VOLTMETER.

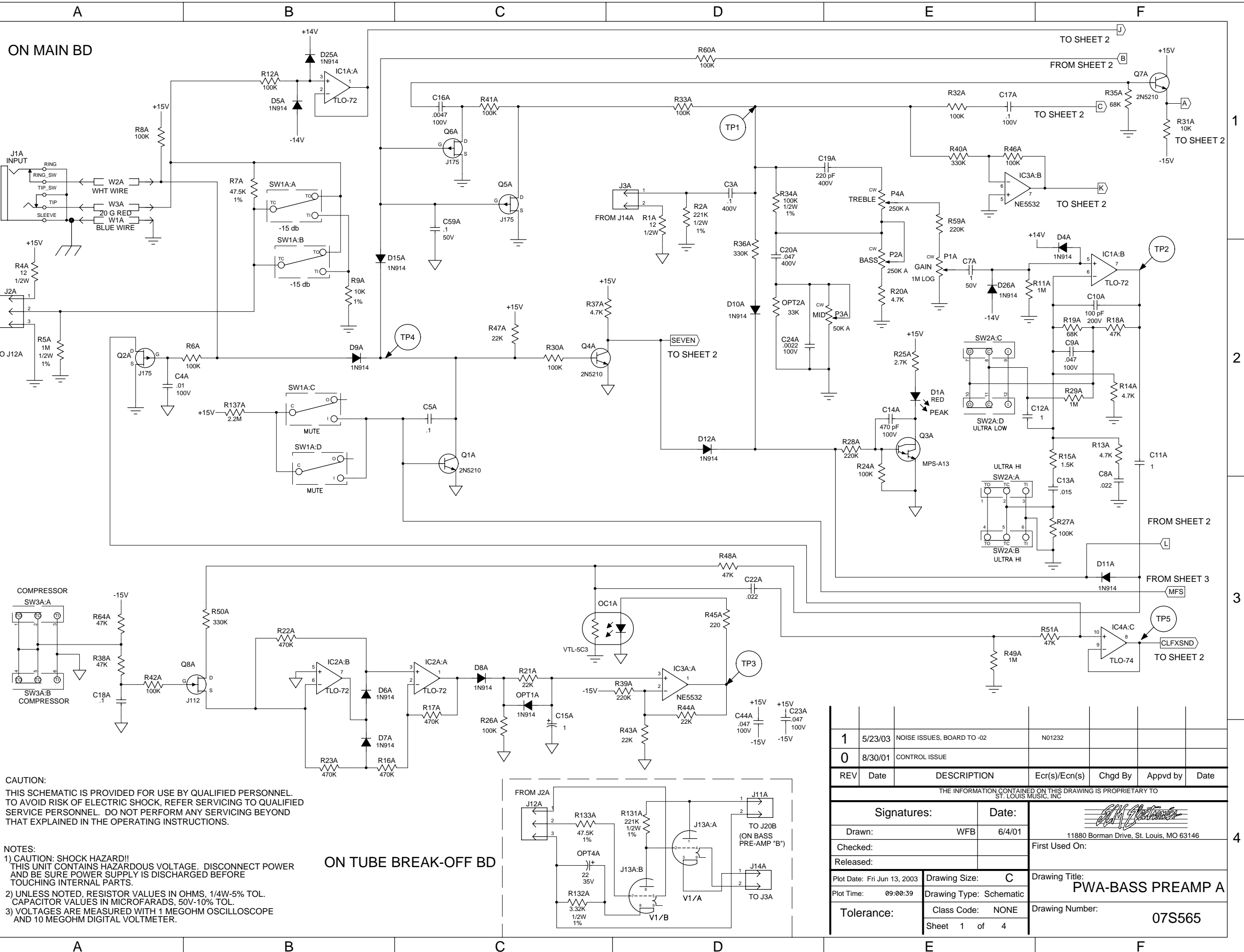
0	10/31/01	CONTROL ISSUE				
A	7/26/01	INITIAL ISSUE				
REV	Date	DESCRIPTION	Ecr(s)/Ecn(s)	Chgd By	Appvd by	Date
THE INFORMATION CONTAINED ON THIS DRAWING IS PROPRIETARY TO ST. LOUIS MUSIC, INC						
Signatures:		Date:		 11880 Borman Drive, St. Louis, MO 63146		
Drawn: WFB		5/15/01				
Checked:						
Released:				First Used On: SVT5PROa		
Plot Date: Wed Oct 31, 2001		Drawing Size: C		Drawing Title: BASS PREAMP B		
Plot Time: 10:45:24		Drawing Type: Schematic		Drawing Number: 07s566-xx		
Tolerance:		Class Code: NONE		Sheet 2 of 2		

ON MAIN BD

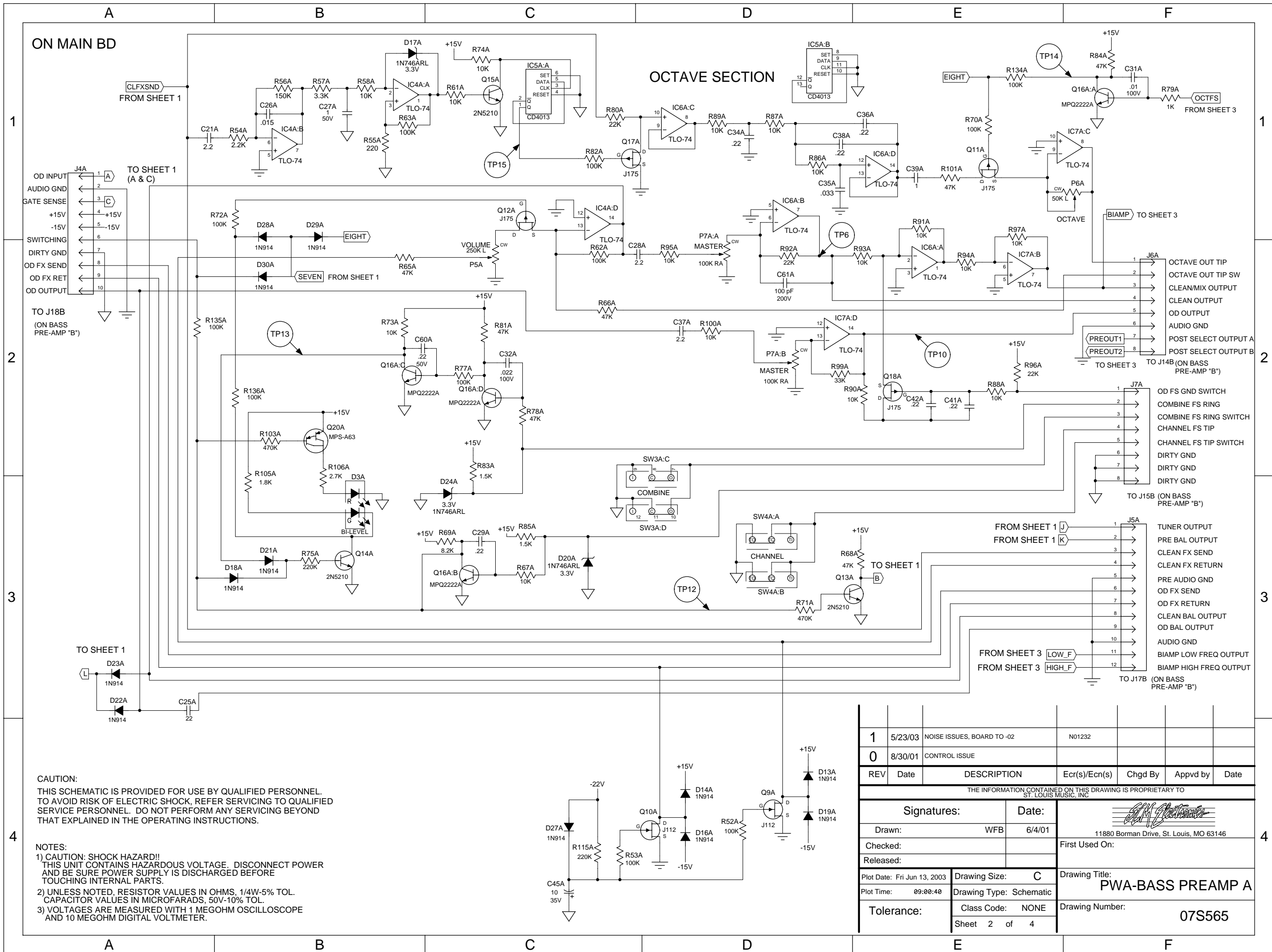
ON TUBE BREAK-OFF BD

CAUTION:  
THIS SCHEMATIC IS PROVIDED FOR USE BY QUALIFIED PERSONNEL.  
TO AVOID RISK OF ELECTRIC SHOCK, REFER SERVICING TO QUALIFIED  
SERVICE PERSONNEL. DO NOT PERFORM ANY SERVICING BEYOND  
THAT EXPLAINED IN THE OPERATING INSTRUCTIONS.

- NOTES:  
1) CAUTION: SHOCK HAZARD!!  
THIS UNIT CONTAINS HAZARDOUS VOLTAGE. DISCONNECT POWER  
AND BE SURE POWER SUPPLY IS DISCHARGED BEFORE  
TOUCHING INTERNAL PARTS.  
2) UNLESS NOTED, RESISTOR VALUES IN OHMS, 1/4W-5% TOL.  
CAPACITOR VALUES IN MICROFARADS, 50V-10% TOL.  
3) VOLTAGES ARE MEASURED WITH 1 MEGOHM OSCILLOSCOPE  
AND 10 MEGOHM DIGITAL VOLTMETER.



1	5/23/03	NOISE ISSUES, BOARD TO -02	N01232			
0	8/30/01	CONTROL ISSUE				
REV	Date	DESCRIPTION	Ecr(s)/Ecn(s)	Chgd By	Appvd by	Date
THE INFORMATION CONTAINED ON THIS DRAWING IS PROPRIETARY TO ST. LOUIS MUSIC, INC.						
Signatures:			Date:		 11880 Borman Drive, St. Louis, MO 63146	
Drawn: WFB			6/4/01			
Checked:			First Used On:		PWA-BASS PREAMP A Drawing Number: 07S565	
Released:			Drawing Title:			
Plot Date: Fri Jun 13, 2003		Drawing Size: C		Drawing Title: PWA-BASS PREAMP A		
Plot Time: 09:00:39		Drawing Type: Schematic		Drawing Number: 07S565		
Tolerance:		Class Code: NONE		Sheet 1 of 4		



**OCTAVE SECTION**

ON MAIN BD

1

2

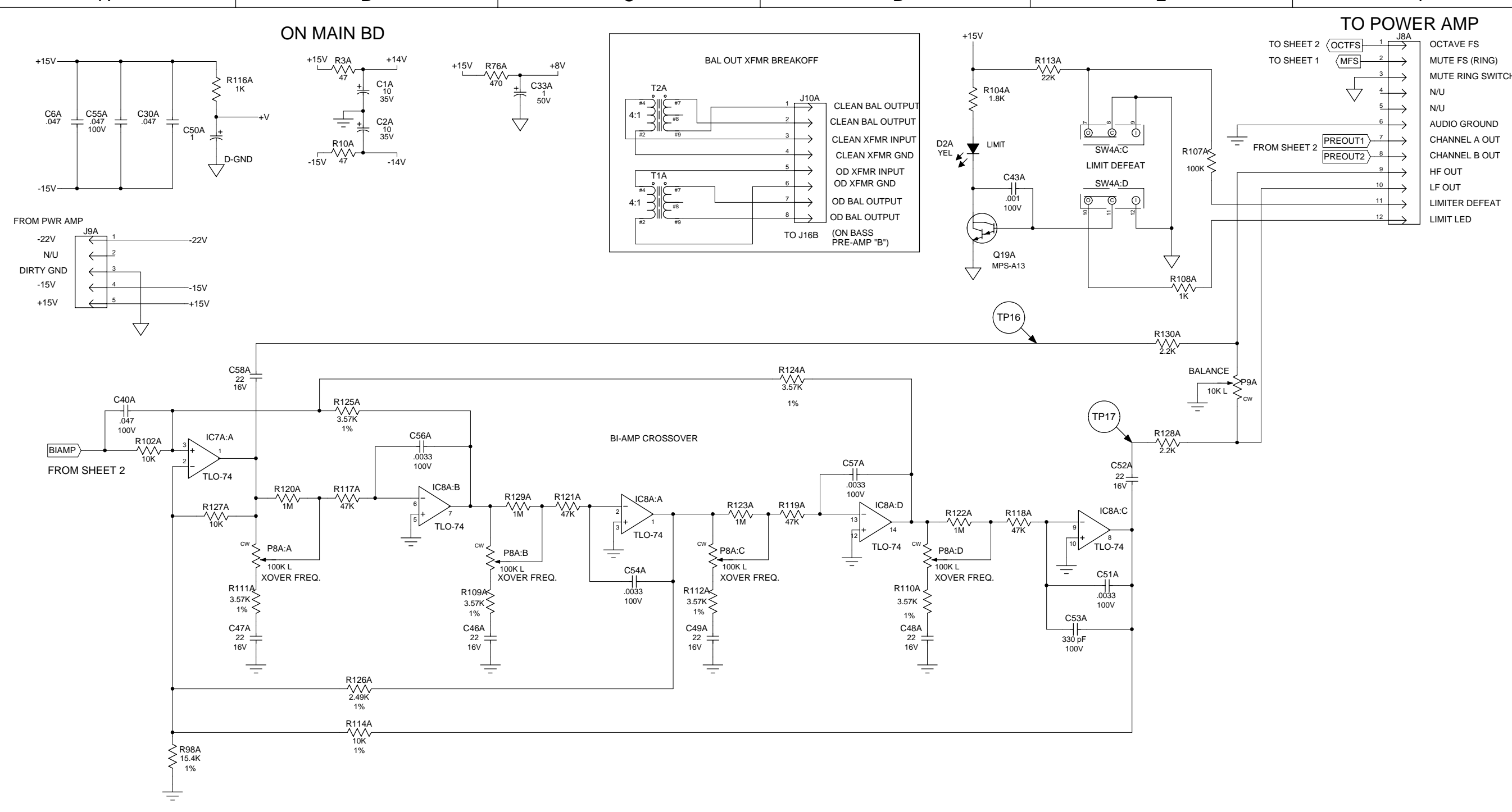
3

4

**CAUTION:**  
THIS SCHEMATIC IS PROVIDED FOR USE BY QUALIFIED PERSONNEL. TO AVOID RISK OF ELECTRIC SHOCK, REFER SERVICING TO QUALIFIED SERVICE PERSONNEL. DO NOT PERFORM ANY SERVICING BEYOND THAT EXPLAINED IN THE OPERATING INSTRUCTIONS.

**NOTES:**  
1) CAUTION: SHOCK HAZARD!! THIS UNIT CONTAINS HAZARDOUS VOLTAGE. DISCONNECT POWER AND BE SURE POWER SUPPLY IS DISCHARGED BEFORE TOUCHING INTERNAL PARTS.  
2) UNLESS NOTED, RESISTOR VALUES IN OHMS, 1/4W-5% TOL. CAPACITOR VALUES IN MICROFARADS, 50V-10% TOL.  
3) VOLTAGES ARE MEASURED WITH 1 MEGOHM OSCILLOSCOPE AND 10 MEGOHM DIGITAL VOLTMETER.

1	5/23/03	NOISE ISSUES, BOARD TO -02	N01232			
0	8/30/01	CONTROL ISSUE				
REV	Date	DESCRIPTION	Ecr(s)/Ecn(s)	Chgd By	Appvd by	Date
THE INFORMATION CONTAINED ON THIS DRAWING IS PROPRIETARY TO ST. LOUIS MUSIC, INC.						
<b>Signatures:</b>		<b>Date:</b>		 11880 Borman Drive, St. Louis, MO 63146 First Used On:		
Drawn: WFB		6/4/01				
Checked:						
Released:						
Plot Date: Fri Jun 13, 2003		Drawing Size: C		Drawing Title: PWA-BASS PREAMP A		
Plot Time: 09:00:40		Drawing Type: Schematic		Drawing Number: 07S565		
Tolerance:		Class Code: NONE		Sheet 2 of 4		



**CAUTION:**  
 THIS SCHEMATIC IS PROVIDED FOR USE BY QUALIFIED PERSONNEL. TO AVOID RISK OF ELECTRIC SHOCK, REFER SERVICING TO QUALIFIED SERVICE PERSONNEL. DO NOT PERFORM ANY SERVICING BEYOND THAT EXPLAINED IN THE OPERATING INSTRUCTIONS.

**NOTES:**  
 1) CAUTION: SHOCK HAZARD!! THIS UNIT CONTAINS HAZARDOUS VOLTAGE. DISCONNECT POWER AND BE SURE POWER SUPPLY IS DISCHARGED BEFORE TOUCHING INTERNAL PARTS.  
 2) UNLESS NOTED, RESISTOR VALUES IN OHMS, 1/4W-5% TOL. CAPACITOR VALUES IN MICROFARADS, 50V-10% TOL.  
 3) VOLTAGES ARE MEASURED WITH 1 MEGOHM OSCILLOSCOPE AND 10 MEGOHM DIGITAL VOLTMETER.


1	5/23/03	NOISE ISSUES, BOARD TO -02	N01232			
0	8/30/01	CONTROL ISSUE				
REV	Date	DESCRIPTION	Ecr(s)/Ecn(s)	Chgd By	Appvd by	Date
THE INFORMATION CONTAINED ON THIS DRAWING IS PROPRIETARY TO ST. LOUIS MUSIC, INC.						
Signatures:			Date:		 11880 Borman Drive, St. Louis, MO 63146 First Used On:	
Drawn: WFB			6/4/01			
Checked:						
Released:						
Plot Date: Fri Jun 13, 2003		Drawing Size: C		Drawing Title: PWA-BASS PREAMP A		
Plot Time: 09:00:40		Drawing Type: Schematic		Drawing Number: 07S565		
Tolerance:		Class Code: NONE		Sheet 3 of 4		

TEST POINT CONDITIONS

- 1 1KHZ 35mVrms INPUT SIGNAL
- 2 CLEAN GAIN, VOLUMES, MASTER @ "10"
- 3 OVERDRIVE GAIN, TONES @ "5"
- 4 BUTTONS "OUT"
- 5 \* TEST POINT ON 07566-XX SCHEMATIC

TEST POINTS


T.P.	AC VOLTAGE	DC VOLTAGE	WAVEFORM	CONDITIONS:
TP1	2.5V pp	0V		
TP1	0.4V pp	0V		PAD BUTTON "IN"
TP2	1.4V pp	0V		
TP3	--	1.5V		
TP3	--	1.8V		COMPRESSOR BUTTON "IN"
TP4	--	12V		
TP4	--	0V		MUTE BUTTON "IN"
TP5	1.3V pp	0V		
TP6	5.8V pp	0V		
* TP7	.14V pp	0V		
* TP7	.7V pp	0V	CLIPPED	BOOST BUTTON "IN"
* TP8	2.2V pp	0V	CLIPPED	
* TP9	.3V pp	0V	CLIPPED	
TP10	2.4V pp	0V	CLIPPED	CHAN. SELECT BUTTON "IN"
* TP11	--	14V		
* TP11	--	0V		GATE BUTTON "IN" W/ NO SIGNAL

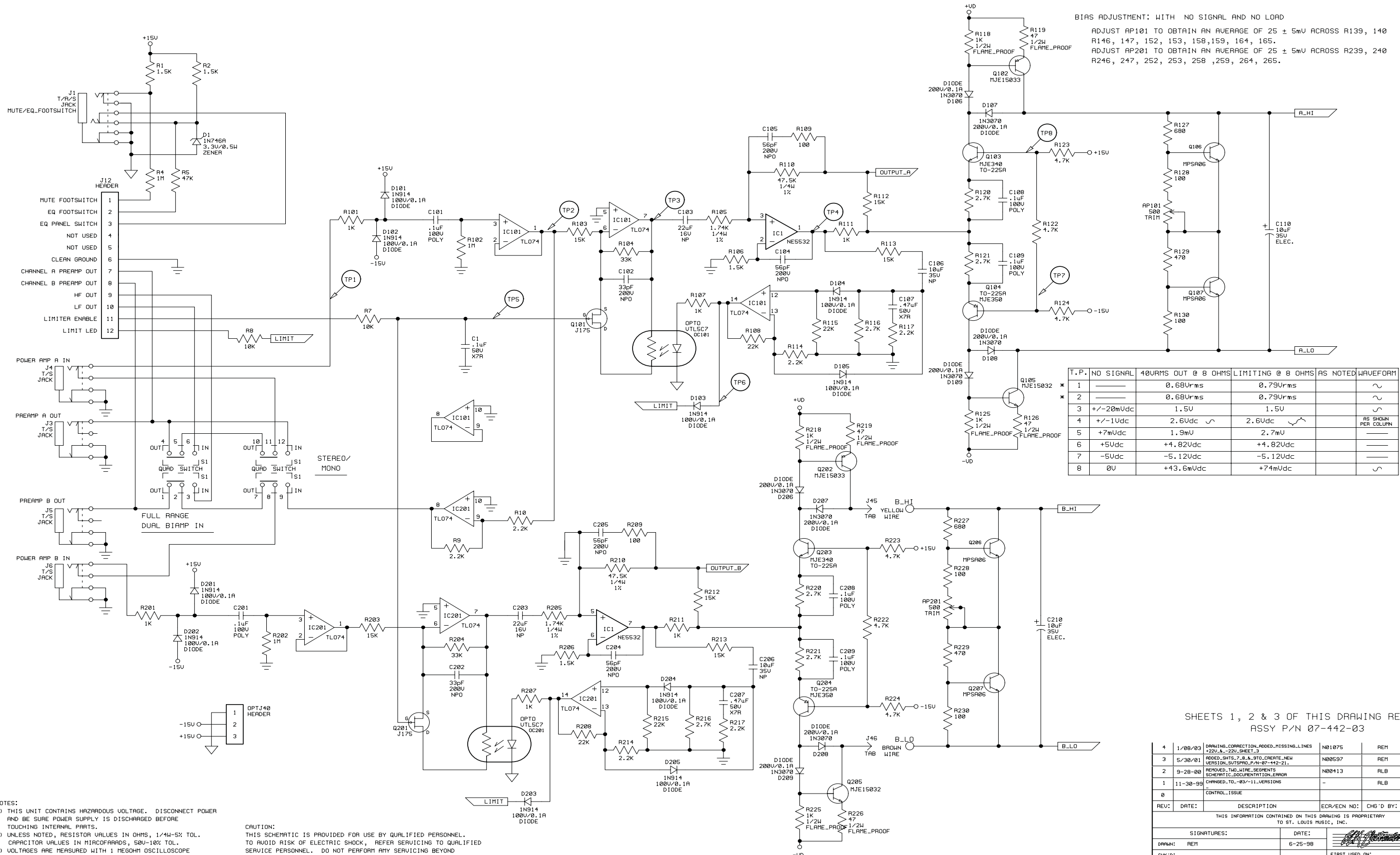
T.P.	AC VOLTAGE	DC VOLTAGE	WAVEFORM	CONDITIONS:
TP12	--	14V		
TP12	--	0V		CHAN. SELECT BUTTON "IN"
TP13	--	0V		
TP13	--	14V		COMBINE BUTTON "IN"
TP14	--	0V		
TP14	--	15V		OCTAVE FOOTSW. CLOSED
TP15	8V	4V		
TP16	0.4V pp	0V		FREQ. CCW; BAL CW
TP16	0V	0V		FREQ. CW; BAL CCW
TP17	0.4V pp	0V		FREQ. CW; BAL CCW
TP17	0V	0V		FREQ. CCW; BAL CW

RefDes	Value	-14V	+15V	-15V	+14V	+8V	D-GND
IC1A	TLO-72	4			8		
IC2A	TLO-72		8	4			
IC3A	NE5532		8	4			
IC4A	TLO-74		4	11			
IC5A	CD4013					14	7
IC6A	TLO-74		4	11			
IC7A	TLO-74		4	11			
IC8A	TLO-74		4	11			

CAUTION:  
THIS SCHEMATIC IS PROVIDED FOR USE BY QUALIFIED PERSONNEL.  
TO AVOID RISK OF ELECTRIC SHOCK, REFER SERVICING TO QUALIFIED  
SERVICE PERSONNEL. DO NOT PERFORM ANY SERVICING BEYOND  
THAT EXPLAINED IN THE OPERATING INSTRUCTIONS.

- NOTES:
- 1) CAUTION: SHOCK HAZARD!!  
THIS UNIT CONTAINS HAZARDOUS VOLTAGE. DISCONNECT POWER  
AND BE SURE POWER SUPPLY IS DISCHARGED BEFORE  
TOUCHING INTERNAL PARTS.
  - 2) UNLESS NOTED, RESISTOR VALUES IN OHMS, 1/4W-5% TOL.  
CAPACITOR VALUES IN MICROFARADS, 50V-10% TOL.
  - 3) VOLTAGES ARE MEASURED WITH 1 MEGOHM OSCILLOSCOPE  
AND 10 MEGOHM DIGITAL VOLTMETER.

1	5/23/03	NOISE ISSUES, BOARD TO -02	N01232			
0	8/30/01	CONTROL ISSUE				
REV	Date	DESCRIPTION	Ecr(s)/Ecn(s)	Chgd By	Appvd by	Date
THE INFORMATION CONTAINED ON THIS DRAWING IS PROPRIETARY TO ST. LOUIS MUSIC, INC.						
Signatures:			Date:		 11880 Borman Drive, St. Louis, MO 63146 First Used On:	
Drawn: WFB		6/4/01				
Checked:						
Released:						
Plot Date: Fri Jun 13, 2003		Drawing Size: C		Drawing Title: <b>PWA-BASS PREAMP A</b>		
Plot Time: 09:00:41		Drawing Type: Schematic		Drawing Number: <b>07S565</b>		
Tolerance:		Class Code: NONE		Sheet 4 of 4		



BIAS ADJUSTMENT: WITH NO SIGNAL AND NO LOAD  
 ADJUST AP101 TO OBTAIN AN AVERAGE OF 25 ± 5mV ACROSS R139, 140  
 R146, 147, 152, 153, 158, 159, 164, 165.  
 ADJUST AP201 TO OBTAIN AN AVERAGE OF 25 ± 5mV ACROSS R239, 240  
 R246, 247, 252, 253, 258, 259, 264, 265.

T.P.	NO SIGNAL	40URMS OUT @ 8 OHMS	LIMITING @ 8 OHMS	AS NOTED	WAVEFORM
1		0.68Urms	0.79Urms		~
2		0.68Urms	0.79Urms		~
3	+/-20mVdc	1.5V	1.5V		~
4	+/-1Vdc	2.6Vdc	2.6Vdc		AS SHOWN PER COLUMN
5	+7mVdc	1.9mV	2.7mV		
6	+5Vdc	+4.82Vdc	+4.82Vdc		
7	-5Vdc	-5.12Vdc	-5.12Vdc		
8	0V	+43.6mVdc	+74mVdc		~

- NOTES:
- THIS UNIT CONTAINS HAZARDOUS VOLTAGE. DISCONNECT POWER AND BE SURE POWER SUPPLY IS DISCHARGED BEFORE TOUCHING INTERNAL PARTS.
  - UNLESS NOTED, RESISTOR VALUES IN OHMS, 1/4W-5% TOL. CAPACITOR VALUES IN MICROFARADS, 50V-10% TOL.
  - VOLTAGES ARE MEASURED WITH 1 MEGOHM OSCILLOSCOPE AND 10 MEGOHM DIGITAL VOLTMETER.

CAUTION:  
 THIS SCHEMATIC IS PROVIDED FOR USE BY QUALIFIED PERSONNEL. TO AVOID RISK OF ELECTRIC SHOCK, REFER SERVICING TO QUALIFIED SERVICE PERSONNEL. DO NOT PERFORM ANY SERVICING BEYOND THAT EXPLAINED IN THE OPERATING INSTRUCTIONS.

SHEETS 1, 2 & 3 OF THIS DRAWING REPRESENT  
 ASSY P/N 07-442-03

REV:	DATE:	DESCRIPTION:	ECR/ECN NO:	CHG'D BY:	APP'D BY:	DATE:
4	1/08/03	DRAWING CORRECTION ADDED MISSING LINES +22U-L-22U-SHEET_3		N81075	REM	
3	5/30/01	ADDED SHTS 7, 8, & 9 TO CREATE NEW VERSION SUBPLOT P/N 07-442-03		N80597	REM	
2	9-28-00	REMOVED TWO WIRE SEGMENTS SCHEMATIC DOCUMENTATION ERROR		N80413	ALB	
1	11-30-99	CHANGED TO -03/-11 VERSIONS			ALB	
0		CONTROL ISSUE				

THIS INFORMATION CONTAINED ON THIS DRAWING IS PROPRIETARY TO ST. LOUIS MUSIC, INC.

SIGNATURES:		DATE:	11800 Borman Dr. St. Louis, Missouri 63146
DRAWN: REM		6-25-98	
CHK'D:		FIRST USED ON:	B-4R_BASS_AMP
ALS'D:		DRAWING TITLE:	POWER_AMP
TOLERANCES:	DRAWING SIZE: D	DRAWING NO.:	07S442-XX
	DRAWING TYPE: - SCHEMATIC		
	CLASS CODE:		
	SCALE: NONE	SHEET: SHT 1 OF 9	

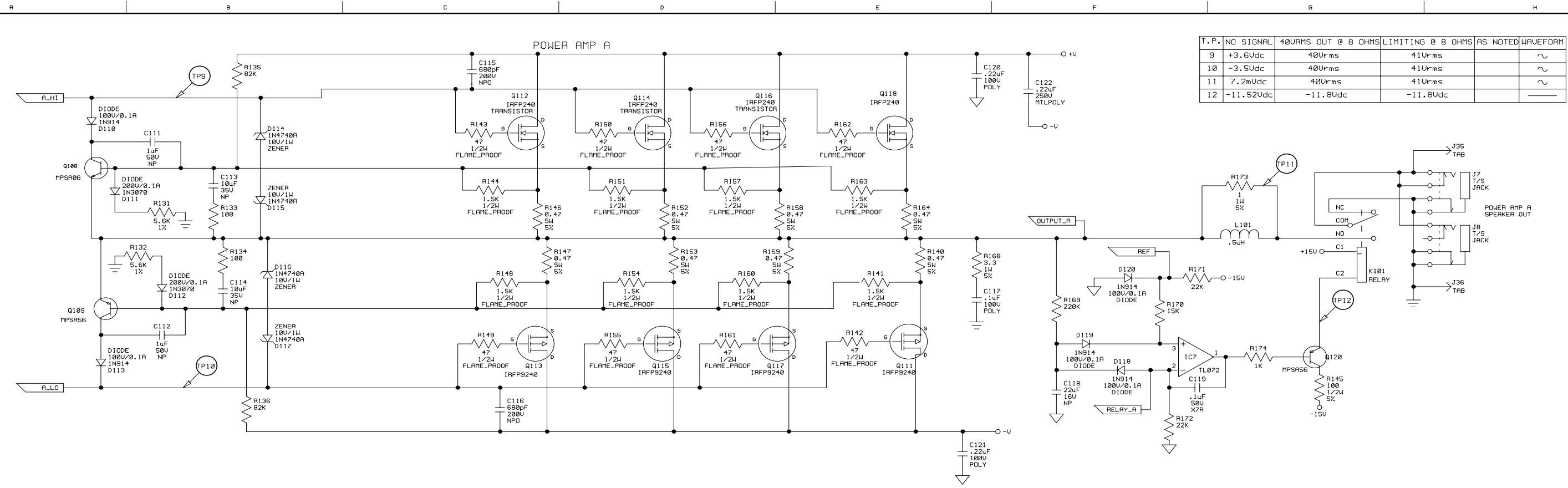


SVT-5PRO

©2007 LOUD Technologies Inc. All rights reserved

Power Amplifier PCB Schematics

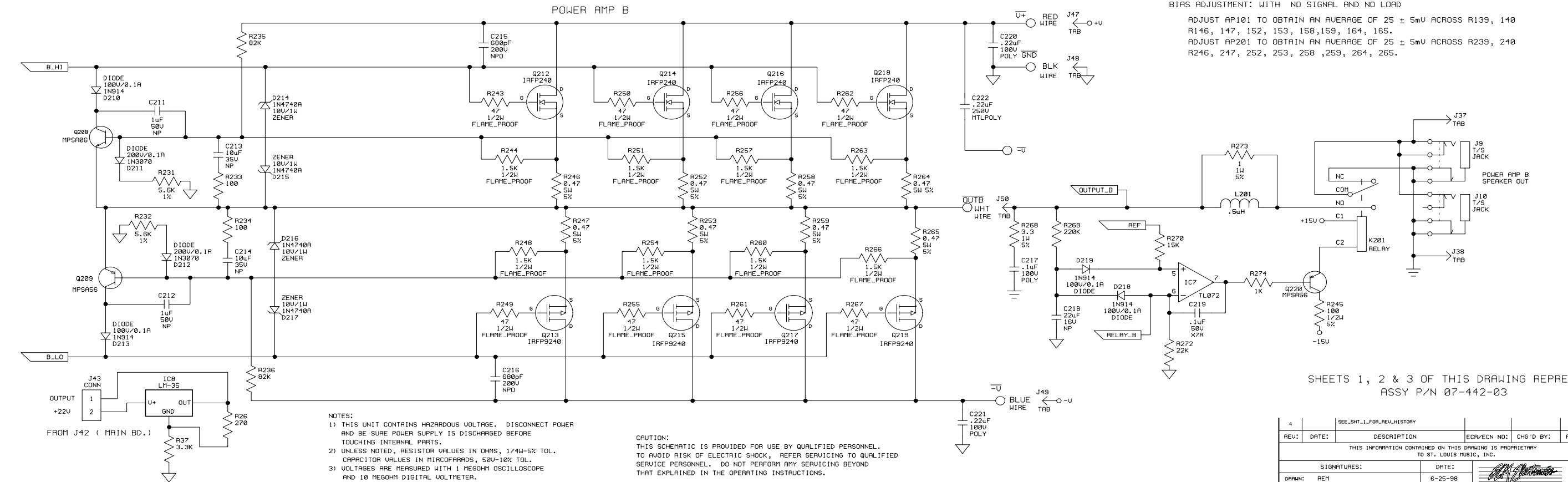
PAGE 1



T.P.	NO SIGNAL	40URMS OUT @ 8 OHMS	LIMITING @ 8 OHMS	AS NOTED	WAVEFORM
9	+3.6Udc	40Urms	41Urms		~
10	-3.5Udc	40Urms	41Urms		~
11	7.2mUdc	40Urms	41Urms		~
12	-11.52Udc	-11.8Udc	-11.8Udc		—

BIAS ADJUSTMENT: WITH NO SIGNAL AND NO LOAD

ADJUST AP101 TO OBTAIN AN AVERAGE OF 25 ± 5mV ACROSS R139, 140, 146, 147, 152, 153, 158, 159, 164, 165.  
 ADJUST AP201 TO OBTAIN AN AVERAGE OF 25 ± 5mV ACROSS R239, 240, 246, 247, 252, 253, 258, 259, 264, 265.



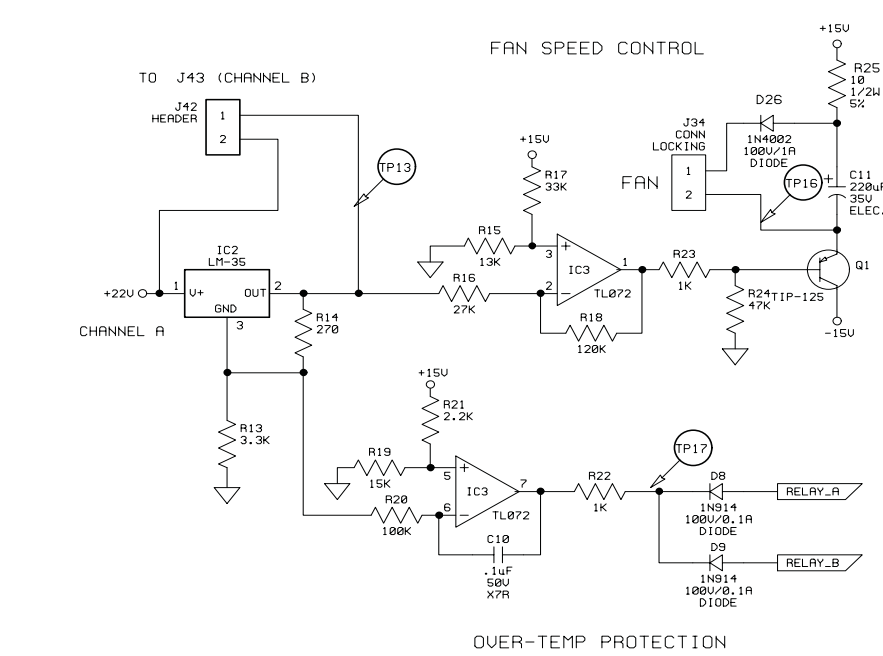
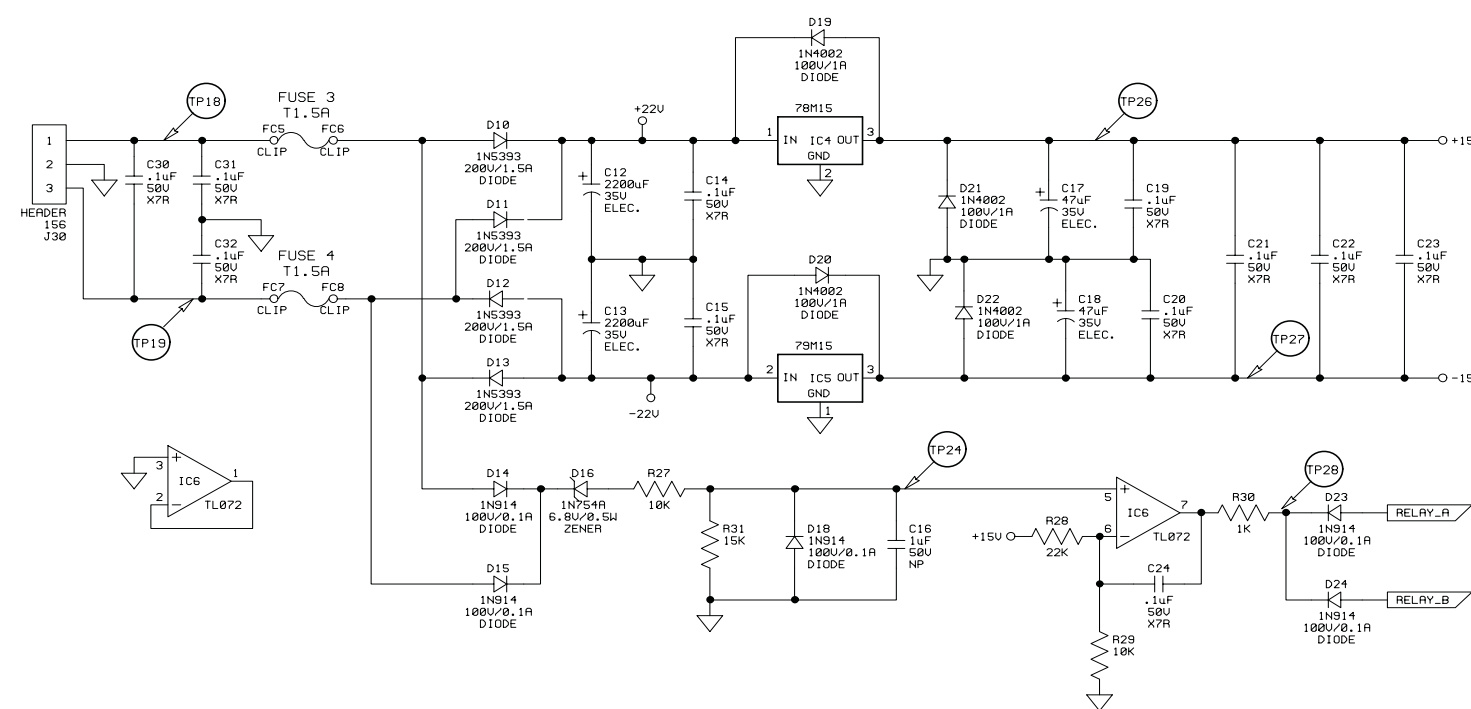
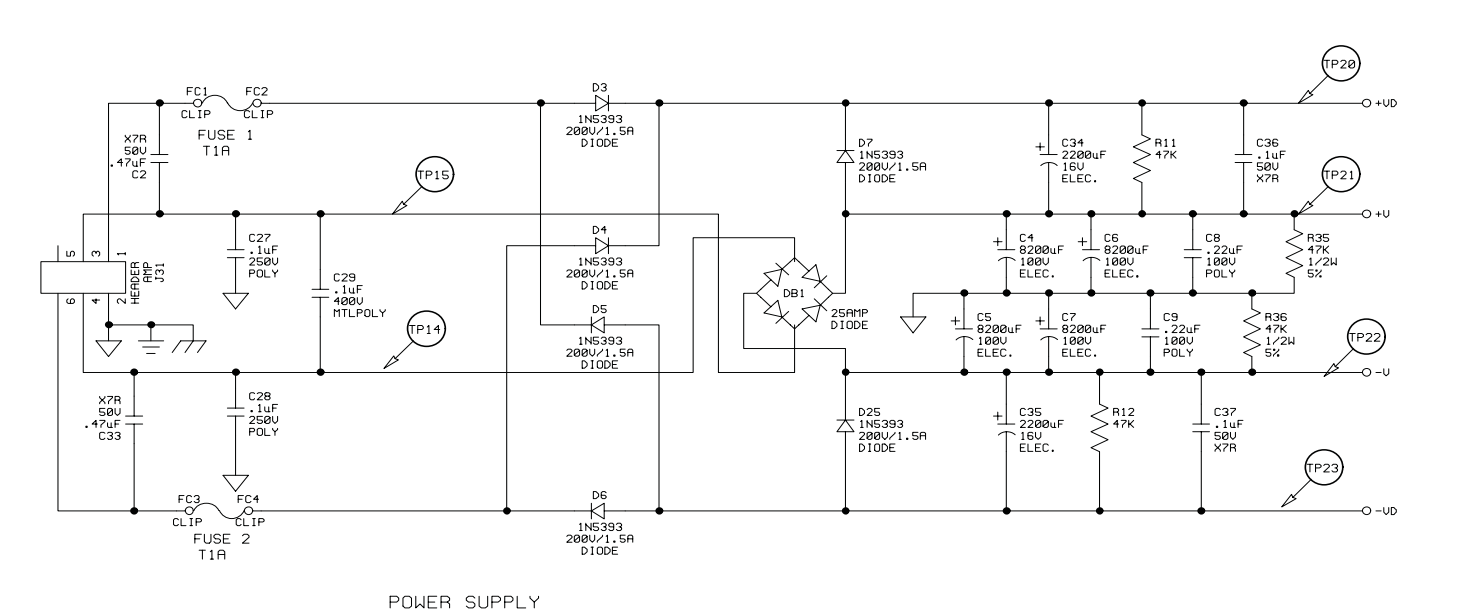
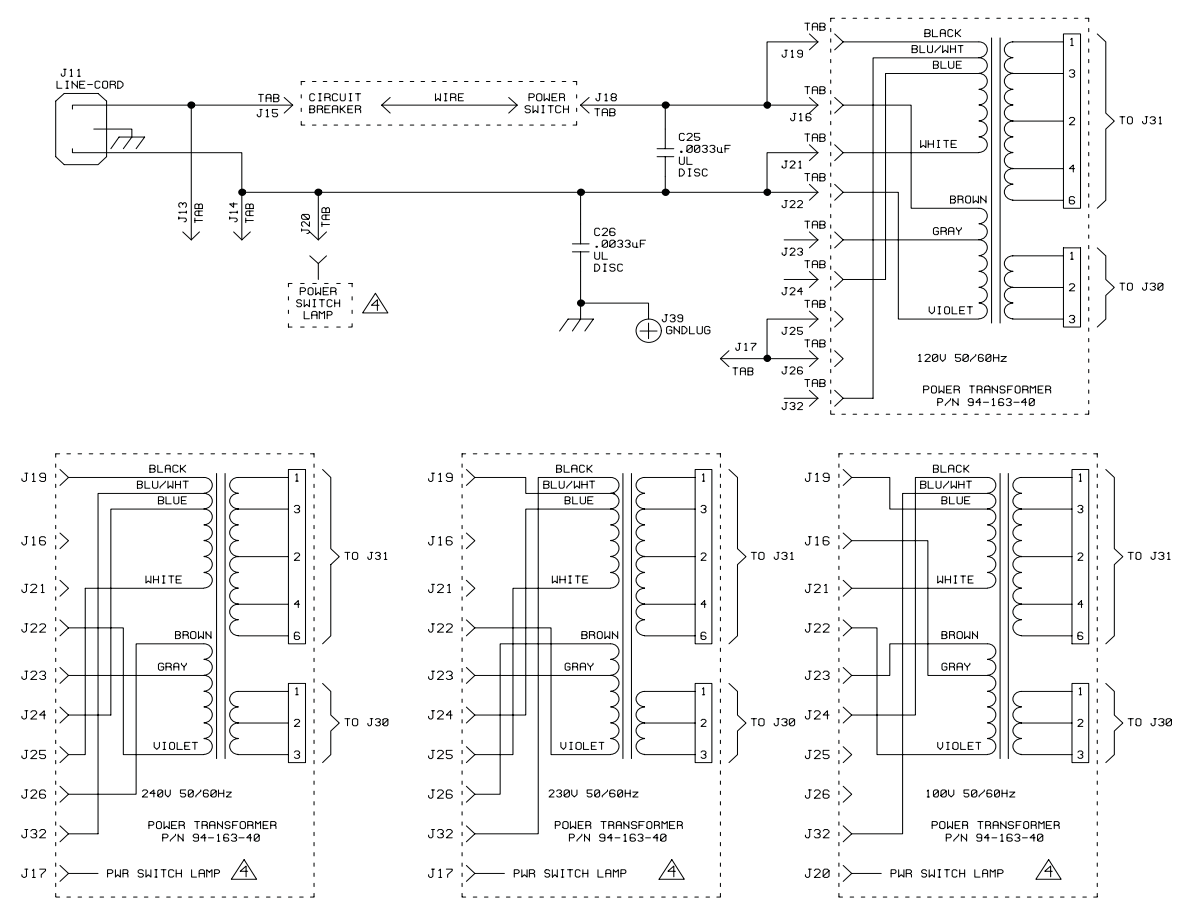
SHEETS 1, 2 & 3 OF THIS DRAWING REPRESENT ASSY P/N 07-442-03

- NOTES:
- 1) THIS UNIT CONTAINS HAZARDOUS VOLTAGE. DISCONNECT POWER AND BE SURE POWER SUPPLY IS DISCHARGED BEFORE TOUCHING INTERNAL PARTS.
  - 2) UNLESS NOTED, RESISTOR VALUES IN OHMS, 1/4W-5% TOL. CAPACITOR VALUES IN MICROFARADS, 50V-10% TOL.
  - 3) VOLTAGES ARE MEASURED WITH 1 MEGOHM OSCILLOSCOPE AND 10 MEGOHM DIGITAL VOLTMETER.

CAUTION:  
 THIS SCHEMATIC IS PROVIDED FOR USE BY QUALIFIED PERSONNEL. TO AVOID RISK OF ELECTRIC SHOCK, REFER SERVICING TO QUALIFIED SERVICE PERSONNEL. DO NOT PERFORM ANY SERVICING BEYOND THAT EXPLAINED IN THE OPERATING INSTRUCTIONS.

REV:	DATE:	DESCRIPTION:	ECR/ECN NO:	CHG'D BY:	APP'D BY:	DATE:
4		SEE_SHT_1_FOR_REV_HISTORY				
THIS INFORMATION CONTAINED ON THIS DRAWING IS PROPRIETARY TO ST. LOUIS MUSIC, INC.						
SIGNATURES:		DATE:	11888 Borman Dr. St. Louis, Missouri 63146			
DRAWN:	REM	6-25-98	FIRST USED ON: B-4R_BASS_AMP			
CHK'D:			DRAWING TITLE: POWER_AMP			
CLS'D:			DRAWING NO.:			
TOLERANCES:	DRAWING SIZE: D	DRAWING TITLE:		DRAWING NO.:		
	DRAWING TYPE: - SCHEMATIC	DRAWING TITLE:		DRAWING NO.:		
	CLASS CODE:	DRAWING TITLE:		DRAWING NO.:		
	SCALE: NONE	DRAWING TITLE:		DRAWING NO.:		
		DRAWING TITLE:		DRAWING NO.:		





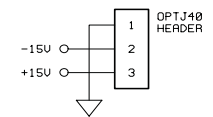
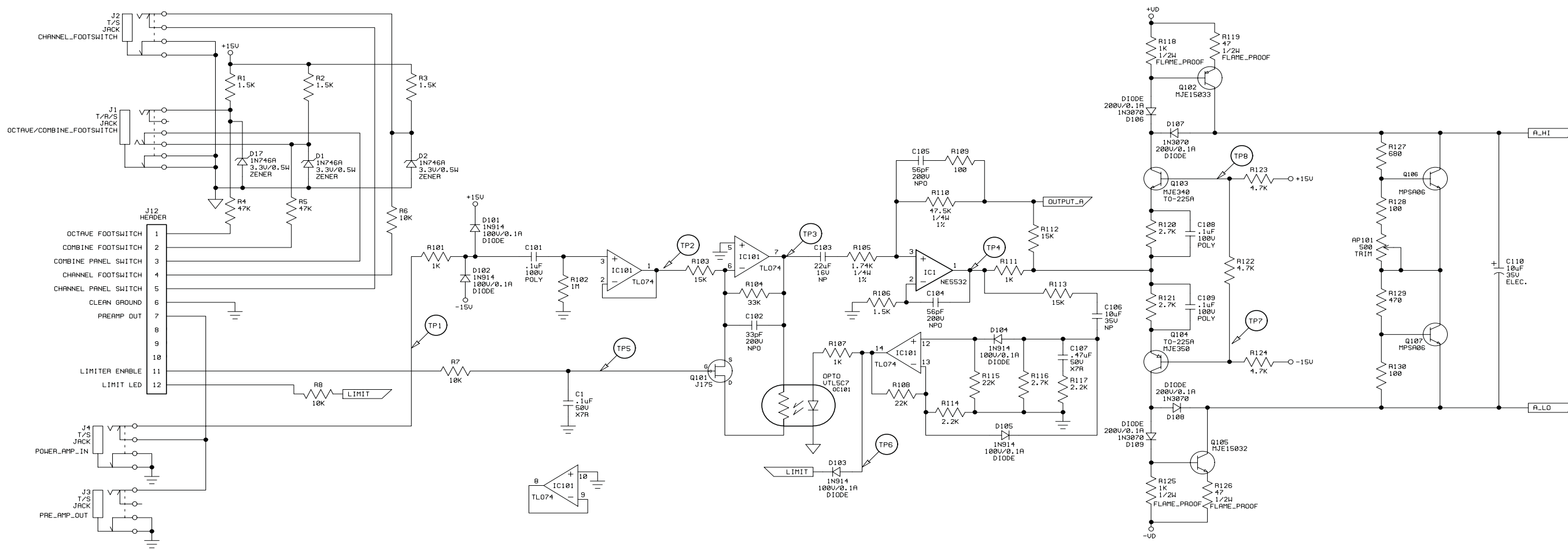
NOTES:  
 1) THIS UNIT CONTAINS HAZARDOUS VOLTAGE. DISCONNECT POWER AND BE SURE POWER SUPPLY IS DISCHARGED BEFORE TOUCHING INTERNAL PARTS.  
 2) UNLESS NOTED, RESISTOR VALUES IN OHMS, 1/4W-5% TOL. CAPACITOR VALUES IN MICROFARADS, 50V-10% TOL.  
 3) VOLTAGES ARE MEASURED WITH 1 MEGOHM OSCILLOSCOPE AND 10 MEGOHM DIGITAL VOLTMETER.  
 4) IF REQUIRED FOR CHASSIS ASSY.

CAUTION:  
 THIS SCHEMATIC IS PROVIDED FOR USE BY QUALIFIED PERSONNEL. TO AVOID RISK OF ELECTRIC SHOCK, REFER SERVICING TO QUALIFIED SERVICE PERSONNEL. DO NOT PERFORM ANY SERVICING BEYOND THAT EXPLAINED IN THE OPERATING INSTRUCTIONS.

TP	NO SIGNAL	40VRMS OUT @ 8 OHMS	LIMITING @ 8 OHMS	AS NOTED	WAVEFORM
13	VARIES w/TEMP	Varies w/TEMP.	Varies w/TEMP.		
14	61Vac	51Vac	51Vac		~
15	61Vac	51Vac	51Vac		~
16	+14Vdc	-4.6Vdc	-4.6Vdc		
17	+14.4Vdc	+14.4Vdc	+14.4Vdc		
18	20Vac	19Vac	19Vac		~
19	20Vac	19Vac	19Vac		~
20	+71Vdc	+64.5Vdc	+64.5Vdc		~
21	+63Vdc	+59Vdc	+59Vdc		~
22	-63Vdc	-59Vdc	-59Vdc		~
23	-71Vdc	-64.5Vdc	-64.5Vdc		~
24	+6Vdc	+5.73Vdc	+5.73Vdc		~
25	NOT USED				
26	+15Vdc	+15Vdc	+15Vdc		
27	-15Vdc	-15Vdc	-15Vdc		
28	+14.3Vdc	+14.3Vdc	+14.3Vdc		

SHEETS 1, 2 & 3 OF THIS DRAWING REPRESENT ASSY P/N 07-442-03

REV:	DATE:	DESCRIPTION:	ECR/ECN NO:	CHG'D BY:	APP'D BY:	DATE:
THIS INFORMATION CONTAINED ON THIS DRAWING IS PROPRIETARY TO ST. LOUIS MUSIC, INC.						
SIGNATURES:		DATE:		11800 Borman Dr., St. Louis, Missouri 63146		
DRAWN: REM			6-25-98			
CHK'D:			FIRST USED ON:	B-4R_BASS_AMP		
ALS'D:			DRAWING TITLE:	POWER_AMP		
TOLERANCES:	DRAWING SIZE: D		DRAWING NO.:		07S442-XX	
DRAWING TYPE: - SCHEMATIC		SCALE: NONE		SHEET: SHT 3 OF 9		



BIAS ADJUSTMENT: WITH NO SIGNAL AND NO LOAD  
 ADJUST AP101 TO OBTAIN AN AVERAGE OF 25 ± 5mV ACROSS R139, 140  
 R146, 147, 152, 153, 158, 159, 164, 165.

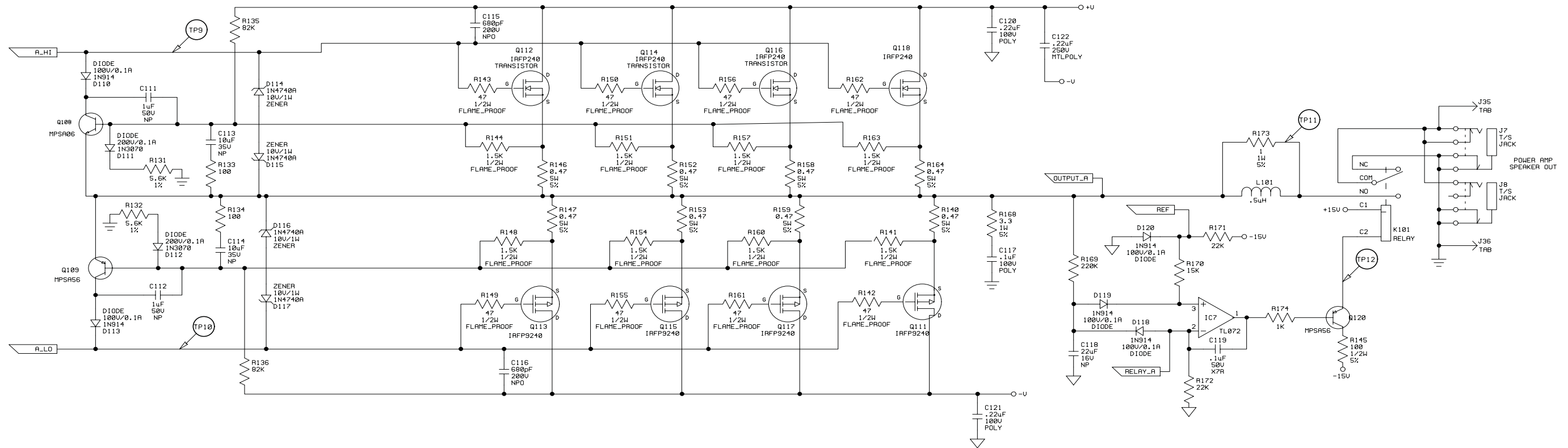
T.P.	NO SIGNAL	40URM5 OUT @ 8 OHMS	LIMITING @ 8 OHMS	AS NOTED	WAVEFORM
1	—	0.68Vrms	0.79Vrms	—	~
2	—	0.68Vrms	0.79Vrms	—	~
3	+/-20mVdc	1.5V	1.5V	—	~
4	+/-1Vdc	2.6Vdc	2.6Vdc	—	AS SHOWN PER COLUMN
5	+7mVdc	1.9mV	2.7mV	—	—
6	+5Vdc	+4.82Vdc	+4.82Vdc	—	—
7	-5Vdc	-5.12Vdc	-5.12Vdc	—	—
8	0V	+43.6mVdc	+74mVdc	—	~

SHEETS 4, 5 & 6 OF THIS DRAWING REPRESENTS  
 ASSY P/N 07-442-11

NOTES:  
 1) THIS UNIT CONTAINS HAZARDOUS VOLTAGE. DISCONNECT POWER AND BE SURE POWER SUPPLY IS DISCHARGED BEFORE TOUCHING INTERNAL PARTS.  
 2) UNLESS NOTED, RESISTOR VALUES IN OHMS, 1/4W-5% TOL. CAPACITOR VALUES IN MICROFARADS, 50V-10% TOL.  
 3) VOLTAGES ARE MEASURED WITH 1 MEGOHM OSCILLOSCOPE AND 10 MEGOHM DIGITAL VOLTMETER.

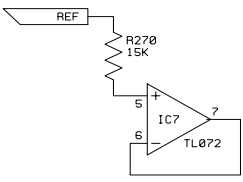
CAUTION:  
 THIS SCHEMATIC IS PROVIDED FOR USE BY QUALIFIED PERSONNEL. TO AVOID RISK OF ELECTRIC SHOCK, REFER SERVICING TO QUALIFIED SERVICE PERSONNEL. DO NOT PERFORM ANY SERVICING BEYOND THAT EXPLAINED IN THE OPERATING INSTRUCTIONS.

REV:	DATE:	DESCRIPTION	ECR/ECN NO:	CHG'D BY:	APP'D BY:	DATE:
THIS INFORMATION CONTAINED ON THIS DRAWING IS PROPRIETARY TO ST. LOUIS MUSIC, INC.						
SIGNATURES:		DATE:	11888 Borman Dr. St. Louis, Missouri 63146			
DRAWN:	REM	6-25-98	FIRST USED ON: B-4R_BASS_AMP			
CHK'D:			DRAWING TITLE: POWER_AMP			
CLS'D:			DRAWING NO.:			
TOLERANCES:	DRAWING SIZE: D	SCHEMATIC	DRAWING NO.:			
	DRAWING TYPE: -		DRAWING NO.:			
	CLASS CODE:		DRAWING NO.:			
	SCALE: NONE	SHEET: SHT 4 OF 9	DRAWING NO.:			



BIAS ADJUSTMENT: WITH NO SIGNAL AND NO LOAD  
 ADJUST AP101 TO OBTAIN AN AVERAGE OF  $25 \pm 5\mu\text{V}$  ACROSS R139, 140  
 R146, 147, 152, 153, 158, 159, 164, 165.

T.P.	NO SIGNAL	40VRMS OUT @ 8 OHMS	LIMITING @ 8 OHMS AS NOTED	WAVEFORM
9	+3.6Vdc	40Urms	41Urms	~
10	-3.5Vdc	40Urms	41Urms	~
11	7.2mVdc	40Urms	41Urms	~
12	-11.52Vdc	-11.8Vdc	-11.8Vdc	—



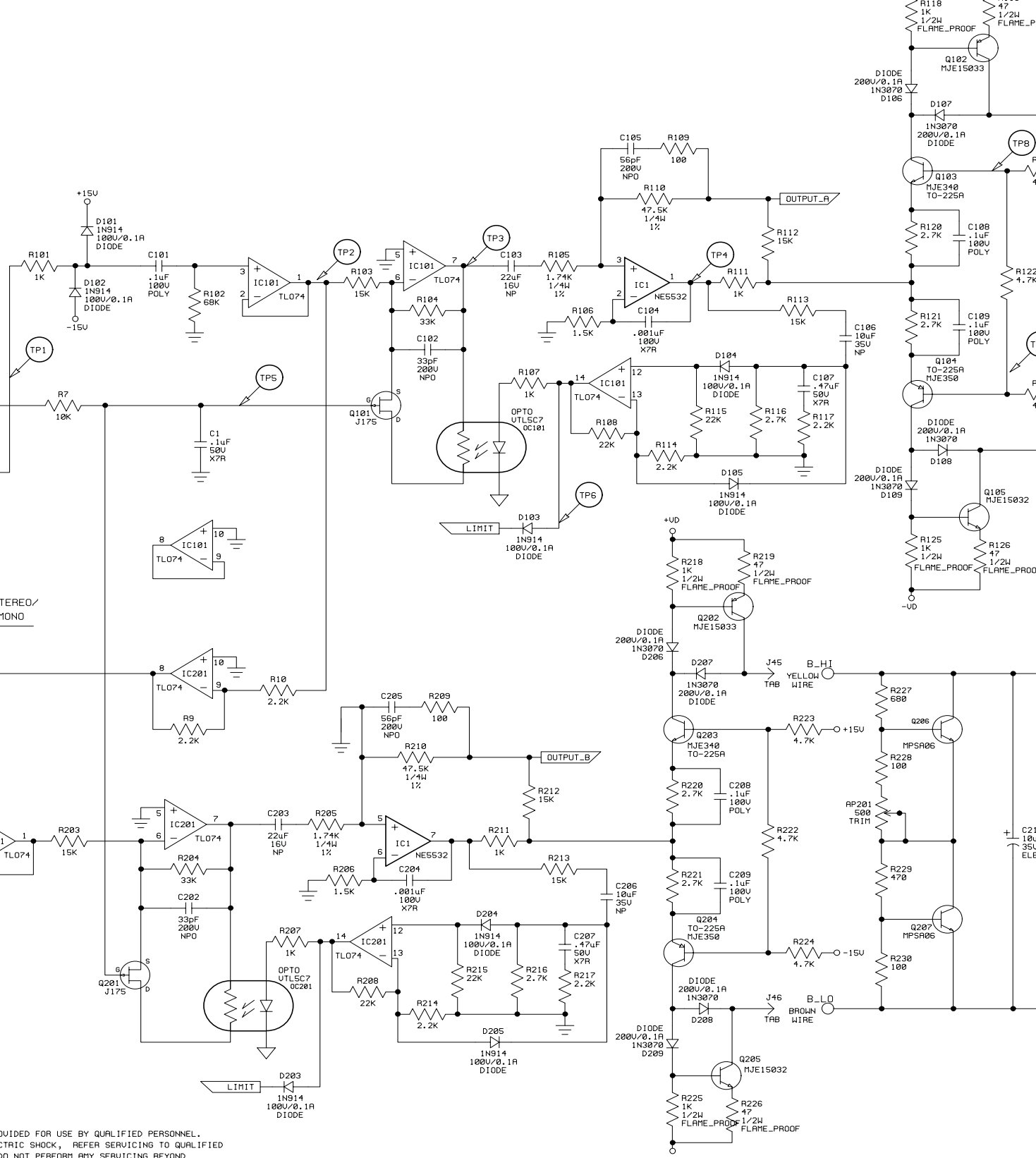
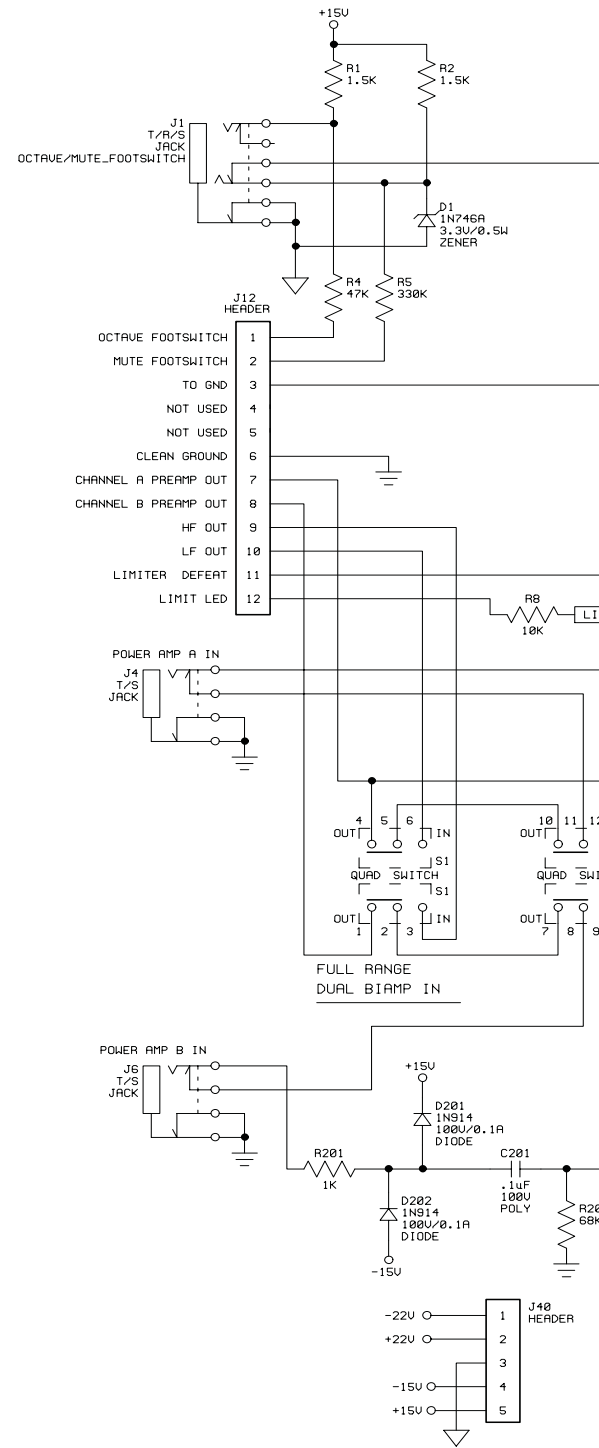
- NOTES:
- THIS UNIT CONTAINS HAZARDOUS VOLTAGE. DISCONNECT POWER AND BE SURE POWER SUPPLY IS DISCHARGED BEFORE TOUCHING INTERNAL PARTS.
  - UNLESS NOTED, RESISTOR VALUES IN OHMS, 1/4W-5% TOL. CAPACITOR VALUES IN MICROFARADS, 50V-10% TOL.
  - VOLTAGES ARE MEASURED WITH 1 MEGOHM OSCILLOSCOPE AND 10 MEGOHM DIGITAL VOLTMETER.

CAUTION:  
 THIS SCHEMATIC IS PROVIDED FOR USE BY QUALIFIED PERSONNEL.  
 TO AVOID RISK OF ELECTRIC SHOCK, REFER SERVICING TO QUALIFIED SERVICE PERSONNEL. DO NOT PERFORM ANY SERVICING BEYOND THAT EXPLAINED IN THE OPERATING INSTRUCTIONS.

SHEETS 4, 5 & 6 OF THIS DRAWING REPRESENTS  
 ASSY P/N 07-442-11

REV:	DATE:	DESCRIPTION	ECR/ECN NO:	CHG'D BY:	APP'D BY:	DATE:
THIS INFORMATION CONTAINED ON THIS DRAWING IS PROPRIETARY TO ST. LOUIS MUSIC, INC.						
SIGNATURES:		DATE:	11800 Borman Dr. St. Louis, Missouri 63146			
DRAWN:	REM	6-25-98	FIRST USED ON: B-4R_BASS_AMP			
CHK'D:			DRAWING TITLE: POWER_AMP			
ALS'D:			DRAWING NO.: 07S442-XX			
TOLERANCES:	DRAWING SIZE: D	DRAWING TYPE: - SCHEMATIC	SCALE: NONE			
	SHEET: SHT 5 OF 9					





BIAS ADJUSTMENT: WITH NO SIGNAL AND NO LOAD  
 ADJUST AP101 TO OBTAIN AN AVERAGE OF  $25 \pm 5\mu\text{V}$  ACROSS R139, 140  
 R146, 147, 152, 153, 158, 159, 164, 165.  
 ADJUST AP201 TO OBTAIN AN AVERAGE OF  $25 \pm 5\mu\text{V}$  ACROSS R239, 240  
 R246, 247, 252, 253, 258, 259, 264, 265.

T.P.	NO SIGNAL	40VRMS OUT @ 8 OHMS	LIMITING @ 8 OHMS	AS NOTED	WAVEFORM
1		0.68Urms	0.79Urms		~
2		0.68Urms	0.79Urms		~
3	+/-20mVdc	1.5U	1.5U		~
4	+/-1Vdc	2.6Vdc	2.6Vdc		AS SHOWN PER COLUMN
5	+7mVdc	1.9mU	2.7mU		
6	+5Udc	+4.82Udc	+4.82Udc		
7	-5Udc	-5.12Udc	-5.12Udc		
8	0U	+43.6mVdc	+74mVdc		~

- NOTES:
- THIS UNIT CONTAINS HAZARDOUS VOLTAGE. DISCONNECT POWER AND BE SURE POWER SUPPLY IS DISCHARGED BEFORE TOUCHING INTERNAL PARTS.
  - UNLESS NOTED, RESISTOR VALUES IN OHMS, 1/4W-5% TOL. CAPACITOR VALUES IN MICROFARADS, 50U-10% TOL.
  - VOLTAGES ARE MEASURED WITH 1 MEGOHM OSCILLOSCOPE AND 10 MEGOHM DIGITAL VOLTMETER.

CAUTION:  
 THIS SCHEMATIC IS PROVIDED FOR USE BY QUALIFIED PERSONNEL. TO AVOID RISK OF ELECTRIC SHOCK, REFER SERVICING TO QUALIFIED SERVICE PERSONNEL. DO NOT PERFORM ANY SERVICING BEYOND THAT EXPLAINED IN THE OPERATING INSTRUCTIONS.

SHEETS 7, 8 & 9 OF THIS DRAWING REPRESENT ASSY P/N 07-442-21

REV:	DATE:	DESCRIPTION:	ECR/ECN NO:	CHG'D BY:	APP'D BY:	DATE:
4		SEE_SHT_1_FOR_REV_HISTORY				
THIS INFORMATION CONTAINED ON THIS DRAWING IS PROPRIETARY TO ST. LOUIS MUSIC, INC.						
SIGNATURES:		DATE:		11888 Borman Dr., St. Louis, Missouri 63146		
DRAWN: REM		6-25-98		FIRST USED ON: B-4R_BASS_AMP		
CHK'D:				DRAWING TITLE: POWER_AMP		
RLS'D:				DRAWING NO.: 07S442-XX		
TOLERANCES:		DRAWING SIZE: D		DRAWING TITLE: POWER_AMP		
		DRAWING TYPE: - SCHEMATIC		DRAWING NO.: 07S442-XX		
		CLASS CODE:		DRAWING NO.: 07S442-XX		
		SCALE: NONE		SHEET: SHT 7 OF 9		

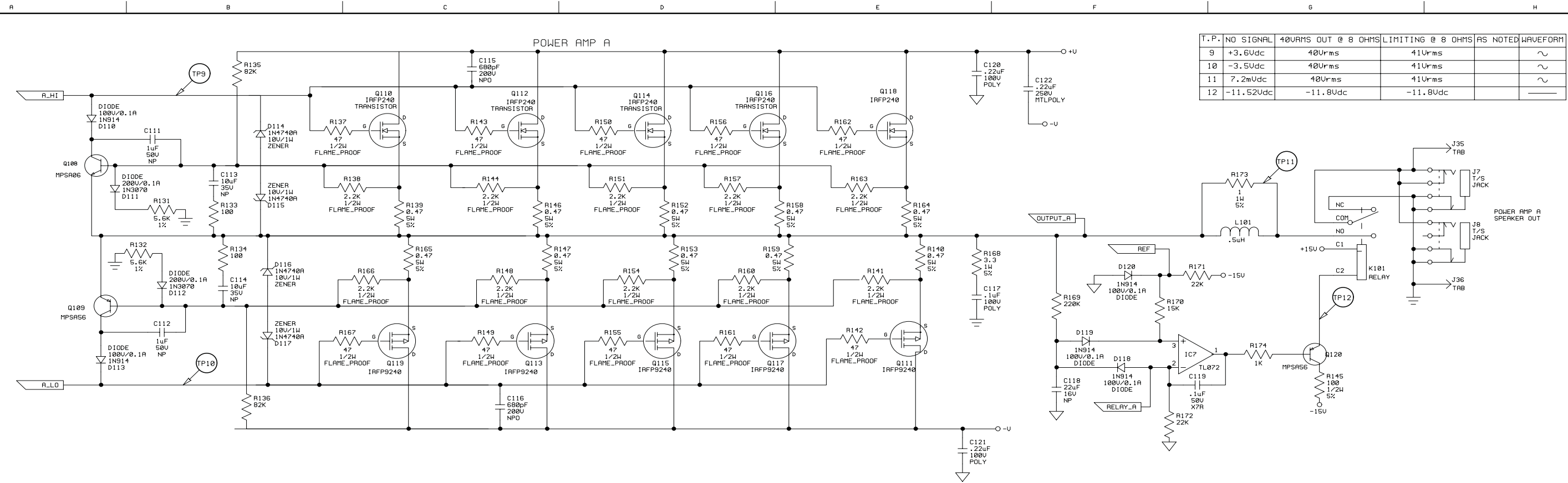


SVT-5PRO

©2007 LOUD Technologies Inc. All rights reserved

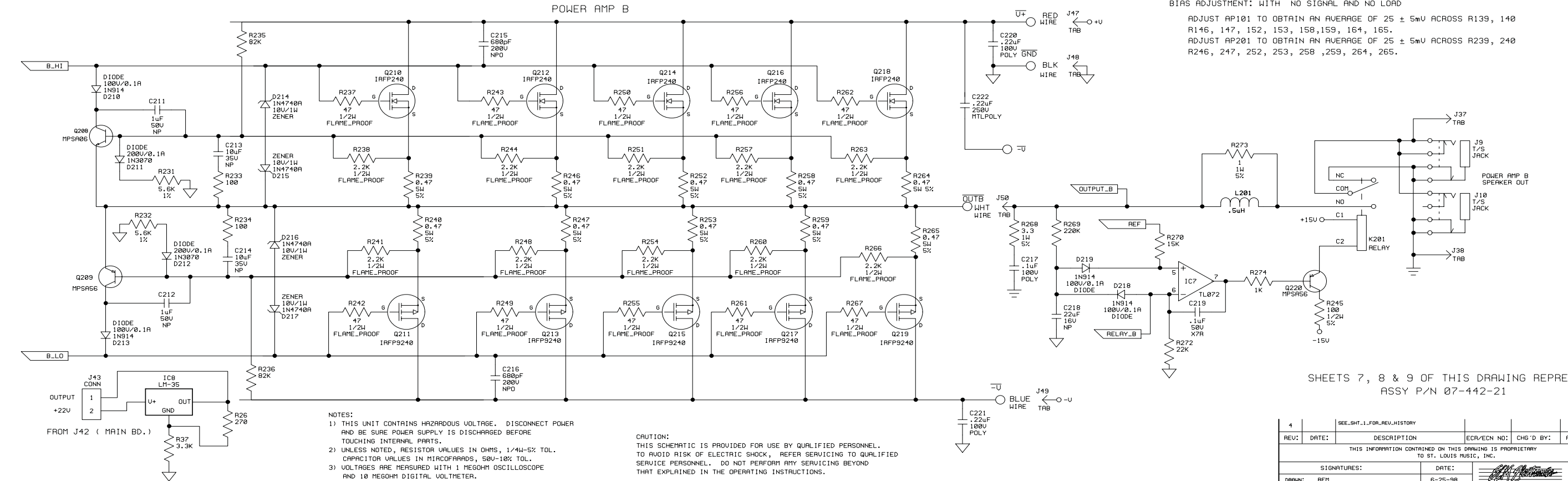
Power Amplifier PCB Schematics

PAGE 7



T.P.	NO SIGNAL	40VRMS OUT @ 8 OHMS	LIMITING @ 8 OHMS	AS NOTED	WAVEFORM
9	+3.6Udc	40Urms	41Urms		~
10	-3.5Udc	40Urms	41Urms		~
11	7.2mUdc	40Urms	41Urms		~
12	-11.52Udc	-11.8Udc	-11.8Udc		—

BIAS ADJUSTMENT: WITH NO SIGNAL AND NO LOAD  
 ADJUST AP101 TO OBTAIN AN AVERAGE OF 25 ± 5mV ACROSS R139, 140, 146, 147, 152, 153, 158, 159, 164, 165.  
 ADJUST AP201 TO OBTAIN AN AVERAGE OF 25 ± 5mV ACROSS R239, 240, 246, 247, 252, 253, 258, 259, 264, 265.



- NOTES:
- 1) THIS UNIT CONTAINS HAZARDOUS VOLTAGE. DISCONNECT POWER AND BE SURE POWER SUPPLY IS DISCHARGED BEFORE TOUCHING INTERNAL PARTS.
  - 2) UNLESS NOTED, RESISTOR VALUES IN OHMS, 1/4W-5% TOL. CAPACITOR VALUES IN MICROFARADS, 50V-10% TOL.
  - 3) VOLTAGES ARE MEASURED WITH 1 MEGOHM OSCILLOSCOPE AND 10 MEGOHM DIGITAL VOLTMETER.

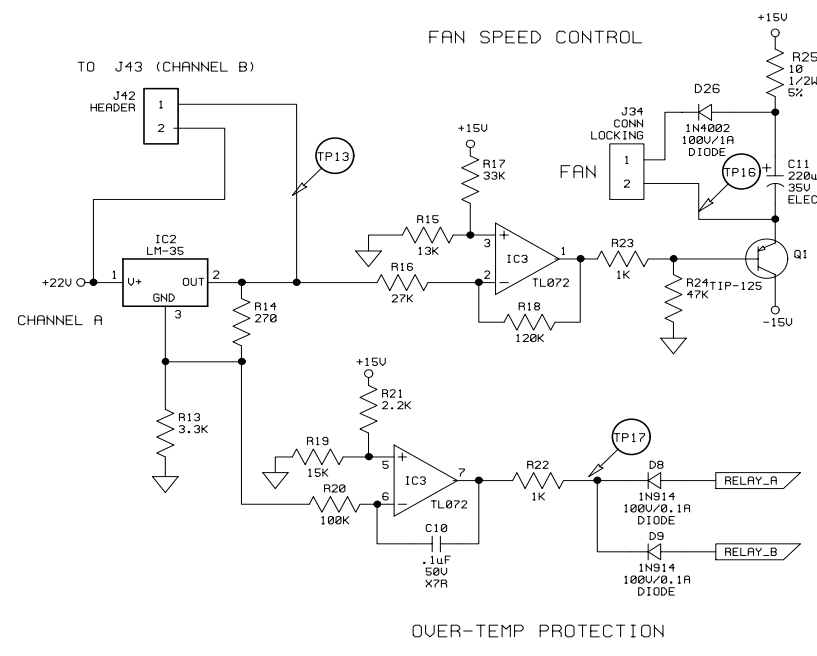
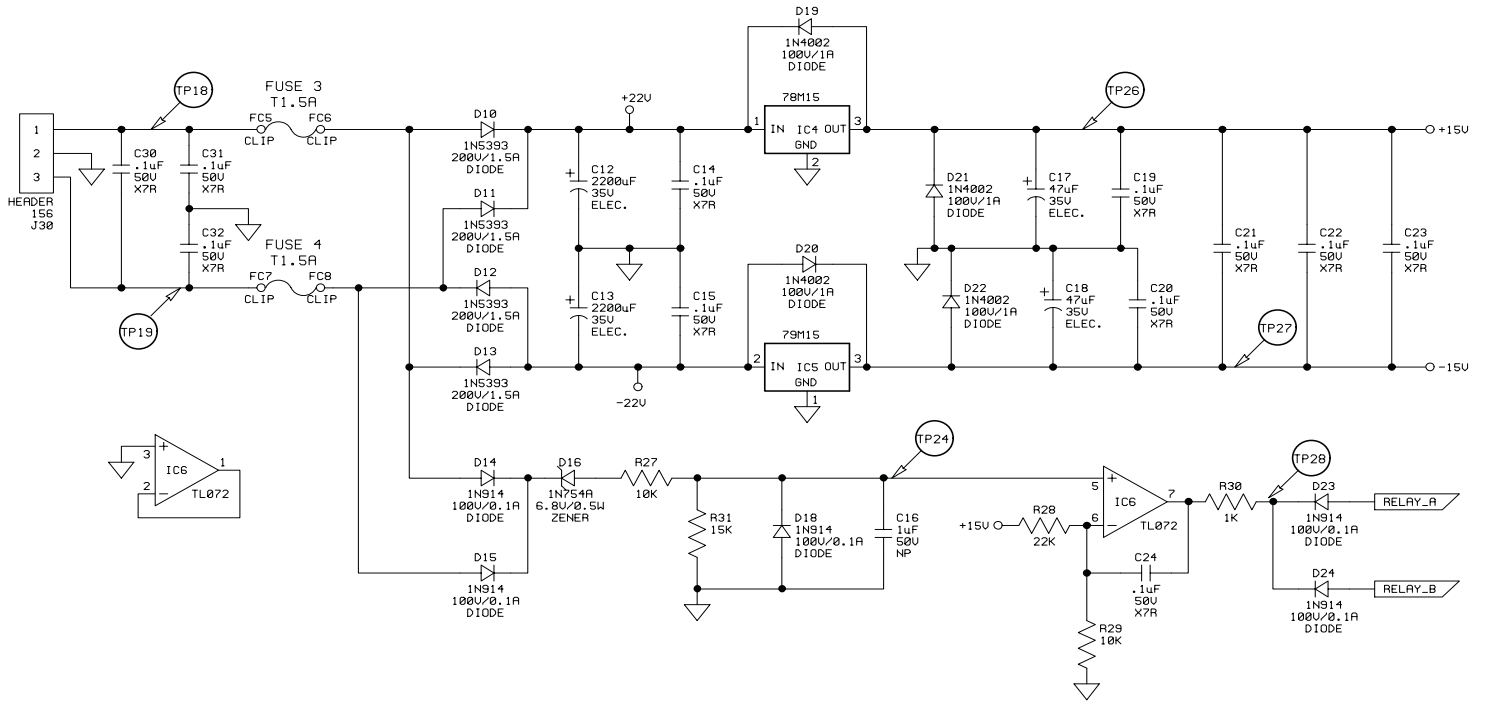
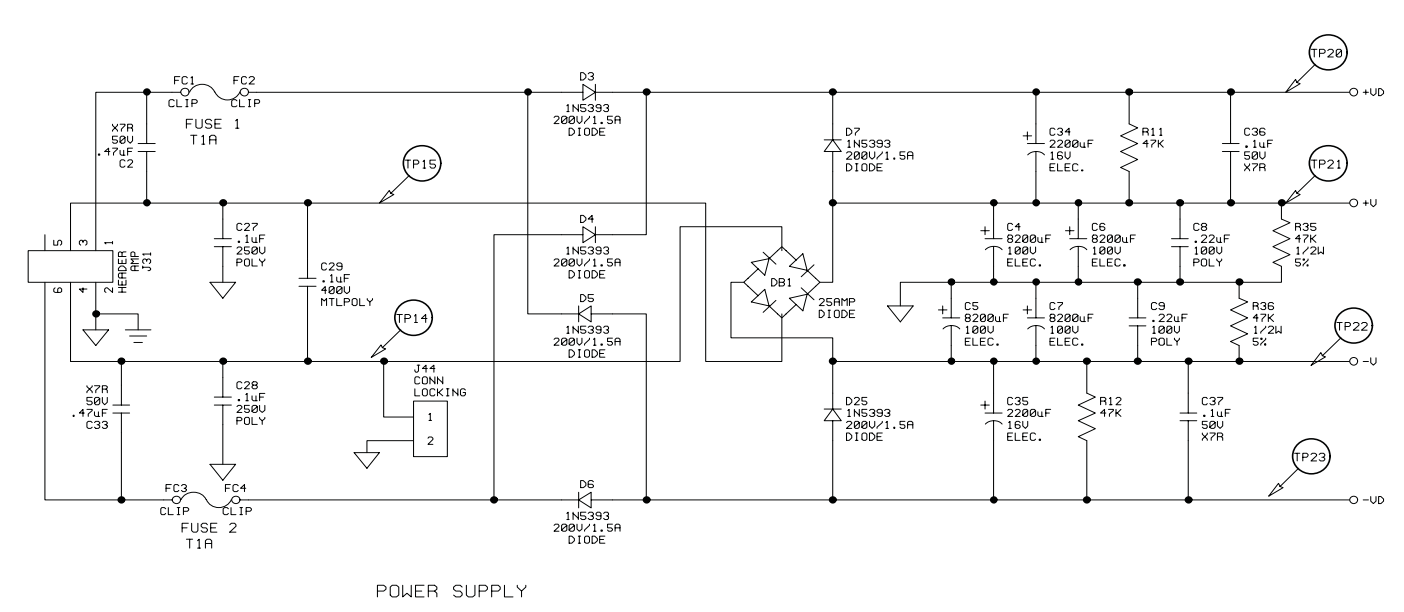
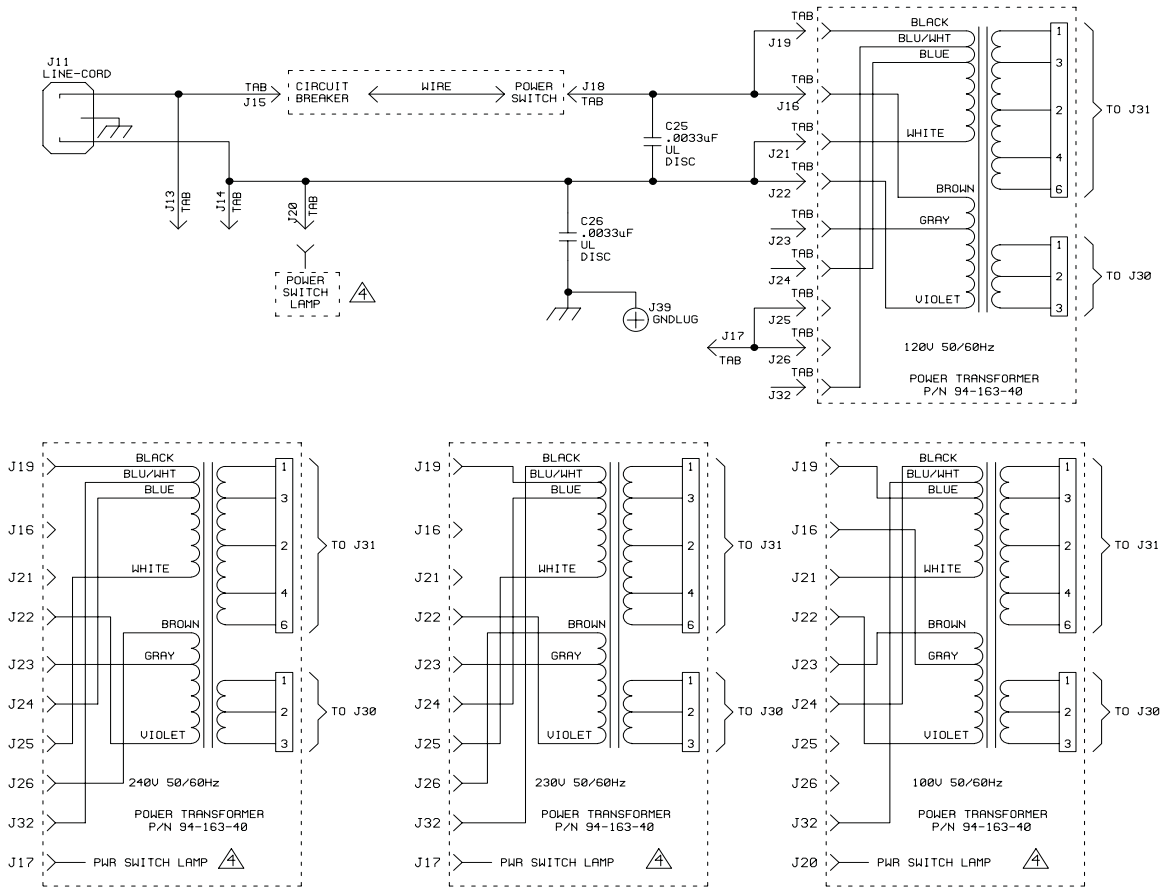
CAUTION:  
 THIS SCHEMATIC IS PROVIDED FOR USE BY QUALIFIED PERSONNEL. TO AVOID RISK OF ELECTRIC SHOCK, REFER SERVICING TO QUALIFIED SERVICE PERSONNEL. DO NOT PERFORM ANY SERVICING BEYOND THAT EXPLAINED IN THE OPERATING INSTRUCTIONS.

SHEETS 7, 8 & 9 OF THIS DRAWING REPRESENT ASSY P/N 07-442-21

REV:	DATE:	DESCRIPTION	ECR/ECN NO:	CHG'D BY:	APP'D BY:	DATE:
4		SEE_SHT_1_FOR_REV_HISTORY				

THIS INFORMATION CONTAINED ON THIS DRAWING IS PROPRIETARY TO ST. LOUIS MUSIC, INC.

SIGNATURES:	DATE:	11888 Borman Dr., St. Louis, Missouri 63146
DRAWN: REM	6-25-98	
CHK'D:		FIRST USED ON: B-4R_BASS_AMP
RLS'D:		DRAWING TITLE: POWER_AMP
TOLERANCES:	DRAWING SIZE: D	DRAWING NO.:
	DRAWING TYPE: - SCHEMATIC	
	CLASS CODE:	
	SCALE: NONE	SHEET: SHT 8 OF 9



- NOTES:
- 1) THIS UNIT CONTAINS HAZARDOUS VOLTAGE. DISCONNECT POWER AND BE SURE POWER SUPPLY IS DISCHARGED BEFORE TOUCHING INTERNAL PARTS.
  - 2) UNLESS NOTED, RESISTOR VALUES IN OHMS, 1/4W-5% TOL. CAPACITOR VALUES IN MICROFARADS, 50V-10% TOL.
  - 3) VOLTAGES ARE MEASURED WITH 1 MEGOHM OSCILLOSCOPE AND 10 MEGOHM DIGITAL VOLTMETER.
  - 4) IF REQUIRED FOR CHASSIS ASSY.

CAUTION:  
THIS SCHEMATIC IS PROVIDED FOR USE BY QUALIFIED PERSONNEL. TO AVOID RISK OF ELECTRIC SHOCK, REFER SERVICING TO QUALIFIED SERVICE PERSONNEL. DO NOT PERFORM ANY SERVICING BEYOND THAT EXPLAINED IN THE OPERATING INSTRUCTIONS.

TP	NO SIGNAL	40VRMS OUT @ 8 OHMS	LIMITING @ 8 OHMS AS NOTED	WAVEFORM
13	VARIES w/TEMP	Varies w/temp.	Varies w/temp.	—
14	61Vac	51Vac	51Vac	~
15	61Vac	51Vac	51Vac	~
16	+14Vdc	-4.6Vdc	-4.6Vdc	—
17	+14.4Vdc	+14.4Vdc	+14.4Vdc	—
18	20Vac	19Vac	19Vac	~
19	20Vac	19Vac	19Vac	~
20	+71Vdc	+64.5Vdc	+64.5Vdc	^^
21	+63Vdc	+59Vdc	+59Vdc	^^
22	-63Vdc	-59Vdc	-59Vdc	^^
23	-71Vdc	-64.5Vdc	-64.5Vdc	^^
24	+6Vdc	+5.73Vdc	+5.73Vdc	—
25	NOT USED	—	—	—
26	+15Vdc	+15Vdc	+15Vdc	—
27	-15Vdc	-15Vdc	-15Vdc	—
28	+14.3Vdc	+14.3Vdc	+14.3Vdc	—

SHEETS 7, 8 & 9 OF THIS DRAWING REPRESENT ASSY P/N 07-442-21

REV:	DATE:	DESCRIPTION:	ECR/ECN NO:	CHG'D BY:	APP'D BY:	DATE:
THIS INFORMATION CONTAINED ON THIS DRAWING IS PROPRIETARY TO ST. LOUIS MUSIC, INC.						
SIGNATURES:		DATE:		11888 Borman Dr. St. Louis, Missouri 63116		
DRAWN: REM			6-25-98			
CHK'D:			FIRST USED ON:		B-4R_BASS_AMP	
RLS'D:			DRAWING TITLE:		POWER_AMP	
TOLERANCES:	DRAWING SIZE: D		DRAWING NO.:		07S442-XX	
	DRAWING TYPE: - SCHEMATIC		SCALE: NONE		SHEET: SHT 9 OF 9	