
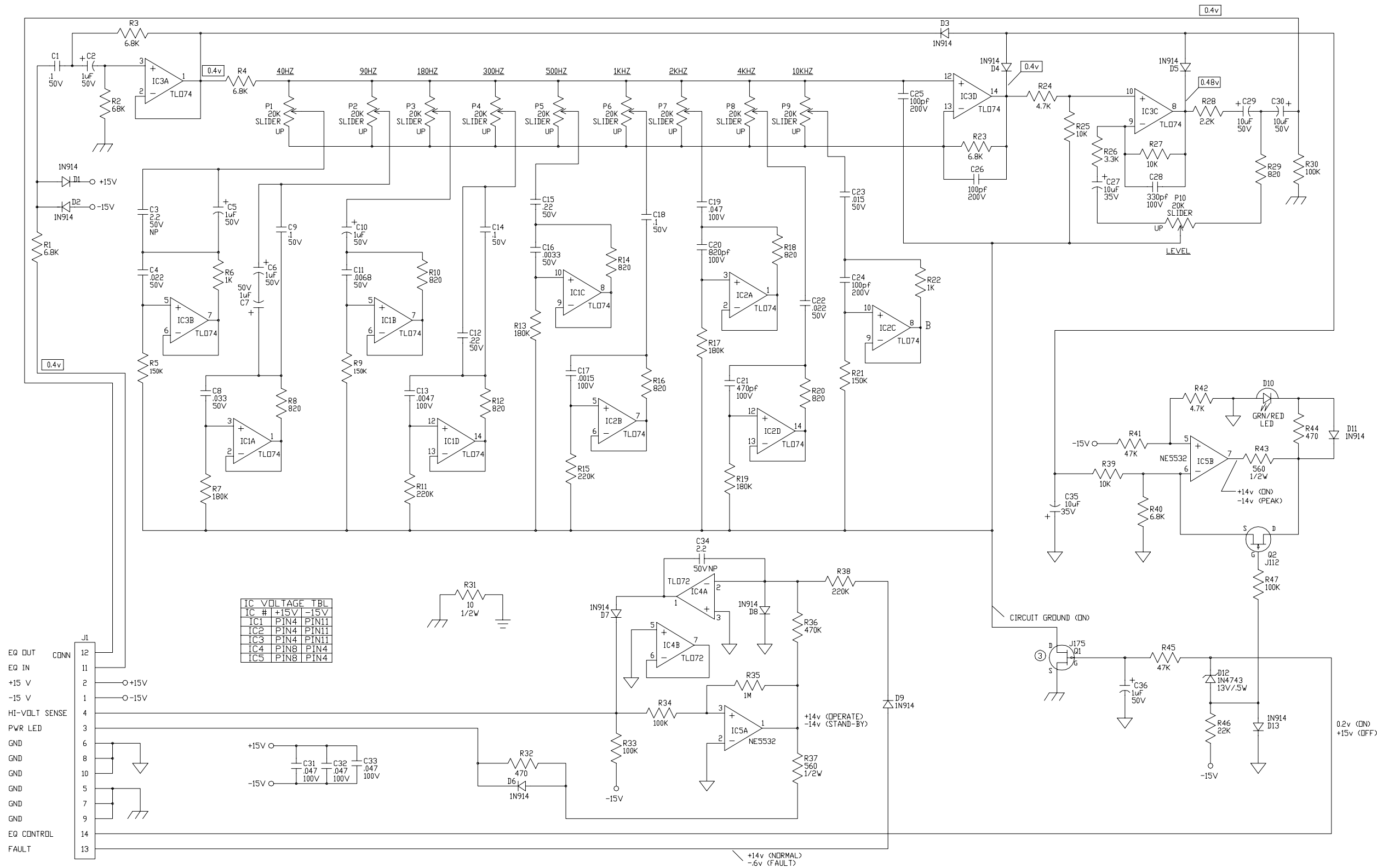


- NOTES**
- 1) CAUTION: SHOCK HAZARD!! THIS UNIT CONTAINS HAZARDOUS VOLTAGE. DISCONNECT POWER AND BE SURE POWER SUPPLY IS DISCHARGED BEFORE TOUCHING INTERNAL PARTS.
 - 2) UNLESS NOTED, RESISTOR VALUES IN OHMS, 1/4W-5% TOL. CAPACITOR VALUES IN MICROFARADS, 50V-10% TOL.
 - 3) VOLTAGES ARE MEASURED WITH 1 MEGOHM OSCILLOSCOPE AND 10 MEGOHM DIGITAL VOLTMETER.
 - 4) VOLTAGES IN RECTANGLES ARE RMS SIGNAL VOLTAGES. OTHER VOLTAGES ARE D.C. IN CONDITIONS STATED.
 - 5) CIRCUIT GROUND \uparrow DIRTY GROUND \downarrow CHASSIS GROUND \perp


REV	DATE	BY	CHK'D	DESCRIPTION
3	06/18/94	LMA		REV CHG TO REFLECT JUMPER CHG PER E150
2				
1				

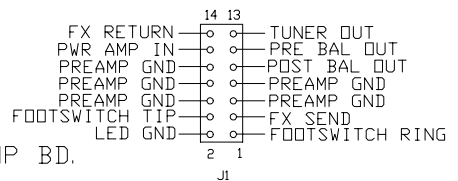
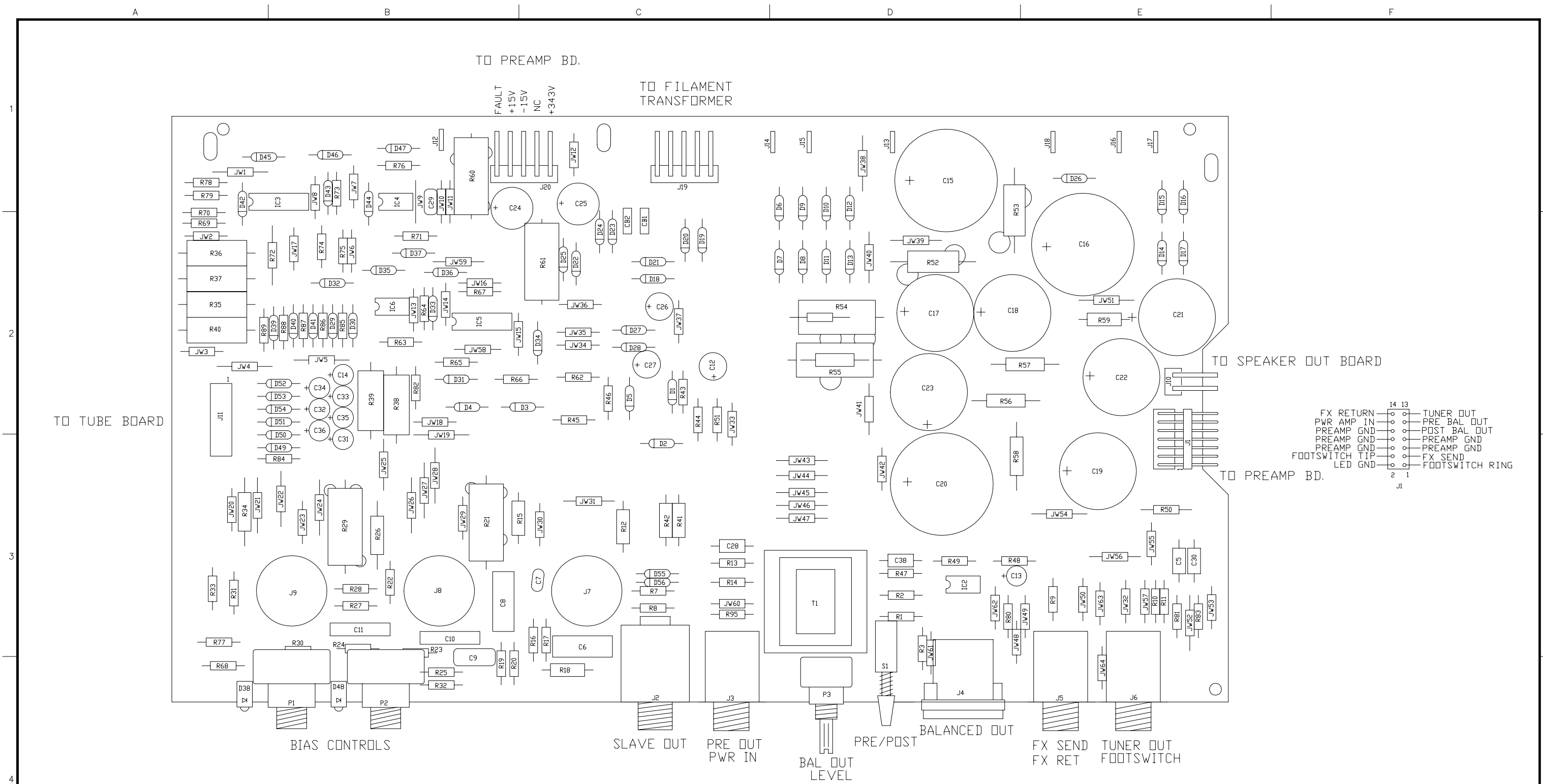
SIGNATURES:	DATE:	 11860 BORMAN DR. ST. LOUIS, MISSOURI 63148
DRAWN: ERW CHK'D: APP'D:	3/30/93	
ORIGINAL ISSUED:		PROJECT NAME: SVT-2 PRO
PLOT DATE: 05/18/94 PLOT TIME: 09:42:37		DRAWING NAME: PRE AMP SCHEMATIC
FILE NAME: 51903H3Z		DRAWING NO. 07S519-03 SCALE: 1:1 SHEET: 1 OF 1



IC VOLTAGE TBL			
IC #	+15V	-15V	
IC1	PIN4	PIN11	
IC2	PIN4	PIN11	
IC3	PIN4	PIN11	
IC4	PIN8	PIN4	
IC5	PIN8	PIN4	

- NOTES**
- 1) CAUTION: SHOCK HAZARD!! THIS UNIT CONTAINS HAZARDOUS VOLTAGE. DISCONNECT POWER AND BE SURE POWER SUPPLY IS DISCHARGED BEFORE TOUCHING INTERNAL PARTS.
 - 2) UNLESS NOTED, RESISTOR VALUES IN OHMS, 1/4W-5% TOL. CAPACITOR VALUES IN MICROFARADS, 50V-10% TOL.
 - 3) VOLTAGES ARE MEASURED WITH 1 MEGOHM OSCILLOSCOPE AND 10 MEGOHM DIGITAL VOLTMETER. EQ. ON, SLIDERS ARE IN CENTER POSITION.
 - 4) VOLTAGES IN RECTANGLES ARE RMS SIGNAL VOLTAGES WITH 0.4V IN. OTHER VOLTAGES ARE D.C. IN CONDITIONS STATED.
 - 5) CIRCUIT GROUND ⏏ DIRTY GROUND ⏏ CHASSIS GROUND ⏏

3	2/12/98	WFB	12A > 12R CAPS PER E970840 ARTWORK TO REV 2	
2	05/25/94	LMA	REV CHG TO REFLECT JUMPER CHG PER E150	
1				
REV	DATE	BY	CHK'D	DESCRIPTION
SIGNATURES:		DATE:		 11860 BORMAN DR. ST. LOUIS, MISSOURI 63148
DRAWN: ERW		3/11/93		
CHK'D: GM		07/09/98		
APP'D: 07/09/98		GM		
ORIGINAL ISSUED:		GM		
PROJECT NAME: SVT-2 PRO				
DRAWING NAME: GRAPHIC EQ. SCHEMATIC				
PLOT DATE: 07/09/98		DRAWING NO. 07S728-02		
PLOT TIME: 10:01:48		REV. 3		
FILE NAME: 72802H3		SCALE: 1:1 SHEET: 1 OF 1		



TO ADJUST BIAS:

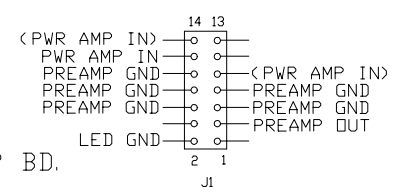
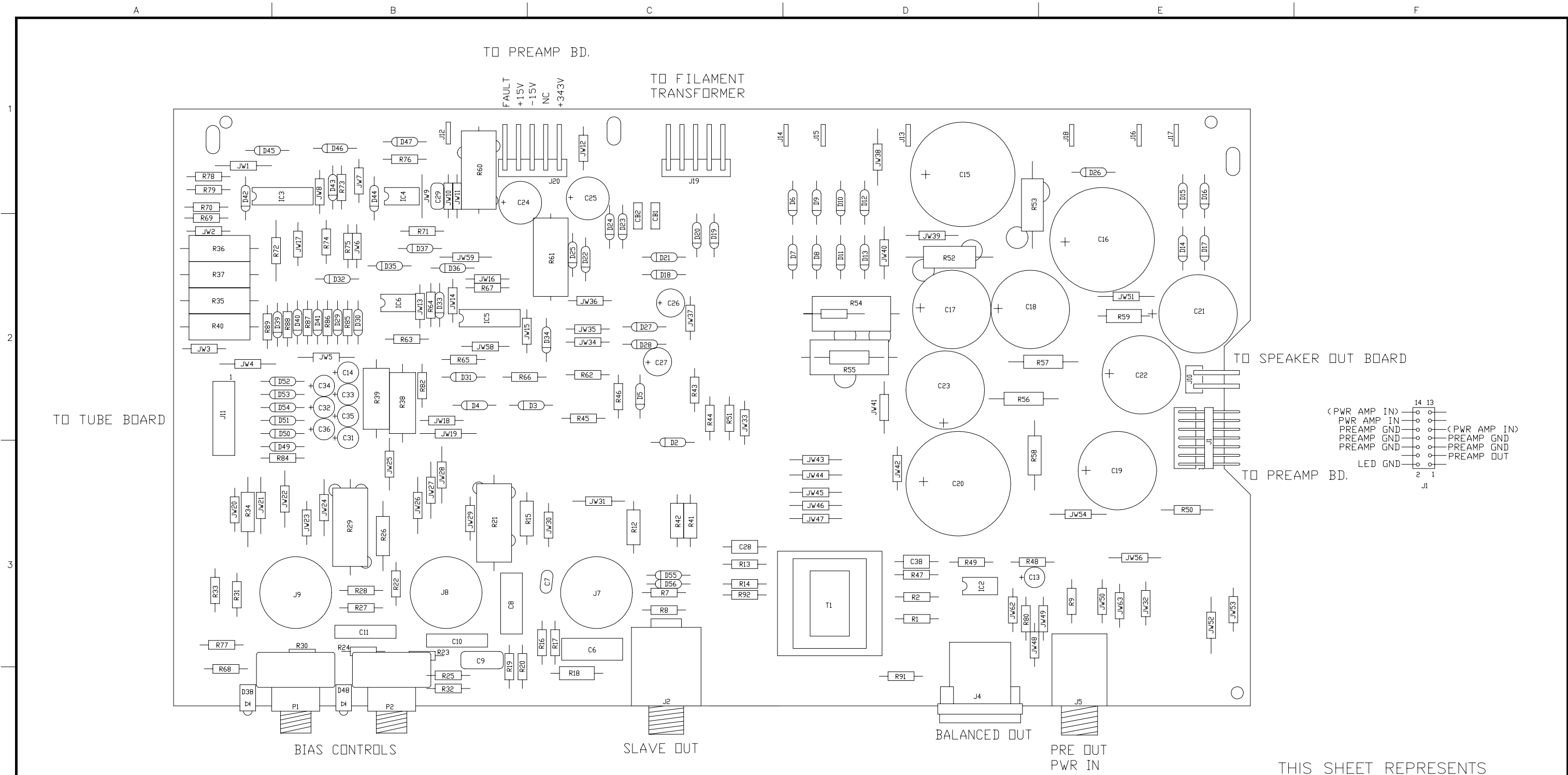
ALLOW UNIT TO WARM UP FOR 20 MINUTES.
 ADJUST BIAS CONTROLS SO THAT ONLY THE GREEN LEDS
 ARE LIT. FOR UNMATCHED TUBES THIS CONDITION MAY
 NOT BE ABLE TO BE MET. IF SO ADJUST CONTROLS
 SO THAT ONLY THE RED LEDS ARE LIT. SEE THE OWNER'S
 MANUAL FOR TROUBLESHOOTING TIPS USING THE BIAS
 CONTROLS AND LEDS.

THIS DRAWING SUPERSEDES 07-419-03/11

PART NO. IS 07-419-04

B	7-28-00	CHANGED PARTS LIST	D000685	RLB		
A	4-11-00	INITIAL ISSUE	D000624			
REV:	DATE:	DESCRIPTION	ECR/ECN NO:	CHNG'D BY:	APPR'D BY:	DATE:
THE INFORMATION CONTAINED ON THIS DRAWING IS PROPRIETARY TO ST. LOUIS MUSIC, INC.						
SIGNATURES:			DATE:			
DRAWN: RLB		12-22-99				
CHK'D:			FIRST USED ON:			
RLS'D:			SVT-2PRO			
TOLERANCES:		DRAWING SIZE: C		DRAWING TITLE:		
		DRAWING TYPE: ASSEMBLY		PWA, POWER AMP		
		CLASS CODE:		DRAWING NO.:		
		SCALE: 1:1 SHEET: 1 OF 4		07-419-XX		

SLM Electronics 11880 Borman Dr.
 St. Louis, Missouri
 63146



THIS SHEET REPRESENTS
PART NO. 07-419-12

TO ADJUST BIAS:

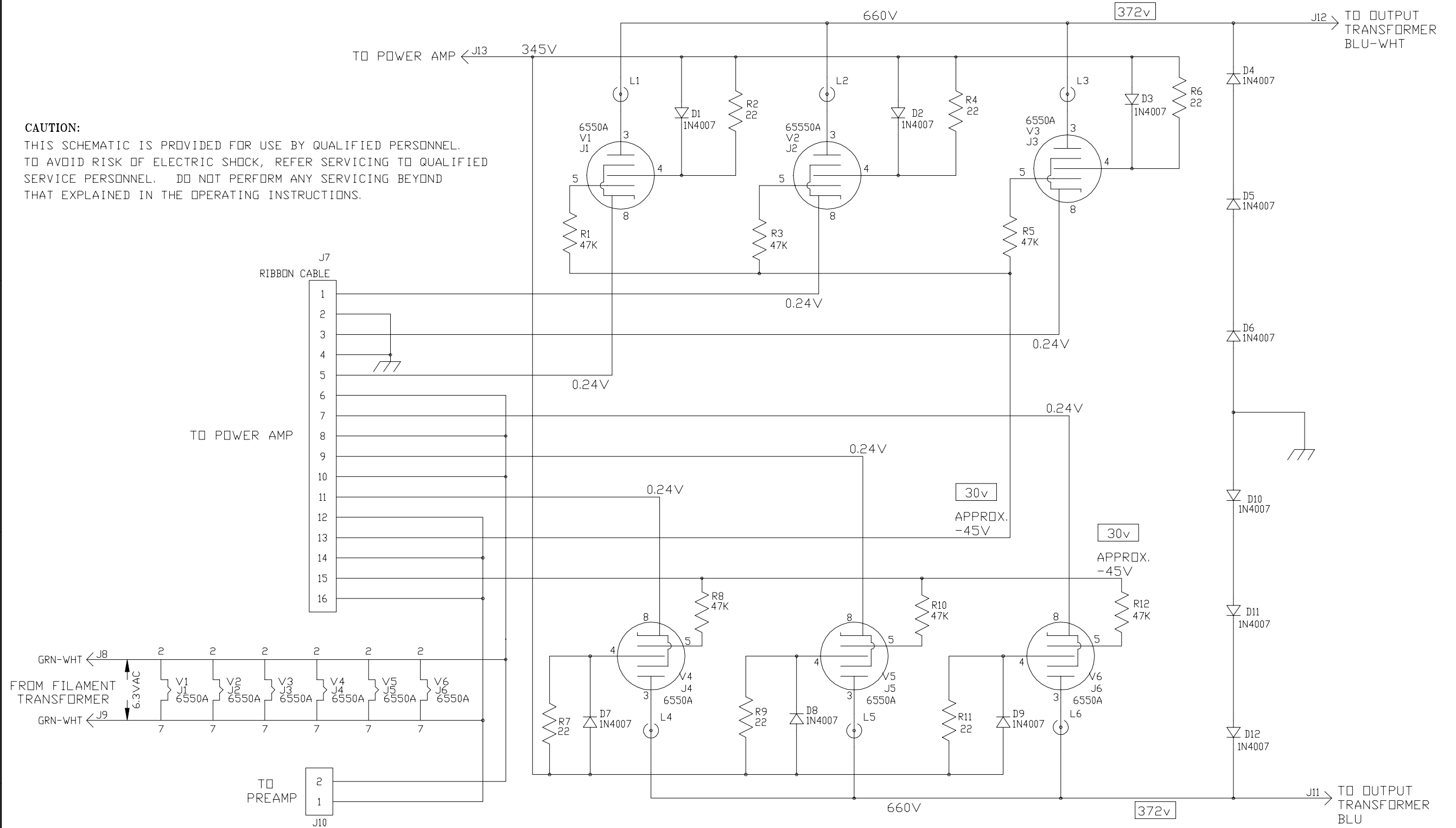
ALLOW UNIT TO WARM UP FOR 20 MINUTES.
ADJUST BIAS CONTROLS SO THAT ONLY THE GREEN LEDES ARE LIT. FOR UNMATCHED TUBES THIS CONDITION MAY NOT BE ABLE TO BE MET. IF SO ADJUST CONTROLS SO THAT ONLY THE RED LEDES ARE LIT. SEE THE OWNER'S MANUAL FOR TROUBLESHOOTING TIPS USING THE BIAS CONTROLS AND LEDES.

B	7-28-00	CHANGED PARTS LIST	D000685	RLB		
A	4-11-00	INITIAL ISSUE	D000624			
REV:	DATE:	DESCRIPTION	ECR/ECN NO:	CHNG'D BY:	APPR'D BY:	DATE:
THE INFORMATION CONTAINED ON THIS DRAWING IS PROPRIETARY TO ST. LOUIS MUSIC, INC.						
SIGNATURES:			DATE:			
DRAWN: RLB			12-22-99			
CHK'D:			FIRST USED ON:			
RLS'D:			SVT-2PRO			
TOLERANCES:	DRAWING SIZE: C		DRAWING TITLE:			
	DRAWING TYPE: ASSEMBLY		PWA, POWER AMP			
	CLASS CODE:		DRAWING NO.:			
	SCALE: 1:1	SHEET: 3 OF 4	07-419-XX			

SLM Electronics 11880 Borman Dr.
St. Louis, Missouri
63146

CAUTION:

THIS SCHEMATIC IS PROVIDED FOR USE BY QUALIFIED PERSONNEL. TO AVOID RISK OF ELECTRIC SHOCK, REFER SERVICING TO QUALIFIED SERVICE PERSONNEL. DO NOT PERFORM ANY SERVICING BEYOND THAT EXPLAINED IN THE OPERATING INSTRUCTIONS.



NOTES

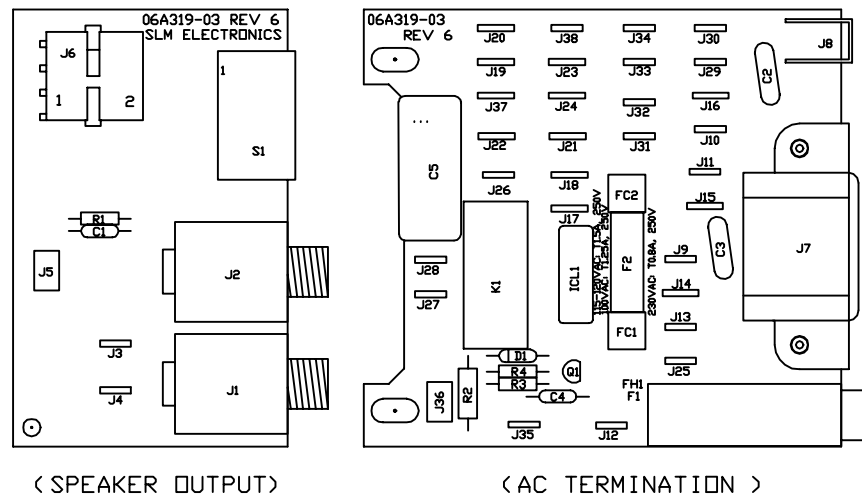
- 1) CAUTION: SHOCK HAZARD!! THIS UNIT CONTAINS HAZARDOUS VOLTAGE. DISCONNECT POWER AND BE SURE POWER SUPPLY IS DISCHARGED BEFORE TOUCHING INTERNAL PARTS.
- 2) UNLESS NOTED, RESISTOR VALUES IN OHMS, 1/4W-5% TOL. CAPACITOR VALUES IN MICROFARADS, 50V-10% TOL.
- 3) VOLTAGES ARE MEASURED WITH 1 MEGOHM OSCILLOSCOPE AND 10 MEGOHM DIGITAL VOLTMETER. VOLTAGES IN RECTANGLES ARE RMS SIGNAL VOLTAGES WITH FULL POWER OUTPUT. OTHER VOLTAGES ARE DC WITH NO SIGNAL.

6				
5				
4	07/27/98	MAG		CHG'S TO PICTORIAL PER ECO 980466.

3	08/30/96	LMA		UPDATED REV TO REFLECT PIC CHANGE E960333
2	05/16/94	LMA		REV CHG TO REFLECT JUMPER CHG PER E150
1				
REV	DATE	BY	CHK'D	DESCRIPTION
SIGNATURES:		DATE:		11880 BORMAN DR. ST. LOUIS, MISSOURI 63146
DRAWN: SWR		03/02/93		
CHK'D:				PROJECT NAME:
APP'D:				SVT-2 PRO
ORIGINAL ISSUED:				DRAWING NAME:
PLOT DATE:		08/14/98		TUBE Bd. SCHEMATIC
PLOT TIME:		14:05:00		REV. 4
FILE NAME:		41941h4_		DRAWING NO. 07S419-41
		SCALE: 1:1		SHEET: 1 OF 1

NOTES

- 1) CAUTION: SHOCK HAZARD!!
THIS UNIT CONTAINS HAZARDOUS VOLTAGE. DISCONNECT POWER AND BE SURE POWER SUPPLY IS DISCHARGED BEFORE TOUCHING INTERNAL PARTS.
- 2) UNLESS NOTED, RESISTOR VALUES IN OHMS, 1/4W-5% TOL. CAPACITOR VALUES IN MICROFARADS, 50V-10% TOL.
- 3) VOLTAGES ARE MEASURED WITH 1 MEGOHM OSCILLOSCOPE AND 10 MEGOHM DIGITAL VOLTMETER.
- 4) CIRCUIT GROUND \perp DIRTY GROUND ∇ CHASSIS GROUND ∇
- 5) GOOD PRACTICE PER USUAL PRACTICE.

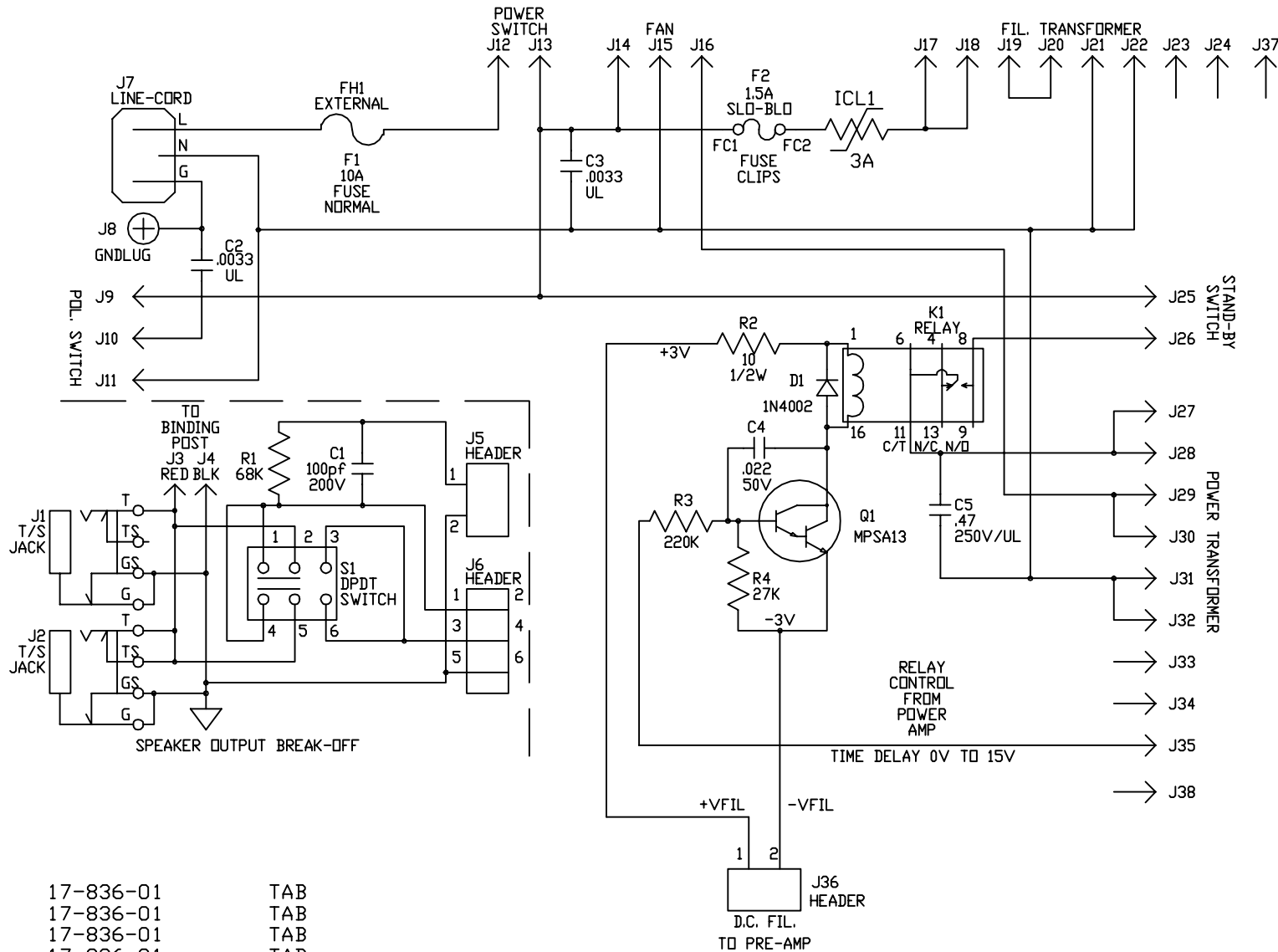


ARTWORK REV. 6

DESIGNATOR PART# DESCRIPTION

C1	10A101-21	100pf	200V
C2	10-332-01	0.0033	UL
C3	10-332-01	0.0033	UL
C4	10A223-01	0.022	50V
C5	10-474-25	0.47	250V/UL
D1	21A402-01	1N4002	
FC1	23-926-02	FUSE	CLIP
FC2	23-926-02	FUSE	CLIP
FH1	23-346-01	FUSE	HOLDER
ICL1	73-501-03	3A INRUSH LIMITER	
J1	39-116-01	T/S	JACK
J2	39-116-01	T/S	JACK
J3	17-836-01	TAB	
J4	17-836-01	TAB	
J5	17-310-02	2PIN	HEADER
J6	17-195-06	6PIN	HEADER
J7	17-604-01	LINE-CORD	CONNECTOR
J8	51-149-01	GNDLUG	
J9	17-894-01	TAB	
J10	17-894-01	TAB	
J11	17-894-01	TAB	
J12	17-836-01	TAB	
J13	17-836-01	TAB	
J14	17-894-01	TAB	
J15	17-894-01	TAB	
J16	17-894-01	TAB	
J17	17-894-01	TAB	
J18	17-894-01	TAB	
J19	17-894-01	TAB	
J20	17-894-01	TAB	
J21	17-894-01	TAB	
J22	17-894-01	TAB	
J23	17-894-01	TAB	
J24	17-894-01	TAB	

J25	17-836-01	TAB
J26	17-836-01	TAB
J27	17-836-01	TAB
J28	17-836-01	TAB
J29	17-836-01	TAB
J30	17-836-01	TAB
J31	17-836-01	TAB
J32	17-836-01	TAB
J33	17-836-01	TAB
J34	17-836-01	TAB
J35	17-836-01	TAB
J36	17-310-02	2PIN
J37	17-894-01	TAB
J38	17-836-01	TAB
K1	82-505-01	RELAY
Q1	96-013-01	MPSA13
R1	76-683-01	68K
R2	77-100-01	10
R3	76-224-01	220K
R4	76-273-01	27K
S1	88-214-02	SWITCH
F1	23-310-01	10A FUSE NORMAL
F2	23-308-05	1.5A FUSE SLO-BLO
PCB1	06A319-03	PC BRD.
MISC. HARDWARE		
(2)	30-638-53	SCREW
(2)	30-700-01	NUT
(1)	23-346-11	FUSE HOLDER CAP



9				
8	11/13/97	SWR		ADDED ICL1, J37, & J38. PER ECO #970682.
7	11/04/96	SWR		CHANGED P/N FOR FC1 & FC2 & LABEL FOR F2. PER ECO #960445.
6	05/07/96	LMA	G. M.	ADDED C5 PER E960093
5	11/08/95	DMM		CHANGED 39-116-51 TO 39-116-01 PER E950348
4	03/22/95	REM		R1 FROM 33K TO 68K RESISTOR.
3	04/11/94	BC		CHANGED F1 FROM 15A TO 10A FUSE (23-315-01 TO 23-310-01) PER ECO E101
2	04/07/94	SWR		CHANGED C2 TO 10-332-01 .0033 UL. PER ECO #E126.
1	08/09/93	SWR		CHANGED P/N FOR PARTS J1 & J2.
REV	DATE	BY	CHK'D	DESCRIPTION
SIGNATURES:		DATE:		11880 BORMAN DR. ST. LOUIS, MISSOURI 63146
DRAWN: ERW		03/11/93		
CHK'D: GM		8/9/93		PROJECT NAME:
APP'D: GM		8/9/93		SVT-2 PRO
ORIGINAL ISSUED:		8/9/93		DRAWING NAME:
PLOT DATE:		11/13/97		AC-TERM BRD.
PLOT TIME:		08:19:22		DRAWING NO. 07P319-03
FILE NAME:		31903p8_		REV. 8
SCALE: 1:1		SHEET: 1 OF 1		