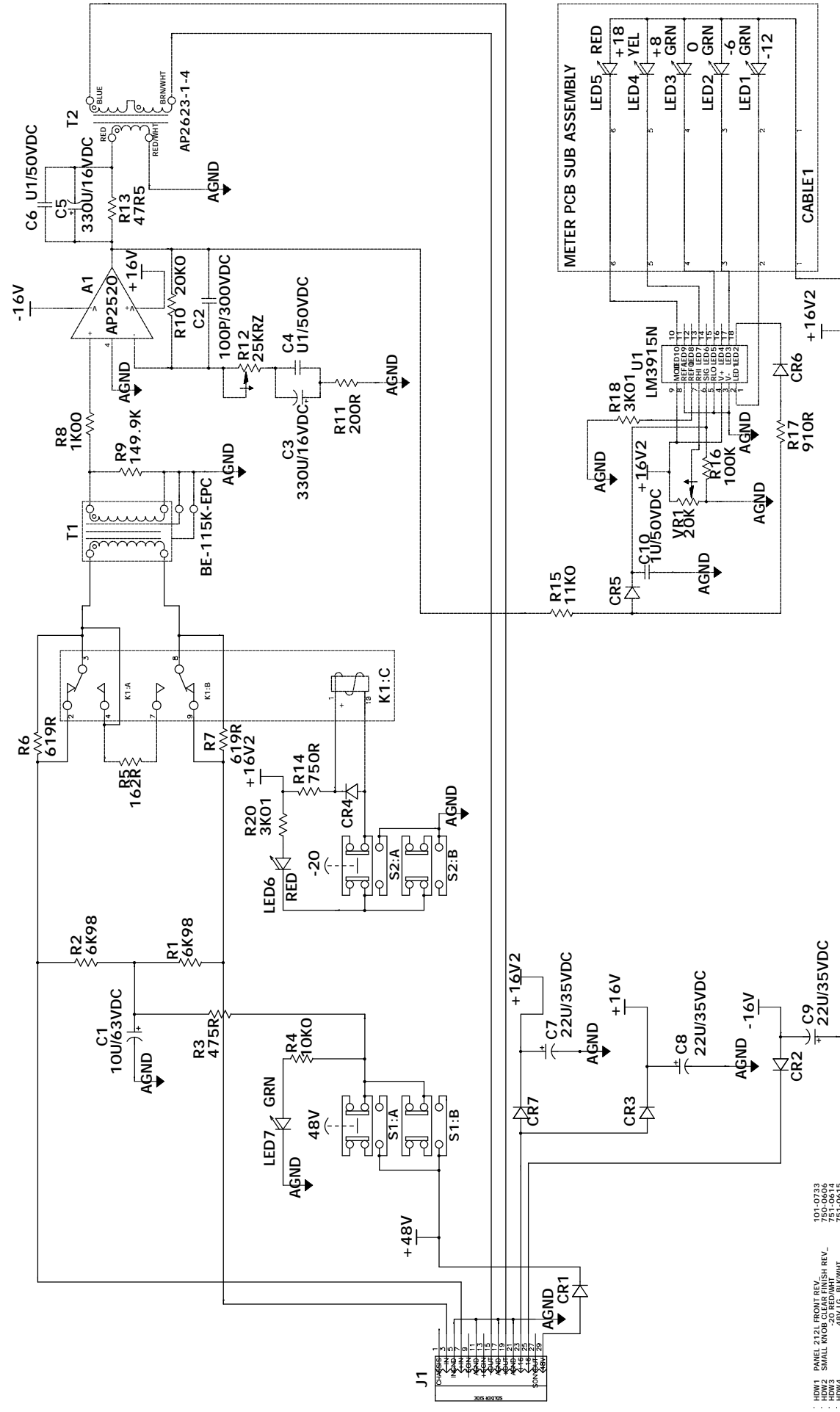


EXCEPT AS MAY BE OTHERWISE PROVIDED BY CONTRACT THESE DIMENSIONS AND SPECIFICATIONS ARE THE PROPERTY OF AUTOMATED PROCESSES, INC. AND ARE ISSUED IN STRICT CONFIDENCE AND SHALL NOT BE REPRODUCED OR COPIED OR USED AS THE BASIS FOR THE MANUFACTURE OR SALE OF APPARATUS WITHOUT PERMISSION.

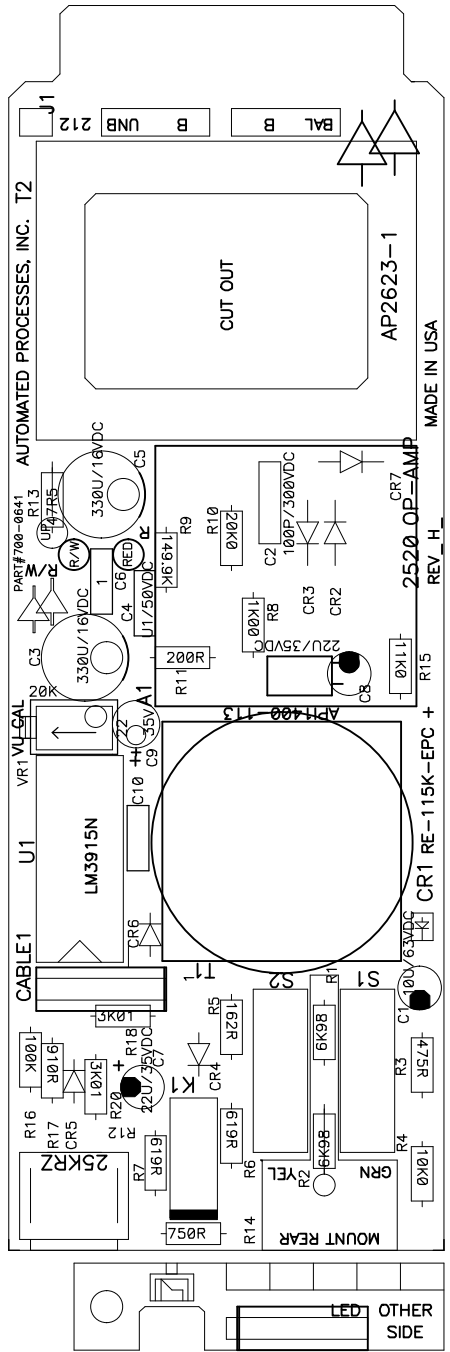


104-0783	154-0783	154-0783	154-0783
750-0606	750-0606	750-0606	750-0606
751-0614	751-0614	751-0614	751-0614
760-0001	760-0001	760-0001	760-0001
080-0004	080-0004	080-0004	080-0004
001-2105	001-2105	001-2105	001-2105
015-0038	015-0038	015-0038	015-0038
003-#4 NYLON	003-#4 NYLON	003-#4 NYLON	003-#4 NYLON
2520 PIN SOCKET	2520 PIN SOCKET	2520 PIN SOCKET	2520 PIN SOCKET
2520 PIN SOCKET	2520 PIN SOCKET	2520 PIN SOCKET	2520 PIN SOCKET
2520 PIN SOCKET	2520 PIN SOCKET	2520 PIN SOCKET	2520 PIN SOCKET
2520 PIN SOCKET	2520 PIN SOCKET	2520 PIN SOCKET	2520 PIN SOCKET
NUT 4-40 SMALL PATTERN	NUT 4-40 SMALL PATTERN	NUT 4-40 SMALL PATTERN	NUT 4-40 SMALL PATTERN
FLAT WASHER #4 SMALL PATTERN	FLAT WASHER #4 SMALL PATTERN	FLAT WASHER #4 SMALL PATTERN	FLAT WASHER #4 SMALL PATTERN
WASHER #4 SMALL PATTERN	WASHER #4 SMALL PATTERN	WASHER #4 SMALL PATTERN	WASHER #4 SMALL PATTERN
#4 SPIRIT LOCK WASHER	#4 SPIRIT LOCK WASHER	#4 SPIRIT LOCK WASHER	#4 SPIRIT LOCK WASHER
008-0003	008-0003	008-0003	008-0003
700-0641	700-0641	700-0641	700-0641
PCBT	PCBT	PCBT	PCBT

104-0783
 750-0606
 751-0614
 760-0001
 080-0004
 001-2105
 015-0038
 003-#4 NYLON
 2520 PIN SOCKET
 2520 PIN SOCKET
 2520 PIN SOCKET
 2520 PIN SOCKET
 NUT 4-40 SMALL PATTERN
 FLAT WASHER #4 SMALL PATTERN
 WASHER #4 SMALL PATTERN
 #4 SPIRIT LOCK WASHER
 008-0003
 700-0641
 PCBT

1	2	3	4	5	6	7	8
A	B	C	D	E	F	G	H

EXCEPT AS MAY BE OTHERWISE PROVIDED BY CONTRACT, THESE DRAWINGS AND SPECIFICATIONS ARE THE PROPERTY OF AUTOMATED PROCESSES, INC., ARE ISSUED IN STRICT CONFIDENCE AND SHALL NOT BE REPRODUCED OR COPIED, OR USED AS THE BASIS FOR THE MANUFACTURE OR SALE OF APPARATUS WITHOUT PERMISSION.



AUTOMATED PROCESSES, INC	
Title	212L MIC PREAMP
Size	Number 45-700-0641
Date	Rev H
Date	Wed May 22, 2002
File name	45-700-0641-H.PCB
Drawn by	JBORK
Approved By	PWOLFF

212L MICROPHONE PREAMPLIFIER
 ASSY#951-0641 REV. H

5/22/2002

Count	Part Number	RefDes	Value	Description
2	001-2105	HDW7		SCREW 4-40X7/8 PHIL PAN SS
		HDW8		SCREW 4-40X7/8 PHIL PAN SS
2	002-0013	HDW18		NUT 4-40 SMALL PATTERN HEX
		HDW19		NUT 4-40 SMALL PATTERN HEX
2	004-0006	HDW20		FLAT WASHER #4 SMALL PATTERN
		HDW21		FLAT WASHER #4 SMALL PATTERN
2	005-0003	HDW22		#4 Split Lock Washer
		HDW23		#4 Split Lock Washer
2	015-0038	HDW9		.093 #4 NYLON
		HDW10		.093 #4 NYLON
6	075-0219	HDW12		2520 PIN SOCKET
		HDW13		2520 PIN SOCKET
		HDW14		2520 PIN SOCKET
		HDW15		2520 PIN SOCKET
		HDW16		2520 PIN SOCKET
		HDW17		2520 PIN SOCKET
1	080-0004	HDW6		18 PIN DIP SOCKET
1	101-0733	HDW1		PANEL 212L FRONT REV_
1	201-0059	R12	25KRZ	PANEL CONTROL
1	202-0022	VR1	20K	VU CAL
1	212-1000	R13	47R5	1% 1/4W METAL FILM 55SIZE
1	212-1001	R8	1K00	1% 1/4W METAL FILM 55SIZE
1	212-1002	R4	10K0	1% 1/4W METAL FILM 55SIZE
1	212-1003	R16	100K	1% 1/4W METAL FILM 55SIZE
1	212-1102	R15	11K0	1% 1/4W METAL FILM 55SIZE
1	212-1503	R9	149.9K	1% 1/4W METAL FILM 55SIZE
1	212-1620	R5	162R	1% 1/4W METAL FILM 55SIZE
1	212-2000	R11	200R	1% 1/4W METAL FILM 55SIZE
1	212-2002	R10	20K0	1% 1/4W METAL FILM 55SIZE
2	212-3011	R18	3K01	1% 1/4W METAL FILM 55SIZE
		R20	3K01	1% 1/4W METAL FILM 55SIZE
1	212-4750	R3	475R	1% 1/4W METAL FILM 55SIZE
2	212-6190	R6	619R	1% 1/4W METAL FILM 55SIZE
		R7	619R	1% 1/4W METAL FILM 55SIZE
2	212-6981	R1	6K98	1% 1/4W METAL FILM 55SIZE
		R2	6K98	1% 1/4W METAL FILM 55SIZE
1	212-7500	R14	750R	1% 1/4W METAL FILM 55SIZE
1	212-9090	R17	910R	1% 1/4W METAL FILM 55SIZE
3	301-0073	C7	22U/35VDC	ELECTROLYTIC CAP
		C8	22U/35VDC	ELECTROLYTIC CAP
		C9	22U/35VDC	ELECTROLYTIC CAP
1	301-6106	C1	10U/63VDC	ELECTROLYTIC CAP
1	305-0011	C10	1U/50VDC	MONO CERAMIC
2	307-5104	C4	U1/50VDC	STACKED METAL FILM
		C6	U1/50VDC	STACKED METAL FILM
1	312-8101	C2	100P/300VDC	SILVER MICA
2	320-2337	C3	330U/16VDC	ELECTROLYTIC CAP
		C5	330U/16VDC	ELECTROLYTIC CAP
1	451-0002	T2		AP2623-1
1	451-0004	T1		BE-115K-EPC
1	500-2520	A1		2520 OP-AMP
3	505-0004	CR2		RECTIFIER DIODE
		CR3		RECTIFIER DIODE
		CR7		RECTIFIER DIODE
4	506-0006	CR1		SWITCHING DIODE
		CR4		SWITCHING DIODE
		CR5		SWITCHING DIODE
		CR6		SWITCHING DIODE
1	508-0034	LED5	RED	18
1	508-0034	LED6	RED	
1	508-0035	LED1	GRN	-12
1	508-0035	LED2	GRN	-6
1	508-0035	LED3	GRN	0
1	508-0035	LED7	GRN	
1	508-0036	LED4	YEL	8
1	510-0074	U1		LM3915N
1	603-0021	S1	48V	4PDT SWITCH
1	603-0021	S2	-20	4PDT SWITCH
1	608-0012	K1	TN2-12V	2PDT 12V RELAY
1	700-0641	PCB1		PRINTED CIRCUIT BOARD REV H
1	750-0606	HDW2		SMALL KNOB CLEAR FINISH REV_
1	751-0614	HDW3		-20 RED/WHT
1	751-0615	HDW4		48V LG. BLK/WHT
1	760-0001	HDW5		INSERT BLUE 5/16
1	871-0021	CABLE1		20 COND. X .1 20 AWG SOLID WIRE*

EXCEPT AS MAY BE OTHERWISE PROVIDED BY CONTRACT, THESE DRAWINGS AND SPECIFICATIONS ARE THE PROPERTY OF AUTOMATED PROCESSES, INC., ARE ISSUED IN STRICT CONFIDENCE AND SHALL NOT BE REPRODUCED OR COPIED, OR USED AS THE BASIS FOR THE MANUFACTURE OR SALE OF APPARATUS WITHOUT PERMISSION.

