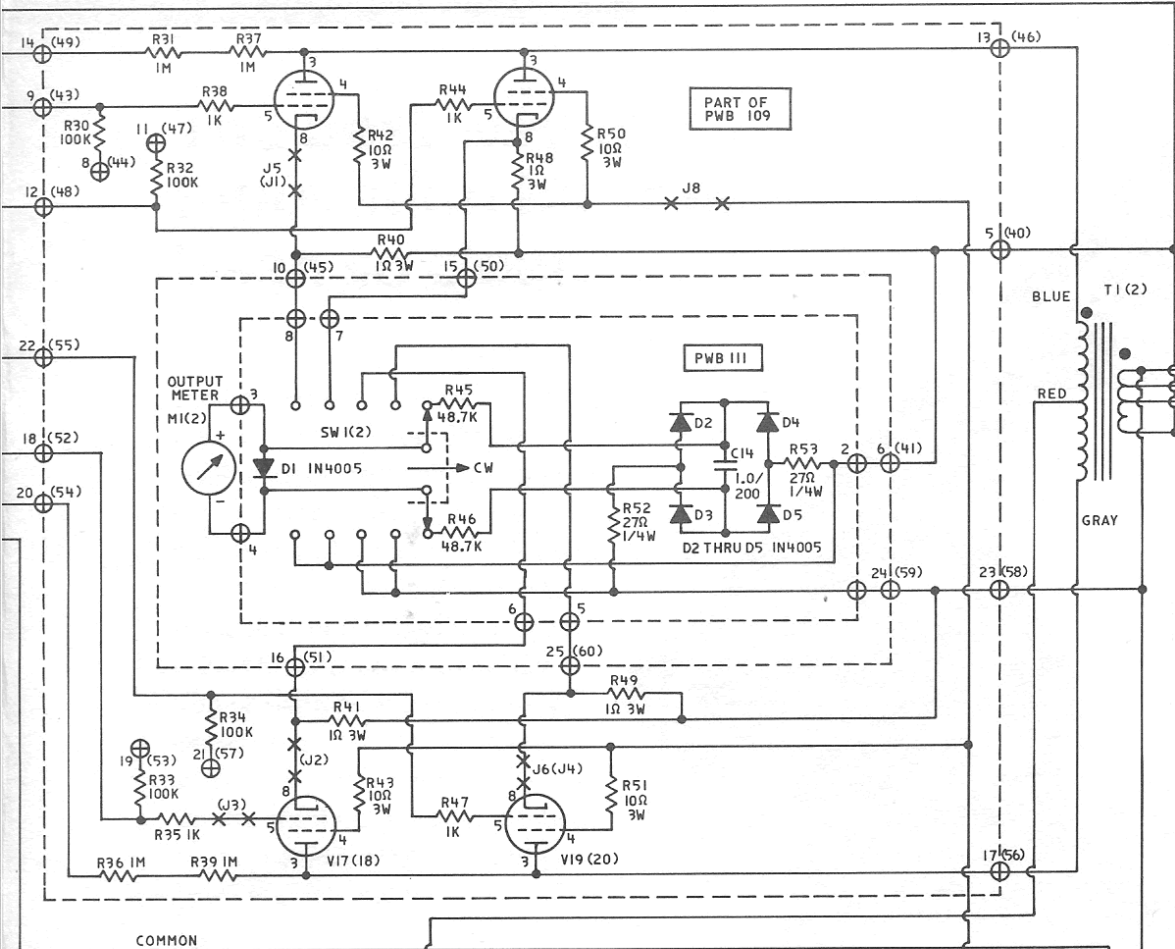


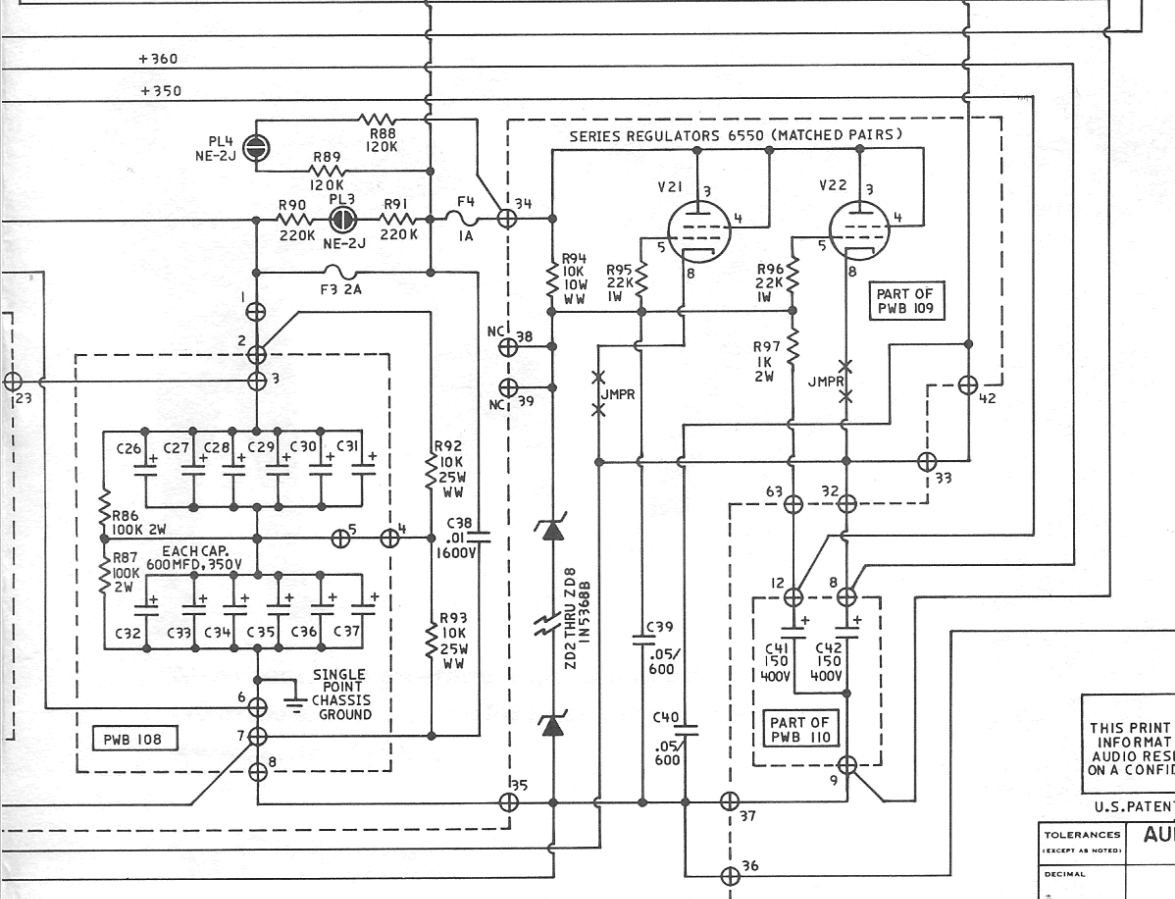
V13(14)  
(MATCHED PAIR)  
6550

V15(16)  
(MATCHED PAIR)  
6550

PARTIALLY CATHODE COUPLED  
CLASS AB-1 OUTPUT STAGE



CAUTION!! 40 OHM  
TAPS ARE GROUNDING.  
AVOID SWITCHING  
SYSTEMS AND TEST-  
ING SYSTEMS WITH  
COMMON GROUND.



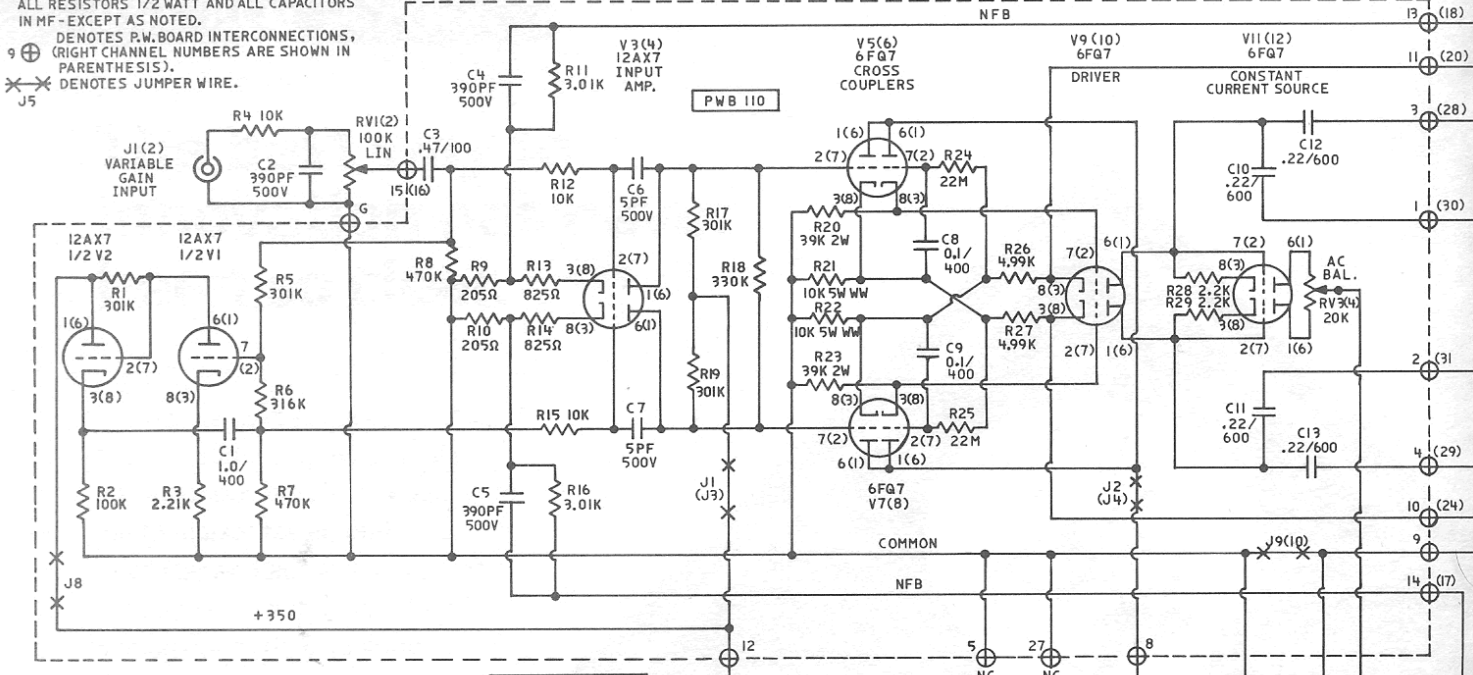
PROPRIETARY NOTICE  
THIS PRINT CONTAINS PATENTED AND/OR OTHER  
INFORMATION CONSIDERED PROPRIETARY BY  
AUDIO RESEARCH CORPORATION AND IS FURNISHED  
ON A CONFIDENTIAL BASIS FOR IDENTIFICATION  
PURPOSES ONLY.

U.S. PATENT NO. 3,538,447

TOLERANCES (EXCEPT AS NOTED)		AUDIO RESEARCH CORPORATION MINNEAPOLIS, MINNESOTA	
DECIMAL		SCALE	DRAWN BY STAN C.
FRACTIONAL		APPROVED BY	
ANGULAR		TITLE SCHEMATIC D-150 AMPLIFIER	
	DATE 12-1-75	DRAWING NUMBER 910014-10 A	

LEFT CHANNEL SHOWN (RIGHT CHANNEL TUBE PIN NUMBERS WHERE DIFFERENT, ARE SHOWN IN PARENTHESIS). ALL RESISTORS 1/2 WATT AND ALL CAPACITORS IN MF - EXCEPT AS NOTED.

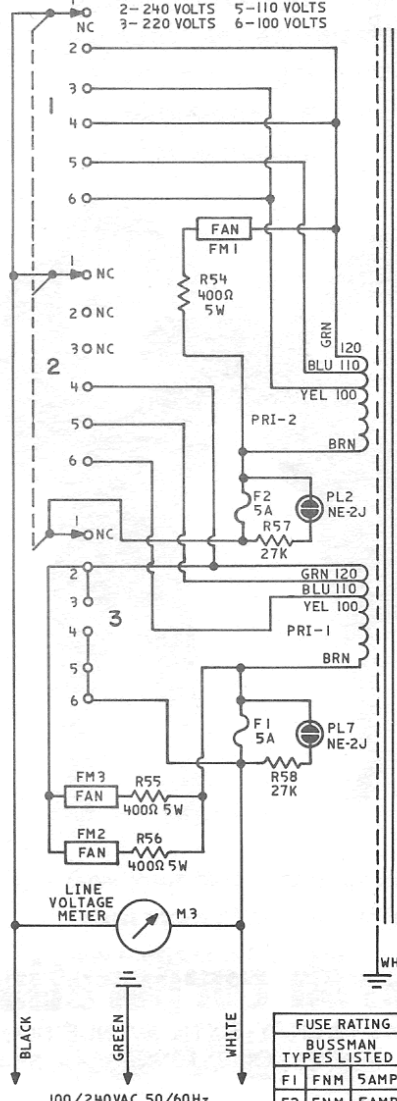
9 ⊕ DENOTES P.W. BOARD INTERCONNECTIONS, (RIGHT CHANNEL NUMBERS ARE SHOWN IN PARENTHESIS).  
 ✕✕ DENOTES JUMPER WIRE.



V1-4 12AX7/ECC83  
 V5-12 6FQ7/6CG7  
 V13-20 6550(4MP)  
 V21-22 6550(1MP)

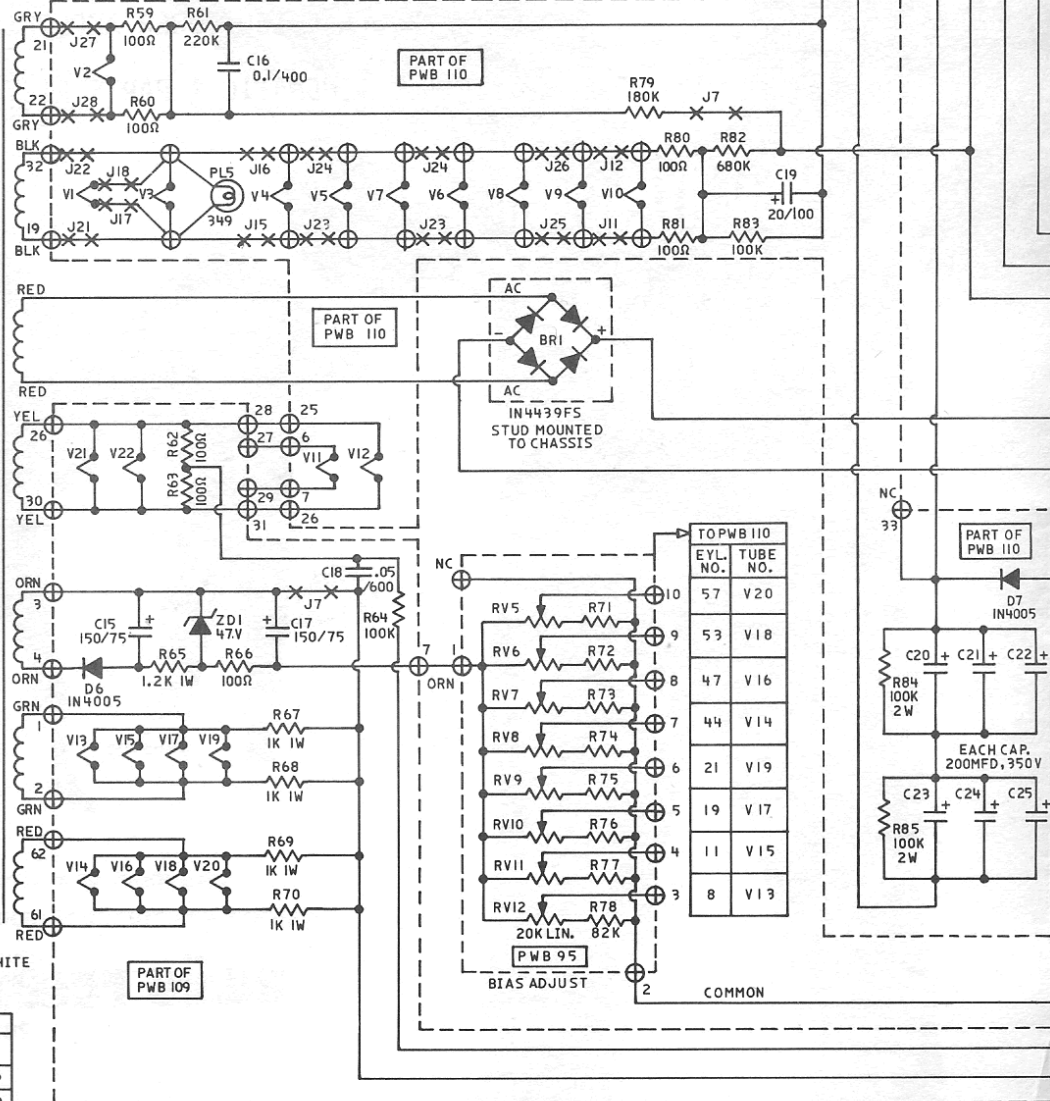
SW3 "ON-OFF" SWITCH  
 3 GANG - 3 POLE - 6 POS.  
 1 - OFF 2 - 120 VOLTS  
 2 - 240 VOLTS 5 - 110 VOLTS  
 3 - 220 VOLTS 6 - 100 VOLTS

POWER XFMR. T3

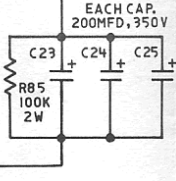


FUSE RATING		
BUSSMAN TYPES LISTED		
F1	FNM	5AMP
F2	FNM	5AMP
F3	KLM	2AMP
F4	KLM	1AMP

100/240VAC, 50/60Hz



TOP PWB 110	
EYL. NO.	TUBE NO.
57	V20
53	V18
47	V16
44	V14
21	V19
19	V17
11	V15
8	V13



EACH CAP. 200MF, 350V