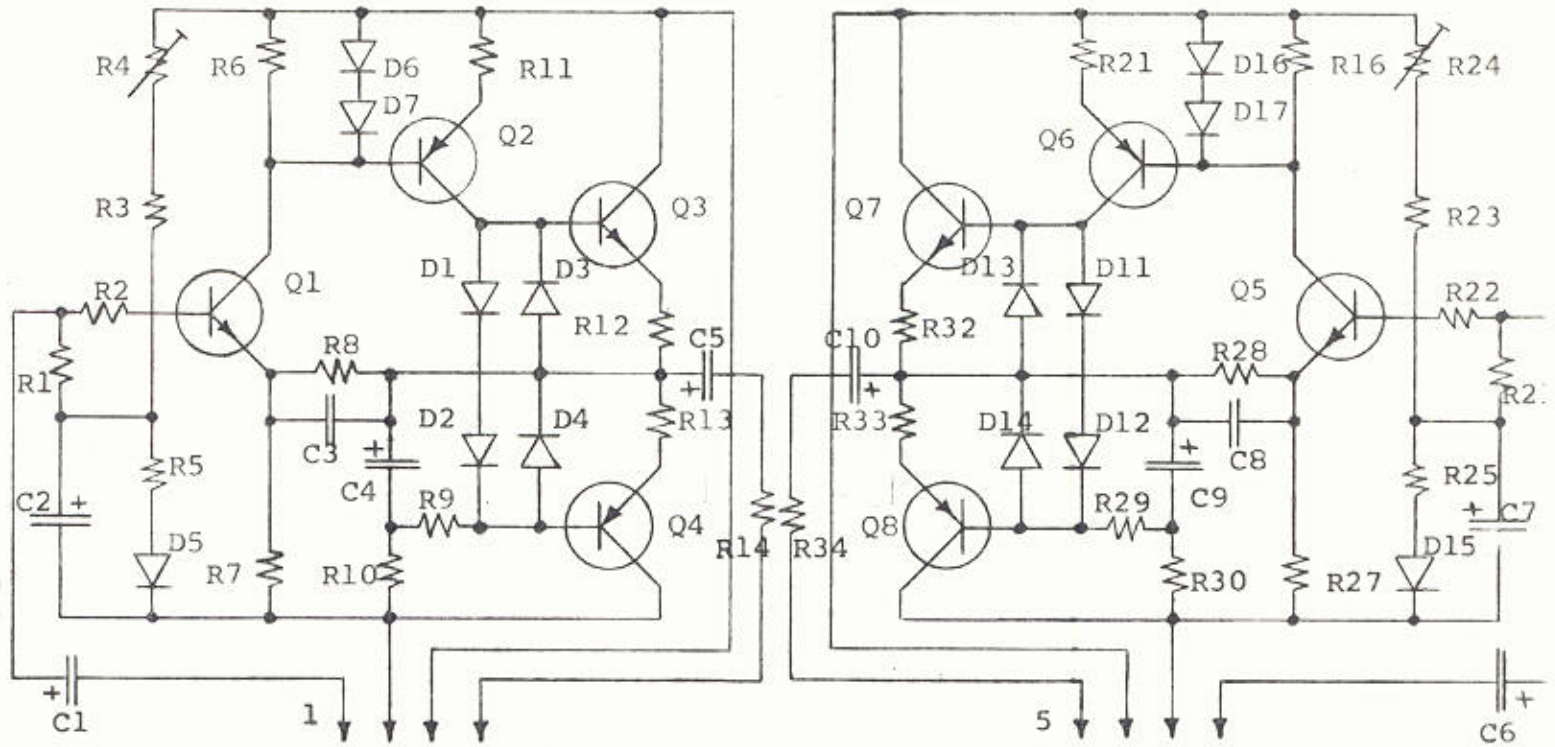


28 dB Line or Monitor (Cue) Amp 1.919.225-11



Resistors

R1, R21	100k	1/8W	5%	B-GmbH	SZC-0309
R2, R22	2.2k	1/8W	5%	B-GmbH	SZC-0309
R3	10k	1/8W	5%	B-GmbH	SZC-0309
R23	4.7k	1/8W	5%	B-GmbH	SZC-0309
R4, R24	20k	Pot	PT	10H (2.5)	Piher
R5, R25	470Ω	1/8W	5%	B-GmbH	SZC-0309
R6, R26	2.7k	1/8W	5%	B-GmbH	SZC-0309
R7, R27	220Ω	1/8W	5%	B-GmbH	SZC-0309
R8	5.6k	1/8W	5%	B-GmbH	SZC-0309
R28	2.2k	1/8W	5%	B-GmbH	SZC-0309
R9, R29	4.7k	1/8W	5%	B-GmbH	SZC-0309
R10, R30	2.2k	1/8W	5%	B-GmbH	SZC-0309
R11, R31	68Ω	1/8W	5%	B-GmbH	SZC-0309
R12, R32	3.9Ω	1/2W	10%	A-B	EB-39G1
R13, R33	3.9Ω	1/2W	10%	A-B	EB-39G1
R14, R34	10Ω	2W	10%	IRC/TRW	BWH

Capacitors

C1, C6	3.3ufd	35V	Matsuo
C2, C7	47ufd	16V	Frako EP-2
C3, C8	22pf		RMC Disc
C4, C9	47ufd	16V	Frako EP-2
C5, C10	220ufd	40V	Frako EP-2

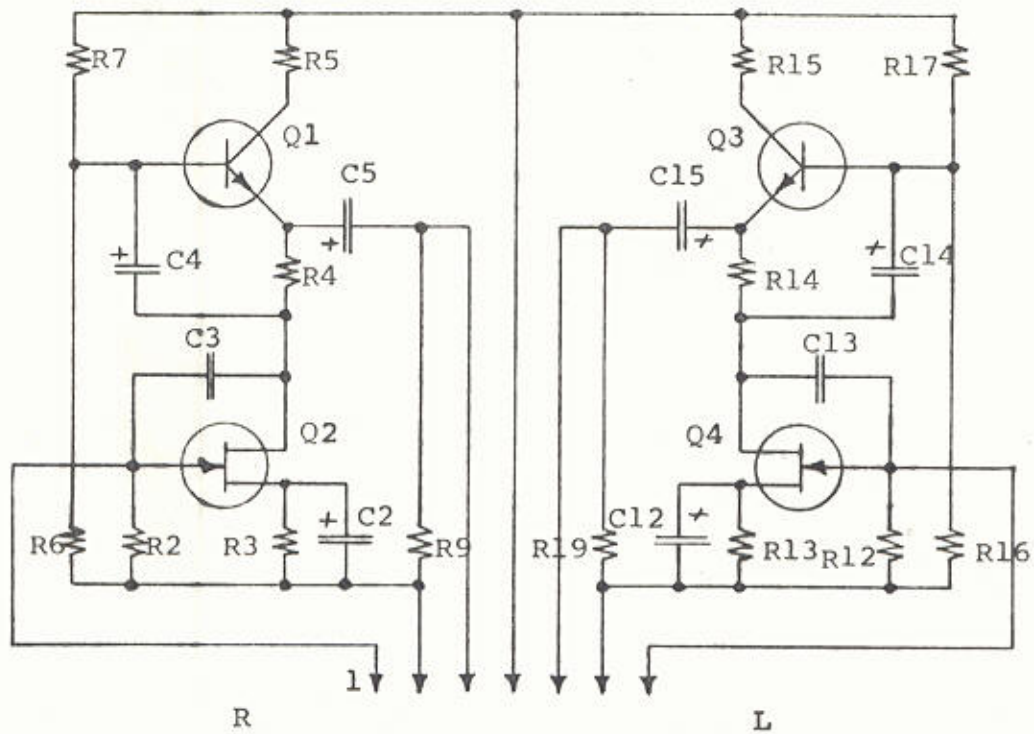
Diodes

D1, D11	1N4003	Q1, Q5	BC107B	Siemens
D2, D12	1N4003	Q2, Q6	BC177B	Siemens
D3, D13	1N4003	Q3, Q7	2N6291	RCA
D4, D14	1N4003	Q4, Q8	2N6108	RCA
D5, D15	1N4448	XQ3, XQ7	Heat Sink	Boza
D6, D16	1N4448	XQ4, XQ8	Heat Sink	Boza
D7, D17	1N4448			

Transistors

CB 1.919.225-11 P.C.I.

SCALE:	
DATE:	



Resistors

(All 1/8W, 5%, carbon film
B-GmbH SZC-0309 unless noted)

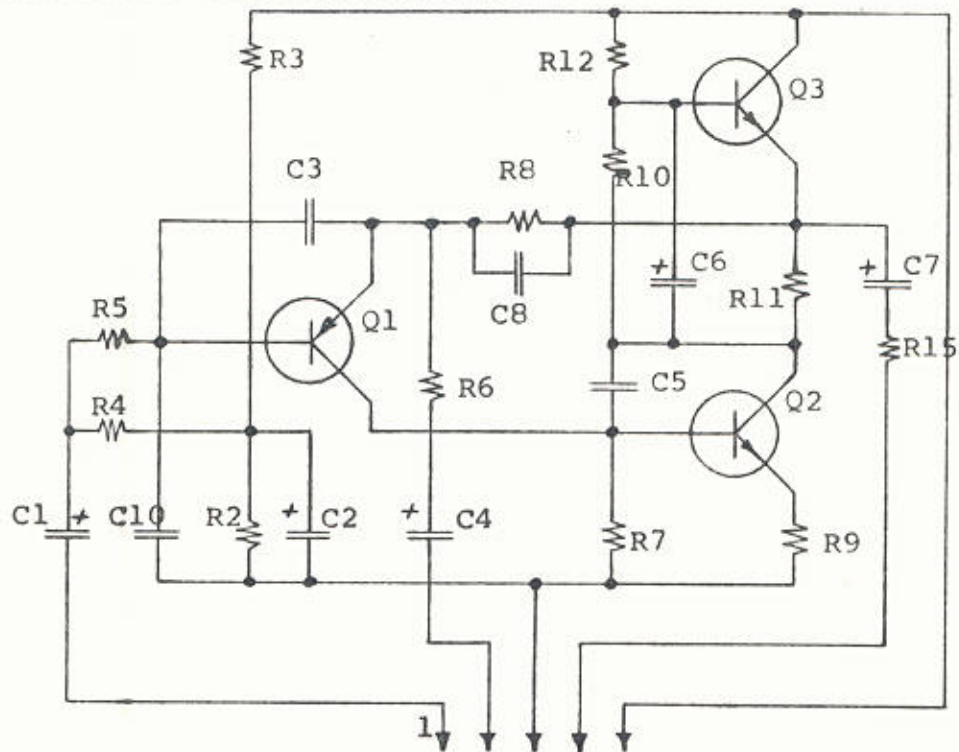
R2, R12	1M
R3, R13	220Ω
R4, R14	470Ω
R5, R15	330Ω
R6, R16	470k
R7, R17	220k
R8, R18	Not assigned
R9, R19	100k

Capacitors

C2, C12	47ufd	16V	Frako EP-2
C3, C13	10pf	10%	RMC Disc
C4, C14	47ufd	6.3V	Matsuo
C5, C15	10ufd	63V	Frako EP-2

Transistors

Q1, Q3	<i>GE-20</i> NPN BC 107B	Siemens
Q2, Q4	FET 2N 3822 <i>FET-1</i>	Teledyne
CB	1,919,180-12	P.C.I.



Resistors

(All 1/8W, 5%, carbon film
B-GmbH SZC 0309 unless noted)

R2	330k
R3	330k
R4	100k
R5	1k
R6	150Ω
R7	15k
R8	10k
R9	47Ω
R10	8.2k
R11	150Ω
R12	100k
R13	not assigned
R14	not assigned
R15	1k

Capacitors

C1	.68ufd	250V	10%	Evox.
C2	22ufd	40V		Frako EP-2
C3	220pf	10%		RMC Disc
C4	100ufd	40V		Frako EP-2
C5	3.3pf	10%		RMC Disc
C6	47ufd	16V		Frako EP-2
C7	10ufd	63V		Frako EP-2
C8	10pf	10%		RMC Disc
C9	not assigned			
C10	68pf	10%		RMC Disc

Transistors

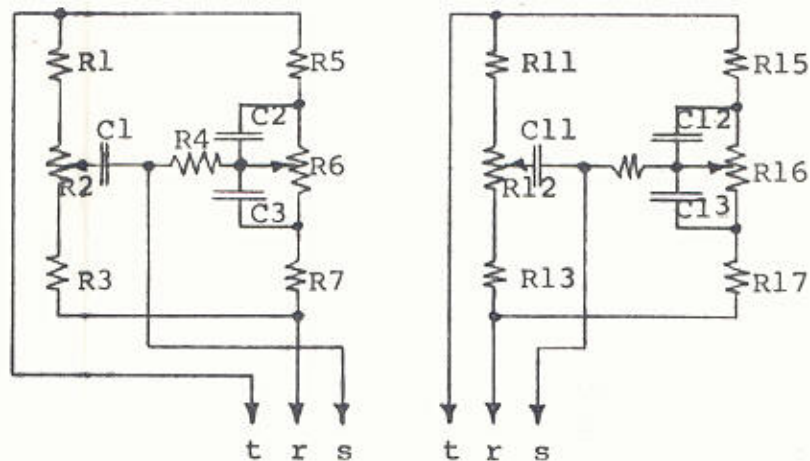
Q1	PNP	BC 177B	Siemens
Q2	NPN	BC 107B	Siemens
Q3	NPN	BC 107B	Siemens

CB 1.919.120-12

P.C.I.



Tone Control Board TC-1-3



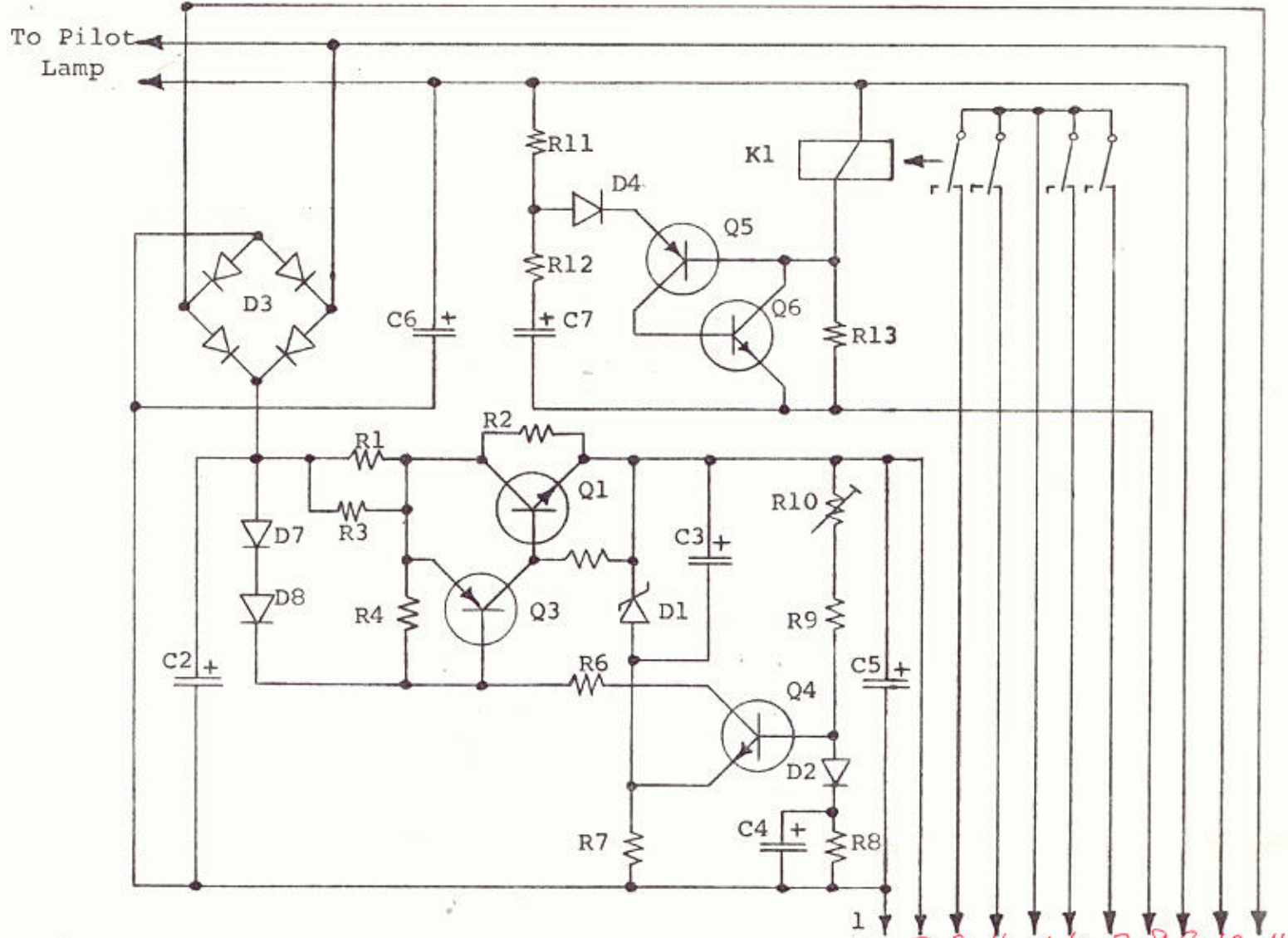
NOTE: Schematic shows 2 individual boards; 1 for left, 1 for right. Both circuits are not on same board.

Comp. Resistors

R1, R11	3.3k	1/2W	10%	AB
R2, R12	50k	Pot		AB
R3, R13	3.3k	1/2W	10%	AB
R4, R14	6.8k	1/2W	5%	AB
R5, R15	12k	1/2W	1%	AB
R6, R16	50k	Pot		AB
R7, R17	12k	1/2W	1%	AB

Capacitors

C1, C11	.0022uf	160V	5%	Siemens
C2, C12	.068uf	100V	5%	Siemens
C3, C13	.068uf	100V	5%	Siemens
Contact Pin	.3775			Vogt
CB	TC-1-3			



Resistors

(All 1/8W, 5% carbon film
B-GmbH SZC-0309 unless noted)

R1, R3 2.2Ω
 R2 1.5k 2W WW IRC/TRW BWH
 R4 2.2k
 R5 220Ω
 R6 10k
 R7, R13 4.7k
 R8 56k
 R9 27k
 R10 20k Potentiometer Philer
 PT-10H-2.5
 R11 15k
 R12 100Ω

Transistors

*Q1 NPN 2N3055 RCA
 Q2 Not assigned
 Q3, Q5 PNP BC-177B Siemens
 Q4, Q6 NPN BC-107B Siemens

Capacitors

(+40VDC)
 C1 Not assigned
 C2 1000uf 63V Frako EF
 C3, C4 22ufd 50V Frako KE I
 C5 100ufd 50V Frako KE I
 C6 10ufd 63V Frako EP 2
 C7 220ufd 25V Frako KE I

Diodes

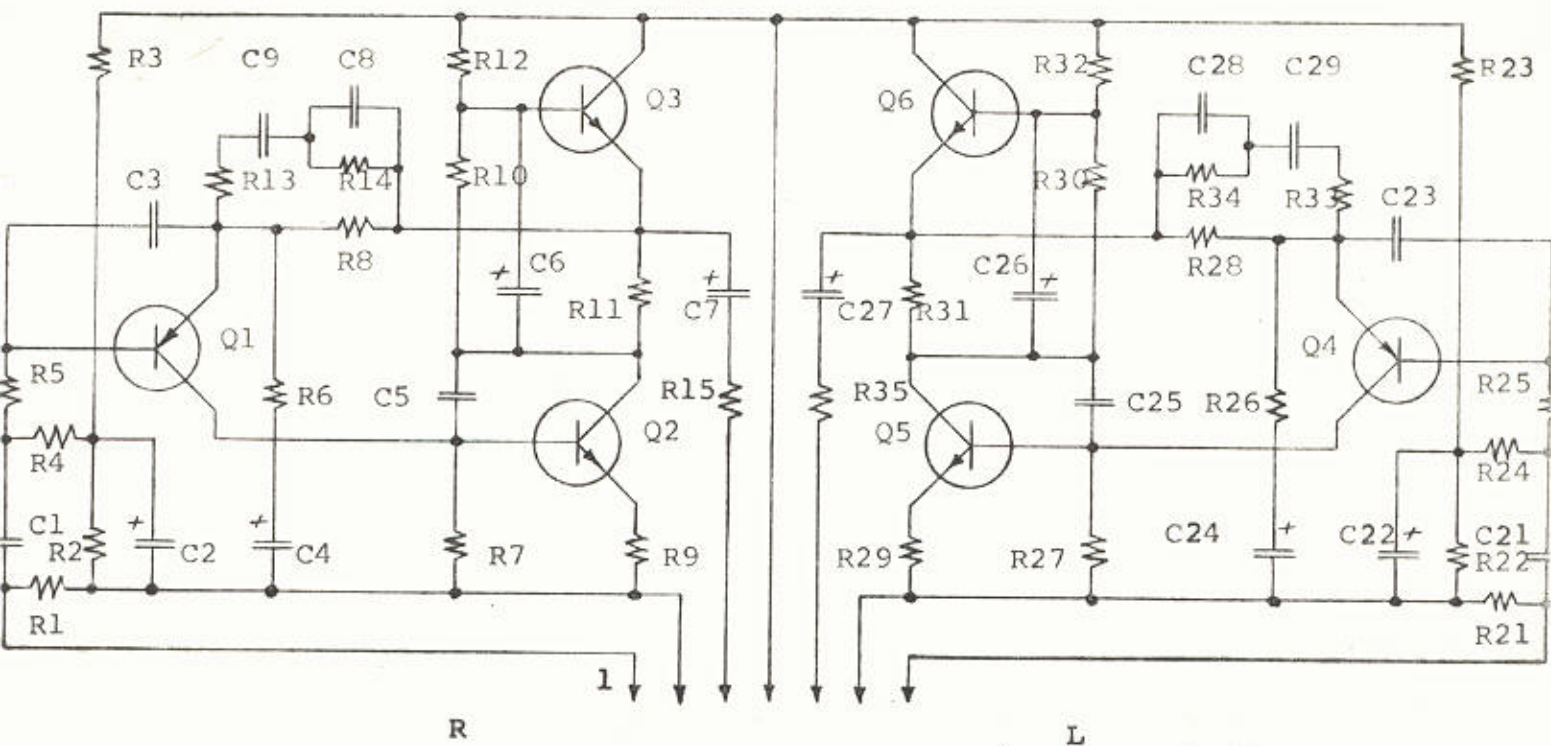
D1 15V Zener Sescosem BZX55-C15
 D2, 4, 7, 8 1N4448 UPI
 D3 Bridge Rect. Gen. Int. W02M
 D5, D6 not assigned

K1 4PDT Relay Babcock NF4-24V-1200Ω

CB 1.919.240-13

* can be substituted by 2N3773
 MJ3772
 MJ3773

RIAA Phono Input Amp 1.919.100-14



Resistors

(All 1/8, 5%, carbon film
B-GmbH SZC 0309 unless noted)

Capacitors

R1, R21	1M
R2, R22	56k
R3, R23	330k
R4, R24	56k
R5, R25	1k
*R6, R26	150Ω, 330Ω
R7, R27	15k
R8, R28	180k
R9, R29	47Ω
R10, R30	8.2k
R11, R31	150Ω
R12, R32	100k
R13, R33	470Ω
R14, R34	12k
R15, R35	1k
R16 through 20 not assigned	

C1, C21	3.3ufd	35V	Matsuo Tan.
C2, C22	22ufd	40V	Frako EP-2
C3, C23	560pf	10%	RMC Disc Z51
C4, C24	100ufd	16V	Frako EP-2
C5, C25	22pf	10%	RMC Disc
C6, C26	47ufd	6.3V	Matsuo
C7, C27	3.3ufd	35V	Matsuo
C8, C28	.0068ufd		Siemens
C9, C29	.018ufd		Siemens

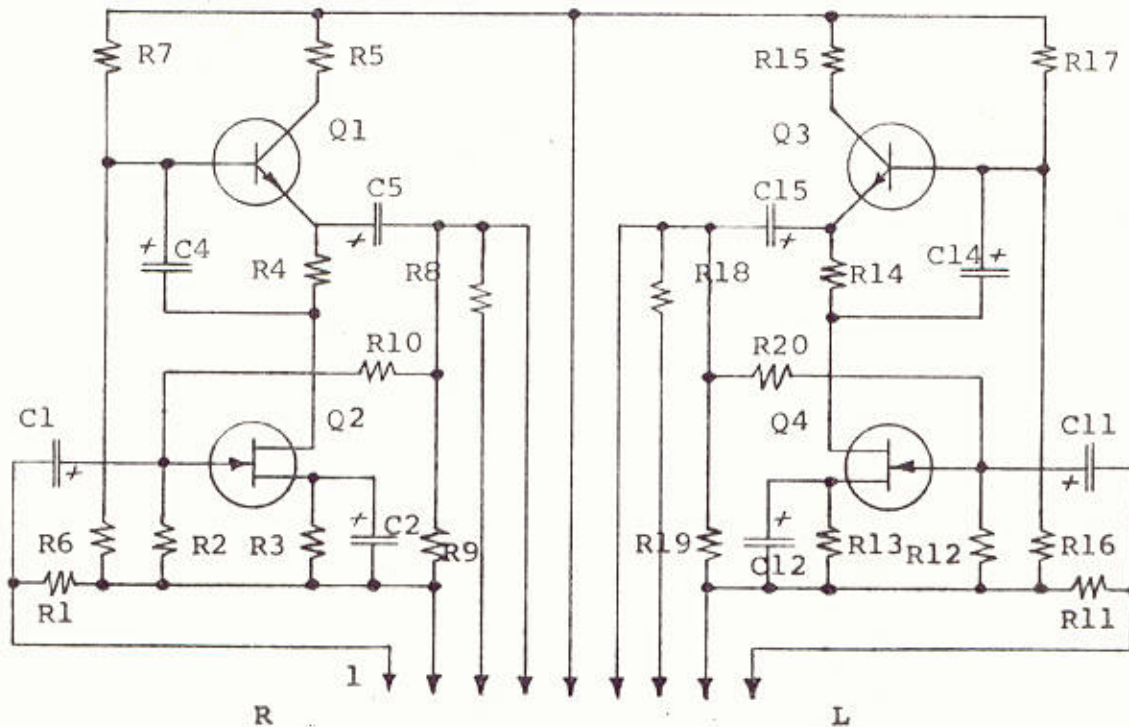
Transistors

Q1, Q4	PNP BC 177B	Siemens
Q2, Q5	NPN BC 107B	Siemens
Q3, Q6	NPN BC 107B	Siemens

CB 1.919.100-14 P.C.I.

* 330Ω for Model 919
150Ω for Model 10-2-DL

SCALE:	
DATE:	



Resistors

(All 1/8W, 5%, carbon film
B-GmbH SZC 0309 unless noted)

R1, R11	1M
R2, R12	1M
R3, R13	470Ω
R4, R14	470Ω
R5, R15	330Ω
R6, R16	470k
R7, R17	220k
*R8, R18	6.8k 0.0Ω
R9, R19	100k
R10, R20	120k

Capacitors

C1, C11	10ufd	100V DC 35V AC	Frako ETF
C2, C12	47ufd	6.3V	Matsuo
C3, C13	not assigned		
C4, C14	10ufd	63V	Frako EP-2
C5, C15	10ufd	63V	Frako EP-2

Transistors

Q1, Q3	NPN	BC 107B	Siemens
Q2, Q4	FET	2N 3822	Teledyne

CB 1.919.140-12

P.C.I.

* 6.8k for Model 919
Wire jumper for Model 10-2-DL