

IBBK

AV-214T
SERVICE MANUAL

IBBK

BOM

Type	Code	Description	Usage
Volume panel B60258	06036	Diode blue light LED Dia3 transparent body	2
	090092	Impulse switch R162EC-3D1-24C B type L=25mm	1
		Other volume panel material	
Control panel B60262	05144	IC PT6311 SOP	1
	05169	IC KA7805	1
	05290	IC CPU FAV-2000PR	1
	06004	Diode red light LED Dia3 red body diffuse normal brightness	1
	08025	Crystal ceramic 4.000MHz	1
	090109	Touch switch KFC-01 6x6x5H	8
	12015	Optical receiver FPS-6038T1	1
	12251	Display screen 28125-1	1
	0202093	Potentiometer rotary B50kx2+C L=20mm B type	2
		Other control panel material	
Amplifier B60264	0300185	Electrolytic capacitor 25V 4700uF ±20% Dia16x30 NOVA	2
	05034	IC LM1875T	3
	05040	IC TDA 2030A ST	2
	05177	IC KA7812	1
	05191	IC KA7912	1
	05263	IC electron volume LC75347	1
	05264	IC M62460FP	1
	08025	Crystal ceramic 4.000MHz	1
	10041	Relay JZX-18FF (Y-330) DC 12V stitch	2
	13072	Fuse 250V T3.15A Dia5x20 VDE/UL/3C	2
	13076	Fuse 250V T1.6A Dia5x20 VDE/UL/3C	2
		Other amplifier material	
Other accessories	090175	AC power switch rocket type KCD5-102 6A/250V	1
	11410	Transformer FAV-2000PR, BT, 220, 0	1
	12033	Receiver YST989-COC2 match AM, FM antenna	1
	B11055	Remote control AV-214T, 91, 010, 0 RC-087	1
		Other material	

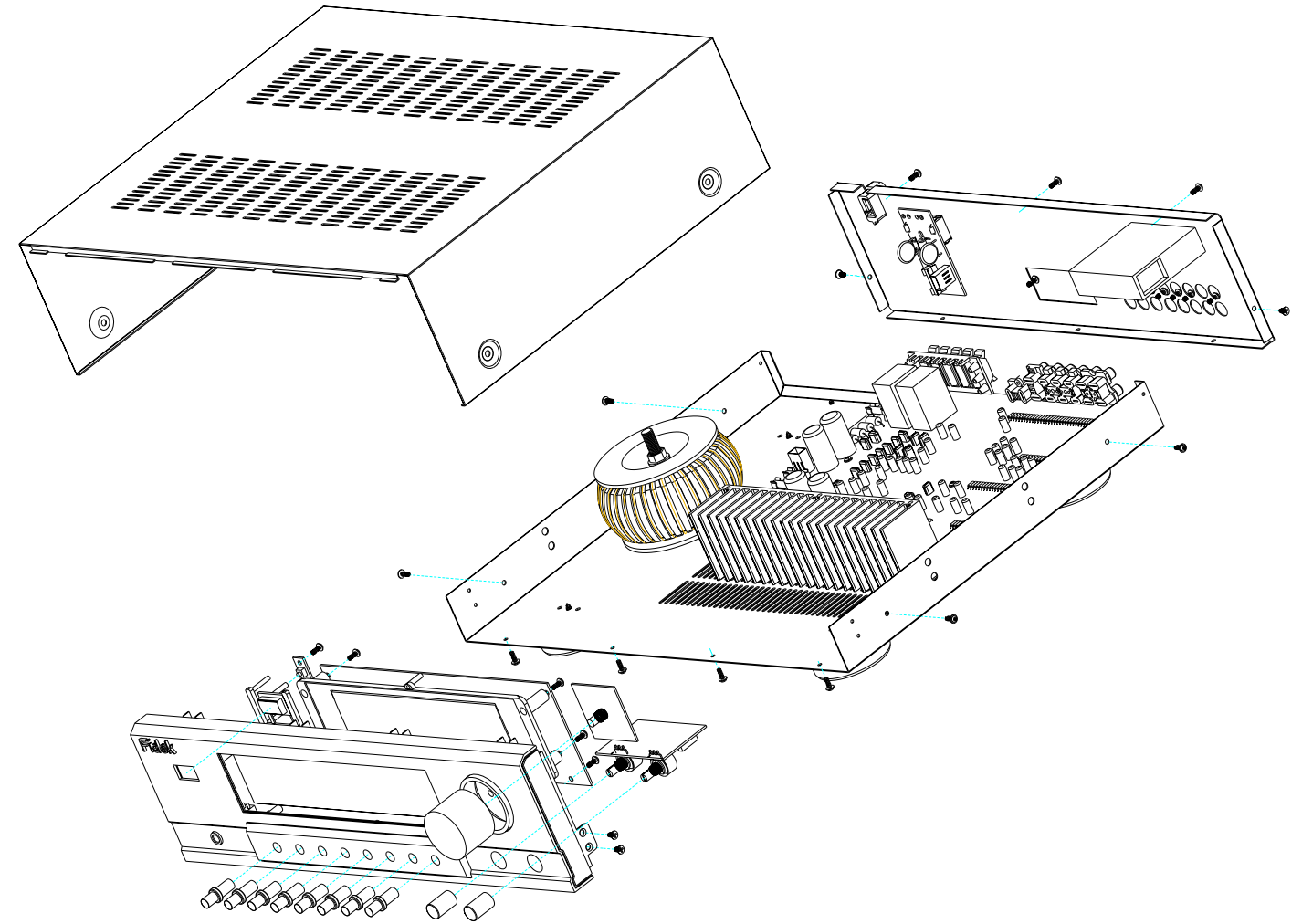
INDEX

Technical parameter	2
Disassembly instruction	3
Flow chart	7
Principle chart	8
PCB board	10
General chart	11
BOM	12

TECHNICAL PARAMETER

power output	: $20W \times 3 + 6W \times 2$ (RAMS)
Impedance of subwoofer	: 4 (OHM)
Impedance of satellite speaker	: 4 (OHM)
Frequency Response:	
Subwoofer	: 20Hz-120Hz
Satellite speaker	: 20Hz-20KHz
Seperation	: ≥ 50 dB
System S/N ratio	: ≥ 70 dB
Input voltage	: AC230V 50Hz

GENERAL CHART



PCB BOARD

DISASSEMBLY INSTRUCTION

Study the cords layout carefully before any takedown. Set them as original after servicing.

Disassembly the amplifier

- Take down four screw A (fig1)
- Take down three screw B (fig2)
- Take down eight screw C (fig3)
- Take down SIP cable terminal D (fig1)
- Move away the amplifier PCB

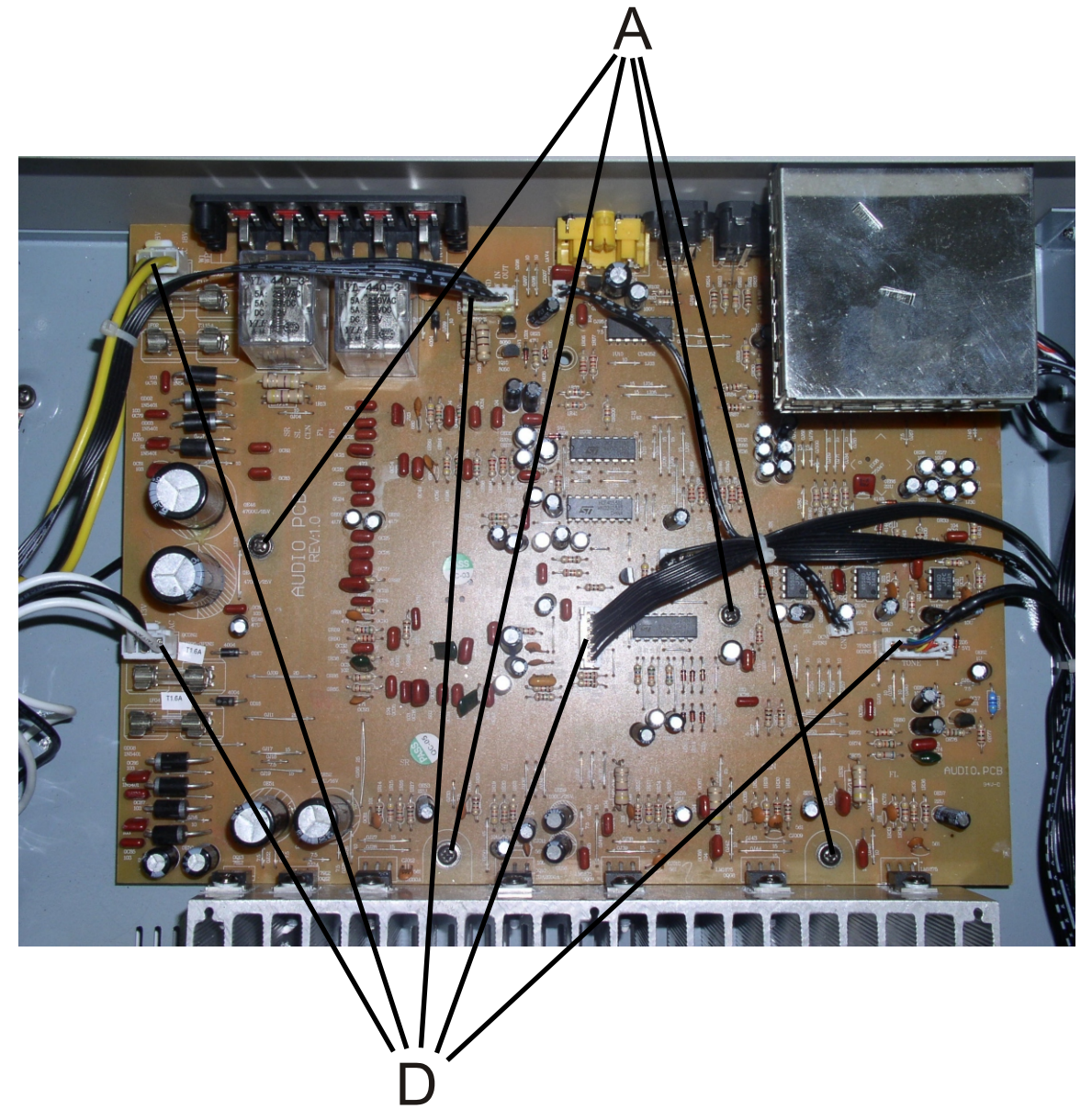
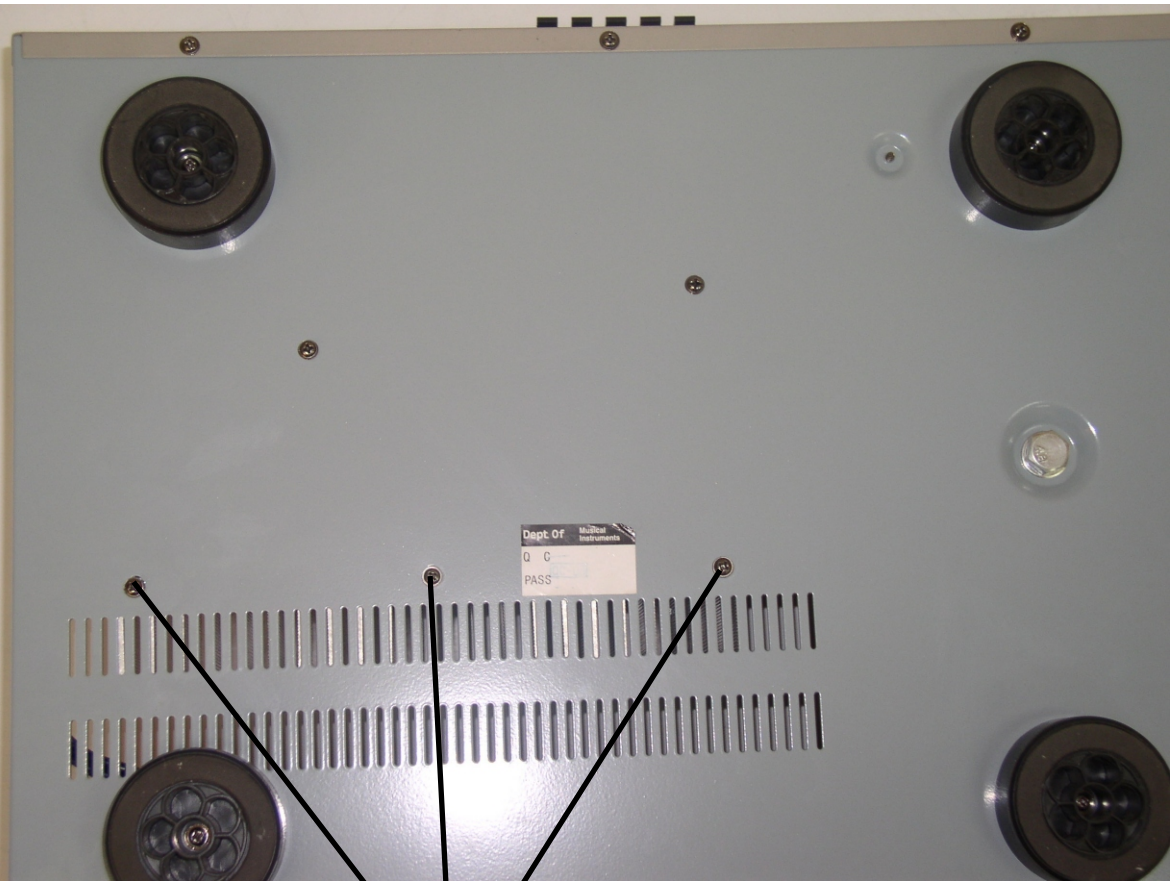
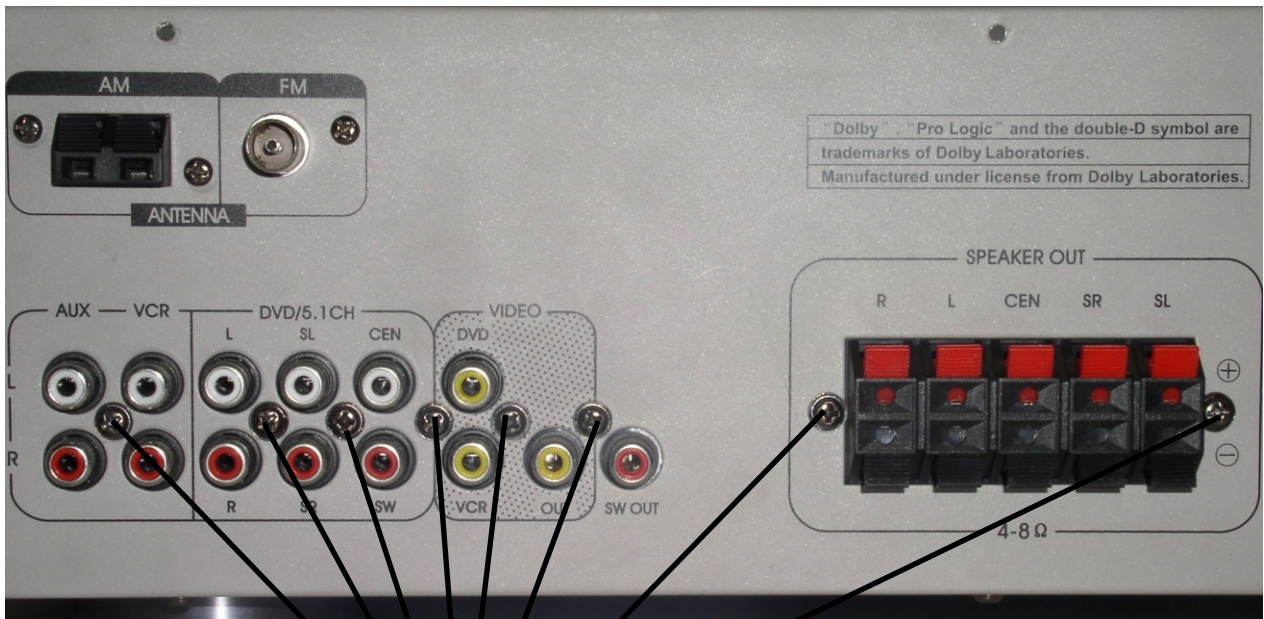
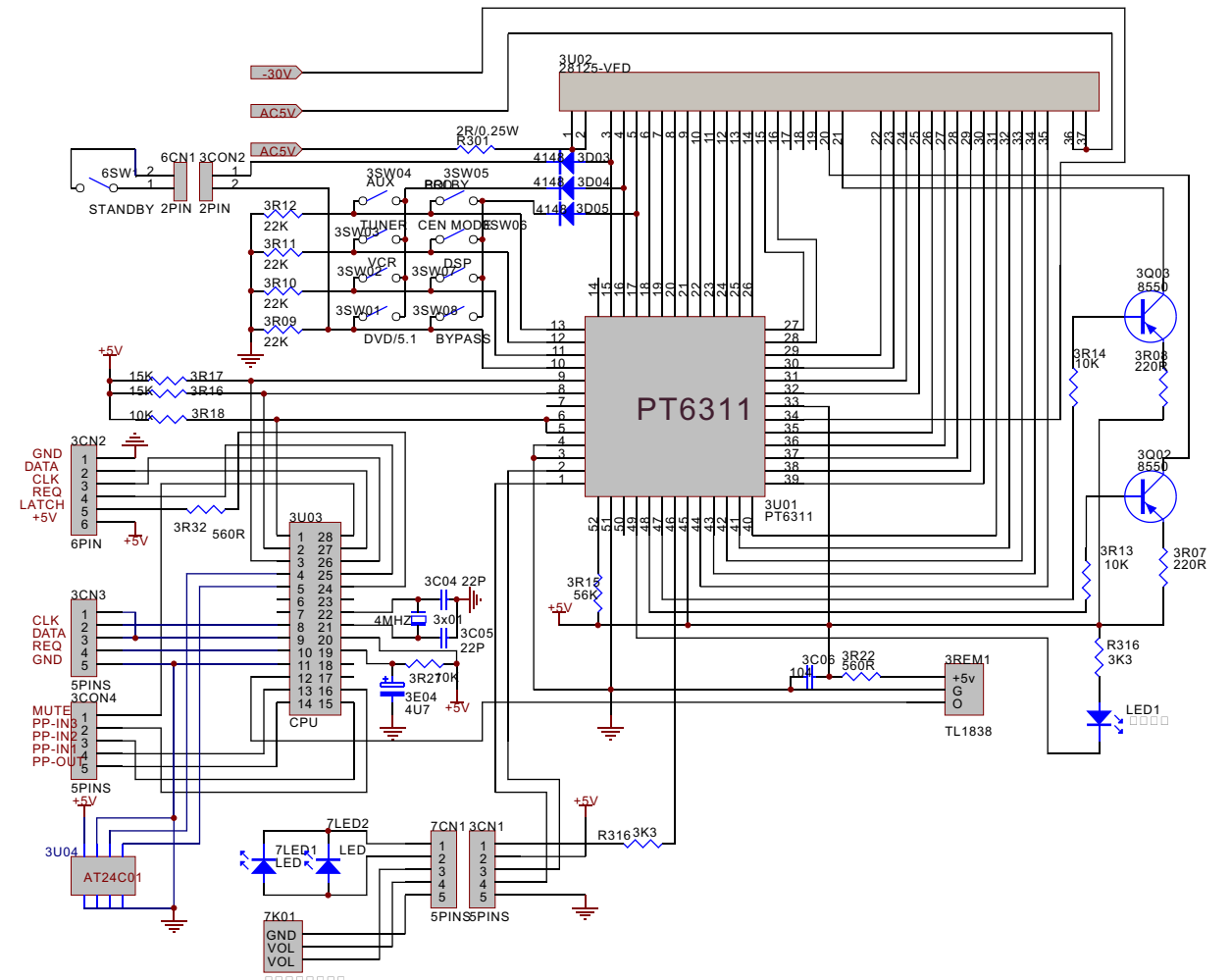


Fig 1

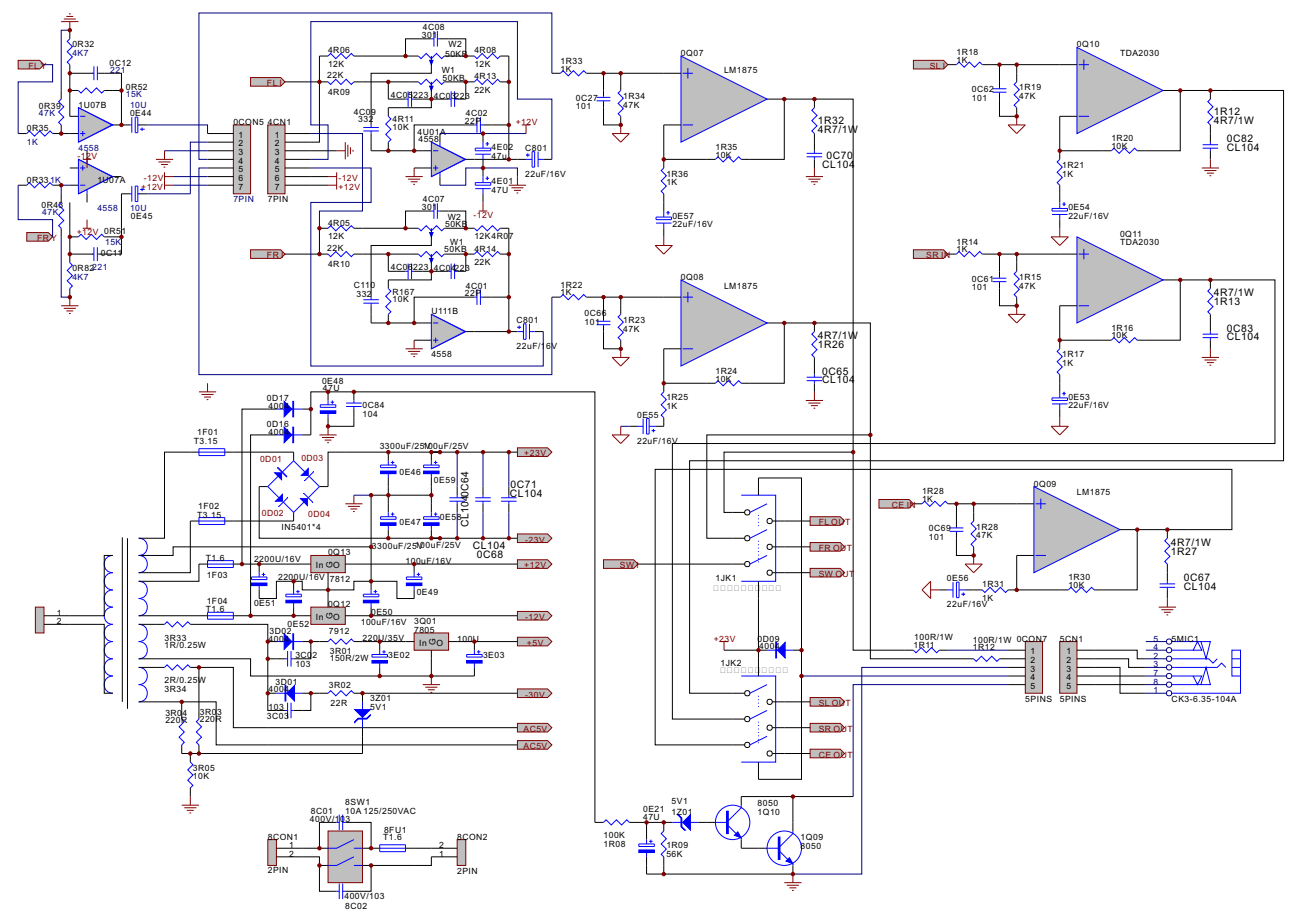


B Fig 2

PRINCIPLE CHART



C Fig 3



PRINCIPLE CHART

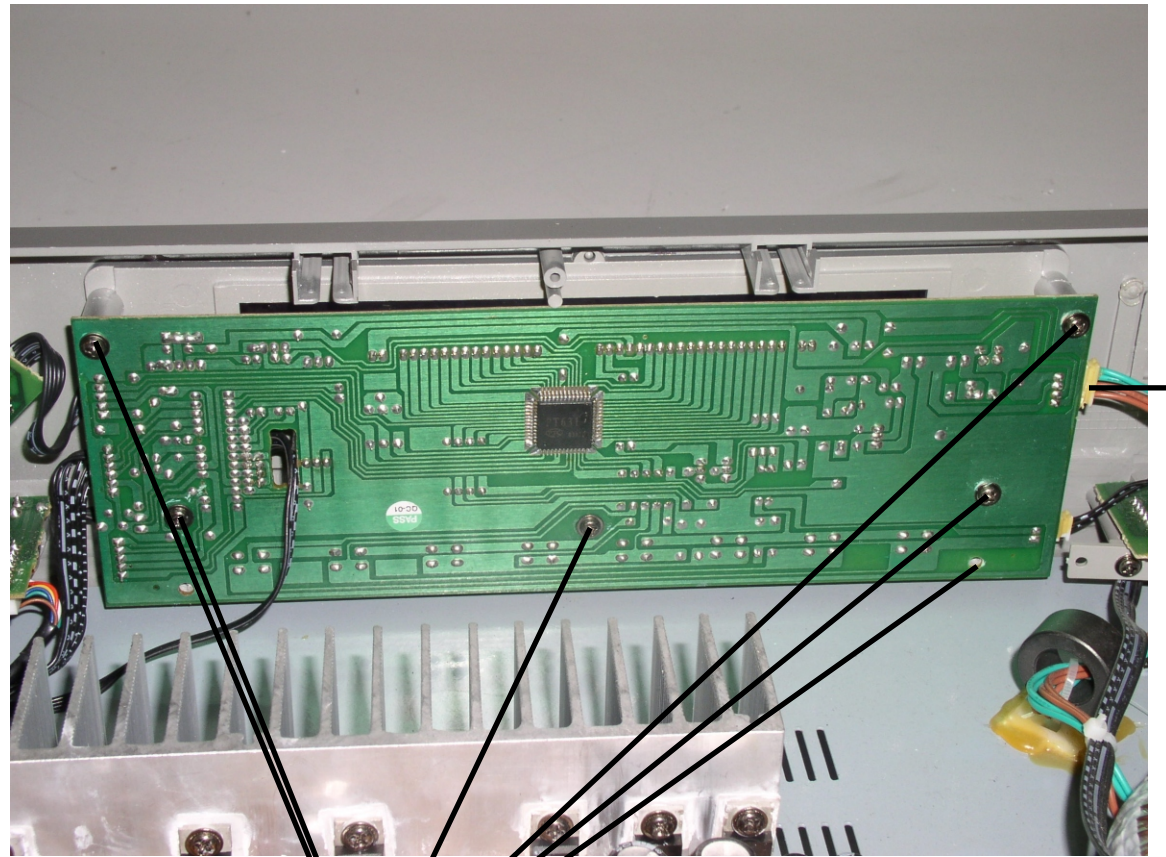
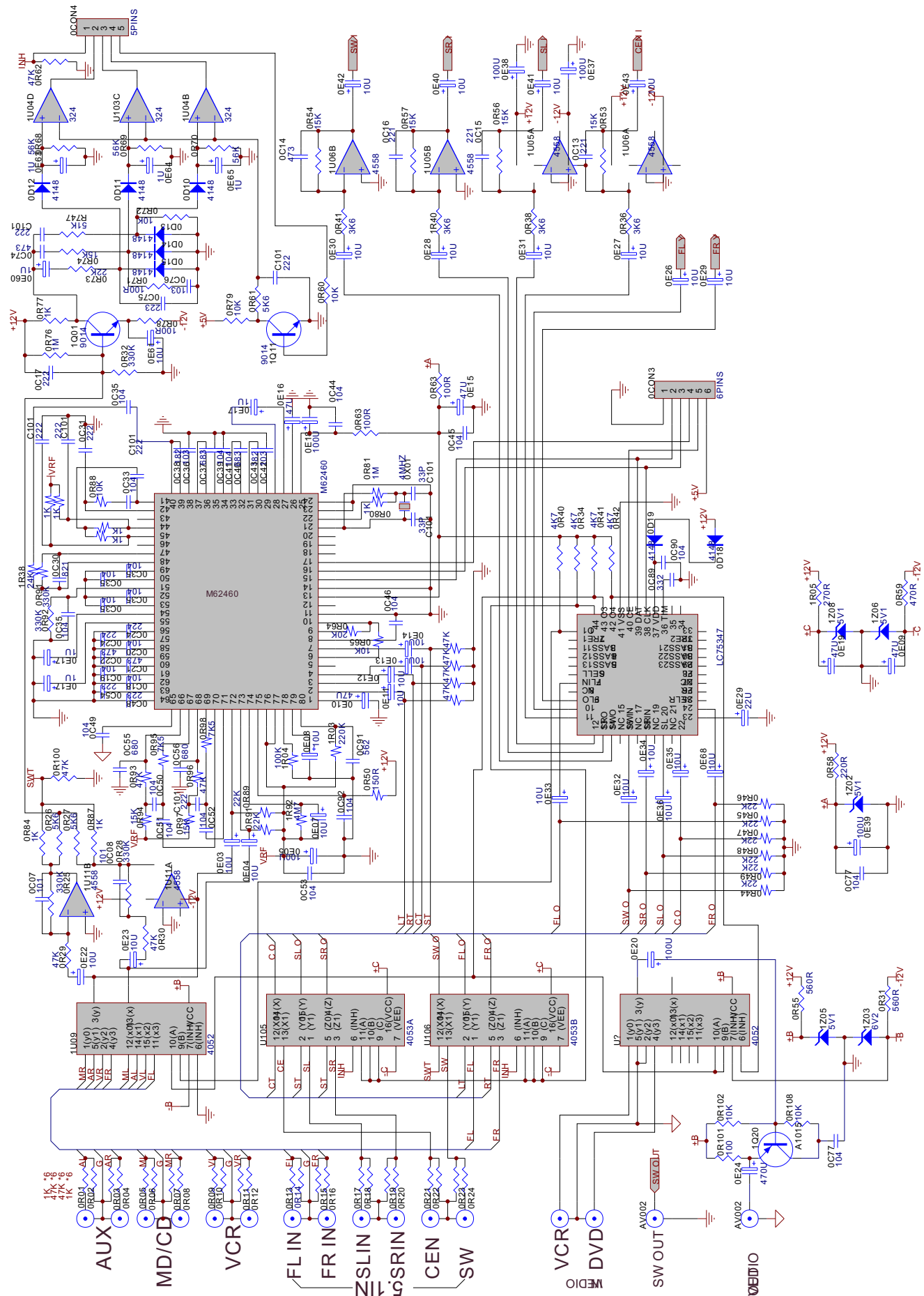
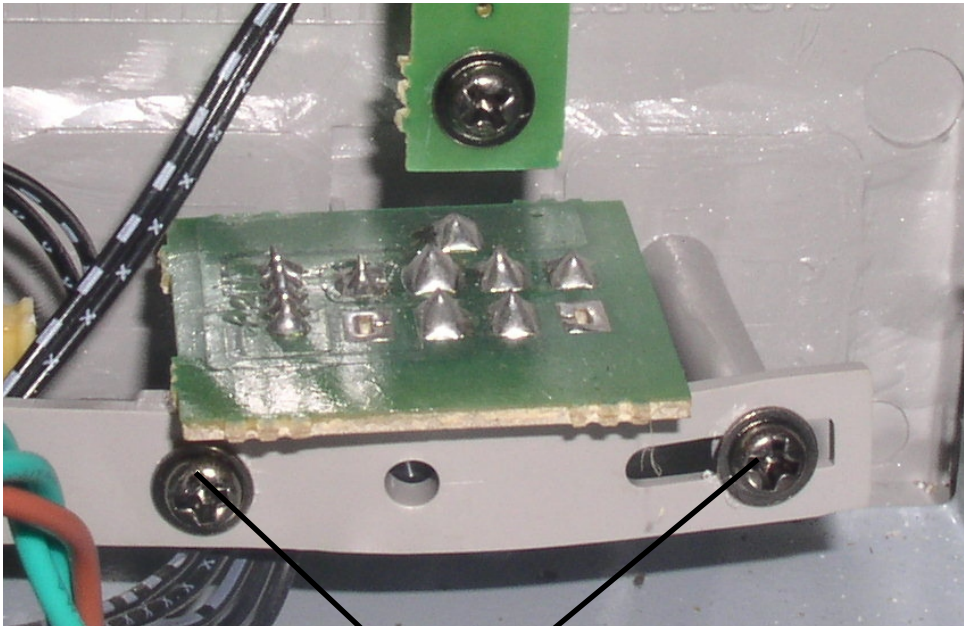


Fig 4

- Disassembly the display screen
- Take down seven screw E on the display screen (fig4)
 - Take down SIP cable terminal F (fig4)
 - Move away the display screen

Disassembly the earphone
-Take down two screw G (fig5)
-Move away the earphone panel



G
Fig 5

FLOW CHART

