

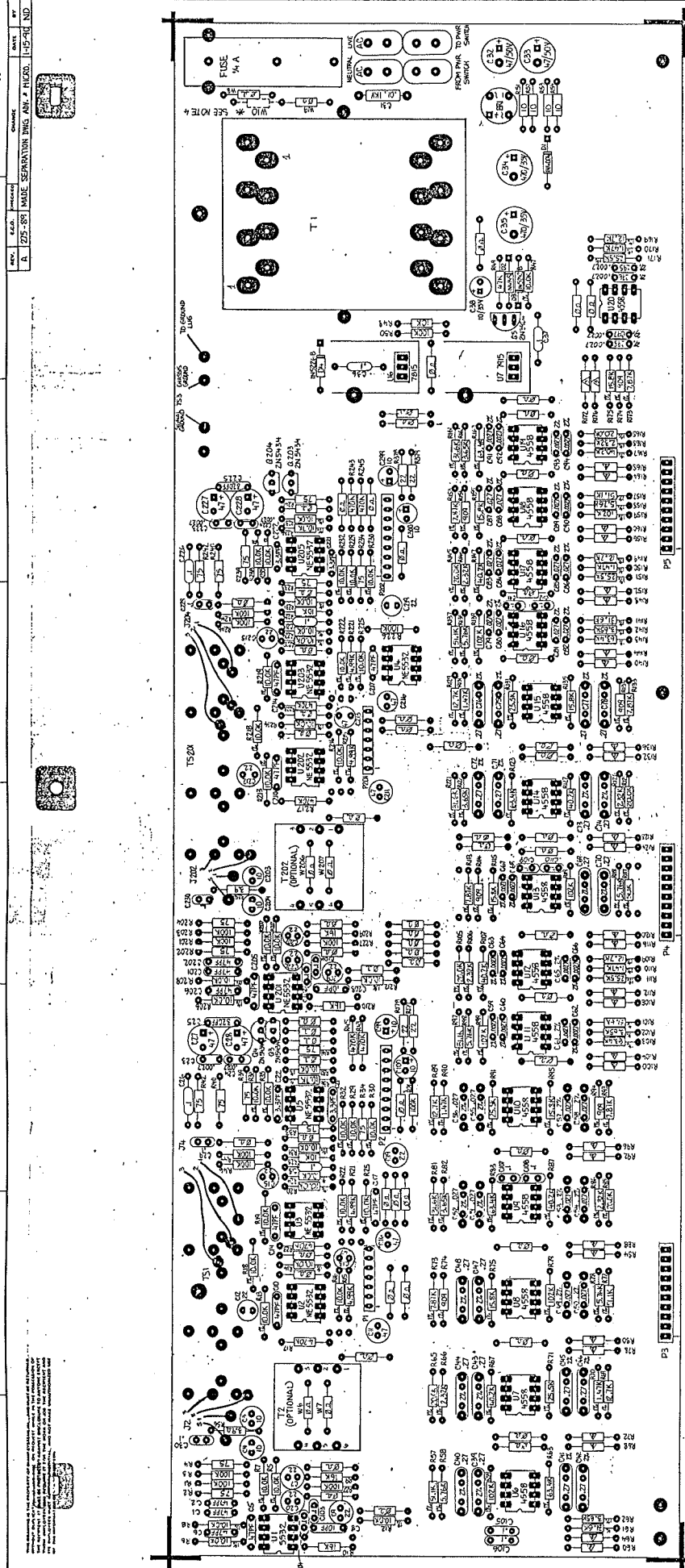
Advantage EQ 152 & 301

Schematic Manual

B I A M P[®]

S Y S T E M S

10074 SW Arctic Drive Beaverton, OR 97005 503-641-7287



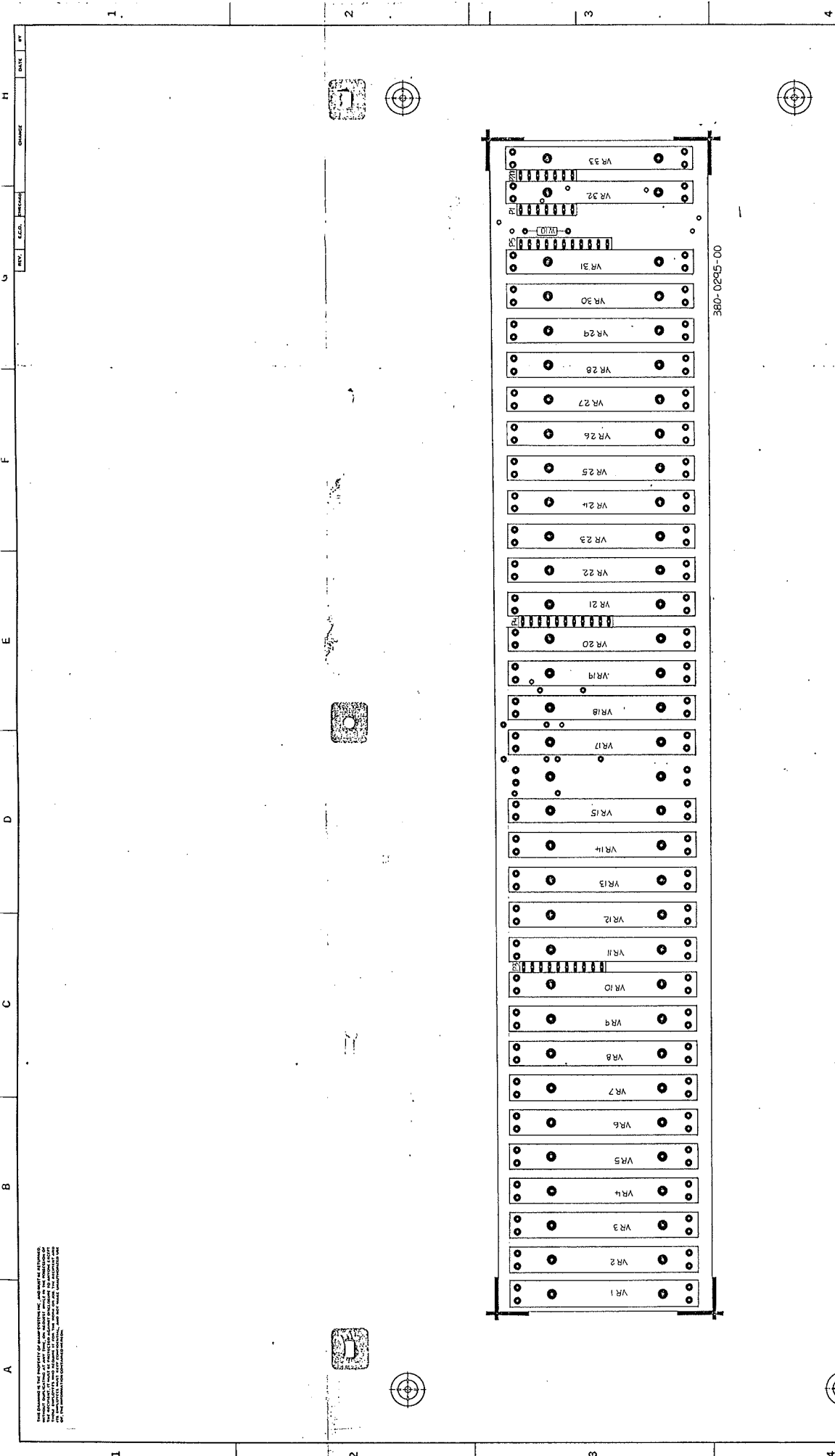
00-0820-08E

NOTES: UNLESS OTHERWISE SPECIFIED.

- 3. ALL CAPACITORS IN MFD, ALL RESISTORS IN OHMS UNLESS NOTED.
- 4. FOR 120V OPERATION, USE W6 & W8 AND DMT W10.
- 5. FOR 240V OPERATION, USE W10 AND DMT W6 & W8.
- 6. RESISTORS MARKED "A" ARE 3-3K.

biamp		BIAMP SYSTEMS, INC. 1000 N.W. 107th AVE. PORTLAND, OR 97229	
ADVANTAGE EQ 152		MAIN PCB ASSY	
D		701-0281-00	
REV. 2/5-85		SHEET 1 OF 1	

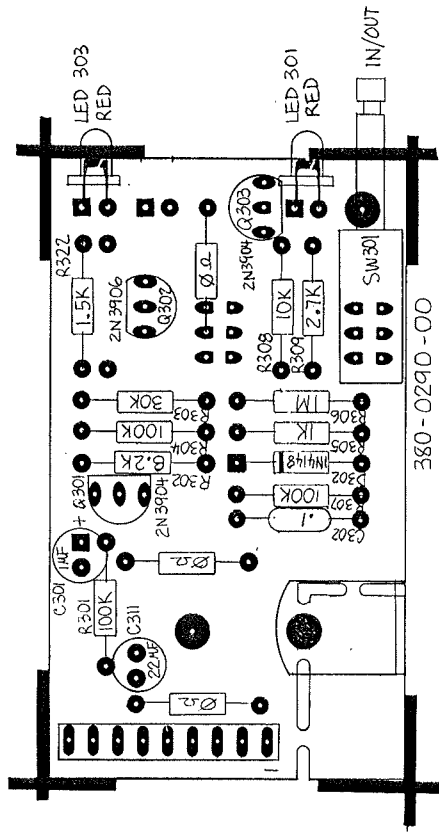
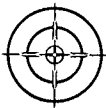
NO.	DESCRIPTION	QTY	UNIT PRICE	TOTAL PRICE
1	PCB	1		
2	RESISTORS	100		
3	CAPACITORS	100		
4	IC'S	10		
5	TRANSFORMER	1		
6	FUSE	1		
7	SWITCH	1		
8	WIRE	100		
9	TEST POINTS	10		
10	OTHER	10		
TOTAL				



BIAMP SYSTEMS, INC. 1000 SW 10TH AVENUE, SUITE 200 PORTLAND, OREGON 97204 TEL: 503/241-1111 FAX: 503/241-1112		biamp
PROJECT NO. 701-0295-00 DRAWING NO. 701-0295-00 SHEET 1 OF 1	DATE 10/10/90 DRAWN BY ZK CHECKED BY ZK SCALE 1:1	TITLE COMPONENT LAYOUT ADV EQ 152 FADER PCB ASSY
APPROVED BY DATE	MATERIAL FINISH	APPLICATION NEXT STEP

THIS DRAWING IS THE PROPERTY OF BIAMP SYSTEMS, INC. AND IS NOT TO BE REPRODUCED OR TRANSMITTED IN ANY FORM OR BY ANY MEANS, ELECTRONIC OR MECHANICAL, INCLUDING PHOTOCOPYING, RECORDING, OR BY ANY INFORMATION STORAGE AND RETRIEVAL SYSTEM. THE INFORMATION CONTAINED HEREIN IS UNCLASSIFIED EXCEPT WHERE SHOWN OTHERWISE.

THIS DRAWING IS THE PROPERTY OF BIAMP SYSTEMS AND MUST BE RETURNED WITHOUT DUPLICATING AT ANY TIME. ON REQUEST, WHILE IN THE POSSESSION OF THE RECIPIENT, IT MUST BE PROTECTED AGAINST DISCLOSURE TO ANYONE EXCEPT THOSE EMPLOYEES WHO REQUIRE IT FOR THE WORK OR JOB. THE RECIPIENT AND ITS EMPLOYEES MUST KEEP CONFIDENTIAL AND NOT MAKE UNAUTHORIZED USE OF THE INFORMATION CONTAINED HEREON.



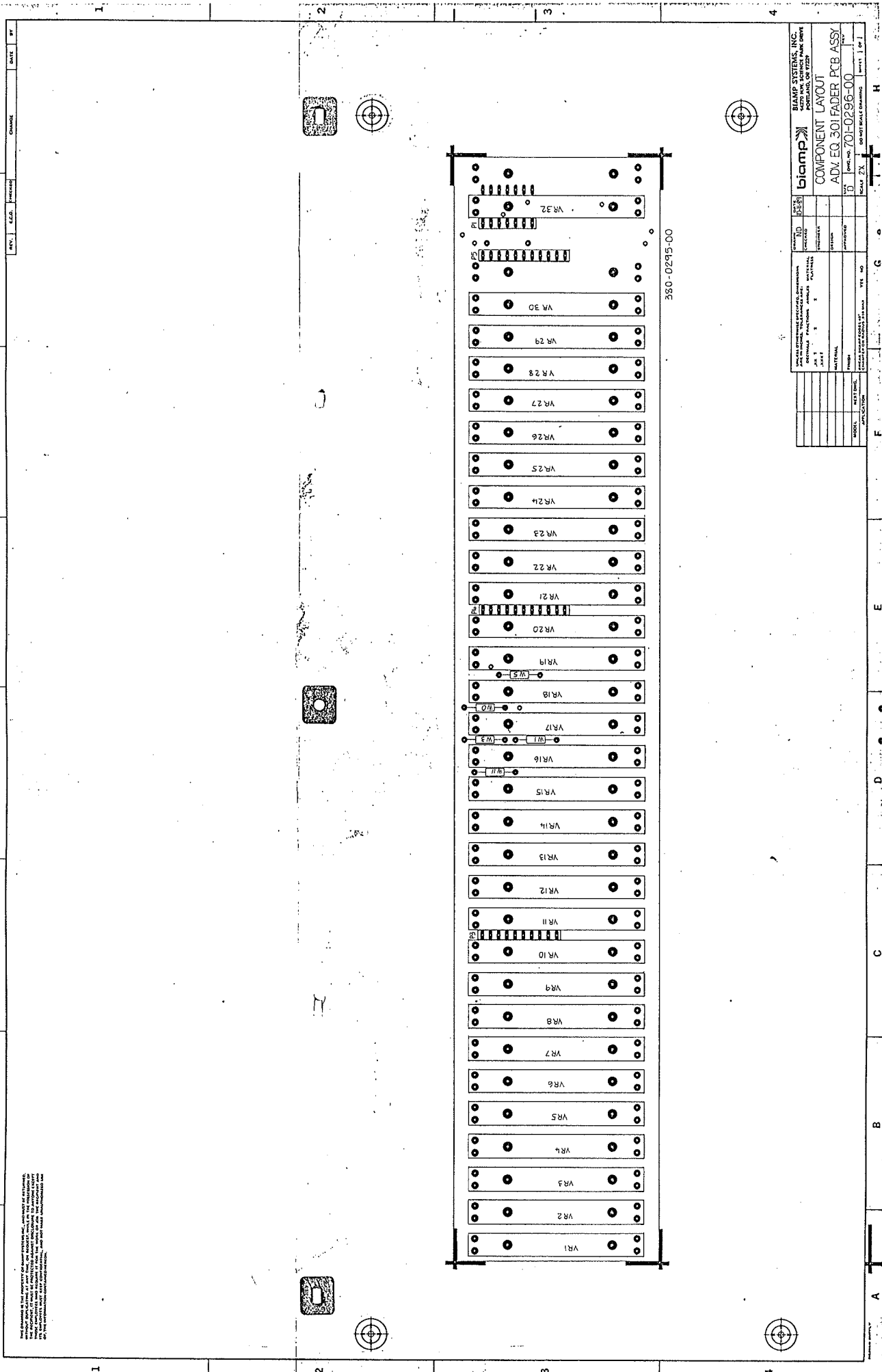
REV.	E.C.O.	CHANGE	DATE	BY
A	NONE	380-0290-00 REV. A FILM	12-15-88	ND
B	263-89	380-0290-00 REV. B FILM	12-19-88	ND

ITEM	PART NO	DESCRIPTION	SIZE	QTY
biamp BIAMP SYSTEMS COMPONENT LAYOUT ADVANTAGE EQ 152 AUX PCB ASSY				
DATE		REV. B		
DRAWN		DWG NO 701-0292-00		
CHECKED		SCALE ZX DO NOT SCALE DRAWING SHEET 1 OF 1		
ENGINEER		REV. B		
DESIGN		REV. B		
APPROVED		REV. B		

UNLESS OTHERWISE SPECIFIED DIMENSIONS ARE IN INCHES TOLERANCES ARE AS SHOWN FRACTIONS ANGLES MATERIAL FINISH

UNLESS OTHERWISE SPECIFIED DIMENSIONS ARE IN INCHES TOLERANCES ARE AS SHOWN FRACTIONS ANGLES MATERIAL FINISH

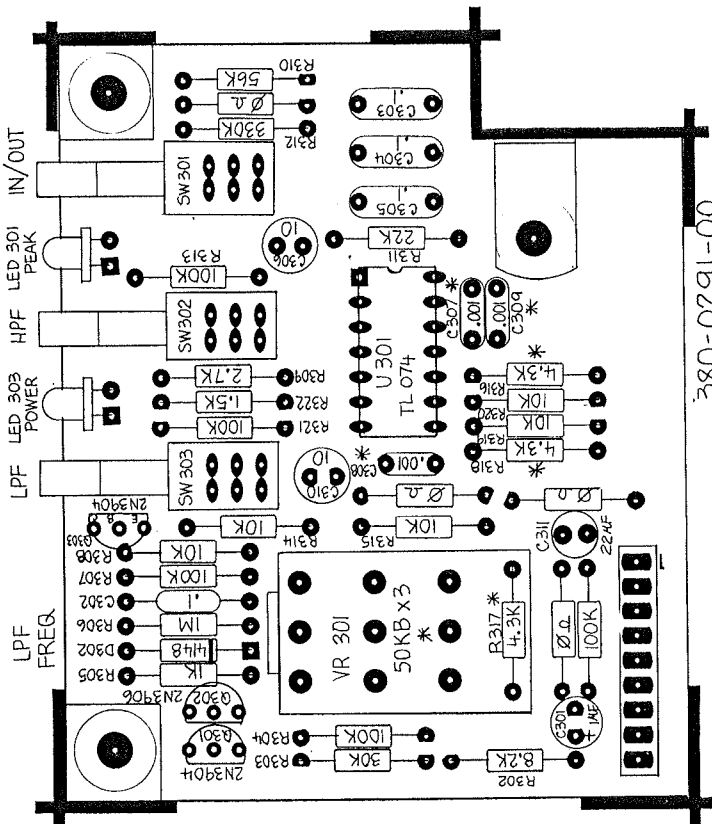
UNLESS OTHERWISE SPECIFIED DIMENSIONS ARE IN INCHES TOLERANCES ARE AS SHOWN FRACTIONS ANGLES MATERIAL FINISH



THIS DRAWING IS THE PROPERTY OF BIAMP SYSTEMS, INC. AND IS TO BE USED ONLY FOR THE PROJECT AND QUANTITY SPECIFIED. IT IS TO BE RETURNED TO BIAMP SYSTEMS, INC. UPON COMPLETION OF THE PROJECT. ANY REPRODUCTION OR USE OF THIS DRAWING WITHOUT THE WRITTEN PERMISSION OF BIAMP SYSTEMS, INC. IS STRICTLY PROHIBITED.

biamp		BIAMP SYSTEMS, INC. 5250 SW 12TH PLACE, SUITE 300 PORTLAND, OR 97229	
DATE	3/15/15	CHECKED	
REV.	A, B, C	DESIGNED	
ADV EQ 301 FADER PCB ASSY		DATE	3/15/15
COMPONENT LAYOUT		APP'D	
701-0295-00		REV. NO.	00
SCALE: 2X		DESIGNER	
DRAWN		DATE	3/15/15
PART NUMBER		REV. NO.	00
MODEL		REV. NO.	00
PART NUMBER		REV. NO.	00

THIS DRAWING IS THE PROPERTY OF BIAMP SYSTEMS, AND MUST BE RETURNED WITHOUT DUPLICATING AT ANY TIME, ON REQUEST. NO PART OF THIS DRAWING IS TO BE REPRODUCED OR TRANSMITTED IN ANY FORM OR BY ANY MEANS, ELECTRONIC OR MECHANICAL, INCLUDING PHOTOCOPYING, RECORDING, OR BY ANY INFORMATION STORAGE AND RETRIEVAL SYSTEM. THE RECIPIENT AND ITS EMPLOYEES MUST KEEP CONFIDENTIAL, AND NOT MAKE UNAUTHORIZED USE OF THE INFORMATION CONTAINED HEREON.

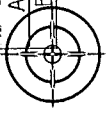


380-0291-00
REV.B

NOTES:

- ON SOME MODELS R316, R317, R318 : 2K
- C307, C308, C309 : .0022 MF
- VR 301 : 20KB X 3.

REV	FCU	CHARGE	DATE	BY
A	NONE	380-0291-00 REV.A FILM	12-18-88	ND
B	263-89	380-0291-00 REV.B FILM	12-19-89	ND



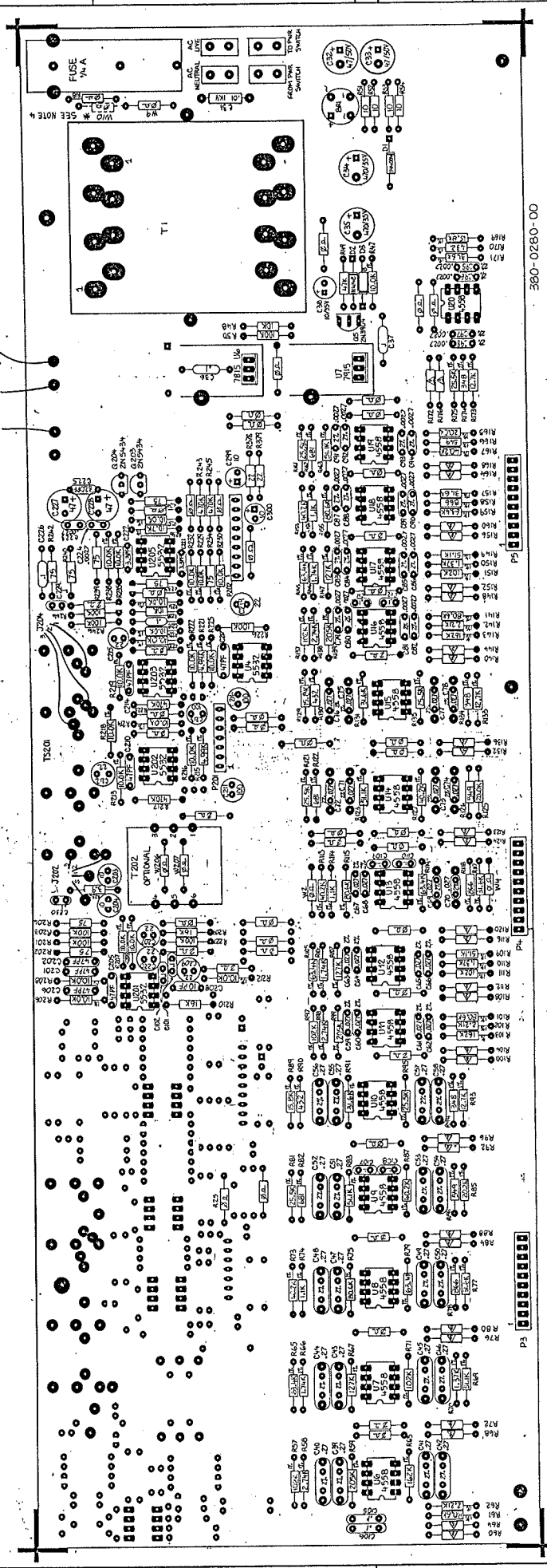
DATE	9-15-89	PART NO	ND	DESCRIPTION	QTY
DESIGN		ENG		BIAMP SYSTEMS	
DESIGN		APP		COMPONENT LAYOUT	
DESIGN		APP		ADVANTAGE EQ 301 AUX PCB ASSY	
DESIGN		APP		701-0291-00	1 B
DESIGN		APP		SCALE 2X	DO NOT SCALE DRAWING
DESIGN		APP		SHEET 2X	SHEET 1 OF 1

D

C

B

A



360-0280-00

NOTES: UNLESS OTHERWISE SPECIFIED.

- 1. ALL CAPACITORS IN μ F. ALL RESISTORS IN OHMS UNLESS NOTED
- 2. FOR 120 VAC OPERATION, USE W8 & W9 AND OMIT W10
- 3. FOR 240 VAC OPERATION, USE W10 AND OMIT W8 & W9
- 4. RESISTORS MARKED Δ ARE 3.3K

biamp		BIAMP SYSTEMS, INC. 1620 HAWK CIRCLE PORTLAND, OR 97201	
ND	REV	DATE	BY
ADVANTAGE EQ 301		MAIN PCB ASSY	
PART NO. 360-0280-00		REV. 1 OF 1	
DESIGNED BY	APPROVED BY	DATE	BY
TESTED BY	DATE	BY	
ISSUED BY	DATE	BY	