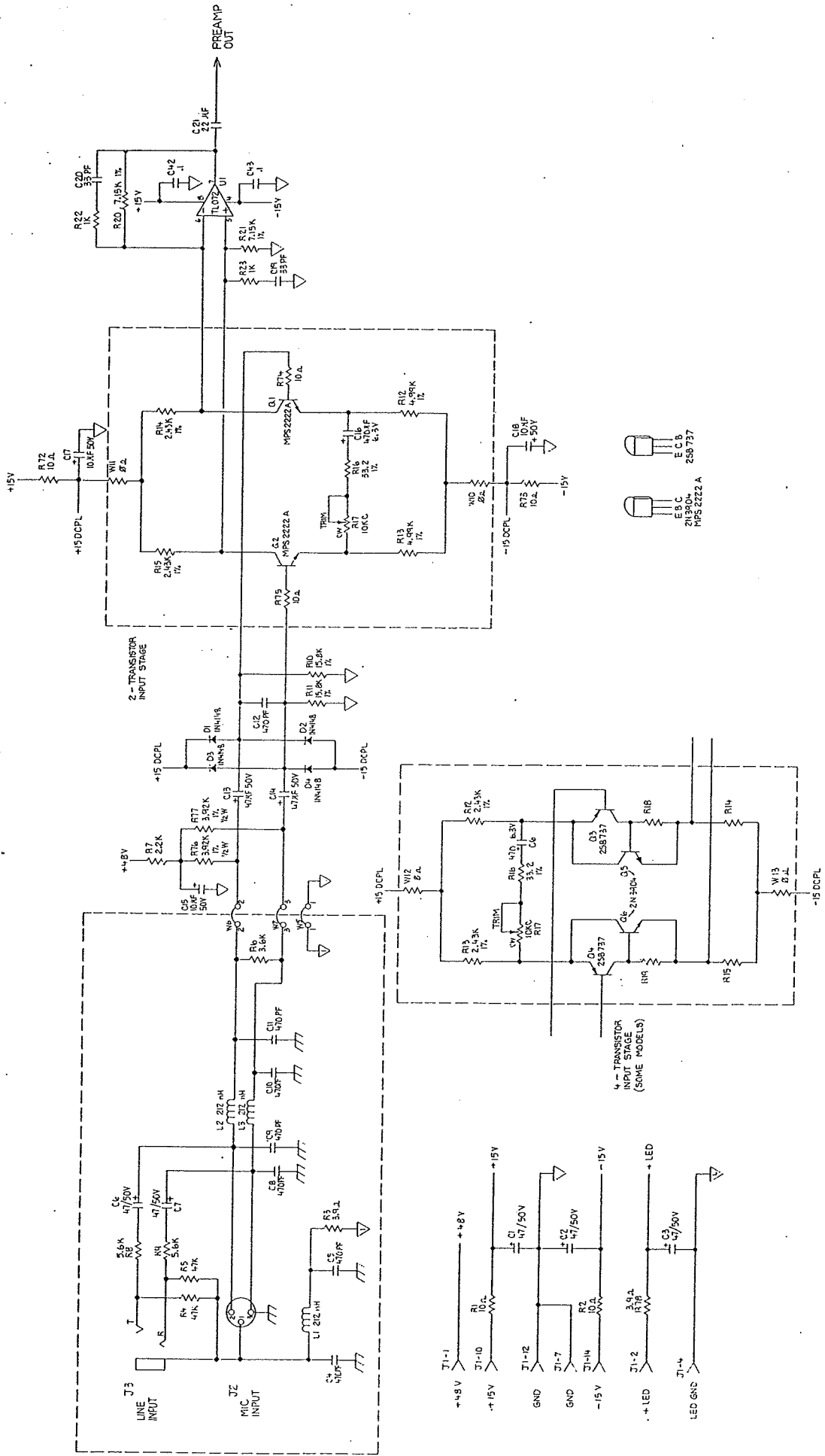


# **Rackmax II Schematic**

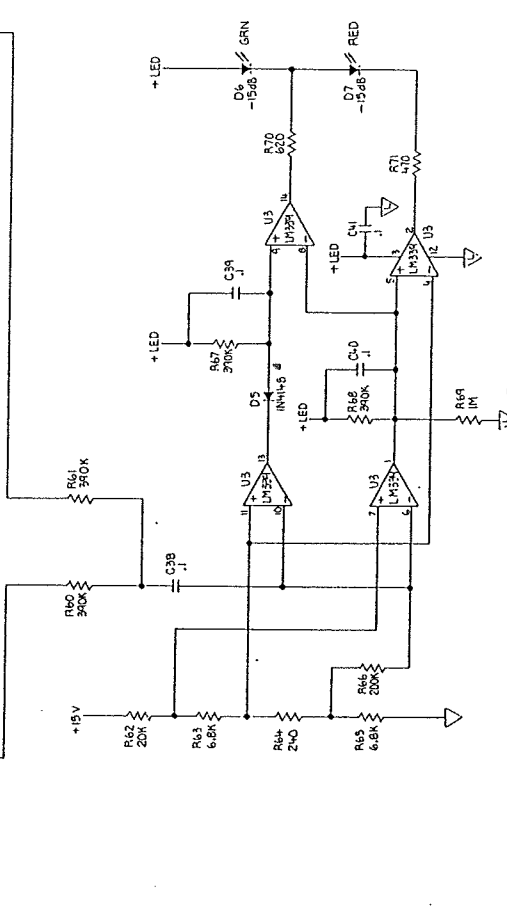
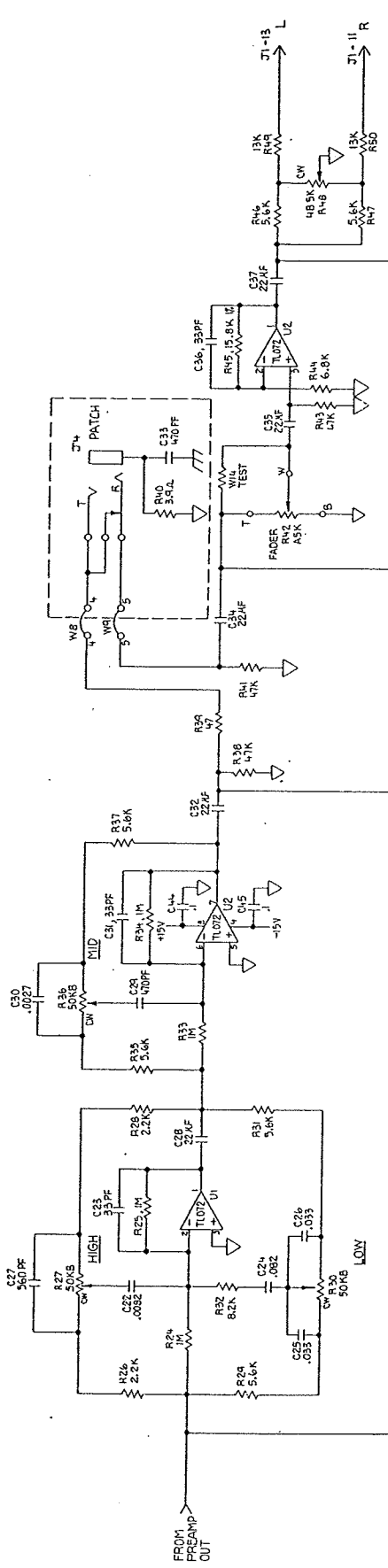
**B I A M P<sup>®</sup>**  
S Y S T E M S

10074 SW Arctic Drive      Beaverton, OR 97005      503-641-7287



DATE	REV	BY	CHKD	APP'D
biamp BIAMP SYSTEMS, INC. 4400 BAY AVENUE, SUITE 200 PORTLAND, OR 97207				
SCHEMATIC RACKMAX II INPUT REV. 000-0230-00				
NO.	REV.	DATE	BY	CHKD
15				
SHEET 1 OF 2				

A B C D E F G H



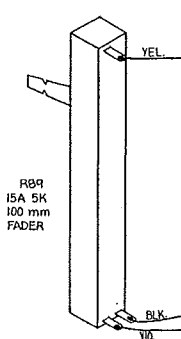
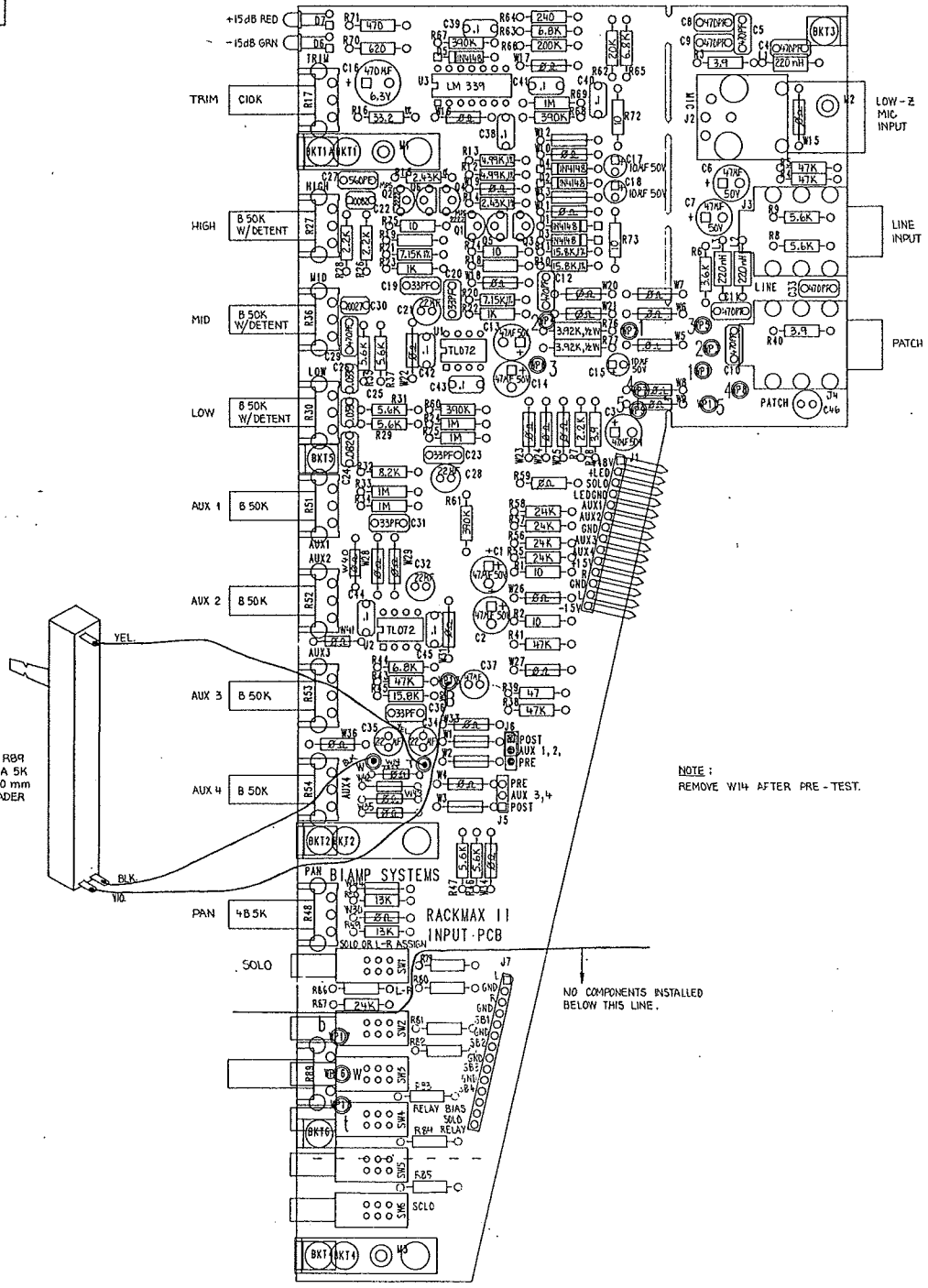
LAST

- R 90
- C 15
- L 3
- D 8
- D 7
- C 7
- U 3
- SW 6
- W 36

biamp		BIAMP SYSTEMS, INC.	
DESIGNED BY		PHOTOGRAPHIC COPY	
CHECKED BY		RACKMAX II INPUT	
DRAWN BY		FORM NO. 700-0230-00	
DATE		REV. 1	
COMPONENTS		EQUIVALENTS	
MATERIALS		YES	
FINISH		YES	
NET WT.		YES	
APPLICATION		YES	
MO. NO.		700-0230-00	
PART NO.		BIAMP SYSTEMS, INC.	
REV. NO.		REV. 1	

REV.	ECO.	DESCRIPTION	DATE	BY
A	013	CHS D.R.7 FROM L.W.G. TO Z.A.S.	4-28-81	ND
B	1026	41 380-0230-01 REV. C FILM		ND
C	1045	41 380 D. SERVO. TO 1-2-1981. 3.4. PSE	6/2/81	

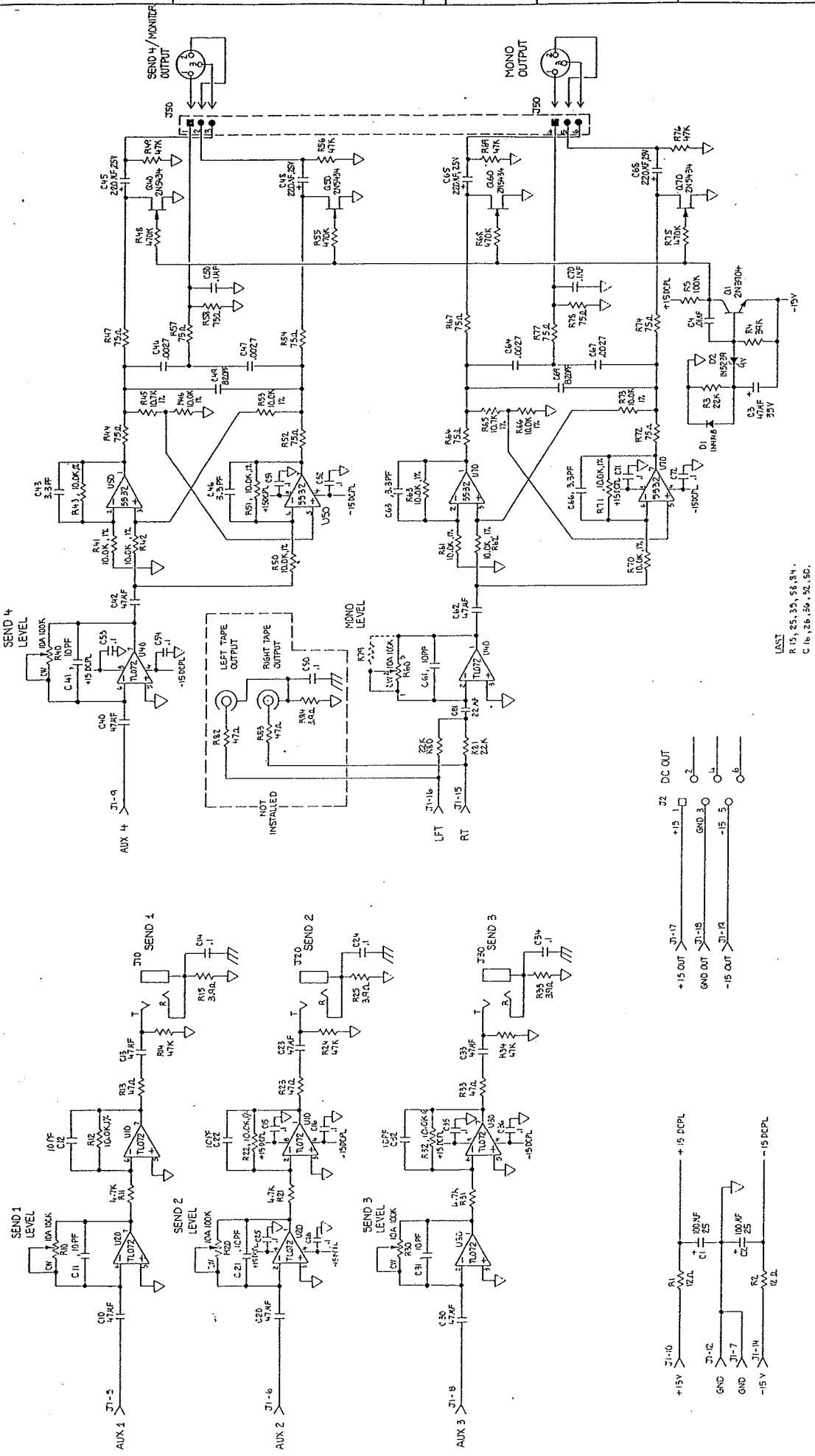
BIAMP SYSTEMS  
RACKMAX II INPUT PCB  
380-0230-01  
REV C



BIAMP SYSTEMS, INC.	DATE	BY
380-0230-01	REV. C	ND
COMPONENT LAYOUT		
NO. OF SHEETS	2	
SHEET NO.	1	
DATE	7/01-02/90-00	
SCALE	2X	
DO NOT SCALE DRAWING		

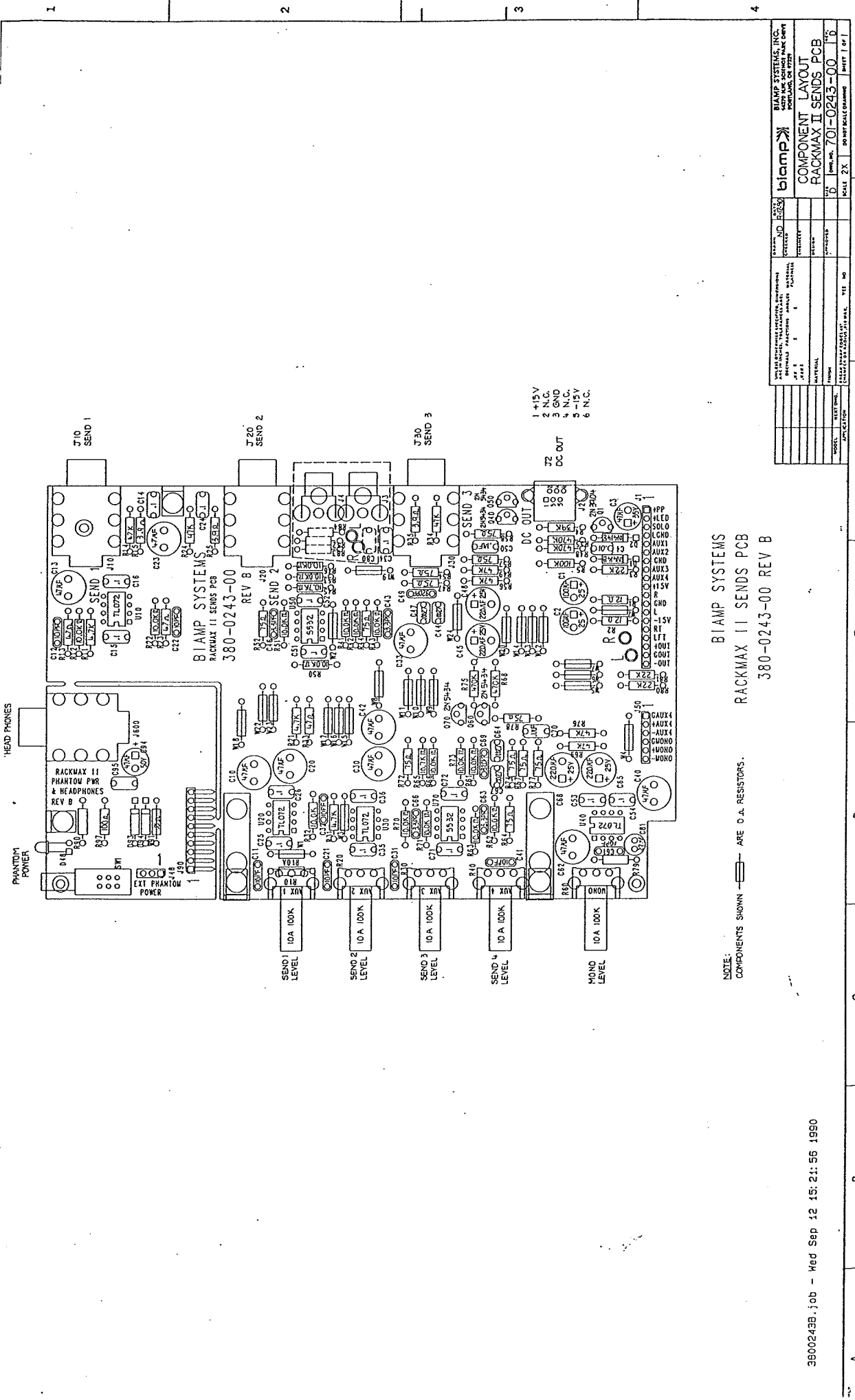
3800230A.job - Tue Sep 04 14:32:12 1990

A B C D E F G H



LAST  
R 15, 25, 35, 55, 84,  
C 16, 26, 36, 56, 86,  
U 20, 20, 30, 50, 70,  
Q.

biamp	
SHEMATIC	
RACKMAX II SENDS PCB	
REV	DATE
1	700 0243 00
2	
3	
4	
5	
6	
7	
8	
9	
10	
11	
12	
13	
14	
15	
16	
17	
18	
19	
20	
21	
22	
23	
24	
25	
26	
27	
28	
29	
30	
31	
32	
33	
34	
35	
36	
37	
38	
39	
40	
41	
42	
43	
44	
45	
46	
47	
48	
49	
50	
51	
52	
53	
54	
55	
56	
57	
58	
59	
60	
61	
62	
63	
64	
65	
66	
67	
68	
69	
70	
71	
72	
73	
74	
75	
76	
77	
78	
79	
80	
81	
82	
83	
84	
85	
86	
87	
88	
89	
90	
91	
92	
93	
94	
95	
96	
97	
98	
99	
100	



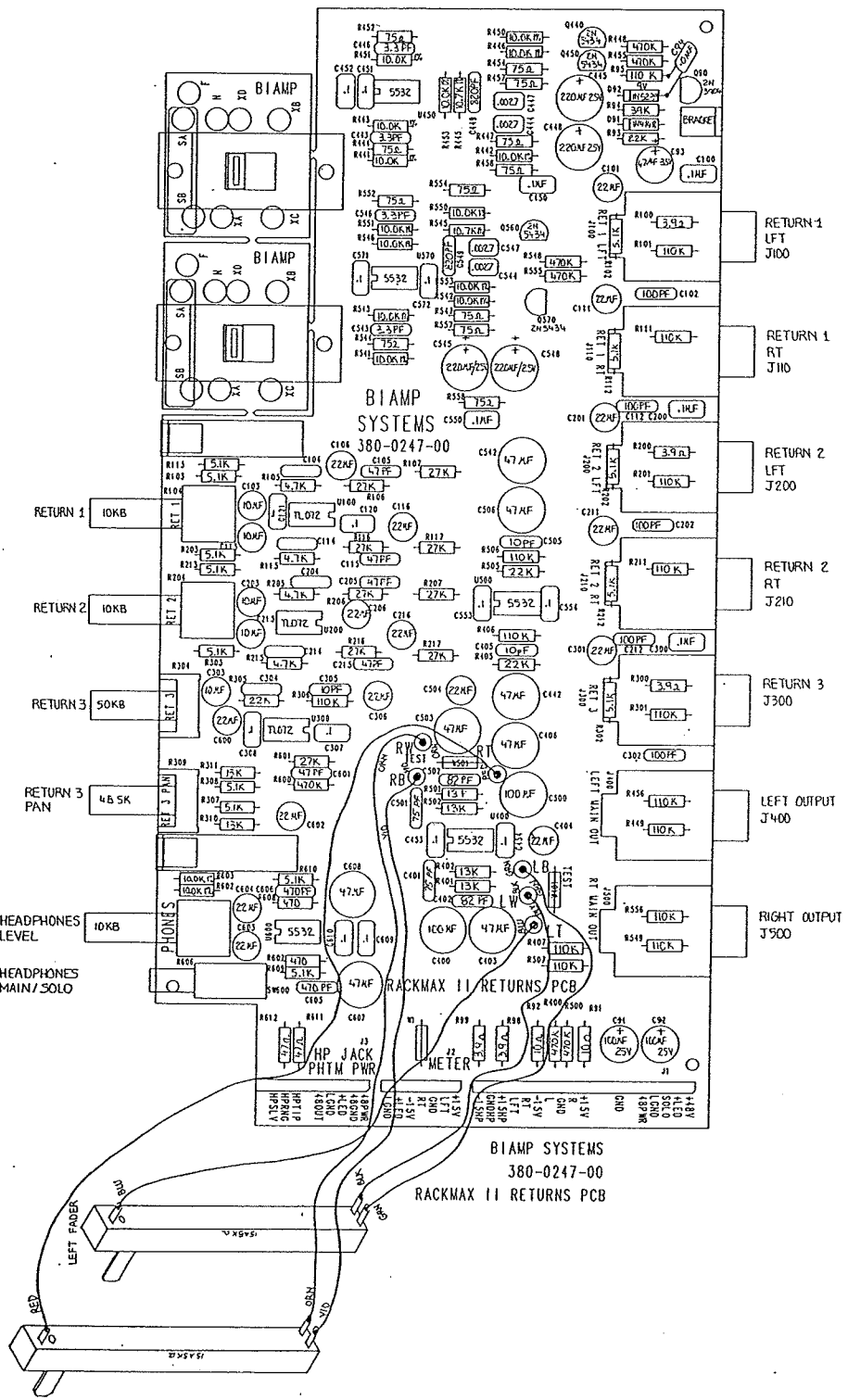
BIAMP SYSTEMS  
 RACKMAX II SENDS PCB  
 380-0243-00 REV B

NOTE:  
 COMPONENTS SHOWN ARE 0.1% RESISTORS.

DATE	REV.	BY	CHKD.	APPV.
DESCRIPTION	ISSUED FOR	DATE	BY	APPV.
REVISION	REVISION			
1	1			
2				
3				
4				
5				
6				
7				
8				
9				
10				
11				
12				
13				
14				
15				
16				
17				
18				
19				
20				
21				
22				
23				
24				
25				
26				
27				
28				
29				
30				
31				
32				
33				
34				
35				
36				
37				
38				
39				
40				
41				
42				
43				
44				
45				
46				
47				
48				
49				
50				
51				
52				
53				
54				
55				
56				
57				
58				
59				
60				
61				
62				
63				
64				
65				
66				
67				
68				
69				
70				
71				
72				
73				
74				
75				
76				
77				
78				
79				
80				
81				
82				
83				
84				
85				
86				
87				
88				
89				
90				
91				
92				
93				
94				
95				
96				
97				
98				
99				
100				
101				
102				
103				
104				
105				
106				
107				
108				
109				
110				
111				
112				
113				
114				
115				
116				
117				
118				
119				
120				
121				
122				
123				
124				
125				
126				
127				
128				
129				
130				
131				
132				
133				
134				
135				
136				
137				
138				
139				
140				
141				
142				
143				
144				
145				
146				
147				
148				
149				
150				



RIGHT FADER (WHEN LOCKING FRONT OF UNIT)



BIAMP SYSTEMS  
380-0247-00  
RACKMAX II RETURNS PCB

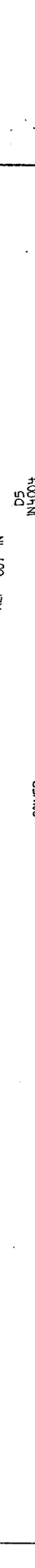
BIAMP SYSTEMS, INC.	4000 PARK DRIVE PARK DRIVE
COMPONENT LAYOUT	
RACKMAX II RETURNS PCB	
DATE: 7/01/02	REV: 00
MAX: 2X	DRY: 100C

DATE: 7/01/02	REV: 00	MAX: 2X	DRY: 100C
DATE: 7/01/02	REV: 00	MAX: 2X	DRY: 100C
DATE: 7/01/02	REV: 00	MAX: 2X	DRY: 100C
DATE: 7/01/02	REV: 00	MAX: 2X	DRY: 100C
DATE: 7/01/02	REV: 00	MAX: 2X	DRY: 100C

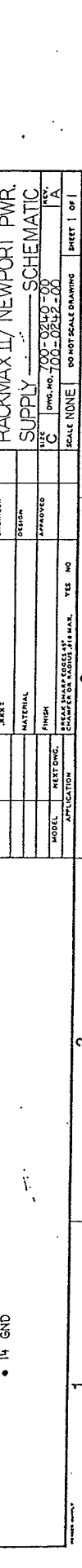
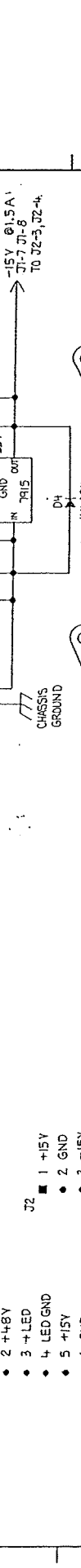
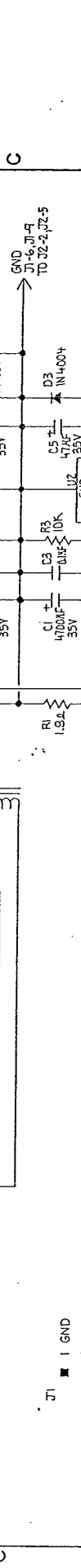
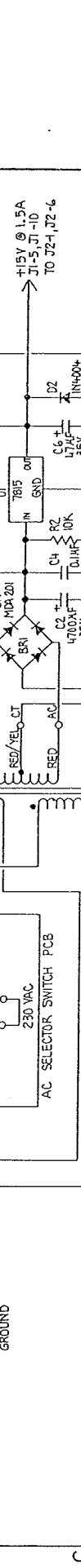
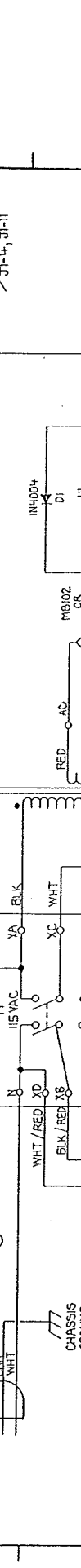
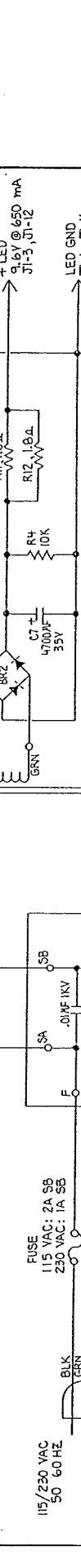
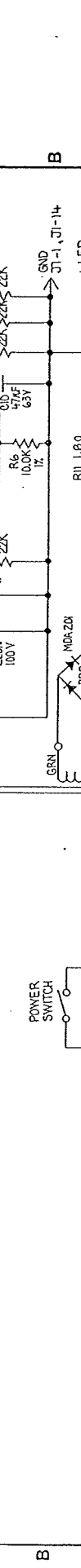
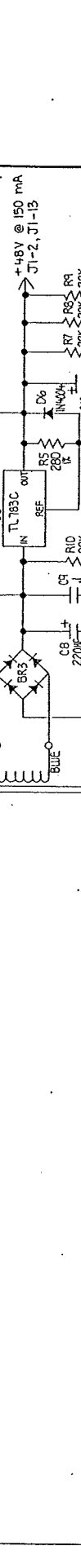


A B C D

115/230 VAC 50 60 HZ  
 FUSE  
 115 VAC: 2A S6  
 230 VAC: 1A S6  
 CHASSIS GROUND  
 WHT  
 BLK  
 GRN  
 115 VAC  
 230 VAC  
 POWER SWITCH  
 SA  
 SB  
 0.1MF 1KV  
 AC SELECTOR SWITCH PCB  
 WHT/RED XD  
 BLK/REF XB  
 WHT/RED XA  
 BLK  
 WHT  
 POWER TRANSFORMER  
 BLUE  
 BLUE  
 WOHM  
 TL783C  
 REF OUT IN  
 D5 IN4004  
 U3  
 IN  
 REF  
 OUT  
 R5 20K  
 R6 100K  
 R7 22K  
 R8 22K  
 R9 22K  
 D6 IN4004  
 GND  
 J1-2, J1-13  
 +48V @ 150 mA  
 +LED  
 2.15V @ 650 mA  
 J1-5, J1-12  
 LED GND  
 J1-4, J1-11  
 GRN  
 GRN  
 GRN  
 R11 1.8Ω  
 R12 1.8Ω  
 R4 10K  
 R1 1.8Ω  
 CHASSIS GROUND  
 RED  
 RED/YEL CT  
 RED  
 IN4004  
 D1  
 UI  
 7815 OUT  
 IN GND  
 IN  
 C6 ± 47µF 35V  
 C2 ± 4700µF 35V  
 C4 0.1µF  
 R2 10K  
 C3 0.1µF  
 R3 10K  
 C1 ± 4700µF 35V  
 C5 ± 47µF 35V  
 U7 7915  
 GND OUT  
 IN  
 D4 IN4004  
 TO J2-1, J2-6  
 +15V @ 1.5A  
 J1-5, J1-10  
 TO J2-2, J2-5  
 GND  
 J1-6, J1-9  
 TO J2-3, J2-4  
 -15V @ 1.5A  
 J1-7, J1-8  
 TO J2-3, J2-4



- J1
- 1 GND
  - 2 +48V
  - 3 +LED
  - 4 LED GND
  - 5 +15V
  - 6 GND
  - 7 -15V
  - 8 -15V
  - 9 GND
  - 10 +15V
  - 11 LED GND
  - 12 +LED
  - 13 +48V
  - 14 GND
- J2
- 1 +15V
  - 2 GND
  - 3 -15V
  - 4 -15V
  - 5 GND
  - 6 +15V



biamp BIAMP SYSTEMS  
 RACKMAX II / NEWPORT PWR.  
 SUPPLY SCHEMATIC

DATE: 11/25/88  
 DRAWN: ND  
 CHECKED: ND  
 ENGINEER: ND  
 DESIGN: ND  
 APPROVED: ND  
 FINISH: ND  
 MODEL: ND  
 PART NO.: ND  
 ITEM: ND  
 DESCRIPTION: ND  
 SIZE: ND  
 QTY: ND

UNLESS OTHERWISE SPECIFIED, DIMENSIONS ARE IN INCHES, TOLERANCES ARE AS SHOWN  
 DIMENSIONS IN PARENTHESES ARE FOR REFERENCE ONLY  
 DIMENSIONS IN BRACKETS ARE FOR REFERENCE ONLY  
 DIMENSIONS IN DASHES ARE FOR REFERENCE ONLY

MATERIAL: ND  
 FINISH: ND  
 MODEL: ND  
 PART NO.: ND  
 ITEM: ND  
 DESCRIPTION: ND  
 SIZE: ND  
 QTY: ND

SCALE: NONE  
 DO NOT SCALE DRAWING

SHEET 1 OF 1

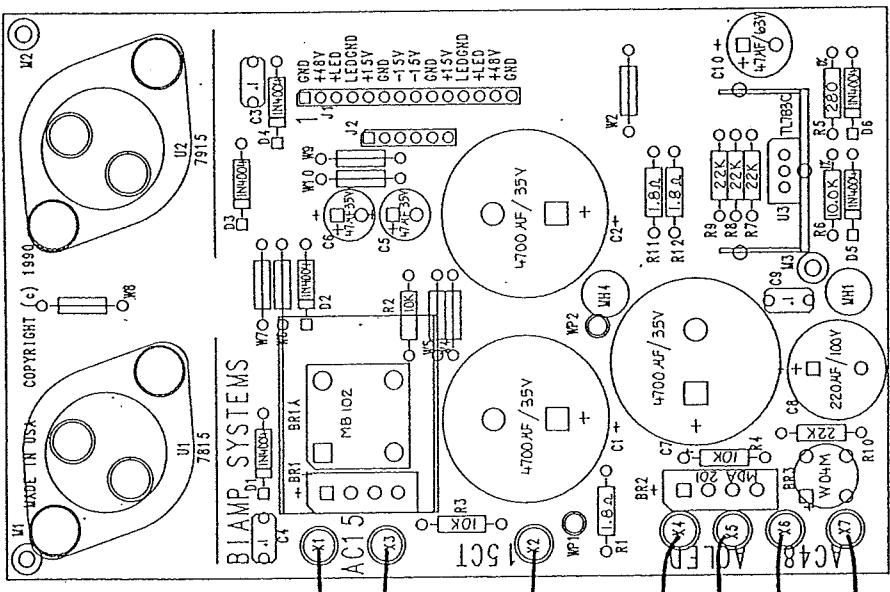
4

3

2

1

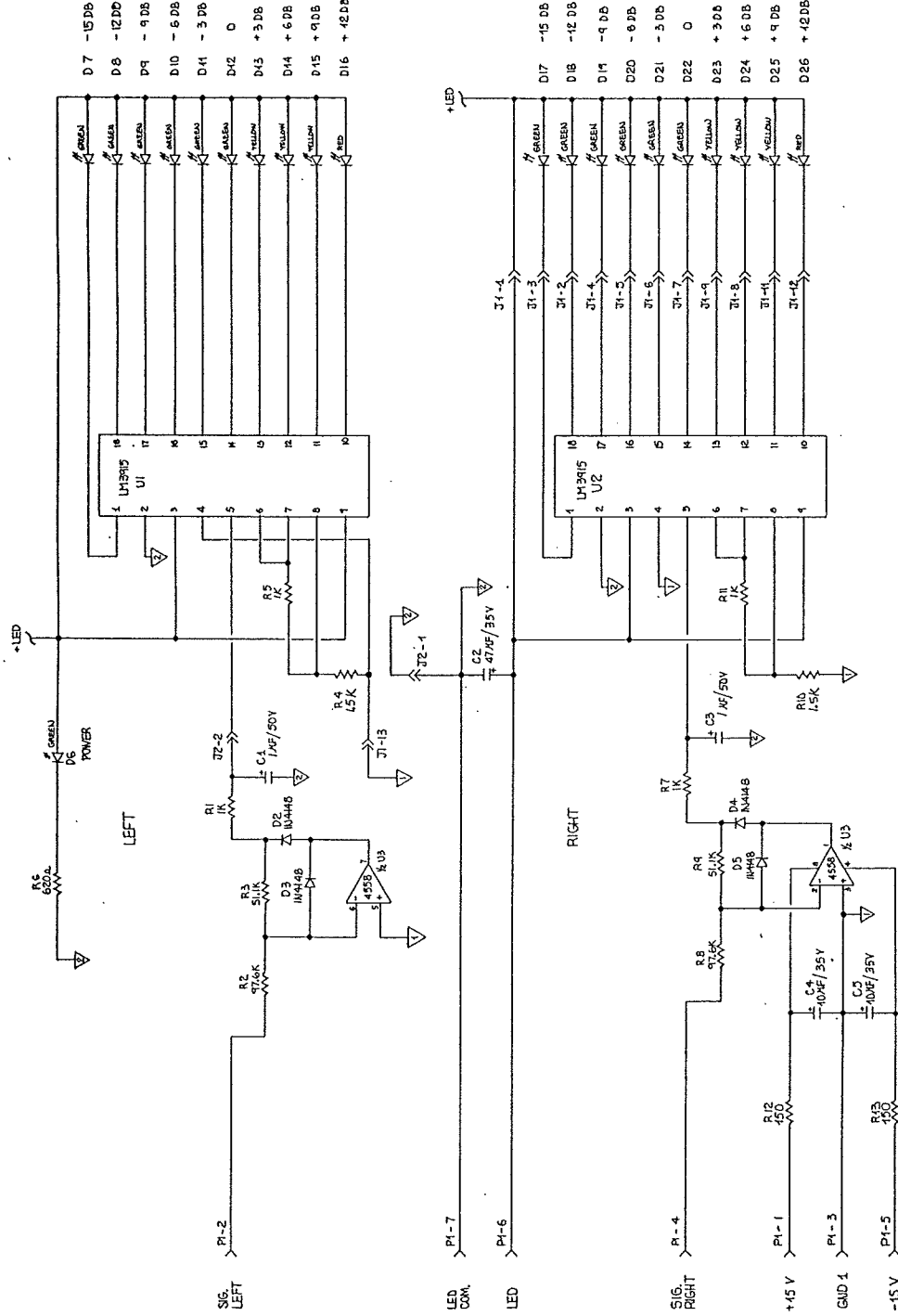
IT'S ESSENTIAL NOT REPT COMPONENTS AND NOT MAKE UNAUTHORIZED USE OF THE PATENTED COMPONENTS.



BIAMP SYSTEMS  
RACKMAX II POWER SUPPLY

NOTES : COMPONENTS SHOWN ARE 1/4 WATT RESISTOR.

ITEM	DESCRIPTION	SIZE	QTY.
380	380-0240-00		
	BIAMP SYSTEMS		
	RACKMAX II/NEWPORT PWR.		
	SUPPLY—COMPONENT LAYOUT		
	FILE C	DWG NO. 701-0240-00	REV. A
	SCALE 2X	DO NOT SCALE DRAWING	SHEET 1 OF 1



REV	DATE	BY	CHKD	APP'D	DESCRIPTION
1	1/24/81	...	...	...	...
2	2/28/81	...	...	...	...

DATE	BY	CHKD	APP'D	DESCRIPTION
...	...	...	...	...

DATE	BY	CHKD	APP'D	DESCRIPTION
...	...	...	...	...

DATE	BY	CHKD	APP'D	DESCRIPTION
...	...	...	...	...

DATE	BY	CHKD	APP'D	DESCRIPTION
...	...	...	...	...

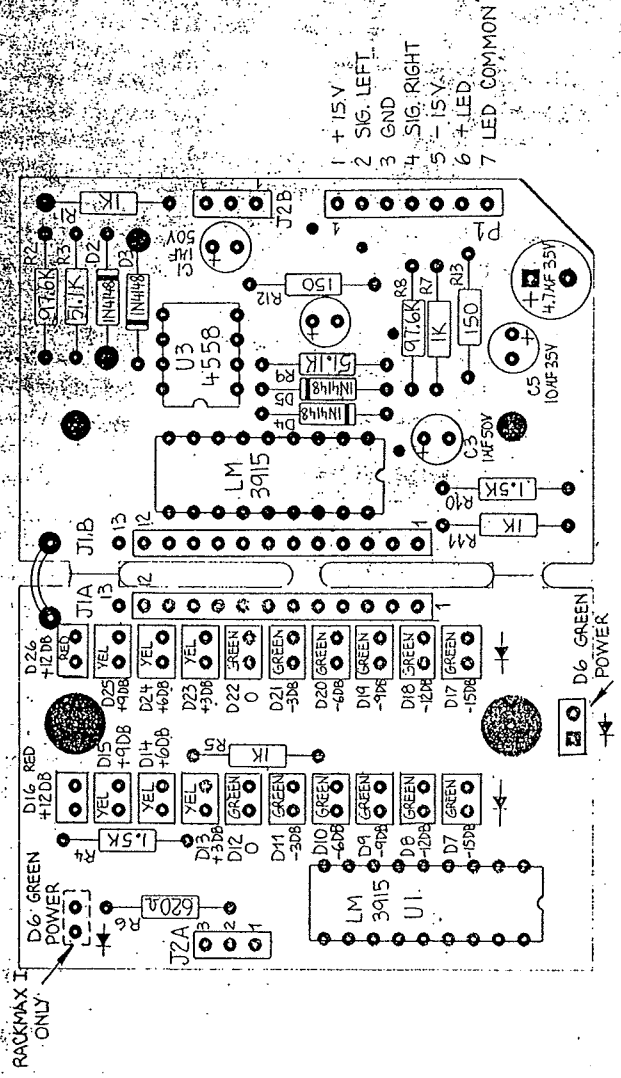
DATE	BY	CHKD	APP'D	DESCRIPTION
...	...	...	...	...

DATE	BY	CHKD	APP'D	DESCRIPTION
...	...	...	...	...

DATE	BY	CHKD	APP'D	DESCRIPTION
...	...	...	...	...

1

1. This drawing is the property of BIAMP SYSTEMS, INC. and shall remain the property of BIAMP SYSTEMS, INC. without duplication, in whole or in part, for any purpose whatsoever. ANY REPRODUCTION OF THIS DRAWING WITHOUT THE WRITTEN PERMISSION OF BIAMP SYSTEMS, INC. IS STRICTLY PROHIBITED. ANYONE BREAKING THESE CONDITIONS WILL BE RESPONSIBLE FOR THE WORK ON THIS RECEIPT, AND THE WORK WILL BE REJECTED. BIAMP SYSTEMS, INC. WILL NOT BE RESPONSIBLE FOR THE WORK ON THIS RECEIPT.



BIAMP BARGRAPH BOARD  
 RACKMAX  
 380-0186-00 REV D

ITEM	PART NO.	DESCRIPTION	SIZE	QTY.
	ND 1518	BIAMP SYSTEMS		
COMPONENT LAYOUT				
RACKMAX BARGRAPH BOARD				
	B	DWG. NO. 701-0186-00	REV. 6	
		SCALE 2X	DO NOT SCALE DRAWING	SHEET 1 OF 1

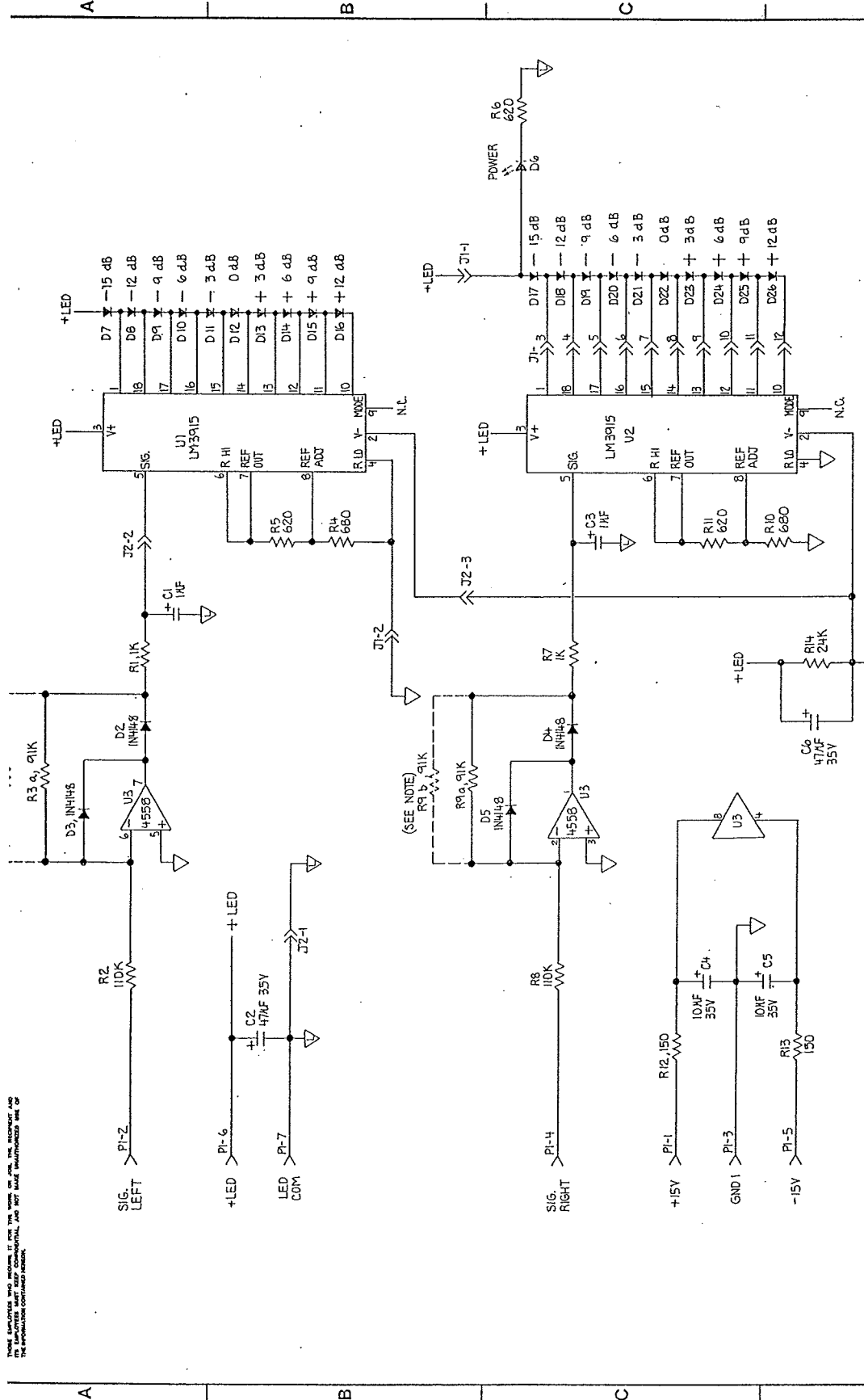
A

B

C

D

THIS DRAWING IS THE PROPERTY OF BIAMP SYSTEMS, INC. IT IS TO BE USED ONLY FOR THE PURPOSES SPECIFIED AND IS NOT TO BE REPRODUCED OR TRANSMITTED IN ANY FORM OR BY ANY MEANS, ELECTRONIC OR MECHANICAL, INCLUDING PHOTOCOPYING, RECORDING, OR BY ANY INFORMATION STORAGE AND RETRIEVAL SYSTEM. THE INFORMATION CONTAINED HEREIN IS UNCLASSIFIED.



PART NO.		DESCRIPTION		SIZE	QTY.
U1	LM3915	1	LM3915		
U2	LM3915	1	LM3915		
U3	4558	1	4558		
D1	1N5234A	1	1N5234A		
D2	1N4148	1	1N4148		
D3	1N4148	1	1N4148		
D4	1N4148	1	1N4148		
D5	1N4148	1	1N4148		
D6	1N4148	1	1N4148		
D7	1N4148	1	1N4148		
D8	1N4148	1	1N4148		
D9	1N4148	1	1N4148		
D10	1N4148	1	1N4148		
D11	1N4148	1	1N4148		
D12	1N4148	1	1N4148		
D13	1N4148	1	1N4148		
D14	1N4148	1	1N4148		
D15	1N4148	1	1N4148		
D16	1N4148	1	1N4148		
D17	1N4148	1	1N4148		
D18	1N4148	1	1N4148		
D19	1N4148	1	1N4148		
D20	1N4148	1	1N4148		
D21	1N4148	1	1N4148		
D22	1N4148	1	1N4148		
D23	1N4148	1	1N4148		
D24	1N4148	1	1N4148		
D25	1N4148	1	1N4148		
D26	1N4148	1	1N4148		
R1	620	1	620		
R2	10K	1	10K		
R3	91K	1	91K		
R4	680	1	680		
R5	620	1	620		
R6	620	1	620		
R7	1K	1	1K		
R8	10K	1	10K		
R9	91K	1	91K		
R10	680	1	680		
R11	620	1	620		
R12	150	1	150		
R13	150	1	150		
R14	24K	1	24K		
C1	10µF	1	10µF		
C2	47µF	1	47µF		
C3	10µF	1	10µF		
C4	10µF	1	10µF		
C5	10µF	1	10µF		
C6	47µF	1	47µF		

NOTE: REMOVE R3 b AND R9 b ON SOME MODELS.

ITEM	DESCRIPTION	DATE	QTY.
U1	LM3915	2/28/81	1
U2	LM3915	2/28/81	1
U3	4558	2/28/81	1
D1	1N5234A	2/28/81	1
D2	1N4148	2/28/81	1
D3	1N4148	2/28/81	1
D4	1N4148	2/28/81	1
D5	1N4148	2/28/81	1
D6	1N4148	2/28/81	1
D7	1N4148	2/28/81	1
D8	1N4148	2/28/81	1
D9	1N4148	2/28/81	1
D10	1N4148	2/28/81	1
D11	1N4148	2/28/81	1
D12	1N4148	2/28/81	1
D13	1N4148	2/28/81	1
D14	1N4148	2/28/81	1
D15	1N4148	2/28/81	1
D16	1N4148	2/28/81	1
D17	1N4148	2/28/81	1
D18	1N4148	2/28/81	1
D19	1N4148	2/28/81	1
D20	1N4148	2/28/81	1
D21	1N4148	2/28/81	1
D22	1N4148	2/28/81	1
D23	1N4148	2/28/81	1
D24	1N4148	2/28/81	1
D25	1N4148	2/28/81	1
D26	1N4148	2/28/81	1
R1	620	2/28/81	1
R2	10K	2/28/81	1
R3	91K	2/28/81	1
R4	680	2/28/81	1
R5	620	2/28/81	1
R6	620	2/28/81	1
R7	1K	2/28/81	1
R8	10K	2/28/81	1
R9	91K	2/28/81	1
R10	680	2/28/81	1
R11	620	2/28/81	1
R12	150	2/28/81	1
R13	150	2/28/81	1
R14	24K	2/28/81	1
C1	10µF	2/28/81	1
C2	47µF	2/28/81	1
C3	10µF	2/28/81	1
C4	10µF	2/28/81	1
C5	10µF	2/28/81	1
C6	47µF	2/28/81	1

BIAMP SYSTEMS  
DUAL METER PCB  
SCHEMATIC  
SIZE 6 DWG. NO. 700-0396-00  
SCALE NONE DO NOT SCALE DRAWING SHEET 1 OF 1