

BIC Models 911, 912, 912C, 914 and 914C

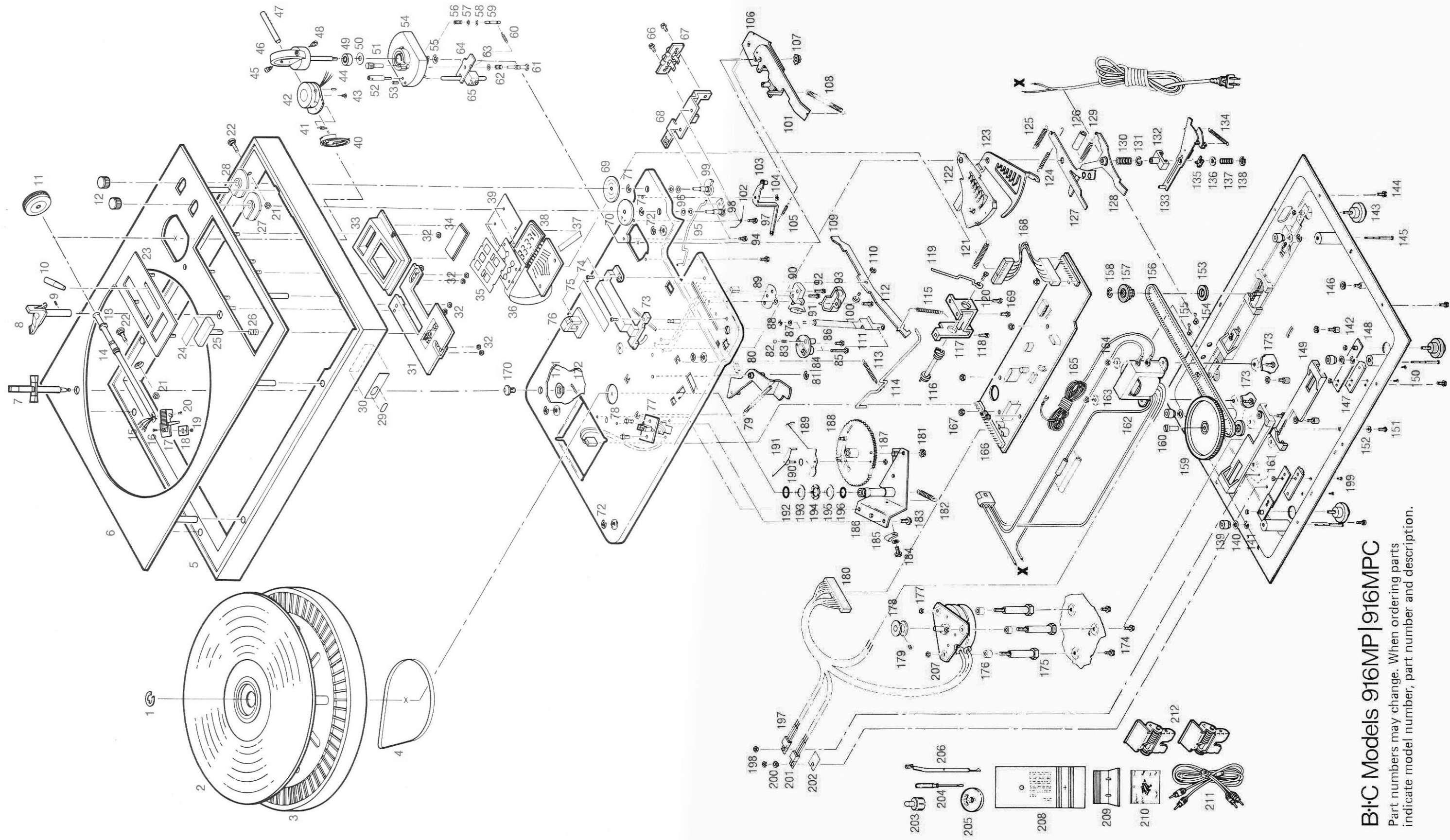
Part number may change. When ordering parts indicate model number, part number and description.

Official Parts List | B-i-C Models 911, 912, 912C, 914 and 914C

REF. NO.	911 PART NO.	912 PART NO.	912C PART NO.	914 PART NO.	914C PART NO.	DESCRIPTION
1	37-302-01	37-302-01	37-143-01	37-302-01	37-143-01	T/T "c" clip
2	---	---	37-267-01	---	37-267-01	T/T mat
3	10-366-02	10-366-02	38-180-01	10-366-02	38-180-01	Trim ring-ss (not shown)
4	37-130-01	37-130-01	10-366-01	37-130-01	10-366-01	Trim ring-ig (not shown)
5	---	---	37-130-01	---	37-130-01	T/T w/mat
6	10-319-01	10-319-01	20-060-01	10-319-01	20-060-01	Record support
7	20-060-01	20-060-01	20-060-01	20-060-01	20-060-01	Set screw
8	38-159-01	38-161-01	38-160-01	38-161-02	38-160-02	Control escutcheon insert
9	38-162-02	38-162-01	38-162-01	38-162-01	38-162-01	Trim-play key
10	10-393-02	10-393-01	10-393-01	10-393-01	10-393-01	Play key w/trim
11	10-370-01	10-370-01	10-370-01	10-382-01	10-382-01	Counterbalance wgt.
12	37-268-02	37-268-02	37-268-01	37-268-02	37-268-01	T/A slot cover
13	10-322-07	10-322-07	10-322-06	10-322-07	10-322-06	Top trim
14	37-251-01	37-251-01	37-251-01	37-251-01	37-251-01	Lens, anti-skate
15	10-368-01	10-368-01	10-368-01	---	---	Pivot pin—fixed
16	10-369-01	10-369-01	10-369-01	---	---	Gimbal
17	38-155-01	38-155-01	38-155-01	---	---	Trim-gimbal (not shown)
18	10-367-01	10-367-01	10-367-01	---	---	Pivot pin—floating
19	37-309-01	37-309-01	37-309-01	---	---	Plug—T/A tube
20	10-327-01	10-327-01	10-327-01	---	---	Pivot (2)
21	20-484-01	20-484-01	20-484-01	---	---	Screw (2)
22	37-254-01	37-254-01	37-254-01	---	---	Pivot block
23	36-037-01	36-037-01	36-037-01	---	---	Trim—pivot blk (not shown)
24	10-085-01	10-085-01	10-085-01	---	---	T/A complete (nos. 16-30)
25	20-268-01	20-268-01	20-268-01	---	---	Harness
26	10-372-02	10-372-02	10-372-02	---	---	Head shell Assy.
27	39-220-01	39-220-01	39-220-01	---	---	(nos. 26, 27, 29, 30)
28	23-256-01	23-256-01	23-256-01	---	---	Bkt. mfg. screw
29	20-063-01	20-063-01	20-063-01	---	---	Washer (not shown)
30	21-005-01	10-419-01	10-419-01	---	---	"c" clip (not shown)
31	22-007-01	22-007-01	22-007-01	---	---	Screw
32	37-250-01	37-250-01	37-250-01	---	---	Cart. mfg. Bkt. & nut Assy.
33	39-172-01	39-172-01	39-172-02	---	---	Hex nut
34	20-263-01	20-263-01	20-263-01	---	---	Washer
35	36-025-02	36-025-02	36-025-01	---	---	Cart. mfg. Bkt. & nut Assy.
36	36-025-01	36-025-01	36-025-01	---	---	Hex nut
37	23-525-01	23-525-01	23-525-01	---	---	Washer
38	40-035-01	40-035-01	40-035-01	---	---	Cart. mfg. Bkt. & nut Assy.
39	22-343-01	22-343-01	22-343-01	---	---	Hex nut
40	39-139-01	39-139-01	39-139-01	---	---	Washer
41	40-493-01	40-493-01	40-493-01	---	---	Cart. mfg. Bkt. & nut Assy.
42	10-062-02	10-062-02	10-062-02	---	---	Hex nut
43	38-563-01	38-563-01	38-563-01	---	---	Washer
44	22-003-01	22-003-01	22-003-01	---	---	Cart. mfg. Bkt. & nut Assy.
45	40-258-01	40-258-01	40-258-01	---	---	Hex nut
46	40-258-01	40-258-01	40-258-01	---	---	Washer
47	39-369-01	39-369-01	39-369-01	---	---	Cart. mfg. Bkt. & nut Assy.
48	40-035-01	40-035-01	40-035-01	---	---	Hex nut
49	37-294-02	37-294-02	37-294-02	---	---	Washer
50	21-282-01	21-282-01	21-282-01	---	---	Cart. mfg. Bkt. & nut Assy.
51	38-171-01	38-171-01	38-171-01	---	---	Hex nut

Official Parts List | B-i-C Models 911, 912, 912C, 914 and 914C (Continued)

REF. NO.	911 PART NO.	912 PART NO.	912C PART NO.	914 PART NO.	914C PART NO.	DESCRIPTION
110	---	41-015-01	41-015-01	41-015-01	41-015-01	Repeat rod
111	38-122-01	38-122-01	38-122-01	38-122-01	38-122-01	Spring—reject rod
112	20-268-02	20-268-02	20-268-02	20-268-02	20-268-02	Cue link
113	38-122-01	38-122-01	38-122-01	38-122-01	38-122-01	Screw—cue link
114	37-205-01	37-205-01	37-205-01	37-205-01	37-205-01	Spring—cue link
115	37-204-01	37-204-01	37-204-01	37-204-01	37-204-01	Cue mounting Bkt.
116	37-204-01	37-204-01	37-204-01	37-204-01	37-204-01	Cue spool
117	20-064-01	20-064-01	20-064-01	20-064-01	20-064-01	Spring—program plate
118	20-064-01	20-064-01	20-064-01	20-064-01	20-064-01	Spring—secondary plate
119	20-064-01	20-064-01	20-064-01	20-064-01	20-064-01	Program plate
120	36-045-01	36-045-01	36-045-01	36-045-01	36-045-01	Sieve
121	---	40-032-01	40-032-01	40-032-01	40-032-01	Spring—stop lever
122	---	37-199-02	37-199-02	37-199-02	37-199-02	Stop lever
123	---	37-199-02	37-199-02	37-199-02	37-199-02	Spring size selector lever
124	---	17-567-02	17-567-02	17-567-02	17-567-02	Size selector lever
125	---	40-564-01	40-564-01	40-564-01	40-564-01	Spring—compression
126	---	40-564-01	40-564-01	40-564-01	40-564-01	"c" clip
127	---	38-137-01	38-137-01	38-137-01	38-137-01	Drive plate bracket
128	---	40-286-01	40-286-01	40-286-01	40-286-01	Drive plate
129	---	10-309-01	10-309-01	10-309-01	10-309-01	Bias plate
130	---	40-283-01	40-283-01	40-283-01	40-283-01	Fibre washer
131	---	23-292-01	23-292-01	23-292-01	23-292-01	Spring—override
132	---	37-265-01	37-265-01	37-265-01	37-265-01	"c" clip
133	---	10-307-01	10-307-01	10-307-01	10-307-01	Spring—drive plate
134	---	38-541-01	38-541-01	38-541-01	38-541-01	Line cord
135	---	22-560-01	22-560-01	22-560-01	22-560-01	Screw
136	---	40-155-01	40-155-01	40-155-01	40-155-01	Phone socket
137	---	23-292-01	23-292-01	23-292-01	23-292-01	Screw
138	---	40-371-01	40-371-01	40-371-01	40-371-01	Nut—VIA foot (4)
139	---	10-386-01	10-386-01	10-386-01	10-386-01	VIA foot (4)
140	20-181-01	20-181-01	20-181-01	20-181-01	20-181-01	Transit screw (4)
141	10-320-01	10-320-01	10-320-01	10-320-01	10-320-01	"c" clip (4)
142	20-293-03	20-293-03	20-293-03	20-293-03	20-293-03	Washer (4)
143	39-227-01	39-227-01	39-227-01	39-227-01	39-227-01	Grommet (4)
144	10-420-01	10-420-01	10-420-01	10-420-01	10-420-01	Rate adjuster
145	39-144-01	39-144-01	39-144-01	39-144-01	39-144-01	Nut
146	23-180-01	23-180-01	23-180-01	23-180-01	23-180-01	VIA spring Assy.
147	22-023-01	22-023-01	22-023-01	22-023-01	22-023-01	Mounting block
148	37-182-01	37-182-01	37-182-01	37-182-01	37-182-01	Washer
149	37-188-01	37-188-01	37-188-01	37-188-01	37-188-01	Screw—VIA wheel
150	21-280-01	21-280-01	21-280-01	21-280-01	21-280-01	Screw—reflector Bkt.
151	10-316-01	10-316-01	10-316-01	10-316-01	10-316-01	Screw—terminal strip
152	37-278-01	37-278-01	37-278-01	37-278-01	37-278-01	Bel—VIA
153	20-293-02	20-293-02	20-293-02	20-293-02	20-293-02	Heyco—line cord
154	22-012-01	22-012-01	22-012-01	22-012-01	22-012-01	Heyco—grd. lead
155	20-047-01	20-047-01	20-047-01	20-047-01	20-047-01	Spacer—rate adj. pulley
156	20-268-02	20-268-02	20-268-02	20-268-02	20-268-02	Timing pulley
157	20-187-01	20-187-01	20-187-01	20-187-01	20-187-01	"c" clip
158	27-030-01	27-030-01	27-030-01	27-030-01	27-030-01	Insulator
159	12-057-04	12-057-04	12-057-04	12-057-04	12-057-04	Terminal strip Assy.
160	12-057-01	12-057-01	12-057-01	12-057-01	12-057-01	Ferrite core
161	38-201-01	38-201-01	38-201-01	38-201-01	38-201-01	Capacitor—pop filter
162	37-258-01	37-258-01	37-258-01	37-258-01	37-258-01	Choke
163	23-180-01	23-180-01	23-180-01	23-180-01	23-180-01	
164	28-192-01	28-192-01	28-192-01	28-192-01	28-192-01	
165	21-280-01	21-280-01	21-280-01	21-280-01	21-280-01	
166	14-252-01	14-252-01	14-252-01	14-252-01	14-252-01	
	14-374-01	14-374-01	14-374-01	14-374-01	14-374-01	
	12-043-02	12-043-02	12-043-02	12-043-02	12-043-02	



BIC Models 916MP | 916MPC

Part numbers may change. When ordering parts indicate model number, part number and description.