

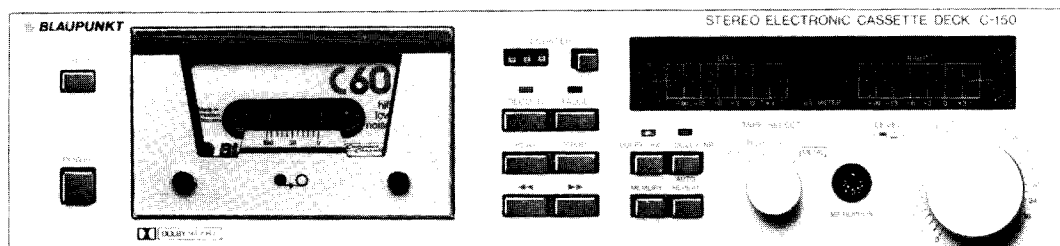
**BLAUPUNKT** HiFi-System  
BOSCH Gruppe

**STEREO ELECTRONIC  
CASSETTE DECK**

**C-150 HXM**

**7 620 470**

Schaltbild · Schematic  
Ersatzteilliste · Spare Parts List



Änderungen vorbehalten!  
Nachdruck – auch auszugsweise – nur mit  
Quellenangabe gestattet

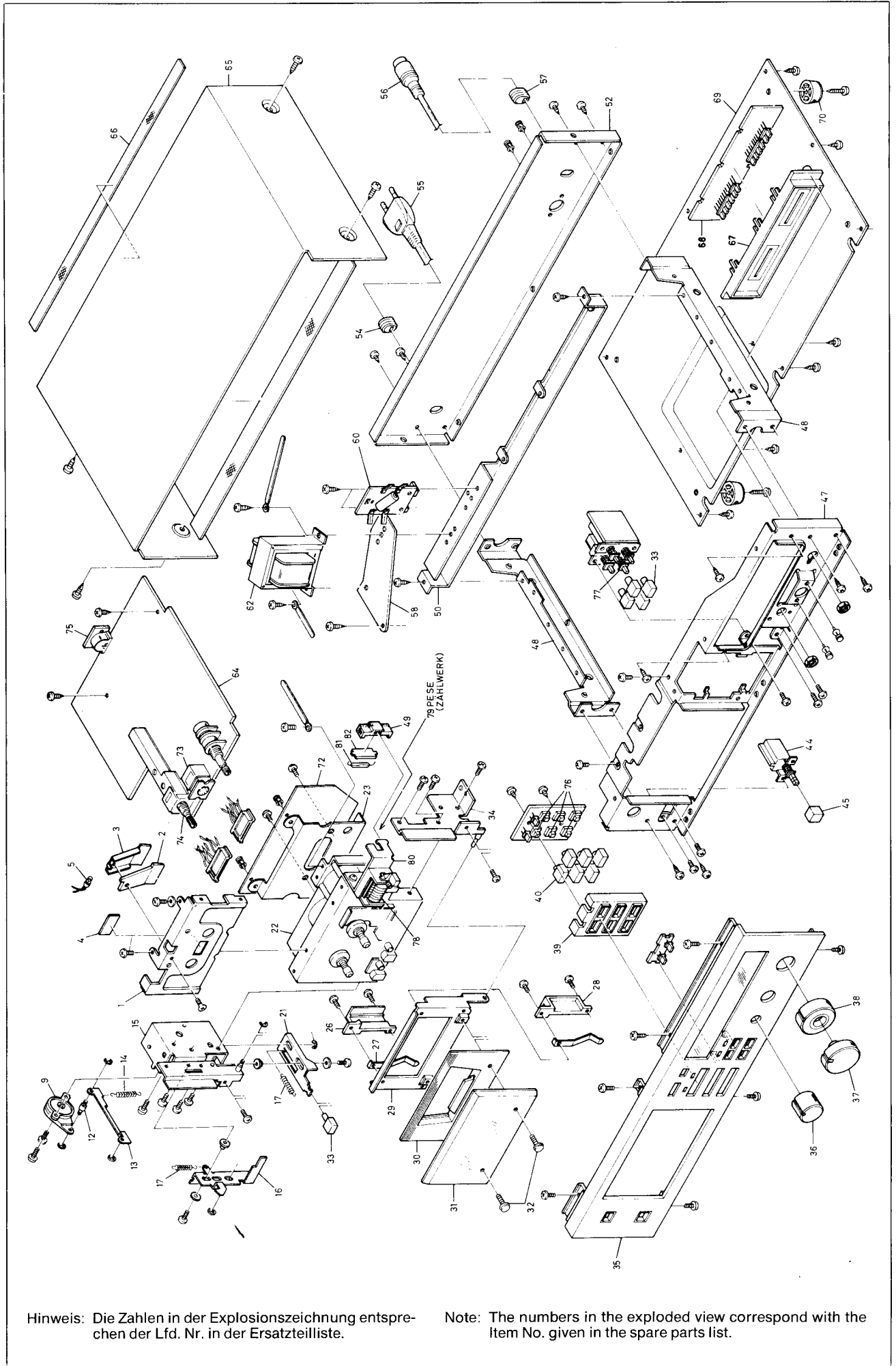
Blaupunkt-Werke GmbH, Hildesheim · Mitglied der Bosch-Gruppe  
Printed in Germany by Hagemann-Druck, Hildesheim

Modifications reserved!  
Reproduction – also by extract – only  
permitted with indication of authorities used  
BP/KDB 2 D80 220 013

# Explosionszeichnung

# Exploded View

C  
K  
M  
'0



Hinweis: Die Zahlen in der Explosionszeichnung entsprechen der Lfd. Nr. in der Ersatzteilliste.

Note: The numbers in the exploded view correspond with the Item No. given in the spare parts list.



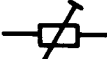




## Ersatzteilliste

## Spare Parts List

| Lfd. Nr. Item No. | Bezeichnung            | Designation         | Best.-Nr. Part No. | Preis-gruppe Price group |
|-------------------|------------------------|---------------------|--------------------|--------------------------|
| 1                 | Deckblech              | Cover sheet metal   | 8 629 107 032      |                          |
| 2                 | Lichtleiter            | Light guiding       | 8 629 117 702      |                          |
| 3                 | Halteblech             | Holding sheet metal | 9 629 117 800      |                          |
| 4                 | Farbfilter             | Colour filter       | 8 629 117 705      |                          |
| 5                 | Lampe                  | Lamp                | 8 629 187 103      |                          |
| 9                 | Dämpfer                | Damper              | 8 629 117 117      | BH                       |
| 12                | Achse                  | Axial piece         | 8 629 117 225      |                          |
| 13                | Hebel                  | Lever               | 8 629 117 180      |                          |
| 14                | Feder                  | Spring              | 8 629 117 603      | OF                       |
| 15                | Halterung              | Holder              | 8 629 117 184      |                          |
| 16                | Auswurfhebel           | Ejector             | 8 629 117 108      |                          |
| 17                | Feder                  | Spring              | 8 629 117 602      |                          |
| 21                | Schlitten              | Slide               | 8 629 117 109      |                          |
| 22                | Laufwerk               | Drive mechanism     | 8 629 127 407      | U8                       |
| 23                | Lagerblech             | Support plate       | 8 629 117 185      |                          |
| 26                | Winkel                 | Angle               | 8 629 117 118      |                          |
| 28                | Halter                 | Holder              | 8 629 117 119      |                          |
| 29                | Cassettenfach Rahmen   | Cassette bay frame  | 8 629 107 054      |                          |
| 30                | Cassettenfachabdeckung | Cassette bay cover  | 8 629 107 019      |                          |
| 31                | Blende                 | Mask                | 8 629 107 015      | BH                       |
| 32                | Rändelschraube         | Knurled screw       | 8 629 117 501      | OJ                       |
| 33                | Tastenkopf             | Key button          | 8 629 117 002      | OD                       |
| 34                | Winkel                 | Angle               | 8 629 117 186      |                          |
| 35                | Frontplatte            | Front panel         | 8 629 107 055      | MR                       |
| 36                | Schaltknopf            | Switch knob         | 8 629 117 008      |                          |
| 37                | Drehknopf              | Rotary knob         | 8 629 117 010      | DA                       |
| 38                | Drehknopf              | Rotary knob         | 8 629 117 011      | CE                       |
| 39                | Tastenführung          | Key guide           | 8 629 127 236      |                          |
| 40                | Tastenkopf             | Key button          | 8 629 117 003      | OD                       |
| 44                | POWER-Schalter         | POWER switch        | 8 629 127 200      | CK                       |
| 45                | Knopf                  | Knob                | 8 629 117 000      | AB                       |
| 47                | Montageplatte          | Mounting plate      | 8 629 107 051      |                          |
| 48                | Winkel                 | Angle               | 8 629 107 025      |                          |
| 49                | Halterung              | Holder              | 8 629 117 105      |                          |
| 50                | Träger                 | Carrier             | 8 629 107 028      |                          |
| 52                | Rückwand               | Rear panel          | 8 629 107 056      |                          |
| 54                | Zugentlastung          | Traction relief     | 8 629 117 901      |                          |
| 55                | Netzkabel              | Power cable         | 8 629 197 703      |                          |
| 56                | Diodenstecker          | Diode connector     | 8 629 197 701      | FB                       |
| 57                | Zugentlastung          | Traction relief     | 8 629 117 900      |                          |
| 58                | Trägerblech            | Carrier plate       | 8 629 117 121      |                          |
| 60                | Platte                 | Plate               | 8 629 127 616      |                          |
| 62                | Netztransformer        | Power transformer   | 8 629 137 208      | LP                       |
| 64                | Hauptplatte            | Main plate          | 8 629 127 909      | X7                       |
| 65                | Gehäusedeckel          | Chassis cover       | 8 629 107 012      | KN                       |
| 66                | Leiste                 | Bar                 | 8 629 117 123      |                          |
| 67                | dB METER-Skala         | dB METER scale      | 8 629 107 020      |                          |
| 68                | Anzeigeplatte          | Display panel       | 8 629 127 910      |                          |
| 69                | Bodenblech             | Bottom plate        | 8 629 107 057      |                          |
| 70                | Schraubfuß             | Srewed-on foot      | 8 629 107 035      |                          |
| 72                | Motorregel-Platte      | Control unit        | 8 629 127 911      |                          |
| 73                | MICROPHONE-Buchse      | MICROPHONE socket   | 8 629 127 601      | CB                       |
| 74                | TAPE SELECT-Schalter   | TAPE SELECT switch  | 8 629 127 217      | EG                       |
| 75                | PICK UP TAPE-Buchse    | PICH UP TAPE socket | 8 629 127 602      | BO                       |
| 76                | Tastschalter           | Key switch          | 8 629 127 204      | AA                       |
| 77                | Druckschalter          | Push switch         | 8 629 127 210      | HB                       |
| 78                | Zählwerk               | Counter             | 8 629 127 411      |                          |
| 79                | Antriebsriemen         | Drive belt          | 8 629 117 907      |                          |
| 80                | Winkel                 | Angle               | 8 629 117 145      |                          |
| 81                | Reedkontakt            | Reed contact        | 8 629 127 222      | AE                       |
| 82                | Platte                 | Plate               | 8 629 127 900      |                          |

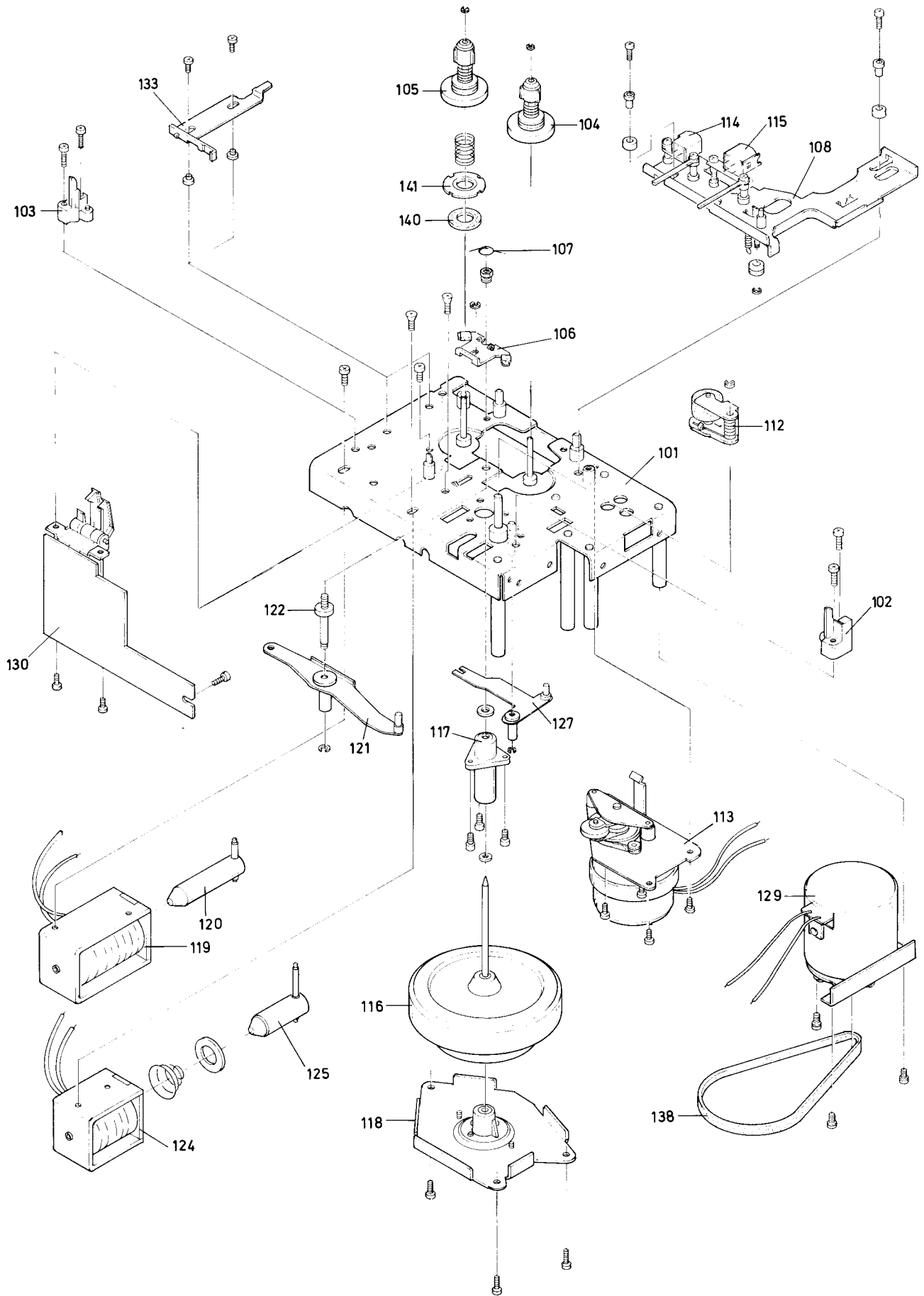
## Ersatzteilliste

## Spare Parts List

| Lfd. Nr.<br>Item No. | Bezeichnung<br>Designation      | Pos. im Schaltbild<br>Pos. in schematic  | Symbol   | Bestell-Nr.<br>Part No. | Preisgruppe<br>Price group |
|----------------------|---------------------------------|--|--|-------------------------|----------------------------|
| 225                  | 1 N 34 A                        | D 101, 201   |  | 8 905 406 012           | OC                         |
| 226                  | 1 S 55                          | D 1, 2   |  | 8 905 406 105           |                            |
| 227                  | 1 S 2076                        | D 102, 202, 301, 302, 303, 451, 452, 454, 455, 501, 502, 509, 510, 515, 601, 602 |  | 8 905 406 018           | OB                         |
| 228                  | 10 D 1                          | D 3  |    | 8 659 046 303           |                            |
| 229                  | HZ 7 B-2                        | D 513  |  | 8 905 406 102           |                            |
| 230                  | HZ 15-1                         | D 405  |  | 8 905 406 040           |                            |
| 231                  | HZ 22-2                         | D 404  |  | 8 905 406 042           |                            |
| 232                  | MZ-303 A                        | D 456  |  | 8 905 406 047           |                            |
| 233                  | RB 152                          | D 401  |    | 8 905 406 104           |                            |
| 234                  | RV 06                           | D 406, 407, 453, 503-508, 511, 512, 603, 604, 605                                |  | 8 905 406 002           | OB                         |
| 235                  | S 2 VC 10                       | D 402, 403   |  | 8 905 406 036           |                            |
| 236                  | LED (rot/red)                   | D 514, 515   |  | 8 905 405 365           | OH                         |
| 237                  | LED (grün/green)                | D 542  |  | 8 905 405 363           | AO                         |
| 238                  | LED (gelb/yellow)               | D 541  |  | 8 905 405 303           |                            |
| 239                  | LED (rot/red) 2fach/2-fold      | D 703, 704   |  | 8 905 405 369           | AE                         |
| 240                  | LED (grün/green) 4fach/4-fold   | D 701, 702   |  | 8 905 405 367           | DF                         |
| 255                  | 500 $\Omega$                    | VR 1   |  | 8 901 499 021           |                            |
| 256                  | 10 k $\Omega$                   | VR 103, 104, 204   |  | 8 901 499 025           |                            |
| 257                  | 20 k $\Omega$                   | VR 303-306   |    | 8 901 499 032           |                            |
| 258                  | 50 k $\Omega$                   | VR 101, 106, 201, 206  |  | 8 901 499 033           |                            |
| 259                  | 50 k $\Omega$                   | VR 102   |  | 8 901 499 035           |                            |
| 260                  | 100 k $\Omega$                  | VR 301, 302  |  | 8 901 499 040           |                            |
| 265                  | 2,2 $\Omega$                    | R 401  |  | 8 900 310 223           |                            |
| 266                  | 4,7 $\Omega$                    | R 416  |  | 8 900 310 470           |                            |
| 267                  | 22 $\Omega$                     | R 404, 411   |  | 8 900 310 221           |                            |
| 268                  | NTC 470                         | TH 1   |  | 8 901 325 037           |                            |
| 269                  | 4,7 $\Omega$ /2 W               | R 415  |  | 8 901 028 227           |                            |
| 270                  | 56 $\Omega$ /5 W                | R 534  |  | 8 901 085 626           |                            |
| 275                  | Filter (Dolby)                  | L 101, 201   |  | 8 629 137 017           |                            |
| 276                  | Spule                           | L 102, 202   |  | 8 629 137 002           |                            |
| 277                  | Filter                          | L 103, 203   |  | 8 629 137 011           |                            |
| 278                  | Filter                          | T 301  |  | 8 629 137 010           |                            |
| 281                  | 22 nF/450 V ~                   | C 001  |  | 8 903 125 332           |                            |
| 285                  | Magnet-Schalter/Solenoid switch | S 101  |  | 8 629 127 218           |                            |
| 291                  | 0,5 A                           | F 401  |  | 1 904 522 830           |                            |
| 292                  | 1 A                             | F 402  |  | 1 904 522 836           |                            |

Handelsübliche Kondensatoren und Widerstände sind in der Ersatzteilliste nicht aufgeführt. Wir bitten Sie, diese Teile im Fachhandel zu beziehen.

Capacitors and resistors usual in trade are not mentioned in the spare parts list. Kindly buy these parts from the specialized trade.



Hinweis: Die Zahlen in der Explosionszeichnung entsprechen der Lfd. Nr. in der Ersatzteilliste.

Note: The numbers in the exploded view correspond with the Item No. given in the spare parts list.



## Ersatzteilliste

## Spare Parts List

| Lfd. Nr. Item No. | Bezeichnung      | Designation           | Best.-Nr. Part No. | Preis-gruppe Price group |
|-------------------|------------------|-----------------------|--------------------|--------------------------|
| 101               | Chassis          | Chassis               | 8 629 107 042      | CE<br>KN                 |
| 102               | Halterung        | Holder                | 8 629 117 147      |                          |
| 103               | Halterung        | Holder                | 8 629 117 148      |                          |
| 104               | Wickelteller     | Spindle               | 8 629 117 227      |                          |
| 105               | Wickelteller     | Spindle               | 8 629 117 227      |                          |
| 106               | Bremse           | Brake                 | 8 629 117 150      |                          |
| 107               | Feder            | Spring                | 8 629 117 611      |                          |
| 108               | Kopfträger       | Head carrier          | 9 629 117 149      |                          |
| 112               | Andruckrolle     | Rubber pinch roller   | 8 629 117 228      |                          |
| 113               | Wickelmotor      | Winding motor         | 8 629 127 408      |                          |
| 114               | Löschkopf        | Erase head            | 8 629 137 603      |                          |
| 115               | A/W-Kopf         | Recording/replay head | 8 629 137 602      |                          |
| 116               | Schwungmasse     | Centrifugal mass      | 8 629 117 229      |                          |
| 117               | Lager            | Bearing               | 8 629 117 230      |                          |
| 118               | Lagerblech       | Bearing sheet metal   | 8 629 117 151      |                          |
| 119               | Elektromagnet    | Electromagnet         | 8 629 137 025      |                          |
| 120               | Kern             | Core                  | 8 629 117 231      |                          |
| 121               | Hebel            | Lever                 | 8 629 117 152      |                          |
| 122               | Achse            | Axial piece           | 8 629 117 233      |                          |
| 124               | Elektromagnet    | Electromagnet         | 8 629 137 026      |                          |
| 125               | Kern             | Core                  | 8 629 117 232      |                          |
| 127               | Hebel            | Lever                 | 8 629 117 153      |                          |
| 129               | Capstanmotor     | Capstan motor         | 8 629 127 404      |                          |
| 130               | Motorregelplatte | Motor control board   | 8 629 127 905      |                          |
| 133               | Winkel           | Angle                 | 8 629 117 154      |                          |
| 138               | Antriebsriemen   | Drive belt            | 8 629 117 908      |                          |
| 140               | Scheibe          | Washer                | 8 629 117 910      |                          |
| 141               | Scheibe          | Washer                | 8 629 117 155      |                          |
|                   | Schrauben        | Screws                | 8 627 000 573      |                          |
|                   | Scheiben         | Washers               | 8 627 000 574      |                          |
|                   | Federn           | Springs               | 8 627 000 575      |                          |

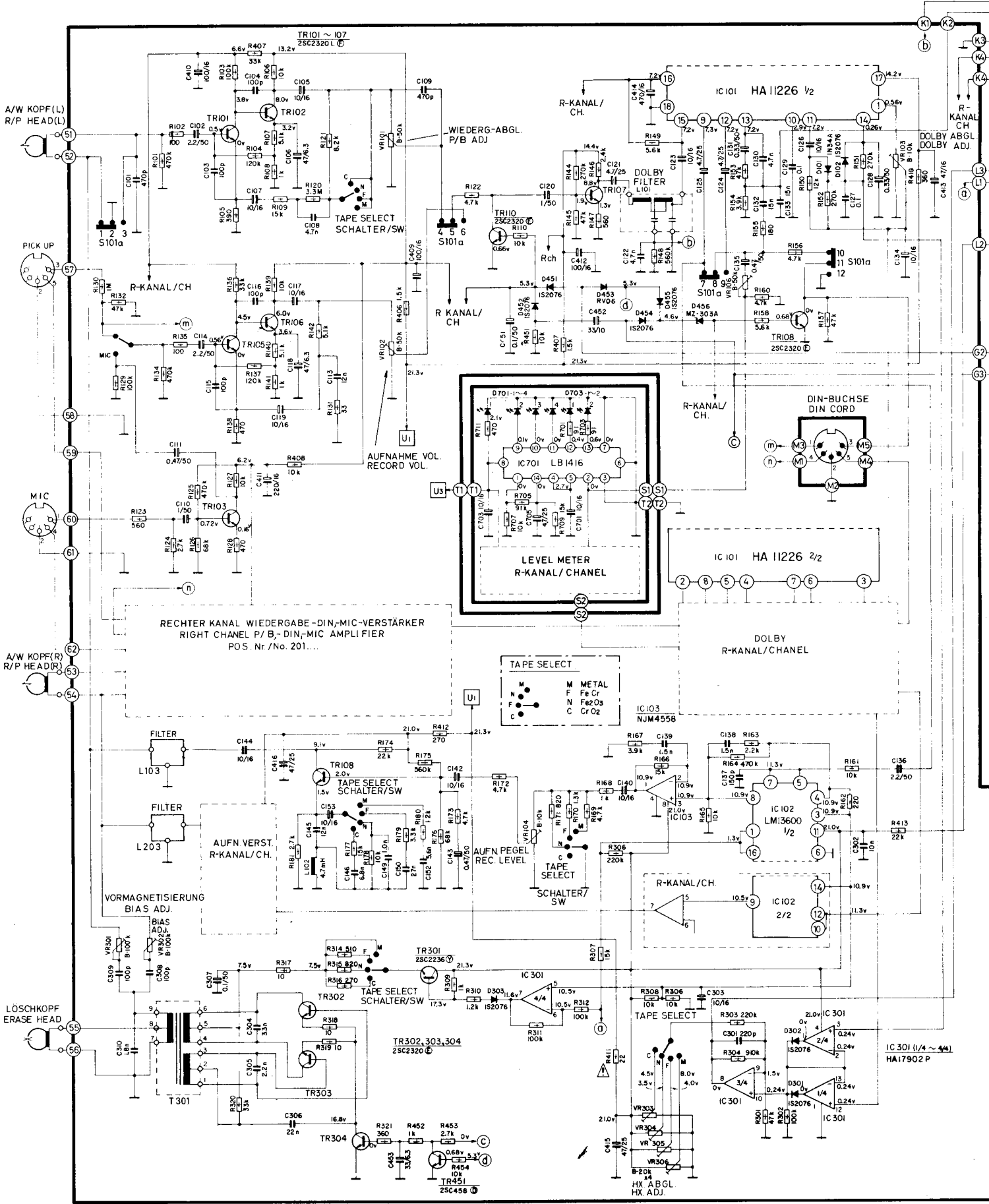
## Ersatzteilliste

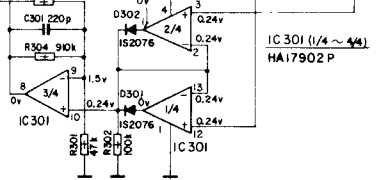
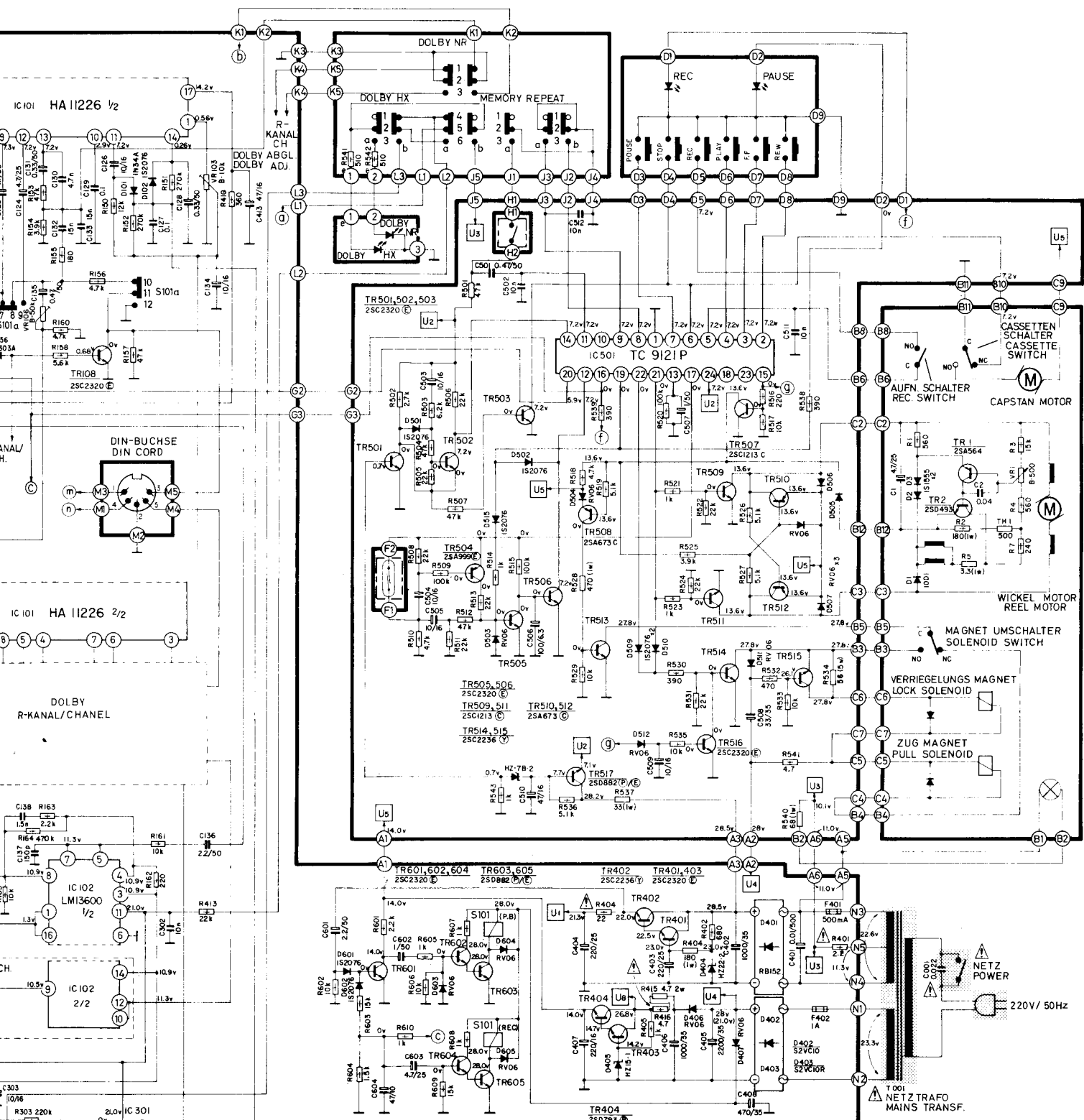
## Spare Parts List

| Lfd. Nr. Item No. | Bezeichnung Designation | Pos. im Schaltbild Pos. in schematic  | Symbol   | Bestell-Nr. Part No. | Preis-gruppe Price group |
|-------------------|-------------------------|---|--|----------------------|--------------------------|
| 201               | HA 11 226               | IC 101  |  | 8 905 956 056        | KN                       |
| 202               | HA 17 902 P             | IC 301  |  | 8 905 956 416        |                          |
| 203               | LB 1416                 | IC 701, 702   |  | 8 905 956 138        |                          |
| 204               | LM 13 600               | IC 102  |  | 8 905 956 415        |                          |
| 205               | NJM 4558 D-D            | IC 103  |  | 8 905 956 417        |                          |
| 206               | TC 9121 P               | IC 501  |  | 8 905 901 023        |                          |
| 210               | 2 SA 564                | TR 1  |  | 8 905 705 522        | AB<br>AH<br>OE           |
| 211               | 2 SA 673 C              | TR 508, 510, 512  |  | 8 905 706 653        |                          |
| 212               | 2 SA 999 E              | TR 504  |  | 8 905 705 514        |                          |
| 213               | 2 SC 458 (D)            | TR 451  |  | 8 905 705 646        | OG                       |
| 214               | 2 SC 1213 C             | TR 507, 509, 511  |  | 8 905 706 669        |                          |
| 215               | 2 SC 2236 (Y)           | TR 301, 402, 514, 515   |  | 8 905 706 519        |                          |
| 216               | 2 SC 2320 (E)           | TR 108, 110, 208, 210, 302, 303, 304, 401, 403, 501, 502, 503, 505, 506, 516, 601, 602, 604 |  | 8 905 705 511        | OC                       |
| 217               | 2 SC 2320 L (F)         | TR 101-107, 109 201-207, 209  |  | 8 905 705 510        | OD                       |
| 218               | 2 SD 493                | TR 2  |  | 8 905 705 454        | AH                       |
| 219               | 2 SD 726 (C)            | TR 513  |  | 8 905 706 663        |                          |
| 220               | 2 SD 793                | TR 404  |  | 8 905 706 015        |                          |
| 221               | 2 SD 882 (P/E)          | TR 517, 603, 605  | 8 905 706 638  |                      |                          |

Schaltbild

Schematic





Gleichspannungen Tol.  $\pm 15\%$  mit VM Ri 50 k $\Omega$  gegen  $\perp$  gemessen.  
 DC voltages tol.  $\pm 15\%$  measured with voltmeter Ri 50 k $\Omega$  against  $\perp$ .

Für Werte ohne Bezeichnung  $\mu\text{F}$  oder  $\Omega$  einsetzen.  
 Read  $\mu\text{F}$  or  $\Omega$  respectively unless otherwise noted.

Sicherheitsbauelement (muß durch Originalteil ersetzt werden).  
 Security component (must be replaced by original part).