

MEKANISK STYKLISTE/ MECHANICAL PARTS

NEDERSTE CHASSIS/BOTTOM CHASSIS

13Modul	3302318	Skærm f. sikringsholder	Screen f. fuse holder
	3172085	Isolationsstykke f. sikringsholder	Insulation for fuse holder
	2938143	Bøsning f. sikringsholder	Bushing for fuse holder
13C1	4200421	1000 µF -10+50% 6.3V	1000 µF -10+50% 6.3V

Øvrige dele se side 4-1/Other parts, see page 4-1

ØVERSTE CHASSIS/TOP CHASSIS

2046	3168160	Betjeningspanel	Operating panel
2047	2775791	Knapsæt	Set of buttons

29Modul	8002482	PC, sekundær betjening	PC, secondary operation
---------	---------	------------------------	-------------------------

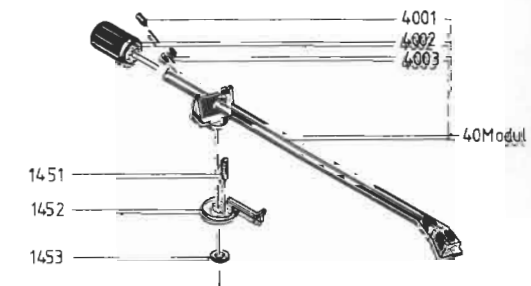
34Modul	8002447	HP-Tape indikator	HP-Tape Indicator
---------	---------	-------------------	-------------------

Øvrige dele se side 4-4/Other parts, see page 4-4

GRAMMOFONCHASSIS/CHASSIS, RECORD PLAYER

1408	3164412	Støvlåg	Dust cover
1435	8954660	Pick-up MMC 20 EN (replacement)	Pick-up MMC 20 EN (replacement)
1438	3458245	Topplade	Top plate
1451	2072101	Løfteskruer	Lifting screw
1452	2854076	Løftearm	Lifting arm
1453	2622271	Skive	Washer

PICK-UP ARM 2850101

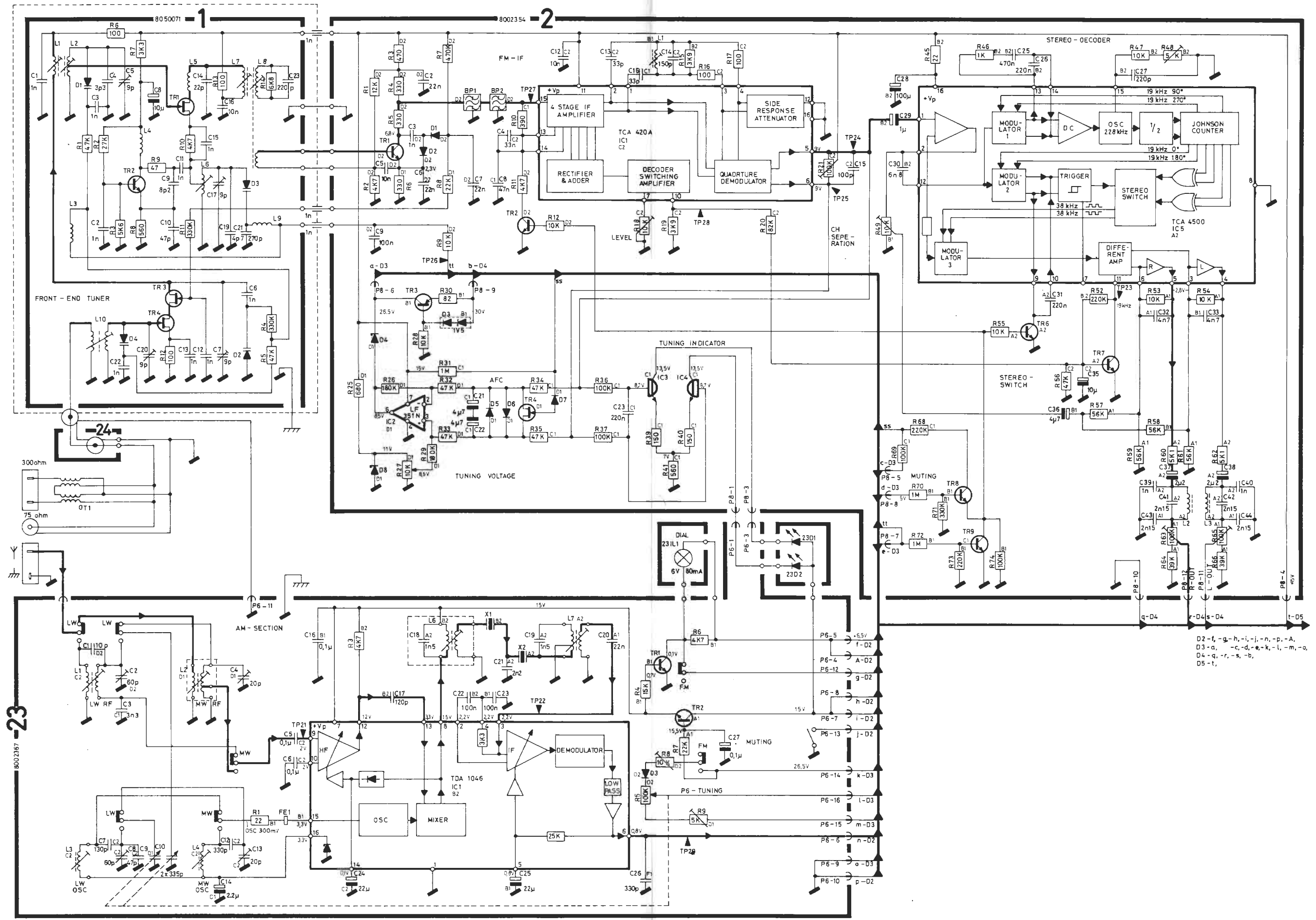


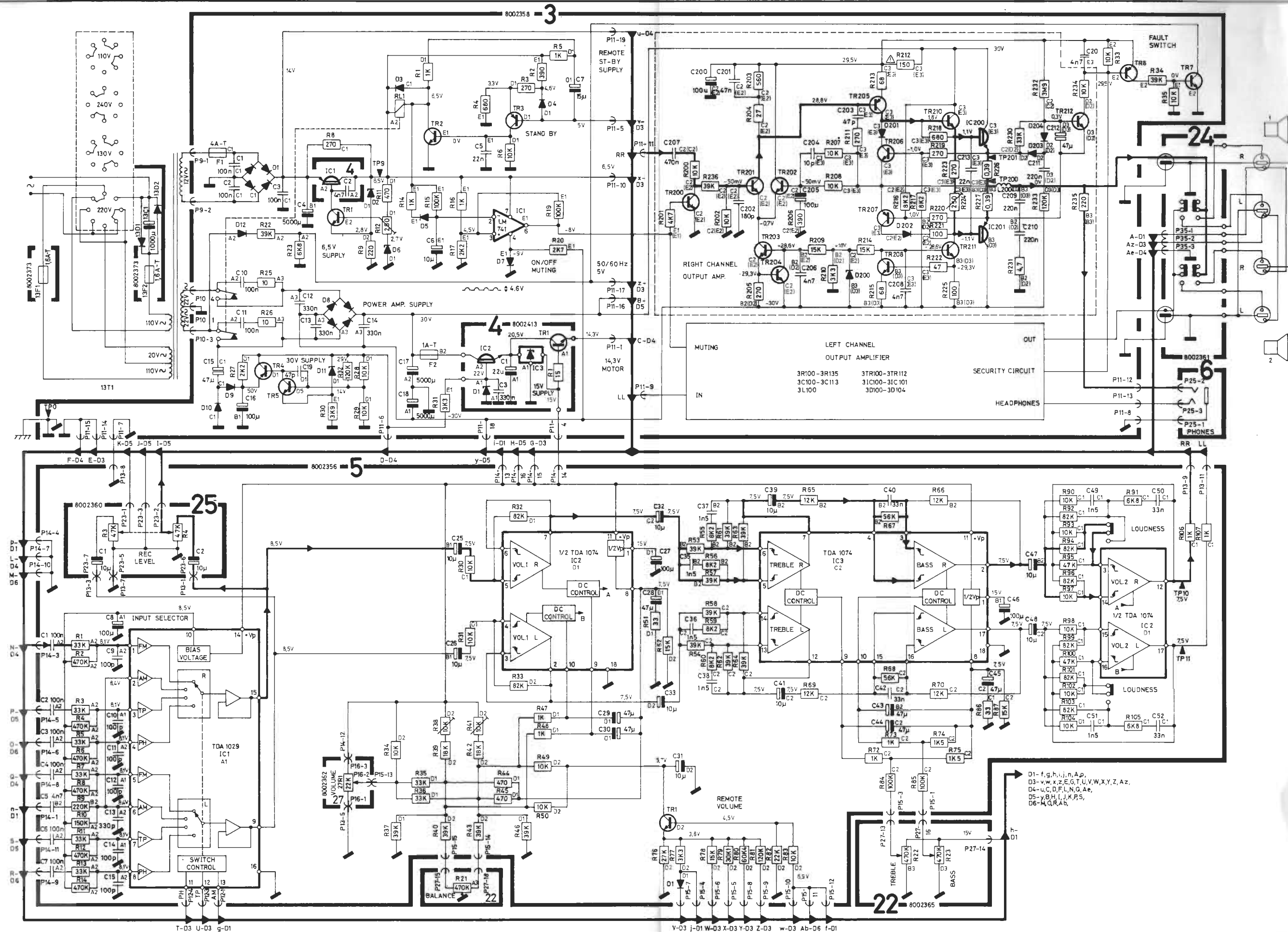
4001	2070035	Gevindstift M3 x 6	Threaded pin M3 x 6
4002	3342076	Kontravægt	Counterweight
4003	2576114	Justerbøsning	Adjustment bushing

Øvrige dele se side 4-5/Other parts, see page 4-5

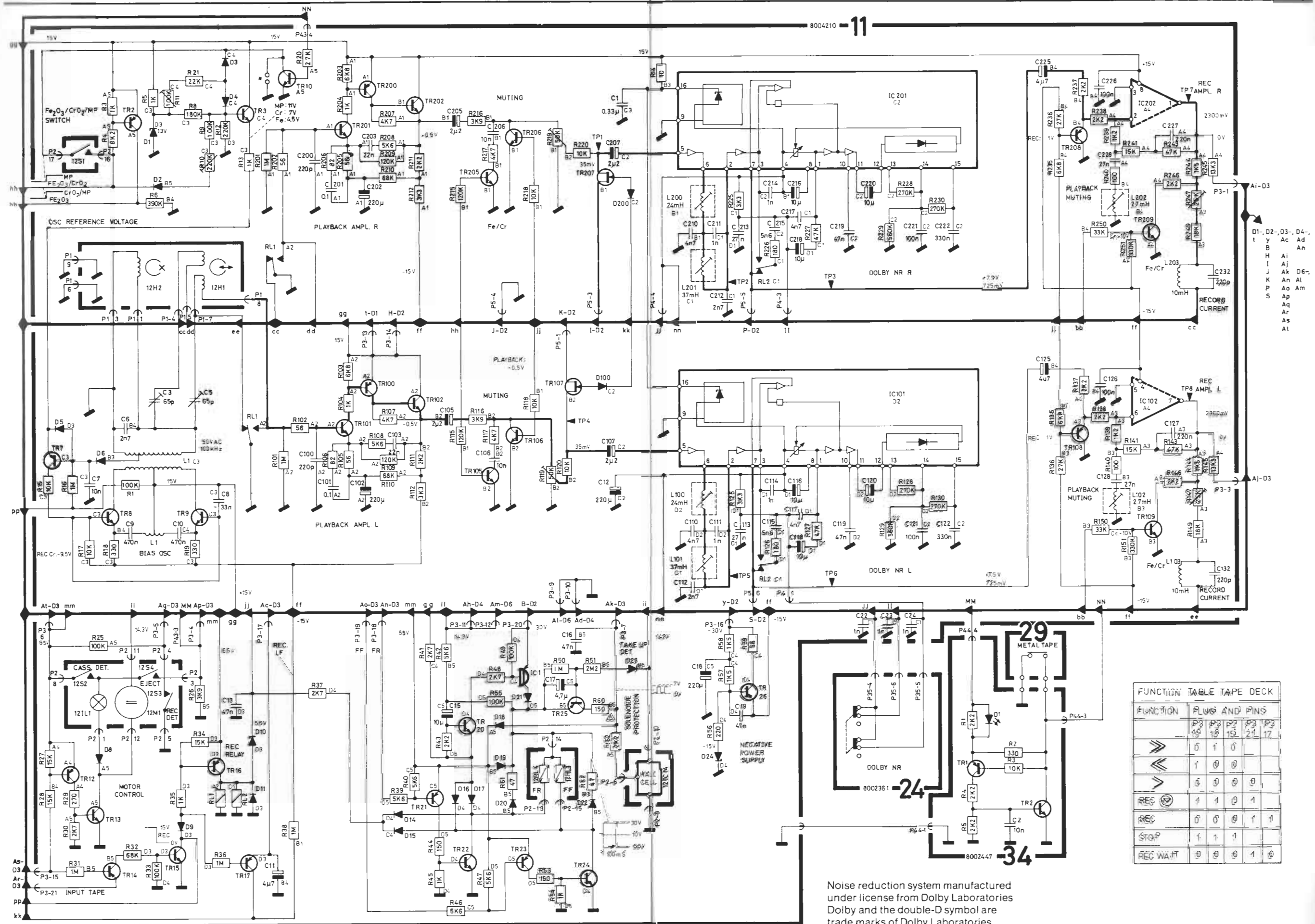
SERVICE MANUAL







D1-f, g, h, j, n, p,
D3-v, w, x, z, E, G, T, U, V, W, X, Y, Z, Az,
D4-u, c, d, f, l, n, g, a, e,
D5-y, b, h, l, j, k, p, s,
D6-m, q, r, a, b.



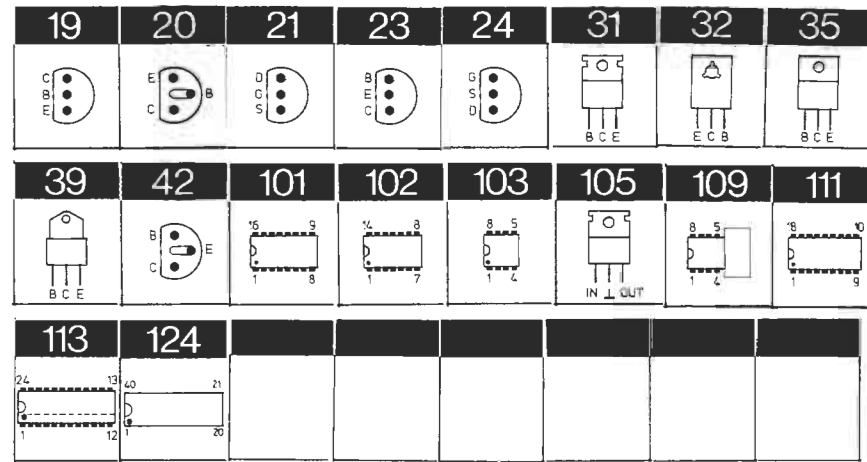
FUNCTION TABLE TAPE DECK

FUNCTION	P3-1	P3-2	P3-3	P3-4	P3-5
▶▶	0	1	0	1	1
◀◀	1	0	0	0	0
▶	0	0	0	0	0
REC	1	1	0	1	1
REC	0	0	0	1	1
STOP	1	1	1	0	0
REC WAIT	0	0	0	1	0

Noise reduction system manufactured under license from Dolby Laboratories. Dolby and the double-D symbol are trade marks of Dolby Laboratories.

* TO BE SHORTED, WHEN P.C. ARE USED IN SETS, WITHOUT METAL TAPE SWITCH.

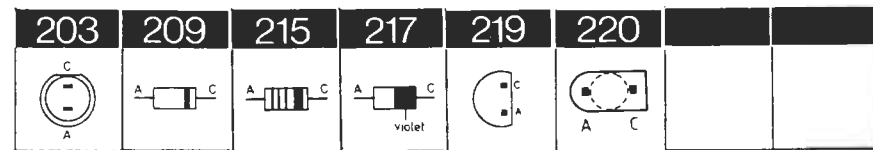
LIST OF TRANSISTORS AND IC's



1TR1	8320136	21	TIS88/3C2	3TR5	8320237	20	BC 546B
			green				
		21	SPF 2060	3TR7	8320097	20	BC 547B
1TR2	8320112	23	BF 495	3TR8	8320152	20	BC 557B
		23	BF 255				
1TR3	8320119	21	TIS88A	3TR100/200	8320366	19	MPS A16
1TR4				3TR101/201	8320377	20	BC 547C
2TR1	8320311	42	BF 240	3TR102/202			
2TR2	8320097	20	BC 547B	3TR103/203	8320097	20	BC 547B
2TR3	8320152	20	BC 557B	3TR104/204			
2TR4	8320396	24	2N 5639	3TR105/205	8320365	19	MPS H54
		24	MPF 4392	3TR106/206	8320097	20	BC 547B
2TR6	8320097	20	BC 547B	3TR107/207	8320152	20	BC 557B
2TR7				3TR108/208	8320097	20	BC 547B
2TR8				3TR110/210	8320321	19	MPS A06
2TR9	8320377	20	BC 547C	3TR111/211			
2IC1	8340033	101	TCA 420A	3TR112/212	8320237	20	BC 546B
2IC2	8340168	103	LF 351N	3IC1	8340141	103	LM 741CN
2IC3	8340054	19	MPS A13	3IC100/200	8340132	39	BDV 65A
2IC4				3IC101/201	8340133	39	BDV 64A
2IC5	8340134	101	TCA 4500	4TR1	8320429	32	BD 435
3TR1	8320097	20	BC 547B	4IC1	8340118	31	BDX 34A
3TR2	8320295	20	BC337			35	TEO 1089
			-25/18			35	FJ 2501
3TR3	8320152	20	BC 557B	4IC2	8340117	31	BDX 33A
3TR4	8320241	32	BD 138/W			35	TEO 1088
						35	FJ 3001

4IC3	8340064	105	LM 340T-15	11TR17	8320152	20	BC 557B	17IC1	8340108	109	MHN-3P2-RDS
		105	µA 7815CU								
		105	µA 7815UC	11TR20	8320097	20	BC 547B	17IC100/200	8340054	19	MPS A13
		105	MC 7815CT							19	TPS A13
		105	µA 7815CKG	11TR21	8320152	20	BC 557B				
5TR1	8320097	20	BC 547B	11TR22	8320427	32	BD 437	21TR1	8320331	20	BC 328-
5IC1	8340188	101	TDA 1029	11TR23	8320152	20	BC 557B	21TR2		25/18	
5IC2	8340187	111	TDA 1074	11TR24	8320427	32	BD 437	21TR3			
5IC3				11TR25	8320152	20	BC 557B	21TR4			
								21TR5			
6TR4	8320329	20	BC338/25	11TR26	8320428	32	BD 438	21TR6	8320104	20	BC 558B
6TR5	8320097	20	BC 547B	11TR100/200	8320152	20	BC 557B	21TR7	8320108	20	BC 548B
6TR6								21TR10	8320368	31	BD 533
6TR9				11TR101/201	8320344	20	BC 550B	21TR11	8320329	20	BC 338/25
6TR10				11TR102/202	8320097	20	BC 547B	21TR12	8320331	20	BC 328-
6IC1	8340193	103	TDA 4050	11TR105/205				21TR13		25/18	
6IC2	8340103	102	CA 1310E	11TR106/206				21TR14	8320108	20	BC 548B
		102	LM 1310N	11TR107/207	8320396	24	2N 5639	21IC1	8340199	101	SN74LS42
						24	MPF 4392	21IC2	8340156	101	SN74247N
6IC3	8340025	20	BC 516	11TR108/208	8320152	20	BC 557B	21IC3	8340054	19	MPS A13
		19	MPS A65							19	TPS A13
		19	SPS 5431	11TR109/209	8320366	19	MPS A16	21IC4	8340104	102	SN 16880N
7TR1	8320331	20	BC 328-					21IC5	8340200	124	µC 8048
		25/18		11TR110/210	8320152	20	BC 557B	21IC6	8340201	124	Exp. 8355
7IC1	8340191	113	SN76831	11TR111/211				21IC7	8340192	101	SN 7445N
			M-24	11TR112/212	8320237	20	BC 546B	22TR1	8320152	20	BC 557B
11TR2	8320152	20	BC 557B	11TR113/213	8320237	20	BC 546B	22TR2			
11TR3	8320097	20	BC 547B	11TR114/214	8320152	20	BC 557B	22TR3			
11TR7	8320152	20	BC 557B	11TR115/215	8320097	20	BC 547B	22TR4			
11TR8	8320237	20	BC 546B	11TR116/216	8320331	20	BC 328-	22TR5			
11TR9								22TR6			
11TR10	8320097	20	BC 547B	11TR117/217	8320152	20	BC 557B	23TR1	8320329	20	BC 338/25
11TR12	8320152	20	BC 557B	11TR118/218	8320429	32	BD 435	23TR2	8320237	20	BC 546B
11TR13	8320429	32	BD 435	11TR119/219	8320097	20	BC 547B	23IC1	8340196	101	TDA 1046
11TR14	8320152	20	BC 557B	11TR120/220	8320396	24	2N 5639	34TR1	8320152	20	BC 557B
11TR15	8320097	20	BC 547B			24	4PF 4392	34TR2	8320097	20	BC 547B
11TR16	8320331	20	BC 328-	17TR1	8320108	20	BC 548B				
		25/18		17TR2							
				17TR3							
				17TR4	8320331	20	BC 328-				
				17TR5			25/18				
				17TR6	8320108	20	BC 548B				
				17TR7	8320104	20	BC 558B				
				17TR8	8320097	20	BC 547B				
				17TR9	8320396	24	2N 5639				
				17TR100/200	8320344	20	BC 550B				

LIST OF DIODES, ETC.



1D1	8300041	209	BB103green	3D12	8300058	217	SFD 184
1D2						215	1N 4148
						209	1N 4148
1D3	8300050	209	BB 103blue	3D100/200	8300029	209	ZPD 12 V 5%
1D4						209	BZX 79 12V
						209	BZX 83 12V
2D1	8300058	217	SFD 184	3D101/201	8300058	217	SFD 184
2D2		215	1N 4148	3D102/202		215	1N 4148
		209	1N 4148	3D103/202		209	1N 4148
2D3	8300056	209	ZTE 1.5 10%	3D104/204			
2D4	8340190	209	ZTK 18	4D1	8300033	209	ZPD 22V 5%
2D5	8300058	217	SFD 184			209	BZX 79 22V
2D6		215	1N 4148			209	BZX 83 22V
2D7		209	1N 4148	5D1	8300058	217	SFD 184
2D8	8340189	209	ZTK 11			215	1N 4148
						209	1N 4148
3D1	8300297		B80C3700/ 2200	6D1	8330004	219	SFH 205
3D2	8300135	209	ZPD3.3V 5%	6D4	8300326	209	ZPD 11V 5%
		209	BZX 79 3.3V			209	BZX 83 C11
		209	BZX 83 3.3V			209	Bzx 79 C11
3D3	8300058	217	SFD 184	6D5	8300023	209	1N 4002RL
3D4		215	1N 4148	6D6			
3D5		209	1N 4148	7D1	8300056	209	ZTE 1.5 10%
3D6	8300222	209	ZPD2.7V 5%	8D2	8330022	203	LD 271
		209	BZX 83 2.7V	8D3			V-290-P
3D7	8300028	209	ZPD9.1V 5%	8D4			
		209	BZX 79 9.1V	11D1	8300029	209	ZPD 12V 5%
		209	BZX 83 9.1V			209	BZX 79 12 V
3D8	8300275		B80C5000/ 3300			209	BZX 83 12 V
3D9	8300023	209	1N 4002RL	11D2	8300058	217	SFD 184
3D10				11D3		215	1N 4148
				11D4		209	1N 4148
3D11	8300313	209	ZPD 15V 2%	11D5			
		209	BZX 79 15V	11D6			
			2%	11D8	8300023	209	1N 4002RL
		209	BZX 83 15V	11D9	8300058	217	SFD 184
			2%			215	1N 4148
						209	1N 4148

11D10	8300128	209	ZPD5.6V 5%	21D3	8300309	209	ZPD 4.7 2%
		209	BZX 79 5.6V			209	BZX 83 4.7V
		209	BZX 83 5.6V				2%
						209	BZX 79 4.7V
11D11	8300023	209	1N 4002RL				2%
11D14	8300058	217	SFD 184	21D4	8300058	217	SFD 184
11D15		215	1N 4148	21D5		215	1N 4148
11D16		209	1N 4148	21D6		209	1N 4148
11D17				21D7	8330010	220	CQY 73 N/K
11D18				21D8			
11D19	8300023	209	1N 4002RL	21D9			
11D20				21D10	8330009	220	CQY 41 N/N
11D21				21D11			
11D22				21D12	8300058	217	SFD 184
11D23	8300058	217	SFD 184	21D13		215	1N 4148
		215	1N 4148			209	1N 4148
		209	1N 4148	21DP1	8330028		FCS 8499
11D24	8300053	209	ZPD 15 5%	21DP2	8330029		FNA 8399
		209	BZX 79 15V				
		209	BZX 83 15V	22D1	8300058	217	SFD 184
11D100/200	8300058	217	SFD 184	22D2		215	1N 4148
		215	1N 4148	22D3		209	1N 4148
		209	1N 4148	22D4			
13D1	8300023	209	1N 4002RL	22D5			
13D2				22D6			
				22D7			
17D1	8300058	217	SFD 184	23D1	8330009	220	CQY 41 N/N
17D2		215	1N 4148	23D2			
17D3		209	1N 4148	23D3	8300058	217	SFD 184
17D4						215	1N 4148
17D5						209	1N 4148
17D6				34D1	8330001		5075B
17D7							
17D8							
18D1	8300023	209	1N 4002RL				
18D2							
18D3	8300058	217	SFD 184				
21D1		215	1N 4148				
21D2		209	1N 4148				

FM 8002354, PC2

RR39	5010057	150 ohms ±5% 1/8W
R40	5010057	150 ohms ±5% 1/8W

Øvrige dele se side 3-1/Other parts, see page 3-1

Remote, 8002352 PC6

R24	5010066	1.8 kohms ±5% 1/8W	C14	4101007	220 pF ±5% 63V
-----	---------	--------------------	-----	---------	----------------

Remote transmitter 8002383, PC7

C1	4010024	470 pF ±10% 63V
C2	4010024	470 pF ±10% 63V

Øvrige dele se side 3-4/Other parts, see page 3-4

Tape 8004210, PC11

R1	5010049	100 kohms ±5% 1/8W	R54	5010040	1 kohms ±5% 1/8W
R3	5010040	1 kohms ±5% 1/8W	R55	5010049	100 kohms ±5% 1/8W
R4	5010154	8.2 kohms ±5% 1/8W	R56	5010092	220 ohms ±5% 1/8W
R5	5010040	1 kohms ±5% 1/8W	R57	5001032	1.5 kohms ±10% 1/2W
R6	5010073	390 kohms ±5% 1/8W	R58	5001032	1.5 kohms ±10% 1/2W
R8	5010072	180 kohms ±5% 1/8W	R59	5010151	56 ohms ±5% 1/8W
R9	5010049	100 kohms ±5% 1/8W	R60	5010057	150 ohms ±5% 1/8W
R10	5370156	250 kohms ±20%	R61	5010742	47 ohms ±5% 1/8W
R11	5370128	100 kohms ±20%	R62	5010742	47 ohms ±5% 1/8W
R12	5010120	220 kohms ±5% 1/8W	R201	5010054	1 Mohms ±5% 1/8W
R13	5010040	1 kohms ±5% 1/8W	R202	5010151	56 ohms ±5% 1/8W
R14	5010506	10 ohms ±5% 1/8W	R203	5010052	6.8 kohms ±5% 1/8W
R15	5010059	10 kohms ±5% 1/8W	R204	5010040	1 kohms ±5% 1/8W
R16	5010054	1 Mohms ±5% 1/8W	R205	5010151	56 ohms ±5% 1/8W
R17	5010059	10 kohms ±5% 1/8W	R206	5010056	82 ohms ±5% 1/8W
R18	5010044	330 ohms ±5% 1/8W	R207	5010048	4.7 kohms ±5% 1/8W
R19	5010044	330 ohms ±5% 1/8W	R208	5010041	5.6 kohms ±5% 1/8W
R20	5010141	27 kohms ±5% 1/8W	R209	5010047	120 kohms ±5% 1/8W
R21	5010079	22 kohms ±5% 1/8W	R210	5010062	68 kohms ±5% 1/8W
R25	5010049	100 kohms ±5% 1/8W	R211	5010064	2.2 kohms ±5% 1/8W
R26	5010069	3.9 kohms ±5% 1/8W	R212	5010076	3.3 kohms ±5% 1/8W
R27	5010053	15 kohms ±5% 1/8W	R215	5010047	120 kohms ±5% 1/8W
R28	5010053	15 kohms ±5% 1/8W	R216	5010069	3.9 kohms ±5% 1/8W
R29	5010000	270 ohms ±5% 1/8W	R217	5010048	4.7 kohms ±5% 1/8W
R30	5010298	2.7 kohms ±5% 1/8W	R218	5010059	10 kohms ±5% 1/8W
R31	5010054	1 Mohms ±5% 1/8W	R219	5370061	50 kohms ±20%
R32	5010062	68 kohms ±5% 1/8W	R220	5010059	10 kohms ±5% 1/8W
R33	5010049	100 kohms ±5% 1/8W	R225	5010265	3.3 kohms ±2% 1/4W
R34	5010053	15 kohms ±5% 1/8W	R226	5010362	180 ohms ±5% 1/8W
R35	5010040	1 kohms ±5% 1/8W	R227	5010048	4.7 kohms ±5% 1/8W
R36	5010054	1 Mohms ±5% 1/8W	R228	5010083	270 kohms ±5% 1/8W
R37	5010298	2.7 kohms ±5% 1/8W	R229	5010071	560 kohms ±5% 1/8W
R38	5010054	1 Mohms ±5% 1/8W	R230	5010083	270 kohms ±5% 1/8W
R39	5010041	5.6 kohms ±5% 1/8W	R235	5010052	6.8 kohms ±5% 1/8W
R40	5010041	5.6 kohms ±5% 1/8W	R236	5010141	27 kohms ±5% 1/8W
R41	5010298	2.7 kohms ±5% 1/8W	R237	5010064	2.2 kohms ±5% 1/8W
R42	5010041	5.6 kohms ±5% 1/8W	R238	5010064	2.2 kohms ±5% 1/8W
R43	5010064	2.2 kohms ±5% 1/8W	R239	5010153	1.2 kohms ±5% 1/8W
R44	5010057	150 ohms ±5% 1/8W	R240	5010065	100 ohms ±5% 1/8W
R45	5010040	1 kohms ±5% 1/8W	R241	5010053	15 kohms ±5% 1/8W
R46	5010041	5.6 kohms ±5% 1/8W	R243	5010045	47 kohms ±5% 1/8W
R47	5010041	5.6 kohms ±5% 1/8W	R244	5010247	1.5 kohms ±5% 1/8W
R48	5010298	2.7 kohms ±5% 1/8W	R245	5020095	13.3 kohms ±1% 1/8W
R49	5010049	100 kohms ±5% 1/8W	R246	5010064	2.2 kohms ±5% 1/8W
R50	5010054	1 Mohms ±5% 1/8W	R247	5370173	25 kohms ±20%
R51	5010245	2.2 Mohms ±5% 1/8W	R249	5010135	18 kohms ±5% 1/8W
R52	5010064	2.2 kohms ±5% 1/8W	R250	5010075	33 kohms ±5% 1/8W
R53	5010057	150 ohms ±5% 1/8W	R251	5010117	330 kohms ±5% 1/8W

C1	4130106	330 nF ±20% 100V	C9	4130114	470 nF ±10% 100V
C3	4340003	65 pF	C10	4130144	470 nF ±10% 100V
C5	4340003	65 pF	C11	4201061	4.7 µF 63V
C6	4100141	2.7 nF ±5% 630V	C12	4200097	200 µF 16V
C7	4010041	10 nF -20+80% 40V	C13	4030015	47 µF -20+80% 16V
C8	4130110	33 nF ±20% 250V	C15	4201065	10 µF 63V

C16	4130087	47 nF ±10% 250V	C212	4100076	2.7 nF ±2.5% 630V
C17	4200108	4.7 µF ±20% 25V	C213	4130166	27 nF ±5% 250V
C18	4200299	220 µF 40V	C214	4010027	1 nF ±10% 100V
C19	4030015	47 nF -20+80% 16V	C215	4100049	5.6 nF ±1% 63V
C22	4010027	1 nF ±10% 100V	C216	4200342	10 µF -10+50% 63V
C23	4010027	1 nF ±10% 100V	C217	4100059	4.7 nF ±2.5% 63V
C24	4010027	1 nF ±10% 100V	C218	4200342	10 µF -10+50% 63V
C200	4010021	220 pF ±10% 100V	C219	4130087	47 nF ±10% 250V
C201	4130107	100 nF ±10% 250V	C220	4201061	10 µF ±2.5% 63V
C202	4200097	220 µF 16V	C221	4130107	100 nF ±10% 250V
C203	4130089	22 nF ±10% 250V	C222	4130106	330 nF ±20% 100V
C205	4201035	2.2 µF -10+50% 63V	C225	4200322	4.7 µF -10+50% 63V
C206	4130109	10 nF ±10% 250V	C226	4130107	100 nF ±10% 250V
C207	4201035	2.2 µF -10+50% 63V	C227	4130104	220 nF ±20% 100V
C210	4100059	4.7 nF ±2.5% 63V	C228	4130166	27 nF ±5% 250V
C211	4101019	1 nF ±5% 63V	C232	4010021	220 pF ±10% 100V

L1	8020338	OSC	L202	8022103	2.7 mH
L200	8022102	24 mH	L203	8022111	10 mH
L201	8022059	37 mH			

RL1	7600050	Relay 6V	RL2	7600050	Relay 6V
-----	---------	----------	-----	---------	----------

P1	7220139	Plug 11/10 pins	7500053	Contact pin
P2	7220183	Plug 17/16 pins	3304050	Screen/housing
P3	7220197	Plug 21/20 pins	3358137	Heat sink
P4	7220122	Plug 4/3 pins	0593070	Solder tag
P5	7220128	Plug 6/5 pins		
P6	7220122	Plug 4/3 pins		

PHONO, 8005038, PC17

R1	5011044	10 kohms 5% 1/4W	R21	5010141	27 kohms ±5% 1/8W
R2	5010071	560 kohms ±5% 1/8W	R22	5370068	25 kohms ±20%
R3	5010071	560 kohms ±5% 1/8W	R23	5010060	39 kohms ±5% 1/8W
R4	5010049	100 kohms ±5% 1/8W	R24	5010045	47 kohms ±5% 1/8W
R5	5010071	560 kohms ±5% 1/8W	R25	5010153	1.2 kohms ±5% 1/8W
R6	5010054	1 Mohms ±5% 1/8W	R26	5010777	22 ohms ±10% 0.7W
R7	5010045	10 kohms ±5% 1/8W	R27	5010045	47 kohms ±5% 1/8W
R8	5010071	560 kohms ±5% 1/8W	R201	5010092	220 ohms ±5% 1/8W
R9	5010063	150 kohms ±5% 1/8W	R202	5010045	47 kohms ±5% 1/8W
R10	5010063	150 kohms ±5% 1/8W	R203	5010044	330 ohms ±5% 1/8W
R11	5010049	100 kohms ±5% 1/8W	R204	5010083	270 kohms ±5% 1/8W
R12	5010059	10 kohms ±5% 1/8W	R205	5010047	120 kohms ±5% 1/8W
R13	5010431	2.7 Mohms ±5% 1/8W	R206	5010066	1.8 kohms ±5% 1/8W
R14	5010431	2.7 Mohms ±5% 1/8W	R207	5010092	220 ohms ±5% 1/8W
R15	5010059	10 kohms ±5% 1/8W	R208	5010048	4.7 kohms ±5% 1/8W
R17	5010054	1 Mohms ±5% 1/8W	R209	5010058	470 ohms ±5% 1/8W
R18	5010091	82 kohms ±5% 1/8W	R210	5010120	220 kohms ±5% 1/8W
R19	5020139	12.1 kohms ±1% 1/8W	R211	5020019	36.5 kohms ±20% 1/8W
R20	5370173	2.5 kohms ±5% 1/8W			

C1	4011022	4.7 nF -20+80% 40V	C15	4200322	4.7 µF -10+50% 63V
C2	4011022	4.7 nF -20+80% 40V	C16	4130103	100 nF ±20% 250V
C3	4130114	470 nF ±10% 100V	C17	4130078	47 nF ±20% 250V
C4	4201057	1 µF 35V	C18	4011022	4.7 nF -20+80% 40V
C5	4130103	100 nF ±20% 250V	C19	4201074	47 µF 40V
C8	4201058	0.47 µF 35V	C200	4201069	2.2 µF ±20% 35V
C9	4100098	68 nF ±2.5% 63V	C201	4130100	68 nF ±10% 250V
C10	4110027	1 nF ±10% 100V	C202	4000029	220 pF ±5% 63V
C11	4200432	10 nF -10+50% 63V	C203	4000019	68 pF ±5% 63V
C12	4201057	1 µF 35V	C204	4010065	2.7 nF ±10% 63V
C13	4010060	22 nF -20+80% 40V	C205	4130109	10 nF ±10% 250V
C14	4010060	22 nF -20+80% 40V			

P17	7220131	Plug 4/3 pins	7500013	Contact pin
P18	7220182	Plug 10/9 pins		
P19	7220130	Plug 8/7 pins		
P20	7220181	Plug 7/6 pins		
P21	7220160	Plug 5/4 pins		
P22	7220195	Plug 2/2 pins		

AM, 8002367, PC23

MP-Tape indicator
8002447 PC34

R8	5370074	10 kohms $\pm 20\%$	R9	5370058	5 kohms $\pm 20\%$
R1	5010064	2.2 kohms $\pm 5\%$ 1/8W	R4	5010064	2.2 kohms $\pm 5\%$ 1/8W
R2	5010044	330 ohms $\pm 5\%$ 1/8W	R5	5010064	2.2 kohms $\pm 5\%$ 1/8W
R3	5010059	10 kohms $\pm 5\%$ 1/8W			
C1	4010041	10 nF -20+80% 40V	C2	4010041	10 nF -20+80% 40V
P44	7220131	Plug 4/3 pins			

Øvrige dele se side 3-8/Other parts, see page 3-8