

SET 488

PHOTOFACT® Folder



CHALLENGER
MODEL AC220

CHALLENGER
MODEL AC220



CHALLENGER
MODEL AC220

TRADE NAME	Challenger Model AC220		
MANUFACTURER	Bogen-Presto Co., A Div. of the Slegler Corp., P. O. Box 500, Paramus, N. J.		
TYPE SET	AC Operated 8 Tube Stereo Amplifier		
POWER SUPPLY	110-120 Volts AC, 60 Cycles	RATING	88 Watts, .8 Amp. @ 117 Volts AC

HOWARD W. SAMS & CO., INC. Indianapolis 6, Indiana



The listing of any available replacement part herein does not constitute in any case a recommendation, warranty or guaranty by Howard W. Sams & Co., Inc., as to the quality and suitability of such replacement part. The numbers of these parts have been compiled from information furnished to Howard W. Sams & Co., Inc., by the manufacturers of JV862

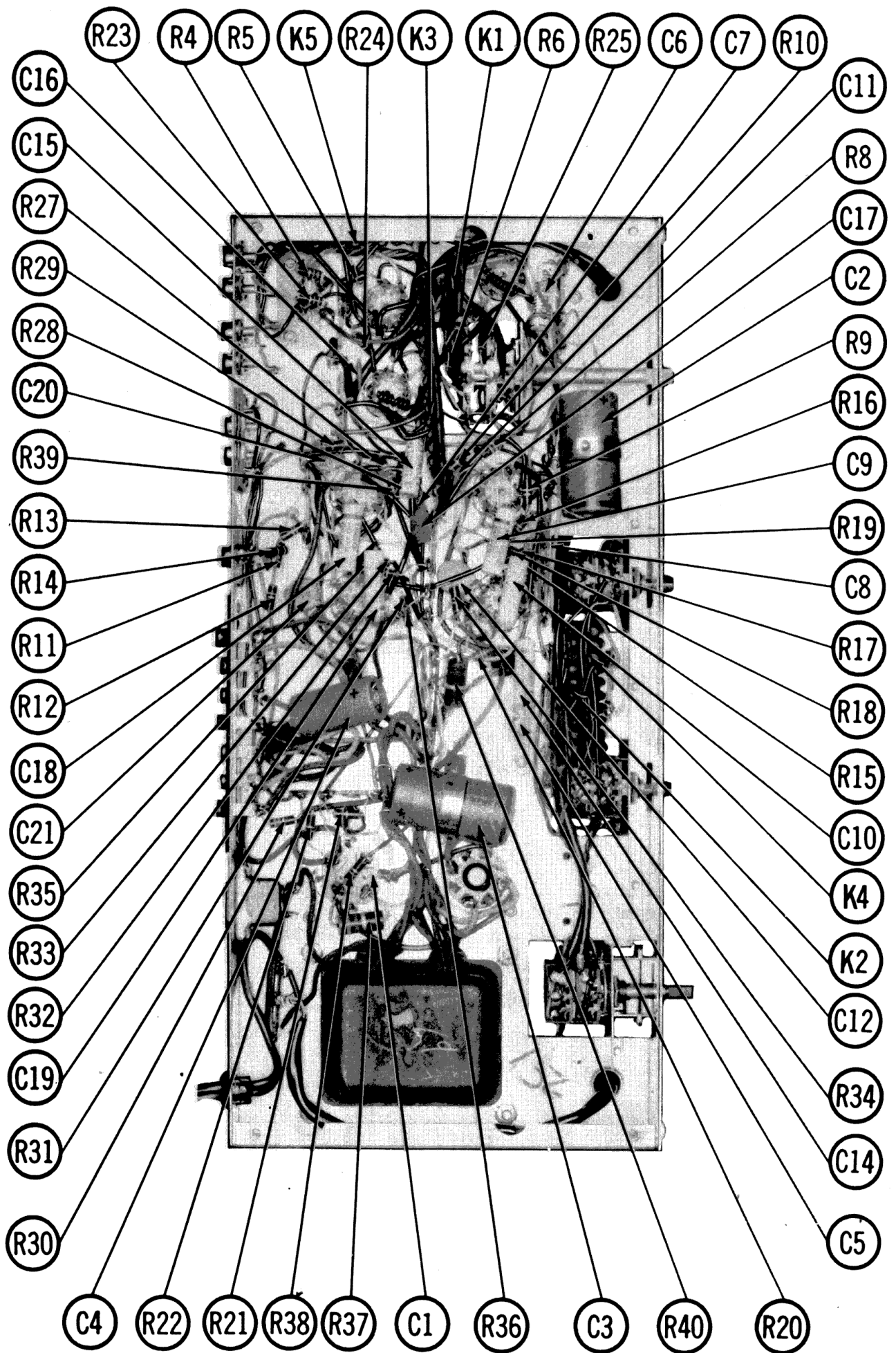
the particular type of replacement part listed. Reproduction or use, without express permission, of editorial or pictorial content, in any manner, is prohibited. No patent liability is assumed with respect to the use of the information contained herein. © 1960 Howard W. Sams & Co., Inc., Indianapolis 6, Indiana. Printed in U.S. of America

DATE 6-60

SET488

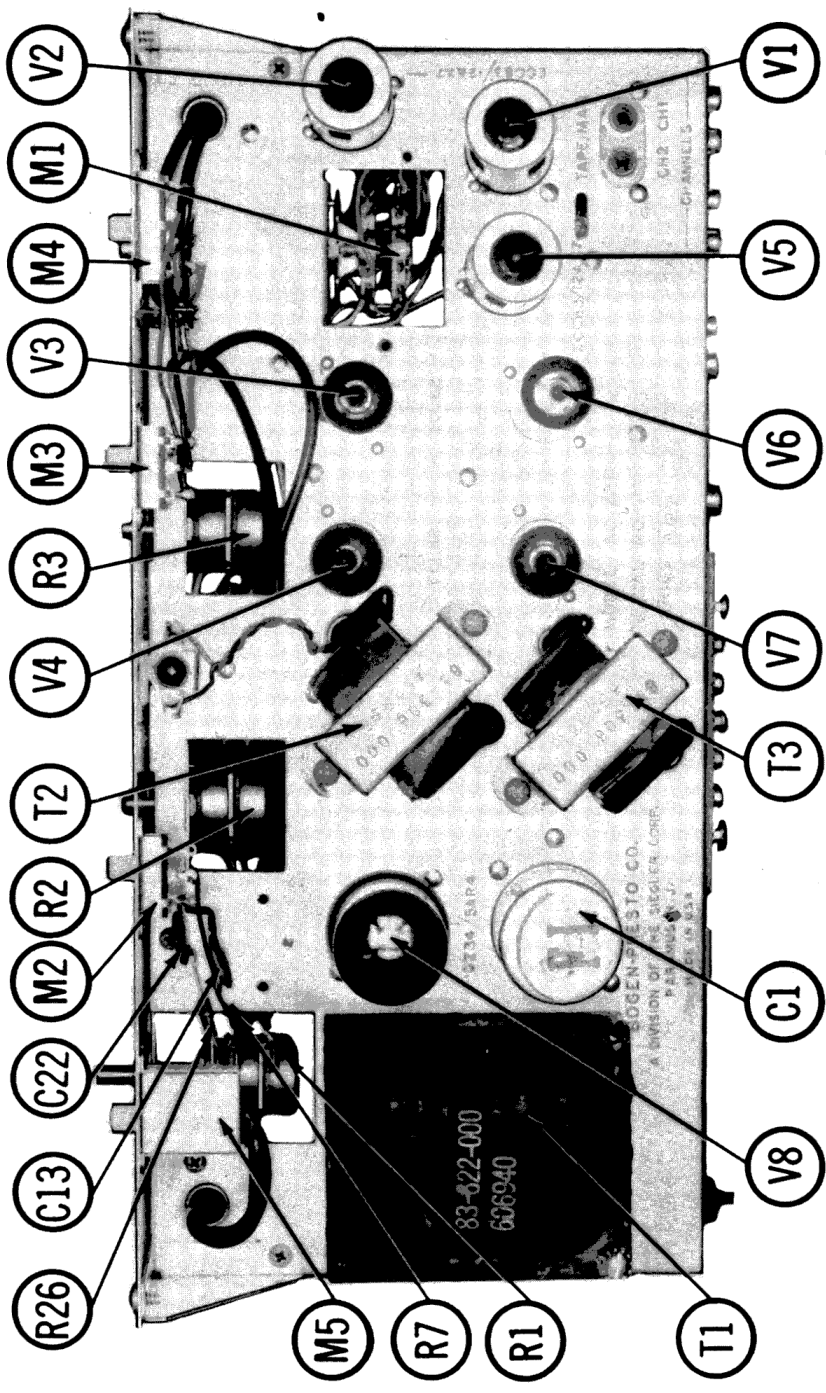
FOLDER 7

SET 488
FOLDER 7



CHASSIS BOTTOM VIEW

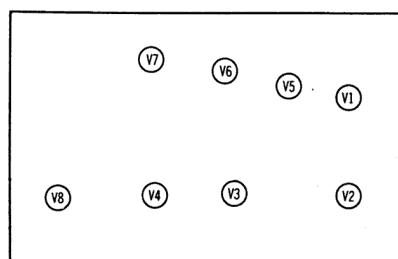
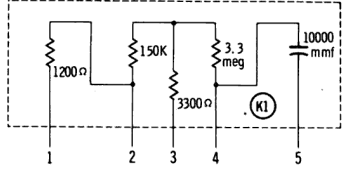
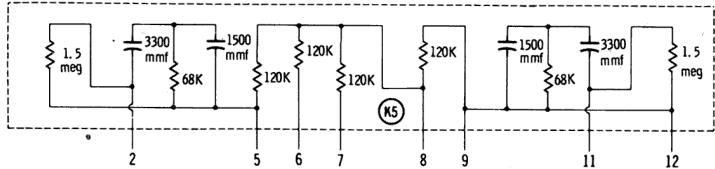
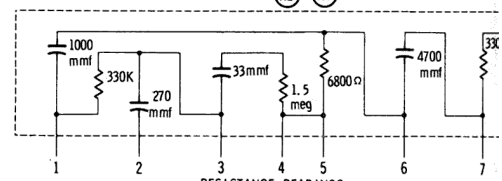
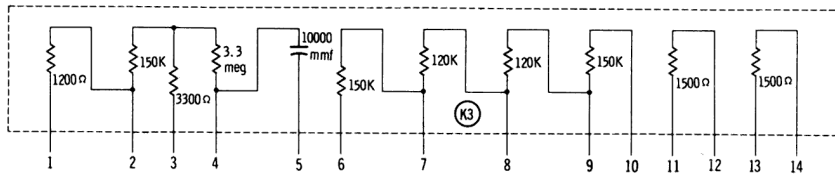
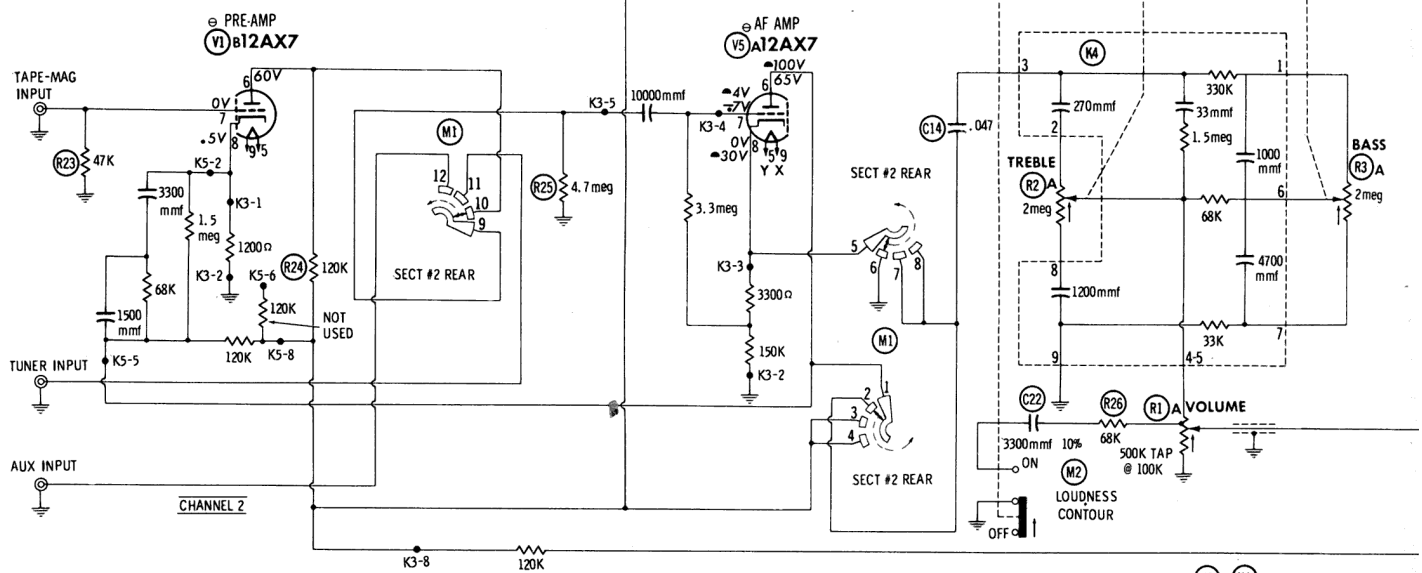
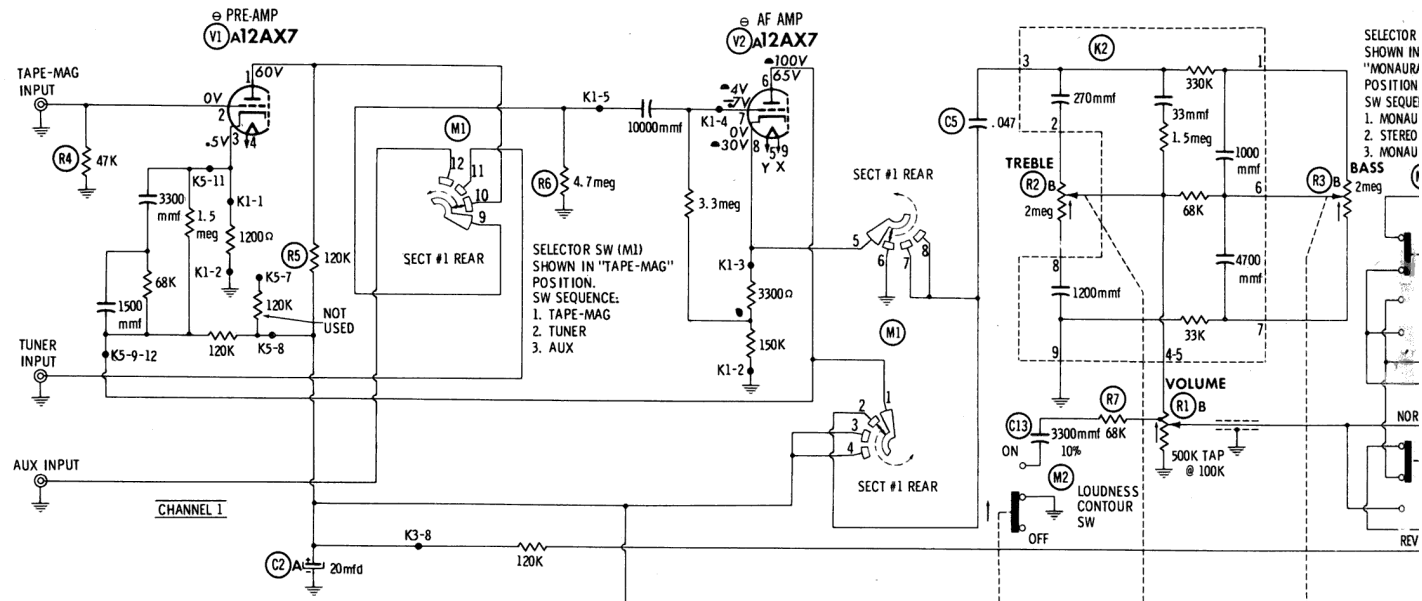
ECL82 ECL82 12AX7



ECL82 ECL82 12AX7 12AX7

GZ34

CHASSIS TOP VIEW



ITEM	TUBE	Pin 1	Pin 2	Pin 3	Pin 4	Pin 5	Pin 6	Pin 7
V1	12AX7	† 160K	47K	1200Ω	35Ω	22Ω	† 160K	47K
V2	12AX7	† 170K	0Ω	1500Ω	.2Ω	.2Ω	† 160K	3.4meg
V3	ECL82	470K	35Ω	680K	.2Ω	.2Ω	† 220Ω	† 180Ω
V4	ECL82	1.1meg	35Ω	680K	.2Ω	.2Ω	† 150Ω	† 180Ω
V5	12AX7	† 170K	0Ω	1500Ω	.2Ω	.2Ω	† 160K	3.4meg
V6	ECL82	470K	35Ω	680K	.2Ω	.2Ω	† 220Ω	† 180Ω
V7	ECL82	1.1meg	35Ω	680K	.2Ω	.2Ω	† 150Ω	† 180Ω
V8	GZ34 SAR4	NC	†	NC	90Ω	NC	85Ω	NC

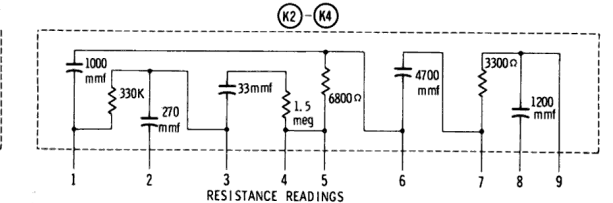
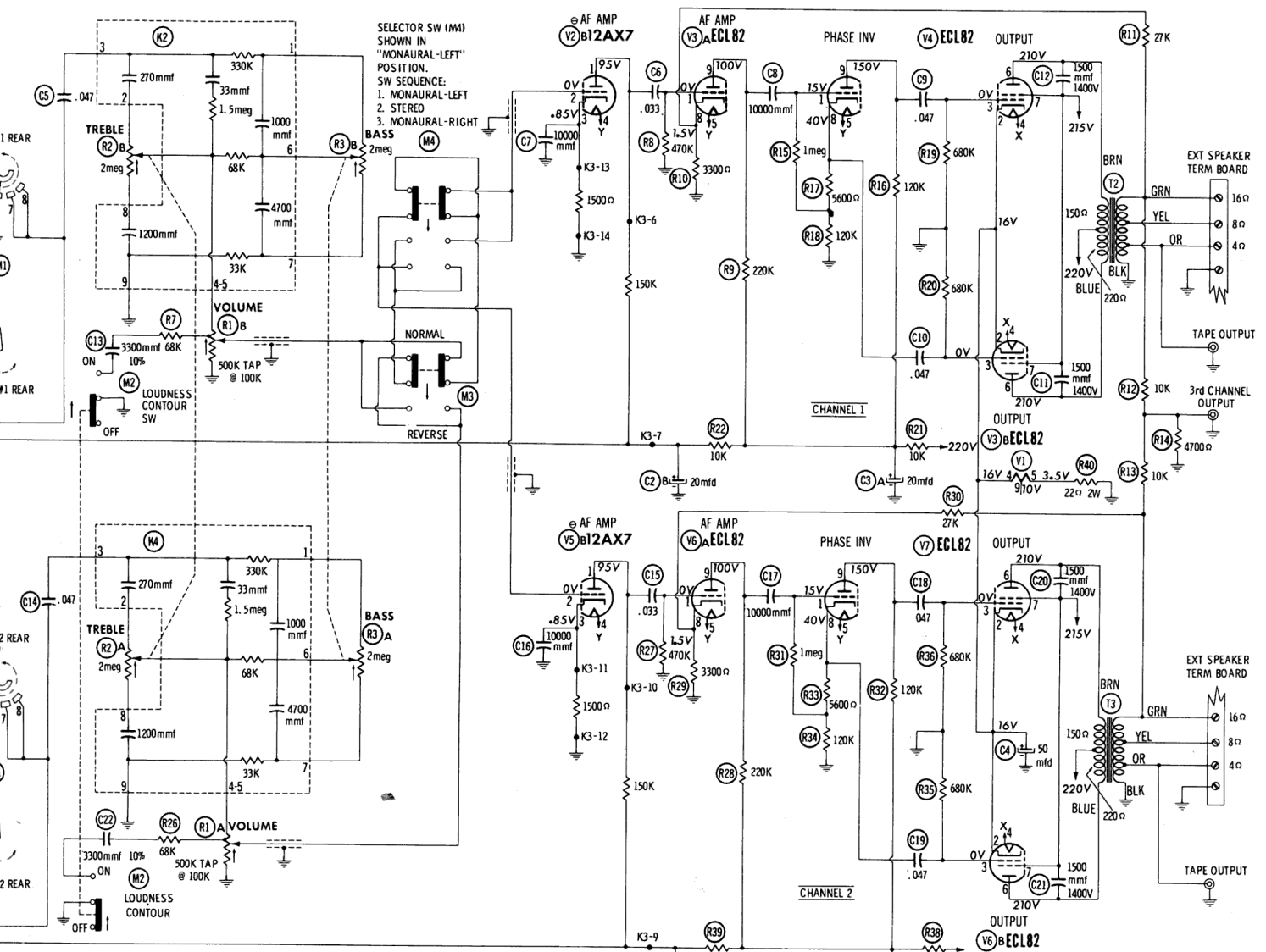
† THIS READING WILL VARY DEPENDING UPON THE CONDITION OF THE ELECTROLYTIC IN ALL MEASUREMENTS MADE IN TAPE-MAG POSITION. MEASURED IN TUNER OR AUX POSITION MEASURED FROM PIN 8 OF V5.

NC NO CONNECTION

SEE PARTS LIST FOR ALTERNATE VALUE OR APPLICATION

DC COIL RESISTANCE VALUES UNDER ONE OHM NOT SHOWN ON SCHEMATIC DIAGRAM

ARROWS ON CONTROLS INDICATE CLOCKWISE ROTATION (CONTROL VIEWED FROM SHAFT END)

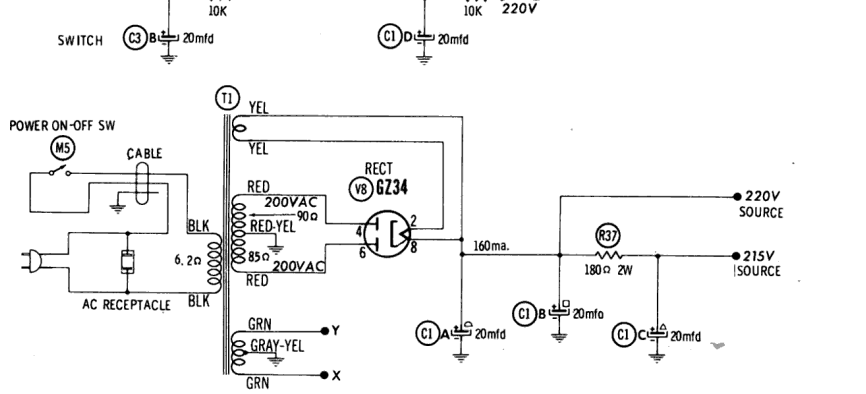


RESISTANCE READINGS

TUBE	Pin 1	Pin 2	Pin 3	Pin 4	Pin 5	Pin 6	Pin 7	Pin 8	Pin 9
12AX7	† 160K	47K	1200Ω	35Ω	22Ω	† 160K	47K	1200Ω	29Ω
12AX7	† 170K	0Ω	1500Ω	.2Ω	.2Ω	† 160K	3.4meg	150K	.2Ω
ECL82	470K	35Ω	680K	.2Ω	.2Ω	† 220Ω	† 180Ω	3300Ω	† 230K
ECL82	1.1meg	35Ω	680K	.2Ω	.2Ω	† 150Ω	† 180Ω	125K	† 130K
12AX7	† 170K	0Ω	1500Ω	.2Ω	.2Ω	† 160K	3.4meg	150K	.2Ω
ECL82	470K	35Ω	680K	.2Ω	.2Ω	† 220Ω	† 180Ω	3300Ω	† 230K
ECL82	1.1meg	35Ω	680K	.2Ω	.2Ω	† 150Ω	† 180Ω	125K	† 130K
GZ34	NC	†	NC	90Ω	NC	85Ω	NC	†	†

THIS READING WILL VARY DEPENDING UPON THE CONDITION OF THE ELECTROLYTIC IN THE CIRCUIT. ALL MEASUREMENTS MADE IN TAPE-MAG POSITION. MEASURED IN TUNER OR AUX POSITION MEASURED FROM PIN 8 OF V8.

NC NO CONNECTION
 ● SEE PARTS LIST FOR ALTERNATE VALUE OR APPLICATION
 DC COIL RESISTANCE VALUES UNDER ONE OHM NOT SHOWN ON SCHEMATIC DIAGRAM
 ARROWS ON CONTROLS INDICATE CLOCKWISE ROTATION (CONTROL VIEWED FROM SHAFT END)



- DC voltage measurements taken with vacuum tube voltmeter; AC voltages measured at 1000 ohms per volt.
- Socket connections are shown as bottom views.
- Measured values are from socket pin to common negative.
- Line voltage maintained at 117 volts for voltage readings.
- Nominal tolerance of component values makes possible a variation of ±15% in voltage and resistance readings.
- All controls at minimum, proper output load connected.