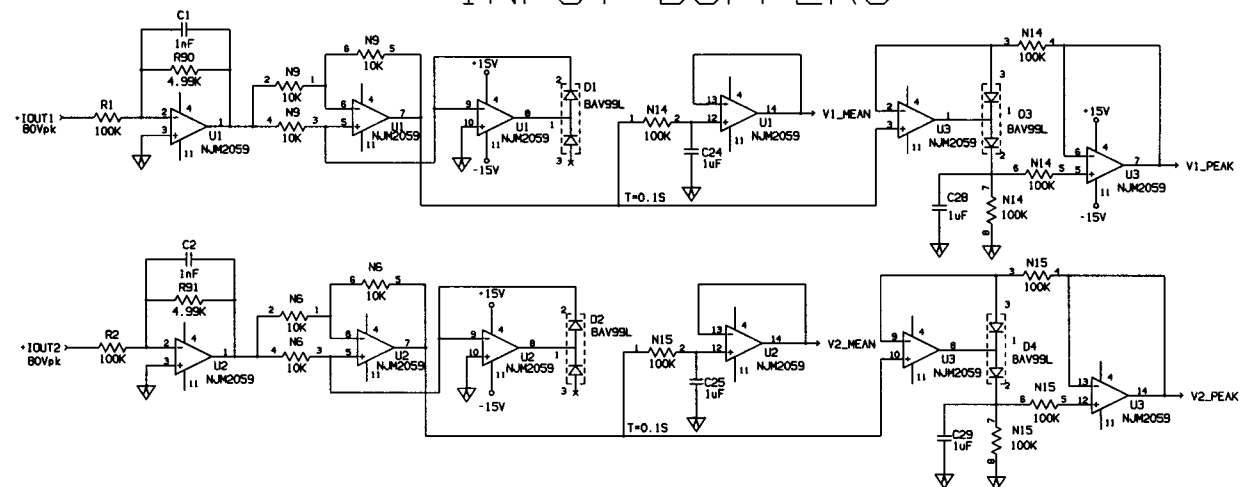
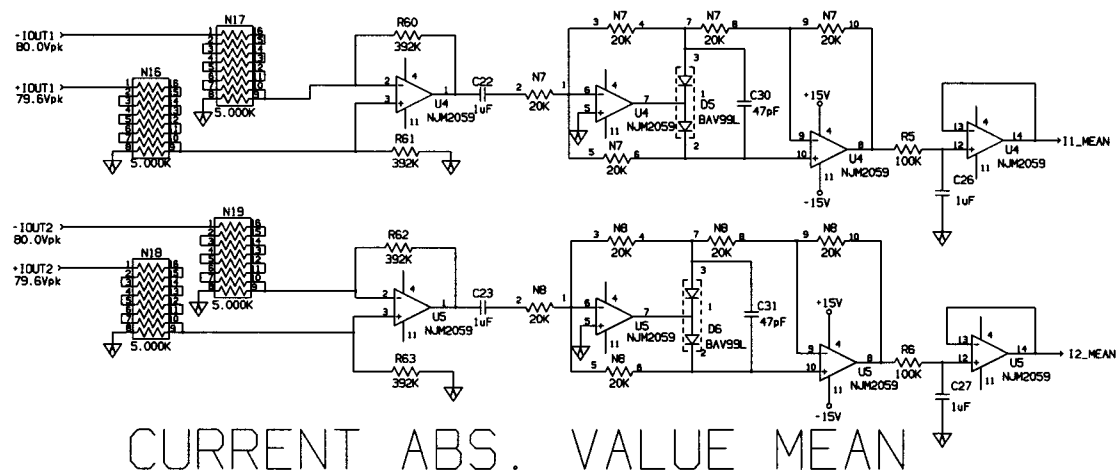


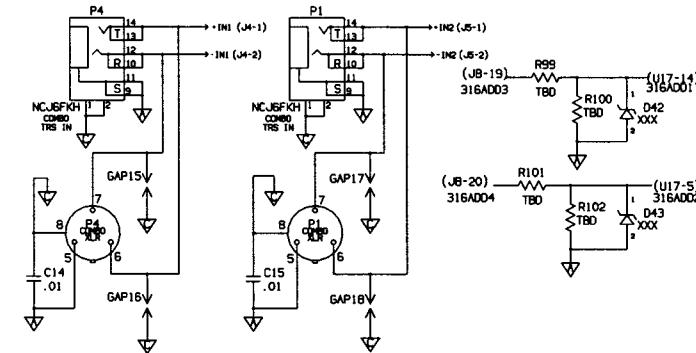
INPUT BUFFERS



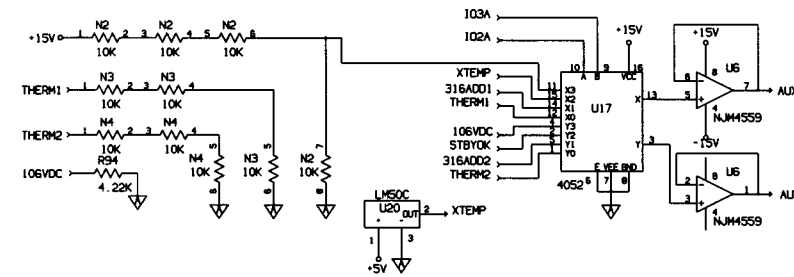
VOLTAGE ABS. VALUE MEAN PEAK



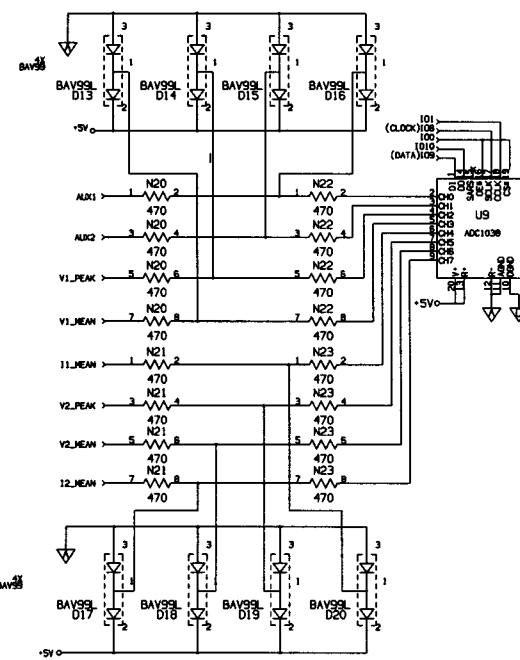
CURRENT ABS. VALUE MEAN



AUDIO INPUT JACKS



ADC MULTIPLEXOR



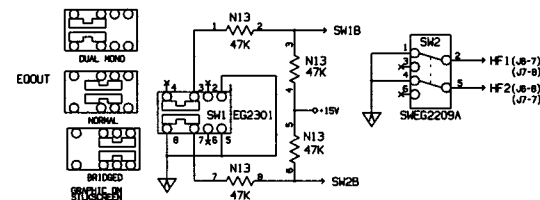
SERIAL 10-BIT ADC

- NOTES:
- UNLESS OTHERWISE SPECIFIED:
 - 1) ALL RESISTORS ARE EXPRESSED IN OHMS AND ARE 1/10W.
 - 2) ALL CAPACITORS ARE EXPRESSED IN MICROFARADS.
 - 3) ALL NON-POLARIZED CAPACITORS ARE CERAMIC 0805 TYPE CHIPS.
 - 4) ALL POLARIZED CAPACITORS ARE ELECTROLYTICS, 25V UNLESS OTHERWISE SPECIFIED.
 - 5) ALL TP### DESIGNATORS FOUND ON THIS DOCUMENT REFER TO BOSE IN-CIRCUIT TESTING NODES.
 - 6) Ⓢ DENOTES COMPONENT SIDE TEST POINT FOR REPAIR PURPOSES.
 - 7) ALL M### DESIGNATORS FOUND ON THIS DOCUMENT REFER TO BOSE FUNCTIONAL TESTING NODES.
 - 8) R46, R48, C72 AND C73 NOT USED.
 - 9) DC INPUT: 15 VDC, I=800mA (NOMINAL) ADAPTER TYPE
AC INPUT: 12 V(rms), I=1.2A (NOMINAL) ADAPTER TYPE
RECOMMENDED ADAPTER TYPE: BOSE MODEL P571/P N 178371 (ADAPTER)
 - 10) I07 - ENABLE
I08 - CLOCK
I09 - DATA
 - 11) C41 IS NOT STUFFED.
 - 12) ADD V-IN TO INPUT TERMINAL.
- ⚠ DENOTES CRITICAL SAFETY CONTROLLED COMPONENTS.
REPLACE ONLY WITH IDENTICAL BOSE PARTS.

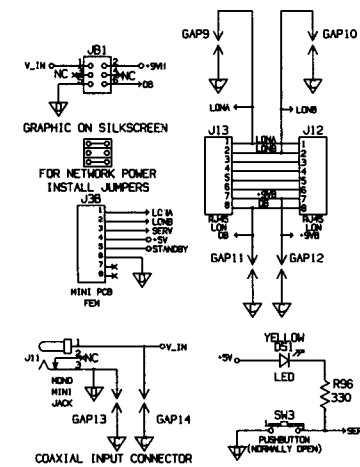
SAFETY CONTROLLED

BOSE
FRAMINGHAM, MA 01701-9168

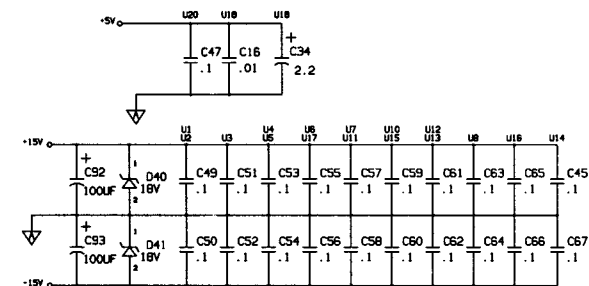
ACM-1
Amplifier Control Module
PCB P/N: 190911
Sheet 1 of 2



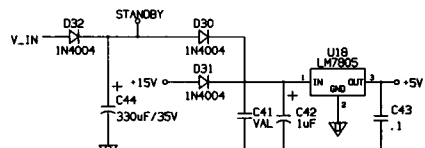
MODE SWITCH



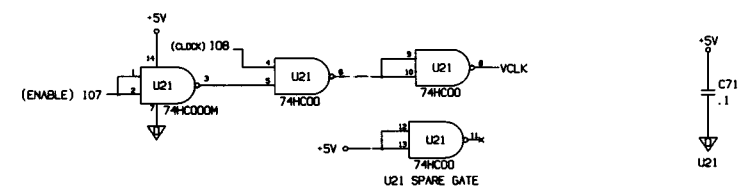
MINI PCB



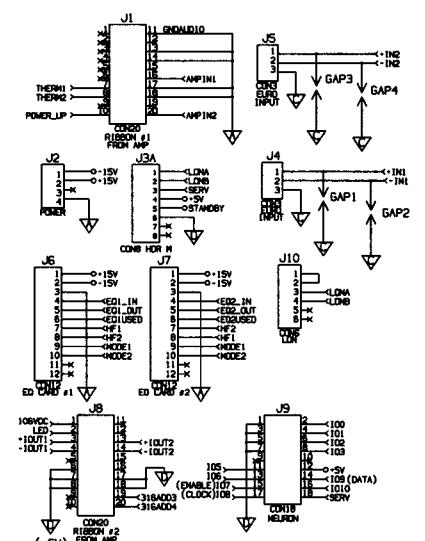
DECOUPLING



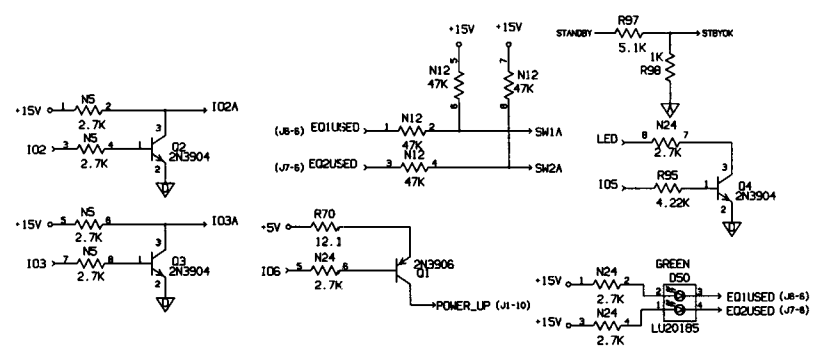
5V REGULATORS



CLOCK LOGIC



CONNECTORS



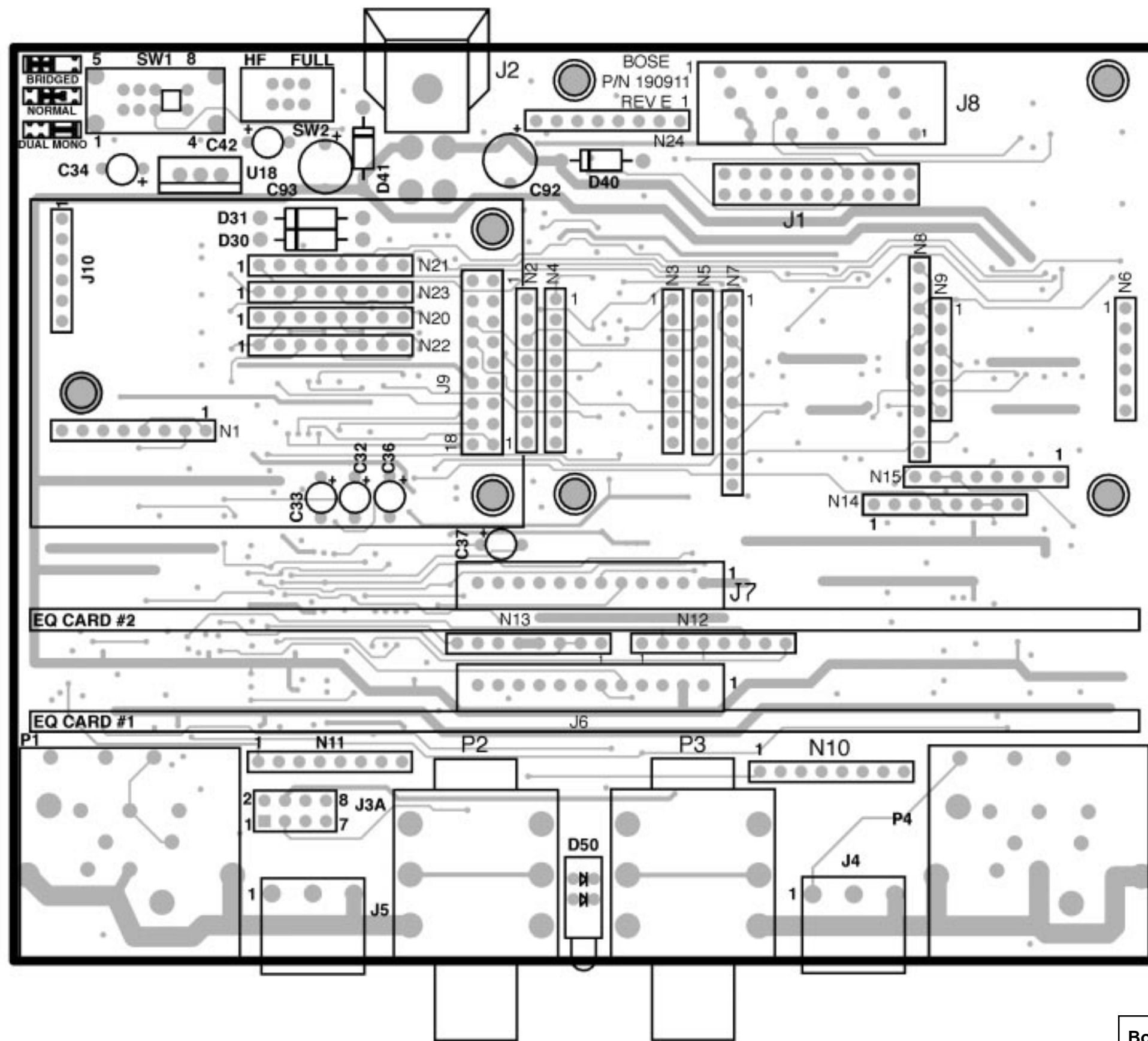
MISC CIRCUITS

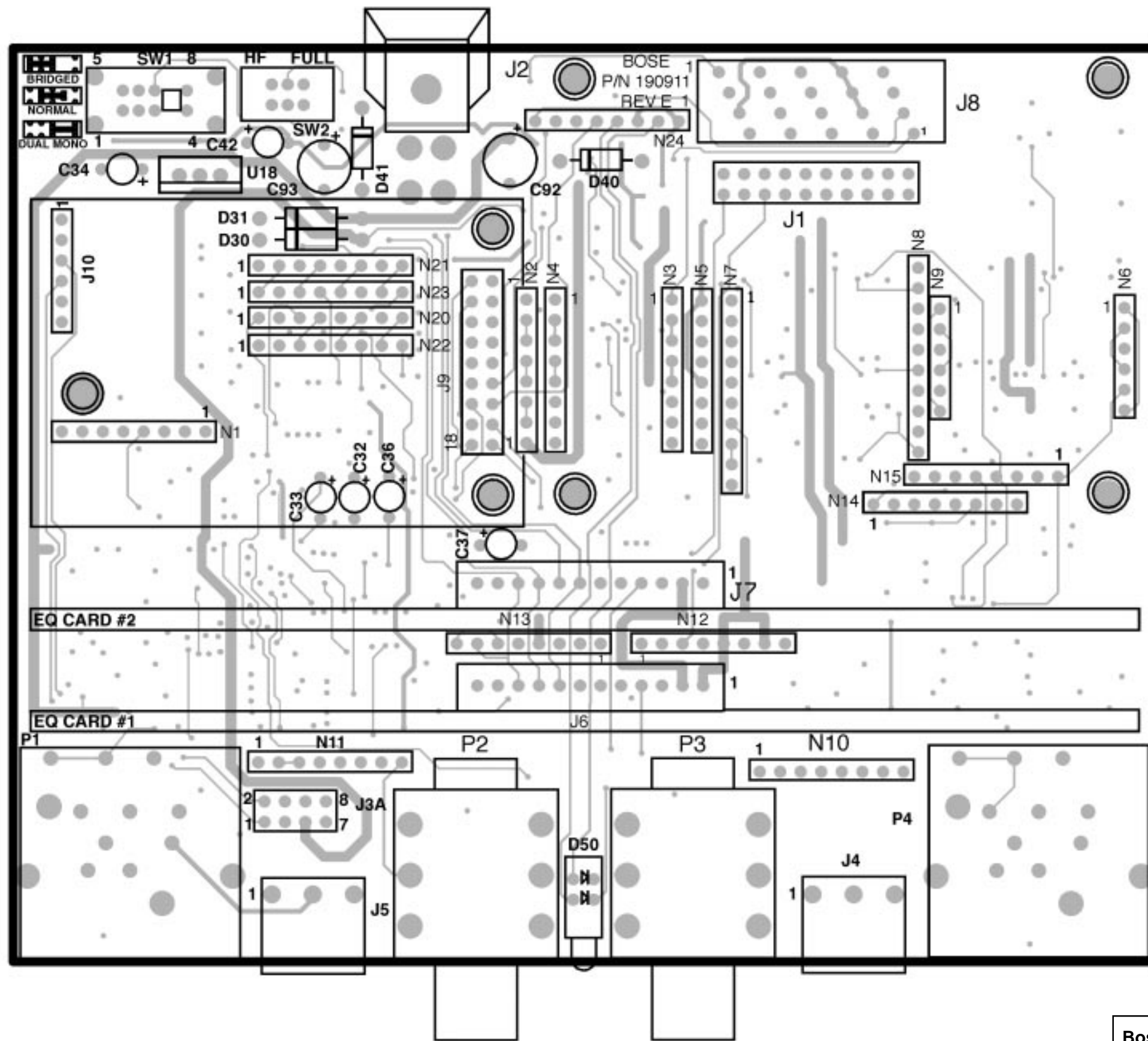
- NOTES:
- UNLESS OTHERWISE SPECIFIED:
 - 1) ALL RESISTORS ARE EXPRESSED IN OHMS AND ARE 1/10W.
 - 2) ALL CAPACITORS ARE EXPRESSED IN MICROFARADS.
 - 3) ALL NON-POLARIZED CAPACITORS ARE CERAMIC 0805 TYPE CHIPS.
 - 4) ALL POLARIZED CAPACITORS ARE ELECTROLYTICS, 25V UNLESS OTHERWISE SPECIFIED.
 - 5) ALL TP### DESIGNATORS FOUND ON THIS DOCUMENT REFER TO BOSE IN-CIRCUIT TESTING NODES.
 - 6) ⚡ DENOTES COMPONENT SIDE TEST POINT FOR REPAIR PURPOSES
 - 7) ALL M### DESIGNATORS FOUND ON THIS DOCUMENT REFER TO BOSE FUNCTIONAL TESTING NODES.
 - 8) R46, R48, C72 AND C73 NOT USED.
 - 9) DC INPUT: 15 VDC, I=800mA (NOMINAL) ADAPTER TYPE AC INPUT: 12 V(rms), I=1.2A (NOMINAL) ADAPTER TYPE RECOMMENDED ADAPTER TYPE BOSE MODEL P571/ P N 178371 (ADAPTER)
 - 10) I07 - ENABLE I08 - CLOCK I09 - DATA
 - 11) C41 IS NOT STUFFED.
 - 12) ADD V_IN TO INPUT TERMINAL
- ⚠ DENOTES CRITICAL SAFETY CONTROLLED COMPONENTS. REPLACE ONLY WITH IDENTICAL BOSE PARTS.

SAFETY CONTROLLED

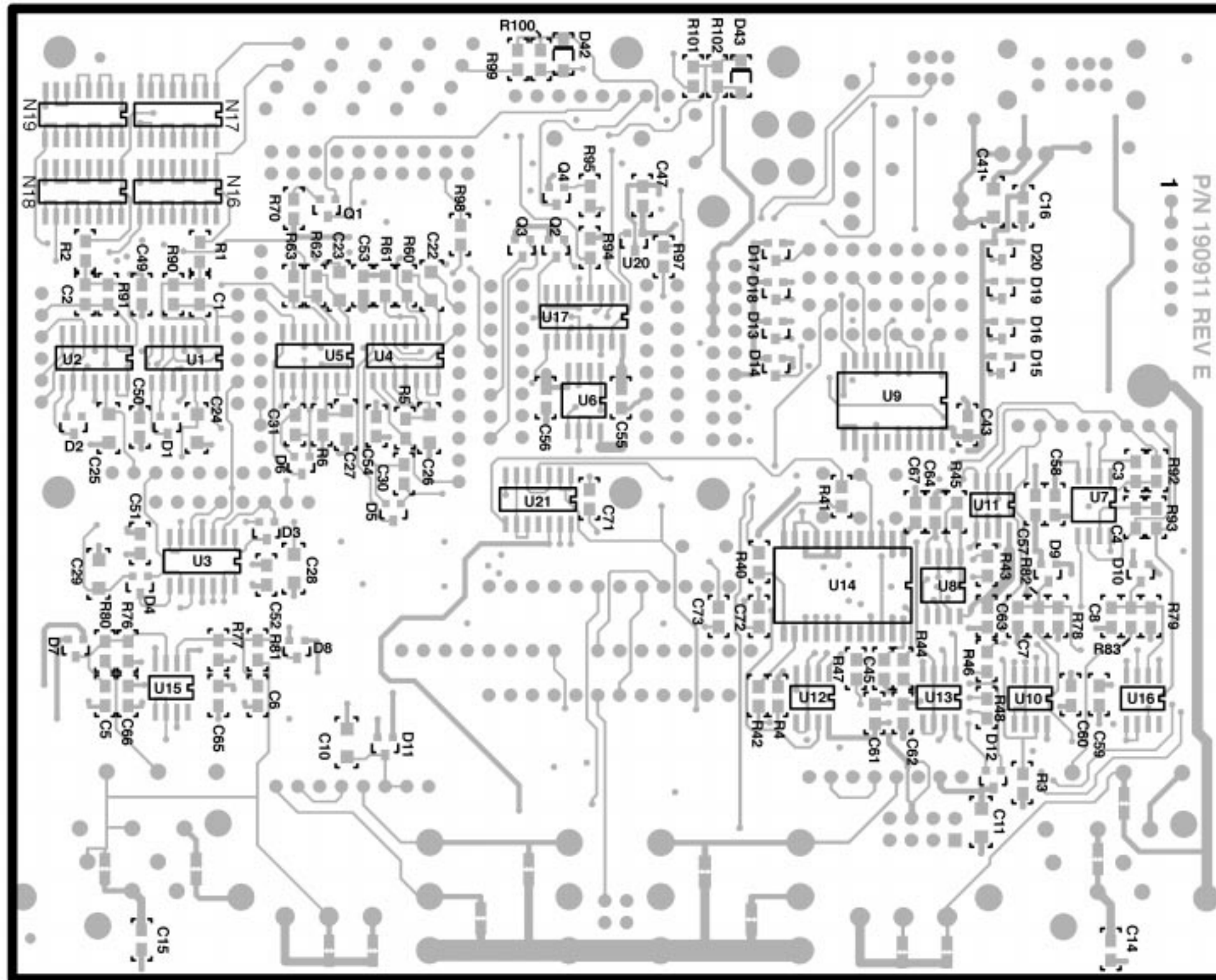
BOSE
FRAMINGHAM, MA 01701-9168

ACM-1
Amplifier Control Module
PCB P/N: 190911
Sheet 2 of 2





Bose® ACM-1 Amplifier Control Module
 Motherboard PCB Internal Etch and
 Component Layout Diagram



Bose® ACM-1 Amplifier Control Module
 Motherboard PCB SMD Etch and
 Component Layout Diagram