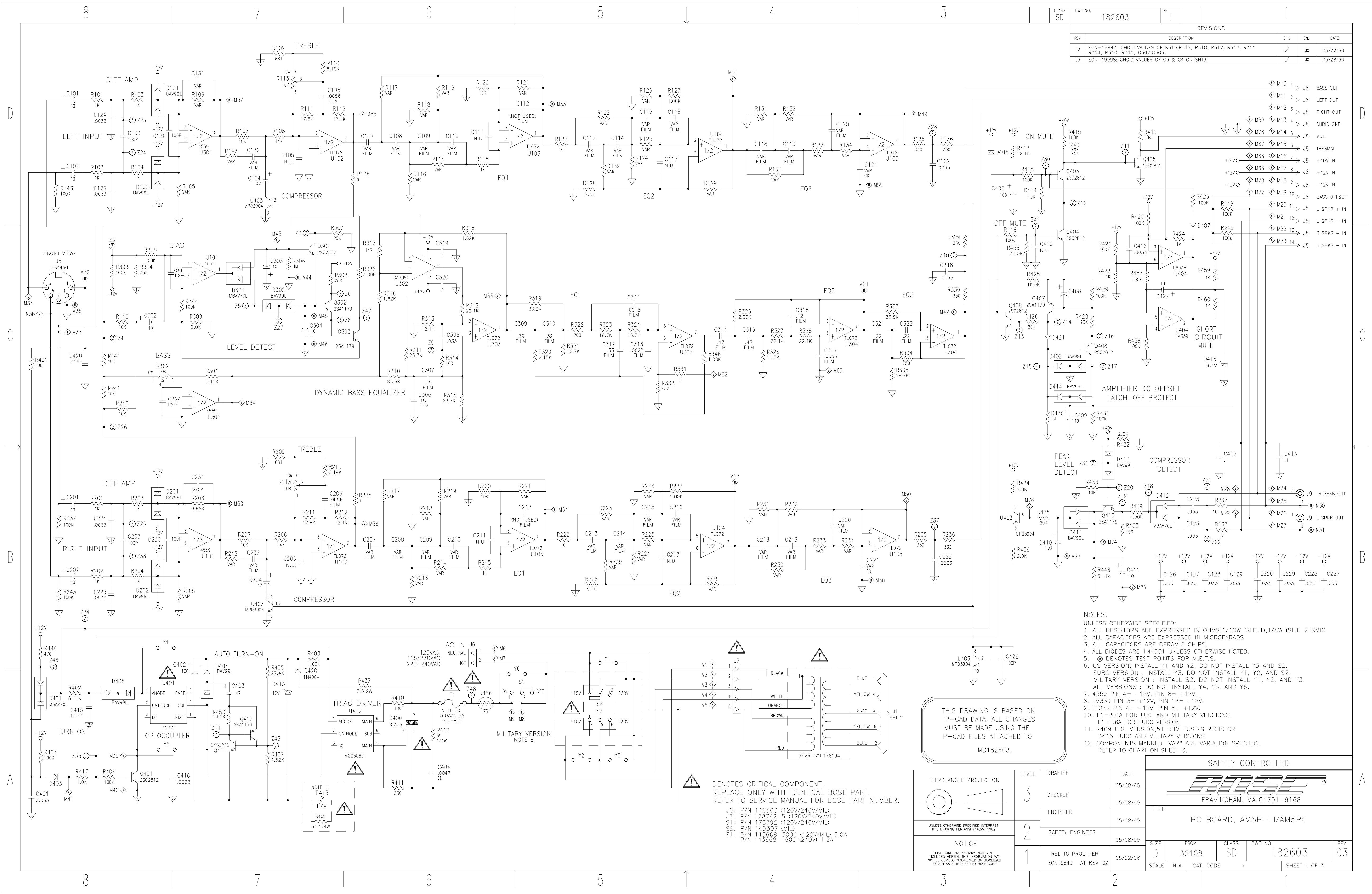


REVISIONS				
REV	DESCRIPTION	CHK	ENG	DATE
02	ECN-19843: CHG'D VALUES OF R316,R317, R318, R312, R313, R311 R314, R310, R315, C307,C306.	✓	MC	05/22/96
03	ECN-19998: CHG'D VALUES OF C3 & C4 ON SHT3.	✓	MC	05/28/96



- NOTES:  
UNLESS OTHERWISE SPECIFIED:
1. ALL RESISTORS ARE EXPRESSED IN OHMS. 1/10W (SHT.1), 1/8W (SHT. 2 SMD)
  2. ALL CAPACITORS ARE EXPRESSED IN MICROFARADS.
  3. ALL DIODES ARE 1N4351 UNLESS OTHERWISE NOTED.
  4. ALL DIODES ARE 1N4351 UNLESS OTHERWISE NOTED.
  5. Ⓞ DENOTES TEST POINTS FOR M.E.T.S.
  6. US VERSION: INSTALL Y1 AND Y2. DO NOT INSTALL Y3 AND S2. EURO VERSION : INSTALL S2. DO NOT INSTALL Y1, Y2, AND S2. MILITARY VERSION : INSTALL S2. DO NOT INSTALL Y1, Y2, AND Y3. ALL VERSIONS : DO NOT INSTALL Y4, Y5, AND Y6.
  7. 4559 PIN 4 = -12V, PIN 8 = +12V.
  8. LM339 PIN 3 = +12V, PIN 12 = -12V.
  9. TL072 PIN 4 = -12V, PIN 8 = +12V.
  10. F1=3.0A FOR U.S. AND MILITARY VERSIONS. F1=1.6A FOR EURO VERSION
  11. R409 U.S. VERSION, 51 OHM FUSING RESISTOR D415 EURO AND MILITARY VERSIONS
  12. COMPONENTS MARKED "VAR" ARE VARIATION SPECIFIC. REFER TO CHART ON SHEET 3.

THIS DRAWING IS BASED ON P-CAD DATA. ALL CHANGES MUST BE MADE USING THE P-CAD FILES ATTACHED TO MD182603.

⚠ DENOTES CRITICAL COMPONENT. REPLACE ONLY WITH IDENTICAL BOSE PART. REFER TO SERVICE MANUAL FOR BOSE PART NUMBER.

- J6: P/N 146563 (120V/240V/MIL)  
 J7: P/N 178742-5 (120V/240V/MIL)  
 S1: P/N 178792 (120V/240V/MIL)  
 S2: P/N 145307 (MIL)  
 F1: P/N 143668-3000 (120V/MIL) 3.0A  
 P/N 143668-1600 (240V) 1.6A

LEVEL	DRAFTER	DATE
3		05/08/95
2		05/08/95
1		05/22/96

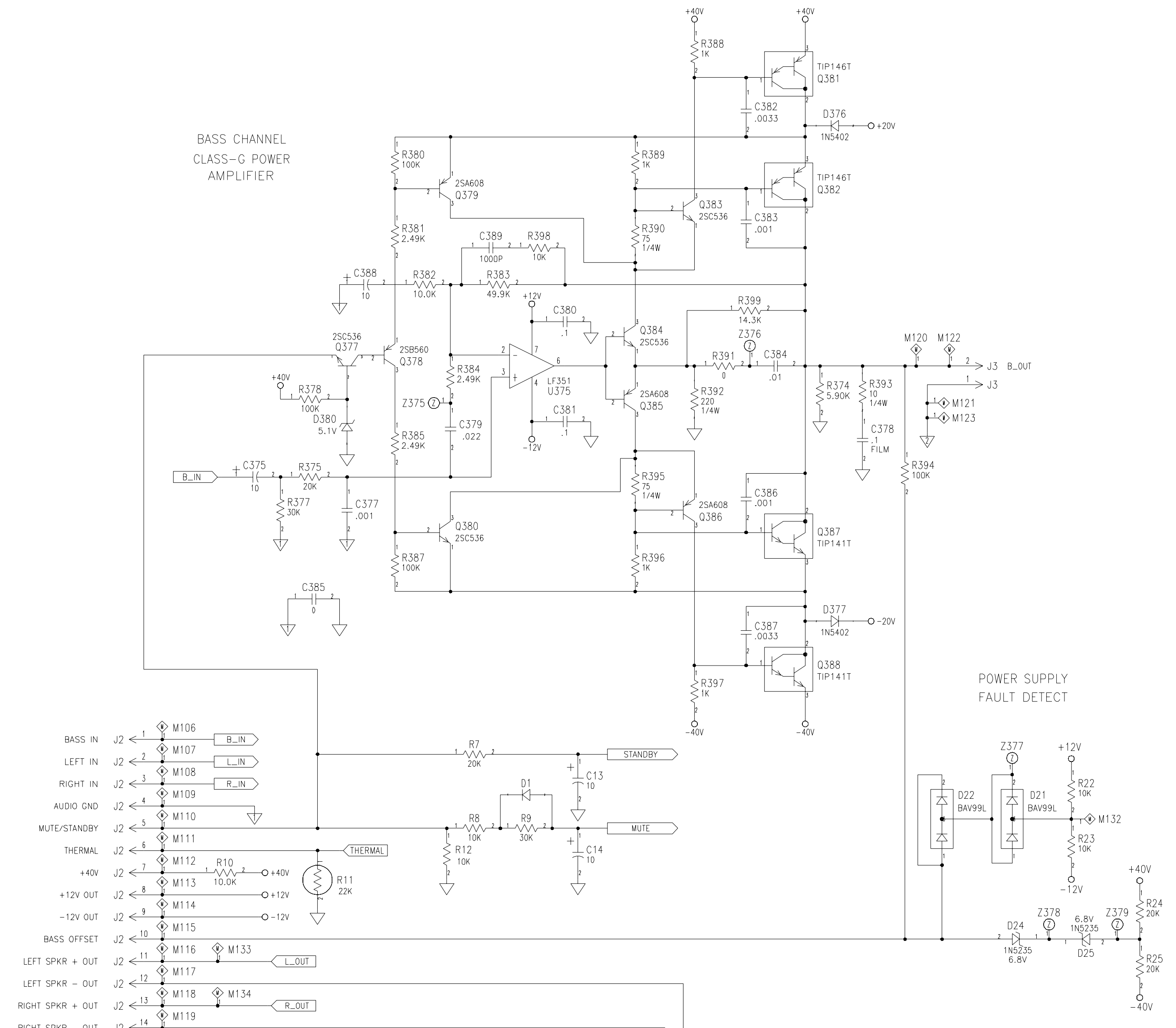
SAFETY CONTROLLED

**BOSE**  
FRAMINGHAM, MA 01701-9168

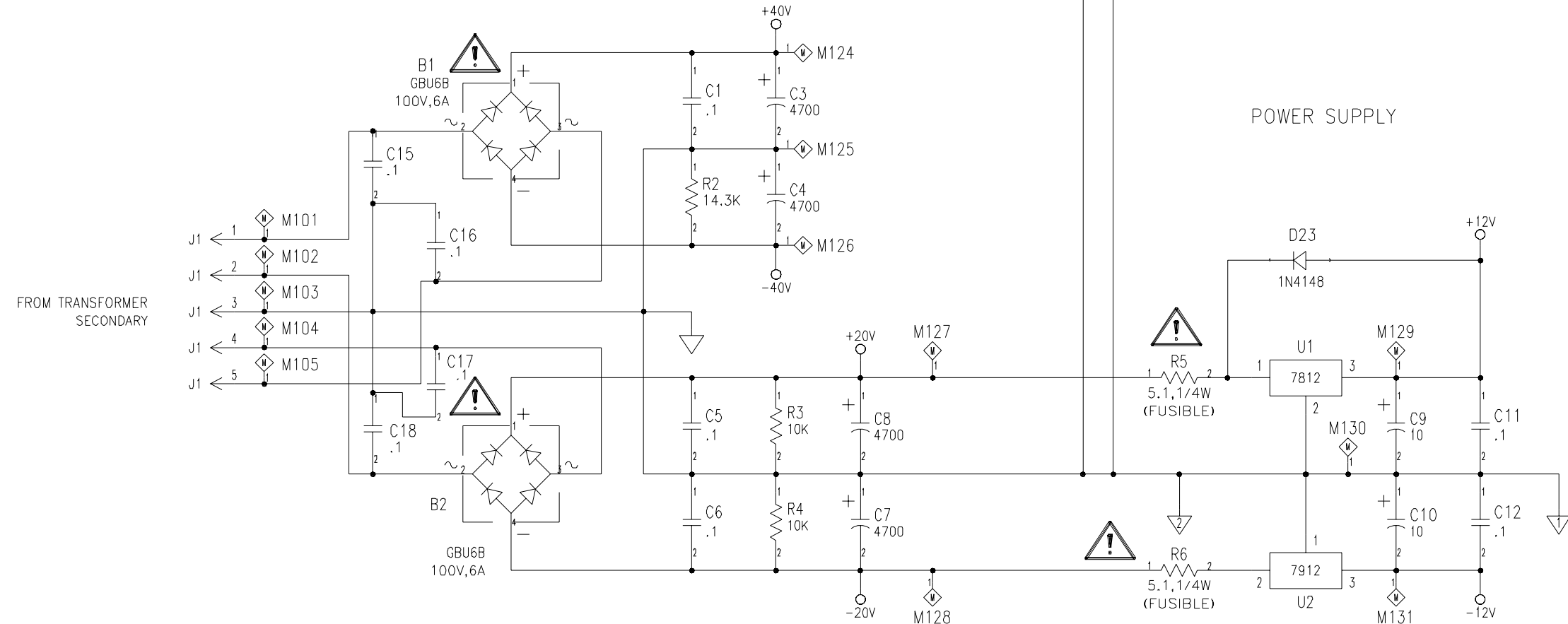
TITLE  
PC BOARD, AM5P-III/AM5PC

SIZE	FSCM	CLASS	DWG NO.	REV
D	32108	SD	182603	03
SCALE	N A	CAT. CODE	SHEET 1 OF 3	

BASS CHANNEL  
CLASS-G POWER  
AMPLIFIER

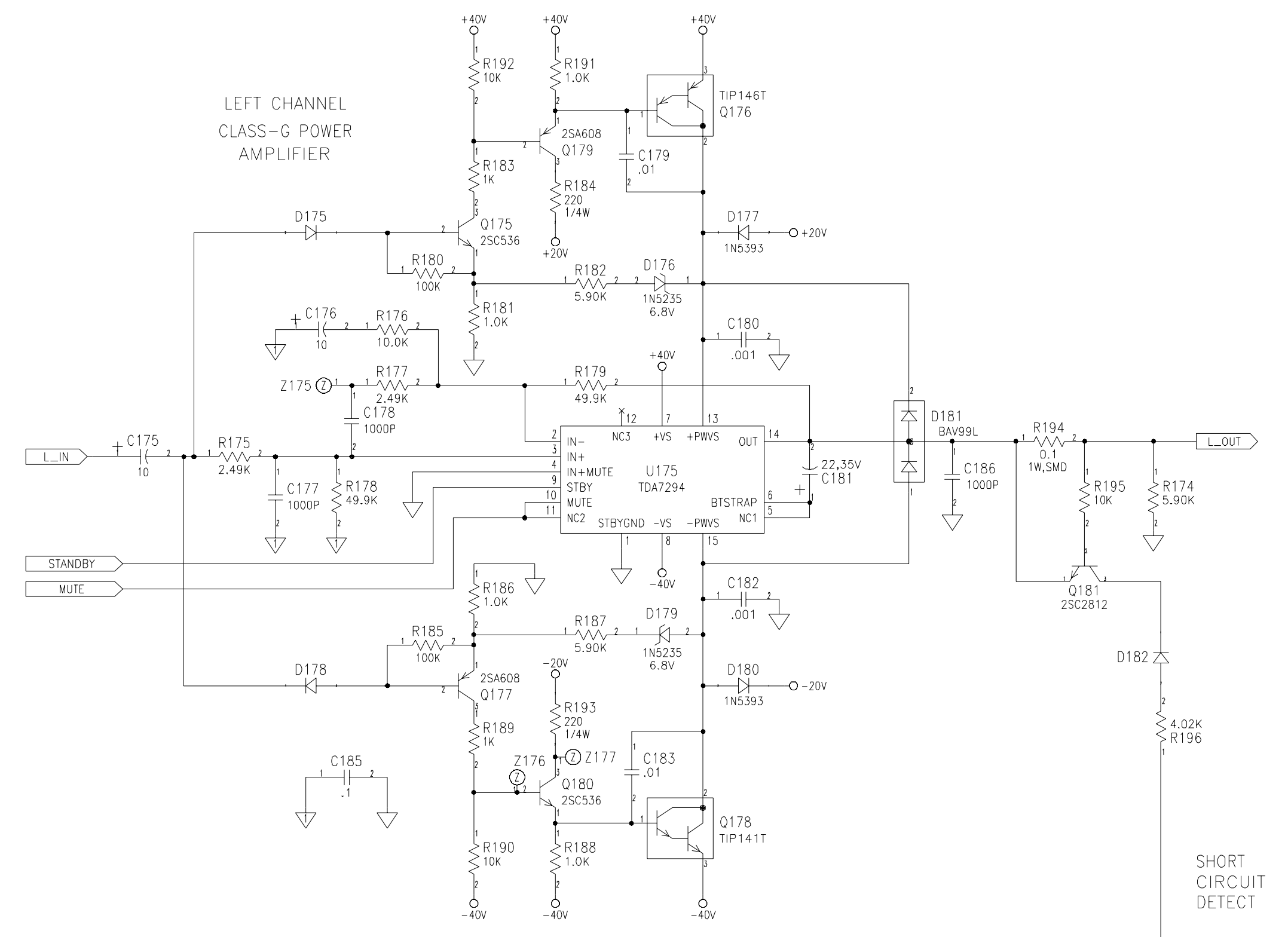


- BASS IN J2 1 M106 B\_IN
- LEFT IN J2 2 M107 L\_IN
- RIGHT IN J2 3 M108 R\_IN
- AUDIO GND J2 4 M109
- MUTE/STANDBY J2 5 M110
- THERMAL J2 6 M111 THERMAL
- +40V J2 7 M112 R10 10.0K
- +12V OUT J2 8 M113
- 12V OUT J2 9 M114
- BASS OFFSET J2 10 M115
- LEFT SPKR + OUT J2 11 M116 M133 L\_OUT
- LEFT SPKR - OUT J2 12 M117
- RIGHT SPKR + OUT J2 13 M118 M134 R\_OUT
- RIGHT SPKR - OUT J2 14 M119

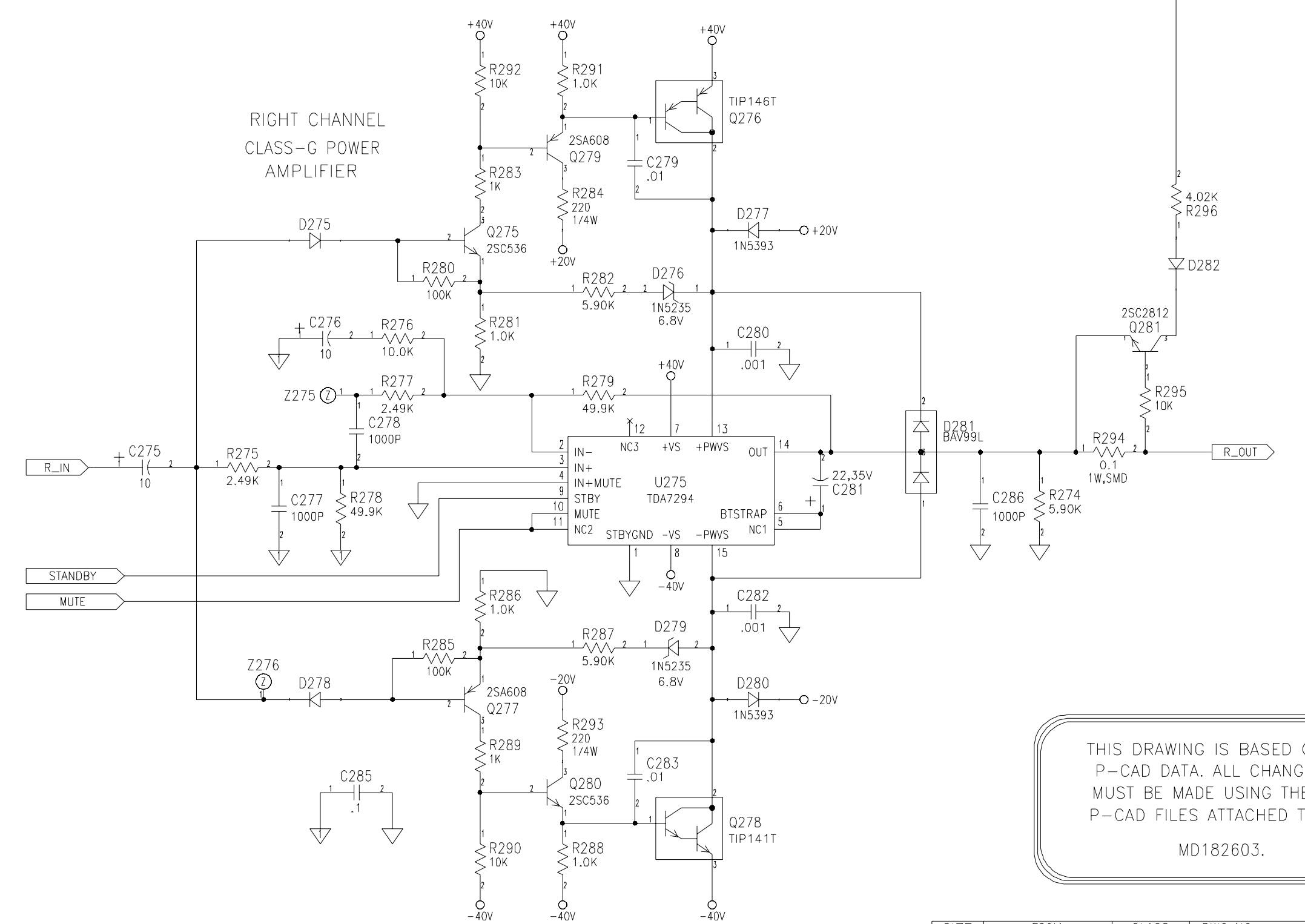


POWER SUPPLY

LEFT CHANNEL  
CLASS-G POWER  
AMPLIFIER



RIGHT CHANNEL  
CLASS-G POWER  
AMPLIFIER



THIS DRAWING IS BASED ON P-CAD DATA. ALL CHANGES MUST BE MADE USING THE P-CAD FILES ATTACHED TO MD182603.

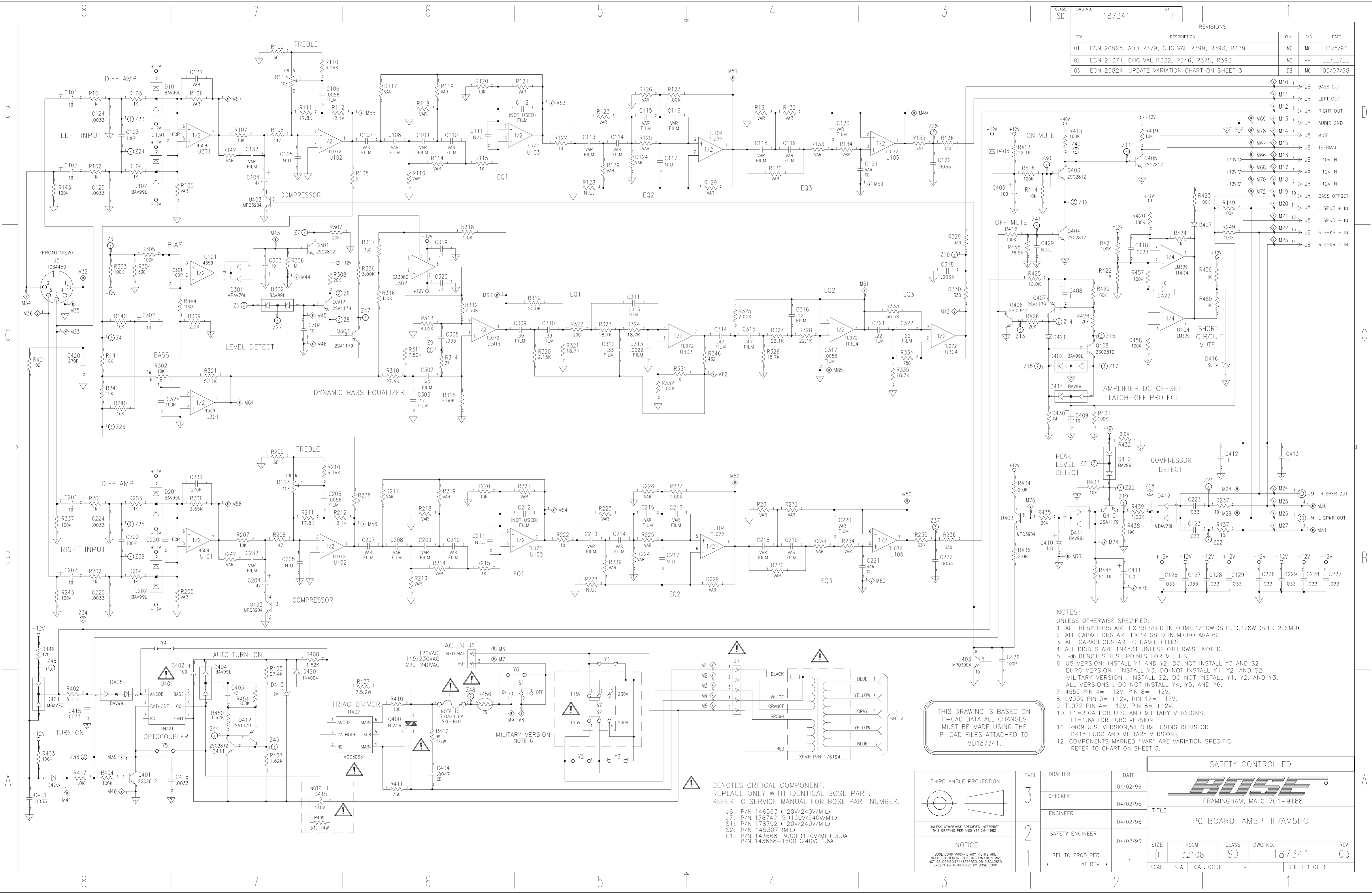
SIZE D	FSCM 32108	CLASS SD	DWG NO. 182603	REV 03
SCALE	CAT. CODE	SHEET 2 OF 3		

COMPONENT VALUE VARIATION CHART

COMPONENT	AM-5PIII	AM-5PC
C106, C206	.0082uF	.0056uF
C107, C207	.12uF	.082uF
C108, C208	.12uF	.082uF
C109, C209	.027uF	.047uF
C110, C210	.027uF	.047uF
C113, C213	.027uF	.015uF
C114, C214	.027uF	.015uF
C115, C215	.082uF	.0068uF
C116, C216	.082uF	.0068uF
C118, C218	.047uF	.068uF
C119, C219	.047uF	.068uF
C120, C220	.0082uF	.0047uF
C121, C221	.0022uF	270pF
C124, C224	.0033uF	OPEN
C125, C225	.0033uF	OPEN
C131, C231	270pF	100pF
C132, C232	OPEN	.0018uF
R105, R205	3.65K	7.32K
R106, R206	3.65K	7.32K
R108, R208	147 OHM	147 OHM
R114, R214	7.50K	22.1K
R116, R216	7.15K	51.1K
R117, R217	6.81K	1.50K
R118, R218	1.00K	121K
R119, R219	1.21K	2.00K
R121, R221	10.0K	JUMPER
R123, R223	16.9K	73.2K
R124, R224	13.3K	27.4K
R125, R225	10.0K	14.7K
R126, R226	36.5K	OPEN
R127, R227	1.00K	5.11K
R128, R228	OPEN	2.43K
R129, R229	10 OHM	340 OHM
R130, R230	5.11K	1.30K
R131, R231	OPEN	1.00K
R132, R232	196 OHM	1.50K
R133, R233	2.26K	10.0K
R134, R234	2.26K	10.0K
R139, R239	1.00K	1.50K
R142, R242	OPEN	10.0K
R111, R211	12.1K	17.8K
R112, R212	8.25K	12.1K

THIS DRAWING IS BASED ON  
P-CAD DATA. ALL CHANGES  
MUST BE MADE USING THE  
P-CAD FILES ATTACHED TO  
MD182603.

CLASS	DWG NO.	SW	1	1
SD	187341			
REVISIONS				
REV	DESCRIPTION	CHK	ENG	DATE
01	ECN 20928: ADD R379, CHG VAL R399, R393, R439	MC	MC	11/5/96
02	ECN 21371: CHG VAL R332, R346, R375, R393	MC	MC	---
03	ECN 23824: UPDATE VARIATION CHART ON SHEET 3	DB	MC	05/07/98

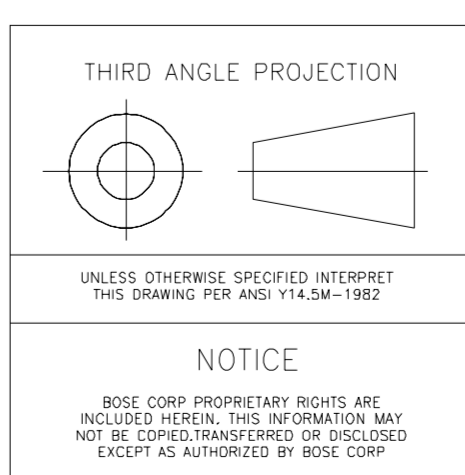


- NOTES:
- UNLESS OTHERWISE SPECIFIED: ALL RESISTORS ARE EXPRESSED IN OHMS, 1/10W (SHT.1), 1/8W (SHT. 2 SMD)
  - ALL CAPACITORS ARE EXPRESSED IN MICROFARADS.
  - ALL CAPACITORS ARE CERAMIC CHIPS.
  - ALL DIODES ARE 1N4531 UNLESS OTHERWISE NOTED.
  - ⊕ DENOTES TEST POINTS FOR M.E.T.S.
  - US VERSION: INSTALL Y1 AND Y2. DO NOT INSTALL Y3 AND S2. EURO VERSION: INSTALL Y3. DO NOT INSTALL Y1, Y2, AND S2. MILITARY VERSION: INSTALL S2. DO NOT INSTALL Y1, Y2, AND Y3. ALL VERSIONS: DO NOT INSTALL Y4, Y5, AND Y6.
  - 4559 PIN 4 = -12V, PIN 8 = +12V.
  - LM339 PIN 3 = +12V, PIN 12 = -12V.
  - TL072 PIN 4 = -12V, PIN B = +12V.
  - F1=3.0A FOR U.S. AND MILITARY VERSIONS.
  - F1=1.6A FOR EURO VERSION
  - R419 U.S. VERSION: 51 OHM FUSING RESISTOR
  - D419 EURO AND MILITARY VERSIONS
  - COMPONENTS MARKED "VAR" ARE VARIATION SPECIFIC. REFER TO CHART ON SHEET 3.

THIS DRAWING IS BASED ON P-CAD DATA ALL CHANGES MUST BE MADE USING THE P-CAD FILES ATTACHED TO MD187341.

DENOTES CRITICAL COMPONENT. REPLACE ONLY WITH IDENTICAL BOSE PART. REFER TO SERVICE MANUAL FOR BOSE PART NUMBER.

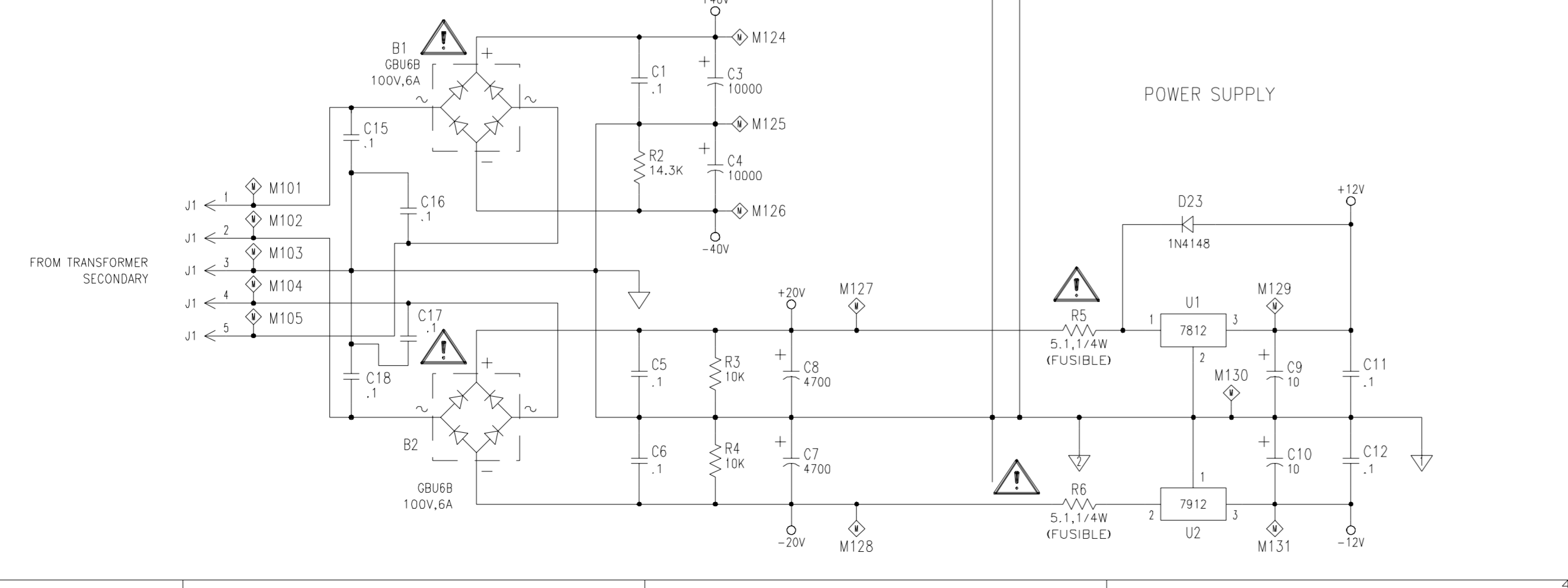
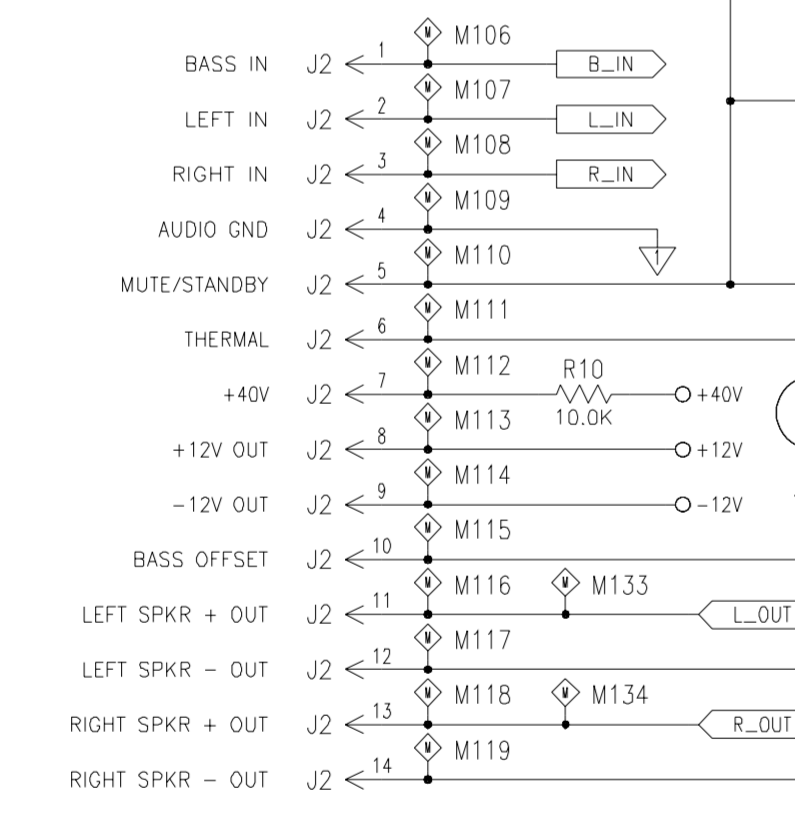
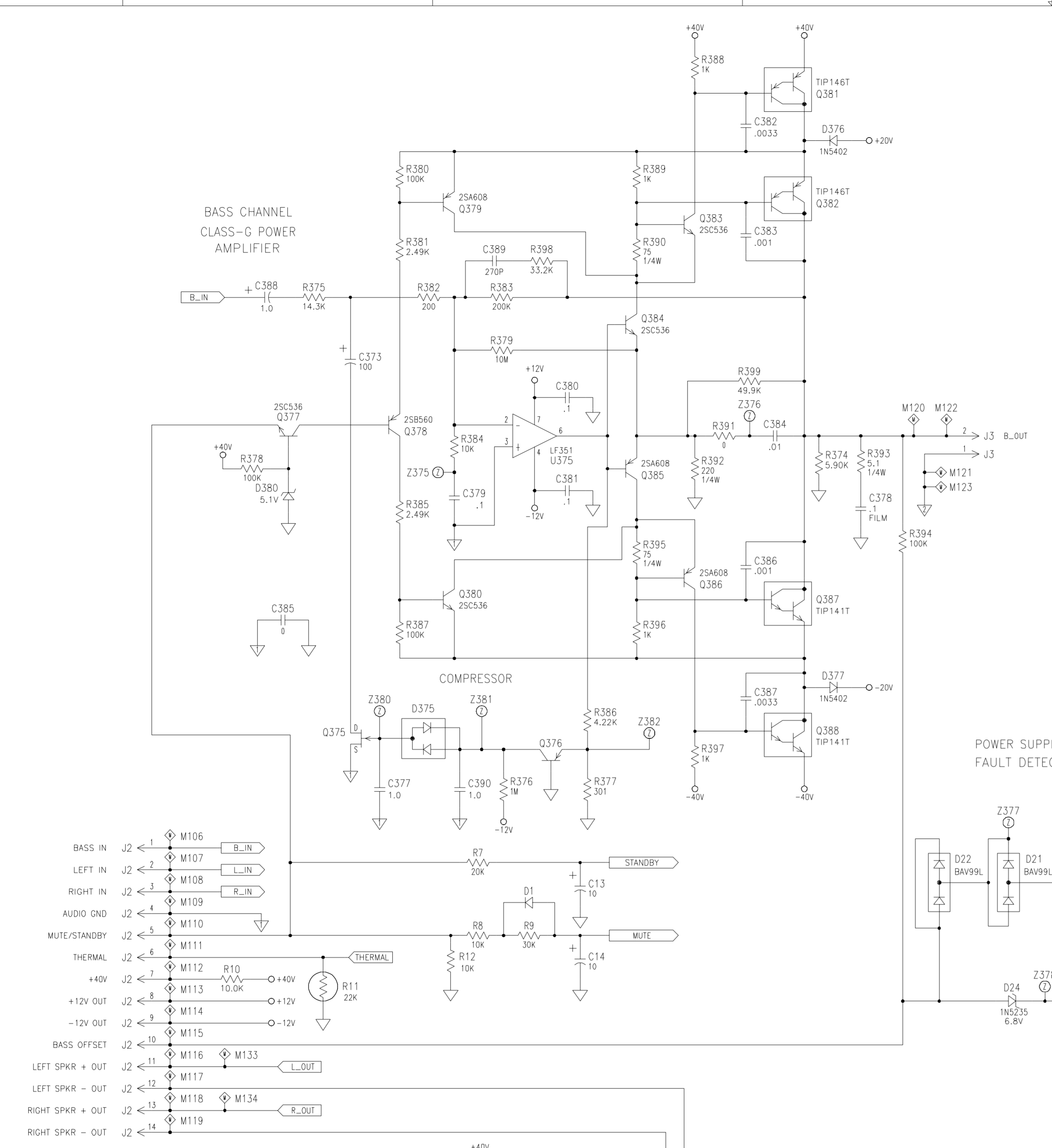
- J6: P/N 146563 (120V/240V/MIL)
- J7: P/N 178742-5 (120V/240V/MIL)
- S1: P/N 178792 (120V/240V/MIL)
- S2: P/N 145307 (MIL)
- F1: P/N 143668-3000 (120V/MIL) 3.0A
- P/N 143668-1600 (240V) 1.6A



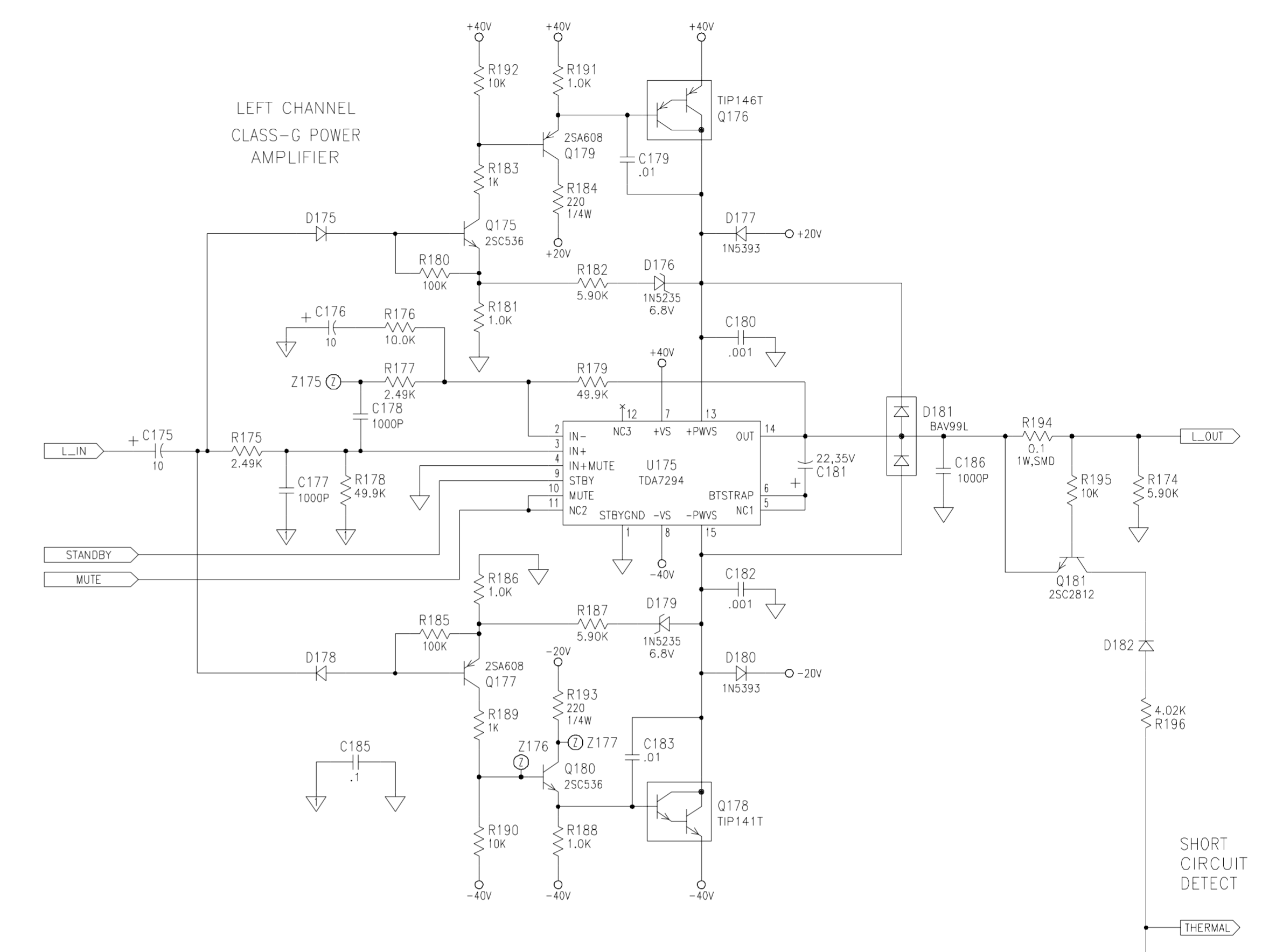
THIRD ANGLE PROJECTION	LEVEL	DRAFTER	DATE
	3		04/02/96
UNLESS OTHERWISE SPECIFIED INTERPRET THIS DRAWING PER ANSI Y14.5M-1982	2	CHECKER	04/02/96
NOTICE	1	ENGINEER	04/02/96
BOSE CORP PROPRIETARY RIGHTS ARE INCLUDED HEREIN. THIS INFORMATION MAY NOT BE COPIED, TRANSMITTED OR DISCLOSED EXCEPT AS AUTHORIZED BY BOSE CORP		SAFETY ENGINEER	04/02/96
		REL TO PROD PER	
		AT REV	

SAFETY CONTROLLED				
FRAMINGHAM, MA 01701-9168				
TITLE				
PC BOARD, AM5P-III/AM5PC				
SIZE	FSCM	CLASS	DWG NO.	REV
D	32108	SD	187341	03
SCALE	N A	CAT. CODE	SHEET 1 OF 3	

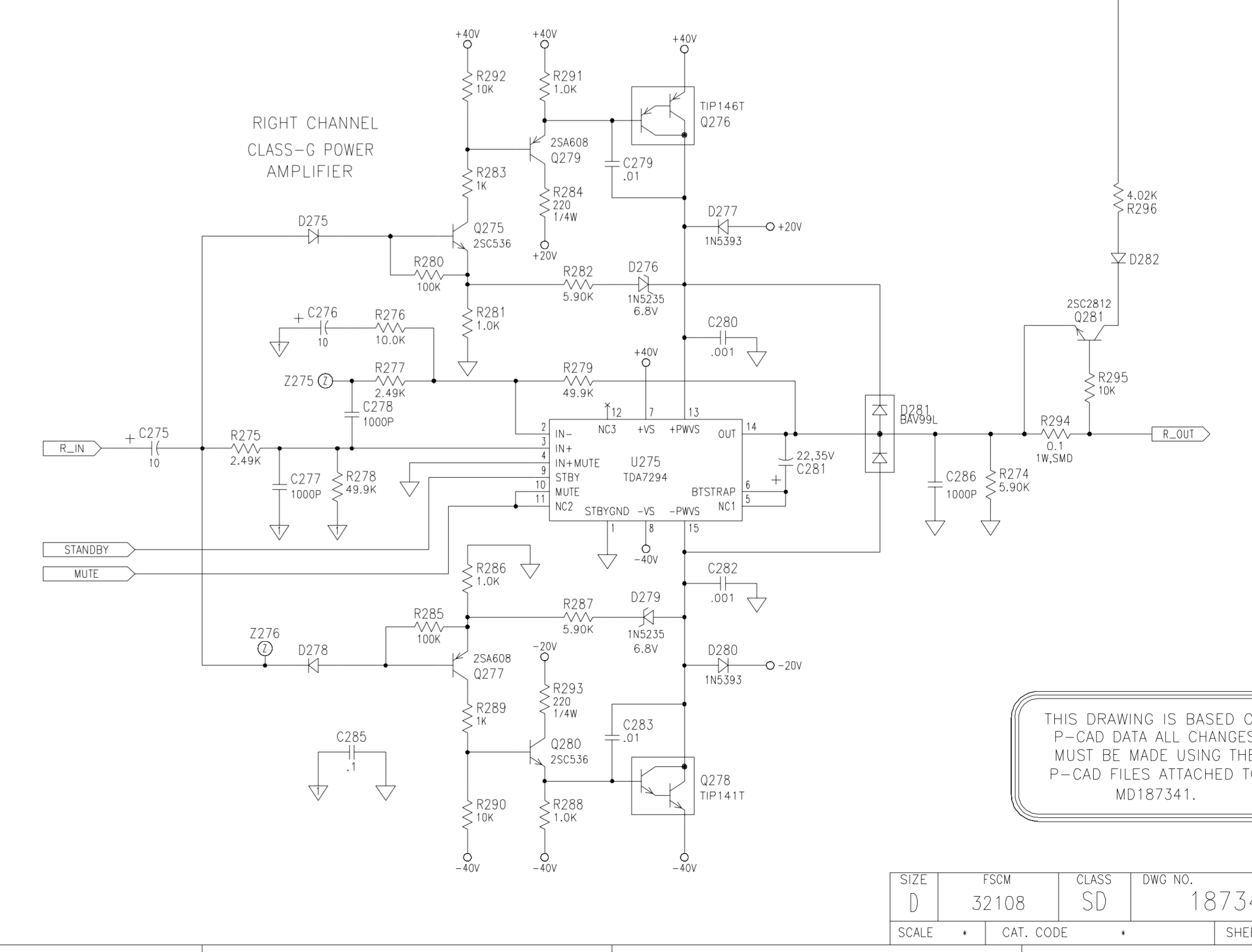
BASS CHANNEL CLASS-G POWER AMPLIFIER



LEFT CHANNEL CLASS-G POWER AMPLIFIER



RIGHT CHANNEL CLASS-G POWER AMPLIFIER



THIS DRAWING IS BASED ON P-CAD DATA ALL CHANGES MUST BE MADE USING THE P-CAD FILES ATTACHED TO MD187341.

8

7

6

5

4

3

CLASS  
SD

DWG NO.

187341

SH

3

1

D

C

B

A

D

C

B

A

## COMPONENT VALUE VARIATION CHART

COMPONENT	AM-5PIII	AM-5PC
C106, C206	.0082uF	.0056uF
C107, C207	.12uF	.082uF
C108, C208	.12uF	.082uF
C109, C209	.027uF	.047uF
C110, C210	.027uF	.047uF
C113, C213	.027uF	.015uF
C114, C214	.027uF	.015uF
C115, C215	.082uF	.0068uF
C116, C216	.082uF	.0068uF
C118, C218	.047uF	.068uF
C119, C219	.047uF	.068uF
C120, C220	.0082uF	.0047uF
C121, C221	.0022uF	270pF
C124, C224	.0033uF	OPEN
C125, C225	.0033uF	OPEN
C131, C231	270pF	100pF
C132, C232	OPEN	.0018uF
R105, R205	7.50K	7.32K
R106, R206	7.50K	7.32K
R114, R214	7.50K	22.1K
R116, R216	7.15K	51.1K
R117, R217	6.81K	1.50K
R118, R218	1.00K	121K
R119, R219	1.21K	2.00K
R121, R221	10.0K	JUMPER
R123, R223	16.9K	73.2K
R124, R224	13.3K	27.4K
R125, R225	10.0K	14.7K
R126, R226	36.5K	OPEN
R127, R227	1.00K	5.11K
R128, R228	OPEN	2.43K
R129, R229	10 OHM	340 OHM
R130, R230	5.11K	1.30K
R131, R231	OPEN	1.00K
R132, R232	196 OHM	1.50K
R133, R233	2.26K	10.0K
R134, R234	2.26K	10.0K
R139, R239	1.00K	1.50K
R142, R242	OPEN	10.0K

THIS DRAWING IS BASED ON  
P-CAD DATA ALL CHANGES  
MUST BE MADE USING THE  
P-CAD FILES ATTACHED TO  
MD187341.

SIZE	FSCM	CLASS	DWG NO.	REV
D	32108	SD	187341	03
SCALE	CAT. CODE	SHEET 3 OF 3		

8

7

6

5

4

3

2

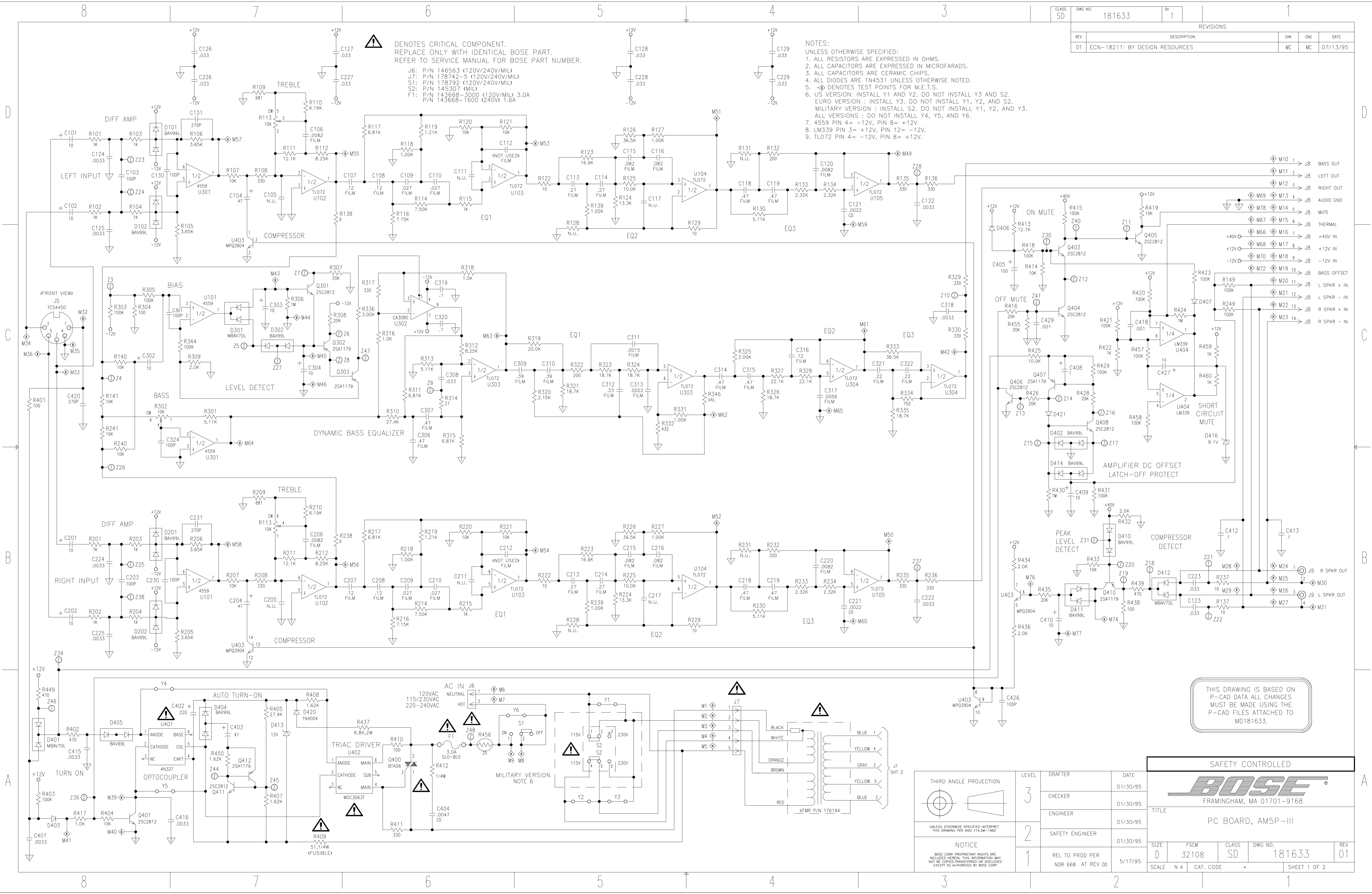
1

CLASS	DWG NO.	SW	REVISIONS		
SD	181633	1	REV	DESCRIPTION	CHK
			01	ECN-18211: BY DESIGN RESOURCES	MC
				DATE	ENG
					MC
					07/13/95

⚠ DENOTES CRITICAL COMPONENT.  
REPLACE ONLY WITH IDENTICAL BOSE PART.  
REFER TO SERVICE MANUAL FOR BOSE PART NUMBER.

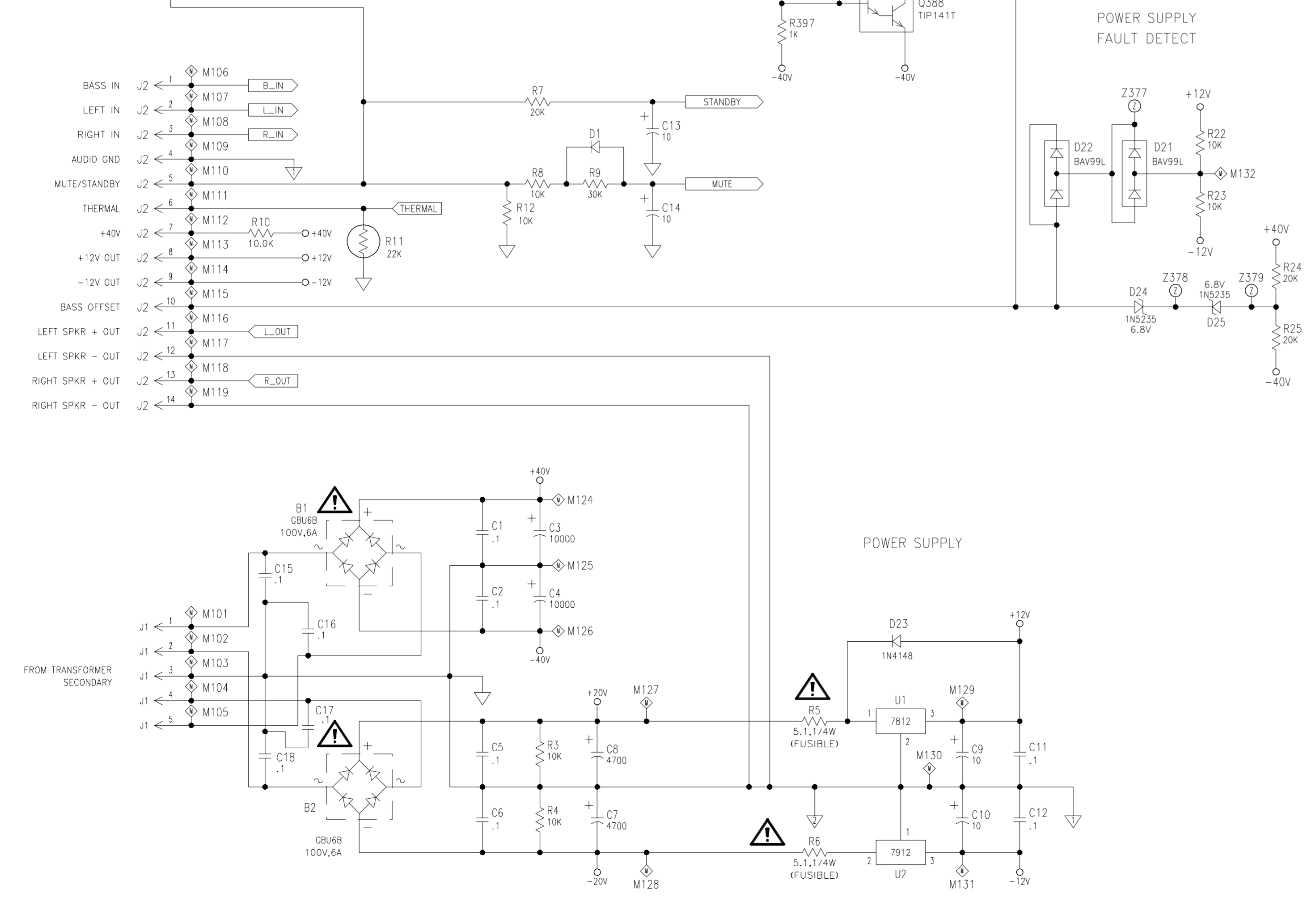
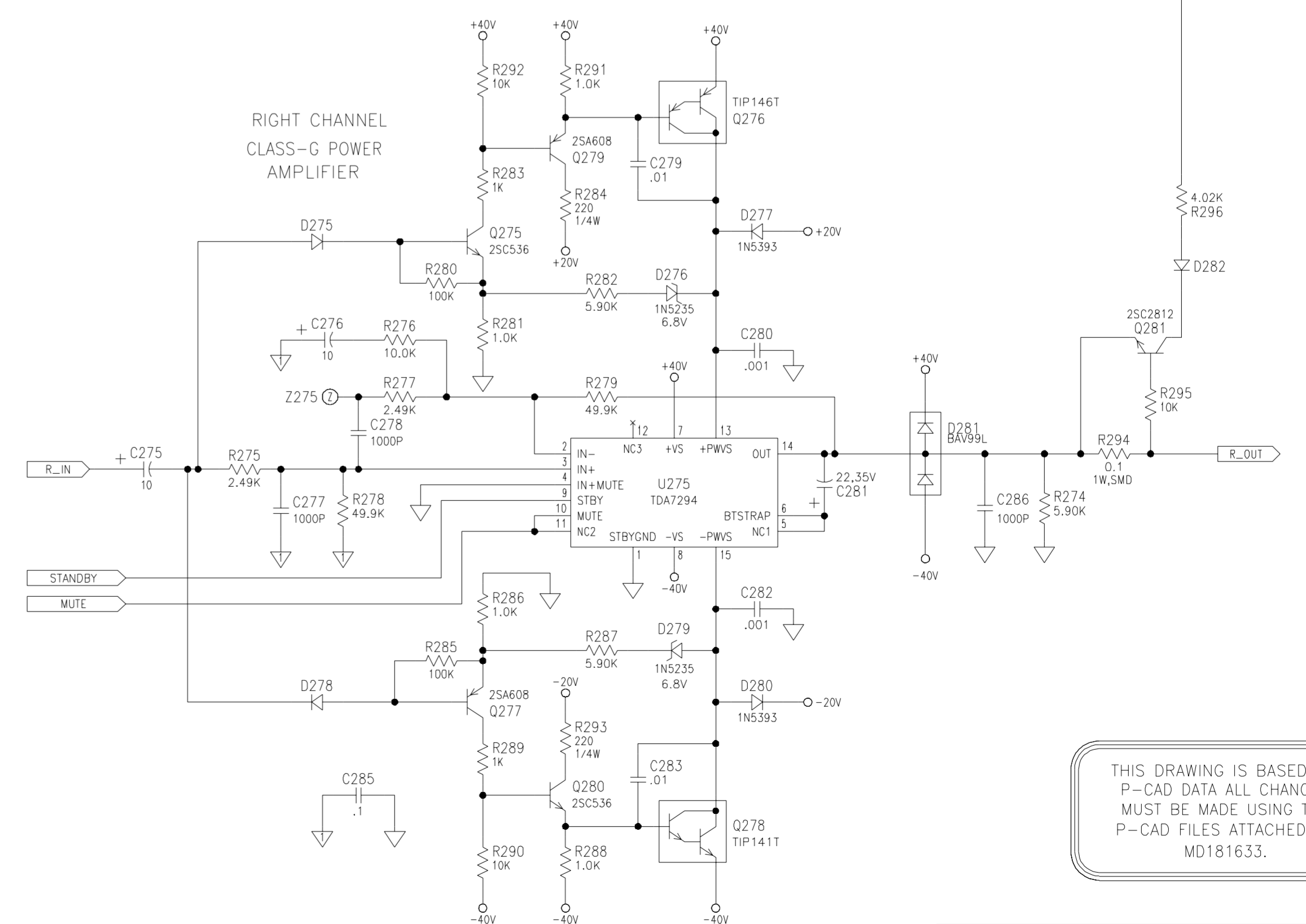
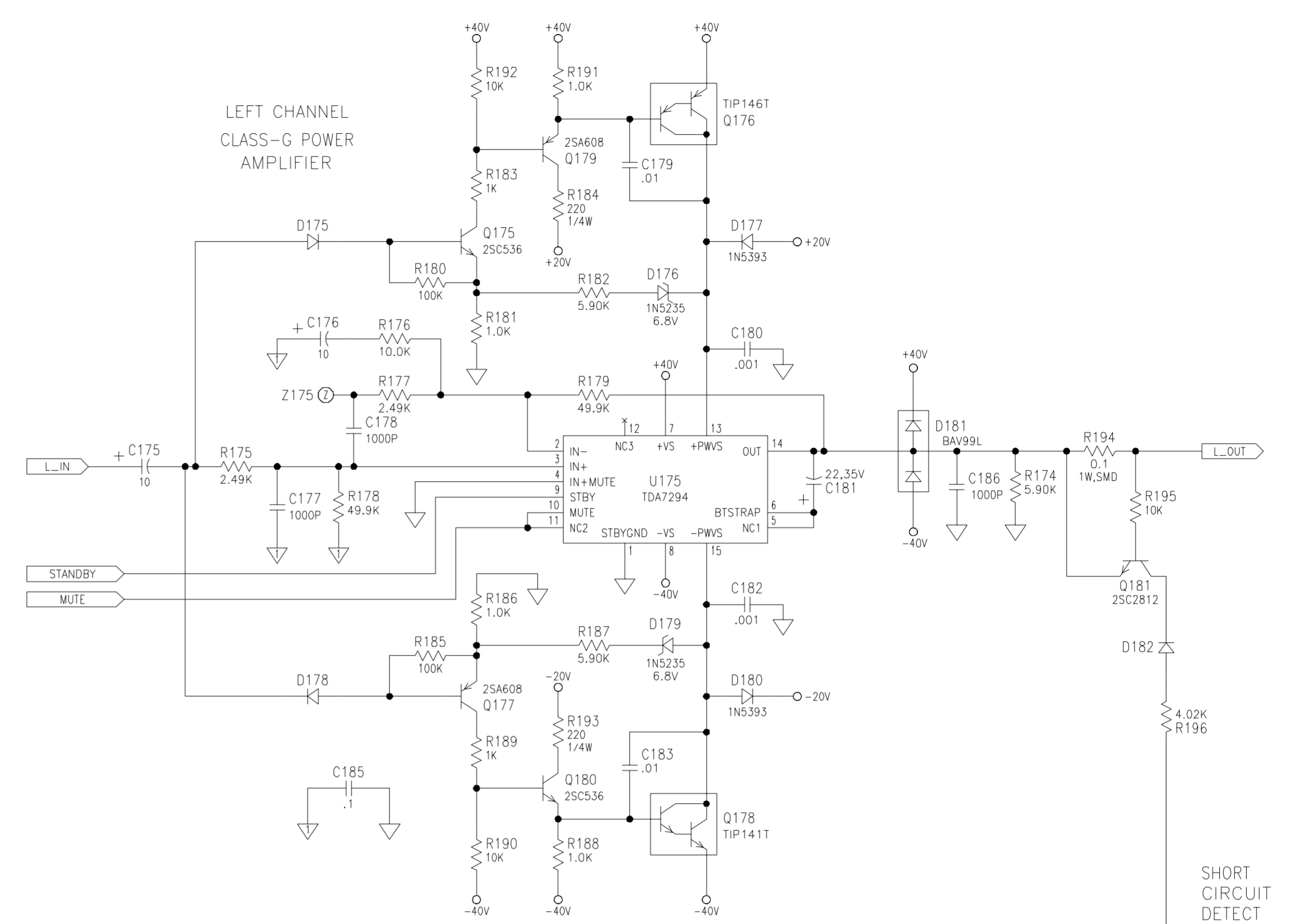
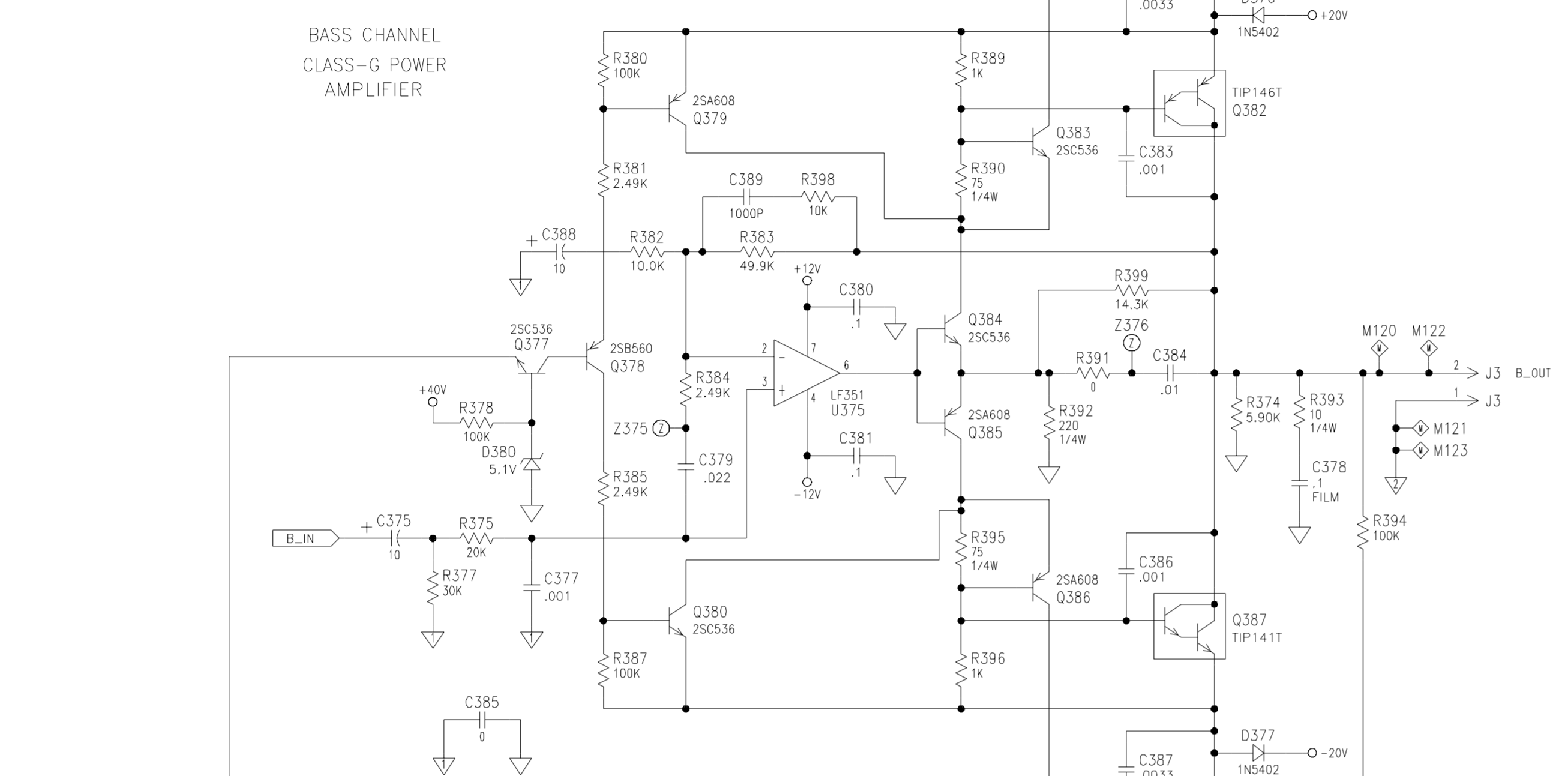
- J6: P/N 146563 (120V/240V/MIL)
- J7: P/N 178742-5 (120V/240V/MIL)
- S1: P/N 178792 (120V/240V/MIL)
- S2: P/N 145307 (MIL)
- F1: P/N 143668-3000 (120V/MIL) 3.0A
- P/N 143668-1600 (240V) 1.6A

- NOTES:
- UNLESS OTHERWISE SPECIFIED: ALL RESISTORS ARE EXPRESSED IN OHMS.
  - ALL CAPACITORS ARE EXPRESSED IN MICROFARADS.
  - ALL CAPACITORS ARE CERAMIC CHIPS.
  - ALL DIODES ARE 1N4531 UNLESS OTHERWISE NOTED.
  - ⚡ DENOTES TEST POINTS FOR M.E.T.S.
  - US VERSION: INSTALL Y1 AND Y2. DO NOT INSTALL Y3 AND S2.
  - EURO VERSION: INSTALL Y3. DO NOT INSTALL Y1, Y2, AND S2.
  - MILITARY VERSION: INSTALL S2. DO NOT INSTALL Y1, Y2, AND Y3.
  - ALL VERSIONS: DO NOT INSTALL Y4, Y5, AND Y6.
  - 4559 PIN 4 = -12V, PIN 8 = +12V.
  - LM339 PIN 3 = +12V, PIN 12 = -12V.
  - TL072 PIN 4 = -12V, PIN 8 = +12V.



THIS DRAWING IS BASED ON P-CAD DATA ALL CHANGES MUST BE MADE USING THE P-CAD FILES ATTACHED TO MD181633.

THIRD ANGLE PROJECTION						LEVEL	DRAFTER	DATE
UNLESS OTHERWISE SPECIFIED INTERPRET THIS DRAWING PER ANSI Y14.5M-1982						3	CHECKER	01/30/95
						2	ENGINEER	01/30/95
NOTICE BOSE CORP PROPRIETARY RIGHTS ARE INCLUDED HEREIN. THIS INFORMATION MAY NOT BE COPIED, TRANSMITTED OR DISCLOSED EXCEPT AS AUTHORIZED BY BOSE CORP.						1	SAFETY ENGINEER	01/30/95
						1	REL TO PROD PER	5/17/95
SCALE		N A	CAT. CODE	TITLE		SAFETY CONTROLLED		
D		32108	CLASS	SD		FRAMINGHAM, MA 01701-9168		
181633		REV		PC BOARD, AM5P-III				
01		SCALE		SHEET 1 OF 2				



- BASS IN J2 1 M106 B\_IN
- LEFT IN J2 2 M107 L\_IN
- RIGHT IN J2 3 M108 R\_IN
- AUDIO GND J2 4 M109
- MUTE/STANDBY J2 5 M110
- THERMAL J2 6 M111 THERMAL
- +40V J2 7 M112 R10 10.0K +40V
- +12V OUT J2 8 M113 +12V
- 12V OUT J2 9 M114 -12V
- BASS OFFSET J2 10 M115
- LEFT SPKR + OUT J2 11 M116 L\_OUT
- LEFT SPKR - OUT J2 12 M117
- RIGHT SPKR + OUT J2 13 M118 R\_OUT
- RIGHT SPKR - OUT J2 14 M119

THIS DRAWING IS BASED ON P-CAD DATA ALL CHANGES MUST BE MADE USING THE P-CAD FILES ATTACHED TO MD181633.