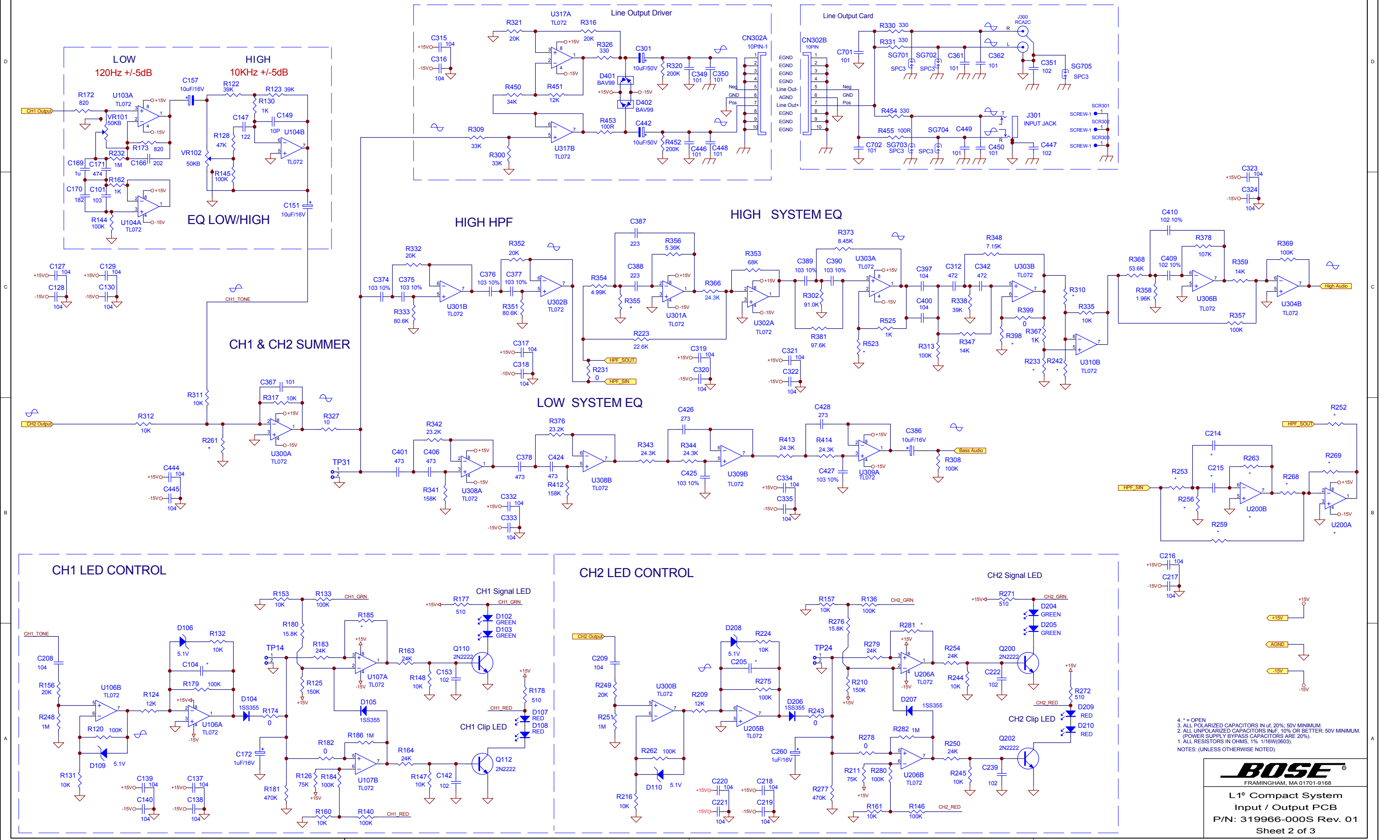
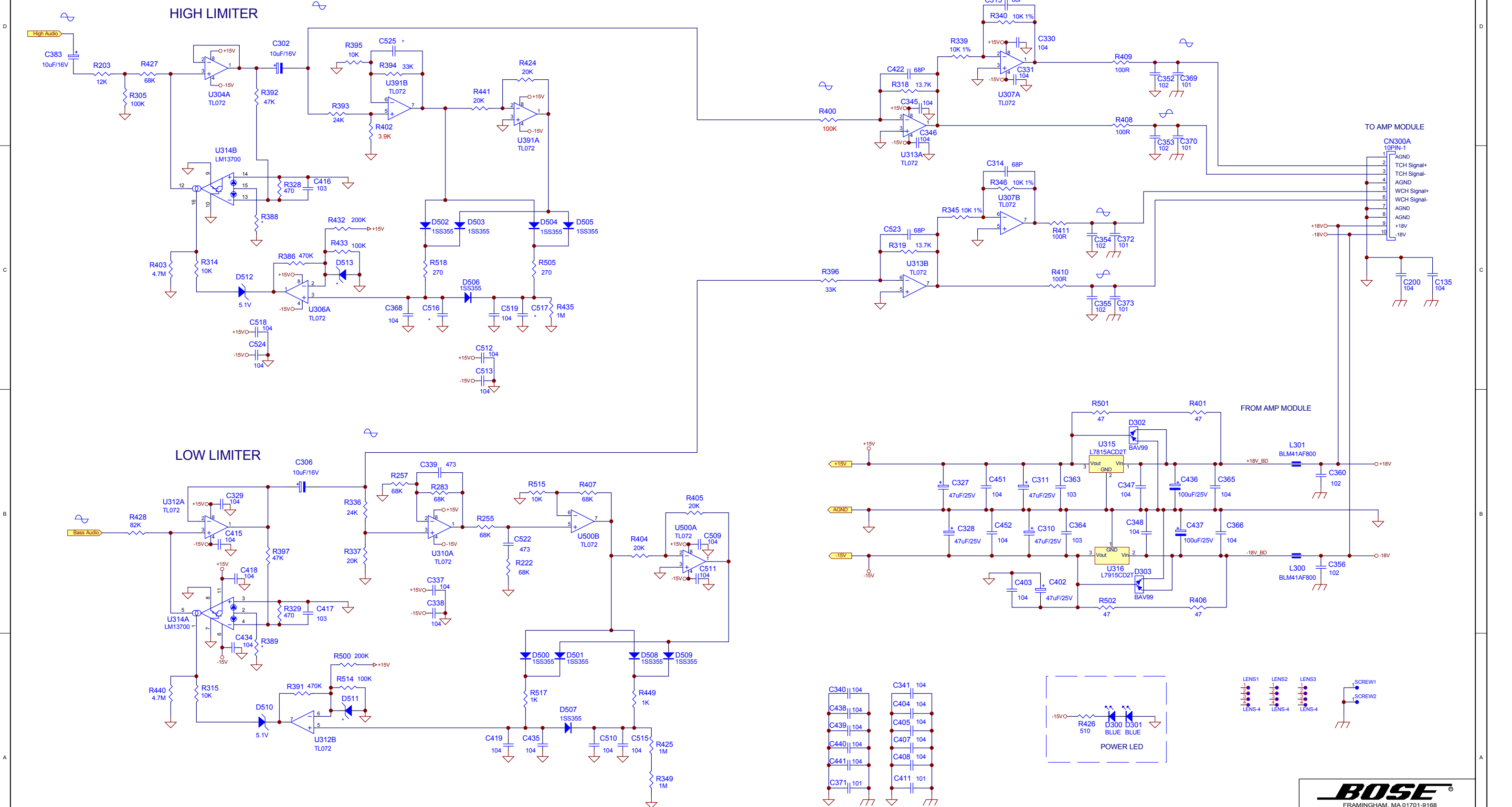


4. * = OPEN
 3. ALL POLARIZED CAPACITORS IN uF, 20% 50V MINIMUM.
 2. ALL UNPOLARIZED CAPACITORS IN uF, 10% OR BETTER, 50V MINIMUM.
 (POWER SUPPLY BYPASS CAPACITORS ARE 20%).
 1. ALL RESISTORS IN OHMS, 1% 1/16W(0603).
 NOTES: (UNLESS OTHERWISE NOTED)



4. * = OPEN
 3. ALL POLARIZED CAPACITORS IN uf. 20%; 50V MINIMUM.
 2. ALL UNPOLARIZED CAPACITORS IN uf. 10% OR BETTER; 50V MINIMUM.
 (POWER SUPPLY BYPASS CAPACITORS ARE 20%).
 1. ALL RESISTORS IN OHMS, 1% 1/16W(0603).
 NOTES: (UNLESS OTHERWISE NOTED)

PRE-AMP SCHEMATIC SECTION

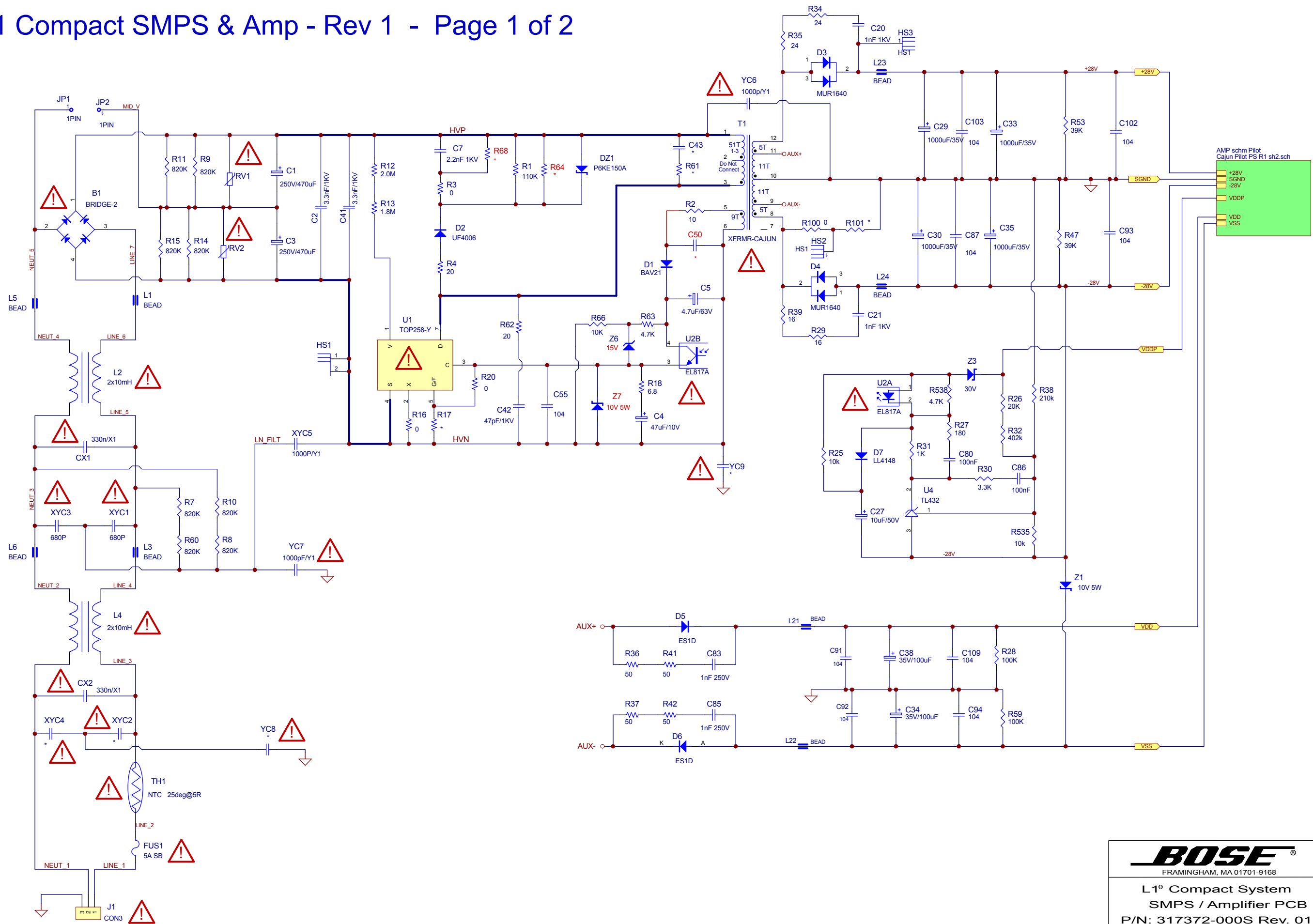


4. * = OPEN
 3. ALL POLARIZED CAPACITORS IN uf, 20%, 50V MINIMUM.
 2. ALL UNPOLARIZED CAPACITORS IN uF, 10% OR BETTER; 50V MINIMUM.
 (POWER SUPPLY BYPASS CAPACITORS ARE 20%).
 1. ALL RESISTORS IN OHMS, 1% 1/16W(0603).
 NOTES: (UNLESS OTHERWISE NOTED)

BOSE
 FRAMINGHAM, MA 01701-9188

L1® Compact System
 Input / Output PCB
 P/N: 319966-000S Rev. 01
 Sheet 3 of 3

L1 Compact SMPS & Amp - Rev 1 - Page 1 of 2



AMP schm Pilot
Cajun Pilot PS R1 sh2.sch

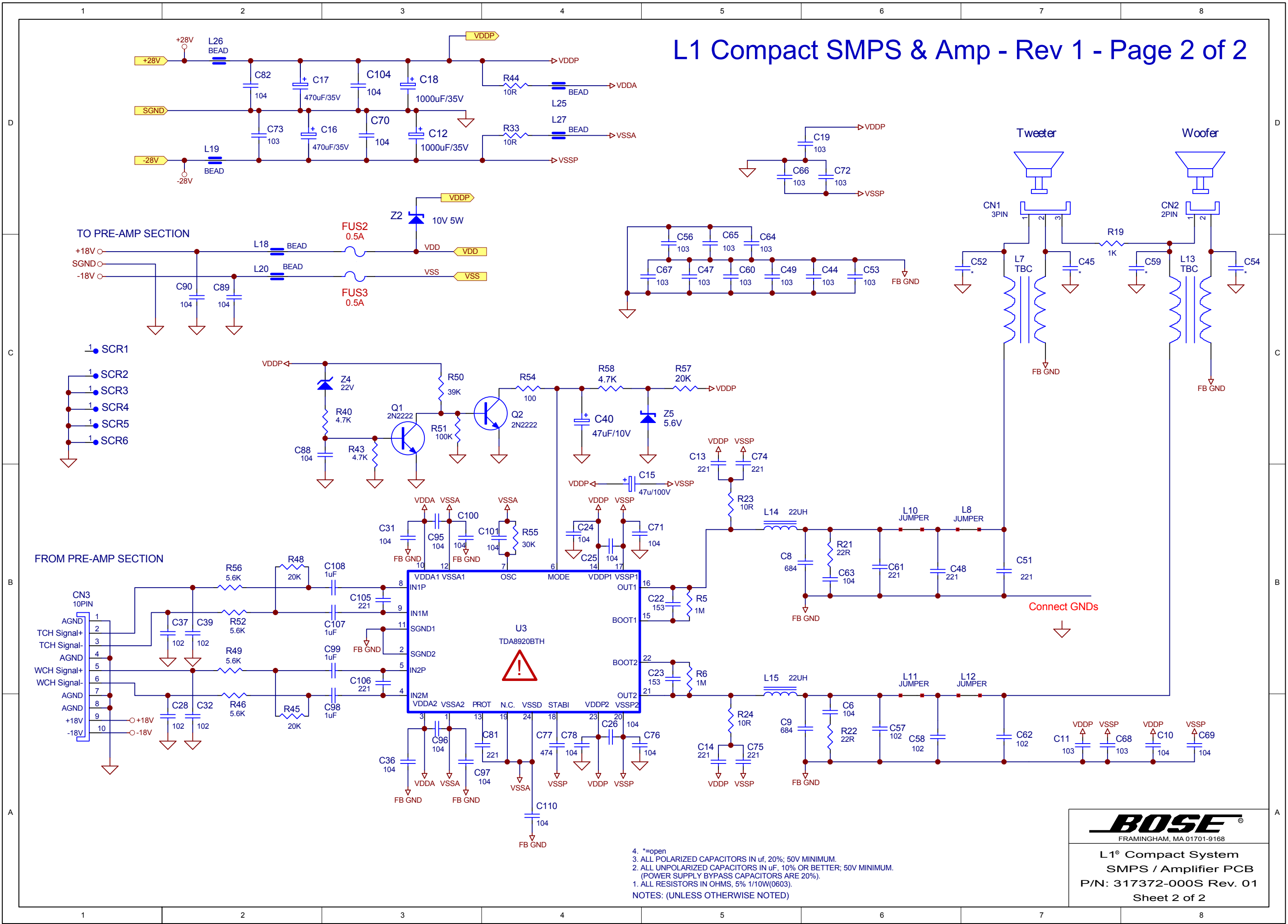
- +28V
- SGND
- 28V
- VDDP
- VDD
- VSS

AC Input from IEC outlet and AC Power Switch

BOSE
FRAMINGHAM, MA 01701-9168

L1® Compact System
SMPS / Amplifier PCB
P/N: 317372-000S Rev. 01
Sheet 1 of 2

L1 Compact SMPS & Amp - Rev 1 - Page 2 of 2

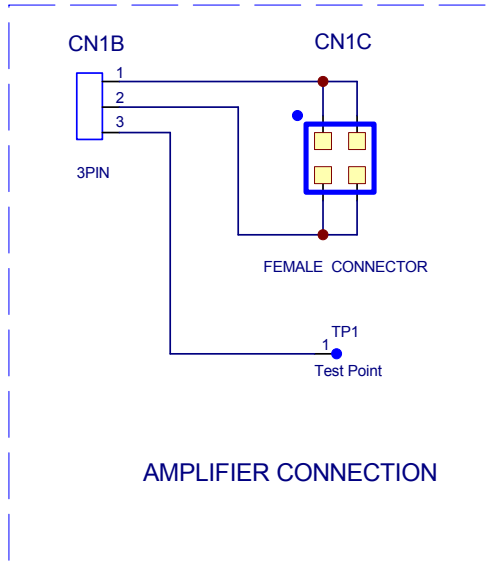


- 4. *=open
 - 3. ALL POLARIZED CAPACITORS IN uf, 20%; 50V MINIMUM.
 - 2. ALL UNPOLARIZED CAPACITORS IN uF, 10% OR BETTER; 50V MINIMUM.
(POWER SUPPLY BYPASS CAPACITORS ARE 20%).
 - 1. ALL RESISTORS IN OHMS, 5% 1/10W(0603).
- NOTES: (UNLESS OTHERWISE NOTED)

BOSE[®]
FRAMINGHAM, MA 01701-9168

L1[®] Compact System
SMPS / Amplifier PCB
P/N: 317372-000S Rev. 01
Sheet 2 of 2

L1 Compact Speaker Connections



Connection with Twiddler Array in Base

