

SoundTouch™ Wireless Adapter (Airplay and non-Airplay versions)



CONTENTS

Product Description	3
Part List Notes	3
Packaging Part List, SoundTouch™ Wireless Adapter (refer to Figure 1)	4
Figure 1. Packaging View	4
Main Part List, SoundTouch Wireless Adapter (refer to Figure 2)	5
Figure 2. Exploded View	5
Electrical Part Lists	6-28
Wi-Fi Module PCB Assembly	6-24
Input / Output PCB Assembly	24-28
Disassembly Procedures	29
TAP Command Setup	30
Wi-Fi Test Procedure	31
Test Procedures	32-35
Service Manual Revision History	36

CAUTION: The Bose® SoundTouch™ Wireless Adapter contains no user-serviceable parts. To prevent warranty infractions, refer servicing to warranty service stations or factory service.

PROPRIETARY INFORMATION

THIS DOCUMENT CONTAINS PROPRIETARY INFORMATION OF BOSE CORPORATION WHICH IS BEING FURNISHED ONLY FOR THE PURPOSE OF SERVICING THE IDENTIFIED BOSE PRODUCT BY AN AUTHORIZED BOSE SERVICE CENTER OR OWNER OF THE BOSE PRODUCT, AND SHALL NOT BE REPRODUCED OR USED FOR ANY OTHER PURPOSE.

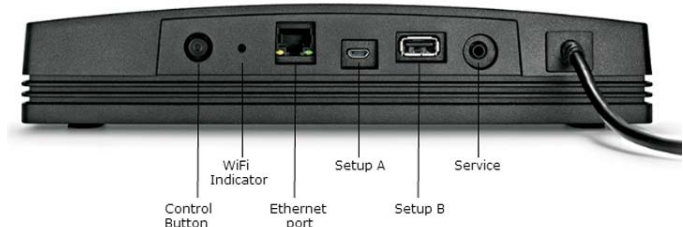
WARRANTY

The Bose SoundTouch Wireless Adapter is covered by a 1-year limited warranty. Warranty is 2 years in Europe.

PRODUCT DESCRIPTION

The Bose® SoundTouch™ Wireless Adapter is sold as part of the SoundTouch Stereo JC Wi-Fi music system, the SA-4 amplifier system (both use the Airplay version of the wireless adapter), and the Lifestyle and VideoWave SoundTouch compatible systems (they use the non-Airplay version).

The wireless adapter connects to these systems via the Bose link connector located on these products. The adapter derives power from the SoundTouch product and contains the Wi-Fi circuitry that allows connection to the customer's wireless network. The non-Airplay version of the wireless adapter also has a USB connection which connects to the system's media center.



SoundTouch Features

- SoundTouch wireless adapter enables Wi-Fi access to your home network.
- An Ethernet connector enables wired access to your home network.
- Stream your music via AirPlay from your Apple devices.
- USB connectors for network setup.*


* *The USB connectors on the back of the system (SETUP A and SETUP B) are for setup only. The connectors are not designed to charge smartphones, tablets, or similar devices.*

With SoundTouch, you can stream Internet radio, music services, and your music library. If you have Wi-Fi at home, you're ready to enjoy your favorite music in any room or outdoor space that you want.

Key Benefits

- Enjoy wireless access to Internet radio, music services, and your music library.
- Stream your favorite music easily with personalized presets.
- Works with your existing home Wi-Fi network.
- Free SoundTouch app for your computer, smartphone, or tablet provides more powerful control.
- Simply add additional systems at any time for a multi-room listening experience.
- Wide selection of Bose® audio systems lets you choose the right solution for any room or outdoor space.

PART LIST NOTES

1. The individual parts located on the PCBs are listed in the Electrical Part List.
2. This part is referenced for informational purposes only. It is not stocked as a repair part. Refer to the next higher assembly for a replacement part.
3.  This part is critical for safety purposes. Failure to use a substitute replacement with the same safety characteristics as the recommended replacement part might create shock, fire and/or other hazards.
4. When replacing the programmed Wi-Fi module, the serial number and country code must be set on the replacement board before returning the unit to the customer. Refer to pages 33 and 34 for procedures.

PACKAGING PART LIST

SoundTouch™ Wireless Adapter (refer to Figure 1)

Item Number	Description	Part Number	Qty	Note
1	BAG,FOAM-FILM,5.00X13.00X0.03	363682-0010	1	
2	CARTON,DC,175 E,9.50X3.50X1.94	363681-0010	1	



Figure 1. Packaging View

MAIN PART LIST

SoundTouch™ Wireless Adapter (refer to Figure 2)

Item Number	Description	Part Number	Qty	Note
1	CABLE ASSY, FFC, STRAIGHT, 31 POS, 80mm	370236-0080	1	
2	CABLE, FFC, 40 POS, 65mm	355832-0065	1	
3	PCB ASSY, SOUNDTOUCH, I/O, SVC	355647-001S	1	1
4	TOP ENCLOSURE SUBASSY, SVCE (INCLUDES BOSE LINK CABLE)	625539-001S	1	
5	WI-FI MODULE, PROG, SVC (AIRPLAY)	625125-041S or 625125-071S	1	1
	WI-FI MODULE, PROG, SVC (NON-AIRPLAY)	625125-012S or 625125-052S		
6	BOTTOM ENCLOSURE SUBASSY, SVCE (INCLUDES FEET)	625538-001S	1	
-	SCRIM, CONN, LRG	361216-0010	1	
-	SCREW, TAPP, 4-16X.44, PAN, TORX	343757-007	3	
	SCREW, TAPP, 4-16X.75, PAN, TORX	343757-012	3	
-	SCRIM, RESET BUTTON	374284-0010	1	

Note: The Airplay version Wi-Fi module (item 5) is used in the SoundTouch wireless adapter that ships with the SA-4 amplifier and the SoundTouch Stereo JC music system.

Important Note: When replacing the programmed Wi-Fi module PCB (item 5 above), the serial number and country code **MUST** be set on the replacement board before returning the unit to the customer. Refer to pages 33 and 34 for procedures.

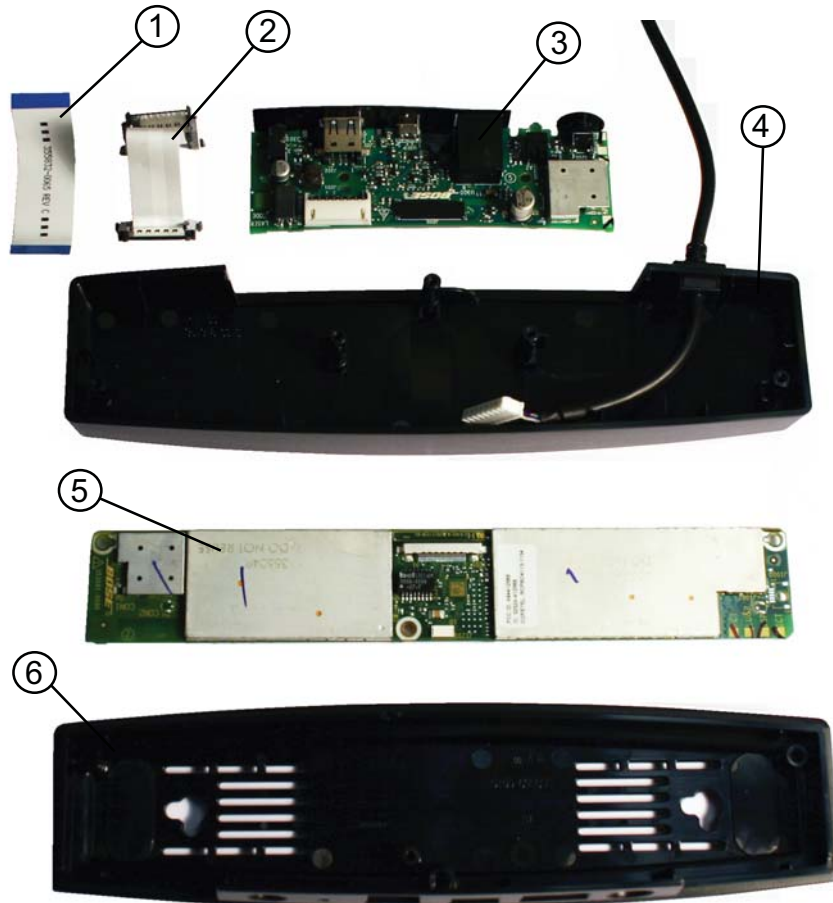


Figure 2. Exploded View

ELECTRICAL PART LIST

Wi-Fi Module PCB Assembly

Resistors

Reference Designator	Description	Part Number	Note
R13	51 OHM, 0402 ARRAY, 4 5%, 0.063W	354737-510J4	
R14	51 OHM, 0402 ARRAY, 4 5%, 0.063W	354737-510J4	
R15	0 OHM, JUMPER, 0402	280043	
R16	0 OHM, JUMPER, 0402	280043	
R27	220 OHM, 0402 ARRAY, 4 5%, 0.063W	354737-221J4	
R123	121 Ohm, 0402, 63mw, 1%	268361-121R	
R124	30.1 OHMS, 0402, 0.063W, 1%	268361-30R1	
R125	5.76K, 0402, 63MW, 1%	268361-5761	
R126	5.76K, 0402, 63MW, 1%	268361-5761	
R127	5.76K, 0402, 63MW, 1%	268361-5761	
R128	187 OHMS, 0402, 63mw, 1%	268361-187R	
R129	187 OHMS, 0402, 63mw, 1%	268361-187R	
R132	392 OHM, 0402, 63MW, 1%	268361-392R	
R133	51 OHMS, 0402, 0.063W, 1%	268361-51R0	
R134	100 OHM, 0402, 63MW, 1%	268361-1000	
R135	100 OHM, 0402, 63MW, 1%	268361-1000	
R136	100 OHM, 0402, 63MW, 1%	268361-1000	
R137	100 OHM, 0402, 63MW, 1%	268361-1000	
R138	0 OHM, JUMPER, 0402	280043	
R139	0 OHM, JUMPER, 0402	280043	
R140	100 OHM, 0402, 63MW, 1%	268361-1000	
R141	3.01K, 0402, 63MW, 1%	268361-3011	
R142	10.0K, 0402, 63MW, 1%	268361-1002	
R143	10.0K, 0402, 63MW, 1%	268361-1002	
R144	10.0K, 0402, 63MW, 1%	268361-1002	
R146	JUMPER, CHIP, 0603	196042	
R147	JUMPER, CHIP, 0603	196042	
R200	10.0K, 0402, 63MW, 1%	268361-1002	
R201	13.0K, 0402, 63MW, 1%	268361-1302	
R202	6.04K, 0402, 63MW, 1%	268361-6041	
R203	10.0K, 0402, 63MW, 1%	268361-1002	
R204	10.0K, 0402, 63MW, 1%	268361-1002	
R205	2.74K, 0402, 63MW, 1%	268361-2741	
R206	100 OHM, 0402, 63MW, 1%	268361-1000	
R207	1.50K, 0402, 63MW, 1%	268361-1501	
R208	10.0K, 0402, 63MW, 1%	268361-1002	
R209	10.0K, 0402, 63MW, 1%	268361-1002	
R210	10.0K, 0402, 63MW, 1%	268361-1002	
R211	10.0K, 0402, 63MW, 1%	268361-1002	
R212	0 OHM, JUMPER, 0402	280043	
R213	0 OHM, JUMPER, 0402	280043	
R214	10.0K, 0402, 63MW, 1%	268361-1002	
R215	100 OHM, 0402, 63MW, 1%	268361-1000	
R216	100 OHM, 0402, 63MW, 1%	268361-1000	
R217	10.0K, 0402, 63MW, 1%	268361-1002	
R218	10.0K, 0402, 63MW, 1%	268361-1002	
R219	4.75K, 0402, 0.063W, 1%	268361-4751	

ELECTRICAL PART LIST

Wi-Fi Module PCB Assembly

Resistors (continued)

Reference Designator	Description	Part Number	Note
R220	10.0K, 0402, 63MW, 1%	268361-1002	
R221	4.75K, 0402, 0.063W, 1%	268361-4751	
R225	100 OHM, 0402, 63MW, 1%	268361-1000	
R229	100 OHM, 0402, 63MW, 1%	268361-1000	
R240	10.0K, 0402, 63MW, 1%	268361-1002	
R242	10.0K, 0402, 63MW, 1%	268361-1002	
R243	10.0K, 0402, 63MW, 1%	268361-1002	
R244	10.0K, 0402, 63MW, 1%	268361-1002	
R245	10.0K, 0402, 63MW, 1%	268361-1002	
R246	0 OHM, JUMPER, 0402	280043	
R247	33 OHM, 0402, 1/16W, 1%	268361-33R0	
R276	10.0K, 0402, 63MW, 1%	268361-1002	
R279	0 OHM, JUMPER, 0402	280043	
R280	0 OHM, 0402 ARRAY, 4CONVEX, 0.5A	357537-0020	
R281	0 OHM, 0402 ARRAY, 4CONVEX, 0.5A	357537-0020	
R282	0 OHM, 0402 ARRAY, 4CONVEX, 0.5A	357537-0020	
R283	0 OHM, 0402 ARRAY, 4CONVEX, 0.5A	357537-0020	
R284	0 OHM, 0402 ARRAY, 4CONVEX, 0.5A	357537-0020	
R285	0 OHM, 0402 ARRAY, 4CONVEX, 0.5A	357537-0020	
R286	0 OHM, 0402 ARRAY, 4CONVEX, 0.5A	357537-0020	
R287	0 OHM, 0402 ARRAY, 4CONVEX, 0.5A	357537-0020	
R288	0 OHM, 0402 ARRAY, 4CONVEX, 0.5A	357537-0020	
R289	0 OHM, 0402 ARRAY, 4CONVEX, 0.5A	357537-0020	
R290	0 OHM, 0402 ARRAY, 4CONVEX, 0.5A	357537-0020	
R300	100 OHM, 0402, 63MW, 1%	268361-1000	
R302	1.00K, 0402, 63MW, 1%	268361-1001	
R304	100 OHM, 0402, 63MW, 1%	268361-1000	
R305	100 OHM, 0402, 63MW, 1%	268361-1000	
R307	10.0K, 0402, 63MW, 1%	268361-1002	
R308	10.0K, 0402, 63MW, 1%	268361-1002	
R309	10.0K, 0402, 63MW, 1%	268361-1002	
R311	100 OHM, 0402, 63MW, 1%	268361-1000	
R400	51 OHMS, 0402, 0.063W, 1%	268361-51R0	
R401	51 OHMS, 0402, 0.063W, 1%	268361-51R0	
R402	243 OHMS, 0402, 63MW, 1%	268361-2430	
R403	10.0K, 0402, 63MW, 1%	268361-1002	
R404	10.0K, 0402, 63MW, 1%	268361-1002	
R406	49.9 OHM, 0402, 63MW, 1%	268361-49R9	
R407	51 OHMS, 0402, 0.063W, 1%	268361-51R0	
R408	100 OHM, 0402, 63MW, 1%	268361-1000	
R409	10.0K, 0402, 63MW, 1%	268361-1002	
R413	806 OHM, 0402, 63mw, 1%	268361-806R	
R414	1.00K, 0402, 63MW, 1%	268361-1001	
R415	33 OHM, 0402, 1/16W, 1%	268361-33R0	
R421	51 OHM, 0402 ARRAY, 4 5%, 0.063W	354737-510J4	
R422	51 OHM, 0402 ARRAY, 4 5%, 0.063W	354737-510J4	
R423	51 OHM, 0402 ARRAY, 4 5%, 0.063W	354737-510J4	

ELECTRICAL PART LIST

Wi-Fi Module PCB Assembly

Resistors (continued)

Reference Designator	Description	Part Number	Note
R424	51 OHM, 0402 ARRAY, 4 5%, 0.063W	354737-510J4	
R425	51 OHM, 0402 ARRAY, 4 5%, 0.063W	354737-510J4	
R426	51 OHM, 0402 ARRAY, 4 5%, 0.063W	354737-510J4	
R500	100 OHM, 0402, 63MW, 1%	268361-1000	
R501	100 OHM, 0402, 63MW, 1%	268361-1000	
R502	100 OHM, 0402, 63MW, 1%	268361-1000	
R503	10.0K, 0402, 63MW, 1%	268361-1002	
R504	100 OHM, 0402, 63MW, 1%	268361-1000	
R505	100 OHM, 0402, 63MW, 1%	268361-1000	
R506	10.0K, 0402, 63MW, 1%	268361-1002	
R507	5.76K, 0402, 63MW, 1%	268361-5761	
R508	4.75K, 0402, 0.063W, 1%	268361-4751	
R509	100 OHM, 0402, 63MW, 1%	268361-1000	
R510	100 OHM, 0402, 63MW, 1%	268361-1000	
R511	4.53K, 0402, 0.063W, 1%	268361-4531	
R513	10.0K, 0402, 63MW, 1%	268361-1002	
R514	10.0K, 0402, 63MW, 1%	268361-1002	
R515	10.0K, 0402, 63MW, 1%	268361-1002	
R516	100 OHM, 0402, 63MW, 1%	268361-1000	
R517	10.0K, 0402, 63MW, 1%	268361-1002	
R518	100 OHM, 0402, 63MW, 1%	268361-1000	
R519	100 OHM, 0402, 63MW, 1%	268361-1000	
R520	100 OHM, 0402, 63MW, 1%	268361-1000	
R521	100 OHM, 0402, 63MW, 1%	268361-1000	
R522	56.2K, 0402, 63MW, 1%	268361-5622	
R523	100 OHM, 0402, 63MW, 1%	268361-1000	
R524	1.00K, 0402, 63MW, 1%	268361-1001	
R525	10.0K, 0402, 63MW, 1%	268361-1002	
R527	10.0K, 0402, 63MW, 1%	268361-1002	
R528	100 OHM, 0402, 63MW, 1%	268361-1000	
R529	10.0K, 0402, 63MW, 1%	268361-1002	
R530	100 OHM, 0402, 63MW, 1%	268361-1000	
R531	100 OHM, 0402, 63MW, 1%	268361-1000	
R532	100 OHM, 0402, 63MW, 1%	268361-1000	
R533	10.0K, 0402, 63MW, 1%	268361-1002	
R534	10.0K, 0402, 63MW, 1%	268361-1002	
R535	1.00K, 0402, 63MW, 1%	268361-1001	
R537	100 OHM, 0402, 63MW, 1%	268361-1000	
R538	10.0K, 0402, 63MW, 1%	268361-1002	
R539	10.0K, 0402, 63MW, 1%	268361-1002	
R540	301 OHM, 0402, 63MW, 1%	268361-3010	
R541	301 OHM, 0402, 63MW, 1%	268361-3010	
R544	100 OHM, 0402, 63MW, 1%	268361-1000	
R546	100 OHM, 0402, 63MW, 1%	268361-1000	
R547	100 OHM, 0402, 63MW, 1%	268361-1000	
R548	100 OHM, 0402, 63MW, 1%	268361-1000	
R549	56.2K, 0402, 63MW, 1%	268361-5622	

ELECTRICAL PART LIST

Wi-Fi Module PCB Assembly

Resistors (continued)

Reference Designator	Description	Part Number	Note
R550	56.2K, 0402, 63MW, 1%	268361-5622	
R551	100 OHM, 0402, 63MW, 1%	268361-1000	
R552	100 OHM, 0402, 63MW, 1%	268361-1000	
R553	56.2K, 0402, 63MW, 1%	268361-5622	
R554	56.2K, 0402, 63MW, 1%	268361-5622	
R555	1.50K, 0402, 63MW, 1%	268361-1501	
R560	56.2K, 0402, 63MW, 1%	268361-5622	
R561	56.2K, 0402, 63MW, 1%	268361-5622	
R562	100 OHM, 0402, 63MW, 1%	268361-1000	
R564	100 OHM, 0402, 63MW, 1%	268361-1000	
R565	100 OHM, 0402, 63MW, 1%	268361-1000	
R566	100 OHM, 0402, 63MW, 1%	268361-1000	
R600	4.53K, 0402, 0.063W, 1%	268361-4531	
R602	4.53K, 0402, 0.063W, 1%	268361-4531	
R606	100 OHM, 0402, 63MW, 1%	268361-1000	
R607	10.0K, 0402, 63MW, 1%	268361-1002	
R608	10.0K, 0402, 63MW, 1%	268361-1002	
R609	10.0K, 0402, 63MW, 1%	268361-1002	
R610	10.0K, 0402, 63MW, 1%	268361-1002	
R611	100 OHM, 0402, 63MW, 1%	268361-1000	
R612	100 OHM, 0402, 63MW, 1%	268361-1000	
R613	100 OHM, 0402, 63MW, 1%	268361-1000	
R614	100 OHM, 0402, 63MW, 1%	268361-1000	
R615	10.0K, 0402, 63MW, 1%	268361-1002	
R616	100 OHM, 0402, 63MW, 1%	268361-1000	
R617	100 OHM, 0402, 63MW, 1%	268361-1000	
R618	1.00K, 0402, 63MW, 1%	268361-1001	
R619	10.0K, 0402, 63MW, 1%	268361-1002	
R620	10.0K, 0402, 63MW, 1%	268361-1002	
R621	10.0K, 0402, 63MW, 1%	268361-1002	
R622	100 OHM, 0402, 63MW, 1%	268361-1000	
R623	10.0K, 0402, 63MW, 1%	268361-1002	
R657	100 OHM, 0402, 63MW, 1%	268361-1000	
R661	3.32K, 0402, 63MW, 1%	268361-3321	
R662	3.32K, 0402, 63MW, 1%	268361-3321	
R665	10.0K, 0402, 63MW, 1%	268361-1002	
R667	10.0K, 0402, 63MW, 1%	268361-1002	
R668	100 OHM, 0402, 63MW, 1%	268361-1000	
R669	100 OHM, 0402, 63MW, 1%	268361-1000	
R674	100 OHM, 0402, 63MW, 1%	268361-1000	
R675	100 OHM, 0402, 63MW, 1%	268361-1000	
R676	100 OHM, 0402, 63MW, 1%	268361-1000	
R688	100 OHM, 0402, 63MW, 1%	268361-1000	
R700	10.0K, 0402, 63MW, 1%	268361-1002	
R701	10.0K, 0402, 63MW, 1%	268361-1002	
R702	10.0K, 0402, 63MW, 1%	268361-1002	
R800	10.0K, 0402, 63MW, 1%	268361-1002	

ELECTRICAL PART LIST

Wi-Fi Module PCB Assembly

Resistors (continued)

Reference Designator	Description	Part Number	Note
R801	10.0K, 0402, 63MW, 1%	268361-1002	
R802	10.0K, 0402, 63MW, 1%	268361-1002	
R1000	3.32K, 0402, 63MW, 1%	268361-3321	
R1001	3.32K, 0402, 63MW, 1%	268361-3321	
R1002	49.9 OHM, 0402, 63MW, 1%	268361-49R9	
R1003	56.2K, 0402, 63MW, 1%	268361-5622	
R1004	100 OHM, 0402, 63MW, 1%	268361-1000	
R1005	100 OHM, 0402, 63MW, 1%	268361-1000	
R1006	100 OHM, 0402, 63MW, 1%	268361-1000	
R1007	100 OHM, 0402, 63MW, 1%	268361-1000	
R1008	100 OHM, 0402, 63MW, 1%	268361-1000	
R1009	100 OHM, 0402, 63MW, 1%	268361-1000	
R1010	100 OHM, 0402, 63MW, 1%	268361-1000	
R1011	100 OHM, 0402, 63MW, 1%	268361-1000	
R1014	100 OHM, 0402, 63MW, 1%	268361-1000	
R1015	100 OHM, 0402, 63MW, 1%	268361-1000	
R1016	100 OHM, 0402, 63MW, 1%	268361-1000	
R1100	3.32K, 0402, 63MW, 1%	268361-3321	
R1101	3.32K, 0402, 63MW, 1%	268361-3321	
R1102	100K, 0402, 63MW, 1%	268361-1003	
R1103	100K, 0402, 63MW, 1%	268361-1003	
R1104	1.0M, 0402, 63MW, 1%	268361-1004	
R1105	1.0M, 0402, 63MW, 1%	268361-1004	
R1106	1.0M, 0402, 63MW, 1%	268361-1004	
R1107	100K, 0402, 63MW, 1%	268361-1003	
R1108	100K, 0402, 63MW, 1%	268361-1003	
R1111	4.7 OHMS, 0402, 0.063W, 1%	268361-4R70	
R1112	1.00K, 0805, 1/10W, 5%	133626-1025	
R1113	499 OHMS, 0805, .125W, 1%	133625-4990	
R1114	4.7 OHMS, 0402, 0.063W, 1%	268361-4R70	
R1115	4.7 OHMS, 0402, 0.063W, 1%	268361-4R70	
R1201	100 OHM, 0402, 63MW, 1%	268361-1000	
R1202	100 OHM, 0402, 63MW, 1%	268361-1000	
R1206	100 OHM, 0402, 63MW, 1%	268361-1000	
R1207	100 OHM, 0402, 63MW, 1%	268361-1000	
R1208	100 OHM, 0402, 63MW, 1%	268361-1000	
R1210	100 OHM, 0402, 63MW, 1%	268361-1000	
R1300	10.0K, 0402, 63MW, 1%	268361-1002	
R1301	0 OHM, JUMPER, 0402	280043	
R1303	100K, 0402, 63MW, 1%	268361-1003	
R1304	100K, 0402, 63MW, 1%	268361-1003	
R1306	215K, 0402, 0.063W, 1%	268361-2153	
R1307	100K, 0402, 63MW, 1%	268361-1003	
R1308	23.7K, 0402, 63MW, 1%	268361-2372	
R1309	10.0K, 0402, 63MW, 1%	268361-1002	
R1310	10.0 OHM, 0402, 63MW, 1%	268361-10R0	
R1313	100K, 0402, 63MW, 1%	268361-1003	

ELECTRICAL PART LIST

Wi-Fi Module PCB Assembly

Resistors (continued)

Reference Designator	Description	Part Number	Note
R1314	100K, 0402, 63MW, 1%	268361-1003	
R1315	348K, 0402, 63MW, 1%	268361-3483	
R1316	100K, 0402, 63MW, 1%	268361-1003	
R1317	1 OHM, 0402, 0.063W, 1%	268361-1R00	
R1318	8.25K, 0402, 0.063W, 1%	268361-8251	
R1500	1.50K, 0402, 63MW, 1%	268361-1501	
R1501	51 OHMS, 0402, 0.063W, 1%	268361-51R0	
R1502	51 OHMS, 0402, 0.063W, 1%	268361-51R0	
R1503	1.50K, 0402, 63MW, 1%	268361-1501	
R1504	49.9 OHM, 0805, .125W, 1%	133625-49R9	
R1505	51 OHMS, 0402, 0.063W, 1%	268361-51R0	
R1506	49.9 OHM, 0805, .125W, 1%	133625-49R9	
R1507	274 OHMS, 0402, 63MW, 1%	268361-2740	
R1508	274 OHM, 0402, 63MW, 1%	268361-2740	
R1509	75 OHM, 0402, 63MW, 1%	268361-75R0	
R1510	75 OHM, 0402, 63MW, 1%	268361-75R0	
R1539	100 OHM, 0402, 63MW, 1%	268361-1000	
R1540	100 OHM, 0402, 63MW, 1%	268361-1000	
R1541	100 OHM, 0402, 63MW, 1%	268361-1000	
R1542	100 OHM, 0402, 63MW, 1%	268361-1000	
R1548	100 OHM, 0402, 63MW, 1%	268361-1000	
R1549	100 OHM, 0402, 63MW, 1%	268361-1000	
R1550	100 OHM, 0402, 63MW, 1%	268361-1000	
R1553	12.1K, 0402, 63MW, 1%	268361-1212	
R1555	100 OHM, 0402, 63MW, 1%	268361-1000	
R1556	4.75K, 0402, 0.063W, 1%	268361-4751	
R1557	4.75K, 0402, 0.063W, 1%	268361-4751	
R1558	49.9 OHM, 0805, .125W, 1%	133625-49R9	
R1559	49.9 OHM, 0805, .125W, 1%	133625-49R9	
R1561	4.75K, 0402, 0.063W, 1%	268361-4751	
R1562	4.75K, 0402, 0.063W, 1%	268361-4751	
R1564	4.75K, 0402, 0.063W, 1%	268361-4751	
R1566	4.75K, 0402, 0.063W, 1%	268361-4751	
R6100	100 OHM, 0402, 63MW, 1%	268361-1000	
R6102	100 OHM, 0402, 63MW, 1%	268361-1000	
R6103	100 OHM, 0402, 63MW, 1%	268361-1000	
R6111	249K, 0402, 0.063W, 1%	268361-2493	
W503	0 OHM, JUMPER, 0402	280043	
W700	0 OHM, JUMPER, 0402	280043	
W900	0 OHM, JUMPER, 0402	280043	
W901	0 OHM, JUMPER, 0402	280043	
W1000	0 OHM, JUMPER, 0402	280043	
W1001	0 OHM, JUMPER, 0402	280043	
W1003	0 OHM, JUMPER, 0402	280043	
W1004	0 OHM, JUMPER, 0402	280043	
W1103	0 OHM, JUMPER, 0402	280043	
W1104	0 OHM, JUMPER, 0402	280043	

ELECTRICAL PART LIST

Wi-Fi Module PCB Assembly

Resistors (continued)

Reference Designator	Description	Part Number	Note
W1105	0 OHM, JUMPER, 0402	280043	
W1300	0 OHM, JUMPER, 0402	280043	
W1301	0 OHM, JUMPER, 0402	280043	
W1302	0 OHM, JUMPER, 0402	280043	
W1303	0 OHM, JUMPER, 0402	280043	
W1304	0 OHM, JUMPER, 0402	280043	
W1305	0 OHM, JUMPER, 0402	280043	
W1306	0 OHM, JUMPER, 0402	280043	
W1307	0 OHM, JUMPER, 0402	280043	
W1308	0 OHM, JUMPER, 0402	280043	
W1309	0 OHM, JUMPER, 0402	280043	
W1310	0 OHM, JUMPER, 0402	280043	
W1312	0 OHM, JUMPER, 0402	280043	
W1313	0 OHM, JUMPER, 0402	280043	
W1315	0 OHM, JUMPER, 0402	280043	
W1316	JUMPER, CHIP, 0603	196042	
W1317	JUMPER, CHIP, 0603	196042	
W1319	0 OHM, JUMPER, 0402	280043	
W1320	0 OHM, JUMPER, 0402	280043	
W1321	0 OHM, JUMPER, 0402	280043	
W1322	0 OHM, JUMPER, 0402	280043	
W1500	0 OHM, JUMPER, 0402	280043	

Capacitors

Reference Designator	Description	Part Number	Note
C138	10pF, COG, 0402, 5%, 50V	268364-100	
C139	10pF, COG, 0402, 5%, 50V	268364-100	
C147	10uF, X5R, 0805, 10V, 10%	354809-106K	
C148	0.1uF, X5R, 0402, 16V, 10%	313771-104C	
C149	100pF, COG, 0402, 5%, 50V	268364-101	
C150	0.22uF, X5R, 0402, 10V, 10%	342199-224	
C151	470pF, COG, 0402, 5%, 50V	268364-471	
C152	10uF, X5R, 0805, 10V, 10%	354809-106K	
C153	10uF, X5R, 0805, 10V, 10%	354809-106K	
C154	10uF, X5R, 0805, 10V, 10%	354809-106K	
C155	10uF, X5R, 0805, 10V, 10%	354809-106K	
C156	0.1uF, X5R, 0402, 16V, 10%	313771-104C	
C157	100pF, COG, 0402, 5%, 50V	268364-101	
C160	6800pF, X7R, 0402, 16V, 10%	293702-682	
C161	6800pF, X7R, 0402, 16V, 10%	293702-682	
C162	6800pF, X7R, 0402, 16V, 10%	293702-682	
C164	470pF, COG, 0402, 5%, 50V	268364-471	
C165	0.22uF, X5R, 0402, 10V, 10%	342199-224	
C167	0.22uF, X5R, 0402, 10V, 10%	342199-224	
C168	10uF, X5R, 0805, 10V, 10%	354809-106K	
C169	0.22uF, X5R, 0402, 10V, 10%	342199-224	

ELECTRICAL PART LIST

Wi-Fi Module PCB Assembly

Capacitors (continued)

Reference Designator	Description	Part Number	Note
C170	100pF, COG, 0402, 5%, 50V	268364-101	
C171	100pF, COG, 0402, 5%, 50V	268364-101	
C172	0.22uF, X5R, 0402, 10V, 10%	342199-224	
C173	0.22uF, X5R, 0402, 10V, 10%	342199-224	
C174	6800pF, X7R, 0402, 16V, 10%	293702-682	
C175	6800pF, X7R, 0402, 16V, 10%	293702-682	
C177	6800pF, X7R, 0402, 16V, 10%	293702-682	
C178	6800pF, X7R, 0402, 16V, 10%	293702-682	
C181	6800pF, X7R, 0402, 16V, 10%	293702-682	
C182	6800pF, X7R, 0402, 16V, 10%	293702-682	
C183	6800pF, X7R, 0402, 16V, 10%	293702-682	
C184	6800pF, X7R, 0402, 16V, 10%	293702-682	
C185	6800pF, X7R, 0402, 16V, 10%	293702-682	
C186	6800pF, X7R, 0402, 16V, 10%	293702-682	
C187	3.3pF, C0G, 0402, 50V, 0.25pF	317398-3R3CH	
C188	22pF, COG, 0402, 50V, 5%	268364-220	
C189	47pF, COG, 0402, 50V, 5%	268364-470	
C190	1.8pF, 0.1pF, COG, 0402, 50V	317398-1R8BH	
C191	10pF, COG, 0402, 5%, 50V	268364-100	
C192	1000pF, X7R, 0402, 16V, 10%	293702-102	
C193	1000pF, X7R, 0402, 16V, 10%	293702-102	
C194	47pF, COG, 0402, 50V, 5%	268364-470	
C195	18pF, COG, 0402, 5%, 50V	268364-180	
C196	15pF, COG, 0402, 5%, 50V	268364-150	
C197	15pF, COG, 0402, 5%, 50V	268364-150	
C198	0.01uF, X7R, 0402, 16V, 10%	293702-103	
C199	47pF, COG, 0402, 50V, 5%	268364-470	
C200	0.1uF, X7R, 0402, 16V, 10%	293702-104	
C201	0.01uF, X7R, 0402, 16V, 10%	293702-103	
C202	0.1uF, X7R, 0402, 16V, 10%	293702-104	
C203	0.1uF, X7R, 0402, 16V, 10%	293702-104	
C204	0.1uF, X7R, 0402, 16V, 10%	293702-104	
C205	0.1uF, X7R, 0402, 16V, 10%	293702-104	
C206	0.1uF, X7R, 0402, 16V, 10%	293702-104	
C207	0.1uF, X7R, 0402, 16V, 10%	293702-104	
C208	0.1uF, X7R, 0402, 16V, 10%	293702-104	
C209	0.1uF, X7R, 0402, 16V, 10%	293702-104	
C210	0.1uF, X7R, 0402, 16V, 10%	293702-104	
C211	0.01uF, X7R, 0402, 16V, 10%	293702-103	
C212	0.1uF, X7R, 0402, 16V, 10%	293702-104	
C213	0.01uF, X7R, 0402, 16V, 10%	293702-103	
C215	0.1uF, X7R, 0603, 16V, 10%	257154-104K16	
C220	0.1uF, X7R, 0402, 16V, 10%	293702-104	
C222	0.01uF, X7R, 0402, 16V, 10%	293702-103	
C223	0.01uF, X7R, 0402, 16V, 10%	293702-103	
C224	0.01uF, X7R, 0402, 16V, 10%	293702-103	
C225	0.01uF, X7R, 0402, 16V, 10%	293702-103	

ELECTRICAL PART LIST

Wi-Fi Module PCB Assembly

Capacitors (continued)

Reference Designator	Description	Part Number	Note
C226	0.1uF, X7R, 0402, 16V, 10%	293702-104	
C227	0.01uF, X7R, 0402, 16V, 10%	293702-103	
C233	0.22uF, X5R, 0402, 10V, 10%	342199-224	
C300	10uF, X5R, 0603, 6.3V, 20%	313766-106J	
C301	0.1uF, X7R, 0603, 16V, 10%	257154-104K16	
C302	10uF, X5R, 0603, 6.3V, 20%	313766-106J	
C303	10uF, X5R, 0603, 6.3V, 20%	313766-106J	
C304	0.1uF, X7R, 0603, 10%, 50V	191470-104	
C305	0.1uF, X7R, 0603, 10%, 50V	191470-104	
C307	470pF, X7R, 0402, 50V, 5%	268366-471	
C308	10uF, X5R, 0603, 6.3V, 20%	313766-106J	
C309	470pF, X7R, 0402, 50V, 5%	268366-471	
C310	0.1uF, X7R, 0402, 16V, 10%	293702-104	
C311	1uF, X7R, 0603, 16V, 10%	257154-105K16	
C312	470pF, X7R, 0402, 50V, 5%	268366-471	
C314	1500pF, X7R, 0402, 16V, 10%	293702-152	
C315	0.1uF, X7R, 0402, 16V, 10%	293702-104	
C317	0.1uF, X7R, 0402, 16V, 10%	293702-104	
C318	1500pF, X7R, 0402, 16V, 10%	293702-152	
C319	22uF, X5R, 0805, 6.3V, 20%	273592-226JM	
C320	0.1uF, X7R, 0402, 16V, 10%	293702-104	
C321	22uF, X5R, 0805, 6.3V, 20%	273592-226JM	
C323	1500pF, X7R, 0402, 16V, 10%	293702-152	
C324	0.1uF, X7R, 0402, 16V, 10%	293702-104	
C326	1500pF, X7R, 0402, 16V, 10%	293702-152	
C328	1500pF, X7R, 0402, 16V, 10%	293702-152	
C330	1500pF, X7R, 0402, 16V, 10%	293702-152	
C332	1500pF, X7R, 0402, 16V, 10%	293702-152	
C334	1500pF, X7R, 0402, 16V, 10%	293702-152	
C335	0.1uF, X7R, 0402, 16V, 10%	293702-104	
C338	1500pF, X7R, 0402, 16V, 10%	293702-152	
C340	0.1uF, X7R, 0402, 16V, 10%	293702-104	
C341	0.1uF, X7R, 0402, 16V, 10%	293702-104	
C342	1500pF, X7R, 0402, 16V, 10%	293702-152	
C343	0.1uF, X7R, 0402, 16V, 10%	293702-104	
C344	1500pF, X7R, 0402, 16V, 10%	293702-152	
C346	0.1uF, X7R, 0402, 16V, 10%	293702-104	
C347	0.1uF, X7R, 0402, 16V, 10%	293702-104	
C348	1500pF, X7R, 0402, 16V, 10%	293702-152	
C349	1500pF, X7R, 0402, 16V, 10%	293702-152	
C352	0.1uF, X7R, 0402, 16V, 10%	293702-104	
C353	0.1uF, X7R, 0402, 16V, 10%	293702-104	
C354	1500pF, X7R, 0402, 16V, 10%	293702-152	
C355	1500pF, X7R, 0402, 16V, 10%	293702-152	
C357	0.1uF, X7R, 0402, 16V, 10%	293702-104	
C358	0.1uF, X7R, 0402, 16V, 10%	293702-104	
C359	1500pF, X7R, 0402, 16V, 10%	293702-152	

ELECTRICAL PART LIST

Wi-Fi Module PCB Assembly

Capacitors (continued)

Reference Designator	Description	Part Number	Note
C361	1500pF, X7R, 0402, 16V, 10%	293702-152	
C363	1500pF, X7R, 0402, 16V, 10%	293702-152	
C364	1500pF, X7R, 0402, 16V, 10%	293702-152	
C367	1500pF, X7R, 0402, 16V, 10%	293702-152	
C368	1500pF, X7R, 0402, 16V, 10%	293702-152	
C370	1500pF, X7R, 0402, 16V, 10%	293702-152	
C371	1500pF, X7R, 0402, 16V, 10%	293702-152	
C373	0.1uF, X7R, 0402, 16V, 10%	293702-104	
C374	0.1uF, X7R, 0402, 16V, 10%	293702-104	
C376	470pF, X7R, 0402, 50V, 5%	268366-471	
C377	10uF, X5R, 0603, 6.3V, 20%	313766-106J	
C378	470pF, X7R, 0402, 50V, 5%	268366-471	
C379	10uF, X5R, 0603, 6.3V, 20%	313766-106J	
C380	0.1uF, X7R, 0603, 16V, 10%	257154-104K16	
C381	10uF, X5R, 0603, 6.3V, 20%	313766-106J	
C382	0.1uF, X7R, 0603, 16V, 10%	257154-104K16	
C383	22uF, X5R, 0805, 6.3V, 20%	273592-226JM	
C384	22uF, X5R, 0805, 6.3V, 20%	273592-226JM	
C385	10uF, X5R, 0603, 6.3V, 20%	313766-106J	
C386	0.1uF, X7R, 0603, 16V, 10%	257154-104K16	
C400	0.1uF, X7R, 0402, 16V, 10%	293702-104	
C401	0.01uF, X7R, 0402, 16V, 10%	293702-103	
C402	0.1uF, X7R, 0402, 16V, 10%	293702-104	
C403	0.01uF, X7R, 0402, 16V, 10%	293702-103	
C404	0.1uF, X7R, 0402, 16V, 10%	293702-104	
C405	0.01uF, X7R, 0402, 16V, 10%	293702-103	
C406	0.1uF, X7R, 0402, 16V, 10%	293702-104	
C407	0.01uF, X7R, 0402, 16V, 10%	293702-103	
C408	0.1uF, X7R, 0402, 16V, 10%	293702-104	
C409	0.01uF, X7R, 0402, 16V, 10%	293702-103	
C410	0.1uF, X7R, 0402, 16V, 10%	293702-104	
C411	0.01uF, X7R, 0402, 16V, 10%	293702-103	
C412	0.1uF, X7R, 0402, 16V, 10%	293702-104	
C413	0.01uF, X7R, 0402, 16V, 10%	293702-103	
C414	0.1uF, X7R, 0402, 16V, 10%	293702-104	
C415	0.01uF, X7R, 0402, 16V, 10%	293702-103	
C416	0.1uF, X7R, 0402, 16V, 10%	293702-104	
C417	0.01uF, X7R, 0402, 16V, 10%	293702-103	
C418	0.01uF, X7R, 0402, 16V, 10%	293702-103	
C419	0.01uF, X7R, 0402, 16V, 10%	293702-103	
C420	0.01uF, X7R, 0402, 16V, 10%	293702-103	
C421	0.01uF, X7R, 0402, 16V, 10%	293702-103	
C422	0.1uF, X7R, 0402, 16V, 10%	293702-104	
C423	0.1uF, X7R, 0402, 16V, 10%	293702-104	
C424	0.1uF, X7R, 0402, 16V, 10%	293702-104	
C425	0.1uF, X7R, 0402, 16V, 10%	293702-104	
C426	0.1uF, X7R, 0402, 16V, 10%	293702-104	

ELECTRICAL PART LIST

Wi-Fi Module PCB Assembly

Capacitors (continued)

Reference Designator	Description	Part Number	Note
C427	0.1uF, X7R, 0402, 16V, 10%	293702-104	
C428	0.1uF, X7R, 0402, 16V, 10%	293702-104	
C429	0.1uF, X7R, 0402, 16V, 10%	293702-104	
C430	0.1uF, X7R, 0402, 16V, 10%	293702-104	
C431	0.1uF, X7R, 0402, 16V, 10%	293702-104	
C432	22uF, X5R, 0805, 6.3V, 20%	273592-226JM	
C433	22uF, X5R, 0805, 6.3V, 20%	273592-226JM	
C434	0.1uF, X7R, 0402, 16V, 10%	293702-104	
C435	0.1uF, X7R, 0402, 16V, 10%	293702-104	
C500	0.1uF, X7R, 0603, 10%, 50V	191470-104	
C501	100pF, COG, 0402, 5%, 50V	268364-101	
C502	100pF, COG, 0402, 5%, 50V	268364-101	
C503	100pF, COG, 0402, 5%, 50V	268364-101	
C504	0.1uF, X5R, 0402, 16V, 10%	313771-104C	
C505	15pF, COG, 0402, 5%, 50V	268364-150	
C506	0.1uF, X5R, 0402, 16V, 10%	313771-104C	
C507	15nF, X7R, 0402, 16V, 5%	296732-153	
C508	15nF, X7R, 0402, 16V, 5%	296732-153	
C509	100pF, COG, 0402, 5%, 50V	268364-101	
C510	10uF, X5R, 0603, 6.3V, 20%	313766-106J	
C511	100pF, COG, 0402, 5%, 50V	268364-101	
C512	100pF, COG, 0402, 5%, 50V	268364-101	
C513	100pF, COG, 0402, 5%, 50V	268364-101	
C514	15pF, COG, 0402, 5%, 50V	268364-150	
C515	1000pF, COG, 0402, 5%, 50V	268364-102	
C516	100pF, COG, 0402, 5%, 50V	268364-101	
C517	100pF, COG, 0402, 5%, 50V	268364-101	
C518	0.1uF, X5R, 0402, 16V, 10%	313771-104C	
C519	0.1uF, X5R, 0402, 16V, 10%	313771-104C	
C521	100pF, COG, 0402, 5%, 50V	268364-101	
C601	10uF, X5R, 0603, 6.3V, 20%	313766-106J	
C602	100pF, COG, 0402, 5%, 50V	268364-101	
C604	100pF, COG, 0402, 5%, 50V	268364-101	
C607	100pF, COG, 0402, 5%, 50V	268364-101	
C700	0.1uF, X7R, 0402, 16V, 10%	293702-104	
C701	0.1uF, X7R, 0402, 16V, 10%	293702-104	
C702	10nF, X7R, 0402, 25V, 5%	268367-103	
C703	10nF, X7R, 0402, 25V, 5%	268367-103	
C704	10nF, X7R, 0402, 25V, 5%	268367-103	
C705	10nF, X7R, 0402, 25V, 5%	268367-103	
C706	100pF, COG, 0402, 5%, 50V	268364-101	
C707	100pF, COG, 0402, 5%, 50V	268364-101	
C708	0.1uF, X7R, 0402, 16V, 10%	293702-104	
C709	0.1uF, X7R, 0402, 16V, 10%	293702-104	
C710	0.1uF, X7R, 0402, 16V, 10%	293702-104	
C711	0.1uF, X7R, 0402, 16V, 10%	293702-104	
C712	0.1uF, X7R, 0402, 16V, 10%	293702-104	

ELECTRICAL PART LIST

Wi-Fi Module PCB Assembly

Capacitors (continued)

Reference Designator	Description	Part Number	Note
C713	0.1uF, X7R, 0402, 16V, 10%	293702-104	
C714	0.1uF, X7R, 0402, 16V, 10%	293702-104	
C715	0.1uF, X7R, 0402, 16V, 10%	293702-104	
C716	0.1uF, X7R, 0402, 16V, 10%	293702-104	
C717	1000pF, COG, 0402, 5%, 50V	268364-102	
C718	0.1uF, X7R, 0402, 16V, 10%	293702-104	
C719	10uF, X5R, 0603, 6.3V, 20%	313766-106J	
C720	10uF, X5R, 0603, 6.3V, 20%	313766-106J	
C721	10uF, X5R, 0603, 6.3V, 20%	313766-106J	
C746	0.01uF, X7R, 0402, 16V, 10%	293702-103	
C748	10nF, X7R, 0402, 25V, 5%	268367-103	
C749	10nF, X7R, 0402, 25V, 5%	268367-103	
C750	10nF, X7R, 0402, 25V, 5%	268367-103	
C751	10nF, X7R, 0402, 25V, 5%	268367-103	
C752	0.01uF, X7R, 0402, 16V, 10%	293702-103	
C768	10nF, X7R, 0402, 25V, 5%	268367-103	
C769	10nF, X7R, 0402, 25V, 5%	268367-103	
C771	10nF, X7R, 0402, 25V, 5%	268367-103	
C772	0.01uF, X7R, 0402, 16V, 10%	293702-103	
C773	10nF, X7R, 0402, 25V, 5%	268367-103	
C774	10nF, X7R, 0402, 25V, 5%	268367-103	
C775	10nF, X7R, 0402, 25V, 5%	268367-103	
C776	10nF, X7R, 0402, 25V, 5%	268367-103	
C777	10nF, X7R, 0402, 25V, 5%	268367-103	
C778	0.01uF, X7R, 0402, 16V, 10%	293702-103	
C779	10nF, X7R, 0402, 25V, 5%	268367-103	
C780	10nF, X7R, 0402, 25V, 5%	268367-103	
C781	10nF, X7R, 0402, 25V, 5%	268367-103	
C782	10nF, X7R, 0402, 25V, 5%	268367-103	
C783	0.01uF, X7R, 0402, 16V, 10%	293702-103	
C784	10nF, X7R, 0402, 25V, 5%	268367-103	
C785	10nF, X7R, 0402, 25V, 5%	268367-103	
C786	10nF, X7R, 0402, 25V, 5%	268367-103	
C787	0.01uF, X7R, 0402, 16V, 10%	293702-103	
C788	10nF, X7R, 0402, 25V, 5%	268367-103	
C789	10nF, X7R, 0402, 25V, 5%	268367-103	
C790	10nF, X7R, 0402, 25V, 5%	268367-103	
C791	10nF, X7R, 0402, 25V, 5%	268367-103	
C792	10nF, X7R, 0402, 25V, 5%	268367-103	
C793	10nF, X7R, 0402, 25V, 5%	268367-103	
C794	10nF, X7R, 0402, 25V, 5%	268367-103	
C795	10nF, X7R, 0402, 25V, 5%	268367-103	
C796	10nF, X7R, 0402, 25V, 5%	268367-103	
C797	10nF, X7R, 0402, 25V, 5%	268367-103	
C798	10nF, X7R, 0402, 25V, 5%	268367-103	
C799	10nF, X7R, 0402, 25V, 5%	268367-103	
C900	0.01uF, X7R, 0402, 16V, 10%	293702-103	

ELECTRICAL PART LIST

Wi-Fi Module PCB Assembly

Capacitors (continued)

Reference Designator	Description	Part Number	Note
C901	0.01uF, X7R, 0402, 16V, 10%	293702-103	
C902	0.01uF, X7R, 0402, 16V, 10%	293702-103	
C1003	10uF, X5R, 0603, 6.3V, 20%	313766-106J	
C1006	3.3uF, X5R, 0603, 20%, 6.3V	313766-335J	
C1007	3.3uF, X5R, 0603, 20%, 6.3V	313766-335J	
C1009	10uF, X5R, 0603, 6.3V, 20%	313766-106J	
C1011	10pF, COG, 0402, 5%, 50V	268364-100	
C1012	10pF, COG, 0402, 5%, 50V	268364-100	
C1013	10uF, X5R, 0603, 6.3V, 20%	313766-106J	
C1014	220pF, COG, 0402, 5%, 50V	268364-221	
C1015	10uF, X5R, 0603, 6.3V, 20%	313766-106J	
C1016	0.1uF, X7R, 0402, 16V, 10%	293702-104	
C1017	1000pF, X7R, 0402, 16V, 10%	293702-102	
C1018	1000pF, X7R, 0402, 16V, 10%	293702-102	
C1019	1000pF, X7R, 0402, 16V, 10%	293702-102	
C1020	1000pF, X7R, 0402, 16V, 10%	293702-102	
C1021	0.1uF, X7R, 0402, 16V, 10%	293702-104	
C1022	220pF, COG, 0402, 5%, 50V	268364-221	
C1023	220pF, COG, 0402, 5%, 50V	268364-221	
C1024	0.1uF, X7R, 0402, 16V, 10%	293702-104	
C1025	47pF, COG, 0402, 50V, 5%	268364-470	
C1026	1uF, X5R, 0402, 10%, 10V	313771-105A	
C1027	47pF, COG, 0402, 50V, 5%	268364-470	
C1028	1000pF, COG, 0402, 5%, 50V	268364-102	
C1029	100pF, COG, 0402, 5%, 50V	268364-101	
C1030	100pF, COG, 0402, 5%, 50V	268364-101	
C1031	100pF, COG, 0402, 5%, 50V	268364-101	
C1032	100pF, COG, 0402, 5%, 50V	268364-101	
C1100	3.3uF, X5R, 0603, 20%, 6.3V	313766-335J	
C1101	470pF, X7R, 0402, 50V, 5%	268366-471	
C1102	470pF, X7R, 0402, 50V, 5%	268366-471	
C1103	22pF, COG, 0402, 50V, 5%	268364-220	
C1104	150pF, X7R, 0402, 16V, 10%	293702-151	
C1105	0.1uF, X7R, 0603, 10%, 50V	191470-104	
C1107	150pF, X7R, 0402, 16V, 10%	293702-151	
C1108	150pF, X7R, 0402, 16V, 10%	293702-151	
C1109	10uF, X5R, 0603, 6.3V, 20%	313766-106J	
C1110	150pF, X7R, 0402, 16V, 10%	293702-151	
C1111	150pF, X7R, 0402, 16V, 10%	293702-151	
C1112	0.1uF, X7R, 0603, 10%, 50V	191470-104	
C1113	150pF, X7R, 0402, 16V, 10%	293702-151	
C1114	10uF, X5R, 0603, 6.3V, 20%	313766-106J	
C1115	100pF, COG, 0402, 5%, 50V	268364-101	
C1116	100pF, COG, 0402, 5%, 50V	268364-101	
C1117	3.3uF, X5R, 0603, 20%, 6.3V	313766-335J	
C1200	100pF, COG, 0402, 5%, 50V	268364-101	
C1201	1000pF, COG, 0402, 5%, 50V	268364-102	

ELECTRICAL PART LIST

Wi-Fi Module PCB Assembly

Capacitors (continued)

Reference Designator	Description	Part Number	Note
C1202	100pF, COG, 0402, 5%, 50V	268364-101	
C1203	100pF, COG, 0402, 5%, 50V	268364-101	
C1204	100pF, COG, 0402, 5%, 50V	268364-101	
C1205	100pF, COG, 0402, 5%, 50V	268364-101	
C1206	100pF, COG, 0402, 5%, 50V	268364-101	
C1207	100pF, COG, 0402, 5%, 50V	268364-101	
C1208	100pF, COG, 0402, 5%, 50V	268364-101	
C1209	100pF, COG, 0402, 5%, 50V	268364-101	
C1210	100pF, COG, 0402, 5%, 50V	268364-101	
C1211	100pF, COG, 0402, 5%, 50V	268364-101	
C1212	100pF, COG, 0402, 5%, 50V	268364-101	
C1213	100pF, COG, 0402, 5%, 50V	268364-101	
C1214	100pF, COG, 0402, 5%, 50V	268364-101	
C1215	100pF, COG, 0402, 5%, 50V	268364-101	
C1216	100pF, COG, 0402, 5%, 50V	268364-101	
C1217	100pF, COG, 0402, 5%, 50V	268364-101	
C1218	100pF, COG, 0402, 5%, 50V	268364-101	
C1221	100pF, COG, 0402, 5%, 50V	268364-101	
C1222	100pF, COG, 0402, 5%, 50V	268364-101	
C1223	100pF, COG, 0402, 5%, 50V	268364-101	
C1224	100pF, COG, 0402, 5%, 50V	268364-101	
C1225	100pF, COG, 0402, 5%, 50V	268364-101	
C1226	4.7uF, CER, 1210, X7R, 25V	291431-475	
C1227	100pF, COG, 0402, 5%, 50V	268364-101	
C1228	100pF, COG, 0402, 5%, 50V	268364-101	
C1229	100pF, COG, 0402, 5%, 50V	268364-101	
C1230	100pF, COG, 0402, 5%, 50V	268364-101	
C1231	100pF, COG, 0402, 5%, 50V	268364-101	
C1232	100pF, COG, 0402, 5%, 50V	268364-101	
C1233	100pF, COG, 0402, 5%, 50V	268364-101	
C1234	100pF, COG, 0402, 5%, 50V	268364-101	
C1235	100pF, COG, 0402, 5%, 50V	268364-101	
C1236	1000pF, COG, 0402, 5%, 50V	268364-102	
C1237	1000pF, COG, 0402, 5%, 50V	268364-102	
C1300	100nF, X7R, 0402, 16V, 5%	296732-104	
C1301	10uF, X5R, 0603, 6.3V, 20%	313766-106J	
C1302	2.2uF, X5R, 0402, 20%, 6.3V	313771-225JM	
C1303	10uF, X5R, 0603, 6.3V, 20%	313766-106J	
C1304	2.2uF, X5R, 0402, 20%, 6.3V	313771-225JM	
C1305	10uF, X5R, 0603, 6.3V, 20%	313766-106J	
C1306	2.2uF, X5R, 0402, 20%, 6.3V	313771-225JM	
C1307	10uF, X5R, 0603, 6.3V, 20%	313766-106J	
C1308	2.2uF, X5R, 0402, 20%, 6.3V	313771-225JM	
C1309	10uF, X5R, 0603, 6.3V, 20%	313766-106J	
C1310	2.2uF, X5R, 0402, 20%, 6.3V	313771-225JM	
C1311	10uF, X5R, 0603, 6.3V, 20%	313766-106J	
C1312	2.2uF, X5R, 0402, 20%, 6.3V	313771-225JM	

ELECTRICAL PART LIST

Wi-Fi Module PCB Assembly

Capacitors (continued)

Reference Designator	Description	Part Number	Note
C1313	2.2uF, X5R, 0402, 6.3V, 20%	313771-225JM	
C1314	2.2uF, X5R, 0402, 6.3V, 20%	313771-225JM	
C1315	2.2uF, X5R, 0402, 6.3V, 20%	313771-225JM	
C1316	2.2uF, X5R, 0402, 6.3V, 20%	313771-225JM	
C1317	2.2uF, X5R, 0402, 6.3V, 20%	313771-225JM	
C1318	4.7uF, CER, 1210, X7R, 25V	291431-475	
C1319	0.1uF, X7R, 0603, 10%, 50V	304991-104	
C1320	10uF, X5R, 0603, 6.3V, 20%	313766-106J	
C1321	2.2uF, X5R, 0402, 6.3V, 20%	313771-225JM	
C1322	10uF, X5R, 0603, 6.3V, 20%	313766-106J	
C1323	2.2uF, X5R, 0402, 6.3V, 20%	313771-225JM	
C1324	10uF, X5R, 0603, 6.3V, 20%	313766-106J	
C1325	10uF, X5R, 0603, 6.3V, 20%	313766-106J	
C1326	2.2uF, X5R, 0402, 6.3V, 20%	313771-225JM	
C1328	10uF, X5R, 0603, 6.3V, 20%	313766-106J	
C1329	10uF, X5R, 0603, 6.3V, 20%	313766-106J	
C1330	10uF, X5R, 0603, 6.3V, 20%	313766-106J	
C1331	100nF, X7R, 0402, 16V, 5%	296732-104	
C1332	100nF, X7R, 0402, 16V, 5%	296732-104	
C1333	1uF, X5R, 0402, 10%, 10V	313771-105A	
C1335	1000pF, X7R, 0402, 16V, 10%	293702-102	
C1336	1000pF, X7R, 0402, 16V, 10%	293702-102	
C1337	1000pF, X7R, 0402, 16V, 10%	293702-102	
C1338	1000pF, X7R, 0402, 16V, 10%	293702-102	
C1339	1000pF, X7R, 0402, 16V, 10%	293702-102	
C1340	1000pF, X7R, 0402, 16V, 10%	293702-102	
C1500	1000pF, COG, 0402, 5%, 50V	268364-102	
C1501	1000pF, COG, 0402, 5%, 50V	268364-102	
C1502	100pF, COG, 0402, 5%, 50V	268364-101	
C1503	1000pF, COG, 0402, 5%, 50V	268364-102	
C1508	0.1uF, X7R, 0603, 10%, 50V	191470-104	
C1509	0.1uF, X7R, 0603, 10%, 50V	191470-104	
C1510	470pF, X7R, 0402, 50V, 5%	268366-471	
C1511	4.7uF, X5R, 0603, 10V, 20%	313766-475A	
C1512	1uF, 0805, X7R, 10%, 25V	181264-105	
C1513	0.1uF, X7R, 0603, 10%, 50V	191470-104	
C1514	0.1uF, X7R, 0603, 10%, 50V	191470-104	
C1515	1206, X7R, 10V, 10%, 10uF	260361-1062	
C1516	0.1uF, X7R, 0603, 10%, 50V	191470-104	
C1517	1.0nF, 0603, COG, SMD, 25V, 5%	268368-102	
C1518	1.0nF, 0603, COG, SMD, 25V, 5%	268368-102	
C1519	1000pF, X7R, 1206, 2000V, 20%	359294-102M	
C7100	10nF, X7R, 0402, 25V, 5%	268367-103	
C7101	10nF, X7R, 0402, 25V, 5%	268367-103	
C7102	10nF, X7R, 0402, 25V, 5%	268367-103	
C7103	10nF, X7R, 0402, 25V, 5%	268367-103	
C7104	10nF, X7R, 0402, 25V, 5%	268367-103	

ELECTRICAL PART LIST

Wi-Fi Module PCB Assembly

Capacitors (continued)

Reference Designator	Description	Part Number	Note
C7105	10nF, X7R, 0402, 25V, 5%	268367-103	
C7106	10nF, X7R, 0402, 25V, 5%	268367-103	
C7107	10nF, X7R, 0402, 25V, 5%	268367-103	
C7108	10nF, X7R, 0402, 25V, 5%	268367-103	
C7109	10nF, X7R, 0402, 25V, 5%	268367-103	
C7110	10nF, X7R, 0402, 25V, 5%	268367-103	
C7111	10nF, X7R, 0402, 25V, 5%	268367-103	
C7112	10nF, X7R, 0402, 25V, 5%	268367-103	
C7113	10nF, X7R, 0402, 25V, 5%	268367-103	

Ferrite Beads

Reference Designator	Description	Part Number	Note
FB300	BEAD, FERRITE, 0805, 1.5A, 330 OHM	267539-331	
FB301	FERRITE BEAD, CHIP, 0603, 120 OHM	259925-121	
FB302	FERRITE BEAD, CHIP, 0603, 120 OHM	259925-121	
FB303	FERRITE BEAD, CHIP, 0603, 120 OHM	259925-121	
FB304	FERRITE BEAD, CHIP, 0603, 120 OHM	259925-121	
FB305	FERRITE BEAD, CHIP, 0603, 120 OHM	259925-121	
FB306	FERRITE BEAD, CHIP, 0603, 120 OHM	259925-121	
FB307	BEAD, FERRITE, 0805, 1.5A, 330OHM	267539-331	
FB900	BEAD, FERRITE, 0402, 120 OHM, 0.3A	324216-121B	
FB1100	BEAD, FERRITE, 0402, 120 OHM, 0.3A	324216-121B	
FB1101	BEAD, FERRITE, 0402, 120 OHM, 0.3A	324216-121B	
FB1102	BEAD, FERRITE, 0402, 120 OHM, 0.3A	324216-121B	
FB1103	BEAD, FERRITE, 0402, 120 OHM, 0.3A	324216-121B	
FB1104	BEAD, FERRITE, 0402, 120 OHM, 0.3A	324216-121B	
FB1106	BEAD, FERRITE, 0402, 120 OHM, 0.3A	324216-121B	
FB1107	BEAD, FERRITE, 0402, 120 OHM, 0.3A	324216-121B	
FB1202	FERRITE BEAD, CHIP, 0603, 120 OHM	259925-121	
FB1203	FERRITE BEAD, CHIP, 0603, 120 OHM	259925-121	
FB1300	FERRITE BEAD, 1206, 120 OHM	326348-121	
FB1502	FERRITE BEAD, CHIP, 0603, 120 OHM	259925-121	
FB1503	BEAD, FERRITE, 0805, 1.5A, 330 OHM	267539-331	

Inductors

Reference Designator	Description	Part Number	Note
L18	FERRITE, BEAD, 0603, BLM18P, 120 OHMS	302257-121	
L22	INDUCTOR, HI FREQ, 0402, 125C, 4.7nH	354810-4R7S	
L24	INDUCTOR, HI FREQ, 0402, 125C, 1.8nH	354810-1R8S	
L38	0 OHM, JUMPER, 0402	280043	
L1200	INDUCTOR, 0504, 90 OHMS, 150mA, C- MODE	324381-090D	
L1300	INDUCTOR, POWER, 2520, 125C, 20%, 4.7uH	348739-4R7M	
L1301	INDUCTOR, POWER, 2520, 125C, 20%, 2.2uH	348739-2R2M	
L1302	INDUCTOR, POWER, 2520, 125C, 20%, 2.2uH	348739-2R2M	

ELECTRICAL PART LIST

Wi-Fi Module PCB Assembly

Inductors (continued)

Reference Designator	Description	Part Number	Note
L1303	INDUCTOR, POWER, 2520, 125C, 20%, 2.2uH	348739-2R2M	
L1304	INDUCTOR, POWER, 2520, 125C, 20%, 2.2uH	348739-2R2M	
L1305	INDUCTOR, POWER, 2520, 125C, 20%, 2.2uH	348739-2R2M	
L1306	INDUCTOR, POWER, 2520, 125C, 20%, 2.2uH	348739-2R2M	

Diodes

Reference Designator	Description	Part Number	Note
D500	SOT-23, BAV 99	147239	
D501	SOT-23, BAV 99	147239	
D502	SOT-23, BAV 99	147239	
D601	SOT-23, BAV 99	147239	
D1000	SOT-23, BAV 99	147239	
D1001	SOT-23, BAV 99	147239	
D1101	SWITCHING, 100V, BAV99, SOT363	319113-001	
D1200	SOT-23, BAV 99	147239	
D1201	SOT-23, BAV 99	147239	
D1300	SCHOTTKY, SC70, 30V, SINGLE	268381-001	
D1301	SCHOTTKY, DUAL, SERIES, 20V, SOT-23	342827-0010	
D1302	SCHOTTKY, SC70, 30V, SINGLE	268381-001	

Transistors

Reference Designator	Description	Part Number	Note
Q500	BPLR, N, 40V, 200mA, SOT23	146819	
Q501	MOSFET, P-CH, 3.8A, 30V, SOT-23	348008-0010	
Q600	BPLR, P, 40V, 200mA, SOT23	148596	
Q601	N, MFET, 2.5V, SOT-23	252043	
Q602	BPLR, P, 40V, 200mA, SOT23	148596	
Q1300	MOSFET, N-CHAN, 2N7002, SOT523	309607-001	

Integrated Circuits

Reference Designator	Description	Part Number	Note
U5	POWER AMP, 2.4GHz, SST12LP15A, 16VQFN	353372-0010	
U7	RF TRANSCEIVER, 2.4GHz, T6201C, QFN48	353400-0010	
U8	FILTER, BALUN, 2.4GHz, HHM1711D1, 0603-6	353392-0010	
U22	FILTER, BANDPASS, 0603-4, 2.4GHz	353361-0010	
U23	FILTER, BANDPASS, 0603-4, 2.4GHz	353361-0010	
U28	ANALOG SW, 6GHz, DPDT, HWS410, 12QFN	353365-0010	
U100	SoC, MEDIA PROC, DM870A, 320LFBGA	354024-0010	
U200	MEM, FLASH, NOR, 3.6V, 70nS, 64Mb, 64LFBGA	-	
U203	MEM, SDRAM, 3.3V, 167MHz, 128Mb, VFBGA54	353272-0082	
U203A	PAD, THERMAL, CONDUCTIVE	371259-0010	
U301	CODEC, AUDIO, W/DSP, 32b, 192kHz, 40WQFN	353341-0010	
U401	MEM, SDRAM, DDR3, 64Mbx16, 1.25nS, 96FBGA	353178-0110	
U401A	PAD, THERMAL, CONDUCTIVE	371259-0010	

ELECTRICAL PART LIST

Wi-Fi Module PCB Assembly
Integrated Circuits (continued)

Reference Designator	Description	Part Number	Note
U402	MEM, FLASH, NAND, 1.8V, 2GbX8, 63VFBGA	-	
U500	SoC, ARM A8, 105C, 1.1V, 600MHz, 324PBGA	369713-0040	
U500A	PAD, THERMAL, CONDUCTIVE	371259-0010	
U501	AUTHC, COPROCESSOR, APPLE, 2.0C (AIRPLAY ONLY, NOT USED ON NON-AIRPLAY)	351292-0010	
U502	LOGIC, BUFFER, SNGL, 5V, 74LVC1G07, SC70	626946-0010	
U503	VLEVEL, TRANSLATOR, CONFIG., SOT-23	326120-0010	
U602	SCHMITT TRIGGER, INVERT, 5V	310791-001	
U604	INVERTER, DUAL, 50mA, 5V	280293-001	
U700	LINEAR REG, TPS51200, DDR TERMINATION	319515-001	
U1000	SoC, BLUETOOTH, 2.4GHz, CC2540F256, 40QFN	-	
U100A	PAD, THERMAL, CONDUCTIVE	371259-0010	
U1101	DAC, 192kHz, 24Bit, 2ch, AK4384	299344-001	
U1105	STEREO ADC, 24-Bit, 192kHz	307160-001	
U1200	INVERTER, DUAL, 50mA, 5V	280293-001	
U1300	PWR MNGMT, Li-ION, TPS650250, 32QFN	347568-0010	
U1301	LOG SCHMITT INV, DUAL, 74LVC2G14, SC70	310351-002	
U1302	VOLT REG, SW, ADJ, DC-DC, TPS65910, 48QFN	354002-0010	
U1500	ETHERNET, PHYSICAL, LAN, TxRx, 24-QFN	353306-0010	

Miscellaneous

Reference Designator	Description	Part Number	Note
CON3	CONN., RF, COAXIAL, WITH SWITCH	316679-001	
CON4	CONN., RF, COAXIAL, WITH SWITCH	316679-001	
FL1000	FILTER, CERAMIC, BAND PASS, 2.45GHz, 0603-6	354643-0010	
J1200	CONN, FFC, 0.5mm, S ENTRY, 10POS, IVRY	349234-0010	
J1201	CONN, FFC, 0.5mm, S ENTRY, 31POS, W/SHIELD	310623-031	
J1202	CONN, FFC, 0.5mm, SMT, S ENTRY, 12 POS, IVRY	349234-0012	
J1203	CONN, FFC, 0.5mm, S ENTRY, 40 POS	310573-040	
J900	CONN., RF, COAXIAL, WITH SWITCH	316679-001	
SHLD1	SHIELD, RF MODULE, TOP FRAME	353966-0010	
SHLD1-TOP	SHIELD, RF MODULE, TOP COVER	353965-0010	
SHLD2	SHIELD, RF MODULE, BOTTOM FRAME	353968-0010	
SHLD2-BOT	SHIELD, RF MODULE, BOTTOM COVER	353967-0010	
SHLD300	SHIELD, FENCE, DSP	355254-0010	
SHLD300-TOP	SHIELD, COVER, DSP	355249-0010	
SHLD301	SHIELD, FENCE, DSP	355254-0010	
SHLD301-BOT	SHIELD, COVER, DSP	355249-0010	
SHLD400	SHIELD, FENCE, BT, TOP	355262-0010	
SHLD400-TOP	SHIELD, COVER, BT, TOP	355261-0010	
SHLD401	SHIELD, FENCE, BT, BOTTOM	355259-0010	
SHLD401-BOT	SHIELD, COVER, BT, BOTTOM	355257-0010	
VR1100	TVS, ESD, 24 VDC, 0603	352782-0010	
VR1101	TVS, ESD, 24 VDC, 0603	352782-0010	
VR1102	TVS, ESD, 24 VDC, 0603	352782-0010	
W1	47pF, COG, 0402, 50V, 5%	268364-470	
W2	47pF, COG, 0402, 50V, 5%	268364-470	

ELECTRICAL PART LIST

Wi-Fi Module PCB Assembly

Miscellaneous (continued)

Reference Designator	Description	Part Number	Note
X1000	CRYSTAL, FUND, 12pF, 12PPM, 32MHz	291429-026	
X500	CRYSTAL, FUND, 12pF, 50PPM, 24MHz	291429-027	
XFMR1500	TRANSFORMER, CHOKE, 10/100 BASE-T, SMT	356073-0010	
Y3	CRYSTAL, SMT, 10PPM, 50MHz	353398-0010	

Input / Output PCB Assembly

Resistors

Reference Designator	Description	Part Number	Note
R200	2.49K, 0805, .125W, 1%	133625-2491	
R201	100K, 0603, .1W, 1%	191465-1003	
R204	10K, 0603, .1W, 5%	199403-103	
R205	100 OHM, 0603, .1W, 1%	191465-1000	
R206	1K, 0603, .1W, 1%	191465-1001	
R207	20 OHM, 0603, .1W, 1%	191465-20R0	
R208	17.8K, 0603, 0.1W, 1%	191465-1782	
R209	17.8K, 0603, 0.1W, 1%	191465-1782	
R210	2.49K, 0805, .125W, 1%	133625-2491	
R211	10K, 0603, .1W, 1%	191465-1002	
R212	20 OHM, 0603, .1W, 1%	191465-20R0	
R213	20 OHM, 0603, .1W, 1%	191465-20R0	
R214	9.09K, 0603, .1W, 1%	191465-9091	
R215	1K, 0603, .1W, 1%	191465-1001	
R216	200 OHM, 0603, .1W, 1%	191465-2000	
R217	10K, 0603, .1W, 5%	199403-103	
R300	120 OHMS, 0603, .1W, 5%	199403-121	
R301	100K, 0603, .1W, 1%	191465-1003	
R302	100 OHM, 0603, .1W, 1%	191465-1000	
R303	10K, 0603, .1W, 5%	199403-103	
R304	100K, 0603, .1W, 1%	191465-1003	
R305	75 OHM, 0402, 63MW, 1%	268361-75R0	
R306	75 OHM, 0402, 63MW, 1%	268361-75R0	
R307	5.49K, 0402, 63MW, 1%	268361-5491	
R308	10.0K, 0402, 63MW, 1%	268361-1002	
R309	100K, 0603, .1W, 1%	191465-1003	
R312	10K, 0603, .1W, 1%	191465-1002	
R316	100K, 0603, .1W, 1%	191465-1003	
R400	100K, 0603, .1W, 1%	191465-1003	
R401	100K, 0402, 63MW, 1%	268361-1003	
R402	30.1K, 0402, 63MW, 1%	268361-3012	
R403	16.2K, 0402, 63MW, 1%	268361-1622	
R404	2.00K, 0402, 63MW, 1%	268361-2001	
R405	100K, 0402, 63MW, 1%	268361-1003	
R406	49.9K, 0603, .1W, 1%	191465-4992	
R407	1K, 0603, .1W, 5%	199403-102	
R408	2.49K, 0603, .1W, 1%	191465-2491	

ELECTRICAL PART LIST

Input / Output PCB Assembly

Resistors (continued)

Reference Designator	Description	Part Number	Note
R409	0.051 OHM, 0805, .25W, 5%	317342-R051	
R410	0.33 OHM, 0805, 100mW, 1%	268386-R33	
R411	10K, 0603, .1W, 1%	191465-1002	
R412	1.00K, 0402, 63mW, 1%	268361-1001	
R413	1 OHM, 0402, 0.063W, 1%	268361-1R00	
W301	JUMPER, CHIP, 0603	196042	
W302	JUMPER, CHIP, 0603	196042	
W303	JUMPER, CHIP, 0603	196042	
W304	JUMPER, CHIP, 0603	196042	
W401	JUMPER, CHIP, 0603	196042	
W403	JUMPER, CHIP, 0603	196042	
W404	JUMPER, CHIP, 0603	196042	

Capacitors

Reference Designator	Description	Part Number	Note
C200	100pF, C0G, 0603, 50V, 5%	188454-101	
C201	100pF, C0G, 0603, 50V, 5%	188454-101	
C202	100pF, C0G, 0603, 50V, 5%	188454-101	
C203	0.10uF, 0603, 16V, 5%	258498-104	
C204	470pF, 0603, X7R, 50V	191470-471	
C205	0.10uF, 0603, 16V, 5%	258498-104	
C206	1000pF, C0G, 0603, 50V, 5%	188454-102	
C207	1000pF, 0603, X7R, 50V	191470-102	
C208	100pF, C0G, 0603, 50V, 5%	188454-101	
C209	100pF, C0G, 0603, 50V, 5%	188454-101	
C210	0.10uF, 0603, 16V, 5%	258498-104	
C211	47pF, COG, 0402, 50V, 5%	268364-470	
C212	47pF, COG, 0402, 50V, 5%	268364-470	
C301	0.1uF, X7R, 0603, 10%, 50V	191470-104	
C302	1000pF, X7R, 1206, 2000V, 20%	359294-102M	
C303	0.1uF, X7R, 0603, 10%, 50V	191470-104	
C304	0.1uF, X7R, 0603, 10%, 50V	191470-104	
C305	10uF, X5R, 0805, 25V, 10%	273592-106E	
C306	10uF, X5R, 0805, 25V, 10%	273592-106E	
C307	5.1pF 0.25pF, COG, 0402, 50V	317398-5R1CH	
C308	5.1pF 0.25pF, COG, 0402, 50V	317398-5R1CH	
C309	5.1pF 0.25pF, COG, 0402, 50V	317398-5R1CH	
C310	5.1pF 0.25pF, COG, 0402, 50V	317398-5R1CH	
C311	100uF, EL, SMD, 105C, 16V, 20%	306169-101CF	
C401	470pF, COG, 0402, 5%, 50V	268364-471	
C402	0.1uF, X7R, 0603, 10%, 50V	191470-104	
C403	68pF, COG, 0402, 50V, 5%	268364-680	
C404	3.3nF, X7R, 0402, 25V, 5%	268367-332	
C405	680pF, C0G, 0402, 50V, 5%	268364-681	
C406	1000pF, 0603, X7R, 50V	191470-102	
C407	100pF, C0G, 0603, 50V, 5%	188454-101	

ELECTRICAL PART LIST

Input / Output PCB Assembly
Capacitors (continued)

Reference Designator	Description	Part Number	Note
C408	0.1uF, X7R, 0603, 10%, 50V	304991-104	
C409	3300pF, 0603, X7R, 50V	191470-332	
C410	100uF, EL, 105C, SMT, LOW ESR, 35V	311606-101V	
C411	1000pF, 0603, X7R, 50V	191470-102	
C412	100uF, CER, 1206, X5R, 6.3V	291432-107	
C413	1000pF, 0603, X7R, 50V	191470-102	
C414	330pF, 0603, X7R, 50V	191470-331	
C415	1000pF, 0603, X7R, 50V	191470-102	
C416	150pF, C0G, 0603, 50V, 5%	188454-151	
C417	1uF, X7R, 1210, 50V, 10%	253103	
C418	1000pF, 0603, X7R, 50V	191470-102	
C419	1000pF, 0603, X7R, 50V	191470-102	
C420	4.7uF, CER, X7R, 50V, 20%	316878-475M	
C421	4.7uF, CER, X7R, 50V, 20%	316878-475M	

Inductors

Reference Designator	Description	Part Number	Note
L300	INDUCTOR, 0402, 125C, 0.37A, 2%, 18nH	638277-180G	
L301	INDUCTOR, 0402, 125C, 0.37A, 2%, 18nH	638277-180G	
L302	INDUCTOR, 0402, 125C, 0.37A, 2%, 18nH	638277-180G	
L303	INDUCTOR, 0402, 125C, 0.37A, 2%, 18nH	638277-180G	
L304	INDUCTOR, 0504, 90 OHMS, 150mA, C- MODE	324381-090D	
L305	INDUCTOR, 0504, 90 OHMS, 150mA, C- MODE	324381-090D	
L400	INDUCTOR, PWR, 47uH, 2.10A	309804-470M	
L400	PAD, THERMAL, CONDUCTIVE, 10X10X1.27mm	374661-0010	
L401	INDUCTOR, 1.1A, 47uH20%, SMT	303222-470M	
L402	BEAD, FERITE, COMMON MODE, 10-30MHz	330122-0010	
FB400	FERRITE BEAD, 1206, 120 OHM	326348-121	
FB401	FERRITE BEAD, 1206, 120 OHM	326348-121	

Diodes

Reference Designator	Description	Part Number	Note
D200	SWITCHING, 75V, 200mA	148582	
D201	SWITCHING, 75V, 200mA	148582	
D202	SOT-23, BAV 70	147249	
D401	SCHOTTKY, 3A, 40V, SMB	350803-0040	
DS200	LED, T-1 3/4, 5V, R ANGLE, WHT/YEL	359265-0010	

ELECTRICAL PART LIST

Input / Output PCB Assembly

Transistors

Reference Designator	Description	Part Number	Note
Q200	BPLR, P, 40V, 200mA, SOT23	148596	
Q201	BRT, NPN, 4.7K/4.7K, SOT-23	346223-0060	
Q202	BPLR, P, 40V, 200mA, SOT23	148596	
Q203	BRT, NPN, 4.7K/4.7K, SOT-23	346223-0060	
Q204	BPLR, N, 40V, 200mA, SOT23	146819	
Q300	MFET, N-CH, 0.3A, 60V, SOT-23	356154-0010	
Q301	P-CH, 30V, 2.8A, SOT-23, 3130	326386-0010	
Q302	BPLR, PNP, 500MA, SOT23	189290-001	
Q303	MFET, N-CH, 0.3A, 60V, SOT-23	356154-0010	
Q304	MFET, N-CH, 0.3A, 60V, SOT-23	356154-0010	
Q306	P-CH, 30V, 2.8A, SOT-23, 3130	326386-0010	
Q400	MFET, P, 40V, 3.0A, SOT-23	303215-001	
Q401	NFET, SMALL SIG, , SOT-23, FDV301N	329013-0010	
Q402	MFET, P, 40V, 3.0A, SOT-23	303215-001	

Integrated Circuits

Reference Designator	Description	Part Number	Note
U200	BUFFER, NON-INV, SINGLE, 74VHC1G125, SC70	347398-0010	
U201	BUFFER, NON-INV, SINGLE, 74VHC1G125, SC70	347398-0010	
U300	CONN, RJ45, 2.54mm, S ENTRY, UNSHLD, 12P, BLK	359029-0020	
U301	PWR DIST SW, USB, 0.5A, TPS2051C, SOT23-5	354597-0010	
U400	PWM, V, CONTROLLER, TPS40200	303218-001	

Miscellaneous

Reference Designator	Description	Part Number	Note
J200	CONN, FFC, 0.5mm, S ENTRY, 40POS	310573-040	
J201	CONN, HEADER, RTANG, 2.5mm, 8 POS	145402-08	
J300	CONN, FFC, 0.5mm, S ENTRY, 31 POS, W/SHIELD	310623-031	
J301	CONN, PHONE, 3.5MM, FEMALE, 3POS, BLK	362418-0010	
J302	CONN, USB, TYPE A, SMT	306363-001	
J303	CONN, USB, MICRO-B, 5POS, FEMALE	330458-0010	
S200	SWITCH, TACT, SPST, R ANGLE, 50mA, 12V	359529-0010	
S300	MUX/DEMUX, 2X2:1, USB, TS3USB221, 10QFN	353620-0010	
SHLD400	SHIELD, IO MODULE, TOP FRAME	362500-0020	
-	SHIELD, RF MODULE, TOP COVER	353965-0010	
SHLD401	SHIELD, IO MODULE, BOTTOM FRAME	362839-0010	
-	SHIELD, RF MODULE, BOTTOM COVER	353967-0010	
VR300	TVS, ESD, 24VDC, 0603	352782-0010	
VR301	TVS, ESD, 24VDC, 0603	352782-0010	
VR302	TVS, ESD, 24VDC, 0603	352782-0010	
VR303	TVS, ESD, 24VDC, 0603	352782-0010	
VR304	TVS, ESD, 24VDC, 0603	352782-0010	
VR305	TVS, ESD, 24VDC, 0603	352782-0010	

ELECTRICAL PART LIST

Input / Output PCB Assembly

Miscellaneous (continued)

Reference Designator	Description	Part Number	Note
VR306	TVS, ESD, 24VDC, 0603	352782-0010	
VR307	TVS, ESD, 24VDC, 0603	352782-0010	
VR308	TVS, ESD, 24VDC, 0603	352782-0010	
VR309	TVS, ESD, 24VDC, 0603	352782-0010	
ZR200	ZEN, SOD-123, 6V, .5W, 5%	174265-5233	
ZR400	ZEN, 12V, 225MW, 5%, SOT-23	135247-5242	

DISASSEMBLY PROCEDURES

1. Top Cover Removal

1.1 With the unit upside down, remove the three screws that secure to two halves of the enclosure together.

1.2 Lift off the bottom enclosure. It will come off with the Wi-Fi PCB assembly mounted in the bottom of it, attached to the I/O board with two ribbon cables. The I/O PCB assembly is mounted to the upper enclosure plastic.



2. I/O PCB Assembly Removal

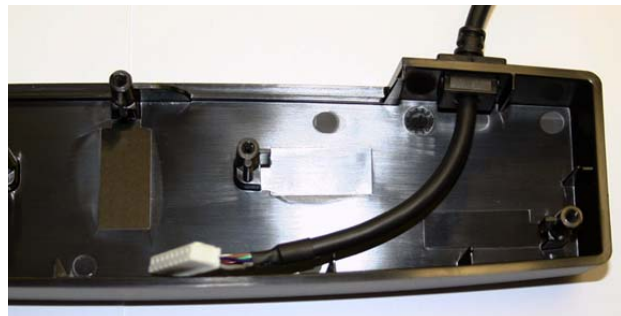
2.1 Perform procedure 1.

2.2 Remove the two screws that secure the I/O PCB assembly to the upper housing. Lift out the board.

Note: Retain the connector scrim and the reset button scrim for re-use.

2.3 Disconnect the Bose® link cable at J201. Disconnect the ribbon cables and J200 and J300.

Note: The Bose link cable is not easily replaceable. It comes as a service part, included with the top housing, pressed in place.



3. Wi-Fi Module PCB Removal

3.1 Perform procedure 1.

3.2 Remove the one screw that secures the Wi-Fi board to the bottom housing. Lift out the PCB assembly.

3.3 Disconnect the two ribbon cables at J1201 and J1203.

Note: Due to complexity, the Wi-Fi module PCB assembly is not repairable at the component level. If you suspect it has failed, you will need to replace the board.



TAP COMMAND SETUP

SoundTouch™ Wireless Adapter

Note: The SoundTouch wireless adapter is powered by +12 over its Bose® link cable. You will need to connect the wireless adapter to a compatible SoundTouch product such as an SA-4 amplifier, Stereo JC music system bass module or a Lifestyle SoundTouch media center in order to provide power to it for the following tests.

TAP command setup

Equipment Required:

Hardware

- Computer w/serial port
- RS232 to TTL converter
- Lifestyle® ETAP Cable, P/N 264565
- SoundTouch product, SA-4 amplifier or other compatible

Software

- TeraTerm terminal emulator (download at <http://sourceforge.jp/projects/ttssh2/>)

TAP commands are sent to the SoundTouch wireless adapter by connecting to the SERVICE connector on the back of the adapter.

An ETAP cable and RS232 to TTL Converter are required for this communication. The ETAP cable is available from Bose® (see part number above). The RS232 to TTL Converter is made by B+B electronics, model number 232LPTTL. It can be purchased online at <http://www.bb-elec.com>.



**B+B Electronics model 232LPTTL
RS232 to TTL converter**

TAP commands are needed for the following procedures:

- A.** Wi-Fi Test
- B.** Serial Number Programing
- C.** Setting Wi-Fi Country Code

1. Tera Term Terminal USB Setup

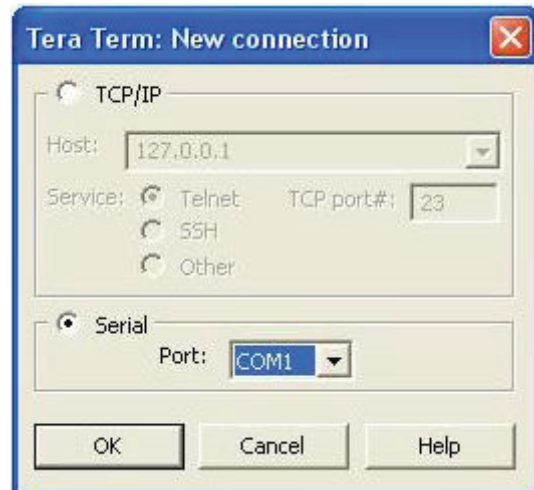
Tera Term is a terminal emulator and can be downloaded at <http://sourceforge.jp/projects/ttssh2/>. It is the interface used to send TAP commands to the SoundTouch wireless adapter.

1.1 Connect the SoundTouch wireless adapter to the computer.

- Connect the RS-232 to TTL converter to the COM port on the PC.
- Connect the TAP cable to the RS-232 to TTL converter.
- Plug the other end of the TAP cable into the SERVICE jack on the back of the SoundTouch wireless adapter.
- Connect the SoundTouch wireless adapter Bose link cable to the SoundTouch product.
- Connect the SoundTouch product to AC power.

2. Teraterm Setup

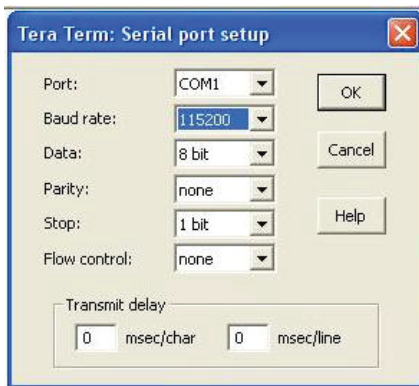
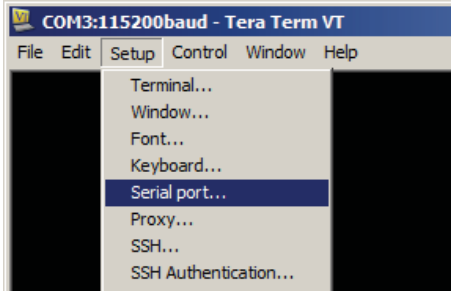
2.1 Launch a Tera Term terminal window and select serial communication and port as shown below and on the next page.



WI-FI TEST PROCEDURE

TAP Command Setup (continued)

2.2 Select setup, then serial port to set the baud rate to 115,200 data to 8 bit, parity to none, stop to 1 bit and flow control to none.



3. Test TAP Communication

3.1 Enter TAP command “sys ver”. The system will respond with the software version similar to: BoseApp version:
1.0.17.11330.242810
epdbuild.rel_1.x.hepdswbld05.2013-06-18T15:50:19.

Functional Tests

Note: The SoundTouch wireless adapter is powered by +12 over its Bose® link cable. You will need to connect the wireless adapter to a compatible SoundTouch product such as an SA-4 amplifier, Stereo JC music system bass module or a Lifestyle SoundTouch media center in order to provide power to it for the following tests.

1. Wi-Fi Functional Test Set Up

This test uses TAP commands to connect the product to a Wi-Fi network and stream audio from a Bose® URL. The Bose SoundTouch™ application can be used in place of this test.

Note: Do not download the audio file from the test URL.

Determine the security type for your router and select the appropriate TAP command for connecting to a Wi-Fi Router (WEP, WPA, or no security). Refer to pages 30 - 31, TAP Command Setup.

2. Connecting to a Wi-Fi Router

2.1 Enter the following TAP command for your router security type setting. Do not enter parentheses.

2.1.1 WEP Security Type

airplay wep profile (SSID) (Password)

2.1.2 WPA Security Type

airplay wpa profile (SSID) (tkip or aes) (Password)

2.1.3 No Security

airplay Wi-Fi profile (SSID)

2.2 Wait for the Wi-Fi indicator LED on the back of the unit to turn white. This may take up to a minute. While the unit is connecting, it will flash amber. If the indicator does not turn white, enter the TAP command again.

3. Testing the Wi-Fi Module.

3.1 Enter the following TAP commands. Press the <enter> key on your keyboard after each command. You should see an OK response in the Tera Term dialog box.

```
sys configuration DemoAudioURL http://  
worldwide.bose.com/downloads/assets/  
audio/take5.mp3 <enter>
```


TEST PROCEDURES

sys configuration DemoNetworkEnabled
true <enter>

demo enter <enter>

3.2 The song “Take 5” should play. Listen for clean undistorted audio.

3.3 Enter the following TAP command to exit the Wi-Fi test.

demo exit <enter>

Note: A Tera-Term macro that includes these TAP commands is available for download on the product’s repair information page. Place the macro file in the same folder as your Tera-Term program. Open Tera-Term, select Control, Macro, wifi_test.ttl. Once the macro runs, follow the prompts.

4. Factory Default Unit

4.1 Enter the TAP command

sys factorydefault <enter>

4.2 Provide the customer instructions for reconnecting their system to their Wi-Fi network. Download the instructional sheet on the product’s repair information page.

5. USB Port Test

5.1 Connect the SoundTouch wireless adapter to a computer as shown in the TAP command set up documented on pages 30 - 31.

5.2 Type the command “local_services on” and <enter>. Then press CTRL-C on the keyboard. Then type “e” and <enter>. The command line lisa login: should be displayed on the computer.

5.3 Type the command “root” and <enter>. The command line should be root@lisa:root#.

5.4 Connect a USB thumb drive to the USB port located on the back of the product.

5.5 Type the command “lsusb”.

5.6 Verify the unit responds with the name of the USB thumbdrive. Sample response - Bus 002 Device 002: ID 0781:5151 SanDisk Corp. Cruzer Micro Flash Drive.

5.7 Send the command “rm /mnt/nv/local_services” and <enter>.

5.8 Send the command “exit” and <enter>. This will return to the TAP interface (CLI) and a TAP command line “->” should be shown.

6. Micro USB Port Test

6.1 Using a micro USB to standard USB cable, insert the micro USB end of the cable into the SoundTouch connector labeled SETUP A (micro USB). Plug the other end of the cable into a USB port on a computer. Ensure that cable is properly seated.

6.2 Open your device manger and look under Network Adapters. You should see the SoundTouch Wi-Fi adapter as an adapter.

Directions: On your computer, click on Start and navigate to Run. In the window that opens, enter “mmc devmgmt.msc”. The device manager will open. In the device manager, expand the network adapters, you should see the SoundTouch wireless adapter as an adapter.

7. Ethernet Connector Test

7.1 Insert an Ethernet cable into the Ethernet connector on the SoundTouch system. Connect the other end of the cable to the router.

7.2 The LED lights on the product’s Ethernet connector should light up yellow and green after a few seconds indicating that the connector is functioning.

SERIAL NUMBER AND COUNTRY CODE PROGRAMMING

Perform both of these procedures any time the Wi-Fi Module is replaced.

Download two macros from the SoundTouch™ product's repair information page located on <http://serviceops.bose.com>.

Place these macros in the Tera Term program folder.

set_serial_number.ttl

set_country_code.ttl

1. Setting the Serial Number

1.1 Connect the SoundTouch wireless adapter to a computer as shown in the TAP command setup procedure on pages 31 - 32.

1.2 Within Tera Term, select Control then Macro and Select the file - "set_serial_number.ttl"

1.3 Follow the prompts.

2. Setting the Country Code

2.1 Connect the SoundTouch wireless adapter to a computer as shown in the TAP command set up procedure on pages 31 - 32.

2.2 Within Tera Term, select Control then Macro and Select the file - "set_country_code.ttl"

2.4 Follow the prompts.

Note: Selecting us sets the Wi-Fi module to the US standard channels 1-11. Selecting eu sets the Wi-Fi module to EU standard channels 1-13

3. Reading the Country Code.

3.1 Type the command "local_services on" and <enter>. Then press CTRL-C on the keyboard. Then type "e" and <enter>. The command line lisa login: should be displayed on the computer.

3.2 Type the command "root" and <enter>. The command line should be root@lisa:root#.

3.3 Enter "cat /var/tmp/mfgdata.xml". The country code is displayed in the first line of the response.

3.4 Return to CLI prompt by entering the command "rm /mnt/nv/local_services" and <enter>.

3.5 Enter the command "exit" and <enter>. This will return to the TAP interface (CLI) and a TAP command line "->" should be shown.

TAP COMMANDS

1. Connect to Router

1.1 No security

“airplay wifi profile [network_name]” connects to a network w/ no security

1.2 WPA security

“airplay wpa profile [network_name] [security] [passphrase]” for WPA where security is TKIP or AES

1.3 WEP security

“airplay wep profile [network_name] [key]” for WEP security

2. Play Song from Demo URL

2.1 View Current system configuration
“getpdo CurrentSystemConfiguration” will print out the current values

2.2 Enter location of demo URL
“sys configuration DemoAudioURL http://worldwide.bose.com/downloads/assets/audio/take5.mp3”

2.3 Enable Demo
“sys configuration DemoNetworkEnabled true”

2.4 Enter Demo mode
“demo enter”

2.5 Exit Demo Mode
“demo exit” or “sys reboot”

3. Enter Manufacturing mode

3.1 As soon as the unit starts to boot, hold shift and press “U” repeatedly until “U-Boot#” prompt is displayed. This will interrupt the normal boot process.

3.2 At the U-Boot# prompt, enter TAP command “setenv variant_mode mfg”

3.3 Enter TAP command “boot” to reboot unit into manufacturing mode.

4. Set Country Code

The Wi-Fi module can be set to EU or US standard, which determines which Wi-Fi channels are used. All countries outside the US are set to the EU Code. EU 1-13 ch , US 1-11 ch

4.1 Enter Manufacturing Mode (Procedure 3)

4.2 At the “->” prompt, enter TAP command “d dm870 cc (EU or US).”

4.3 Enter TAP command “d reset” to reboot into normal mode.

5. Check Country Code.

5.1 Type the command “local_services on” and <enter>. Then press CTRL-C on the keyboard. Then type “e” and <enter>. The command line spotty login: should be displayed on the computer.

5.2 Enter TAP command “root” and <enter>. The command line should be root@spotty:root#.

5.3 Enter “cat /var/tmp/mfgdata.xml” without the quotes. The country code is displayed in the first line of the response.

5.4 Return to CLI prompt by entering the command “rm /mnt/nv/local_services” and <enter>.

5.5 Enter the command “exit” and <enter>. This will return to the TAP interface (CLI) and a TAP command line “->” should be shown.

TAP COMMANDS

6. Set Serial Number

6.1 Enter Manufacturing Mode (Procedure 3)

6.2 At the “->” prompt, enter TAP command “d serial 1 XXXXXXXXXXXXXXXXXXXX”.
Where X equals a serial number digit.

6.3 Enter TAP command “d reset” to reboot into normal mode.

7. Software Version

7.1 “sys ver”

The unit will reply with something similar to the following, significant digits are bold:
BoseApp version: **2.1.12**.12569.366803
epdbuild.rel_2.x.hepdswbld05.2013-09-12T18:23:09.

8. Factory Default

8.1 Enter TAP command ‘sys factorydefault’

Software Update Procedure

Using a Thumb Drive

- Download the update file from the following URL: http://worldwide.bose.com/downloads/en/web/soundtouch_updates_usb/page.html.
- Copy the file to a thumb drive.
- Rename the file, if needed, to “Update.stu” (note the capital U).
- Plug the thumb drive into the SoundTouch wireless adapter.
- Connect the unit to power by connecting the Bose link cable to the back of the SoundTouch product while holding down the reset button on the back of the Wi-Fi adapter.
- Wait about 5 minutes for the update to complete.
- Remove the thumb drive. Remove and re-apply power. The software should be updated.

Note: You can verify that the software updated by opening a Tera Term window (follow the procedures on pages 31 - 32) and typing in the command “sys ver” <enter>. The software version will be displayed.

Wi-Fi Update Procedure

To update the wireless adapter software over Wi-Fi, follow the below procedure.

Open the SoundTouch™ application. The application will look for the system. Once it locates the system, it will check it for any needed updates. If there is an update available, it will install it automatically.

You will be able to check the software version that is installed by going to explore/settings/systems and selecting that device. You will see the software version that is installed as well as the IP address for it.

SERVICE MANUAL REVISION HISTORY

Date	Revision Level	Description of Change	Change Driven By	Pages Affected
4/14	00	Document released at revision 00.	Service manual release	All
5/14	01	Part number change.	Part number chg.	5
7/14	02	Updated test procedures	Procedure chg.	30-32
4/15	03	Added new SoundTouch module part numbers	Part number chg.	5

SPECIFICATIONS AND FEATURES SUBJECT TO CHANGE WITHOUT NOTICE

BOSE[®]
Better sound through research[®]

Bose Corporation
The Mountain
Framingham Massachusetts USA 01701

P/N: 360582-SM Rev. 03; 4/2015 (H)
<http://serviceops.bose.com>