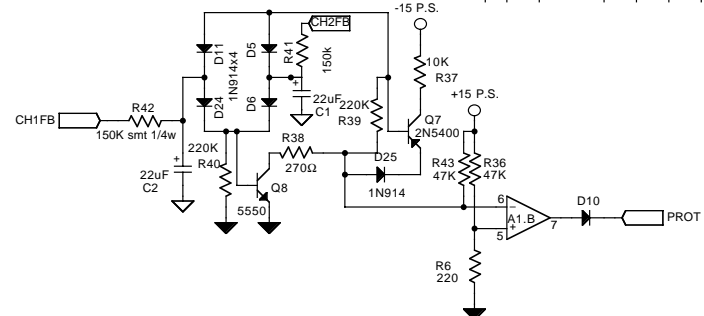
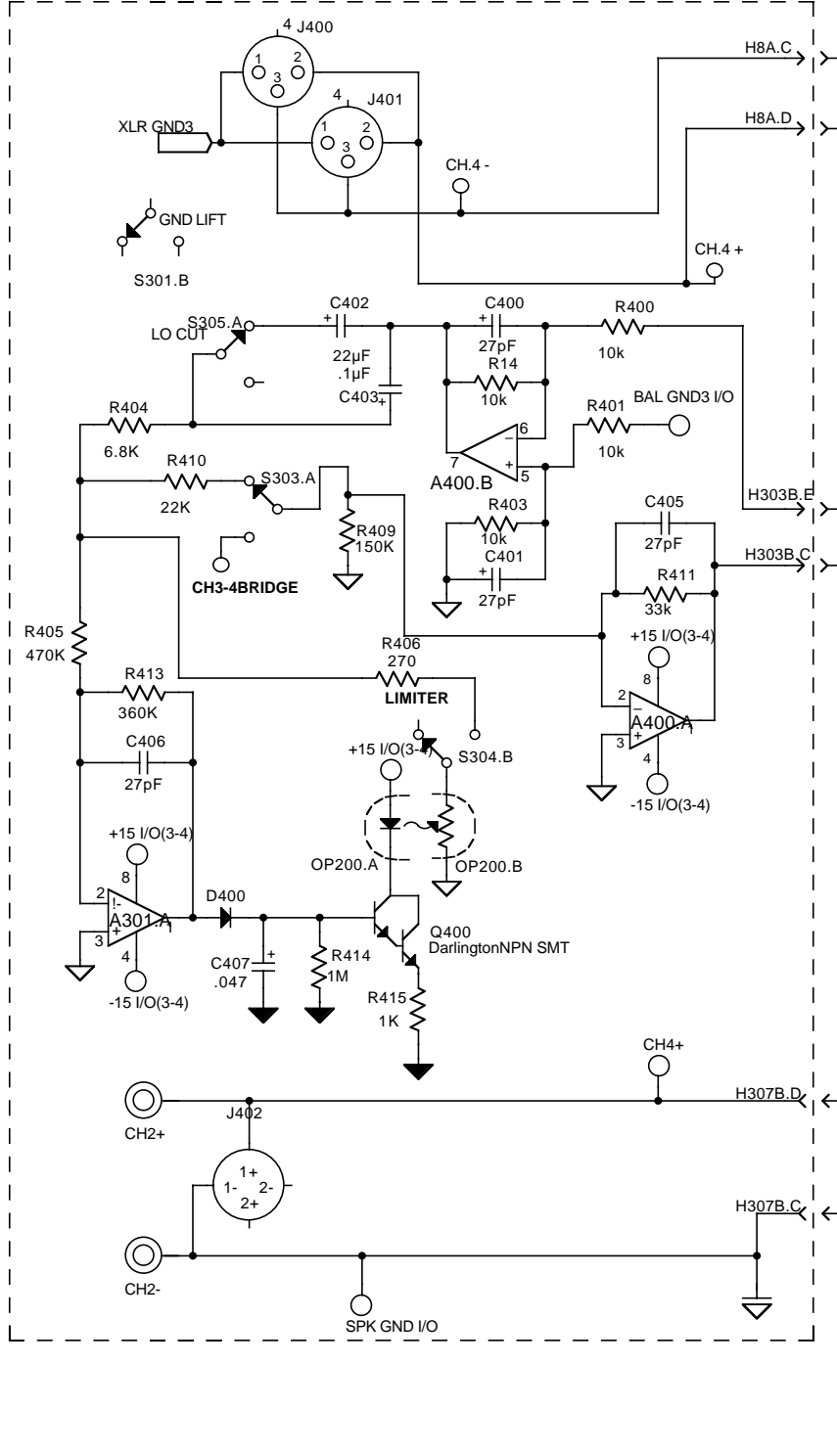
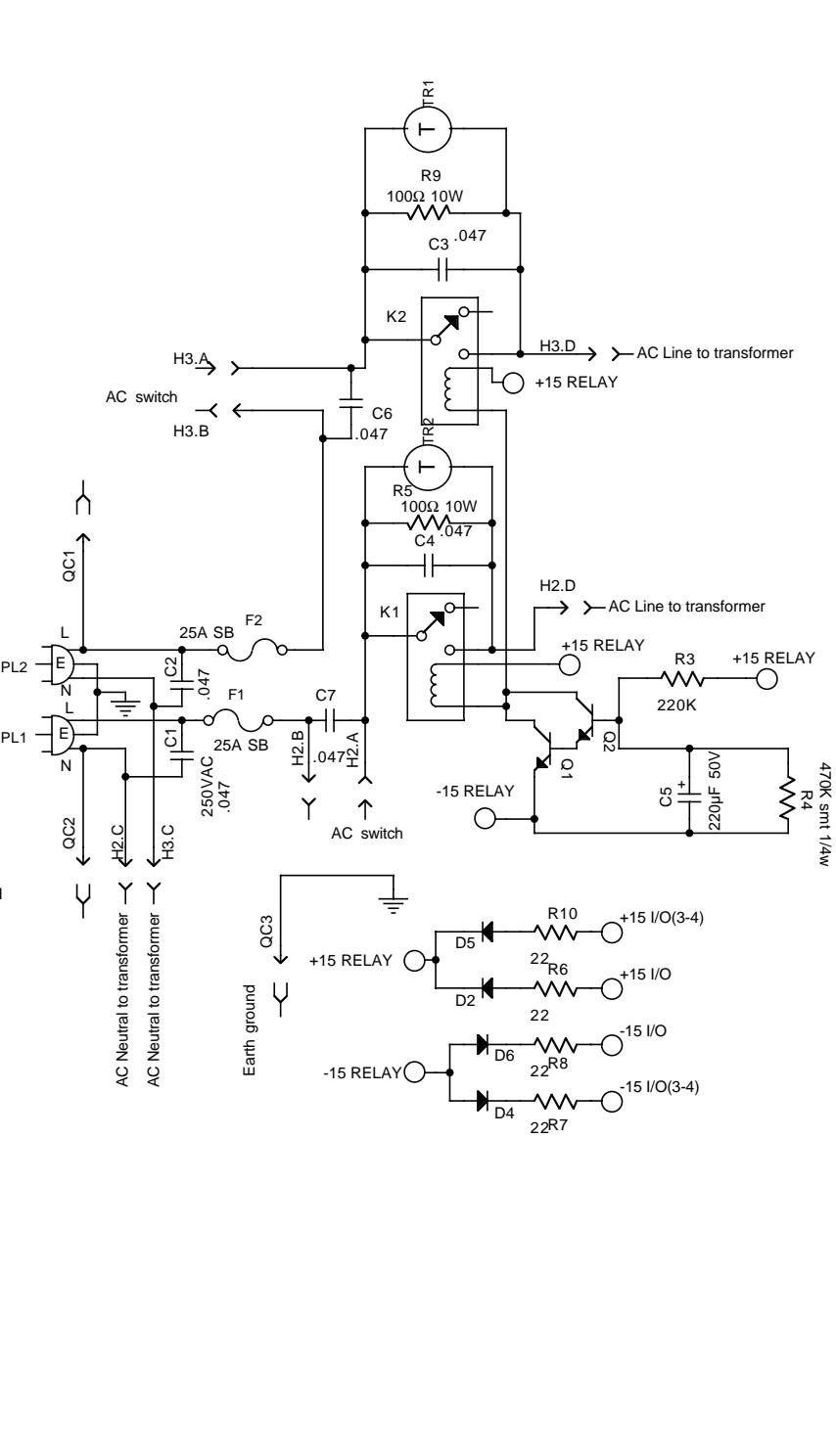
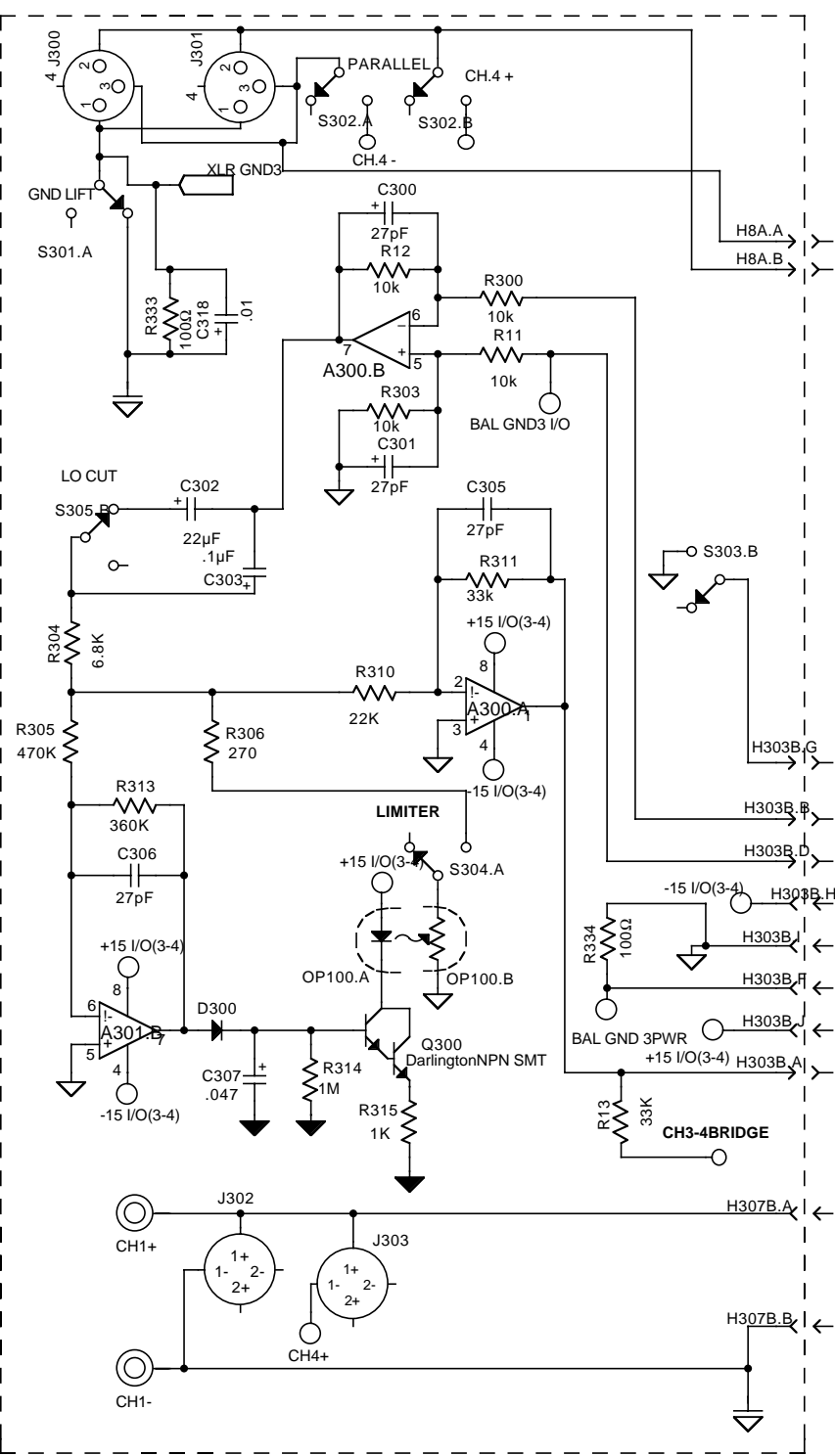


12340 World Trade Drive
 San Diego, CA 92128
 (619) 487-1600
 FAX 487-6629

CARVIN	
DCM 4000 power supply & amp	
DRAWN BY: Craig R. Hockenberry	DATE: 12 JUNE 2000
APPROVED:	DATE:
PCB NO: 30-04004	REV: B
ASSY. NO: 80-04004	REV: B
REVISED BY: GEORGE DREYER	DATE: 1 Oct 2001

- Changes From REV A:
1. Ground plain short to output corrected.
 2. yellow and brown QC's moved 0.1" to help with cable routing.
 3. Q1 and Q10 thermal SMT transistors disconnected.





12340 World Trade Drive
San Diego, CA 92128
(619) 487-1600
FAX 487-6629

CARVIN

DCM 4000 / 2000

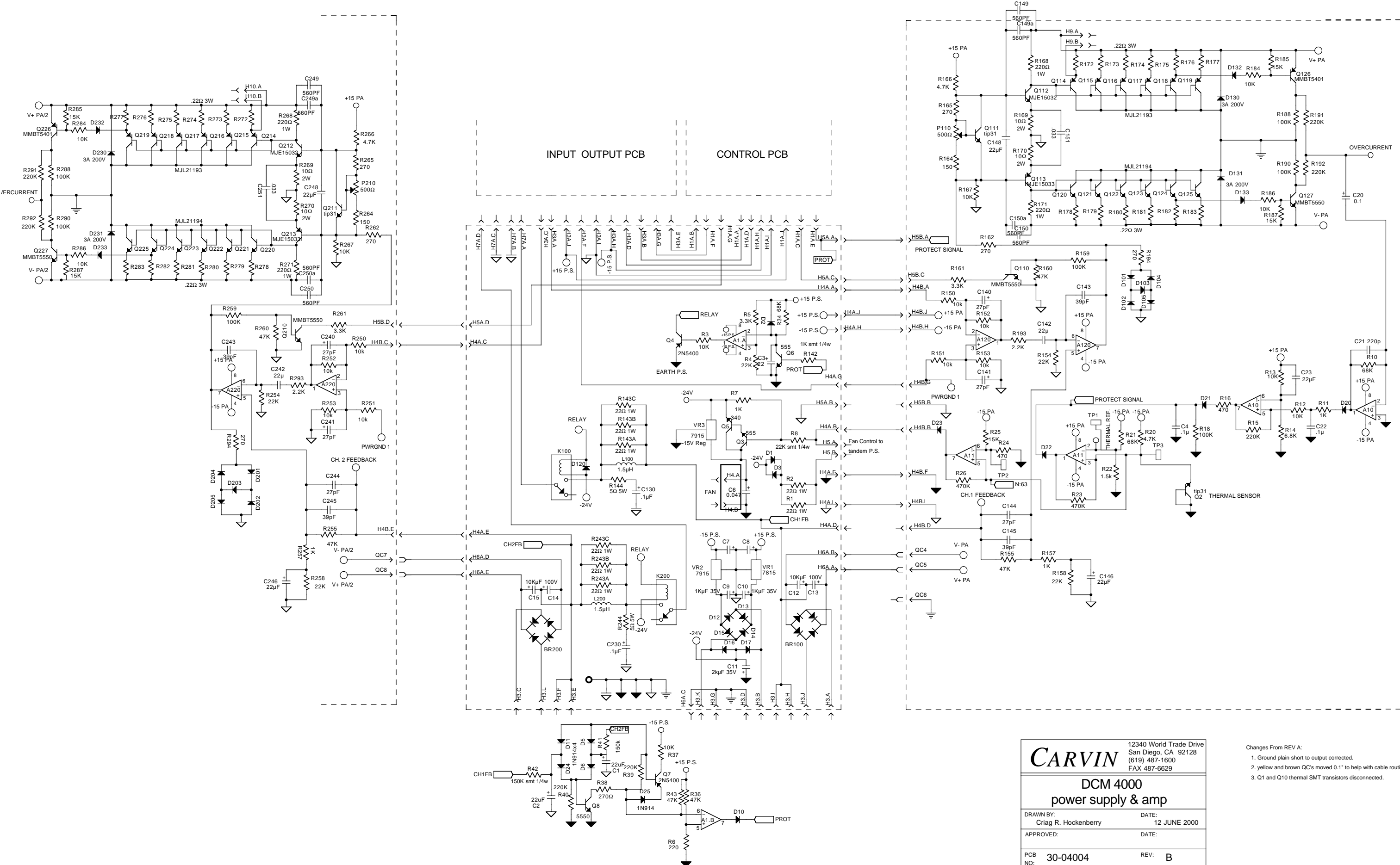
DRAWN BY: GEORGE DREYER DATE: 17SEPT2001

APPROVED: DATE:

PCB NO: 30-04005 REV: A

ASSY. NO: 80-04005 REV: A

REVISED BY: GEORGE DREYER DATE: 17SEPT2001



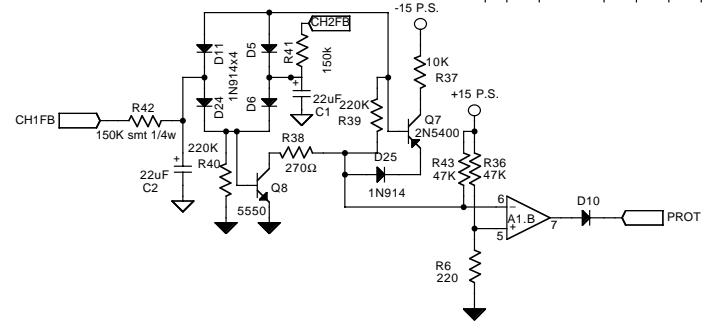
12340 World Trade Drive
San Diego, CA 92128
(619) 487-1600
FAX 487-6629

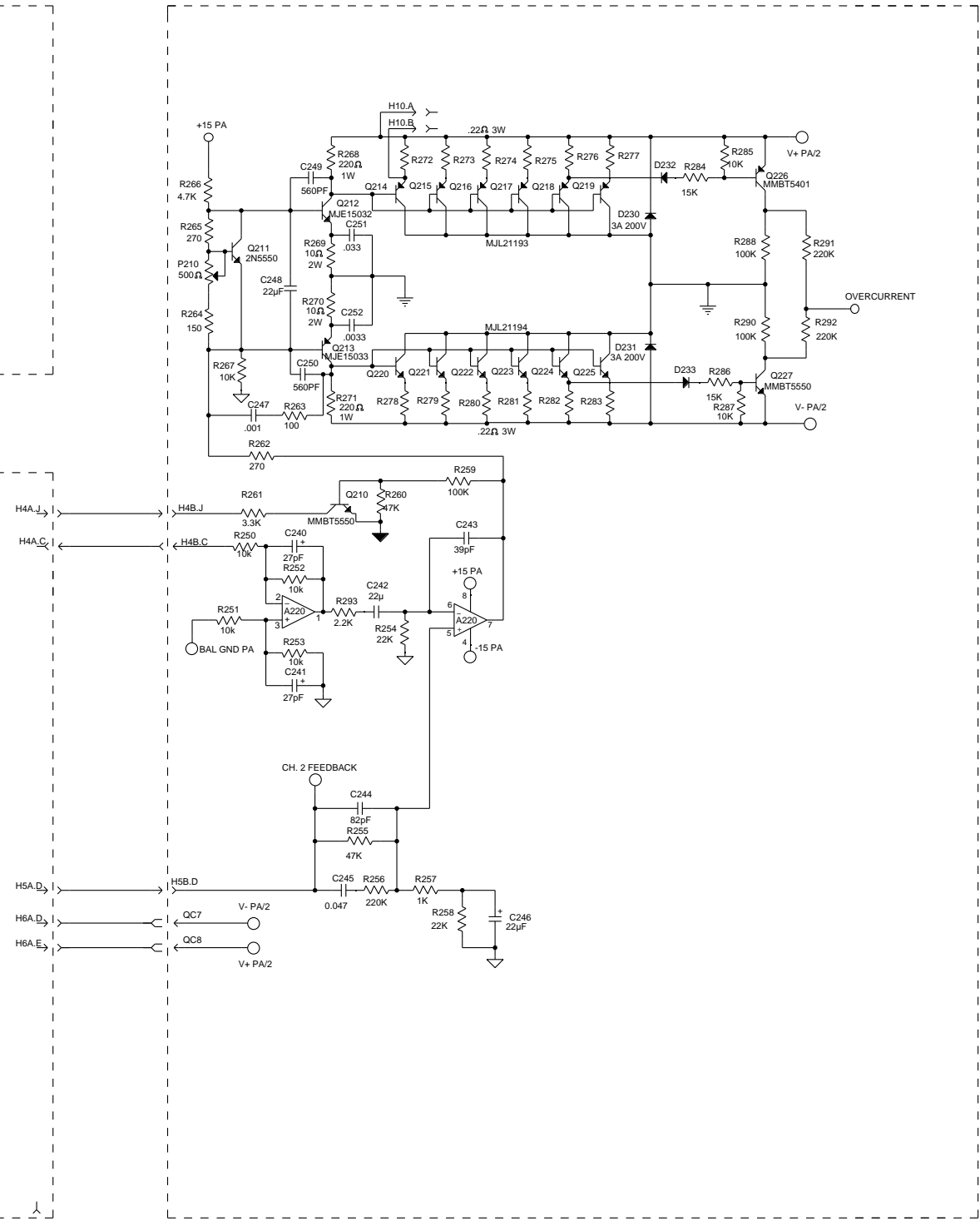
CARVIN

DCM 4000
power supply & amp

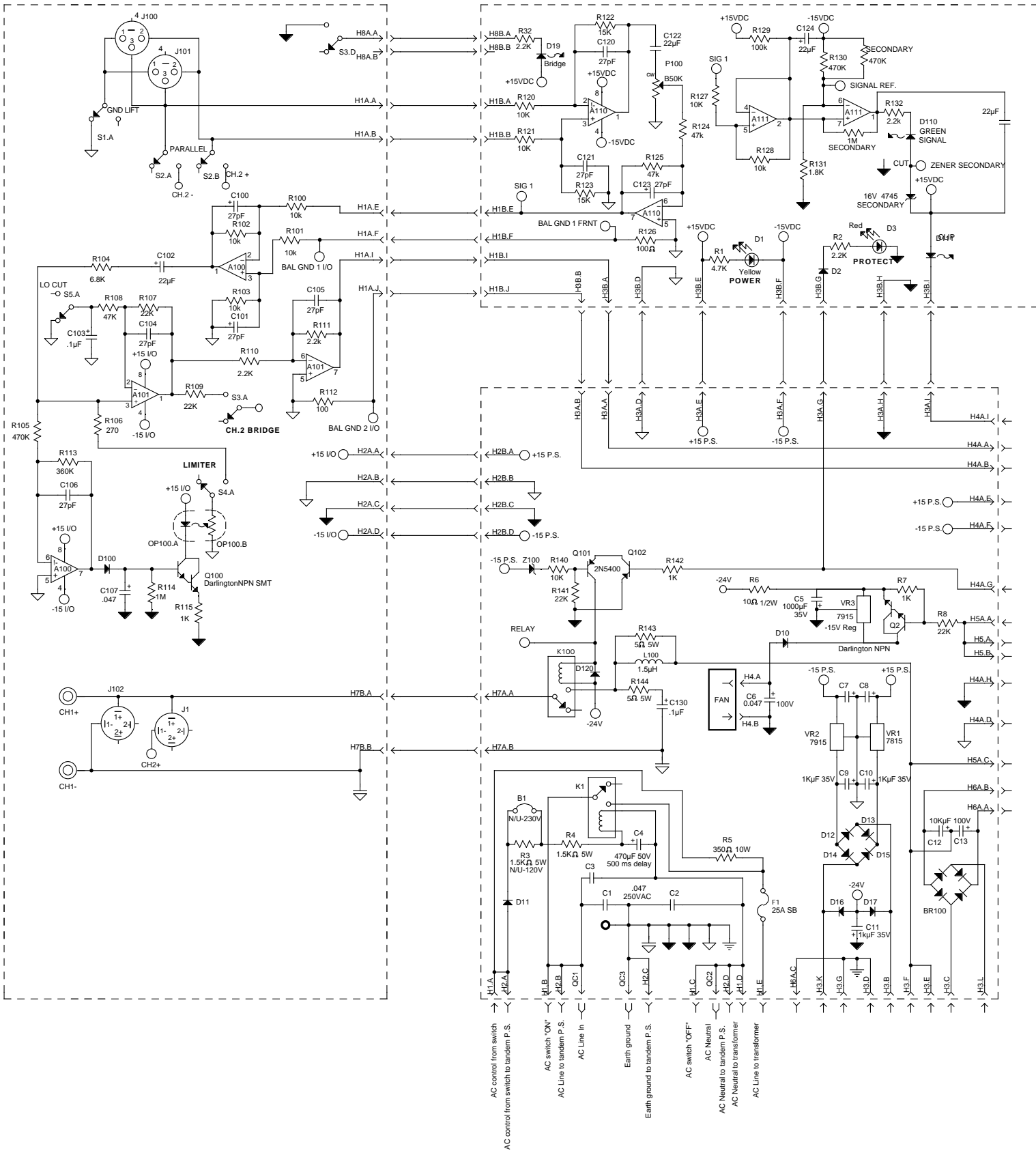
DRAWN BY: Craig R. Hockenberry	DATE: 12 JUNE 2000
APPROVED:	DATE:
PCB NO: 30-04004	REV: B
ASSY. NO: 80-04004	REV: B
REVISED BY: GEORGE DREYER	DATE: 1 Oct 2001

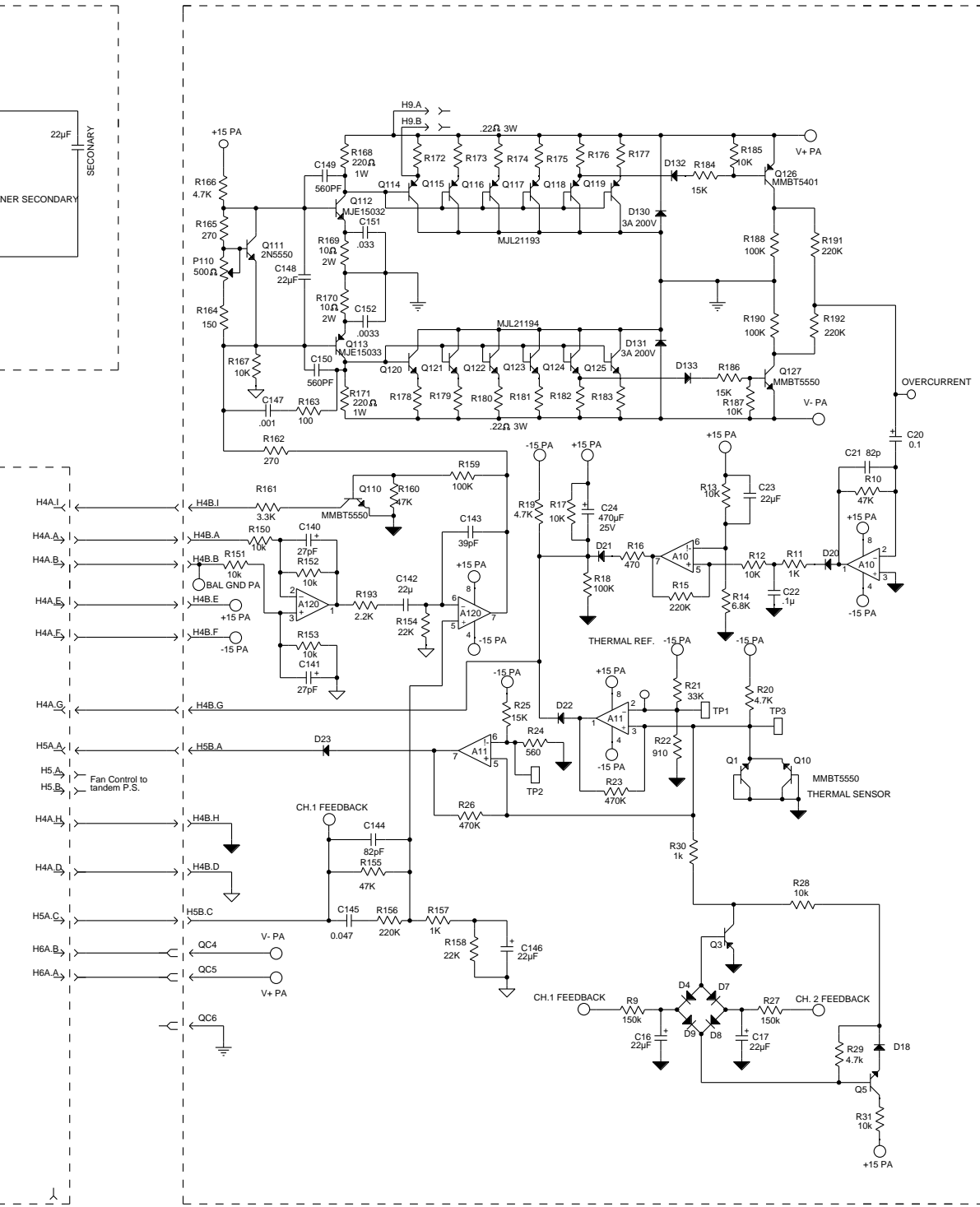
- Changes From REV A:
1. Ground plain short to output corrected.
 2. yellow and brown QC's moved 0.1" to help with cable routing.
 3. Q1 and Q10 thermal SMT transistors disconnected.





CARVIN		12340 World Trade Drive San Diego, CA 92128 (858) 487-1600 FAX 521-6032	
DCM 4000 CH 2			
DRAWN BY:	Criag R. Hockenberry		DATE:
			12 JUNE 2000
APPROVED:			DATE:
PCB NO:	30-04008	REV:	C
ASSY. NO:	80-04000	REV:	C
REVISED BY:	Criag R. Hockenberry		DATE:
			21 Nov. 2000





CARVIN		12340 World Trade Drive San Diego, CA 92128 (858) 487-1600 FAX 521-6032	
DCM 4000 / 2000			
DRAWN BY: Criag R. Hockenberry		DATE: 12 JUNE 2000	
APPROVED:		DATE:	
PCB NO: 30-04008		REV: C	
ASSY. NO: 80-04000		REV: C	
REVISED BY: Criag R. Hockenberry		DATE: 21 Nov. 2000	