

CBS-Columbia

Model: 534

Chassis:

Year: Pre 1955

Power:

Circuit:

IF:

Tubes:

Bands:

Resources

[Riders Volume 23 - CBS-COLUMBIA 23-1](#)

[Riders Volume 23 - CBS-COLUMBIA 23-2](#)

[Riders Volume 23 - CBS-COLUMBIA 23-3](#)

[Riders Volume 23 - CBS-COLUMBIA 23-4](#)

MODELS 533, 534, 535,
536, 530 Series

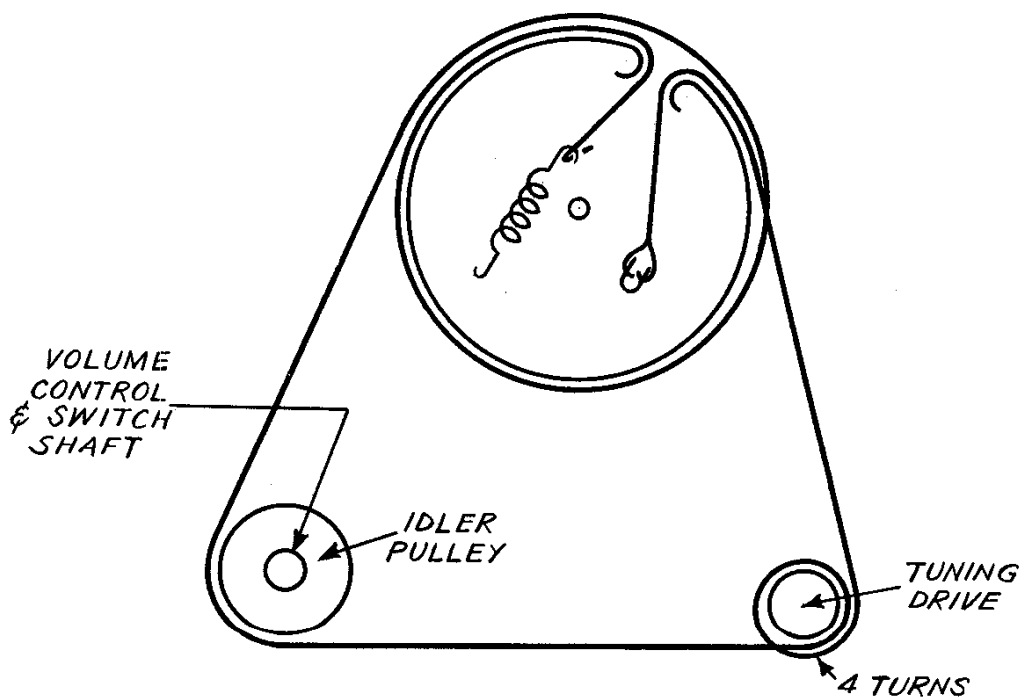
ALIGNMENT DATA

I. F. Alignment:

T1 and T2 at 455 Kc - tuning condenser plates completely closed. Connect generator with modulated RF signal to pin 8 - mixer grid 12SA7. Keep output of signal generator as low as possible so as not to overload IF amplifier or audio amplifier stages, volume control at maximum. Peak by audio signal from speaker, or an A. C. voltmeter connected across speaker.

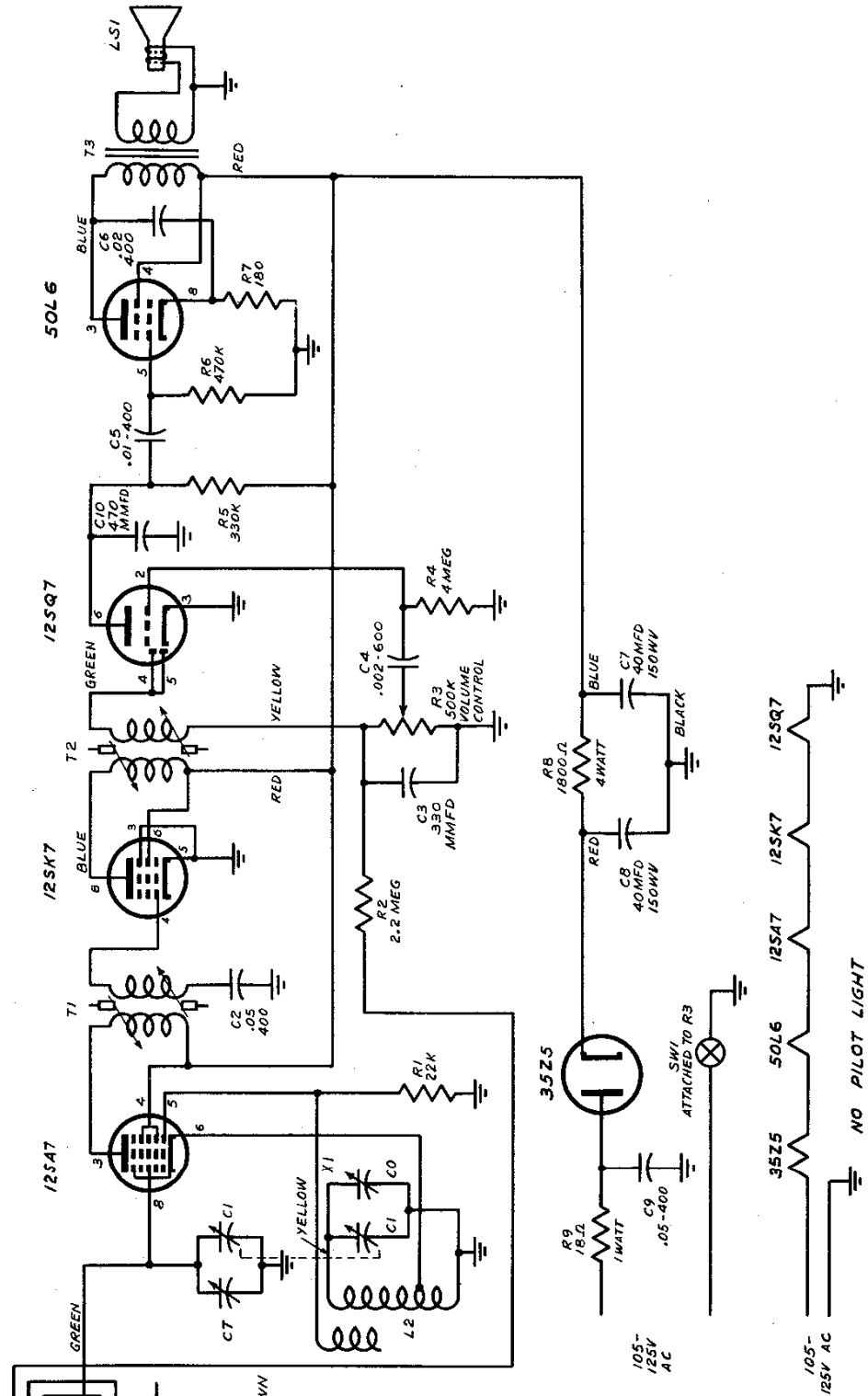
R. F. Alignment:

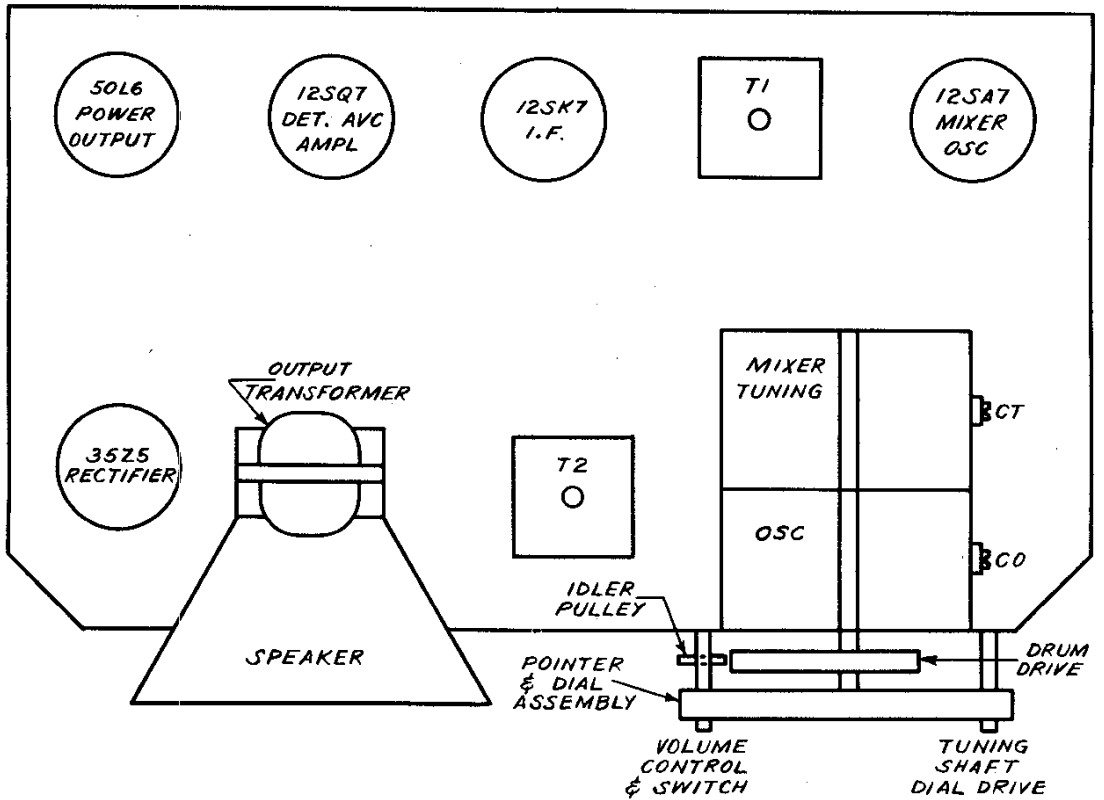
1. Set pointer with condenser plates completely closed so that it is horizontal.
2. Turn tuning drive so that pointer reads 1400 KC.
3. Adjust tuning condenser trimmer C_O for maximum response. Volume control at maximum, modulated signal from generator as small as possible.
4. Adjust C_T for maximum response as in step 3.
5. Repeat if necessary steps 1-5.



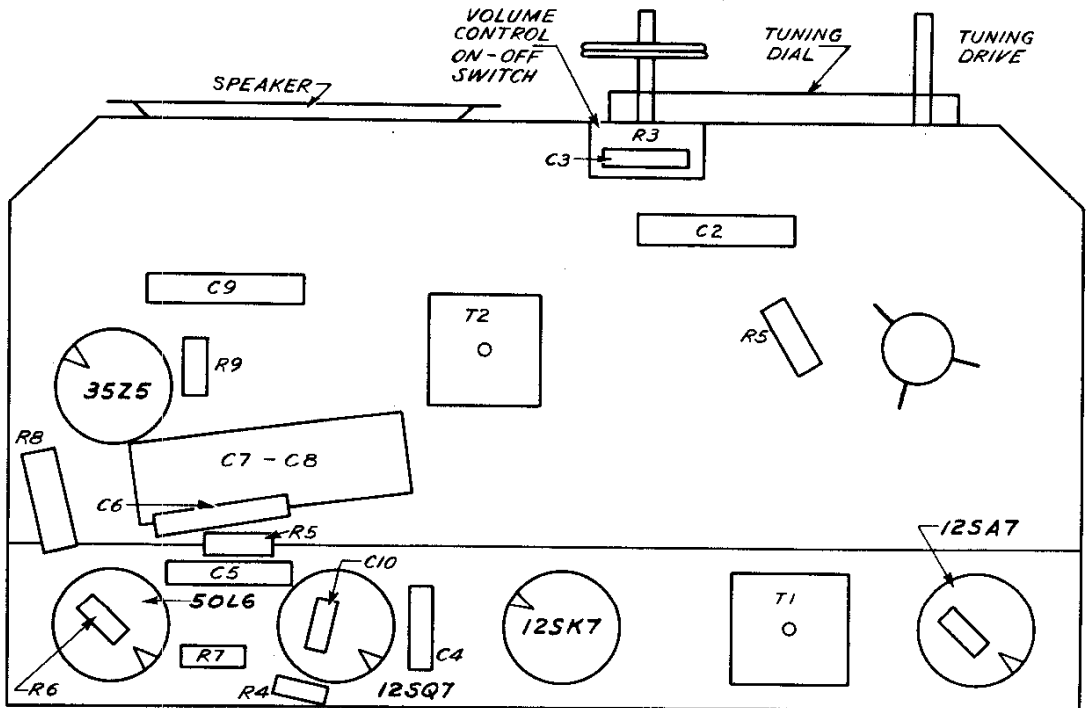
DIAL STRING

MODELS 533, 534,
535, 536, 530 Series





TOP VIEW



BOTTOM VIEW

MODELS 533, 534,
535, 536, 530 Series

<u>SCHEMATIC LOCATION</u>	<u>PART NUMBER</u>	<u>DESCRIPTION</u>
	1686	Cabinet (Walnut or Ivory)
C1	PE 196-98	Capacitor, Paper, .002 MFD 400V
C2	1666	Capacitor, Variable
C5	PE 191-15	Capacitor, Mica 47 MMF
C6	PE 191-31	Capacitor, Mica 220 MMF
C7	PE 196-112	Capacitor, Paper .05 MFD 400V
C8	PE 191-35	Capacitor, Mica 330 MMF
C9	PE 196-97	Capacitor, Paper .001
C10	PE 191-40	Capacitor, Mica 510 MMF
C11	PE 196-107	Capacitor, Paper .01
C12	PE 196-108	Capacitor, Paper .02 MFD 400V
C13	PA 20136	Capacitor, Electrolytic 40-40 @150
C14	PP 19105	Capacitor, Paper .05 MFD 600V
L2	28210	Coil, Oscillator
R5	2471	Control, Volume w/switch
	4275	Dial Crystal
	54172	Drive Shaft Assembly
	39137	Knob (Walnut or Ivory)
L1	28159	Loop Antenna
	4145	Pointer
R1	PE 230-2281	Resistor, 22000 ohm $\frac{1}{2}$ w
R2	PE 230-2325	Resistor, 1,500,000 ohm $\frac{1}{2}$ w
R3	PE 230-2309	Resistor, 330,000 ohm $\frac{1}{2}$ w
R4	PE 230-2333	Resistor, 3.3 megohm $\frac{1}{2}$ w
R6	PE 230-2305	Resistor, 220,000 ohm $\frac{1}{2}$ w
R7	PE 233-2257	Resistor, 2200 ohm 2w
R8	PE 230-2337	Resistor, 4.7 megohm $\frac{1}{2}$ w
R9	PE 232-1107	Resistor, 18 ohm 1w
	18110	Socket, Octal wafer
T3	5868	Speaker w/output transformer
T1	1770	Transformer, 1st. I.F.
T2	3535	Transformer, 2nd. I.F.