

SERVICE MANUAL

**PARTS LIST
EXPLODED VIEW
DIAGRAMS**

— **MODEL** —
ST510, ST520

C.E.C.
Chuo Denki

Chuo Denki Co., Ltd.

1767 Higashidaira
Higashimatsuyama
Saitama, Japan

tel. 0493-39-1119
telex. 2933105 CHUO J

TABLE OF CONTENTS

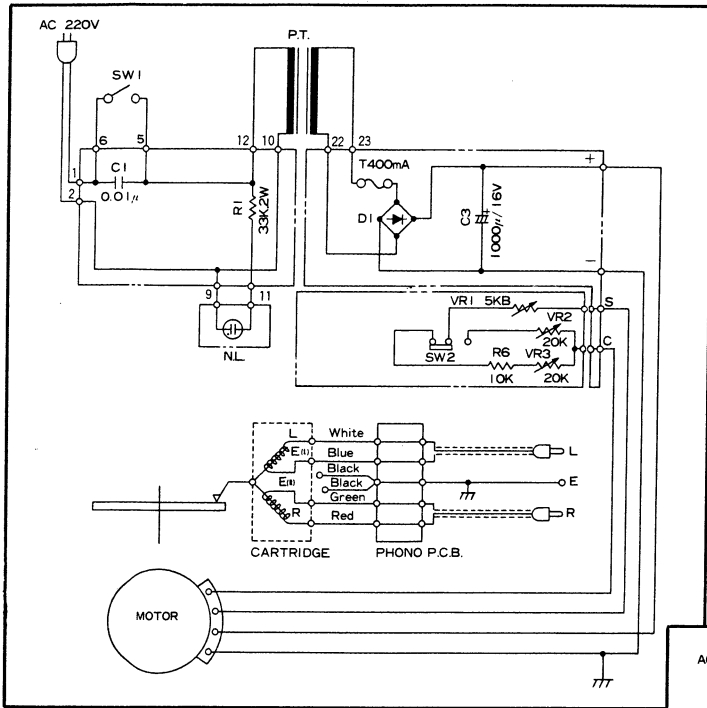
ST510 1~6

CIRCUIT DIAGRAM..... 1
PARTS LIST • SCREWS, WASHERS AND NUTS 2
EXPLODED VIEW.....3
WIRING DIAGRAM 5
SERVO CONTROLLER CIRCUIT DIAGRAM..... 6
PRINTED CIRCUIT BOARD 6

ST520 7~12

CIRCUIT DIAGRAM..... 7
PARTS LIST • SCREWS, WASHERS AND NUTS 8
EXPLODED VIEW.....9
WIRING DIAGRAM11
SERVO CONTROLLER CIRCUIT DIAGRAM12
PRINTED CIRCUIT BOARD12

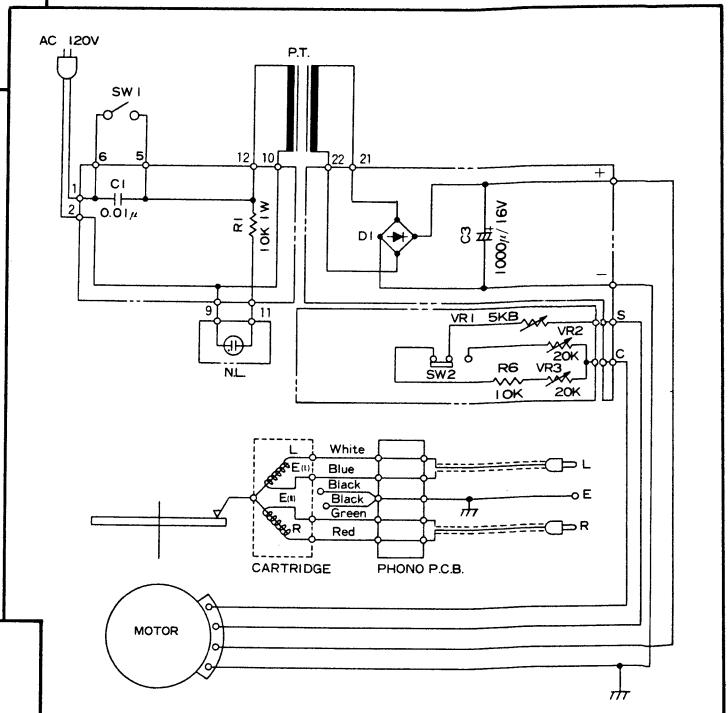
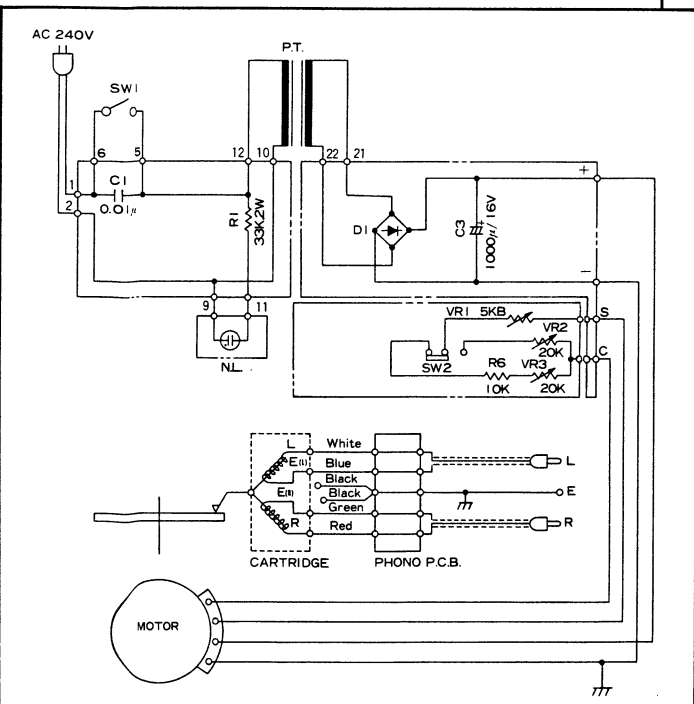
Version	Destination
EUR	Europe (220V 50HZ)
CND	Canada (120V 60HZ)
AUS	Australia (240V 50HZ)



Version EUR

Version CND

Version AUS



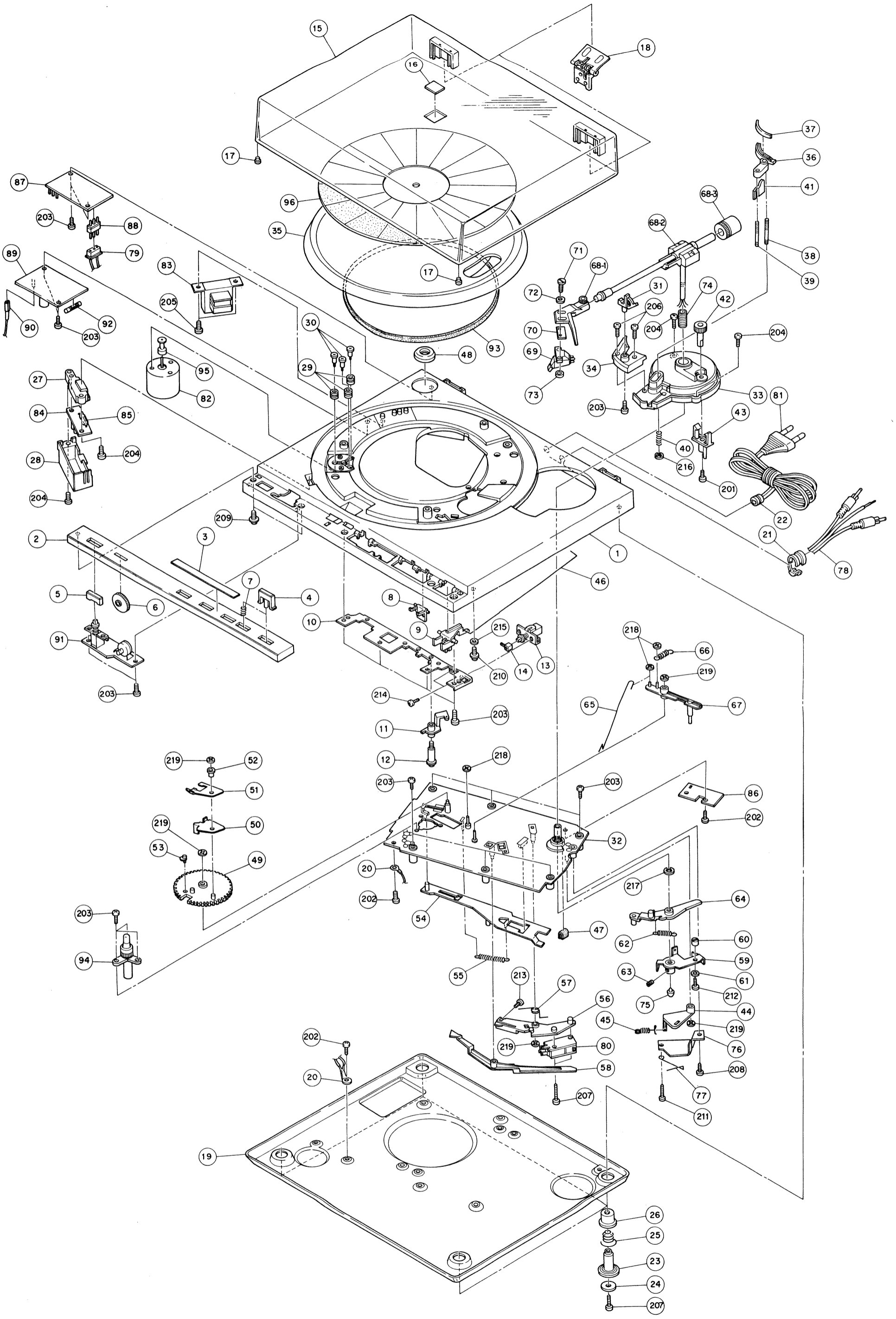
Ref. No.	Parts No.	Description	Version
1	D 1005401	Cabinet	EUR, CND AUS
2	D 2098604	Panel front	
2	D 2098603	Panel front	
3	K 4861600	Plate decorate	
4	D 4851300	Knob	
5	D 4851400	Knob	
6	D 4849801	Knob	
7	E 4856000	Spring	
8	D 4852100	Hinge	
9	D 3175300	Hinge	
10	A 3173500	Angle mount	
11	D 4853700	Arm	
12	134 2410627000	Shaft	
13	4231202400	SW push 1 key (O)	
14	134 2410920000	Pin	
15	D 2098300	Lid	
16	K 4799800	Name plate	EUR, CND AUS
16	K 4831400	Name plate	
17	131 2290413400	Pad lid	
18	K 4786900	Hinge	
19	A 2098701	Plate bottom	
20	4237921520	Terminal lug	
21	131 2611114800	Bushing	EUR, AUS CND
22	D 4442100	Bushing	
22	131 2611121300	Bushing	
23	131 2180115000	Leg	
24	131 2520323600	Felt	
25	131 2510214900	Spring mounting	
26	134 2520514400	Cushion	
27	D 3172600	Filter	
28	D 3172700	Cover	
29	134 2520211800	Rubber cushion	
30	134 2420113600	Screw	
31	C 4850600	Arm rest assy.	
32	D 2099901	Unit plate	
33	D 2098800	Base pick up	
34	D 3175200	Arm rest	
35	D 2045103	Turntable platter	
36	D 3133800	Support arm	
37	134 2520513600	Cushion	
38	B 4861500	Spindle lifting	
39	B 4852900	Screw	
40	E 4860900	Spring	
41	D 4853800	Actuator	
42	D 4853500	Knob	
43	134 2210612400	Holder	
44	134 2412320800	Arm	
45	E 4851600	Spring	
46	E 4854000	Rod	
47	134 2520512000	Cushion	
48	D 4310000	45 rpm adapter	
49	134 2411011100	Gear cycling	
50	134 2412211800	Trip	
51	D 4841700	Trip	
52	134 2410700400	Collar	
53	D 4843400	Pin	
54	134 0603511700	Return plate assy.	
55	134 2510129500	Spring	
56	134 2410821000	Plate	
57	E 4825200	Spring	
58	134 2412321100	Arm	
59	C 4862000	Plate PU fix assy.	
60	134 2412412200	Cam	
61	131 2420317501	Wave washer	
62	134 2510120500	Spring	
63	131 2420115102	Screw	

Ref. No.	Parts No.	Description	Version	
64	134 2412018300	Lever	EUR EUR EUR, AUS EUR, AUS EUR, AUS	
65	E 4860800	Rod		
66	134 2510134000	Spring		
67	D 4860700	Lever		
68	C 3176801	Tonearm assy.		
68-1	C 4847001	Headshell assy.		
68-2	C 2099601	Arm assy.		
68-3	C 4856400	Weight assy.		
69	F 4849000	Cartridge		
70	A 4849100	Head spacer		
71		Screw (-) 2.6 x 10		
72		Washer		
73		Nut		
74	E 4819102	Spacer		
75	134 2411710600	Support shaft		
76	A 4818400	Angle mount		
77	F 4846800	Link		
78	F 3132403	Wire shield assy.	EUR, AUS CND	
78	131 0400414402	Wire shield assy.		
79	C 4859900	Cord assy.	EUR, AUS CND	
79	C 4860000	Cord assy.		
80	4231921995	SW Micro	EUR EUR AUS CND	
81	4243200071	Power cord		
81	F 4771001	Power cord		
81	4243920390	Power cord		
82	F 3176300	Motor		
83	F 3171602	Power trans.		EUR AUS CND
83	F 3171702	Power trans.		
83	F 3171802	Power trans.		
84	4226204360	Printed circuit BD		
85	4612202700	Neon lamp		
85	4612220795	Neon lamp		
86	4226207950	PCB		
87	F 3170301	PCB	EUR, AUS CND EUR, AUS CND	
R1	R3D XBJ333A	OMF 33KΩ 2W		
R1	R3A XBJ103A	OMF 10KΩ 1W		
C1	C2E FRM103C	MYLAR 0.01μF 250V		
C1	F 4795000	Condenser		
88	4236200640	Plug 3P		
89	F 3170302	PCB		
C3	C1C RE108A	ELECT 1000μ 16V		
D1	DGGW02	Diode bridge		
90	131 0400626800	Cord assy.		
91	F 3170303	PCB		
R6	R2E DPJ103A	CARBO 10KΩ 1/4W		
VR1	F 3170502	VR 5KB		
VR2	4222210400	SEMI FIXED 20KB		
VR3	4222210400	SEMI FIXED 20KB		
SW2	F 3175400	SW push 1 key	EUR	
92	4234921631	Fuse		
93	134 2630211500	Belt		
94	C 4861400	Shaft T.T. assy.		
95	134 2640112800	Pulley motor		
96	D 2062300	Turntable platter mat		

SCREWS, WASHERS AND NUTS

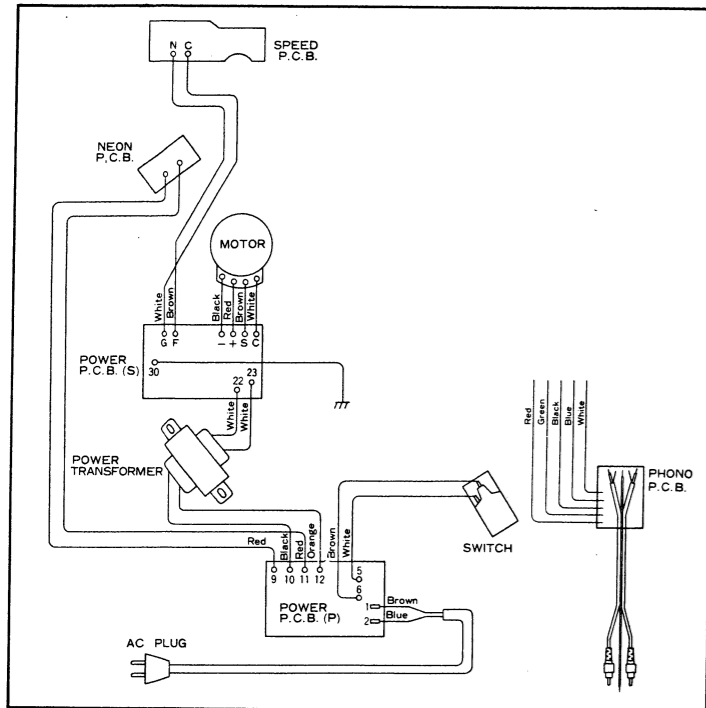
Ref. No.	Description
201	⊕ Brazier head taptite screw B φ2.6 x 6
202	⊕ Brazier head taptite screw B φ3 x 6
203	⊕ Brazier head taptite screw B φ3 x 8
204	⊕ Brazier head taptite screw B φ3 x 10
205	⊕ Brazier head taptite screw B φ3 x 12
206	⊕ Brazier head taptite screw B (Bronze) φ3 x 12
207	⊕ Brazier head taptite screw B φ3 x 16
208	⊕ Brazier head taptite screw B φ3 x 25
209	⊕ Brazier head taptite screw B with plain washer φ3 x 8
210	⊕ Brazier head taptite screw B with plain washer φ3 x 10
211	⊕ Pan head taptite screw B φ3 x 35

Ref. No.	Description
212	⊕ Pan head taptite screw B with plain washer φ2.6 x 6
213	⊕ Pan head taptite screw C φ3 x 14
214	⊕ Pan head screw with spring washer M3 x 5
215	Nylon washer 3φ x 12φ x 1t
216	E type washer 2φ
217	C type washer 5φ
218	Stop ring CSTV-2
219	Stop ring CSTV-3

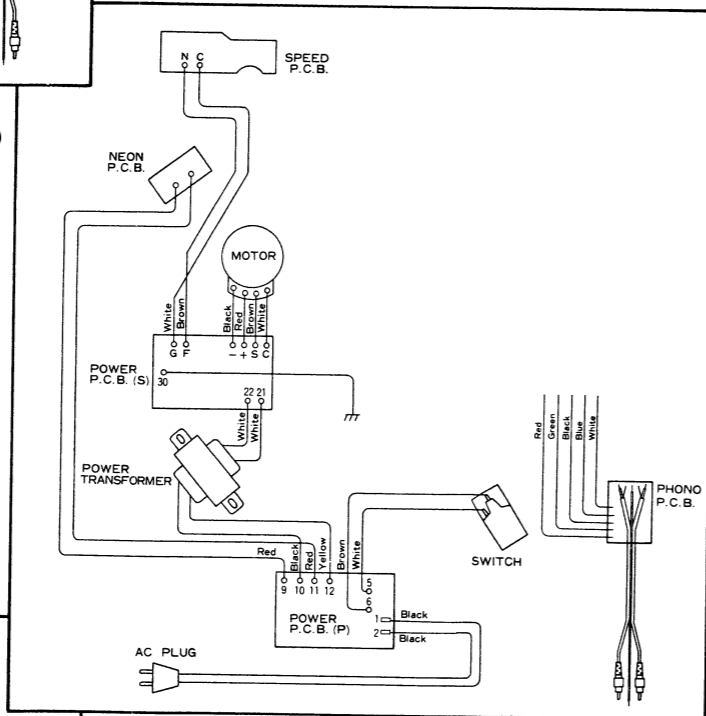


• 3 •

• 4 •

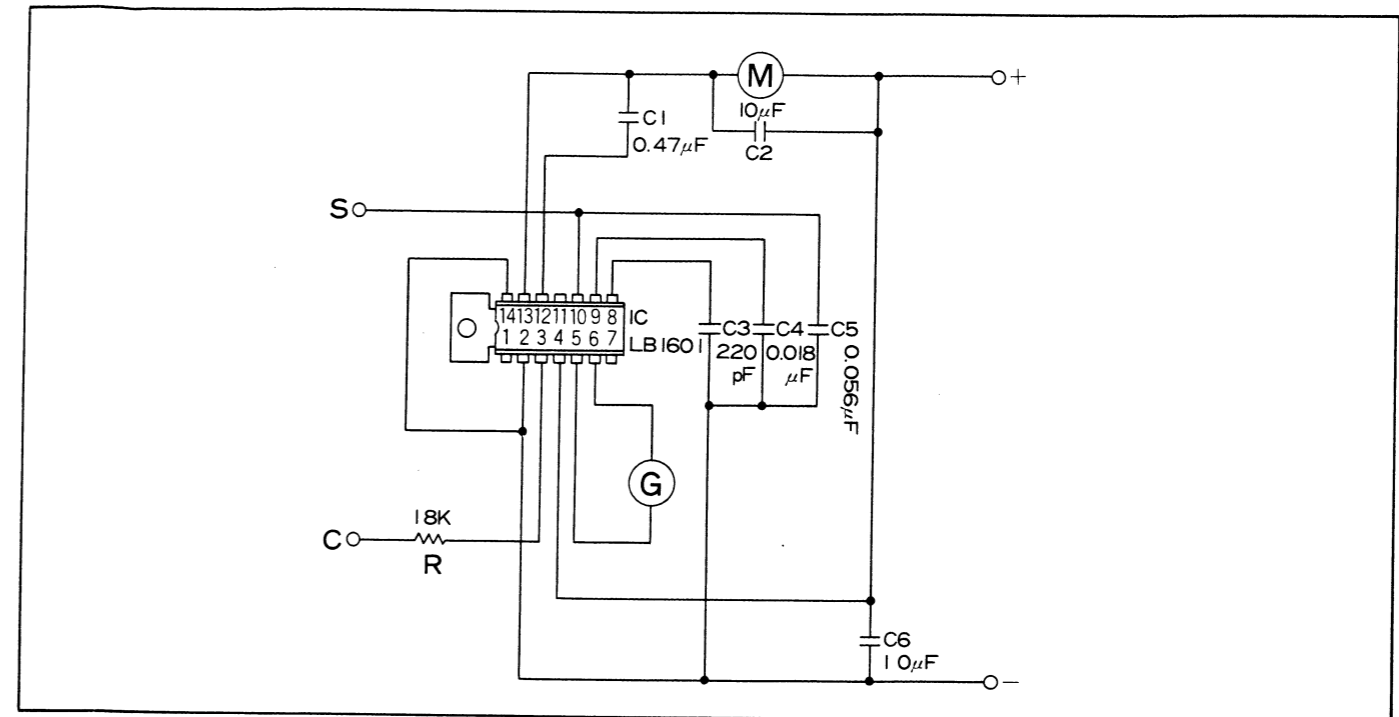
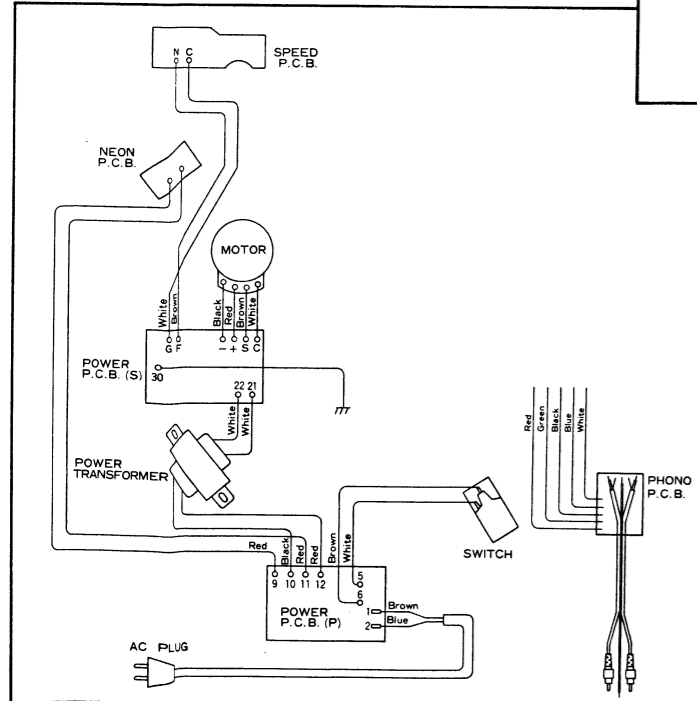


Version EUR



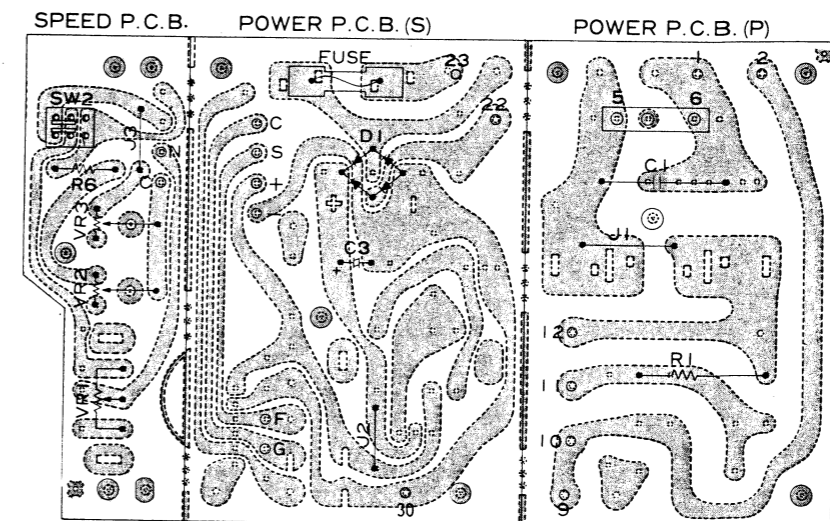
Version CND

Version AUS

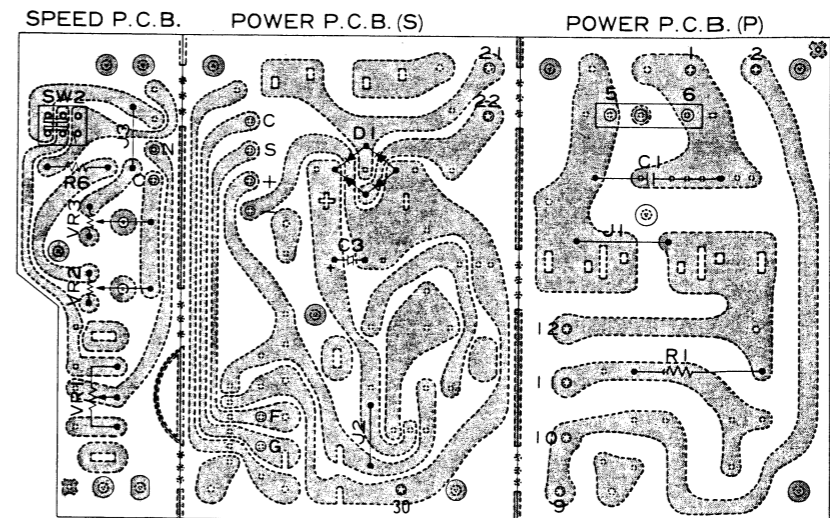


PRINTED CIRCUIT BOARD

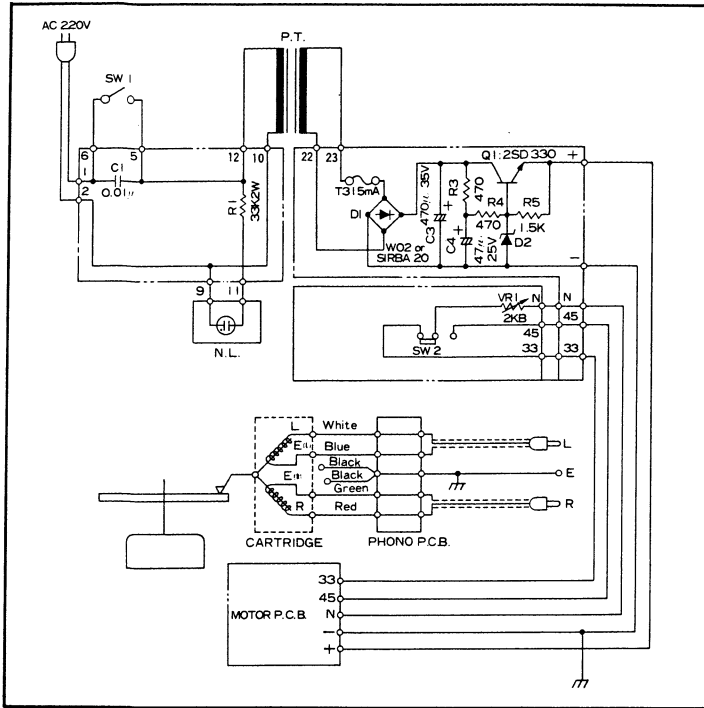
Version EUR



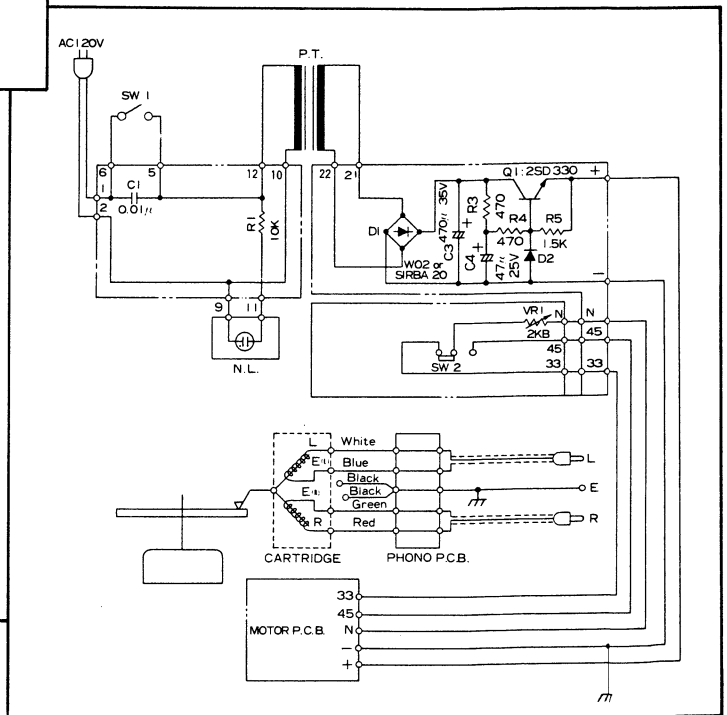
Version CND, AUS



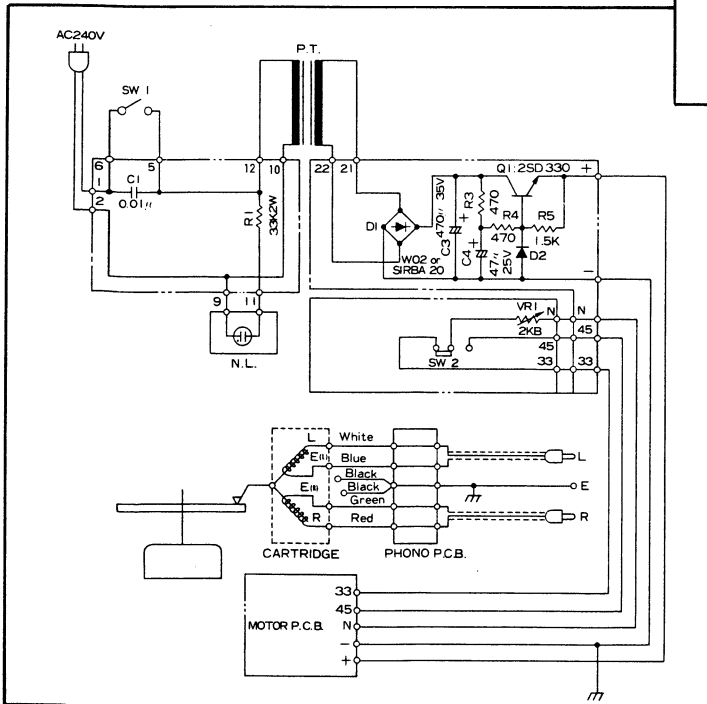
Version EUR



Version CND



Version AUS



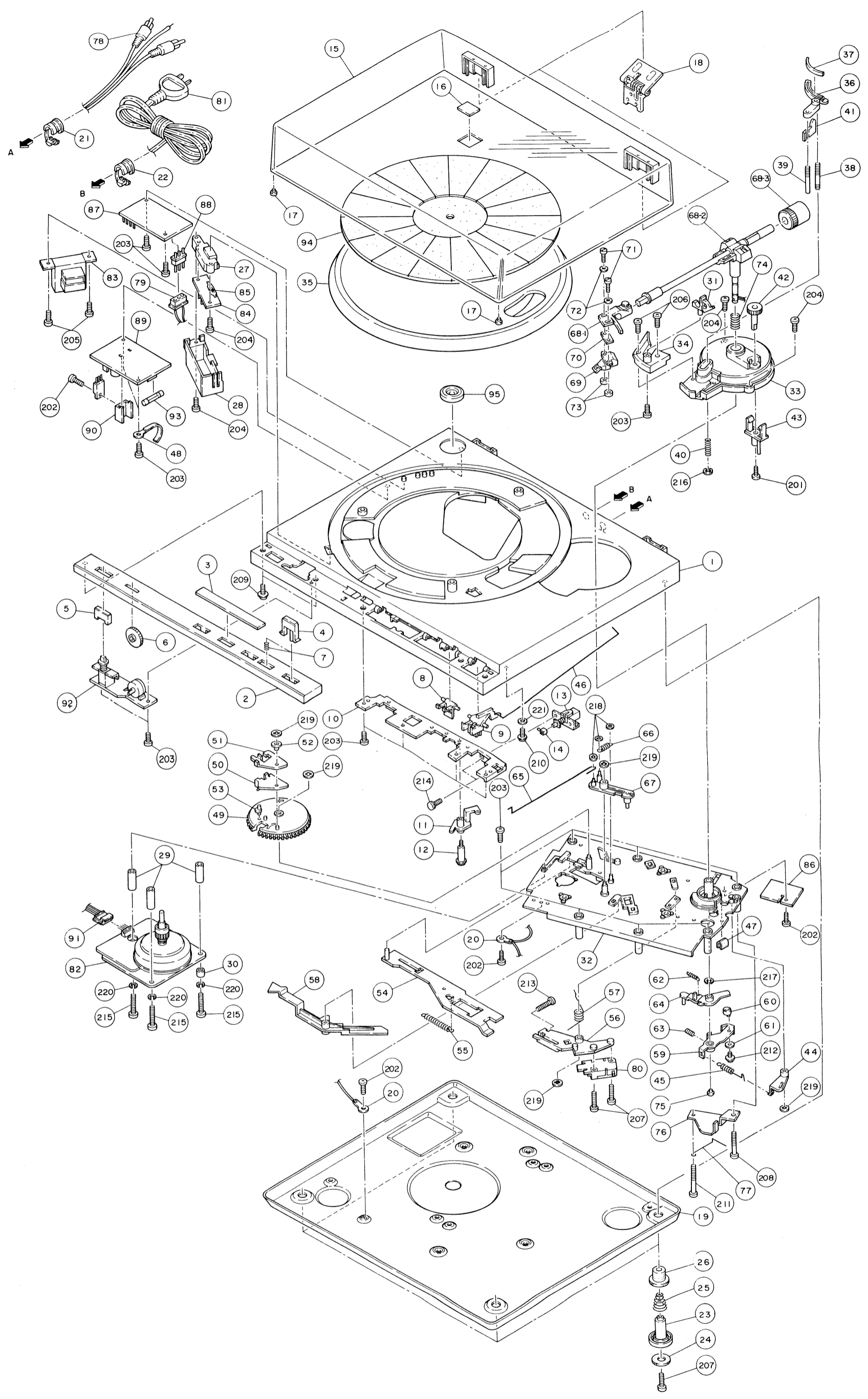
Ref. No.	Parts No.	Description	Version
1	D 1005400	Cabinet	
2	D 2098604	Panel front	EUR, CND
2	D 2098603	Panel front	AUS
3	K 4861601	Plate decorate	
4	D 4851300	Knob	
5	D 4851400	Knob	
6	D 4849801	Knob	
7	E 4856000	Spring	
8	D 4852100	Hinge	
9	D 3175300	Hinge	
10	A 3173500	Angle mount	
11	D 4853700	Arm	
12	134 2410627000	Shaft	
13	4231202400	SW push 1 key (O)	
14	134 2410920000	Pin	
15	D 2098300	Lid	
16	K 4799800	Name plate	EUR, CND
16	K 4831400	Name plate	AUS
17	131 2290413400	Pad lid	
18	K 4786900	Hinge	
19	A 2098700	Plate bottom	
20	4237921520	Terminal lug	
21	131 2611114800	Bushing	
22	D 4442100	Bushing	EUR, AUS
22	131 2611121300	Bushing	CND
23	131 2180115000	Leg	
24	131 2520323600	Felt	
25	131 2510214900	Spring mounting	
26	134 2520514400	Cushion	
27	D 3172600	Filter	
28	D 3172700	Cover	
29	131 2420832103	Spacer	
30	D 4712109	Spacer	
31	C 4850600	Arm rest assy.	
32	D 2099900	Unit plate	
33	D 2098800	Base pick up	
34	D 3175200	Arm rest	
35	D 2045101	Turntable platter	
36	D 3133800	Support arm	
37	134 2520513600	Cushion	
38	B 4861500	Spindle lifting	
39	B 4852900	Screw	
40	E 4860900	Spring	
41	D 4853800	Actuator	
42	D 4853500	Knob	
43	134 2210612400	Holder	
44	134 2412320800	Arm	
45	E 4851600	Spring	
46	E 4854000	Rod	
47	134 2520512000	Cushion	
48	131 0301610400	Clamp wire assy.	
49	134 2411011100	Gear cycling	
50	134 2412211800	Trip	
51	D 4841700	Trip	
52	134 2410700400	Collar	
53	D 4843400	Pin	
54	134 0603511700	Return plate assy.	
55	134 2510129500	Spring	
56	134 2410821000	Plate	
57	E 4825200	Spring	
58	134 2412321100	Arm	
59	C 4862000	Plate PU fix assy.	

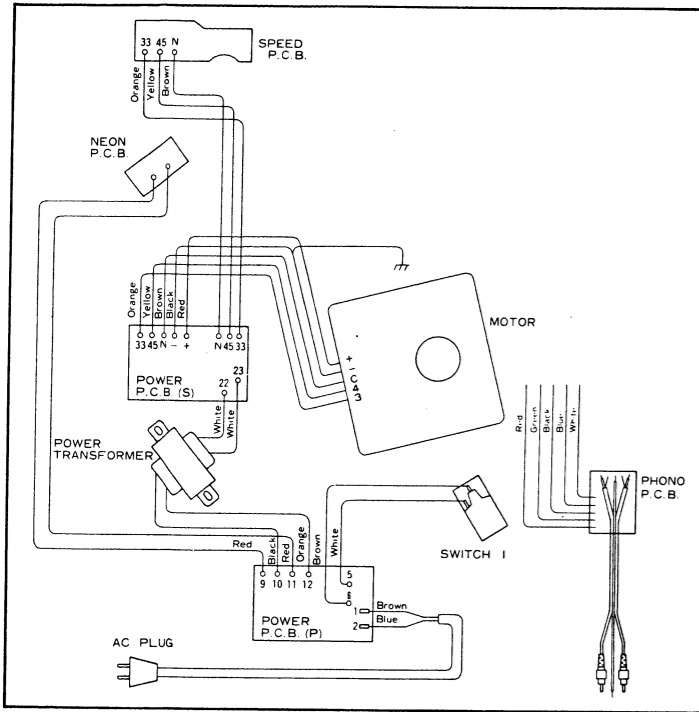
Ref. No.	Parts No.	Description	Version
60	134 2412412200	Cam	
61	131 2420317501	Wave washer	
62	134 2510120500	Spring	
63	131 2420115102	Screw	
64	134 2412018300	Lever	
65	E 4860800	Rod	
66	134 2510134000	Spring	
67	D 4860700	Lever	
68	C 3176801	Tonearm assy.	
68-1	C 4847001	Headshell assy.	
68-2	C 2099601	Arm assy.	
68-3	C 4856400	Weight assy.	
69	F 4849000	Cartridge	EUR
70	A 4849100	Head spacer	EUR
71		Screw (-) 2.6 x 10	EUR, AUS
72		Washer	EUR, AUS
73		Nut	EUR, AUS
74	E 4819102	Spacer	
75	134 2411710600	Support shaft	
76	A 4818400	Angle mount	
77	F 4846800	Link	
78	F 3132403	Wire shield assy.	EUR, AUS
78	131 0400414402	Wire shield assy.	CND
79	C 4859900	Cord assy.	EUR, AUS
79	C 4860000	Cord assy.	CND
80	4231921995	SW Micro	
81	4243200071	Power cord	EUR
81	F 4771001	Power cord	AUS
81	4243920390	Power cord	CND
82	C 2099000	Motor assy.	
83	F 3171102	Power trans.	EUR
83	F 3171202	Power trans.	AUS
83	F 3171302	Power trans.	CND
84	4226204360	Printed circuit BD	
85	4612202700	Neon lamp	
85	4612220795	Neon lamp	
86	4226207950	PCB	
87	F 3170301	PCB	
R1	R3D XBJ333A	OMF 33KΩ 2W	EUR, AUS
R1	R3A XBJ103A	OMF 10KΩ 1W	CND
C1	C2E FRM103C	MYLAR 0,01μF 250V	EUR, AUS
C1	F 4795000	Condenser	CND
88	4236200640	Plug 3P	
89	F 3170302	PCB	
R3	R2E DBJ471A	CARBO 470Ω 1/4W	
R4	R2E DPJ471A	CARBO 470Ω 1/4W	
R5	R2E DPJ152A	CARBO 1,5KΩ 1/4W	
C3	C1V RE477A	ELECT 470μF 35V	
C4	C1E RE476A	ELECT 47μF 25V	
D1	DGG W02	Diode bridge	
D2	DJJ WZ192	Zener diode	
Q1	203 5857033040	2SD 330D	
Q1	203 5857033050	2SD 330E	
90	131 2620121500	Plate heat sink	
91	C 4849300	Cord assy.	
92	F 3170303	PCB	
F	3170501	VR 2KB	
SW2	F 3175400	SW push 1 key	
93	4234921411	Fuse	EUR
94	D 2062300	Turntable platter mat	
95	D 4310000	45 rpm adapter	

SCREWS, WASHERS AND NUTS

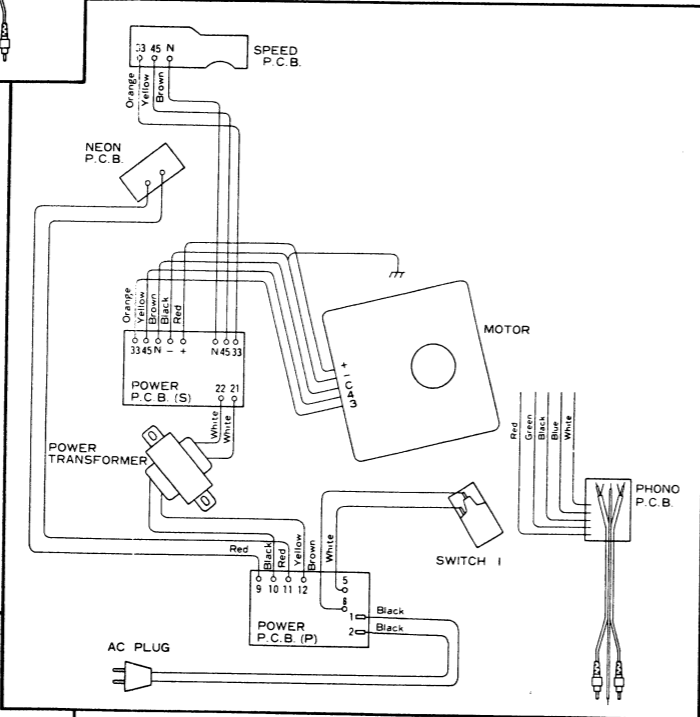
Ref. No.	Description
201	⊗ Brazier head taptite screw B φ2.6 x 6
202	⊗ Brazier head taptite screw B φ3 x 6
203	⊗ Brazier head taptite screw B φ3 x 8
204	⊗ Brazier head taptite screw B φ3 x 10
205	⊗ Brazier head taptite screw B φ3 x 12
206	⊗ Brazier head taptite screw B (Bronze) φ3 x 12
207	⊗ Brazier head taptite screw B φ3 x 16
208	⊗ Brazier head taptite screw B φ3 x 25
209	⊗ Brazier head taptite screw B with plain washer φ3 x 8
210	⊗ Brazier head taptite screw B with plain washer φ3 x 10
211	⊗ Pan head taptite screw B φ3 x 35
212	⊗ Pan head taptite screw B with plain washer φ2.6 x 6

Ref. No.	Description
213	⊗ Pan head taptite screw C φ3 x 14
214	⊗ Pan head screw with spring washer M3 x 6
215	⊗ Pan head screw M4 x 35
216	E type washer 2φ
217	C type washer 5φ
218	Stop ring CSTW-2
219	Stop ring CSTW-3
220	Spring washer 4φ
221	Nylon washer 3φ x 12φ x 1t



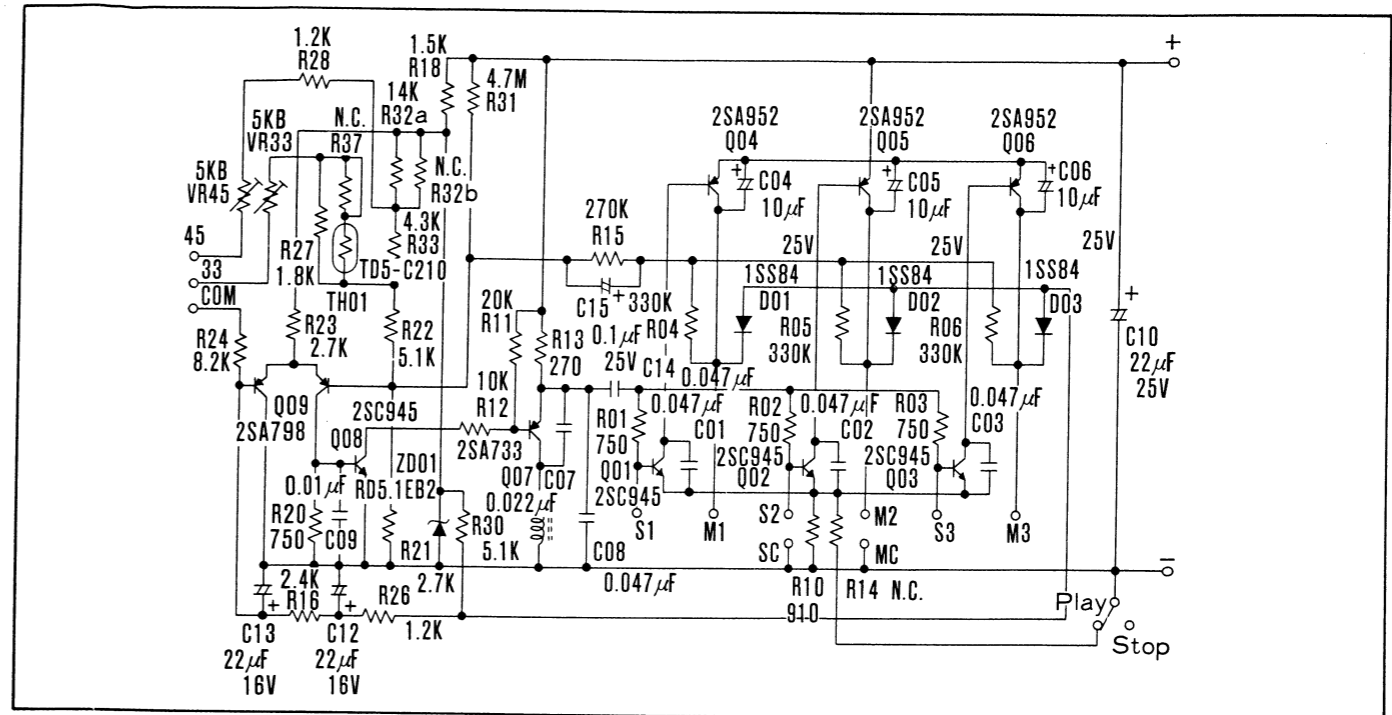
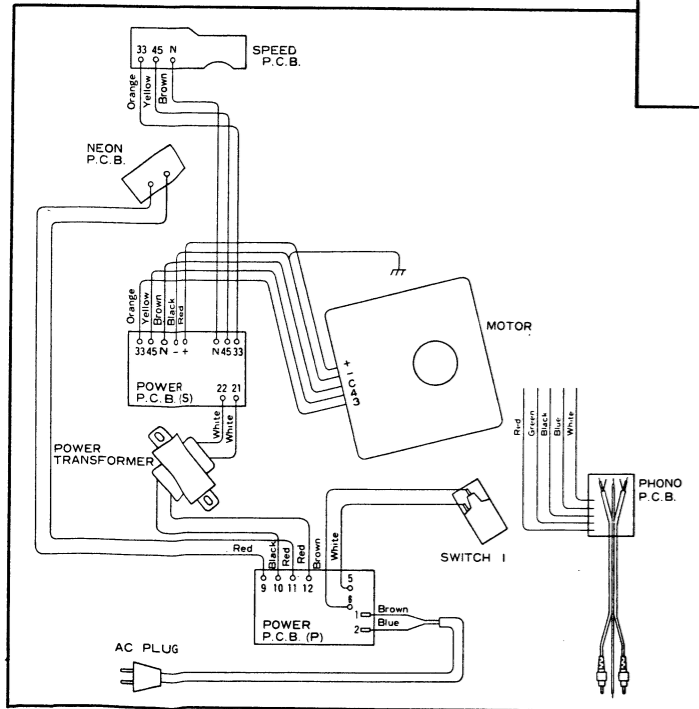


Version EUR

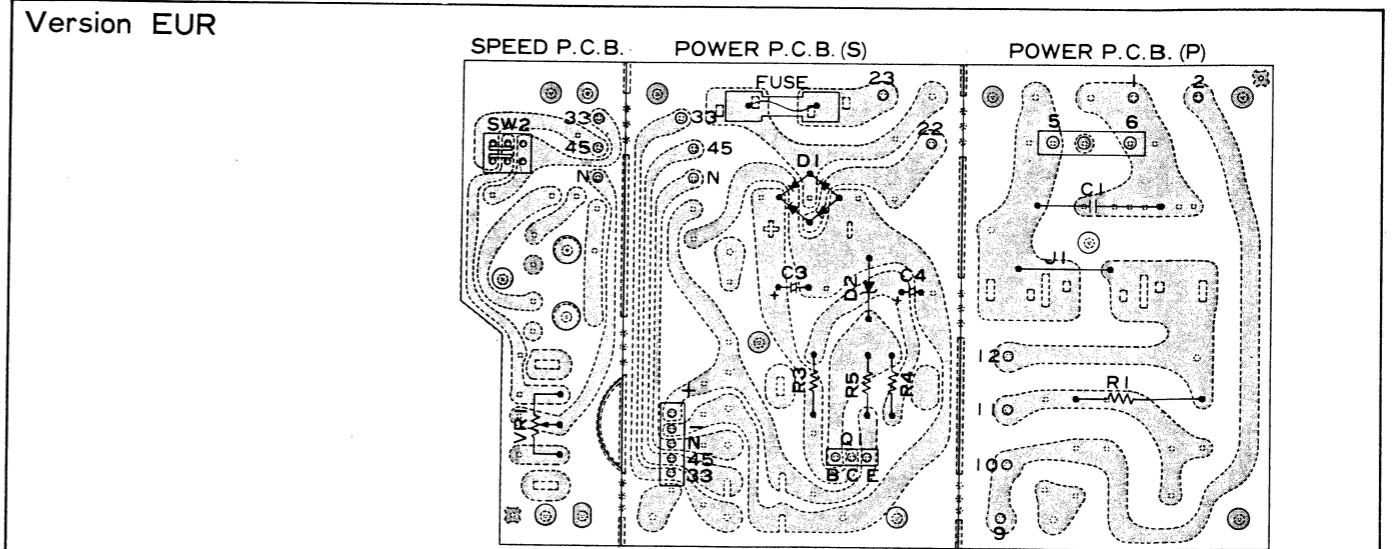


Version CND

Version AUS



PRINTED CIRCUIT BOARD



Version CND, AUS

