

*Classé*

---

*CDP-.3*  
*INTEGRATED CD PLAYER*

*SERVICE MANUAL*  
*v 1.0*

---

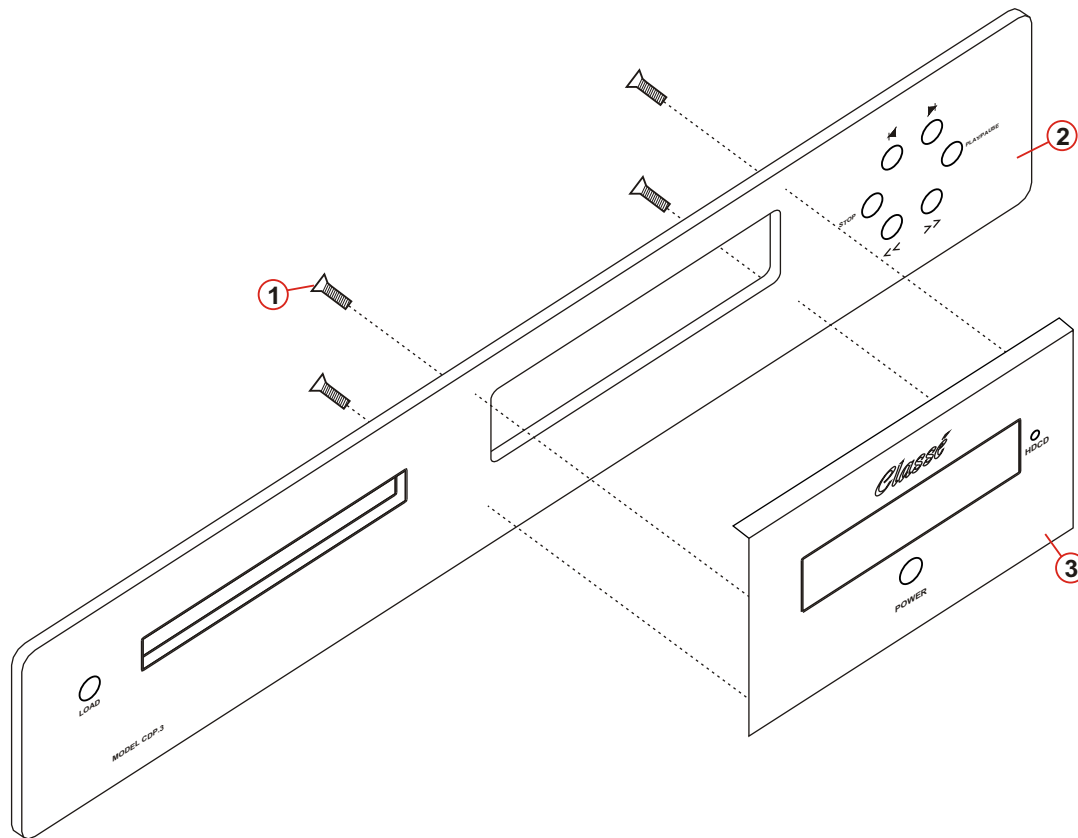
# Index

---

Mechanical Assembly	3
PC Boards	17
Testing Procedures	30
Diagrams	33

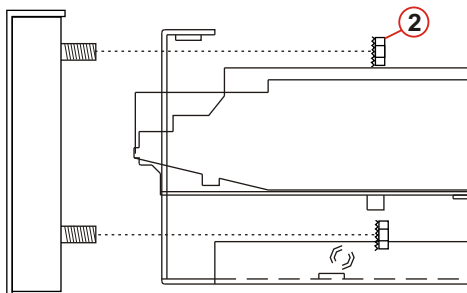
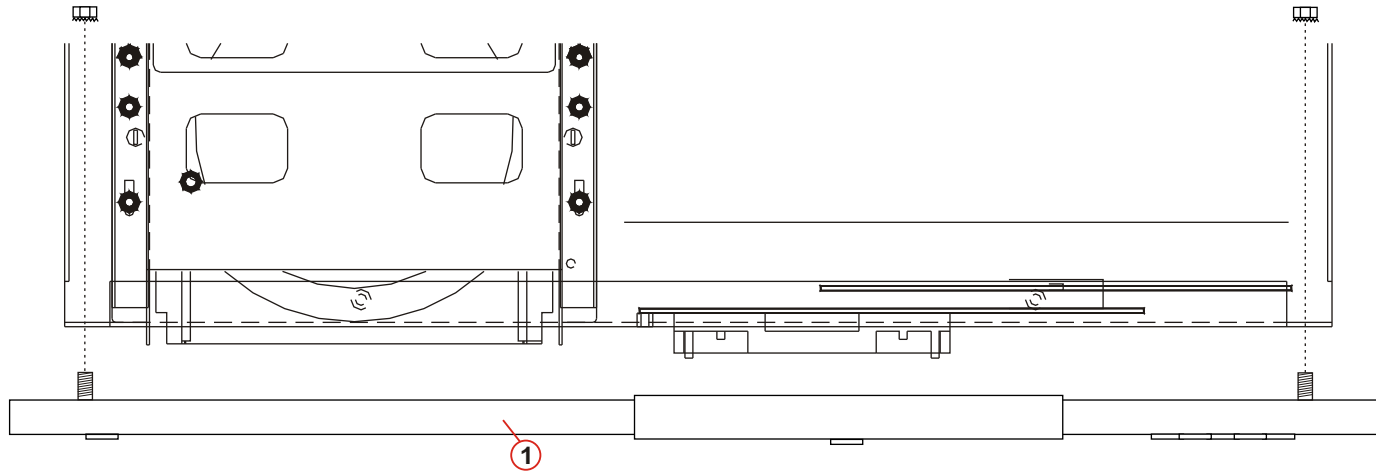
**CDP .3**

**MECHANICAL  
ASSEMBLY**



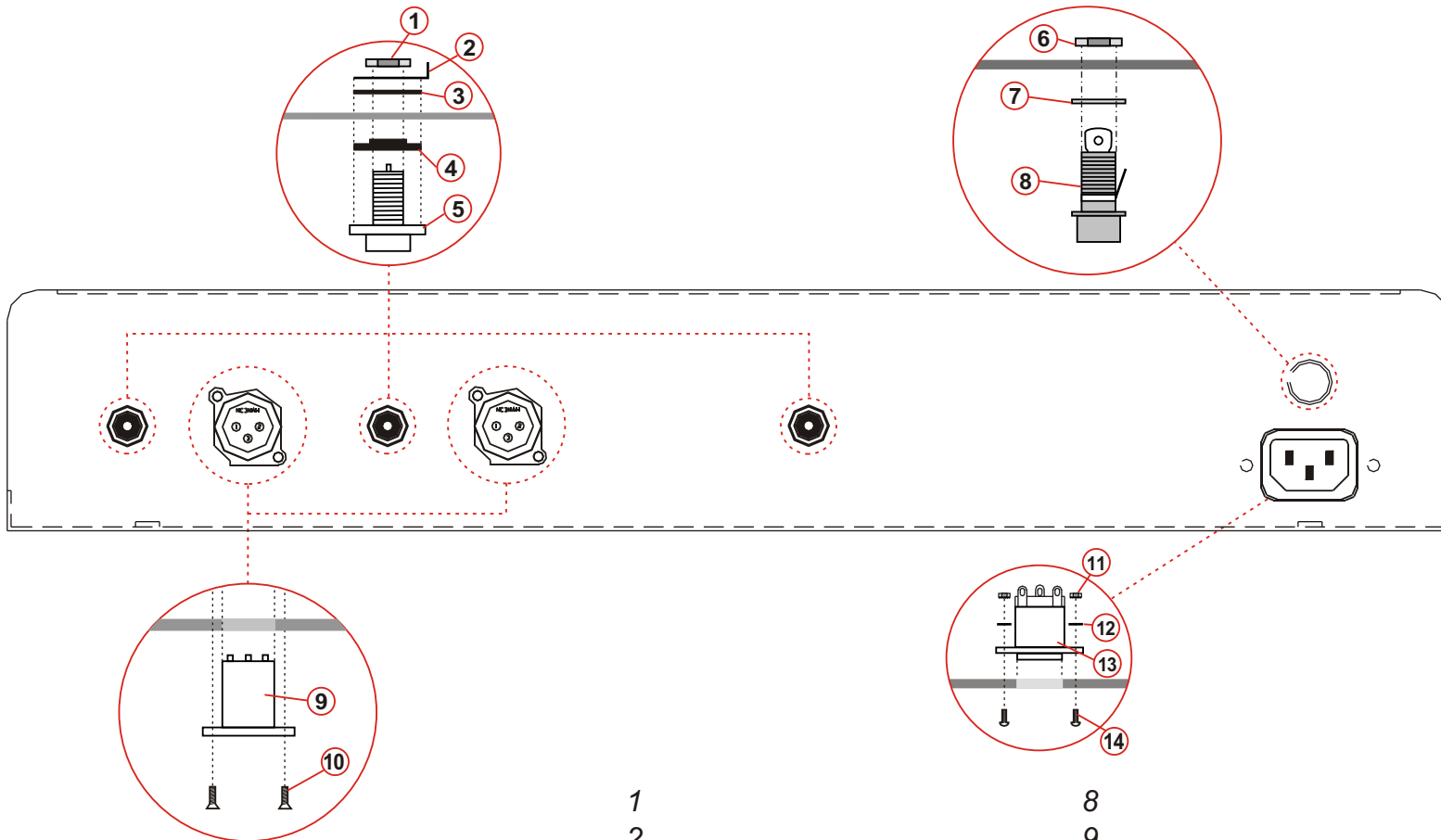
- 1 MS-2347 PHILIPS
- 2 L1C2XR02
- 3 L1C3XR03

**TOP VIEW**



**SIDE VIEW**

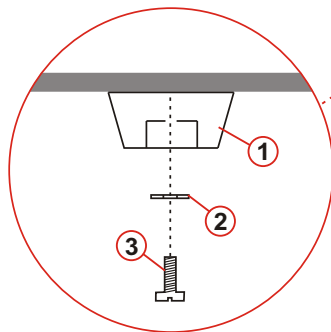
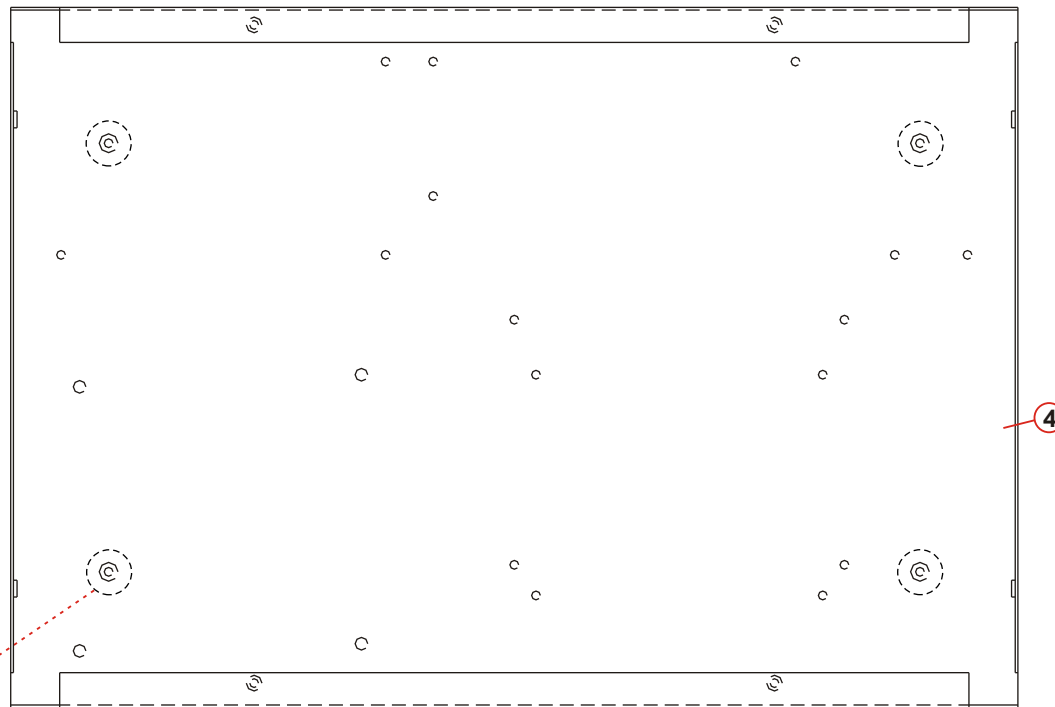
- 1 L1C2XR02
- 2



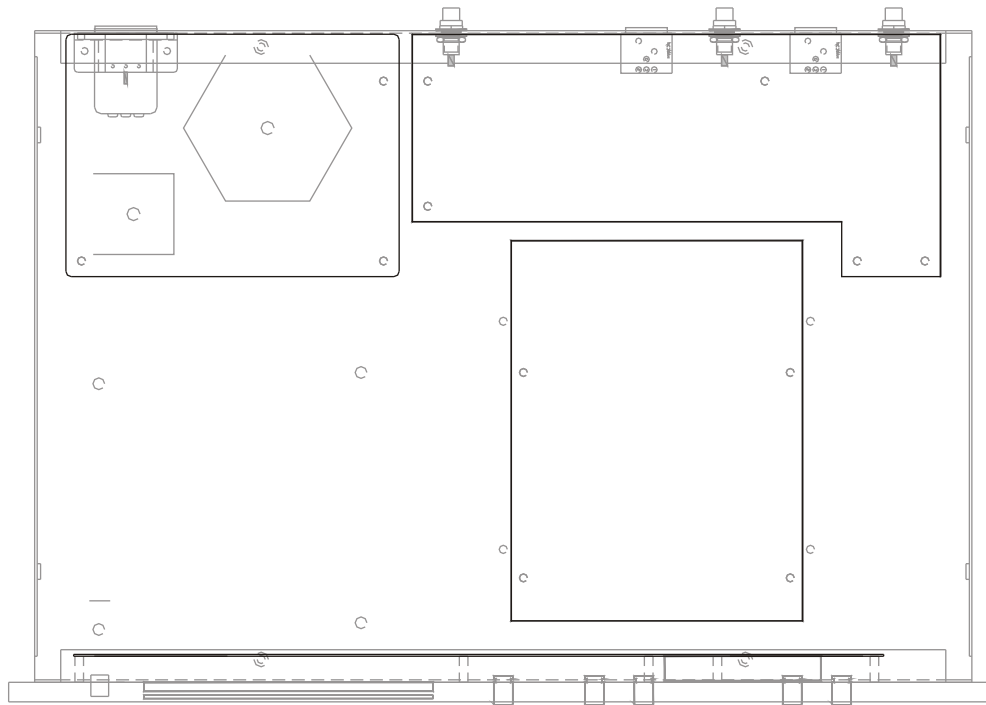
- 1
- 2
- 3
- 4
- 5
- 6
- 7

- 8
- 9
- 10
- 11
- 12
- 13
- 14

**TOP VIEW**

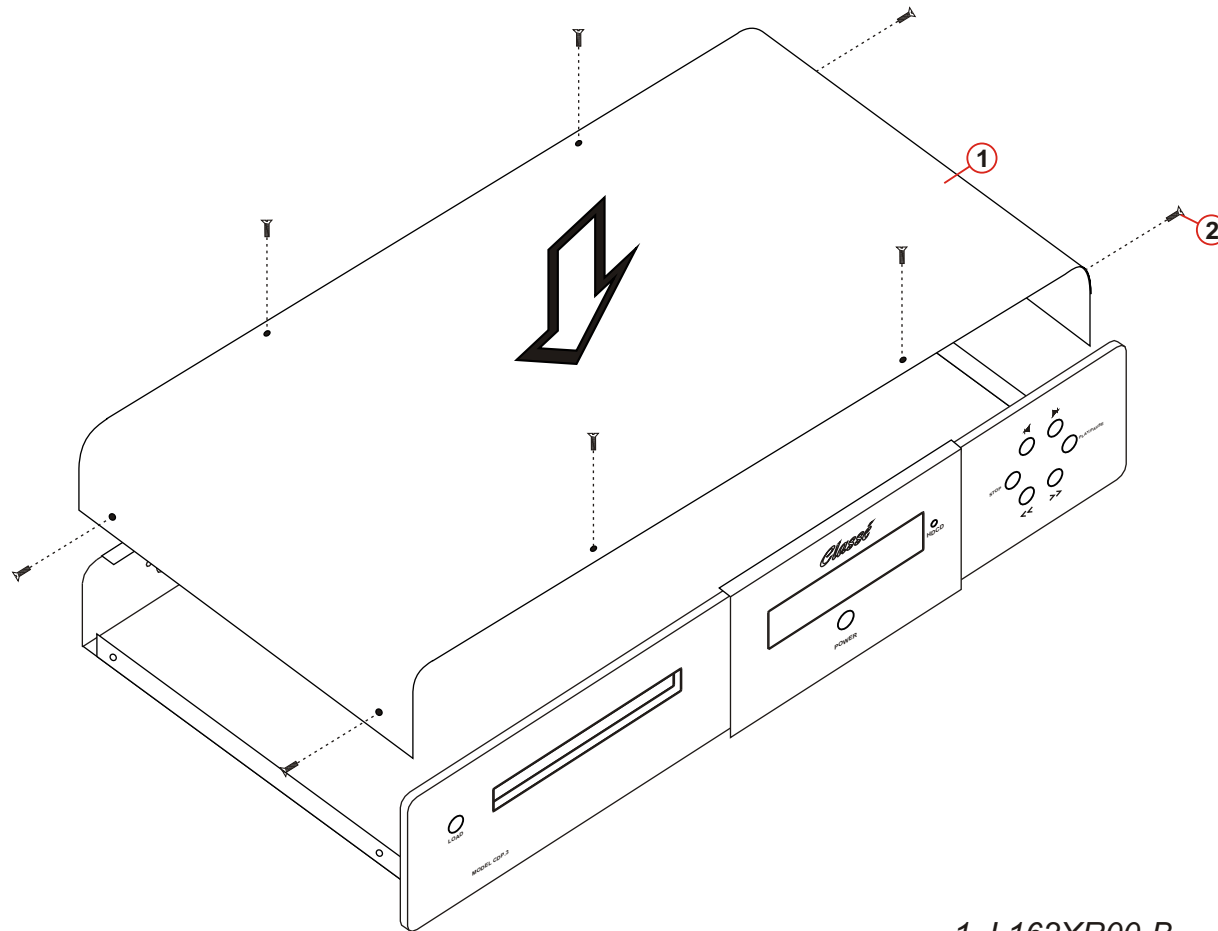


- 1 PLA CAPFR1
- 2 HDW #8 FLAT WASHER
- 3 BZO 8-32x3/4" BHCS
- 4 L161XR07

**TOP VIEW**

- 1 AVR BO51XR02
- 2 AVR BO50XR03
- 3 AVR BO1CXR00
- 4 TRANSFORMER





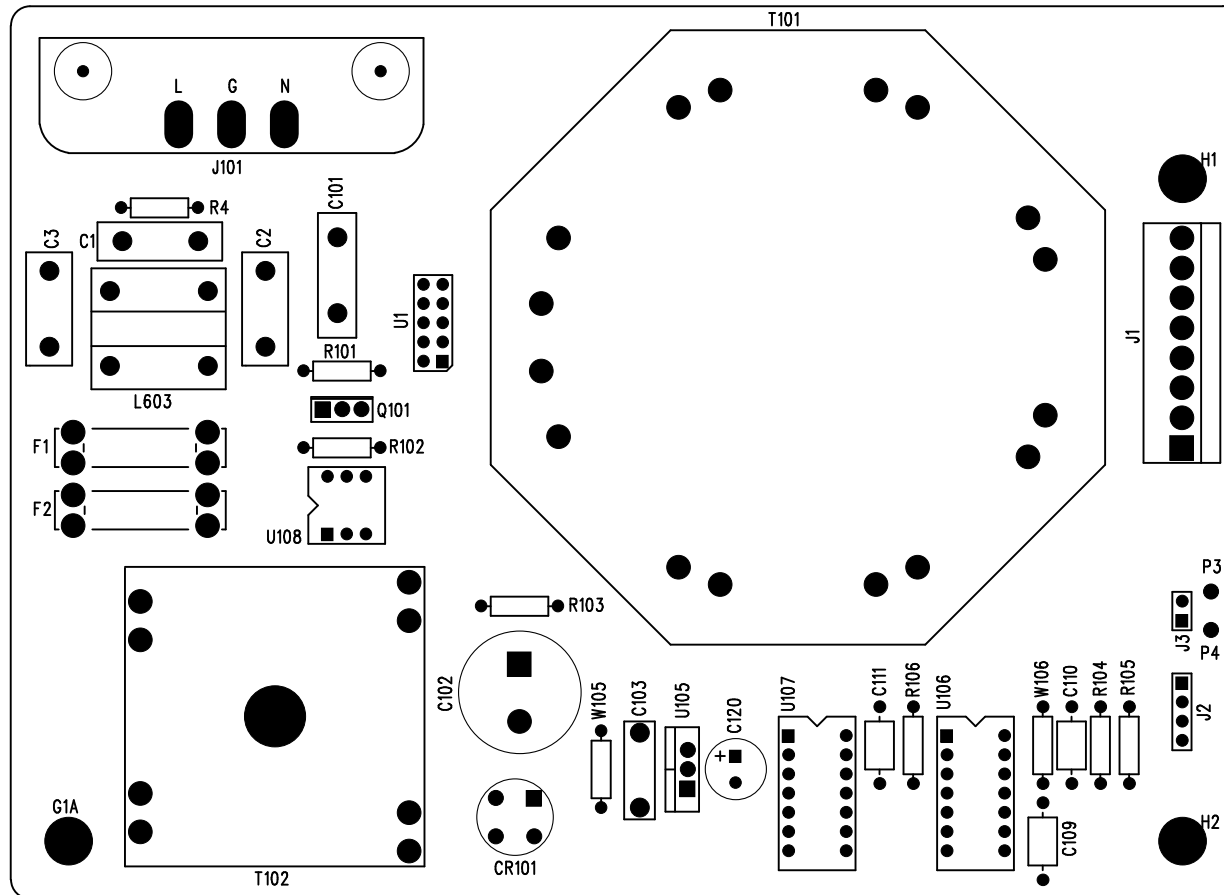
1 L162XR00-B

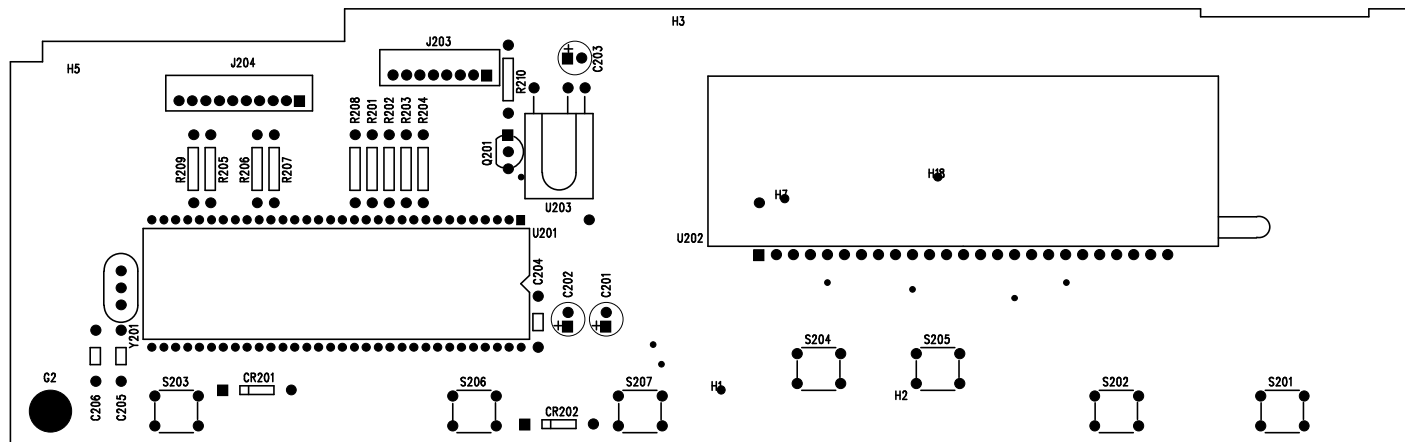
2

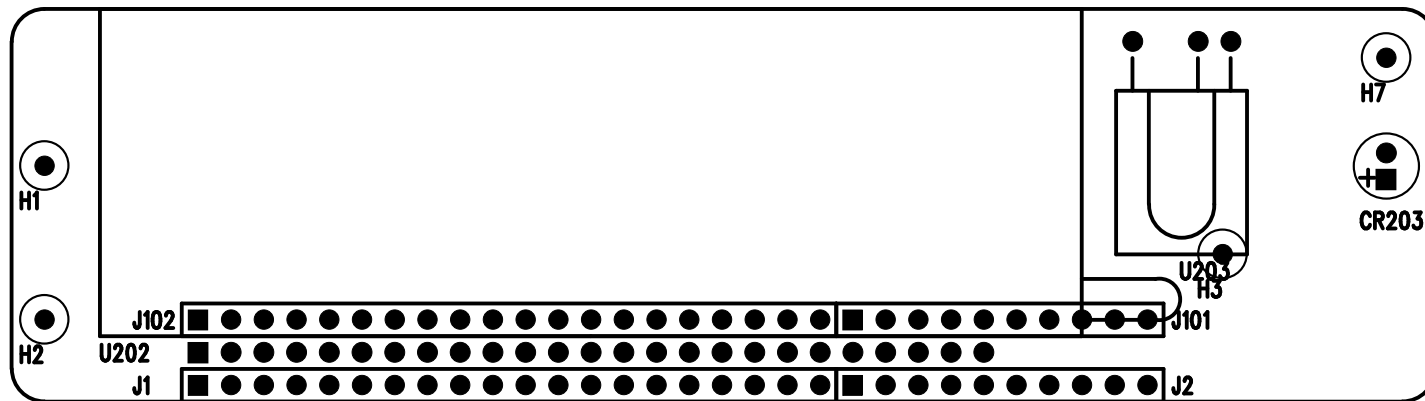
**CDP .3**

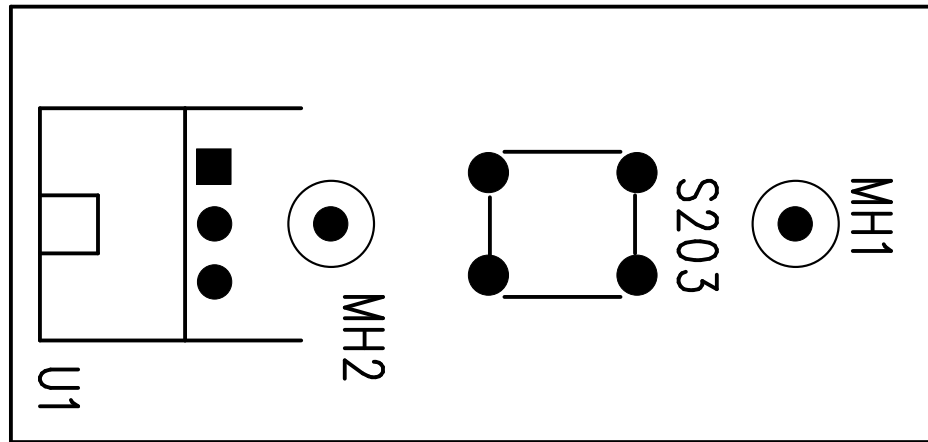
**PC BOARDS**











**CDP .3**

**TESTING  
PROCEDURES**



#### A. INSPECTION

-visually check all parts for: solder bridges or splashes, backwards or missing component orientation.

#### B. POWER SUPPLY VOLTAGES

1. CR105-21V
2. CR102+21
3. CR302-5V
4. CR301+5V
5. CR104-12V
6. CR103+12V
7. R305-12V
8. R301+12V
9. C202+5V

#### C. DAC OFFSETS CALIBRATION

-maximum 6mV

1. Measure DC voltage of J404A to J404B LGND.  
Divide 5127 by this number choose the closest factory select resistor value in K OHMS for 311 (if neg.) on R 313 (if pos.).
2. Measure DC voltage of J403A to J403B RGND.  
Divide 5127 by this number and choose the closest factory select resistor value in K OHMS for R 306 (if neg.) or R 308 (if pos.).

#### D. CHECK ANALOG AUDIO OUTPUT SIGNAL

#### A. INSPECTION

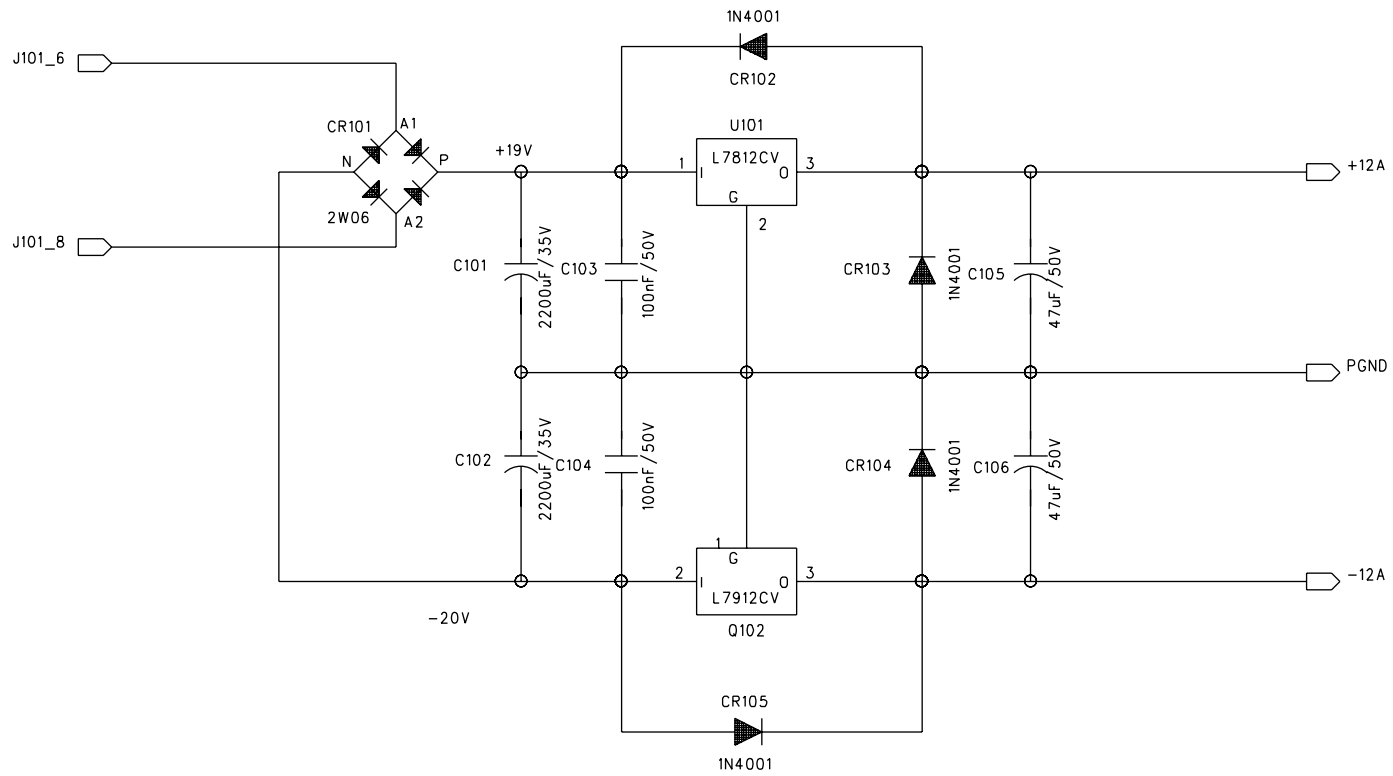
-visually check all parts for: solder bridges or splashes, backwards or missing components, component orientation.

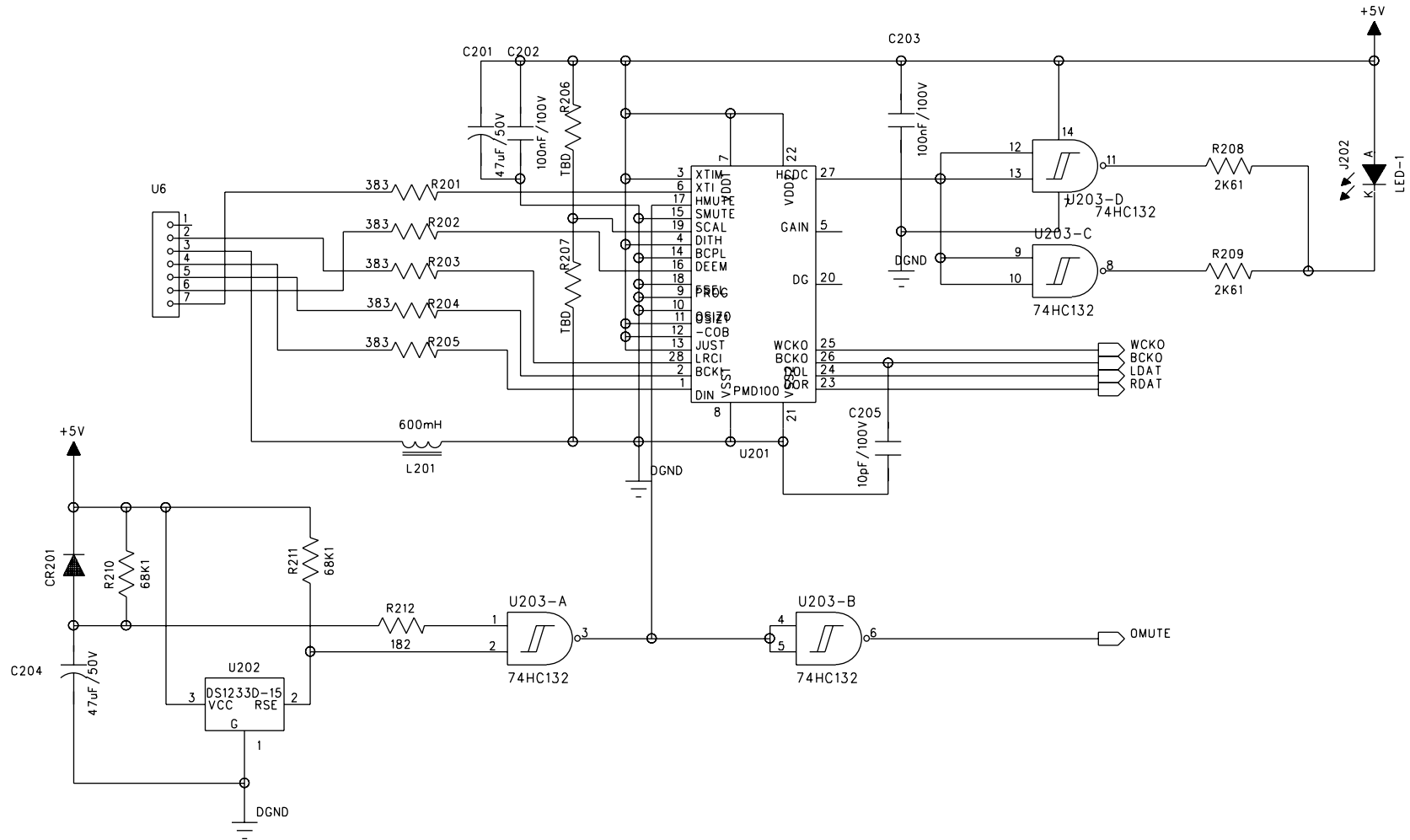
#### B. FUNCTION

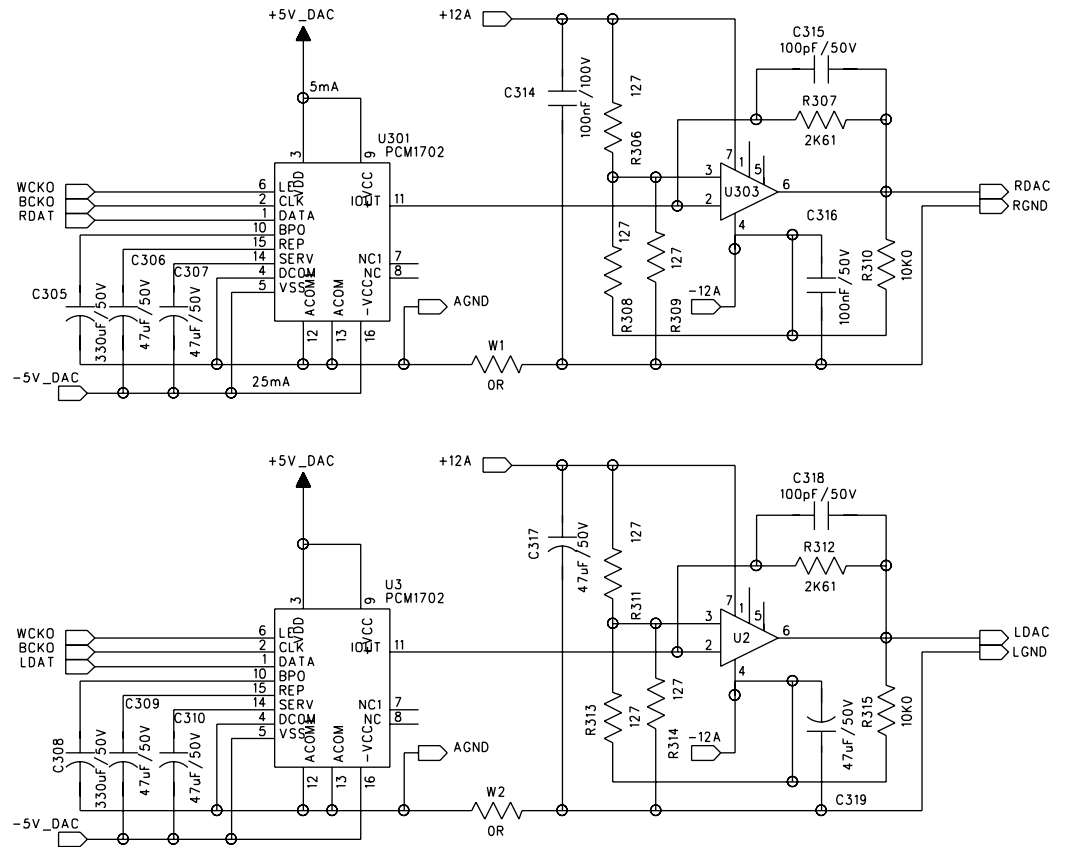
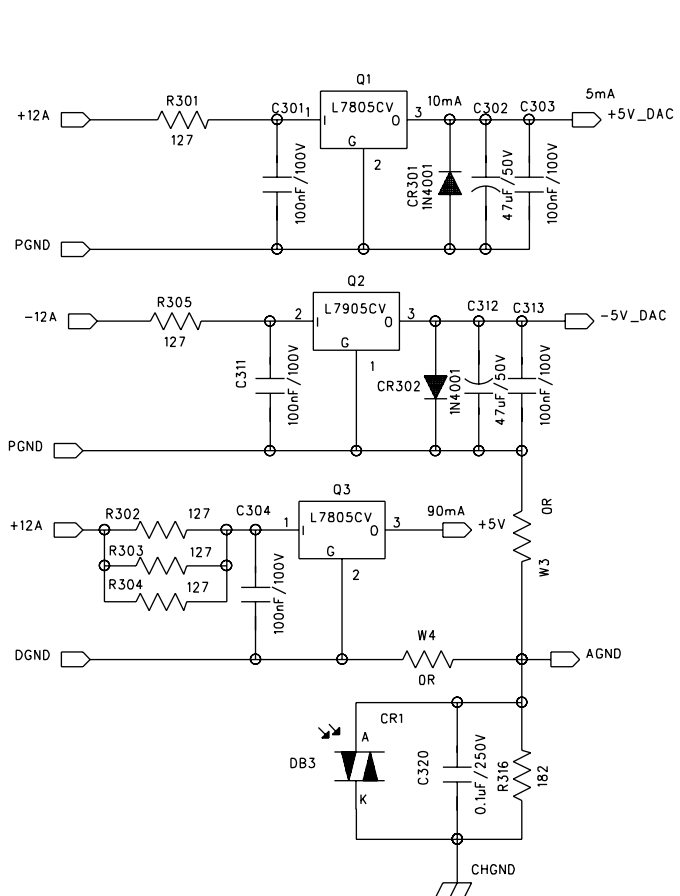
1. Switch on unit.
2. Insert HDCD disk.
3. Press switch buttons if all are working according to their functions.
4. LED must light during play.
5. Check remote control.

**CDP .3**

**DIAGRAMS**

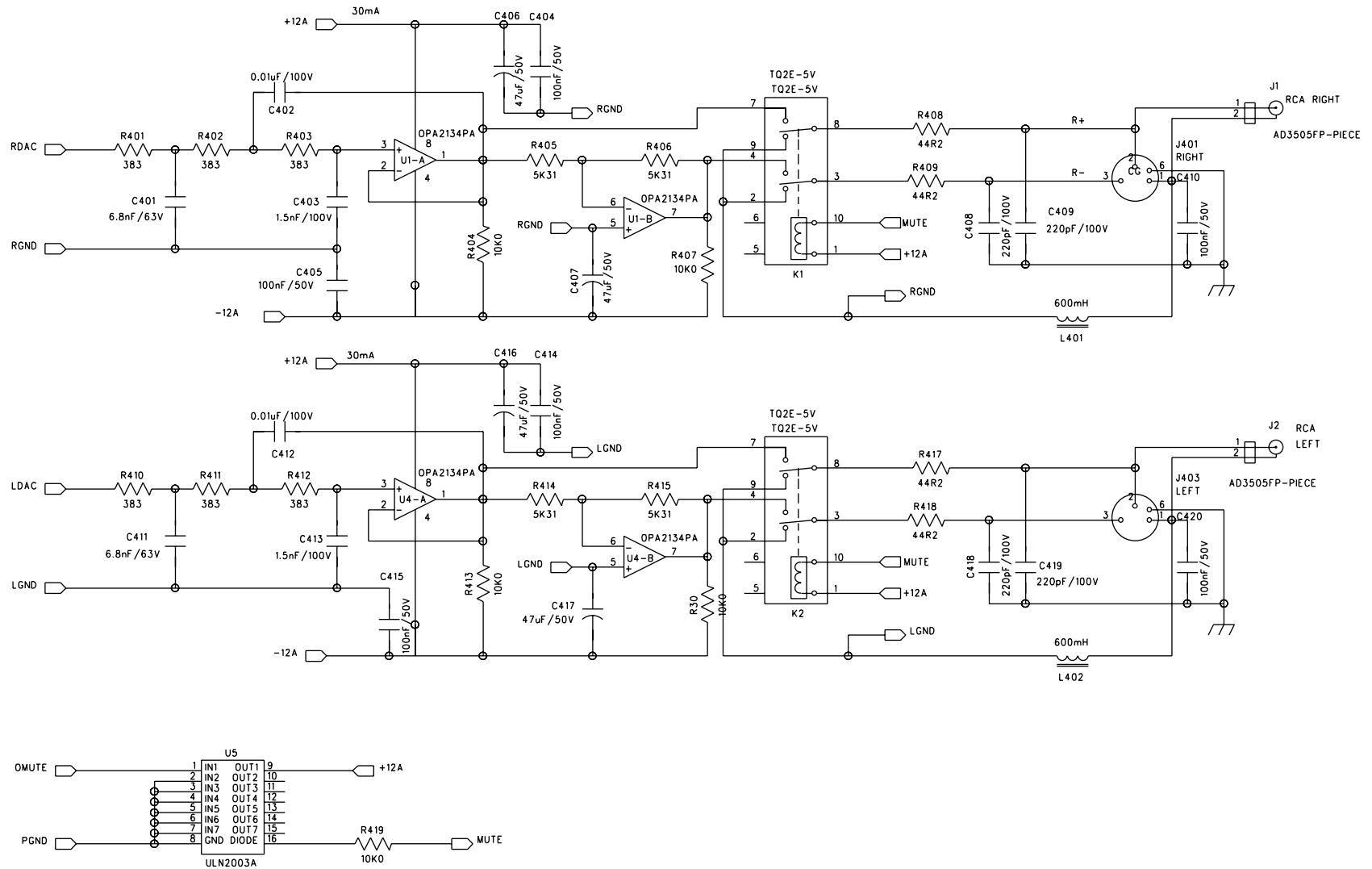




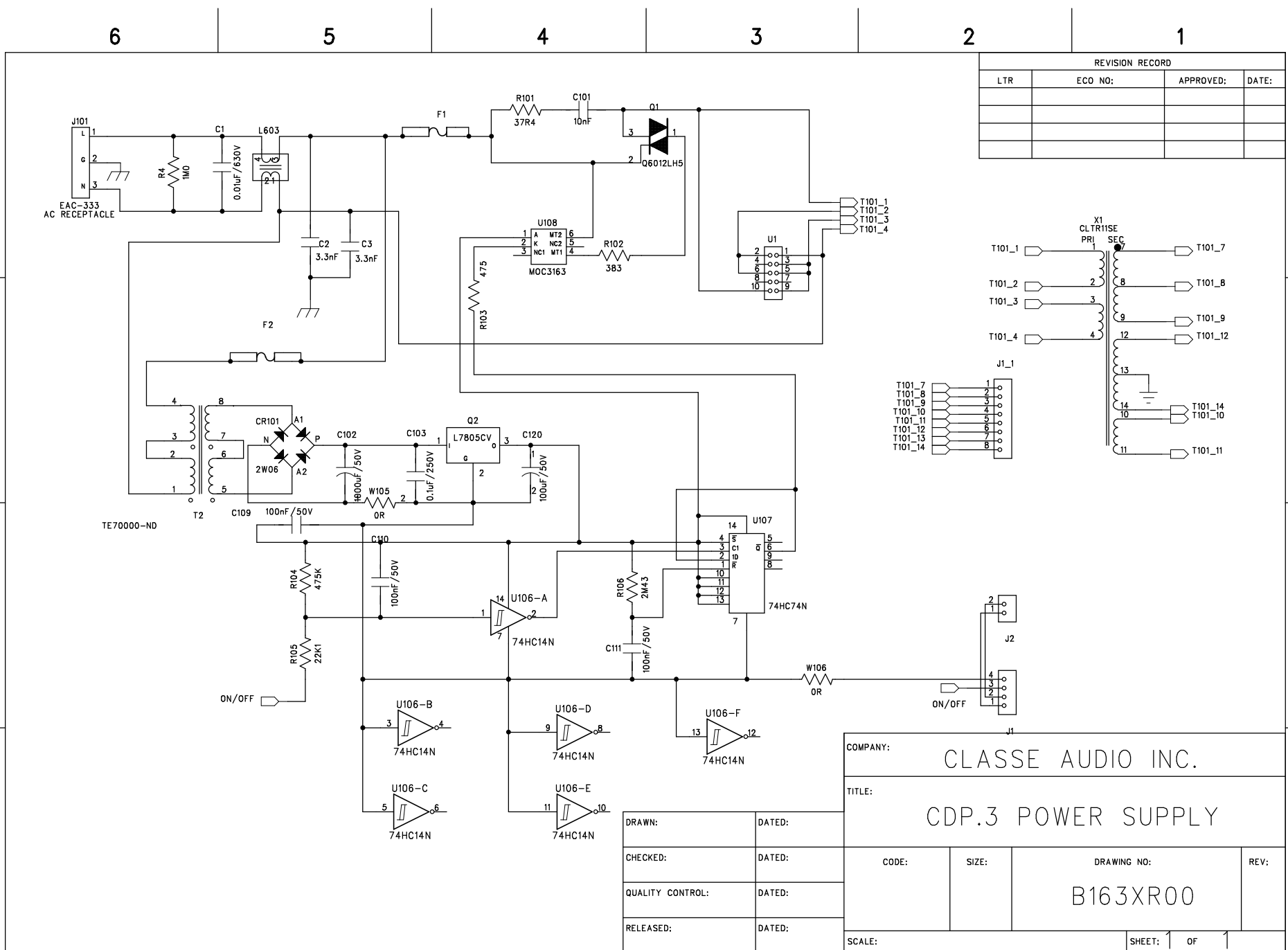


# OUTPUT - 79007001 (4)

CDP .3



REVISION RECORD			
LTR	ECO NO;	APPROVED;	DATE:



COMPANY:				CLASSE AUDIO INC.			
TITLE:				CDP.3 POWER SUPPLY			
CODE:	SIZE:	DRAWING NO:		REV:			
		B163XR00					
SCALE:				SHEET: 1 OF 1			

DRAWN:	DATED:
CHECKED:	DATED:
QUALITY CONTROL:	DATED:
RELEASED:	DATED:

D  
C  
B  
A

D  
C  
B  
A



# CLASSÉ AUDIO

## VOLTAGE CHANGE TO 220V CDP.3

- Disconnect unit completely
- Remove the top cover
- Remove the black wire from the fuse holder.
- Free the white wire from the tie wrap and connect where the black wire was connected at the fuse holder.
- Attach and secure the black wire where the white wire was.

NOTE: NO FUSE VALUE TO CHANGE, NO VARISTOR.

- Replace the top cover.
- Test the unit at the appropriate voltage for proper operation.

NEW VERSION

CDP-.3

