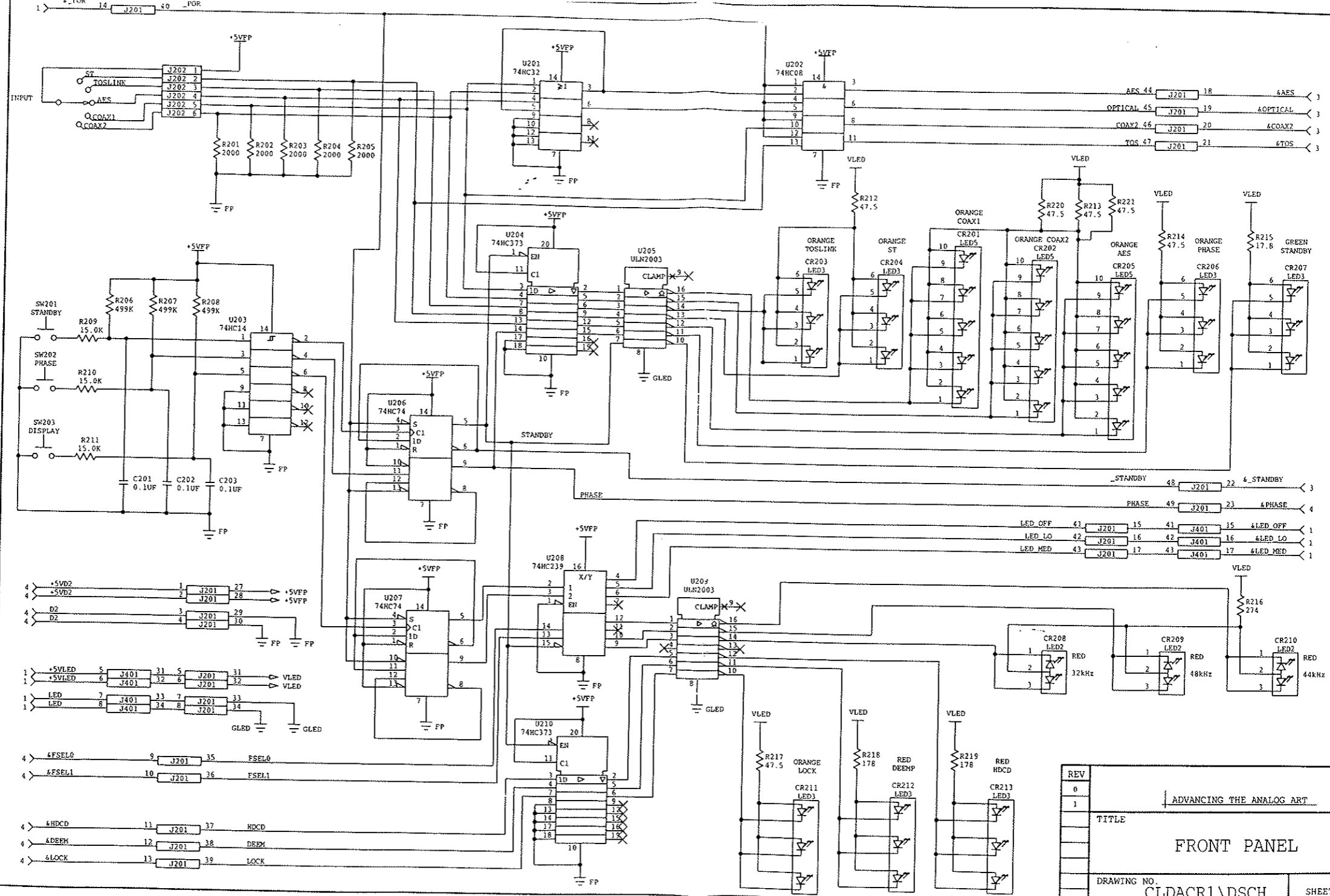
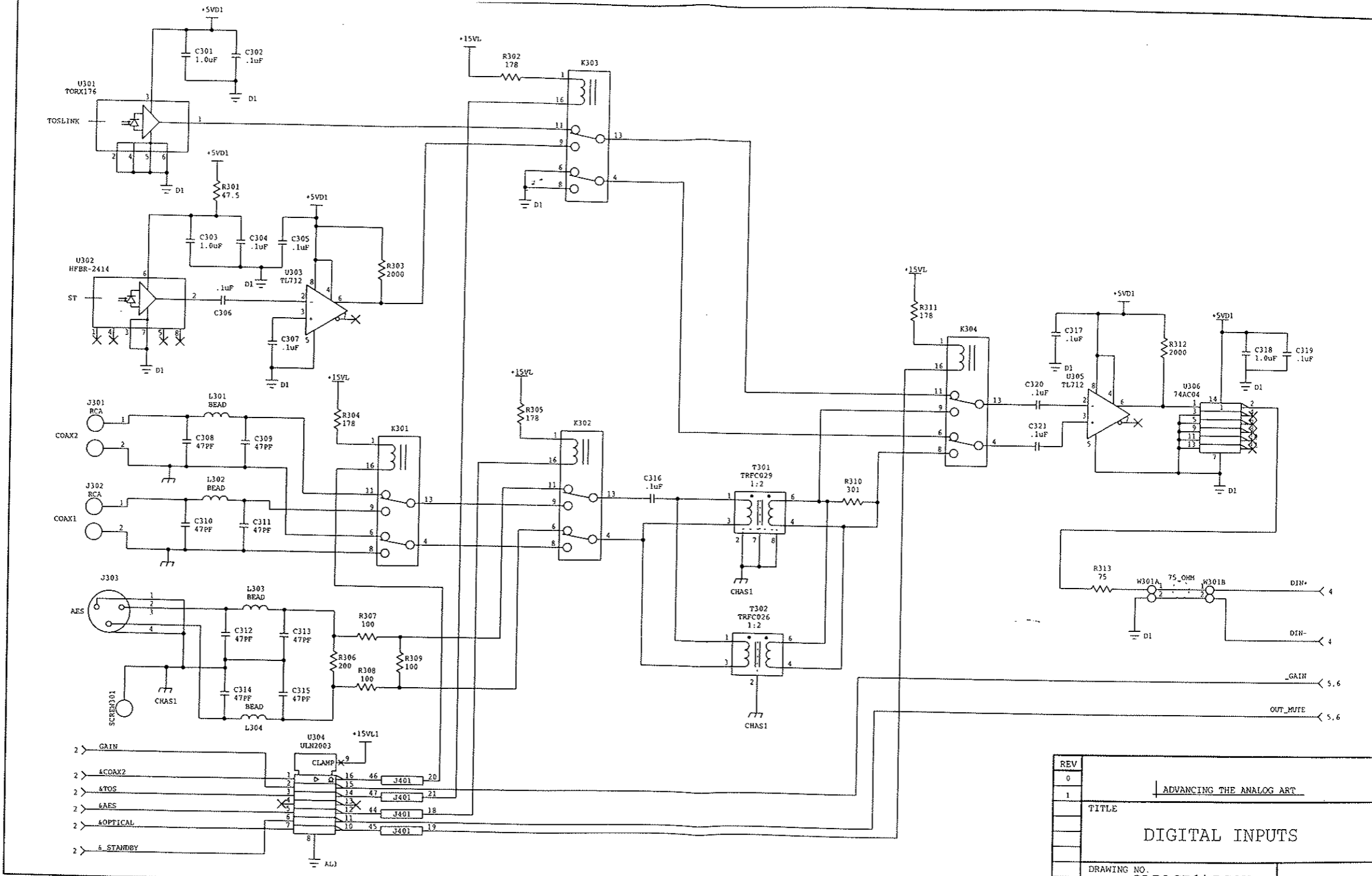


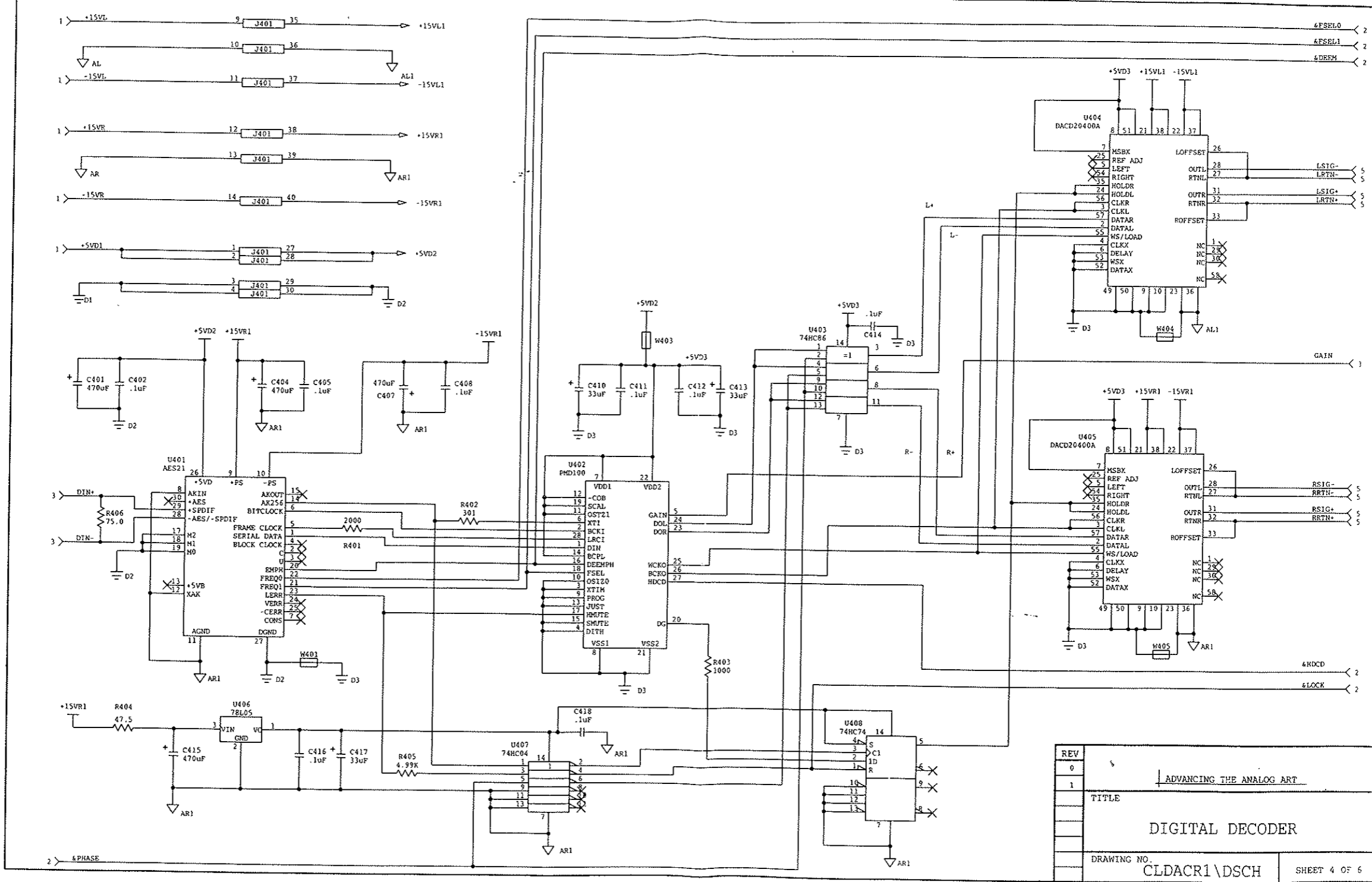
DATE	DRAWN	CHECKED	ECO NO.	REV	RELEASED:	USED ON
3/12/95	G. GOMES			0	<i>B. Gomes</i>	
5/4/95	G. GOMES			1		
ADVANCING THE ANALOG ART						
POWER SUPPLY						
DRAWING NO. CLDACR1\DSCH						SHEET 1 OF 6



REV	
0	ADVANCING THE ANALOG ART
1	
TITLE	
FRONT PANEL	
DRAWING NO. CLDACR1 \ DSCH	
SHEET 2 OF 6	



REV	0	
	1	ADVANCING THE ANALOG ART
TITLE	DIGITAL INPUTS	
DRAWING NO.	CLDACR1\DSCH	
	SHEET 3 OF 6	



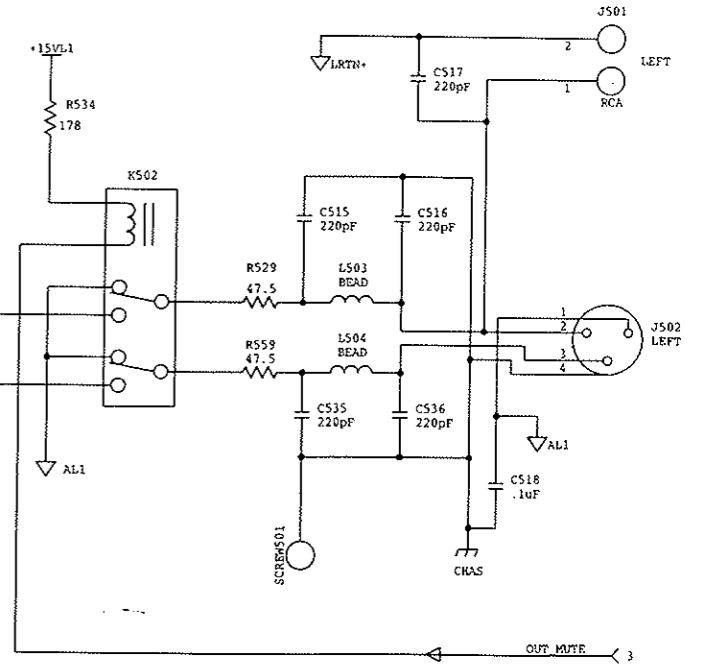
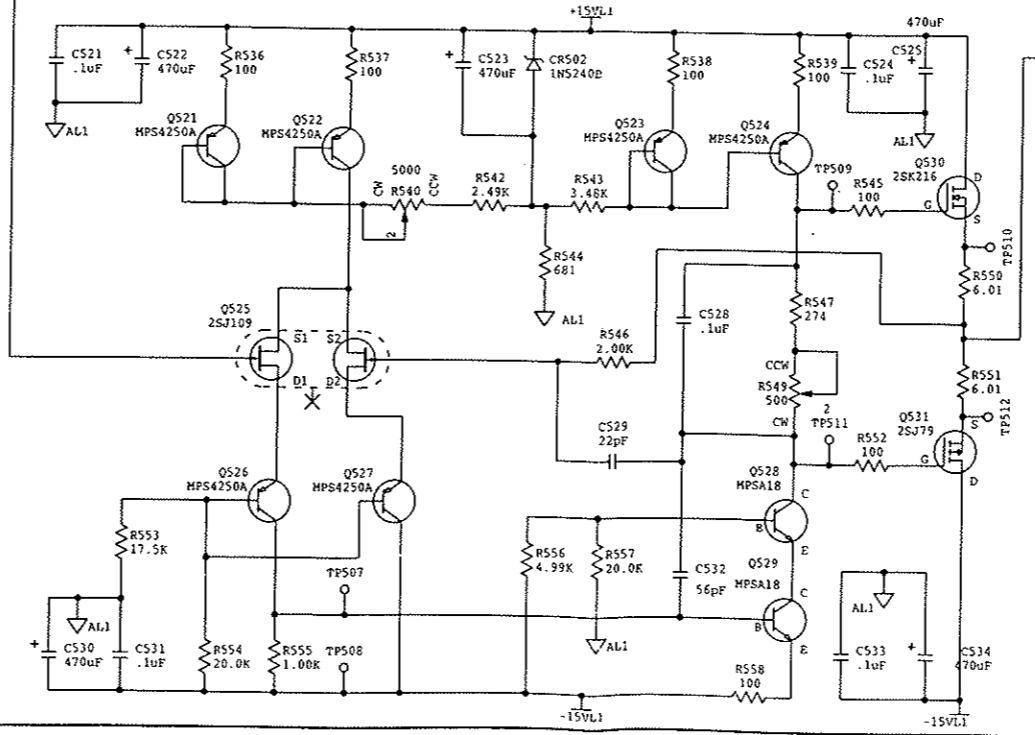
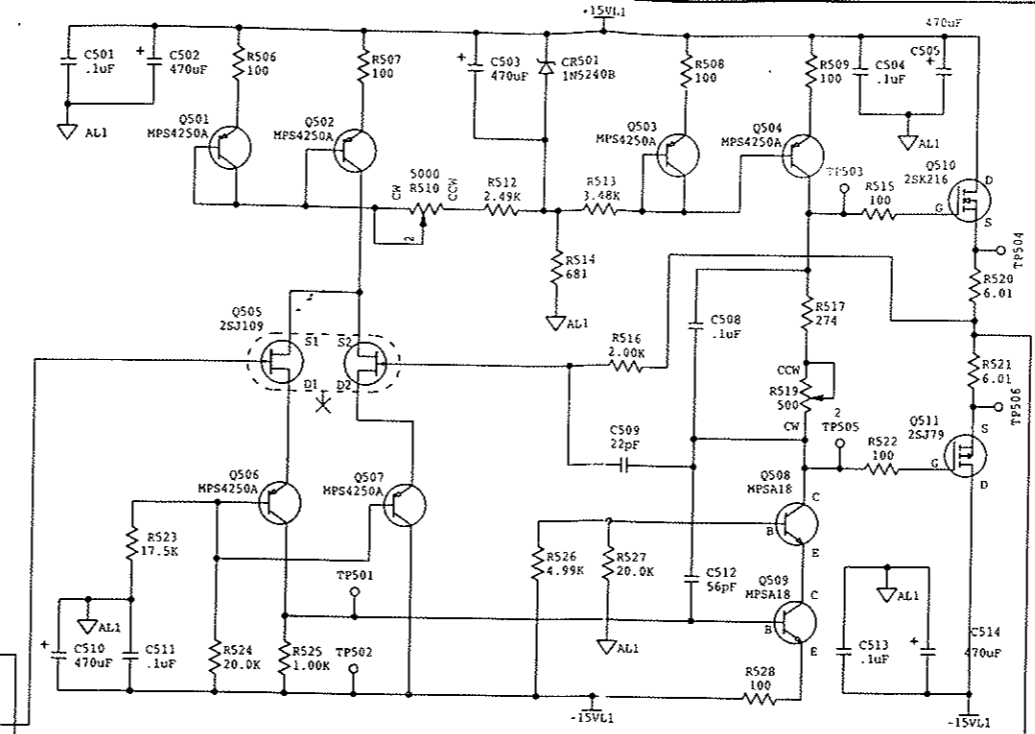
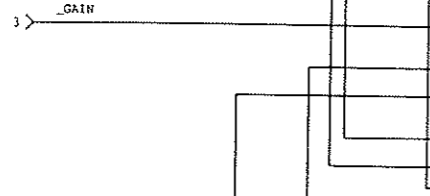
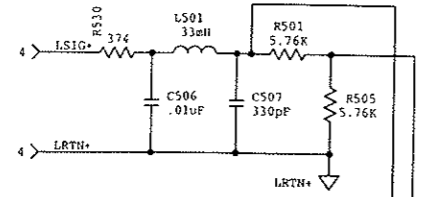
REV	DESCRIPTION
0	ADVANCING THE ANALOG ART
1	

TITLE

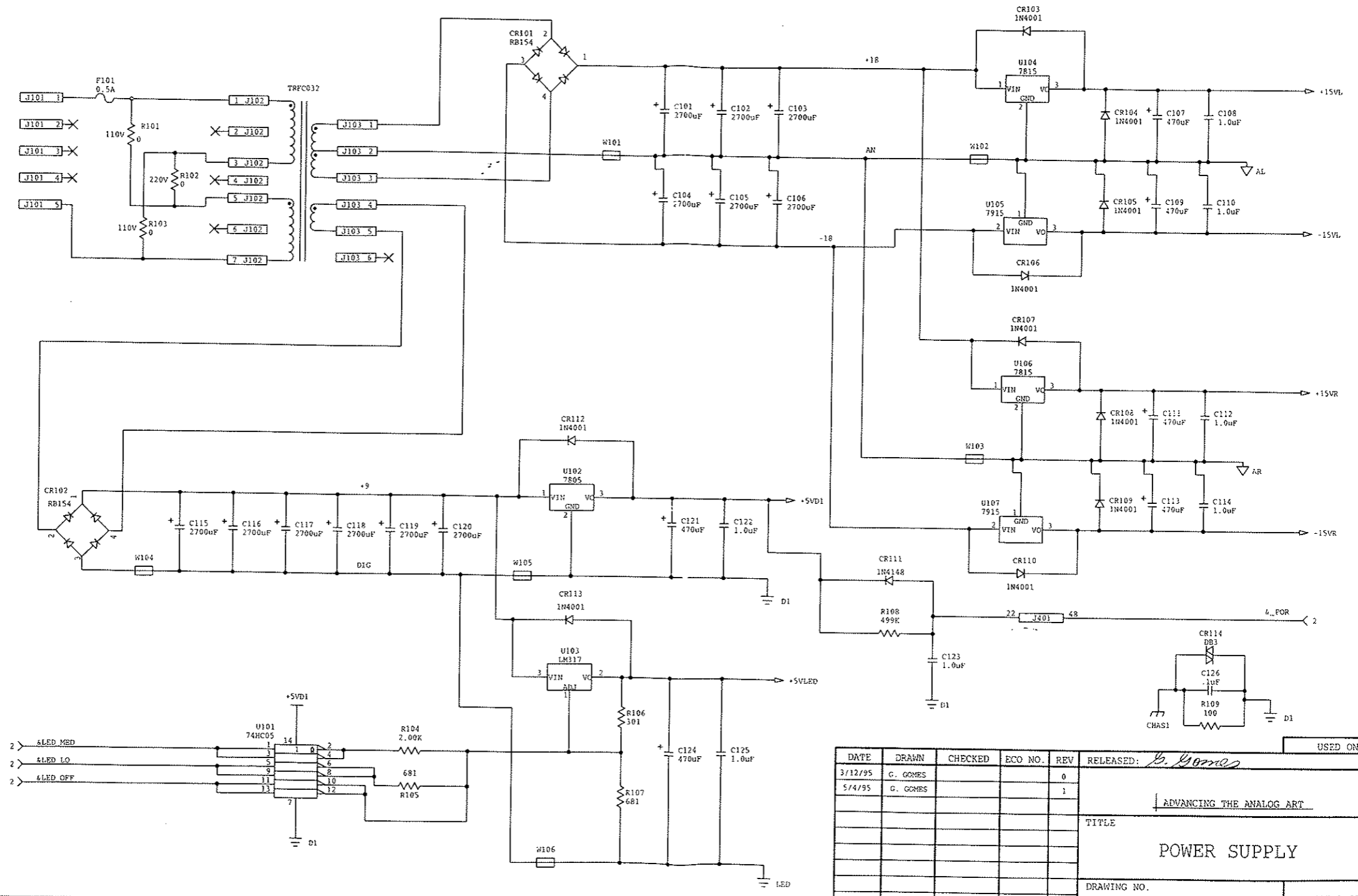
DIGITAL DECODER

DRAWING NO. CLDACR1\DSCH

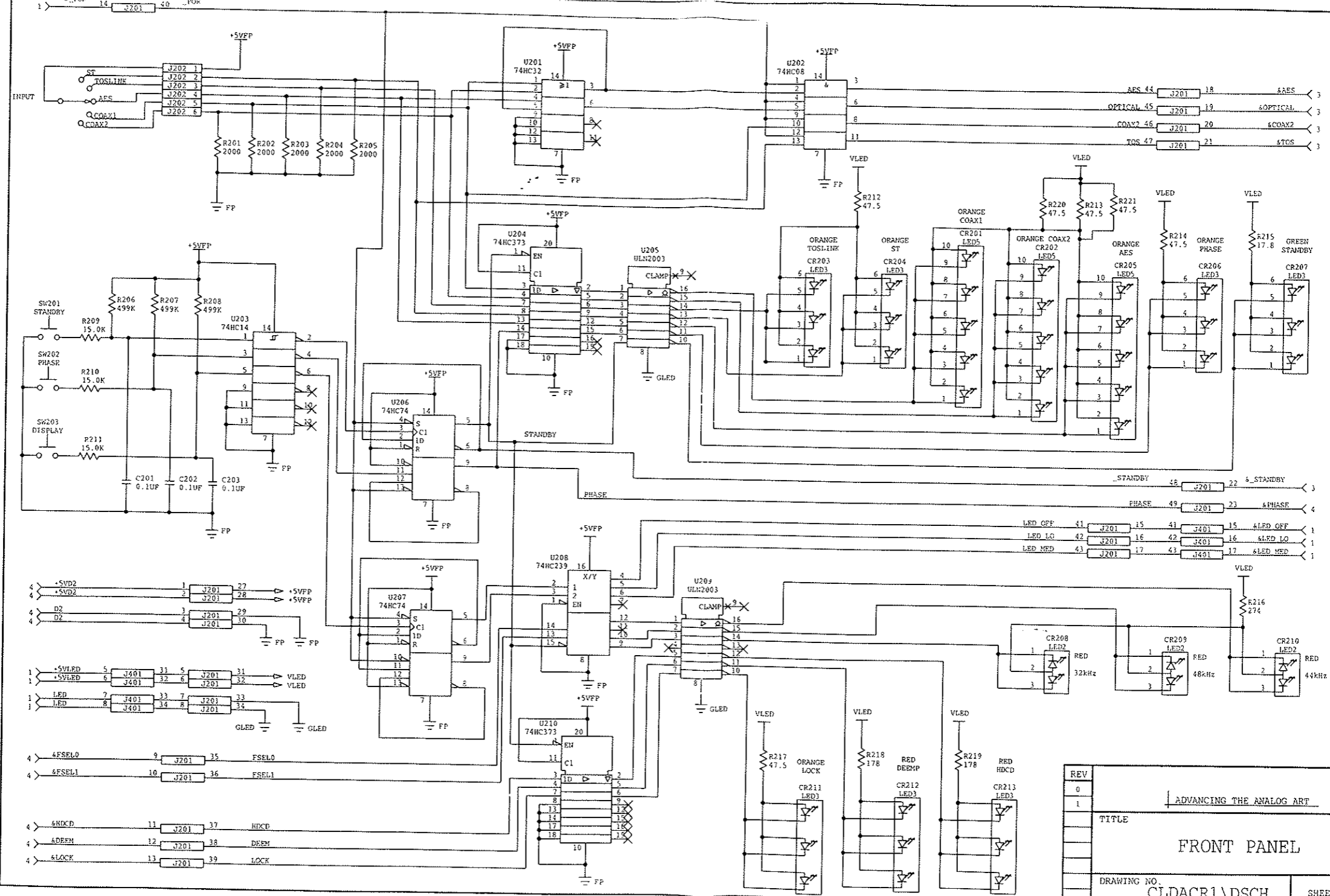
SHEET 4 OF 6



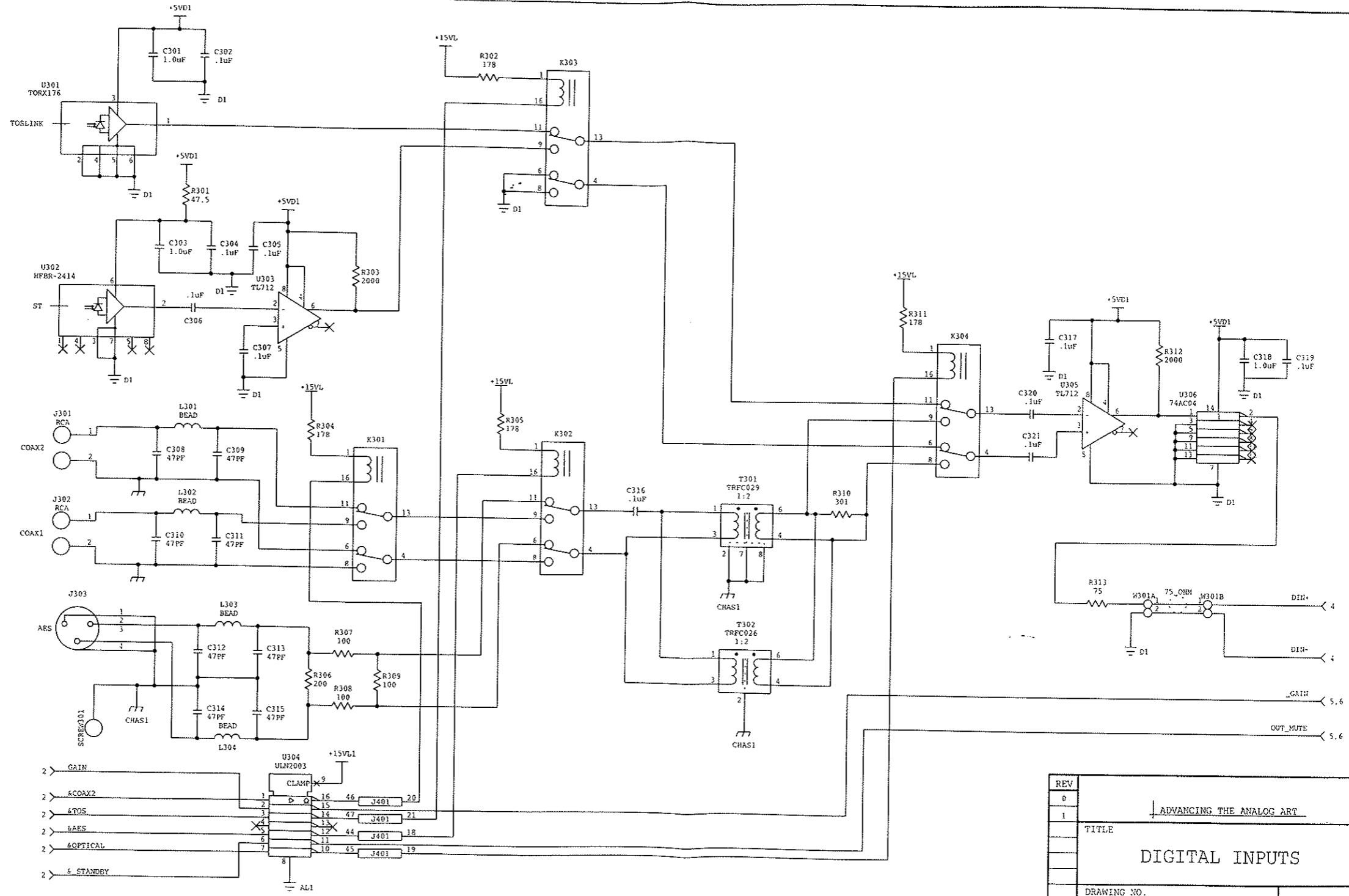
REV	
0	
1	ADVANCING THE ANALOG ART
TITLE	
LEFT ANALOG OUTPUT	
DRAWING NO. CLDACR1 \ DSCH	
SHEET 5 OF 6	



DATE	DRAWN	CHECKED	ECO NO.	REV	RELEASED: <i>G. Gomes</i>	USED ON
3/12/95	G. GOMES			0		
5/4/95	G. GOMES			1		
ADVANCING THE ANALOG ART						
POWER SUPPLY						
DRAWING NO. CLDACR1\DSCH						SHEET 1 OF 5

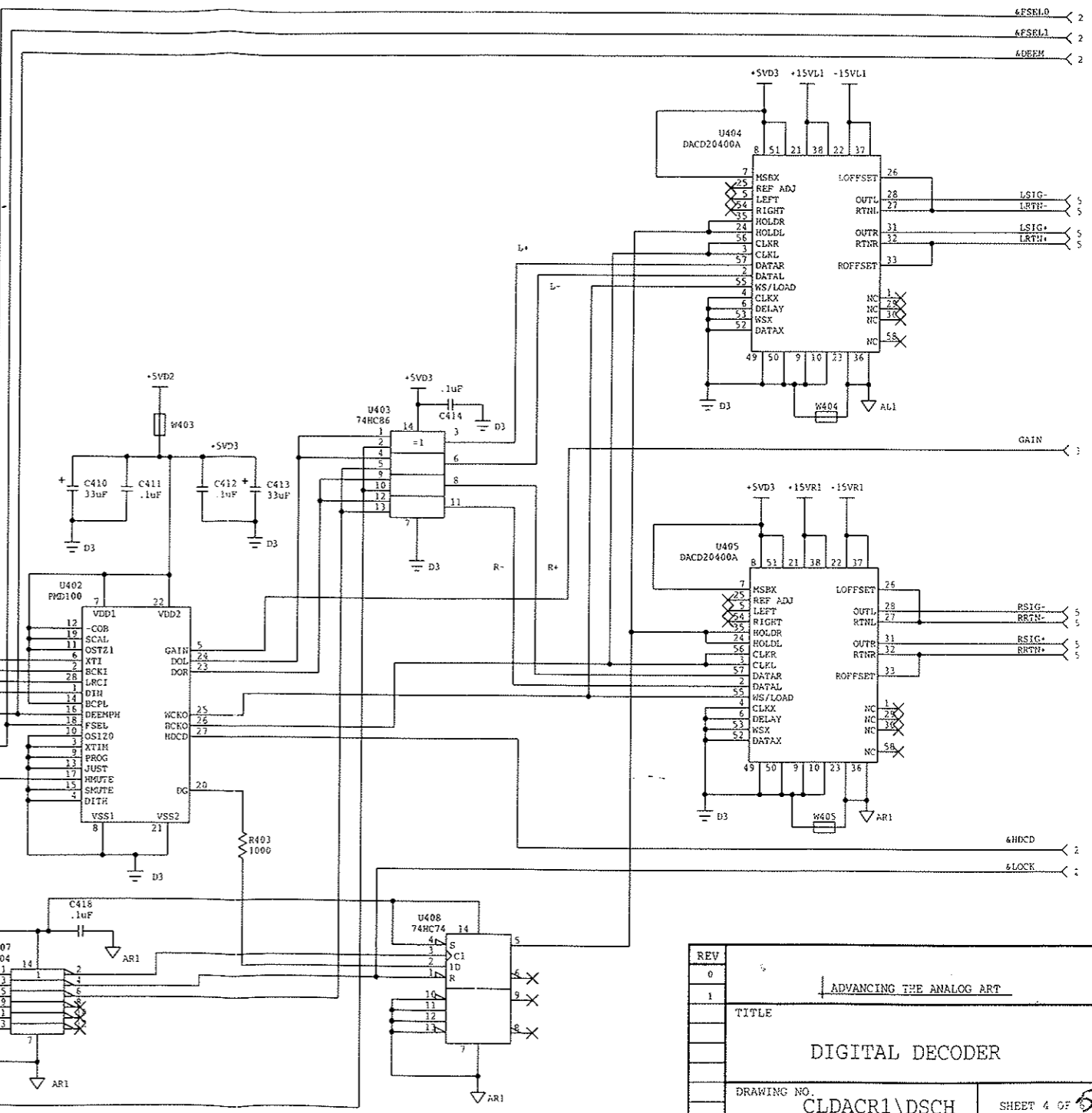
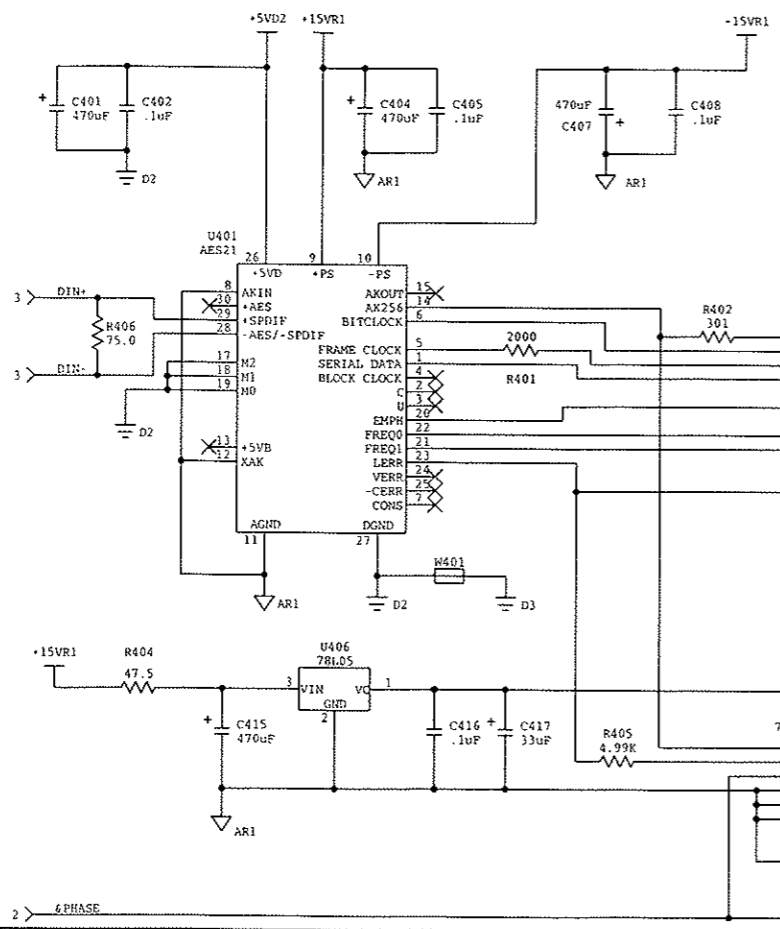
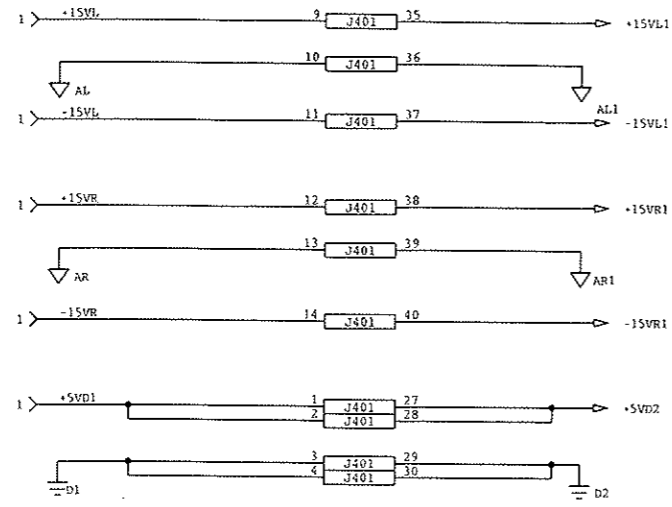


REV	0	
	1	ADVANCING THE ANALOG ART
TITLE		
FRONT PANEL		
DRAWING NO.		CLDACR1 \ DSCH
		SHEET 2 OF 5

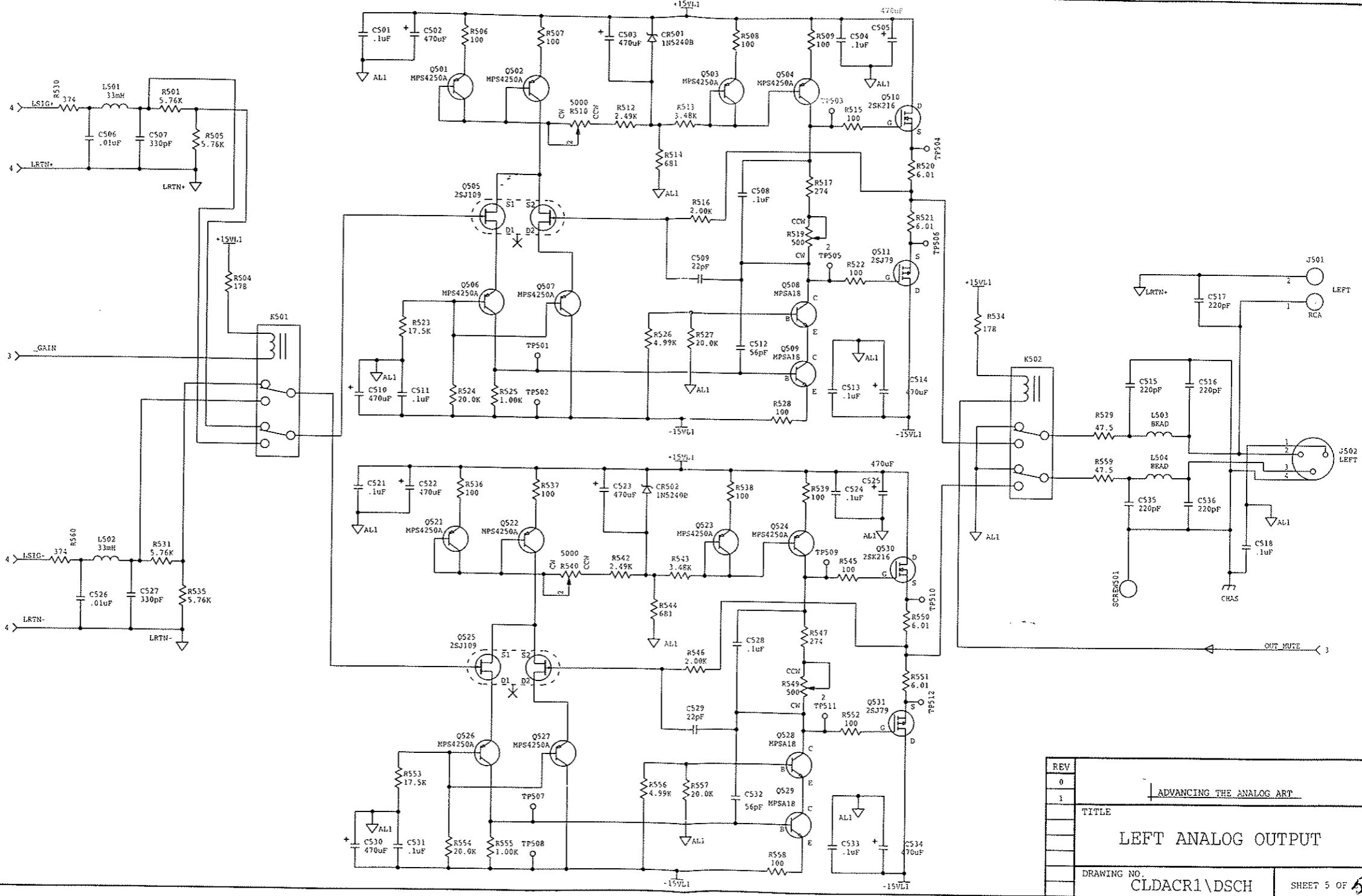


REV	
0	
1	ADVANCING THE ANALOG ART
TITLE	
DIGITAL INPUTS	
DRAWING NO.	
CLDACR1\DSCH	
SHEET 3 OF 5	





REV	0	ADVANCING THE ANALOG ART
	1	
TITLE		
DIGITAL DECODER		
DRAWING NO.		CLDACR1\DSCH
		SHEET 4 OF 5



REV	TITLE
0	ADVANCING THE ANALOG ART
1	LEFT ANALOG OUTPUT
	DRAWING NO. CLDACR1\DSCH
	SHEET 5 OF 5

## VOLTAGE CHANGE TO 220/240VAC FOR DAC-1

- 1- Disconnect unit from the AC line and system.
- 2- Remove the top cover; screws are located on each side of the unit.
- 3- Remove the power supply cover.
- 4- Locate resistor(s) R101, R102, and R103 at the right back side of the main board when facing the unit. (see fig. 1)
- 5- Remove resistors or jumpers R101 and R102.
- 6- Install a new jumper at position R103.
- 7- Replace power supply cover.
- 8- Replace the top cover
- 9- Test unit for proper operation.