

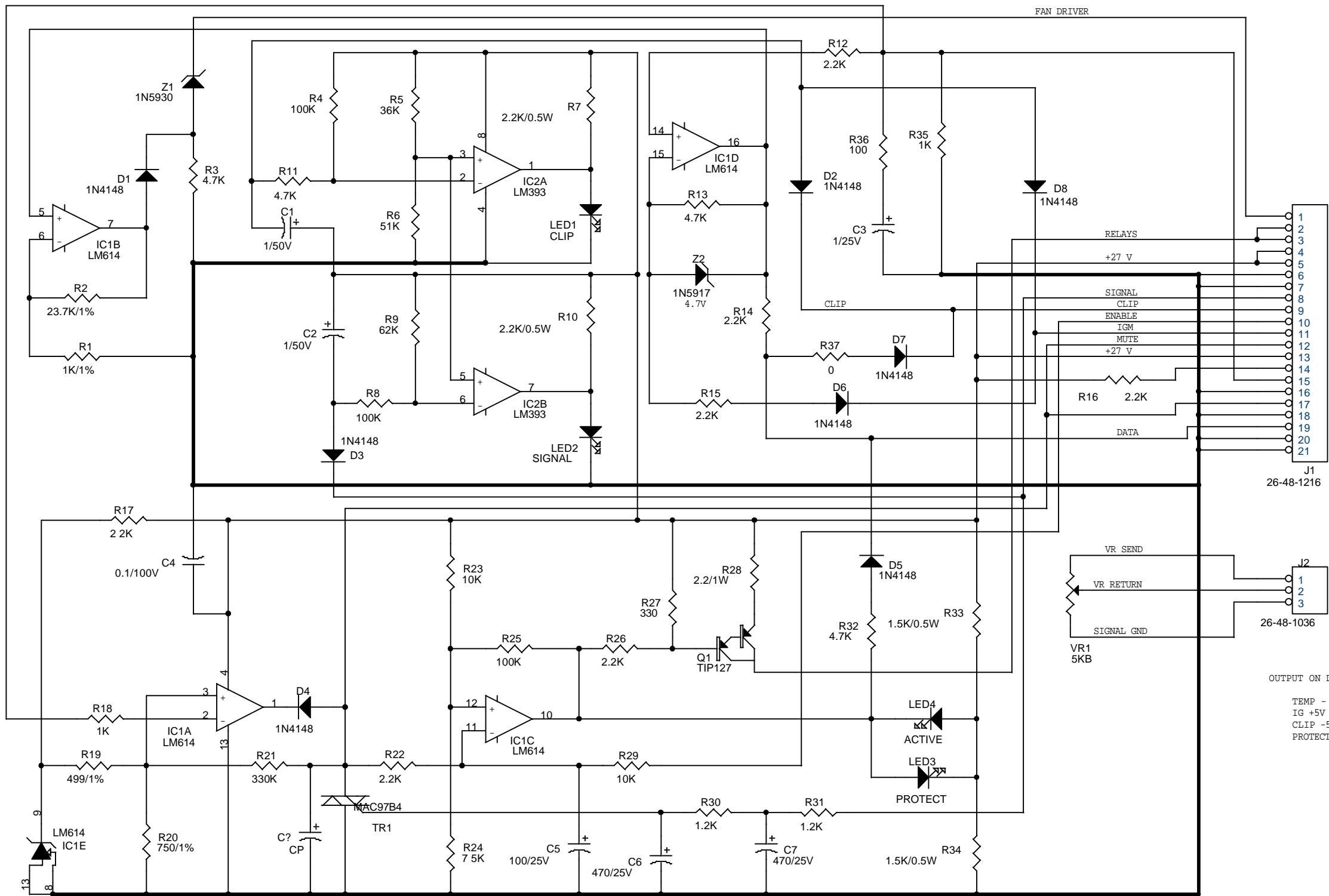


Schematic set

---

## 10001 Professional Series power amplifiers

1. Front display board
2. Octal board
3. Preamp
4. Fan driver
5. Power supply
6. Output module



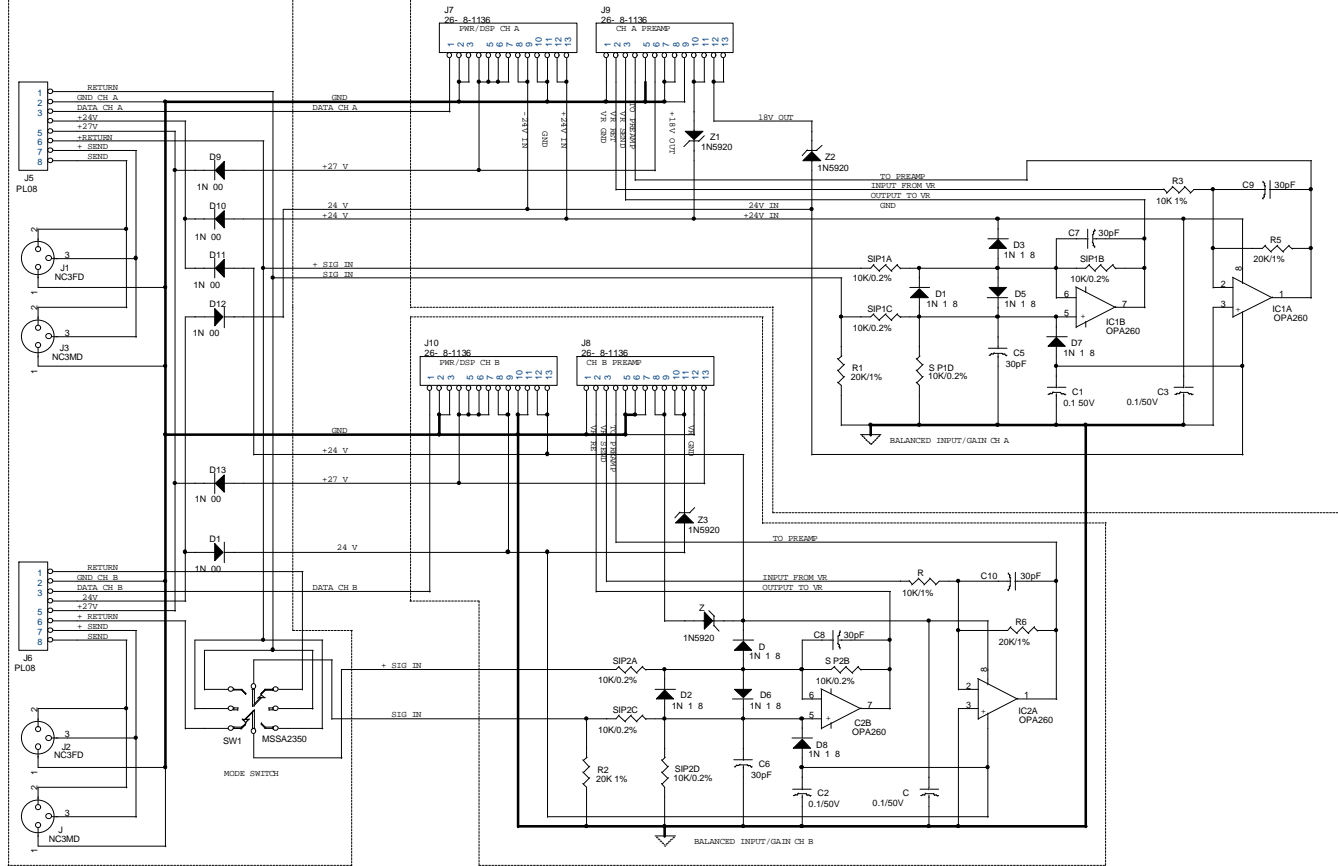
- FAN DRIVER
- 1 SPKR RELAY
  - 2 HIGH RAIL RELAY
  - 3 +27 V
  - 4 +27 V
  - 5 AUX GND
  - 6 AUX GND
  - 7 SIGNAL IN
  - 8 CLIP
  - 9 ENABLE RELAY
  - 10 IGM
  - 11 MUTE
  - 12 +27 V
  - 13 TEMP SENSOR POWER
  - 14 TEMP SENSOR OUTPUT
  - 15 TEMP SENSOR GND
  - 16 TRANS TEMP
  - 17 TRANS TEMP
  - 18 DATA
  - 19 AUX GND
  - 20 AUX GND
  - 21 AUX GND

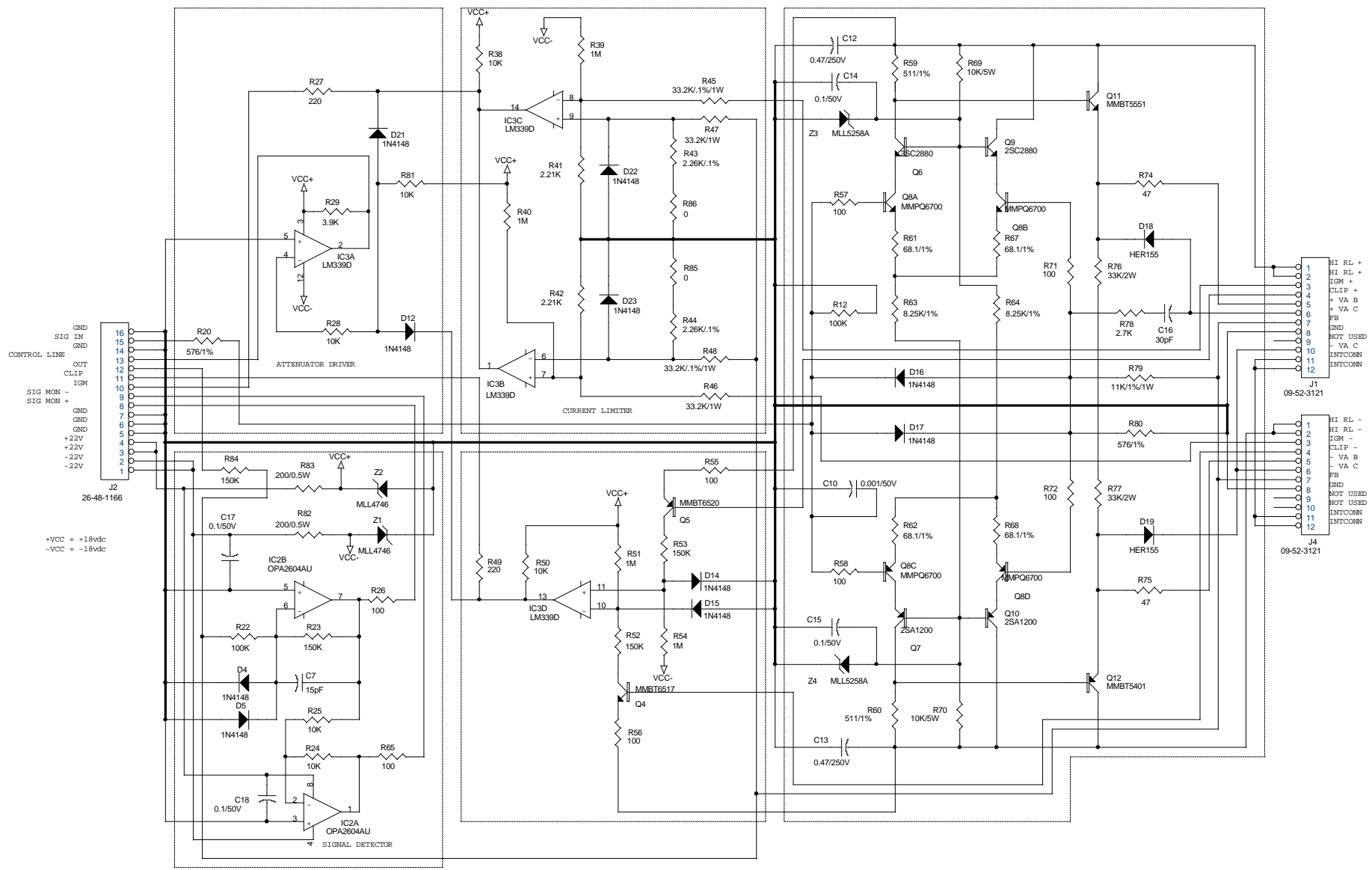
- J2
- 1 VR SEND
  - 2 VR RETURN
  - 3 SIGNAL GND

OUTPUT ON DATA LINE:

- TEMP - .25MV-1V
- IG +5V PULSE
- CLIP -5V PULSE
- PROTECT +10V

|   |                            |         |
|---|----------------------------|---------|
| CREST AUDIO                               |                            |         |
| 100 EISENHOWER DRIVE<br>PARAMUS, NJ 07652 |                            |         |
| Title<br>10001 DISPLAY PCB                |                            |         |
| Size<br>B                                 | Document Number<br>21B1528 | Rev     |
| Date:<br>Tuesday, September 12, 2000      | Sheet<br>1                 | of<br>1 |

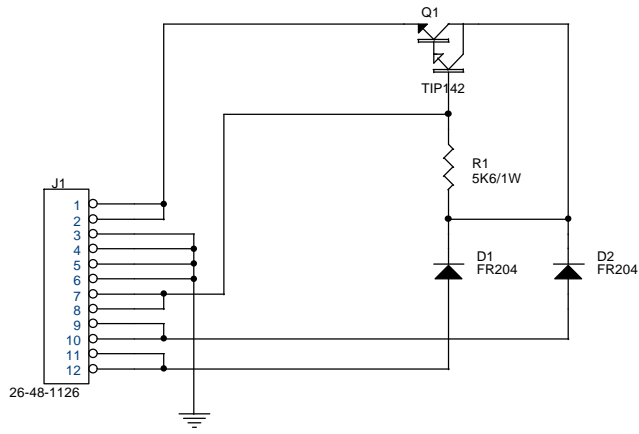




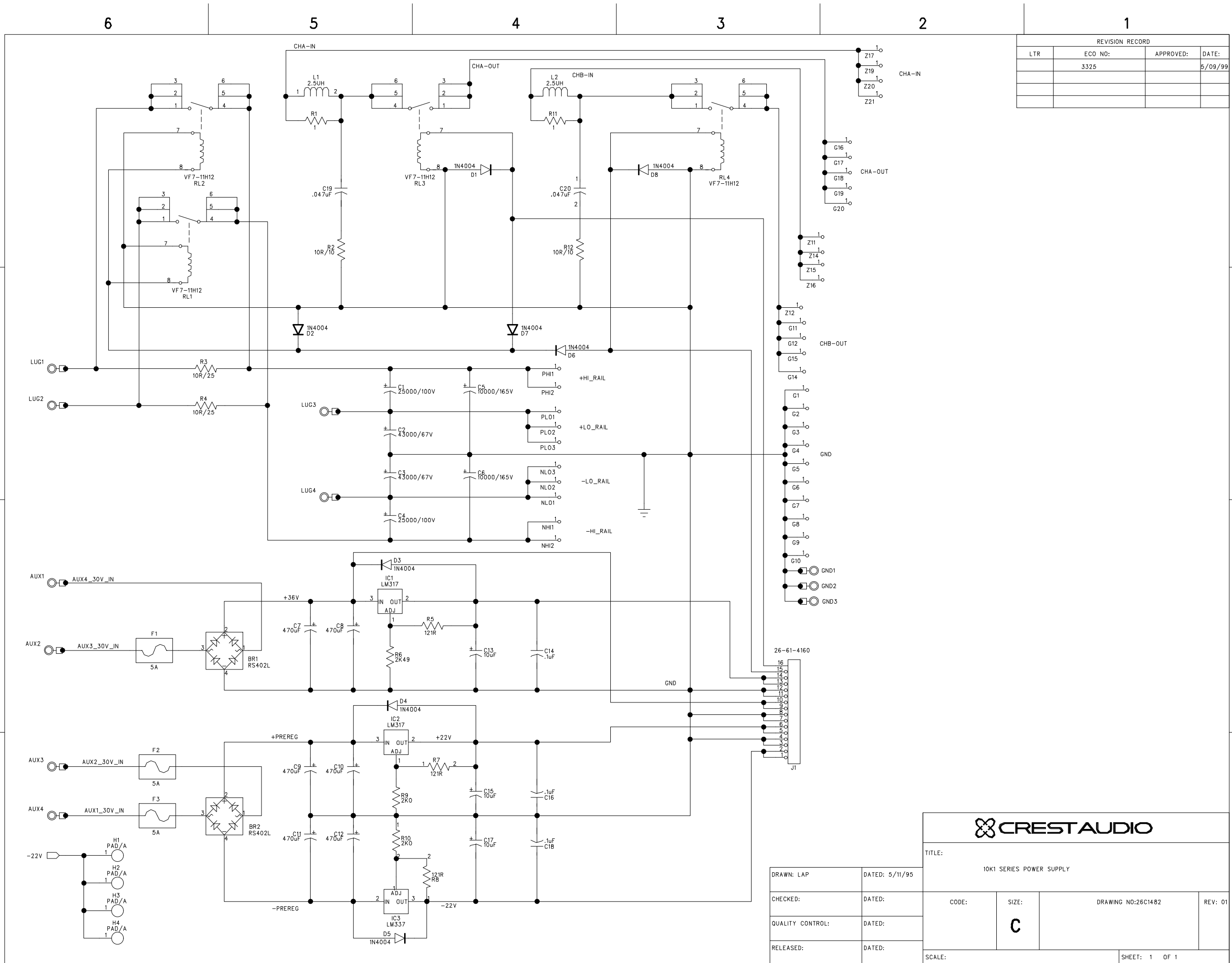
R84, R85 USED REV -04  
 D11 NOT USED TILL REV 07

01-25-94 CHANGED R29 FROM 2.2K TO 3.9K  
 5/7/96 UPDATED SCHEMATIC I.F.  
 CHANGED Q6, Q9 FROM MMBT5551 TO 2SC2880  
 CHANGED Q7, Q10 FROM MMBT5401 TO 2SA1200  
 CHANGED Q4 FROM MMBT5551 TO MMBT6517  
 CHANGED Q5 FROM MMBT5401 TO MMBT6520

|   |                      |              |
|---|----------------------|--------------|
| CREST AUDIO                               |                      |              |
| 100 EISENHOWER DRIVE<br>PARAMUS, NJ 07652 |                      |              |
| Title 10001 PREAMP                        |                      |              |
| Size C                                    | Document Number      | Rev          |
| Date                                      | Monday, May 15, 2000 | Sheet 0 of 0 |



|   |                       |                  |
|---|-----------------------|------------------|
| CREST AUDIO                               |                       |                  |
| 100 EISENHOWER DRIVE<br>PARAMUS, NJ 07652 |                       |                  |
| Title                                     |                       | 1000X FAN DRIVER |
| Size                                      | Document Number       | Rev              |
| A   | 21A1749               |                  |
| Date:                                     | Tuesday, May 16, 2000 | Sheet 0 of 0     |



| REVISION RECORD |         |           |         |
|-----------------|---------|-----------|---------|
| LTR             | ECO NO: | APPROVED: | DATE:   |
|                 | 3325    |           | 5/09/99 |
|                 |         |           |         |
|                 |         |           |         |



|                                    |                   |                    |         |
|------------------------------------|-------------------|--------------------|---------|
| TITLE:<br>10K1 SERIES POWER SUPPLY |                   |                    |         |
| CODE:                              | SIZE:<br><b>C</b> | DRAWING NO:26C1482 | REV: 01 |
| SCALE:                             |                   | SHEET: 1 OF 1      |         |

|                  |                |
|------------------|----------------|
| DRAWN: LAP       | DATED: 5/11/95 |
| CHECKED:         | DATED:         |
| QUALITY CONTROL: | DATED:         |
| RELEASED:        | DATED:         |

