



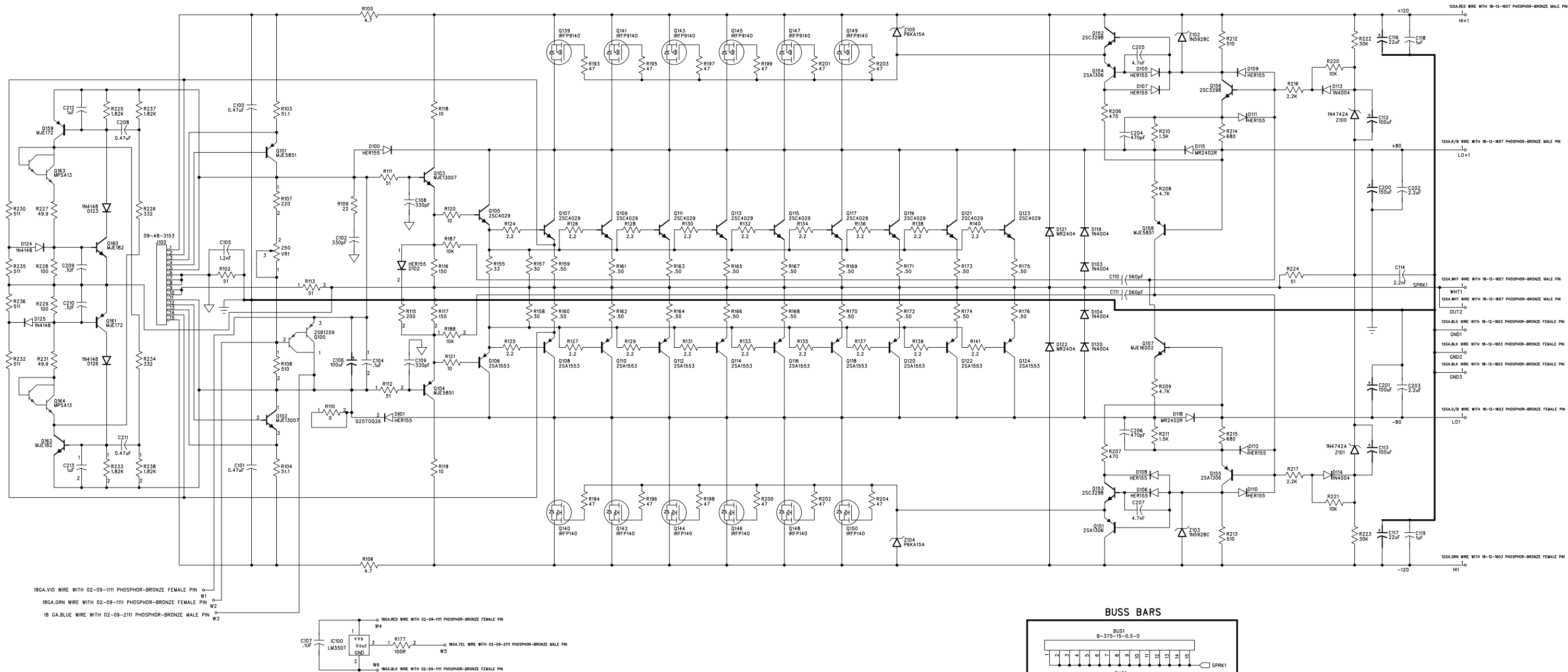
Schematic set

Pro Series 9001 power amplifiers

May 2000 (current production)

1. New Output module (1996 +)
2. New Preamp (1996 +)
3. New Power supply cap board
4. New Power supply auxiliary board
5. Early Power supply
6. Inrush board rev 3
7. Inrush board rev 4
8. Zobel board
9. Harness adaptor

REVISION RECORD			
LTR	ECO NO:	APPROVED:	DATE:

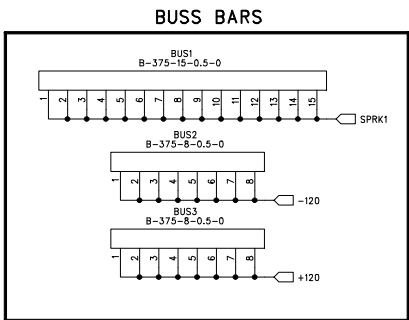


REV. NOTES

- ```

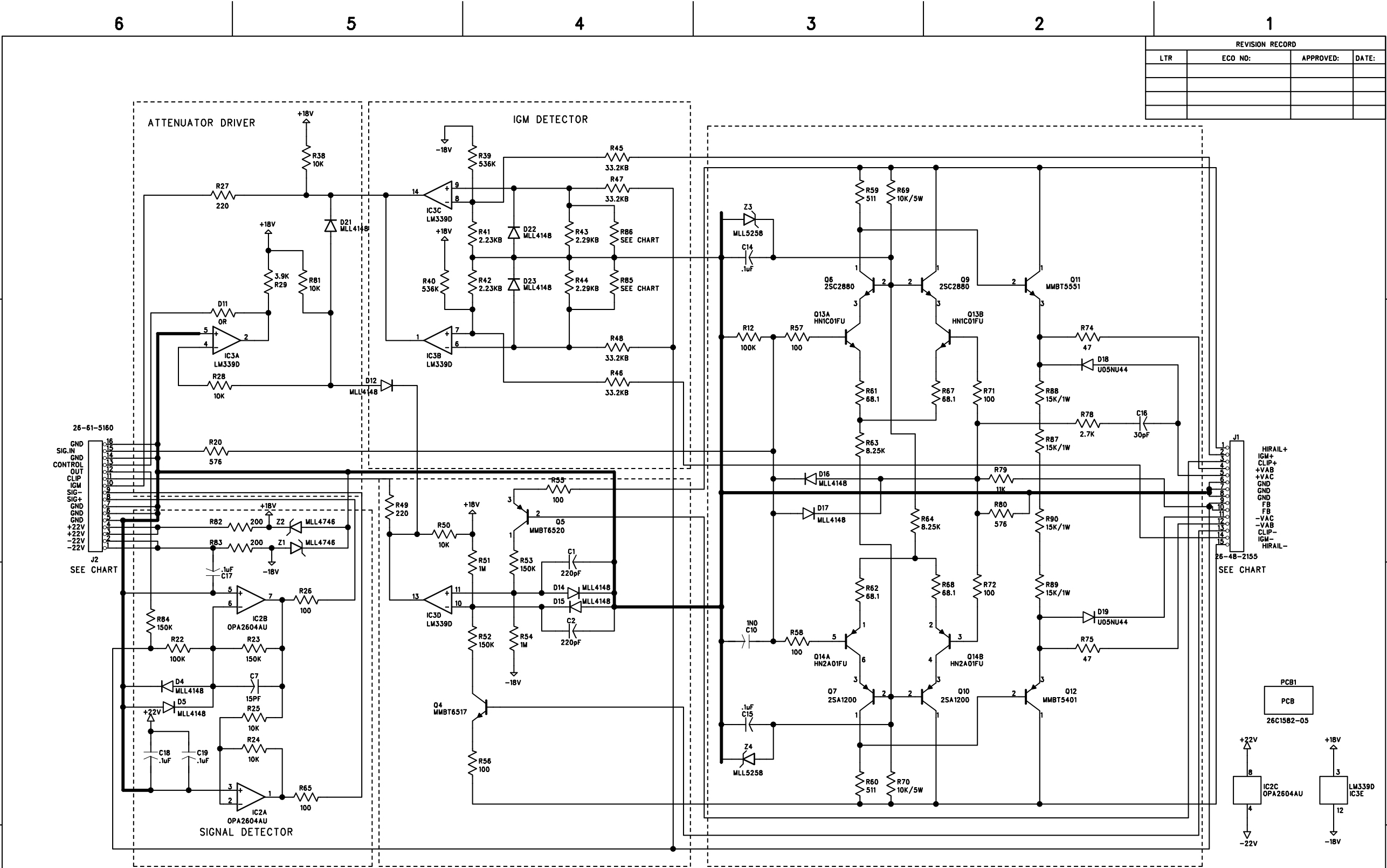
1. 9/9/94 ADDED D119, D120
2. 9/9/94 CHANGED D103, D104 TO 1N4004
3. 9/9/94 CHANGED R224 TO 51R/1W M.O.
4. 9/9/94 ADDED D121, D122 DIODES INC. 6A4
5. 9/9/94 CHANGED R159 THRU R172 FROM 5 WATT TO 7 WATT
6. 11/21/94 CORRECTED D121, D122 TO MR2404
7. 11/21/94 CORRECTED POLARITY OF Z104, Z105
8. 12/12/94 ADDED CAPS AND DIODES TO JED CIRCUIT
9. 12/15/94 CHANGED ALL 0.33/7W RESISTORS TO 0.5/7W RESISTORS
10. 12/15/94 CHANGED R214, R215 FROM 1.5K/2W TO 680R/2W
11. 12/15/94 CHANGED R210, R211 FROM 1K/2W TO 1.5K/2W
12. 1/12/95 REVISE JED CKT VALUES
13. 2/2/95 REVISE JED CKT AND ADDED C212, C213 1uF/63V
14. 3/20/95 ADDED D129, D130 1N4148
15. 5/9/00 UPDATED DRAWING TO CURRENT REVISION LEVEL

```



TITLE: 9001 OUTPUT MODULE

|                  |  |        |  |                    |  |  |  |       |  |       |  |             |  |      |  |
|------------------|--|--------|--|--------------------|--|--|--|-------|--|-------|--|-------------|--|------|--|
| DRAWN:           |  | DATED: |  | 9001 OUTPUT MODULE |  |  |  |       |  |       |  |             |  |      |  |
| CHECKED:         |  | DATED: |  |                    |  |  |  | CODE: |  | SIZE: |  | DRAWING NO: |  | REV: |  |
| QUALITY CONTROL: |  | DATED: |  |                    |  |  |  |       |  |       |  |             |  |      |  |
| RELEASED:        |  | DATED: |  |                    |  |  |  |       |  |       |  |             |  |      |  |
| SCALE:           |  |        |  | SHEET:      OF     |  |  |  |       |  |       |  |             |  |      |  |



NOTES

- REF DES OF PARTS CHANGED FOR CLAIR BROTHERS  
R20 AND R80
- ADDED D11
- REPLACED D11 WITH 0 OHM JUMPER
- 5/9/00 DRAWING BROUGHT UP TO CURRENT LEVEL



TITLE: 9001 PREAMP

|                  |             |
|------------------|-------------|
| DRAWN: LAP       | DATED: 1/96 |
| CHECKED:         | DATED:      |
| QUALITY CONTROL: | DATED:      |
| RELEASED:        | DATED:      |

|        |               |             |         |
|--------|---------------|-------------|---------|
| CODE:  | SIZE: C       | DRAWING NO: | REV: 04 |
| SCALE: | SHEET: 1 OF 1 |             |         |

6

5

4

3

2

1

D

C

B

A

D

C

B

A

| REVISION RECORD |         |           |       |
|-----------------|---------|-----------|-------|
| LTR             | ECO NO: | APPROVED: | DATE: |
|                 |         |           |       |
|                 |         |           |       |
|                 |         |           |       |
|                 |         |           |       |

12GA.BLK 8.5" WIRE WITH 18-12-1607 PHOSPHOR-BRONZE M. PIN  
FROM CAP BOARD TO OUTPUT MODULE CHA

12GA.BLK 18" WIRE WITH 18-12-1607 PHOSPHOR-BRONZE M. PIN  
FROM CAP BOARD TO OUTPUT MODULE CHB

12GA. BLK 6.5" WIRE WITH #10 12-10GA. RINGLUG  
FROM CAP PCB TO ZOBEL PCB

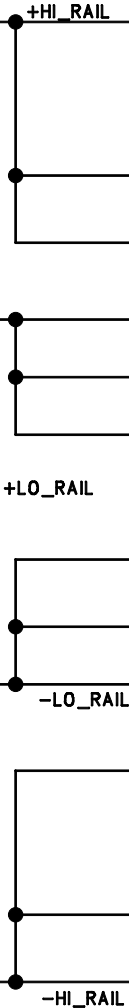
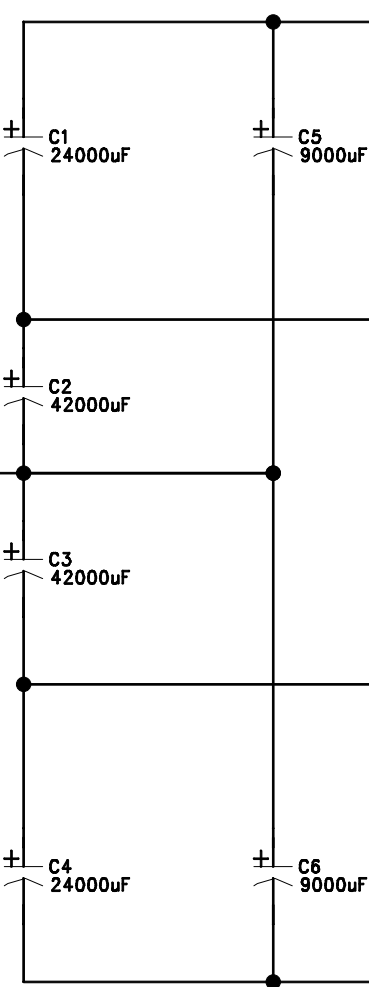
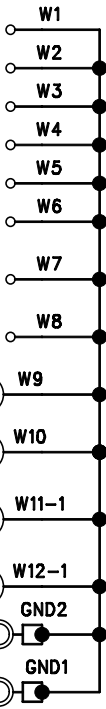
12GA. BLK 6.5" WIRE WITH #10 12-10GA. RINGLUG  
FROM CAP PCB TO ZOBEL PCB

12GA. BLK 3.5" WIRE WITH PUSH-ON LUG  
FROM CAP PCB TO AUX. PCB

12GA. BLK 3.5" WIRE WITH PUSH-ON LUG  
FROM CAP PCB TO AUX. PCB

FROM TRANSFORMER CENTER TAP TO CAP PCB

FROM TRANSFORMER CENTER TAP TO CAP PCB.



W13-1 12GA. RED 3.5" WIRE WITH PUSH-ON LUG  
FROM CAP PCB TO RECTIFIER

W25 16GA. RED 2.5" WIRE WITH PUSH-ON LUG  
FROM W13-1 WIRE TO RECTIFIER

W14 12GA.RED 17" WIRE WITH 18-12-1603 PHOSPHOR-BRONZE F. PIN  
FROM CAP BOARD TO OUTPUT MODULE CHB

W15 12GA.RED 10" WIRE WITH 18-12-1603 PHOSPHOR-BRONZE F. PIN  
FROM CAP BOARD TO OUTPUT MODULE CHA

W16-1 12GA. R/B 3.5" WIRE WITH PUSH-ON LUG  
FROM CAP PCB TO RECTIFIER

W17 12GA.R/B 10" WIRE WITH 18-12-1603 PHOSPHOR-BRONZE F. PIN  
FROM CAP BOARD TO OUTPUT MODULE CHA

W18 12GA.R/B 18" WIRE WITH 18-12-1603 PHOSPHOR-BRONZE F. PIN  
FROM CAP BOARD TO OUTPUT MODULE CHB

W19-1 12GA. G/B 3.5" WIRE WITH PUSH-ON LUG  
FROM CAP PCB TO RECTIFIER

W20 12GA.G/B 10" WIRE WITH 18-12-1607 PHOSPHOR-BRONZE M. PIN  
FROM CAP BOARD TO OUTPUT MODULE CHA

W21 12GA.G/B 18" WIRE WITH 18-12-1607 PHOSPHOR-BRONZE M. PIN  
FROM CAP BOARD TO OUTPUT MODULE CHB

W22-1 12GA. GRN 3.5" WIRE WITH PUSH-ON LUG  
FROM CAP PCB TO RECTIFIER

W26 16GA. GRN 2.5" WIRE WITH PUSH-ON LUG  
FROM W22-1 TO RECTIFIER

W23 12GA.GRN 9" WIRE WITH 18-12-1607 PHOSPHOR-BRONZE M. PIN  
FROM CAP BOARD TO OUTPUT MODULE CHA

W24 12GA.GRN 16" WIRE WITH 18-12-1607 PHOSPHOR-BRONZE M. PIN  
FROM CAP BOARD TO OUTPUT MODULE CHB

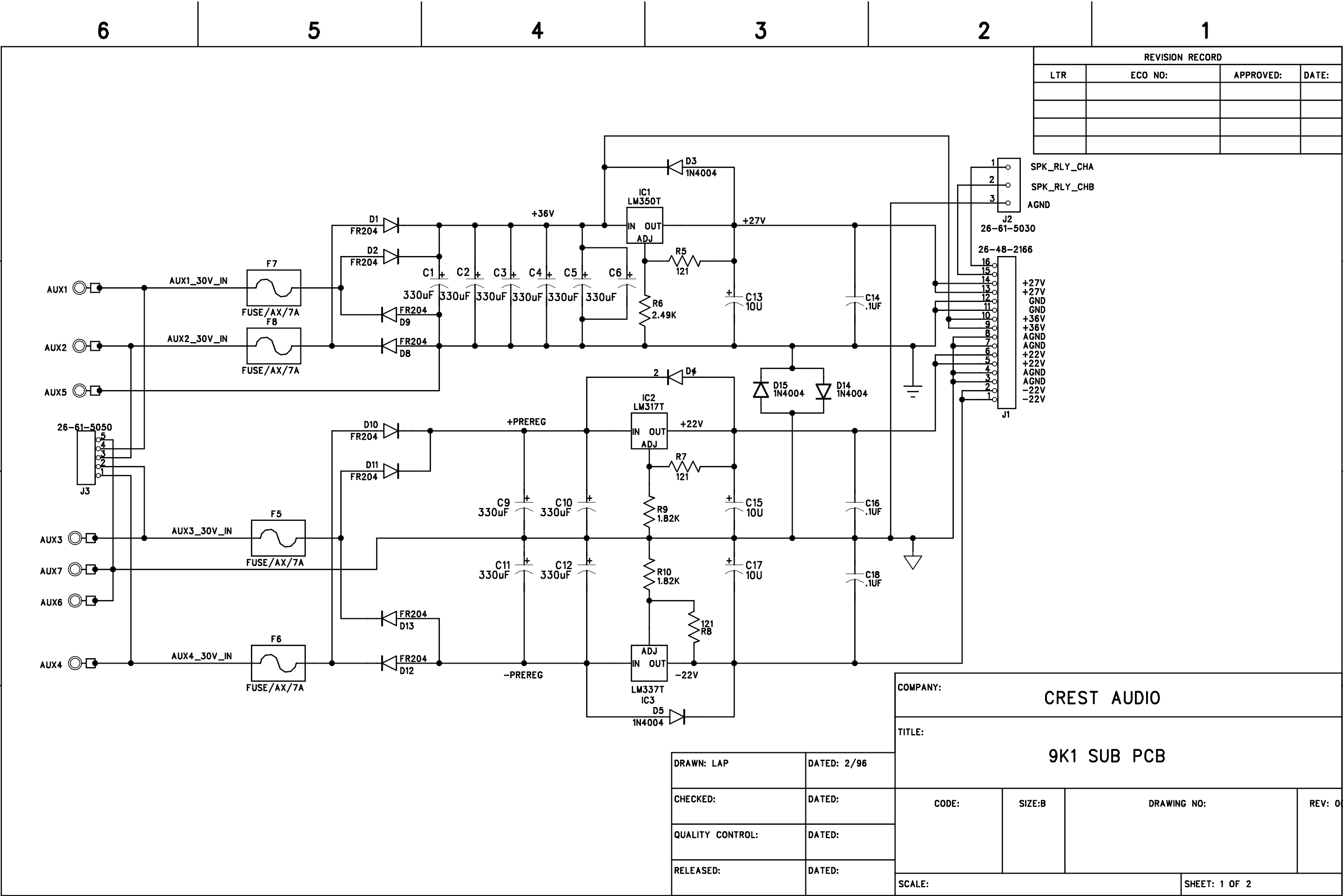
PCB1  
PCB

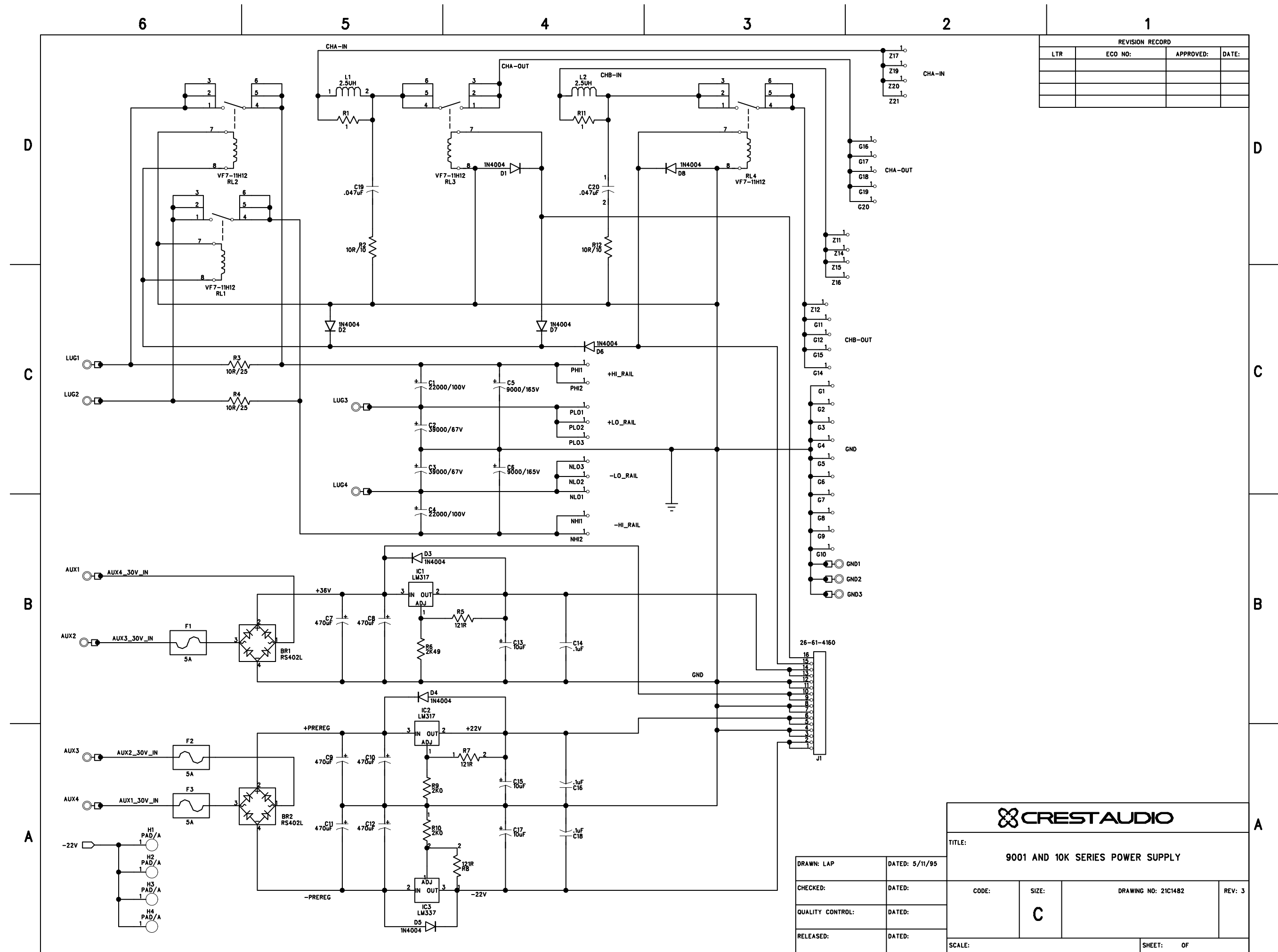
CON1  
CONNECTOR  
03-12-1062

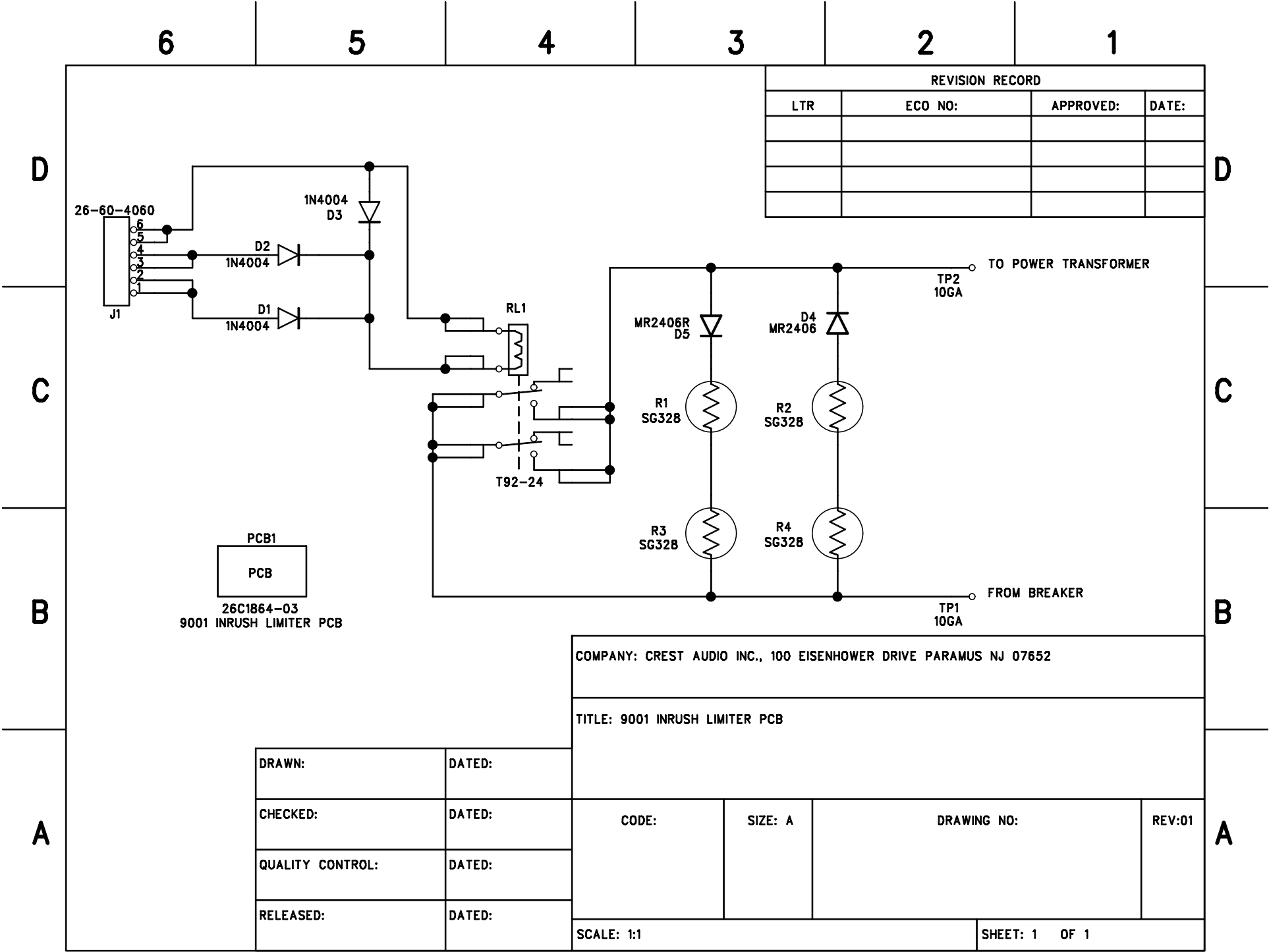
CON2  
CONNECTOR  
03-12-1062

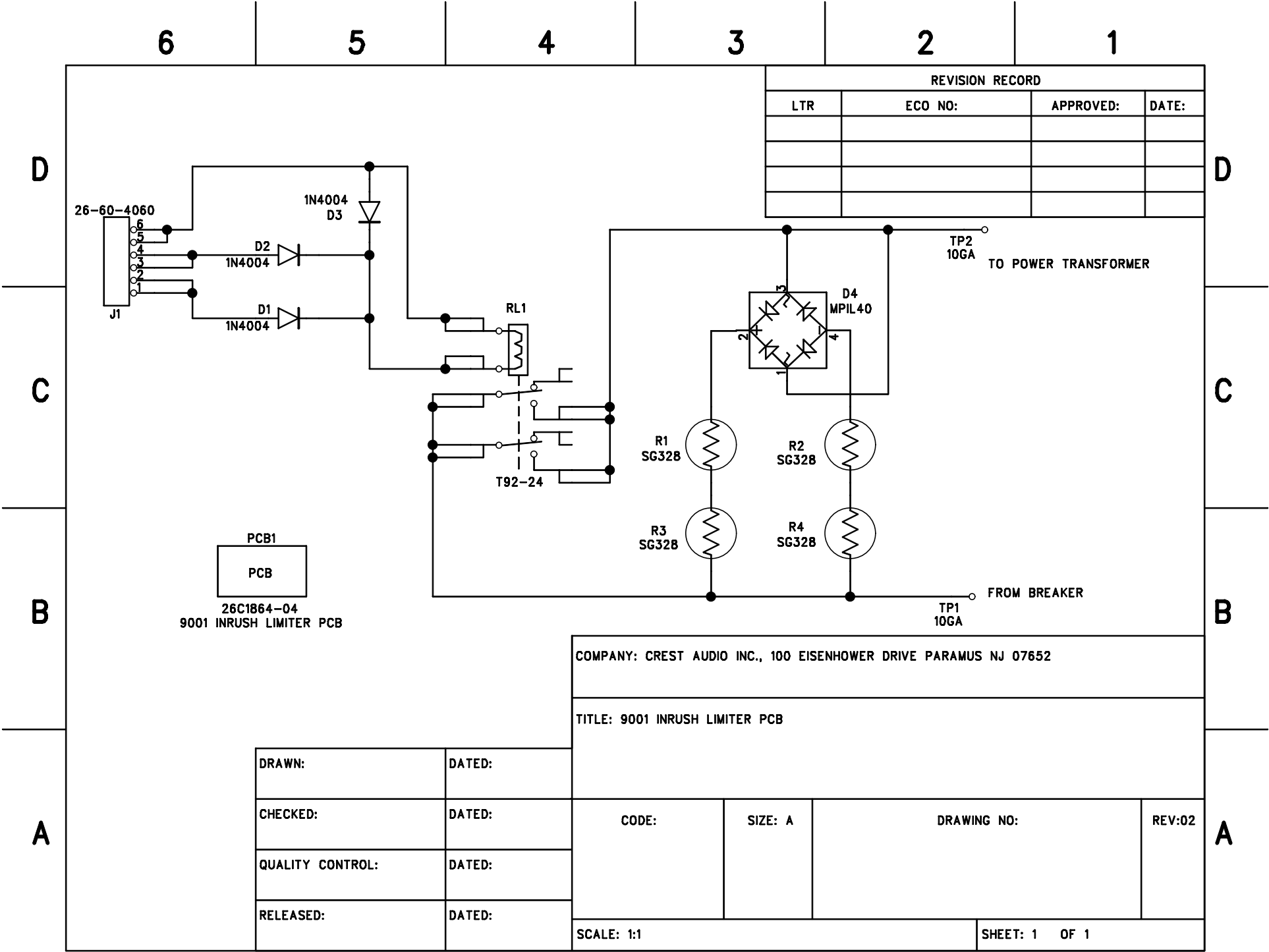
|                            |       |               |      |
|----------------------------|-------|---------------|------|
| COMPANY:                   |       |               |      |
| CREST AUDIO                |       |               |      |
| TITLE:                     |       |               |      |
| 9K1 POWER SUPPLY CAP BOARD |       |               |      |
| CODE:                      | SIZE: | DRAWING NO:   | REV: |
| SCALE:                     |       | SHEET: 1 OF 1 |      |

|                  |             |
|------------------|-------------|
| DRAWN: LAP       | DATED: 4/96 |
| CHECKED:         | DATED:      |
| QUALITY CONTROL: | DATED:      |
| RELEASED:        | DATED:      |









6

5

4

3

2

1

REVISION RECORD

| LTR | ECO NO: | APPROVED: | DATE: |
|-----|---------|-----------|-------|
|     |         |           |       |
|     |         |           |       |
|     |         |           |       |

D

D

C

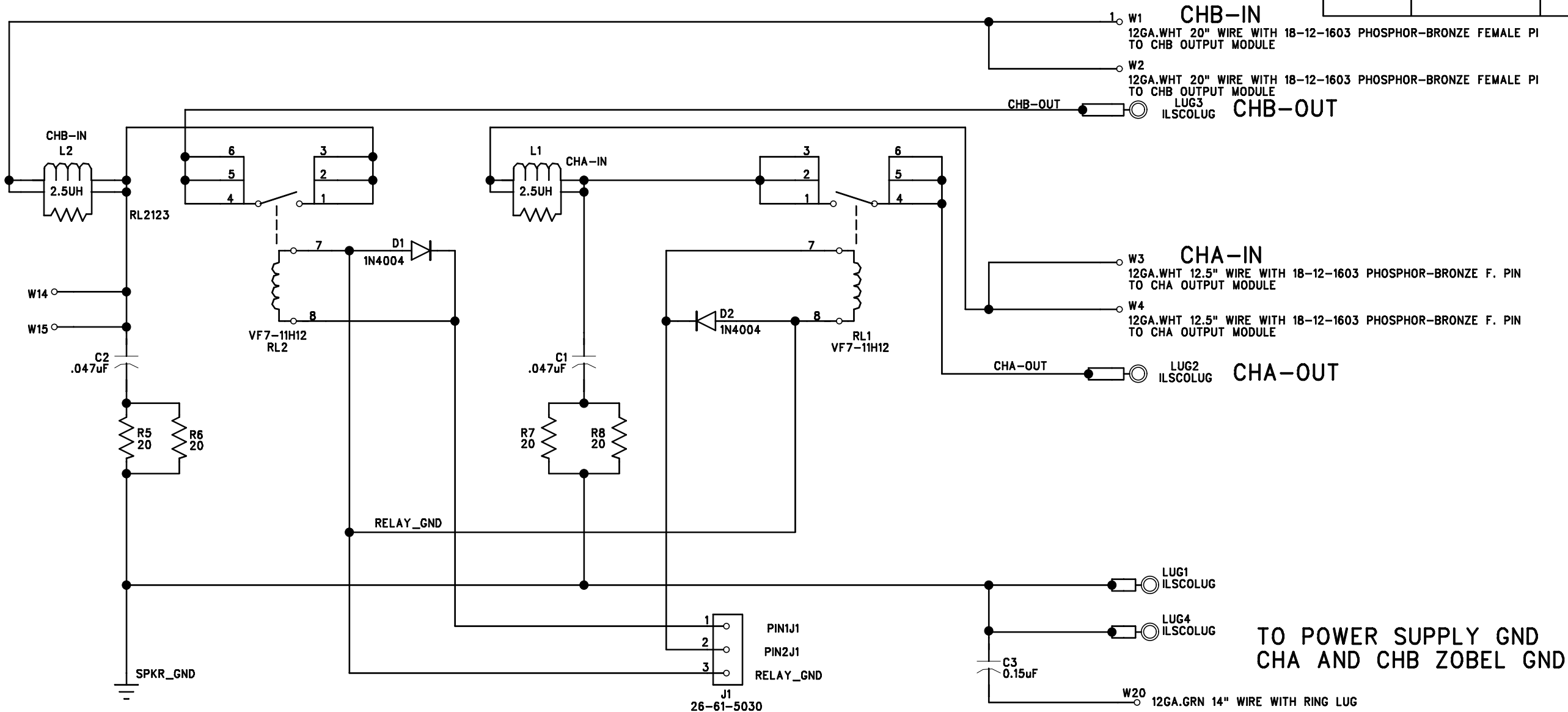
C

B

B

A

A



CON1  
CONNECTOR  
03-12-2022

CON2  
CONNECTOR  
03-12-2022

|                             |       |             |      |
|-----------------------------|-------|-------------|------|
| COMPANY:                    |       |             |      |
| TITLE:<br><b>9001 ZOBEL</b> |       |             |      |
| CODE:                       | SIZE: | DRAWING NO: | REV: |
| SCALE:                      |       | SHEET: OF   |      |

|                  |        |
|------------------|--------|
| DRAWN:           | DATED: |
| CHECKED:         | DATED: |
| QUALITY CONTROL: | DATED: |
| RELEASED:        | DATED: |

6

5

4

3

2

1

D

C

B

A

J2

1

2

3

4

5

6

7

8

9

10

11

12

13

14

15

16

22GA. GRN/BLK WIRE

22GA. GRN/BLK WIRE

22GA. BLACK WIRE

22GA. BLACK WIRE

22GA. RED/BLK WIRE

22GA. RED/BLK WIRE

22GA. BLACK WIRE

22GA. BLACK WIRE

22GA. RED WIRE

22GA. RED WIRE

22GA. BLACK WIRE

22GA. BLACK WIRE

22GA. RED/WHT WIRE

22GA. RED/WHT WIRE

22GA. GREY/BLK WIRE

22GA. WHITE/ORANGE WIRE

26-61-4160

26-61-4160

J1

1

2

3

4

5

6

7

8

9

10

11

12

13

14

15

16

REVISION RECORD

| LTR | ECO NO: | APPROVED: | DATE: |
|-----|---------|-----------|-------|
|     |         |           |       |
|     |         |           |       |
|     |         |           |       |
|     |         |           |       |

PCB1

PCB

PEM1

P1

PAD/A

1

PEM2

P2

PAD/A

1

COMPANY:

CREST AUDIO

TITLE:

9K1 HARNESS ADAPTER PCB

|                  |               |
|------------------|---------------|
| DRAWN: LAP       | DATED:3/26/96 |
| CHECKED:         | DATED:        |
| QUALITY CONTROL: | DATED:        |
| RELEASED:        | DATED:        |

|        |        |             |               |
|--------|--------|-------------|---------------|
| CODE:  | SIZE:A | DRAWING NO: | REV:00        |
| SCALE: |        |             | SHEET: 1 OF 1 |