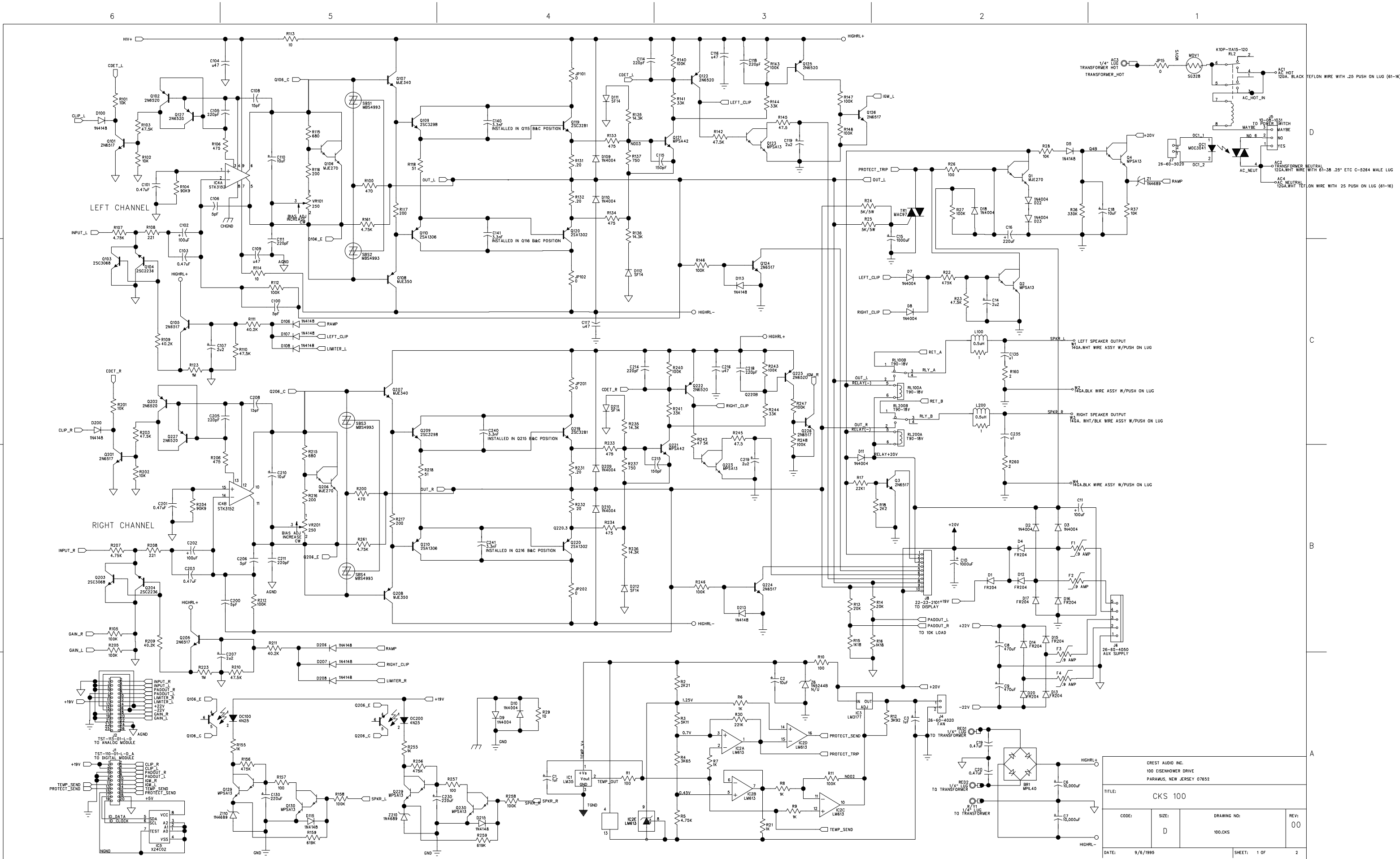
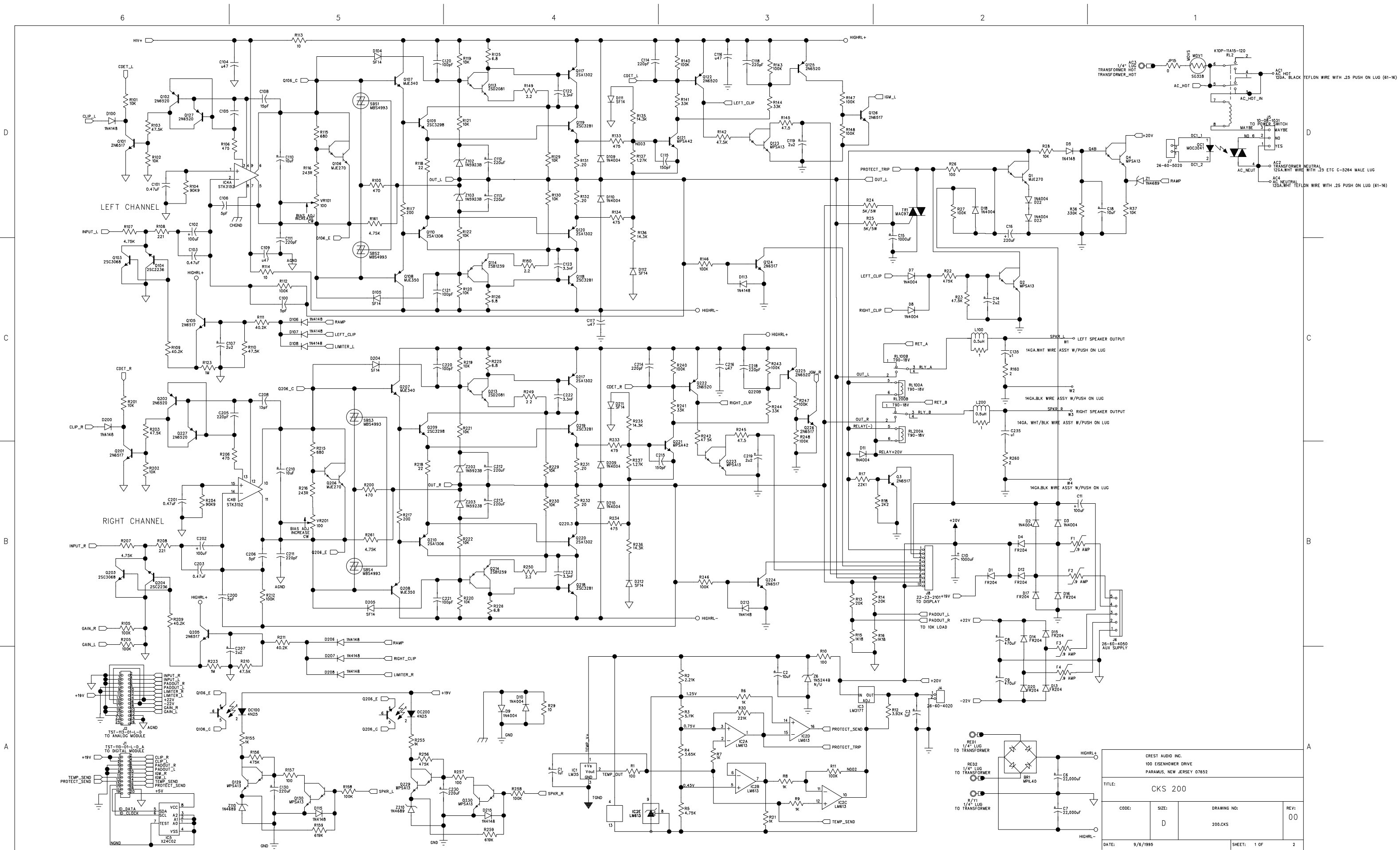


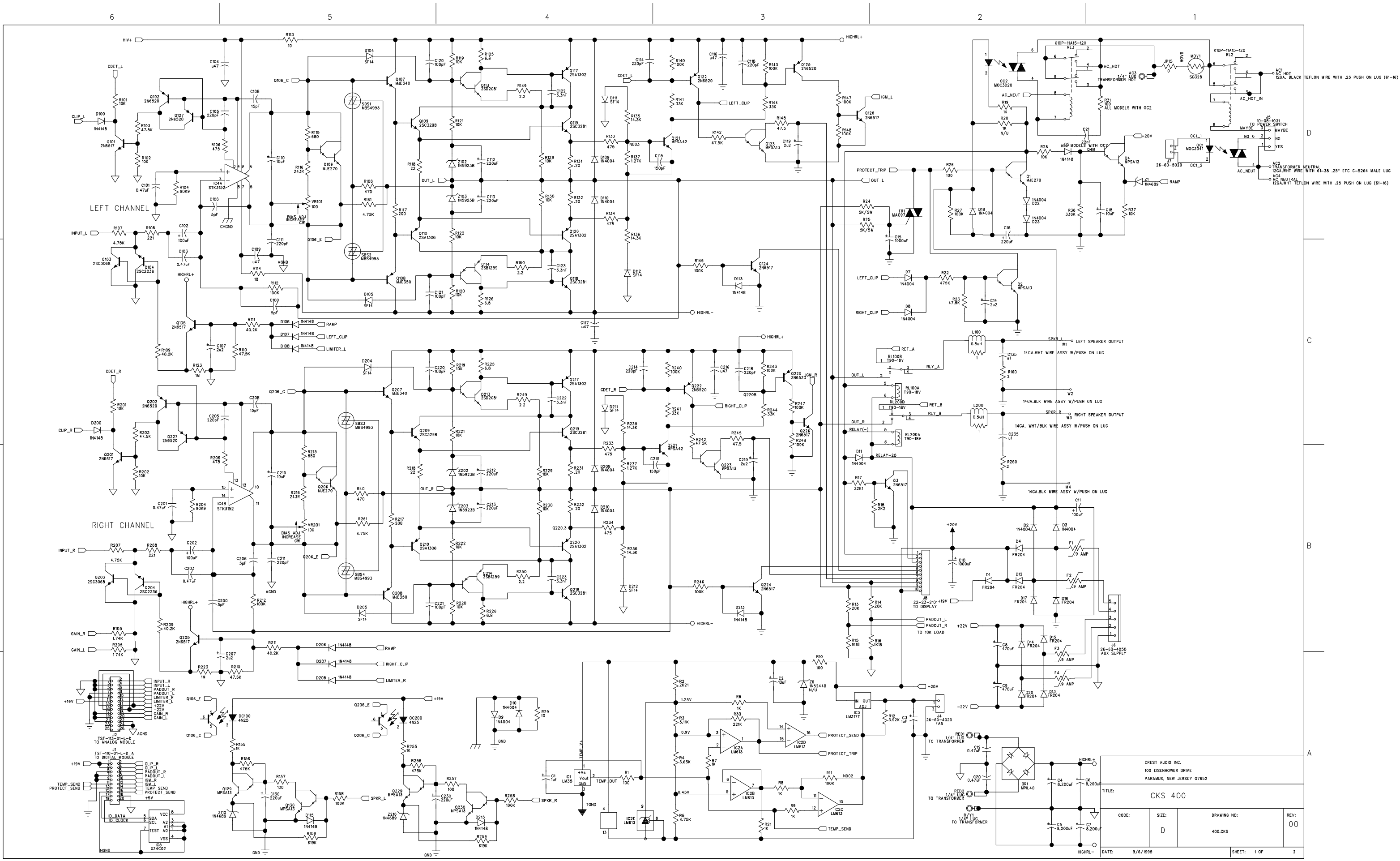


CK Series power amplifiers

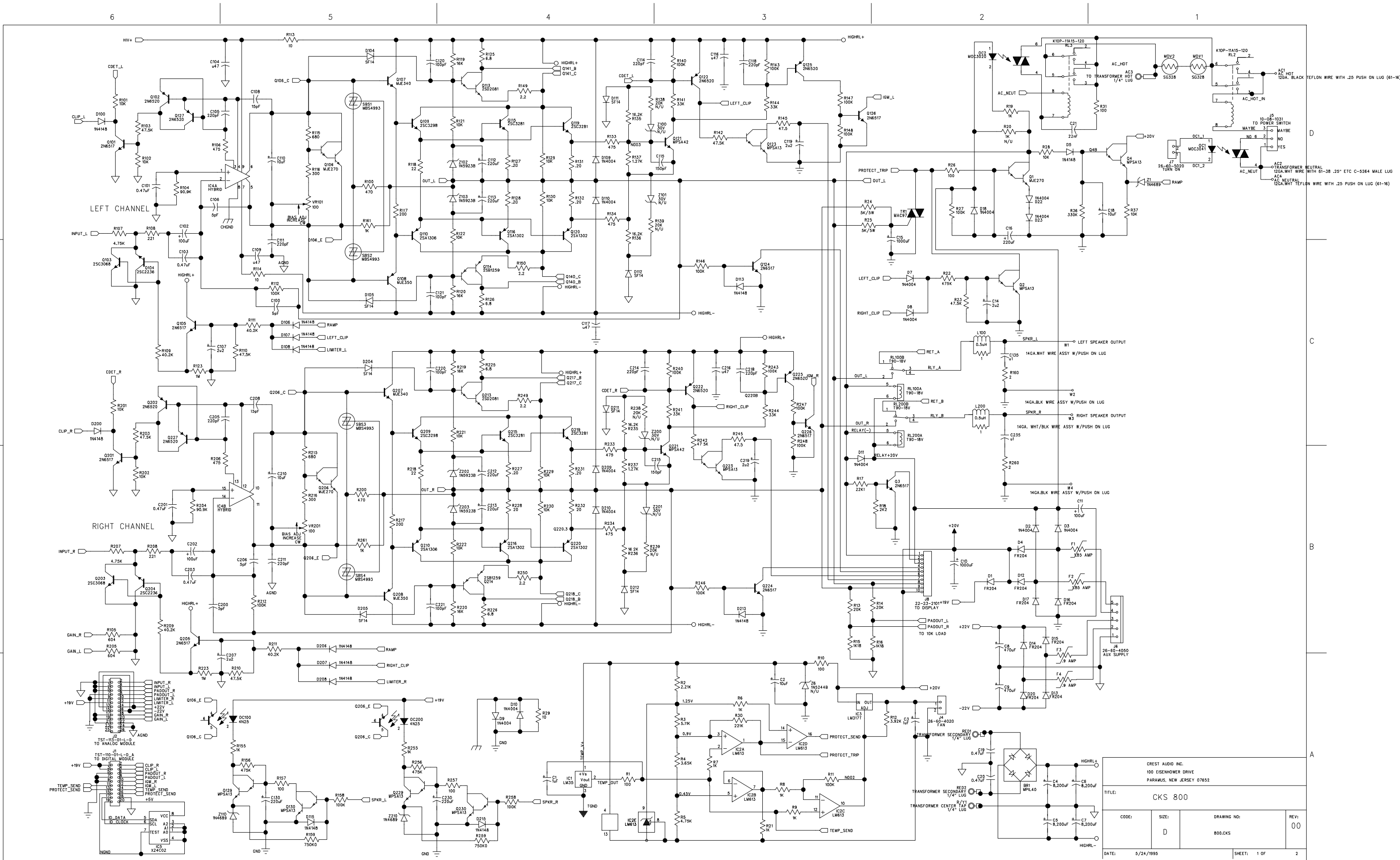
1. CKS100 Main board
2. CKS200 Main board
3. CKS400 Main board
4. CKS800 Main board
5. CKS800 Booster board
6. CKS800-2 Main board
7. CKS 800-2 H-class booster board
8. CKS1200-2 Preamp
9. CKV100 Main board
10. CKV200 Main board
11. CKV400 Main board
12. CKV800 Main board
13. CKV800 Booster board
14. CKX150 Main board
15. CKX300 Main board
16. CKX500 Main board
17. CKX800 Main board
18. CKX Output transformer compensation EQ
19. CKX Output transformer wiring
20. Preamp CKS1600-2,CKV1600, CKV2400 Schematic 1
21. Preamp CKS1600-2,CKV1600, CKV2400 Schematic 2
22. Preamp CKS1600-2,CKV1600, CKV2400 Schematic 3
23. Preamp CKS1600-2,CKV1600, CKV2400 Schematic 4
24. Output module CKS1200-2, CKS1600-2, CKV1600, CKV2400
25. Display board for CKS/CKV 100, 200, 400, 800, CKX 150, 300, 500, 800
26. Display board for CKS1200-2, CKS1600-2, CKV1600, CKV2400
27. Zobel board - All models
28. Power supply CKS1200-2, CKS1600-2, CKV1600, CKV2400
29. Fan driver CKS1200-2, CKS1600-2, CKV1600, CKV2400







CREST AUDIO INC. 100 EISENHOWER DRIVE PARAMUS, NEW JERSEY 07652				
TITLE: CKS 400				
CODE: D	SIZE: 400.CKS	DRAWING NO: 400.CKS	REV: 00	
DATE: 9/6/1995		SHEET: 1 OF 2		



CREST AUDIO INC. 100 EISENHOWER DRIVE PARAMUS, NEW JERSEY 07652			
TITLE: CKS 800			
CODE: D	SIZE: 800.CKS	DRAWING NO: 800.CKS	REV: 00
DATE: 5/24/1995		SHEET: 1 OF 2	

D

C

B

A

6

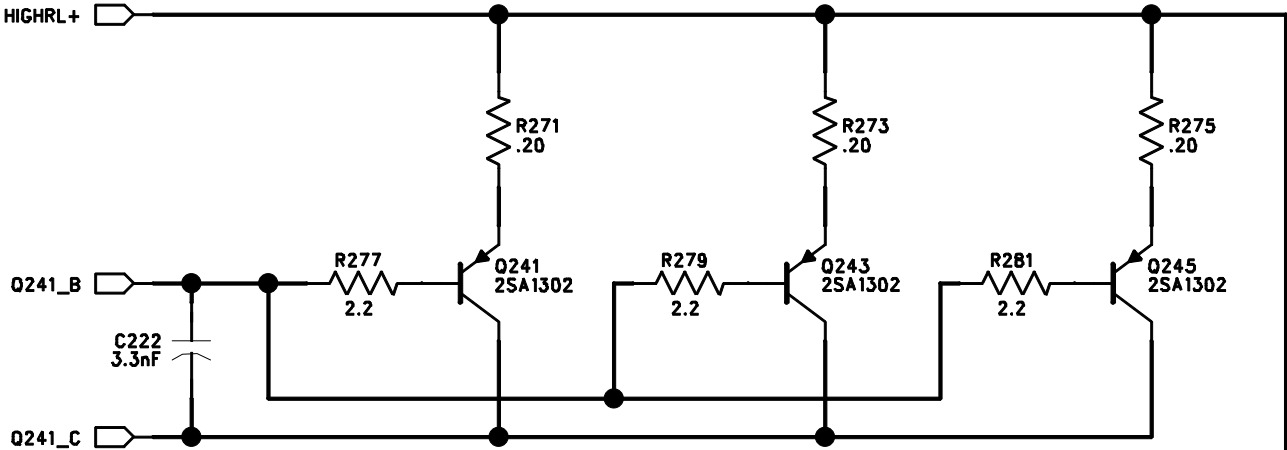
5

4

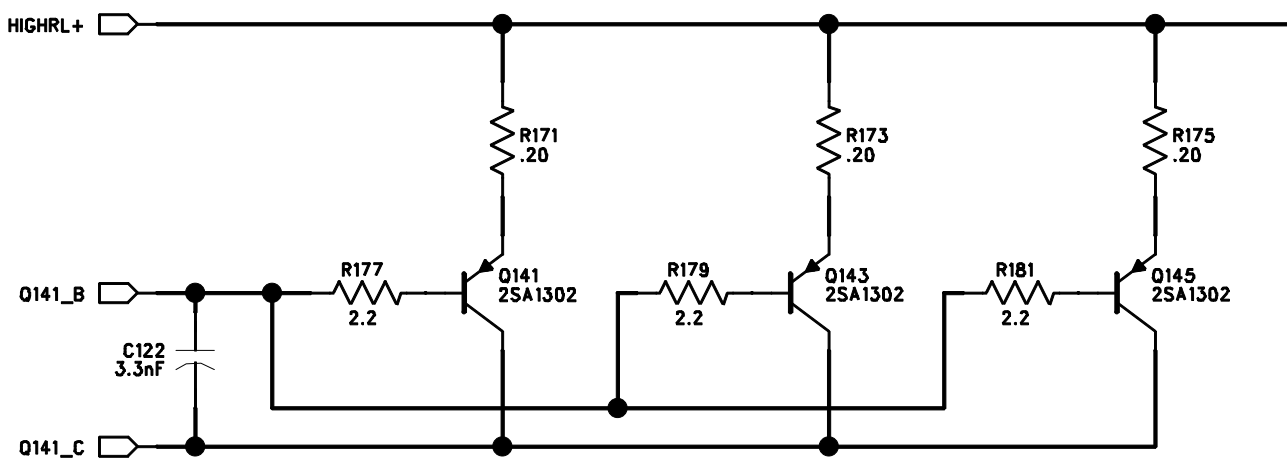
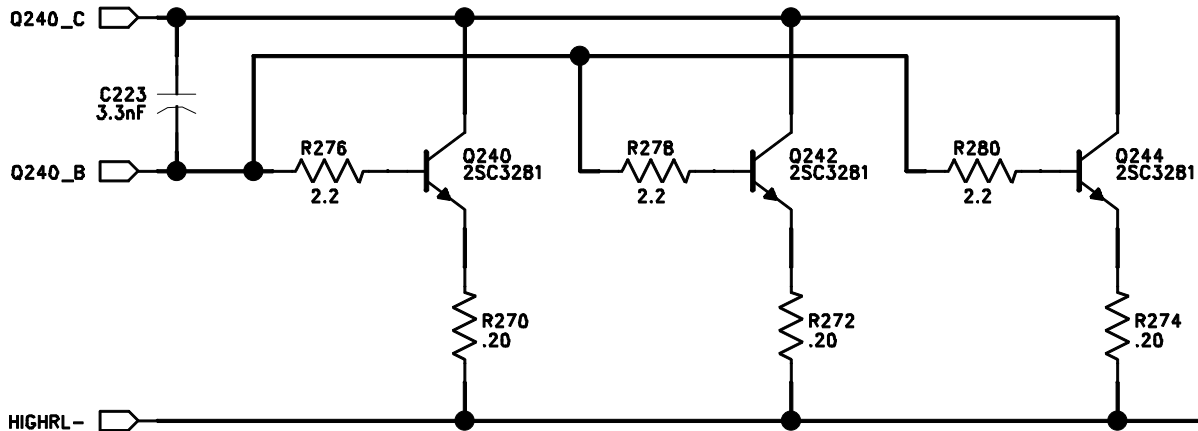
3

2

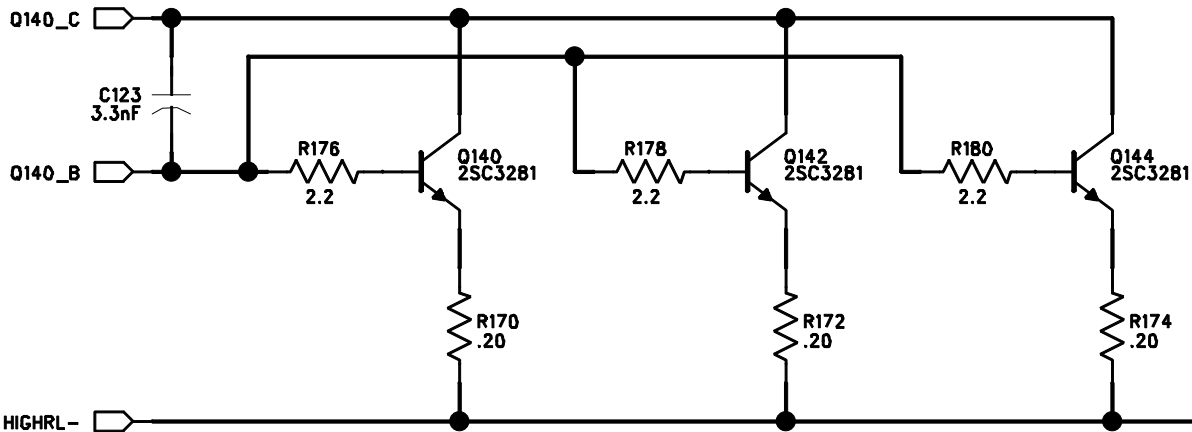
1



C228
u47



C128
u47



COMPANY:

TITLE:

CKS800/THX800 BOOSTER BOARD

CODE:

SIZE:

DRAWING NO:

REV:

BOOST_AB.CKS

SCALE:

SHEET: OF

DRAWN:

DATED:

CHECKED:

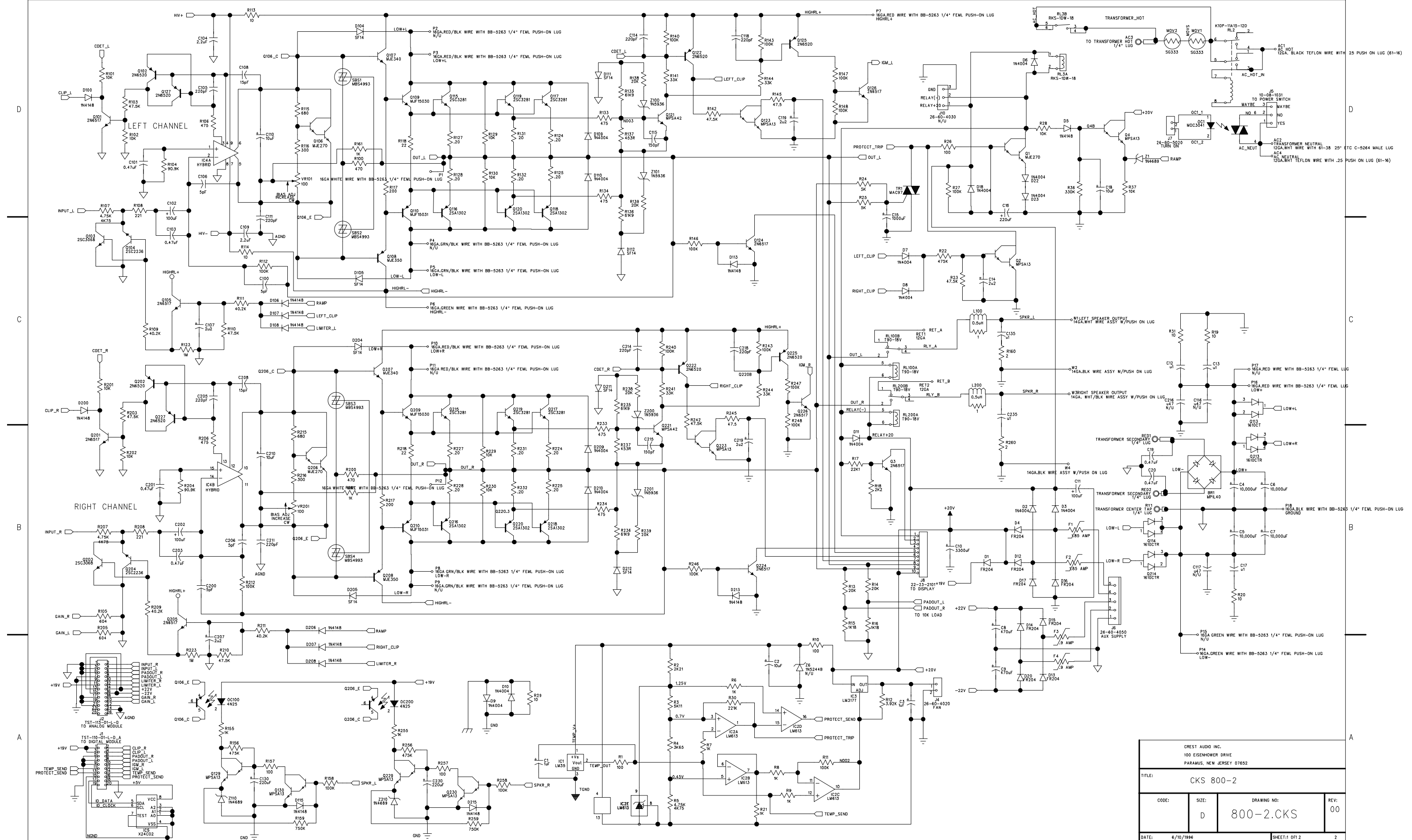
DATED:

QUALITY CONTROL:

DATED:

RELEASED:

DATED:

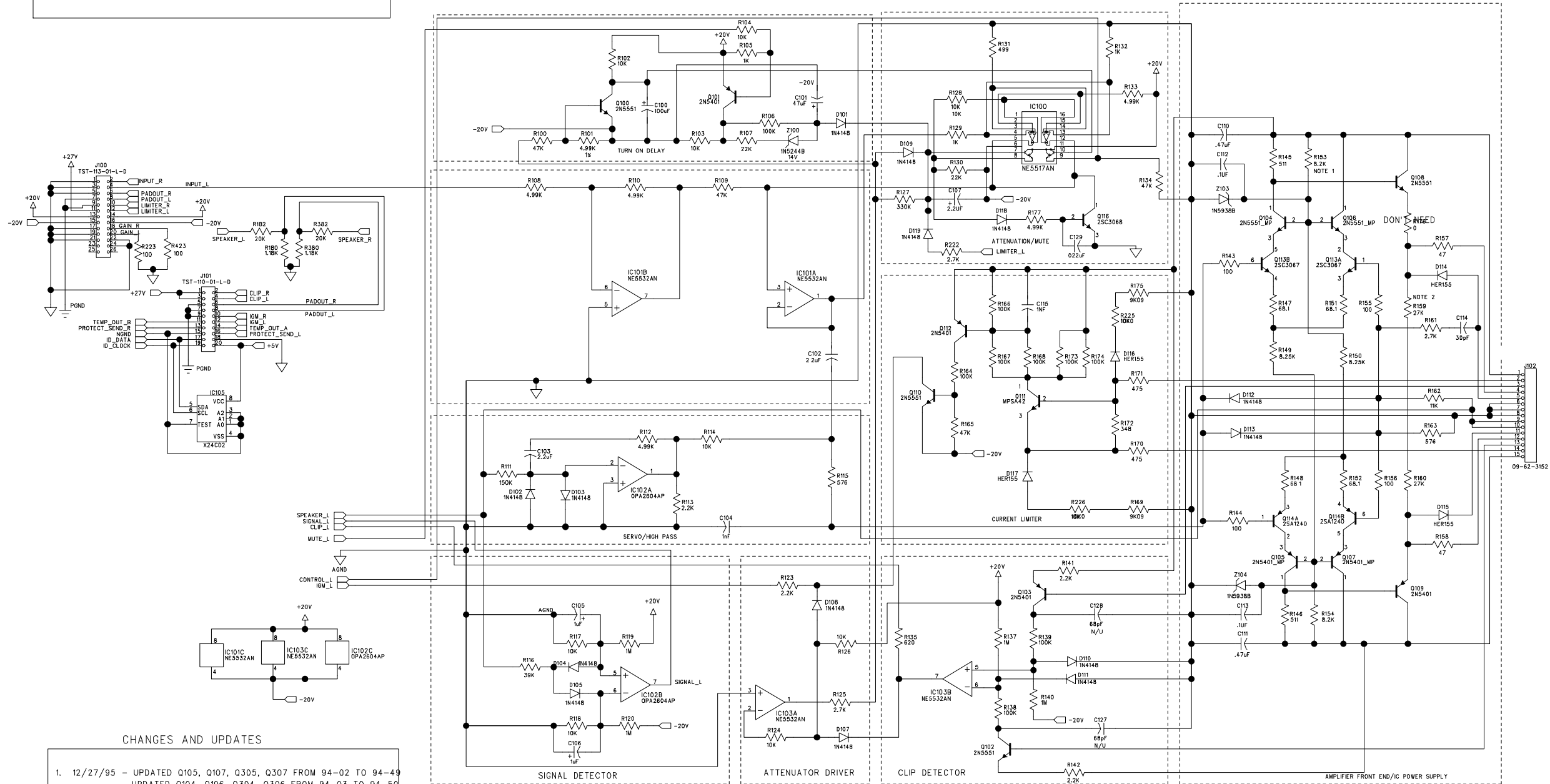


CREST AUDIO INC. 100 EISENHOWER DRIVE PARAMUS, NEW JERSEY 07652			
TITLE: CKS 800-2			
CODE: D	SIZE: 800-2.CKS	DRAWING NO: 00	REV: 00
DATE: 6/10/1996		SHEET: 1 OF 2	

REVISION RECORD			
LTR	ECO NO:	APPROVED:	DATE:

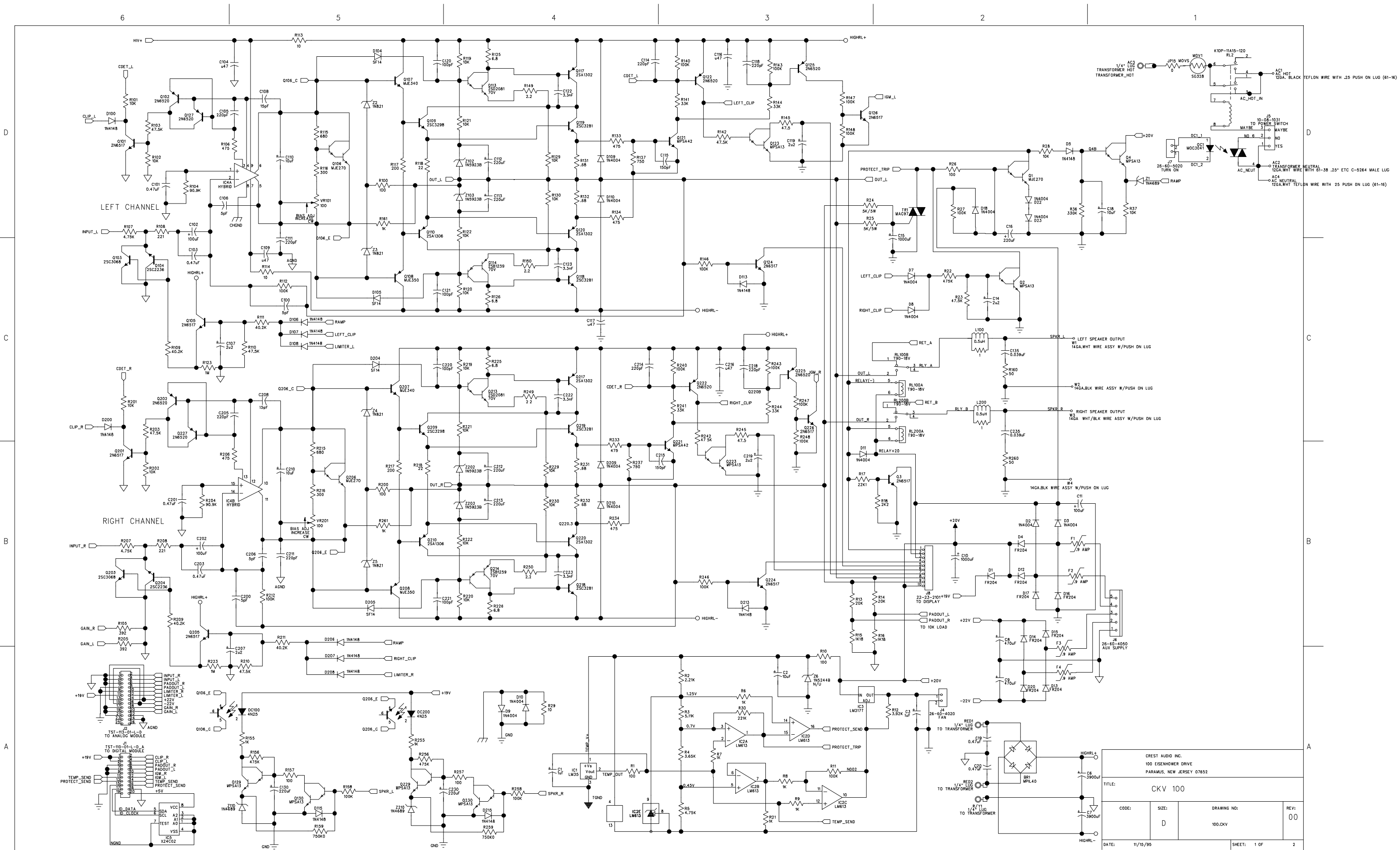
GAIN RESISTORS CHANGES PER MODEL

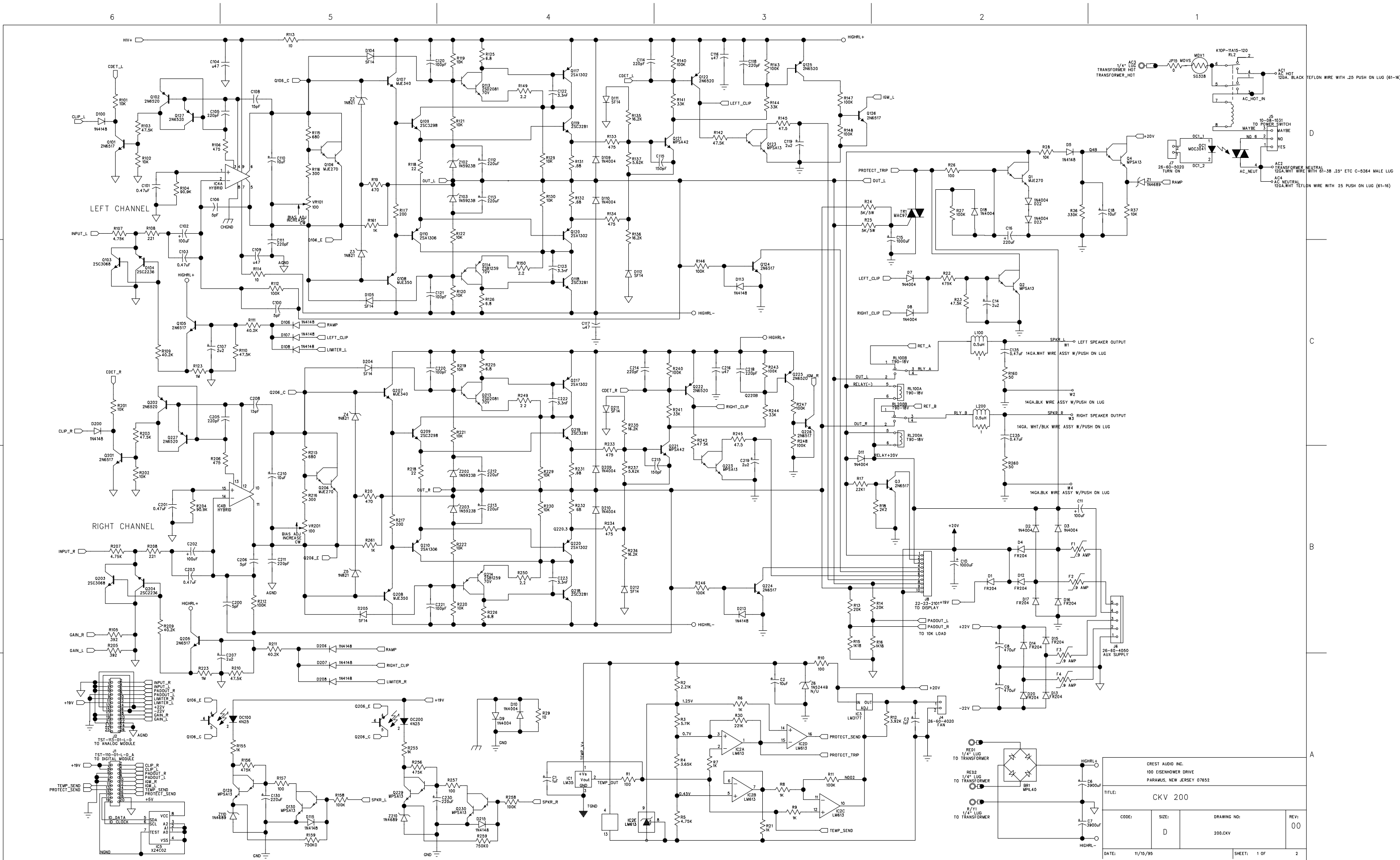
1. MODELS CKV1600, CKV2400 AND CKS1800 RESISTOR VALUE IS 392 OHM.
2. MODEL CKS1200 RESISTOR VALUE IS 402 OHM.



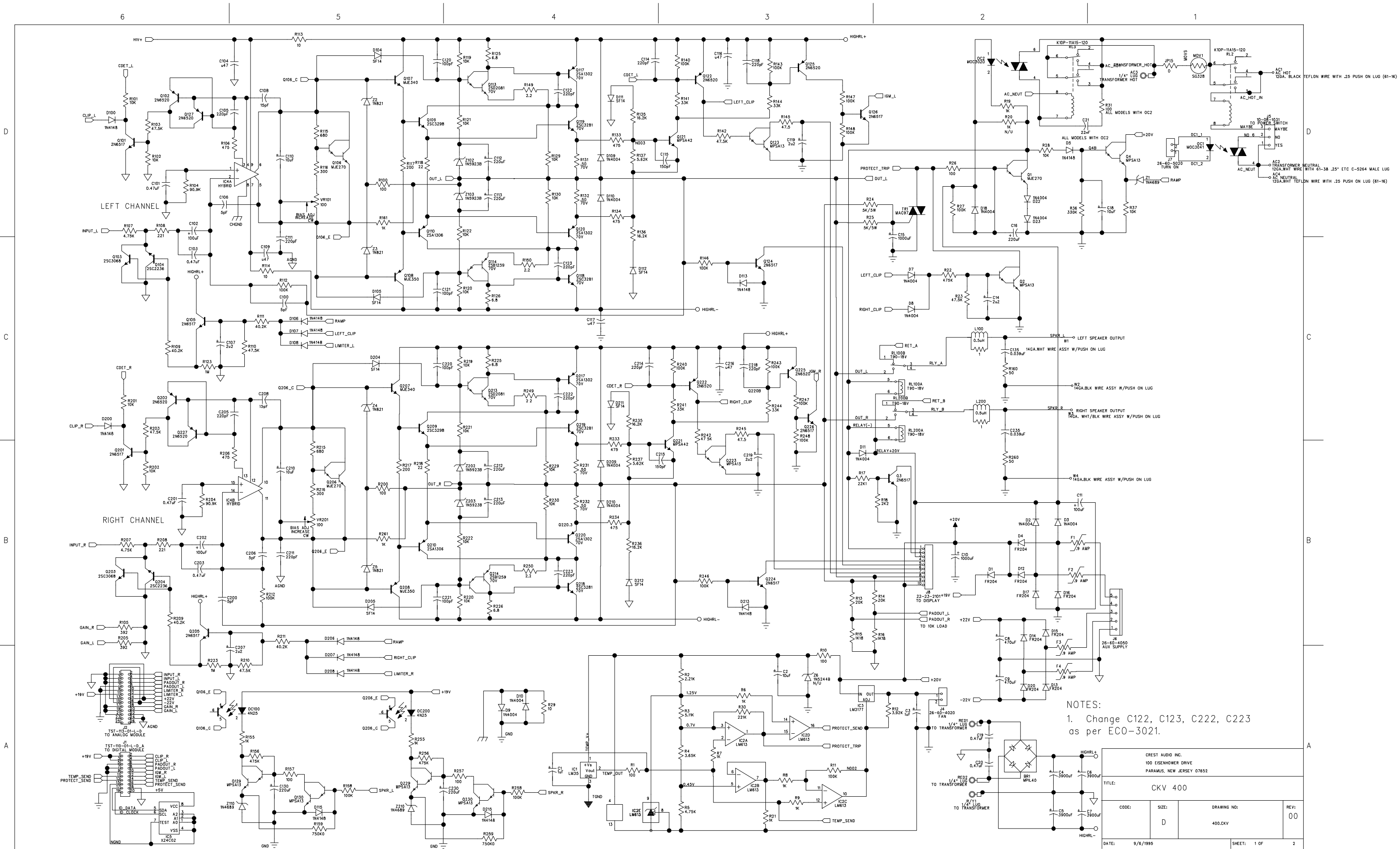
CHANGES AND UPDATES

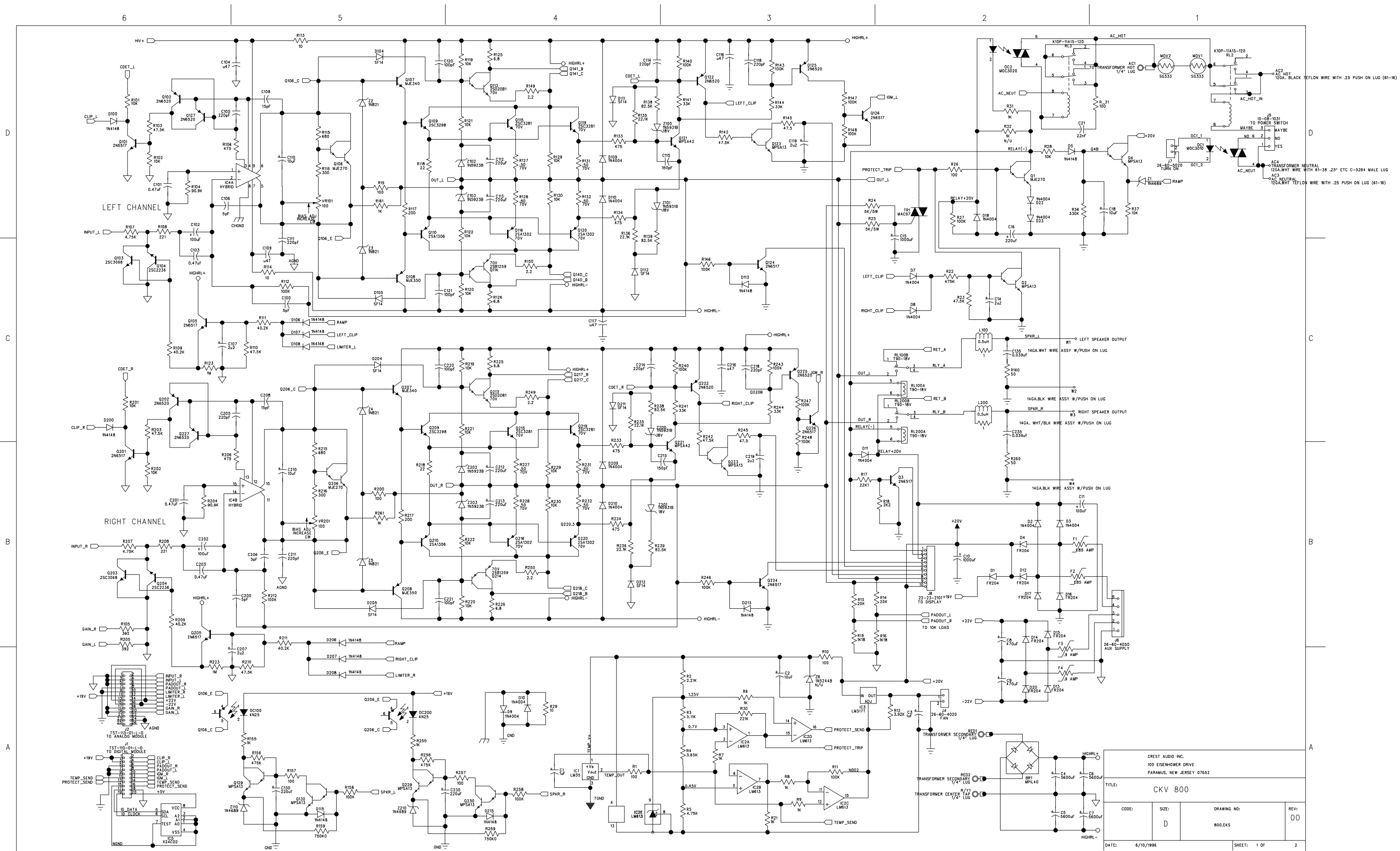
1. 12/27/95 - UPDATED Q105, Q107, Q305, Q307 FROM 94-02 TO 94-49
 UPDATED Q104, Q106, Q304, Q306 FROM 94-03 TO 94-50
 ADDED TO-92 HEATSINKS TO HOUSE B.O.M.
 DELETED C127, C128, C327, OFF HOUSE B.O.M.
2. 2/5/95- ON CKS1200 R223 AND R423 ARE 402R 1x





CREST AUDIO INC. 100 EISENHOWER DRIVE PARAMUS, NEW JERSEY 07652			
TITLE: CKV 200			
CODE: D	SIZE: 200.0KV	DRAWING NO: 1 OF 2	REV: 00
DATE: 11/15/95		SHEET: 1 OF 2	





6

5

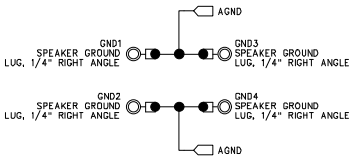
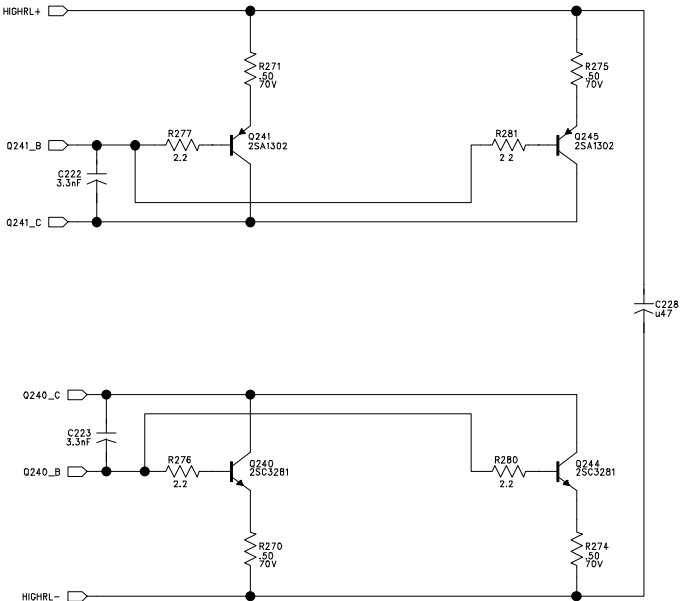
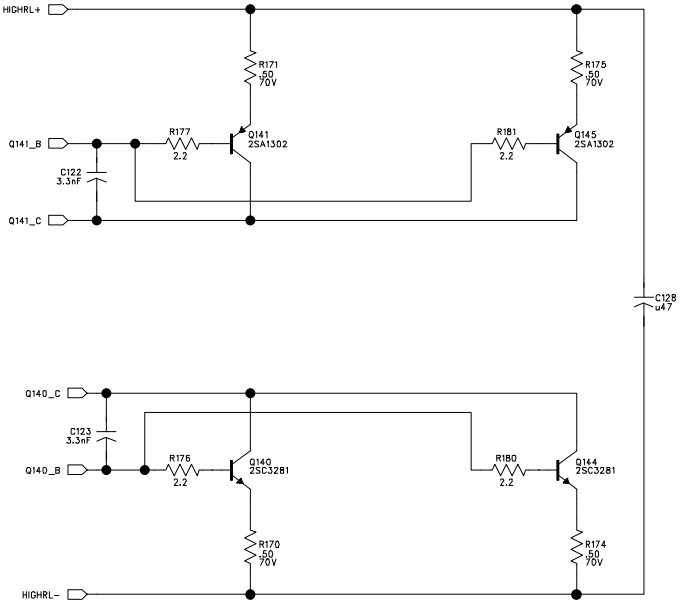
4

3

2

1

REVISION RECORD			
LTR	ECO NO:	APPROVED:	DATE:



TITLE: CKV 800 BOOSTER BOARD

DRAWN:	DATED:	CODE:	SIZE:	DRAWING NO:	REV:
CHECKED:	DATED:	BOOST_AB.CKV			
QUALITY CONTROL:	DATED:				
RELEASED:	DATED:				
SCALE:		SHEET: OF			

6

5

4

3

2

1

D

C

B

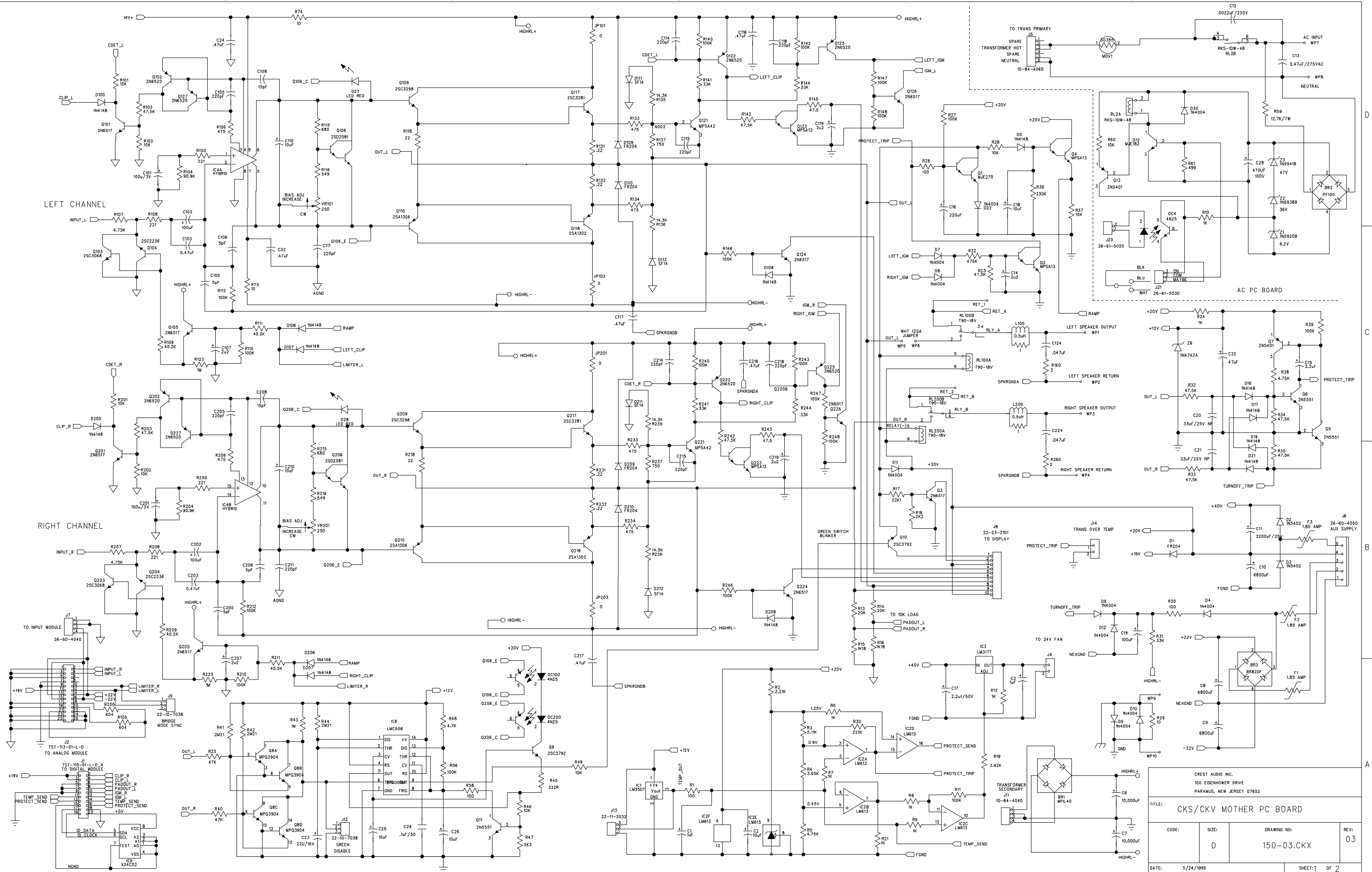
A

D

C

B

A



CREST AUDIO INC. 100 EISENHOWER DRIVE PARAMUS, NEW JERSEY 07652			
TITLE: CKS/CKV MOTHER PC BOARD			
CODE: D	SIZE: 150-03.CKX	DRAWING NO: 150-03.CKX	REV: 03
DATE: 5/24/1995	SHEET: 1	OF 2	

D

C

B

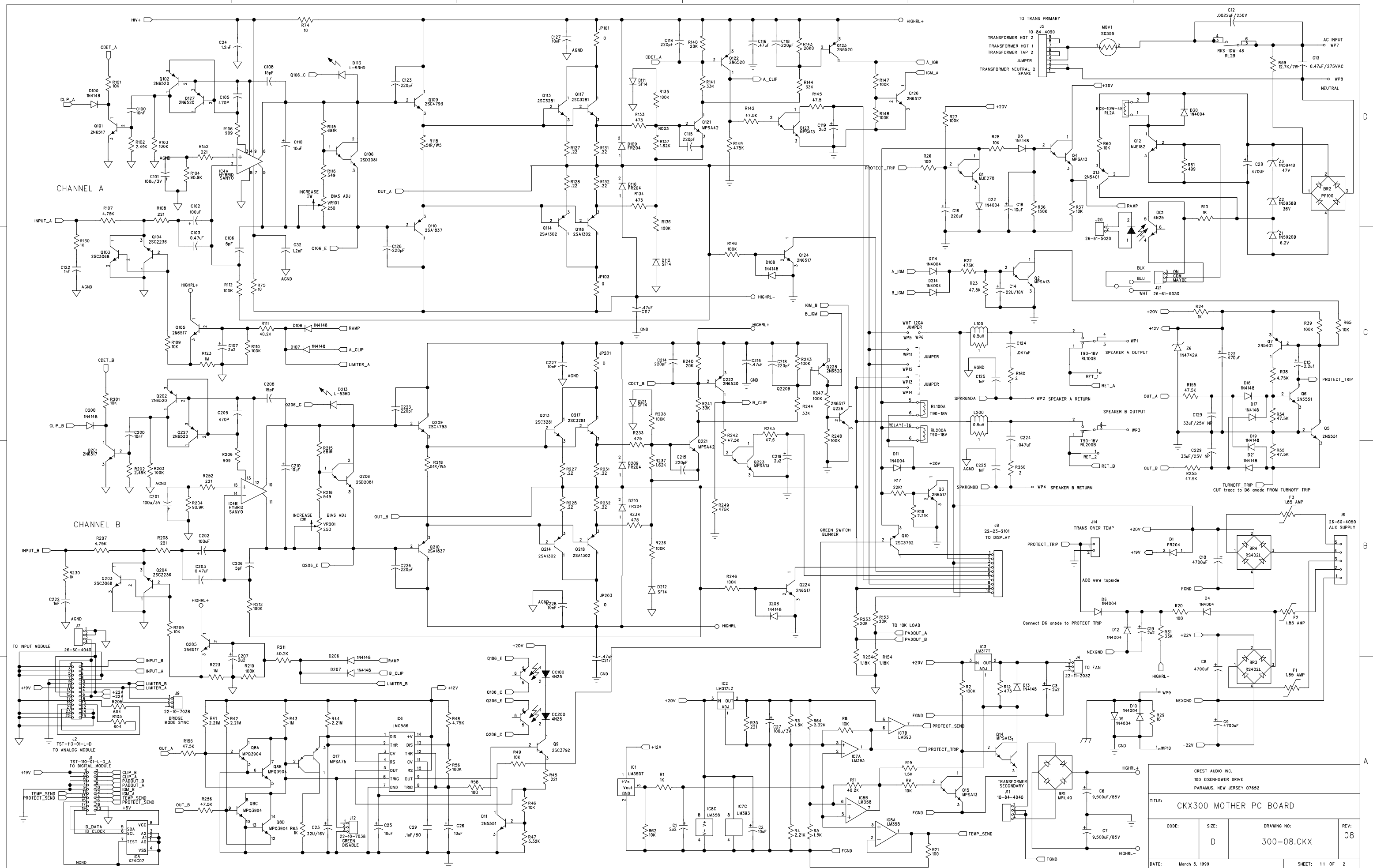
A

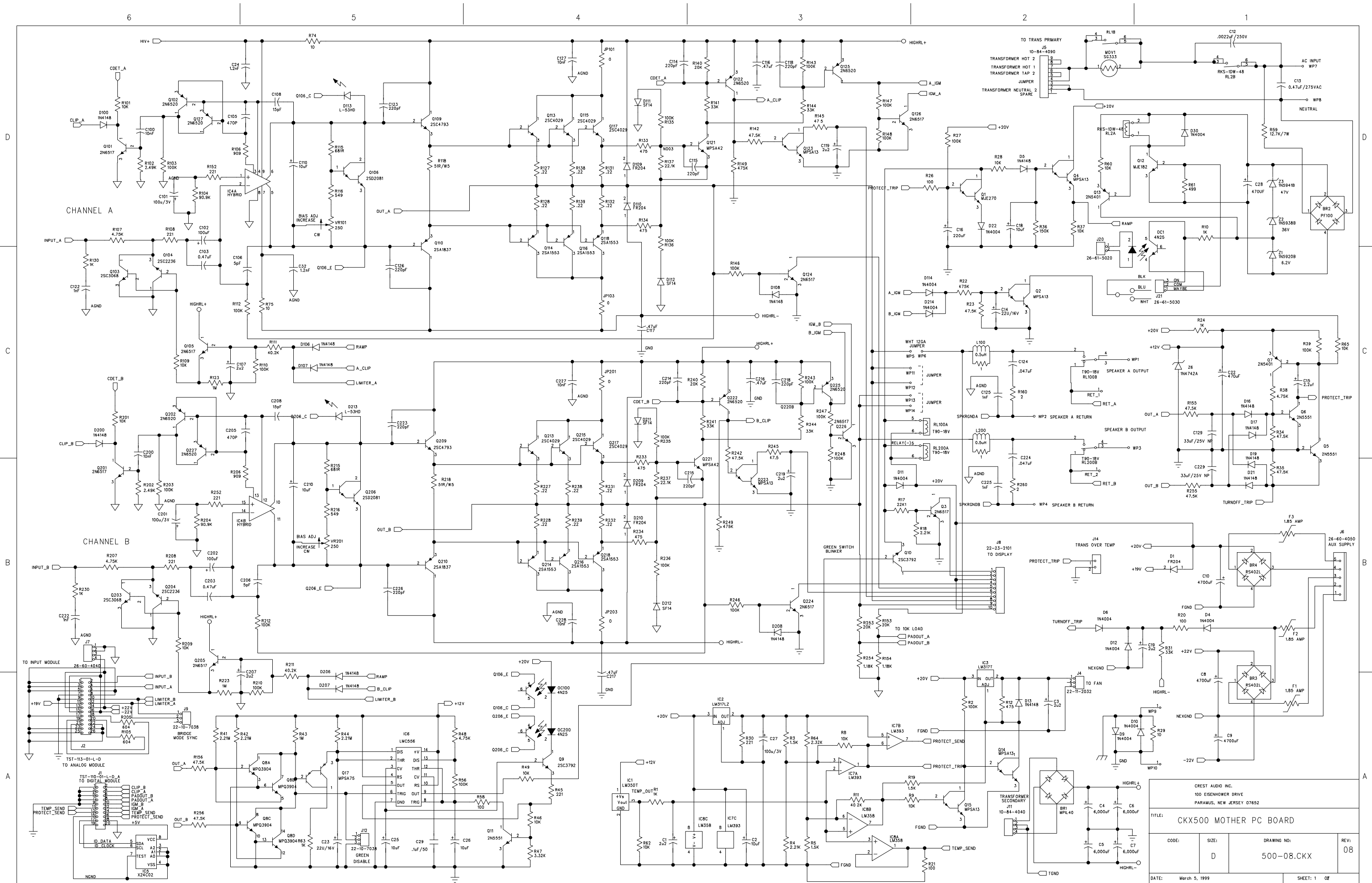
D

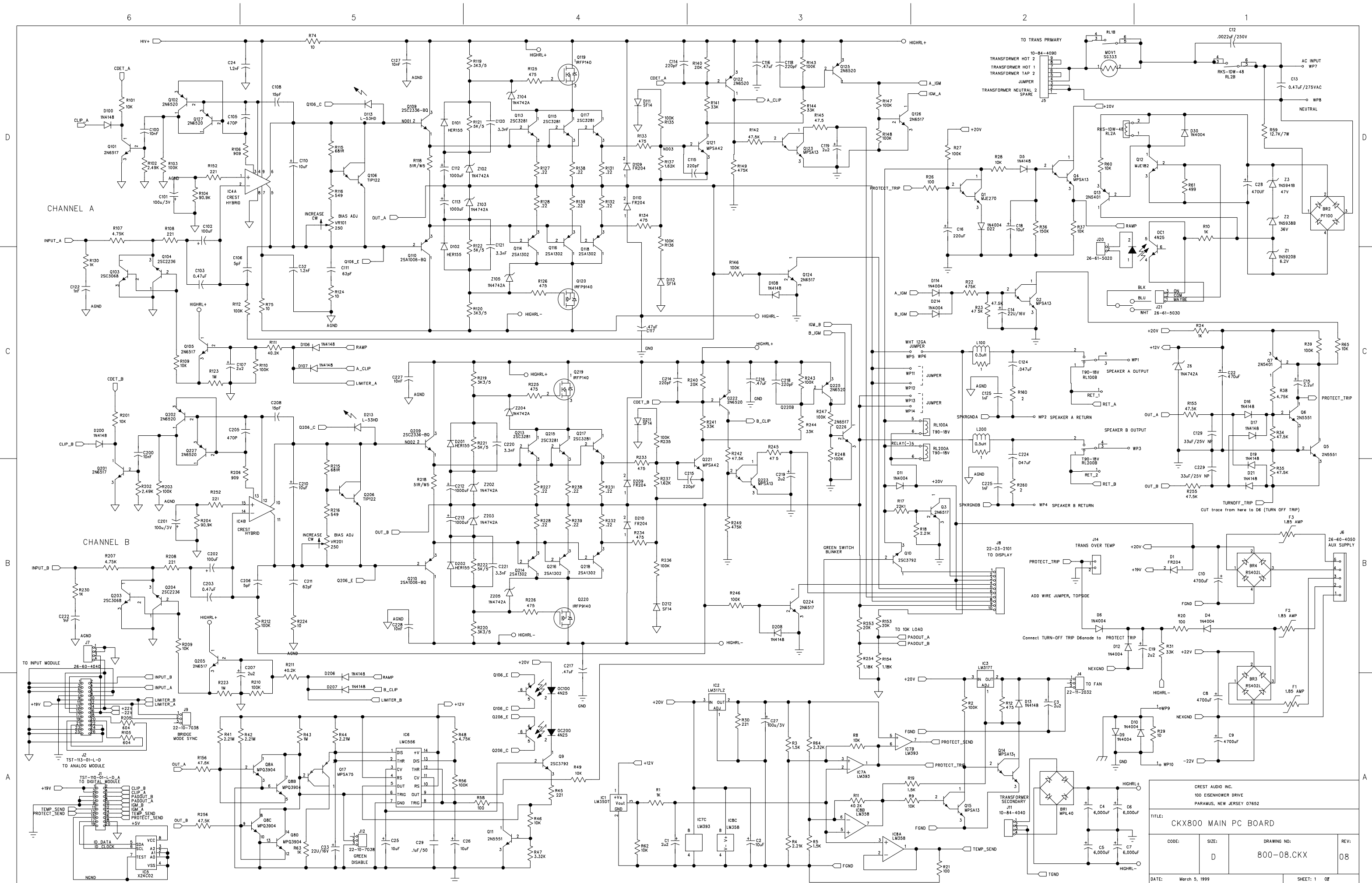
C

B

A







6

5

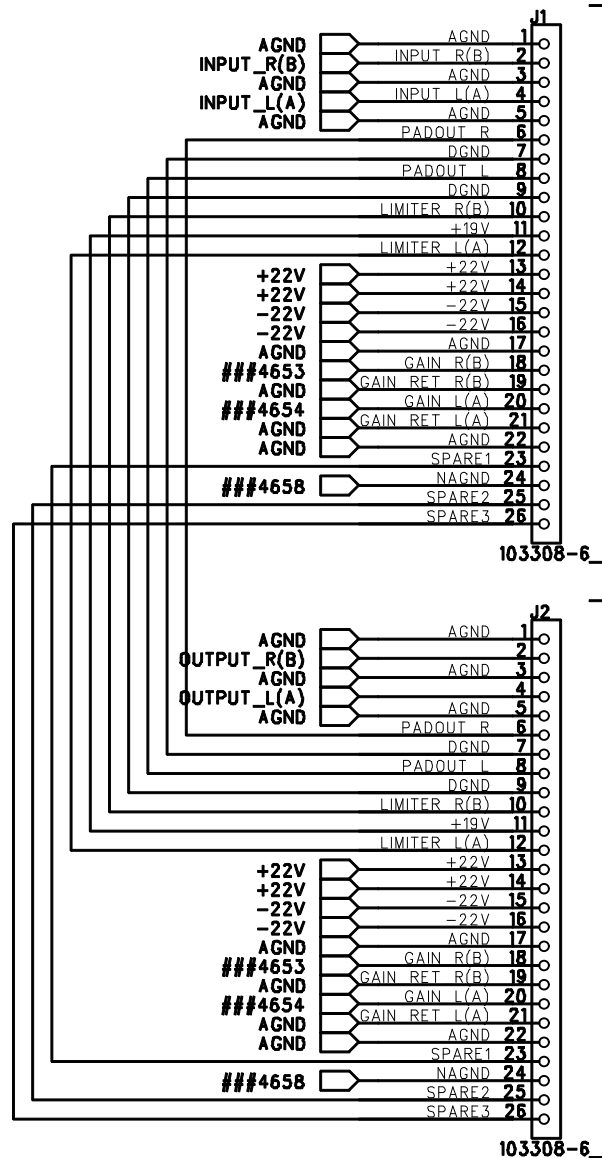
4

3

2

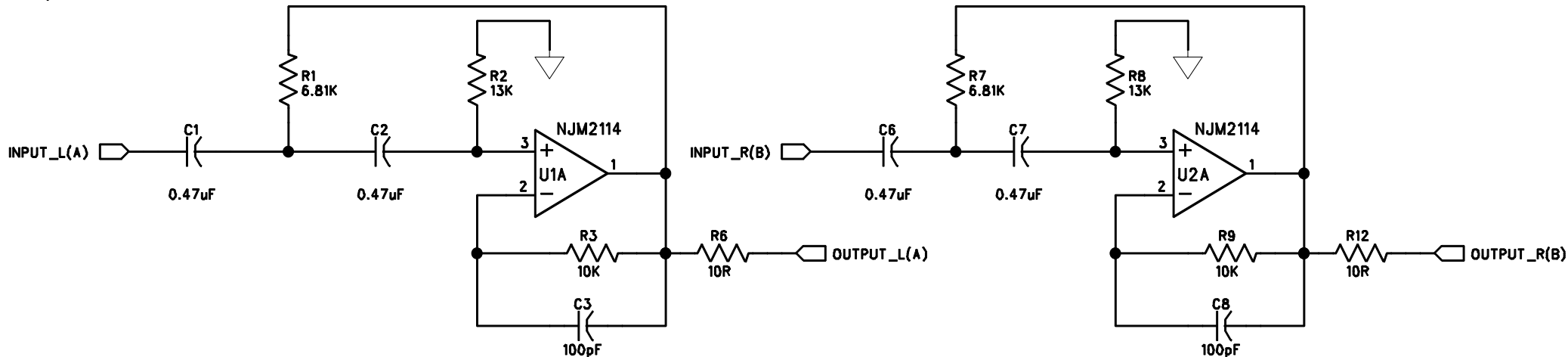
1

REVISION RECORD			
LTR	ECO NO:	APPROVED:	DATE:

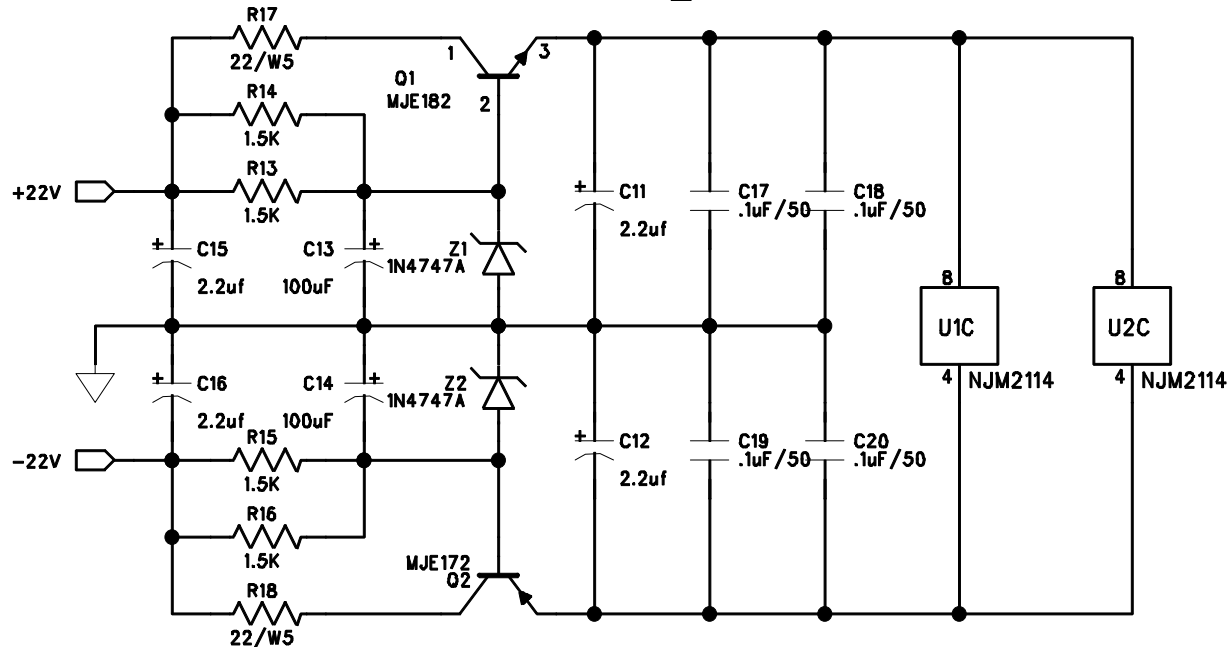


From Input Module

To Amplifier



NOTE:
1) C4, C5, C9, C10 NOT USED



COMPANY:
CREST AUDIO INC, 100 EISENHOWER DR. PARAMUS NJ 07652

TITLE:
CKX SERIES TRANSFORMER OUTPUT EQUALIZER

DRAWN: I. FERSTENBERG	DATED: 2/24/98
CHECKED: C.Mahoney	DATED: 2/24/98
QUALITY CONTROL:	DATED:
RELEASED:	DATED:

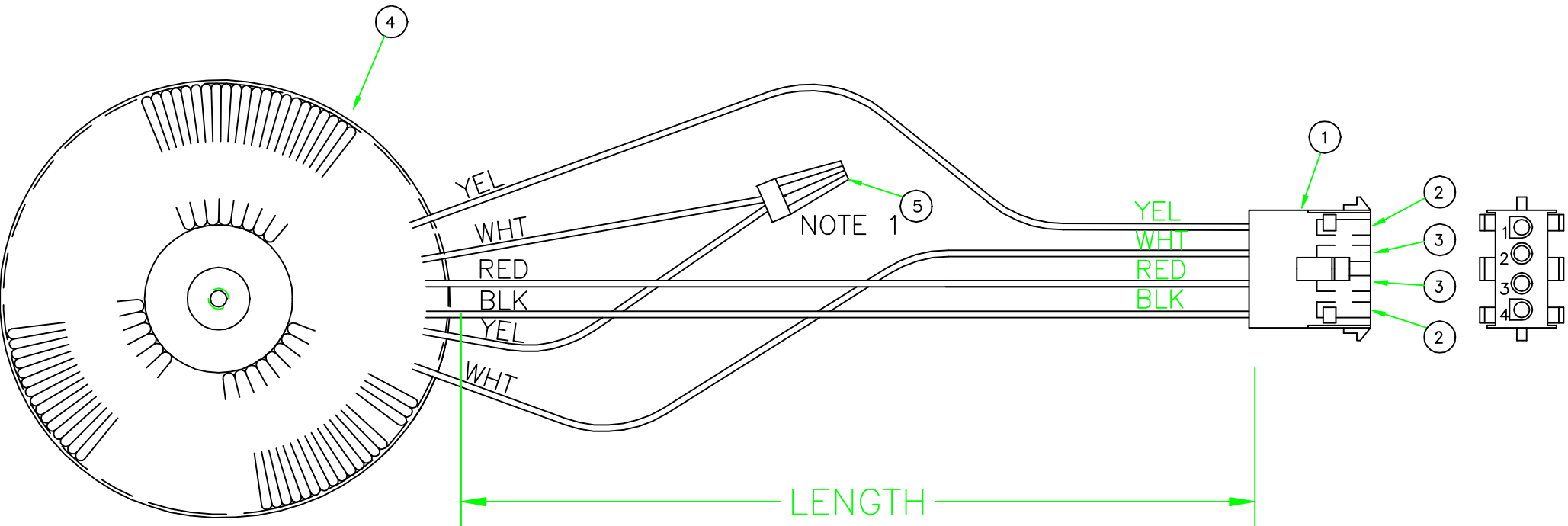
CODE:	SIZE: B	DRAWING NO: CKXE000.SCH 21B3301-A	REV: A
-------	------------	---	-----------

SCALE: 1:1

SHEET: 1 OF 1


D

6		5		4		3		2		1	
ITEM	QUAN	DESCRIPTION	MANUFACTURER	MFG PART No.	CREST PART No.	REV.	ECO	DESCRIPTION	APP.	DATE	
1	1	CONN. 4 PIN CAP HOUSING	MOLEX	50-84-2041	24000295	01		LENGTH WAS 7"	RJ	20 FEB 98	
2	2	MALE PIN 14-20 GA.	MOLEX	02-08-2005	24000521						
3	2	FEMALE PIN 14-20 GA.	MOLEX	02-08-1003	24000219						
4	1	CKX OUTPUT TRANSFORMER			93-xxx						
5	1	CRIMP CAP	AMP	36965	25000001						



NOTES:
1. CONNECT SECONDARY 1 FINISH TO
SECONDARY 2 START.

6		5		4		3		2		1	
WIRE	DESCRIPTION	COLOR	LENGTH	STRIP LENGTH	TO						
1	SECONDARY 1 START	WHT	7 1/2"		J1-1						
2	SECONDARY 1 FINISH	YEL			NOTE 1						
3	PRIMARY START	BLK	7 1/2"		J1-2						
4	PRIMARY FINISH	RED	7 1/2"		J1-3						
5	SECONDARY 2 START	WHT			NOTE 1						
6	SECONDARY 2 FINISH	YEL	7 1/2"		J1-4						

 PARAMUS, NJ 07652	ORIG'LY DWN.: R.J.	DATE: 30JUL97	TITLE/APPLICATION CKX150 OUTPUT TRANSFORMER PLUG WIRING	
	SCALE: NTS	DO NOT SCALE DRAWING		
	TOL.: .XX: +/- .02 .XXX: +/- .01 FRACT: +/- 1/64	<: +/- 1"		
	MAT'L: AS NOTED		DWG.# 22B3478	REV.: 01
	FINISH: -		CREST P/N	
			CURRENT REVISION DRAWN BY:	
			APPROVED BY:	
			DATE:	
			DATE:	

6

5

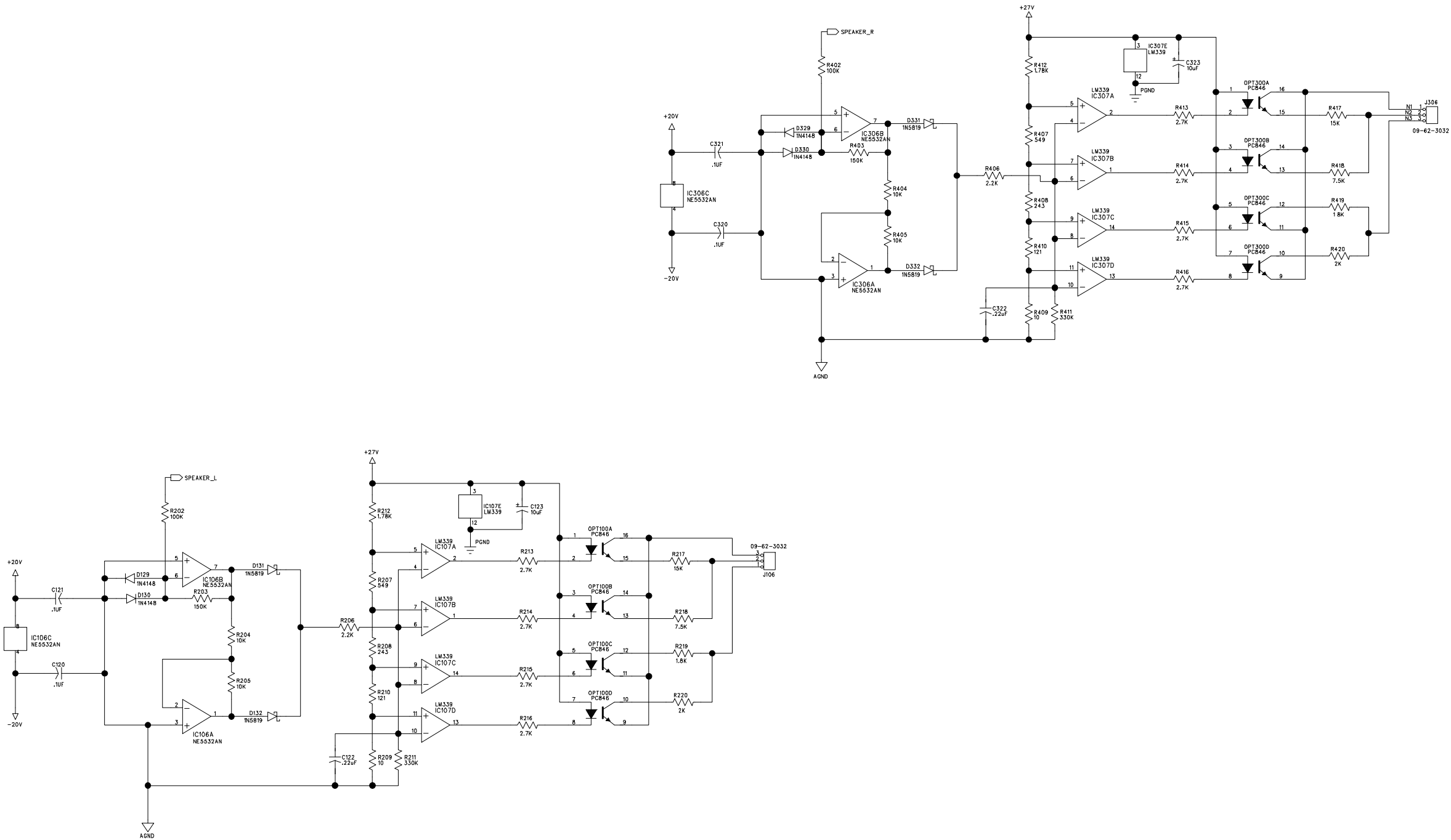
4

3

2

1

REVISION RECORD			
LTR	ECO NO:	APPROVED:	DATE:



TITLE:
HI-POWER CKS/CKV PREAMP (SLIDE "I" SECTION)
(CHANNEL A & B)

DRAWN: LAP	DATED: 8/95
CHECKED:	DATED:
QUALITY CONTROL:	DATED:
RELEASED:	DATED:

CODE:	SIZE: D	DRAWING NO: 21D2508	REV 04
SCALE:		SHEET: 3 OF 5	

6

5

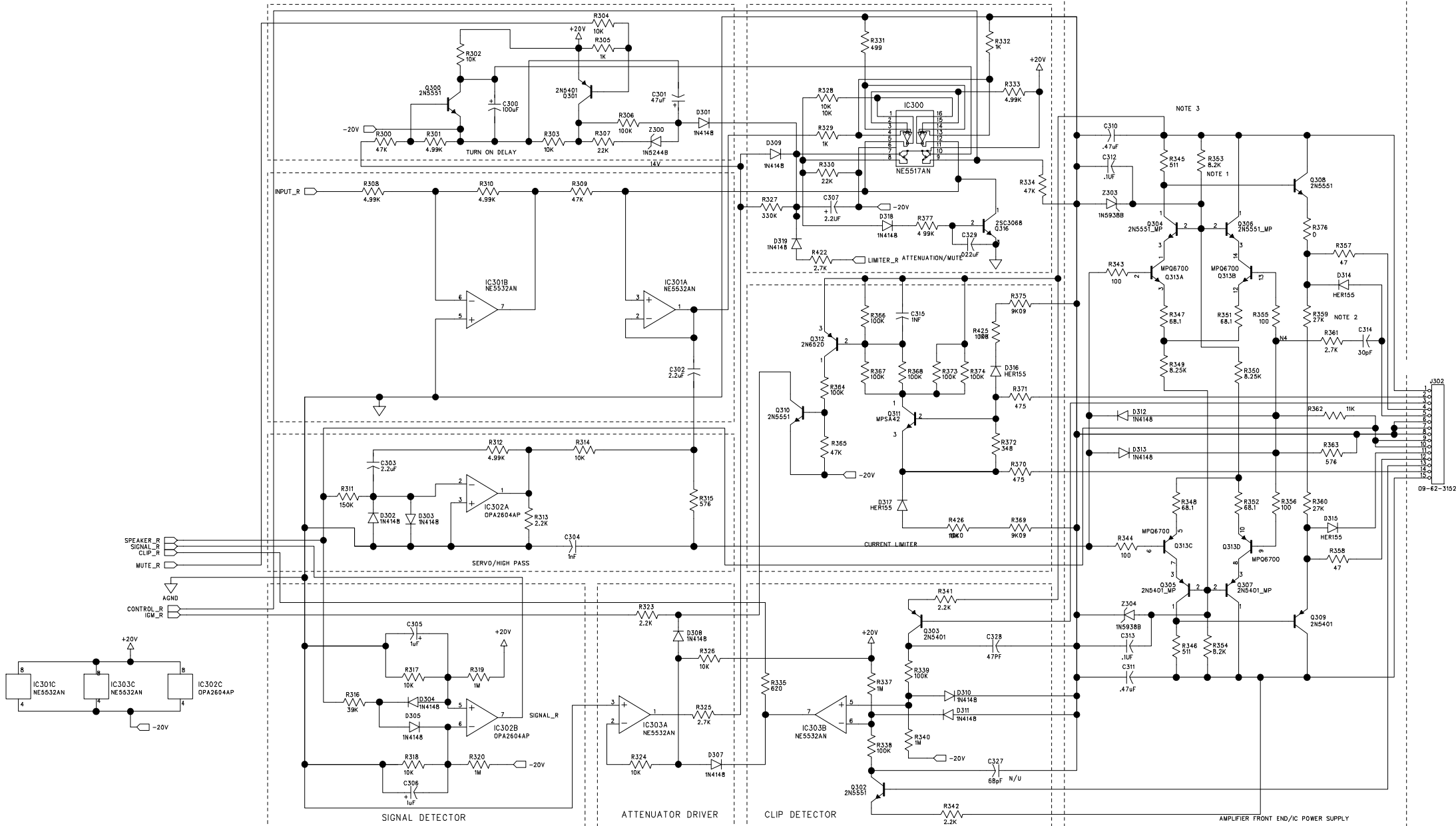
4

3

2

1

REVISION RECORD			
LTR	ECO NO:	APPROVED:	DATE:



TITLE: HI-POWER CKS/CKV PREAMP (FRONTEND SECTION) (CHANNEL B)			
CODE:	SIZE:D	DRAWING NO: 21D2508	REV 04
SCALE:		SHEET: 4 OF 5	

DRAWN: LAP	DATED: 8/95
CHECKED:	DATED:
QUALITY CONTROL:	DATED:
RELEASED:	DATED:

6

5

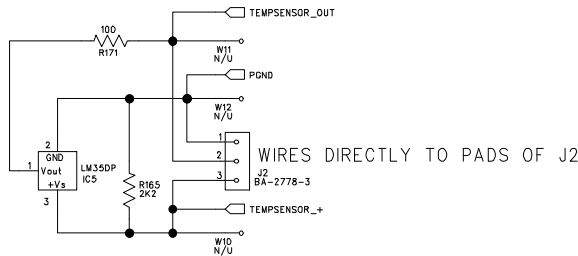
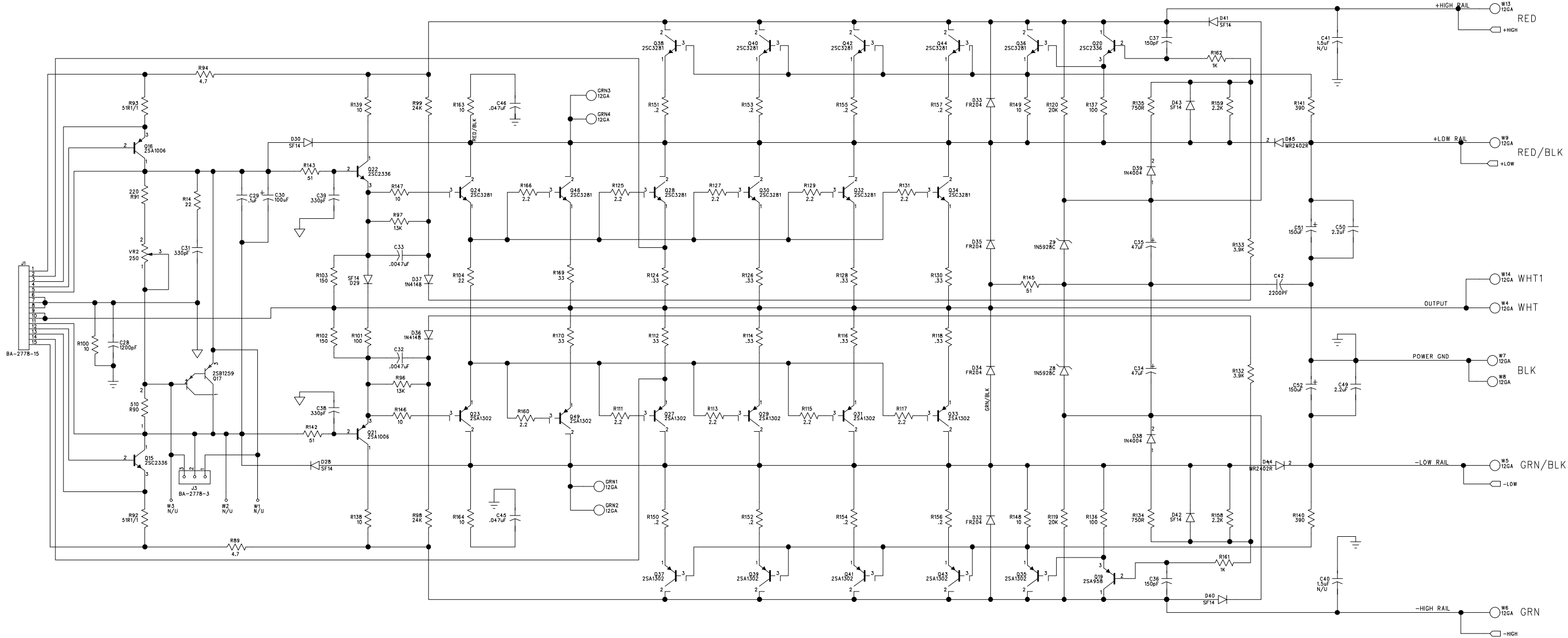
4

3

2

1

REVISION RECORD			
LTR	ECO NO:	APPROVED:	DATE:

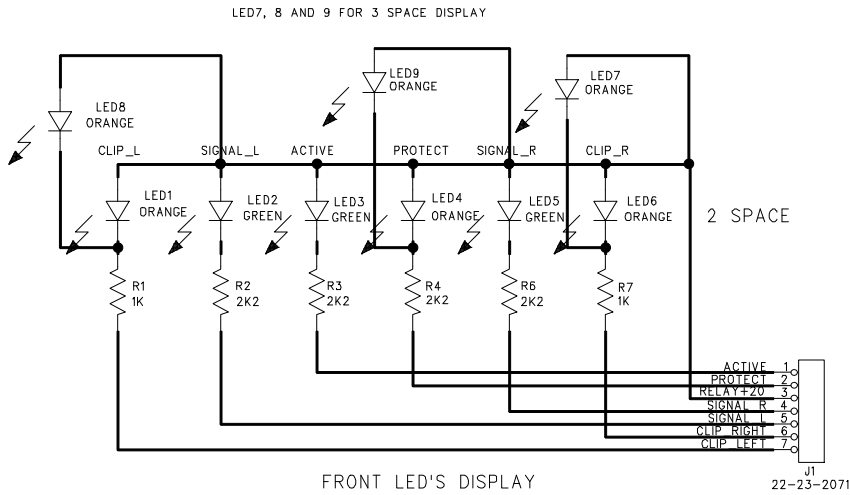
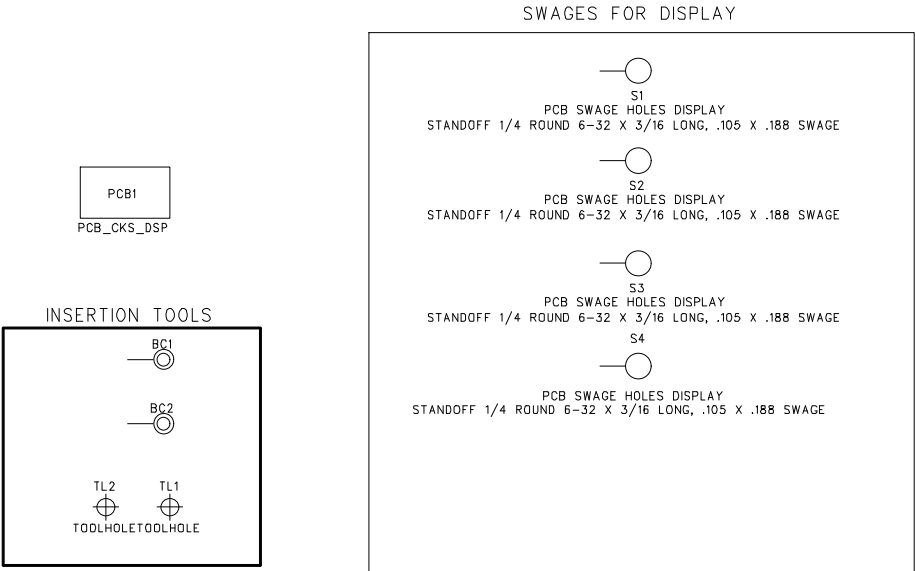



CREST AUDIO

TITLE:
HI PWR CKS/CKV OUTPUT MODULE
4 SPACE AMPLIFIER

DRAWN:		DATED: 8/15/94		HI PWR CRK/CRV OUTPUT MODULE 4 SPACE AMPLIFIER	
CHECKED:	DATED:	CODE:	SIZE: D	DRAWING NO: 2513-03	REV: 3
QUALITY CONTROL:	DATED:				
RELEASED:	DATED:	SCALE:			SHEET: 1 OF 2

REVISION RECORD			
LTR	ECO NO:	APPROVED:	DATE:



**CREST AUDIO**

TITLE:
CKS/CKX/CKV DISPLAY PC BOARD

CODE:	SIZE: C	DRAWING NO: 21C3946-A	REV: 00
SCALE:		SHEET: 1 of 1	

DRAWN:	DATED:
CHECKED:	DATED:
QUALITY CONTROL:	DATED:
RELEASED:	DATED:

6

5

4

3

2

1

D

D

C

C

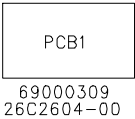
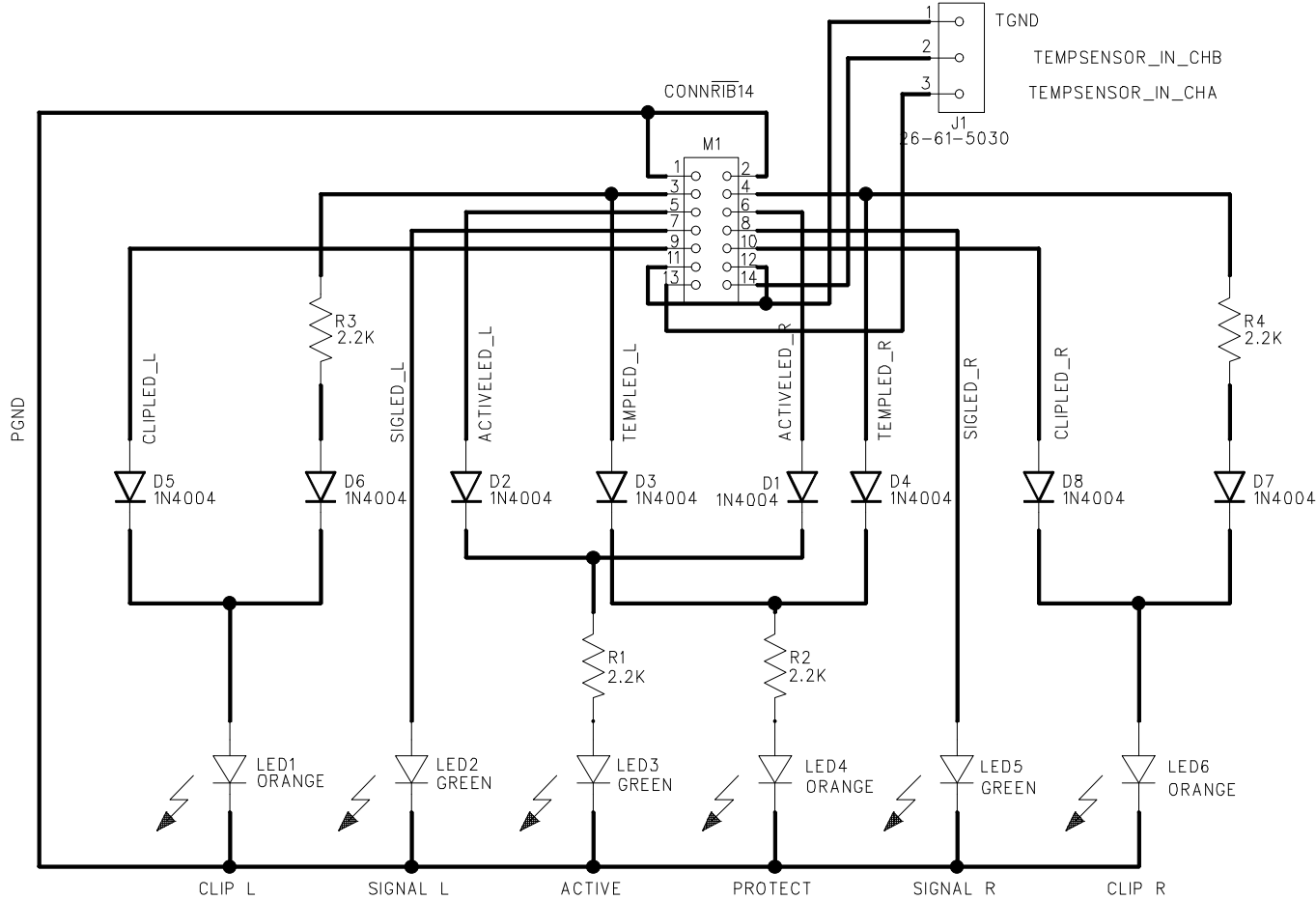
B

B

A

A

REVISION RECORD			
LTR	ECO NO:	APPROVED:	DATE:



COMPANY: CREST AUDIO			
TITLE: HI-POWER CKS/CKV DISPLAY 4 SPACE AMP			
CODE:	SIZE:	DRAWING NO: 2604-00	REV: 0
SCALE:			SHEET: 1 OF 1

DRAWN:	DATED:
CHECKED:	DATED:
QUALITY CONTROL:	DATED:
RELEASED:	DATED:

