



Schematic set

LT Series LT100, LT1500 & LT2000

1/25/01

1. Display and input connections
2. Linear power supply
3. Switching output section, p. 1
4. Switching output section, p. 2

6

5

4

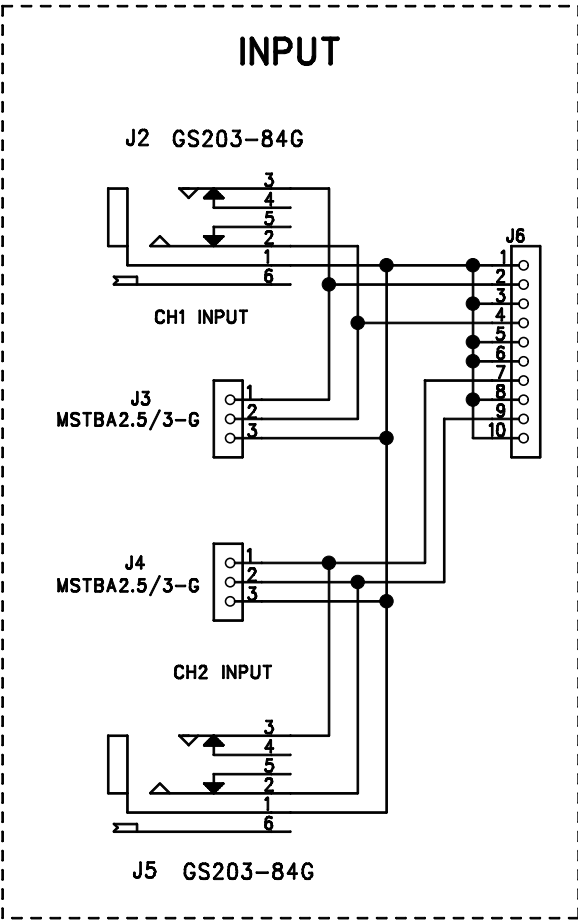
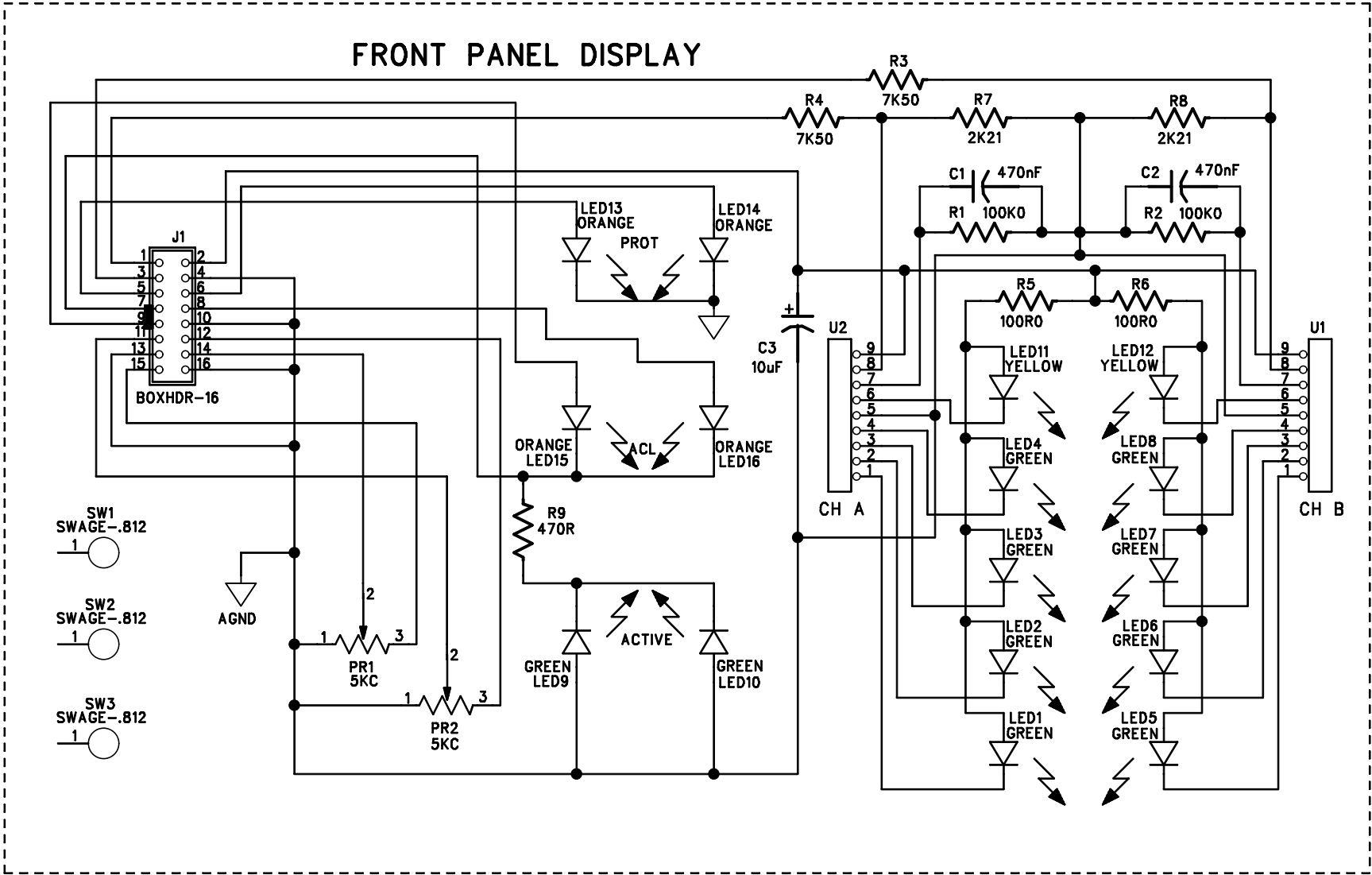
3

2

1

REVISION RECORD			
LTR	ECO NO:	APPROVED:	DATE:

DC01776 6-19-00 CHANGED PCB REV TO B



PCB1 69000474 26B4777-B	LS1 LEDSP/.63	LS6 LEDSP/.63	LS11 LEDSP/.63	LS16 LEDSP/.63
	LS2 LEDSP/.63	LS7 LEDSP/.63	LS12 LEDSP/.63	
	LS3 LEDSP/.63	LS8 LEDSP/.63	LS13 LEDSP/.63	
	LS4 LEDSP/.63	LS9 LEDSP/.63	LS14 LEDSP/.63	
	LS5 LEDSP/.63	LS10 LEDSP/.63	LS15 LEDSP/.63	
				TH1 TOOLHOLE
				TH2 TOOLHOLE

COMPANY:			
TITLE:			
LT/ST DISPLAY AND AUX INPUT			
CODE:	SIZE:	DRAWING NO:	REV:
		21B4777	A
SCALE:		SHEET: OF	

DRAWN:	BE	DATED:	4/12/00
CHECKED:		DATED:	
QUALITY CONTROL:		DATED:	
RELEASED:		DATED:	

6

5

4

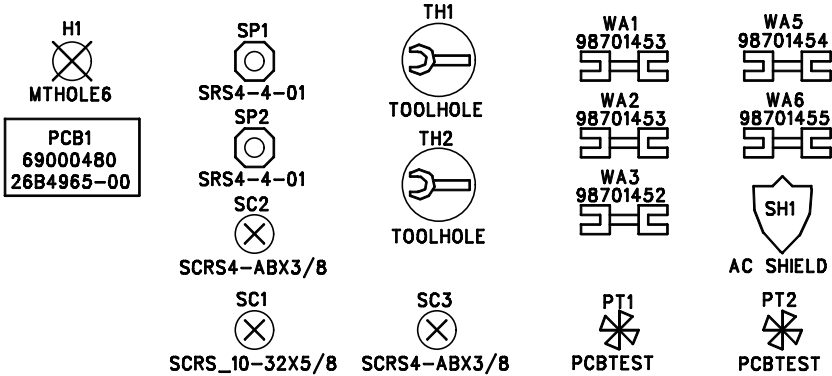
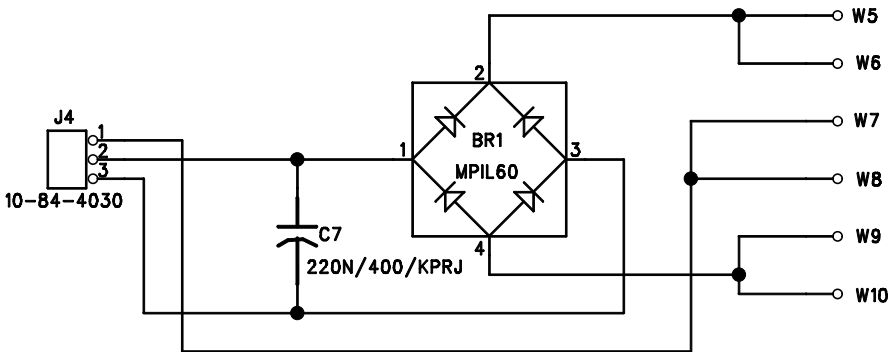
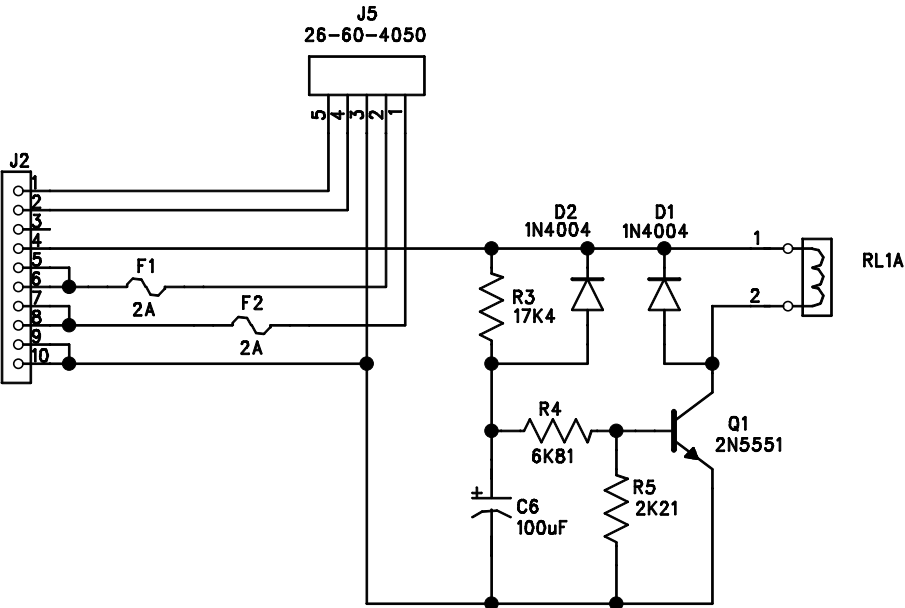
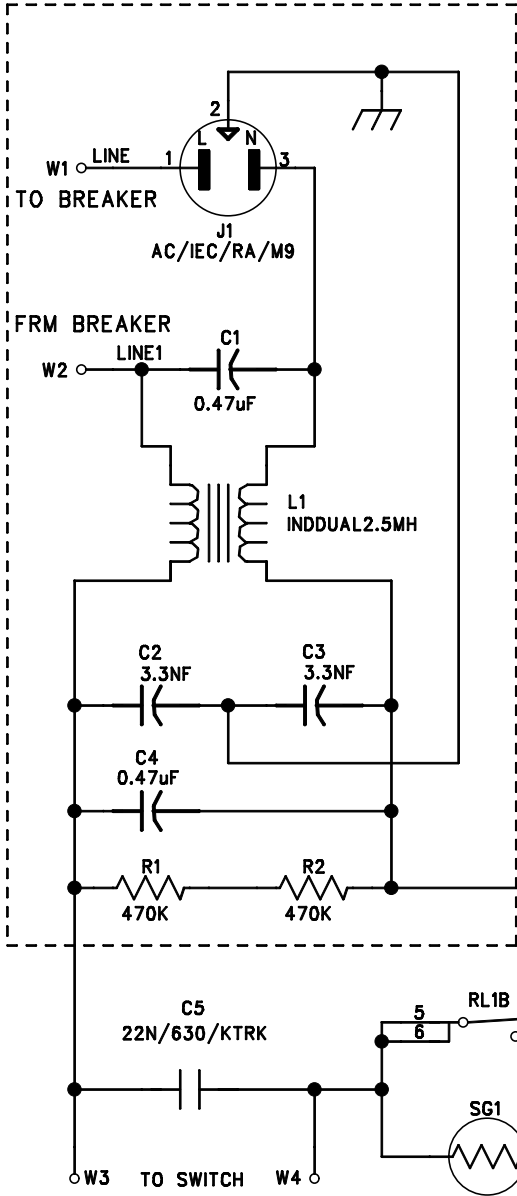
3

2

1

REVISION RECORD			
LTR	ECO NO:	APPROVED:	DATE:

DC01176 PCB to Rev B Deleted R6 0 ohm resistor



This schematic was formerly 4776-01

COMPANY: CREST AUDIO			
TITLE: LT LINEAR POWER SUPPLY			
CODE:	SIZE:	DRAWING NO: 21B4965	REV: 00
SCALE:			SHEET: 1 OF 1

DRAWN: BE	DATED: 12/04/00
CHECKED:	DATED:
QUALITY CONTROL:	DATED:
RELEASED:	DATED:

6

5

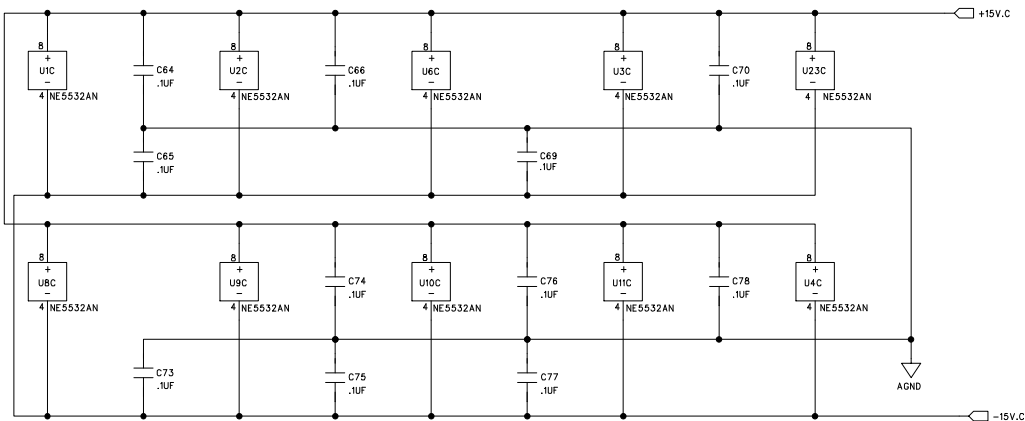
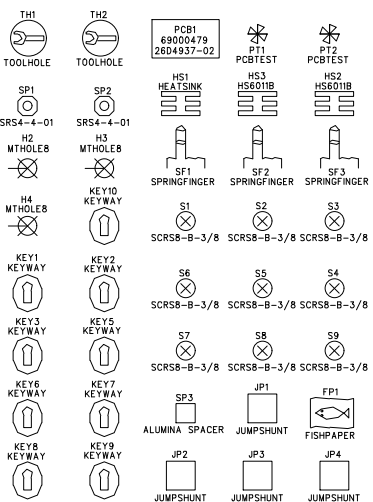
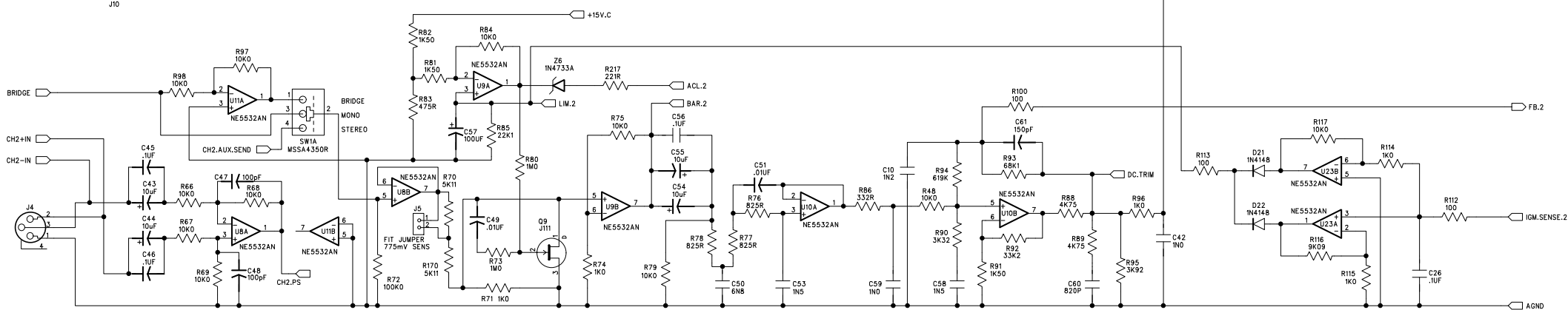
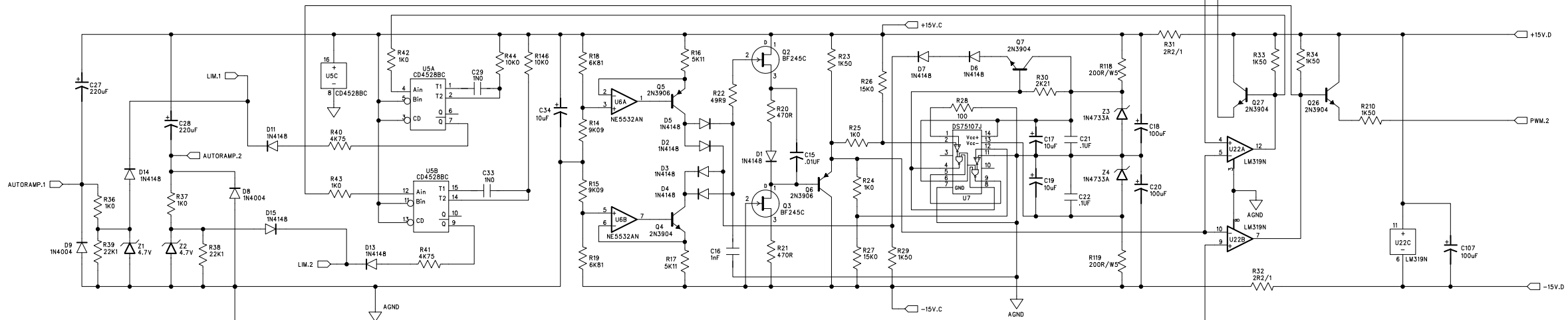
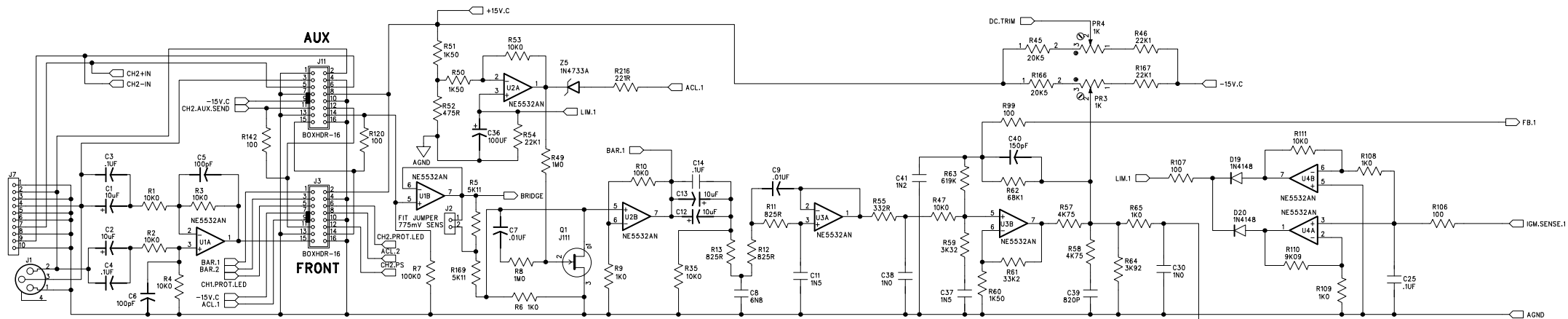
4

3

2

1

REVISION RECORD			
LTR	ECO NO:	APPROVED:	DATE:



MODEL DEPENDENT PARTS 98701557

MODEL	R110, 116	R111,117	R47, 48	C99, 102, 124, 126	C100, 101, 123, 125	R140, 161
LT/ST 1000 98701567	13K7 (735-37)	15K0 (735-119)	15K0 (735-119)	4700UF 100V (18-126)		475R (735-178)
LT/ST 1500 98701568	11K8 (735-338)	12K7 (735-79)	12K7 (735-79)	4700UF 100V (18-126)	4700UF 100V (18-126)	475R (735-178)
LT/ST 2000 98701569	9K09 (735-304)	10K0 (735-36)	10K0 (735-36)	4700UF 125V (18-136)	4700UF 125V (18-136)	681R (735-65)

CREST AUDIO

TITLE:

LT/ST SWITCHING AMPLIFIER

DRAWN:
CSDATED:
9-00

CHECKED:

DATED:

QUALITY CONTROL:

DATED:

RELEASED:

DATED:

CODE:

SIZE:

DRAWING NO:

REV:

21D4937

02

SCALE:

SHEET: 1 OF 2

6

5

4

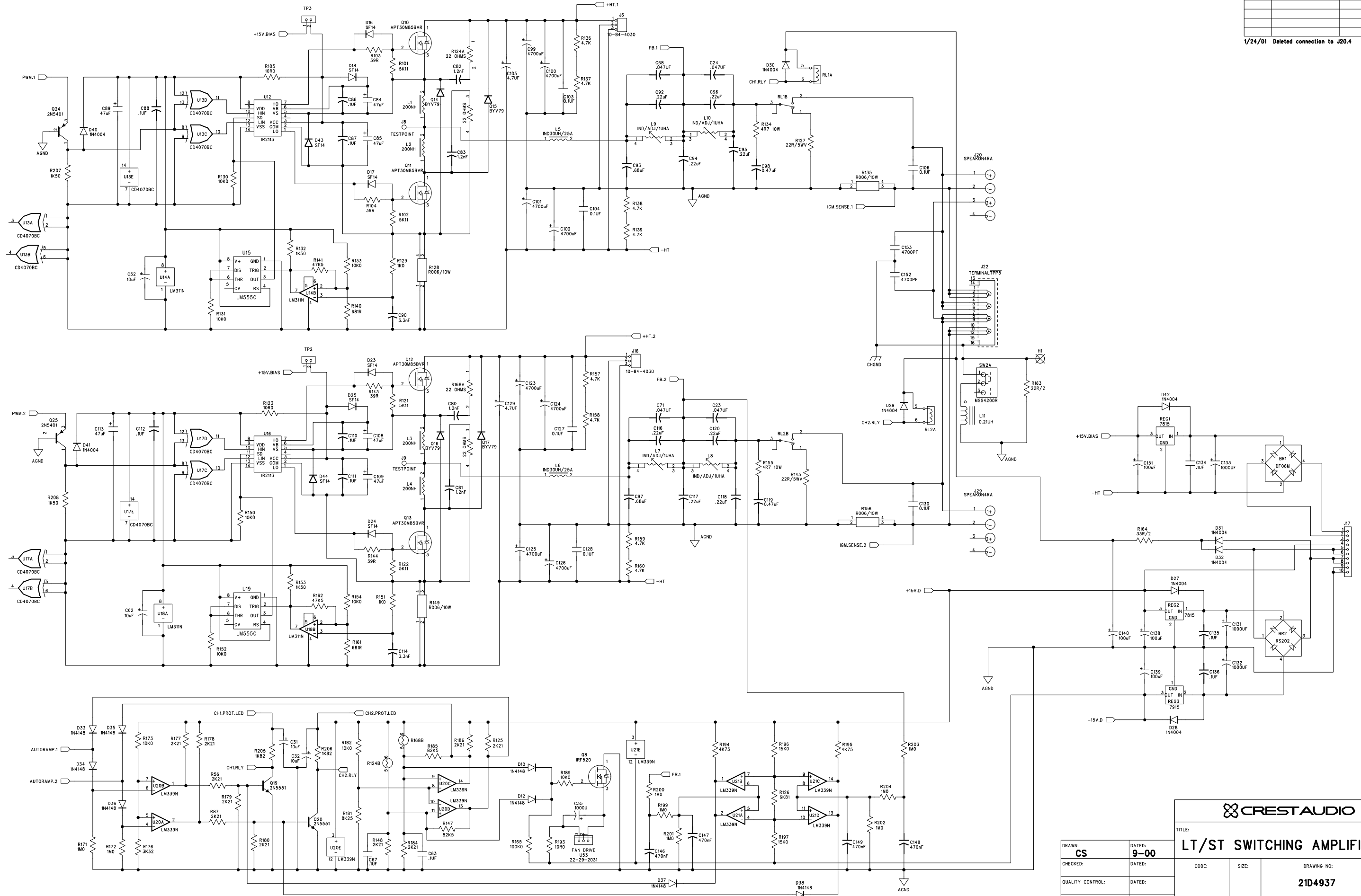
3

2

1

REVISION RECORD			
LTR	ECO NO:	APPROVED:	DATE:

1/24/01 Deleted connection to J20.4



CREST AUDIO

TITLE:

LT/ST SWITCHING AMPLIFIER

DRAWN: CS

DATED: 9-00

CHECKED:

DATED:

QUALITY CONTROL:

DATED:

RELEASED:

DATED:

CODE:

SIZE:

DRAWING NO:

REV:

21D4937

02

SCALE:

SHEET: 2 OF 2