

Ver. 1

## SERVICE MANUAL

# MODEL DN-X500

## DJ MIXER

### 注 意

サービスをおこなう前に、このサービスマニュアルを必ずお読みください。本機は、火災、感電、けがなどに対する安全性を確保するために、さまざまな配慮をおこなっており、また法的には「電気用品安全法」にもとづき、所定の許可を得て製造されております。従ってサービスをおこなう際は、これらの安全性が維持されるよう、このサービスマニュアルに記載されている注意事項を必ずお守りください。

- For purposes of improvement, specifications and design are subject to change without notice.

- 本機の仕様は性能改良のため、予告なく変更することがあります。
- 補修用性能部品の保有期間は、製造打切後 8年です。

- Please use this service manual with referring to the operating instructions without fail.

- 修理の際は、必ず取扱説明書を参照の上、作業を行ってください。

- Some illustrations using in this service manual are slightly different from the actual set.

- 本文中に使用しているイラストは、説明の都合上現物と多少異なる場合があります。

## D&M Holdings Inc.

Professional business company

JAPAN

## SAFETY PRECAUTIONS

The following check should be performed for the continued protection of the customer and service technician.

### LEAKAGE CURRENT CHECK

Before returning the unit to the customer, make sure you make either (1) a leakage current check or (2) a line to chassis resistance check. If the leakage current exceeds 0.5 milliamps, or if the resistance from chassis to either side of the power cord is less than 460 kohms, the unit is defective.

## 注意

サービス、点検時には次のことにご注意願います。

### ●注意事項をお守りください！

サービスのとき特に注意を必要とする個所については、キャビネット、部品、シャーシなどにラベルや捺印で、注意事項を表示しています。これらの注意書きおよび取扱説明書などの注意事項を必ずお守りください。

### ●感電に注意！

(1)このセットは、交流電圧が印加されていますので、通電時に内部金属部に触れると感電することがあります。従って通電サービス時には、絶縁トランスの使用や手袋の着用、部品交換には、電源プラグを抜くなどして、感電にご注意ください。

(2)内部には、高電圧の部分がありますので、通電時の取扱には、十分ご注意ください。

### ●指定部品の使用！

セットの部品は難燃性や耐電圧など安全上の特性を持ったものとなっています。従って交換部品は、使用されていたものと同じ特性の部品を使用してください。特に配線図、部品表に△印で指定されている安全上重要な部品は必ず指定のものをご使用ください。

### ●部品の取付けや配線の引きまわしは、元どおりに！

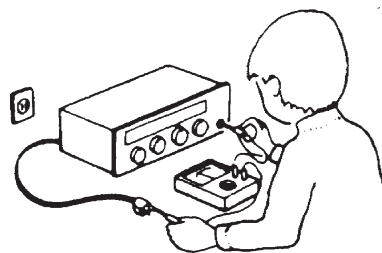
安全上、テープやチューブなどの絶縁材料を使用したり、プリント基板から浮かして取付けた部品があります。また内部配線は引きまわしやクランプによって発熱部品や高圧部品に接近しないように配慮されていますので、これらは必ず元どおりにしてください。

### ●サービス後は安全点検を！

サービスのために取り外したねじ、部品、配線などが元どおりになっているか、またサービスした個所の周辺を劣化させてしまったところがないかなどを点検し、外部金属端子部と、電源プラグの刃の間の絶縁チェックをおこなうなど、安全性が確保されていることを確認してください。

(絶縁チェックの方法)

電源コンセントから電源プラグを抜き、アンテナや、プラグなどを外し、電源スイッチを入れます。500V絶縁抵抗計を用いて、電源プラグのそれぞれの端子と、外部露出金属部〔アンテナ端子、ヘッドホン端子、マイク端子、入力端子など〕との間で、絶縁抵抗値が1MΩ以上であること、この値以下のときは、セットの点検修理が必要です。



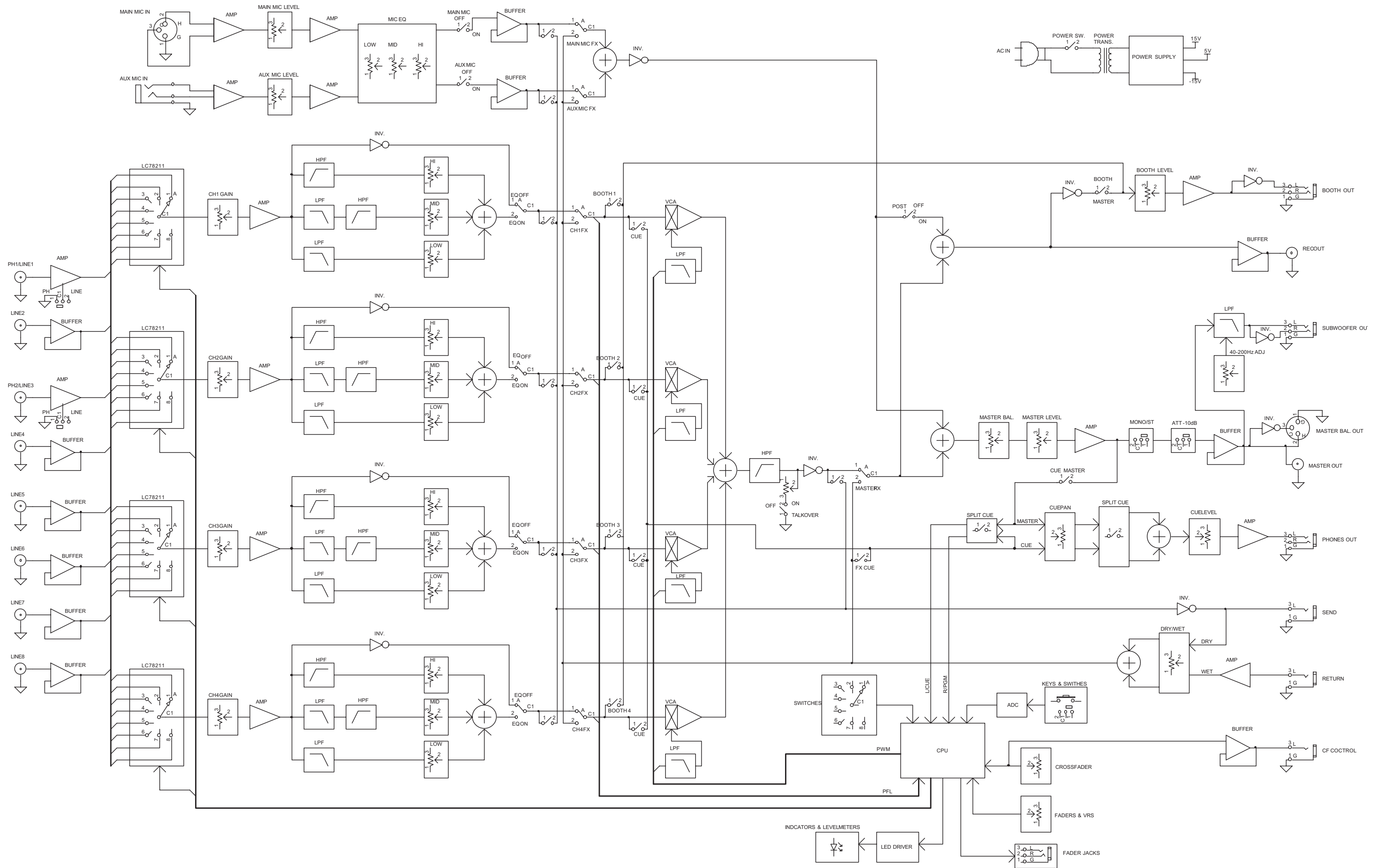
## 注意 安全上重要な部品について

本機に使用している多くの電気部品、および機構部品は安全上、特別な特性を持っています。この特性はほとんどの場合、外観では判別つきにくく、また、もとの部品より高い定格（定格電力、耐圧）を持ったものを使用しても安全性が維持されるとは、限りません。安全上の特性を持った部品は、このサービスマニュアルの配線図、部品表に次のように表示していますので、必ず指定されている部品番号のものを使用願います。

(1) 配線図… △マークで表示しています。

(2) 部品表… △マークで表示しています。

指定された部品と異なるものを使用した場合には、感電、火災などの危険を生じる恐れがあります。



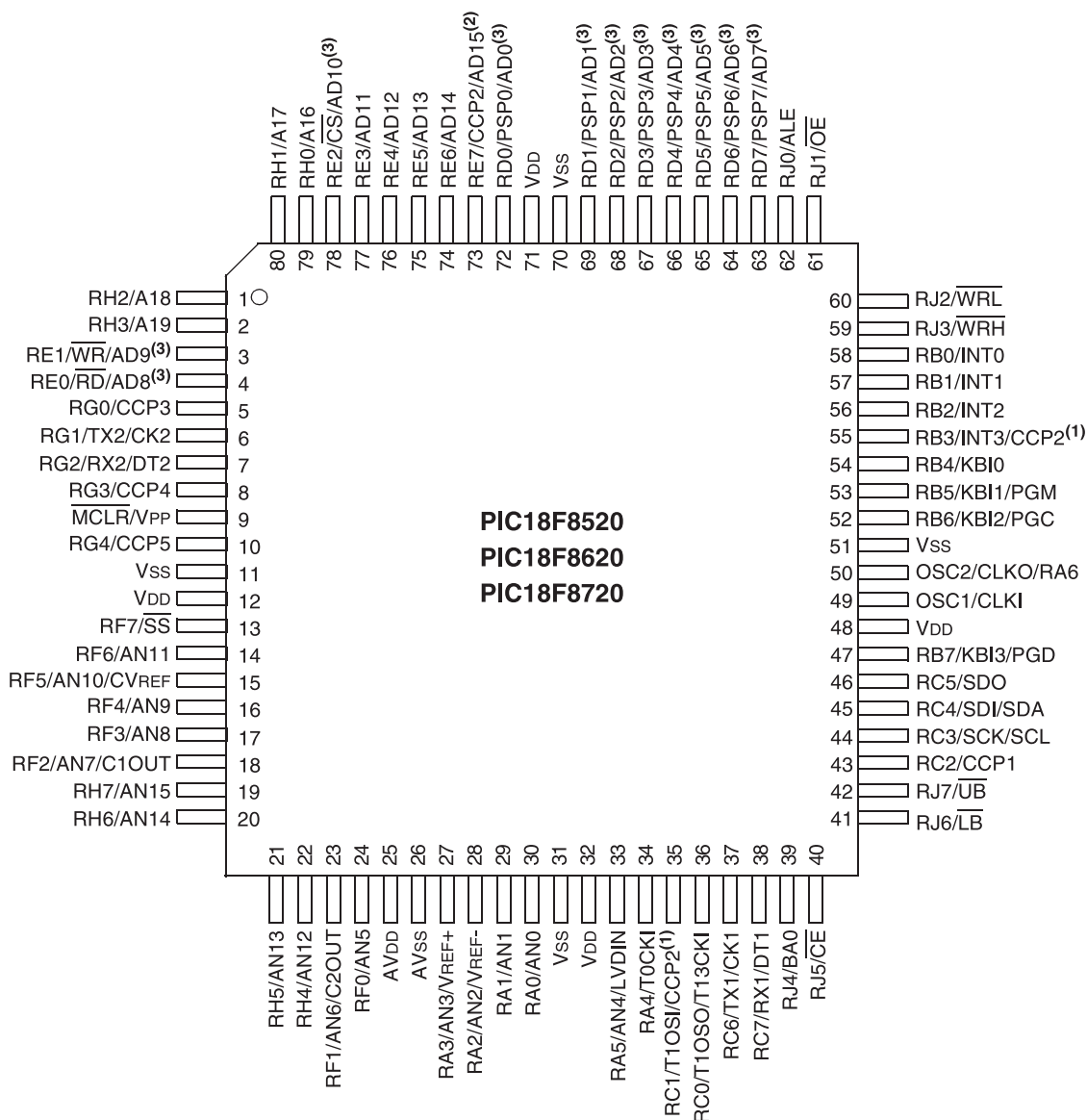
## SEMICONDUCTORS

Only major semiconductors are shown, general semiconductors etc. are omitted to list.

主な半導体を記載しています。汎用の半導体は記載を省略しています。

### IC's

#### PIC18F8520-I/PTG (IC801)

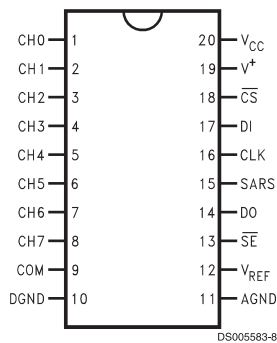


- Note**
- 1: CCP2 is multiplexed with RC1 when CCP2MX is set.
  - 2: CCP2 is multiplexed by default with RE7 when the device is configured in Microcontroller mode.
  - 3: PSP is available only in Microcontroller mode.

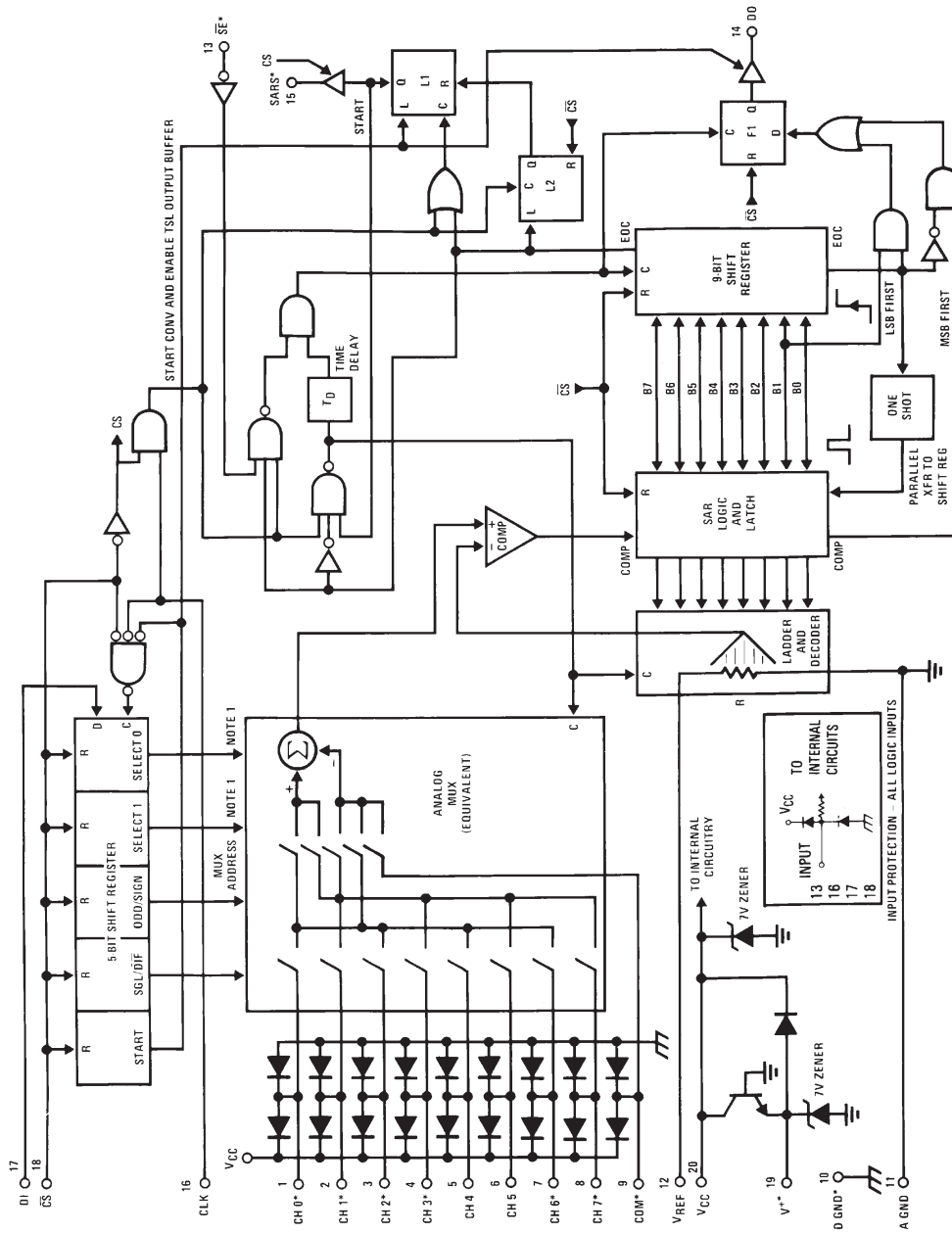
## PIC18F8520-I/PTG Terminal Function

Pin No.	Pin Name	I/O	Function
1	OE	O	74HC595 CONTROL PIN
2	DS	O	74HC595 CONTROL PIN
3	CH FS	I	CH FADER START SW INPUT
4	CF FSA	I	CROSS FADER START A SW INPUT
5	PWM1	O	CH 1 Vocal CONTROL
6	CF FSB	I	CROSS FADER START B SW INPUT
7	ASSIGN4A	I	CH4 CROSS FADER ASSIGN(A,POST,B)
8	PWM2	O	CH 2 Vocal CONTROL
10	PWM3	O	CH 3 Vocal CONTROL
13	ASSIGN4B	I	CH4 CROSS FADER ASSIGN(A,POST,B)
14	CF	I	CROSS FADER VR A/D IN
15	INSEL4	I	CH4 INPUT ASSIGN A/D IN
16	CFC	I	CROSS FADER CONTOUR VR A/D IN
17	INSEL1	I	CH1 INPUT ASSIGN A/D IN
18	INSEL2	I	CH2 INPUT ASSIGN A/D IN
19	INSEL3	I	CH3 INPUT ASSIGN A/D IN
20	LML	I	MASTER L CH Level Meter A/D IN
21	LMR	I	MASTER R CH Level Meter A/D IN
22	LM1	I	CH1 Level Meter A/D IN
23	LM2	I	CH2 Level Meter A/D IN
24	LM3	I	CH3 Level Meter A/D IN
27	LM4	I	CH4 Level Meter A/D IN
28	F1	I	CH1 FADER VR A/D IN
29	F2	I	CH2 FADER VR A/D IN
30	F3	I	CH3 FADER VR A/D IN
33	F4	I	CH4 FADER VR A/D IN
34	CE1-1	O	LC78211,LC78212,LC78213 CONTROL PIN
35	PWM4	O	CH 4 Vocal CONTROL
36	CE2-2	O	LC78211,LC78212,LC78213 CONTROL PIN
37	DI-1	O	LC78211,LC78212,LC78213 CONTROL PIN
38	CL-1	O	LC78211,LC78212,LC78213 CONTROL PIN
39	-24	O	Level Meter LED CONTROL
40	-10	O	Level Meter LED CONTROL
41	-7	O	Level Meter LED CONTROL
42	-5	O	Level Meter LED CONTROL
43	-3	O	Level Meter LED CONTROL
44	-1	O	Level Meter LED CONTROL
45	0	O	Level Meter LED CONTROL
46	1	O	Level Meter LED CONTROL
47	3	O	Level Meter LED CONTROL
52	5	O	Level Meter LED CONTROL
53	8	O	Level Meter LED CONTROL
54	12	O	Level Meter LED CONTROL
55	CLMR	O	Level Meter LED CONTROL
56	CLML	O	Level Meter LED CONTROL
57	CLM4	O	Level Meter LED CONTROL
58	CLM3	O	Level Meter LED CONTROL
59	CLM2	O	Level Meter LED CONTROL
60	CLM1	O	Level Meter LED CONTROL
61	INT'	I	CS8405A CONTROL PIN
62	CDOUT'	I	IC DATA OUT
63	CDIN'	O	IC DATA IN
64	CCLK'	O	IC CLK
65	JDET	I	EFFECT SEND/RETURN INPUT SW
66	/CS'	O	CS8405A SELECTION PIN
67	PC4B'	O	LINE8 FADER CONTROL OUTPUT
68	PC4A'	O	LINE8 FADER CONTROL OUTPUT
69	PC3B	O	LINE6 FADER CONTROL OUTPUT
72	PC3A'	O	LINE6 FADER CONTROL OUTPUT
73	PC2B'	O	LINE4 FADER CONTROL OUTPUT
74	PC2A'	O	LINE4 FADER CONTROL OUTPUT
75	PC1B'	O	LINE2 FADER CONTROL OUTPUT
76	PC1A'	O	LINE2 FADER CONTROL OUTPUT
77	/CSAD	O	ADC0838 SELECTION PIN
79	SHCP	O	74HC595 CONTROL PIN
80	STCP	O	74HC595 CONTROL PIN

# ADC0838CCWM (IC 802)



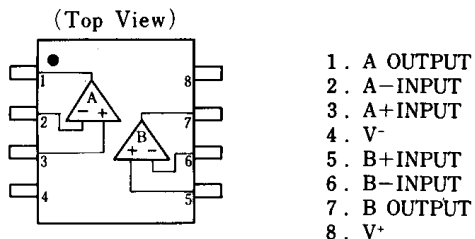
## ADC0838 Functional Block Diagram



DS005583-7

\*Some of these functions/pins are not available with other options.  
**Note 1:** For the ADC0834, D1 is input directly to the D input of SELECT 1. SELECT 0 is forced to a "1". For the ADC0832, DI is input directly to the DI input of ODD/SIGN. SELECT 0 is forced to a "0" and SELECT 1 is forced to a "1".

**NJM-4556AD (IC617) MIXER P.W.B.**



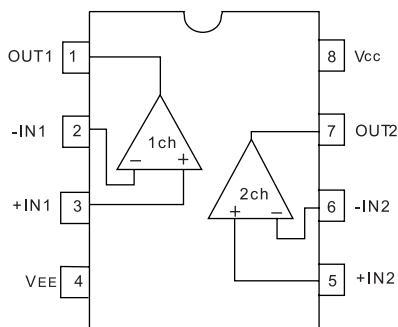
**BA15218F (IC 701) OUTPUT P.W.B.**

**(IC 704) BOOTH P.W.B.**

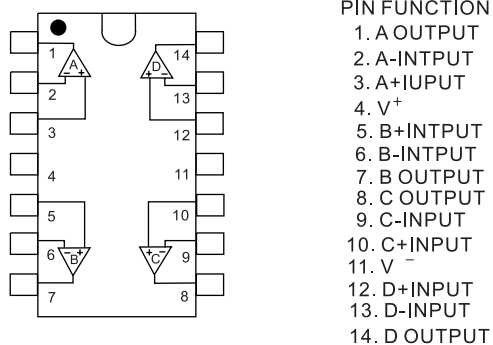
**(IC 603,901,902,908) POWER P.W.B.**

**(IC 104,204,304,404,501,502,606-609,609,611,616) MIXER P.W.B.**

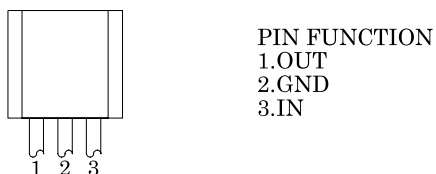
**(IC 503,601-603,605,610,612,613) CPU P.W.B.**



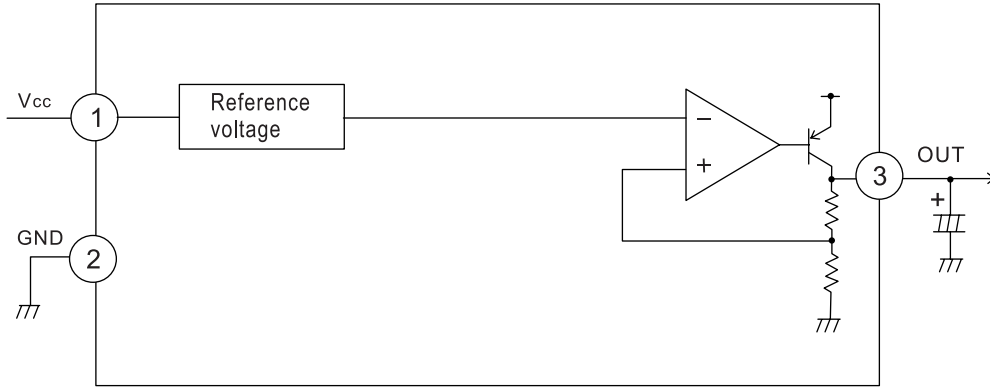
**NJM2058V (IC 504) CPU P.W.B.**



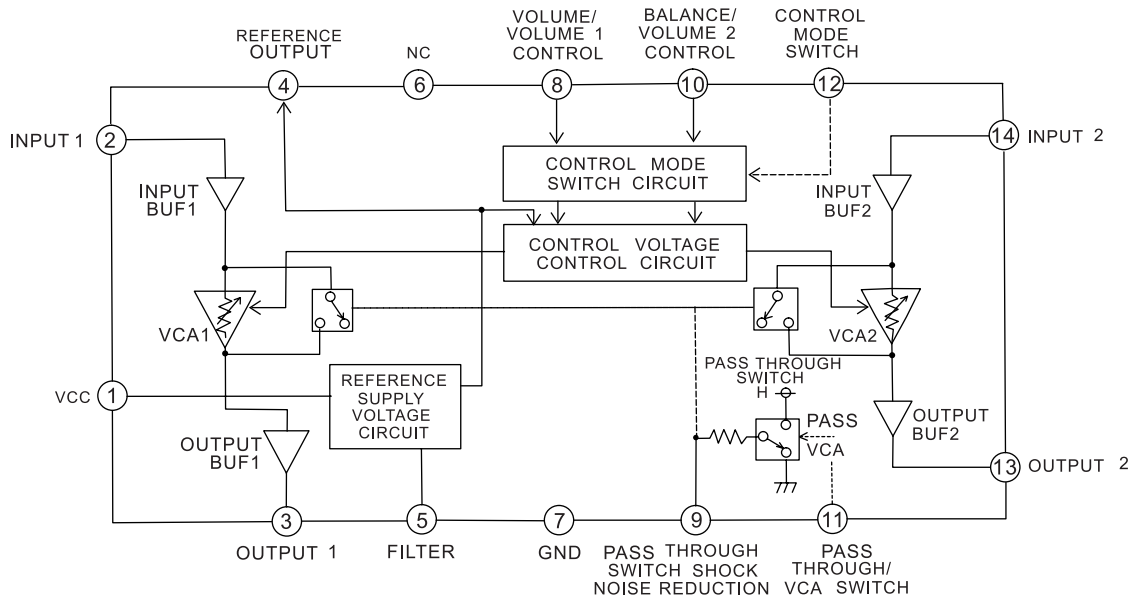
**NJM78L004 (IC 108) CPU P.W.B.**



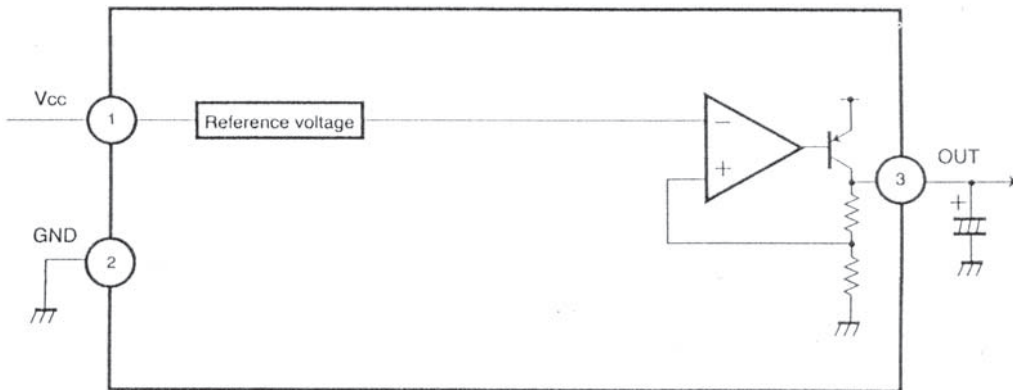
**BA05T (IC 03) POWER P.W.B.**



**M51132L (IC 106,206,306,406) CPU P.W.B.**

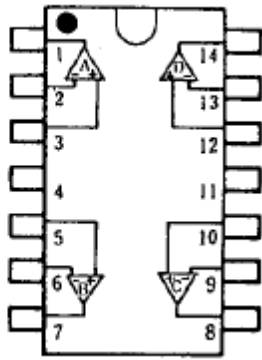


**BA033FP T0252-3 (IC 805) CPU P.W.B.**





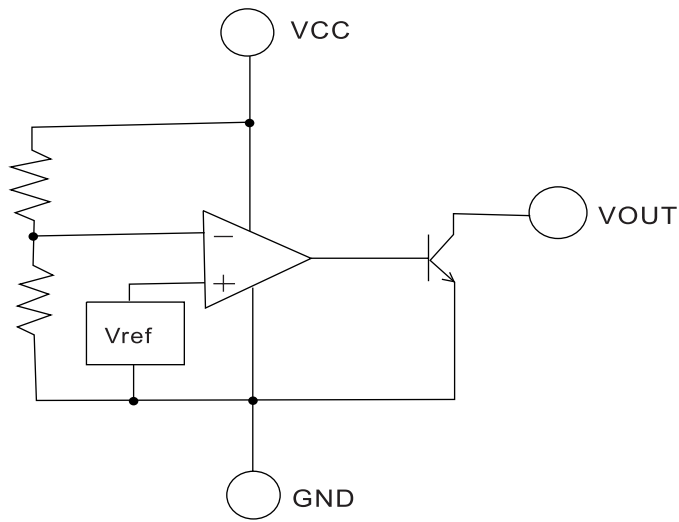
**NJM2060V (IC 101-103,201-203,301-303,401-403) MIXER P.W.B.**



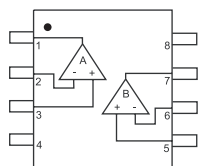
**PIN FUNCTION**

- |             |              |
|-------------|--------------|
| 1. A OUTPUT | 8. C OUTPUT  |
| 2. A-INPUT  | 9. C-INPUT   |
| 3. A+INPUT  | 10. C+INPUT  |
| 4. V+       | 11. V-       |
| 5. B+INPUT  | 12. D+INPUT  |
| 6. B-INPUT  | 13. D-INPUT  |
| 7. B OUTPUT | 14. D OUTPUT |

**BD4745G (IC 04) POWER P.W.B.**

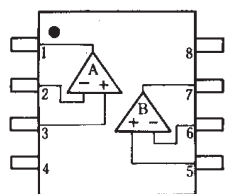


**NJM4558M-TE3 (IC 107,109,209,307,309,409) CPU P.W.B.**



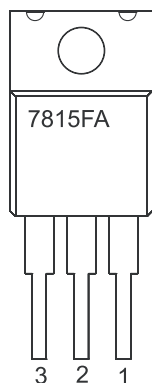
- PIN FUNCTION**
- 1. A OUTPUT
  - 2. A-INPOT
  - 3. A+INPUT
  - 4. V-
  - 5. B+INPUT
  - 6. B-INPOT
  - 7. B OUTPUT
  - 8. V+

**NJM2068M (IC 510) OUTPUT P.W.B.  
(IC 511) POWER P.W.B.**



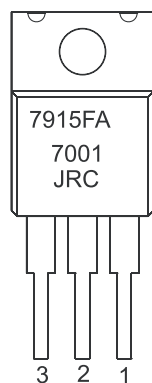
- 1 . A OUTPUT
- 2 . A-INPOT
- 3 . A+INPUT
- 4 . V-
- 5 . B+INPUT
- 6 . B-INPOT
- 7 . B OUTPUT
- 8 . V+

**NJM7815FA (IC 01) POWER P.W.B.**



- 1. OUTPUT
- 2. COMMON
- 3. INPUT

**NJM7915FA (IC 02) POWER P.W.B.**



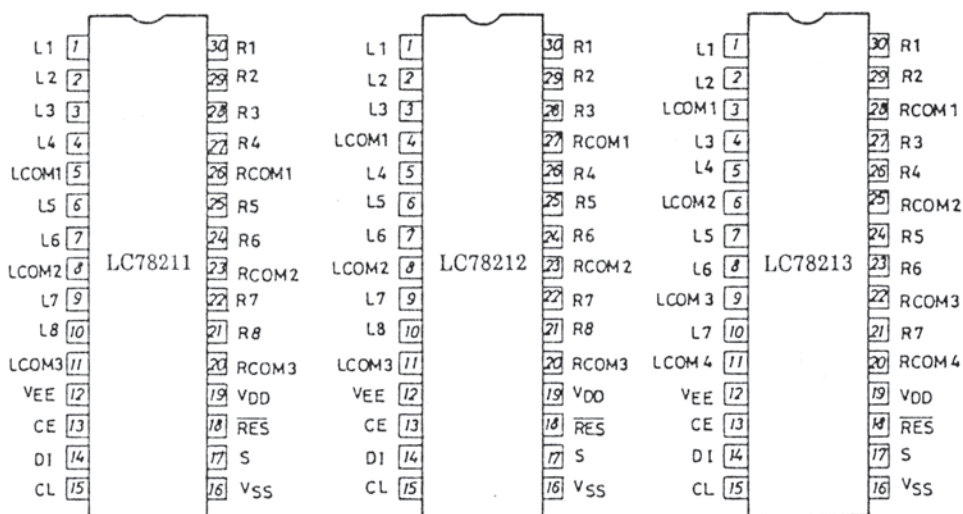
- 1. OUTPUT
- 2. INPUT
- 3. COMMON

LC78211 (IC 116,216,316,416) OUTPUT P.W.B.

LC78212 (IC 105,205,305,405) CPU P.W.B.

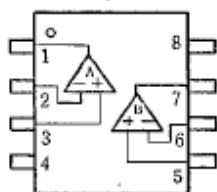
LC78213 (IC 117) OUTPUT P.W.B.

(IC 509,604,615) CPU P.W.B.



NJM4580M (IC 114,115,214,215,314,315,414,415) OUTPUT P.W.B.

NJM4580D (IC 703,705) OUTPUT P.W.B.

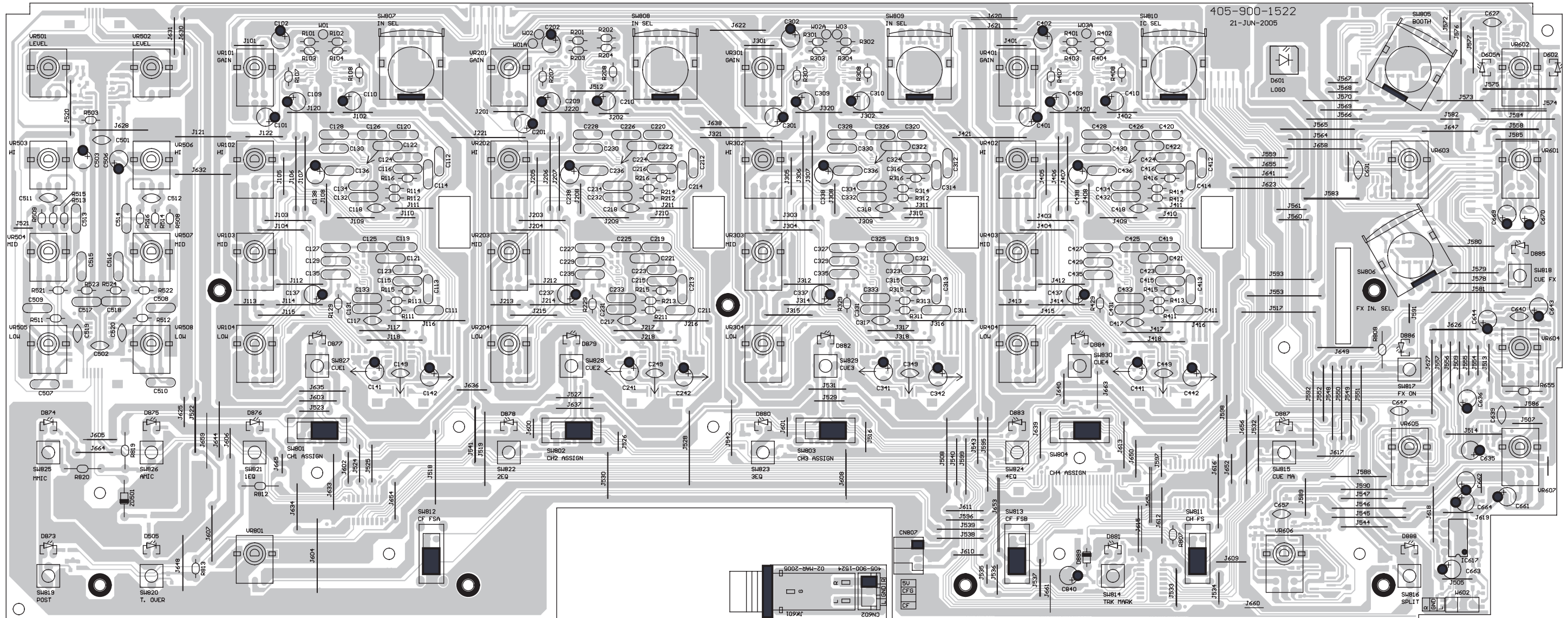


**PIN FUNCTION**

- 1. A OUTPUT
- 2. A -INPUT
- 3. A +INPUT
- 4. V<sup>-</sup>
- 5. B +INPUT
- 6. B -INPUT
- 7. B OUTPUT
- 8. V<sup>+</sup>

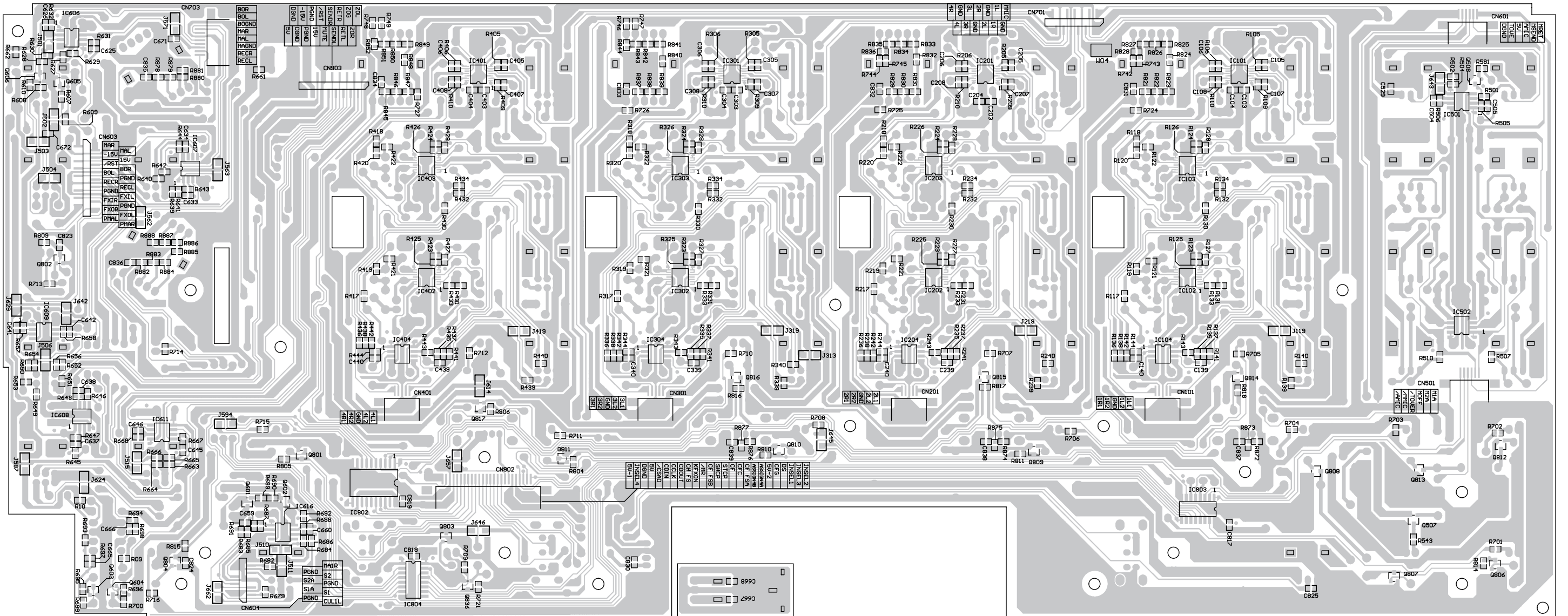
# PRINTED WIRING BOARDS

## MIXER & HEADPHONE Board (1/2)

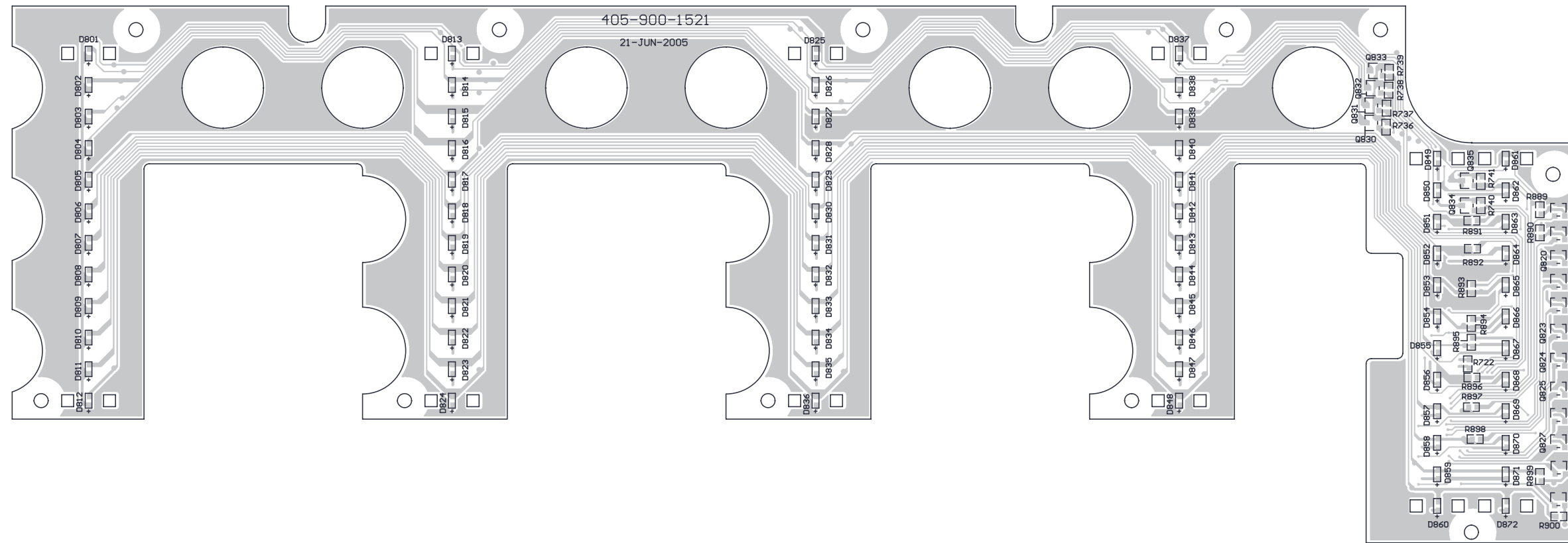


COMPONENT SIDE

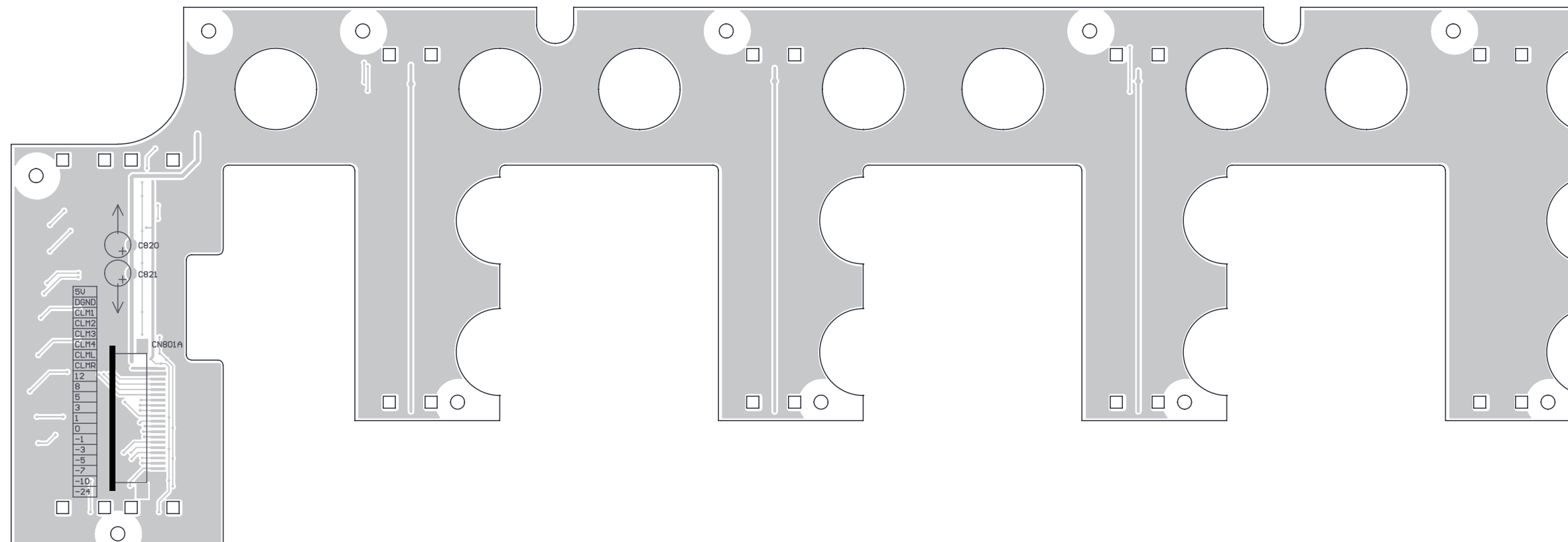
MIXER & HEADPHONE Board (2/2)



LEVER METER Board

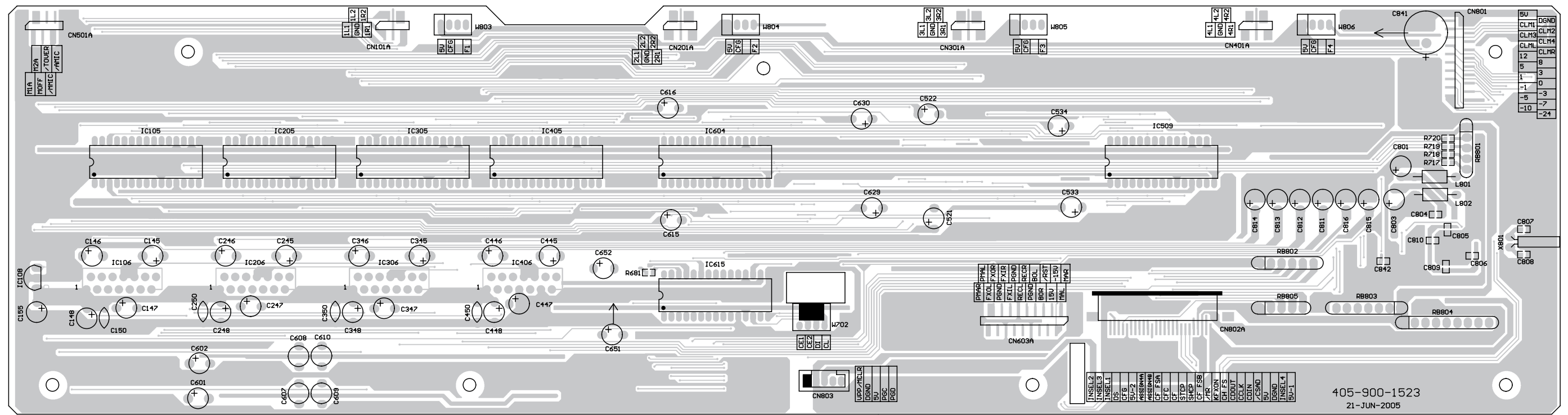


COMPONENT SIDE

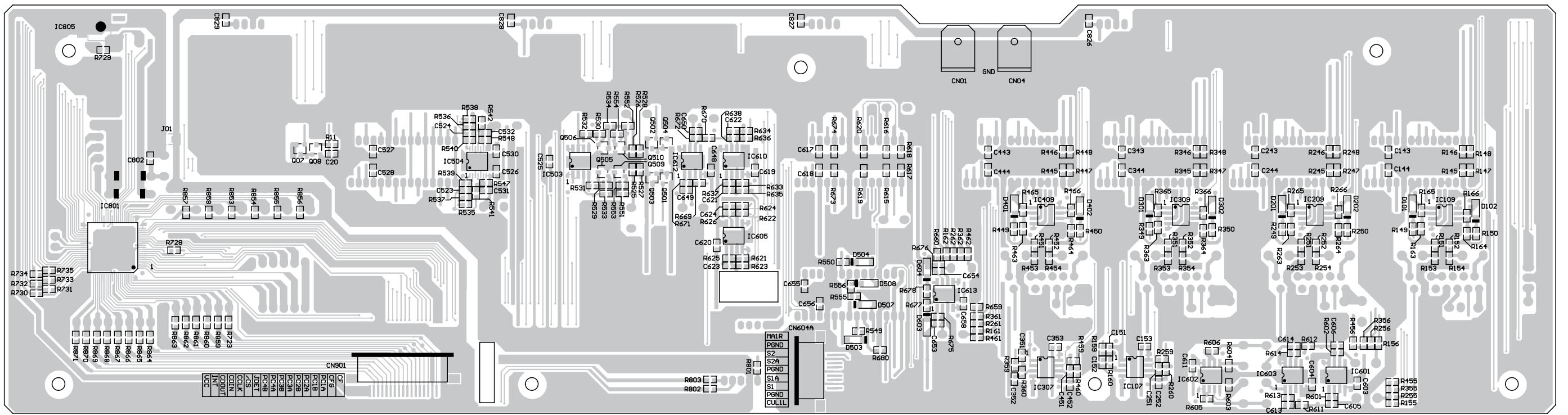


FOIL SIDE

# CPU Board

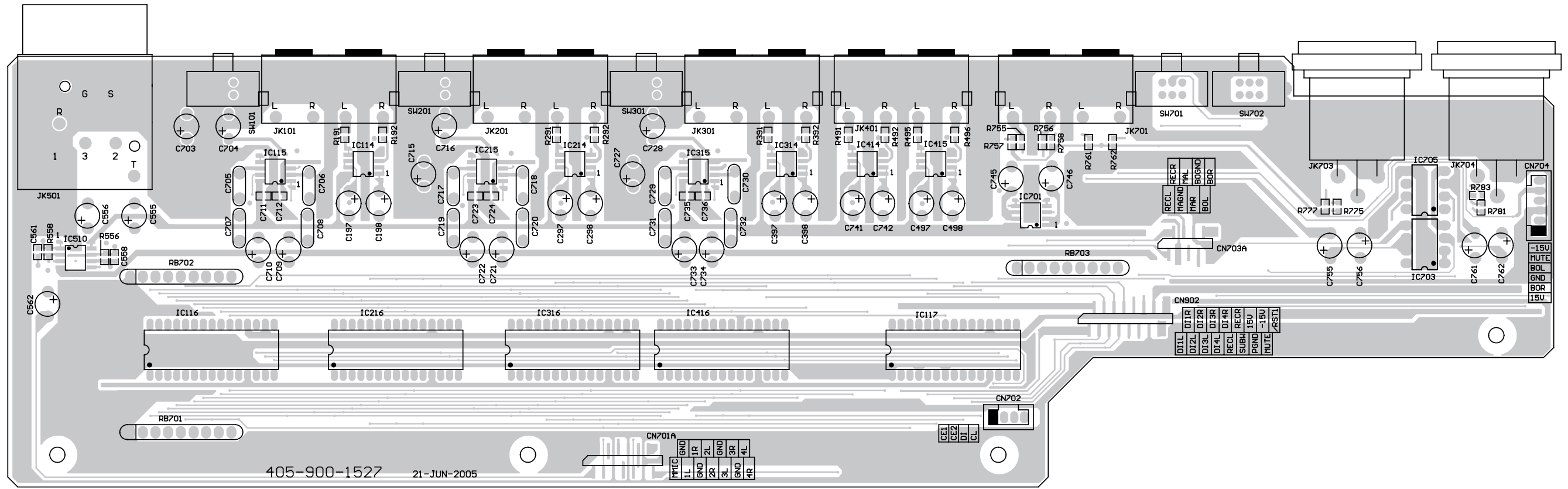


COMPONENT SIDE

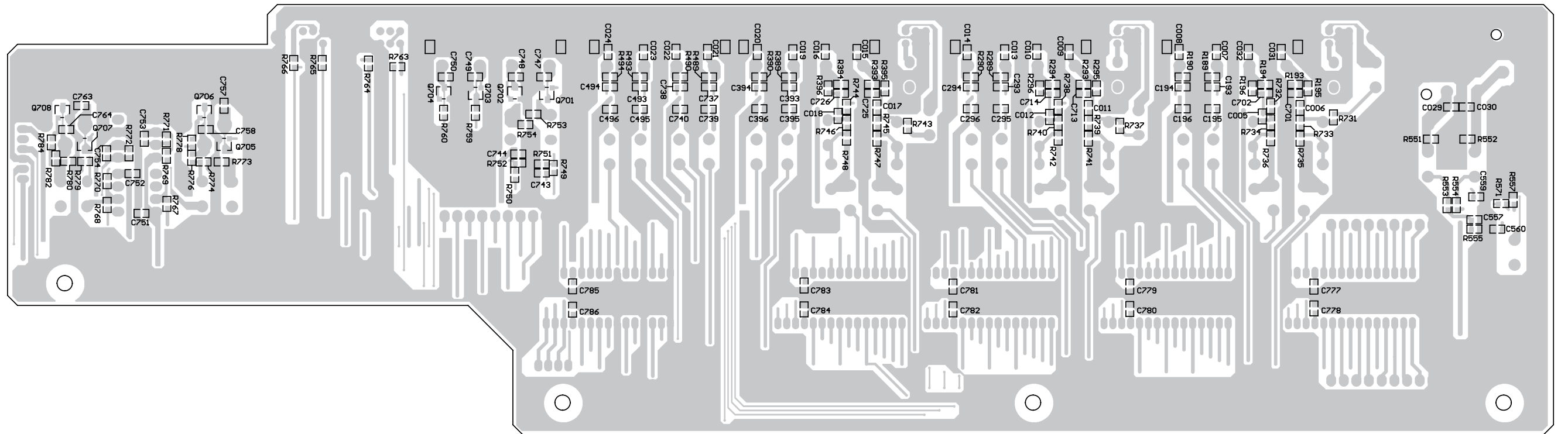


FOIL SIDE

IO Board



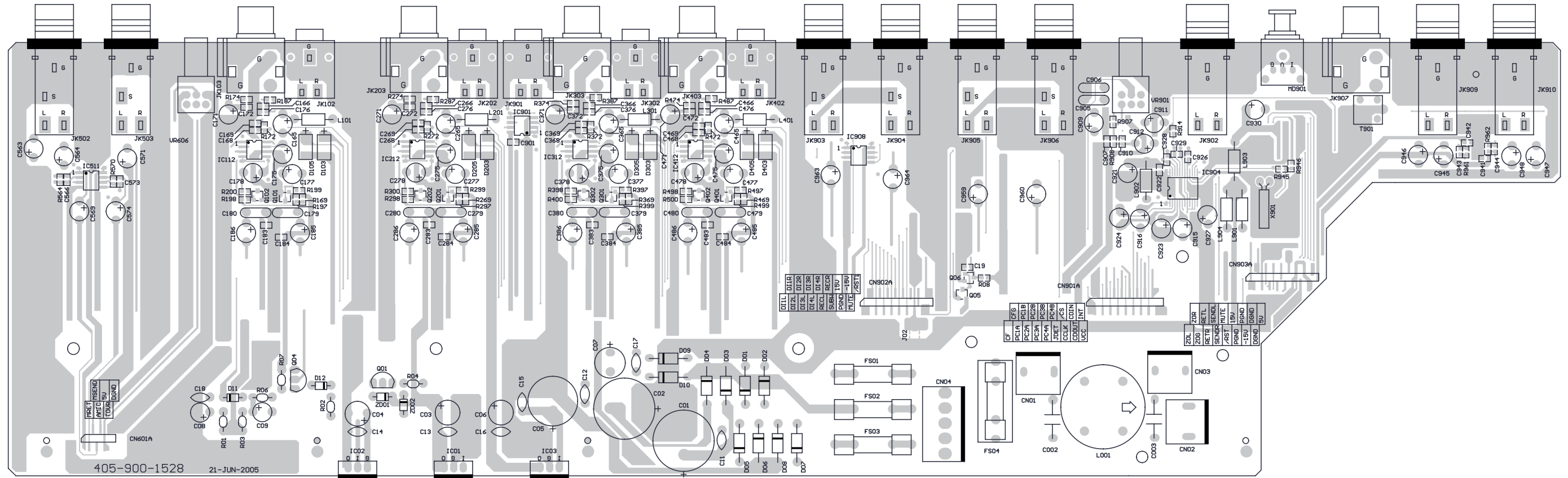
COMPONENT SIDE



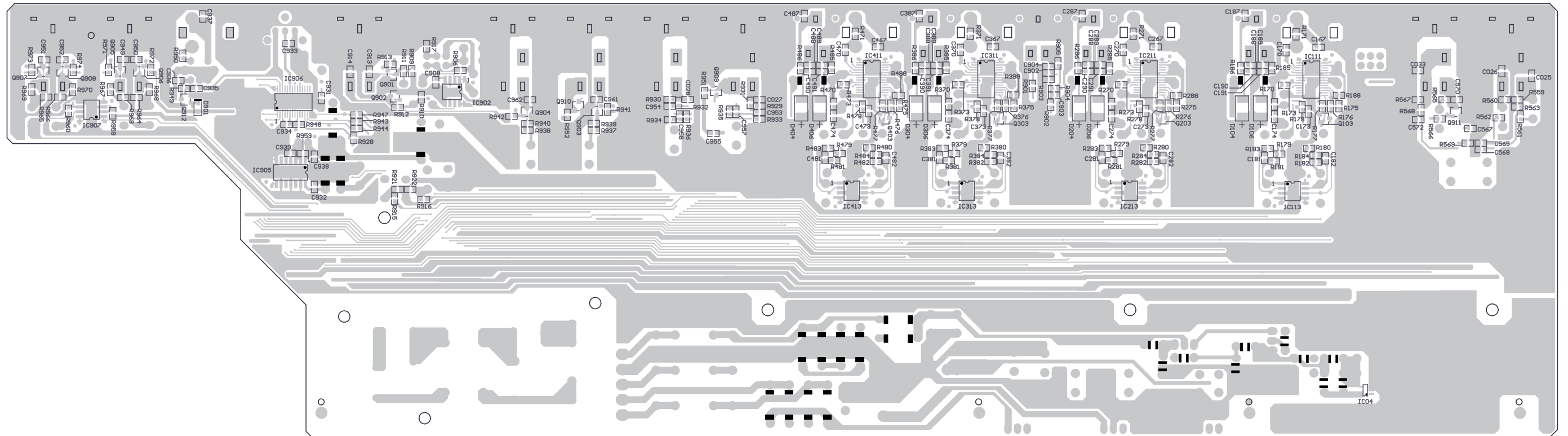
FOIL SIDE



POWER Board

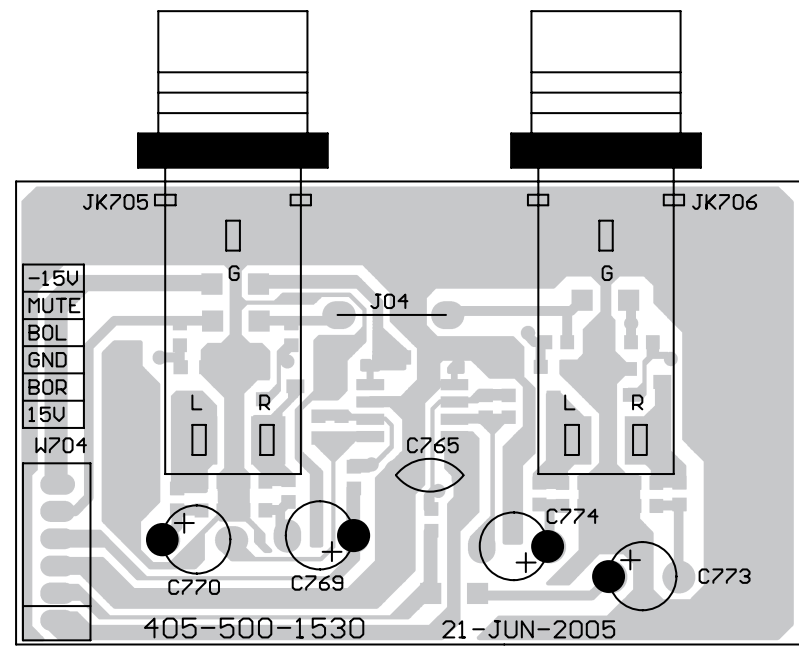


COMPONENT SIDE

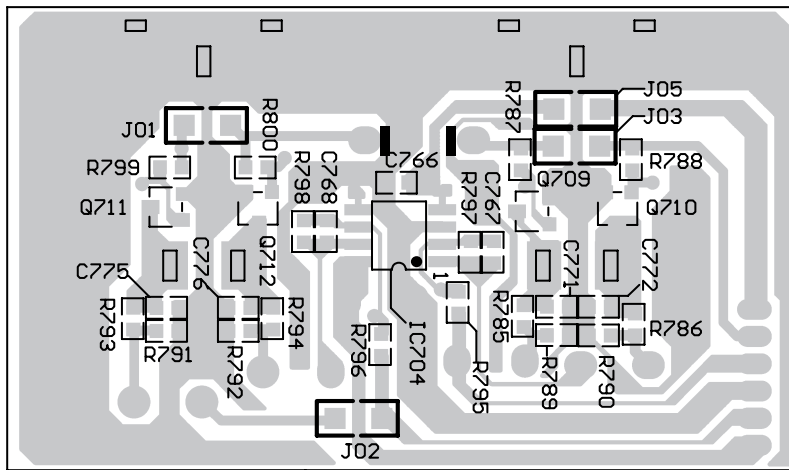


FOIL SIDE

**BOOTH Board**

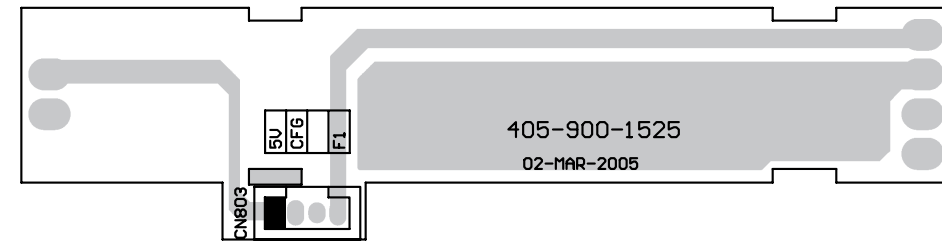


**COMPONENT SIDE**

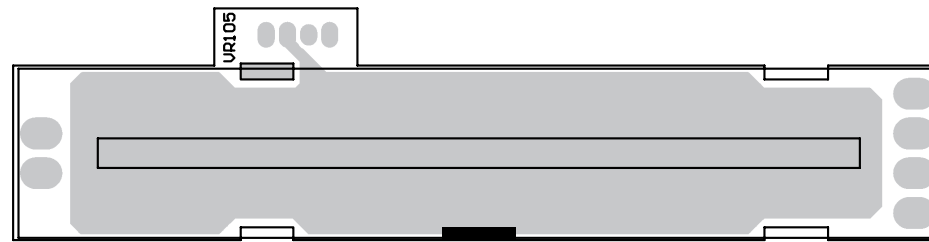


**FOIL SIDE**

**CH VR Board**

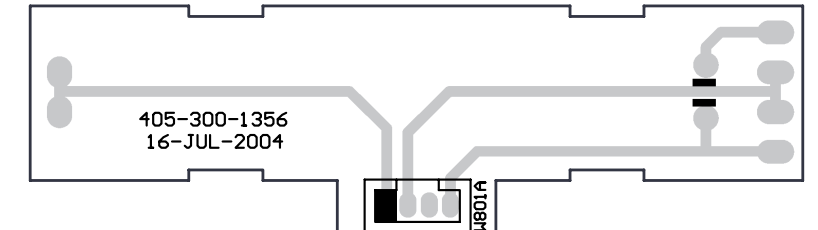


**FOIL SIDE**

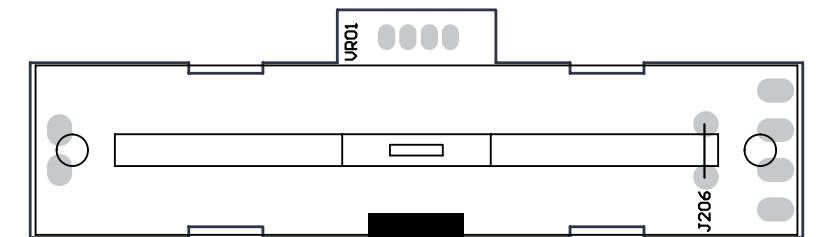


**COMPONENT SIDE**

**CH FADER Board**



**FOIL SIDE**



**COMPONENT SIDE**

# NOTE FOR PARTS LIST

- Part indicated with the mark "nsp" are not always in stock and possibly to take a long period of time for supplying, or in some case supplying of part may be refused.
- When ordering of part, clearly indicate "1" and "I" (i) to avoid mis-supplying.
- Ordering part without stating its part number can not be supplied.
- Part indicated with the mark "★" is not illustrated in the exploded view.
- Not including Carbon Film Resister ±5%, 1/4W Type in the P.W.Board parts list. (Refer to the Schematic Diagram for those parts.)
- Not including Carbon Chip Resister 1/16W Type in the P.W.Board parts list. (Refer to the Schematic Diagram for those parts.)

**WARNING:**

Parts marked with this symbol  $\triangle$  have critical characteristics.  
Use ONLY replacement parts recommended by the manufacturer.

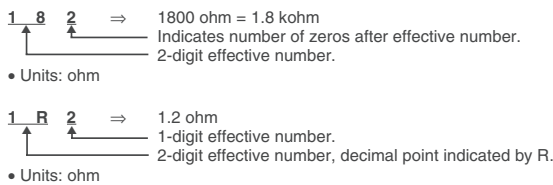
● **Resistors**

Ex.: 

RN	14K	2E	182	G	FR
Type	Shape and performance	Power	Resistance	Allowable error	Others

RD : Carbon RC : Composition RS : Metal oxide film RW : Winding RN : Metal film RK : Metal mixture	2B : 1/8W 2E : 1/4W 2H : 1/2W 3A : 1W 3D : 2W 3F : 3W 3H : 5W	F : ±1% G : ±2% J : ±5% K : ±10% M : ±20%	P : Pulse-resistant type NL : Low noise type NB : Non-burning type FR : Fuse-resistor F : Lead wire forming
---	---	---	---

\* **Resistance**



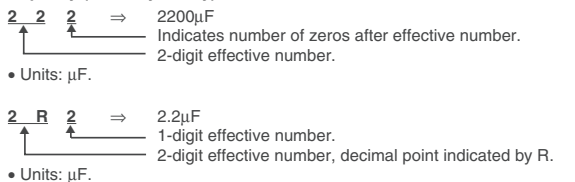
● **Capacitors**

Ex.: 

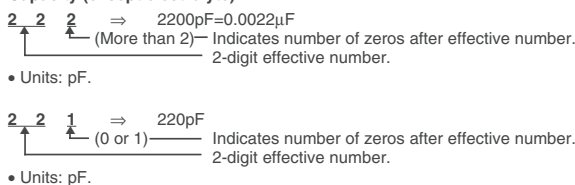
CE	04W	1H	2R2	M	BP
Type	Shape and performance	Dielectric strength	Capacity	Allowable error	Others

CE : Aluminum foil electrolytic CA : Aluminum solid electrolytic CS : Tantalum electrolytic CO : Film CK : Ceramic CC : Ceramic CP : Oil CM : Mica CF : Metallized CH : Metallized	0J : 6.3V 1A : 10V 1C : 16V 1E : 25V 1V : 35V 1H : 50V 2A : 100V 2B : 125V 2C : 160V 2D : 200V 2E : 250V 2H : 500V 2J : 630V	F : ±1% G : ±2% J : ±5% K : ±10% M : ±20% Z : +80% P : +100% C : ±0.25pF D : ±0.5pF = : Others	HS : High stability type BP : Non-polar type HR : Ripple-resistant type DL : For change and discharge HF : For assuring high frequency U : UL part C : CSA part W : UL-CSA type F : Lead wire forming
---	--	---	---

\* **Capacity (electrolyte only)**



\* **Capacity (except electrolyte)**



● When the dielectric strength is indicated in AC, "AC" is included after the dielectric strength value.

# 部品表について

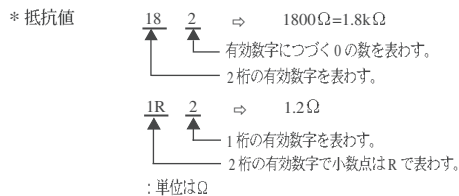
1. nsp 印の部品は常時在庫していませんので供給に長時間を要することがあります。  
場合によっては、供給をお断りすることがあります。
2. 部品を発注する際は特に数字の " 1 " と英字の " I " との区別をはっきり記入してください。
3. 部品番号を表示していない部品は供給できません。
4.  $\triangle$ 印の部品は安全上重要な部品です。交換するときは、安全および性能維持のため必ず指定の部品をご使用ください。
5. ★印のついている部品は分解図中には記載していません。
6. カーボン抵抗器 ± 5%、1/4W 型は記載していません。定数は回路図を参照願います。
7. カーボンチップ抵抗器 1/16W 型は記載していません。定数は回路図を参照願います。
8. 部品表の抵抗器、コンデンサの品名記号の読み方は表を参照してください。

● **抵抗器**

例) 

RN	14K	2E	182	G	FR
種類	形状特性	電力	抵抗値	許容差	その他

RD : カーボン RC : 固定体 RS : 金属系皮膜 RW : 巻線 RN : 金属皮膜 RK : 金属混合体	2B : 1/8 W 2E : 1/4 W 2H : 1/2 W 3A : 1 W 3D : 2 W 3F : 3 W 3H : 5 W	F : ±1% G : ±2% J : ±5% K : ±10% M : ±20%	P : 耐パルス形 NL : 低雑音形 NB : 不燃形 FR : ヒューズ抵抗 F : リード線成形
---	--	---	---



● **コンデンサ**

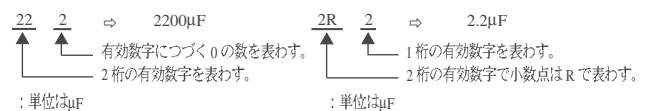
例) 

CE	04W	1H	2R2	M	BP
種類	形状特性	耐圧	容量	許容差	その他

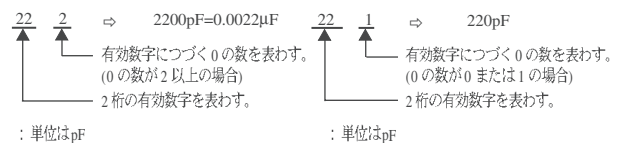
CE : アルミ箔電解 CA : アルミ固体電解 CS : タンタル電解 CQ : フィルム CK : セラミック CC : セラミック CP : オイル CM : マイカ CF : メタライズド CH : メタライズド	0J : 6.3 V 1A : 10 V 1C : 16 V 1E : 25 V 1V : 35 V 1H : 50 V 2A : 100 V 2B : 125 V 2C : 160 V 2D : 200 V 2E : 250 V 2H : 500 V 2J : 630 V	F : ±1% G : ±2% J : ±5% K : ±10% M : ±20% Z : +80% P : +100% C : ±0.25pF D : ±0.5pF = : その他	HS : 高安定形 BP : 無極性形 HR : 耐リップル形 DL : 充放電対策用 HF : 高周波保証用 U : UL 部品 C : CSA 部品 W : UL-CSA 部品 F : リード線成形
---	---	--	---

\* 容量値

● 電解コンデンサの場合



● 電解コンデンサ以外の場合



● 耐圧を交流で表示する場合は、耐圧表示の次に「AC」を表示します。

## PARTS LIST OF P.W.B. UNIT ASS'Y

\*本表に記載されている部品は、補修用部品のため製品に使用している部品とは一部、形状、寸法などが異なる場合があります。

\* The parts listed below are for maintenance only, might differ from the parts used in the unit in appearances or dimensions.

\* "nsp"印の部品は常時在庫していませんので供給に長時間を要することがあります。場合によっては、供給をお断りする場合があります。

\* Part indicated with the mark "nsp" are not always in stock and possibly to take a long period of time for supplying, or in some case supplying of part may be refused.

**Note:** The symbols in the column "Remarks" indicate the following destinations.

E2 : Europe model

E3 : U.S.A. & Canada model

### OUTPUT PWB

Ref. No.	nsp	Part No.	Part Name	Remarks	Q'ty	New
<b>SEMICONDUCTORS GROUP</b>						
IC114-115		00D 958 7036 200	NJM-4580M-TE2			
IC116		00D 958 7059 203	LC78211			
IC117		00D 958 7058 408	LC78213			
IC214-C215		00D 958 7036 200	NJM-4580M-TE2			
IC216		00D 958 7059 203	LC78211			
IC314-315		00D 958 7036 200	NJM-4580M-TE2			
IC316		00D 958 7059 203	LC78211			
IC414-415		00D 958 7036 200	NJM-4580M-TE2			
IC416		00D 958 7059 203	LC78211			
IC510		00D 958 7058 903	NJM-2068M-TE2			
IC701		00D 958 7059 407	BA15218F/BA15218FE2			
IC703		00D 958 7058 602	NJM4580D			
IC705		00D 958 7058 602	NJM4580D			
Q701-708		00D 958 7057 904	2SD2114K			
<b>CAPACITORS GROUP</b>						
C197-198		00D 958 7032 505	ELEC. (22uF/16V,M)			
C297-298		00D 958 7032 505	ELEC. (22uF/16V,M)			
C397-398		00D 958 7032 505	ELEC. (22uF/16V,M)			
C497-498		00D 958 7032 505	ELEC. (22uF/16V,M)			
C555-556		00D 958 7032 505	ELEC. (22uF/16V,M)			
C562		00D 958 7029 709	ELEC. CAPACTIOR(10uF/25V,M)			
C703-704		00D 958 7033 300	ELEC. (47uF/16V,M)			
C705-706		00D 958 7053 607	POLYESTER (0.012uF/50V,J)			
C707-708		00D 958 7055 401	POLYESTER (0.0033uF/100V,J)			
C709-710		00D 958 7032 505	ELEC. (22uF/16V,M)			
C715-716		00D 958 7033 300	ELEC. (47uF/16V,M)			
C717-718		00D 958 7053 607	POLYESTER (0.012uF/50V,J)			
C719-720		00D 958 7055 401	POLYESTER (0.0033uF/100V,J)			
C721-722		00D 958 7032 505	ELEC. (22uF/16V,M)			
C733-734		00D 958 7032 505	ELEC. (22uF/16V,M)			
C741-742		00D 958 7032 505	ELEC. (22uF/16V,M)			
C745-746		00D 958 7029 709	ELEC. CAPACTIOR(10uF/25V,M)			
C755-756		00D 958 7033 300	ELEC. (47uF/16V,M)			
C761-762		00D 958 7033 300	ELEC. (47uF/16V,M)			
<b>OTHERS PARTS GROUP</b>						
CD702	nsp	00D 941 0025 100	4P SOCKET			*
CN04		-	GROUND WIRE			*
CN701A	nsp	00D 958 7048 609	13P 1.0 FFC CONNECTOR			*
CN703A	nsp	00D 958 7048 502	8P 1.0 FFC CONNECTOR			*
CN704	nsp	00D 958 7017 106	6P SOCKET			*
CN902	nsp	00D 958 7048 706	16P FFC CONNECTOR			*

Ref. No.	nsp	Part No.	Part Name	Remarks	Q'ty	New
JK101		00D 958 7060 700	4P RCA JACK			*
JK201		00D 958 7060 700	4P RCA JACK			*
JK301		00D 958 7061 204	4P RCA JACK			
JK401		00D 958 7061 204	4P RCA JACK			
JK501		00D 958 7061 408	MIC JACK(97M-1008P-H)			
JK701		00D 958 7061 204	4P RCA JACK			
JK703-704		00D 958 7061 301	BALANCE OUTPUT JACK			
SW101		00D 958 7048 308	SLIDE SW(SSSF122NA1-HF,6PIN)			
SW201		00D 958 7048 308	SLIDE SW(SSSF122NA1-HF,6PIN)			
SW701		00D 958 7048 308	SLIDE SW(SSSF122NA1-HF,6PIN)			
SW702		00D 958 7048 308	SLIDE SW(SSSF122NA1-HF,6PIN)			

## BOOTH PWB

	Ref. No.	nsp	Part No.	Part Name	Remarks	Q'ty	New
<b>SEMICONDUCTORS GROUP</b>							
	IC704		00D 958 7059 407	BA15218F/BA15218FE2			
	Q709-712		00D 958 7057 904	2SD2114K			
<b>CAPACITORS GROUP</b>							
	C765		00D 958 7053 209	CERAMIC (0.1uF/50V,Z)			
	C769-770		00D 958 7033 300	ELEC. (47uF/16V,M)			
	C773-774		00D 958 7033 300	ELEC. (47uF/16V,M)			
<b>OTHERS PARTS GROUP</b>							
	JK705-706		00D 958 7060 904	MIC JACK			
	W704	nsp	00D 958 7050 309	6P 2.0 CONNECTOR WIRE			*
	*		-	JACK GROUND PLATE			

## POWER PWB

	Ref. No.	nsp	Part No.	Part Name	Remarks	Q'ty	New
<b>SEMICONDUCTORS GROUP</b>							
⚠	IC01		00D 958 7035 502	NJM7815FA			
⚠	IC02		00D 958 7059 504	NJM7915FA			
⚠	IC03		00D 958 7058 107	BA05T,3PIN			
	IC04		00D 958 7058 505	BD4745G/BD4745G-TR			
	IC511		00D 958 7058 903	NJM-2068M-TE2			
	IC603		00D 958 7059 407	BA15218F/BA15218FE2			
	IC901-902		00D 958 7059 407	BA15218F/BA15218FE2			
	IC908		00D 958 7059 407	BA15218F/BA15218FE2			
⚠	D01-10		00D 958 7056 808	1N4004			
	D103-106		00D 958 7056 905	SM4002A			
	D12-11		00D 958 7056 604	1SS132/1SS133			
	D203-206		00D 958 7056 905	SM4002A			
	D303-306		00D 958 7056 905	SM4002A			
	D403-406		00D 958 7056 905	SM4002A			
	Q01		00D 958 7057 603	2SC3330U-AC			
	Q04		00D 958 7057 807	DTA124TS/2SA1589/DTA124TSATP			
	Q05		00D 958 7057 506	DTA124EKA-T146			
	Q06		00D 958 7057 700	DTC114EKAT146			
	Q901-904		00D 958 7057 904	2SD2114K			
	Q909-910		00D 958 7057 409	2SC2412KT146R			
	ZD01		00D 958 0075 501	MTZJ10-B			
	ZD02		00D 958 7057 001	MTZJ5.6-B			
<b>RESISTORS GROUP</b>							
	VR606		00D 958 7060 409	ROTARY VR(RD902F-20-16KW-B20K-00D)			*
	VR901		00D 958 7060 409	ROTARY VR(RD902F-20-16KW-B20K-00D)			*
<b>CAPACITORS GROUP</b>							
⚠	C002-003		00D 958 7056 002	AC SAFETY (0.01uF/250V,M)			
⚠	C01-02		00D 941 0024 402	ELEC. (2200uF/35V,M)			
	C03-04		00D 958 7055 100	ELEC. (100uF/25V,M1)			
⚠	C05		00D 958 7053 500	ELEC. (2200uF/16V,M)			
	C06		00D 958 7053 306	ELEC. (100uF/10V,M)			
⚠	C07		00D 958 7055 207	ELEC. (220uF/35V,M)			
	C08		00D 958 7029 408	ELEC. (2.2uF/50V,M1)			
⚠	C09		00D 958 7032 408	ELEC. (22uF/16V,M)			
	C11-18		00D 958 7053 704	CAPACITOR (0.1uF,M)			*
	C563-564		00D 958 7032 408	ELEC. (22uF/16V,M)			
	C569		00D 958 7029 709	ELEC. (10uF/25V,M)			
	C905		00D 958 7055 508	POLYESTER (0.1uF/100V,J)			
	C906		00D 958 7029 806	POLYESTER (0.01uF/50V,J)			
	C909		00D 958 7055 809	ELEC. (0.22uF/50V,M)			
	C911-912		00D 958 7055 906	ELEC. (100uF/16V,M)			
	C959-960		00D 958 7032 408	ELEC. (22uF/16V,M)			
	C963		00D 958 7029 709	ELEC. (10uF/25V,M)			
	C964		00D 958 7029 709	ELEC. (10uF/25V,M1)			
<b>OTHERS PARTS GROUP</b>							
⚠	CN01	nsp	00D 958 7050 600	2P 3.96 SOCKET			

	Ref. No.	nsp	Part No.	Part Name	Remarks	Q'ty	New
⚠	CN02	nsp	00D 958 7050 707	2P 3.96 SOCKET			
⚠	CN03	nsp	00D 958 7050 600	2P 3.96 SOCKET			
⚠	CN04	nsp	00D 958 7051 007	5P 3.96 SOCKET			
	CN601A		00D 958 7050 008	6P 1.0 FFC CONNECTOR			*
	CN901		00D 958 7049 909	17P 1.0 FFC CONNECTOR			*
	CN902A-903A		00D 958 7048 706	16P FFC CONNECTOR			*
⚠	FS01-02		00D 958 7061 505	FUSE(1A/250V) E3	E3		
⚠	FS01-04		00D 958 7061 602	FUSE(1A,250V) E2	E2		
⚠	FS03		00D 958 7061 709	FUSE(1.5A/250V) E3	E3		
⚠	FS04		00D 958 7061 505	FUSE(1A/250V) E3	E3		
	F04	nsp	00D 958 0045 609	FUSE COVER			
	JK102		00D 958 7037 306	HEADPHONE JACK			
	JK202		00D 958 7037 306	HEADPHONE JACK			
	JK302		00D 958 7037 306	HEADPHONE JACK			
	JK402		00D 958 7037 306	HEADPHONE JACK			
	JK502		00D 958 7046 601	MIC JACK			
	JK901		00D 958 7037 306	HEADPHONE JACK			
	JK902		00D 958 7060 904	MIC JACK			
	JK903-906		00D 958 7046 601	MIC JACK			
⚠	L001		00D 958 7057 205	INDUCTOR(LF-2217)			
	*		-	JACK GROUND PLATE			
	*		-	BRACKET(L TYPE)			
	*		00D 958 7061 000	FUSE CLIPS			
	*		-	SEGREGATE SHEET			*
	*		-	SPACER SUPPORT			*
	*		00D 958 7062 300	CANOE CLIPS(MB-1S)			
	*		00D 941 0019 501	SCREW(M3*8,P=0.5,BLACK)			
	*		00D 958 7038 907	SCREW(M3*P0.5*5L)			



## MIXER PWB

Ref. No.	nsp	Part No.	Part Name	Remarks	Q'ty	New
<b>SEMICONDUCTORS GROUP</b>						
IC04		00D 958 7058 505	BD4745G/BD4745G-TR			
IC101-103		00D 958 7059 009	NJM-2060V-TE1			
IC104		00D 958 7059 407	BA15218F/BA15218FE2			
IC201-203		00D 958 7059 009	NJM-2060V-TE1			
IC204		00D 958 7059 407	BA15218F/BA15218FE2			
IC301-303		00D 958 7059 009	NJM-2060V-TE1			
IC304		00D 958 7059 407	BA15218F/BA15218FE2			
IC401-403		00D 958 7059 009	NJM-2060V-TE1			
IC404		00D 958 7059 407	BA15218F/BA15218FE2			
IC501-502		00D 958 7059 407	BA15218F/BA15218FE2			
IC511		00D 958 7058 903	NJM-2068M-TE2			
IC603		00D 958 7059 407	BA15218F/BA15218FE2			
IC606-609		00D 958 7059 407	BA15218F/BA15218FE2			
IC611		00D 958 7059 407	BA15218F/BA15218FE2			
IC616		00D 958 7059 407	BA15218F/BA15218FE2			
IC617		00D 958 0073 804	NJM-4556AD			
IC802		00D 958 7058 000	ADC0838CCWM			*
IC803-804		00D 958 7058 709	74AHC595D			
IC901		00D 958 7059 407	BA15218F/BA15218FE2			
IC902		00D 958 7059 407	BA15218F/BA15218FE2			
IC908		00D 958 7059 407	BA15218F/BA15218FE2			
D103-106		00D 958 7056 905	SM4002A			
D203-206		00D 958 7056 905	SM4002A			
D303-306		00D 958 7056 905	SM4002A			
D403-406		00D 958 7056 905	SM4002A			
D505		00D 958 7051 900	LED(GREEN,LTL-1CHJGDNN)			
D505		00D 958 7062 407	LED HOLDER			
D601		00D 958 7051 609	BLUE LED(LTL912TBKS)			
D602		00D 958 7051 706	LED(RED,LTL-16KE)			
D605A		00D 958 7051 706	LED(RED,LTL-16KE)			
D605A		00D 958 7062 203	LED HOLDER			
D873-880		00D 958 7062 407	LED HOLDER			
D882-888		00D 958 7062 407	LED HOLDER			
D876-873		00D 958 7051 706	LED(RED,LTL-16KE)			
D877		00D 958 7052 006	LED(YELLOW,LTL-1CHJSDNN)			
D878		00D 958 7051 706	LED(RED,LTL-16KE)			
D879		00D 958 7052 006	LED(YELLOW,LTL-1CHJSDNN)			
D880		00D 958 7051 706	LED(RED,LTL-16KE)			
D882		00D 958 7052 006	LED(YELLOW,LTL-1CHJSDNN)			
D883		00D 958 7051 706	LED(RED,LTL-16KE)			
D884-885		00D 958 7052 006	LED(YELLOW,LTL-1CHJSDNN)			
D886		00D 958 7051 706	LED(RED,LTL-16KE)			
D887		00D 958 7052 006	LED(YELLOW,LTL-1CHJSDNN)			
D888		00D 958 7051 900	LED(GREEN,LTL-1CHJGDNN)			
D889		00D 958 7056 604	1SS132/1SS133			
Q06		00D 958 7057 700	DTC114EKAT146			
Q507		00D 958 7057 506	DTA124EKA-T146			
Q601-606		00D 958 7057 904	2SD2114K			
Q801-802		00D 958 7057 700	DTC114EKAT146			
Q804		00D 958 7057 700	DTC114EKAT146			

	Ref. No.	nsp	Part No.	Part Name	Remarks	Q'ty	New
	Q806-817		00D 958 7057 700	DTC114EKAT146			
	Q836		00D 958 7057 506	DTA124EKA-T146			
	Q901-904		00D 958 7057 904	2SD2114K			
	Q909-910		00D 958 7057 409	2SC2412KT146R			
	ZD501		00D 958 7034 600	MTZJ10-B			
<b>RESISTORS GROUP</b>							
	R111-112		00D 958 7052 501	METAL FILM(4.87K OHM,1/6W,J,T-26)			*
	R113-114		00D 958 7052 608	METAL FILM(48.7K OHM,1/6W,J,T-26)			*
	R115-116		00D 958 7052 705	METAL FILM(9.31K OHM,1/6W,J,T-26)			*
	R211-212		00D 958 7052 501	METAL FILM(4.87K OHM,1/6W,J,T-26)			*
	R213-214		00D 958 7052 608	METAL FILM(48.7K OHM,1/6W,J,T-26)			*
	R215-216		00D 958 7052 705	METAL FILM(9.31K OHM,1/6W,J,T-26)			*
	R311-31		00D 958 7052 501	METAL FILM(4.87K OHM,1/6W,J,T-26)			*
	R313-314		00D 958 7052 608	METAL FILM(48.7K OHM,1/6W,J,T-26)			*
	R315-316		00D 958 7052 705	METAL FILM(9.31K OHM,1/6W,J,T-26)			*
	R411-412		00D 958 7052 501	METAL FILM(4.87K OHM,1/6W,J,T-26)			*
	R413-414		00D 958 7052 608	METAL FILM(48.7K OHM,1/6W,J,T-26)			*
	R415-416		00D 958 7052 705	METAL FILM(9.31K OHM,1/6W,J,T-26)			*
	VR101		00D 958 7059 805	ROTARY VR(20KA*2,RD902-40)			*
	VR102-104		00D 958 7060 001	ROTARY VR(20KB*2,RD902F-40)			*
	VR201		00D 958 7059 805	ROTARY VR(20KA*2,RD902-40)			*
	VR202-204		00D 958 7060 001	ROTARY VR(20KB*2,RD902F-40)			*
	VR301		00D 958 7059 805	ROTARY VR(20KA*2,RD902-40)			*
	VR302-304		00D 958 7060 001	ROTARY VR(20KB*2,RD902F-40)			*
	VR401		00D 958 7059 805	ROTARY VR(20KA*2,RD902-40)			*
	VR402-404		00D 958 7060 001	ROTARY VR(20KB*2,RD902F-40)			*
	VR501-502		00D 958 7059 708	ROTARY VR(20KA,RD901F-40)			*
	VR503-508		00D 958 7060 108	ROTARY VR(50KB,RD901F-40)			*
	VR601		00D 958 7060 302	ROTARY VR(50KMN*2,RD902F-40.)			*
	VR602-603		00D 958 7059 805	ROTARY VR(20KA*2,RD902-40)			*
	VR604		00D 958 7060 205	ROTARY VR(50KB*2,RD902F-40)			*
	VR606		00D 958 7060 506	ROTARY VR(50KB*2,RD902F-40)			*
	VR607		00D 958 7059 805	ROTARY VR(20KA*2,RD902-40)			*
	VR801		00D 958 7059 902	ROTARY VR(20KB,RD901F-40)			*
<b>CAPACITORS GROUP</b>							
	C101-102		00D 958 7056 206	ELEC. (1uF/50V,M)			
	C109-110		00D 958 7056 400	ELEC. (22uF/16V,M)			
	C111-112		00D 958 7054 208	METAL POLYESTER(0.0082uF/100V)			*
	C113-116		00D 958 7053 801	METAL POLYESTER(0.0018uF/100V)			*
	C117-118		00D 958 7053 209	CERAMIC (0.1uF/50V,Z)			
	C119-120		00D 958 7054 208	METAL POLYESTER(0.0082uF/100V)			*
	C121-122		00D 958 7054 703	POLYESTER (820pF/50V,J)			
	C123-124		00D 958 7054 004	METAL POLYESTER(0.0047uF/100V)			*
	C125-126		00D 958 7056 109	POLYESTER (0.1uF/63V,J)			
	C127-130		00D 958 7054 402	METAL POLYESTER(0.022uF/100V)			*
	C131-132		00D 958 7056 109	POLYESTER (0.1uF/63V,J)			
	C133-134		00D 958 7054 305	METAL POLYESTER(0.01uF/100V)			*
	C135-136		00D 958 7054 606	METAL POLYESTER(0.056uF/100V)			*
	C137-138		00D 958 7056 303	ELEC. (10uF/25V,M)			
	C141-142		00D 958 7056 400	ELEC. (22uF/16V,M)			

	Ref. No.	nsp	Part No.	Part Name	Remarks	Q'ty	New
	C149		00D 958 7053 209	CERAMIC (0.1uF/50V,Z)			
	C201-202		00D 958 7056 206	ELEC. (1uF/50V,M)			
	C209-210		00D 958 7056 400	ELEC. (22uF/16V,M)			
	C211-212		00D 958 7054 208	METAL POLYESTER(0.0082uF/100V)			*
	C213-216		00D 958 7053 801	METAL POLYESTER(0.0018uF/100V)			*
	C217-218		00D 958 7053 209	CERAMIC (0.1uF/50V,Z)			
	C219-220		00D 958 7054 208	METAL POLYESTER(0.0082uF/100V)			*
	C221-222		00D 958 7054 703	POLYESTER (820pF/50V,J)			
	C223-224		00D 958 7054 004	METAL POLYESTER(0.0047uF/100V)			*
	C225-226		00D 958 7056 109	POLYESTER (0.1uF/63V,J)			
	C227-230		00D 958 7054 402	METAL POLYESTER(0.022uF/100V)			
	C231-232		00D 958 7056 109	POLYESTER (0.1uF/63V,J)			
	C233-234		00D 958 7054 305	METAL POLYESTER(0.01uF/100V)			*
	C235-236		00D 958 7054 606	METAL POLYESTER(0.056uF/100V)			*
	C237-238		00D 958 7056 303	ELEC. (10uF/25V,M)			
	C241-242		00D 958 7056 400	ELEC. (22uF/16V,M)			
	C249		00D 958 7053 209	CERAMIC (0.1uF/50V,Z)			
	C301-302		00D 958 7056 206	ELEC. (1uF/50V,M)			
	C309-310		00D 958 7056 400	ELEC. (22uF/16V,M)			
	C311-312		00D 958 7054 208	METAL POLYESTER(0.0082uF/100V)			*
	C313-316		00D 958 7053 801	METAL POLYESTER(0.0018uF/100V)			*
	C317-318		00D 958 7053 209	CERAMIC (0.1uF/50V,Z)			
	C319-320		00D 958 7054 208	METAL POLYESTER(0.0082uF/100V)			*
	C321-322		00D 958 7054 703	POLYESTER (820pF/50V,J)			
	C323-324		00D 958 7054 004	METAL POLYESTER(0.0047uF/100V)			*
	C325-326		00D 958 7056 109	POLYESTER (0.1uF/63V,J)			
	C327-330		00D 958 7054 402	METAL POLYESTER(0.022uF/100V)			*
	C331-332		00D 958 7056 109	POLYESTER (0.1uF/63V,J)			
	C333-334		00D 958 7054 305	METAL POLYESTER(0.01uF/100V)			*
	C335-336		00D 958 7054 606	METAL POLYESTER(0.056uF/100V)			*
	C337-338		00D 958 7056 303	ELEC. (10uF/25V,M)			
	C341-342		00D 958 7056 400	ELEC. (22uF/16V,M)			
	C349		00D 958 7053 209	CERAMIC (0.1uF/50V,Z)			
	C401-402		00D 958 7056 206	ELEC. (1uF/50V,M)			
	C409-410		00D 958 7056 400	ELEC. (22uF/16V,M)			
	C411-412		00D 958 7054 208	METAL POLYESTER(0.0082uF/100V)			*
	C413-416		00D 958 7053 801	METAL POLYESTER(0.0018uF/100V)			*
	C417-418		00D 958 7053 209	CERAMIC (0.1uF/50V,Z)			
	C419-420		00D 958 7054 208	METAL POLYESTER(0.0082uF/100V)			*
	C421-422		00D 958 7054 703	POLYESTER (820pF/50V,J)			
	C423-424		00D 958 7054 004	METAL POLYESTER(0.0047uF/100V)			*
	C425-426		00D 958 7056 109	POLYESTER (0.1uF/63V,J)			
	C427-430		00D 958 7054 402	METAL POLYESTER(0.022uF/100V)			*
	C431-432		00D 958 7056 109	POLYESTER (0.1uF/63V,J)			
	C433-434		00D 958 7054 305	METAL POLYESTER(0.01uF/100V)			*
	C435-436		00D 958 7054 606	METAL POLYESTER(0.056uF/100V)			*
	C437-438		00D 958 7056 303	ELEC. (10uF/25V,M)			
	C441-442		00D 958 7056 400	ELEC. (22uF/16V,M)			
	C449		00D 958 7053 209	CERAMIC (0.1uF/50V,Z)			
	C501-502		00D 958 7053 209	CERAMIC (0.1uF/50V,Z)			
	C503		00D 958 7056 400	ELEC. (22uF/16V,M)			
	C506		00D 958 7056 400	ELEC. (22uF/16V,M)			
	C507-510		00D 958 7054 509	METAL POLYESTER(0.039uF/100V)			*
	C511-512		00D 958 7053 102	CERAMIC (270PF/50V,K)			
	C513-514		00D 958 7053 908	METAL POLYESTER(0.0033uF/100V)			*
	C515-518		00D 958 7054 101	METAL POLYESTER(0.0056uF/100V)			*

Ref. No.	nsp	Part No.	Part Name	Remarks	Q'ty	New
C519-520 C627 C631 C635-636		00D 958 7055 003 00D 958 7053 209 00D 958 7053 209 00D 958 7055 304	CERAMIC (22pF/50V,J 5,CH) CERAMIC (0.1uF/50V,Z) CERAMIC (0.1uF/50V,Z) ELEC. (4.7uF/50V,M)			
C639-640 C643-644 C657 C661-662 C663-664		00D 958 7053 209 00D 958 7056 400 00D 958 7053 209 00D 958 7055 304 00D 958 7056 507	CERAMIC (0.1uF/50V,Z) ELEC. (22uF/16V,M) CERAMIC (0.1uF/50V,Z) ELEC. (4.7uF/50V,M) ELEC. (100uF/25V,M)			
C669-670 C840		00D 958 7056 303 00D 958 7030 701	ELEC. (10uF/25V,M) ELEC. (2.2uF/50V,M)			
<b>OTHERS PARTS GROUP</b>						
CN01 CN101 CN201 CN301 CN401	nsp nsp nsp nsp nsp	- 00D 958 7049 404 00D 958 7049 404 00D 958 7049 404 00D 958 7049 404	GROUND WIRE 5P 1.0FFC CONNECTOR 5P 1.0FFC CONNECTOR 5P 1.0FFC CONNECTOR 5P 1.0FFC CONNECTOR			* * * * *
CN501 CN601 CN603 CN604 CN701	nsp nsp nsp nsp nsp	00D 958 7050 105 00D 958 7050 105 00D 958 7049 006 00D 958 7048 900 00D 958 7048 609	6P 1.0 FFC CONNECTOR 6P 1.0 FFC CONNECTOR 18P 1.0 FFC CONNECTOR 9P 1.0 FFC CONNECTOR 13P 1.0 FFC CONNECTOR			* * * * *
CN703 CN802 CN903  SW801-804	nsp nsp nsp  	00D 958 7049 501 00D 958 7049 307 00D 958 7048 706  00D 958 7048 104	8P 1.0 FFC CONNECTOR 25P 1.0 FFC CONNECTOR 16P FFC CONNECTOR  SLIDE SW(L=11mm)			* * *  *
SW805 SW806-810 SW811-813 SW815-830		00D 958 7047 804 00D 958 7047 901 00D 958 7048 007 00D 958 7048 201	ROTARY SW(SR1712F-0105-30F0A-N9-N) ROTARY SW(SR1712F-0108-30F0A-N9-N) SLIDE SW(L=11mm) TACT SW(SFKHVBD3510-HF,H=5)			* * * *
W01-03 W602 W807  *  * *	nsp nsp nsp    nsp	- 00D 958 7050 503 00D 958 7050 804  00D 941 0019 501 00D 958 7045 806 -	LEAD WIRE 3P 2.5 CONNECTOR WIRE 4P SOCKET  SCREW(M3*8,P=0.5,BLACK) LED BASE SPACER SUPPORT			* *     * *

## HEAD PHONE PWB

Ref. No.	nsp	Part No.	Part Name	Remarks	Q'ty	New
<b>OTHERS PARTS GROUP</b>						
CN602	nsp	00D 958 7051 104	3P SOCKET			
JK601		00D 958 7060 807	MIC JACK			
*		-	JACK GROUND PLATE			

## LEVER METER PWB

Ref. No.	nsp	Part No.	Part Name	Remarks	Q'ty	New
<b>SEMICONDUCTORS GROUP</b>						
D801-802		00D 958 7052 103	LED(RED,LTST-C190KRKT)			
D803-805		00D 958 7052 200	LED(YELLOW,LTST-C190KSKT6)			
D806-812		00D 958 7051 803	LED(YELLOW/GREEN,LTST-C190KGKT)			
D813-814		00D 958 7052 103	LED(RED,LTST-C190KRKT)			
D815-817		00D 958 7052 200	LED(YELLOW,LTST-C190KSKT6)			
D818-824		00D 958 7051 803	LED(YELLOW/GREEN,LTST-C190KGKT)			
D825-826		00D 958 7052 103	LED(RED,LTST-C190KRKT)			
D827-829		00D 958 7052 200	LED(YELLOW,LTST-C190KSKT6)			
D830-836		00D 958 7051 803	LED(YELLOW/GREEN,LTST-C190KGKT)			
D837-838		00D 958 7052 103	LED(RED,LTST-C190KRKT)			
D839-841		00D 958 7052 200	LED(YELLOW,LTST-C190KSKT6)			
D842-848		00D 958 7051 803	LED(YELLOW/GREEN,LTST-C190KGKT)			
D849-850		00D 958 7052 103	LED(RED,LTST-C190KRKT)			
D851-853		00D 958 7052 200	LED(YELLOW,LTST-C190KSKT6)			
D854-860		00D 958 7051 803	LED(YELLOW/GREEN,LTST-C190KGKT)			
D861-862		00D 958 7052 103	LED(RED,LTST-C190KRKT)			
D863-865		00D 958 7052 200	LED(YELLOW,LTST-C190KSKT6)			
D866-872		00D 958 7051 803	LED(YELLOW/GREEN,LTST-C190KGKT)			
Q818-829		-	2SA1037AKT146R/2SA1037AKR			
Q830-835		-	2SA1037AKT146R/2SA1037AKR			
<b>CAPACITORS GROUP</b>						
C820-821		00D 958 7054 907	ELEC. (100uF/10V,M)			
<b>OTHERS PARTS GROUP</b>						
CN801A	nsp	00D 958 7049 103	20P 1.0 FFC CONNECTOR			*
CN801A	nsp	00D 958 7048 803	20P 1.0 FFC CONNECTOR			*

## CPU PWB

Ref. No.	nsp	Part No.	Part Name	Remarks	Q'ty	New
<b>SEMICONDUCTORS GROUP</b>						
IC105		00D 958 7058 806	LC78212			*
IC106		00D 958 7059 601	M51132L			
IC107		00D 958 7059 106	NJM-4558M-TE3			
IC108		00D 958 7058 301	78L12			
IC109		00D 958 7059 106	NJM-4558M-TE3			
IC205		00D 958 7058 806	LC78212			
IC206		00D 958 7059 601	M51132L			
IC209		00D 958 7059 106	NJM-4558M-TE3			
IC305		00D 958 7058 806	LC78212			
IC306		00D 958 7059 601	M51132L			
IC307		00D 958 7059 106	NJM-4558M-TE3			
IC309		00D 958 7059 106	NJM-4558M-TE3			
IC405		00D 958 7058 806	LC78212			
IC406		00D 958 7059 601	M51132L			
IC409		00D 958 7059 106	NJM-4558M-TE3			
IC503		00D 958 7036 006	BA15218F/BA15218FE2			
IC504		00D 958 7059 300	NJM-2058V-TE1			
IC509		00D 958 7058 408	LC78213			
IC601-603		00D 958 7036 006	BA15218F/BA15218FE2			
IC604		00D 958 7058 408	LC78213			
IC605		00D 958 7036 006	BA15218F/BA15218FE2			
IC610		00D 958 7036 006	BA15218F/BA15218FE2			
IC612-613		00D 958 7036 006	BA15218F/BA15218FE2			
IC615		00D 958 7058 408	LC78213			
IC801		00D 958 7064 900	CPU IC ASS'Y	PIC18F8520-I/PTG,TQFP-80)		*
IC805		00D 958 7058 204	BA033FP-E2			
D101-102		00D 958 7056 701	RB160M-30TR			*
D201-202		00D 958 7056 701	RB160M-30TR			*
D301-302		00D 958 7056 701	RB160M-30TR			*
D401-402		00D 958 7056 701	RB160M-30TR			*
D503-504		00D 958 7056 701	RB160M-30TR			*
D603-604		00D 958 7056 701	RB160M-30TR			*
Q08		00D 958 7057 700	DTC114EKAT146			
Q503-504		00D 958 7057 302	2SA1037AKT146R/2SA1037AKR			
Q505-506		00D 958 7057 904	2SD2114K			
Q509-510		00D 958 7057 904	2SD2114K			
X801		00D 958 7061 806	CRYSTAL 8MHZ			
<b>RESISTORS GROUP</b>						
RB801		00D 958 7052 909	THICK FILM RESISTOR NET- WORKS(10KOHM,J,RA TYPE,4R5P)			
RB802		00D 958 7052 802	THICK FILM RESISTOR NET- WORKS(10KOHM,J,RA TYPE,5R6P)			
RB803		00D 958 7053 005	THICK FILM RESISTOR NET- WORKS(10KOHM,J,RA TYPE,6R7P )			
RB804		00D 958 7022 405	THICK FILM RESISTOR NET- WORKS(10KOHM,J,RA TYPE,8R9P)			

	Ref. No.	nsp	Part No.	Part Name	Remarks	Q'ty	New
	RB805		00D 958 7052 909	THICK FILM RESISTOR NET- WORKS(10KOHM,J,RA TYPE,4R5P)			
<b>CAPACITORS GROUP</b>							
	C145-146 C147		00D 958 7053 403 00D 958 7032 408	ELEC. (1uF/50V,M) ELEC. (22uF/16V,M)			
	C148 C155 C245-246 C247 C248		00D 958 7029 709 00D 958 7055 906 00D 958 7053 403 00D 958 7032 408 00D 958 7029 709	ELEC. (10uF/25V,M) ELEC. (100uF/16V,M) ELEC. (1uF/50V,M) ELEC. (22uF/16V,M) ELEC. (10uF/25V,M)			
	C345-346 C347 C348 C445-446 C447		00D 958 7053 403 00D 958 7032 408 00D 958 7029 709 00D 958 7053 403 00D 958 7032 408	ELEC. (1uF/50V,M) ELEC. (22uF/16V,M) ELEC. (10uF/25V,M) ELEC. (1uF/50V,M) ELEC. (22uF/16V,M)			
	C448 C521-522 C533-534 C601-602 C607-610		00D 958 7029 709 00D 958 7029 709 00D 958 7029 709 00D 958 7029 602 00D 958 7055 702	ELEC. (10uF/25V,M) ELEC. (10uF/25V,M) ELEC. (10uF/25V,M) ELEC. (4.7uF/50V,M) ELEC. (0.47uF/50V,M)			
	C615-616 C629-630 C651-652 C801 C803		00D 958 7032 408 00D 958 7029 709 00D 958 7033 300 00D 958 7053 306 00D 958 7053 306	ELEC. (22uF/16V,M) ELEC. (10uF/25V,M) ELEC. (47uF/16V,M) ELEC. (100uF/10V,M) ELEC. (100uF/10V,M)			
	C811-814 C815-816 C841		00D 958 7053 403 00D 958 7055 605 00D 958 7054 800	ELEC. (1uF/50V,M) ELEC. (0.47uF/50V,M) ELEC. (1000uF/16V,M)			
<b>OTHERS PARTS GROUP</b>							
	CN101A CN201A CN301A CN401A	nsp nsp nsp nsp	00D 958 7049 200 00D 958 7049 200 00D 958 7049 200 00D 958 7049 200	5P 1.0 FFC CONNECTOR 5P 1.0 FFC CONNECTOR 5P 1.0 FFC CONNECTOR 5P 1.0 FFC CONNECTOR			* * * *
	CN501A CN603A CN604A CN801 CN802A	nsp nsp nsp nsp nsp	00D 958 7050 008 00D 958 7049 006 00D 958 7049 608 00D 958 7048 803 00D 958 7049 307	6P 1.0 FFC CONNECTOR 18P 1.0 FFC CONNECTOR 9P 1.0 FFC CONNECTOR 20P 1.0 FFC CONNECTOR 25P 1.0 FFC CONNECTOR			* * * * *
	CN803 CN901	nsp nsp	00D 958 7048 405 00D 958 7049 802	5P SOCKET 17P 1.0 FFC CONNECTOR			*
	L801-802		00D 958 7057 108	BEAD CORE(86-019-A TAPING)			
	W702 W803-807	nsp nsp	00D 958 7050 202 00D 958 7049 705 -	4P 2.0 CONNECTOR WIRE 4P 2.0 CONNECTOR WIRE SPACER SUPPORT			* *
			00D 958 7038 703	SCREW(M3*8,P=0.5,BLACK)			

## CH VR PWB

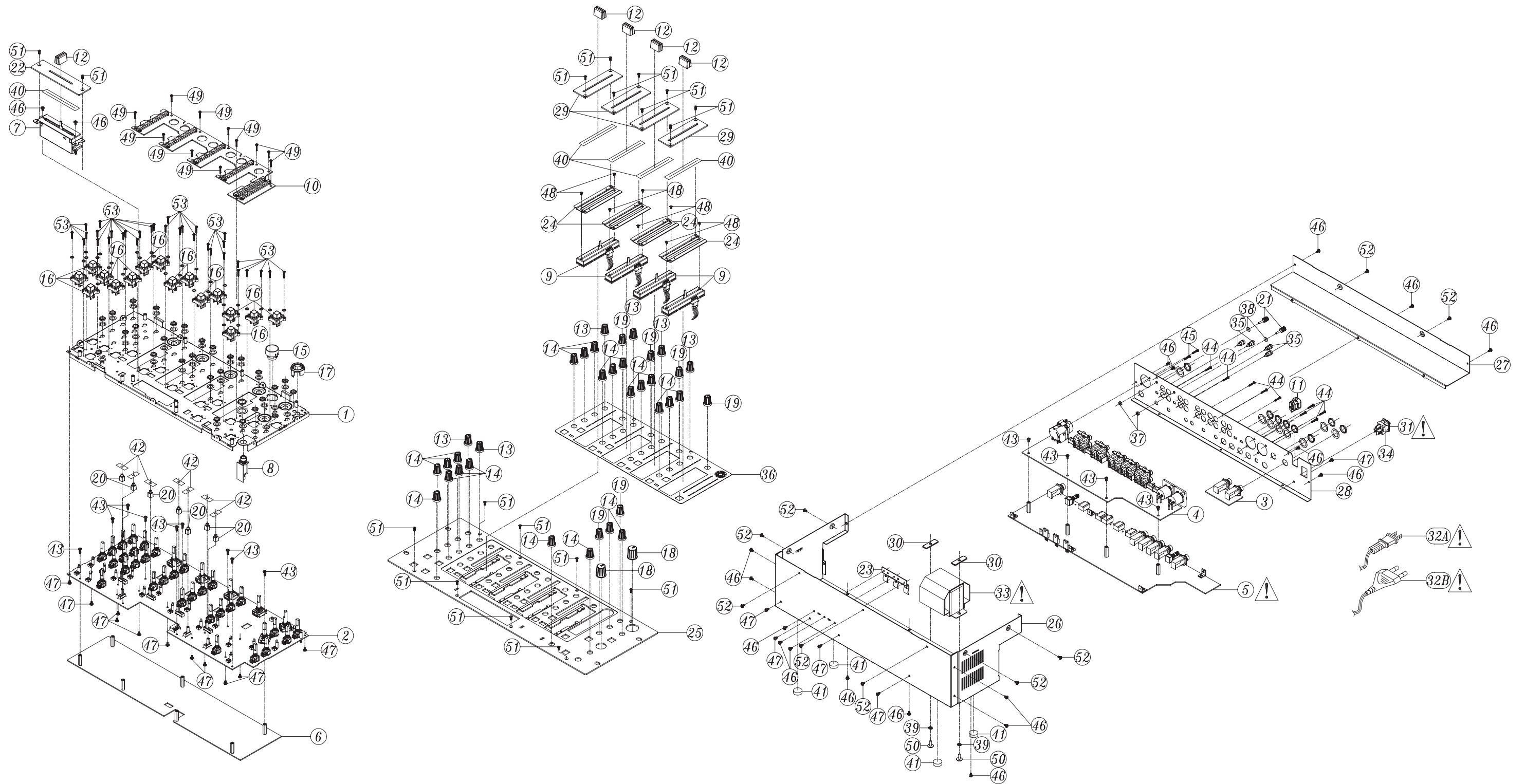
Ref. No.	nsp	Part No.	Part Name	Remarks	Q'ty	New
<b>RESISTORS GROUP</b>						
VR105		00D 958 7060 603	SLIDE VR(50K(0B)*2			*
<b>OTHERS PARTS GROUP</b>						
CN803	nsp	00D 958 7050 901	4P SOCKET(B4B-PH-K)			


## CROSS FADER &amp; FIXED PLATE

Ref. No.	nsp	Part No.	Part Name	Remarks	Q'ty	New
<b>RESISTORS GROUP</b>						
VR01		00D 958 7037 005	SLIDE VR(50K(0B)*2)			*
<b>OTHERS PARTS GROUP</b>						
W801A	nsp	00D 958 7050 406	4P 2.0 CONNECTOR WIRE			*
*	nsp	00D 958 7047 202	CS TYPE FIXED PLATE			*
*	nsp	00D 958 7039 207	SCREW(ISO,F,3*4,ZS)			



# EXPLODED VIEWS



**WARNING:**  
 Parts marked with this symbol  have critical characteristics.  
 Use ONLY replacement parts recommended by the manufacturer.

△印の部分は安全を維持するために重要な部品です。従って交換時は必ず指定の部品を使用してください。

## PARTS LIST OF EXPLODED VIEW

\*本表に記載されている部品は、補修用部品のため製品に使用している部品とは一部、形状、寸法などが異なる場合があります。

\* The parts listed below are for maintenance only, might differ from the parts used in the unit in appearances or dimensions.

\* "nsp" 印の部品は常時在庫していませんので供給に長時間を要することがあります。場合によっては、供給をお断りする場合があります。

\* Part indicated with the mark "nsp" are not always in stock and possibly to take a long period of time for supplying, or in some case supplying of part may be refused.

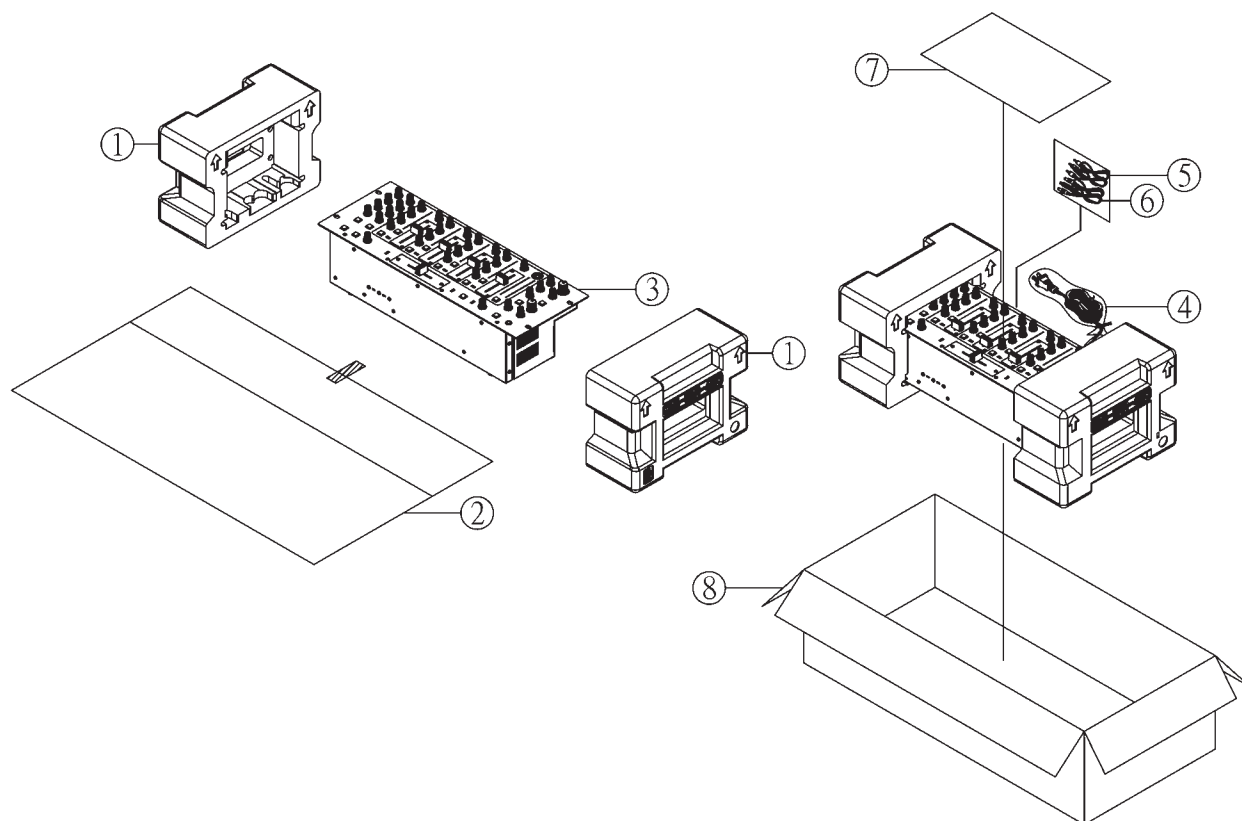
**Note:** The symbols in the column "Remarks" indicate the following destinations.

E2 : Europe model      E3 : U.S.A. & Canada model

	Ref. No.	nsp	Part No.	Part Name	Remarks	Q'ty	New
	1	nsp	00D 958 7064 007	FRONT BOARD ASS'Y		1	*
	2	nsp	00D 958 7064 104	MIXER PCB ASS'Y		1	*
	3	nsp	00D 958 7064 201	BOOTH PCB ASS'Y		1	*
	4	nsp	00D 958 7064 308	OUTPUT PCB ASS'Y		1	*
⚠	5	nsp	00D 958 7064 502	POWER PCB ASS'Y	E2	1	*
⚠	5	nsp	00D 958 7064 405	POWER PCB ASS'Y	E3	1	*
	6	nsp	00D 958 7064 609	CPU PCB ASS'Y		1	*
	7		00D 958 7064 706	CROSS FADER & FIXED PLATE ASS'Y		1	*
	8	nsp	00D 958 7064 803	HEADPHONE PCB ASS'Y		1	*
	9	nsp	00D 958 7065 006	CH VR PCB ASS'Y		4	*
	10	nsp	00D 958 7065 103	LEVER METER PCB ASS'Y		1	*
	11	nsp	00D 958 7046 504	CORD BUSH(SZ)		1	
	12		00D 958 7045 505	PUSH KNOB		5	
	13		00D 958 7045 602	ROTARY KNOB(ABS)		6	*
	14		00D 958 7045 709	ROTARY KNOB(ABS)		23	*
	15		00D 958 7045 903	TRANSPARENT MEDIA ADAPTER		1	*
	16		00D 958 7046 009	SQUARE KNOB		16	*
	17		00D 958 7046 106	JACKET		1	*
	18		00D 958 7046 203	LARGE ROTARY KNOB(ABS)		2	*
	19		00D 958 7046 300	SMALL ROTARY KNOB(ABS)		6	*
	20		00D 958 7046 407	SQUARE PUSH KNOB		7	*
	21		00D 958 7013 605	GROUND PIN		2	
	22		00D 958 7047 707	VR BOARD(IRON,2t)		1	*
	23	nsp	00D 958 7046 708	FIXED PLATE FOR IC(SECC,1t)		1	
	24		00D 958 7047 309	CH FIXED PLATE		4	*
	25		00D 958 7046 805	FRONT PANEL		1	*
	26	nsp	00D 958 7047 406	BOTTOM BASE		1	*
	27	nsp	00D 958 7047 008	BACK COVER	E2	1	*
	27	nsp	00D 958 7047 105	BACK COVER	E3	1	*
	28	nsp	00D 958 7046 902	BACK BOARD		1	*
	29		00D 958 7047 503	CH VR BOARD		4	*
	30	nsp	00D 958 7047 600	BRACKET TRANSFORMER		2	*
⚠	31		00D 958 7015 302	POWER SW		1	
⚠	32A		00D 958 7051 502	AC POWER CORD(VDE TYPE)		1	*
⚠	32B		00D 958 7051 405	AC POWER CORD(UL TYPE)		1	*
⚠	33		00D 958 7052 404	TRANSFORMER(AC230V)	E2	1	*
⚠	33		00D 958 7052 307	TRANSFORMER(AC115V)	E3	1	*
⚠	34		00D 958 7056 002	0.01uF/250V,M,BULK 16,Y5V		1	
	35		00D 958 7061 107	RCA ADAPTOR PLUG(A028)		4	
	36		00D 958 7061 903	DECORATION		1	*
	37		-	NUT(M3*P0.5)		2	
	38		00D 958 7039 508	WASHER(8*3.2*1t,NI)		2	
	39		00D 958 7063 600	SPRING		2	
	40	nsp	00D 958 7063 804	HIMILON		5	
	41		00D 958 7063 901	MAT FORBASE		4	
	42	nsp	00D 958 7063 707	CUSHION		7	*
	43	nsp	00D 941 0019 501	SCREW(M3*8,P=0.5,BLACK)		13	
	44	nsp	00D 958 7063 406	SCREW((PTP,M3*10)		9	

	Ref. No.	nsp	Part No.	Part Name	Remarks	Q'ty	New
	45	nsp	00D 958 7063 309	SCREW(ISO,M3*8)		2	
	46	nsp	00D 958 7063 503	SCREW(BTB,3*5,ZB)		19	
	47	nsp	00D 958 7038 907	SCREW(M3*P0.5*5L)		16	
	48	nsp	00D 958 7039 207	SCREW(ISOF,3*4,ZS)		8	
	49	nsp	00D 958 7063 105	SCREW(JMP,2.6*5,ZB)		11	
	50	nsp	00D 958 7063 202	SCREW(W.STN,4*10,ZS)		2	
	51	nsp	00D 958 7063 008	SCREW(CTF,3*7)		18	
	52	nsp	00D 958 7062 805	SCREW(WBTP3*5 CAP=7)		9	*
	53	nsp	00D 958 7062 902	SCREW(WBTP,2.6*8)		32	*

## PACKING VIEW



## PARTS LIST OF PACKING & ACCESSORIES

\* 本表に記載されている部品は、補修用部品のため製品に使用している部品とは一部、形状、寸法などが異なる場合があります。

\* The parts listed below are for maintenance only, might differ from the parts used in the unit in appearances or dimensions.

\* "nsp" 印の部品は常時在庫していませんので供給に長時間を要することがあります。場合によっては、供給をお断りする場合があります。

\* Part indicated with the mark "nsp" are not always in stock and possibly to take a long period of time for supplying, or in some case supplying of part may be refused.

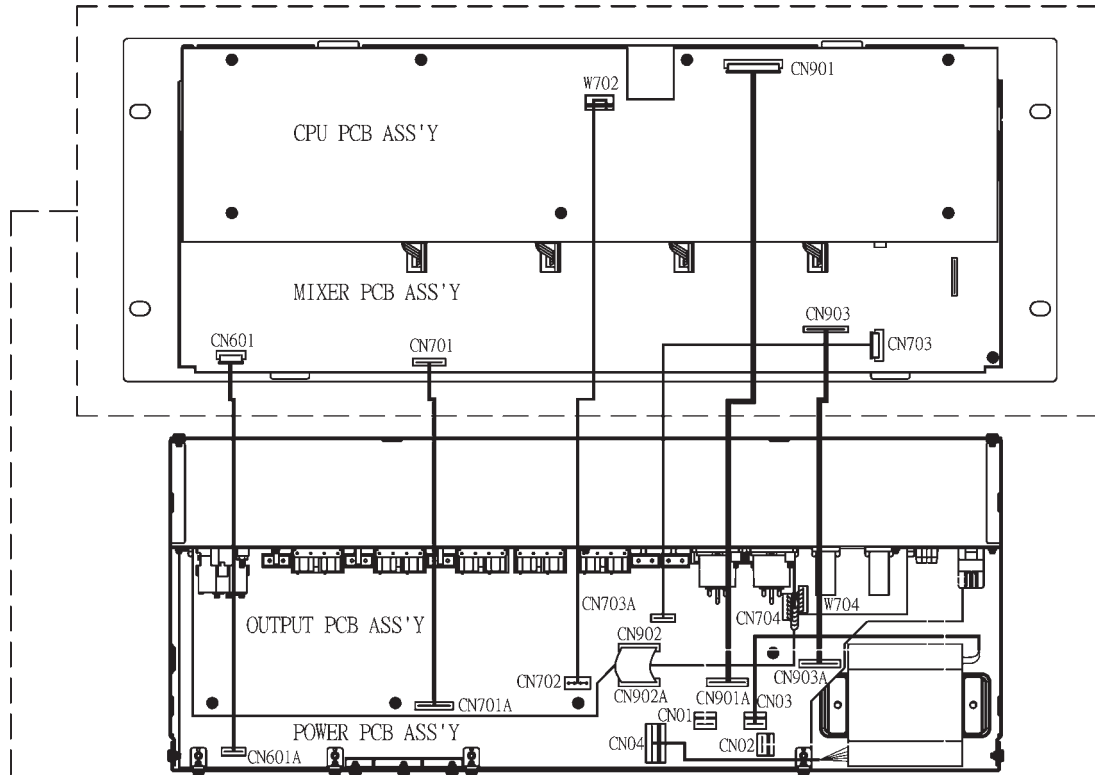
**Note:** The symbols in the column "Remarks" indicate the following destinations.

E2 : Europe model      E3 : U.S.A. & Canada model

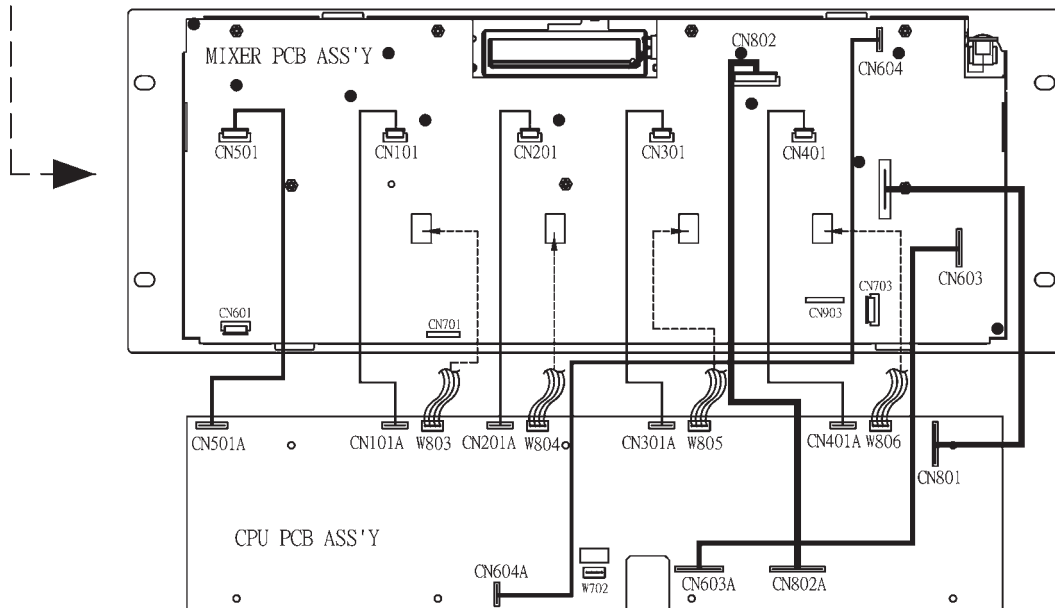
	Ref. No.	nsp	Part No.	Part Name	Remarks	Q'ty	New
	1	nsp	00D 958 7062 504	POLYFOAM		2	*
	2	nsp	00D 958 7062 708	SOFT BAG		1	
	3		-	MIXER			
⚠	4		00D 958 7051 405	AC POWER CORD (UL TYPE)	E3	1	*
⚠	4		00D 958 7051 502	AC POWER CORD (VDE TYPE)	E2	1	*
	5		00D 958 7051 201	3.5mm STEREO CORD-NI		2	*
	6		00D 958 7051 308	2P RCA PATH CORD		2	
	7		00D 958 7062 009	INST. MANUAL		1	*
	8	nsp	00D 958 7062 601	GIFT BOX		1	*

**WIRING DIAGRAM**

1. UPPER PART (MIXER PCB ASS'Y and CPU PCB ASS'Y) and LOWER PART WIRING DIAGRAM




2. MIXER PCB ASS'Y and CPU PCB ASS'Y ( UPPER PART)



## NOTE FOR SCHEMATIC DIAGRAM

### WARNING:

Parts marked with this symbol  have critical characteristics. Use ONLY replacement parts recommended by the manufacturer.

### CAUTION:

Before returning the unit to the customer, make sure you make either (1) a leakage current check or (2) a line to chassis resistance check. If the leakage current exceeds 0.5 milliamps, or if the resistance from chassis to either side of the power cord is less than 460 kohms, the unit is defective.


### WARNING:

DO NOT return the unit to the customer until the problem is located and corrected.

### NOTICE:

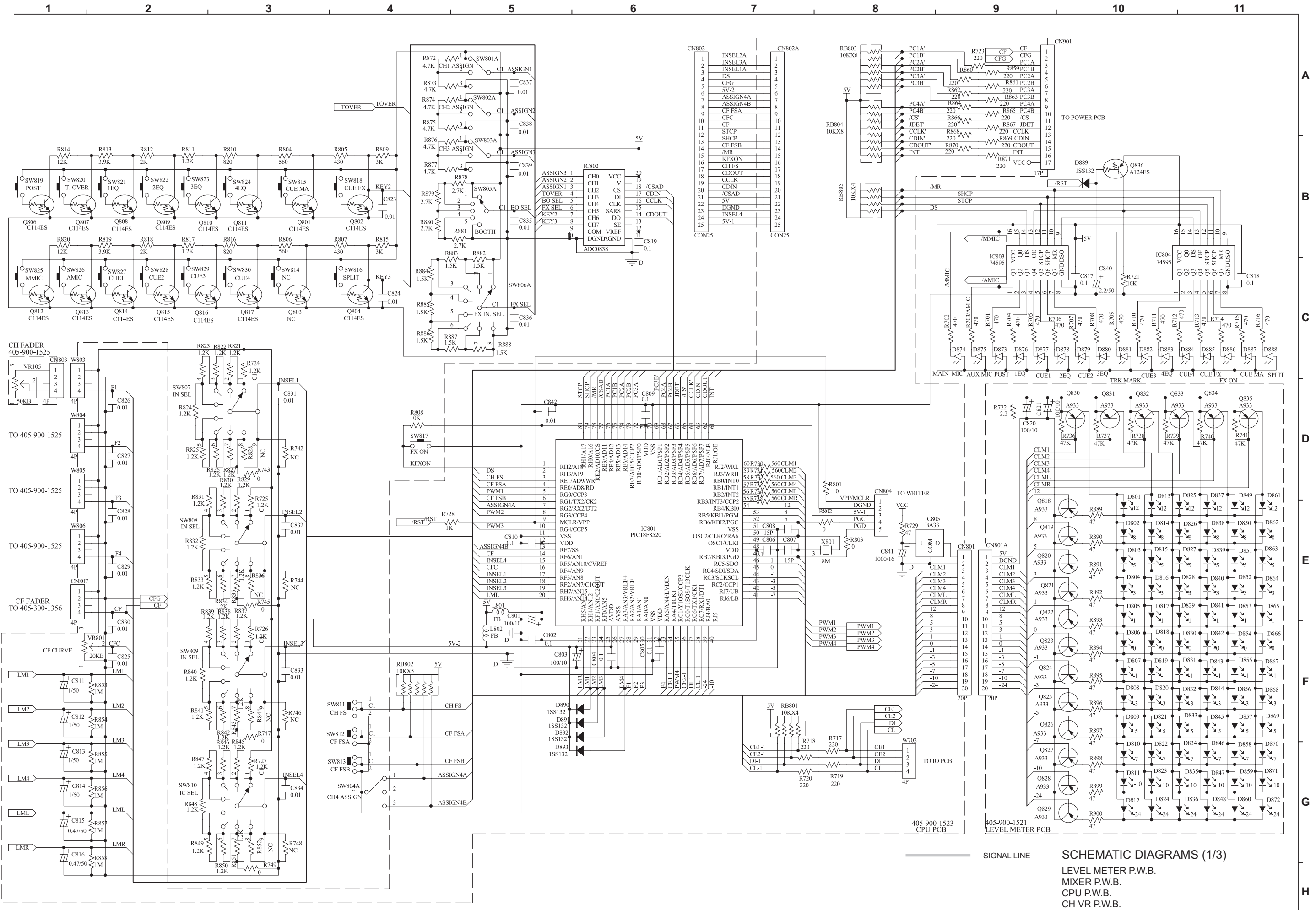
ALL RESISTANCE VALUES IN OHM. k=1,000 OHM  
M=1,000,000 OHM  
ALL CAPACITANCE VALUES IN MICRO FARAD.  
P=MICRO-MICRO FARAD  
EACH VOLTAGE AND CURRENT ARE MEASURED AT  
NO SIGNAL INPUT CONDITION.  
CIRCUIT AND PARTS ARE SUBJECT TO CHANGE  
WITHOUT PRIOR NOTICE.

## 配線図について

 印の部品は安全を維持するために重要な部品です。従って交換時は必ず指定の部品を使用してください。

### 注)

- (1) 指定なき抵抗値は  $\Omega$ 、k は  $k\Omega$ 、M は  $M\Omega$  を示す。
- (2) 指定なきコンデンサーの値は  $\mu F$ 、p は  $pF$  を示す。
- (3) 各部の電圧は無信号の値を示す。
- (4) この配線図は基本配線図です。改良等のため変更することがありますのでご了承ください。



SIGNAL LINE

SCHEMATIC DIAGRAMS (1/3)

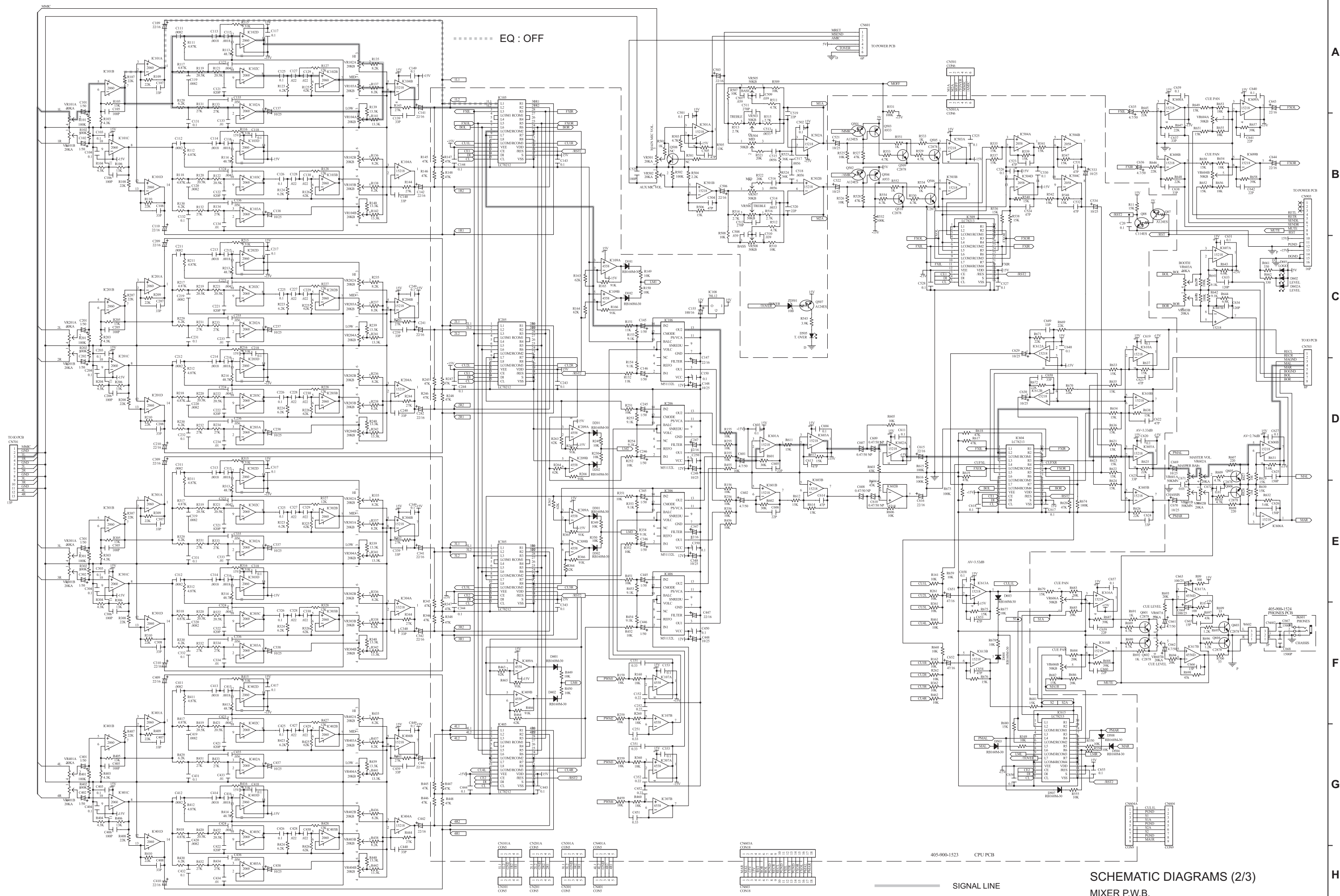
LEVEL METER P.W.B.

MIXER P.W.B.

CPU P.W.B.

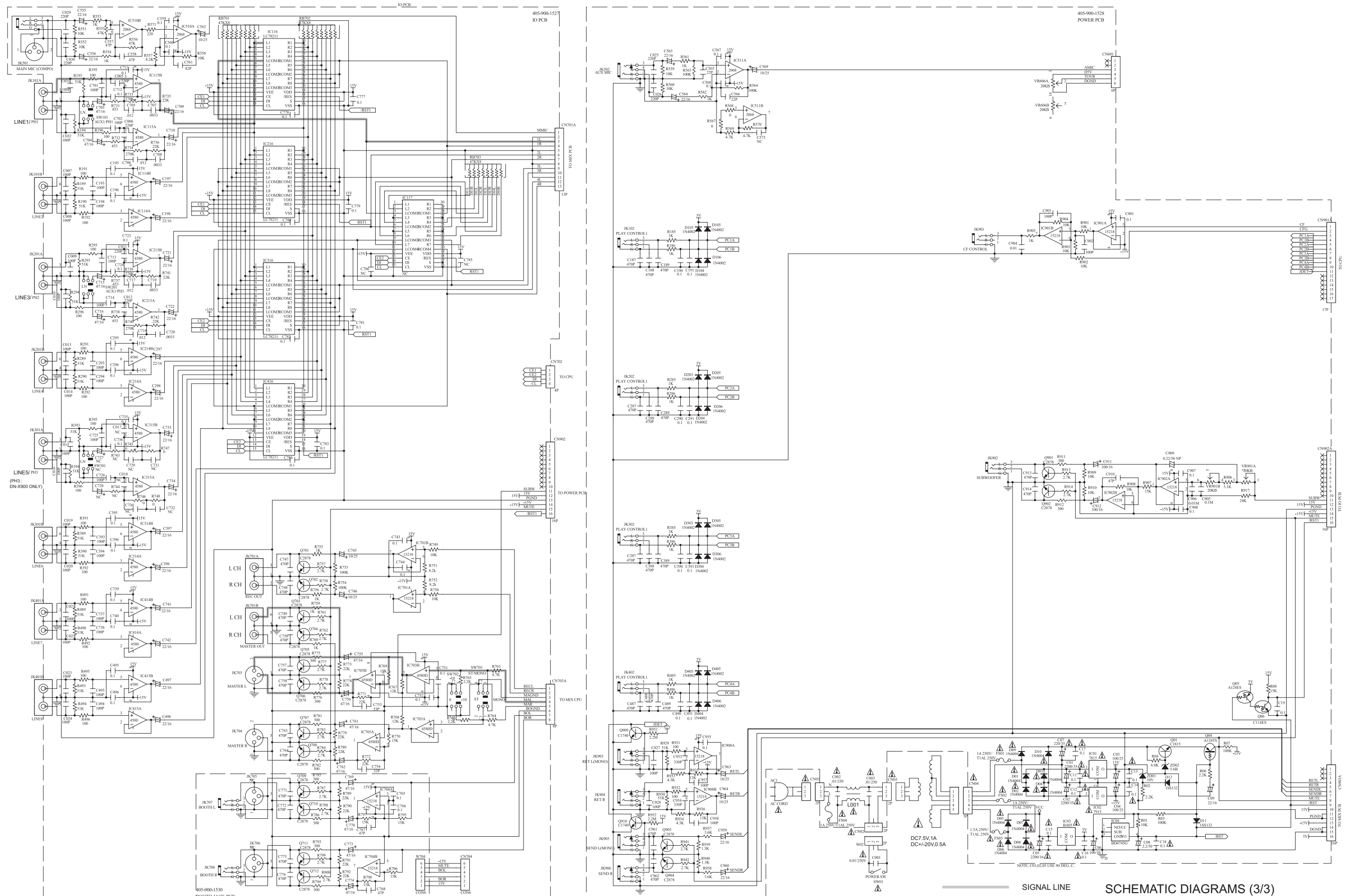
CH VR P.W.B.

1 2 3 4 5 6 7 8 9 10 11





1 2 3 4 5 6 7 8 9 10 11



SIGNAL LINE  
IO P.W.B.  
POWER P.W.B.  
BOOTH JACK P.W.B.

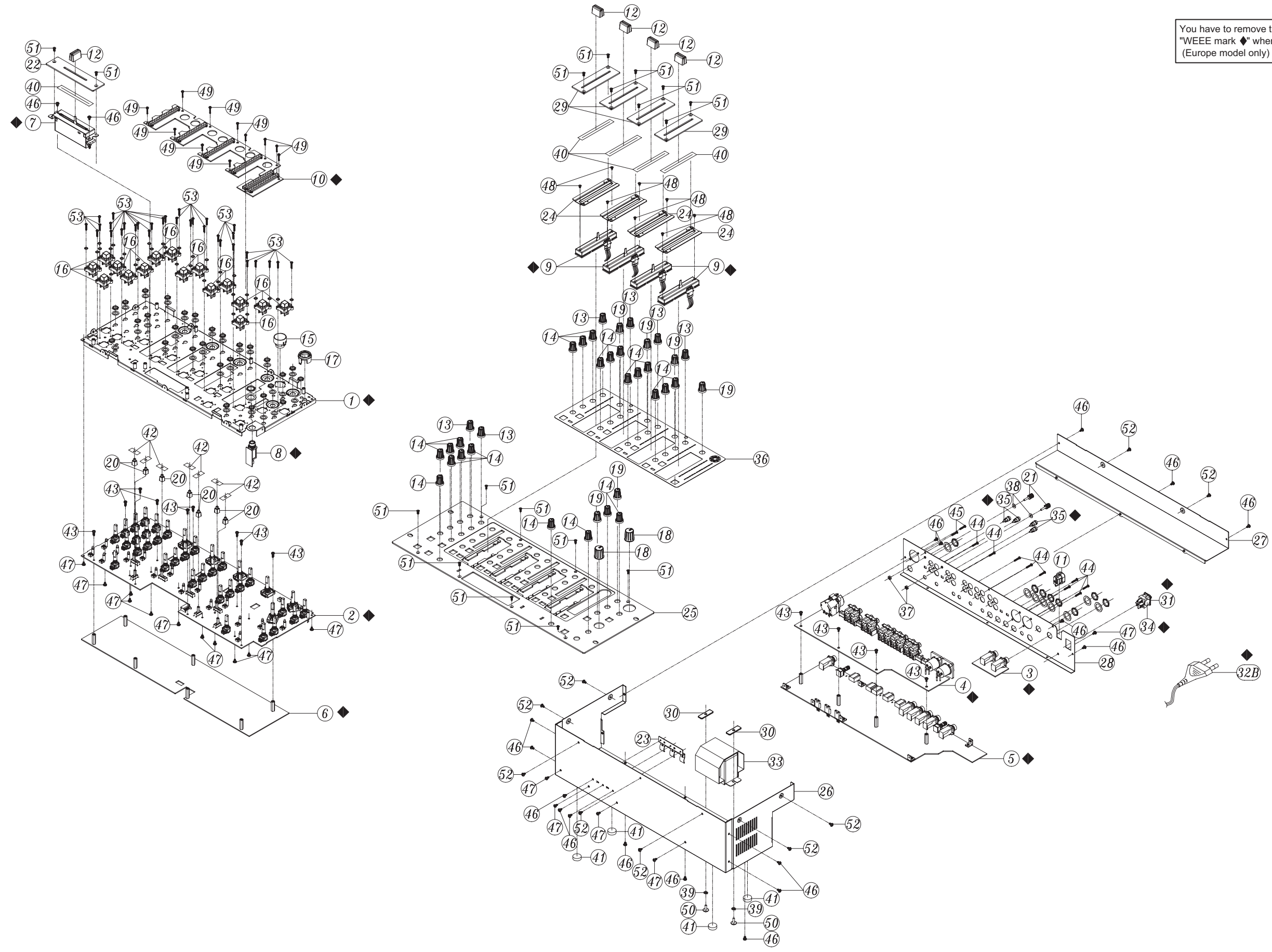
# DOCUMENTS FOR WEEE

## Details of Recycle Parts

\* You have to remove the parts that marked "WEEE Mark ◆" when the recycling processing. (Europe model only)

Ref. No.	WEEE MARK	Part Name	Material	Q'ty
1	◆	FRONT BOARD ASS'Y	COMPLEX	1
2	◆	MIXER PCB ASS'Y	COMPLEX	1
3	◆	BOOTH PCB ASS'Y	COMPLEX	1
4	◆	OUTPUT PCB ASS'Y	COMPLEX	1
5	◆	POWER PCB ASS'Y	COMPLEX	1
5	◆	POWER PCB ASS'Y	COMPLEX	1
6	◆	CPU PCB ASS'Y	COMPLEX	1
7	◆	CROSS FADER & FIXED PLATE ASS'Y	COMPLEX	1
8	◆	HEADPHONE PCB ASS'Y	COMPLEX	1
9	◆	CH VR PCB ASS'Y	COMPLEX	4
10	◆	LEVER METER PCB ASS'Y	COMPLEX	1
11		CORD BUSH(SZ)	PA	1
12		PUSH KNOB	ABS	5
13		ROTARY KNOB(ABS)	ABS	6
14		ROTARY KNOB(ABS)	ABS	23
15		TRANSPARENT MEDIA ADAPTER	ABS	1
16		SQUARE KNOB	ABS	16
17		JACKET	PC	1
18		LARGE ROTARY KNOB(ABS)	ABS	2
19		SMALL ROTARY KNOB(ABS)	ABS	6
20		SQUARE PUSH KNOB	ABS	7
21		GROUND PIN	STEEL	2
22		VR BOARD(IRON,2t)	STEEL	1
23		FIXED PLATE FOR IC(SECC,1t)	STEEL	1
24		CH FIXED PLATE	STEEL	4
25		FRONT PANEL	STEEL	1
26		BOTTOM BASE	STEEL	1
27		BACK COVER	STEEL	1
28		BACK BOARD	STEEL	1
29		CH VR BOARD	STEEL	4
30		BRACKET TRANSFORMER	STEEL	2
31	◆	POWER SW	COMPLEX	1
32A	◆	AC POWER CORD(VDE TYPE)	COMPLEX	1
33		TRANSFORMER(AC230V)	COMPLEX	1
34	◆	0.01uF/250V,M,BULK 16,Y5V	COMPLEX	1
35	◆	RCA ADAPTOR PLUG(A028)	COMPLEX	4
36		DECORATION	PC	1
37		NUT(M3*P0.5)	STEEL	2
38		WASHER(8*3.2*1t,NI)	STEEL	2
39		SPRING	STEEL	2
40		HIMILON	NONWOVEN	5
41		MAT FORBASE	NONWOVEN	4
42		CUSHION	NONWOVEN	7
43		SCREW(M3*8,P=0.5,BLACK)	STEEL	13
44		SCREW((PTP,M3*10)	STEEL	9
45		SCREW(ISO,M3*8)	STEEL	2
46		SCREW(BTB,3*5,ZB)	STEEL	19
47		SCREW(M3*P0.5*5L)	STEEL	16
48		SCREW(ISO,F,3*4,ZS)	STEEL	8
49		SCREW(JMP,2.6*5,ZB)	STEEL	11
50		SCREW(W.STN,4*10,ZS)	STEEL	2
51		SCREW(CTF,3*7)	STEEL	18
52		SCREW(WBTP3*5 CAP=7)	STEEL	9
53		SCREW(WBTP,2.6*8)	STEEL	32

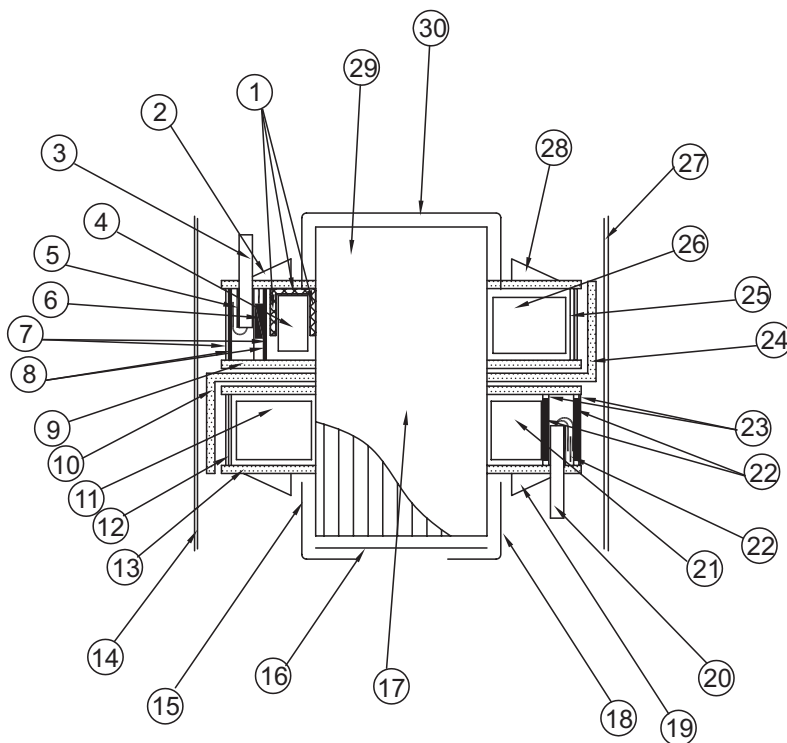
Exploded view of DN-X500 (Europe model)



You have to remove the parts that marked "WEEE mark" when the recycling processing. (Europe model only)

Details of Recycle parts for Power transformer

Part No.33 : POWER TRANS



No.	Material
1	COMPLEX
2	PET
3	COMPLEX
4	COPPER WIRE
5	COMPLEX
6	COMPLEX
7	COMPLEX
8	STEEL
9	PET
10	PET
11	COPPER WIRE
12	COMPLEX
13	PET
14	COMPLEX
15	STEEL
16	STEEL
17	STEEL
18	STEEL
19	PET
20	COMPLEX
21	COPPER WIRE
22	STEEL
23	COMPLEX
24	STEEL
25	COMPLEX
26	COPPER WIRE
27	COMPLEX
28	PET
29	STEEL
30	STEEL