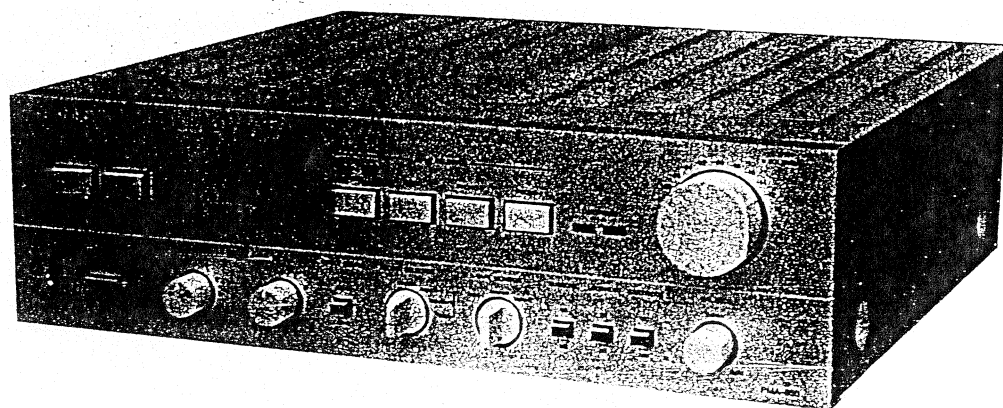


DENON

Hi-Fi Component Amplifier

SERVICE MANUAL MODEL PMA-550



| | |
|---|-------|
| SPECIFICATIONS | 1 |
| BLOCK DIAGRAM | 1 |
| METHOD OF ADJUSTMENTS | 2 |
| NOTES ON SERVICING REMOTE SWITCH | 2 |
| EXPLODED VIEW OF CHASSIS AND CABINET | 3 |
| PARTS LIST FOR EXPLODED VIEW | 4 |
| PRINTED CIRCUIT BOARD PATTERNS AND PARTS LIST | |
| EQ. CONTROL UNIT AUE-010 | 5,6 |
| INPUT SWITCH, LED UNIT ETC-392B | 7 |
| POWER AMP UNIT PUX-028 | 8~10 |
| POWER SUPPLY UNIT ETC-393B | 11,12 |
| WIRING DIAGRAM | 13,14 |
| CONNECTION DIAGRAM | 15,16 |

NIPPON COLUMBIA CO., LTD.

SPECIFICATIONS

POWER AMPLIFIER SECTION (TUNER -- SPOUT)

Rated Output: Both channels driven
 20 Hz ~ 20 kHz 100 W + 100 W (8 ohm load THD 0.005%)
 1 kHz 140 W + 140 W (4 ohm load) (MAX)
 1 kHz 100 W + 100 W (4 ohm load) (IEC)

Total Harmonic Distortion: Less than 0.005 %

Intermodulation Distortion: Less than 7 kHz/60 Hz; 1/4 0.008% (at amplitude output) equivalent to rated output)

Power Band Width: 5 Hz ~ 100 kHz (IHF, T.H.D. 0.035%)

Transmission Characteristics: 1 Hz ~ 400 kHz ± 3 dB (at 1 W output)

Input Sensitivity: 150 mV

Input Impedance: 40 k ohm

Output Impedance: 0.1 ohm (1 kHz)

SN Ratio (IHFA Network): 108 dB (Input terminals short-circuited)

Output Terminals: Speaker: A & B load 4 ~ 16 ohm, A + B load 8 ~ 16 ohm; Headphone/ Stereo headphone

EQUALIZER AMPLIFIER SECTION

Equalizer Amplifier Output (REC OUT Terminal): Maximum output 10 V (at 50 k ohm load)
 Rated output 150 mV
 Total harmonic distortion: below 0.001% (at 1 kHz, 8 V output)

Input Sensitivity/Input Impedance:

| | | | |
|-----------|----|-------------|----------|
| PHONO-1 | MM | 2.5 mV | 50 k ohm |
| PHONO-2 | MC | 125 μ V | 100 ohm |
| TUNER | | 150 mV | 40 k ohm |
| AUX, TAPE | | 150 mV | 40 k ohm |

RIAA Deviation:

| | | |
|---------|----|---------------------------------------|
| PHONO-1 | MM | Within ± 0.2 dB (20 Hz ~ 100 kHz) |
| PHONO-2 | MC | Within ± 0.2 dB (20 Hz ~ 100 kHz) |

OVERALL CHARACTERISTICS

SN Ratio (IHFA Network): PHONO-1 MM 90 dB (Input terminals short-circuited, at 2.5 mV input)
 PHONO-2 MC 73 dB (Input terminals short-circuited, at 250 μ V input)

TUNER TAPE AUX 108 dB (Input terminals short-circuited)

Tone Control Adjustable Range:

| | |
|--------|-------------------|
| BASS | 100 Hz ± 8 dB |
| TREBLE | 10 kHz ± 8 dB |

Filtering Characteristics: EQUALIZER SUBSONIC 18 Hz, 6 dB/oct

Loudness Characteristics: Low Frequency 100 Hz + 7 dB
 High Frequency 10 kHz + 6 dB

AC OUTLET:

(For U.S and Canada) Not included in systems for European use
 SWITCHES x 2, 100 W (Total)
 UNSWITCHED x 1 250 W

POWER SOURCE:

Germany and France: AC 220 V, 50 Hz
 U.K.: AC 240 V, 50 Hz
 U.S.A.: AC 120 V, 60 Hz
 Hong Kong: AC 200 V, 50 Hz

POWER CONSUMPTION:

260 W (U.S.A.)
 430 VA (Canada)
 740 W (at maximum output) (IEC)

DIMENSIONS:

434 mm (W) x 132 mm (H) x 407 mm (D)
 (including rubber feet, control knobs and terminals)

WEIGHT:

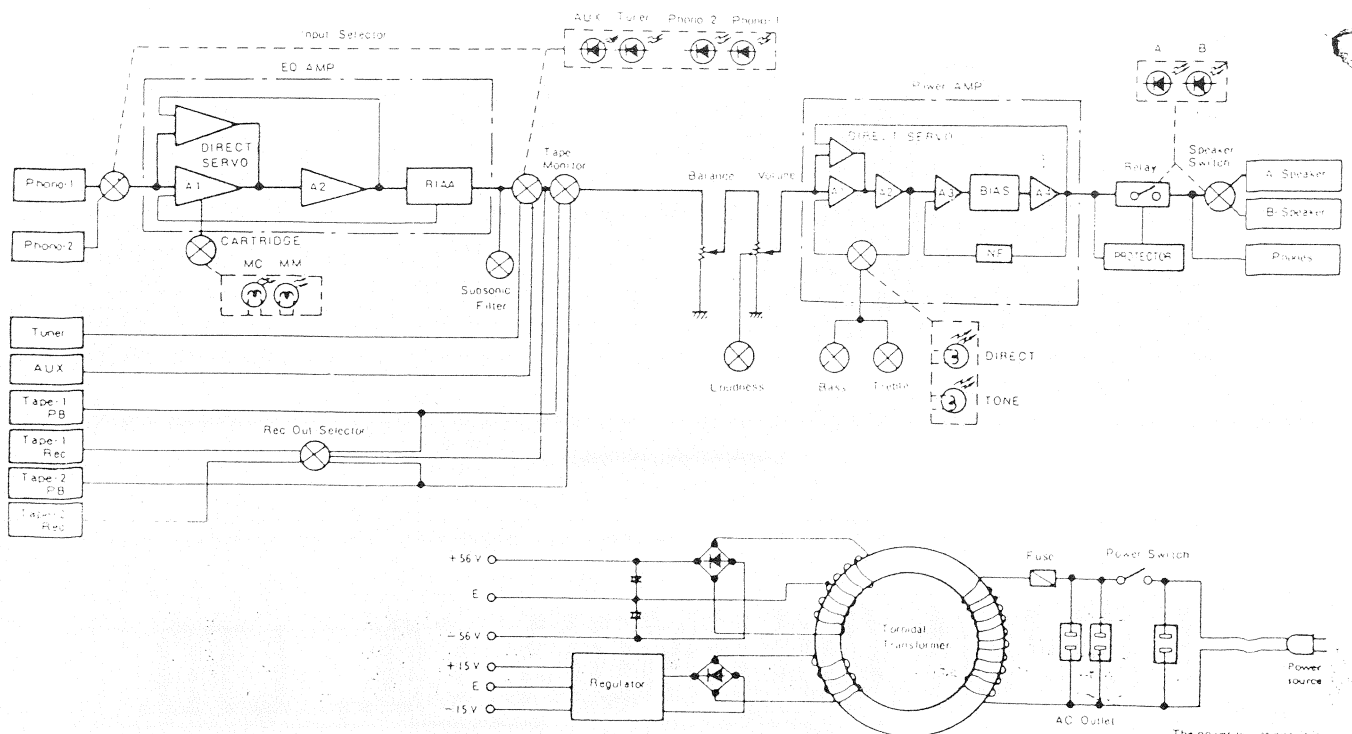
13.5 kg

Design and specifications are subject to change without prior notice

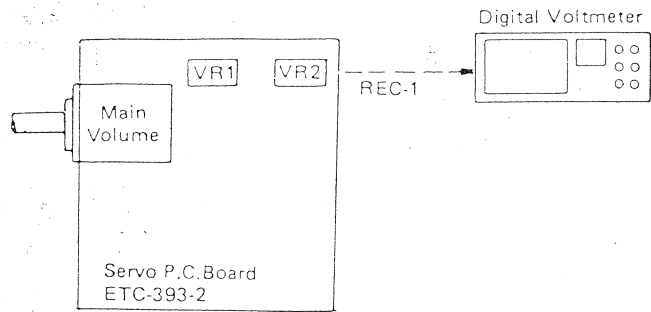
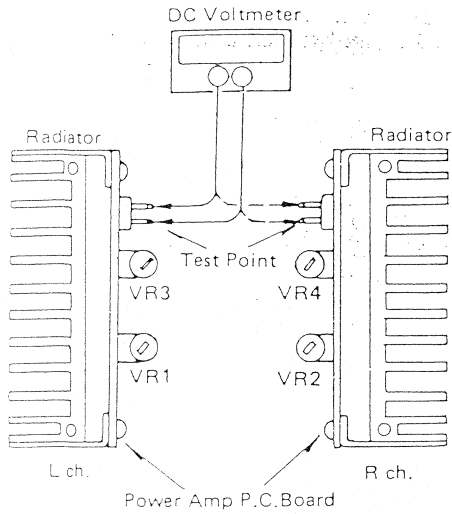
NOTE: The following codes correspond to the appropriate models.

E2 for Europe, EA for Australia, EK for U.K., EC for Canada, E3 for U.S.A.

BLOCK DIAGRAM



METHOD OF ADJUSTMENT



IDLE CURRENT ADJUSTMENT METHOD OF POWER AMP (PUX-028 PRINTED BOARD)

1. Place the unit in normal position, not sideways or tilted. Avoid too much ventilation, since the adjustment must be done where temperature is between 15°C and 30°C.
2. Set the switches on the unit as follows:

| | |
|-------------------|----------------------------------|
| Power | → OFF |
| Volume | → -∞ dB |
| Direct couple | → Direct |
| Speaker terminals | → No load (no speaker connected) |
3. Remove the top cover, and the VR1, VR2, VR3 and VR4 fully counterclockwise. Connect a DC voltmeter to the test points.
4. Plug in the AC cord to power outlet of: Europe 220 V (198 ~ 231 V); U.K. and Australia 240 V (216 ~ 252 V); Canada and U.S.A. 120 V (108 ~ 126 V); and turn the power on. Immediately (within one minute), turn VR1 and VR2 clockwise and adjust the test point voltage (VTP) to 7 ± 2 mV preliminarily.
5. After about two minutes of the above preliminary adjustment, adjust VR1 and VR2 so as VTP reads 10 ± 2 mV.
6. Adjust VR3 and VR4 so as VTP reads 25 ± 2 mV preliminarily.

ADJUSTMENT OF SERVO (ETC-393-2 PRINTED BOARD)

PREPARATION

1. Insert short pins into PHONE input terminals.
2. Connect a digital voltmeter (0.01 mV ~ 1 mV DC range must be measurable) into each of REC. out terminals (L & R channels).
3. Set the FUNCTION switch to "PHONO-1" position and CARTRIDGE changeover switch to "MM" position and turn the main volume to MIN.

ADJUSTMENT

1. Turn POWER on and after two minutes warming-up conduct the following adjustments.
2. Adjust VR1 (100 kohm semi-solid volume), so as the L-channel digital voltmeter reads 0.5 mV DC or less.
3. Adjust VR2 (100 kohm semi-solid volume), so as the R-channel digital voltmeter reads 0.5 mV DC or less.

NOTE ON SERVICING REMOTE SWITCH

- (1) Hold the case when remove and install the speaker switch.

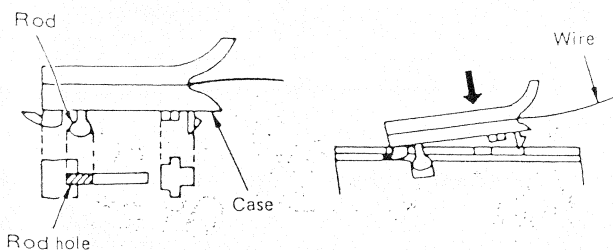


Fig. 1 How to install

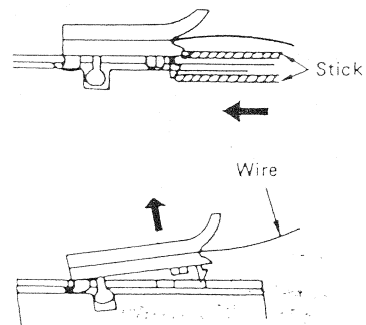


Fig. 2 How to remove

EXPLODED VIEW OF PARTS LIST

Note: See addendum list below for the Parts with asterisk (*) on the Ref. No. and the other Part not included in this list. Ref. No. in () for packing parts and not appear on the exploded view.

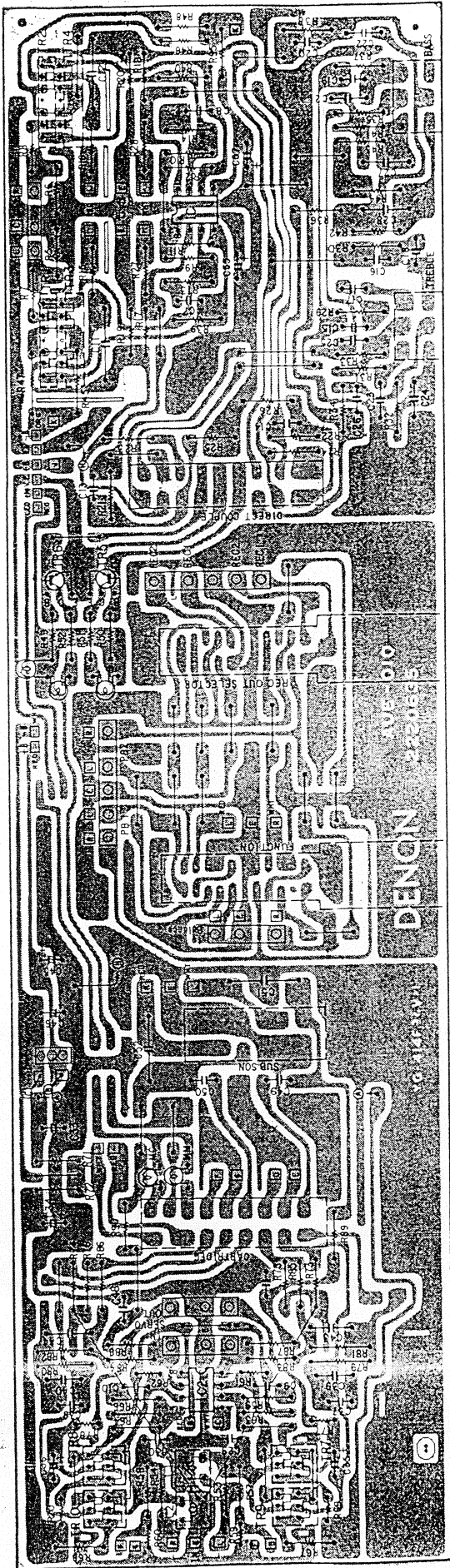
| Ref. No. | Part No. | Part Name & Descriptions | Ref. No. | Part No. | Part Name & Descriptions |
|---------------|-----------------------|-------------------------------------|---------------|-----------------------|---------------------------------|
| 1 | 4110251208 | MAIN CHASSIS ASS. | 44 | 4730455015 | TAPING SCREW (2) 4x10 |
| 2 | EP4772 | CORD HOLDER | 45 | 4120725106 | BOARD BRACKET |
| 3 | 4730354019 | TAPPING SCREW (2) 3x8 | 46 | MD-5271 | P.C.B. SUPPORT |
| 4 | 2546027008 | CHEMICON 22000 μ x2 63V | 47 | ETC-393B-1 | POWER SUPPLY UNIT |
| 5 | PUX-028-1 | POWER AMP (L) UNIT | 48 | 2124202012 | PUSH SWITCH |
| 6 | 4170125002 | POWER RADIATOR | 49 | 1440698107 | FRONT PANEL ASS. |
| 7 | 4700026005 | TAPPING SCREW (2) WITH WASHER 3x8 | 50 | - | - |
| 8 | 2710139049 | TRANSISTOR 2SA1146(R)/(O)LB | 51 | 1140054009 | PANEL BUSH |
| 9 | 4150175001 | WASHER | 52 | 1130217005 | PUSH KNOB ASS. |
| 10 | 4700012006 | CROSS PAN SCREW WITH S. WASHER 3x12 | 53 | 4630220007 | SPRING |
| 11 | 4120729005 | RADIATOR BRACKET (A) | 54 | 1190014002 | STOPPER |
| 12 | 4120730007 | RADIATOR BRACKET (B) | 55 | 1240029015 | FELT SHEET (A) |
| 13 | PUX-0282 | POWER AMP (R) UNIT | 56 | 1140055008 | PANEL BUSH |
| 14 | 2730241043 | TRANSISTOR 2SC2706(R)/(O)LB | 57 | ETC-392B6 | SP LED UNIT |
| 15 | 2710140025 | TRANSISTOR 2SA968(Y)/(O)LB110A | 58 | ETC-392B-7 | INPUT LED UNIT |
| 16 | 2730240028 | TRANSISTOR 2SC2238(Y)/(O)LB110A | 59 | 4610149001 | RUBBER SHEET |
| 17 | 4150052001 | INSULATING SHEET | 60 | 1460283107 | ESCUTCHEON PLATE |
| 18 | 4150171005 | WASHER | 61 | 1120265106 | KNOB (FOR MAIN VR) |
| 19 | 4140217102 | SHIELD BRACKET | 62 | 1120309004 | KNOB (FOR TONE & BALANCE) |
| 20 | 4730353010 | TAPPING SCREW (2) 3x6 | 63 | 1120308005 | KNOB (FOR TAPE) |
| *21 | 1050339005 | BACK PANEL | 64 | 1020103106 | TOP COVER |
| 22 | - | - | 65 | 1220069011 | SPACER |
| 23 | - | - | 66 | 1040034006 | STOPPER |
| 24 | 2050071016 | TERMINAL | 67 | 4734801005 | TAPPING SCREW (2) 4x8 |
| 25 | 4770018001 | WASHER | (68) | 5040064001 | CABINET SHEET |
| 26 | 2062016001 | AC CORD | (69) | 5030253000 | CUSHION |
| 27 | 4450020005 | CORD BUSH | * (70) | 5010647021 | CARTON CASE |
| 28 | ETC-392B-4 | HEADPHONE UNIT | * (71) | 5110803008 | INST. MANUAL |
| 29 | - | NUT 12mm SP | * (72) | - | - |
| 30 | 4711303018 | CROSS PAN SCREW 3x6 | * (73) | - | - |
| 31 | - | NUT 7mm SP | * (74) | - | - |
| 32 | - | TOOTH WASHER 7mm SP | * (75) | - | - |
| 33 | ETC-393B-2 | VR SERVO UNIT | 76 | 2518001007 | CAPACITOR 0.01 μ F 450V OIL |
| 34 | - | NUT 8mm SP | 77 | ETC-392B-1 | CAPACITOR |
| 35 | 4350051006 | FLEXIBLE SLIDER | 78 | 4770064107 | INPUT UNIT |
| 36 | ETC-393B-3 | POWER REC. UNIT | 79 | 4120726103 | FIXING SCREW |
| 37 | 2050125001 | EARTH PLATE | 80 | 4120727104 | FRONT CHASSIS |
| 38 | 4140218004 | SHIELD PLATE | 81 | 4120724107 | HEADPHONE BRACKET |
| 39 | 1050336202 | BOTTOM COVER | 82 | 4120726105 | 4P SWITCH BRACKET |
| 40 | 1048001002 | FOOT | 83 | AUE-010 | 3P SWITCH BRACKET |
| 41 | 4730355018 | TAPPING SCREW (2) 3x10 | 84 | AUE-010 | EQ. CONTROL UNIT |
| 42 | 4770096007 | PUSH RIVET | 85 | ETC-392B-2 | INPUT LED UNIT |
| 43 | 2335241008 | POWER TRANS. | *85 | 2061015087 | FUSE (4A) |
| | | | 86 | 2048070003 | 5P CONNECTOR (DIN) |

ADDENDUM LIST

| Ref. No. | Part Name & Descriptions | EF For France | EK For U.K | E3 For U.S.A |
|---------------|--------------------------|---------------------------------------|---------------------------------------|--|
| 21 | BACK PANEL | 1050339102 | 1050339102 | 1050349008 |
| 26 | ACCORD | 2062016001 | 2062020000 | 2062019008 |
| 27 | CORD BUSH | 4450020005 | MD-2982H | MD-3802 |
| 43 | POWER TRANS. | 2335241008 | 2335246003 | 2335257005 |
| 48 | PUSH SWITCH | 2124202012 | 2124202012 | 2124202025 |
| 70 | CARTON CASE | 5010647089 | 5010647089 | 5010647089 |
| (72) | GUARANTEE CARD | 5150183... | 5150230000 | - |
| (73) | IMPORTANT LABEL | - | 5130372001 | - |
| (74) | CAUTION SHEET | - | 5130364006 | - |
| (75) | FUSE LABEL | 5130159185 | 5130159185 | - |
| 76 | CAPACITOR | 2518001007 OIL CAP | 2518001007 OIL CAP | 2568005121 METALIZ. |
| | | 0.01μF 450V | 0.01μF 450V | ED: 0.022μF 150V |
| 76 | AC SOCKET | | | 2032052008 |
| | 3mm TOOTH WASHER | - | 4753001051 | - |
| | 3T LUG | - | 2050003000 | - |
| | EARTH LABEL | - | 5130140000 | - |
| | VOLTAGE LABEL | - | 5130362008 | - |
| | S. NO. PLATE | - | - | - |
| | 4mm TOOTH WASHER | - | 4753100004 | 5130398153 |
| 85 | FUSE (TIMELOG TYPE) | 2061015087 (4A) | 2061015087 (4A) | 2061023095 (8A) |

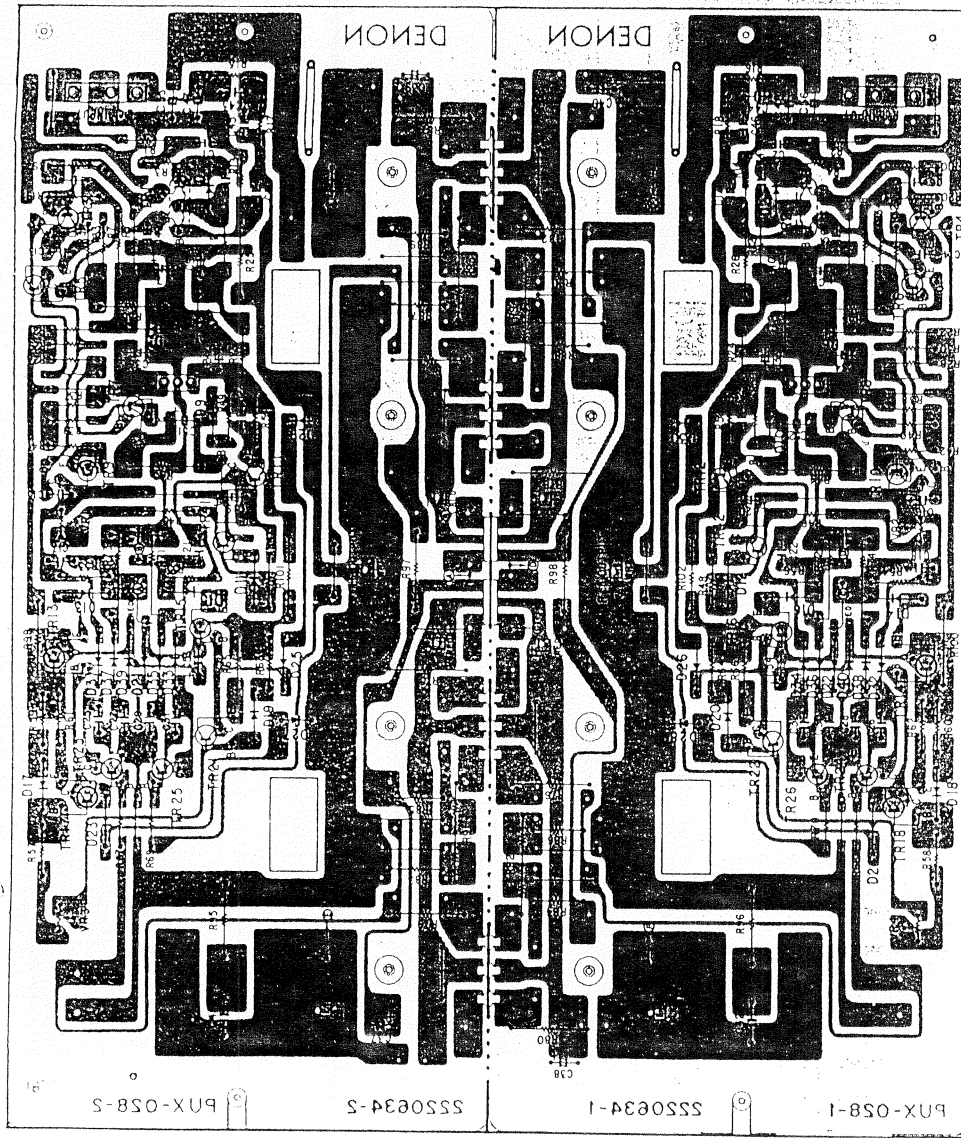
PRINTED CIRCUIT BOARD PATTERNS AND PARTS LIST

AUE-010 EQ. CONTROL UNIT



AUE-010 PARTS LIST

| Ref. No. | Part No. | Part Name & Descriptions | |
|----------------|------------|---|-------------------------------------|
| SEMICONDUCTORS | | | |
| IC01 | 2630118001 | NJM4560D | INTEGRATED CIRCUIT |
| IC02 | 2630118014 | NJM4560DD | INTEGRATED CIRCUIT |
| TR01 | 2750024033 | μ PA68H(M/L) | FIELD EFFECT TRANSISTOR (DUAL TYPE) |
| TR02 | 2750024033 | μ PA68H(M/L) | FIELD EFFECT TRANSISTOR (DUAL TYPE) |
| TR03 | 2750024033 | μ PA68H(M/L) | FIELD EFFECT TRANSISTOR (DUAL TYPE) |
| TR04 | 2750024033 | μ PA68H(M/L) | FIELD EFFECT TRANSISTOR (DUAL TYPE) |
| TR05 | 2730111063 | 2SC1213(D)/(C) | TRANSISTOR |
| TR06 | 2730111063 | 2SC1213(D)/(C) | TRANSISTOR |
| TR07 | 2750029009 | 2SK240(BL)/V | FIELD EFFECT TRANSISTOR (DUAL TYPE) |
| TR08 | 2750029009 | 2SK240(BL)/V | FIELD EFFECT TRANSISTOR (DUAL TYPE) |
| TR09 | 2750029009 | 2SK240(BL)/V | FIELD EFFECT TRANSISTOR (DUAL TYPE) |
| TR10 | 2750029009 | 2SK240(BL)/V | FIELD EFFECT TRANSISTOR (DUAL TYPE) |
| COILS | | | |
| L01 | 2318017000 | INDUCTOR | |
| L02 | 2318017000 | INDUCTOR | |
| RESISTORS | | | |
| R05 | 2412292909 | 510 kohm \pm 5% $\frac{1}{4}$ W FIXED CARBON FILM | |
| R06 | 2412292909 | 510 kohm \pm 5% $\frac{1}{4}$ W FIXED CARBON FILM | |
| R07 | 2412219908 | 470 ohm \pm 5% $\frac{1}{4}$ W FIXED CARBON FILM | |
| R08 | 2412219908 | 470 ohm \pm 5% $\frac{1}{4}$ W FIXED CARBON FILM | |
| R09 | 2412239904 | 3.3 kohm \pm 5% $\frac{1}{4}$ W FIXED CARBON FILM | |
| R10 | 2412239904 | 3.3 kohm \pm 5% $\frac{1}{4}$ W FIXED CARBON FILM | |
| R11 | 2412239904 | 3.3 kohm \pm 5% $\frac{1}{4}$ W FIXED CARBON FILM | |
| R12 | 2412239904 | 3.3 kohm \pm 5% $\frac{1}{4}$ W FIXED CARBON FILM | |
| R13 | 2412215902 | 330 ohm \pm 5% $\frac{1}{4}$ W FIXED CARBON FILM | |
| R14 | 2412215902 | 330 ohm \pm 5% $\frac{1}{4}$ W FIXED CARBON FILM | |
| R15 | 2412275900 | 100 kohm \pm 5% $\frac{1}{4}$ W FIXED CARBON FILM | |
| R16 | 2412275900 | 100 kohm \pm 5% $\frac{1}{4}$ W FIXED CARBON FILM | |
| R17 | 2412299902 | 1M ohm \pm 5% $\frac{1}{4}$ W FIXED CARBON FILM | |
| R18 | 2412299902 | 1M ohm \pm 5% $\frac{1}{4}$ W FIXED CARBON FILM | |
| R19 | 2412275900 | 100 kohm \pm 5% $\frac{1}{4}$ W FIXED CARBON FILM | |
| R20 | 2412275900 | 100 kohm \pm 5% $\frac{1}{4}$ W FIXED CARBON FILM | |
| R21 | 2412252907 | 11 kohm \pm 5% $\frac{1}{4}$ W FIXED CARBON FILM | |
| R22 | 2412252907 | 11 kohm \pm 5% $\frac{1}{4}$ W FIXED CARBON FILM | |
| R23 | 2412252907 | 11 kohm \pm 5% $\frac{1}{4}$ W FIXED CARBON FILM | |
| R24 | 2412252907 | 11 kohm \pm 5% $\frac{1}{4}$ W FIXED CARBON FILM | |
| R25 | 2412227903 | 1 kohm \pm 5% $\frac{1}{4}$ W FIXED CARBON FILM | |
| R26 | 2412227903 | 1 kohm \pm 5% $\frac{1}{4}$ W FIXED CARBON FILM | |
| R27 | 2412203901 | 100 ohm \pm 5% $\frac{1}{4}$ W FIXED CARBON FILM | |
| R28 | 2412203901 | 100 ohm \pm 5% $\frac{1}{4}$ W FIXED CARBON FILM | |
| R29 | 2412245901 | 5.6 kohm \pm 5% $\frac{1}{4}$ W FIXED CARBON FILM | |
| R30 | 2412245901 | 5.6 kohm \pm 5% $\frac{1}{4}$ W FIXED CARBON FILM | |
| R31 | 2412271904 | 68 kohm \pm 5% $\frac{1}{4}$ W FIXED CARBON FILM | |
| R32 | 2412271904 | 68 kohm \pm 5% $\frac{1}{4}$ W FIXED CARBON FILM | |
| R33 | 2412236907 | 2.4 kohm \pm 5% $\frac{1}{4}$ W FIXED CARBON FILM | |
| R34 | 2412236907 | 2.4 kohm \pm 5% $\frac{1}{4}$ W FIXED CARBON FILM | |
| R35 | 2412227903 | 1 kohm \pm 5% $\frac{1}{4}$ W FIXED CARBON FILM | |
| R36 | 2412227903 | 1 kohm \pm 5% $\frac{1}{4}$ W FIXED CARBON FILM | |
| R37 | 2412262900 | 30 kohm \pm 5% $\frac{1}{4}$ W FIXED CARBON FILM | |
| R38 | 2412262900 | 30 kohm \pm 5% $\frac{1}{4}$ W FIXED CARBON FILM | |
| R39 | 2412215902 | 330 ohm \pm 5% $\frac{1}{4}$ W FIXED CARBON FILM | |
| R40 | 2412215902 | 330 ohm \pm 5% $\frac{1}{4}$ W FIXED CARBON FILM | |
| R41 | 2412279906 | 150 kohm \pm 5% $\frac{1}{4}$ W FIXED CARBON FILM | |
| R42 | 2412279906 | 150 kohm \pm 5% $\frac{1}{4}$ W FIXED CARBON FILM | |



PUX-028 PARTS LIST

| Ref. No. | Part No. | Part Name & Descriptions | Ref. No. | Part No. | Part Name & Descriptions |
|----------------|------------|--------------------------|----------|------------|--------------------------|
| SEMICONDUCTORS | | | | | |
| TR01 | 2730181019 | 2SC1583(G)/F | TR07 | 2710110000 | 2SA916(L) TRANSISTOR |
| TR02 | 2730181019 | 2SC1583(G)/F | TR08 | 2710110000 | 2SA916(L) TRANSISTOR |
| TR03 | 2730198002 | 2SC1815(Y) | TR09 | 2710110000 | 2SA916(L) TRANSISTOR |
| TR04 | 2730198002 | 2SC1815(Y) | TR10 | 2710110000 | 2SA916(L) TRANSISTOR |
| TR05 | 2730198002 | 2SC1815(Y) | TR11 | 2730205005 | 2SC1941(L) TRANSISTOR |
| TR06 | 2730198002 | 2SC1815(Y) | TR12 | 2730205005 | 2SC1941(L) TRANSISTOR |
| | | | TR13 | 2730198002 | 2SC1815(Y) TRANSISTOR |
| | | | TR14 | 2730198002 | 2SC1815(Y) TRANSISTOR |

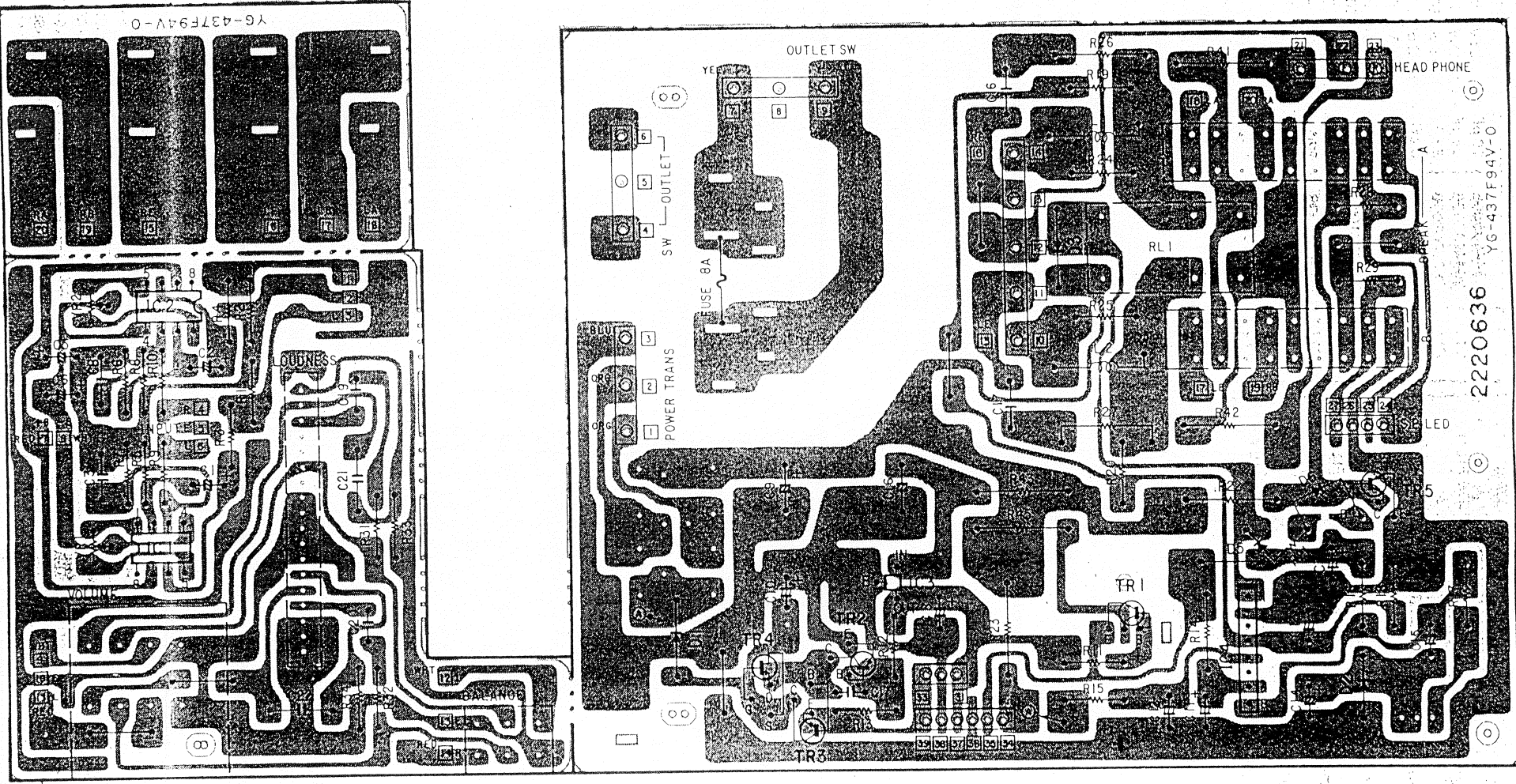
| Ref. No. | Part No. | Part Name & Descriptions | Ref. No. | Part No. | Part Name & Descriptions |
|----------|------------|---------------------------|----------|------------|---|
| TR15 | 2710102005 | 2SA1015(Y) TRANSISTOR | R17 | 2420203003 | 10M ohm ±10% 1/4W FIXED CARBON COMPOSIT |
| TR16 | 2710102005 | 2SA1015(Y) TRANSISTOR | R18 | 2420203003 | 10M ohm ±10% 1/4W FIXED CARBON COMPOSIT |
| TR17 | 2710102005 | 2SA1015(Y) TRANSISTOR | R19 | 2412211906 | 220 ohm ±5% 1/4W FIXED CARBON FILM |
| TR18 | 2710102005 | 2SA1015(Y) TRANSISTOR | R20 | 2412211906 | 220 ohm ±5% 1/4W FIXED CARBON FILM |
| TR21 | 2730198002 | 2SC1815(Y) TRANSISTOR | R21 | 2412248908 | 7.5 kohm ±5% 1/4W FIXED CARBON FILM |
| TR22 | 2730198002 | 2SC1815(Y) TRANSISTOR | R22 | 2412248908 | 7.5 kohm ±5% 1/4W FIXED CARBON FILM |
| TR23 | 2730111063 | 2SC1213(D)/(C) TRANSISTOR | R23 | 2412248908 | 7.5 kohm ±5% 1/4W FIXED CARBON FILM |
| TR24 | 2730111063 | 2SC1213(D)/(C) TRANSISTOR | R24 | 2412248908 | 7.5 kohm ±5% 1/4W FIXED CARBON FILM |
| TR25 | 2710040073 | 2SA673A(D)/(C) TRANSISTOR | R25 | 2440053026 | 10 kohm ±5% 1W FIXED METAL OXIDE FILM |
| TR26 | 2710040073 | 2SA673A(D)/(C) TRANSISTOR | R26 | 2440053026 | 10 kohm ±5% 1W FIXED METAL OXIDE FILM |
| TR41 | 2730198015 | 2SC1815(BL) TRANSISTOR | R27 | 2442007012 | 330 ohm ±5% 1/4W FIXED METAL OXIDE FILM |
| TR42 | 2730198015 | 2SC1815(BL) TRANSISTOR | R28 | 2442007012 | 330 ohm ±5% 1/4W FIXED METAL OXIDE FILM |
| D01 | 2760049008 | 1S2076 DIODE | R29 | 2442007012 | 330 ohm ±5% 1/4W FIXED METAL OXIDE FILM |
| D02 | 2760049008 | 1S2076 DIODE | R30 | 2442007012 | 330 ohm ±5% 1/4W FIXED METAL OXIDE FILM |
| D05 | 2760220018 | HZ24-1 DIODE | R31 | 2412195909 | 47 ohm ±5% 1/4W FIXED CARBON FILM |
| D06 | 2760220018 | HZ24-1 DIODE | R32 | 2412195909 | 47 ohm ±5% 1/4W FIXED CARBON FILM |
| D07 | 2760220018 | HZ24-1 DIODE | R33 | 2412195909 | 47 ohm ±5% 1/4W FIXED CARBON FILM |
| D08 | 2760220018 | HZ24-1 DIODE | R34 | 2412195909 | 47 ohm ±5% 1/4W FIXED CARBON FILM |
| D09 | 2760171028 | HV-23(YL) DIODE | R35 | 2410193000 | 2.2 kohm ±5% 1/4W FIXED CARBON FILM |
| D10 | 2760171028 | HV-23(YL) DIODE | R36 | 2410193000 | 2.2 kohm ±5% 1/4W FIXED CARBON FILM |
| D11 | 2760171028 | HV-23(YL) DIODE | R37 | 2442022013 | 51 ohm ±5% 1/4W FIXED METAL OXIDE FILM |
| D12 | 2760171028 | HV-23(YL) DIODE | R38 | 2442022013 | 51 ohm ±5% 1/4W FIXED METAL OXIDE FILM |
| D13 | 2760049011 | 1S2076A DIODE | R39 | 2412179909 | 10 ohm ±5% 1/4W FIXED CARBON FILM |
| D14 | 2760049011 | 1S2076A DIODE | R40 | 2412179909 | 10 ohm ±5% 1/4W FIXED CARBON FILM |
| D15 | 2760049011 | 1S2076A DIODE | R41 | 2412179909 | 10 ohm ±5% 1/4W FIXED CARBON FILM |
| D16 | 2760049011 | 1S2076A DIODE | R42 | 2412179909 | 10 ohm ±5% 1/4W FIXED CARBON FILM |
| D17 | 2760049008 | 1S2076 DIODE | R43 | 2440070029 | 5.6 kohm ±5% 1W FIXED METAL OXIDE FILM |
| D18 | 2760049008 | 1S2076 DIODE | R44 | 2440070029 | 5.6 kohm ±5% 1W FIXED METAL OXIDE FILM |
| D19 | 2760049008 | 1S2076 DIODE | R45 | 2412235908 | 2.2 kohm ±5% 1W FIXED CARBON FILM |
| D20 | 2760049008 | 1S2076 DIODE | R46 | 2412235908 | 2.2 kohm ±5% 1W FIXED CARBON FILM |
| D21 | 2760254000 | HZ7B-3 DIODE | R47 | 2412235908 | 2.2 kohm ±5% 1W FIXED CARBON FILM |
| D22 | 2760254000 | HZ7B-3 DIODE | R48 | 2412235908 | 2.2 kohm ±5% 1W FIXED CARBON FILM |
| D23 | 2760049008 | 1S2076 DIODE | R49 | 2412203901 | 100 ohm ±5% 1/4W FIXED CARBON FILM |
| D24 | 2760049008 | 1S2076 DIODE | R50 | 2412203901 | 100 ohm ±5% 1/4W FIXED CARBON FILM |
| D25 | 2760049008 | 1S2076 DIODE | R51 | 2412203901 | 100 ohm ±5% 1/4W FIXED CARBON FILM |
| D26 | 2760049008 | 1S2076 DIODE | R52 | 2412203901 | 100 ohm ±5% 1/4W FIXED CARBON FILM |
| D27 | 2760132041 | STV-3H(G) DIODE | R53 | 2442022000 | 1 kohm ±5% 1/4W FIXED METAL OXIDE FILM |
| D28 | 2760132041 | STV-3H(G) DIODE | R54 | 2442022000 | 1 kohm ±5% 1/4W FIXED METAL OXIDE FILM |
| D29 | 2760132041 | STV-3H(G) DIODE | R55 | 2442022000 | 1 kohm ±5% 1/4W FIXED METAL OXIDE FILM |
| D30 | 2760132041 | STV-3H(G) DIODE | R56 | 2442022000 | 1 kohm ±5% 1/4W FIXED METAL OXIDE FILM |
| D31 | 2760049011 | 1S2076A DIODE | R57 | 2412203901 | 100 ohm ±5% 1/4W FIXED METAL OXIDE FILM |
| D32 | 2760049011 | 1S2076A DIODE | R58 | 2412203901 | 100 ohm ±5% 1/4W FIXED METAL OXIDE FILM |
| D33 | 2760049011 | 1S2076A DIODE | R59 | 2412235908 | 2.2 kohm ±5% 1/4W FIXED CARBON FILM |
| D34 | 2760049011 | 1S2076A DIODE | R60 | 2412235908 | 2.2 kohm ±5% 1/4W FIXED CARBON FILM |
| D35 | 2760049011 | 1S2076A DIODE | R61 | 2412211906 | 2.2 kohm ±5% 1/4W FIXED CARBON FILM |
| D36 | 2760049011 | 1S2076A DIODE | R62 | 2412211906 | 2.2 kohm ±5% 1/4W FIXED CARBON FILM |
| D37 | 2760049011 | 1S2076A DIODE | R63 | 2412235908 | 2.2 kohm ±5% 1/4W FIXED CARBON FILM |
| D38 | 2760049011 | 1S2076A DIODE | R64 | 2412235908 | 2.2 kohm ±5% 1/4W FIXED CARBON FILM |
| D39 | 2760254000 | HZ7B-3 DIODE | R65 | 2412211906 | 2.2 kohm ±5% 1/4W FIXED CARBON FILM |
| D40 | 2760254000 | HZ7B-3 DIODE | R66 | 2412211906 | 2.2 kohm ±5% 1/4W FIXED CARBON FILM |
| | | | R67 | 2442007067 | 120 ohm ±5% 1/4W FIXED METAL OXIDE FILM |
| | | | R68 | 2442007067 | 120 ohm ±5% 1/4W FIXED METAL OXIDE FILM |

(Cont.)

| Ref. No. | Part No. | Part Name & Descriptions |
|------------|------------|--|
| R69 | 2442007067 | 120 ohm ±5% ¼W FIXED METAL OXIDE FILM |
| R70 | 2442007067 | 120 ohm ±5% ¼W FIXED METAL OXIDE FILM |
| R71 | 2440041025 | 1 kohm ±5% 1W FIXED METAL OXIDE FILM |
| R72 | 2440041025 | 1 kohm ±5% 1W FIXED METAL OXIDE FILM |
| R73 | 2440041025 | 1 kohm ±5% 1W FIXED METAL OXIDE FILM |
| R74 | 2440041025 | 1 kohm ±5% 1W FIXED METAL OXIDE FILM |
| R75 | 2440013024 | 4.7 ohm ±5% 1W FIXED METAL OXIDE FILM |
| R76 | 2440013024 | 4.7 ohm ±5% 1W FIXED METAL OXIDE FILM |
| R77 | 2440013024 | 4.7 ohm ±5% 1W FIXED METAL OXIDE FILM |
| R78 | 2440013024 | 4.7 ohm ±5% 1W FIXED METAL OXIDE FILM |
| R79 | 2440013024 | 4.7 ohm ±5% 1W FIXED METAL OXIDE FILM |
| R80 | 2440013024 | 4.7 ohm ±5% 1W FIXED METAL OXIDE FILM |
| R81 | 2440013024 | 4.7 ohm ±5% 1W FIXED METAL OXIDE FILM |
| R82 | 2440013024 | 4.7 ohm ±5% 1W FIXED METAL OXIDE FILM |
| R83 | 2412191903 | 33 ohm ±5% ¼W FIXED CARBON FILM |
| R84 | 2412191903 | 33 ohm ±5% ¼W FIXED CARBON FILM |
| R85 | 2412191903 | 33 ohm ±5% ¼W FIXED CARBON FILM |
| R86 | 2412191903 | 33 ohm ±5% ¼W FIXED CARBON FILM |
| R87 | 2412191903 | 33 ohm ±5% ¼W FIXED CARBON FILM |
| R88 | 2412191903 | 33 ohm ±5% ¼W FIXED CARBON FILM |
| R89 | 2412191903 | 33 ohm ±5% ¼W FIXED CARBON FILM |
| R90 | 2412191903 | 33 ohm ±5% ¼W FIXED CARBON FILM |
| R91 | 2432026003 | 0.47 ohm ±10% 3.15W FIXED WIRE WOUND |
| R92 | 2432026003 | 0.47 ohm ±10% 3.15W FIXED WIRE WOUND |
| R93 | 2432026003 | 0.47 ohm ±10% 3.15W FIXED WIRE WOUND |
| R94 | 2432026003 | 0.47 ohm ±10% 3.15W FIXED WIRE WOUND |
| R95 | 2440022028 | 27 ohm ±10% 1W FIXED METAL OXIDE FILM |
| R96 | 2440022028 | 27 ohm ±10% 1W FIXED METAL OXIDE FILM |
| R97 | 2440029021 | 100 ohm ±10% 1W FIXED METAL OXIDE FILM |
| R98 | 2440029021 | 100 ohm ±10% 1W FIXED METAL OXIDE FILM |
| R99 | 2440051026 | 6.8 kohm ±10% 1W FIXED METAL OXIDE FILM |
| 100 | 2440051026 | 6.8 kohm ±10% 1W FIXED METAL OXIDE FILM |
| 101 | 2440051026 | 6.8 kohm ±10% 1W FIXED METAL OXIDE FILM |
| 102 | 2440051026 | 6.8 kohm ±10% 1W FIXED METAL OXIDE FILM |
| CAPACITORS | | |
| 101 | 2554121006 | 100 pF ±5% 50V FIXED PLASTIC FILM |
| 102 | 2554121006 | 100 pF ±5% 50V FIXED PLASTIC FILM |
| 103 | 2554145008 | 0.001 μF ±5% 50V FIXED PLASTIC FILM |
| 104 | 2554145008 | 0.001 μF ±5% 50V FIXED PLASTIC FILM |
| 105 | 2554161008 | 0.0047 μF ±5% 50V FIXED PLASTIC FILM |
| 106 | 2554161008 | 0.0047 μF ±5% 50V FIXED PLASTIC FILM |
| 107 | 2544035005 | 10 μF 35V FIXED ELECTROLYTIC |
| 108 | 2544035005 | 10 μF 35V FIXED ELECTROLYTIC |

| Ref. No. | Part No. | Part Name & Descriptions |
|-------------|------------|--------------------------------------|
| C09 | 2544035005 | 10 μF 35V FIXED ELECTROLYTIC |
| C10 | 2544035005 | 10 μF 35V FIXED ELECTROLYTIC |
| C11 | 2521008000 | 8 pF ±0.5 pF 50V FIXED MICA FILM |
| C12 | 2521008000 | 8 pF ±0.5 pF 50V FIXED MICA FILM |
| C13 | 2521018003 | 22 pF ±5% 50V FIXED MICA FILM |
| C14 | 2521018003 | 22 pF ±5% 50V FIXED MICA FILM |
| C15 | 2521081001 | 7 pF ±0.5 pF 500V FIXED MICA FILM |
| C16 | 2521081001 | 7 pF ±0.5 pF 500V FIXED MICA FILM |
| C17 | 2554129008 | 220 pF ±5% 50V FIXED PLASTIC FILM |
| C18 | 2554129008 | 220 pF ±5% 50V FIXED PLASTIC FILM |
| C19 | 2544060025 | 1 μF 100V FIXED ELECTROLYTIC |
| C20 | 2544060025 | 1 μF 100V FIXED ELECTROLYTIC |
| C21 | 2554129008 | 220 pF ±5% 50V FIXED PLASTIC FILM |
| C22 | 2554129008 | 220 pF ±5% 50V FIXED PLASTIC FILM |
| C23 | 2554121006 | 100 pF ±5% 50V FIXED PLASTIC FILM |
| C24 | 2554121006 | 100 pF ±5% 50V FIXED PLASTIC FILM |
| C25 | 2554161008 | 0.0047 μF ±5% 50V FIXED PLASTIC FILM |
| C26 | 2554161008 | 0.0047 μF ±5% 50V FIXED PLASTIC FILM |
| C27 | 2554161008 | 0.0047 μF ±5% 50V FIXED PLASTIC FILM |
| C28 | 2554161008 | 0.0047 μF ±5% 50V FIXED PLASTIC FILM |
| C29 | 2554161008 | 0.0047 μF ±5% 50V FIXED PLASTIC FILM |
| C30 | 2554161008 | 0.0047 μF ±5% 50V FIXED PLASTIC FILM |
| C31 | 2554161008 | 0.0047 μF ±5% 50V FIXED PLASTIC FILM |
| C32 | 2554161008 | 0.0047 μF ±5% 50V FIXED PLASTIC FILM |
| C33 | 2544059036 | 4.7 μF 63V FIXED ELECTROLYTIC |
| C34 | 2544059036 | 4.7 μF 63V FIXED ELECTROLYTIC |
| C35 | 2544059036 | 4.7 μF 63V FIXED ELECTROLYTIC |
| C36 | 2544059036 | 4.7 μF 63V FIXED ELECTROLYTIC |
| C37 | 2544059036 | 4.7 μF 63V FIXED ELECTROLYTIC |
| C38 | 2544059036 | 4.7 μF 63V FIXED ELECTROLYTIC |
| C39 | 2544059036 | 4.7 μF 63V FIXED ELECTROLYTIC |
| C40 | 2544059036 | 4.7 μF 63V FIXED ELECTROLYTIC |
| C41 | 2554169000 | 0.01 μF ±5% 50V FIXED PLASTIC FILM |
| C42 | 2554169000 | 0.01 μF ±5% 50V FIXED PLASTIC FILM |
| C43 | 2521005003 | 5 pF ±0.5 pF 50V FIXED MICA FILM |
| C44 | 2521005003 | 5 pF ±0.5 pF 50V FIXED MICA FILM |
| C45 | 2521081014 | 1 pF ±0.5 pF 500V FIXED MICA FILM |
| C46 | 2521081014 | 1 pF ±0.5 pF 500V FIXED MICA FILM |
| C47 | 2521014007 | 15 pF ±0.5 pF 50V FIXED MICA FILM |
| C48 | 2521014007 | 15 pF ±0.5 pF 50V FIXED MICA FILM |
| C49 | 2521010001 | 10 pF ±0.5 pF 50V FIXED MICA FILM |
| C50 | 2521010001 | 10 pF ±0.5 pF 50V FIXED MICA FILM |
| C51 | 2544060025 | 1 μF 100V FIXED ELECTROLYTIC |
| C52 | 2544060025 | 1 μF 100V FIXED ELECTROLYTIC |
| C53 | 2544044009 | 1 μF 50V FIXED ELECTROLYTIC |
| C54 | 2544044009 | 1 μF 50V FIXED ELECTROLYTIC |
| C55 | 2544044009 | 1 μF 50V FIXED ELECTROLYTIC |
| C56 | 2544044009 | 1 μF 50V FIXED ELECTROLYTIC |
| OTHER PARTS | | |
| VR01 | 2220634005 | P.W. BOARD |
| VR02 | 2090042908 | 0.6 JUMPER WIRE USED 16 |
| VR03 | 2090008117 | JUMPER SHORT LEAD P=12.5mm USED 8 |
| VR04 | 2050075025 | 2P. TERMINAL USED 2 |
| | 2050122033 | 3P. CONNECTOR PIN ASS. |
| | 2035622008 | 3P. CONNECTOR BASE |
| | 2116014014 | SEMI FIXED RESISTOR 1 kohm |
| | 2116014014 | SEMI FIXED RESISTOR 1 kohm |
| | 2116014030 | SEMI FIXED RESISTOR 100 kohm |
| | 2116014030 | SEMI FIXED RESISTOR 100 kohm |
| | 2030200030 | 1P. CONTACT (D) ASS FOR EAR TH |
| | 2030208016 | 1P. CONTACT (D) ASS FOR Ld-B |
| | 2030208029 | 1P. CONTACT (D) ASS FOR Rd-B |
| | 2030207017 | 1P. CONTACT (D) ASS FOR Ld+B |
| | 2030207020 | 1P. CONTACT (D) ASS FOR Rd+B |
| | 2030207033 | 1P. CONTACT (D) ASS FOR Rdout |
| | 2030199015 | 1P. CONTACT (D) ASS FOR Ldout |

2220636 YG-437F94V-0



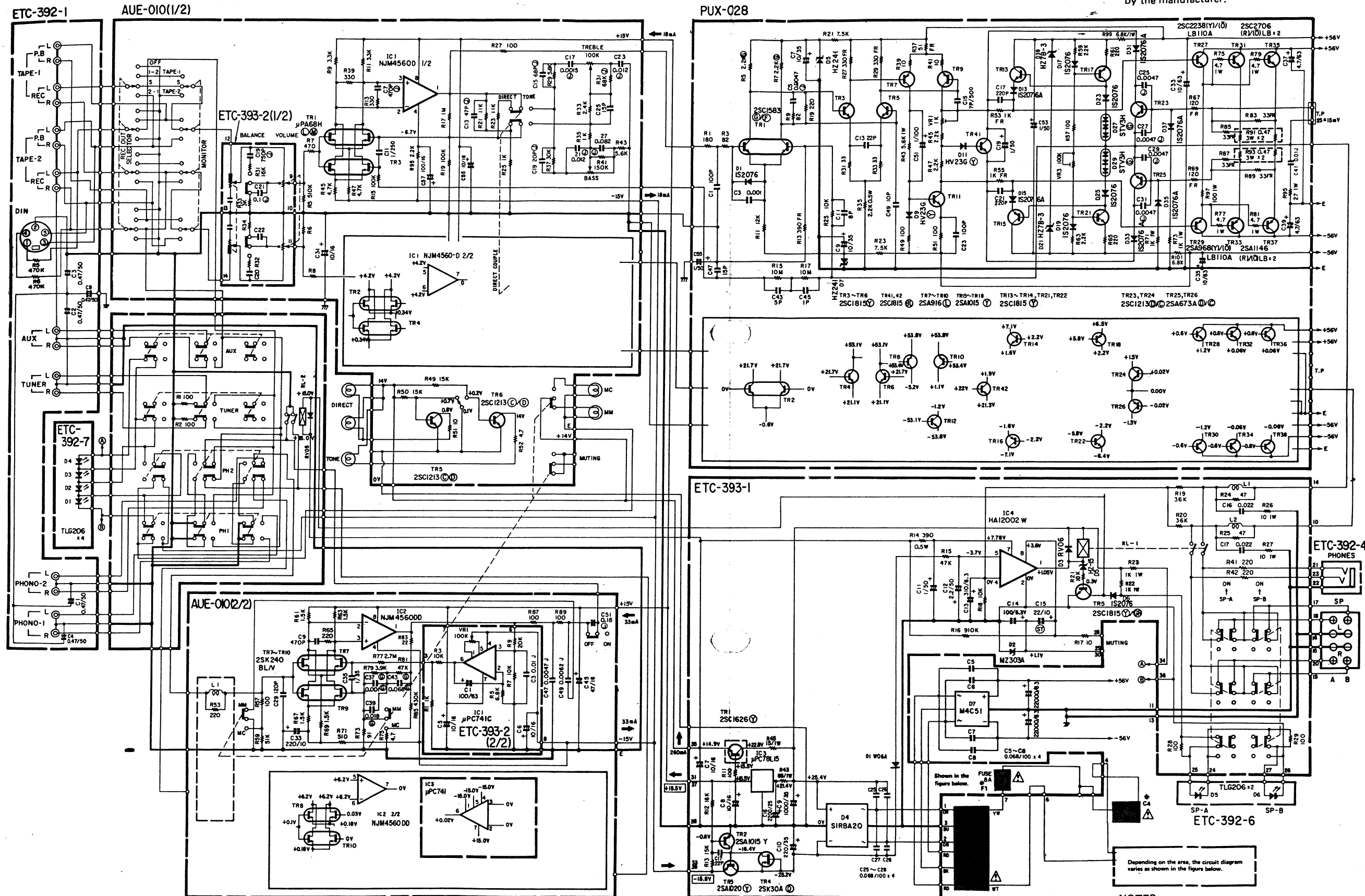
ETC-393B PARTS LIST

| Ref. No. | Part No. | Part Name & Descriptions | |
|-----------------------|------------|-----------------------------------|-----------------------------|
| SEMICONDUCTORS | | | |
| IC01 | 2630133002 | μ PC741C | INTEGRATED CIRCUIT |
| IC02 | 2630133002 | μ PC741C | INTEGRATED CIRCUIT |
| IC03 | 2630138007 | μ PC78L15A | INTEGRATED CIRCUIT |
| IC04 | 2630102004 | HA12002W | INTEGRATED CIRCUIT |
| TR01 | 2730177007 | 2SC1626(Y) | TRANSISTOR |
| TR02 | 2710102005 | 2SA1015(Y) | TRANSISTOR |
| TR03 | 2710117003 | 2SA1020(Y) | TRANSISTOR |
| TR04 | 2750018009 | 2SK30A(D) | FOR FIELD EFFECT TRANSISTOR |
| TR05 | 2730198044 | 2SC1815(Y)/(R) | FOR FIELD EFFECT TRANSISTOR |
| D01 | 2760158 | W06A | DIODE |
| D02 | 2760244007 | MZ230 | DIODE |
| D03 | 2760237001 | RV06 | DIODE |
| D04 | 2760239009 | S1RBA20F | DIODE |
| RESISTORS | | | |
| R01 | 2412229903 | 1 kohm \pm 5% $\frac{1}{4}$ W | FIXED CARBON FILM |
| R02 | 2412229903 | 1 kohm \pm 5% $\frac{1}{4}$ W | FIXED CARBON FILM |
| R03 | 2412251908 | 10 kohm \pm 5% $\frac{1}{4}$ W | FIXED CARBON FILM |
| R04 | 2412251908 | 10 kohm \pm 5% $\frac{1}{4}$ W | FIXED CARBON FILM |
| R05 | 2412247909 | 6.8 kohm \pm 5% $\frac{1}{4}$ W | FIXED CARBON FILM |
| R06 | 2412247909 | 6.8 kohm \pm 5% $\frac{1}{4}$ W | FIXED CARBON FILM |
| R07 | 2412251908 | 10 kohm \pm 5% $\frac{1}{4}$ W | FIXED CARBON FILM |
| R08 | 2412251908 | 10 kohm \pm 5% $\frac{1}{4}$ W | FIXED CARBON FILM |
| R09 | 2412258901 | 20 kohm \pm 5% $\frac{1}{4}$ W | FIXED CARBON FILM |
| R10 | 2412258901 | 20 kohm \pm 5% $\frac{1}{4}$ W | FIXED CARBON FILM |
| R11 | 2412203901 | 100 ohm \pm 5% $\frac{1}{4}$ W | FIXED CARBON FILM |
| R12 | 2412256903 | 16 kohm \pm 5% $\frac{1}{4}$ W | FIXED CARBON FILM |
| R13 | 2412255904 | 15 kohm \pm 5% $\frac{1}{4}$ W | FIXED CARBON FILM |
| R14 | 2410175002 | 390 ohm \pm 5% $\frac{1}{4}$ W | FIXED CARBON FILM |
| R15 | 2412242903 | 4.7 kohm \pm 5% $\frac{1}{4}$ W | FIXED CARBON FILM |
| R16 | 2412298903 | 910 kohm \pm 5% $\frac{1}{4}$ W | FIXED CARBON FILM |
| R17 | 2412179909 | 100 ohm \pm 5% $\frac{1}{4}$ W | FIXED CARBON FILM |
| R18 | 2412251908 | 10 kohm \pm 5% $\frac{1}{4}$ W | FIXED CARBON FILM |
| R19 | 2412264908 | 36 kohm \pm 5% $\frac{1}{4}$ W | FIXED CARBON FILM |
| R20 | 2412264908 | 36 kohm \pm 5% $\frac{1}{4}$ W | FIXED CARBON FILM |
| R21 | 2412275900 | 100 kohm \pm 5% $\frac{1}{4}$ W | FIXED CARBON FILM |
| R22 | 2440041025 | 1 kohm \pm 5% 1W | FIXED METAL OXIDE FILM |
| R23 | 2440041025 | 1 kohm \pm 5% 1W | FIXED METAL OXIDE FILM |
| R24 | 2412195909 | 47 ohm \pm 5% $\frac{1}{4}$ W | FIXED CARBON FILM |
| R25 | 2412195909 | 47 ohm \pm 5% $\frac{1}{4}$ W | FIXED CARBON FILM |
| R26 | 2440017020 | 10 ohm \pm 5% 1W | FIXED METAL OXIDE FILM |
| R27 | 2440017020 | 10 ohm \pm 5% 1W | FIXED METAL OXIDE FILM |
| R28 | 2412203901 | 100 ohm \pm 5% $\frac{1}{4}$ W | FIXED CARBON FILM |
| R29 | 2412203901 | 100 ohm \pm 5% $\frac{1}{4}$ W | FIXED CARBON FILM |
| R31 | 2412255904 | 15 kohm \pm 5% $\frac{1}{4}$ W | FIXED CARBON FILM |
| R32 | 2412255904 | 15 kohm \pm 5% $\frac{1}{4}$ W | FIXED CARBON FILM |
| R33 | 2412238905 | 3 kohm \pm 5% $\frac{1}{4}$ W | FIXED CARBON FILM |
| R34 | 2412238905 | 3 kohm \pm 5% $\frac{1}{4}$ W | FIXED CARBON FILM |
| R41 | 2440033020 | 220 ohm \pm 5% 1W | FIXED METAL OXIDE FILM |
| R42 | 2440033020 | 220 ohm \pm 5% 1W | FIXED METAL OXIDE FILM |
| R43 | 2440027023 | 68 ohm \pm 5% 1W | FIXED METAL OXIDE FILM |
| R45 | 2440017020 | 10 ohm \pm 5% 1W | FIXED METAL OXIDE FILM |

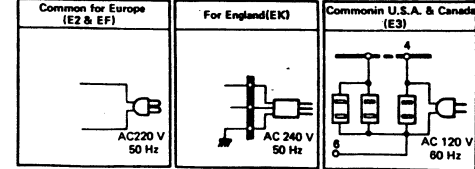
| Ref. No. | Part No. | Part Name & Descriptions | |
|--------------------|------------|--|------------------------------|
| CAPACITORS | | | |
| C01 | 2544003008 | 100 μ F | 6.3V FIXED ELECTROLYTIC |
| C02 | 2544003008 | 100 μ F | 6.3V FIXED ELECTROLYTIC |
| C03 | 2554169000 | 0.01 μ F \pm 5% | 50V FIXED PLASTIC FILM |
| C04 | 2554169000 | 0.01 μ F \pm 5% | 50V FIXED PLASTIC FILM |
| C05 | 2544015009 | 10 μ F | 16V FIXED ELECTROLYTIC |
| C06 | 2544015009 | 10 μ F | 16V FIXED ELECTROLYTIC |
| C07 | 2544015009 | 10 μ F | 16V FIXED ELECTROLYTIC |
| C08 | 2544015009 | 10 μ F | 16V FIXED ELECTROLYTIC |
| C09 | 2544042001 | 1000 μ F | 35V FIXED ELECTROLYTIC |
| C10 | 2544039001 | 220 μ F | 35V FIXED ELECTROLYTIC |
| C11 | 2544044009 | 1 μ F | 50V FIXED ELECTROLYTIC |
| C12 | 2544066003 | 2.2 μ F | 50V FIXED ELECTROLYTIC |
| C13 | 2544005006 | 330 μ F | 6.3V FIXED ELECTROLYTIC |
| C14 | 2549015004 | 22 μ F \pm 10% | 10V FIXED ELECTROLYTIC |
| C15 | 2549015004 | 22 μ F \pm 10% | 10V FIXED ELECTROLYTIC |
| C16 | 2554177005 | 0.022 μ F \pm 5% | 50V FIXED PLASTIC FILM |
| C16 | 2544079016 | 2200 μ F | 25V FIXED ELECTROLYTIC |
| C17 | 2554177005 | 0.022 μ F \pm 5% | 50V FIXED PLASTIC FILM |
| C17 | 2521018003 | 22 pF | \pm 5% 50V FIXED MICA FILM |
| C19 | 2554142001 | 0.01 μ F \pm 5% | 50V FIXED PLASTIC FILM |
| C20 | 2554142001 | 0.01 μ F \pm 5% | 50V FIXED PLASTIC FILM |
| C21 | 2554193005 | 0.1 μ F \pm 5% | 50V FIXED PLASTIC FILM |
| C22 | 2554193005 | 0.1 μ F \pm 5% | 50V FIXED PLASTIC FILM |
| OTHER PARTS | | | |
| | 2220636003 | P.W. BOARD | |
| | 2090042908 | 0.6 JUMPER WIRE USED 7 | |
| | 2050070004 | 8P. TERMINAL FOR SPEAKER | |
| | 2124242001 | SLIDE SWITCH (REMOTE) FOR LOUDNESS | |
| VR01 | 2116014030 | SEMI FIXED RESISTOR 100 kohm | |
| VR02 | 2116014030 | SEMI FIXED RESISTOR 100 kohm | |
| L01 | 2320017001 | INDUCTOR | |
| L02 | 2320017001 | INDUCTOR | |
| RL01 | 2140041008 | RELAY | |
| | 2020014003 | FUSE CLIP | |
| | EP-5667H1 | TERMINAL FOR WRAPPING PIN USED 1 | |
| | 2050087039 | 3P TERMINAL | |
| | 2050087055 | 5P TERMINAL | |
| | 2050122033 | 3P CONNECTOR PIN ASS. | |
| | 2055622008 | 3P CONNECTOR BASE | |
| | 2035622024 | 4P MINI CONNECTOR PIN | |
| | 2035622082 | 6P CONNECTOR BASE | |
| VR | 2110257000 | VARIABLE RESISTOR 50 kohm FOR MAIN VR | |
| VR | 2110256001 | VARIABLE RESISTOR 100 kohm FOR BALANCE | |
| SW | 2124243000 | 2P PUSH SWITCH FOR SPEAKER SWITCH | |
| | 2034146006 | 3P CONNECTOR CORD FOR +, - B | |
| | 2034149003 | 3P CONNECTOR CORD FOR BALANCE IN | |
| | 2034149029 | 3P CONNECTOR CORD FOR VOLUME OUT | |
| | 2034151004 | 3P CONNECTOR CORD FOR SERVO OUT IN | |
| | 4170021009 | RADIATOR | |
| | 4730354019 | TAPPING SCREW 3x8 FOR TR01 FIXED | |
| | 5130159185 | FUSE LABEL | |
| | 4730354019 | TAPPING SCREW 3x8 FOR RADIATOR FUSE U | |

WIRING DIAGRAM

⚠ Means important safety item, which must be replaced, when necessary, by a part specified or meeting the specification by the manufacturer.

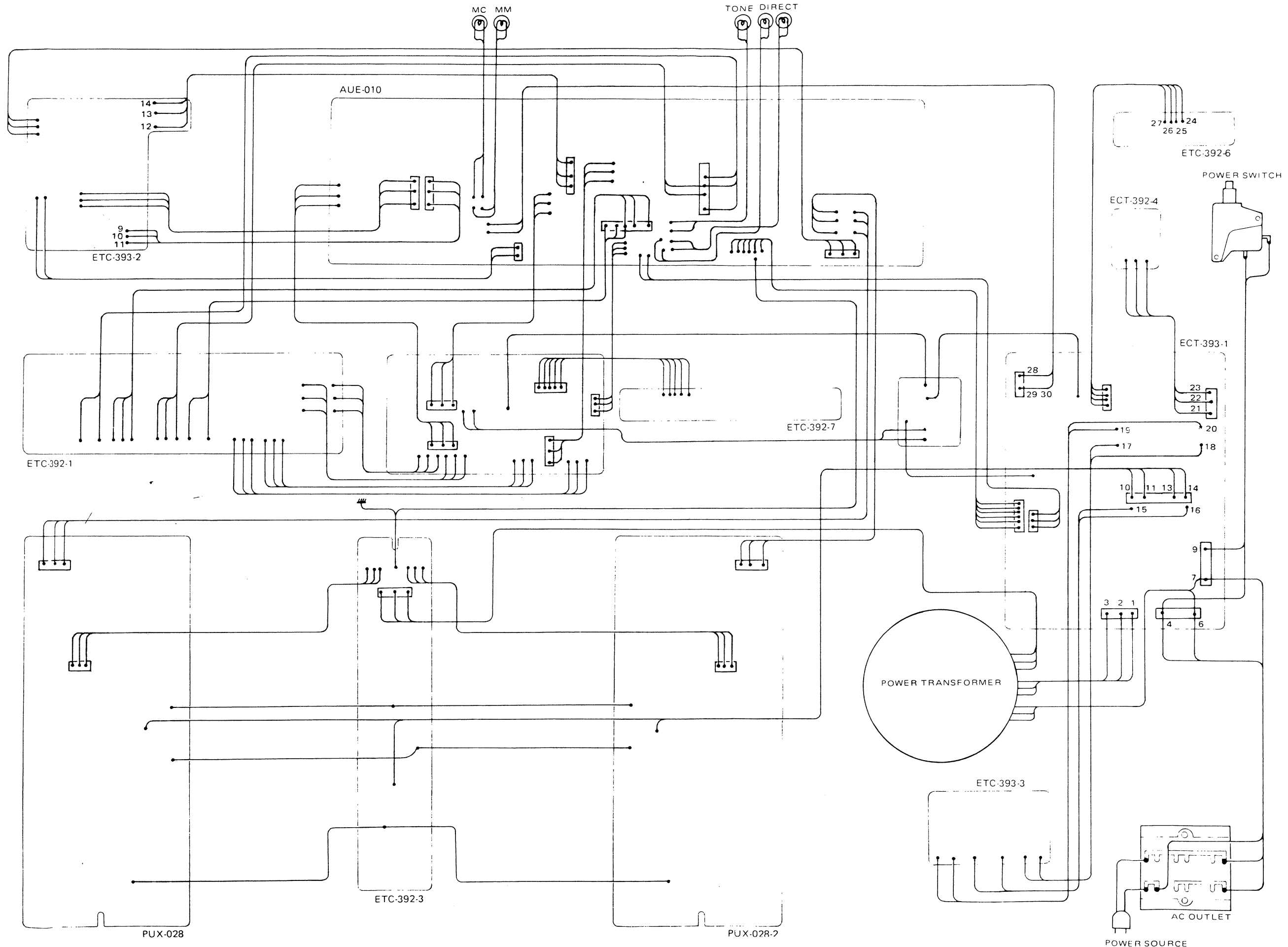


| MARK | C4 | F1 |
|--------------------------------|--------------|----|
| Common for Europe (E2 & EF) | 0.01 (450V) | 4A |
| For England (EK) | 0.01 (450V) | 4A |
| Common in U.S.A. & Canada (E3) | 0.022 (125V) | 8A |

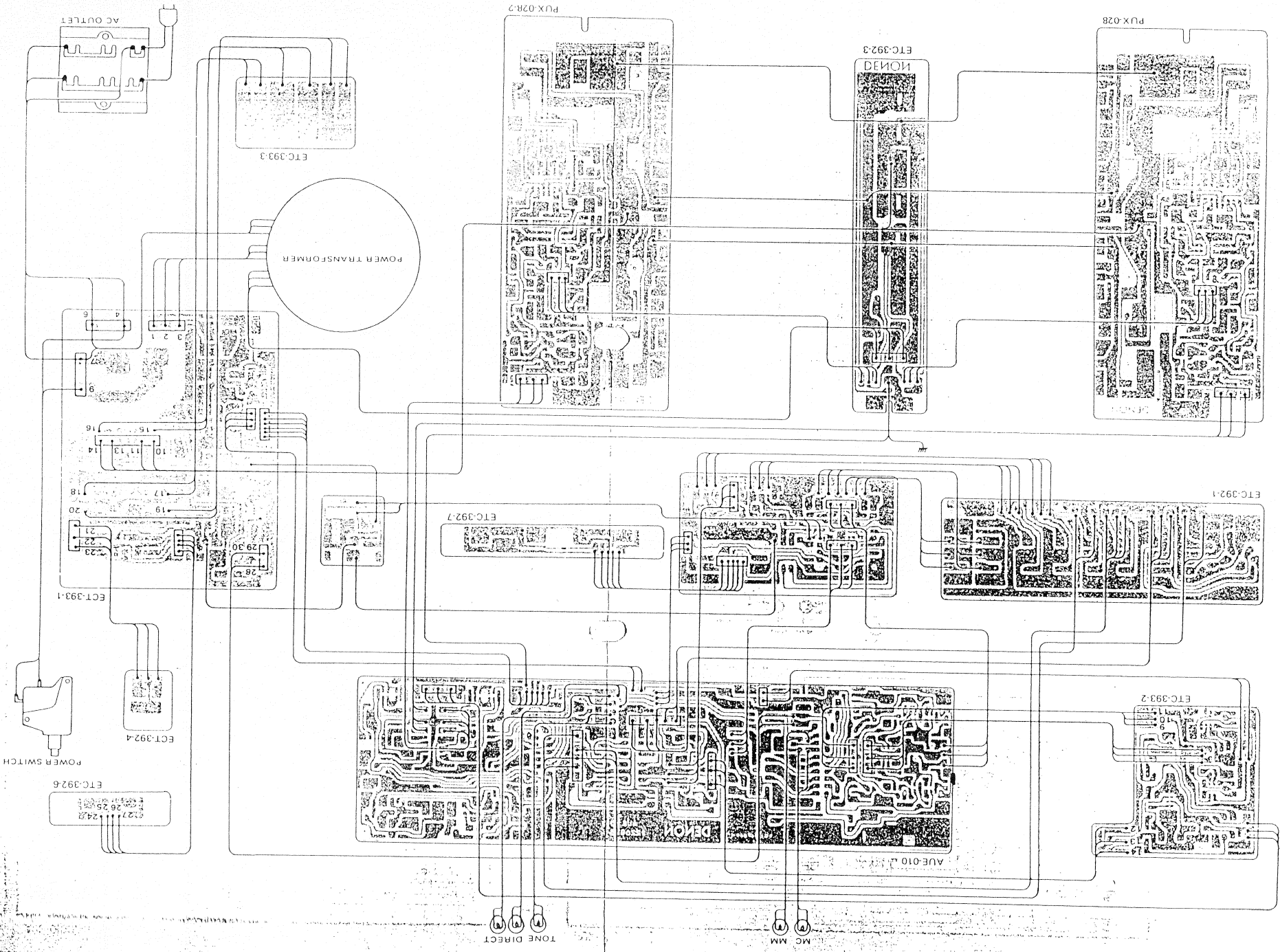


NOTES:
 ALL RESISTANCE VALUES IN OHM, K = 1,000 OHM, M = 1,000,000 OHM.
 ALL CAPACITANCE VALUES IN MICROFARAD, P = MICRO-MICRO FARAD.
 EVERY VOLTAGES AND CURRENTS IS MEASURED AT NO SIGNAL INPUT CONDITION.
 CIRCUIT AND PARTS ARE SUBJECT TO CHANGE WITHOUT PRIOR NOTICE.

CONNECTION DIAGRAM This connection diagram is viewed from the printed pattern side and used E3 (U.S.A. & Canada) version.



CONNECTION DIAGRAM This connection diagram is viewed from the printed pattern side and used E3 (U.S.A. & Canada) version.



DENON

IPPON COLUMBIA CO., LTD.
14-14, 4-CHOME AKASAKA,
NATO-KU, TOKYO 107 JAPAN
TEL: 03-584-8111
X: JAPANOLA J22591
FAX: NIPPONCOLUMBIA TOKYO

Printed in Japan