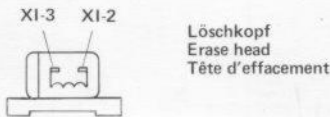
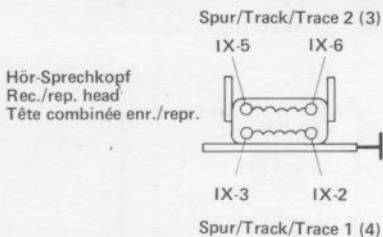


Von der Bestückungsseite gesehen
As seen from the top side
Vu du côté elements

Spannungen ohne Signal gemessen mit Instrument $> 50\,000\ \Omega/V$
Voltages without signal measured with instrument $> 50\,000\ \Omega/V$
Tensions sans signal mesurées avec instrument $> 50\,000\ \Omega/V$



Transistoren von der Anschlußseite gesehen
Transistors as seen from the connecting side
Transistors vus du côté des connexions

Spannungen gemessen ohne Signal in Stellung:
RECORD, START, Cr,
DOLBY, LIMITER
mit Digitalvoltmeter ($R_E > 1\ M\Omega$)
gegen Masse.

Voltages measured without signal in position:
RECORD, START, Cr,
DOLBY, LIMITER
with digital voltmeter ($R_E > 1\ M\Omega$)
to ground.

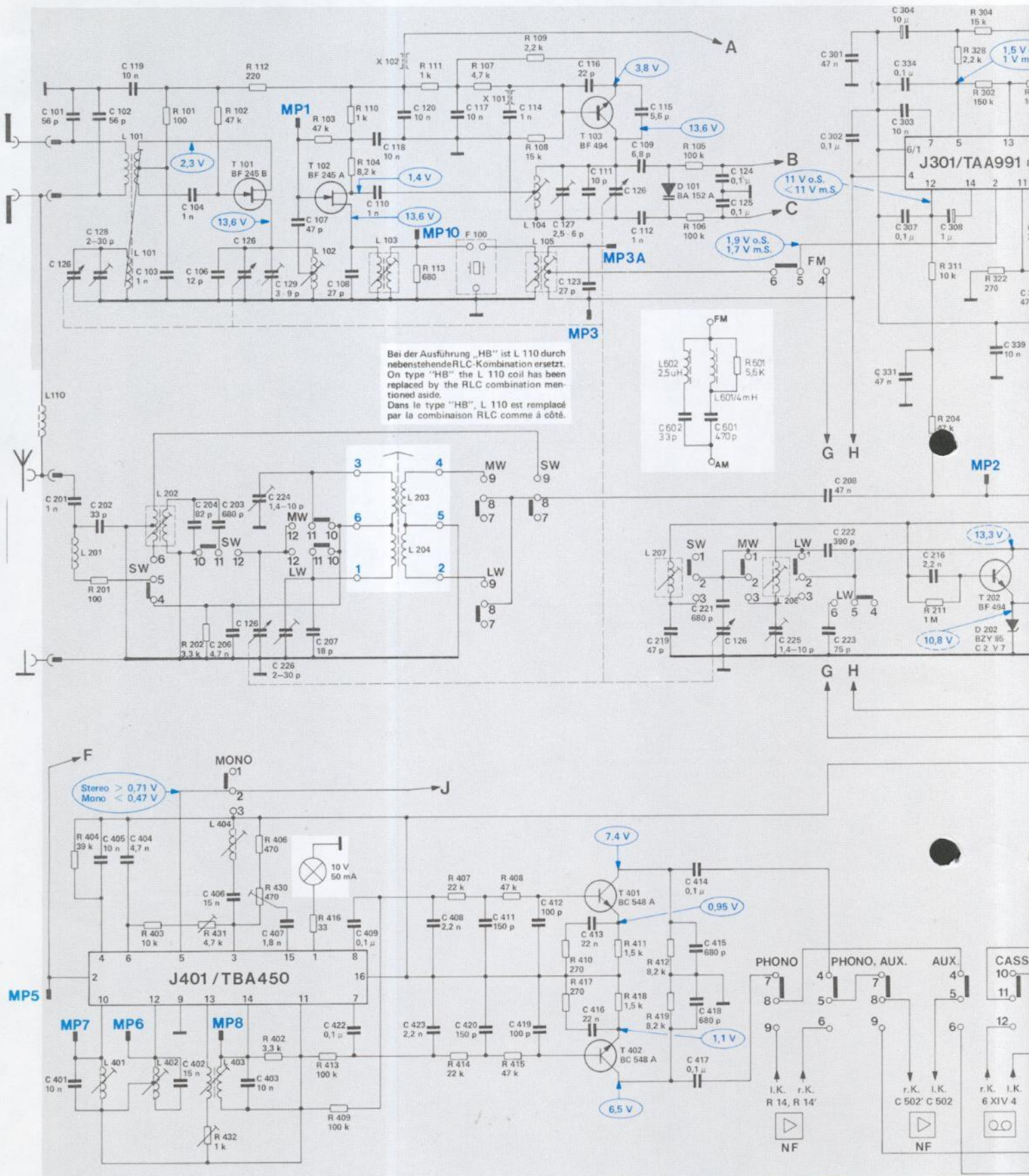
Tensions sans signal mesurées en position:
RECORD, START, Cr,
DOLBY, LIMITER
avec voltmètre numérique
($R_E > 1\ M\Omega$) contre masse.

- S 1 AW-Schalter
- S 2 AW-Schalter
- S 3 Fe/Cr-Schalter
- S 4 Fe-Schalter
- S 5 Cr-Schalter
- S 6 START-Schalter
- S 7 DOLBY NR-Schalter
- S 8 LIMITER-Schalter
- S 9 MIC-Schalter L
- S 10 MIC-Schalter R
- S 11 MONITOR-Schalter
- S 12 OSZILLATOR-Schalter

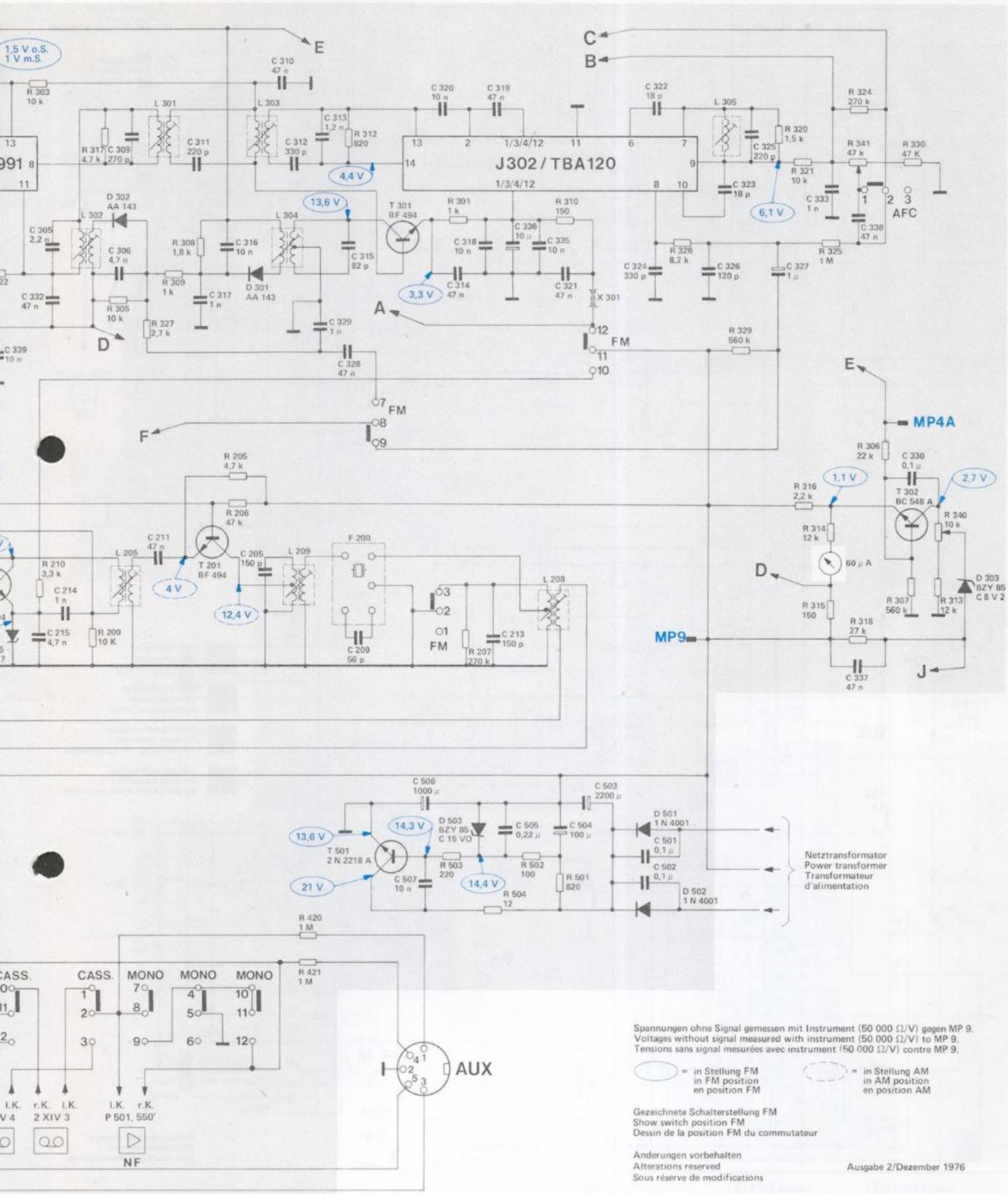
- S 1 REC./REP.-switch
- S 2 REC./REP.-switch
- S 3 Cr/Fe-switch
- S 4 Fe-switch
- S 5 Cr-switch
- S 6 START-switch
- S 7 DOLBY NR-switch
- S 8 LIMITER-switch
- S 9 MIC-switch left
- S 10 MIC-switch right
- S 11 MONITOR-switch
- S 12 OSZILLATOR-switch

- S 1 ENR./REP.-interrupteur
- S 2 ENR./REP.-interrupteur
- S 3 Fe/Cr-interrupteur
- S 4 Fe-interrupteur
- S 5 Cr-interrupteur
- S 6 START-interrupteur
- S 7 DOLBY NR-interrupteur
- S 8 LIMITER-interrupteur
- S 9 MIC-interrupteur L
- S 10 MIC-interrupteur R
- S 11 MONITOR-interrupteur
- S 12 OSZILLATOR-interrupteur

Gezeichnete Schalterstellung:
RECORD, SPUR 1 - 2, START, Cr,
DOLBY, LIMITER, MIC L
Show switch position:
RECORD, TRACE 1 - 2, START, Cr,
DOLBY, LIMITER, MIC L
Dessin de la position du commutateur:
RECORD, TRACE 1 - 2, START, Cr,
DOLBY, LIMITER, MIC L



C	101, 126, 128, 102, 119, 103, 104, 106 201, 202 401, 405, 404	126, 129, 107, 108 204, 203, 206, 126, 224, 226, 207 402, 406, 403, 407, 422, 409	110, 118, 120, 117, 114, 127, 123, 116, 111, 126, 109, 112, 115, 124, 125 219, 221, 126 423, 408, 420, 411, 419, 412, 413, 416 414, 415, 418, 417	301, 302, 304, 334, 307, 303, 308 208, 222, 223, 331, 216	339, 211, 204
R	201, 404	101, 202, 102, 112, 103, 110, 104, 403, 431, 432, 406, 430, 402, 416, 413, 409	111, 113, 107, 109, 108, 407, 414, 408, 415, 410, 417, 411, 418, 412, 419	105, 106	311, 328, 304, 302, 211, 204



Spannungen ohne Signal gemessen mit Instrument (50 000 Ω/V) gegen MP 9.
 Voltages without signal measured with instrument (50 000 Ω/V) to MP 9.
 Tensions sans signal mesurées avec instrument (50 000 Ω/V) contre MP 9.

○ = in Stellung FM
 in FM position
 en position FM

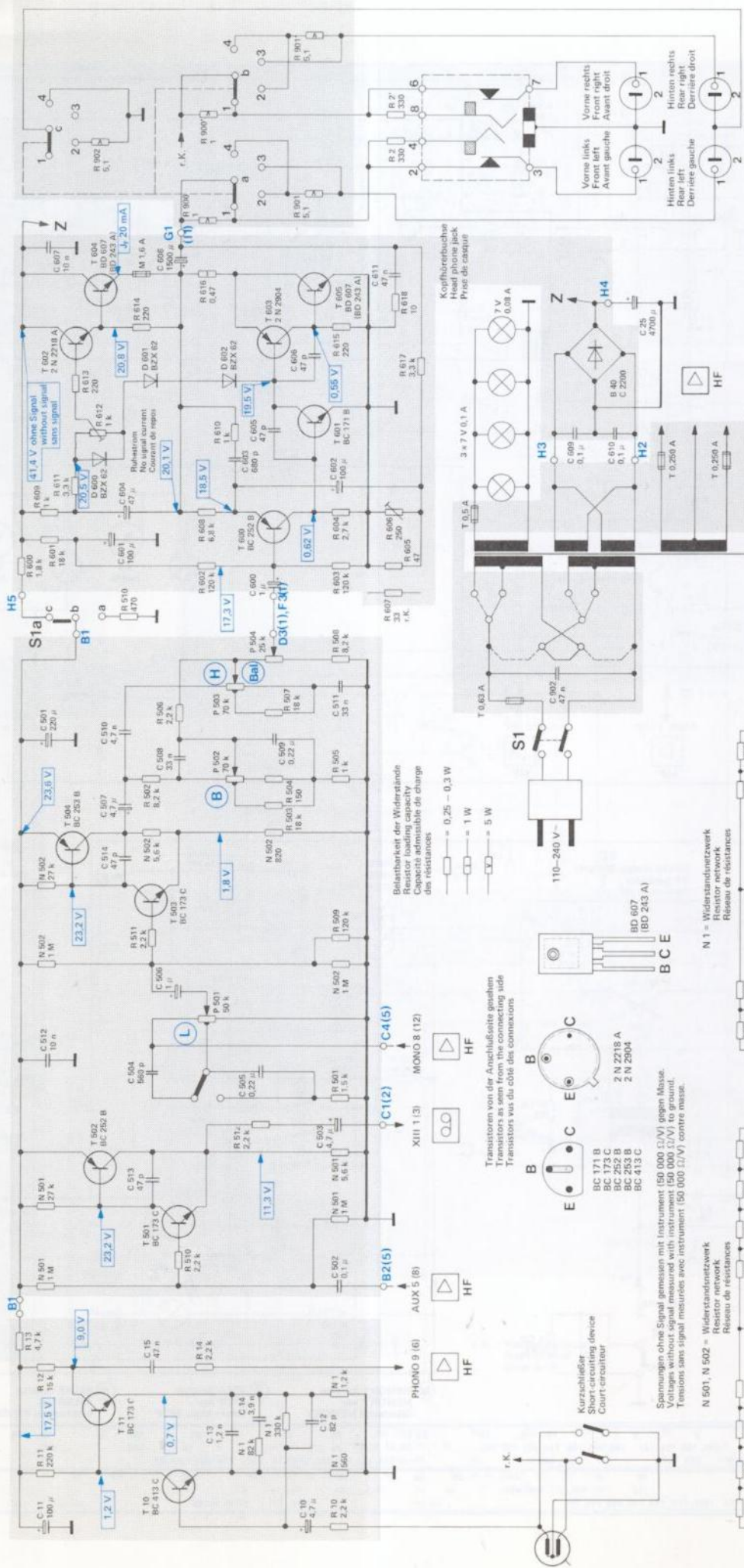
○ = in Stellung AM
 in AM position
 en position AM

Gezeichnete Schalterstellung FM
 Show switch position FM
 Dessin de la position FM du commutateur

Anderungen vorbehalten
 Alterations reserved
 Sous réserve de modifications

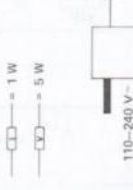
Ausgabe 2/Dezember 1976

339, 332, 305 215, 214	309, 306 211	311, 317, 316, 310, 312, 313, 329, 315, 328 209	320, 314, 318, 319, 336, 335, 321 213	324, 322	326, 323, 325, 327, 333	338 337	330
4, 302, 322, 303 210	317, 305 209	327, 309, 308	312	301	326	329	320, 321, 325, 324, 341, 330 316, 314, 315, 318, 306, 307, 340, 313
		205, 206	420, 421	207, 503, 504, 502, 501			



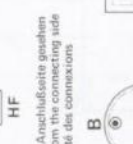
Ausgabe 4/ Juni 1977

Änderungen vorbehalten
 Alterations reserved
 Sous réserve de modifications



Belastbarkeit der Widerstände
 Resistor loading capacity
 Capacité admissible de charge
 des résistances

- - - = 0,25 - 0,3 W
- - - = 1 W
- - - = 5 W

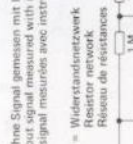


Transistoren von der Anschlussseite gelesen
 Transistors as seen from the connecting side
 Transistors lus du côté des connexions

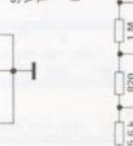
- B BC 171 B
- C BC 173 C
- E BC 252 B
- B BC 253 B
- C BC 413 C



N 1 = Widerstandnetzwerk
 Resistor network
 Réseau de résistances

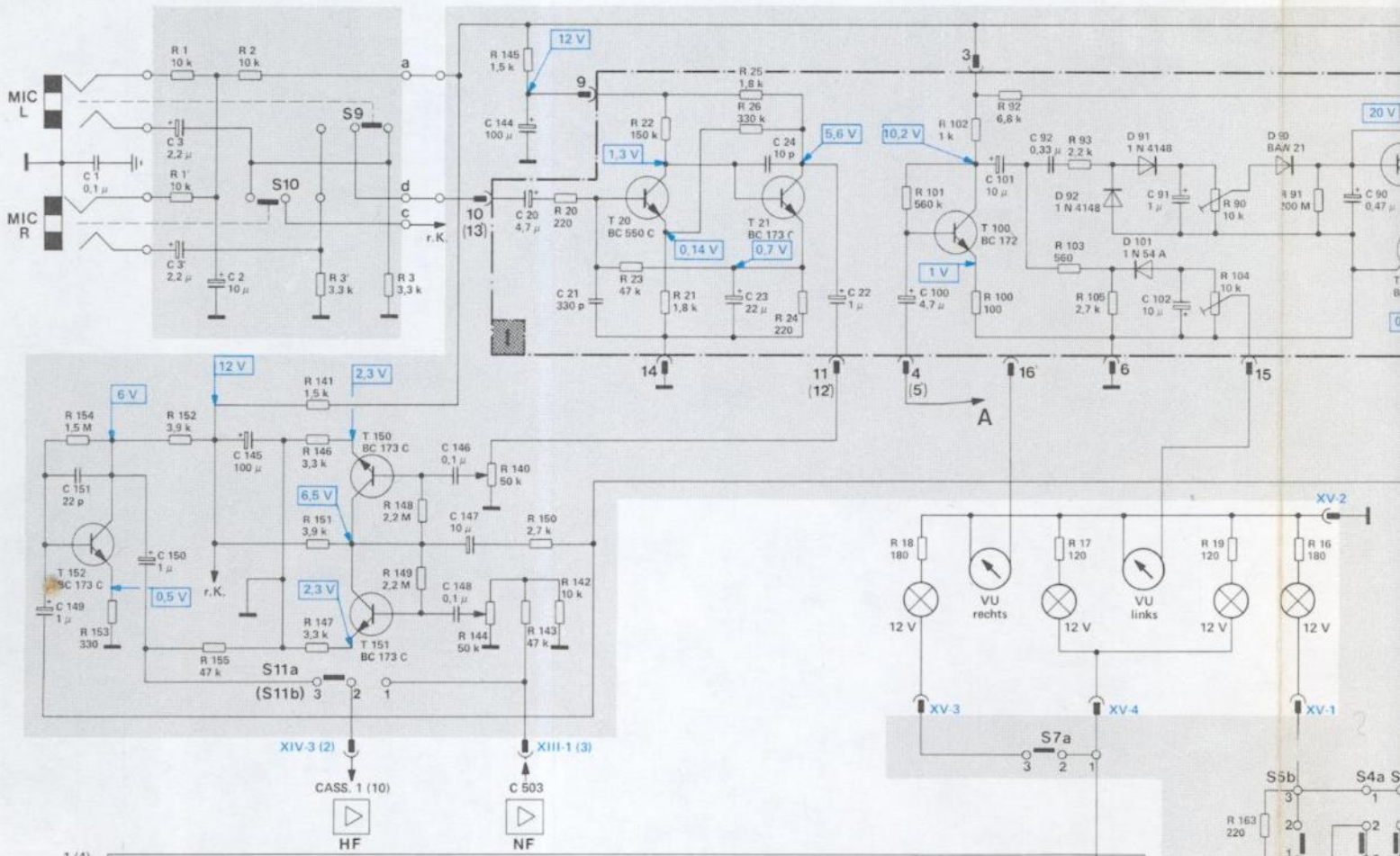


N 501, N 502 = Widerstandnetzwerk
 Resistor network
 Réseau de résistances

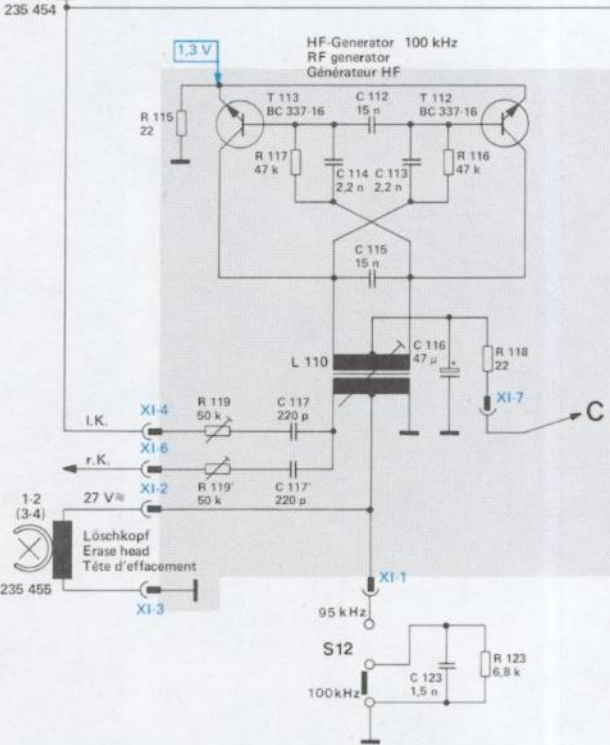


Spannungen ohne Signal gemessen mit Instrument (50 000 Ω/V) gegen Masse.
 Voltages, without signal measured with instrument (50 000 Ω/V) to ground.
 Tensions sans signal mesurées avec instrument (50 000 Ω/V) contre masse.

R	10	N 1, N 1, N 1, N 1	11	N 501	12	13	N 501	510	N 502, N 502	506	600, 601, 609, 611	612, 613	614	901
			14	N 501	15	16	N 501	507, P 504	508	509	602, 603, 608, 604	610	617, 618, 618, 616	900, 901
C	10	83, 14	12		14	15		509	514	507	601, 604	603	606	607
			15		15	16		509, 510, 511	514	507	602	605	608	611, 608
			16	502	502	502	502	802	802		609, 610	609, 610	609	25



1 (4) Hör-Sprechkopf
Rec./Rep. Head
Tête combinée enr./repr.



(M) MEMORY-Schalter
MEMORY key
Sélecteur à MEMORY

(S) STOP-Schalter
STOP key
Interrupteur STOP

(P) PAUSE-Schalter
PAUSE key
Interrupteur PAUSE

R	154, 153	152	155	141, 146, 151, 147	148, 149, 116, 144, 150, 143, 142	118, 123	113, 114, 112, 111, 110, 122	23, 22	21	26, 120,	113, 114, 112, 111, 110, 122	23	24	22	100	101	92	101	92	93	105	103	17	4	91	102	90	104, 19, 163, 16	81	9.5	90
C	149, 151	150, 3'	2	145	112	146, 147, 148, 20	117, 117', 114, 115, 113, 116, 123	118	111	110	119	118	111	110	119	100	101	92	101	92	91	102	102	102	91	102	8	90	90	90	

