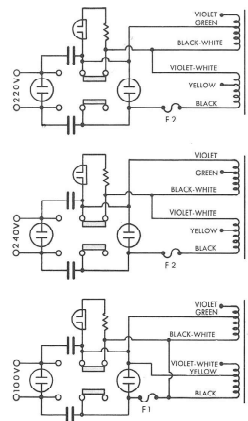
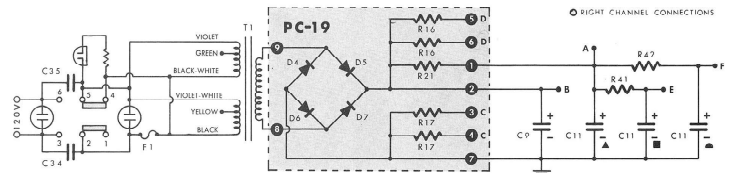
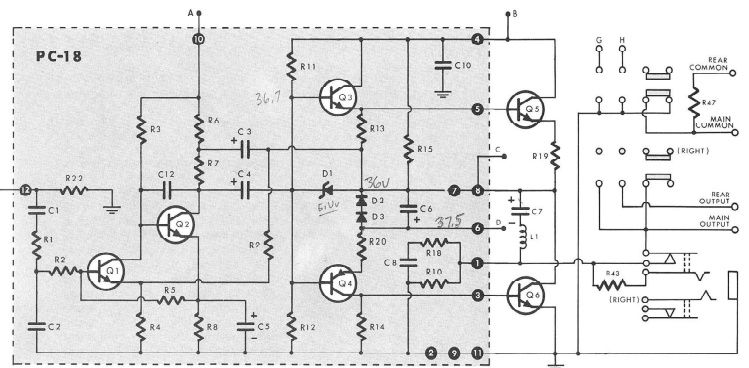


ALL WIRING NOT SHOWN FOR THE RIGHT CHANNEL IS THE SAME AS THE LEFT CHANNEL WHICH IS SHOWN. RESISTOR AND CAPACITOR NUMBERS ARE THE SAME FOR THE PARTS ON BOTH CHANNELS.



### VOLTAGE TEST POINTS

Measured with VTVM (TVM) at rated AC line voltage, 8 ohm load, shorted input. All voltages are DC unless specified AC. Voltages not shown are not significant for servicing purposes, as they may vary widely with different transistors and still be normal. Transistor load voltages shown may vary +20% or more. Other points should be within ±10%.

PC-18		PC-19		Q7		Q8		Q9		Q10	
#1	0	#1	71	E	.1	.8	.3	1.2			
#2	0	#2	74	B	.7	1.5	.94	1.8			
#3	<0.5	#3	36	C	1.5	10	1.8	9.4			
#4	74	#4	36								
#5	36.5	#5	37.5								
#6	37.5	#6	37.5								
#7	36	#7	0								
#8	36	#8	0								
#9	0	#9	54 AC*								
#10	71										
#11	0										
#12	0										

Capacitor C-11

- ▲ 71
- 24
- 17.5

### Dynaco SCA-80Q SCHEMATIC DIAGRAM

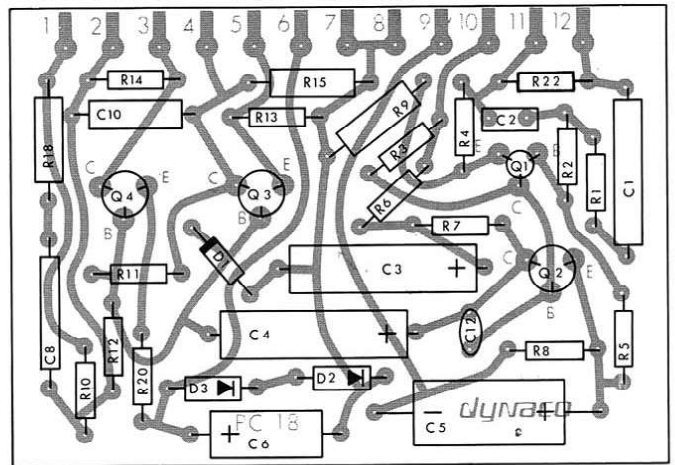
## COMPONENT VALUES

All resistors are 1/2 watt, 5% unless otherwise indicated.

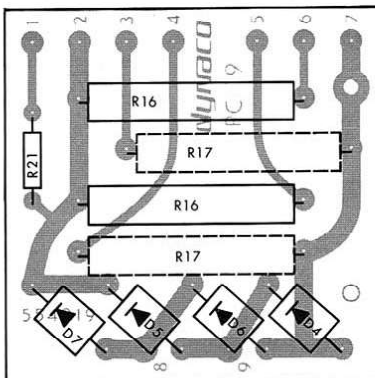
	PART #		PART #		PART #
R 1	113472	4,700 ohms	R30	113563	56,000 ohms
R 2	113472	4,700 ohms	R31	113121	120 ohms
R 3	113273	27,000 ohms	R32	113331	330 ohms
R 4	113151	150 ohms	R33	113333	33,000 ohms
R 5	113104	100,000 ohms	R34	113332	3,300 ohms
R 6	113102	1,000 ohms	R35	113472	4,700 ohms
R 7	113152	1,500 ohms	R36	113391	390 ohms
R 8	113331	330 ohms	R37	113124	120,000 ohms
R 9	116222	2,200 ohms, 1 watt	R38	113271	270 ohms
R10	113102	1,000 ohms	R39	113472	4,700 ohms
R11	113103	10,000 ohms	R40	112680	68 ohms, 10%
R12	113103	10,000 ohms	R41	113472	4,700 ohms
R13	103680	68 ohms	R42	113103	10,000 ohms
R14	103680	68 ohms	R43	113121	120 ohms
R15	116222	2,200 ohms, 1 watt	R44	113473	47,000 ohms
R16	120401	400 ohms, 7 watt, 5%	R45	113103	10,000 ohms
R17	120401	400 ohms, 7 watt, 5%	R46	113103	10,000 ohms
R18	125040	4.7 ohms, 1 watt, 10%	R47	120100	10 ohms, 10 watt, 10%
R19	128004	0.47 ohms, 2 watt, 10%	C 1	263334	0.33 mfd
R20	103030	3.3 ohms	C 2	245221	220 pf
R21	103680	68 ohms	C 3	283366	35 mfd, 30v., non-polarized
R22	113103	10,000 ohms	C 4	283366	35 mfd, 30v., non-pol.
R23	113822	8,200 ohms	C 5	283507	500 mfd, 15v.
R24	113183	18,000 ohms	C 6	282506	50 mfd, 10v., non-polarized
R25	113472	4,700 ohms	C 7	284508	5000 mfd, 80v.
R26	113333	33,000 ohms	C 8	264104	0.1 mfd
R27	113332	3,300 ohms	C 9	284508	5000 mfd, 80v.
R28	113473	47,000 ohms	C10		0.01 mfd, 100v.
R29	113472	4,700 ohms	C11		700 mfd @ 75v. ▲
					700 mfd @ 60v. ■
					800 mfd @ 20v. ●
					294228
					244271
					244104
					283505
					265103
					265332
					265223
					283505
					245101
					283516
					265153
					265563
					281107
					283516
					263334
					245221
					283516
					281507
					265683
					264104
					265153
					265224
					244271
					227203
					227203

	PART #	
F 1	342020	Fuse, 2 amp slo-blo
F 2	342010	Fuse, 1 amp slo-blo (alternate)
L 1	319913	114 inches of #16 insulated wire
T 1	464019	Dynaco power transformer 10490E
D 1	540405	zener diode, 5.1 volt, 5%, 400 mw
D 2	544015	silicon diode, 0.8 volt max. drop @ 100 ma.
D 3	544015	silicon diode, 0.8 volt max. drop @ 100 ma.
D 4	544322	silicon diode, 3 amperes, 200 prv.
D 5	544322	silicon diode, 3 amperes, 200 prv.
D 6	544322	silicon diode, 3 amperes, 200 prv.
D 7	544322	silicon diode, 3 amperes, 200 prv.
Q 1	572108	BC108A 170-260 Beta
Q 2	572002	2N5320 140-260 Beta, 90 V <sub>cer</sub> , r=5KΩ
Q 3	572001	2N5320 100-200 Beta, 90 V <sub>cer</sub> , r=5KΩ
Q 4	562671	2N5322 100-160 Beta, 90 V <sub>cer</sub> , r=5KΩ
Q 5	571844	2N3772 40-90 Beta @ 1 A, 100 V <sub>cer</sub> , r=100Ω
Q 6	571844	2N3772 40-90 Beta @ 1 A, 100 V <sub>cer</sub> , r=100Ω
Q 7	572109	BC109B 240-500 Beta @ 5 volts, .2 ma
Q 8	572109	BC109B 240-500 Beta @ 5 volts, .2 ma
Q 9	572109	BC109B 240-500 Beta @ 5 volts, .2 ma
Q 10	572109	BC109B 240-500 Beta @ 5 volts, .2 ma

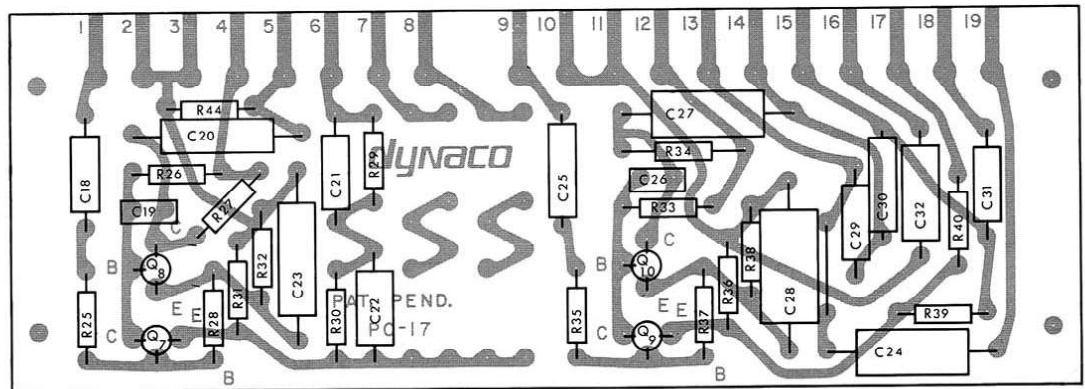
Volume control	250,000 ohms tapped	177254
Balance control	220,000 ohms special	167224
Bass control	50,000 ohms special	167514
Treble control	40,000 ohms special	167404



**PC-18**



**PC-19**



**PC-17**