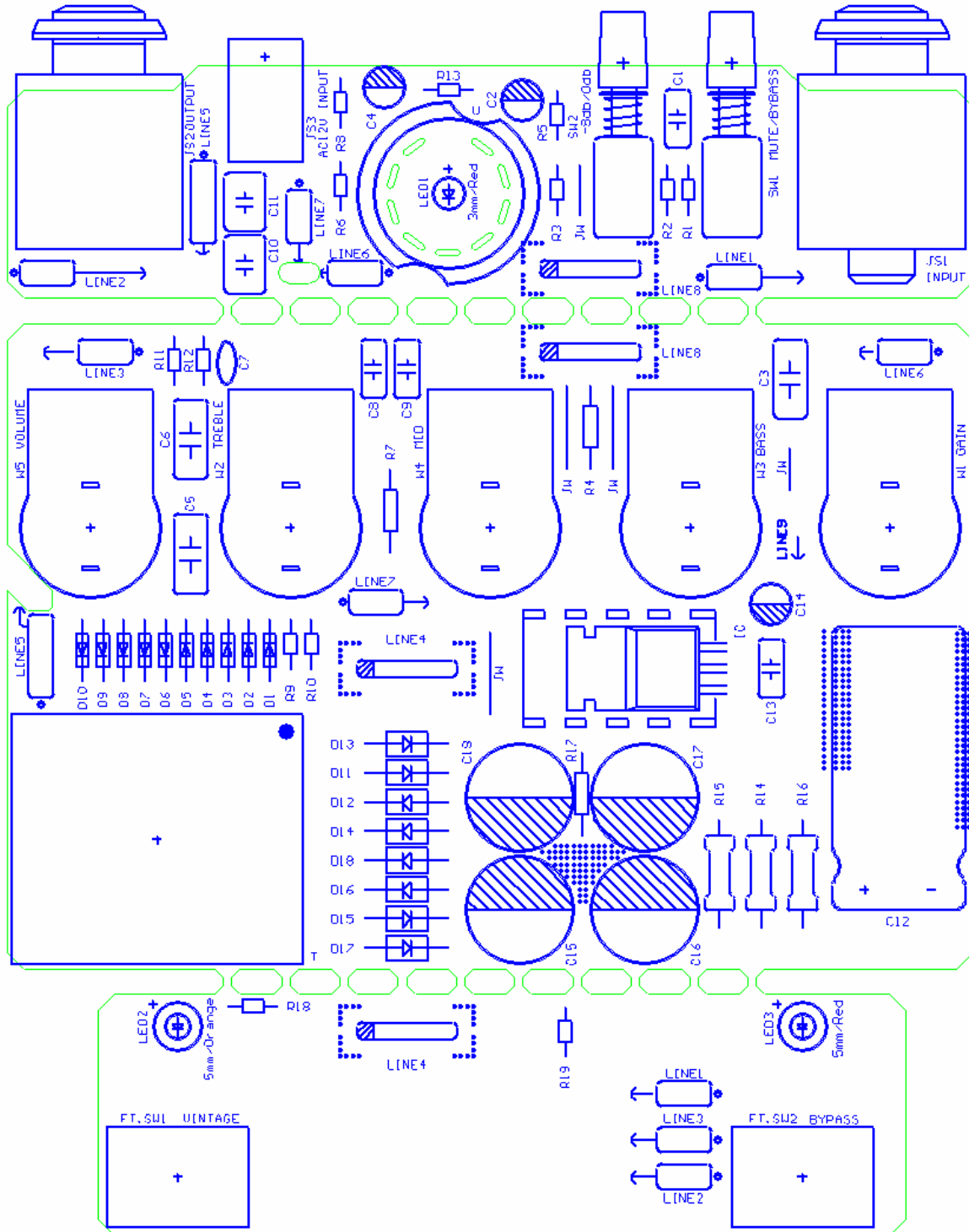


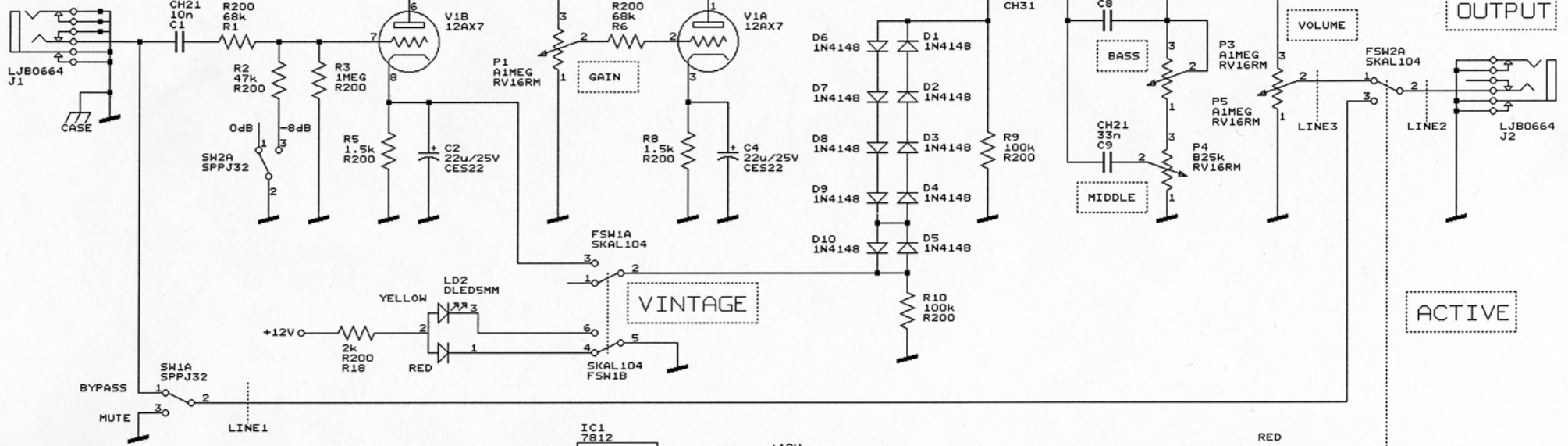
COMPONENT LIST:

Item	Qty	Reference	Part	Description
1	1	C7	680p CC05	Capacitor Ceramic
2	2	C1,C11	10n CH21	Capacitor Film Hi-Voltage (250V)
3	2	C3,C5	10n CH31	Capacitor Film Hi-Voltage (400V)
4	1	C8	22n CH21	Capacitor Film Hi-Voltage (250V)
5	1	C9	33n CH21	Capacitor Film Hi-Voltage (250V)
6	1	C6	68n CH41	Capacitor Film Hi-Voltage (400V)
7	1	C12	10u/25V CES22	Capacitor Ellyt Miniature
8	2	C2,C4	22u/25V CES22	Capacitor Ellyt Miniature
9	4	C13,C14,C15,C16	22u/400V CES24	Capacitor Ellyt Hi Voltage
10	1	C10	330u/25V CES26	Capacitor Ellyt Standard
11	1	IC1	7812	Voltage Regulator Positive 12V
12	8	D11,D12,D13,D14,D15,D16, D17,D18	1N4007	Diode 1A 1000V
13	10	D1,D2,D3,D4,D5,D6,D7,D8, D9,D10	1N4148	Diode Small Signal
14	1	LED1	LED3MM	LED 3mm ORANGE
15	1	LD3	LED5MM	LED 5mm RED
16	1	LD2	DLED5MM	LED DUAL 5mm RED/YELLOW
17	1	F1	FUSE 1A MICRO	Microfuse 1A Slow Blow
18	1	R13	680 R200	Resistor Metal Film 0.2W 1%
19	2	R5,R8	1.5k R200	Resistor Metal Film 0.2W 1%
20	2	R18,R19	2k R200	Resistor Metal Film 0.2W 1%
21	1	R12	33k R200	Resistor Metal Film 0.2W 1%
22	2	R2,R11	47k R200	Resistor Metal Film 0.2W 1%
23	2	R1,R6	68k R200	Resistor Metal Film 0.2W 1%
24	2	R9,R10	100k R200	Resistor Metal Film 0.2W 1%
25	1	R3	1MEG R200	Resistor Metal Film 0.2W 1%
26	2	R4,R7	240k R400	Resistor Metal Film 0.6W 1%
27	1	R17	680k R400	Resistor Metal Film 0.6W 1%
28	1	R14	4.7k R600	Resistor Metal Film 1W 5%
29	1	R15	10k R600	Resistor Metal Film 1W 5%
30	1	R16	22k R600	Resistor Metal Film 1W 5%
31	1	P4	B25k RV16RM	Potentiometer Carbon Lin
32	1	P2	B250k RV16RM	Potentiometer Carbon Lin
33	3	P1,P3,P5	A1MEG RV16RM	Potentiometer Carbon Log
34	2	FSW1,FSW2	SKAL104	Foot Switch DPDT PC
35	2	SW1,SW2	SPPJ32	Switch PC-Mounted SPDT (Alps)
36	1	TR1	2600A	Transformer 120V/12V 15VA
37	2	J1,J2	LJB0664H-6	Jack Stereo Plastic Lih Sheng
38	1	J3	LD-0202-2.0	Adapter Jack 2.1mm center
39	1	V1	12AX7	Valve Dual Triode (Svetlana)

COMPONENT PLACEMENT COMPONENT SIDE:



INPUT



OUTPUT

ACTIVE

VINTAGE

VOLUME

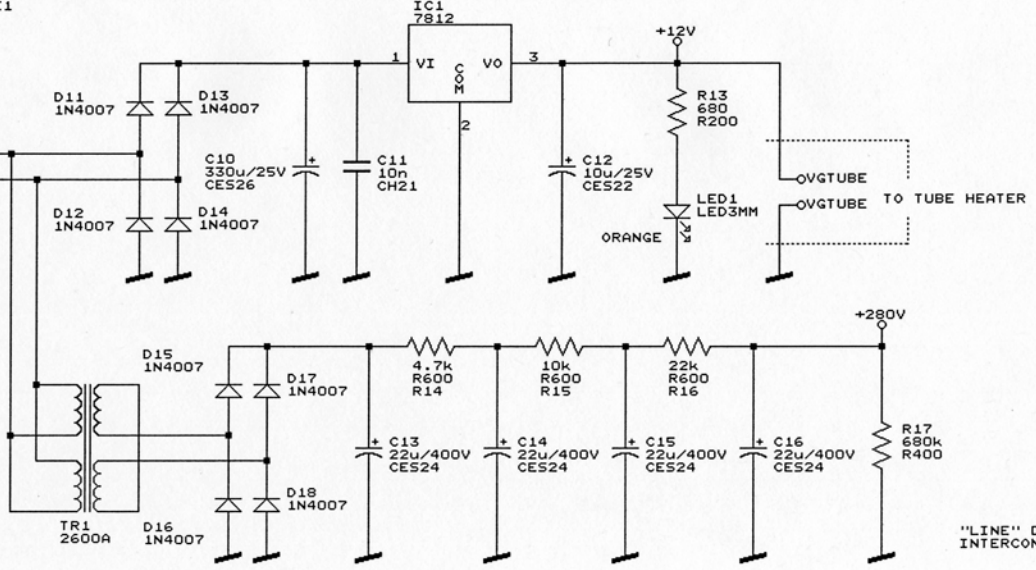
AC IN

12V AC 500 mA

! WARNING !

UNAUTHORIZED COPYING OF THIS OR PARTS OF THIS DOCUMENT IS PROHIBITED AND MAY LEAD TO LEGAL PROCEDURES IN ACCORDANCE WITH THE COPYRIGHT LAWS.

REFER TO COMPONENT LIST FOR SPECIFICATION OF PARTS.



"LINE" DENOTES SCREENED INTERCONNECTION

EBS SWEDEN AB		
Framnasbacken 12		
SE-171 66 SOLNA		
SWEDEN		
TEL.+46-8-7350010 FAX.+46-8-7350015		
Title		
EBS VALVEDRIVE - TUBE PREAMP PEDAL		
Size	Document Number	REV
A	VDR.	A
Date:	February 15, 2006	Sheet of