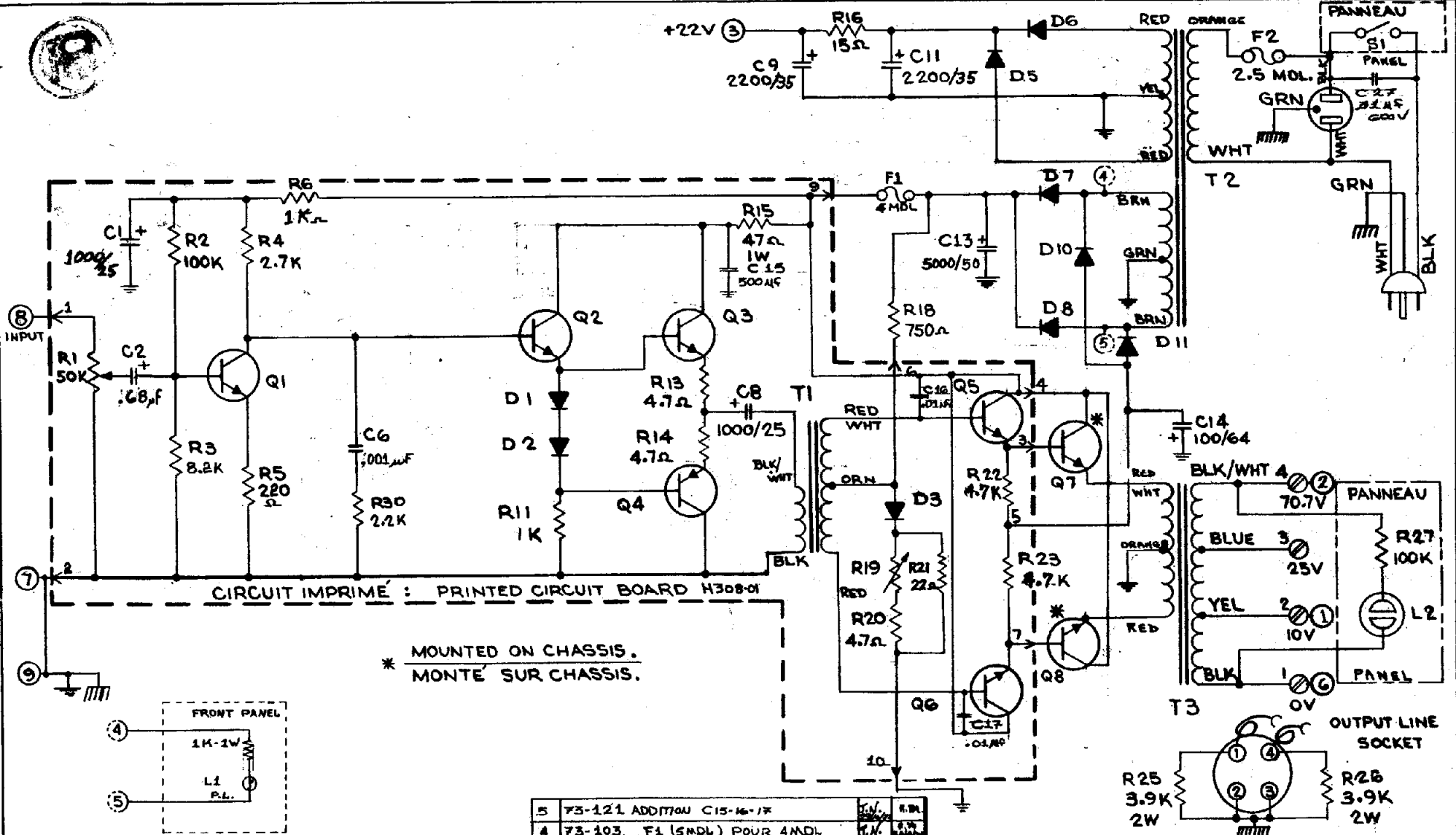


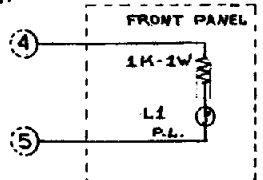
7. SBB

BASE - 1. PUT current meter in place of F1  
 2. Turn R19 full ch (minimum current)  
 3. Turn on AMP & Turn R19 cc UNTIL CURRENT RISES SOME.



CIRCUIT IMPRIMÉ : PRINTED CIRCUIT BOARD H308-01

\* MOUNTED ON CHASSIS.  
 \* MONTE SUR CHASSIS.



5	73-121 ADDITION C15-16-17	J.V.	R.H.
4	73-103. F1 (SMDL) POUR 4MDL	J.N.	R.H.
3			
2	73-263 ADDITION C17 0.01µF 500V	J.N.	R.H.
1	72-216, 73-037, 73-063	J.V.	R.H.
REV.	DESCRIPTION PRÉCÉDENTE	REV. PAR.	APPRO. PAR.

TITRE SCHEMATIC DIAGRAM-AMPLIFIER MODEL LS040RM  
 DIAGRAMME SCHEMATIQUE-AMPLI. MODELE LS040RM  
 CREATION REVISION FD VERI. DATE 25/6/72  
 DORSIN JP (S.A.S) APPRO. DATE 09/06/71  
 SCHÉMA P.H.  
 ELECTRO VOX  
 9/1001-04

○ PINS OF OCTAL SOCKET (9 PIN).  
 BORNES DU CONNECTEUR OCTAL (9 BROCHES)