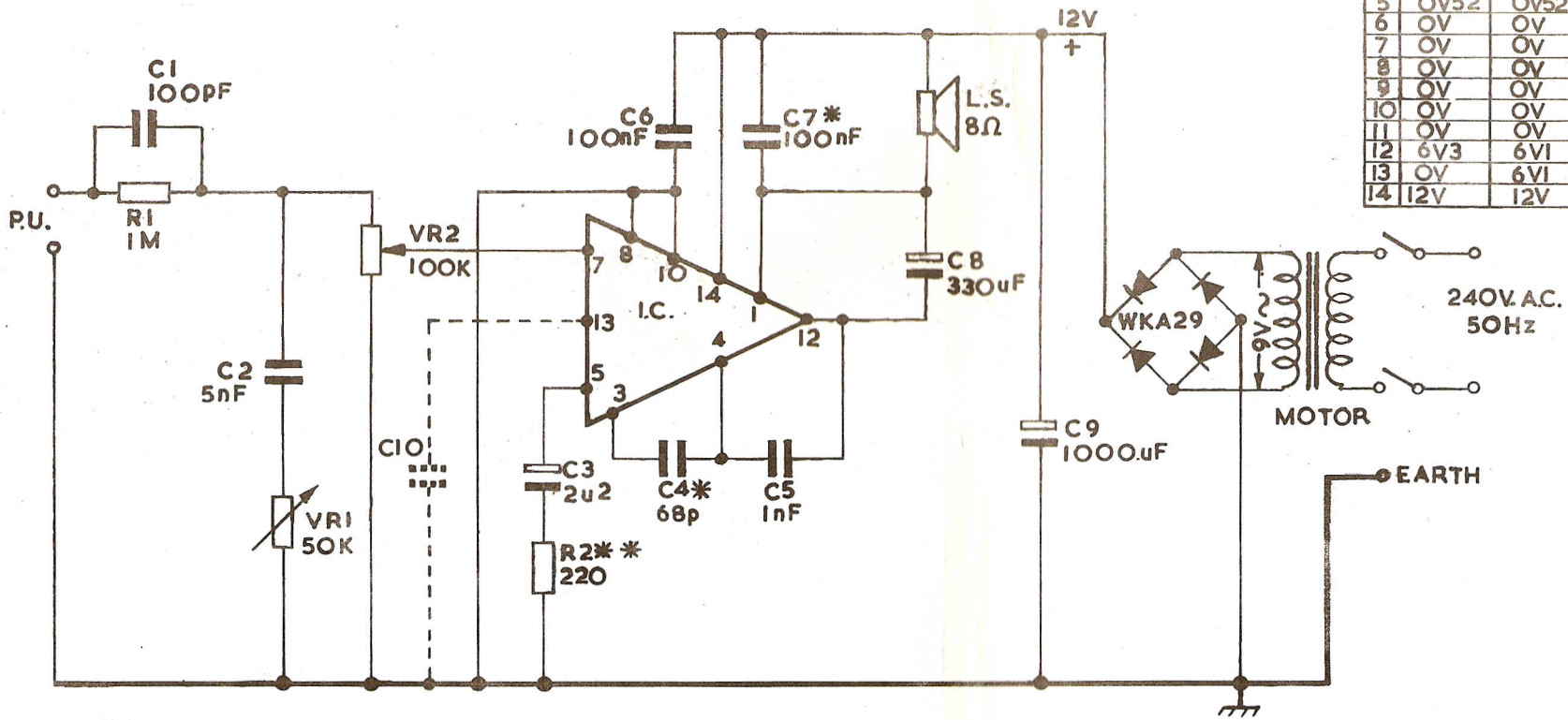


A 12-10-76

B 14-10-76

NOTE RE R2,
ADDED.

PIN	TAA 611B	TBA820
1	12V	12V
2	0V	7V5
3	7V3	0V
4	0V65	0V65
5	0V52	0V52
6	0V	0V
7	0V	0V
8	0V	0V
9	0V	0V
10	0V	0V
11	0V	0V
12	6V3	6V1
13	0V	6V1
14	12V	12V

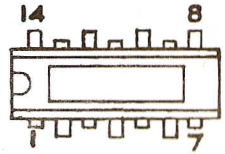


I.C. TBA 820, TAA 611B

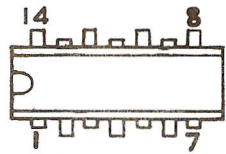
C10. 220nF REQUIRED ONLY WITH TBA 820.

* C4&C7, NOT USED WITH TBA 820

** R2. 180 WITH TBA 820



PIN CONNECTIONS
TAA 611B.



PIN CONNECTIONS
TBA 820.

TOLERANCES

- M/M
- 1 DEC. PLACE ± .25
- 2 DEC. PLACE ± .1
- INS.
- 1 DEC. PLACE ± .020"
- 2 DEC. PLACE ± .010"
- 3 DEC. PLACE ± .005"
- DIA. OF HOLES ± .003"
- FRACTIONS ± 1/32"
- UNLESS OTHERWISE STATED.

FIDELITY RADIO LTD. VICTORIA RD., LONDON NW 10		
TITLE CIRCUIT DIAGRAM for HF42.		
SCALE	---	MATL. _____
DRAWN	D. HAY.	FINISH. _____
CHECKED	_____	
APPROVED	_____	
MODEL	HF.42.	
DRG No. _____		C