



# CHAMP 25 SE PARTS LIST

JUNE 1992

0216600000 (120V)  
0216670000 (100V)  
0216650000 (220V/240V)

## NOTICE:

The information contained herein is CONFIDENTIAL and PROPRIETARY to Fender Musical Instruments. It is disclosed solely for use by qualified technicians for purposes of equipment maintenance and service. It is not to be disclosed to others without the express permission of Fender Musical Instruments. All specifications subject to change without notice.

A coded naming convention is used in the description of certain parts. The codes and what they mean follow:

### CAPACITOR CODES

CAP AE = Aluminum Electrolytic  
CAP CD = Ceramic Disk  
CAP MY = Mylar  
CAP PF = Polyester Film  
CAP MPF = Metalized Polyester Film  
CAP CA = Ceramic Axial

### RESISTOR CODES

RES CC = Carbon Comp  
RES CF = Carbon Film  
RES FP = Flame Proof  
RES MF = Metal Film  
RES WW = Wire Wound

### HARDWARE CODES

BLX = Black Oxide  
CR = Chrome Plated  
HWH = Hex Washer Head  
M = Machine Screw  
OHP = Oval Head Phillips  
NI = Nickel Plated  
PHP = Pan Head Phillips  
PB = Particle Board  
PHPS = Pan Head Phillips Sems  
SS = Stainless Steel  
SMA = Sheet Metal "A" point  
TF = Thread Forming  
SMB = Sheet Metal "B" point  
ZI = Zinc Plating



# CHAMP 25 SE PARTS LIST

## PRINTED CIRCUIT BOARD ASSEMBLY

| QTY | PART # | DESCRIPTION                    | REFERENCE    | DESIGNATION   |
|-----|--------|--------------------------------|--------------|---------------|
| 1   | 038876 | PCB ASSY "CHAMP 25SE" 100/120V |              | (STUFFED)     |
| 1   | 038877 | PCB ASSY "CHAMP 25SE" 220/240V |              | (STUFFED)     |
| 1   | 038879 | PCB "CHAMP 25SE"               |              | (BLANK BOARD) |
| 1   | 025722 | CABLE ASSY REVERB 1100mm       |              |               |
| 3   | 026517 | CAP AE AXL 50V 2.2uF 20%       | C8,18,38     |               |
| 2   | 025960 | CAP AE AXL 16V 22uF 20%        | C9,25        |               |
| 4   | 024819 | CAP AE AXL 500V 22uF 20%       | C39,40,41,42 |               |
| 2   | 038689 | CAP AE AXL 100V 47uF 20%       | C14,47       |               |
| 2   | 038873 | CAP CA 100V 22pF 5%            | C52,53       |               |
| 2   | 038698 | CAP CA 100V 47pF 5%            | C28          |               |
| 1   | 038699 | CAP CA 100V 100pF 5%           | C7           |               |
| 1   | 038700 | CAP CA 50V 390pF 5%            | C4           |               |
| 1   | 038701 | CAP CA 50V 470pF 5%            | C15          |               |
| 1   | 038874 | CAP CA 50V 560pF 5%            | C51          |               |
| 2   | 028458 | CAP AE RDL 50V 1uF 20%         | C56,58       |               |
| 4   | 028465 | CAP AE RDL 25V 22uF 20%        | C48,49,60,61 |               |
| 3   | 028471 | CAP AE RDL 50V 47uF 20%        | C45,46,55    |               |
| 1   | 031040 | CAP AE RDL 100V 100uF 20%      | C54          |               |
| 2   | 039362 | CAP AE RDL 35V 1000uF 20%      | C43,44       |               |
| 2   | 027281 | CAP MPF 63V .22uF 10%          | C6,27        |               |
| 2   | 027286 | CAP MPF 63V .47uF 10%          | C5,31        |               |
| 4   | 024845 | CAP MPF 400V .047uF 10%        | C34,35,36,37 |               |
| 3   | 033578 | CAP PF 100V .001uF 10%         | C10,50,57    |               |
| 3   | 033580 | CAP PF 100V .0022uF 10%        | C1,11,22,26  |               |
| 1   | 033586 | CAP PF 100V .0068uF 10%        | C21          |               |
| 1   | 033588 | CAP PF 100V .01uF 10%          | C24          |               |
| 1   | 036234 | CAP PF 100V .015uF 10%         | C29          |               |
| 4   | 033590 | CAP PF 100V .022uF 10%         | C3,12,13,20  |               |
| 2   | 033591 | CAP PF 100V .033uF 10%         | C32,33       |               |
| 2   | 033592 | CAP PF 100V .047uF 10%         | C16,19       |               |
| 1   | 033596 | CAP PF 100V .068uF 10%         | C23          |               |
| 1   | 027937 | CONTROL, SNAPIN 2K 15A         | R12          |               |
| 2   | 027941 | CONTROL, SNAPIN 50K B          | R35,53       |               |
| 3   | 027940 | CONTROL, SNAPIN 50K 15A        | R10,11,37    |               |
| 1   | 027943 | CONTROL, SNAPIN 50K 30C        | R19          |               |
| 2   | 027947 | CONTROL, SNAPIN 100K 30C       | R24,41       |               |
| 1   | 027949 | CONTROL, SNAPIN 250K 30C       | R39          |               |
| 1   | 039053 | CONTROL, SNAPIN 1M 30A         | R82          |               |



# CHAMP 25 SE PARTS LIST

## PRINTED CIRCUIT BOARD ASSEMBLY CONTINUED

| QTY | PART #     | DESCRIPTION                        | REFERENCE DESIGNATION      |
|-----|------------|------------------------------------|----------------------------|
| 15  | 006260     | DIODE, 1N4448 75PRV SIGNA          | CR1-14,27                  |
| 5   | 064089     | DIODE, 1N4003 200PRV, 1AMP         | CR23-26,29                 |
| 4   | 026730     | DIODE, 1N4006 800PRV, 1AMP         | CR17-20                    |
| 1   | 031635     | DIODE,ZENER 1N5240B 10V .5W 5%     | CR28                       |
| 2   | 028119     | DIODE,ZENER 1N5353B 16V, 5W 5%     | CR21,22                    |
| 24  | 025802     | FASTON TAB, .250                   | CP1-34                     |
| 1   | 022546     | FUSE HOLDER,PCB MT UNIVERSAL       | XF1                        |
| 1   | 022547     | FUSE CARRIER, INSERT               | (AT XF1,120V ONLY)         |
| 1   | 021667     | FUSE TD 1-1/4"X1/4" 1AMP (SLO-BLO) | F1 (120V DOMESTIC)         |
| 8   | 020775     | FUSE CLIP,PCB MOUNT 5mm            | XF2,4,5,6 (220/240V)       |
| 1   | 022548     | FUSE CARRIER, INSERT               | (AT XF1 220/240V)          |
| 2   | 013109     | FUSE,5mm 250mA SLO-BLO             | F4,5 (220/240V ONLY)       |
| 2   | 013111     | FUSE,5mm 500mA SLO-BLO             | F1,F2 (220/240V)           |
| 1   | 013681     | FUSE,5mm 5AMP SLO-BLO              | F6 (220/240V ONLY)         |
| 1   | 028120     | IC CMOS 4053B 2 CHAN ANLG SW       | U3                         |
| 1   | 013528     | IC DUAL OP-AMP 4558                | U6                         |
| 4   | 016795     | IC DUAL OP-AMP JFET TLO72CP        | U1,2,4,5                   |
| 1   | 9902205550 | IC TIMER 555                       | U7                         |
| 3   | 037036     | JACK, PHONE, MONO                  | J3,4,5                     |
| 4   | 031570     | JACK, PHONE, STEREO                | J1,2,6,7                   |
| 23  | 020888     | JUMPER WIRE 22GA .5"X.175          | W1-23                      |
| 3   | 026043     | JUMPER WIRE 18GA .8"X.175          | JP2,3,4                    |
| 1   | 028040     | LED 2x2mm RED SLB-22VR3            | LD1                        |
| 1   | 028039     | LED 5x5mm RED SLB-55VR3            | LD2                        |
| 2   | 025818     | RES CF 1/4W 4.7Ω 5%                | R105,112                   |
| 1   | 024945     | RES CF 1/4W 33Ω 5%                 | R85                        |
| 1   | 024947     | RES CF 1/4W 47Ω 5%                 | R49                        |
| 2   | 024956     | RES CF 1/4W 220Ω 5%                | R114,115                   |
| 1   | 024959     | RES CF 1/4W 330Ω 5%                | R69                        |
| 1   | 024963     | RES CF 1/4W 680Ω 5%                | R94                        |
| 3   | 024965     | RES CF 1/4W 1K 5%                  | R20,33,56                  |
| 4   | 024969     | RES CF 1/4W 1.5K 5%                | R7,74,75,80                |
| 1   | 024971     | RES CF 1/4W 2.2K 5%                | R18                        |
| 5   | 024973     | RES CF 1/4W 3.3K 5%                | R6,31,51,84,86             |
| 6   | 024977     | RES CF 1/4W 4.7K 5%                | R32,48,95,96,97,98         |
| 2   | 025942     | RES CF 1/4W 7.5K 5%                | R17,23                     |
| 1   | 024980     | RES CF 1/4W 8.2K 5%                | R22                        |
| 9   | 024981     | RES CF 1/4W 10K 5%                 | R5,27,50,60,62,65,67,70,71 |
| 1   | 024986     | RES CF 1/4W 18K 5%                 | R30                        |
| 2   | 024987     | RES CF 1/4W 22K 5%                 | R9,13                      |
| 6   | 024989     | RES CF 1/4W 33K 5%                 | R1,2,21,26,87,103          |
| 4   | 024993     | RES CF 1/4W 47K 5%                 | R34,36,40,44               |
| 1   | 024994     | RES CF 1/4W 56K 5%                 | R42                        |



# CHAMP 25 SE

## PARTS LIST

### PRINTED CIRCUIT BOARD ASSEMBLY CONTINUED

| QTY | PART #     | DESCRIPTION                  | REFERENCE DESIGNATION  |
|-----|------------|------------------------------|------------------------|
| 2   | 028153     | RES CF 1/4W 75K 5%           | R29,104                |
| 5   | 024997     | RES CF 1/4W 100K 5%          | R38,59,64,88,101       |
| 1   | 025058     | RES CF 1/4W 180K 5%          | R14                    |
| 2   | 025059     | RES CF 1/4W 220K 5%          | R16,46                 |
| 1   | 025060     | RES CF 1/4W 270K 5%          | R43                    |
| 2   | 025061     | RES CF 1/4W 330K 5%          | R76,77                 |
| 1   | 028844     | RES CF 1/4W 360K 5%          | R47                    |
| 3   | 025065     | RES CF 1/4W 470K 5%          | R25,45,52              |
| 1   | 029618     | RES CF 1/4W 910K 5%          | R93                    |
| 6   | 025069     | RES CF 1/4W 1M 5%            | R4,61,63,66,68,81      |
| 1   | 025071     | RES CF 1/4W 1.2M 5%          | R28                    |
| 1   | 025074     | RES CF 1/4W 1.8M 5%          | R54                    |
| 2   | 025084     | RES CF 1/4W 10M 5%           | R8,15                  |
| 2   | 031767     | RES CF 1/2W 15Ω 5%           | R100,106               |
| 1   | 028861     | RES CF 1/2W 3.3K 5%          | R58                    |
| 2   | 036956     | RES CF 1/2W 33K 5%           | R78,79                 |
| 1   | 039186     | RES CF 1/2W 330K 5%          | R83                    |
| 1   | 036957     | RES CF 1/2W 470K 5%          | R90                    |
| 1   | 039128     | RES CF 1W 120Ω 5%            | R110                   |
| 1   | 028045     | RES CF 1W 220Ω 5%            | R99                    |
| 2   | 028740     | RES CF 1W 470Ω 5%            | R108,109               |
| 1   | 028021     | RES CF 2W 470Ω 5%            | R57                    |
| 1   | 027356     | RES CF 2W 1.8K 5%            | R111                   |
| 1   | 027749     | RES MF FUSED1/4W 22Ω 5%      | R102 (FUSE TYPE)       |
| 2   | 036468     | RES FP MOX 1W 470Ω 5%        | R72,73                 |
| 1   | 037664     | RES FP MOX 1W 1K 5%          | R113                   |
| 1   | 036470     | RES FP MOX 1W 10K 5%         | R89                    |
| 2   | 039212     | RES FP MOX 2W 100Ω 5%        | R91,92                 |
| 1   | 025944     | RES WW BT 10W 15Ω 10%        | R107 (FOOTED RESISTOR) |
| 7   | 031172     | SCREW #6-32X3/8" PHP SS      | (STANDOFF MOUNT)       |
| 4   | 017433     | SCREW #6-32X3/8" PHP BLX     | (TUBE SOCKET MOUNT)    |
| 1   | 029167     | SOCKET TUBE 9PIN PCB MOUNT   | XV3                    |
| 2   | 029343     | SOCKET TUBE 8PIN PCB MOUNT   | XV1,2                  |
| 2   | 9904701440 | SPACER LED .7x.125 BLUE      | (AT LD1, LD2)          |
| 8   | 025936     | STANDOFF NYLON PCB PUSH ON   | (PCB/CHASSIS MOUNT)    |
| 7   | 016440     | STANDOFF RND AL #6-32X1-1/4" | (TUBE SKT/PCB MNT)     |
| 2   | 028091     | SWITCH PUSH 2P2T SLFLK       | S1,2                   |
| 2   | 028101     | SWITCH-BUTTON PUSH RED       | (AT S1, S2)            |
| 1   | 026446     | SWITCH 2P2T SLIDE "220/240"  | S5 (EXPORT UNIT ONLY)  |



# CHAMP 25 SE PARTS LIST

## CHASSIS ASSEMBLY

| QTY | PART # | DESCRIPTION                     | REFERENCE DESIGNATION    |
|-----|--------|---------------------------------|--------------------------|
| 1   | 038887 | CHASSIS ASSY CH25SE 120V        |                          |
| 1   | 026038 | BUSHING SR .625x.062x37/64 BLK  | (POWER CABLE 120V)       |
| 1   | 010401 | BUSHING SR .625x.125x37/64 WHT  | (POWER CABLE 220/240V)   |
| 1   | 021709 | BUSHING SR .437x.062x13/32 BLK  | (SPEAKER CABLE)          |
| 1   | 026116 | BUSHING SR .500x.063x7/16 BLK   | (REVERB CABLE)           |
| 1   | 026527 | CABLE ASSY POWER W/.187 TABS    | (POWER CABLE 100/120V)   |
| 1   | 026528 | CABLE ASSY POWER W/.187 TABS    | (POWER CABLE 220/240V)   |
| 1   | 038886 | CHASSIS "CHAMP 25SE"            | (BLANK CHASSIS)          |
| 1   | 028560 | ENDBELL XFMR 85W                | (AT POWER XFORMER)       |
| 12  | 026403 | KNOB POINTER BLACK 180 DEG      |                          |
| 4   | 028591 | NUT ACORN #8-32                 | (POWER XFMR MOUNT)       |
| 2   | 022004 | NUT KEPS #8-32 ZINC             | (OUTPUT XFMR MOUNT)      |
| 1   | 038890 | PANEL,FRONT LEXAN "CHAMP 25SE"  | (ALL VOLTAGES)           |
| 1   | 038891 | PANEL,REAR LEXAN "CHAMP 25SE"   | (100/120V ONLY)          |
| 1   | 039211 | PANEL,REAR LEXAN "CHAMP 25SE"   | (220/240V ONLY)          |
| 2   | 026553 | SCREW M 8-32X3/8" PHP BLX       | (OUTPUT XFMR MOUNT)      |
| 8   | 028937 | SCREW TF 6-32X5/8" PHP ZI ROLOK | (POWER SUPPLY MOUNT)     |
| 3   | 032806 | SCREW M TF 6-32X1/4" PHP BLX    | (GND LUG MOUNT)          |
| 3   | 017433 | SCREW M 6-32X3/8" PHP BLX       | (PCB TO CHASSIS MOUNT)   |
| 2   | 025935 | SWITCH,POWER DPST               | (POWER/STANDBY)          |
| 2   | 039215 | TUBE RETAINER, SPRING           | (AT V1,V2)               |
| 2   | 039214 | TUBE,5881/6L6WGC SOVTEC         | V1,2                     |
| 1   | 013341 | TUBE 12AX7A                     | V3                       |
| 4   | 030007 | WSHR LCK INTL 8X.330X.02 ZI     | (POWER XFMR MOUNT)       |
| 2   | 039064 | WSHR EPDM TUBE CLAMP DAMPNER    | (AT V1,V2 TUBECLAMP)     |
| 1   | 039043 | XFMR POWER "CHAMP 25SE"         | T2 (DOMESTIC 120V)       |
| 1   | 039044 | XFMR POWER "CHAMP 25SE"         | T2 (EXPORT.100/220/240V) |
| 1   | 039054 | XFMR OUTPUT "CHAMP 25SE"        | T1                       |

## CABINET ASSEMBLY

| QTY | PART # | DESCRIPTION                   | REFERENCE DESIGNATION |
|-----|--------|-------------------------------|-----------------------|
| 1   | 038885 | BACK ASSY UPPER "CHAMP 25SE"  |                       |
| 1   | 038883 | CABINET ASSY "CHAMP 25SE"     | (COMPLETE CABINET)    |
| 1   | 022491 | CLAMP CABLE NYL SCRW MNT 5/16 | (REVERB CABLE MT)     |
| 2   | 031838 | CORNER 2 HOLE W/TAB BLK PWR   | (REAR TOP)            |
| 4   | 031867 | CORNER 2 HOLE W/NTCH BLK PWR  | (FRONT,TOP/BOTTOM)    |
| 2   | 031840 | CORNER 3 HOLE BLK PWR         | (REAR BOTTOM)         |
| 4   | 029821 | EYELET RFLNGD .215ODX.315L    | (REVERB PAN MOUNT)    |



# CHAMP 25 SE PARTS LIST

## CABINET ASSEMBLY CONTINUED

| QTY   | PART #     | DESCRIPTION                      | REFERENCE DESIGNATION  |
|-------|------------|----------------------------------|------------------------|
| 4     | 027849     | FLOOR GLIDE BLK                  | (METAL)                |
| 4     | 019275     | FLOOR GLIDE CUSHION INSERT       | (RUBBER)               |
| 1     | 038884     | GRILLE ASSY.CHAMP 25SE           | (COMPLETE GRILLE)      |
| 1     | 027846     | HANDLE                           | (RUBBER)               |
| 2     | 031845     | HANDLE CAP BLK PWD CT            | (SPRING STEEL)         |
| 1     | 032524     | HANDLE INSERT                    | (LOGO)                 |
| 1     | 011298     | NAMEPLATE FENDER USA SMALL       | (PAN/TANK)             |
| 1     | 028055     | REVERB UNIT 800 ohm 8EB2C1B      | (SPEAKER MOUNT)        |
| 4     | 026577     | SCREW M 10-32X1 PHP BLX          | (CHASSIS MOUNT)        |
| 6     | 9904101550 | SCREW M 8-32X1-1/4 OHPS BLX WX   | (HANDLE MOUNT)         |
| 4     | 017393     | SCREW M 10-32X1-1/8 OHP BLK      | (REVERB PAN/CLAMP MNT) |
| 5     | 029828     | SCREW PB 8X3/4 PHP ZI            | (LOGO MOUNT)           |
| 2     | 018113     | SCREW SMA 4X1/2 OHP BLX          | (BACK BOARD MOUNT)     |
| 4     | 036112     | SCREW SMAB 6X1-1/4 OHP BLX W/W/S | (GRILLE MOUNT)         |
| 2     | 011678     | SCREW SMA 8X1-1/2 OHP BLX        | (CORNER MOUNT)         |
| 14    | 026576     | SCREW SMA 8X5/8 TH BLK           | (GLIDE MOUNT)          |
| 4     | 026625     | SCREW WOOD 8X1 FH                |                        |
| 1     | 025923     | SPEAKER 12"                      |                        |
| 8     | 021972     | TEE NUT 10-32 BLK                | (HANDLE/SPEAKER MT)    |
| 1.012 | 026570     | VINYL BLACK                      |                        |
| 8     | 029527     | WSHR FINISH 8-5/8 FLNGD BLX WX   | (CHASSIS/GRILLE MT)    |

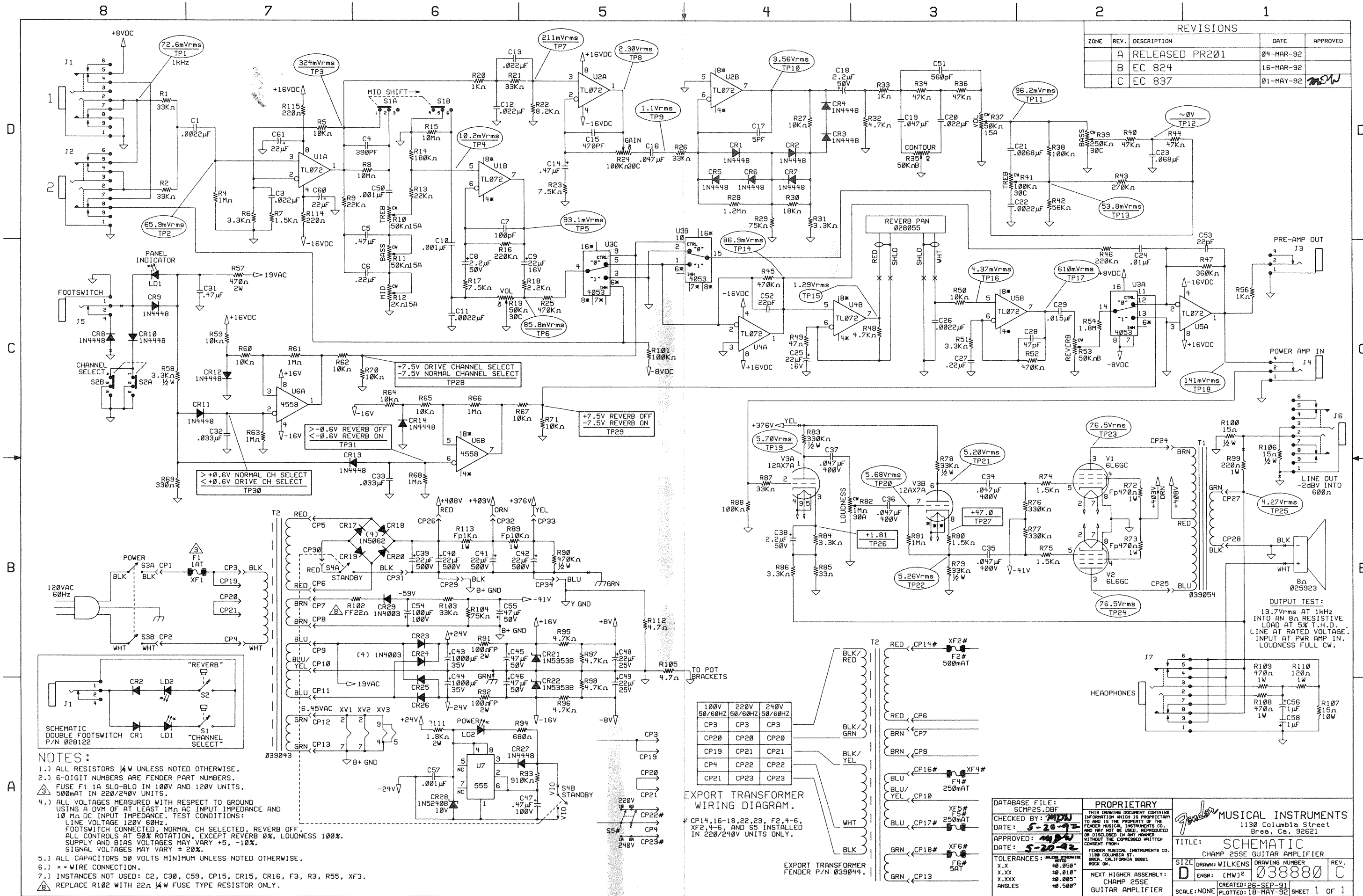
## FOOTSWITCH ASSEMBLY

| QTY | PART # | DESCRIPTION                  | REFERENCE DESIGNATION |
|-----|--------|------------------------------|-----------------------|
| 1   | 028122 | FOOTSWITCH ASSY 2 BUTTON     | (COMPLETE FOOTSWITCH) |
| 1   | 028895 | CABLE ASSY FTSW RT ANG 12'   | (FOOTSWITCH CABLE)    |
| 2   | 006260 | DIODE 1N4448 SIGNAL          | CR1,2                 |
| 2   | 028039 | LED 5x5mm RED SLB-55VR3      | LD1,2                 |
| 2   | 028714 | SWITCH PUSH SPDT             | S1,2                  |
| 1   | 037036 | JACK PHONE PCB MONO PREMIUM  | J1                    |
| 2   | 031899 | WASHER NYL .485x.775x.150 TK | (SPACER ON SWITCH)    |

## MISCELLANEOUS

| QTY | PART # | DESCRIPTION                            | REFERENCE DESIGNATION |
|-----|--------|--|-----------------------|
| 1   | 039204 | OWNERS MANUAL "CHAMP 25SE"             |                       |
| 1   | 038881 | SCHEMATIC/SERVICE DIAGRAM "CHAMP 25SE" | (REDUCED)             |

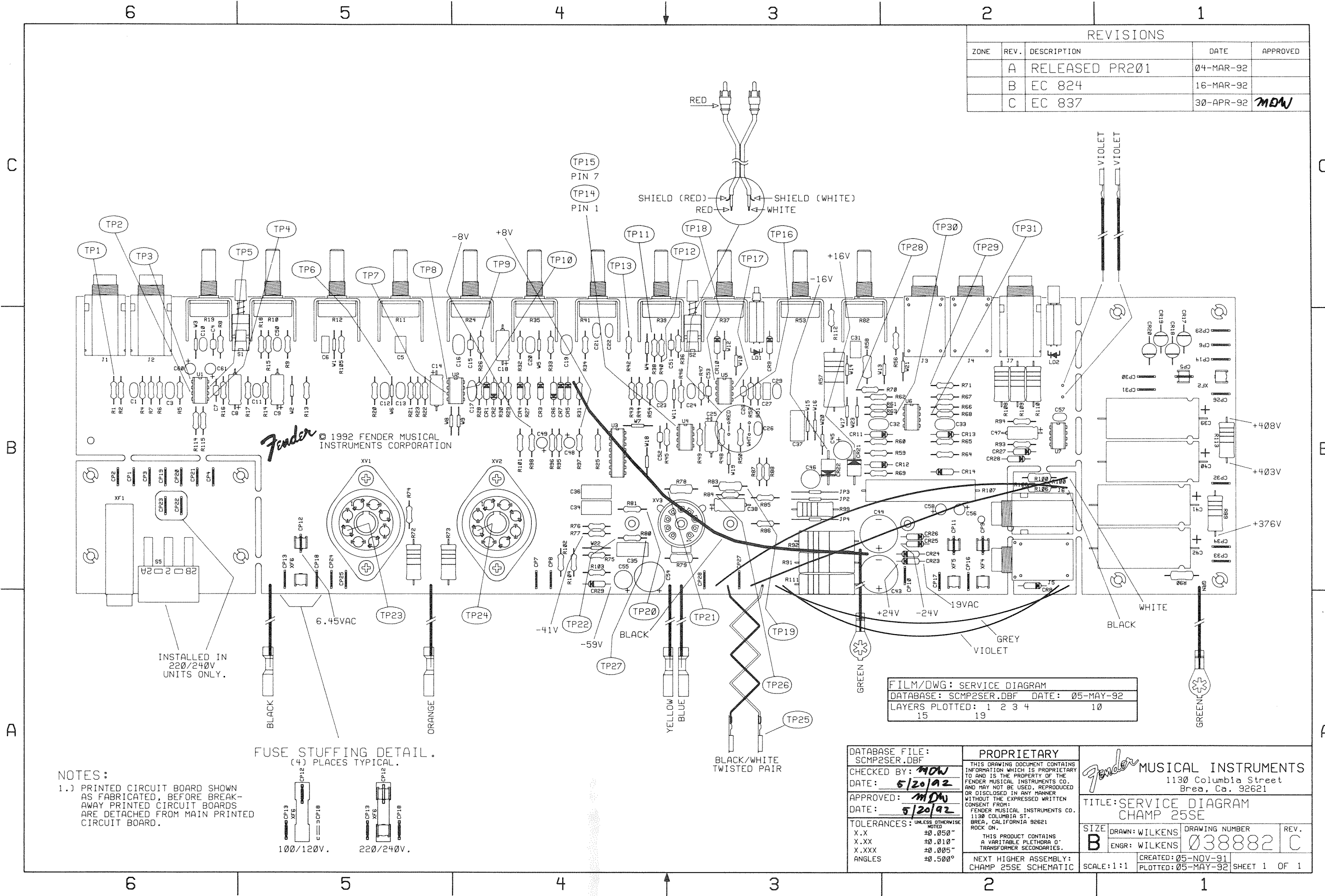
| REVISIONS |      |                |           |          |
|-----------|------|----------------|-----------|----------|
| ZONE      | REV. | DESCRIPTION    | DATE      | APPROVED |
|           | A    | RELEASED PR201 | 04-MAR-92 |          |
|           | B    | EC 824         | 16-MAR-92 |          |
|           | C    | EC 837         | 01-MAY-92 | MDW      |



0038881000

|  |  |  |
|--|--|--|
| DATABASE FILE:<br>SCMP25.DBF<br>CHECKED BY: MDW<br>DATE: 5-20-92<br>APPROVED: MDW<br>DATE: 5-20-92<br>TOLERANCES: UNLESS OTHERWISE NOTED<br>.XX .50%<br>X.XX .01%<br>X.XXX .005%<br>ANGLES .500° | <b>PROPRIETARY</b><br>THIS DRAWING DOCUMENT CONTAINS INFORMATION WHICH IS PROPRIETARY TO AND IS THE PROPERTY OF THE FENDER MUSICAL INSTRUMENTS CO. AND MAY NOT BE USED, REPRODUCED OR DISCLOSED IN ANY MANNER WITHOUT THE EXPRESSED WRITTEN CONSENT FROM:<br>FENDER MUSICAL INSTRUMENTS CO.<br>1130 COLUMBIA ST.<br>BREA, CALIFORNIA 92621<br>ROCK ON. | <b>Fender MUSICAL INSTRUMENTS</b><br>1130 Columbia Street<br>Brea, Ca. 92621<br>TITLE: SCHEMATIC<br>CHAMP 25SE GUITAR AMPLIFIER<br>SIZE: D<br>DRAWN: WILKENS<br>ENGR: [MW]<br>DRAWING NUMBER: 038880<br>REV. C<br>CREATED: 26-SEP-91<br>SCALE: NONE<br>PLOTTED: 18-MAY-92 SHEET 1 OF 1 |
|--|--|--|

| REVISIONS |      |                |           |            |
|-----------|------|----------------|-----------|------------|
| ZONE      | REV. | DESCRIPTION    | DATE      | APPROVED   |
|           | A    | RELEASED PR201 | 04-MAR-92 |            |
|           | B    | EC 824         | 16-MAR-92 |            |
|           | C    | EC 837         | 30-APR-92 | <i>MDW</i> |



FILM/DWG: SERVICE DIAGRAM  
 DATABASE: SCMP2SER.DBF DATE: 05-MAY-92  
 LAYERS PLOTTED: 1 2 3 4 10  
 15 19

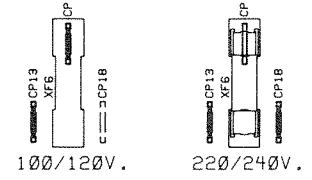
DATABASE FILE: SCMP2SER.DBF  
 CHECKED BY: *MDW*  
 DATE: 5/20/92  
 APPROVED: *MDW*  
 DATE: 5/20/92  
 TOLERANCES: UNLESS OTHERWISE NOTED  
 X.X ±0.050"  
 X.XX ±0.010"  
 X.XXX ±0.005"  
 ANGLES ±0.500°

PROPRIETARY  
 THIS DRAWING DOCUMENT CONTAINS INFORMATION WHICH IS PROPRIETARY TO AND IS THE PROPERTY OF THE FENDER MUSICAL INSTRUMENTS CO. AND MAY NOT BE USED, REPRODUCED OR DISCLOSED IN ANY MANNER WITHOUT THE EXPRESSED WRITTEN CONSENT FROM:  
 FENDER MUSICAL INSTRUMENTS CO.  
 1130 COLUMBIA ST.  
 BREAS, CALIFORNIA 92621  
 ROCK ON.  
 THIS PRODUCT CONTAINS A VARIABLE FLETHMRA O-TRANSFORMER SECONDARIES.

**Fender** MUSICAL INSTRUMENTS  
 1130 Columbia Street  
 Brea, Ca. 92621  
 TITLE: SERVICE DIAGRAM  
 CHAMP 25SE  
 SIZE: B DRAWN: WILKENS ENGR: WILKENS  
 DRAWING NUMBER: 038882  
 REV. C  
 NEXT HIGHER ASSEMBLY: CHAMP 25SE SCHEMATIC  
 SCALE: 1:1  
 CREATED: 05-NOV-91 PLOTTED: 05-MAY-92  
 SHEET 1 OF 1

NOTES:  
 1.) PRINTED CIRCUIT BOARD SHOWN AS FABRICATED, BEFORE BREAK-AWAY PRINTED CIRCUIT BOARDS ARE DETACHED FROM MAIN PRINTED CIRCUIT BOARD.

FUSE STUFFING DETAIL.  
 (4) PLACES TYPICAL.



INSTALLED IN 220/240V UNITS ONLY.