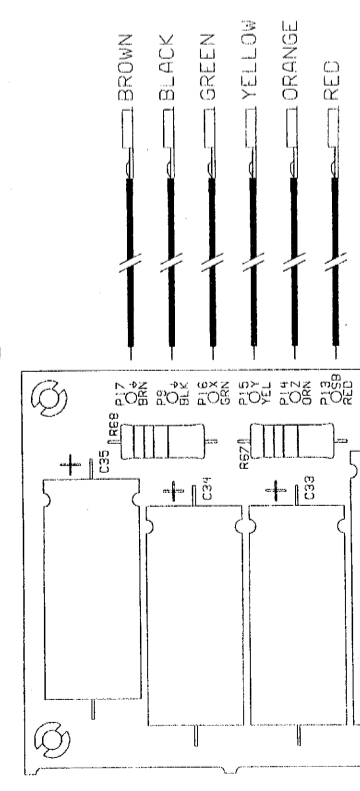
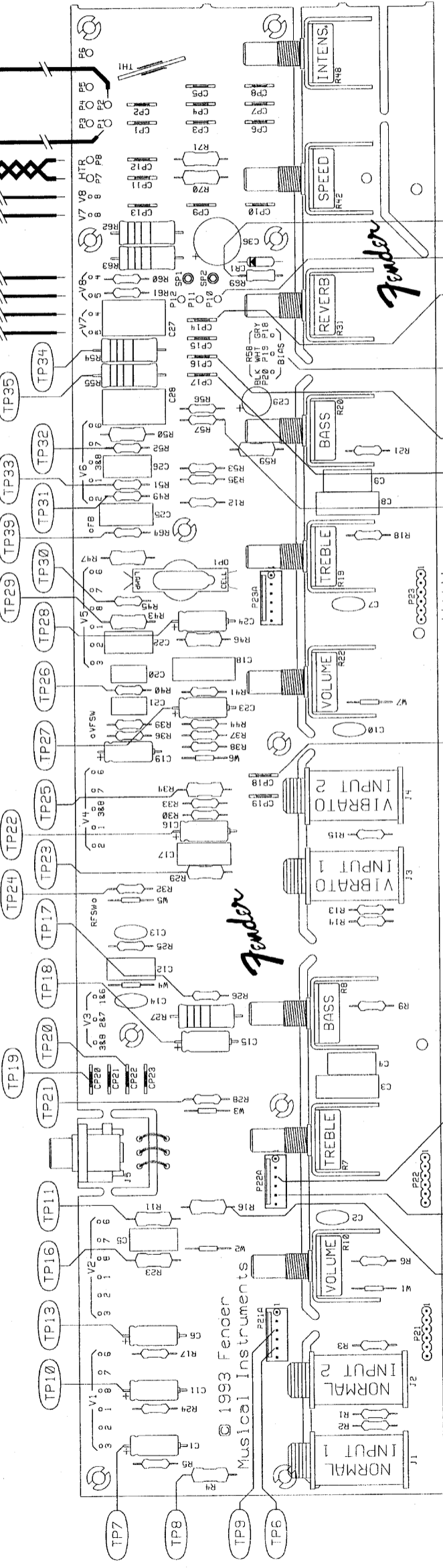
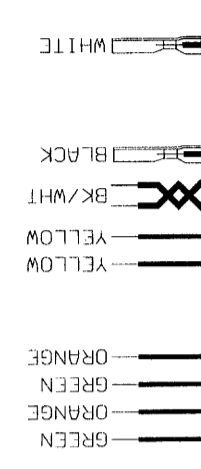
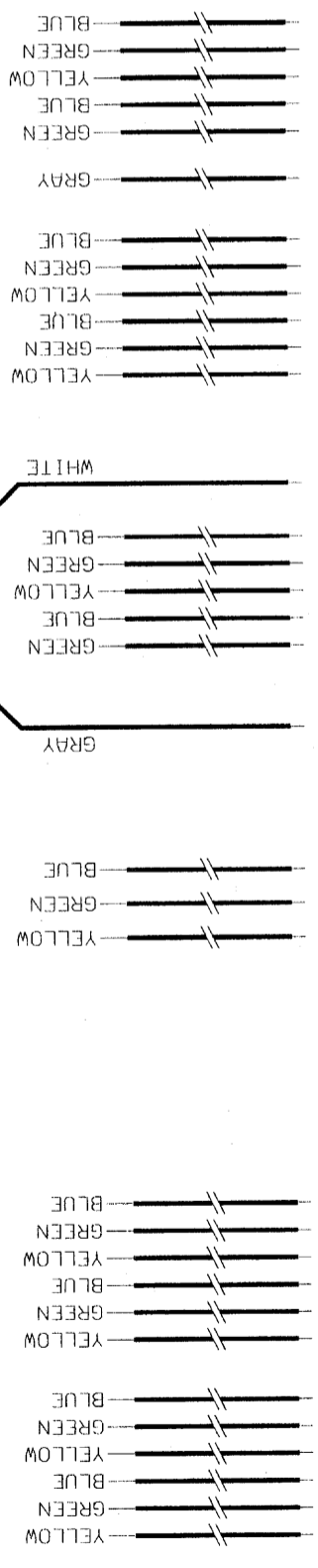


1 2 3 4 5 6 7 8

REVISIONS

ZONE	REV.	DESCRIPTION	DATE	APPROVED
	A	RELEASED PR#239	7-2-93	
	B	EC#1694	5-13-96	



PCB SHOWN AS FABRICATED,
EXCEPT WITH CAPACITOR BREAK-
AWAY BOARD SEPARATED

FLEX CABLE INSTALLED
AT P21, P22 AND P23
(3 PLACES)



Fender MUSICAL INSTRUMENTS
2621 Research Drive
Corona, CA 91720 USA

PROPRIETARY
THIS DRAWING DOCUMENT CONTAINS
INFORMATION WHICH IS PROPRIETARY
TO AND IS THE PROPERTY OF THE
FENDER MUSICAL INSTRUMENTS CO.
AND MAY NOT BE USED, REPRODUCED
OR TRANSMITTED IN ANY FORM OR
BY ANY MEANS, WITHOUT THE EXPRESS
CONSENT FROM:
FENDER MUSICAL INSTRUMENTS CO.
REGIONAL HEADQUARTERS
2621 RESEARCH DRIVE
CORONA, CA 91720 USA

TITLE: SERVICE DIAGRAM
65 DELUXE REVERB AMPLIFIER

SIZE: DRAWN: B, DESI: B
DRAWING NUMBER: 041287
ENGR: B, DESI: B

REV. B

SCALE: 1 OF 1

CREATED: 02-JUN-93
PLOTTED: 07-JUN-96

DATABASE FILE: 65DLXSR

CHECKED BY:

DATE:

APPROVED:

DATE:

TOLERANCES: UNLESS OTHERWISE
NOTED:
X.XX ±0.050"
X.XXX ±0.010"
X.XXX ±0.005"
ANGLES

FILM/DWG: SERVICE DIAGRAM
DATABASE: 65DLXSR DATE: 07-JUN-96
LAYERS PLOTTED: 1 2 3 4 10 15

1 2 3 4 5 6 7 8