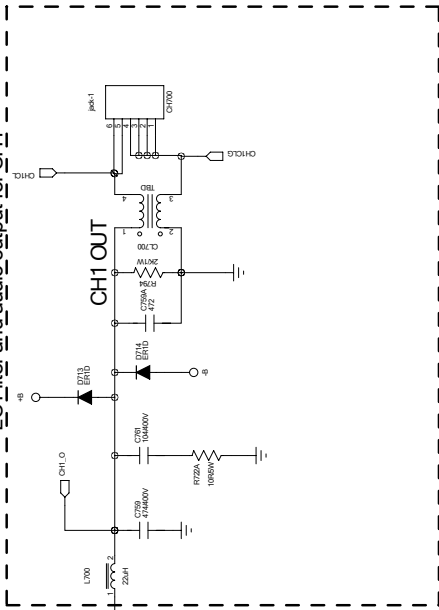
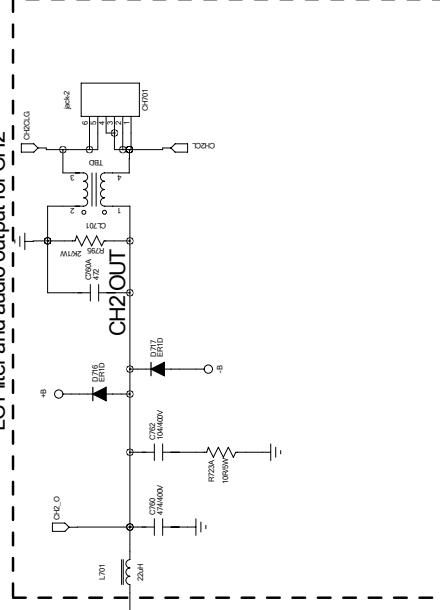


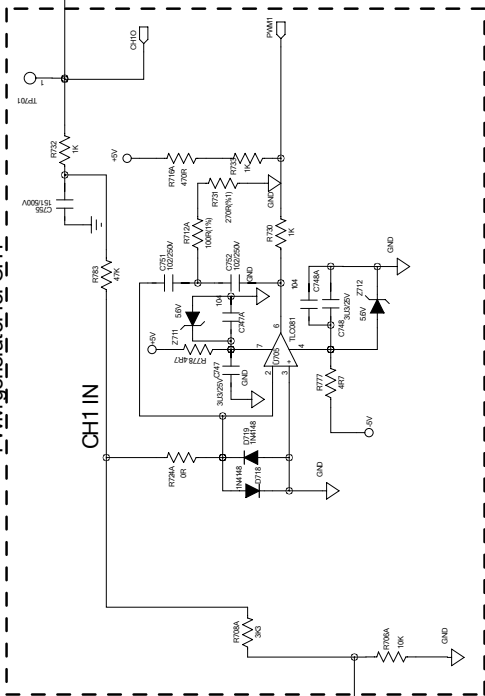
LC Filter and audio output for CH1



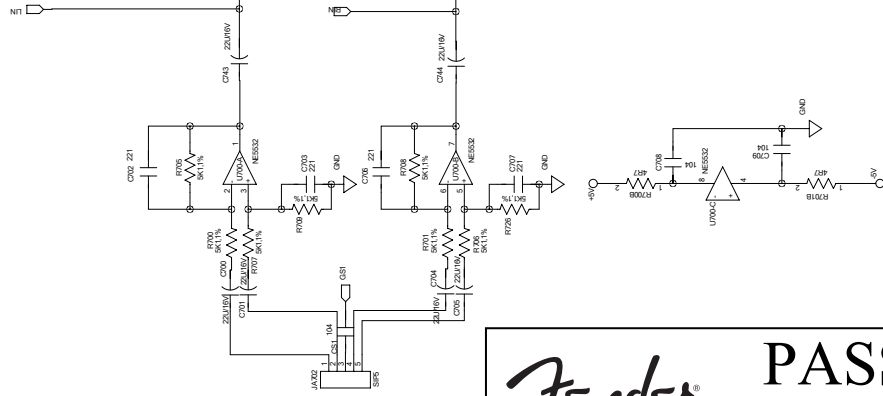
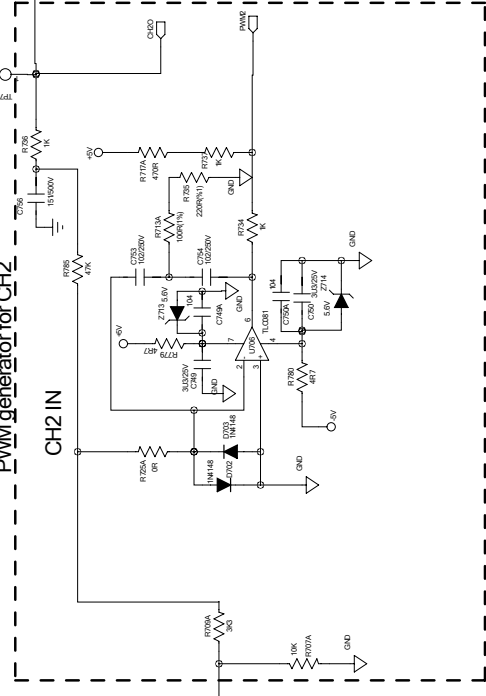
LC Filter and audio output for CH2



PWM generator for CH1

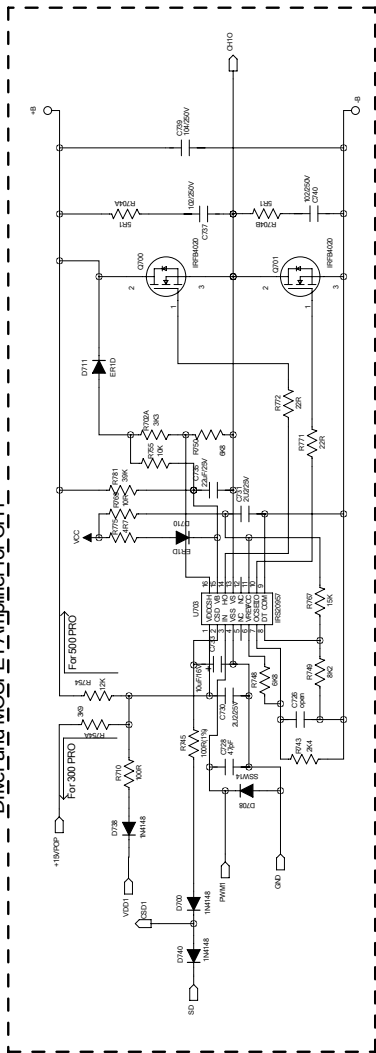


PWM generator for CH2

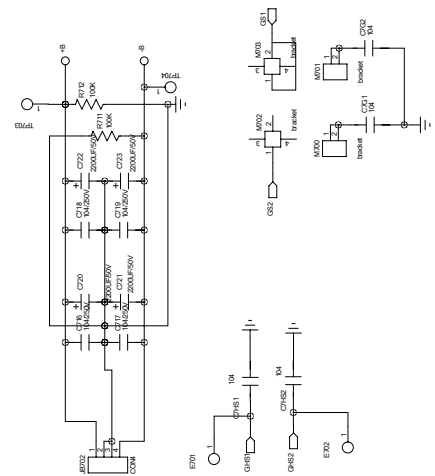
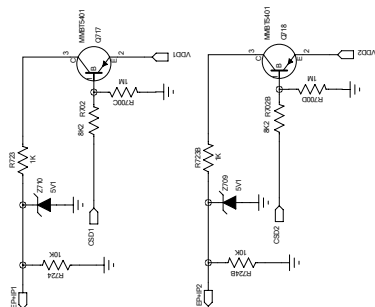
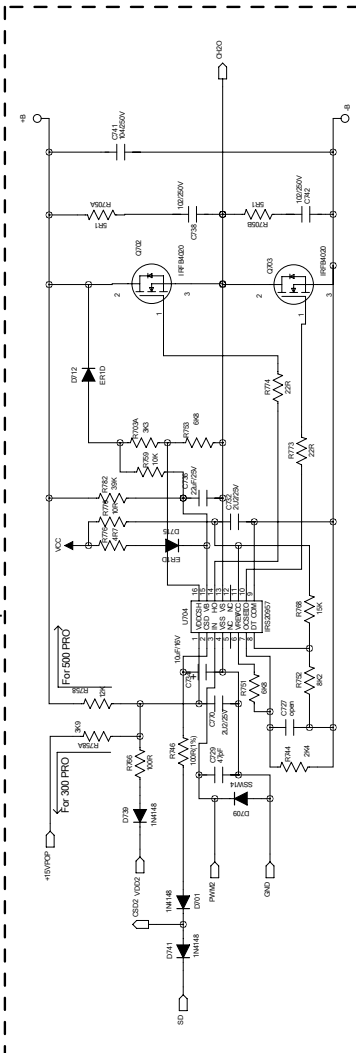


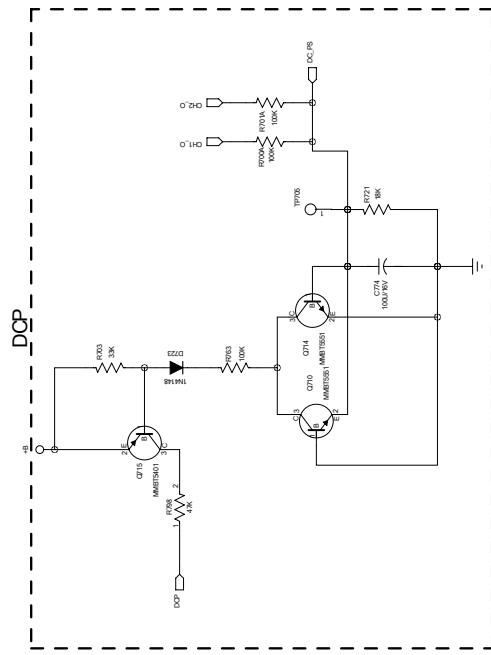
Fender PASSPORT  
AMP Schematic Diagram – 1/3

Driver and MOSFET Amplifier for CH1

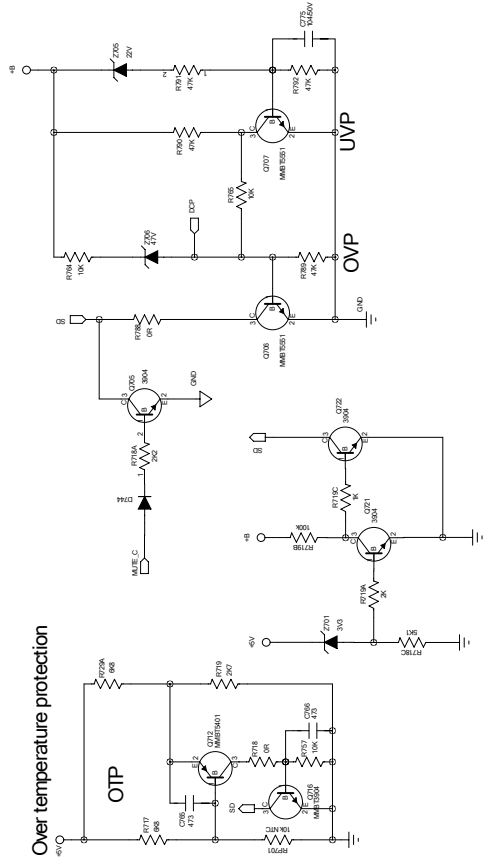
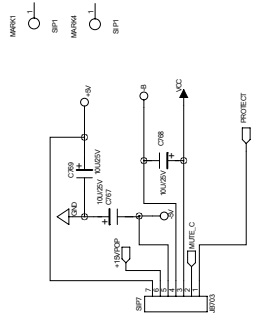


Driver and MOSFET Amplifier for CH2



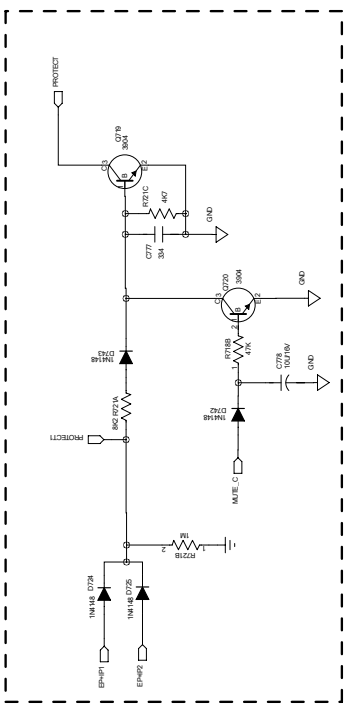


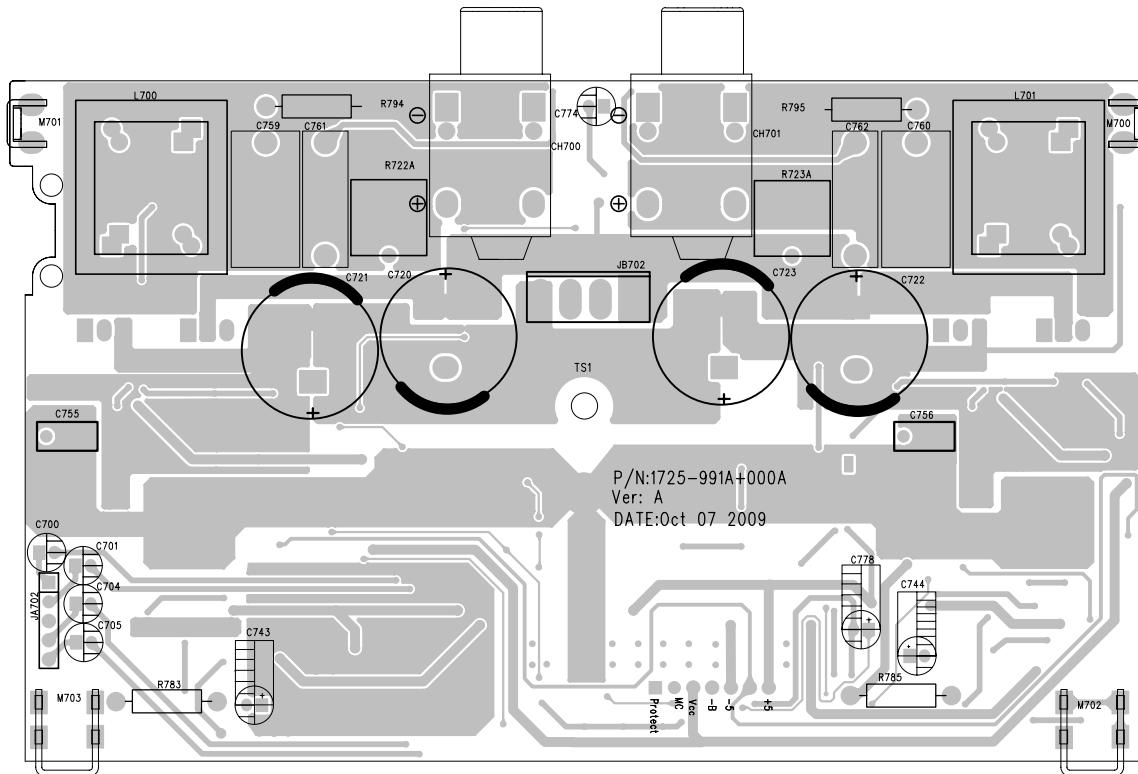
DCP



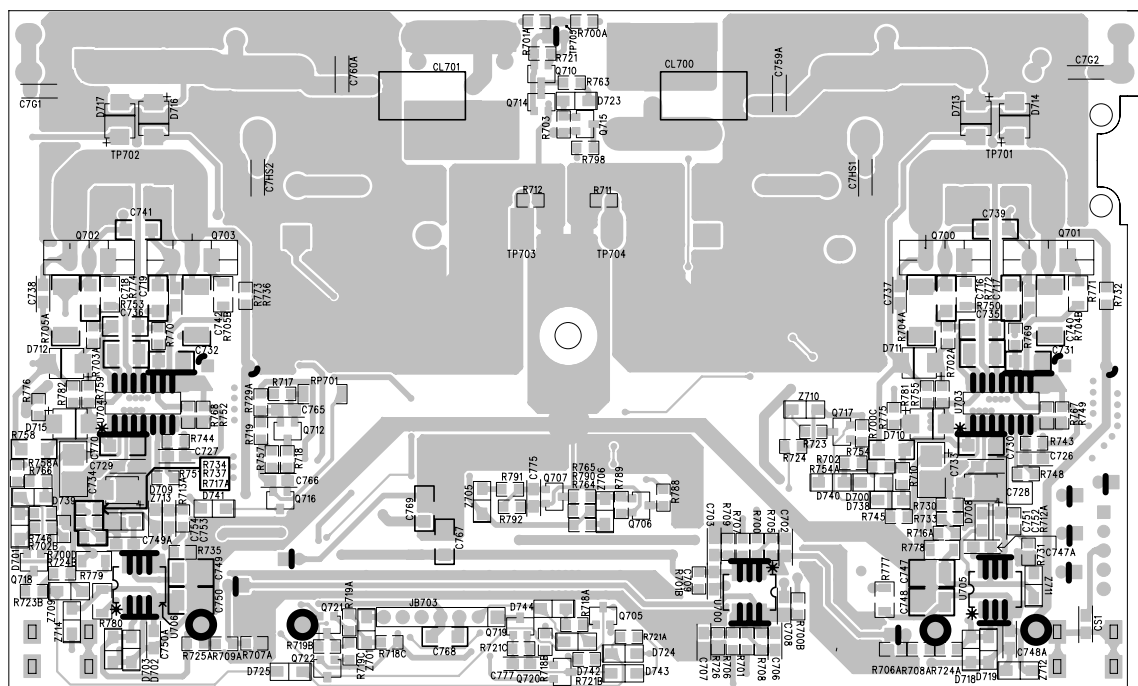
Over temperature protection

PROTECTED CONTROL



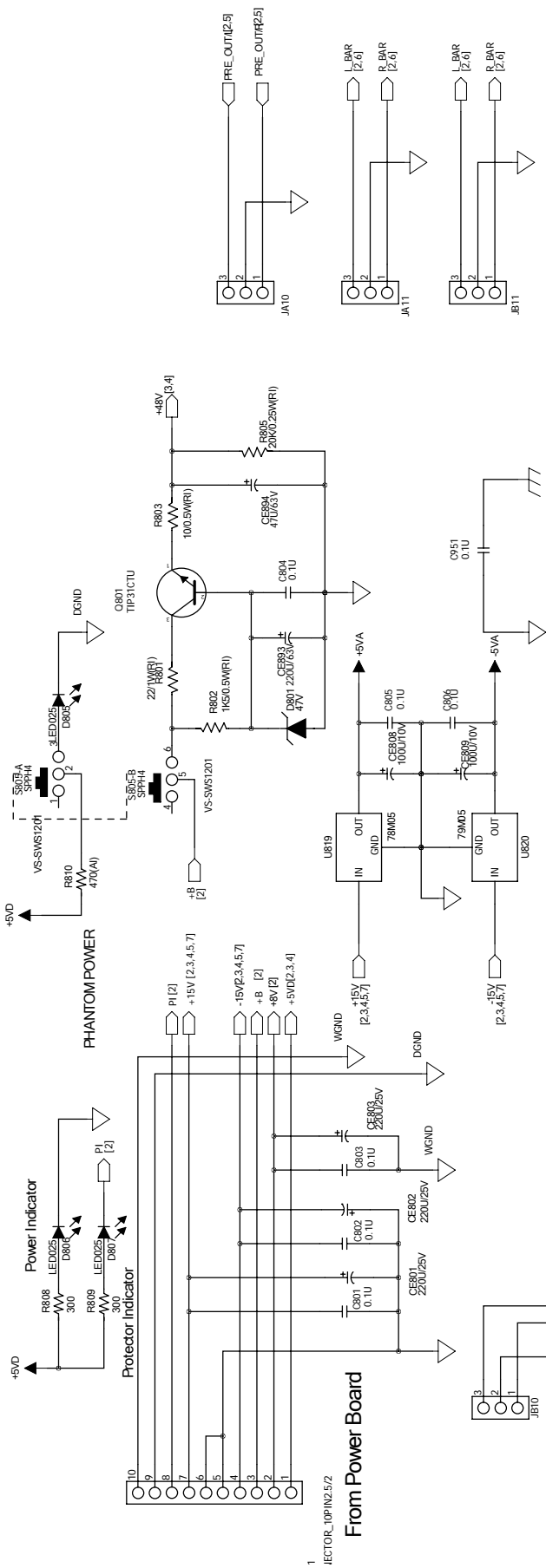


AMP PCB top side

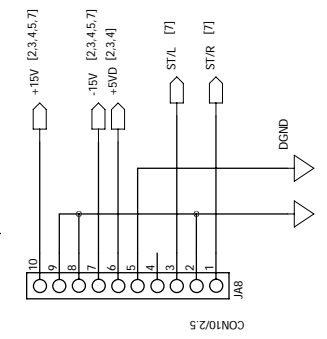
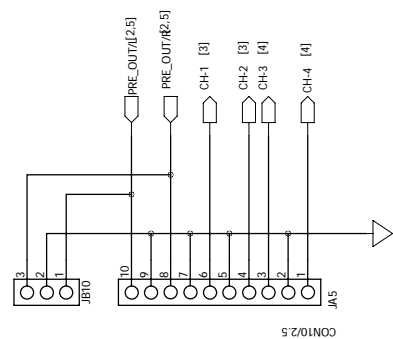


AMP PCB bottom side

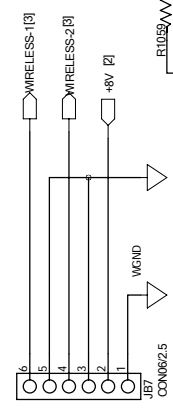
*Fender* **PASSPORT**  
AMP PCB



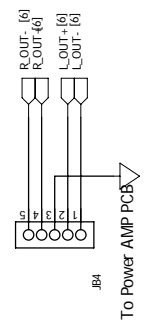
**TO WIRELESS BOARD**



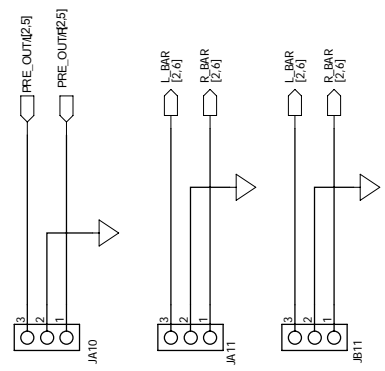
Connect to Mixer Board



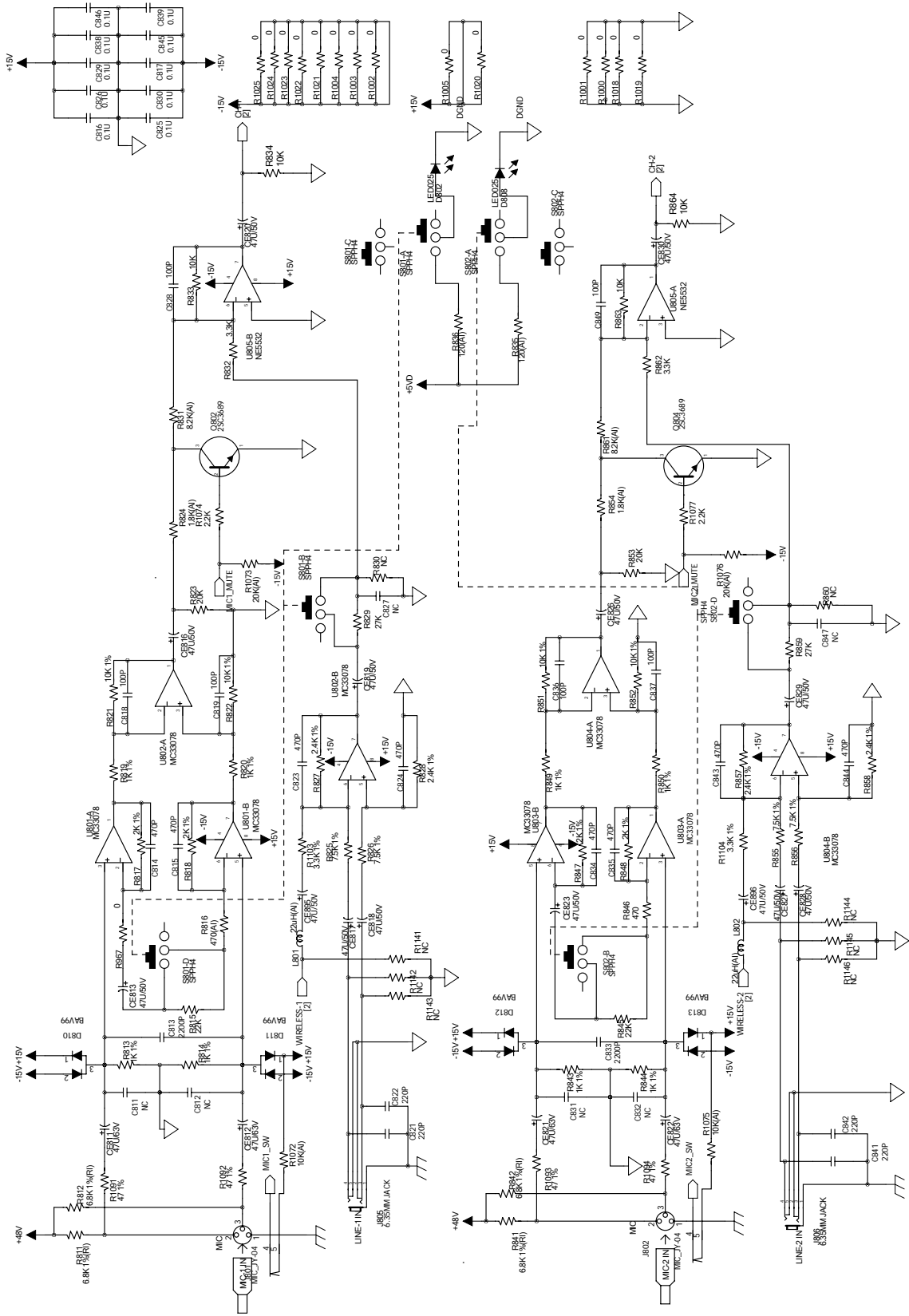
For Grounding Option



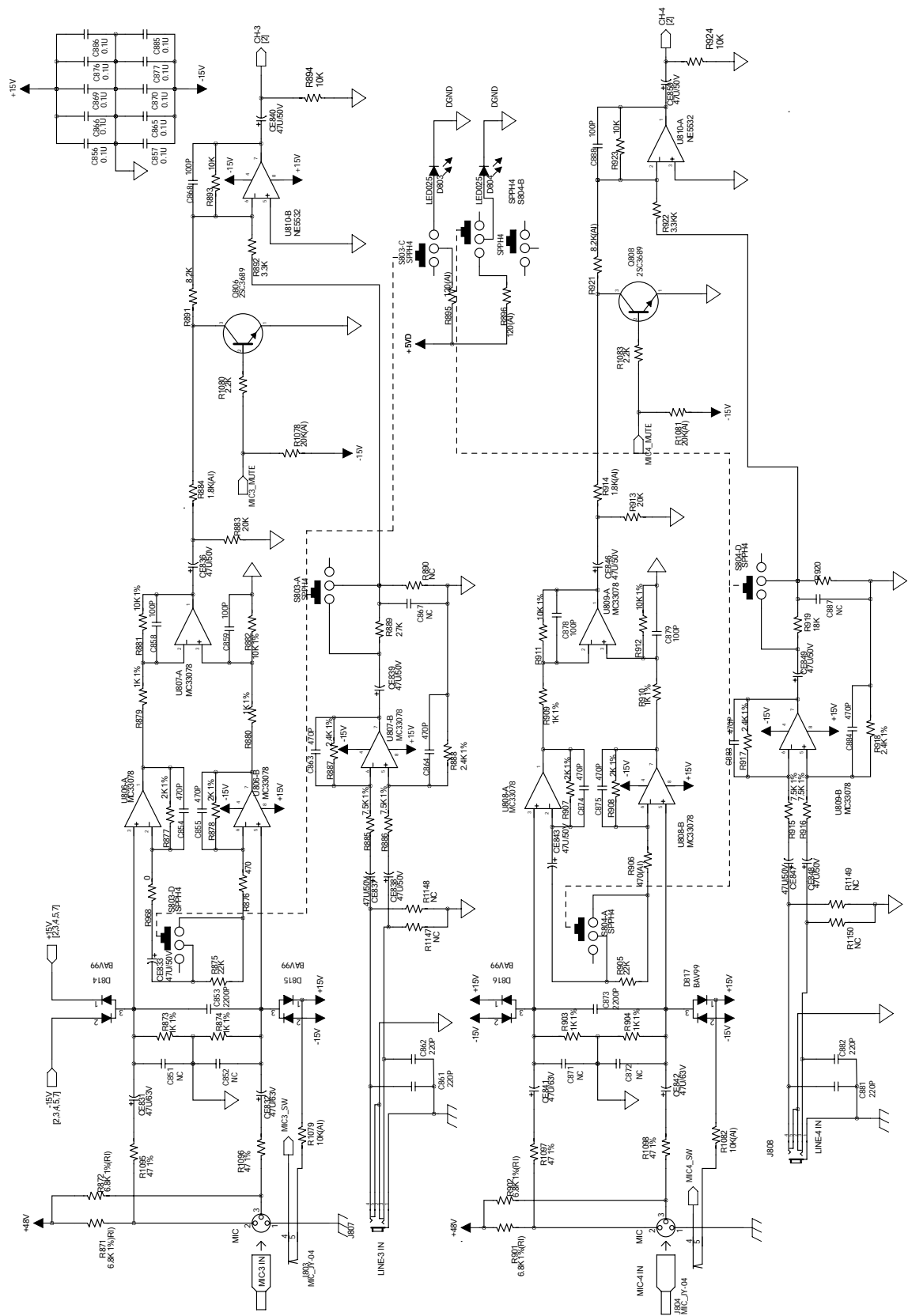
To Power AMP PCB



**Fender** **PASSPORT**  
Input Schematic Diagram – 1/6

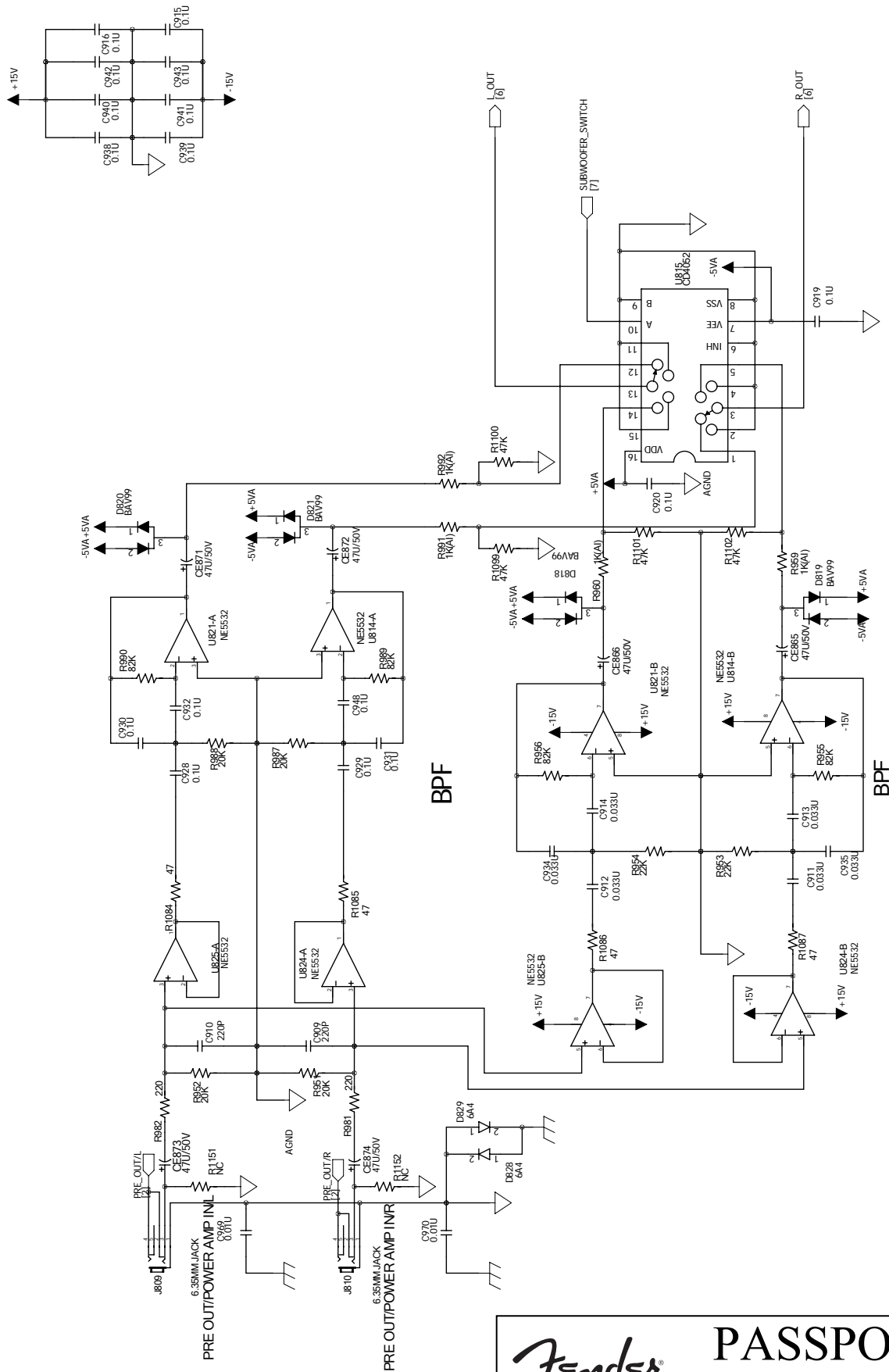


*Fender* **PASSPORT**  
Input Schematic Diagram – 2/6



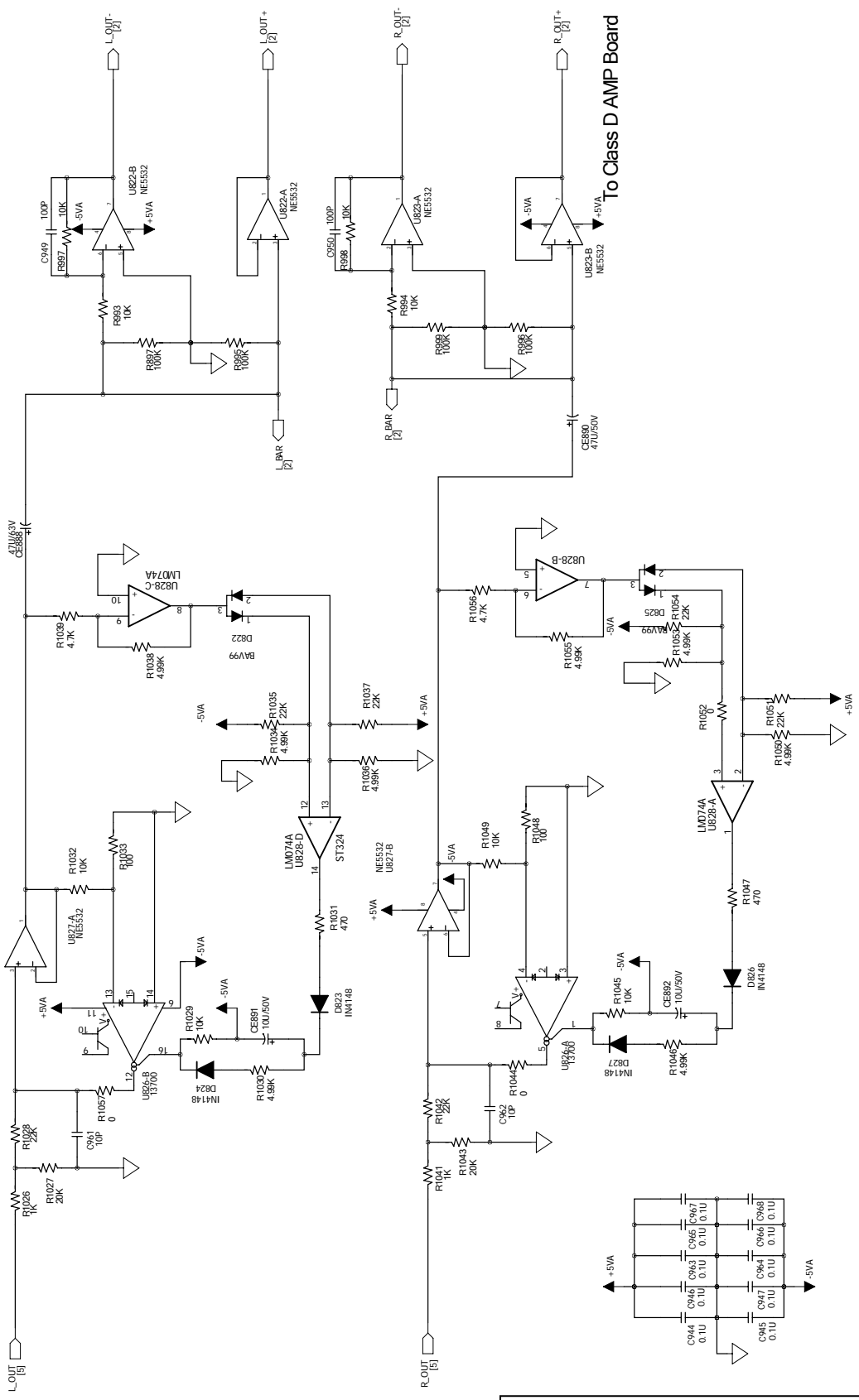
# Fender PASSPORT

## Input Schematic Diagram – 3/6



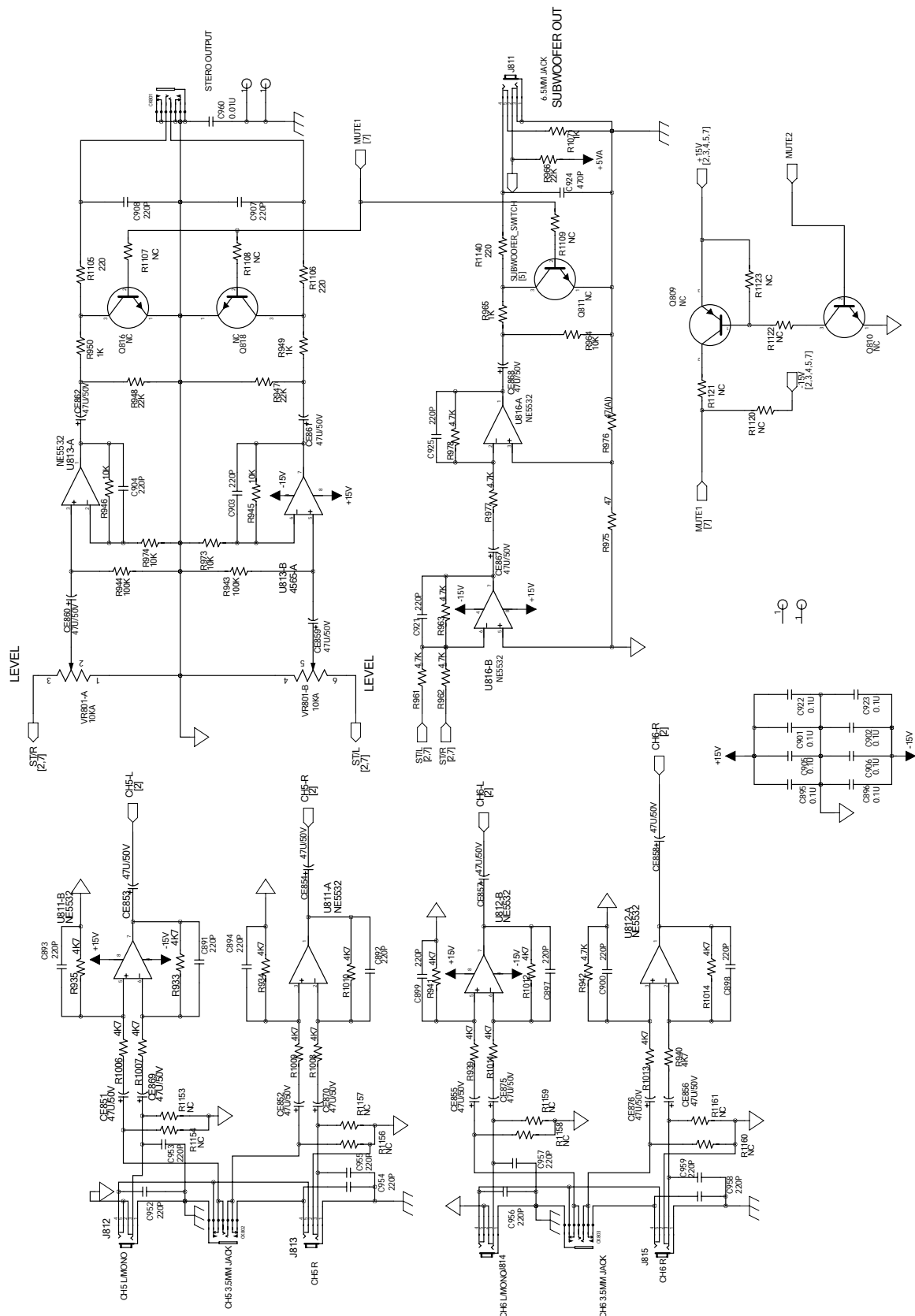
*Fender* **PASSPORT**  
 Input Schematic Diagram – 4/6



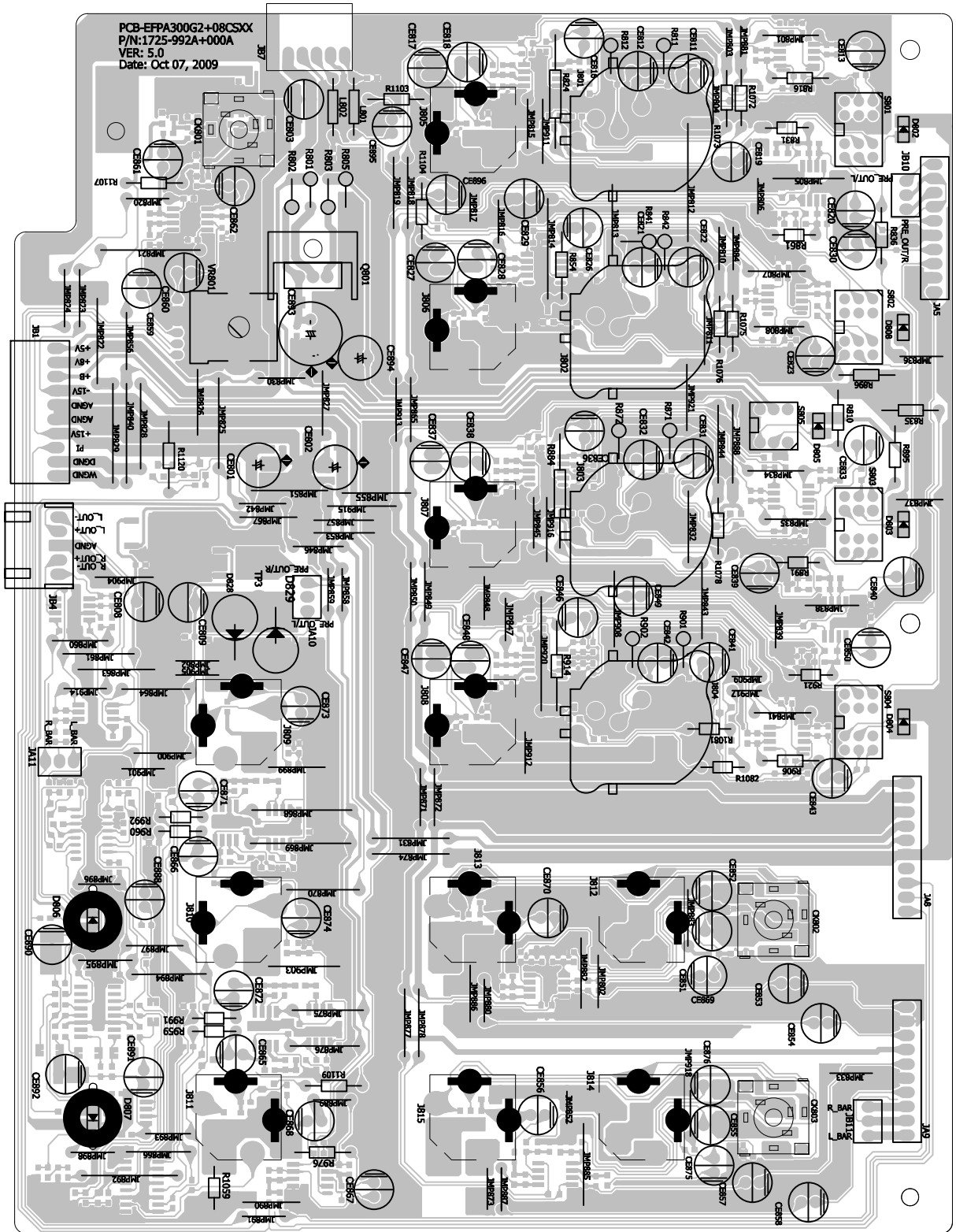


To Class D AMP Board

Fender **PASSPORT**  
Input Schematic Diagram – 5/6

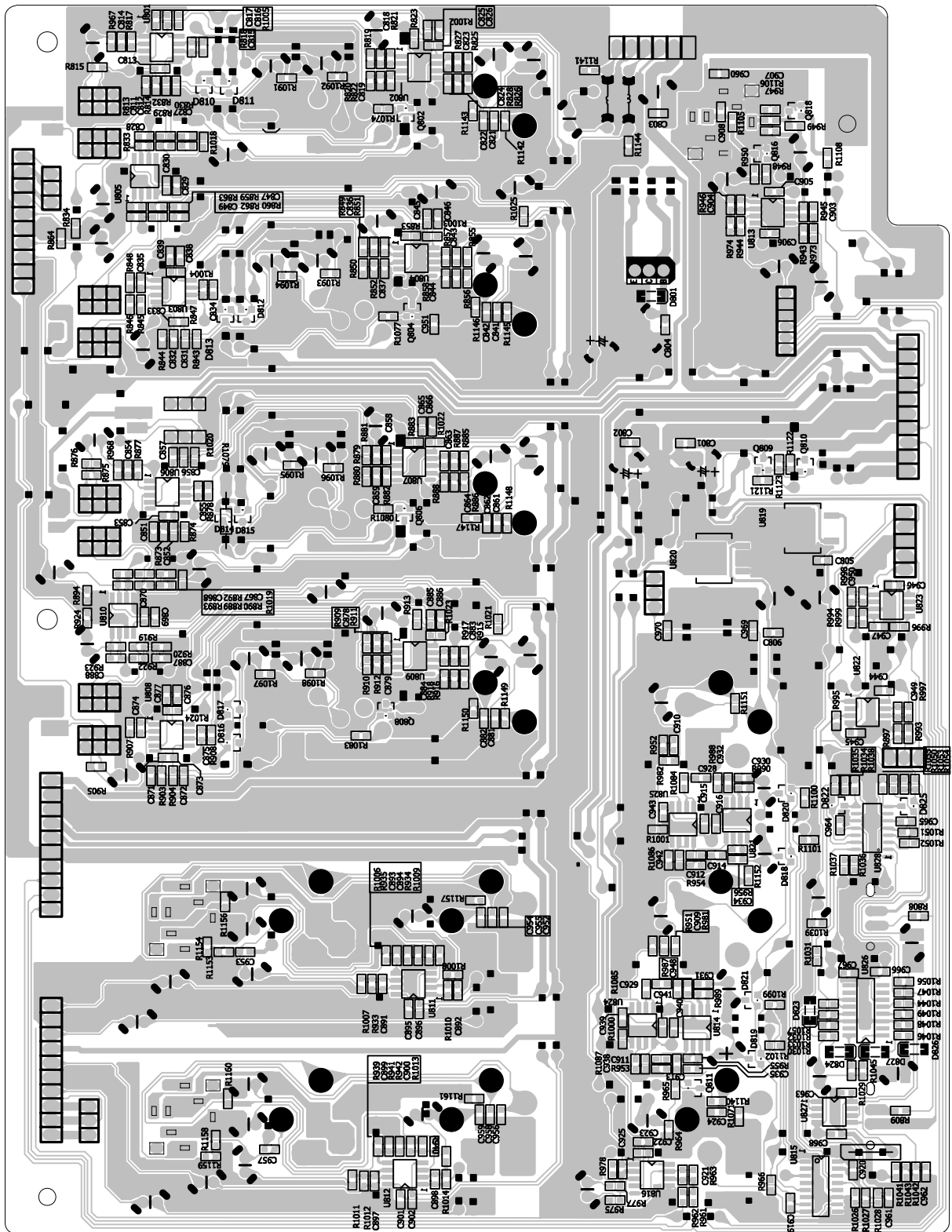


**Fender** **PASSPORT**  
Input Schematic Diagram – 6/6



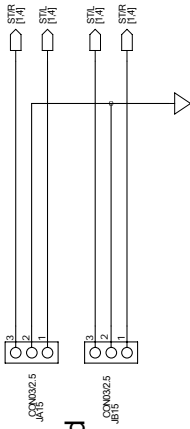
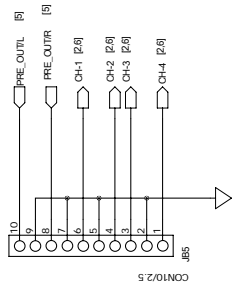
Input PCB top side

*Fender* **PASSPORT**  
Input PCB

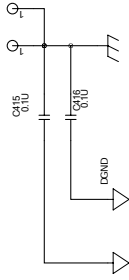
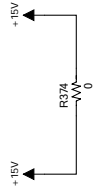


Input PCB bottom side

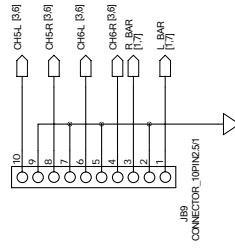
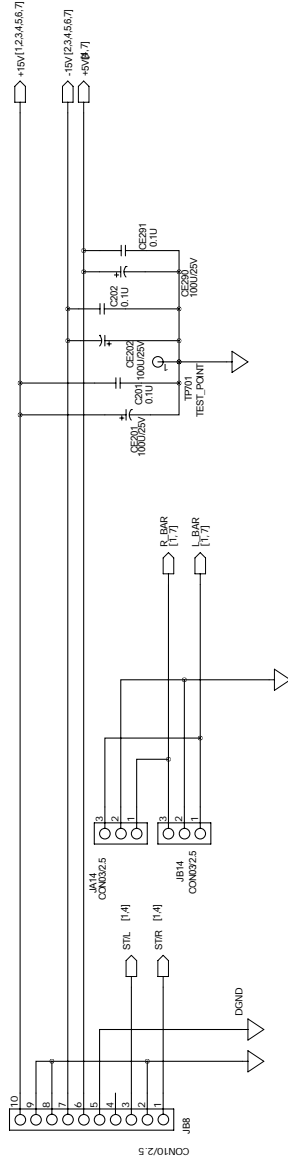
*Fender* **PASSPORT**  
Input PCB

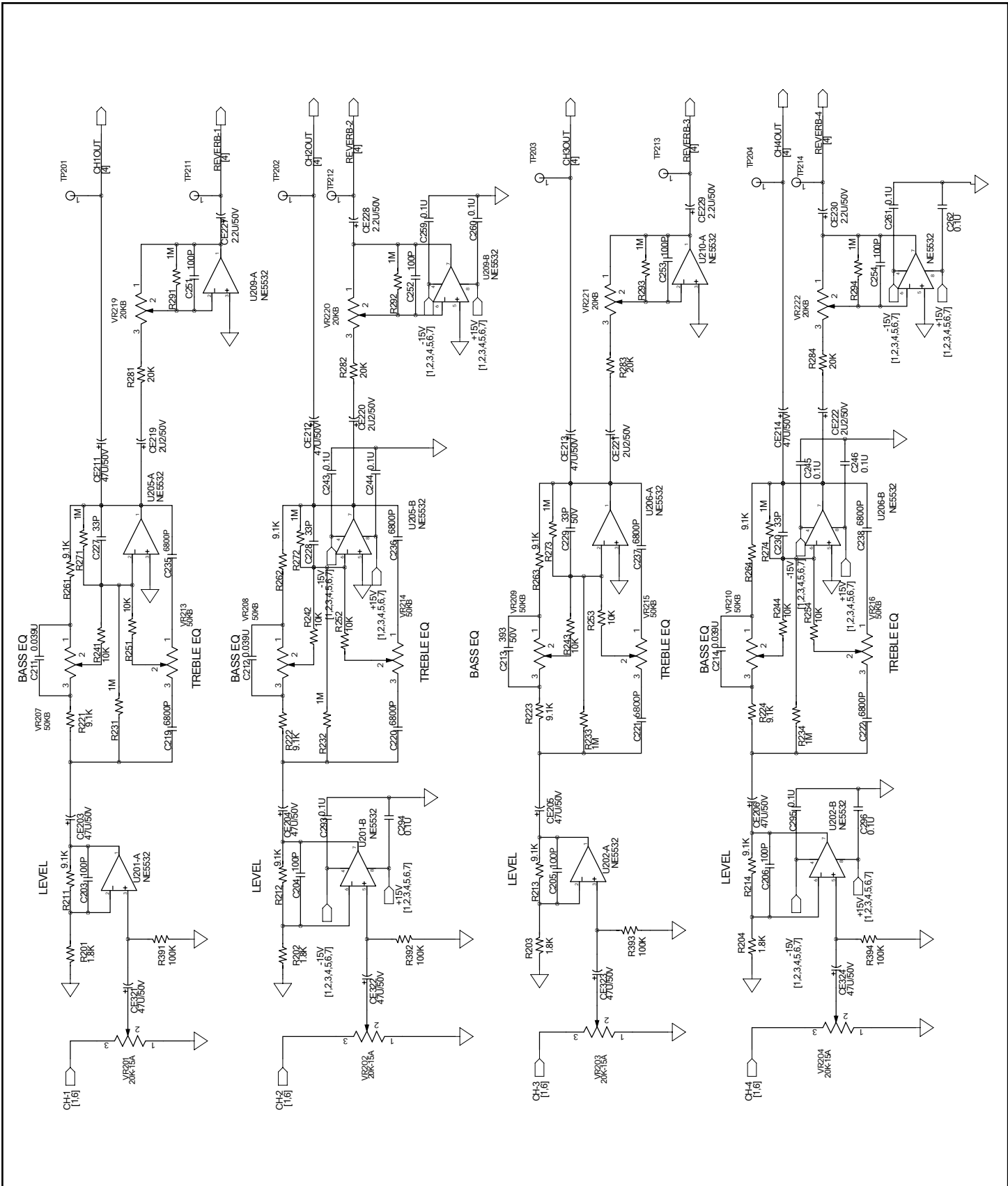


Connect to Preamp Board

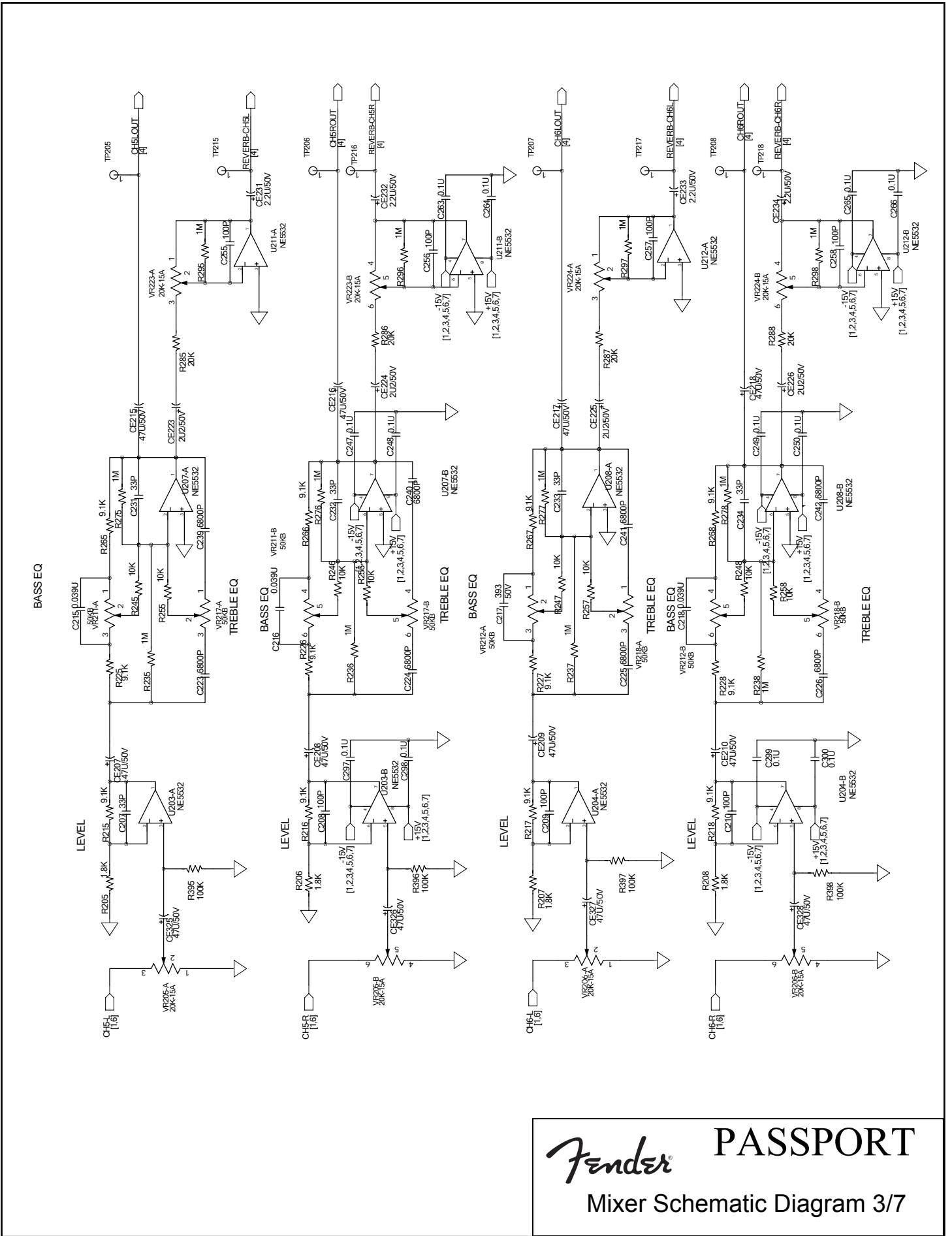


Connect to Preamp Board

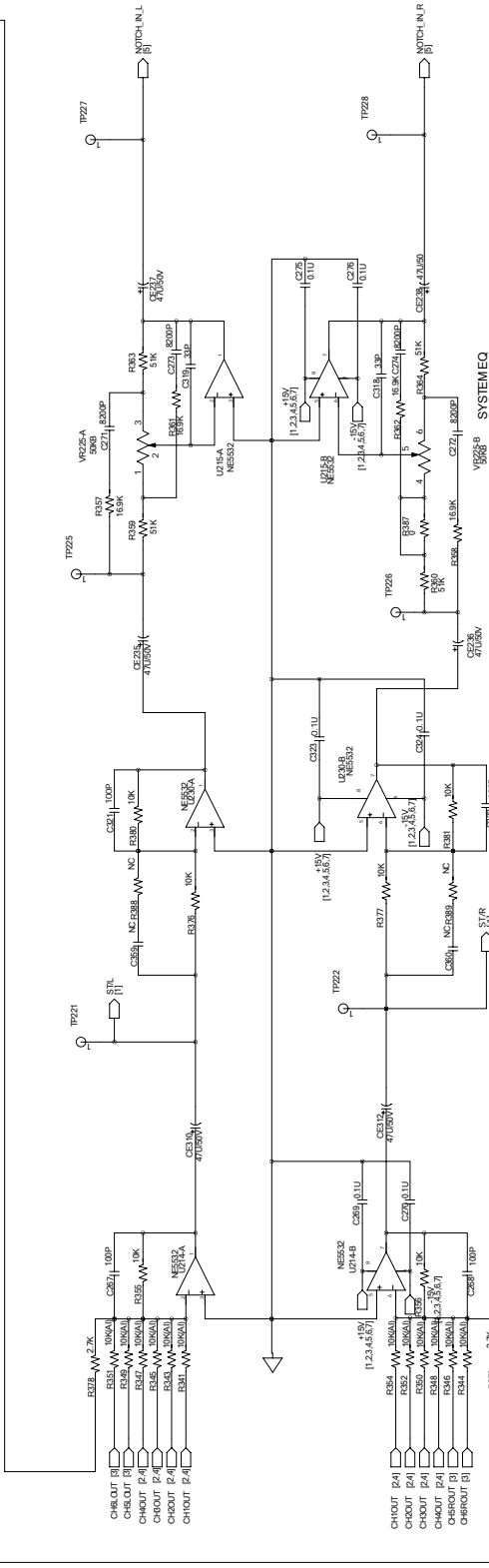
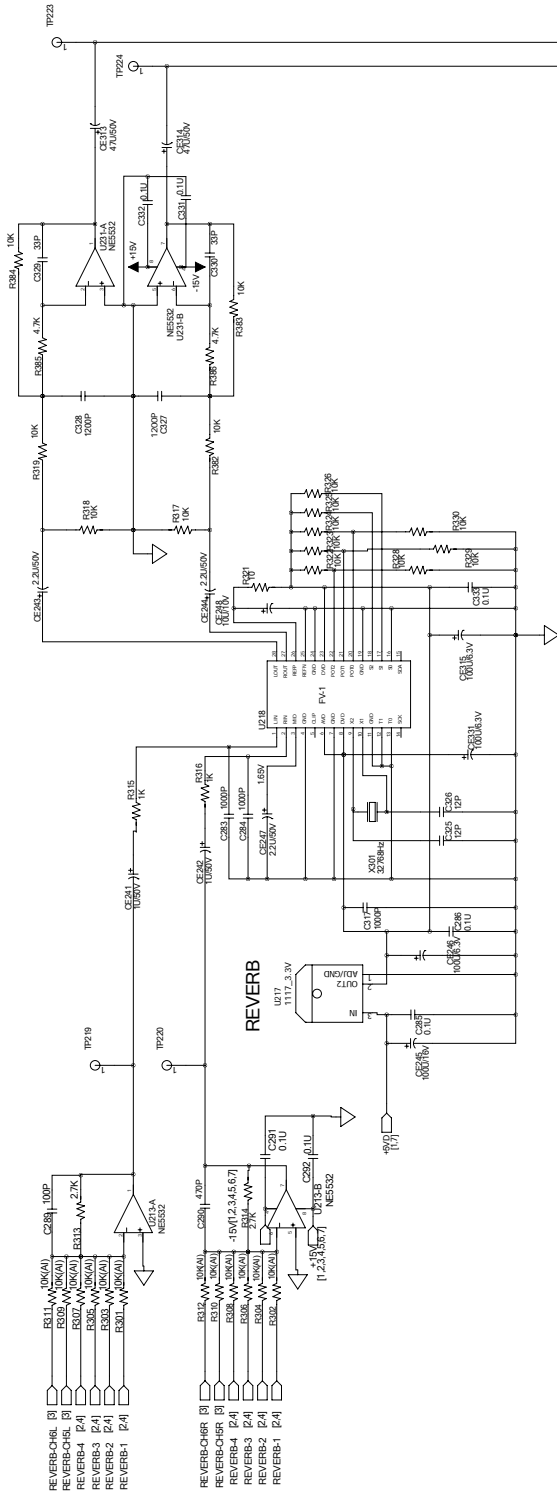




**Fender** **PASSPORT**  
Mixer Schematic Diagram 2/7

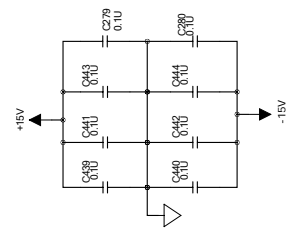
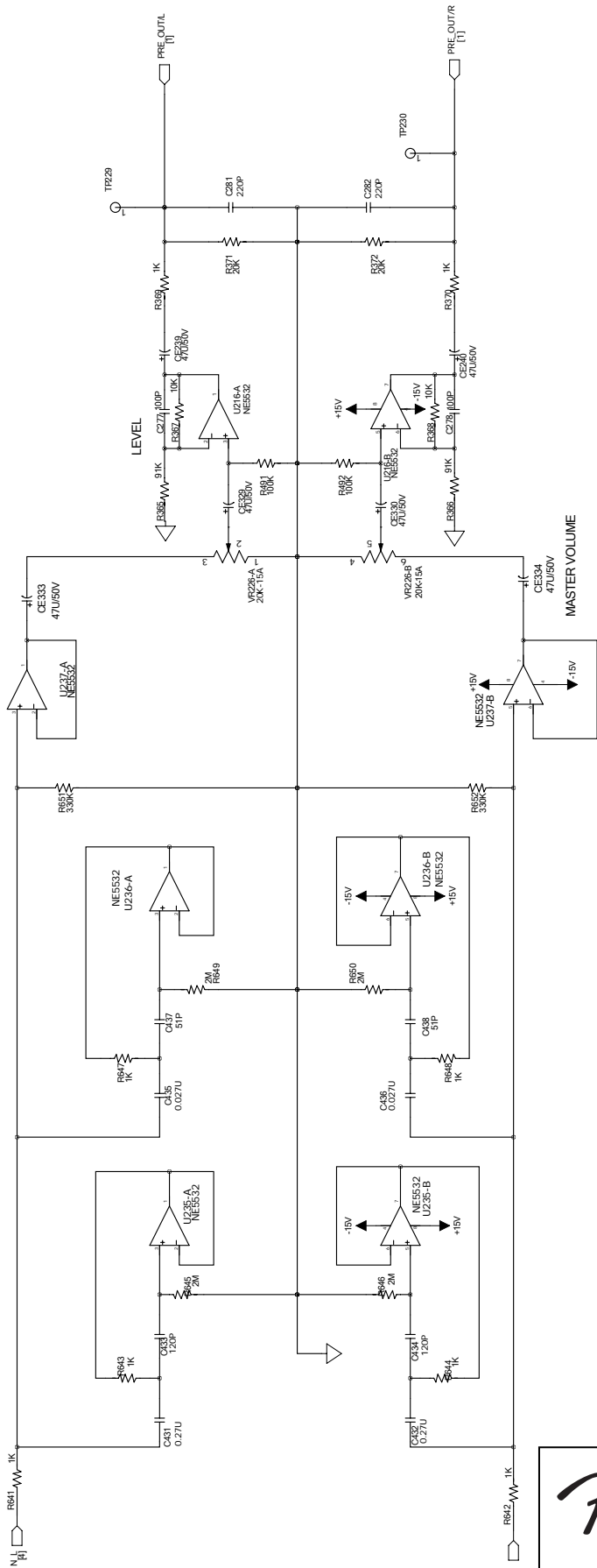


**Fender** PASSPORT  
Mixer Schematic Diagram 3/7

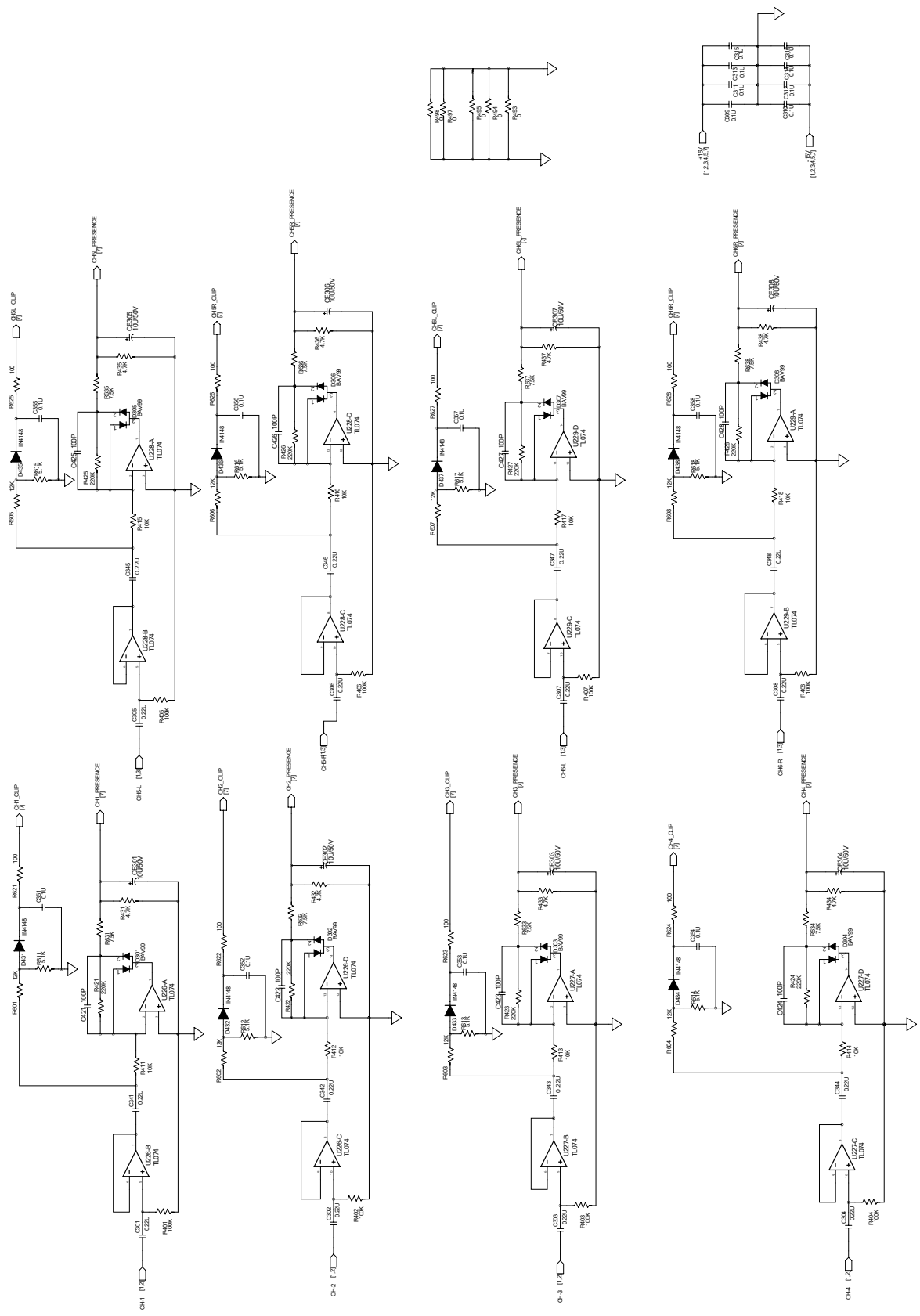


*Fender* **PASSPORT**  
Mixer Schematic Diagram 4/7

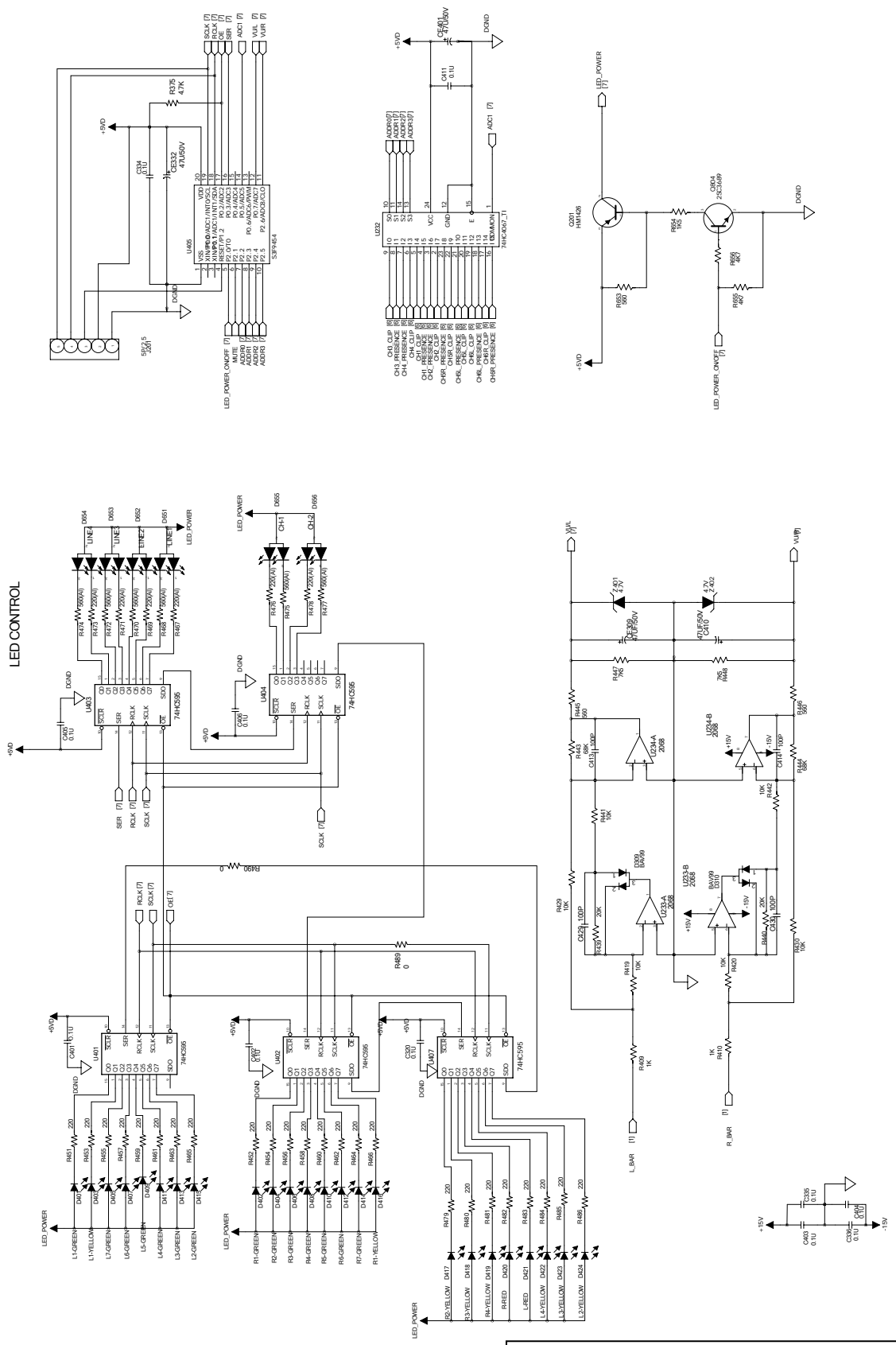




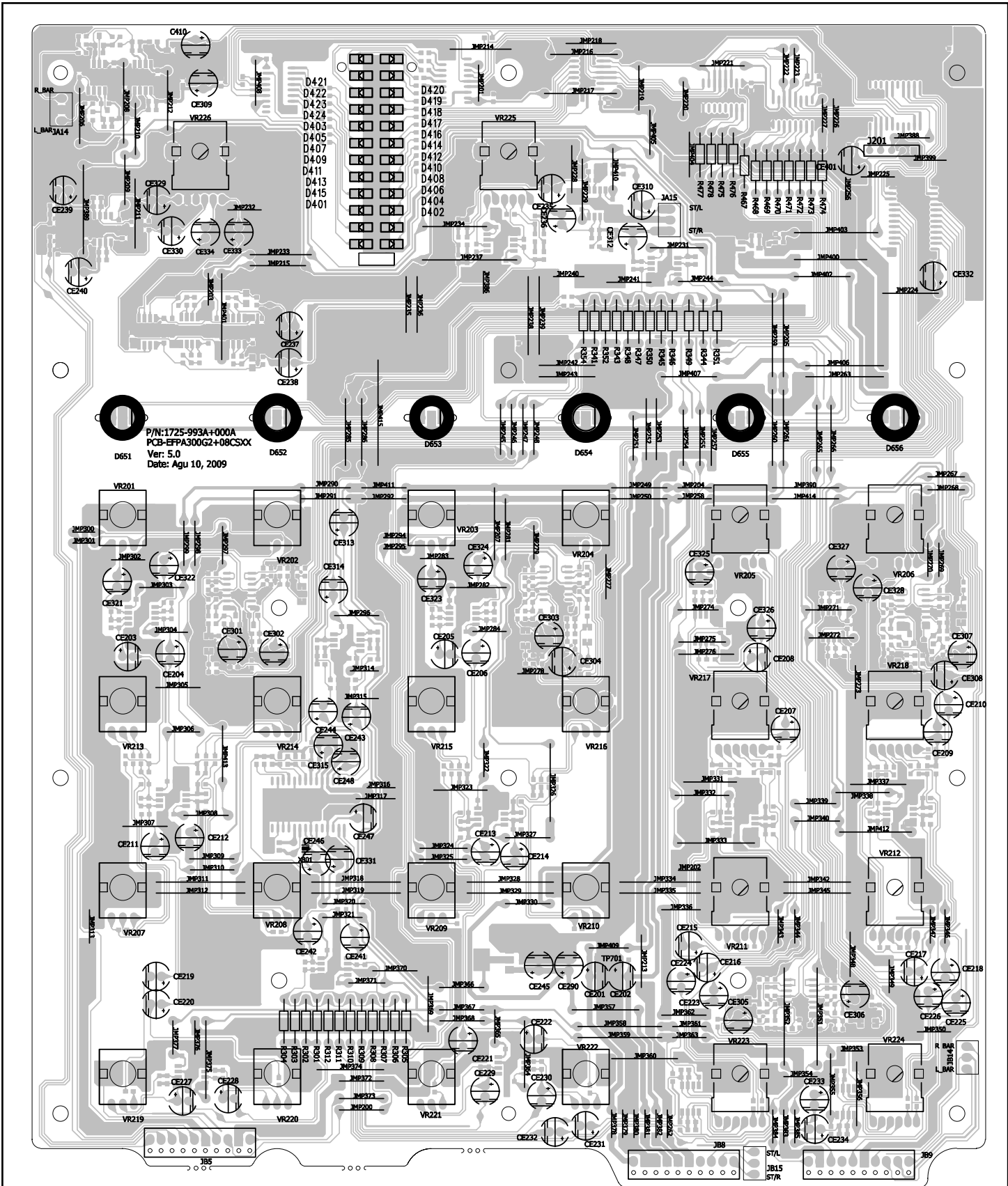
**Fender** PASSPORT  
Mixer Schematic Diagram 5/7



**Fender** **PASSPORT**  
Mixer Schematic Diagram 6/7

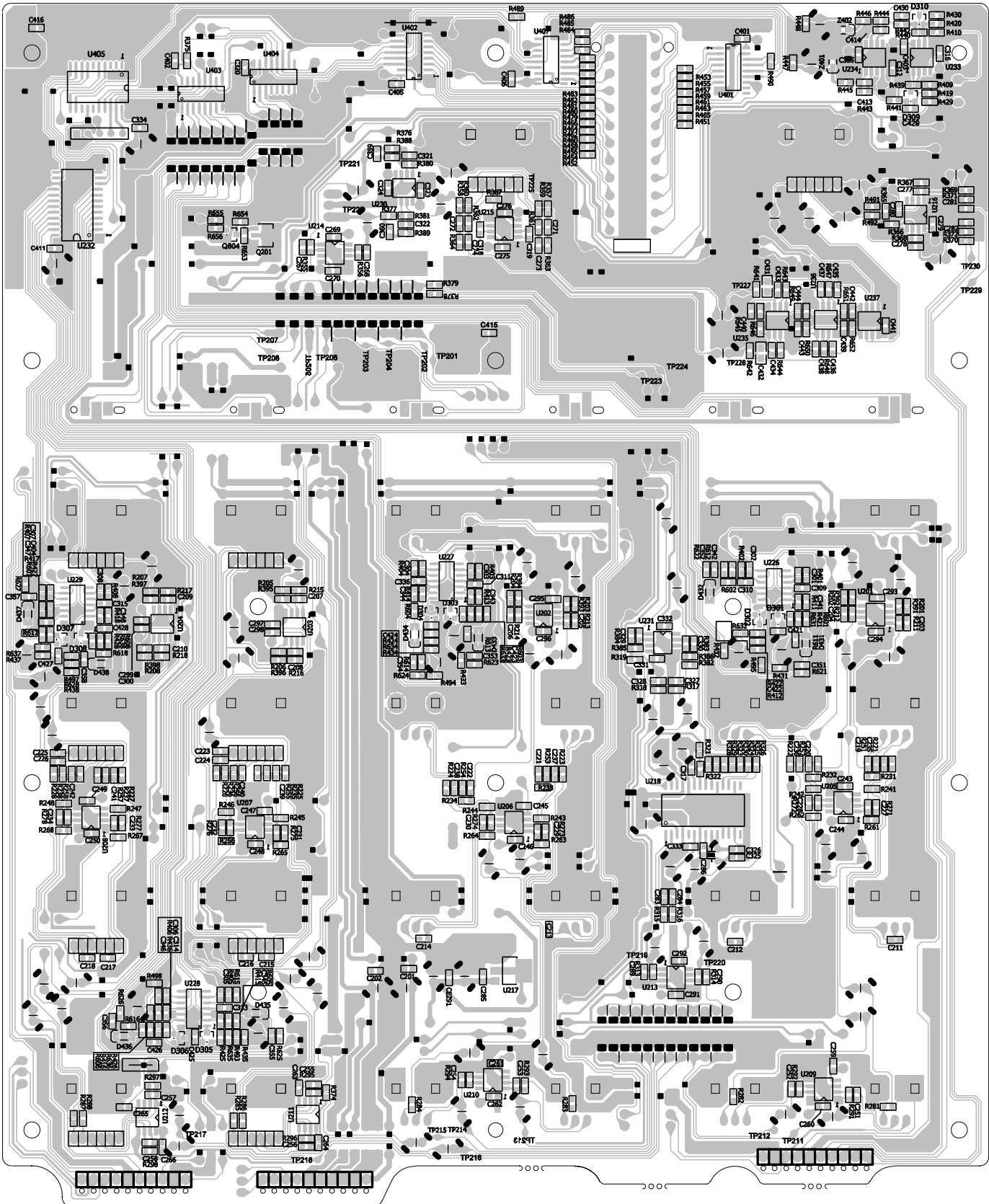


**PASSPORT**  
 Mixer Schematic Diagram 7/7



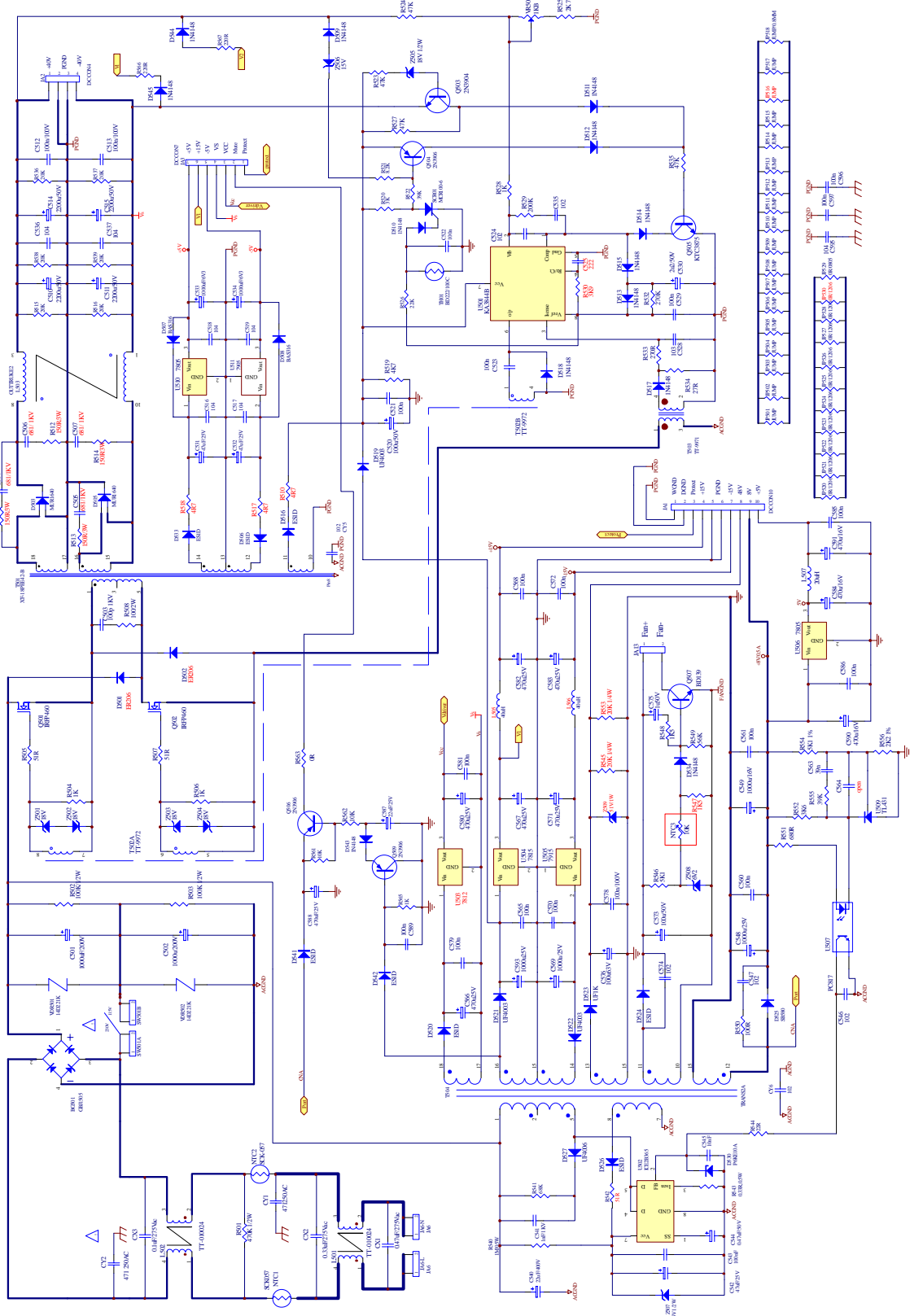
Mixer PCB top side

*Fender* **PASSPORT**  
Mixer PCB

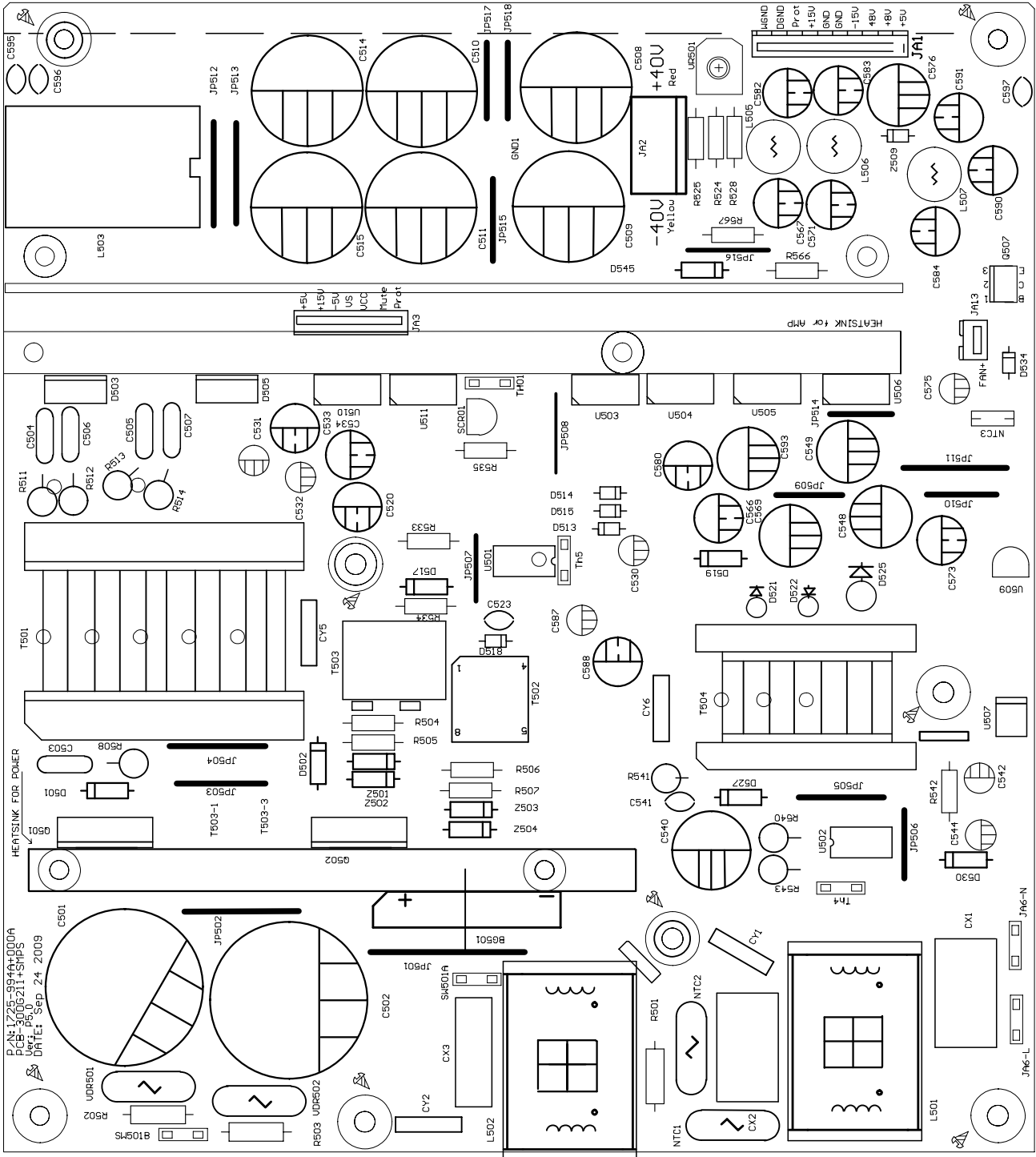


Mixer PCB bottom side

*Fender* **PASSPORT**  
Mixer PCB

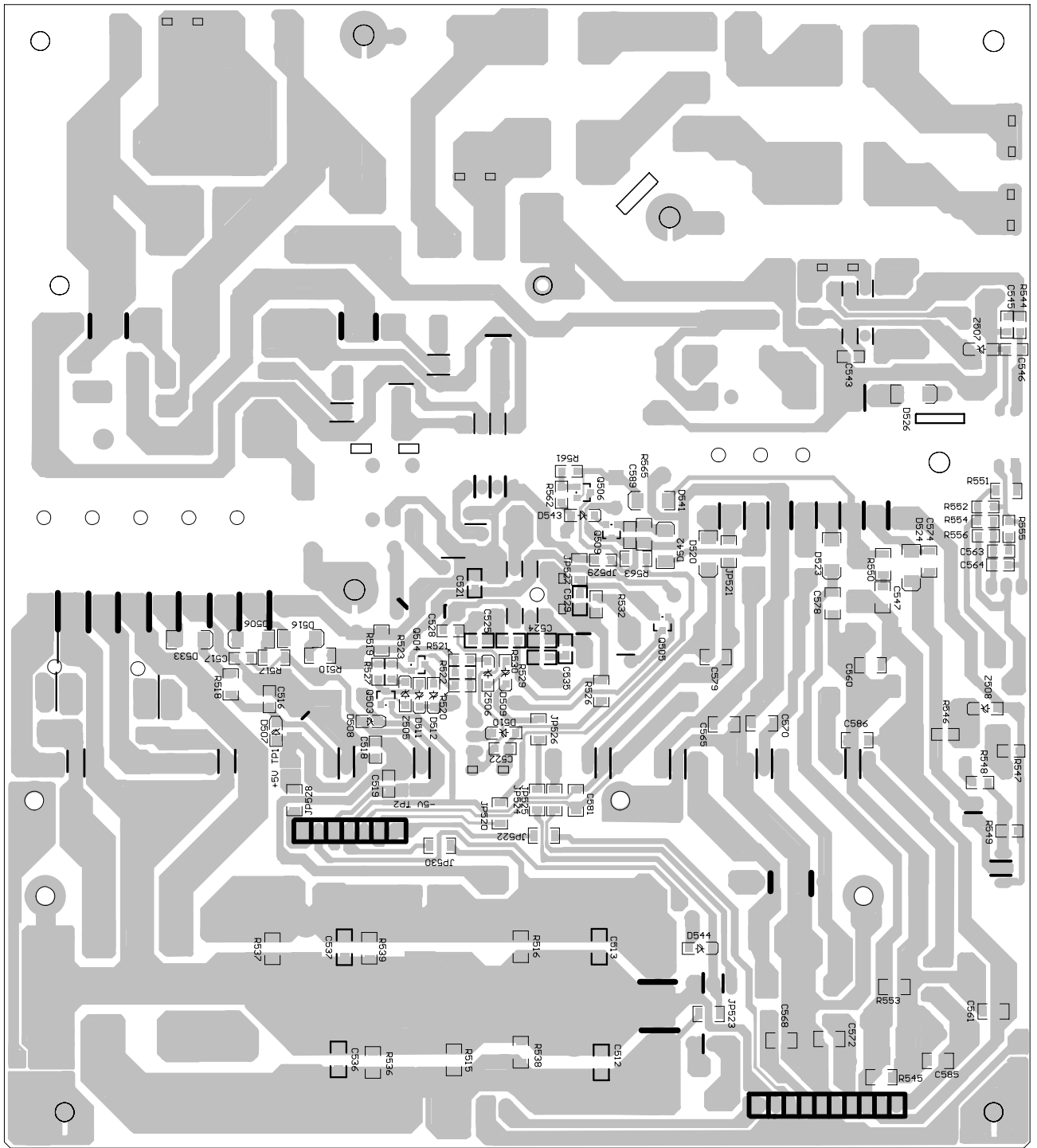


**Fender** PASSPORT  
SMPS Schematic Diagram



SMPS PCB top side

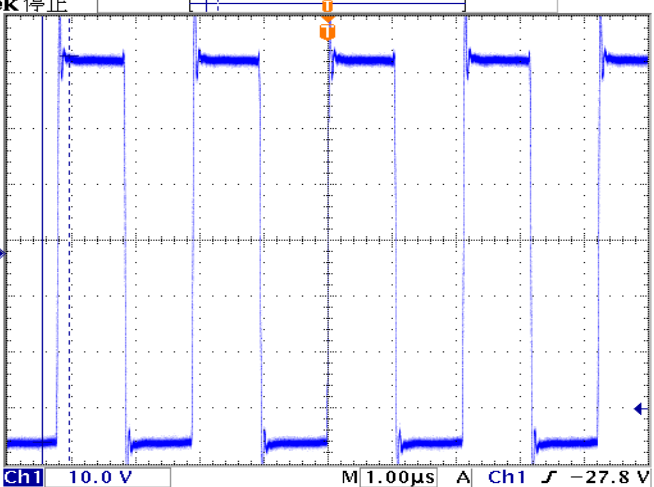
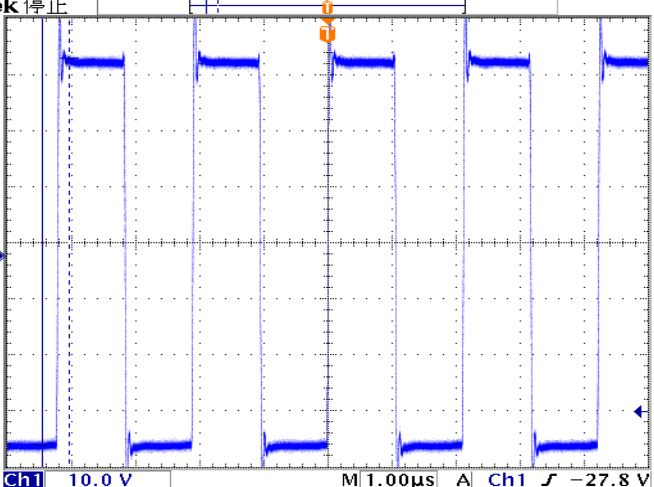

**PASSPORT**  
 SMPS PCB



SMPS PCB bottom side

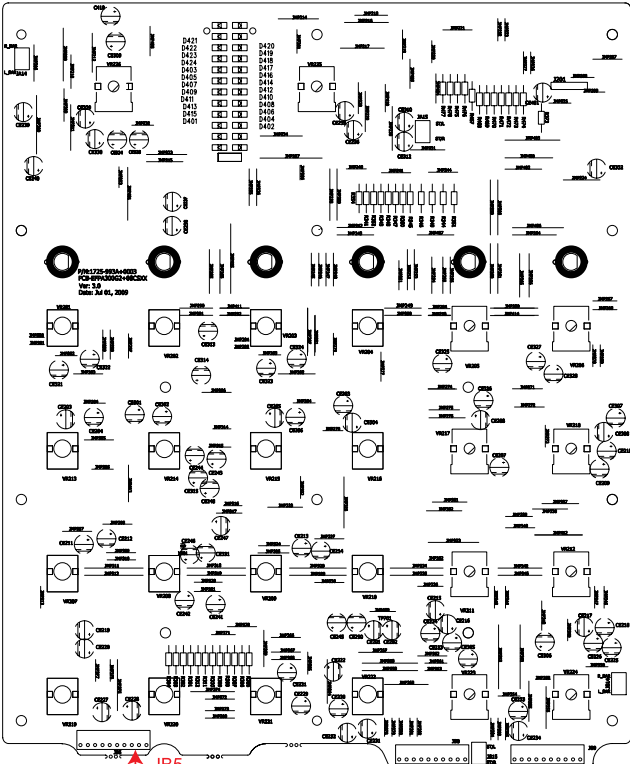
*Fender* **PASSPORT**  
SMPS PCB



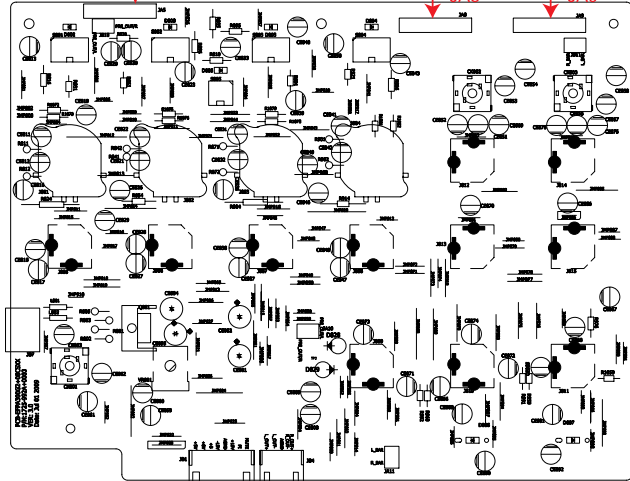
TP701	<p>PWM waveform: Tek 停止</p>  <p> <math>\Delta</math>: 69.2 V  <math>@</math>: -33.8 V  <math>\Delta</math>: 420ns  <math>@</math>: -4.46µs    Ch1 + 占空比  49.89 %    Ch1 频率  473.4kHz    Ch1 平均  269mV </p> <p>Ch1 10.0 V M 1.00µs A Ch1 -27.8 V</p> <p>0.00000 s</p> <p>27 8月 2008 13:46:36</p>
TP702	<p>PWM waveform: Tek 停止</p>  <p> <math>\Delta</math>: 69.2 V  <math>@</math>: -33.8 V  <math>\Delta</math>: 420ns  <math>@</math>: -4.46µs    Ch1 + 占空比  49.89 %    Ch1 频率  473.4kHz    Ch1 平均  269mV </p> <p>Ch1 10.0 V M 1.00µs A Ch1 -27.8 V</p> <p>0.00000 s</p> <p>27 8月 2008 13:46:36</p>
TP703	DC 40V
TP704	DC -40V

*Fender* PASSPORT  
Test Point Information

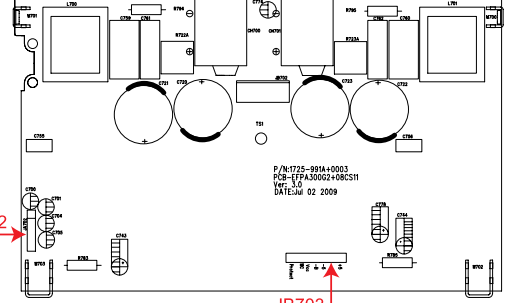
Mixer Board



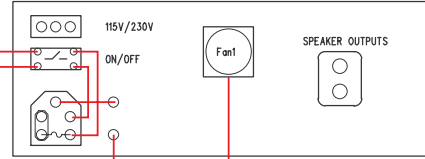
Input Board



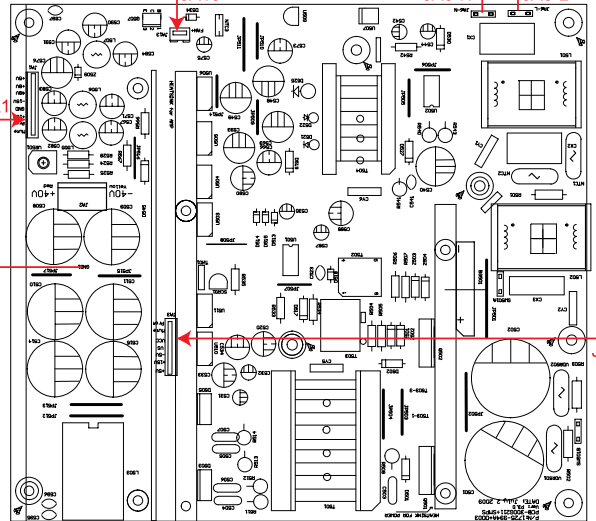
AMP Board



SMPS Box



SMPS Board



*Fender* **PASSPORT**  
Wiring Diagram

The following shows the legend of the mating connections


SVC-300G211+INP			SVC-300G211+MIX		
JA5	1	CH-4	CH-4	1	JB5
	2	AGND	AGND	2	
	3	CH-3	CH-3	3	
	4	CH-2	CH-2	4	
	5	AGND	AGND	5	
	6	CH-1	CH-1	6	
	7	AGND	AGND	7	
	8	PRE_OUT/R	PRE_OUT/R	8	
	9	AGND	AGND	9	
	10	PRE_OUT/L	PRE_OUT/L	10	
SVC-300G211+INP			SVC-300G211+MIX		
JA8	1	ST/R	ST/R	1	JB8
	2	AGND	AGND	2	
	3	ST/L	ST/L	3	
	4	MUTE	MUTE	4	
	5	AGND	AGND	5	
	6	+5VD	+5VD	6	
	7	-15V	-15V	7	
	8	AGND	AGND	8	
	9	AGND	AGND	9	
	10	+15V	+15V	10	
SVC-300G211+INP			SVC-300G211+MIX		
JA9	1	L_BAR	L_BAR	1	JB9
	2	AGND	AGND	2	
	3	R_BAR	R_BAR	3	
	4	CH6-R	CH6-R	4	
	5	AGND	AGND	5	
	6	CH6-L	CH6-L	6	
	7	AGND	AGND	7	
	8	CH5-R	CH5-R	8	
	9	AGND	AGND	9	
	10	CH5-L	CH5-L	10	



PASSPORT

Wiring Diagram

SVC-300G211+INP			SVC-300G211+SMPS		
JB1	1	+5VD	+5V	8	JA1
	2	+8V	+8V	7	
	3	+B	+48V	6	
	4	.15V	-15V	5	
	5	AGND	PGND	4	
	6	+15V	+15V	3	
	7	PI	Protect	2	
	8	MUTE	Mute	1	
SVC-300G211+INP			SVC-300G211+AMP		
JB4	1	L_OUT+	L_OUT+	5	JA702
	2	L_OUT-	L_OUT-	4	
	3	AGND	AGND	3	
	4	R_OUT+	R_OUT+	2	
	5	R_OUT-	R_OUT-	1	
SVC-300G211+SMPS			SVC-300G211+AMP		
JA2	1	+40V	+40V	1	JB702
	2	PGND	PGND	2	
	3	PGND	PGND	3	
	4	.40V	.40V	4	
SVC-300G211+SMPS			SVC-300G211+AMP		
JA3	1	Protect	PROTECT		JB703
	2	Mute	MUTE_C		
	3	VCC	VCC		
	4	VS	.B		
	5	.5V	.5V		
	6	+15V	+15VPOP		
	7	+5V	+5V		


**PASSPORT**  
 Wiring Diagram