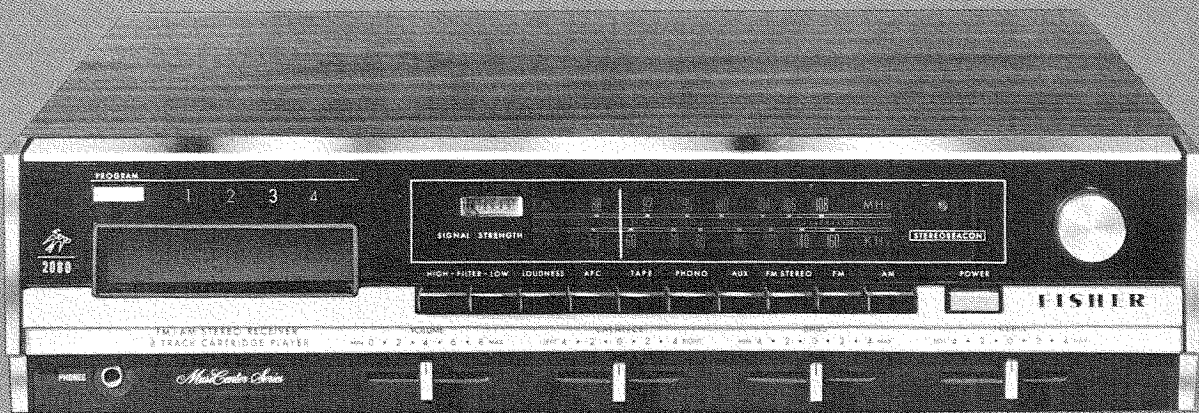


SERVICE MANUAL

The Fisher® 2080 2380



**MUSIC CENTER SERIES
Stereo Receivers**
WORLD LEADER IN HIGH QUALITY STEREO

TABLE OF CONTENTS

| | Page |
|---|------|
| Required Test Equipment | 2 |
| AM-FM-Tuner Alignment Procedure and Layout | 3 |
| Tape Player exploded View, Parts List and Alignment Procedure | 4 |
| Parts List for Chassis and all PC-Boards | 5 |
| Part of overall Schematic Diagram | 6 |
| Part of overall Schematic Diagram | 7 |

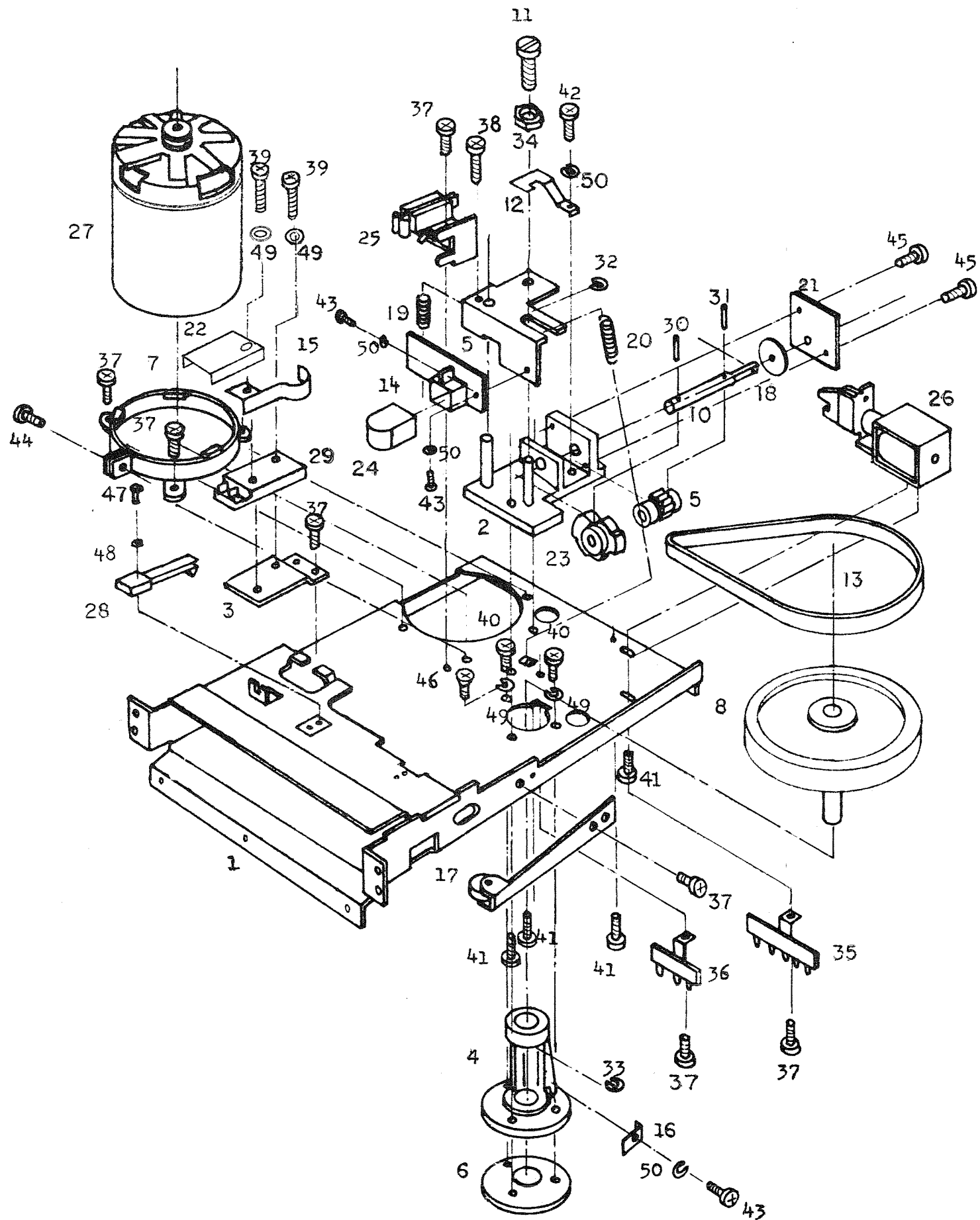
REQUIRED EQUIPMENT

The following test equipment is required to align and to service the Receiver:

- Line Voltage Autotransformer or Voltage Regulator
- AC DC Multimeter
- Accurately Calibrated AC Voltmeter
- Oscilloscope (Flat to 100kHz Minimum)
- Low-Distortion Audio Sine-Wave Generator
- Harmonic Distortion Analyzer
- Two (2) Load Resistors, 8-ohms, 50 Watts (Minimum Rating)
- Low-Distortion AM-FM Signal Generator
10.7 MHz Sweep Generator
- Multiplex Generator
- 455 kHz Sweep Generator

CAUTION: This precision high-fidelity instrument should be serviced only by qualified personnel, trained in the repair of transistorized equipment and printed circuitry.

MECHANICAL EXPLODED VIEW



MODEL 2080 & 2380

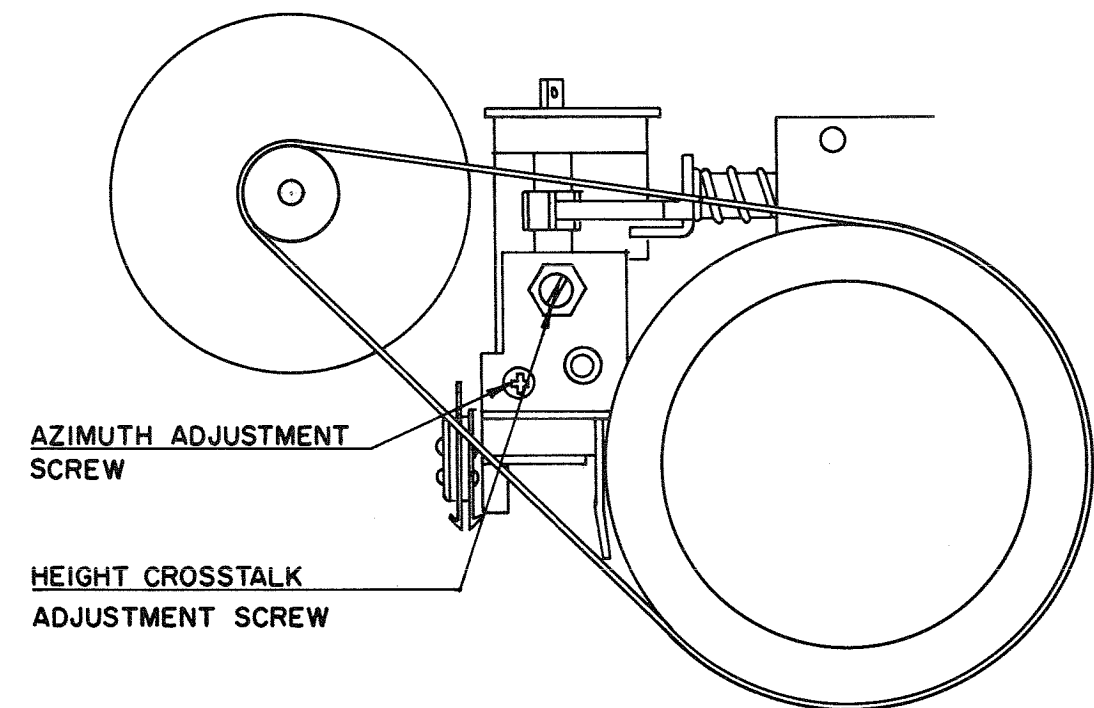
TAPE PLAYER PARTS LIST (TP4157)

| Ref. No. | Part No. | Description | Ref. No. | Part No. | Description |
|----------|-------------|--------------------------------|----------|----------|---------------------|
| 5 | 008C08 | Head Arm Assy. | 23 | 009C01 | Cam |
| 6 | 008C09 | Holder; Flywheel | 24 | WI-009 | Head |
| 8 | 008C11 | Flywheel Assy. | 25 | SW-024 | Tape Guide |
| 9 | 008C13 | Gear | 26 | ZU-001 | Plunger |
| 38 | 008C16 | Azimuth Screw | 27 | MF-007 | Motor (AC) |
| 12 | 008C17 | Holder, Gear Stopper | 28 | ST-006 | Leaf Switch |
| 13 | 008C18 | Belt | 29 | SN-001 | Micro Switch |
| 14 | 008C19 | Head Plate Assy. | 30 | 1.6 x 10 | Spring Pin |
| 15 | 008C21 | Actuator | 31 | 1.6 x 8 | Spring Pin |
| 16 | 008C22 | Tape Plate | 32 | 2 m/m | E Ring |
| 17 | 008C20 | Spring Assy. | 33 | 4 m/m | E Ring |
| 18 | 008C24 | Switch | 34 | ALN-4 | Adjustable Lock Nut |
| 19 | 008C25 | Azimuth Spring | | | |
| 20 | 008C26 | Head Spring | | | |
| 48 | 2 Ø | *Spring Washer | | | |
| 49 | 3 Ø | *Spring Washer | | | |
| 50 | 2.6 Ø | *Spring Washer | | | |
| | 2.3 Ø | *Spring Washer | | | |
| CR-1 | SD-1 | Diode | | | |
| C4 | CK-403 | Titanium Capacitor 0.04uf | | | |
| C1 | CP-0.8/250K | Metalized paper cap 0.8uf 250V | | | |

*Not Available

TAPE DECK AZIMUTH AND HEAD HEIGHT ALIGNMENT

1. Preset Bass, Treble and Balance controls to their mechanical center position, Volume Control to minimum.
2. Push in the TAPE button.
3. Connect Oscilloscope or AC VTVM to the Recorder Out Jack marked L.
4. Insert prerecorded test tape, (RCA No. 378 or equivalent), into tape player.
5. Select Tape Program Number 2.
6. Adjust Head Height Crosstalk Adjustment screw for minimum output as indicated on VTVM or Oscilloscope.
7. Connect Oscilloscope or AC VTVM to the Recorder Out Jack marked R.
8. Adjust Azimuth Adjustment Screw for maximum output as indicated on VTVM or Oscilloscope.
9. Repeat Head Height and Azimuth adjustment procedures until no further improvement is obtained.



FM-TUNER ALIGNMENT

SELECTOR to FM, AFC to OFF, VOLUME MINIMUM

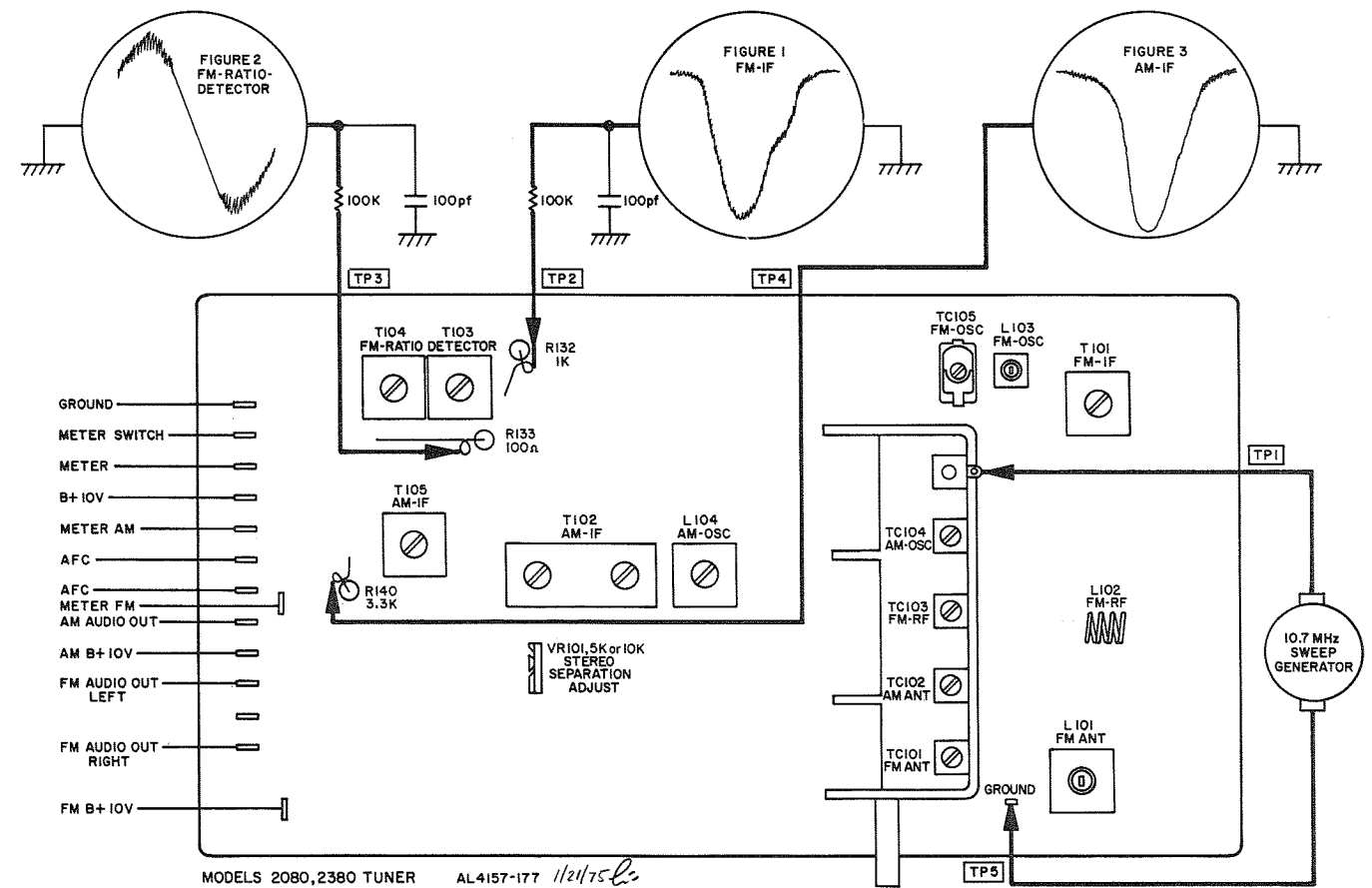
Maintain generator output as low as possible for suitable indication.

| ITEM | GENERATOR | DIAL SETTING | INDICATOR | PROCEDURE |
|---|---|---|--|--|
| <p>Note: The FM IF circuit utilizes a non-tunable ceramic filter which establishes the IF bandpass. To insure symmetrical tuning and selectivity, the IF must be aligned precisely to the center of the filter bandpass, rather than to 10.7 MHz as in conventional LC circuits.</p> | | | | |
| 1. IF ALIGNMENT | Connect 10.7 MHz sweep generator to TP1. Connect ground lead to TP5. Markers are not required. | Position of non-interference. | Scope vertical input TP2 through 100K resistor and 100pF capacitor as shown. Connect ground lead to chassis. | Adjust T101 for maximum gain. See FIGURE 1 |
| 2. PRELIMINARY DETECTOR ALIGNMENT | As above | As above | Scope vertical input to TP3 through a 100K resistor and 100pF capacitor as shown. | Adjust T103, T104 for maximum gain and symmetry. See FIGURE 2 |
| <p>Note: 120-ohm composition resistors in series with each lead from the RF generator match the 50-ohm output to the 300-ohm input impedance. Generator output voltage is reduced to one-half at antenna terminals. Signal voltages specified in this table are generator output levels, not antenna voltages.</p> | | | | |
| 3. FRONT END ALIGNMENT | Open Line Ant. Link. | Tuning knob fully CCW. | | Center dial pointer on 0 and cement it in place. |
| 4. | Connect FM RF generator through two 120-ohm resistors to FM ANT screw terminals. Set generator to 90 MHz, modulate with 400 Hz to provide ± 75 deviation. Set generator output attenuator as low as possible. | Center of 90 MHz calibration mark on dial. | Scope vertical input and AC-VTVM to Recorder Output. | Adjust L103 for maximum. Adjust L102 then L101 for maximum gain. Repeat the two steps above as required. |
| 5. | Change generator setting to 106 MHz. | Center of 106 MHz calibration mark on dial. | As above | Adjust TC105 for maximum. Adjust TC102, then TC101 for maximum gain. Repeat the two steps above as required. |
| 6. FINAL DETECTOR ALIGNMENT | As above, except set to position of non-interference near 100 MHz. Set generator output attenuator to 2mV. | Position of non-interference near 100 MHz. | Scope vertical input and distortion meter to Recorder Output. | Adjust T104 for minimum distortion. |

SELECTOR TO FM-STEREO, AFC OFF.

| | | | | |
|----------------------|---|-----------------|---|----------------------------------|
| 7. STEREO SEPARATION | As above, (Step 6) except modulation. Modulate LEFT Channel ± 67.5 kHz - 400Hz audio and ± 7.5 kHz - 19kHz pilot carrier. | As above Step 6 | Scope and AC-VTVM to Right Recorder output. | Adjust VR101 for minimum output. |
|----------------------|---|-----------------|---|----------------------------------|

AM-FM-TUNER LAYOUT



AM-TUNER ALIGNMENT

SELECTOR to AM, VOLUME MINIMUM.

Maintain generator output as low as possible for suitable indication.

| ITEM | GENERATOR | DIAL SETTING | INDICATOR | PROCEDURE |
|---------------------------|---|--|---|---|
| 1. AM IF | Connect 455 kHz sweep generator to AM EXT terminals. Note: After each adjustment reduce generator output as required. | Position of non-interference. | Scope vertical input to TP4. See FIGURE 3 | Adjust T105 for maximum gain. Adjust T102 primary and secondary for maximum gain. Repeat above two steps as required. |
| 2. AM FRONT END ALIGNMENT | AM generator to EXT AM ANT and GND terminals. Set to 600 kHz. Modulate with 30%, 1kHz. | Center of 600 kHz calibration mark on dial. | Scope and VTVM to RCDR OUT jack. | Adjust L104 (OSC.) and L105 (Loop ANT) for maximum. |
| 3. AM FRONT END ALIGNMENT | Change frequency to 1400 kHz. | Center of 1400 kHz calibration mark on dial. | As above | Adjust TC 104 (OSC.) and TC 105 (ANT.) for maximum. Repeat steps 2 and 3 until optimum alignment is reached. |

INPUT AMPLIFIER PARTS LIST

| Ref. No. | Part No. | Description |
|-------------|--------------|------------------------------------|
| | PB7256BP100K | Switch PCB Assy. |
| | SPSP039 | Push Switch, Function |
| C301, C302 | CE22342-2 | Capacitor, Electrolytic 1uf 6.3V |
| Q301, Q302 | TR2SC900 | Transistor 2SC900 |
| C305, C306 | CE22342-1 | Capacitor, Electrolytic 0.47uF 25V |
| C313 | CE22342-11 | Capacitor, Electrolytic 100uF 25V |
| C303, C304 | CK22347-5 | Capacitor, Ceramic 200pF 50V |
| C309, C310 | CKCC471K | Capacitor, Ceramic 470pF 50V |
| C311, C312 | CY22335-12 | Capacitor, Mylar 0.02uF 50V |
| C316, C317, | | |
| C307, C308 | CY22335-18 | Capacitor, Mylar 0.1uF 50V |
| C314, C315 | CY22335-8 | Capacitor, Mylar .005uF 50 V |
| R317 | RF25DC222J | Resistor 1/4W 5% 2.2K |
| R313, R314 | RF25DC562J | Resistor 1/4W 5% 5.6K |
| R307, R308 | RF25DC102J | Resistor 1/4W 5% 1K |
| R303, R304 | RF25DC103J | Resistor 1/4W 5% 10K |
| R305, R306 | | |
| R320, R321 | | |
| R322, R323 | RF25DC823J | Resistor 1/4W 5% 82K |
| R315, R316 | RF25DC154J | Resistor 1/4W 5% 150K |
| R309, R310 | RF25DC274J | Resistor 1/4W 5% 270K |
| R311, R312 | RF25DC334J | Resistor 1/4W 5% 330K |
| R318, R319 | RC07BF155J | Resistor 1/4W 5% 1.5M |
| R301, R302 | RF25DC105J | Resistor 1/4W 5% 1M |

TAPE PRE-AMPLIFIER PARTS LIST

| Ref. No. | Part No. | Description |
|------------|--------------|-----------------------------------|
| | PB7212BP120K | Equalizer PCB Assy. |
| Q201, Q202 | TR2SC900 | Transistor 2SC900 |
| Q203, Q204 | TR2SC945 | Transistor 2SC945 |
| R205, R206 | RF25DC331J | Resistor 1/4W 5% 330 ohm |
| R211, R212 | RF25DC102J | Resistor 1/4W 5% 1K |
| R216, R215 | | |
| R201, R202 | RF25DC332J | Resistor 1/4W 5% 3.3K |
| R217, R218 | RF25DC682J | Resistor 1/4W 5% 68K |
| R209, R210 | RF25DC103J | Resistor 1/4W 5% 10K |
| R222, | | |
| R213, R214 | RF25DC223J | Resistor 1/4W 5% 22K |
| R221 | RF25DC473J | Resistor 1/4W 5% 47K |
| R219, R220 | RF25DC154J | Resistor 1/4W 5% 150K |
| R203, R204 | RF25DC104J | Resistor 1/4W 5% 100K |
| R207, R208 | | |
| C205, C206 | CK22345-9 | Capacitor, Ceramic 47pF 50V |
| C201, C202 | CK22347-8 | Capacitor, Ceramic 370pF 50V |
| C209, C210 | CY22335-1 | Capacitor, Mylar .01uF 50V |
| C211, C212 | CECDV0.47/10 | Capacitor, Electrolytic .47uF 10V |
| C203, C204 | CE22342-2 | Capacitor, Electrolytic 1uF 6.3V |
| C207, C208 | CECDV33/6.3 | Capacitor, Electrolytic 33uF 6.3V |
| C214 | CE22342-15 | Capacitor, Electrolytic 220uF 16V |
| C213 | CECDV33/10 | Capacitor, Electrolytic 33uF 10V |

| Ref. No. | Part No. | Description |
|--------------|--------------------------|-----------------------------------|
| | PBSBT41 | Tuner PCB Assy. |
| IC101 | TRAN217 | IC, IF |
| IC102 | TRSN76115N or TR90927 | IC, MPX |
| Q101 | TR2SK41 | Transistor 2SK41 |
| Q102, Q103 | TR2SC461 | Transistor 2SC461 |
| Q104 | TR2SC380 | Transistor 2SC380 |
| Q105 | TR2SC1647 | Transistor 2SC1647 |
| CR101 | TR1S553 | Diode (AFC) |
| CR102 | | Diode 1S188 |
| THROUGH | | |
| CR108 | | |
| CF101, CF102 | CFSFE10.7MA5 | Ceramic Filt. SFE10.7MA5 |
| VC1 | CVCS007 | Air Variable Capacitor |
| TC105 | CTCT038 | Trimmer |
| L101 | LCHA013 | FM Antenna Coil |
| L102 | LCHB049 | FM RF Coil |
| L103 | LCHC035 | FM Osc. Coil |
| L106 | LCHE008 | IF Trap Coil |
| L105 | LAAD120A | AM Antenna Coil with Ferrite Ant. |
| T101 | 221K001 | FM IFT |
| T103 | ZZ10019 | FM IFT Detector Prim. |
| T104 | ZZ10020 | FM IFT Detector Sec. |
| L104 | LCHM022 | AM Osc. Coil |
| T102 | ZZ1G003 | AM IFT |
| T105 | ZZ1C012 | AM IFT |
| L107, L108 | LCHE028S | Inductor (MPX Filter) |
| C157 | CPCMK172J | Capacitor Styrene 1700pf 50VDC |
| C159 | CA22313-1 | Mica Condenser 470pf 50VDC |
| C127 | CA22313-6 | Mica Condenser 330pf 50VDC |
| C115 | CA22313-10 | Mica Condenser 82pf 50VDC |
| C148, C149 | CK22350-6 | Capacitor, Ceramic 300pF 50VDC |
| C113, | | |
| C141, C142 | CK22345-12 | Capacitor, Ceramic 100pF 50VDC |
| C102, C104 | CK22345-7 | Capacitor, Ceramic 30pF 50VDC |
| C130 | CK22344-9 | Capacitor, Ceramic 15pF 50VDC |
| C118, C125 | CK22345-3 | Capacitor, Ceramic 10pF 50VDC |
| C143 | CK22345-9 | Capacitor, Ceramic 47pF 50VDC |
| C134 | CK22346-2 | Capacitor, Ceramic 1pF 50VDC |
| C108, C144 | CKCC200K | Capacitor, Ceramic 20pF UJ |
| C126 | CKCC200K | Capacitor, Ceramic 20pF TH |
| C109, C102 | CKCC300K | Capacitor, Ceramic 30pF UJ |
| C106 | CKCC100K | Capacitor, Ceramic 10pF UJ |
| C114, C116 | CKCC050D | Capacitor, Ceramic 5pF CH |
| C117 | CKCC020D | Capacitor, Ceramic 2pF |
| C112 | CKCC030D | Capacitor, Ceramic 3pF |
| C101, C119 | CK22354-1 | Capacitor, Ceramic 0.01uF |
| C128, C139 | | |
| C153, C152 | | |
| C103, C110 | CK22354-2 | Capacitor, Ceramic 0.02uF 50V |
| C111, C120 | | |
| C121, C122 | | |
| C123, C124 | | |
| C145, C129 | | |
| C132, C176 | | |
| C133, C138 | | |
| C154, C174 | | |
| C107, C175, | | |
| C105 | | |
| C175 | | |
| C161 | CYCMS-334M | Capacitor, Mylar .33uF |
| C166 | CY22335-20 | Capacitor, Mylar .22uF |
| C165, C156 | CY22335-22 | Capacitor, Mylar .04uF |
| C160, C162 | CY22335-12 | Capacitor, Mylar .02uF |
| C170, C171 | CY22335-8 | Capacitor, Mylar .005uF |
| C172, C173 | | |

AM-FM-TUNER PARTS LIST

| Ref. No. | Part No. | Description |
|-------------|-------------|------------------------------------|
| C146, C167 | CY22335-1 | Capacitor, Mylar .01uF 50V |
| C128 | | |
| C168, C169 | C51256-9 | Capacitor, Styrene 1000pF 125V |
| C158 | CE0256010 | Capacitor, Electrolytic 1000uF 16V |
| C131 | CE22342-15 | Capacitor, Electrolytic 220uF 16V |
| C136 | CE22342-12 | Capacitor, Electrolytic 100uF,16V |
| C137 | CECD10/10 | Capacitor, Electrolytic 10uF 10V |
| C147, C150 | CE22342-3 | Capacitor, Electrolytic 4.7uF 10V |
| C135, C140 | CE22342-2 | Capacitor, Electrolytic 1uF 10V |
| C155 | | |
| C151, C163 | CECDV0.1/10 | Capacitor, Electrolytic .1uF 10V |
| C164 | | |
| VR101 | RVRT019 | Semi-Fixed Resistor 5K |
| R143 | RF25DC155J | Resistor 1/4W 5% 1.5M |
| R102 | RF25DC105J | Resistor 1/4W 5% 1M |
| R101 | RF25DC334J | Resistor 1/4W 5% 330K |
| R149, R141, | RF25DC224J | Resistor 1/4W 5% 220K |
| R127 | | |
| R145 | RF25DC473J | Resistor 1/4W 5% 47K |
| R108 | RF25DC104J | Resistor 1/4W 5% 100K |
| R135 | RF25DC683J | Resistor 1/4W 5% 68K |
| R109 | RF25DC563J | Resistor 1/4W 5% 56K |
| R144, R128 | RF25DC223J | Resistor 1/4W 5% 22K |
| R103, R129 | | |
| R151 | RF25DC183J | Resistor 1/4W 5% 18K |
| R131 | RF25DC153J | Resistor 1/4W 5% 15K |
| R156, R157 | RF25DC103J | Resistor 1/4W 5% 10K |
| R110, R120 | | |
| R137, R138 | | |
| R139, R147 | | |
| R116 | RF25DC682J | Resistor 1/4W 5% 6.8K |
| R114, R152 | RF25DC472J | Resistor 1/4W 5% 4.7K |
| R153 | | |
| R146 | RF25DC474J | Resistor 1/4W 5% 470K |
| R130 | RF25DC680J | Resistor 1/4W 5% 68 |
| R113 | RF25DC330J | Resistor 1/4W 5% 33 |
| R124 | RF25DC220J | Resistor 1/4W 5% 22 |
| R158 | RF25DC821J | Resistor 1/4W 5% 820 |
| R111 | RF25DC392J | Resistor 1/4W 5% 3.9K |
| R148, R118 | RF25DC332J | Resistor 1/4W 5% 3.3K |
| R140, R125 | | |
| R105, R106 | RF25DC222J | Resistor 1/4W 5% 2.2K |
| R112, R125 | | |
| R140, R154 | | |
| R155 | | |
| R104, R107 | RF25DC102J | Resistor 1/4W 5% 10K |
| R122, | | |
| R121, R126 | | |
| R132, R134 | | |
| R136, R150 | | |
| R123 | RF25DC271J | Resistor 1/4W 5% 270 |
| R133, R117 | RF25DC101J | Resistor 1/4W 5% 100 |
| R115, R119 | | |
| R142 | RF25DC393J | Resistor 1/4W 5% 39K |

POWER SUPPLY PARTS LIST

| Ref. No. | Part No. | Description |
|--------------|--------------|------------------------------------|
| | PB7256BP400K | Power Supply PCB Assy. |
| CR601, CR602 | BRFS-3 | Rectifier FS-3 |
| CR603 | BR1N4003 | Rectifier 1N4003 |
| CR604 | TRBZ100 | Zener Diode, 10V |
| C603 | CK22354-1 | Capacitor, Ceramic 0.01uF 50V |
| C601, C602 | CKCK103 | Capacitor, Ceramic 0.01uF 500V |
| R603 | RFRD1-56 | Resistor 1W 56 ohm |
| R602 | RC30BF221J | Resistor 1W 220 ohm |
| R604 | RW5W330J | Cement Type Resistor 33 ohm 5W |
| C606 | CECDV2200/16 | Capacitor, Electrolytic 2200uF 16V |
| C607 | CECDV1000/35 | Capacitor, Electrolytic 1000uF 35V |
| C605 | CECD2200/35 | Capacitor, Electrolytic 2200uF 35V |
| C604 | CECDV2200/25 | Capacitor, Electrolytic 2200uF 25V |
| R601 | RF25DC102J | Resistor 1/4W 5% 1K |
| C608 | CECDV1000/35 | Capacitor, Electrolytic 1000uF 35V |

POWER AMPLIFIER PARTS LIST

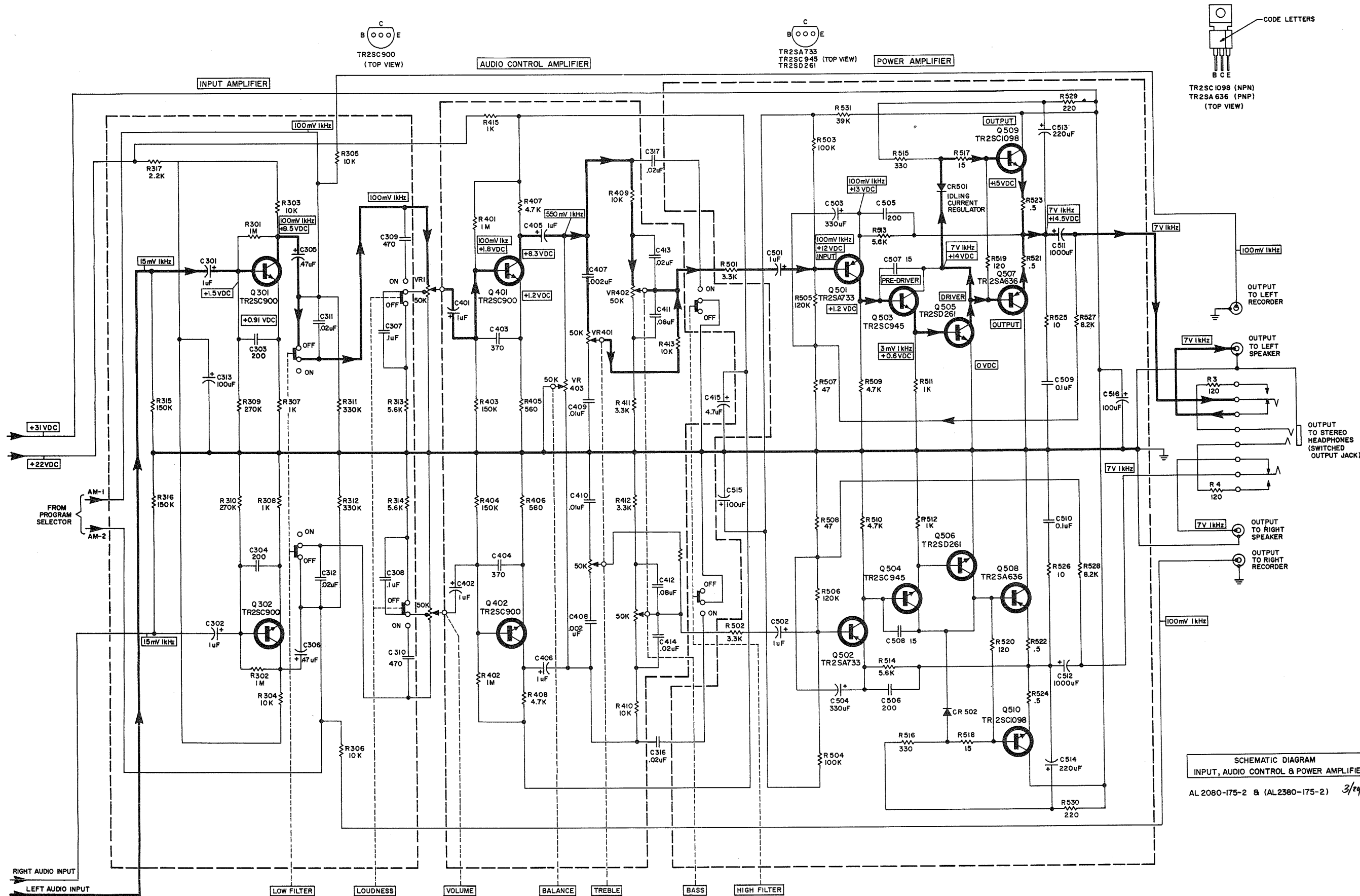
| Ref. No. | Part No. | Description |
|--------------|--------------|------------------------------------|
| | PB7256BP300K | Power Amplifier PCB Assy. |
| Q507, Q508 | TR2SA636 | Transistor 2SA636 (PNP) |
| Q509, Q510 | TR2SC1098 | Transistor 2SC1098 (NPN) |
| Q503, Q504 | TR2SC945 | Transistor 2SC945 (NPN) |
| Q505, Q506 | TR2SD261 | Transistor 2SD261 (NPN) |
| Q501, Q502 | TR2SA733 | Transistor 2SA733 (PNP) |
| CR501, CR502 | RVVD1220 | Varistor VD1220 |
| C501, C502 | CE22342-2 | Capacitor, Electrolytic 1uF 25V |
| C503, C504 | CECDV330/16 | Capacitor, Electrolytic 330uF 16V |
| C515 | CE22342-11 | Capacitor, Electrolytic 100uF 25V |
| C513, C514 | CE22342-14 | Capacitor, Electrolytic 220uF 25V |
| C511, C512 | CE22342-23 | Capacitor, Electrolytic 1000uF 25V |
| C516 | CE22342-10 | Capacitor, Electrolytic 100uF 35V |
| C507, C508 | CK22344-9 | Capacitor, Ceramic 15pF 50V |
| C505, C506 | CK22347-5 | Capacitor, Ceramic 200pF 50V |
| C509, C510 | CY22335-18 | Capacitor, Mylar 0.1uF 50V |
| R515, R516 | RC30BF331K | Resistor 1W 330 ohm |
| R529, R530 | RC30BF221J | Resistor 1W 220 ohm |
| R525, R526 | RC20BF100J | Resistor 1/2W 10 ohm |
| R521, R522 | RRD3-0.5 | Resistor Cement Type .5 ohm 3W |
| R523, R524 | | |
| R507, R508 | RF25DC470J | Resistor 1/4W 5% 47 ohm |
| R511, R512 | RF25DC102J | Resistor 1/4W 5% 1K |
| R509, R510 | RF25DC472J | Resistor 1/4W 5% 4.7K |
| R513, R514 | RF25DC562J | Resistor 1/4W 5% 5.6K |
| R527, R528 | RF25DC822J | Resistor 1/4W 5% 8.2K |
| R531 | RF25DC393J | Resistor 1/4W 5% 39K |
| R503, R504 | RF25DC104J | Resistor 1/4W 5% 100K |
| R505, R506 | RF25DC124J | Resistor 1/4W 5% 120K |
| R501, R502 | RF25DC332J | Resistor 1/4W 5% 3.3K |
| R517, R518 | RF25DC150J | Resistor 1/4W 5% 15 ohm |
| R519, R520 | RF25DC121J | Resistor 1/4W 5% 120 ohm |

CHASSIS PARTS LIST

| Ref. No. | Part No. | Description |
|----------|--------------|----------------------------------|
| | PB7256BP200K | Volume PCB Assy. |
| | JKJH001 | Headphone Jack |
| | SPSP022 | Switch Push |
| S12 | SPSP020 | Switch Power |
| S11 | M1 | Meter, Signal Indicator |
| | M1 | AC Outlet |
| | JKJA001 | Power Transformer |
| | TDTA097A | Pilot Lamp 6.3V 150ma |
| PL1-PL8 | LMBP031H | Pilot Lamp 9V 30ma |
| | LMBP034 | Resistor 1/2W 3.3M |
| PL9 | RF50DC335J | Resistor 1/2W 1K |
| R1 | RF50DC102J | Resistor 1W 120 ohm |
| R5 | RFRD5-2.2 | Resistor 5W 2.2 ohm |
| R3, R4 | CKCK120 | Capacitor Ceramic 1000pf 150V AC |
| R2 | CK22344-1 | Capacitor Ceramic 5pf |
| C3 | LCHE027 | Trap Coil |
| C2 | RPRQ040 | Slide Control Volume |
| L1, L2 | RRP040 | Cabinet - 2380 |
| VR1 | KK7256B09 | Bottom, Cabinet - 2380 |
| | KK7256B10 | Backboard - 2380 |
| | KK7256B12 | Power Cord - Changer - 2380 |
| | WR2J017 | Front Panel Assy. 2080 |
| | AS7256B11K | Front Panel Assy. 2380 |
| | AS7256CB11K | Dial Plate |
| | N7256B02 | Cabinet 2080 |
| | KK7256B03 | Bottom, Cabinet - 2080 |
| | KK7256B04 | Backboard - 2080 |
| | KK7256B05 | Button, Power |
| | EK7256B06 | Lens, Stereo Indicator |
| | I7256B07 | Tuning Assembly |
| | AS7256C03K | Knob, Tuning with metal Cap |
| | EK7256A04K | Knob, Control with metal band |
| | EK7256A05K | Knob, Program with metal Cap |
| | EK7212A06K | Door Spring |
| | AN7130C15 | Dial Spring |
| | AN1848C23 | Foot |
| | EA2173D06 | Dial Pointer |
| | AP7256A06 | Shielded wire with plug - 2380 |
| | W52J004 | |

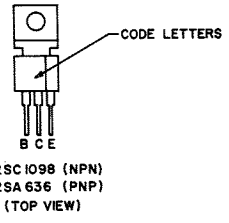
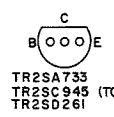
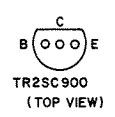
AUDIO CONTROL AMPLIFIER PARTS LIST

| Ref. No. | Part No. | Description |
|----------|----------|-------------|
|----------|----------|-------------|

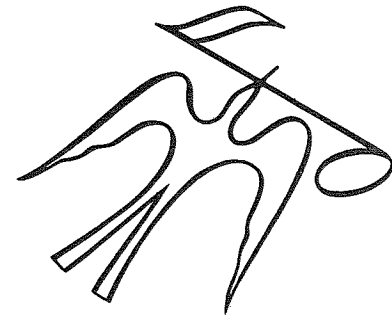


SCHEMATIC DIAGRAM
INPUT, AUDIO CONTROL & POWER AMPLIFIERS

AL 2080-175-2 & (AL2380-175-2) 3/24/75 L.



NOTES



FISHER RADIO • 11-40 45th ROAD • LONG ISLAND CITY • NEW YORK 11101