

Stereophonic

THE FISHER

600

SCHEMATIC and PARTS LIST



MODEL 600

CHASSIS SERIAL NUMBERS
40001-49999 INCLUSIVE

PRICE: \$1.00

FISHER RADIO CORPORATION • NEW YORK

CHASSIS SERIAL NUMBERS
40001-49999 INCLUSIVE

THE FISHER 600

PARTS DESCRIPTION LIST

CAPACITORS

10% tolerance for all fixed capacitors, unless otherwise noted or marked GMV (guaranteed minimum value.)

Symbol	Description	Part No.	Symbol	Description	Part No.
C1	Ceramic, 24uuf 5% N150, 1000V	C50070-8	C80	Electrolytic, four section: A: 10uf, 200V B: 10uf, 200V C: 30uf, 300V D: 30uf, 300V	C50180-1
C2	Ceramic, 100uuf N1500, 1000V	C50070-6	C81, 82	Ceramic, .01uf 20%, 500V	C50089-3
C3, 4	Ceramic, 8uuf ± .5uuf NPO, 500V	CC20CJ080D5	C83	Ceramic, 16uuf N75, 1000V	C50070-21
C5	Ceramic, Trimmer	C662-123	C84, 85	Ceramic, .01uf 20%, 500V	C50089-3
C6	AM Variable	Part of C9	C86, 87	Electrolytic, 25uf, 6V	C639-114
C7	Ceramic, 100uuf N1500, 1000V	C50070-6	C88	Ceramic, .001uf, 1000V	C50072-3
C8	FM Variable	C726-116	C89	Mylar, .01uf, 250V	C50197-48
C9	AM Variable	C684-127	C92	Ceramic, .001uf, 1000V	C50072-3
C10	Ceramic, Feedthru, .001uf GMV	C592-187	C93	Mylar, .01uf, 250V	C50197-48
C11	Ceramic, 100uuf N1500, 1000V	C50070-6	C94	Ceramic, 220uuf, 1000V	C50072-20
C12	Mylar, .047uf, 250V	C50197-52	C97	Ceramic, 220uuf, 1000V	C50072-20
C13	Ceramic, .001uf, 1000V	C50072-3	C98	Ceramic, .0033uf, 1000V	C50072-11
C14	Ceramic, Feedthru, .001uf GMV	C592-187	C101	Ceramic, .0033uf, 1000V	C50072-11
C15	Ceramic, 8uuf ± .5uuf NPO, 500V	CC20CJ080D5	C102, 103	Mylar, .022uf, 250V	C50197-49
C16	Ceramic, Trimmer	C662-123	C104, 105	Ceramic, 47uuf N750, 1000V	C50070-4
C17	Ceramic, .02uf +80—20%, 500V	C50089-4	C108	Mylar, .01uf, 250V	C50197-48
C18	Molded, .01uf 20%, 600V	C2747	C110	Mylar, .01uf, 250V	C50197-48
C19	Ceramic, 100uuf N1500, 1000V	C50070-6	C114	Molded, .002uf, 200V	C68P202K2
C20	Ceramic, .02uf +80—20%, 500V	C50089-4	C115	Ceramic, .001uf, 1000V	C50072-3
C21	Ceramic, 68uuf N750, 500V	CC20UJ680K5	C116	Molded, .002uf, 200V	C68P202K2
C22	Ceramic, 100uuf N1500, 1000V	C50070-6	C117	Ceramic, .001uf, 1000V	C50072-3
C23	Ceramic, 18uuf N470, 1000V	C50070-13	C118, 119	Electrolytic, 25uf, 6V	C639-114
C24	Ceramic, .005uf 20%, 500V	C50089-1	C120, 121	Ceramic, 100uuf N1500, 1000V	C50070-6
C25	Ceramic, 5uuf ± .5uuf N220, 500V	CC20RH050D5	C122	Mylar, .1uf, 400V	C50197-32
C26	Ceramic, Trimmer	C662-123	C123, 124	Ceramic, 68uuf N2200, 1000V	C50070-12
C27	Ceramic, .68uf 20%, 500V	C50077-6N	C125	Mylar, .1uf, 400V	C50197-32
C28	Ceramic, Feedthru, .001uf GMV	C592-187	C126	Ceramic, 47uuf N750, 1000V	C50070-4
C29	Ceramic, 24uuf 5% N150, 1000V	C50070-8	C127	Ceramic, 15uuf N75, 1000V	C50070-18
C30	Ceramic, 100uuf, N1500, 1000V	C50070-19	C128	Electrolytic, 25uf, 6V	C639-114
C31	Ceramic, 10uuf ± .5uuf NPO, 500V	CC20CH100D5	C129	Ceramic, 470uuf, 1000V	C50072-13
C32	Ceramic, .001uf, 1000V	C50072-3	C130, 131	Mylar, .022uf, 250V	C50197-49
C33	AM Variable	Part of C9	C132	Ceramic, 47uuf N750, 1000V	C50070-4
C34	Ceramic, 100uuf N1500, 1000V	C50070-6	C133	Ceramic, 15uuf N75, 1000V	C50070-18
C35	Ceramic, .005uf 20%, 500V	C50089-1	C134	Electrolytic, 25uf, 6V	C639-114
C36	Ceramic, 2.2uuf, 500V	C3039	C135	Ceramic, 470uuf, 1000V	C50072-13
C37	Electrolytic, four section: A: 40uf, 400V B: 40uf, 350V C: 20uf, 300V D: 20uf, 300V	C50180-2	C136, 137, 138, 139	Molded, .1uf, 20%, 400V	C50197-32
C38	Ceramic, Feedthru, .001uf GMV	C592-187	C140, 141, 142, 143	Ceramic, 390uuf, 1000V	C50072-6
C39	Electrolytic, three section: A: 40uf, 300V B: 40uf, 250V C: 40uf, 250V	C670-125	C144	Electrolytic, 100uf, 100V	C663-143
C40	Ceramic, Feedthru, .001uf GMV	C592-187	C145	Ceramic, 5uuf ± .5uuf N150, 500V	CC20PJ050D5
C41	Ceramic, .02uf +80—20%, 500V	C50089-4	C146	Ceramic, 47uuf N750, 1000V	C50070-6
C42	Ceramic, 100uuf N1500, 1000V	C50070-6	C147	Ceramic, 82uuf N1500, 1000V	C50070-7
C43	Ceramic, .02uf +80—20%, 500V	C50089-4	C148	Ceramic, 68uuf N2200, 1000V	C50070-12
C44	Ceramic, .001uf, 1000V	C50072-3	C149, 150	Ceramic, .005uuf 20% 500V	C50089-1
C45	Ceramic, .005uf 20%, 500V	C50089-1			
C46	Ceramic, .0027uf, 1000V	C50072-17			
C47	Ceramic, .02uf +80—20%, 500V	C50089-4			
C48	Ceramic, Feedthru, .001uf GMV	C592-187			
C49	Ceramic, .005uf 20%, 500V	C50089-1			
C50	Ceramic, 10uuf NPO, 1000V	C50070-11			
C51	AM Variable	Part of C9			
C52	Ceramic, .02uf +80—20%, 500V	C50089-4			
C53	Ceramic, Feedthru, .001uf GMV	C592-187			
C54	Ceramic, .02uf +80—20%, 500V	C50089-4			
C55, 56	Ceramic, .005uf 20%, 500V	C50089-1			
C57	Ceramic, .0027uf, 1000V	C50072-17			
C58	Ceramic, .02uf +80—20%, 500V	C50089-4			
C59	Ceramic, 10uuf NPO, 1000V	C50070-11			
C60	Ceramic, .005uf 20%, 500V	C50089-1			
C61	Ceramic, .0027uf, 1000V	C50072-17			
C62, 63	Ceramic, .005uf 20%, 500V	C50089-1			
C64, 65	Ceramic, 330uuf, 1000V	C50072-1			
C66	Electrolytic, 8uf, 50V	C629-138			
C67	Ceramic, .055uf 20%, 500V	C50089-1			
C68	Ceramic, 330uuf, 1000V	C50072-1			
C69	Ceramic, .01uf 20%, 500V	C50089-3			
C70	Ceramic, .001uf, 1000V	C50072-3			
C71	Mylar, .022uf, 250V	C50197-49			
C72	Ceramic, 900uuf 5%, 500V	CC21GP91J5			
C73	Ceramic, 220uuf, 1000V	C50072-20			
C74	Mylar, .047uf, 250V	C50197-52			
C75	Ceramic, .01uf 20%, 500V	C50089-3			
C76, 77	Ceramic, .02uf +80—20%, 500V	C50089-4			
C78	Ceramic, .01uf 20%, 500V	C50089-3			
C79	Ceramic, 16uuf N75, 1000V	C50070-21			

RESISTORS AND POTENTIOMETERS

In ohms, 10% tolerance, 1/2 watt, unless otherwise noted. K = kilohm, M = megohm.

Symbol	Description	Part No.
R1	Composition, 270	RC20BF271K
R2	Composition, 1K	RC20BF102K
R3	Composition, 4.7	RC20BF4R7K
R4, 5	Composition, 330K	RC20BF334K
R6	Composition, 100K	RC20BF104K
R7, 8	Composition, 2.2M	RC20BF225K
R9	Composition, 100	RC20BF101K
R10	Composition, 22	RC20BF220K
R11	Composition, 2.2K	RC20BF222K
R12	Composition, 47K	RC20BF473K
R13, 14	Composition, 1K	RC20BF102K
R15	Composition, 470K	RC20BF474K
R16	Composition, 1K	RC20BF102K
R17	Composition, 4.7	RC20BF4R7K
R18	Composition, 820K	RC20BF824K
R19	Wirewound, 140, 10W	R720-177
R20	Potentiometer, Wirewound, 500	R516-128
R21	Wirewound, 50, 5W	R556-142
R22	Potentiometer, Wirewound, 500	R516-128
R23	Composition, 150	RC20BF151K
R24	Composition, 150	RC20BF151K
R25	Wirewound, 220, 5W	R551-137
R26	Wirewound, 2200, 7W	R563-148
R27	Composition, 47K	RC20BF473K
R28	Wirewound, 220, 5W	R551-137
R29	Composition, 68K	RC20BF683K
R30	Composition, 1M	RC20BF105K
R31	Composition, 33K, 1W	RC30BF333K
R32	Composition, 1K	RC20BF102K

VOLTAGE MEASUREMENTS

All readings taken with vacuum-tube voltmeter (11 meg. input resistance) with respect to chassis ground, subject to 10% normal variation unless otherwise noted. Line voltage 117 vac, level controls on rear apron at MAX., Tone controls at FLAT, Selector SW at AM-FM, Filters at OFF, AM on SHARP, Stereo-Mono SW in STEREO, Balance Control at FLAT, Volume control at MIN.

R33	Composition, 1K, 1W
R34	Composition, 3.3M
R35	Composition, 22K, 1W
R36	Composition, 150
R37	Composition, 1K
R38	Composition, 270
R39	Composition, 47K
R40	Composition, 270
R41	Composition, 1K
R42	Composition, 33K
R43	Composition, 180
R44, 45	Composition, 2.2M
R46	Composition, 82K
R47	Composition, 470K
R48	Composition, 1K
R49	Composition, 47K, 1W
R50	Composition, 47K
R51	Composition, 1K
R52	Composition, 270
R53	Composition, 10M
R54	Composition, 390K
R55	Composition, 330K
R56	Composition, 470K
R57	Composition, 1K
R58	Composition, 68K
R59	Composition, 100K
R60	Composition, 3.3M
R61	Potentiometer, 250K
R62	Composition, 15K
R63	Composition, 1.5K
R64, 65	Potentiometer, 250K
R66, 67	Composition, 220K
R68, 69	Composition, 10M
R70, 71	Composition, 47K
R72	Composition, 15M
R73	Composition, 2.2M
R74	Composition, 3.3M
R75	Composition, 330K, 1W
R76	Composition, 2.7K, 1W
R77	Composition, 10
R78	Composition, 330K, 1W
R79	Composition, 2.7K, 1W
R80	Composition, 10
R81	Composition, 47K
R82	Composition, 15M
R83	Composition, 2.2M
R84	Composition, 3.3M
R85	Composition, 100K
R86	Composition, 1.2K
R87	Composition, 10K
R88	Composition, 100K
R89	Composition, 10K
R90	Composition, 100K
R91, 92	Composition, 1.2K
R93	Potentiometer, Dual Bass, 1M
R94	Composition, 220K
R95	Composition, 39K
R96	Composition, 18K
R97	Composition, 220K
R102	Composition, 39K
R103	Composition, 18K
R104	Potentiometer, Dual Treble, 1M
R105	Composition, 470K
R108, 109	Composition, 10M
R110	Composition, 4.7M
R111	Composition, 10M
R113	Composition, 4.7M
R114	Composition, 10M
R117	Composition, 10M
R120, 121	Composition, 2.2M
R122, 123	Composition, 220K
R124	Composition, 2.2K
R125, 126	Composition, 100K
R127	Composition, 2.2K
R128	Potentiometer, Dual Balance, 250K
R129, 130	Composition, 47K
R131	Composition, 4.7K
R132	Potentiometer, Dual Volume, 500K
R133	Composition, 4.7K
R134, 135	Composition, 820K
R136	Composition, 220K
R137	Composition, 1.5K
R138	Composition, 100
R139	Composition, 6.8K
R140	Composition, 220K

RC30BF102K	Composition, 1.5K
RC20BF335K	Composition, 100
RC30BF223K	Composition, 6.8K
RC20BF151K	Composition, 33K, 1W
RC20BF102K	Composition, 22K
RC20BF271K	Composition, 33K, 1W
RC20BF473K	Composition, 680K
RC20BF271K	Composition, 10K
RC20BF102K	Composition, 680K
RC20BF333K	Composition, 10K
RC20BF181K	Composition, 4.7K, 1W
RC20BF225K	Composition, 1K
RC20BF823K	Composition, 15K
RC20BF474K	Composition, 1K
RC20BF102K	Composition, 4.7K, 1W
RC30BF473K	Composition, 1K
RC20BF473K	Composition, 12K
RC20BF102K	
RC20BF271K	
RC20BF106K	
RC20BF394K	
RC20BF334K	
RC20BF474K	
RC20BF102K	
RC20BF683K	
RC20BF104K	
RC20BF335K	
R50160-3	
RC20BF153K	
RC20BF152K	
R50160-3	
RC20BF224K	
RC20BF106K	
RC20BF473K	
RC20BF156K	
RC20BF225K	
RC20BF335K	
RC30BF334K	
RC30BF272K	
RC20BF100K	
RC30BF334K	
RC30BF272K	
RC20BF100K	
RC20BF473K	
RC20BF156K	
RC20BF225K	
RC20BF335K	
RC20BF104K	
RC20BF122K	
RC20BF103K	
RC20BF104K	
RC20BF103K	
RC20BF104K	
RC20BF122K	
R50160-19	
RC20BF224K	
RC20BF393K	
RC20BF183K	
RC20BF224K	
RC20BF393K	
RC20BF183K	
R50160-19	
RC20BF474K	
RC20BF106K	
RC20BF475K	
RC20BF106K	
RC20BF106K	
RC20BF225K	
RC20BF224K	
RC20BF222K	
RC20BF104K	
RC20BF222K	
R50160-18	
RC20BF473K	
RC20BF472K	
R50160-17	
RC20BF472K	
RC20BF824K	
RC20BF224K	
RC20BF152K	
RC20BF101K	
RC20BF682K	
RC20BF224K	

R141	Composition, 1.5K
R142	Composition, 100
R143	Composition, 6.8K
R144, 145	Composition, 33K, 1W
R146, 147	Composition, 22K
R148, 149	Composition, 33K, 1W
R150, 151	Composition, 680K
R152	Composition, 10K
R153, 154	Composition, 680K
R155	Composition, 10K
R156	Composition, 4.7K, 1W
R157	Composition, 1K
R158, 159	Composition, 15K
R160	Composition, 1K
R161	Composition, 4.7K, 1W
R162, 163	Composition, 1K
R164, 165	Composition, 12K

RC20BF152K	Composition, 1.5K
RC20BF101K	Composition, 100
RC20BF682K	Composition, 6.8K
RC30BF333K	Composition, 33K, 1W
RC20BF223K	Composition, 22K
RC30BF333K	Composition, 33K, 1W
RC20BF684K	Composition, 680K
RC20BF103K	Composition, 10K
RC20BF684K	Composition, 680K
RC20BF103K	Composition, 10K
RC30BF472K	Composition, 4.7K, 1W
RC20BF102K	Composition, 1K
RC20BF153K	Composition, 15K
RC20BF102K	Composition, 1K
RC30BF472K	Composition, 4.7K, 1W
RC20BF102K	Composition, 1K
RC20BF123K	Composition, 12K

COILS, CHOKES AND TRANSFORMERS

Symbol	Description	Part No.
L1	Choke, 3.3 Micro Henries	L50066-8
L2	Coil, FM Antenna	L726-124
L3	Coil, AM Antenna	L721-139
L4	AM Ferrite Loop	L721-136
L5	Choke, 1 Micro Henry	L50066-2
L6, 7	Choke, .56 Micro Henries	L50066-19
L8	Choke, RF	L629-180
L9	Coil, FM RF	L726-126
L10	Coil, FM Oscillator	L726-125
L11, 13	Choke, 1 Micro Henry	L50066-2
L12	Choke, .56 Micro Henries	L50066-19
L14,	Choke, 1.2 Micro Henries	L50066-3
15, 16,		
17, 18	Choke, Filament Ferrite Bead	L592-189
L19	Coil, AM Oscillator	L50210-21
L20	Choke, 1.2 Micro Henries	L50066-3
L21	Coil, 10kc Filter	L644-120
T1	Transformer, Power	T720-115
T2, 3	Transformer, Output	T720-116
Z1	Transformer, FM IF	ZZ662-117
Z2	Transformer, FM IF	ZZ2987
Z3	Limiter Coil Assembly	L670-145
Z4	Transformer, FM Detector	ZZ592-170
Z5	Transformer, AM RF	L556-125
Z6	Transformer, AM IF	ZZ50210-1
Z7	Transformer, AM IF	ZZ2984

MISCELLANEOUS

Symbol	Description	Part No.
F1	Fuse, 3.2 Ampere, Slo-Blo	F3319
PC1, 2	Printed Circuit, Phono Equalization	PC50187-3
	C90, 91	390uuf 10 %
	C95, 96	560uuf 10 %
	C99, 100	1500uuf 10 %
	R98, 100	270K 10 %
	R99, 101	2M 20 %
	R106, 107	120K 10 %
PC3, 4	Printed Circuit, High Frequency Filter	PC50187-2
	C106, 107	220uuf 20 %
	C109, 111, 112, 113	100uuf 20 %
	R112, 115, 116, 118	100K 20 %
11, 2	Lamp, Dial Panel	I-50082-3
S1	Switch, Selector	S720-154
S2	Switch, Mono-Stereo	S720-151
S3	Switch, Slide	S50200-2
S4	Switch, Power	Part of R132
S5, 6, 7,		
8, 9	Switch, Slide	S50200-2

MECHANICAL PARTS

Symbol	Description	Part No.
—	Dress Panel, Screened	A5720-114
—	FM Dial Pointer	A720-158
—	AM Dial Pointer	A720-159
—	Knob, Tuning	E50133-1
—	Knob, Selector and Mono-Stereo	E50133-2
—	Knob, Bass and Treble, Rear	E50153-1
—	Knob, Bass and Treble, Front	E50152
—	Knob, Volume and Balance	E50154-1
—	9-Pin Tube Shield	E3287
—	7-Pin Tube Shield	E3330
—	Speaker Terminal Strip	E50170-10
—	Plastic Leg	H657-145
—	Dial Glass	N720-113
—	Fuse Holder	X1036

SYMBOL	TUBE	TUBE SOCKET PIN NUMBER									
		1	2	3	4	5	6	7	8	9	
V1	ECC85 6AQ8	FM RF	184	90	0	0	6.3AC	90	-0.55	0	0
V2	ECC85 6AQ8	FM MIX OSC	164	-1.8	0	6.3AC	0	160	-3.0	0	0
V3	6AU6	1st FM IF	0	0	6.3AC	0	180	175	0.7	-	-
V4	6AU6	2nd FM IF	0	0	6.3AC	0	180	90	0.9	-	-
V5	6AU6	Limiter 300 FM IF	-0.55	0	6.3AC	0	180	65	0	-	-
V6	EMF84 6FG16	FM Tuning Eye	-0.65	NC	0	6.3AC	0	180	110	NC	110
V7	6BJ6	AM RF	-0.1	0.8	6.3AC	0	175	80	0	-	-
V8	ECH81/6AQ8	AM MIX OSC	80.0	0	1.3	0	6.3	180	-5.0	110	-5.0
V9	EBF89	IF Detector	85.0	0	1.55	6.3	0	180	0	1.1	0
V10	EMF8A 6FG6	AM Tuning Eye	1.15	NC	1.65	6.3AC	0	180	50	NC	50
V11	GZ34 5AR4	Rect	NC	FIL	NC	AC	NC	AC	NC	400	-
V12	EZ80 6V4	Rect	AC	NC	225	FIL	FIL	NC	AC	NC	NC
V13	7025 ECC83 12AX7	Pre Amp	140	0	1.2	FIL	FIL	165	0	1.2	FIL
V14	7199	Driver Phase Inv	180	95	55	FIL	FIL	1.9	0	100	90
V15	7189	Outpost Audio	NC	11	23.5	FIL	FIL	NC	380	NC	320
V16	7189	Audio Output	NC	11	23.5	FIL	FIL	NC	380	NC	320
V17	7025 ECC83 12AX7	Pre Amp	120	0	1.05	23.5	12.5	100	-0.55	0	NC
V18	7025 ECC83 12AX7	Pre Amp	115	0	1.05	12	0	105	-0.65	0	NC
V19	7025 ECC83 12AX7	Pre Amp	170	0	1.2	FIL	FIL	150	0	1.2	FIL
V20	7199	Driver Phase Inv.	180	95	55	FIL	FIL	1.9	0	100	95
V21	7189	Power Amp.	NC	11	23.5	FIL	FIL	NC	380	NC	320
V22	7189	Power Amp.	NC	11	23.5	FIL	FIL	NC	380	NC	320

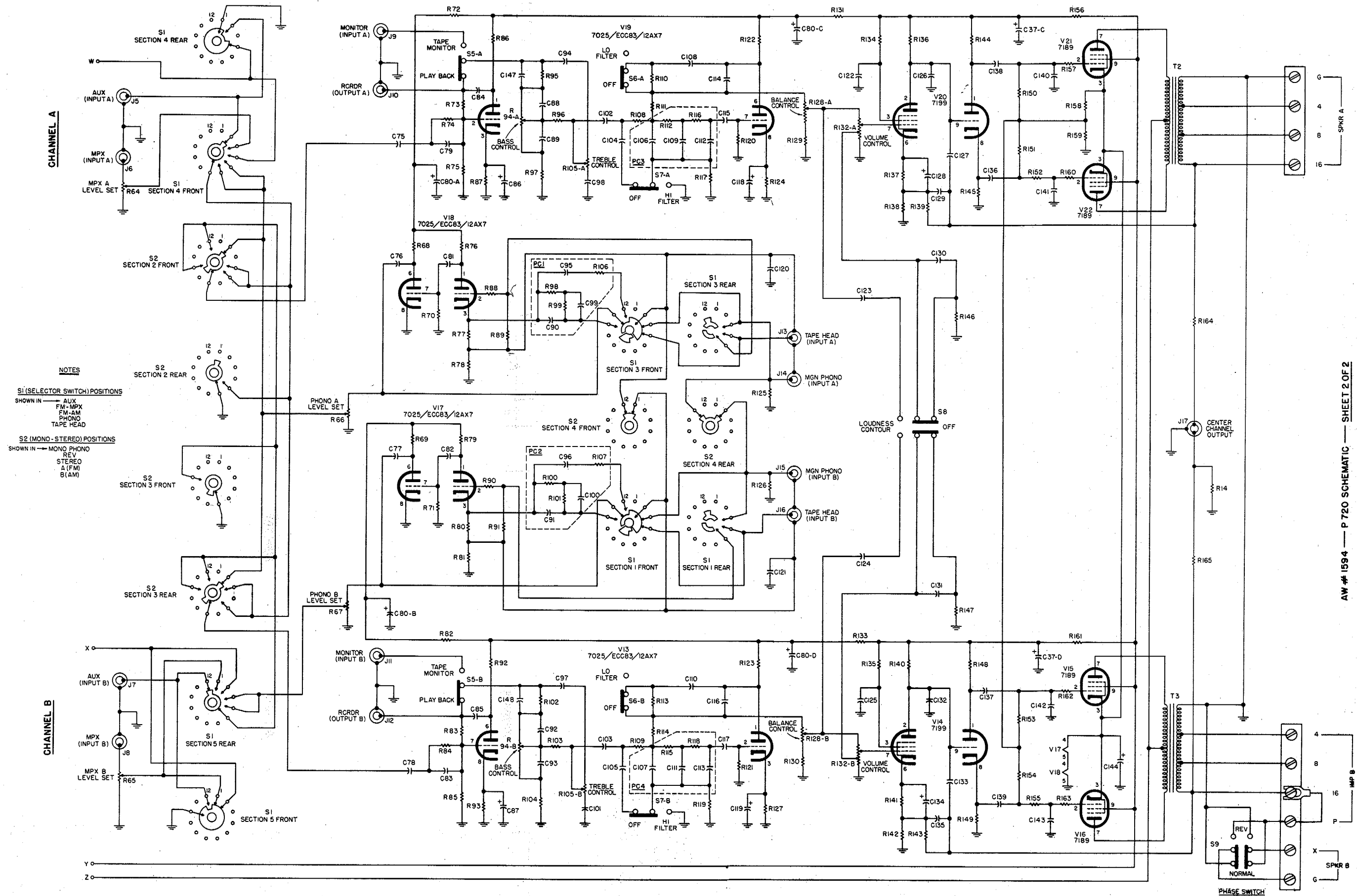
TERMINAL SYMBOL	▲	■	●	—
ELECTROLYTIC CAPACITOR	C37	380	320	283
VOLTAGE	C80	270	270	227
	C39	214	200	185

NOTES
AC=AC volts
NC=No connection



FISHER RADIO CORPORATION • NEW YORK

SCHEMATIC DIAGRAM • AMPLIFIER SECTION

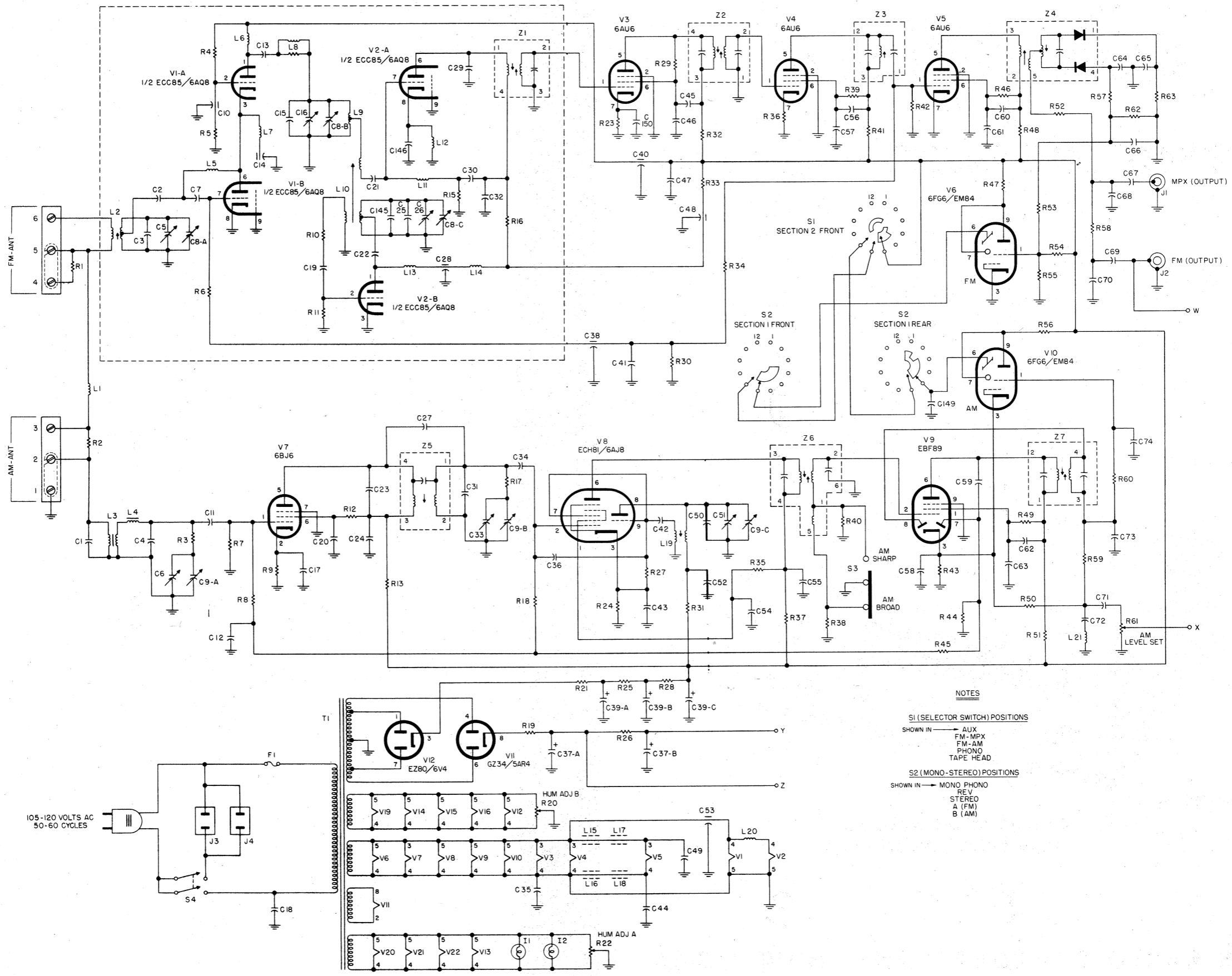


NOTES

S1 (SELECTOR SWITCH) POSITIONS
 SHOWN IN → AUX
 FM-MPX
 FM-AM
 PHONO
 TAPE HEAD

S2 (MONO-STEREO) POSITIONS
 SHOWN IN → MONO PHONO
 REV
 STEREO
 A (FM)
 B (AM)

SCHEMATIC DIAGRAM • TUNER SECTION



NOTES

S1 (SELECTOR SWITCH) POSITIONS
 SHOWN IN → AUX
 FM-MPX
 FM-AM
 PHONO
 TAPE HEAD

S2 (MONO-STEREO) POSITIONS
 SHOWN IN → MONO PHONO
 REV
 STEREO
 A (FM)
 B (AM)