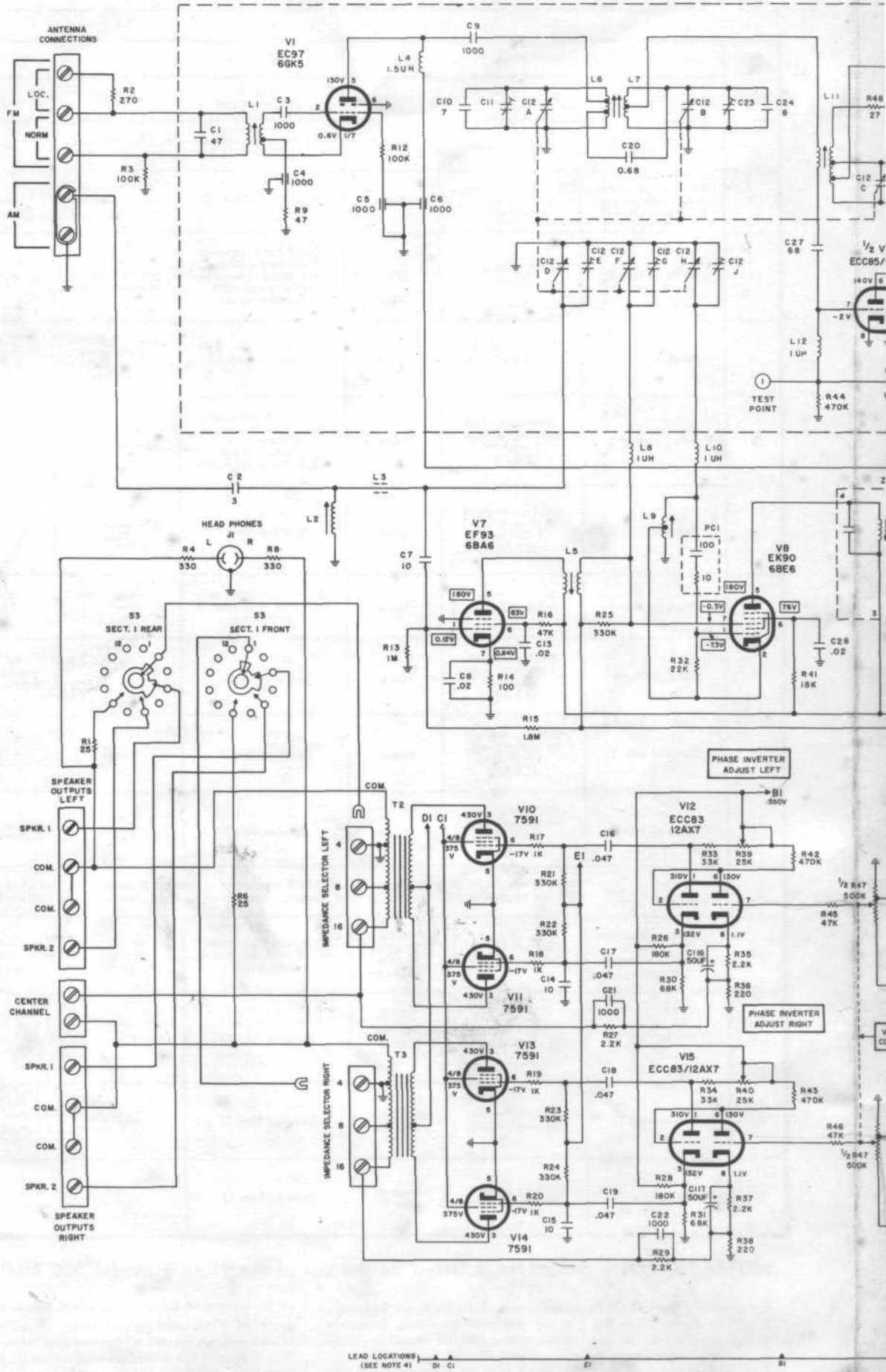
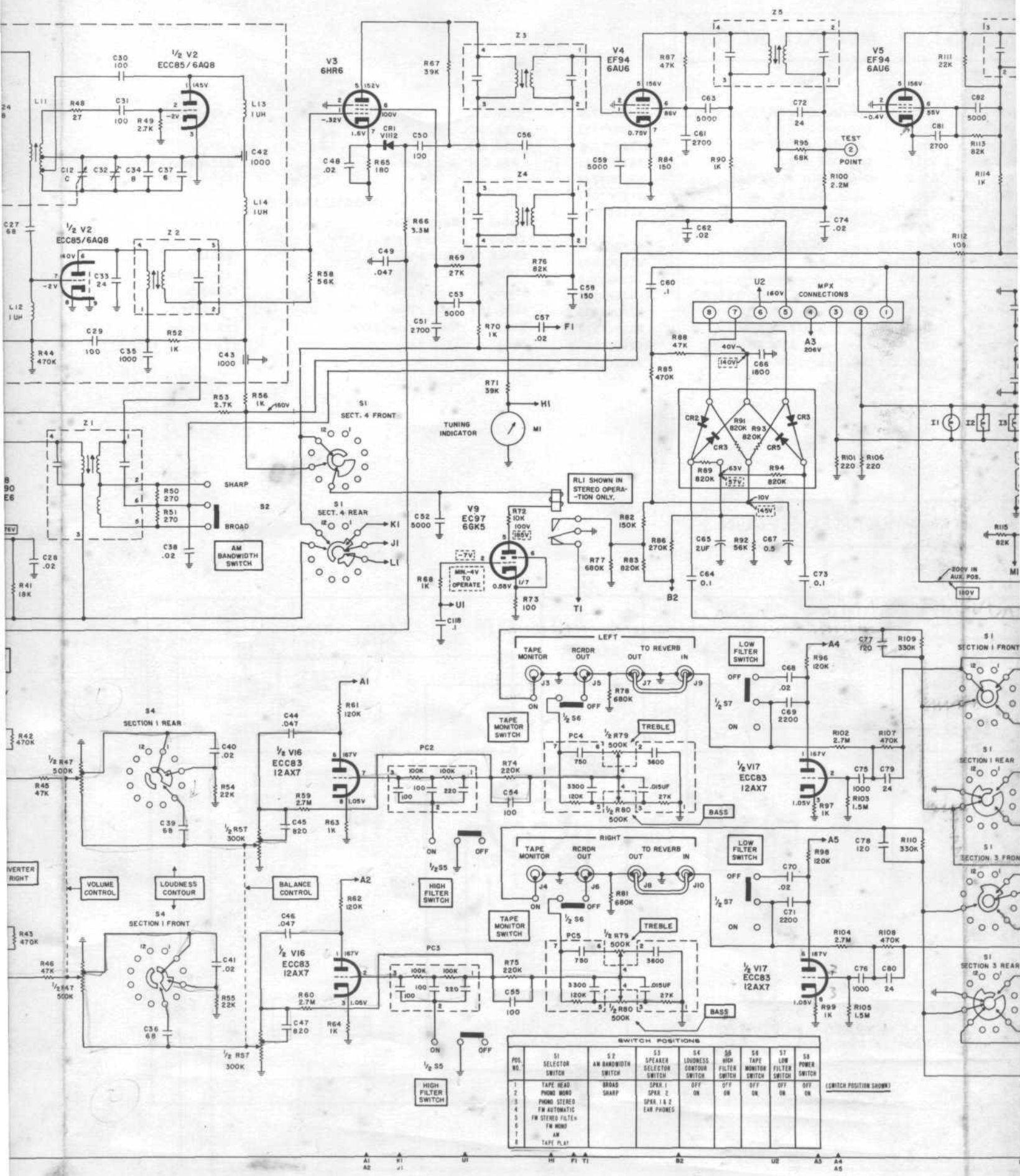


SCHEMATIC DIAGRAM

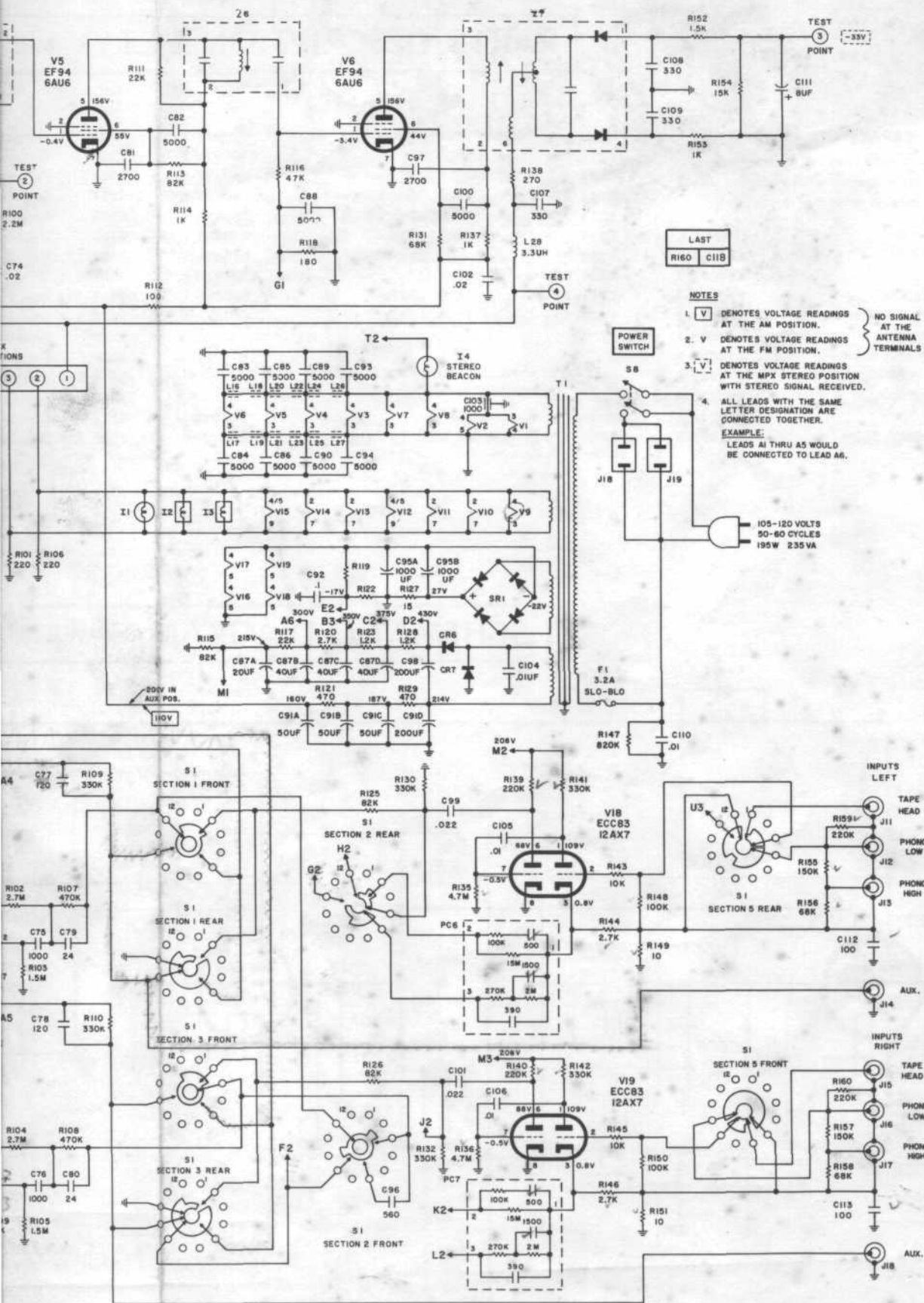




SWITCH POSITIONS

POS. NO.	S1 SELECTOR SWITCH	S2 AM BANDWIDTH SWITCH	S3 SPEAKER SELECTOR SWITCH	S4 LOUDNESS CONTOUR SWITCH	S5 HIGH FILTER SWITCH	S6 TAPE MONITOR SWITCH	S7 LOW FILTER SWITCH	S8 POWER SWITCH
1	TAPE HEAD	BROAD	SPK. 1	OFF	OFF	OFF	OFF	OFF
2	PHONO MONO	SHARP	SPK. 2	ON	OFF	OFF	OFF	OFF
3	PHONO STEREO		SPK. 1 & 2	OFF	ON	OFF	OFF	OFF
4	FM AUTOMATIC		EAR PHONES	OFF	OFF	OFF	OFF	OFF
5	FM STEREO FILTER			OFF	OFF	OFF	OFF	OFF
6	FM MONO			OFF	OFF	OFF	OFF	OFF
7				OFF	OFF	OFF	OFF	OFF
8	TAPE PL. 1			OFF	OFF	OFF	OFF	OFF

(SWITCH POSITION SHOWN)



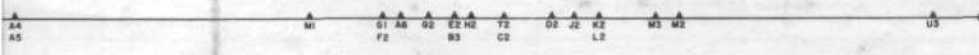
LAST
R160 C11B

NOTES

1. V DENOTES VOLTAGE READINGS AT THE AM POSITION.
2. V DENOTES VOLTAGE READINGS AT THE FM POSITION.
3. V DENOTES VOLTAGE READINGS AT THE MPX STEREO POSITION WITH STEREO SIGNAL RECEIVED.
4. ALL LEADS WITH THE SAME LETTER DESIGNATION ARE CONNECTED TOGETHER.

EXAMPLE:
LEADS A1 THRU A5 WOULD BE CONNECTED TO LEAD A6.

AW 2101F P 990 SCHEMATIC



PARTS DESCRIPTION LIST • MUL

CAPACITORS

10% tolerance for all fixed capacitors, unless otherwise noted or marked GMV (guaranteed minimum value). All capacitors not marked uf are pF (uuf).

Symbol	Description	Part No.
C200	Ceramic, .01uf, +80 — 20%, 500V	C50089-7
C201	Ceramic, 680, 1000V	C50072-2
C203	Ceramic, 220, 1000V	C50183-3
C204	Polystyrene, 470, 5%, 500V	C50394-1
C205	Ceramic, 82, 1000V	C50070-1
C206	Ceramic, 1000, GMV, 500V	C50089-2
C207	Ceramic, 5000, +80 — 20%, 500V	C50089-6
C208, 209	Mica, 4700, 5%, 500V	C50332-5
C210	Electrolytic, 1uf, 350V	C50283-3
C211	Ceramic, 1000, GMV, 500V	C50089-2

C212	Ceramic, .05uf, +80 — 20%, 100V	C50073-2
C214	Mylar, 4700, 400V	C50197-25
C215	Mica, 3900, 5%, 500V	C50332-6
C216, 217	Ceramic, 1000, GMV, 500V	C50089-2
C218	Ceramic, .02uf, 20%, 500V	C50089-5
C219	Ceramic, 330, 1000V	C50183-5
C220	Ceramic, .02uf, 20%, 500V	C50089-5
C221, 222	Mylar, .047uf, 250V	C50197-52
C223, 224	Ceramic, 1000, 1000V	C50072-3
C225, 226	Ceramic, 2200, 1000V	C50072-5

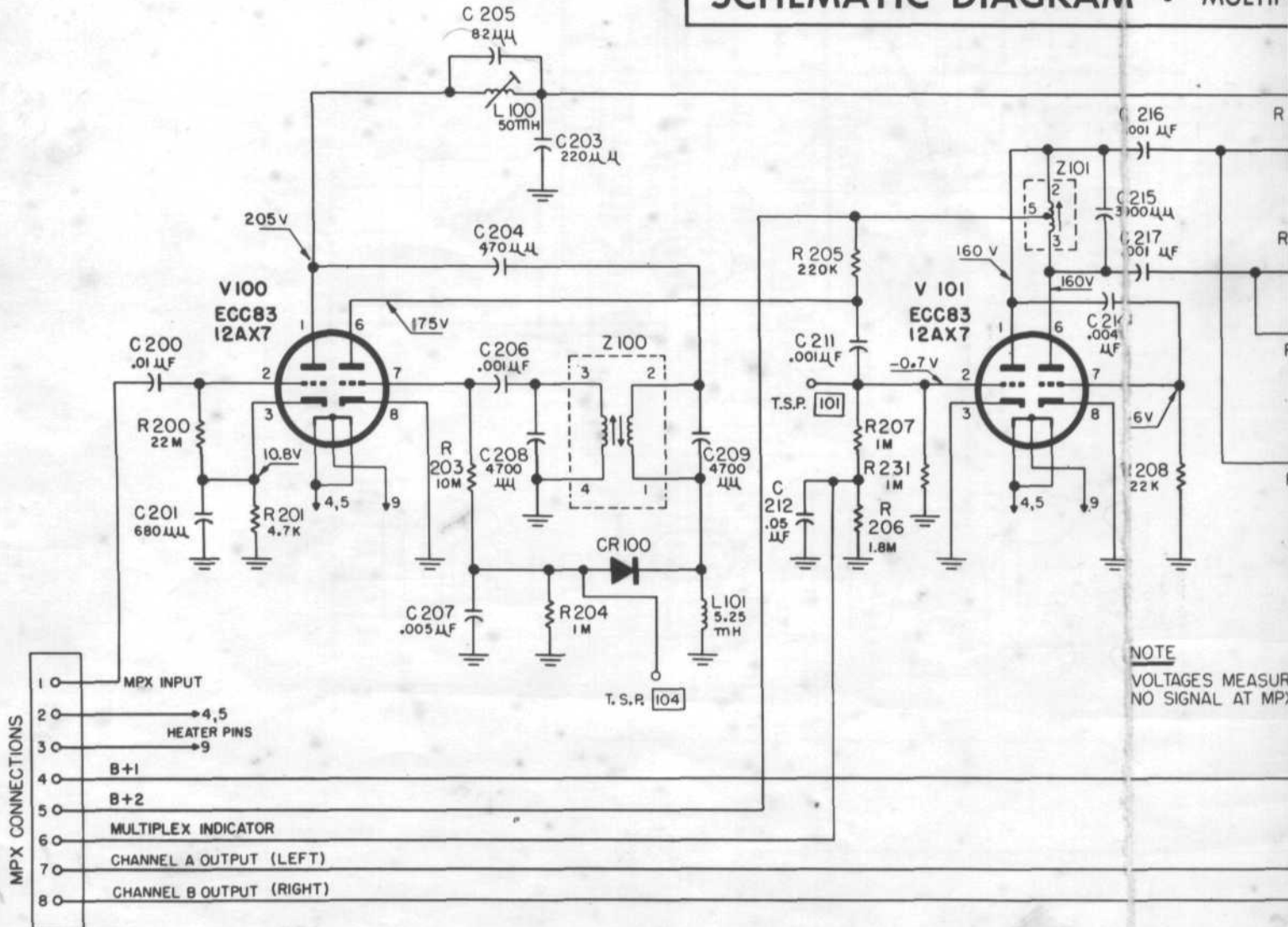
RESISTORS

In ohms, 5% tolerance, 1/8 W unless otherwise noted. K=Kilohms, M=Megohms.

Symbol	Description	Part No.
R200	Composition, 22M, 10%, 1/8 W	RC20BF226K

R201	Comp
R202	Comp
R203	Comp
R204	Dep. C
R205	Dep.
R207	Dep.
R208	Dep. C
R209, 210,	
211, 212	Dep. C
R213, 214	Dep. C
R215	Potent
R216	Comp
R217, 218	Dep. C
R219, 220	Dep. C
R221	Comp
R222, 223	Dep. C

SCHEMATIC DIAGRAM • MULTIP



NOTE
VOLTAGES MEASURED
NO SIGNAL AT MPX

OPTION LIST • MULTIPLEX SECTION

100V	C50073-2	R201	Composition, 4.7K, 1/2 W
	C50197-25	R202	Composition, 15K, 1/2 W
	C50332-6	R203	Composition, 10M, 10%, 1/2 W
	C50089-2	R204	Dep. Carbon, 1M
	C50089-5	R205	Dep. Carbon, 220K, 1/2 W
	C50183-5	R207	Dep. Carbon, 1M
	C50089-5	R208	Dep. Carbon, 22K
	C50197-52	R209, 210,	
	C50072-3	211, 212	Dep. Carbon, 33K
	C50072-5	R213, 214	Dep. Carbon, 100K
		R215	Potentiometer, 50K, MPX Separation
		R216	Composition, 22M, 10%, 1/2 W
		R217, 218	Dep. Carbon, 18K, 1/2 W
		R219, 220	Dep. Carbon, 15K, 1/2 W
		R221	Composition, 22M, 10%, 1/2 W
		R222, 223	Dep. Carbon, 27K

RC20BF472J	R224, 225	Dep. Carbon, 22K
RC20BF153J	R226, 227,	
RC20BF106K	228, 229,	
R12DC105J	230, 231	Dep. Carbon, 1M
R33DC224J		
R12DC105J		
R12DC223J		
R12DC333J		
R12DC104J		
R50150-4		
RC20BF226K		
R33DC183J		
R33DC153J		
RC20BF226K		
R12DC273J		

MISCELLANEOUS

Symbol	Description	Part No.
CR100	Diodes, Type 1112	V-1112
CR102, 103	Bridge	V50160-13
L100	Coil, low pass	L50210-30
L101	Coil, 5.25MH	L50334-1
L102, 103	Coil, 20MH	L50334-2
Z100	Transformer, 19Kc	ZZ50210-34
Z101	Coil, 38Kc	ZZ50210-33

ess otherwise noted.

Part No.
RC20BF226K

DIAGRAM • MULTIPLEX SECTION

