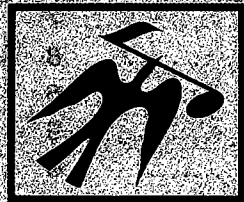


SERVICE MANUAL



FISHER®

CA-283

WITH WIRELESS REMOTE CONTROL REM-285

**Integrated
Stereo Amplifier**



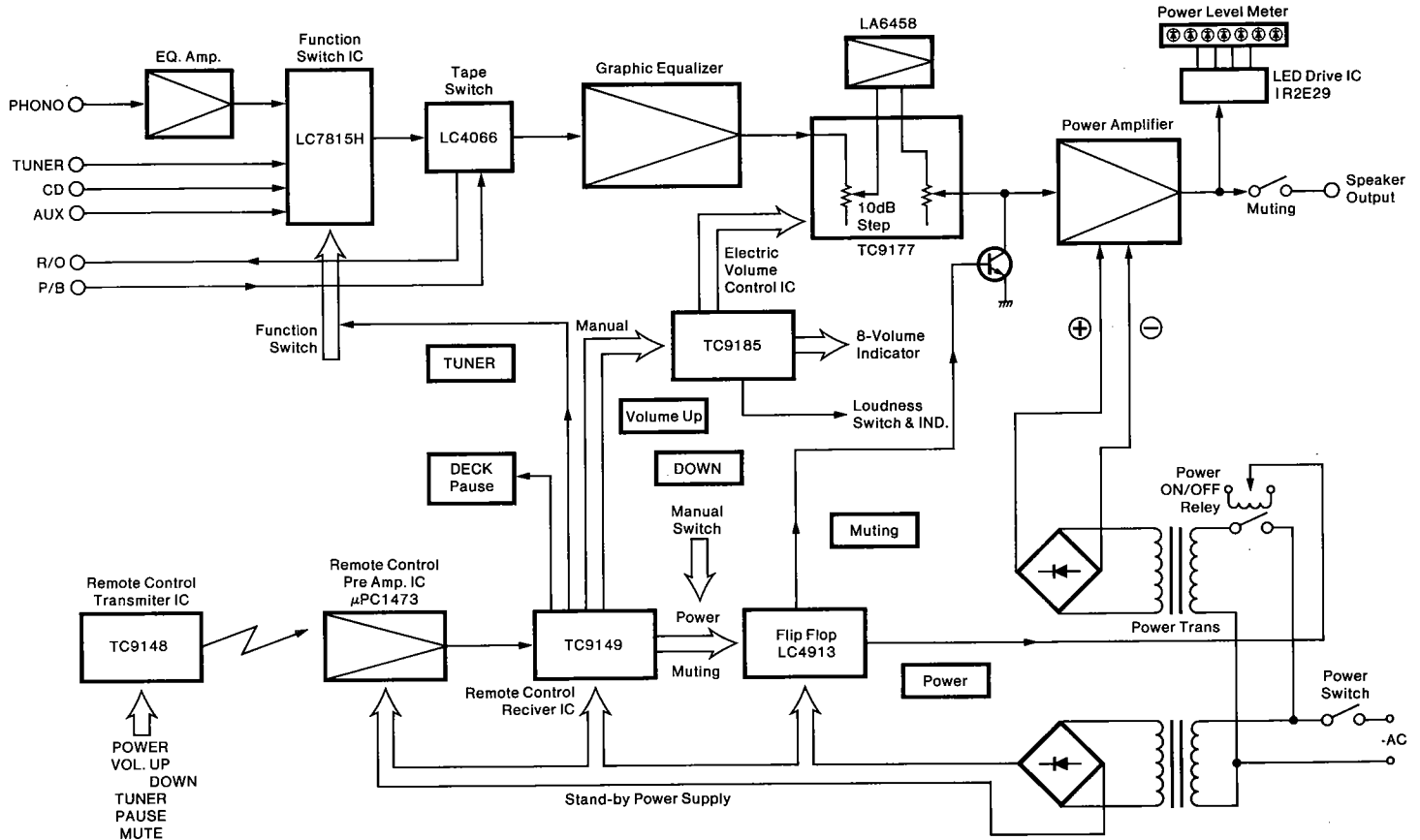
132 293 20

**U.S.
WM-14747**

CONTENTS

Functional Block Diagram	2
Specifications	3
Cabinet & Chassis Exploded View	4,5
Parts List	6
Disassembly Instruction (Remote Control Box)	7
Remote Control Box Exploded View & Parts List	7
Remote Control P.C.Board (Bottom View)	8
P.C.Board Parts List	8
Recommended Test Equipments	9
Harmonic Distortion Test	9
Power Amplifier Adjustment	10
Amplifier P.C.Board Layout Alignment Points (Top View)	10
Integrated Circuit Block Diagram	11,12,13,14
Printed Circuit Board Assy Parts List	15,16,17,18,19,20
Printed Circuit Board (Bottom View)	21,22,23,24,25,26
Point to Point Wiring Diagram	27,28
Schematic Diagram (Amplifier Section)	29,30
Schematic Diagram (Remote Control Section)	31
Semiconductor Lead Identification	32,33

FUNCTIONAL BLOCK DIAGRAM

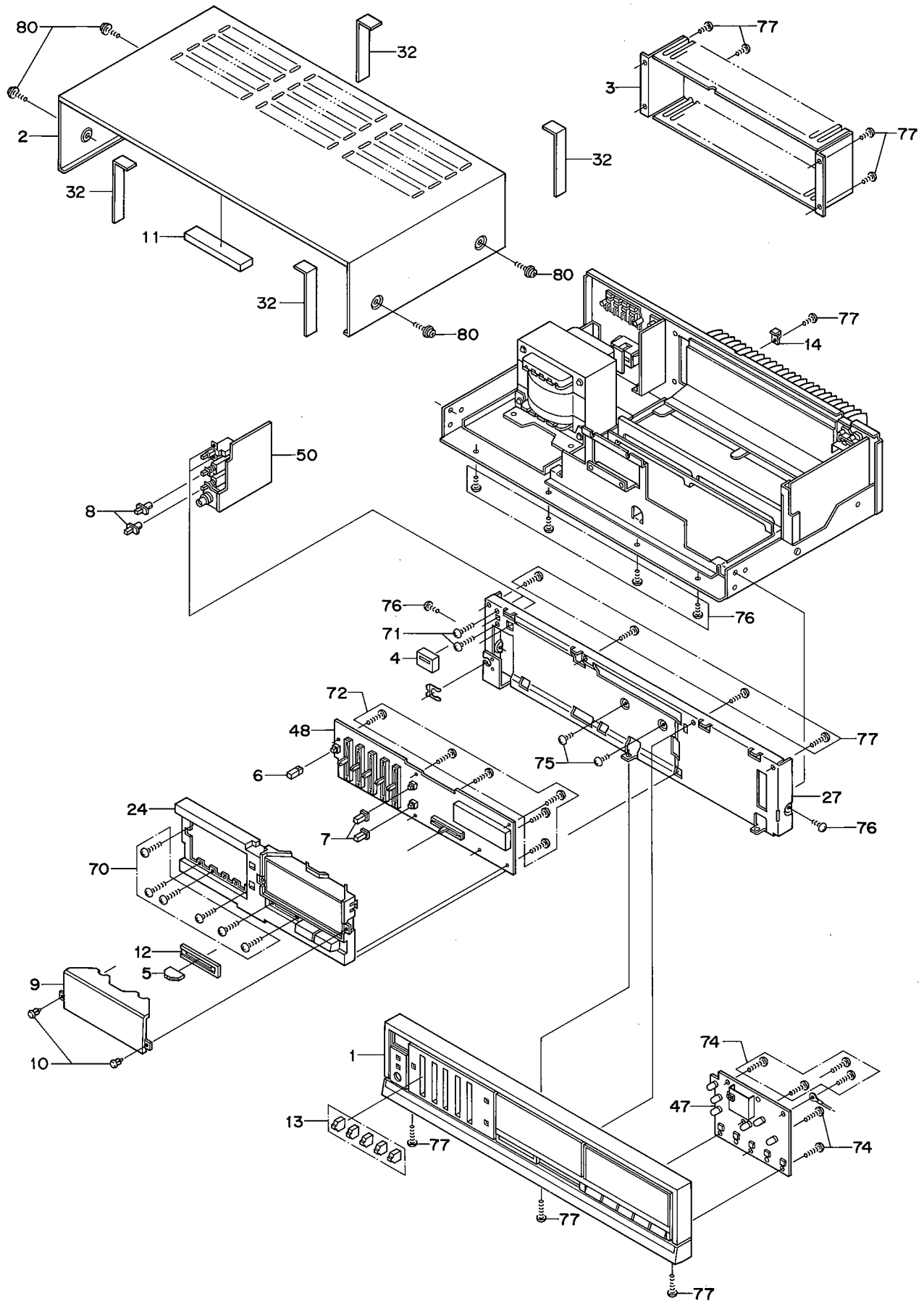


SPECIFICATIONS

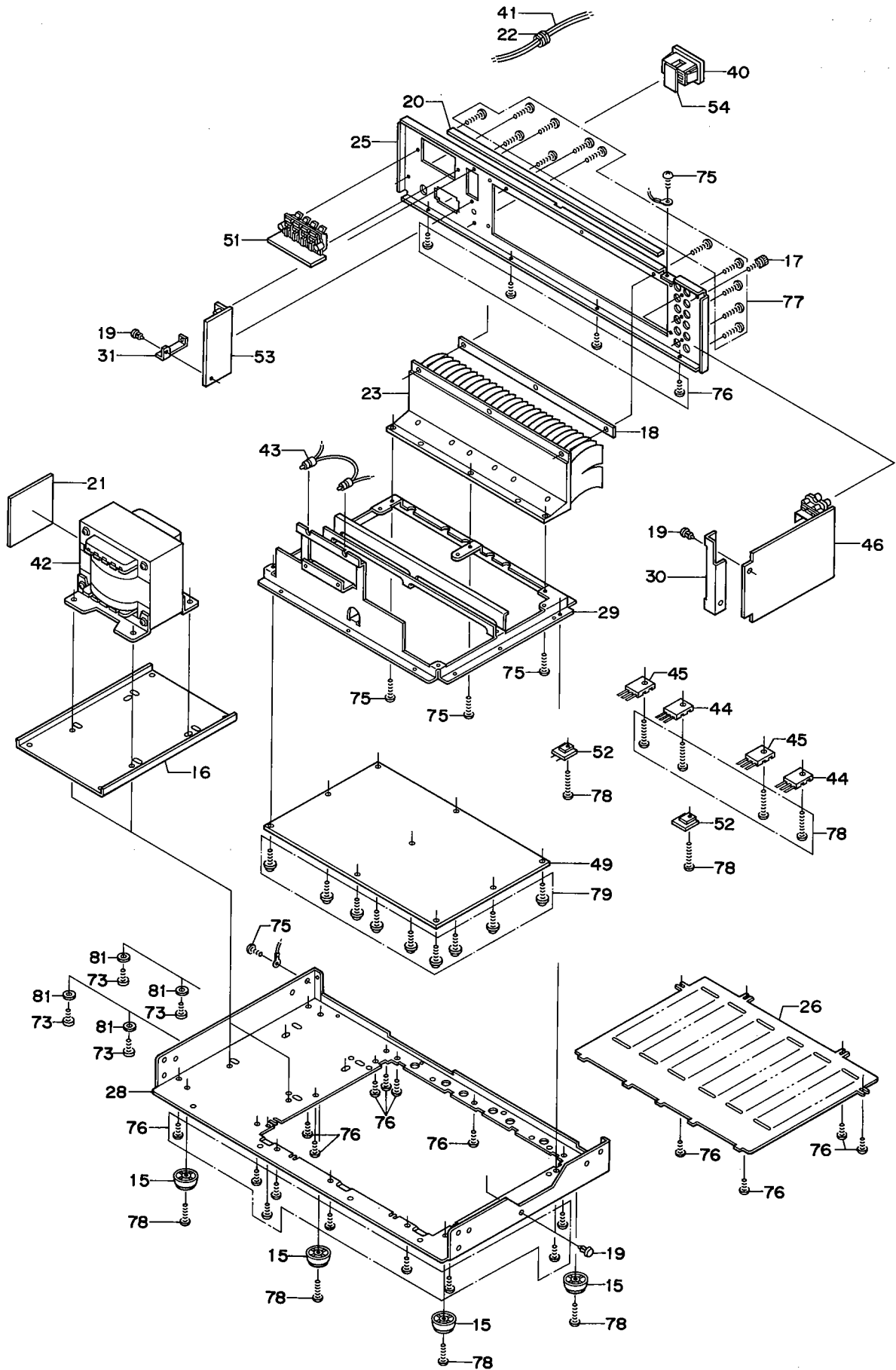
AMPLIFIER	CA-283
POWER AMPLIFIER SECTION Minimum RMS sine wave power per channel within stated bandwidth at no more than stated distortion and with 8-ohm load	100 Watts
Power Bandwidth	20 Hz – 20 kHz
Total Harmonic Distortion	0.05 %
I.M. Distortion	0.05 %
Speaker Damping	> 20
PREAMPLIFIER SECTION Frequency Response	
Phono (RIAA)	±1 dB
Aux (20 Hz – 20 kHz)	±1 dB
Input Sensitivity and Impedance	
Phono	2.5 mV/50 kΩ
Tape Monitor	150 mV/50 kΩ
Tuner/Auxiliary/CD	150 mV/50 kΩ
Phono Max. Input Capability	125 mV
Graphic Equalizer	
63 Hz	±10 dB
250 Hz	±10 dB
1 kHz	±10 dB
4 kHz	±10 dB
16 kHz	±10 dB
Loudness Contour (100 Hz/10 kHz)	+8 dB/+4 dB
Hum & Noise (IHF Short Circuit, A Network)	
Phono	70 dB
Tape Monitor	90 dB
Tuner/Auxiliary/CD	90 dB
GENERAL	
Power Requirements (50/60 Hz)	120 V AC ±10%
Power Consumption	470 Watts
AC Outlet	2
Dimensions (W x H x D)	17.33" x 4.18" x 12.25"
Weight (approx.)	17.5 lbs.

Because its products are subject to continuous improvement, Fisher Corporation reserves the right to modify product designs and specifications without notice and without incurring any obligation.

CABINET & CHASSIS EXPLODED VIEW (1)



CABINET & CHASSIS EXPLODED VIEW (2)



PARTS LIST

Ref. No.	Part No.	Description	Q'ty	Ref. No.	Part No.	Description	Q'ty
PACKING PARTS LIST				21	131-2-5205-33800	Cushion	1
	3-9415-10300	Bag Polyethylene	1	22	131-2-6111-11300	Bushing (Power Cord)	1
	131-2-7103-51700	Label	1	23	131-2-6201-36000	Heat Sink	1
	131-6-3069-16350	Patching Sheet	1	24	141-0-3519-24500	Mount P.C.B. Assy	1
	131-6-9459-00300	Rubber Band	1		131-2-1601-93500	Knob Volume	1
	141-6-1189-10300	Box Corrugate-Exp.	1		141-2-1449-65101	Screen LED	1
	141-6-1469-09300	Pad Styrofoam (Front)	1		141-2-3519-75500	Mount P.C.B.	1
	141-6-1469-09400	Pad Styrofoam (Rear)	1	25	141-2-1219-35200	Panel Rear	1
	141-6-1469-09500	Pad Styrofoam (Lid)	1	26	141-2-1259-08900	Plate Bottom	1
	141-6-2519-22290	Sheet Polyethylene	1	27	141-2-2149-26700	Panel Front	1
ACCESSORIES PARTS LIST				28	141-2-3119-26200	Chassis	1
	3-9415-10300	Bag Polyethylene	1	29	141-2-3129-06100	Sub Chassis	1
	131-2-7103-40806	Label (100W)	1	30	141-2-3519-75600	Mount P.C.B.	1
	131-6-2719-10401	Bag Fan	1	31	141-2-3519-76100	Mount P.C.B.	1
	131-6-4159-31000	Note	1	32	131-2-3202-13400	Metal Reinf	4
	131-6-4159-34100	Notes	1	ELECTRICAL PARTS LIST			
	131-6-4159-40600	Catalog (VTR)	1	40	△ 4-2359-78640	AC Socket With/Pola (AC Outlet)	1
	131-6-4319-10802	Service Station List	1	41	△ 4-2432-00362	Power Cord	1
	131-6-4519-14400	Warranty Card	1	42	△ 4-2512-23005	Power Trans [T2]	1
	131-6-4939-00200	Customer Card	1	43	4-6129-70660	Lamp	1
	141-6-4419-23600	Label Bar Code	1	44	4-2039-71971	Transistor, 2SC 3281 [Q1, Q2]	2
	142-6-4119-32511	Explanatory Booklet	1	or	4-2039-72111	Transistor, 2SC 3280 [Q1, Q2]	2
CABINET & CHASSIS PARTS LIST				45	4-2039-71961	Transistor, 2SA 1302 [Q3, Q4]	2
	4-2379-21520	Terminal Lug	2	or	4-2039-72121	Transistor, 2SA 1301 [Q3, Q4]	2
	131-2-7103-26100	Label	1	46	141-0-1939-11600	Input P.C.B. Assy	1
	131-2-7103-46700	Label (UL Caution)	1	47	141-0-1939-11610	Function P.C.B. Assy	1
	141-2-2899-48700	Adhesive Film	2	48	141-0-1939-11620	Graphic Equalizer P.C.B. Assy	1
1	131-0-1016-44900	Panel Decorate Assy	1	49	141-0-1939-11630	Main P.C.B. Assy	1
	4-2359-78079	Connector 1P Assy	1	50	141-0-1939-11640	Power Switch P.C.B. Assy	1
	131-2-1205-28800	Decorate Plate Dial	1	51	141-0-1939-11650	Speaker Out P.C.B. Assy	1
	131-2-1601-91800	Knob Function	1	52	141-0-1939-11660	Transistor P.C.B. Assy	2
	131-2-3608-16600	Filter	1	53	141-0-1939-11670	2nd Outlet P.C.B. Assy	1
	131-2-6113-52300	Shelter	1	54	141-0-1939-11680	AC Outlet P.C.B. Assy	1
	141-2-1129-23800	Cabinet Front	1	C141	CC4-7-3500-ZG00C	Ceramic 0.047μF 50V +80,-20%	1
	141-2-1449-61221	Plate Front	1	C142	CC4-7-3500-ZG00C	Ceramic 0.047μF 50V +80,-20%	1
	141-2-1449-65001	Plate Decorate	1	SCREW PARTS LIST			
	141-2-2899-48500	Adhesive Film	2	70	101-3-1302-00411	Screw, Pan Hd., +M2.0x4	6
	141-2-2899-48600	Adhesive Film	2	71	131-3-1303-00611	Screw, Pan Hd. C SW, +M3.0x6	2
	143-3-1902-60611	Screw, Brazier Hd. Tapping-B, +M2.6x6	1	72	143-3-1302-60611	Screw, Pan Hd. Tapping-B, +M2.6x6	6
2	131-2-1410-26504	Cover	1	73	143-3-1704-00811	Screw, Bind Hd. Tapping-B, +M4.0x8	4
3	131-2-1410-33500	Cover Heat Sink	1	74	143-3-1902-60611	Screw, Brazier Hd. Tapping-B, +M2.6x6	6
4	131-2-1601-93300	Knob (Power)	1	75	143-3-1903-00611	Screw, Brazier Hd. Tapping-B, +M3.0x6	7
5	131-2-1601-93400	Knob (Balance)	1	76	143-3-1903-00811	Screw, Brazier Hd. Tapping-B, +M3.0x8	29
6	131-2-1601-93600	Knob (Stand by)	1	77	143-3-1903-00818	Screw, Brazier Hd. Tapping-B, +M3.0x8	24
7	131-2-1601-93700	Knob Touch (Loudness, Muting)	2	78	143-3-1903-01011	Screw, Brazier Hd. Tapping-B, +M3.0x10	10
8	131-2-1601-69601	Knob (Speaker Selector)	2	79	131-2-4201-25201	Screw, Brazier Hd. Tapping-B, +M3.0x8 Sems	9
9	131-2-3608-16401	Filter	1	80	141-2-4219-38400	Screw, Bind Hd, Tapping-B, +M4.0x8	4
10	131-2-4221-00600	Rivet	2	81	131-2-4203-84200	Washer, 4.2x12x1.0T	4
11	131-2-5205-33300	Cushion	1	NOTES:			
12	131-2-6113-52500	Shelter	1	1. Parts order must contain Model Number, Part Number and Description.			
13	141-2-1659-35900	Knob Slide	5	2. Ordering quantity of screws and resistors must be multiple of 10 pcs.			
14	141-2-3159-03300	Bracket Cover	1	<div style="border: 1px solid black; padding: 5px;"> <p align="center">PRODUCT SAFETY NOTICE</p> <p>Each precaution in this manual should be followed during servicing. Components identified with the IEC symbol Δ in the parts list and the schematic diagram designate components in which safety can be of special significance. When replacing a component identified with Δ, use only the replacement parts designated, or parts with the same ratings of resistance, wattage or voltage that are designated in the parts list in this manual. Leakage-current or resistance measurements must be made to determine that exposed parts are acceptably insulated from the supply circuit before returning the product to the customer.</p> </div>			
15	131-2-1801-14100	Leg	4				
16	131-2-3101-99900	Metal Mount Trans	1				
17	131-2-4201-17800	Screw Ground	1				
18	131-2-4208-47500	Spacer	1				
19	131-2-4221-00600	Rivet	3				
20	131-2-5205-15800	Cushion	1				

DISASSEMBLY INSTRUCTION (WIRELESS REMOTE CONTROL REM-285)

Disassembly Instructions of Remote Control Box

1. Open the battery compartment lid by sliding the notched area of the lid and take out two batteries.
2. Insert the cutter knife between the cabinet top and bottom to get unhinged as shown in Fig. 1. Take care not to scratch the cabinet.
3. Lift the cabinet bottom in the direction of the arrow "A" and slide the cabinet in the direction of the arrow "B" as shown in Fig. 2.
4. As the Remote Control P.C.B. Assy is not fixed by the screw, the cabinet can be easily disassembled.
5. After the repairment, place the Remote Control P.C.B. Assy and assemble the cabinet in the reversed order.

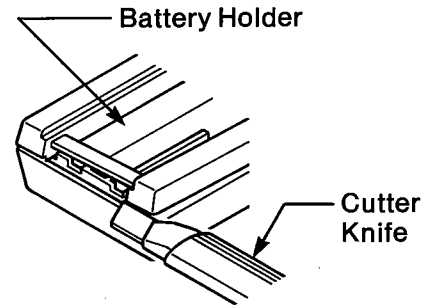


Fig. 1

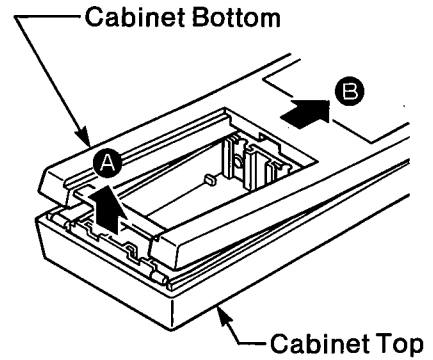
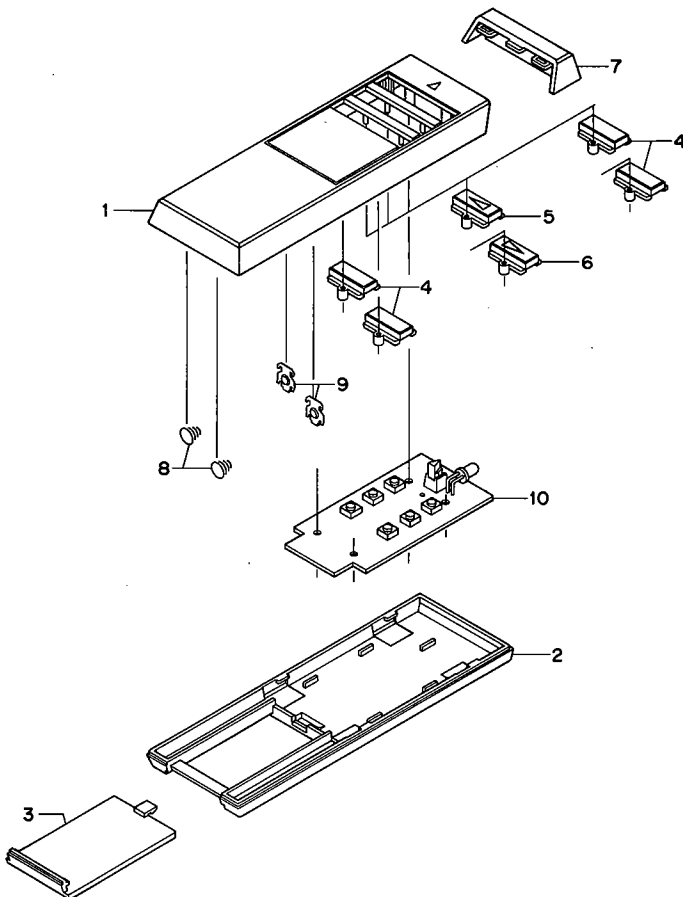


Fig. 2

REMOTE CONTROL BOX EXPLODED VIEW & PARTS LIST



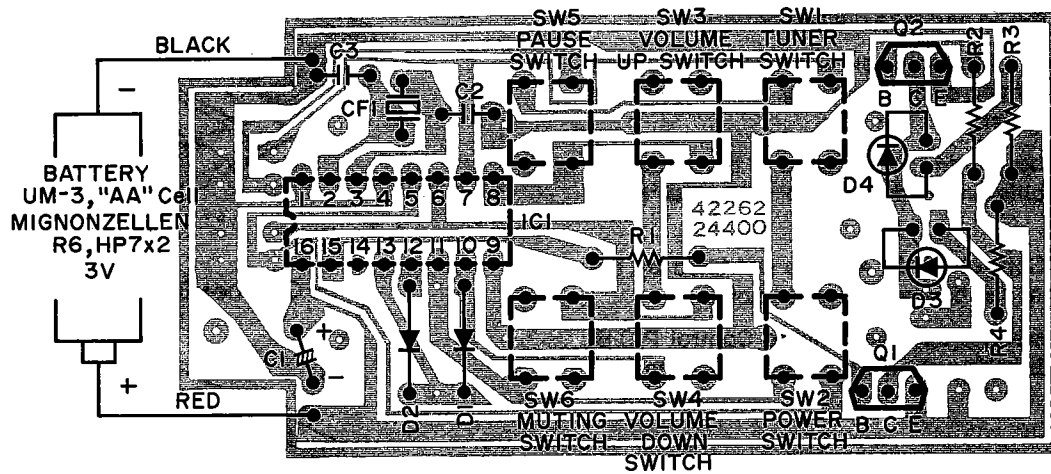
Ref. No.	Part No.	Description	Q'ty
	4-1929-70210	REM-285 (Remote Control)	1
	131-2-1310-40700	Name Plate	1
1	131-2-1101-50900	Cabinet Top	1
2	131-2-1101-51000	Cabinet Bottom	1
3	131-2-1107-27400	Lid Battery	1
4	131-2-1601-93800	Knob A	4
5	131-2-1601-93801	Knob B	1
6	131-2-1601-93802	Knob C	1
7	131-2-6308-23800	Filter	1
8	141-2-3829-19500	Spring Battery	2
9	141-2-3829-32600	Terminal Anode	2
10	141-0-1939-11580	Remote Control P.C.B. Assy	1

NOTES:

1. Parts order must contain Model Number, Part Number and Description.
2. Ordering quantity of screws and resistors must be multiple of 10 pcs.

REMOTE CONTROL P.C.BOARD

(BOTTOM VIEW)



P.C.BOARD PARTS LIST

Ref. No.	Part No.	Description	Q'ty	Ref. No.	Part No.	Description	Q'ty		
REMOTE CONTROL P.C.B. ASSY				SEMICONDUCTORS					
10	141-0-1939-11580	Remote Control P.C.B. Assy	1	D1	205-5-9040-44210	Diode, DS 442	1		
	4-2262-24400	Remote Control P.C.B.	1	D2	205-5-9040-44210	Diode, DS 442	1		
CF1	4-2272-00330	Ceramic OSC	1	D3	4-2029-74120	L.E.D., SLP 939 B (Remote Signal)	1		
SW1	4-2312-05801	Keyboard Switch (Tuner)	1	D4	4-2029-74100	L.E.D., SE 303 A (Infrared Transmitter)	1		
SW2	4-2312-05801	Keyboard Switch (Power)	1	IC1	4-2069-74740	IC, TC 9148 P	1		
SW3	4-2312-05801	Keyboard Switch (Volume Up)	1	Q1	4-2039-72215	Transistor, 2SA 1115	1		
SW4	4-2312-05801	Keyboard Switch (Volume Down)	1	Q2	4-2039-72390	Transistor, 2SD 1468	1		
SW5	4-2312-05801	Keyboard Switch (Pause)	1	RESISTORS					
SW6	4-2312-05801	Keyboard Switch (Muting)	1	R1	RD1-0-2251-JM000	Carbon	1k Ω 1/4W \pm 5%	1	
	131-2-4208-47400	Spacer	1	R2	RD2-2-1251-JM000	Carbon	220 Ω 1/4W \pm 5%	1	
CAPACITORS				R3	RD1-0-A251-JM000	Carbon	1 Ω 1/4W \pm 5%	1	
C1	CD4-7-663A-0002V	Electrolytic	47 μ F 6.3V	1	R4	RD1-0-0251-JM000	Carbon	10 Ω 1/4W \pm 5%	1
C2	CC1-0-1500-KD00C	Ceramic	100pF 50V \pm 10%	1					
C3	CC1-0-1500-KD00C	Ceramic	100pF 50V \pm 10%	1					

NOTES:

- Parts order must contain Model Number, Part Number and Description.
- Ordering quantity of screws and resistors must be multiple of 10 pcs.

RECOMMENDED TEST EQUIPMENTS

The following test equipments are recommended to completely test and align the Amplifier:

- Line Voltage Isolation Transformer
- AC DC Multimeter
- Accurately Calibrated AC Voltmeter
- Oscilloscope (Flat to 100 kHz Minimum)
- Low-Distortion Audio Sine-Wave Generator
- Harmonic Distortion Analyzer
- Two (2) Load Resistors 8-ohms, 250 Watts (Minimum Rating)

HARMONIC DISTORTION TEST

CAUTION: Limit the following tests to no more than ten minutes each. Use 8-ohm resistors, with a minimum power rating of 250 watts when connecting a load across the SPEAKERS terminal.

CONTROL SETTINGS:

Unplug the AC power cord and set the front panel controls as follows:

- GRAPHIC EQUALIZER to center position.
- BALANCE control to center position.
- POWER switch to OFF
- SPEAKERS switch to OFF
- FUNCTION switch to AUX/VIDEO
- LOUDNESS switch to OFF
- VOLUME control to MINIMUM position
- LEFT CHANNEL DRIVEN

ONE CHANNEL DRIVEN:

- 1) Connect a low distortion audio generator to LEFT AUX IN jack. Set generator-frequency to 1 kHz and output to minimum.
- 2) Connect an 8-ohm load resistor between SPEAKERS SYSTEM-A LEFT and COM terminals. Connect a Harmonic Distortion Analyzer and an AC VTVM in parallel across the 8-ohm load.
- 3) Connect the AC power cord and set SPEAKERS switch to ON position. Press the VOLUME UP button to MAX.
- 4) Increase generator output for 100 Watts RMS (28.2 volts across the 8-ohm load). Harmonic Distortion Analyzer should measure 0.05 % distortion or less.
- 5) Repeat steps 1 through 4 for RIGHT CHANNEL.

BOTH CHANNELS DRIVEN

Connect 8-ohm load resistors across LEFT and RIGHT SPEAKERS SYSTEM-A terminals. Adjust generator output and "VOLUME" control for 100 watts at Left and Right Channels (28.2 volts across the 8-ohm loads). Harmonic Distortion Analyzer should measure 0.05 % distortion or less at each channel.

CAUTION: This precision high-fidelity instrument should be serviced only by qualified personnel, trained in the repair of transistor equipment and printed circuitry.

POWER AMPLIFIER ADJUSTMENT

BEFORE ADJUSTMENT

Unplug the AC power cord and set the front panel controls as follows:

- Power switch to the OFF position.
- Set the SPEAKERS switch to the OFF position.
- Press the MASTER VOLUME DOWN button to minimum position.
- IDLING CURRENT ADJUSTMENT VR401 and VR402 (on the Main P.C.Board) setting to minimum position.
- Connect the AC power cord and Power switch to the ON position.

IDLING CURRENT ADJUSTMENT

This adjustment is very sensitive to changes in ambient temperature. Allow set to operate for 5 minutes before attempting this adjustment.

LEFT CHANNEL AMPLIFIER

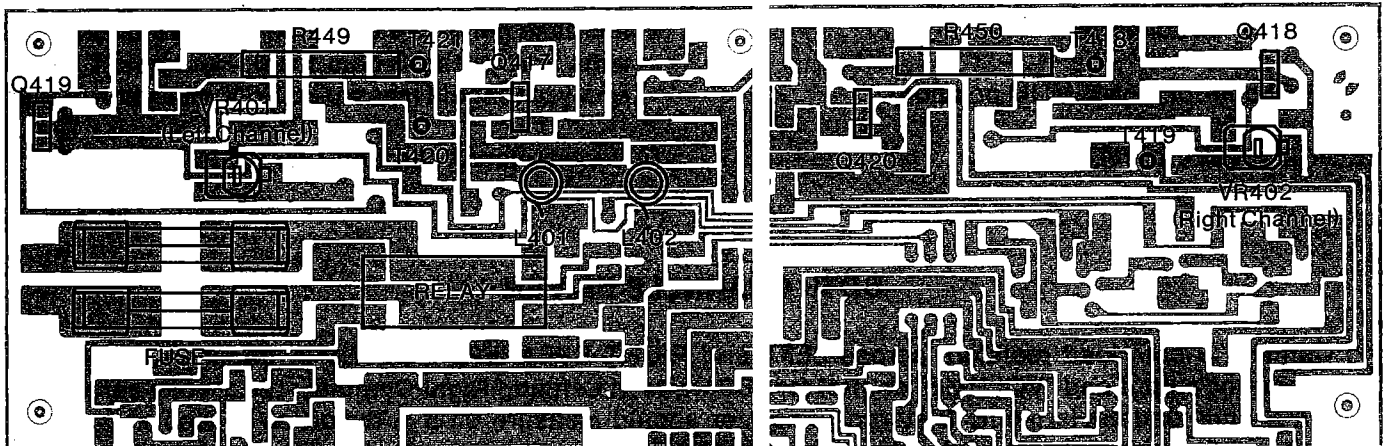
- 1) Connect the DC Voltmeter between Pins T420 and T421 on the Main P.C.Board.
- 2) Adjust the VR401 for an indication of 7mV (4mV ~ 10mV) on the DC Voltmeter.

RIGHT CHANNEL AMPLIFIER

- 1) Connect the DC Voltmeter between Pins T418 and T419 on the Main P.C.Board.
- 2) Adjust the VR402 for an indication of 7mV (4mV ~ 10mV) on the DC Voltmeter.

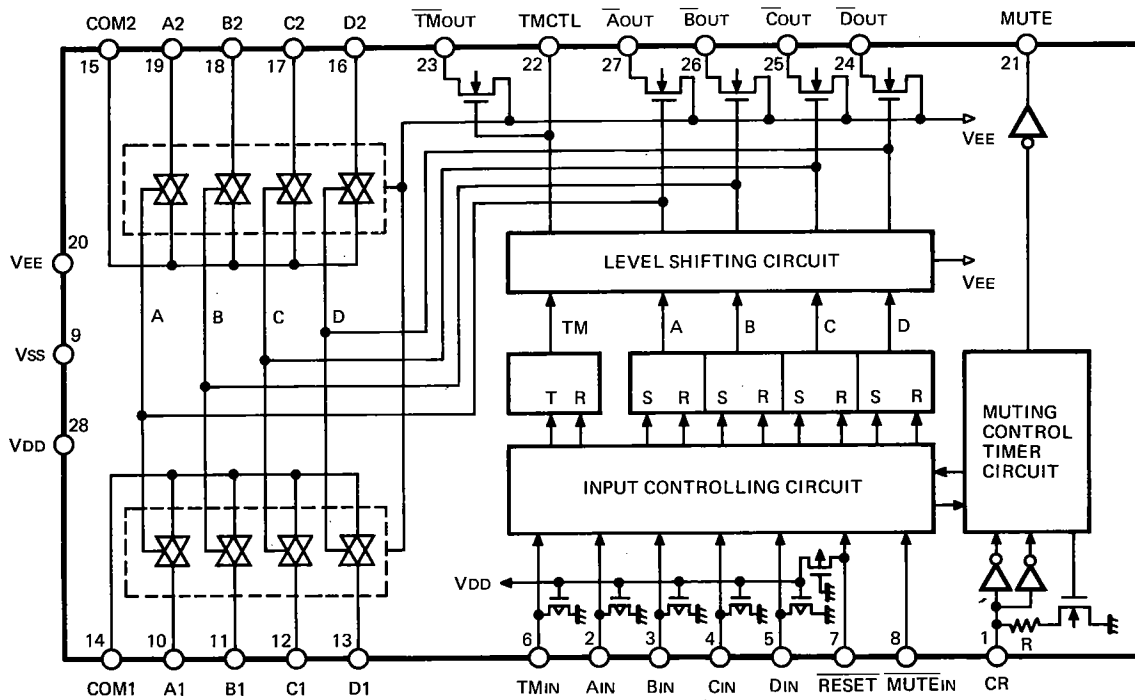
AMPLIFIER P.C.BOARD LAYOUT ALIGNMENT POINTS

(TOP VIEW)

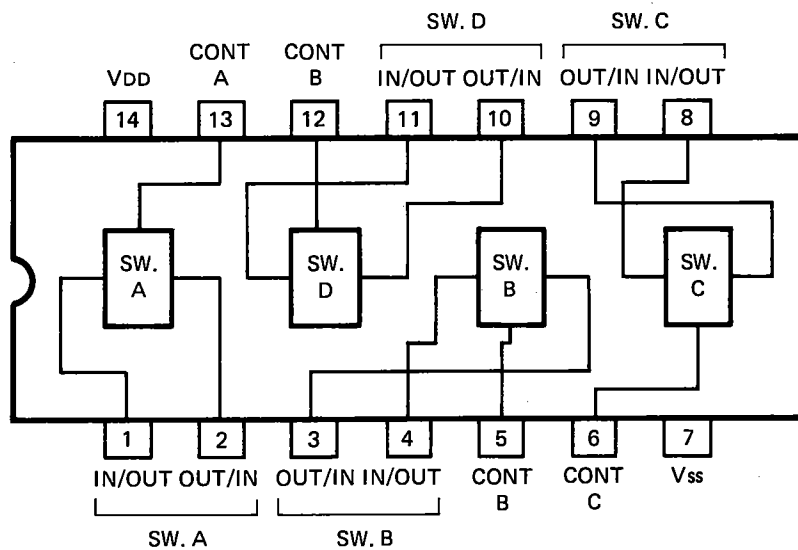


INTEGRATED CIRCUIT BLOCK DIAGRAM

FUNCTION ANALOG SWITCH IC LC 7815 H

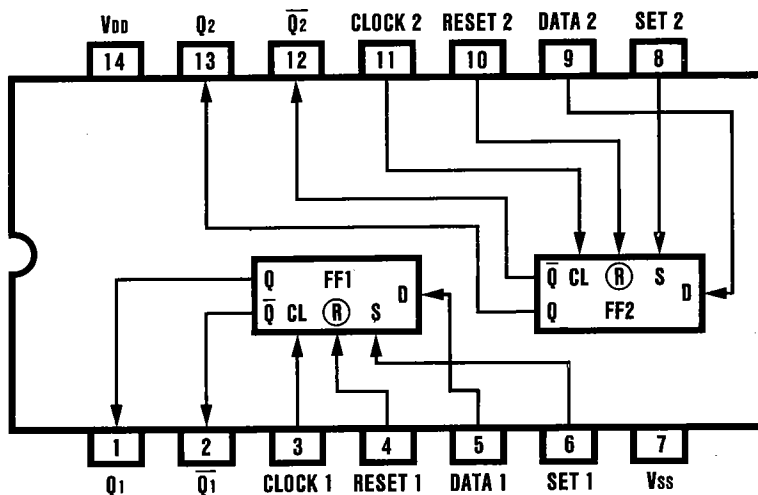


TAPE INPUT ANALOG SWITCH IC LC 4066 B

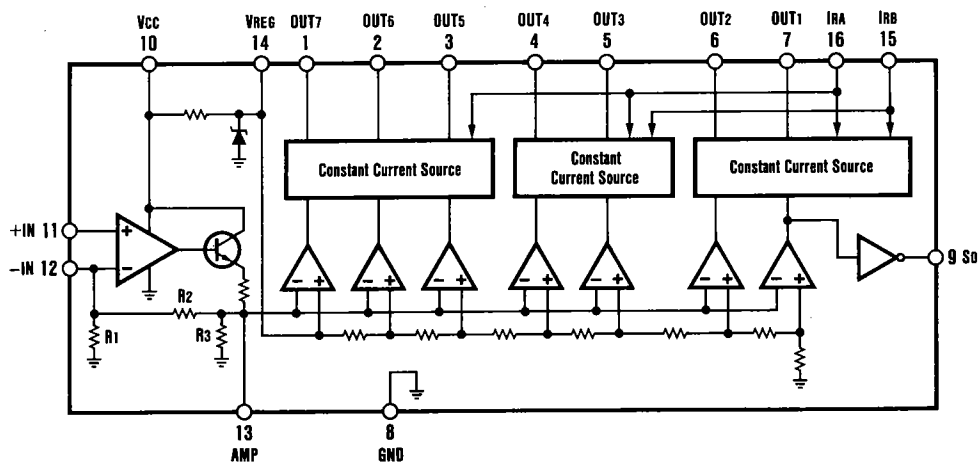


INTEGRATED CIRCUIT BLOCK DIAGRAM (Continued)

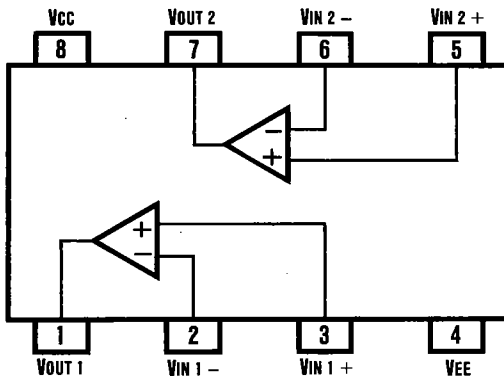
POWER ON/OFF MUTING IC LC 4913 B



LED METER DRIVE AMP IC IR 2E29

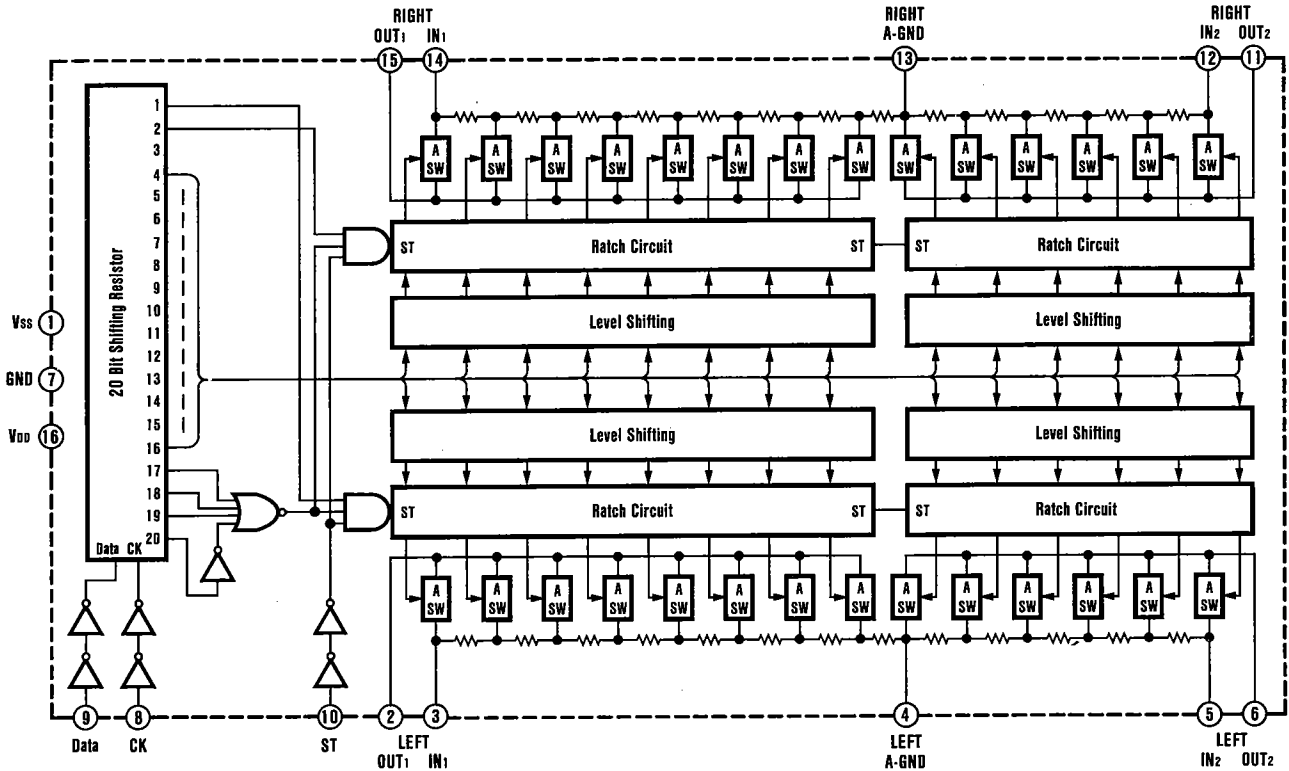


PHONO / GRAPHIC EQUALIZER AMP IC LA 6458 D

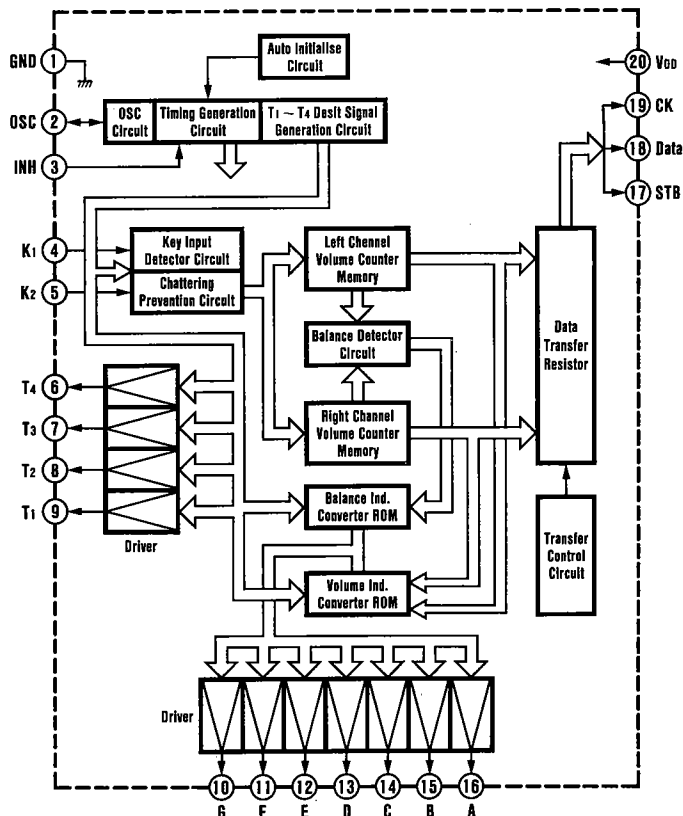


INTEGRATED CIRCUIT BLOCK DIAGRAM (Continued)

ELECTRONIC VOLUME (with Loudness) IC TC 9177 P

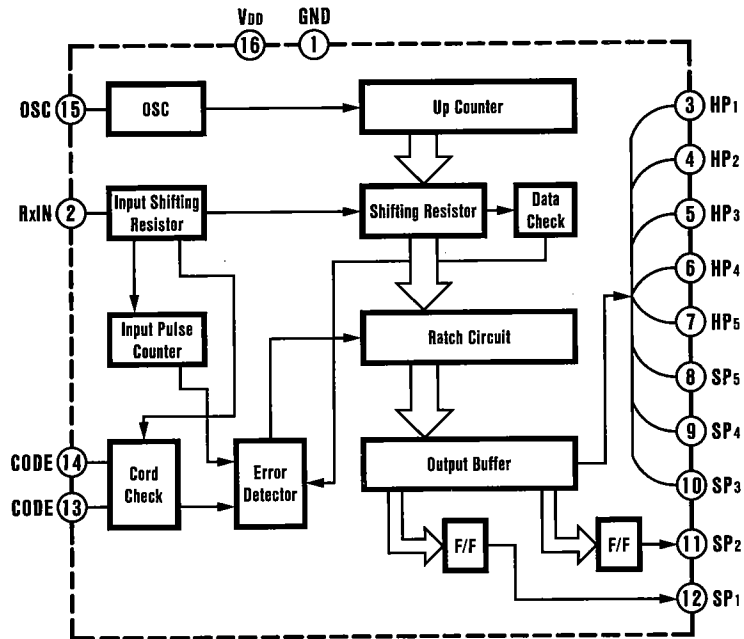


ELECTRONIC VOLUME CONTROL IC TC 9185 P

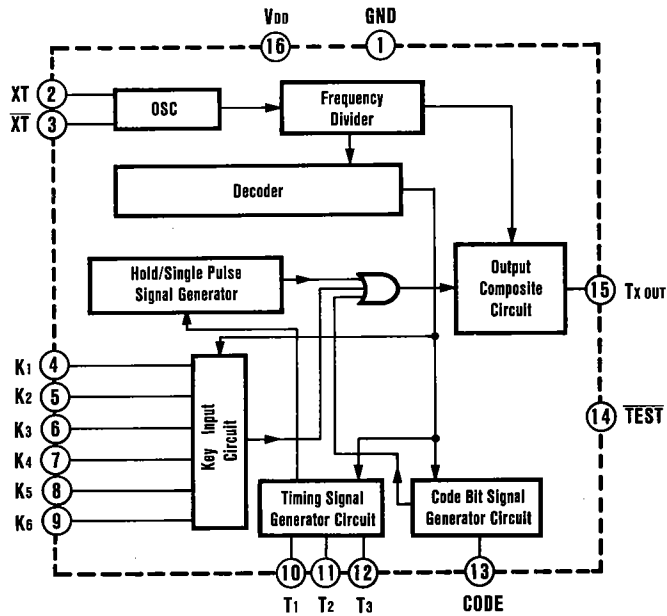


INTEGRATED CIRCUIT BLOCK DIAGRAM (Continued)

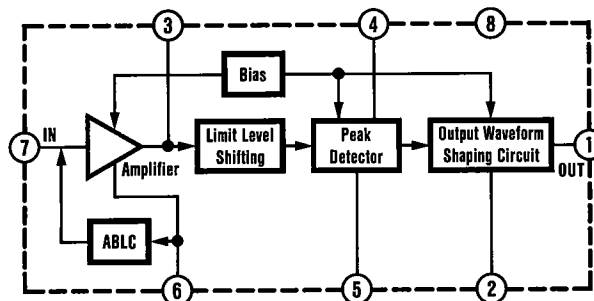
REMOTE CONTROL RECEIVER IC TC 9149 P



REMOTE CONTROL TRANSMITTER IC TC 9148 P



REMOTE CONTROL PRE AMP IC μ PC 1473 HA



P.C.BOARD PARTS LIST

Ref. No.	Part No.	Description	Q'ty	Ref. No.	Part No.	Description	Q'ty	
INPUT P.C.B. ASSY				R110	RD2-2-4161-JH000	Carbon	220kΩ 1/6W ±5% 1	
46	141-0-1939-11600	Input P.C.B. Assy	1	R111	RD1-5-3161-JH000	Carbon	15kΩ 1/6W ±5% 1	
	4-2262-24410	Input P.C.B.	1	R112	RD1-5-3161-JH000	Carbon	15kΩ 1/6W ±5% 1	
	4-2352-01700	Pin Jack 4P (Phono, Tuner)	1	R113	RD1-0-4161-JH000	Carbon	100kΩ 1/6W ±5% 1	
	4-2352-01700	Pin Jack 4P (CD, Aux/Video)	1	R114	RD1-0-4161-JH000	Carbon	100kΩ 1/6W ±5% 1	
	4-2352-01700	Pin Jack 4P (Tape)	1	R115	RD1-0-2161-JH000	Carbon	1kΩ 1/6W ±5% 1	
A	4-2369-74300	Plug 10P	1	R116	RD1-0-2161-JH000	Carbon	1kΩ 1/6W ±5% 1	
B	4-2362-00900	Plug 8P	1	R117	RD1-0-2251-JM000	Carbon	1kΩ 1/4W ±5% 1	
C	4-2369-73160	Connector 6P	1	R118	RD1-0-2251-JM000	Carbon	1kΩ 1/4W ±5% 1	
	141-2-3229-44600	Plate Shield	1	R119	RD1-0-2161-JH000	Carbon	1kΩ 1/6W ±5% 1	
CAPACITORS				R120	RD1-0-2161-JH000	Carbon	1kΩ 1/6W ±5% 1	
C103	CC2-2-1500-KE00C	Ceramic	220pF 50V ±10%	1	R121	RD1-0-2161-JH000	Carbon	1kΩ 1/6W ±5% 1
C104	CC2-2-1500-KE00C	Ceramic	220pF 50V ±10%	1	R122	RD1-0-2161-JH000	Carbon	1kΩ 1/6W ±5% 1
C105	CD4-7-5250-0001V	Electrolytic	4.7μF 25V	1	R123	RD1-0-2161-JH000	Carbon	1kΩ 1/6W ±5% 1
C106	CD4-7-5250-0001V	Electrolytic	4.7μF 25V	1	R124	RD1-0-2161-JH000	Carbon	1kΩ 1/6W ±5% 1
C107	CC2-2-1500-KE00C	Ceramic	220pF 50V ±10%	1	R125	RD1-0-2161-JH000	Carbon	1kΩ 1/6W ±5% 1
C108	CC2-2-1500-KE00C	Ceramic	220pF 50V ±10%	1	R126	RD1-0-2161-JH000	Carbon	1kΩ 1/6W ±5% 1
C109	CD4-7-6160-0001V	Electrolytic	47μF 16V	1	R127	RD1-0-2161-JH000	Carbon	1kΩ 1/6W ±5% 1
C110	CD4-7-6160-0001V	Electrolytic	47μF 16V	1	R128	RD1-0-2161-JH000	Carbon	1kΩ 1/6W ±5% 1
C111	CM1-8-3500-K00SV	Mylar	0.018μF 50V ±10%	1	R129	RD1-8-4161-JH000	Carbon	180kΩ 1/6W ±5% 1
C112	CM1-8-3500-K00SV	Mylar	0.018μF 50V ±10%	1	R130	RD1-8-4161-JH000	Carbon	180kΩ 1/6W ±5% 1
C113	CM4-7-2500-K00SV	Mylar	0.0047μF 50V ±10%	1	R131	RD1-8-4161-JH000	Carbon	180kΩ 1/6W ±5% 1
C114	CM4-7-2500-K00SV	Mylar	0.0047μF 50V ±10%	1	R132	RD1-8-4161-JH000	Carbon	180kΩ 1/6W ±5% 1
C115	CD4-7-5250-0001V	Electrolytic	4.7μF 25V	1	R133	RD1-8-4161-JH000	Carbon	180kΩ 1/6W ±5% 1
C116	CD4-7-5250-0001V	Electrolytic	4.7μF 25V	1	R134	RD1-8-4161-JH000	Carbon	180kΩ 1/6W ±5% 1
C117	CC2-2-1500-KE00C	Ceramic	220pF 50V ±10%	1	R135	RD1-8-4161-JH000	Carbon	180kΩ 1/6W ±5% 1
C118	CC2-2-1500-KE00C	Ceramic	220pF 50V ±10%	1	R136	RD1-8-4161-JH000	Carbon	180kΩ 1/6W ±5% 1
C119	CD4-7-6160-0006V	Electrolytic	47μF 16V	1	R137	RD8-2-3161-JH000	Carbon	82kΩ 1/6W ±5% 1
C120	CD4-7-6160-0006V	Electrolytic	47μF 16V	1	R138	RD8-2-3161-JH000	Carbon	82kΩ 1/6W ±5% 1
C121	CD2-2-5500-0001V	Electrolytic	2.2μF 50V	1	R139	RD2-2-4161-JH000	Carbon	220kΩ 1/6W ±5% 1
C122	CD1-0-4500-0001V	Electrolytic	0.1μF 50V	1	R140	RD5-6-3161-JH000	Carbon	56kΩ 1/6W ±5% 1
C123	CD4-7-6160-0006V	Electrolytic	47μF 16V	1	R141	RD1-8-1251-JM000	Carbon	180Ω 1/4W ±5% 1
C124	CD4-7-6160-0006V	Electrolytic	47μF 16V	1	R142	RD1-8-1251-JM000	Carbon	180Ω 1/4W ±5% 1
C125	CD1-0-8160-0001V	Electrolytic	1000μF 16V	1	R143	RD2-7-2161-JH000	Carbon	2.7kΩ 1/6W ±5% 1
C126	CD1-0-5500-0001V	Electrolytic	1μF 50V	1	R144	RD1-0-3161-JH000	Carbon	10kΩ 1/6W ±5% 1
C127	CD4-7-5250-0001V	Electrolytic	4.7μF 25V	1	R145	RD2-2-2161-JH000	Carbon	2.2kΩ 1/6W ±5% 1
C128	CD4-7-5250-0001V	Electrolytic	4.7μF 25V	1	R146	RD1-8-1251-JM000	Carbon	180Ω 1/4W ±5% 1
C129	CD4-7-5250-0001V	Electrolytic	4.7μF 25V	1	R147	RD1-8-3161-JH000	Carbon	18kΩ 1/6W ±5% 1
C130	CD4-7-5250-0001V	Electrolytic	4.7μF 25V	1	R148	RD1-8-3161-JH000	Carbon	18kΩ 1/6W ±5% 1
SEMICONDUCTORS				R149	RD4-7-3161-JH000	Carbon	47kΩ 1/6W ±5% 1	
D101	205-5-9040-44210	Diode, DS 442	1	R151	RD1-5-4161-JH000	Carbon	150kΩ 1/6W ±5% 1	
D102	202-5-3160-00110	Diode, GMA 01	1	R152	RD1-5-4161-JH000	Carbon	150kΩ 1/6W ±5% 1	
D103	202-5-3160-00110	Diode, GMA 01	1	R153	RD4-7-2161-JH000	Carbon	4.7kΩ 1/6W ±5% 1	
D104	205-5-9040-44210	Diode, DS 442	1	R154	RD4-7-2161-JH000	Carbon	4.7kΩ 1/6W ±5% 1	
IC101	206-5-2726-45810	IC, LA 6458 DS	1	R155	RD1-0-2161-JH000	Carbon	1kΩ 1/6W ±5% 1	
IC102	206-5-8897-81520	IC, LC 7815 MG	1	R156	RD1-0-2161-JH000	Carbon	1kΩ 1/6W ±5% 1	
IC103	206-5-8144-06610	IC, LC 4066 BH	1	FUNCTION P.C.B. ASSY				
Q101	203-5-5000-53670	Transistor, 2SC 536	1	47	141-0-1939-11610	Function P.C.B. Assy	1	
Q102	203-5-7230-60870	Transistor, 2SA 608	1		4-2262-24420	Function P.C.B.	1	
Q103	203-5-5000-53670	Transistor, 2SC 536	1	SW201	4-2312-05300	Keyboard Switch 6mm (Phono)	1	
Q104	203-5-5000-53670	Transistor, 2SC 536	1	SW202	4-2312-05300	Keyboard Switch 6mm (Tuner)	1	
				SW203	4-2312-05300	Keyboard Switch 6mm (Compact Disc)	1	
				SW204	4-2312-05300	Keyboard Switch 6mm (Aux/Video)	1	
				SW205	4-2312-05300	Keyboard Switch 6mm (Tape Monitor)	1	
				L201	4-2599-71300	RF Coil (5.6mH)	1	
				B	131-0-4006-31422	Cord Assy	1	
				C	131-0-4006-31408	Cord Assy	1	
					131-2-4208-28000	Spacer	6	
					131-2-5205-33700	Cushion	1	
					141-2-3229-54500	Cover Shield	1	
R101	RD1-0-2161-JH000	Carbon	1kΩ 1/6W ±5%	1				
R102	RD1-0-2161-JH000	Carbon	1kΩ 1/6W ±5%	1				
R103	RD1-0-4161-JH000	Carbon	100kΩ 1/6W ±5%	1				
R104	RD1-0-4161-JH000	Carbon	100kΩ 1/6W ±5%	1				
R105	RD1-0-4161-JH000	Carbon	100kΩ 1/6W ±5%	1				
R106	RD1-0-4161-JH000	Carbon	100kΩ 1/6W ±5%	1				
R107	RD3-3-1161-JH000	Carbon	330Ω 1/6W ±5%	1				
R108	RD3-3-1161-JH000	Carbon	330Ω 1/6W ±5%	1				
R109	RD2-2-4161-JH000	Carbon	220kΩ 1/6W ±5%	1				

P.C. BOARD PARTS LIST (Continued)

Ref. No.	Part No.	Description	Q'ty	Ref. No.	Part No.	Description	Q'ty
CAPACITORS							
C201	CD1-0-6160-0002V	Electrolytic 10μF 16V	1	D	131-0-4006-31403	Cord Assy	1
C202	CD4-7-5250-0002V	Electrolytic 4.7μF 25V	1	E	4-2359-78774	Connector 7P Assy	1
C203	CD1-0-6160-0002V	Electrolytic 10μF 16V	1	F	131-0-4006-31419	Cord Assy	1
C204	CM3-3-2500-J00BV	Mylar 0.0033μF 50V ±5%	1	G	131-0-4006-31412	Cord Assy	1
C205	CM3-3-3500-J00TV	Mylar 0.033μF 50V ±5%	1	H	4-2359-78726	Connector 2P Assy	1
C206	CD4-7-663A-0002V	Electrolytic 47μF 6.3V	1		141-2-2419-34300	Mount LED	1
C207	CI1-0-3250-MF00R	Boundary 0.01μF 25V ±20%	1		141-2-3229-54600	Cover Shield	2
C208	CI1-0-3250-MF00R	Boundary 0.01μF 25V ±20%	1		141-2-3769-18600	Spacer LED	1
C209	CI1-0-3250-MF00R	Boundary 0.01μF 25V ±20%	1	CAPACITORS			
C210	CI1-0-3250-MF00R	Boundary 0.01μF 25V ±20%	1	C301	CC1-0-1500-KE01R	Ceramic 100pF 50V ±10%	1
C211	CI1-0-3250-MF00R	Boundary 0.01μF 25V ±20%	1	C302	CC1-0-1500-KE01R	Ceramic 100pF 50V ±10%	1
SEMICONDUCTORS				C303	CC6-8-0500-JD01R	Ceramic 68pF 50V ±5%	1
D201	4-2029-74090	Photo Diode, PH 309	1	C304	CC6-8-0500-JD01R	Ceramic 68pF 50V ±5%	1
D202	DYY---SLR--54VT-	L.E.D., SLR 54 VT (Power/Standby)	1	C305	CC1-0-0500-JD01R	Ceramic 10pF 50V ±5%	1
D203	DYY---SLR--54PT-	L.E.D., SLR 54 PT (Phono)	1	C306	CC1-0-0500-JD01R	Ceramic 10pF 50V ±5%	1
D204	DYY---SLR--54PT-	L.E.D., SLR 54 PT (Tuner)	1	C307	CD1-0-6160-0002V	Electrolytic 10μF 16V	1
D205	DYY---SLR--54PT-	L.E.D., SLR 54 PT (Compact Disc)	1	C308	CD1-0-6160-0002V	Electrolytic 10μF 16V	1
D206	DYY---SLR--54PT-	L.E.D., SLR 54 PT (Aux/Video)	1	C309	CD4-7-5250-0002V	Electrolytic 4.7μF 25V	1
D207	DYY---SLR--54VT-	L.E.D., SLR 54 VT (Tape Monitor)	1	C310	CD4-7-5250-0002V	Electrolytic 4.7μF 25V	1
D208	202-5-3210-10011	Zener Diode, GZA 10 X	1	C311	CC3-3-1500-KE01R	Ceramic 330pF 50V ±10%	1
D209	202-5-3210-10011	Zener Diode, GZA 10 X	1	C312	CC3-3-1500-KE01R	Ceramic 330pF 50V ±10%	1
D210	205-5-9040-44210	Diode, DS 442	1	C313	CD4-7-6250-0002V	Electrolytic 47μF 25V	1
D211	205-5-9040-44210	Diode, DS 442	1	C314	CD4-7-6250-0002V	Electrolytic 47μF 25V	1
D212	205-5-9040-44210	Diode, DS 442	1	C315	CD2-2-5500-0002V	Electrolytic 2.2μF 50V	1
D213	205-5-9040-44210	Diode, DS 442	1	C316	CD2-2-5500-0002V	Electrolytic 2.2μF 50V	1
D214	205-5-9040-44210	Diode, DS 442	1	C317	CD3-3-4500-0002V	Electrolytic 0.33μF 50V	1
D215	205-5-9040-44210	Diode, DS 442	1	C318	CD3-3-4500-0002V	Electrolytic 0.33μF 50V	1
IC201	4-2069-74780	IC, μPC 1473 HA	1	C319	CM8-2-3500-J00TV	Mylar 0.082μF 50V ±5%	1
Q201	203-5-5000-53670	Transistor, 2SC 536	1	C320	CM8-2-3500-J00TV	Mylar 0.082μF 50V ±5%	1
Q202	203-5-5000-53670	Transistor, 2SC 536	1	C321	CM2-2-3500-J00BV	Mylar 0.022μF 50V ±5%	1
RESISTORS				C322	CM2-2-3500-J00BV	Mylar 0.022μF 50V ±5%	1
R201	RD1-0-2161-JH000	Carbon 1kΩ 1/6W ±5%	1	C323	CM4-7-2500-J00BV	Mylar 0.0047μF 50V ±5%	1
R202	RD2-2-0161-JH000	Carbon 22Ω 1/6W ±5%	1	C324	CM4-7-2500-J00BV	Mylar 0.0047μF 50V ±5%	1
R204	RD1-5-3161-JH000	Carbon 15kΩ 1/6W ±5%	1	C325	CM1-8-3500-J00BV	Mylar 0.018μF 50V ±5%	1
R205	RD1-0-4161-JH000	Carbon 100kΩ 1/6W ±5%	1	C326	CM1-8-3500-J00BV	Mylar 0.018μF 50V ±5%	1
R206	RD1-0-3161-JH000	Carbon 10kΩ 1/6W ±5%	1	C327	CM8-2-2500-J00BV	Mylar 0.0082μF 50V ±5%	1
R207	RD4-7-0161-JH000	Carbon 47Ω 1/6W ±5%	1	C328	CM8-2-2500-J00BV	Mylar 0.0082μF 50V ±5%	1
R208	RD3-9-1161-JH000	Carbon 390Ω 1/6W ±5%	1	C329	CM4-7-2500-J00BV	Mylar 0.0047μF 50V ±5%	1
R209	RD5-6-1251-JM000	Carbon 560Ω 1/4W ±5%	1	C330	CM4-7-2500-J00BV	Mylar 0.0047μF 50V ±5%	1
R210	RD1-2-2251-JM000	Carbon 1.2kΩ 1/4W ±5%	1	C331	CM1-5-2500-J00BV	Mylar 0.0015μF 50V ±5%	1
R211	RD1-0-3251-JM000	Carbon 10kΩ 1/4W ±5%	1	C332	CM1-5-2500-J00BV	Mylar 0.0015μF 50V ±5%	1
R212	RD1-0-2251-JM000	Carbon 1kΩ 1/4W ±5%	1	C333	CC6-8-1500-KD00C	Ceramic 680pF 50V ±10%	1
R213	RD2-2-3161-JH000	Carbon 22kΩ 1/6W ±5%	1	C334	CC6-8-1500-KD00C	Ceramic 680pF 50V ±10%	1
R214	RD1-0-3161-JH000	Carbon 10kΩ 1/6W ±5%	1	C335	CD1-0-6250-0002V	Electrolytic 10μF 25V	1
R215	RD4-7-2251-JM000	Carbon 4.7kΩ 1/4W ±5%	1	C336	CD1-0-6250-0002V	Electrolytic 10μF 25V	1
GRAPHIC EQUALIZER P.C.B. ASSY				C337	CD1-0-6250-0002V	Electrolytic 10μF 25V	1
48	141-0-1939-11620	Graphic Equalizer P.C.B. Assy	1	C338	CD1-0-6250-0002V	Electrolytic 10μF 25V	1
	4-2262-24430	Graphic Equalizer P.C.B.	1	C339	CD1-0-6250-0002V	Electrolytic 10μF 25V	1
VR301	4-2229-75990	Slide Volume (W-250kΩx2, 63Hz)	1	C340	CD1-0-6250-0002V	Electrolytic 10μF 25V	1
VR302	4-2229-75990	Slide Volume (W-250kΩx2, 250Hz)	1	C341	CD1-0-6250-0002V	Electrolytic 10μF 25V	1
VR303	4-2229-75990	Slide Volume (W-250kΩx2, 1kHz)	1	C342	CD1-0-5500-0002V	Electrolytic 1μF 50V	1
VR304	4-2229-75990	Slide Volume (W-250kΩx2, 4kHz)	1	C343	CM1-0-2500-J00BV	Mylar 0.001μF 50V ±5%	1
VR305	4-2229-75990	Slide Volume (W-250kΩx2, 16kHz)	1	C344	CC2-2-1500-KE01R	Ceramic 220pF 50V ±10%	1
VR306	4-2229-75980	Slide Volume (W-200kΩ, Balance)	1	C345	CD2-2-763A-0006V	Electrolytic 220μF 6.3V	1
SW301	4-2319-78470	Tact Switch (Volume Up)	1	C346	CD4-7-663A-0002V	Electrolytic 47μF 6.3V	1
SW302	4-2319-78470	Tact Switch (Volume Down)	1	SEMICONDUCTORS			
SW303	4-2319-78450	Tact Switch With/LED (Loudness)	1	D301	D00---SLP--273B-	L.E.D., SLP 273 B (Power Level Meter)	1
SW304	4-2319-78450	Tact Switch With/LED (Muting)	1	D302	D00---SLP--273B-	L.E.D., SLP 273 B (Power Level Meter)	1
SW305	4-2319-78460	Tact Switch (Standby ON)	1	D303	D00---SLP--273B-	L.E.D., SLP 273 B (Power Level Meter)	1
A	4-2359-78773	Connector 10P Assy	1	D304	D00---SLP--273B-	L.E.D., SLP 273 B (Power Level Meter)	1
				D305	D00---SLP--273B-	L.E.D., SLP 273 B (Power Level Meter)	1
				D306	D00---SLP--273B-	L.E.D., SLP 273 B (Power Level Meter)	1

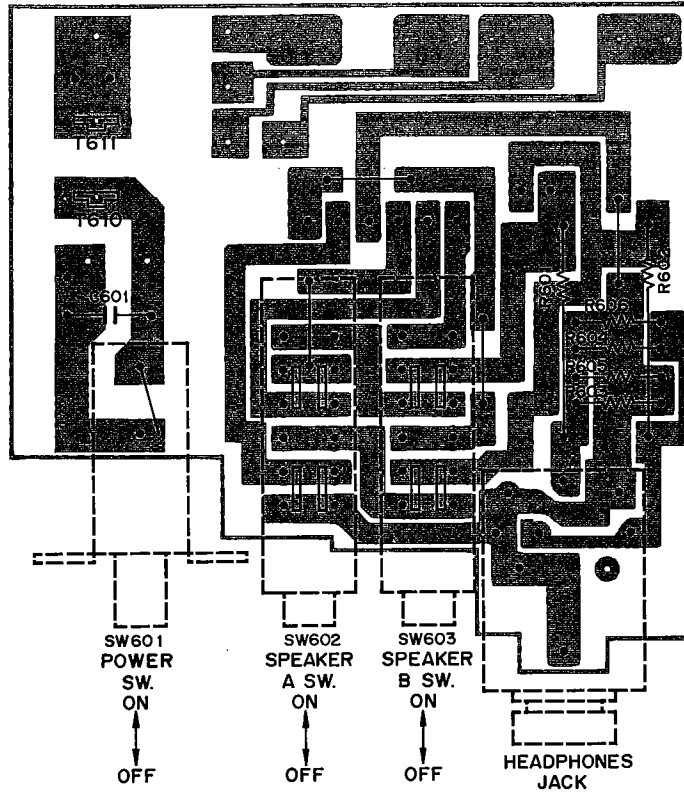
P.C.BOARD PARTS LIST (Continued)

Ref. No.	Part No.	Description	Q'ty	Ref. No.	Part No.	Description	Q'ty
	4-2439-72195	Wire 6 Parallel	1		2ND OUTLET P.C.B. ASSY		
	131-2-6114-00200	Cover Safety	1	53	141-0-1939-11670	2nd Outlet P.C.B. Assy	1
	CAPACITOR				4-2262-24480	2nd Outlet P.C.B.	1
C601	△ CC1-0-3501-YEY0C	Ceramic	0.01μF 500V +100,-0%		△ 4-2342-00010	Fuse 1.0A	2
	RESISTORS				4-2352-01160	Jack 3P (Remote Control for Deck)	1
R601	RH5-6-1202-JZ000	Metal	560Ω 2W ±5%		4-2359-23000	Fuse Holder	4
R602	RH5-6-1202-JZ000	Metal	560Ω 2W ±5%		△ 4-2359-78840	DIN Socket 4P (Power Supply)	1
R603	RD2-2-1251-JM000	Carbon	220Ω 1/4W ±5%	H	4-2362-00770	Plug 2P	1
R604	RD2-2-1251-JM000	Carbon	220Ω 1/4W ±5%		111-2-6220-11100	Wire Wrap Terminal	4
R605	RD2-7-1251-JM000	Carbon	270Ω 1/4W ±5%		AC OUTLET P.C.B. ASSY		
R606	RD2-7-1251-JM000	Carbon	270Ω 1/4W ±5%	54	141-0-1939-11680	AC Outlet P.C.B. Assy	1
	SPEAKER OUT P.C.B. ASSY				4-2262-24490	AC Outlet P.C.B.	1
51	141-0-1939-11650	Speaker Out P.C.B. Assy	1		RESISTOR		
	4-2262-24460	Speaker Out P.C.B.	1	R901	RC3-9-5501-KH002	Carbon	3.9MΩ 1/2W ±10%
	4-2372-01160	Speaker 8P Terminal (Speakers)	1		NOTES:		
	TRANSISTOR P.C.B. ASSY				1. Parts order must contain Model Number, Part Number and Description.		
52	141-0-1939-11660	Transistor P.C.B. Assy	2		2. Ordering quantity of screws and resistors must be multiple of 10 pcs.		
	4-2262-24470	Transistor P.C.B.	1				
	SEMICONDUCTORS						
D501	205-5-9040-44210	Diode, DS 442	1				
Q501	4-2039-72100	Transistor, 2SD 947	1				

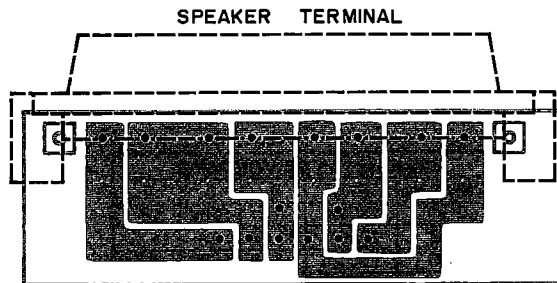
PRODUCT SAFETY NOTICE

Each precaution in this manual should be followed during servicing. Components identified with the IEC symbol in the parts list and the schematic diagram designate components in which safety can be of special significance. When replacing a component identified with , use only the replacement parts designated, or parts with the same ratings of resistance, wattage or voltage that are designated in the parts list in this manual. Leakage-current or resistance measurements must be made to determine that exposed parts are acceptably insulated from the supply circuit before returning the product to the customer.

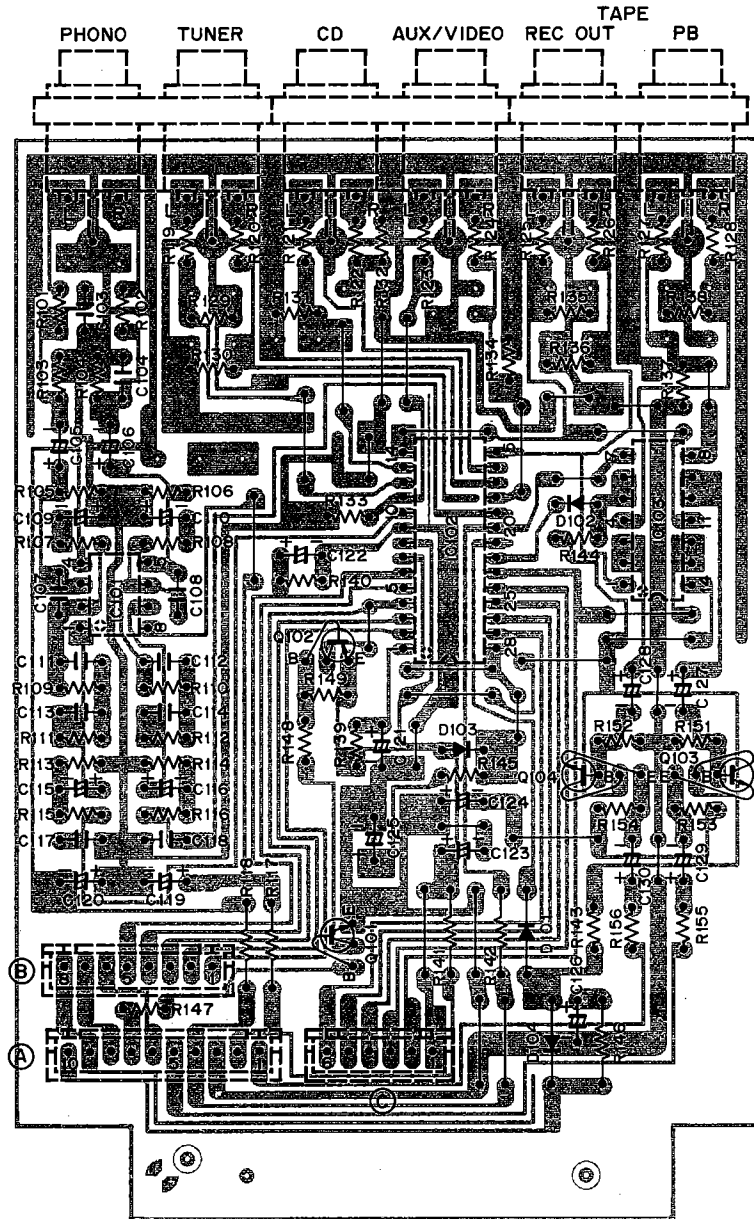
POWER SWITCH P.C.BOARD (BOTTOM VIEW)



SPEAKER OUT P.C.BOARD (BOTTOM VIEW)



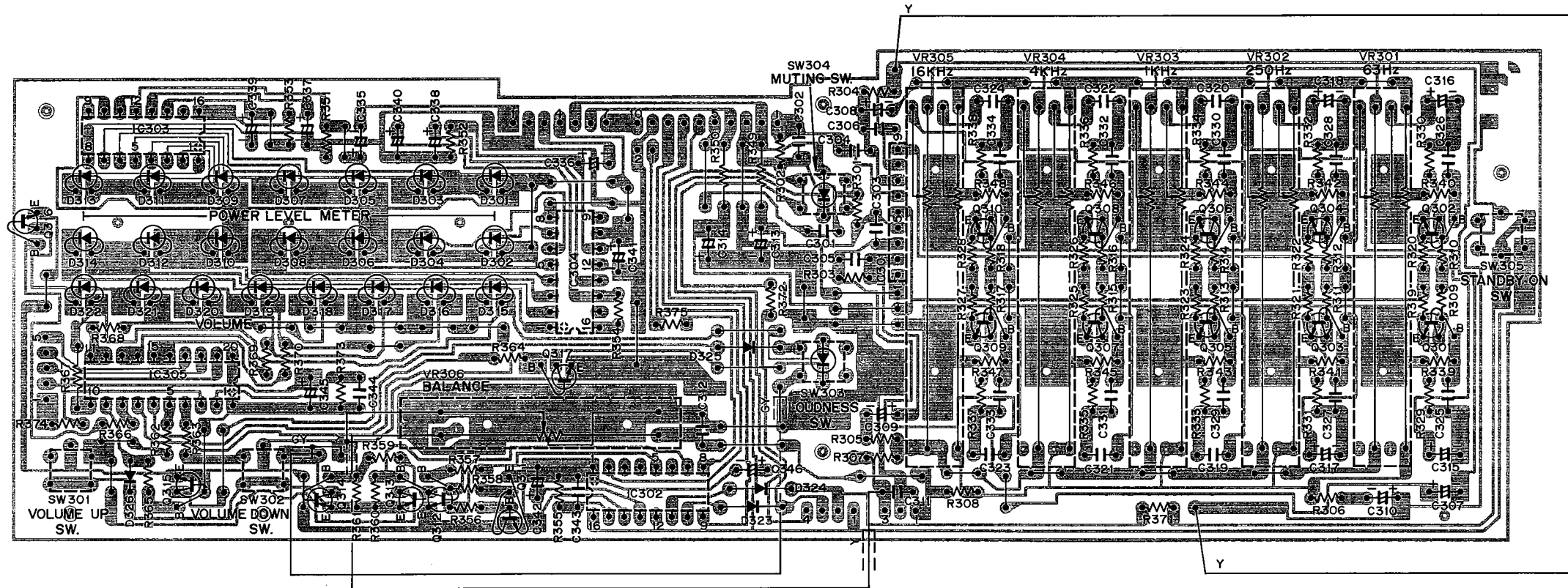
INPUT PRINTED CIRCUIT BOARD (BOTTOM VIEW)



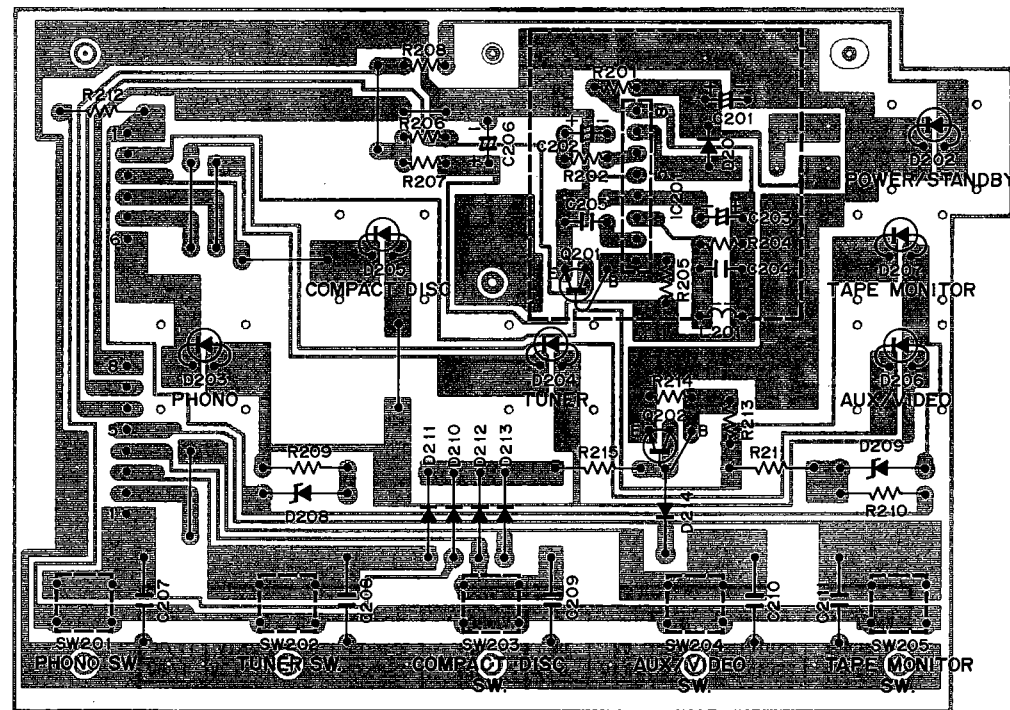
TRANSISTOR DC VOLTAGES				
SYMBOL No.	DEVICE	B	C	E
Q101	2SC536	0V	10.0V	0V
Q102	2SA608	11.1V	0V	11.3V
Q103	2SC536	-0.3V	11.3V	-0.2V
Q104	2SC536	-0.5V	11.3V	-1.6V

IC PIN NUMBERS DC VOLTAGES																					
SYMBOL No.	DEVICE	1	2	3	4	5	6	7	8	9	10	11	12	13	14	15	16	17	18	19	20
IC101	LA6458D	0V	0V	0V	-12.3V	0V	0V	0V	12.7V												
IC102	LC7815	7.3V	0V	0V	0V	0V	0V	10.8V	11.2V	0V	0V	0V	0V	0V	0V	0V	0V	0V	0V	0V	0V
		21	22	23	24	25	26	27	28												
		0.8V	-10.2V	10.2V	0.6V	0.5V	-11.3V	10.9V	10.8V												
IC103	LC4066	0V	0V	0V	0V	-9.5V	-9.5V	-11.5V	0V	0V	0V	0V	11.2V	11.2V	11.3V						

GRAPHIC EQUALIZER P.C.BOARD (BOTTOM VIEW)



FUNCTION P.C.BOARD (BOTTOM VIEW)

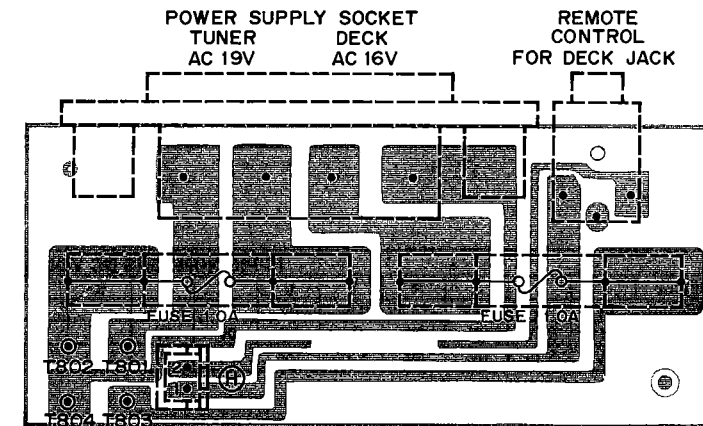


IC PIN NUMBERS DC VOLTAGES									
SYMBOL No.	DEVICE	1	2	3	4	5	6	7	8
IC201	μPC1472	0.6V	1.1V	5.0V	3.7V	0V	0.7V	1.3V	5.0V

TRANSISTOR DC VOLTAGES									
SYMBOL No.	DEVICE	B	C	E	SYMBOL No.	DEVICE	B	C	E
Q301,302	2SC536	-1.4V	15.4V	-2.1V	Q312	2SC536	0V	6.1V	0V
Q303,304	2SC536	-1.1V	15.4V	-1.7V	Q313	2SA608	6.1V	0V	6.1V
Q305,306	2SC536	-0.3V	15.4V	-1.0V	Q314	2SA608	6.1V	0V	6.1V
Q307,308	2SC536	-0.3V	15.4V	-1.0V	Q315	2SC536	0.2V	1.5V	0V
Q309,310	2SC536	-0.2V	15.4V	-0.8V	Q316	2SC536	0.2V	1.9V	0V
Q311	2SC536	0V	6.1V	0V	Q317	2SC536	0V	1.1V	0V

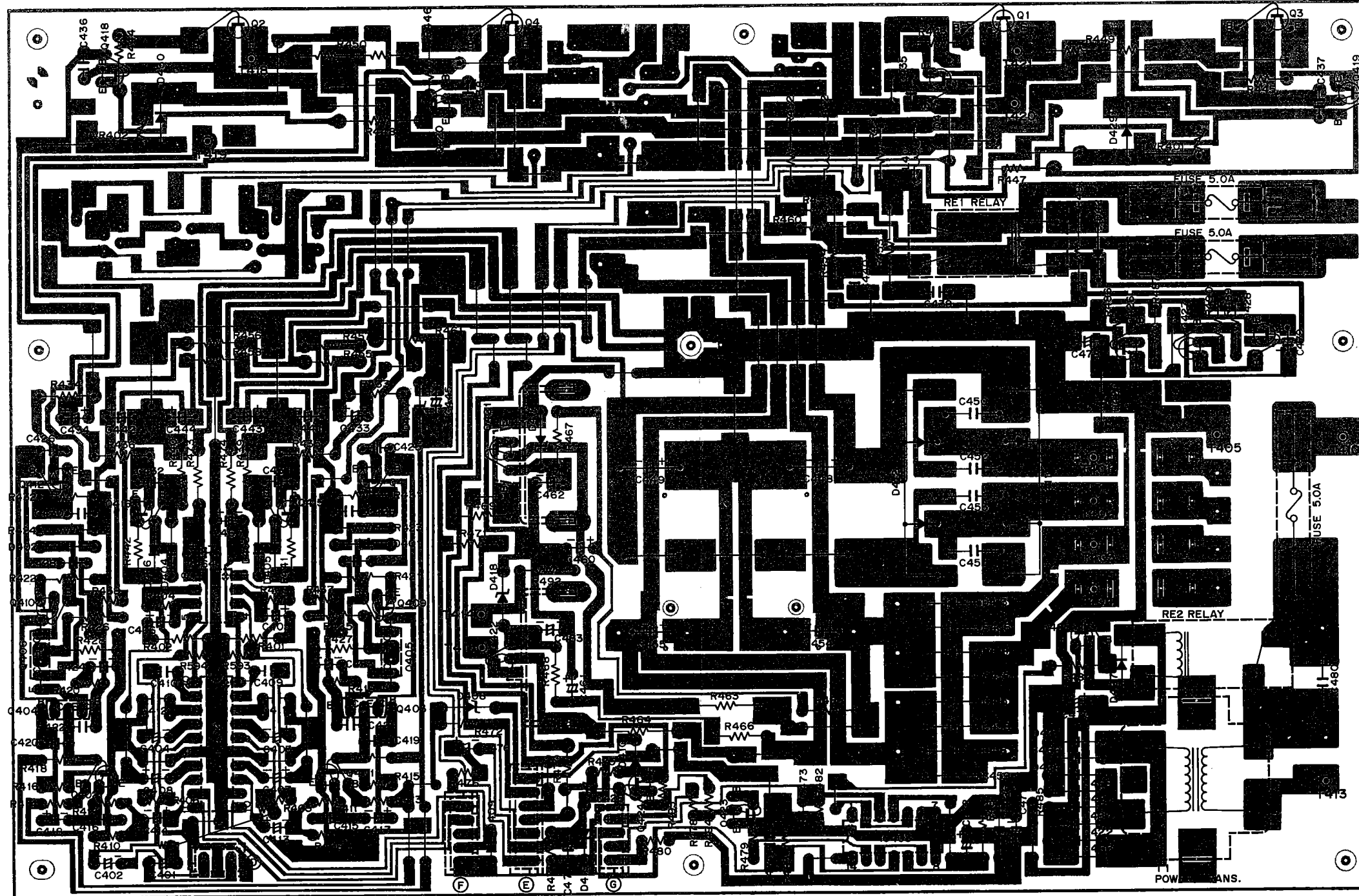
IC PIN NUMBERS DC VOLTAGES																					
SYMBOL No.	DEVICE	1	2	3	4	5	6	7	8	9	10	11	12	13	14	15	16	17	18	19	20
IC301	LA6458	16.3V	0V	0V	0V	-16.0V	0V	0V	0V	16.3V											
IC302	TC9149	0V	0V	0V	0V	0V	0V	0V	0V	0V	0V	0V	0V	5.1V	0V	2.6V	5.1V				
IC303,304	IR2E29	12.3V	14.7V	16.2V	15.0V	16.2V	15.0V	16.2V	0V	0.3V	17.0V	0V	0V	0V	2.7V	0V	0.9V				
IC305	TC9185P	0V	2.6V	5.6V	0V	0V	0.8V	0.9V	0.9V	0.9V	1.5V	0V	0V	0.8V	0.8V	0.8V	0.8V	0V	0V	0V	4.9V

2ND OUTLET P.C.BOARD (BOTTOM VIEW)



TRANSISTOR DC VOLTAGES				
SYMBOL No.	DEVICE	B	C	E
Q201	2SC536	-6V	0V	0V
Q202	2SC536	0V	0V	0V

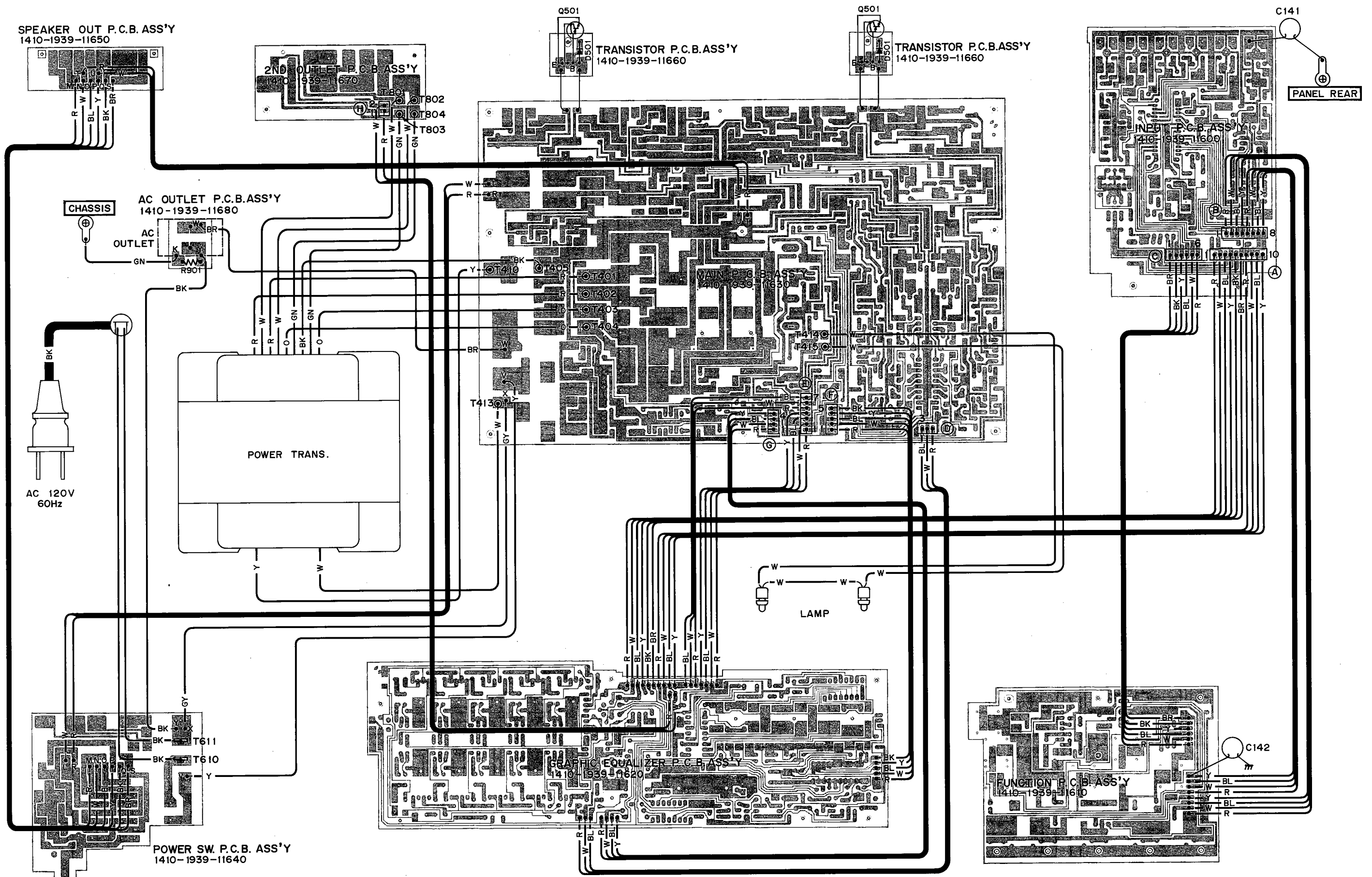
MAIN PRINTED CIRCUIT BOARD (BOTTOM VIEW)



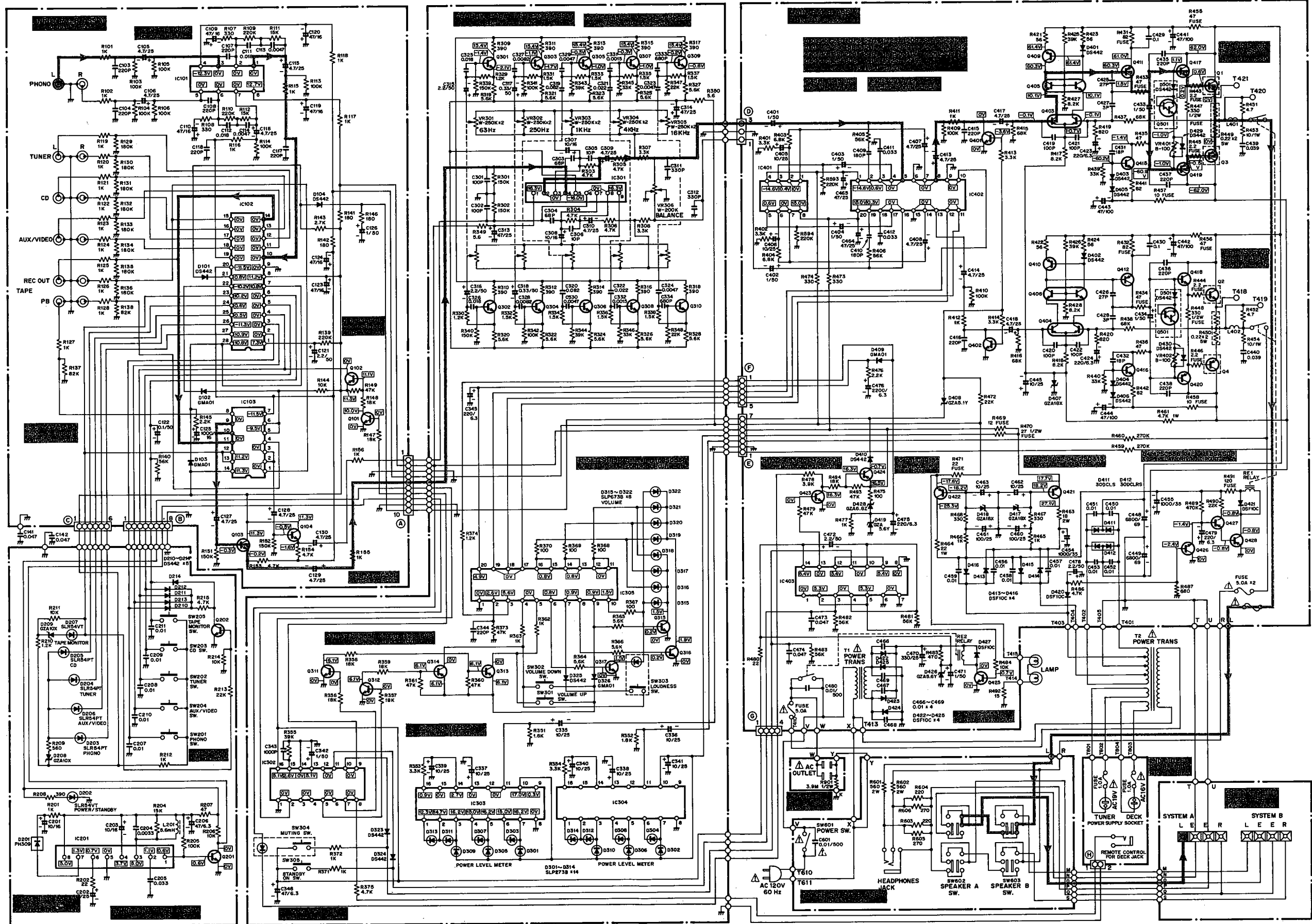
IC PIN NUMBERS DC VOLTAGES																					
SYMBOL No.	DEVICE	1	2	3	4	5	6	7	8	9	10	11	12	13	14	15	16	17	18	19	20
IC401	LA6458D	0V	0V	0.4V	-14.6V	0.6V	0V	0V	15.0V												
IC402	TC9177	-14.6V	0.6V	0V	0V	0V	0V	0V	0V	0V	0V	0V	0V	0V	0V	0V	0V	0V	0.3V	15.0V	
IC403	LC4913	0V	5.3V	0V	0V	5.3V	0V	0V	0V	5.4V	0V	0V	5.4V	0V	5.4V						

TRANSISTOR DC VOLTAGES														
SYMBOL No.	DEVICE	B	C	E	SYMBOL No.	DEVICE	B	C	E	SYMBOL No.	DEVICE	B	C	E
Q401,402	2SD1012	-3.6V	0V	0V	Q421	2SD313	18.2V	27						
Q403,404	2SC1583	-0.1V	10.1V	-0.7V	Q422	2SB632	-18.2V	-2						
Q405,406	2SC2291	-	60.3V	10.1V	Q423	2SC536	0V	16						
Q409,410	2SA608	61.4V	60.3V	61.4V	Q424	2SA608	16.3V	-						
Q411,412	2SA1209	60.3V	1.5V	61.0V	Q425	2SC536	0.7V	-						
Q415,416	2SC2911	-60.2V	-1.4V	-60.9V	Q426	2SC536	-2.4V	-						
Q417,418	2SC3117	1.1V	62.0V	0.6V	Q427	2SA608	-1.4V	-						
Q419,420	2SA1249	-1.0V	-62.0V	-0.5V	Q428	2SA608	-0.8V	-						

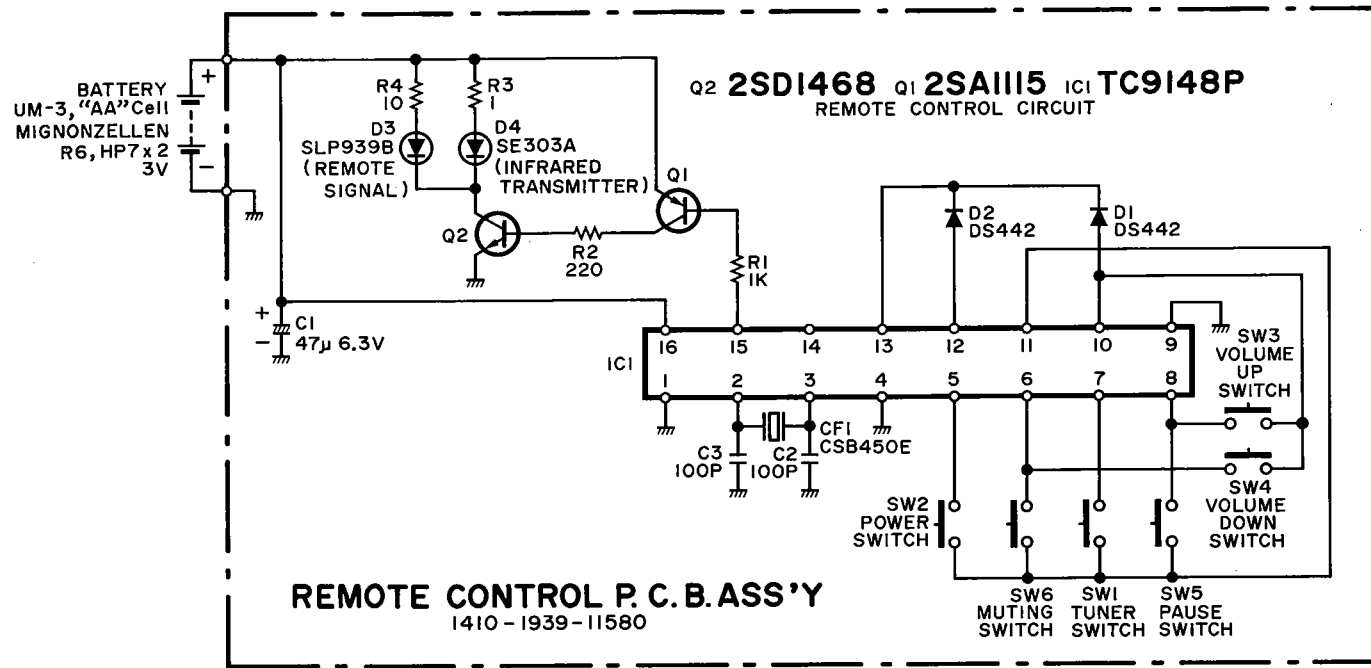
POINT TO POINT WIRING DIAGRAM



SCHEMATIC DIAGRAM (AMPLIFIER SECTION)



SCHEMATIC DIAGRAM (REMOTE CONTROL SECTION)



SEMICONDUCTOR LEAD IDENTIFICATION

TRANSISTOR	FRONT VIEW	BOTTOM VIEW	TRANSISTOR	FRONT VIEW	BOTTOM VIEW
2SA 1302 2SC 3281			2SC 1583 2SC 2291		
2SA 1115 2SD 1468			2SA 1209 2SA 1249 2SB 632 2SC 2911 2SC 3117 2SD 947		
2SA 608 2SC 536			2SD 313		
2SD 1012			TERMINAL NAME		
			B → BASE C → COLLECTOR E → EMITTER		

No.	Name	Position	No.	Name	Position
SW201	PHONO Switch	OFF	SW303	LOUDNESS Switch	OFF
SW202	TUNER Switch	OFF	SW304	MUTING Switch	OFF
SW203	COMPACT DISC Switch	OFF	SW305	STANDBY ON Switch	OFF
SW204	AUX / VIDEO Switch	OFF	SW601	POWER Switch	OFF
SW205	TAPE MONITOR Switch	OFF	SW602	SPEAKER A Switch	OFF
SW301	VOLUME UP Switch	OFF	SW603	SPEAKER B Switch	OFF
SW302	VOLUME DOWN Switch	OFF			

PRODUCT SAFETY NOTICE

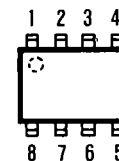
Each precaution in this manual should be followed during servicing. Components identified with the IEC symbol in the parts list and the schematic diagram designate components in which safety can be of special significance. When replacing a component identified with , use only the replacement parts designated, or parts with the same ratings of resistance, wattage or voltage that are designated in the parts list in this manual. Leakage-current or resistance measurements must be made to determine that exposed parts are acceptably insulated from the supply circuit before returning the product to the customer.

NOTES:

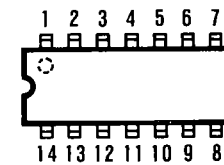
1. All resistors values are indicated in "ohm" (K=10³, M=10⁶).
2. All capacitors values are indicated in "μF" (P=10⁻¹²).
3. All voltages indicated on the schematics are measured under the following conditions.
 - a. Use a V.T.V.M.
 - b. All voltages ± 10 % with respect to chassis ground
 - c. No signals at input terminals
 - d. AC input at 120 volts 60 Hz.
4. This is a basic schematic diagram.

Because Fisher products are subject to continuous improvement, Fisher Corporation reserves the right to make any changes or modifications without notice.

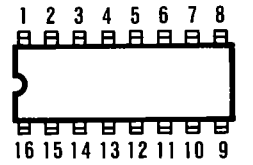
LA 6458 D BOTTOM VIEW



LC 4066 BH
LC 4913 BOTTOM VIEW

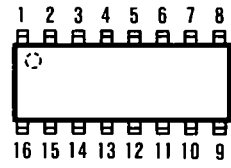


TC 9148 P
TC 9149 P BOTTOM VIEW

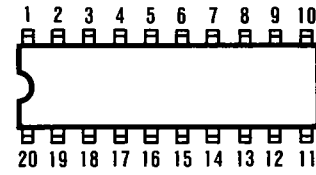


SEMICONDUCTOR LEAD IDENTIFICATION (Continued)

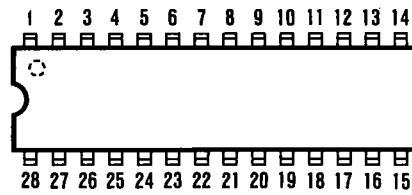
IR 2E29 BOTTOM VIEW



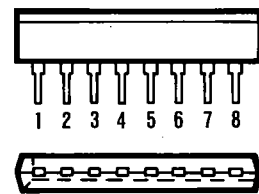
TC 9177 P
TC 9185 P BOTTOM VIEW



LC 7815 MG BOTTOM VIEW



μPC1473 HA FRONT/BOTTOM VIEWS



LA 6458 S FRONT/BOTTOM VIEWS

