

# SERVICE MANUAL

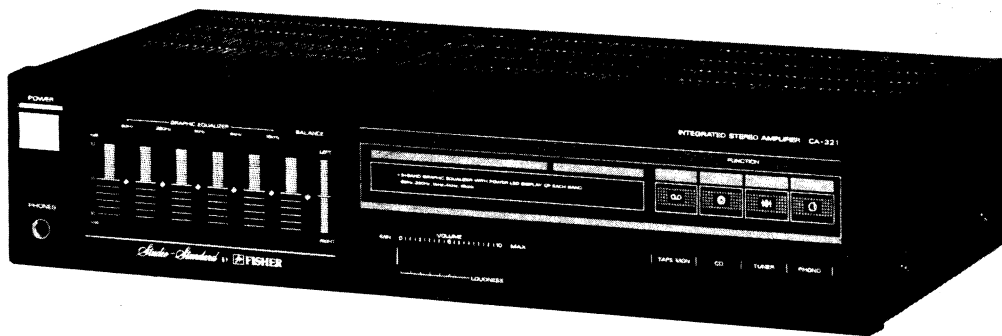


# FISHER

## INTEGRATED STEREO AMPLIFIER

# CA-321

(EUROPE)



132 306 49

## SPECIFICATIONS

### POWER AMPLIFIER SECTION

Minimum RMS sine wave power per channel  
within stated bandwidth at no more than stated  
distortion and with 8-ohm load 20 Watts  
Power Bandwidth 40 Hz – 20 kHz  
Total Harmonic Distortion 0.5 %  
I.M. Distortion 0.5 %  
Speaker Damping >20

### PREAMPLIFIER SECTION

Frequency Response  
Phono (RIAA)  $\pm 1$  dB  
CD (20 Hz – 20 kHz)  $\pm 1$  dB  
Input Sensitivity and Impedance  
Phono 2.5 mV/50 k $\Omega$   
Tape Monitor 150 mV/50 k $\Omega$   
Tuner/CD 150 mV/50 k $\Omega$   
Phono Max. Input Capability 150 mV

### Graphic Equalizer

63 Hz	$\pm 10$ dB
250 Hz	$\pm 10$ dB
1 kHz	$\pm 10$ dB
4 kHz	$\pm 10$ dB
16 kHz	$\pm 10$ dB

### Hum and Noise (IHF Short Circuit, A Network)

Phono	68 dB
Tape Monitor	85 dB
Tuner/CD	85 dB

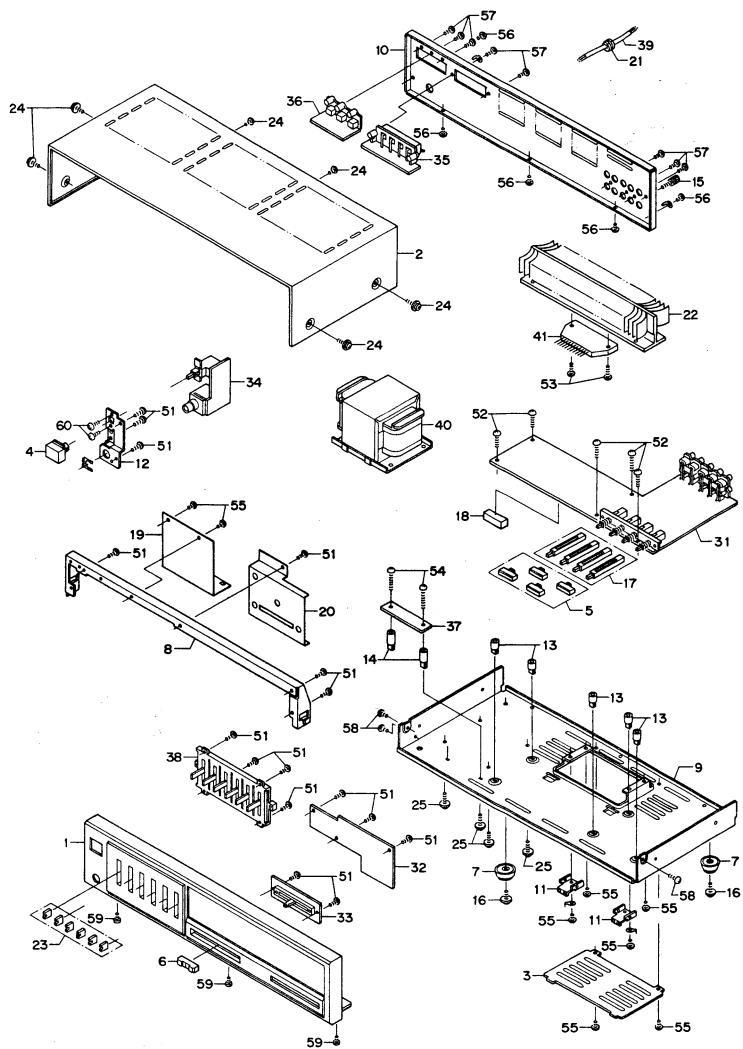
### GENERAL

Power Requirements	AC 220 V
(50 Hz)	120 Watts
Dimensions (W x H x D)	400 x 91 x 202 mm
Weight (approx.)	3.8 kg

– Specifications and design are subject to change without notice. –

# CABINET & CHASSIS PARTS LIST/EXPLODED VIEW

Ref. No.	Part No.	Description	Q'ty
<b>PACKAGE</b>			
	131-6-1169-19907	Box Corrugate-Exp.	1
	131-6-3009-36250	Pad (Left)	1
	131-6-3009-36260	Pad (Right)	1
	131-6-3069-16350	Patching Sheet	1
	131-6-4559-11200	Serial No. Sheet	2
	141-6-2519-22390	Sheet Polyethylene	1
<b>ACCESSORIES</b>			
	131-6-2719-10401	Bag Fan	1
	131-6-4559-11200	Serial No. Sheet	1
	141-6-4519-27939	Certificate Card	1
	142-6-4119-33791	Explanatory Booklet	1
<b>CABINET</b>			
	4-2379-21520	Terminal Lug	1
	4-2379-21524	Terminal Lug	1
	131-6-4559-11200	Serial No. Sheet	1
	141-2-4729-07100	Wire Band	16
1	131-0-1016-46501	Cabinet Front Assy	1
	131-2-1110-39501	Plate Decorate (EQ.)	1
	131-2-1110-39610	Plate Decorate	1
	131-2-1203-69001	Cabinet Front	1
	131-2-1801-16200	Leg	2
	131-2-3608-16600	Filter	1
2	131-2-1410-34400	Cover	1
3	131-2-1410-34900	Cover Bottom	1
4	131-2-1601-86200	Knob (Power)	1
5	131-2-1601-96701	Knob (Function)	4
6	131-2-1601-99600	Knob (Volume)	1
7	131-2-1801-12900	Leg	2
8	131-2-3202-15900	Metal Reinforce	1
9	131-2-3301-32300	Chassis	1
10	131-2-3306-41501	Panel Rear	2
11	131-2-3310-18400	Metal Support	1
12	131-2-3604-16700	Metal Mount Switch	1
13	131-2-3614-20300	Mount P.C.B.	5
14	131-2-3614-21800	Mount P.C.B.	2
15	131-2-4201-17800	Screw Ground	1
16	131-2-4201-25200	Screw, Brazier Hd. Tapping-B, + M3.0X6	2
17	131-2-4219-20200	Shaft	4
18	131-2-5205-34900	Cushion	1
19	131-2-6101-31800	Plate Shield	1
20	131-2-6103-27200	Cover Shield	1
21	131-2-6111-14200	Bushing (4N-4)	1
22	131-2-6201-37700	Plate Heat Sink	1
23	141-2-1659-68800	Knob Cap	6
24	141-2-4219-33101	Screw, Bind Hd. Tapping-B, + M3.0X8	6
25	141-2-4219-43300	Screw, Bind Hd. Tapping-C, + M4.0X10	4
31	141-0-1939-26630	Main Amplifier P.C.B. Assy	1
32	141-0-1939-26640	Graphic EQ. P.C.B. Assy	1
33	141-0-1939-26650	Volume P.C.B. Assy	1
34	141-0-1939-26660	Power Switch P.C.B. Assy	1
35	141-0-1939-26670	Speaker Out P.C.B. Assy	1
36	141-0-1939-26680	Power Supply P.C.B. Assy	1
37	141-0-1939-26690	AC Select P.C.B. Assy	1
38	4-2229-77640	Slide Volume Unit	1
39	△ 4-2432-00500	Power Cord	1
40	△ 4-2512-33221	Power Trans	1
41	409 047 0309	IC STK4132MK2-S [IC301]	1
51	411 020 5706	SCR S-TPG BRZ 2.6X8	16
52	411 020 6208	SCR S-TPG BRZ 3X12	5
53	411 020 6703	SCR S-TPG BRZ 3X16	2
54	411 020 7007	SCR S-TPG BRZ 3X20	2
55	411 020 7700	SCR S-TPG BRZ 3X6	8
56	411 099 9704	SCR S-TPG BRZ 3X6	5
57	411 099 9803	SCR S-TPG BRZ 3X8	8
58	411 021 5705	SCR S-TPG BIN 3X6	3
59	411 021 6603	SCR S-TPG BIN 3X8	3
60	411 002 8503	SCR PAN 3X6	2



Ref. No.	Part No.	Description	Q'ty
----------	----------	-------------	------

**NOTES:**

1. Parts order must contain Model Number, Part Number and Description.
2. Ordering quantity of screws and resistors must be multiple of 10 pcs.

**PRODUCT SAFETY NOTICE**

Each precaution in this manual should be followed during servicing. Components identified with the IEC symbol  $\Delta$  in the parts list and the schematic diagram designate components in which safety can be of special significance. When replacing a component identified with  $\Delta$ , use only the replacement parts designated, or parts with the same ratings of resistance, wattage or voltage that are designated in the parts list in this manual. Leakage-current or resistance measurements must be made to determine that exposed parts are acceptably insulated from the supply circuit before returning the product to the customer.

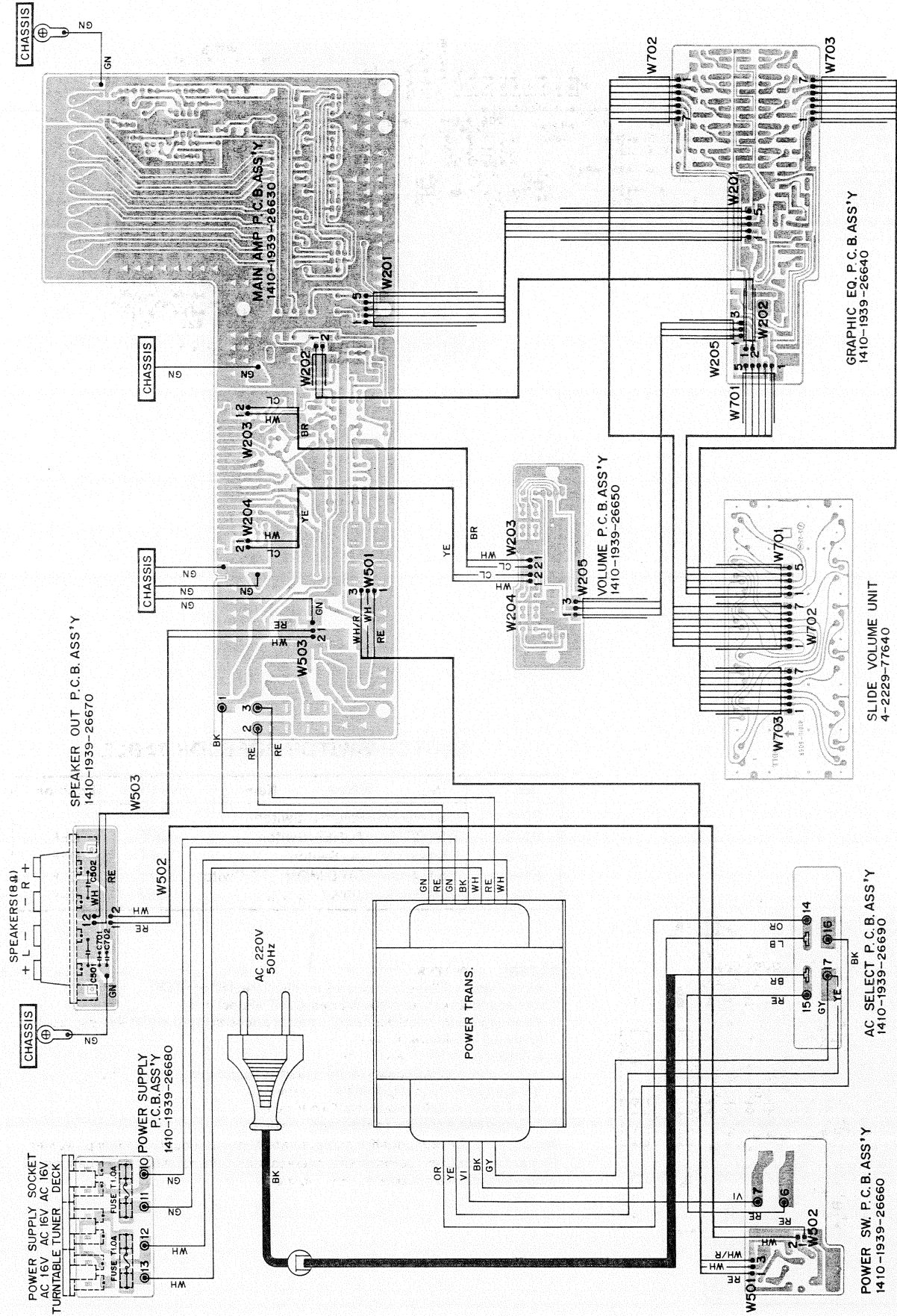
# P.C.BOARD PARTS LIST

Ref. No.	Part No.	Description	Q'ty	Ref. No.	Part No.	Description	Q'ty
<b>MAIN AMPLIFIER P.C.B. ASSY</b>							
31	141-0-1939-26630	Main Amplifier P.C.B. Assy	1	C317	403 052 6905	ELECT 10U M 35V	1
S1	4-2319-79560	Push Switch (Function, TAPE MONITOR)	1	C318	403 086 8104	NP-ELECT 4.7U M 50V	1
	△ 4-2349-20250	Fuse T 2.0A	2	C319	403 045 9104	ELECT 220U M 25V	1
	△ 4-2349-20570	Fuse T2.5A	2	C320	403 052 8107	ELECT 100U M 35V	1
	4-2352-01700	Pin Jack 4P (TAPE)	1	C401	404 012 6904	CERAMIC 0.047U Z 150V	1
	4-2352-01780	Pin Jack 6P (PHONO, TUNER, CD)	1	C402	404 012 6904	CERAMIC 0.047U Z 150V	1
	4-2352-01940	Fuse Clip	8	C403	404 012 6904	CERAMIC 0.047U Z 150V	1
	111-2-6220-11100	Wire Wrap Terminal	3	C404	404 012 6904	CERAMIC 0.047U Z 150V	1
L301	4-2532-00420	RF Filter (5µH)	1	C405	404 012 5105	ELECT 2200U M 35V	1
or	4-2532-00422	RF-Coil (5µH)	1	C406	404 012 5105	ELECT 2200U M 35V	1
L302	4-2532-00420	RF Filter (5µH)	1	C407	403 047 1502	ELECT 4.7U M 25V	1
or	4-2532-00422	RF-Coil (5µH)	1	C408	403 047 1502	ELECT 4.7U M 25V	1
IC101	409 018 4503	IC LA6458DS	1	C703	403 074 2701	CERAMIC 0.047U Z 50V	1
Q301	405 019 3804	TR 2SC536-G-NP	1	C704	403 074 2701	CERAMIC 0.047U Z 50V	1
or	405 019 2708	TR 2SC536-F-NP	1	C707	403 069 8404	CERAMIC 0.01U Z 50V	1
Q401	405 013 7006	TR 2SC2274-F	1	C708	403 069 8404	CERAMIC 0.01U Z 50V	1
or	405 013 6801	TR 2SC2274-E	1	R101	401 026 4308	CARBON 3.3K JA 1/6W	1
Q402	405 006 6702	TR 2SA984-F	1	R102	401 026 4308	CARBON 3.3K JA 1/6W	1
or	405 006 6504	TR 2SA984-E	1	R103	401 024 7707	CARBON 100K JA 1/6W	1
D101	407 008 0405	DIODE GMB01-BT	1	R104	401 024 7707	CARBON 100K JA 1/6W	1
D102	407 008 0405	DIODE GMB01-BT	1	R105	401 024 7707	CARBON 100K JA 1/6W	1
D201	407 005 4703	DIODE DS446-BT	1	R106	401 024 7707	CARBON 100K JA 1/6W	1
D301	407 005 4703	DIODE DS446-BT	1	R107	401 026 3905	CARBON 330 JA 1/6W	1
D302	407 005 3805	DIODE DS442-BT	1	R108	401 026 3905	CARBON 330 JA 1/6W	1
D401	407 004 9303	DIODE DSF10C-KC8	1	R109	401 025 8703	CARBON 220K JA 1/6W	1
D402	407 004 9303	DIODE DSF10C-KC8	1	R110	401 025 8703	CARBON 220K JA 1/6W	1
D403	407 004 9303	DIODE DSF10C-KC8	1	R111	401 025 1902	CARBON 15K JA 1/6W	1
D404	407 004 9303	DIODE DSF10C-KC8	1	R112	401 025 1902	CARBON 15K JA 1/6W	1
D405	407 049 7609	ZENER DIODE GZA16Z-BT	1	R113	401 024 7707	CARBON 100K JA 1/6W	1
D406	407 049 7609	ZENER DIODE GZA16Z-BT	1	R114	401 024 7707	CARBON 100K JA 1/6W	1
D601	407 049 7500	ZENER DIODE GZA16Y	1	R115	401 012 5708	CARBON 1K JA 1/4W	1
C101	403 023 5807	CERAMIC 330P K 50V	1	R116	401 012 5708	CARBON 1K JA 1/4W	1
C102	403 023 5807	CERAMIC 330P K 50V	1	R117	401 012 5708	CARBON 1K JA 1/4W	1
C103	403 023 5807	CERAMIC 330P K 50V	1	R118	401 012 5708	CARBON 1K JA 1/4W	1
C104	403 023 5807	CERAMIC 330P K 50V	1	R119	401 012 5708	CARBON 1K JA 1/4W	1
C105	403 047 1502	ELECT 4.7U M 25V	1	R120	401 012 5708	CARBON 1K JA 1/4W	1
C106	403 047 1502	ELECT 4.7U M 25V	1	R121	401 012 5708	CARBON 1K JA 1/4W	1
C107	403 023 5807	CERAMIC 330P K 50V	1	R122	401 012 5708	CARBON 1K JA 1/4W	1
C108	403 023 5807	CERAMIC 330P K 50V	1	R123	401 012 5708	CARBON 1K JA 1/4W	1
C109	403 041 3304	ELECT 47U M 10V	1	R124	401 012 5708	CARBON 1K JA 1/4W	1
C110	403 041 3304	ELECT 47U M 10V	1	R125	401 016 2208	CARBON 220 JA 1/4W	1
C111	403 059 0401	POLYESTER 0.018U K 50V	1	R126	401 016 2208	CARBON 220 JA 1/4W	1
C112	403 059 0401	POLYESTER 0.018U K 50V	1	R255	401 016 2208	CARBON 220 JA 1/4W	1
C113	403 061 7801	POLYESTER 4700P J 50V	1	R301	401 024 7004	CARBON 1K JA 1/6W	1
C114	403 061 7801	POLYESTER 4700P J 50V	1	R302	401 024 7004	CARBON 1K JA 1/6W	1
C115	403 049 1609	ELECT 1U M 50V	1	R303	401 027 3003	CARBON 56K JA 1/6W	1
C116	403 049 1609	ELECT 1U M 50V	1	R304	401 027 3003	CARBON 56K JA 1/6W	1
C117	403 023 5807	CERAMIC 330P K 50V	1	R305	401 026 8504	CARBON 430 JA 1/6W	1
C118	403 023 5807	CERAMIC 330P K 50V	1	R306	401 026 8504	CARBON 430 JA 1/6W	1
C119	403 018 8509	CERAMIC 220P K 50V	1	R307	401 021 4105	CARBON 56K JA 1/4W	1
C120	403 018 8509	CERAMIC 220P K 50V	1	R308	401 021 4105	CARBON 56K JA 1/4W	1
C121	403 018 8509	CERAMIC 220P K 50V	1	R309	401 016 3403	CARBON 2.2K JA 1/4W	1
C122	403 018 8509	CERAMIC 220P K 50V	1	R310	401 016 3403	CARBON 2.2K JA 1/4W	1
C123	403 018 8509	CERAMIC 220P K 50V	1	R311	401 055 5703	OXIDE-MT 2.2K JB 1/2W	1
C124	403 018 8509	CERAMIC 220P K 50V	1	R312	401 055 5703	OXIDE-MT 2.2K JB 1/2W	1
C125	403 018 8509	CERAMIC 220P K 50V	1	R313	401 012 2905	CARBON 10 JA 1/4W	1
C126	403 018 8509	CERAMIC 220P K 50V	1	R314	401 012 2905	CARBON 10 JA 1/4W	1
C127	403 047 4206	ELECT 47U M 25V	1	R315	401 012 4503	CARBON 100 JA 1/4W	1
C128	403 047 4206	ELECT 47U M 25V	1	R316	401 012 4503	CARBON 100 JA 1/4W	1
C129	403 074 2701	CERAMIC 0.047U Z 50V	1	R317	402 015 3104	FUSIBLE RES 100 J- 1/4W	1
C130	403 074 2701	CERAMIC 0.047U Z 50V	1	R318	402 015 3104	FUSIBLE RES 100 J- 1/4W	1
C131	403 023 5807	CERAMIC 330P K 50V	1	R319	401 058 3805	OXIDE-MT 1K JB 1W	1
C132	403 023 5807	CERAMIC 330P K 50V	1	R320	401 058 3805	OXIDE-MT 1K JB 1W	1
C140	403 074 2701	CERAMIC 0.047U Z 50V	1	R321	401 016 4806	CARBON 22K JA 1/4W	1
C301	403 071 6207	CERAMIC 220P K 50V	1	R322	401 027 9005	CARBON 82K JA 1/6W	1
C302	403 071 6207	CERAMIC 220P K 50V	1	R323	401 027 0309	CARBON 47K JA 1/6W	1
C303	403 071 6207	CERAMIC 220P K 50V	1	R324	401 012 7009	CARBON 10K JA 1/4W	1
C304	403 071 6207	CERAMIC 220P K 50V	1	R401	401 023 0204	CARBON 82 JA 1/4W	1
C305	403 071 6207	CERAMIC 220P K 50V	1	R402	402 015 9700	FUSIBLE RES 82 J- 1/4W	1
C306	403 071 6207	CERAMIC 220P K 50V	1	or	402 016 0805	FUSIBLE RES 82 J- 1/4W	1
C307	403 038 9302	ELECT 33U M 6.3V	1	R403	401 016 3809	CARBON 2.2K JA 1/4W	1
C308	403 038 9302	ELECT 33U M 6.3V	1	R404	401 016 3809	CARBON 2.2K JA 1/4W	1
C309	403 054 1205	ELECT 47U M 35V	1	R601	401 058 3805	OXIDE-MT 1K JB 1W	1
C310	403 054 1205	ELECT 47U M 35V	1	<b>GRAPHIC EQ. P.C.B. ASSY</b>			
C311	403 074 2701	CERAMIC 0.047U Z 50V	1	32	141-0-1939-26640	Graphic EQ. P.C.B. Assy	1
C312	403 074 2701	CERAMIC 0.047U Z 50V	1	IC201	409 018 4909	IC LA6458S	1
C315	403 052 8008	ELECT 100U M 35V	1	Q201	405 017 9501	TR 2SC3330-S	1
C316	403 052 8008	ELECT 100U M 35V	1	or	405 017 9600	TR 2SC3330-T	1

## P.C. BOARD PARTS LIST (Continued)

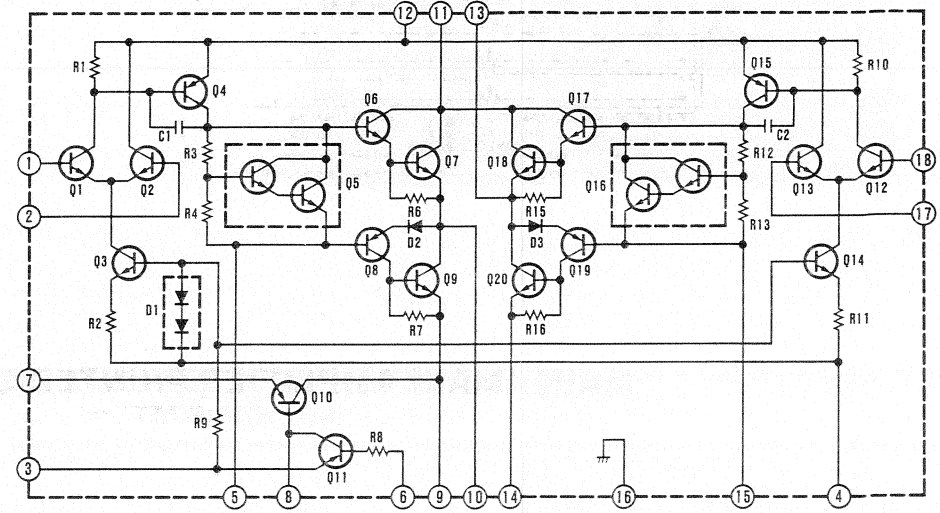
Ref. No.	Part No.	Description	Q'ty	Ref. No.	Part No.	Description	Q'ty
Q202	405 017 9501	TR 2SC3330-S	1	R226	401 024 7707	CARBON 100K JA 1/6W	1
or	405 017 9600	TR 2SC3330-T	1	R227	401 024 9305	CARBON 1.2K JA 1/6W	1
Q203	405 017 9501	TR 2SC3330-S	1	R228	401 024 9305	CARBON 1.2K JA 1/6W	1
or	405 017 9600	TR 2SC3330-T	1	R229	401 026 6609	CARBON 390 JA 1/6W	1
Q204	405 017 9501	TR 2SC3330-S	1	R230	401 026 6609	CARBON 390 JA 1/6W	1
or	405 017 9600	TR 2SC3330-T	1	R231	401 025 1902	CARBON 15K JA 1/6W	1
Q205	405 017 9501	TR 2SC3330-S	1	R232	401 025 1902	CARBON 15K JA 1/6W	1
or	405 017 9600	TR 2SC3330-T	1	R233	401 026 7408	CARBON 39K JA 1/6W	1
Q206	405 017 9501	TR 2SC3330-S	1	R234	401 026 7408	CARBON 39K JA 1/6W	1
or	405 017 9600	TR 2SC3330-T	1	R235	401 025 1605	CARBON 1.5K JA 1/6W	1
Q207	405 017 9501	TR 2SC3330-S	1	R236	401 025 1605	CARBON 1.5K JA 1/6W	1
or	405 017 9600	TR 2SC3330-T	1	R237	401 026 6609	CARBON 390 JA 1/6W	1
Q208	405 017 9501	TR 2SC3330-S	1	R238	401 026 6609	CARBON 390 JA 1/6W	1
or	405 017 9600	TR 2SC3330-T	1	R239	401 025 1902	CARBON 15K JA 1/6W	1
Q209	405 017 9501	TR 2SC3330-S	1	R240	401 025 1902	CARBON 15K JA 1/6W	1
or	405 017 9600	TR 2SC3330-T	1	R241	401 026 4605	CARBON 33K JA 1/6W	1
Q210	405 017 9501	TR 2SC3330-S	1	R242	401 026 4605	CARBON 33K JA 1/6W	1
or	405 017 9600	TR 2SC3330-T	1	R243	401 025 1605	CARBON 1.5K JA 1/6W	1
C201	403 009 8105	CERAMIC 100P K 50V	1	R244	401 025 1605	CARBON 1.5K JA 1/6W	1
C202	403 009 8105	CERAMIC 100P K 50V	1	R245	401 026 6609	CARBON 390 JA 1/6W	1
C203	403 049 2002	ELECT 1U M 50V	1	R246	401 026 6609	CARBON 390 JA 1/6W	1
C204	403 049 2002	ELECT 1U M 50V	1	R247	401 025 1902	CARBON 15K JA 1/6W	1
C205	403 031 0306	CERAMIC 68P K 50V	1	R248	401 025 1902	CARBON 15K JA 1/6W	1
C206	403 031 0306	CERAMIC 68P K 50V	1	R249	401 025 8208	CARBON 22K JA 1/6W	1
C207	403 008 5204	CERAMIC 10P D 50V	1	R250	401 025 8208	CARBON 22K JA 1/6W	1
C208	403 008 5204	CERAMIC 10P D 50V	1	R251	401 025 1605	CARBON 1.5K JA 1/6W	1
C209	403 042 0807	ELECT 10U M 16V	1	R252	401 025 1605	CARBON 1.5K JA 1/6W	1
C210	403 042 0807	ELECT 10U M 16V	1	<b>VOLUME P.C.B. ASSY</b>			
C211	403 050 1605	ELECT 2.2U M 50V	1	33	141-0-1939-26650	Volume P.C.B. Assy	1
C212	403 050 1605	ELECT 2.2U M 50V	1	VR201	4-2229-76220	Slide VR (A-100kΩ x 2, VOLUME)	1
C213	403 018 8509	CERAMIC 220P K 50V	1	C291	403 072 7906	CERAMIC 330P K 50V	1
C214	403 018 8509	CERAMIC 220P K 50V	1	C292	403 072 7906	CERAMIC 330P K 50V	1
C215	403 059 0609	POLYESTER 0.018U K 50V	1	C293	403 062 7503	POLYESTER 0.056U K 50V	1
C216	403 059 0609	POLYESTER 0.018U K 50V	1	C294	403 062 7503	POLYESTER 0.056U K 50V	1
C217	403 050 8000	ELECT 3.3U M 50V	1	C295	403 050 1605	ELECT 2.2U M 50V	1
C218	403 050 8000	ELECT 3.3U M 50V	1	C296	403 050 1605	ELECT 2.2U M 50V	1
C219	403 063 6406	POLYESTER 8200P K 50V	1	R291	401 026 9907	CARBON 4.7K JA 1/6W	1
C220	403 063 6406	POLYESTER 8200P K 50V	1	R292	401 026 9907	CARBON 4.7K JA 1/6W	1
C221	403 048 7909	ELECT 0.47U M 50V	1	R293	401 024 7004	CARBON 1K JA 1/6W	1
C222	403 048 7909	ELECT 0.47U M 50V	1	R294	401 024 7004	CARBON 1K JA 1/6W	1
C223	403 061 8907	POLYESTER 4700P K 50V	1	<b>POWER SWITCH P.C.B. ASSY</b>			
C224	403 061 8907	POLYESTER 4700P K 50V	1	34	141-0-1939-26660	Power Switch P.C.B. Assy	1
C225	403 067 8406	MT-COMPO 0.082U J 50V	1	S2	△ 4-2312-05710	Switch Push Power (POWER)	1
C226	403 067 8406	MT-COMPO 0.082U J 50V	1		4-2352-01170	Jack 7P 6.45 (HEADPHONES)	1
C227	403 058 1805	POLYESTER 1500P K 50V	1		111-2-6220-11100	Wire Wrap Terminal	2
C228	403 058 1805	POLYESTER 1500P K 50V	1		131-2-6114-01400	Cover Safty	1
C229	403 059 6809	POLYESTER 0.022U K 50V	1	C801	△ 4-2239-70970	Capacitor 0.01MF400V	1
C230	403 059 6809	POLYESTER 0.022U K 50V	1	R501	401 055 7004	OXIDE-MT 270 JB 1/2W	1
C231	403 074 9007	CERAMIC 680P K 50V	1	R502	401 055 7004	OXIDE-MT 270 JB 1/2W	1
C232	403 074 9007	CERAMIC 680P K 50V	1	R503	401 014 2903	CARBON 150 JA 1/4W	1
C233	403 061 8907	POLYESTER 4700P K 50V	1	R504	401 014 2903	CARBON 150 JA 1/4W	1
C234	403 061 8907	POLYESTER 4700P K 50V	1	<b>SPEAKER OUT P.C.B. ASSY</b>			
C235	403 044 0706	ELECT 47U M 16V	1	35	141-0-1939-26670	Speaker Out P.C.B. Assy	1
C236	403 045 9104	ELECT 220U M 25V	1		4-2379-70820	4P Push Terminal (SPEAKERS)	1
R201	401 014 4105	CARBON 1.5K JA 1/4W	1	C501	403 069 1504	CERAMIC 1000P K 50V	1
R202	401 025 1605	CARBON 1.5K JA 1/6W	1	C502	403 069 1504	CERAMIC 1000P K 50V	1
R203	401 024 7707	CARBON 100K JA 1/6W	1	C701	403 074 2701	CERAMIC 0.047U Z 50V	1
R204	401 024 7707	CARBON 100K JA 1/6W	1	C702	403 074 2701	CERAMIC 0.047U Z 50V	1
R205	401 024 7707	CARBON 100K JA 1/6W	1	<b>POWER SUPPLY P.C.B. ASSY</b>			
R206	401 024 7707	CARBON 100K JA 1/6W	1	36	141-0-1939-26680	Power Supply P.C.B. Assy	1
R207	401 026 9907	CARBON 4.7K JA 1/6W	1		△ 4-2349-20380	Fuse T1.0A	2
R208	401 026 9907	CARBON 4.7K JA 1/6W	1		4-2352-01940	Fuse Clip	4
R209	401 026 9907	CARBON 4.7K JA 1/6W	1		△ 4-2352-02980	Socket 2P (Tuner)	1
R210	401 026 9907	CARBON 4.7K JA 1/6W	1		△ 4-2352-02990	Socket 2P (Turntable)	1
R211	401 026 9907	CARBON 4.7K JA 1/6W	1		△ 4-2352-03000	Socket 2P (Deck)	1
R212	401 026 9907	CARBON 4.7K JA 1/6W	1		111-2-6220-11100	Wire Wrap Terminal	4
R213	401 026 6609	CARBON 390 JA 1/6W	1	<b>AC SELECT P.C.B. ASSY</b>			
R214	401 026 6609	CARBON 390 JA 1/6W	1	37	141-0-1939-26690	AC Select P.C.B. Assy	1
R215	401 025 1902	CARBON 15K JA 1/6W	1		4-2372-00830	EC Terminal 1P	2
R216	401 025 1902	CARBON 15K JA 1/6W	1		111-2-6220-11100	Wire Wrap Terminal	4
R217	401 025 0004	CARBON 120K JA 1/6W	1				
R218	401 025 0004	CARBON 120K JA 1/6W	1				
R219	401 024 9305	CARBON 1.2K JA 1/6W	1				
R220	401 024 9305	CARBON 1.2K JA 1/6W	1				
R221	401 026 6609	CARBON 390 JA 1/6W	1				
R222	401 026 6609	CARBON 390 JA 1/6W	1				
R223	401 025 1902	CARBON 15K JA 1/6W	1				
R224	401 025 1902	CARBON 15K JA 1/6W	1				
R225	401 024 7707	CARBON 100K JA 1/6W	1				

**POINT TO POINT WIRING DIAGRAM**

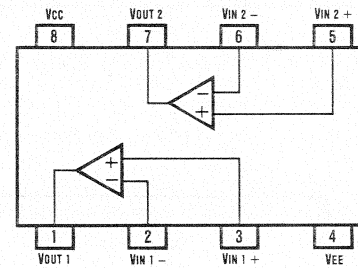


**INTEGRATED CIRCUIT BLOCK DIAGRAM**

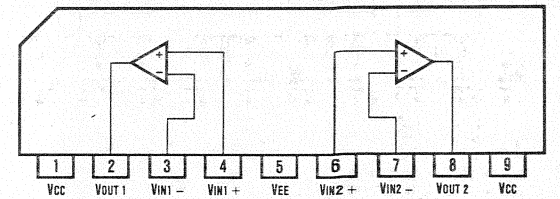
**POWER AMP IC STK 4132 MK2**



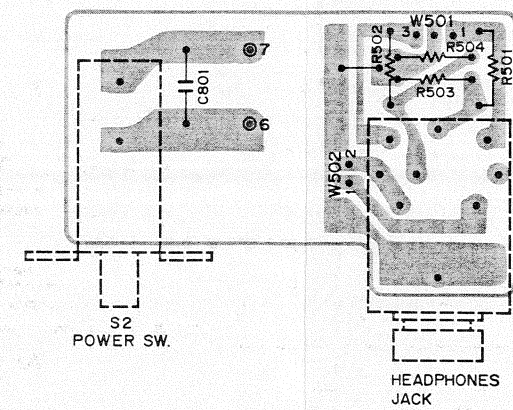
**PHONO EQ. AMP IC LA 6458 DS**



**GRAPHIC EQ. AMP IC LA 6458 S**

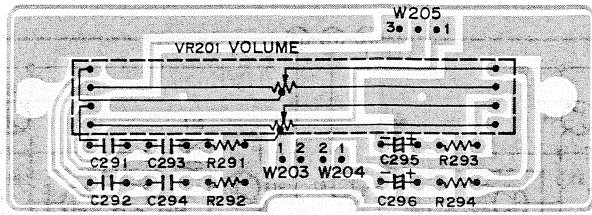


**POWER SWITCH P.C. BOARD (BOTTOM VIEW)**



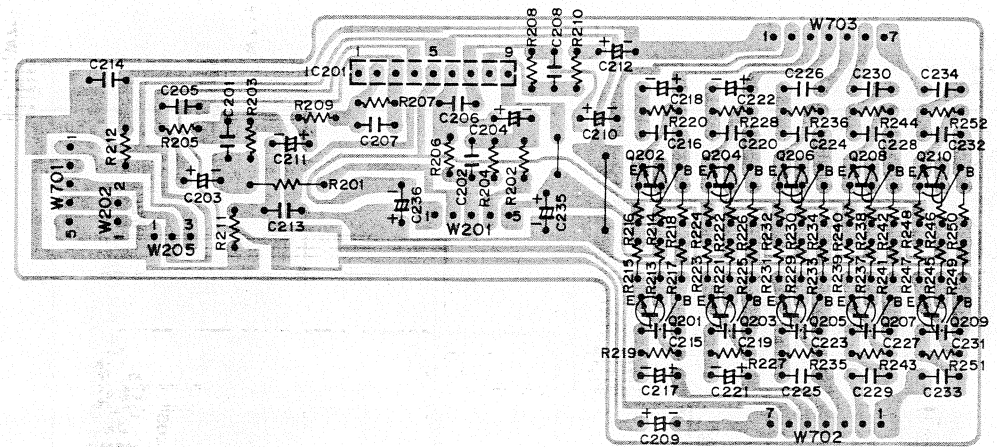
VOLUME P.C.BOARD

(BOTTOM VIEW)



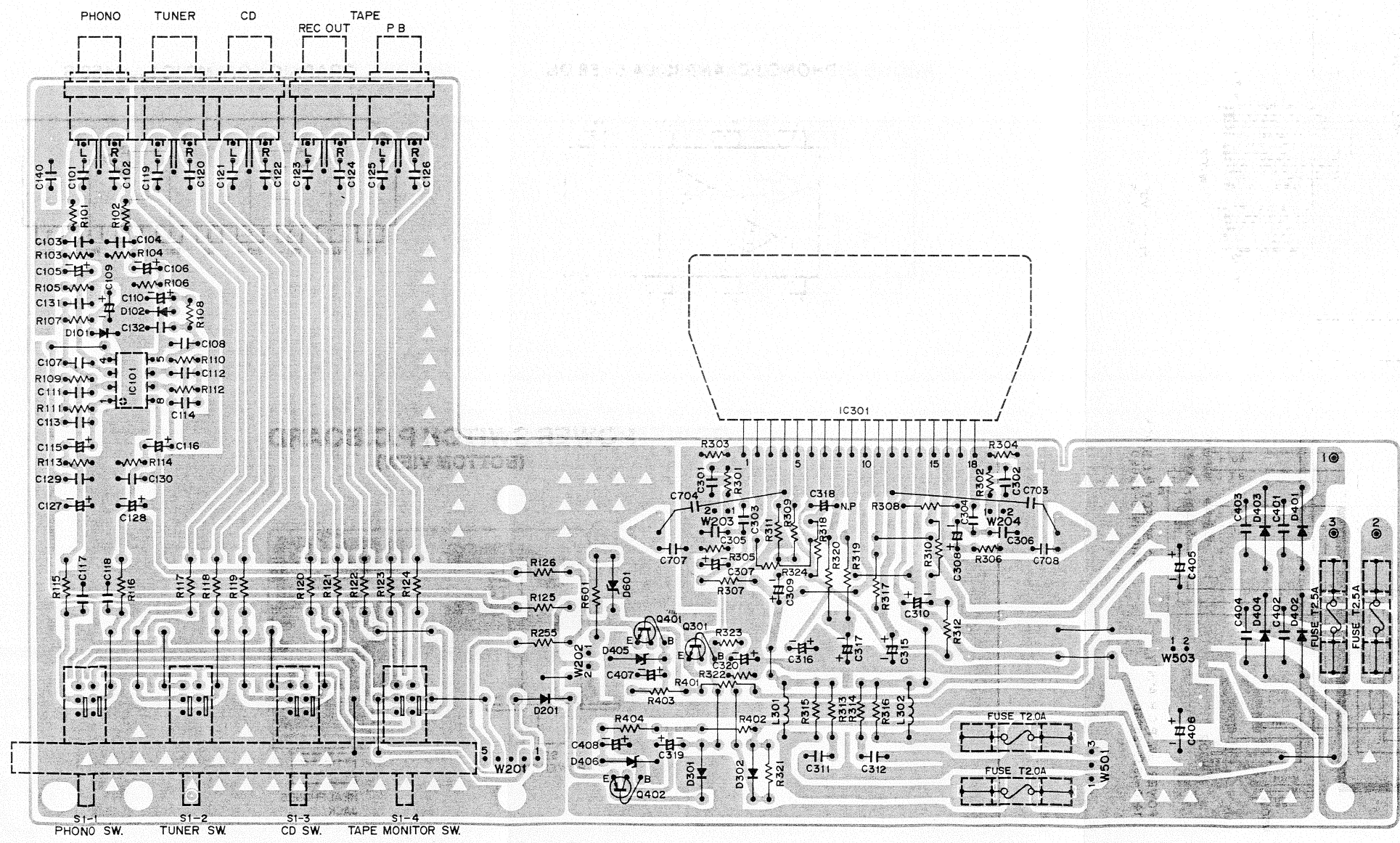
GRAPHIC EQ. P.C.BOARD

(BOTTOM VIEW)



MAIN AMPLIFIER PRINTED CIRCUIT BOARD

(BOTTOM VIEW)



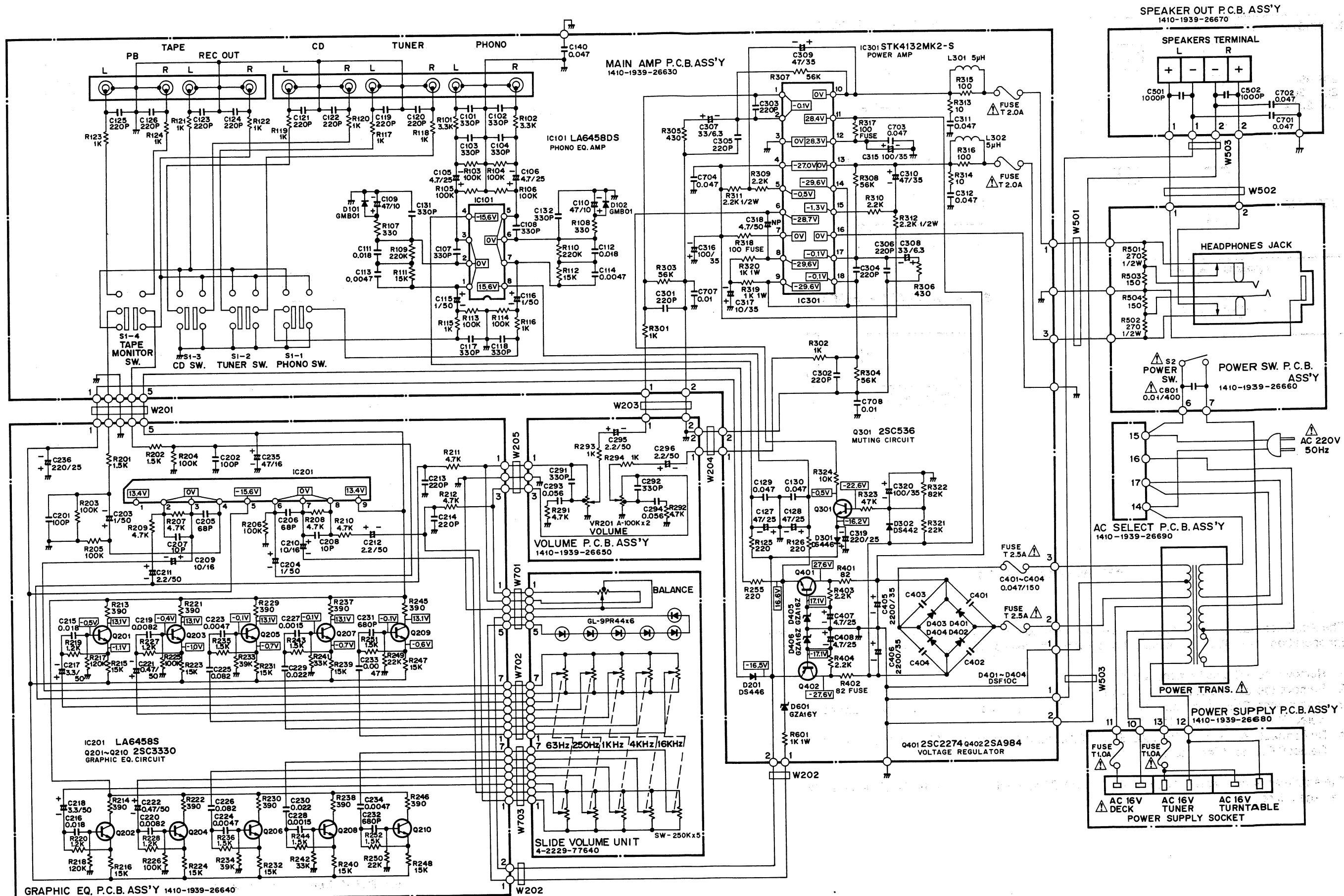
SWITCH POSITION TABLE

No.	Name	Position
S1-1	PHONO Switch	OFF
S1-2	TUNER Switch	OFF
S1-3	CD Switch	OFF
S1-4	TAPE MONITOR Switch	OFF
S2	POWER Switch	OFF

NOTES:

- All resistors values are indicated in "ohm" (K=10<sup>3</sup>, M=10<sup>6</sup>).
  - All capacitors values are indicated in "μF" (P=10<sup>-12</sup>).
  - All voltages indicated on the schematics are measured under the following conditions.
    - Use a V.T.V.M.
    - All voltages ±10% with respect to chassis ground
    - No signals at input terminals
    - AC input at 220 volts 50 Hz
  - This is a basic schematic diagram.
- Because Fisher products are subject to continuous improvement, Fisher Corporation reserves the right to make any changes or modifications without notice.

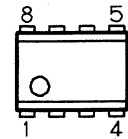
# SCHEMATIC DIAGRAM



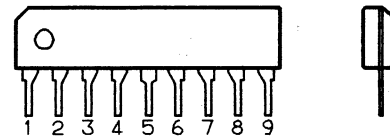
## SEMICONDUCTOR LEAD IDENTIFICATION

TRANSISTOR	FRONT VIEW	BOTTOM VIEW
2SA 984 2SC 536 2SC 2274	 E C B	 E C B
2SC 3330	 E C B	 E C B
<b>TERMINAL NAME</b>		
B → BASE C → COLLECTOR E → EMITTER		

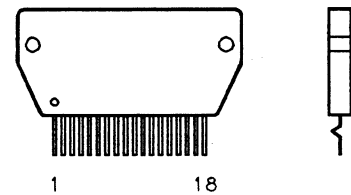
LA 6458 DS TOP VIEW



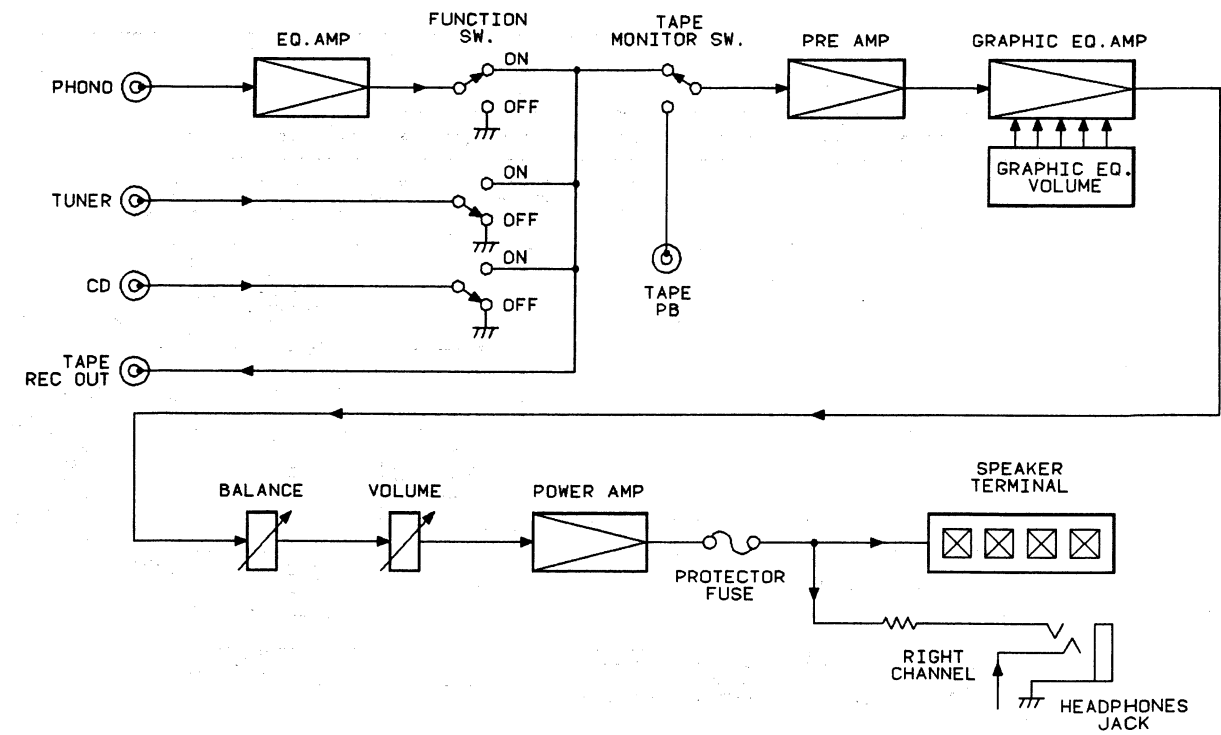
LA 6458 S TOP/SIDE VIEWS



STK 4132 MK2 TOP/SIDE VIEWS



## FUNCTIONAL BLOCK DIAGRAM



## IMPORTANT NOTE

The Amplifier has been Factory-adjusted for operation on 220V AC. The voltage can be changed for operation on 110V AC by making the following changes on the Amplifier inside.

1. Remove the AC plug from the wall outlet.
2. Remove the screws securing the cover.
3. Disconnect Gray lead from AC Select P.C.Board Terminal No. 17, and then connect it to AC Select P.C.Board Terminal No. 14.
4. Disconnect Yellow lead from AC Select P.C.Board Terminal No. 17, and then connect it to AC Select P.C.Board Terminal No. 16.

The Amplifier is now ready 110V operation. DO NOT attempt to operate the Amplifier on 220V. Damage will result!

**FISHER Hi-Fi Europa Vertriebs GmbH**

Stahlgruberring 4      Tel: 089/420 45-0  
8000 München 82      Tlx: 524033

August/87/2,000/K Printed in Japan