

SERVICE MANUAL

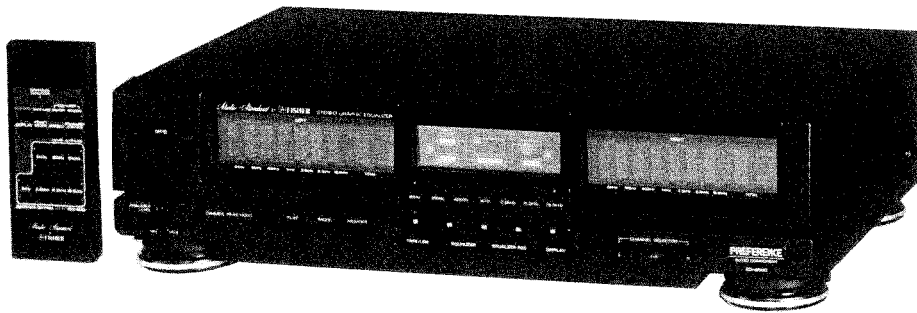


FISHER

STEREO GRAPHIC EQUALIZER
WITH REQ-9060 WIRELESS
REMOTE CONTROL

EQ-9060

(EUROPE)



139 233 40

SPECIFICATIONS

Remote Control (REQ-9060)	22-function, wireless remote control
Input Impedance	50k Ω
Output Impedance	2k Ω
T.H.D. (Flat Position)	
at 1V Output	0.01%
at 5V Output	0.01%
T.H.D. (Max Position)	
at 1V Output	0.04%
at 5V Output	0.04%
Gain (Flat Position)	< ± 0.2 dB
Frequency Response	
20Hz - 20kHz	± 0.5 dB

Tone Control Response	
Center of Frequency	$\pm 10\%$
64Hz	± 10 dB
160Hz	± 10 dB
400Hz	± 10 dB
1kHz	± 10 dB
2.5kHz	± 10 dB
6.3kHz	± 10 dB
15.6kHz	± 10 dB
S/N (IHF A, Reference 1V, Flat Position)	100dB
Crosstalk	
10Hz ~ 20kHz	50dB

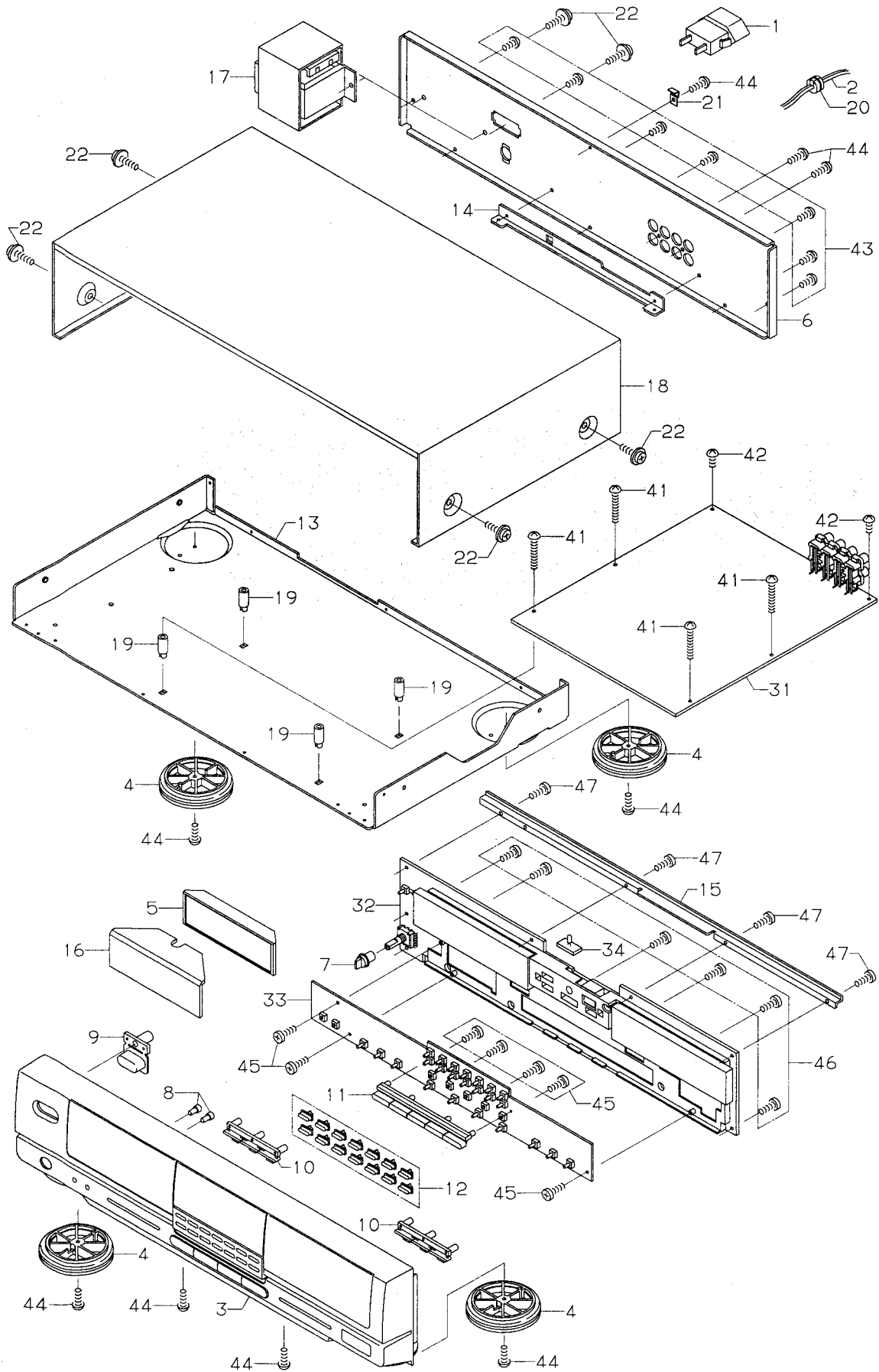
GENERAL

Power Requirements	AC: 220V (50/60Hz)	20Watts
AC Outlet		1
Dimensions (WxHxD)		440 x 115 x 290 mm
Weight (approx)		3.9kg

— Specifications and design are subject to change without notice. —

REFERENCE No. WFM-570354

CABINET EXPLODED VIEW



CABINET PARTS LIST

Ref. No.	Part No.	Description	Q'ty
PACKAGE			
	620 202 6589	Inner Carton	1
	620 198 1568	Pad,Bottom	1
	620 198 1575	Pad,Top	1
	620 050 7912	Staple SS19mm	8
	620 059 6596	Patching Sheet	1
	620 148 8012	Sheet Polyethylene	1
ACCESSORIES			
	620 204 4354	Assy,Poly Cover	1
	620 204 4651	Remocon,REQ-9060	1
	620 204 4255	Instruction Manual	1
	620 037 3500	RCA Cord 1000mm Black	1
	620 037 3517	RCA Cord 1000mm Gray	1
	620 057 8783	Bag Fan	1
	620 062 0543	Serial No. Sheet	1
	620 152 2624	Certificate Card	1
CABINET			
	620 125 8424	Wire Band	7
	620 152 7452	Serial No. Sheet	1
1	△ 620 017 1212	AC Socket	1
2	△ 620 023 7550	Power Cord	1
3	620 202 6367	Assy,Cabinet	1
4	620 198 6969	Assy,Foot	4
5	620 207 5631	Assy,Holder,Filter	1
6	620 201 4470	Panel,Rear	1
7	620 201 4531	Knob,Rotary	1
8	620 201 4364	Button,Mode	2
9	620 201 4371	Button,Power	1
10	620 201 4388	Button,Select	2
11	620 201 4395	Button,Type	1
12	620 201 4401	Button,UP	14
13	620 201 4425	Chassis	1
14	620 201 4319	Bracket-E,PCB	1
15	620 201 4494	Support,Cover	1
16	620 201 4432	Filter	1
17	△ 620 201 8621	Power Trans,SEV,25VA	1
18	620 045 3035	Cover	1
19	620 050 4409	Mount P.C.B	4
20	620 053 2136	Bushing (MP4N-4)	1
21	620 117 2447	Bracket Cover	1
22	620 123 0284	SCR TPG BIN + M4.0X8	6
31	620 205 7187	Assy,PCB,Main	1
32	620 205 7194	Assy,PCB,FL Display	1
33	620 205 7200	Assy,PCB,Touch Switch	1
34	620 205 7217	Assy,PCB,Lamp	1
41	411 020 7007	SCR S-TPG BRZ 3X20	4
42	411 020 7700	SCR S-TPG BRZ 3X6	2
43	411 099 9704	SCR S-TPG BRZ 3X6	7
44	411 099 9803	SCR S-TPG BRZ 3X8	9
45	411 021 1202	SCR S-TPG BIN 2X8	7
46	411 021 3107	SCR S-TPG BIN 2.6X8	6
47	411 023 1002	SCR S-TPG PAN 2.6X10	4

PRODUCT SAFETY NOTICE

Each precaution in this manual should be followed during servicing. Components identified with the IEC symbol Δ in the parts list and the schematic diagram designate components in which safety can be of special significance. When replacing a component identified with Δ , use only the replacement parts designated, or parts with the same ratings of resistance, wattage or voltage that are designated in the parts list in this manual. Leakage-current or resistance measurements must be made to determine that exposed parts are acceptably insulated from the supply circuit before returning the product to the customer.

NOTES:

- Parts order must contain Model Number, Part Number and Description.
- Ordering quantity of screws and resistors must be multiple of 10 pcs.

P.C.BOARD PARTS LIST

Ref. No.	Part No.	Description	Q'ty	Ref. No.	Part No.	Description	Q'ty
ASSY,PCB,MAIN				D2	407 004 9105	DIODE DSF10C-BT	1
31	620 205 7187	Assy,PCB,Main	1	D3	407 004 9105	DIODE DSF10C-BT	1
	620 017 2738	Fuse Clip	8	D4	407 004 9105	DIODE DSF10C-BT	1
	620 022 2587	EC Terminal 1P	2	D5	407 004 9105	DIODE DSF10C-BT	1
	620 022 3508	Terminal Lug	2	D6	407 004 9105	DIODE DSF10C-BT	1
△	423 003 4101	FUSE 250V T0.4A	2	D7	407 050 0309	ZENER DIODE GZA27X-BT	1
△	423 004 6807	FUSE 250V T0.315A	1	D8	407 050 6806	ZENER DIODE GZA5.6Z-BT	1
△	423 006 4702	FUSE 250V T2.5A	1	D9	407 050 6301	ZENER DIODE GZA6.2Z-BT	1
	411 020 7700	SCR S-TPG BRZ 3X6	3	D10	407 049 7500	ZENER DIODE GZA16Y-BT	1
	620 201 6153	Jack,RCA PIN,4P,WH/RE	2	D11	407 049 7500	ZENER DIODE GZA16Y-BT	1
	620 202 4196	Terminal,Wrapper,3P	1	D12	407 050 6806	ZENER DIODE GZA7.5X-BT	1
	620 203 9909	Terminal,Wrapper,5P	1	D13	407 050 6806	ZENER DIODE GZA7.5X-BT	1
	620 031 4763	Wire Wrap Terminal	6	D14	407 005 3805	DIODE DS442-BT	1
	620 053 8848	Plate Heat Sink	1	D200	407 125 8209	DIODE HSS271	1
	620 053 9241	Plate Heat Sink	2	or	407 008 0405	DIODE GMB01-BT	1
CK300	620 007 3349	Ceramic,OSC CSA4.00	1	D201	407 125 8209	DIODE HSS271	1
PC1	620 196 2550	Connector-S,TKC-B06X-E1	1	or	407 008 0405	DIODE GMB01-BT	1
PC2	620 196 2574	Connector-S,TKC-B10X-E1	1	D202	407 125 8209	DIODE HSS271	1
PC3	620 196 2574	Connector-S,TKC-B10X-E1	1	or	407 008 0405	DIODE GMB01-BT	1
PC4	620 196 2574	Connector-S,TKC-B10X-E1	1	D203	407 125 8209	DIODE HSS271	1
PC5	620 196 2550	Connector-S,TKC-B06X-E1	1	or	407 008 0405	DIODE GMB01-BT	1
PC6	620 196 2574	Connector-S,TKC-B10X-E1	1	D204	407 125 8209	DIODE HSS271	1
RB100	620 196 5377	Resistor 7X1M P2.54	1	or	407 008 0405	DIODE GMB01-BT	1
RB101	620 196 5377	Resistor 7X1M P2.54	1	D205	407 125 8209	DIODE HSS271	1
RB300	620 004 5513	Resistor 7X10K	1	or	407 008 0405	DIODE GMB01-BT	1
RB301	620 004 5513	Resistor 7X10K	1	D206	407 125 8209	DIODE HSS271	1
RB302	620 004 5438	Resistor 8X10K J	1	or	407 008 0405	DIODE GMB01-BT	1
IC100	409 036 8101	IC M5229P	1	D207	407 125 8209	DIODE HSS271	1
IC101	409 036 8101	IC M5229P	1	or	407 008 0405	DIODE GMB01-BT	1
IC102	409 018 5104	IC LA6458SS	1	D208	407 125 8209	DIODE HSS271	1
IC103	409 018 5104	IC LA6458SS	1	or	407 008 0405	DIODE GMB01-BT	1
IC104	409 018 4503	IC LA6458DS	1	D209	407 125 8209	DIODE HSS271	1
IC105	409 018 4503	IC LA6458DS	1	or	407 008 0405	DIODE GMB01-BT	1
IC106	409 109 5204	IC LC7822	1	D211	407 125 8209	DIODE HSS271	1
IC107	409 088 3901	IC LC7520	1	or	407 008 0405	DIODE GMB01-BT	1
IC200	409 143 7004	IC BA14741	1	D212	407 125 8209	DIODE HSS271	1
IC201	409 143 7004	IC BA14741	1	or	407 008 0405	DIODE GMB01-BT	1
IC202	409 143 7004	IC BA14741	1	D213	407 125 8209	DIODE HSS271	1
IC203	409 143 7004	IC BA14741	1	or	407 008 0405	DIODE GMB01-BT	1
IC300	409 197 4103	IC LC6520C-4134	1	D214	407 125 8209	DIODE HSS271	1
TR1	405 035 7206	TR 2SD1913-S	1	or	407 008 0405	DIODE GMB01-BT	1
TR2	405 052 8101	TR 2SB1274-S	1	D215	407 125 8209	DIODE HSS271	1
TR3	405 035 7206	TR 2SD1913-S	1	or	407 008 0405	DIODE GMB01-BT	1
TR4	405 017 9600	TR 2SC3330-T-AC	1	D216	407 125 8209	DIODE HSS271	1
or	405 017 9501	TR 2SC3330-S-AC	1	or	407 008 0405	DIODE GMB01-BT	1
TR5	405 003 5302	TR 2SA1317-T-AC	1	D300	407 012 8503	DIODE 1SS53	1
or	405 003 5203	TR 2SA1317-S-AC	1	D301	407 125 8209	DIODE HSS271	1
TR6	405 052 8101	TR 2SB1274-S	1	or	407 008 0405	DIODE GMB01-BT	1
TR7	405 019 3903	TR 2SC536-G-SPA-AC	1	D302	407 125 8209	DIODE HSS271	1
or	405 019 2807	TR 2SC536-F-SPA-AC	1	or	407 008 0405	DIODE GMB01-BT	1
TR8	405 004 5103	TR 2SA608-G-SPA-AC	1	C1	404 012 7000	CERAMIC 0.01U P 500V	1
or	405 004 4601	TR 2SA608-F-SPA-AC	1	C2	404 012 7000	CERAMIC 0.01U P 500V	1
TR9	405 004 5103	TR 2SA608-G-SPA-AC	1	C3	404 012 7000	CERAMIC 0.01U P 500V	1
or	405 004 4601	TR 2SA608-F-SPA-AC	1	C4	404 012 7000	CERAMIC 0.01U P 500V	1
TR100	405 039 5802	TR 2SC3792	1	C5	403 052 9609	ELECT 1000U M 35V	1
TR101	405 039 5802	TR 2SC3792	1	C6	403 052 9609	ELECT 1000U M 35V	1
TR102	405 039 5802	TR 2SC3792	1	C7	403 121 0803	ELECT 220U M 63V	1
TR103	405 039 5802	TR 2SC3792	1	C8	403 053 7703	ELECT 330U M 35V	1
TR302	405 004 5103	TR 2SA608-G-SPA-AC	1	C9	403 054 1304	ELECT 47U M 35V	1
or	405 004 4601	TR 2SA608-F-SPA-AC	1	C11	403 054 1304	ELECT 47U M 35V	1
TR303	405 019 3903	TR 2SC536-G-SPA-AC	1	C12	403 045 0606	ELECT 100U M 25V	1
or	405 019 2807	TR 2SC536-F-SPA-AC	1	C13	403 054 1304	ELECT 47U M 35V	1
TR304	405 019 3903	TR 2SC536-G-SPA-AC	1	C14	403 045 0606	ELECT 100U M 25V	1
or	405 019 2807	TR 2SC536-F-SPA-AC	1	C15	403 039 7901	ELECT 100U M 10V	1
TR305	405 004 5103	TR 2SA608-G-SPA-AC	1	C18	403 042 3600	ELECT 100U M 16V	1
or	405 004 4601	TR 2SA608-F-SPA-AC	1	C19	403 043 1100	ELECT 220U M 16V	1
TR306	405 004 5103	TR 2SA608-G-SPA-AC	1	C20	403 042 3600	ELECT 100U M 16V	1
or	405 004 4601	TR 2SA608-F-SPA-AC	1	C21	403 038 2402	ELECT 100U M 6.3V	1
TR307	405 004 5103	TR 2SA608-G-SPA-AC	1	C22	403 042 3600	ELECT 100U M 16V	1
or	405 004 4601	TR 2SA608-F-SPA-AC	1	C23	403 042 3600	ELECT 100U M 16V	1
TR308	405 019 3903	TR 2SC536-G-SPA-AC	1	C28	403 042 3600	ELECT 100U M 16V	1
or	405 019 2807	TR 2SC536-F-SPA-AC	1	C29	403 042 3600	ELECT 100U M 16V	1
TR309	405 004 5103	TR 2SA608-G-SPA-AC	1	C30	403 042 3600	ELECT 100U M 16V	1
or	405 004 4601	TR 2SA608-F-SPA-AC	1	C33	403 044 0300	ELECT 47U M 16V	1
TR310	405 004 5103	TR 2SA608-G-SPA-AC	1	C34	403 044 0300	ELECT 47U M 16V	1
or	405 004 4601	TR 2SA608-F-SPA-AC	1	C35	403 042 0302	ELECT 10U M 16V	1
DT12	407 119 0004	THYRISTOR TLP3503	1	C36	403 033 7303	CERAMIC 82P K 50V	1
DT13	407 119 0004	THYRISTOR TLP3503	1	C37	403 033 7303	CERAMIC 82P K 50V	1
D1	407 004 9105	DIODE DSF10C-BT	1	C38	403 042 0302	ELECT 10U M 16V	1

P.C.BOARD PARTS LIST (Continued)

Ref. No.	Part No.	Description	Q'ty	Ref. No.	Part No.	Description	Q'ty
C39	403 042 0302	ELECT	10U M 16V	1	C216	403 062 0108	POLYESTER 0.047U J 50V
C40	403 049 1609	ELECT	1U M 50V	1	C217	403 057 0106	POLYESTER 0.01U J 50V
C100	403 067 7300	MT-COMPO	0.33U J 50V	1	C218	403 057 0106	POLYESTER 0.01U J 50V
C101	403 067 5900	MT-COMPO	0.12U J 50V	1	C219	403 061 1908	POLYESTER 3900P J 50V
C102	403 062 0108	POLYESTER	0.047U J 50V	1	C220	403 061 1908	POLYESTER 3900P J 50V
C103	403 059 5604	POLYESTER	0.022U J 50V	1	C221	403 058 0808	POLYESTER 1500P J 50V
C104	403 062 9705	POLYESTER	6800P J 50V	1	C222	403 058 0808	POLYESTER 1500P J 50V
C105	403 057 7204	POLYESTER	0.012U J 50V	1	C223	403 057 5606	POLYESTER 1200P J 50V
C106	403 060 7901	POLYESTER	0.033U J 50V	1	C224	403 057 5606	POLYESTER 1200P J 50V
C107	403 096 8507	POLYESTER	0.082U J 50V	1	C225	403 057 5606	POLYESTER 1200P J 50V
C108	403 067 6709	MT-COMPO	0.22U J 50V	1	C226	403 057 5606	POLYESTER 1200P J 50V
C109	403 067 8000	MT-COMPO	0.56U J 50V	1	C227	403 056 7601	POLYESTER 1000P J 50V
C110	403 057 5606	POLYESTER	1200P J 50V	1	C228	403 056 7601	POLYESTER 1000P J 50V
C111	403 059 3303	POLYESTER	2200P J 50V	1	C229	403 051 2007	ELECT 4.7U M 50V
C112	403 060 5808	POLYESTER	3300P J 50V	1	C230	403 050 1209	ELECT 2.2U M 50V
C113	403 062 4809	POLYESTER	5600P J 50V	1	C231	403 050 1209	ELECT 2.2U M 50V
C114	403 033 7303	CERAMIC	82P K 50V	1	C232	403 050 1209	ELECT 2.2U M 50V
C115	403 033 7303	CERAMIC	82P K 50V	1	C233	403 050 1209	ELECT 2.2U M 50V
C116	403 062 0108	POLYESTER	0.047U J 50V	1	C234	403 050 1209	ELECT 2.2U M 50V
C117	403 096 8507	POLYESTER	0.082U J 50V	1	C235	403 050 1209	ELECT 2.2U M 50V
C118	403 059 5604	POLYESTER	0.022U J 50V	1	C236	403 050 1209	ELECT 2.2U M 50V
C119	403 060 7901	POLYESTER	0.033U J 50V	1	C237	403 050 1209	ELECT 2.2U M 50V
C120	403 062 9705	POLYESTER	6800P J 50V	1	C242	403 050 1209	ELECT 2.2U M 50V
C121	403 057 7204	POLYESTER	0.012U J 50V	1	C243	403 050 1209	ELECT 2.2U M 50V
C122	403 060 5808	POLYESTER	3300P J 50V	1	C244	403 050 1209	ELECT 2.2U M 50V
C123	403 062 4809	POLYESTER	5600P J 50V	1	C245	403 050 1209	ELECT 2.2U M 50V
C124	403 057 5606	POLYESTER	1200P J 50V	1	C246	403 050 1209	ELECT 2.2U M 50V
C125	403 059 3303	POLYESTER	2200P J 50V	1	C247	403 050 1209	ELECT 2.2U M 50V
C126	403 067 5900	MT-COMPO	0.12U J 50V	1	C248	403 050 1209	ELECT 2.2U M 50V
C127	403 067 6709	MT-COMPO	0.22U J 50V	1	C249	403 050 1209	ELECT 2.2U M 50V
C128	403 067 7300	MT-COMPO	0.33U J 50V	1	C300	404 032 2207	ELECT 2200U M 10V
C129	403 067 8000	MT-COMPO	0.56U J 50V	1	C301	403 038 2402	ELECT 100U M 6.3V
C130	403 033 7303	CERAMIC	82P K 50V	1	C302	403 069 8404	CERAMIC 0.01U Z 50V
C131	403 033 7303	CERAMIC	82P K 50V	1	C303	403 040 8508	ELECT 33U M 10V
C132	403 042 0302	ELECT	10U M 16V	1	C305	403 038 2402	ELECT 100U M 6.3V
C133	403 042 0302	ELECT	10U M 16V	1	C306	403 049 1609	ELECT 1U M 50V
C134	403 018 8509	CERAMIC	220P K 50V	1	C307	403 047 9607	ELECT 0.1U M 50V
C135	403 018 8509	CERAMIC	220P K 50V	1	C309	403 022 5907	CERAMIC 33P J 50V
C136	403 018 8509	CERAMIC	220P K 50V	1	C310	403 022 5907	CERAMIC 33P J 50V
C137	403 018 8509	CERAMIC	220P K 50V	1	C311	403 069 8404	CERAMIC 0.01U Z 50V
C138	403 018 8509	CERAMIC	220P K 50V	1	C312	403 010 1805	CERAMIC 1000P K 50V
C139	403 018 8509	CERAMIC	220P K 50V	1	R2	401 063 4705	OXIDE-MT 8.2 JB 1W
C140	403 018 8509	CERAMIC	220P K 50V	1	R3	401 066 5105	OXIDE-MT 22 JB 2W
C141	403 018 8509	CERAMIC	220P K 50V	1	R4	401 066 5105	OXIDE-MT 22 JB 2W
C142	403 069 8404	CERAMIC	0.01U Z 50V	1	R5	401 059 6003	OXIDE-MT 18 JB 1W
C143	403 050 1209	ELECT	2.2U M 50V	1	R6	401 059 6003	OXIDE-MT 18 JB 1W
C144	403 050 1209	ELECT	2.2U M 50V	1	R7	401 016 2604	CARBON 220 JA 1/4W
C145	403 042 0302	ELECT	10U M 16V	1	R8	401 016 2604	CARBON 220 JA 1/4W
C146	403 042 0302	ELECT	10U M 16V	1	R9	401 016 2604	CARBON 220 JA 1/4W
C147	403 033 7303	CERAMIC	82P K 50V	1	R10	401 016 2604	CARBON 220 JA 1/4W
C148	403 033 7303	CERAMIC	82P K 50V	1	R11	401 012 5708	CARBON 1K JA 1/4W
C149	403 033 7303	CERAMIC	82P K 50V	1	R12	401 054 8002	OXIDE-MT 100 JB 1/2W
C150	403 033 7303	CERAMIC	82P K 50V	1	R13	401 016 3809	CARBON 2.2K JA 1/4W
C151	403 042 0302	ELECT	10U M 16V	1	R14	401 024 7707	CARBON 100K JA 1/6W
C152	403 042 0302	ELECT	10U M 16V	1	R15	401 012 8105	CARBON 100K JA 1/4W
C153	403 042 0302	ELECT	10U M 16V	1	R16	401 019 9600	CARBON 47 JA 1/4W
C154	403 042 0302	ELECT	10U M 16V	1	R17	401 019 9600	CARBON 47 JA 1/4W
C155	403 033 7303	CERAMIC	82P K 50V	1	R18	401 019 9600	CARBON 47 JA 1/4W
C156	403 033 7303	CERAMIC	82P K 50V	1	R19	401 019 9600	CARBON 47 JA 1/4W
C157	403 042 0302	ELECT	10U M 16V	1	R20	401 016 2604	CARBON 220 JA 1/4W
C158	403 042 0302	ELECT	10U M 16V	1	R21	401 018 2800	CARBON 330 JA 1/4W
C159	403 050 1209	ELECT	2.2U M 50V	1	R22	401 025 8703	CARBON 220K JA 1/6W
C160	403 050 1209	ELECT	2.2U M 50V	1	R23	401 025 8703	CARBON 220K JA 1/6W
C200	403 057 5606	POLYESTER	1200P J 50V	1	R24	401 026 9907	CARBON 4.7K JA 1/6W
C201	403 061 1908	POLYESTER	3900P J 50V	1	R25	401 026 9907	CARBON 4.7K JA 1/6W
C202	403 057 5606	POLYESTER	1200P J 50V	1	R27	401 014 2903	CARBON 150 JA 1/4W
C203	403 061 1908	POLYESTER	3900P J 50V	1	R28	401 014 2903	CARBON 150 JA 1/4W
C204	403 058 0808	POLYESTER	1500P J 50V	1	R29	401 016 2604	CARBON 220 JA 1/4W
C205	403 057 0106	POLYESTER	0.01U J 50V	1	R30	401 025 7409	CARBON 220 JA 1/6W
C206	403 058 0808	POLYESTER	1500P J 50V	1	R31	401 022 1905	CARBON 680 JA 1/4W
C207	403 057 0106	POLYESTER	0.01U J 50V	1	R32	401 022 1905	CARBON 680 JA 1/4W
C208	403 056 7601	POLYESTER	1000P J 50V	1	R35	401 016 2604	CARBON 220 JA 1/4W
C209	403 062 0108	POLYESTER	0.047U J 50V	1	R37	401 025 4200	CARBON 1.8K JA 1/6W
C210	403 056 7601	POLYESTER	1000P J 50V	1	R38	401 025 7805	CARBON 2.2K JA 1/6W
C211	403 062 0108	POLYESTER	0.047U J 50V	1	R43	401 024 7707	CARBON 100K JA 1/6W
C212	403 057 5606	POLYESTER	1200P J 50V	1	R100	401 025 7409	CARBON 220 JA 1/6W
C213	403 051 2007	ELECT	4.7U M 50V	1	R101	401 025 9502	CARBON 240 JA 1/6W
C214	403 057 5606	POLYESTER	1200P J 50V	1	R102	401 025 9502	CARBON 240 JA 1/6W
C215	403 062 0108	POLYESTER	0.047U J 50V	1	R103	401 025 9502	CARBON 240 JA 1/6W

P.C.BOARD PARTS LIST (Continued)

Ref. No.	Part No.	Description	Q'ty	Ref. No.	Part No.	Description	Q'ty
R104	401 025 9502	CARBON 240 JA 1/6W	1	R225	401 024 7707	CARBON 100K JA 1/6W	1
R105	401 025 9502	CARBON 240 JA 1/6W	1	R226	401 025 7805	CARBON 2.2K JA 1/6W	1
R106	401 025 9502	CARBON 240 JA 1/6W	1	R227	401 027 2600	CARBON 5.6K JA 1/6W	1
R107	401 024 9701	CARBON 12K JA 1/6W	1	R228	401 025 8703	CARBON 220K JA 1/6W	1
R108	401 025 9502	CARBON 240 JA 1/6W	1	R229	401 027 3201	CARBON 560K JA 1/6W	1
R109	401 025 9502	CARBON 240 JA 1/6W	1	R230	401 025 7409	CARBON 220 JA 1/6W	1
R110	401 025 9502	CARBON 240 JA 1/6W	1	R231	401 025 7409	CARBON 220 JA 1/6W	1
R111	401 025 9502	CARBON 240 JA 1/6W	1	R232	401 024 7707	CARBON 100K JA 1/6W	1
R112	401 025 9502	CARBON 240 JA 1/6W	1	R233	401 025 8703	CARBON 220K JA 1/6W	1
R113	401 025 9502	CARBON 240 JA 1/6W	1	R234	401 027 2600	CARBON 5.6K JA 1/6W	1
R114	401 025 7409	CARBON 220 JA 1/6W	1	R235	401 024 7400	CARBON 10K JA 1/6W	1
R115	401 024 9701	CARBON 12K JA 1/6W	1	R236	401 027 3201	CARBON 560K JA 1/6W	1
R116	401 025 8703	CARBON 220K JA 1/6W	1	R237	401 024 8001	CARBON 1M JA 1/6W	1
R117	401 016 5803	CARBON 220K JA 1/4W	1	R238	401 025 7409	CARBON 220 JA 1/6W	1
R118	401 024 7004	CARBON 1K JA 1/6W	1	R239	401 025 7409	CARBON 220 JA 1/6W	1
R119	401 024 7004	CARBON 1K JA 1/6W	1	R240	401 025 7409	CARBON 220 JA 1/6W	1
R120	401 024 7004	CARBON 1K JA 1/6W	1	R241	401 025 8703	CARBON 220K JA 1/6W	1
R121	401 024 7004	CARBON 1K JA 1/6W	1	R242	401 025 2305	CARBON 150K JA 1/6W	1
R122	401 024 7004	CARBON 1K JA 1/6W	1	R243	401 024 7400	CARBON 10K JA 1/6W	1
R123	401 024 7004	CARBON 1K JA 1/6W	1	R244	401 024 7400	CARBON 10K JA 1/6W	1
R124	401 024 7004	CARBON 1K JA 1/6W	1	R245	401 024 8001	CARBON 1M JA 1/6W	1
R125	401 024 7004	CARBON 1K JA 1/6W	1	R246	401 024 8001	CARBON 1M JA 1/6W	1
R126	401 025 8703	CARBON 220K JA 1/6W	1	R247	401 025 7409	CARBON 220 JA 1/6W	1
R127	401 025 8703	CARBON 220K JA 1/6W	1	R248	401 025 7409	CARBON 220 JA 1/6W	1
R128	401 025 8703	CARBON 220K JA 1/6W	1	R249	401 026 4605	CARBON 33K JA 1/6W	1
R129	401 025 8703	CARBON 220K JA 1/6W	1	R250	401 025 7805	CARBON 2.2K JA 1/6W	1
R130	401 025 8703	CARBON 220K JA 1/6W	1	R251	401 025 8703	CARBON 220K JA 1/6W	1
R131	401 025 8703	CARBON 220K JA 1/6W	1	R252	401 025 7409	CARBON 220 JA 1/6W	1
R132	401 025 8703	CARBON 220K JA 1/6W	1	R253	401 024 7400	CARBON 10K JA 1/6W	1
R133	401 025 8703	CARBON 220K JA 1/6W	1	R254	401 024 7004	CARBON 1K JA 1/6W	1
R134	401 012 5708	CARBON 1K JA 1/4W	1	R255	401 024 7707	CARBON 100K JA 1/6W	1
R135	401 024 7004	CARBON 1K JA 1/6W	1	R256	401 025 7409	CARBON 220 JA 1/6W	1
R136	401 012 5708	CARBON 1K JA 1/4W	1	R257	401 025 1902	CARBON 15K JA 1/6W	1
R137	401 012 5708	CARBON 1K JA 1/4W	1	R258	401 025 8208	CARBON 22K JA 1/6W	1
R138	401 024 7707	CARBON 100K JA 1/6W	1	R259	401 025 7409	CARBON 220 JA 1/6W	1
R139	401 024 7707	CARBON 100K JA 1/6W	1	R260	401 025 1902	CARBON 15K JA 1/6W	1
R140	401 025 7805	CARBON 2.2K JA 1/6W	1	R261	401 025 8208	CARBON 22K JA 1/6W	1
R141	401 025 7805	CARBON 2.2K JA 1/6W	1	R300	401 017 0807	CARBON 270 JA 1/4W	1
R142	401 025 7805	CARBON 2.2K JA 1/6W	1	R301	401 017 0807	CARBON 270 JA 1/4W	1
R143	401 025 7805	CARBON 2.2K JA 1/6W	1	R302	401 012 8105	CARBON 100K JA 1/4W	1
R144	401 025 8703	CARBON 220K JA 1/6W	1	R303	401 026 0607	CARBON 270 JA 1/6W	1
R145	401 025 8703	CARBON 220K JA 1/6W	1	R304	401 026 0607	CARBON 270 JA 1/6W	1
R146	401 024 7004	CARBON 1K JA 1/6W	1	R305	401 026 0607	CARBON 270 JA 1/6W	1
R147	401 024 7004	CARBON 1K JA 1/6W	1	R306	401 026 0607	CARBON 270 JA 1/6W	1
R148	401 025 8703	CARBON 220K JA 1/6W	1	R307	401 024 7400	CARBON 10K JA 1/6W	1
R149	401 025 8703	CARBON 220K JA 1/6W	1	R308	401 024 7400	CARBON 10K JA 1/6W	1
R150	401 024 9701	CARBON 12K JA 1/6W	1	R309	401 024 7400	CARBON 10K JA 1/6W	1
R151	401 024 9701	CARBON 12K JA 1/6W	1	R310	401 026 4605	CARBON 33K JA 1/6W	1
R152	401 027 0309	CARBON 47K JA 1/6W	1	R311	401 021 4105	CARBON 56K JA 1/4W	1
R153	401 027 0309	CARBON 47K JA 1/6W	1	R312	401 027 0507	CARBON 470K JA 1/6W	1
R154	401 025 8703	CARBON 220K JA 1/6W	1	R313	401 024 6700	CARBON 100 JA 1/6W	1
R155	401 025 8703	CARBON 220K JA 1/6W	1	R314	401 024 7400	CARBON 10K JA 1/6W	1
R156	401 024 9701	CARBON 12K JA 1/6W	1	R315	401 026 9600	CARBON 470 JA 1/6W	1
R157	401 024 9701	CARBON 12K JA 1/6W	1	R316	401 024 7400	CARBON 10K JA 1/6W	1
R200	401 024 7707	CARBON 100K JA 1/6W	1	R317	401 026 7408	CARBON 39K JA 1/6W	1
R201	401 025 8703	CARBON 220K JA 1/6W	1	R318	401 024 7707	CARBON 100K JA 1/6W	1
R202	401 027 2600	CARBON 5.6K JA 1/6W	1	R319	401 012 7009	CARBON 10K JA 1/4W	1
R203	401 024 7400	CARBON 10K JA 1/6W	1	R320	401 024 7400	CARBON 10K JA 1/6W	1
R204	401 027 3201	CARBON 560K JA 1/6W	1	R321	401 012 7009	CARBON 10K JA 1/4W	1
R205	401 024 8001	CARBON 1M JA 1/6W	1	R322	401 012 8105	CARBON 100K JA 1/4W	1
R206	401 025 7409	CARBON 220 JA 1/6W	1	R323	401 025 7805	CARBON 2.2K JA 1/6W	1
R207	401 025 7409	CARBON 220 JA 1/6W	1	R324	401 024 7400	CARBON 10K JA 1/6W	1
R208	401 025 2305	CARBON 150K JA 1/6W	1	R325	401 013 4205	CARBON 120 JA 1/4W	1
R209	401 025 8703	CARBON 220K JA 1/6W	1	R326	401 024 7400	CARBON 10K JA 1/6W	1
R210	401 024 7400	CARBON 10K JA 1/6W	1				
R211	401 024 7400	CARBON 10K JA 1/6W	1				
R212	401 024 8001	CARBON 1M JA 1/6W	1				
R213	401 024 8001	CARBON 1M JA 1/6W	1				
R214	401 025 7409	CARBON 220 JA 1/6W	1				
R215	401 025 7409	CARBON 220 JA 1/6W	1				
R216	401 024 7400	CARBON 10K JA 1/6W	1				
R217	401 024 7707	CARBON 100K JA 1/6W	1				
R218	401 024 7004	CARBON 1K JA 1/6W	1				
R219	401 027 2600	CARBON 5.6K JA 1/6W	1				
R220	401 024 7707	CARBON 100K JA 1/6W	1				
R221	401 027 3201	CARBON 560K JA 1/6W	1				
R222	401 025 7409	CARBON 220 JA 1/6W	1				
R223	401 025 7409	CARBON 220 JA 1/6W	1				
R224	401 026 4605	CARBON 33K JA 1/6W	1				
				ASSY,PCB,FL DISPLAY			
				32	620 205 7194	Assy,PCB,FL Display	1
					620 201 4487	Spacer,LED	1
					620 198 0301	Fluorescent Tube,BG-735GK	2
					620 200 0909	Converter,Remote,DET	1
					620 125 8752	Staple 15mm	1
					620 125 8813	Staple 20mm	1
					411 021 0809	SCR S-TPG BIN 2X6	8
				PA1	620 206 0286	Connector-P,8P	1
				PA2	620 206 0286	Connector-P,8P	1
				PD1	620 197 2061	Connector-P TKC-B06P-G1	1
				PD2	620 197 2078	Connector-P TKC-B10P-G1	1
				PD3	620 197 2078	Connector-P TKC-B10P-G1	1
				PD4	620 197 2078	Connector-P TKC-B10P-G1	1

P.C.BOARD PARTS LIST (Continued)

Ref. No.	Part No.	Description	Q'ty	Ref. No.	Part No.	Description	Q'ty
PD5	620 197 2061	Connector-P TKC-B06P-G1	1	SW605	620 016 7796	Tact Switch (UP F6)	1
PD6	620 197 2078	Connector-P TKC-B10P-G1	1	SW606	620 016 7796	Tact Switch (UP F7)	1
RB500	620 004 5704	Resistor 13X100K	1	SW607	620 016 7796	Tact Switch (DOWN F1)	1
RB501	620 004 5704	Resistor 13X100K	1	SW608	620 016 7796	Tact Switch (DOWN F2)	1
RB502	620 004 5698	Resistor 7X100K	1	SW609	620 016 7796	Tact Switch (DOWN F3)	1
RB503	620 004 5698	Resistor 7X100K	1	SW610	620 016 7796	Tact Switch (DOWN F4)	1
RB504	620 004 5605	Resistor 8X100K J	1	SW611	620 016 7796	Tact Switch (DOWN F5)	1
RB505	620 004 5605	Resistor 8X100K J	1	SW612	620 016 7796	Tact Switch (DOWN F6)	1
SW500	620 016 7796	Tact Switch (POWER ON/OFF)	1	SW613	620 016 7796	Tact Switch (DOWN F7)	1
VR500	620 207 2227	VR, Rotary 2X10KB	1	SW614	620 016 7796	Tact Switch (LEFT)	1
IC500	409 088 5806	IC LC7565	1	SW615	620 016 7796	Tact Switch (L + R)	1
IC501	409 088 5806	IC LC7565	1	SW616	620 016 7796	Tact Switch (RIGHT)	1
IC502	409 050 9009	IC TC4013BP	1	SW617	620 016 7796	Tact Switch (MODE)	1
IC503	409 050 8309	IC TC4011BP	1	SW618	620 016 7796	Tact Switch (MEMORY)	1
TR500	405 019 3903	TR 2SC536-G-SPA-AC	1	SW619	620 015 1917	Keyboard Switch 6 mm (A)	1
or	405 019 2807	TR 2SC536-F-SPA-AC	1	SW620	620 015 1917	Keyboard Switch 6 mm (B)	1
TR501	405 019 3903	TR 2SC536-G-SPA-AC	1	SW621	620 015 1917	Keyboard Switch 6 mm (C)	1
or	405 019 2807	TR 2SC536-F-SPA-AC	1	SW622	620 015 1917	Keyboard Switch 6 mm (D)	1
TR502	405 004 5103	TR 2SA608-G-SPA-AC	1	SW623	620 015 1917	Keyboard Switch 6 mm (E)	1
or	405 004 4601	TR 2SA608-F-SPA-AC	1	SW624	620 016 7796	Tact Switch (DISPLAY)	1
TR503	405 004 5103	TR 2SA608-G-SPA-AC	1	SW625	620 016 7796	Tact Switch (TAPE/LINE)	1
or	405 004 4601	TR 2SA608-F-SPA-AC	1	SW626	620 016 7796	Tact Switch (EQ)	1
DL500	407 062 7204	LED SEL2213C (RIGHT)	1	SW627	620 016 7796	Tact Switch (REC)	1
DL501	407 062 7204	LED SEL2213C (LEFT)	1	SW628	620 016 7796	Tact Switch (FLAT)	1
DL502	407 062 7204	LED SEL2213C (LINE)	1	SW629	620 015 1917	Keyboard Switch 6 mm (DIMMER)	1
DL503	407 062 7204	LED SEL2213C (TAPE)	1	SW630	620 015 1917	Keyboard Switch 6 mm (PEAK HOLD)	1
DL504	407 062 7204	LED SEL2213C (REC)	1				
DL505	407 062 7204	LED SEL2213C (EQ)	1				
D500	407 005 3805	DIODE DS442-BT	1				
D501	407 125 8209	DIODE HSS271	1				
or	407 008 0405	DIODE GMB01-BT	1				
C500	403 038 2402	ELECT 100U M 6.3V	1				
C501	403 038 2402	ELECT 100U M 6.3V	1				
C502	403 001 1906	CERAMIC 0.01U M 16V	1				
C503	403 001 1906	CERAMIC 0.01U M 16V	1				
C504	403 040 8508	ELECT 33U M 10V	1				
C505	403 040 8508	ELECT 33U M 10V	1				
C506	403 040 8508	ELECT 33U M 10V	1				
C507	403 040 8508	ELECT 33U M 10V	1				
C508	403 001 4006	CERAMIC 1500P M 16V	1				
C509	403 001 4006	CERAMIC 1500P M 16V	1				
C510	403 068 9402	CERAMIC 100P K 50V	1				
C511	403 068 9402	CERAMIC 100P K 50V	1				
C512	403 038 2303	ELECT 100U M 6.3V	1				
R500	401 018 1605	CARBON 33 JA 1/4W	1				
R501	401 018 1605	CARBON 33 JA 1/4W	1				
R502	401 024 7707	CARBON 100K JA 1/6W	1				
R503	401 024 7707	CARBON 100K JA 1/6W	1				
R504	401 024 7707	CARBON 100K JA 1/6W	1				
R505	401 024 7707	CARBON 100K JA 1/6W	1				
R506	401 025 4606	CARBON 18K JA 1/6W	1				
R507	401 025 4606	CARBON 18K JA 1/6W	1				
R508	401 012 8105	CARBON 100K JA 1/4W	1				
R509	401 012 8105	CARBON 100K JA 1/4W	1				
R510	401 012 8105	CARBON 100K JA 1/4W	1				
R511	401 012 8105	CARBON 100K JA 1/4W	1				
R512	401 024 7400	CARBON 10K JA 1/6W	1				
R513	401 024 7400	CARBON 10K JA 1/6W	1				
R514	401 012 8105	CARBON 100K JA 1/4W	1				
R515	401 024 7707	CARBON 100K JA 1/6W	1				
R516	401 024 7400	CARBON 10K JA 1/6W	1				
R517	401 012 7009	CARBON 10K JA 1/4W	1				
R518	401 024 7400	CARBON 10K JA 1/6W	1				
R519	401 024 7400	CARBON 10K JA 1/6W	1				
R520	401 027 0309	CARBON 47K JA 1/6W	1				
R521	401 027 0309	CARBON 47K JA 1/6W	1				
R522	401 027 0309	CARBON 47K JA 1/6W	1				
R523	401 027 0309	CARBON 47K JA 1/6W	1				
R524	401 012 4503	CARBON 100 JA 1/4W	1				
ASSY,PCB,TOUCH SWITCH							
33	620 205 7200	Assy,PCB,Touch Switch	1				
PB1	620 206 0293	Connector-S,8P	1				
PB2	620 206 0293	Connector-S,8P	1				
SW600	620 016 7796	Tact Switch (UP F1)	1				
SW601	620 016 7796	Tact Switch (UP F2)	1				
SW602	620 016 7796	Tact Switch (UP F3)	1				
SW603	620 016 7796	Tact Switch (UP F4)	1				
SW604	620 016 7796	Tact Switch (UP F5)	1				
ASSY,PCB,LAMP							
34	620 205 7217	Assy,PCB,Lamp	1				
	620 030 8083	Lamp	1				

NOTES:

1. Parts order must contain Model Number, Part Number and Description.
2. Ordering quantity of screws and resistors must be multiple of 10 pcs.

PRODUCT SAFETY NOTICE

Each precaution in this manual should be followed during servicing. Components identified with the IEC symbol Δ in the parts list and the schematic diagram designate components in which safety can be of special significance. When replacing a component identified with Δ , use only the replacement parts designated, or parts with the same ratings of resistance, wattage or voltage that are designated in the parts list in this manual. Leakage-current or resistance measurements must be made to determine that exposed parts are acceptably insulated from the supply circuit before returning the product to the customer.

IC & TRANSISTOR DC VOLTAGES

IC PIN NUMBERS DC VOLTAGES																						
Ref. No.	DEVICE	1	2	3	4	5	6	7	8	9	10	11	12	13	14	15	16	17	18	19	20	
IC100,101	M5229P	0V	0V	0V	0V	0V	0V	0V	0V	0V	0V	0V	0V	0V	0V	0V	0V	0V	0V	16.4V	0V	-16.7V
IC102	LA6458SS	6.9V	0.1V	0.2V	0V	0.2V	0V	0V	0V	6.9V	-	-	-	-	-	-	-	-	-	-	-	
IC103	LA6458SS	15.8V	0V	0V	0V	-16.1V	0V	0V	0V	15.8V	-	-	-	-	-	-	-	-	-	-	-	
IC104	LA6458DS	0V	0V	0V	-16.1V	0V	0V	0V	15.8V	-	-	-	-	-	-	-	-	-	-	-	-	
IC105	LA6458DS	0V	0V	0V	-16.5V	0V	0V	0V	16.2V	-	-	-	-	-	-	-	-	-	-	-	-	

IC PIN NUMBERS DC VOLTAGES																						
Ref. No.	DEVICE	1	2	3	4	5	6	7	8	9	10	11	12	13	14	15	16	17	18	19	20	
IC106	LC7822	0V	0V	0V	0V	0V	0V	0V	0V	0V	0V	0V	0V	-16.1V	0V	0V	0V	0V	0V	15.6V	15.8V	0.1V
		21	22	23	24	25	26	27	28	29	30	31	32	33	34	35	36	37	38	39	40	
		0V	0V	0V	0V	0V	0V	0V	0V	0V	0V	0V	0V	-	-	-	-	-	-	-	-	-

IC PIN NUMBERS DC VOLTAGES																						
Ref. No.	DEVICE	1	2	3	4	5	6	7	8	9	10	11	12	13	14	15	16	17	18	19	20	
IC107	LC7520	0V	0V	0V	0V	0V	0V	0V	0V	0V	16.1V	9.1V	9.0V	5.8V	9.0V	15.9V	0V	0V	0V	-17.3V	0V	
		21	22	23	24	25	26	27	28	29	30	31	32	33	34	35	36	37	38	39	40	
		0V	0V	0V	0V	0V	0V	0V	0V	0V	-	-	-	-	-	-	-	-	-	-	-	-

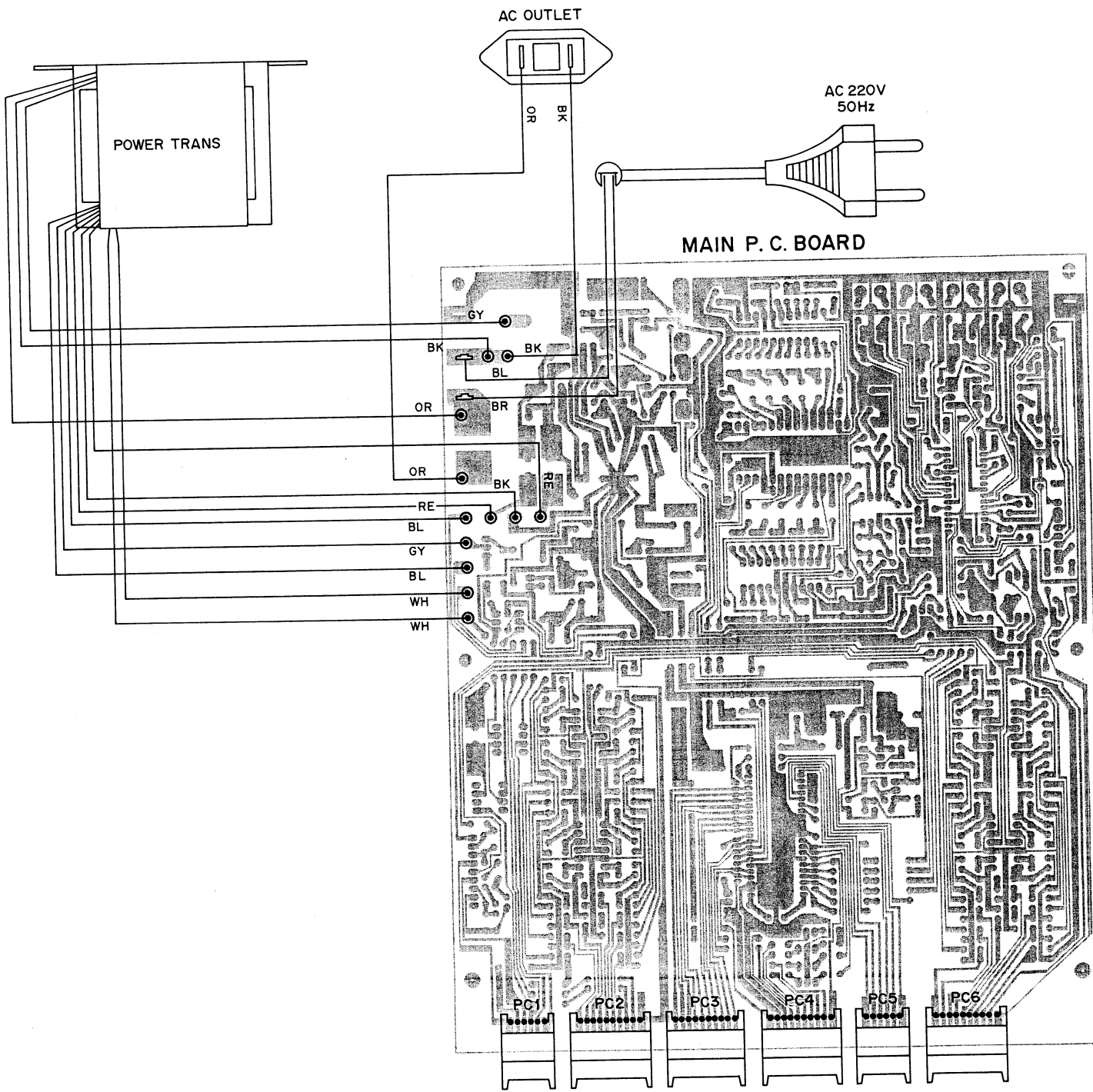
IC PIN NUMBERS DC VOLTAGES																					
Ref. No.	DEVICE	1	2	3	4	5	6	7	8	9	10	11	12	13	14	15	16	17	18	19	20
IC200~203	BA14741	0V	0V	0V	6.9V	0V	0V	0V	0V	0V	0V	-6.7V	0V	0V	0V	-	-	-	-	-	-

IC PIN NUMBERS DC VOLTAGES																						
Ref. No.	DEVICE	1	2	3	4	5	6	7	8	9	10	11	12	13	14	15	16	17	18	19	20	
IC300	LC6520C	5.1V	5.1V	5.1V	5.1V	5.1V	5.1V	3.3V	3.6V	4.0V	4.3V	5.8V	0V	0V	5.8V	0V	0V	5.8V	0.3V	0V	0V	
		21	22	23	24	25	26	27	28	29	30	31	32	33	34	35	36	37	38	39	40	
		2.2V	1.7V	5.0V	0V	0V	0V	5.7V	0V	0V	5.8V	5.8V	0V	0V	0V	0V	0V	5.2V	5.1V	5.1V	5.1V	
		41	42	43	44	45	46	47	48	49	50	51	52	53	54	55	56	57	58	59	60	
		5.1V	5.1V	-	-	-	-	-	-	-	-	-	-	-	-	-	-	-	-	-	-	

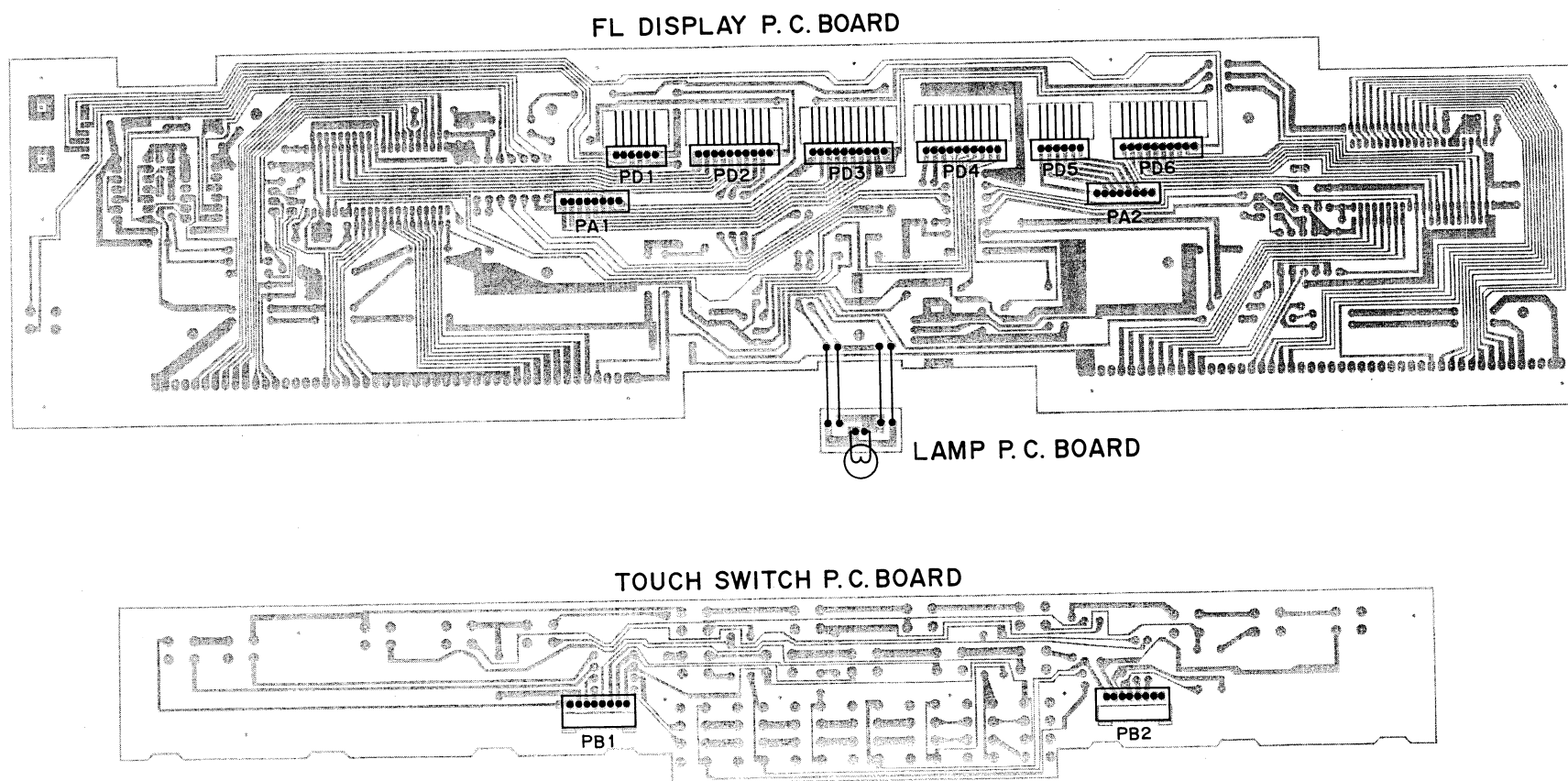
IC PIN NUMBERS DC VOLTAGES																						
Ref. No.	DEVICE	1	2	3	4	5	6	7	8	9	10	11	12	13	14	15	16	17	18	19	20	
IC500,501	LC7565	5.7V	-22.9V	-26.4V	-26.3V	-23.0V	-26.4V	-26.4V	-3.7V	-26.4V	-23.0V	-26.4V	-26.4V	-26.4V	-23.0V	0V	0V	0V	0V	0V	4.4V	
		21	22	23	24	25	26	27	28	29	30	31	32	33	34	35	36	37	38	39	40	
		0V	0V	0V	0V	0V	0V	0V	0V	0V	0V	0V	0V	0V	-25.4V	0.3V	-25.6V	-25.6V	-25.6V	-25.6V	-25.6V	-25.6V
		41	42	43	44	45	46	47	48	49	50	51	52	53	54	55	56	57	58	59	60	
		-25.6V	5.7V	-	-	-	-	-	-	-	-	-	-	-	-	-	-	-	-	-	-	

IC PIN NUMBERS DC VOLTAGES																					
Ref. No.	DEVICE	1	2	3	4	5	6	7	8	9	10	11	12	13	14	15	16	17	18	19	20
IC502	TC4013BP	0.5V	5.2V	0.3V	0.1V	5.2V	0V	0V	0V	5.2V	0.1V	0.3V	5.2V	0.5V	5.8V	-	-	-	-	-	-
IC503	TC4011BP	0.3V	0.5V	5.7V	5.8V	0V	0V	0V	0V	0V	5.8V	5.7V	0.5V	0.3V	5.8V	-	-	-	-	-	-

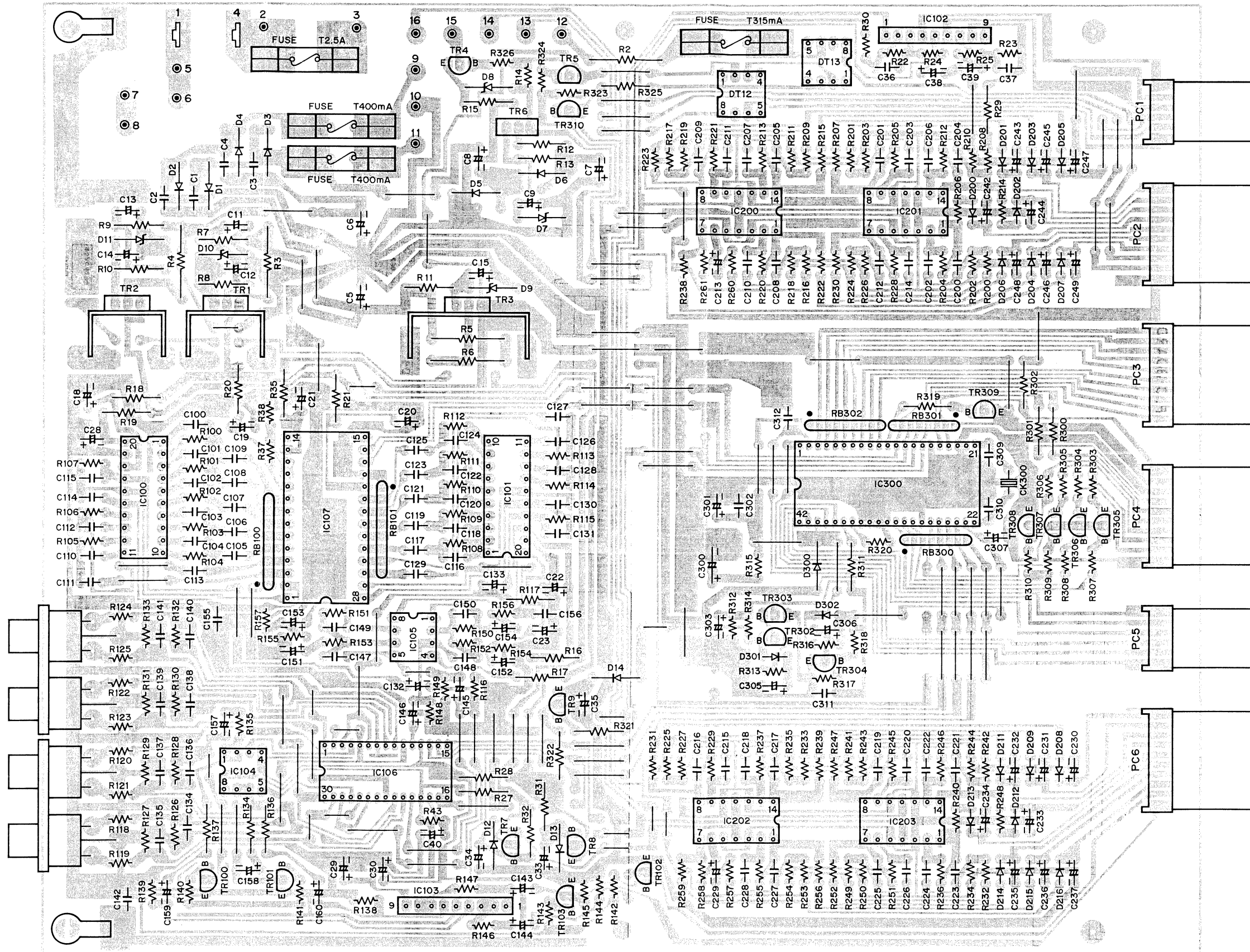
TRANSISTOR DC VOLTAGES									
Ref. No.	DEVICE	B	C	E	Ref. No.	DEVICE	B	C	E
TR1	2SD1913	17.5V	23.2V	16.9V	TR5	2SA1317	5.2V	5.8V	5.8V
TR2	2SB1274	-17.8V	-24.7V	-17.2V	TR6	2SB1274	-27.2V	-49.5V	-26.7V
TR3	2SD1913	6.4V	23.0V	5.8V	TR7	2SC536	7.5V	16.9V	6.9V
TR4	2SC3330	-20.0V	-20.7V	-20.8V	TR8	2SA608	-7.4V	-17.2V	-6.7V



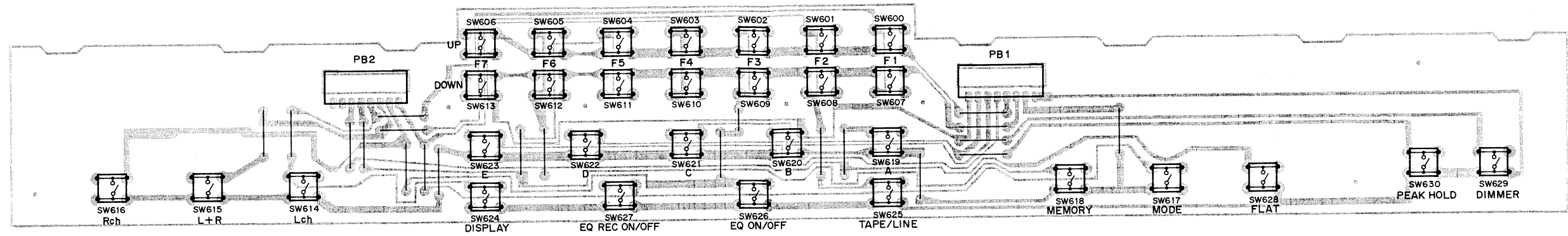
WIRING DIAGRAM



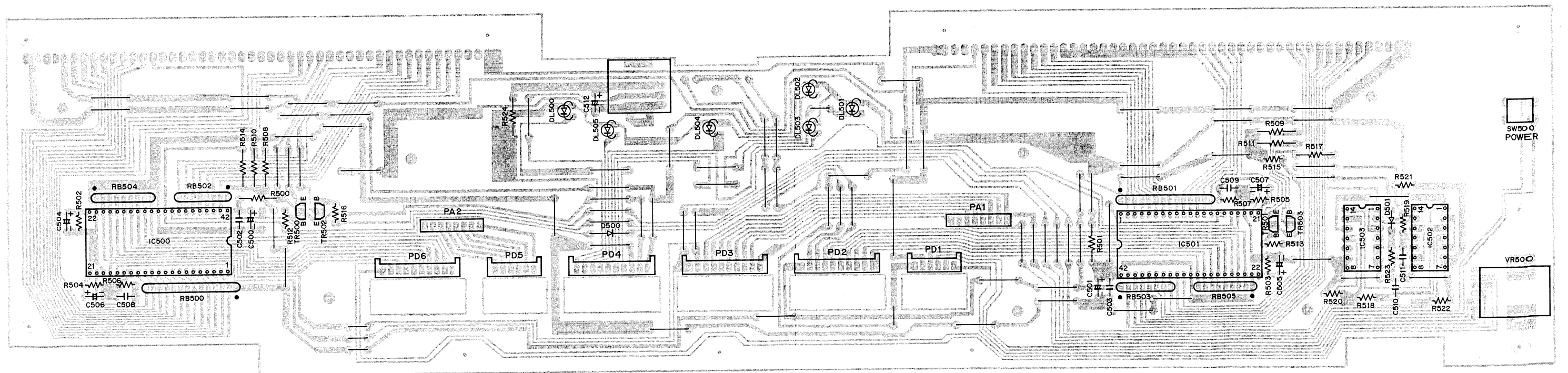
MAIN P.C. BOARD (BOTTOM VIEW)



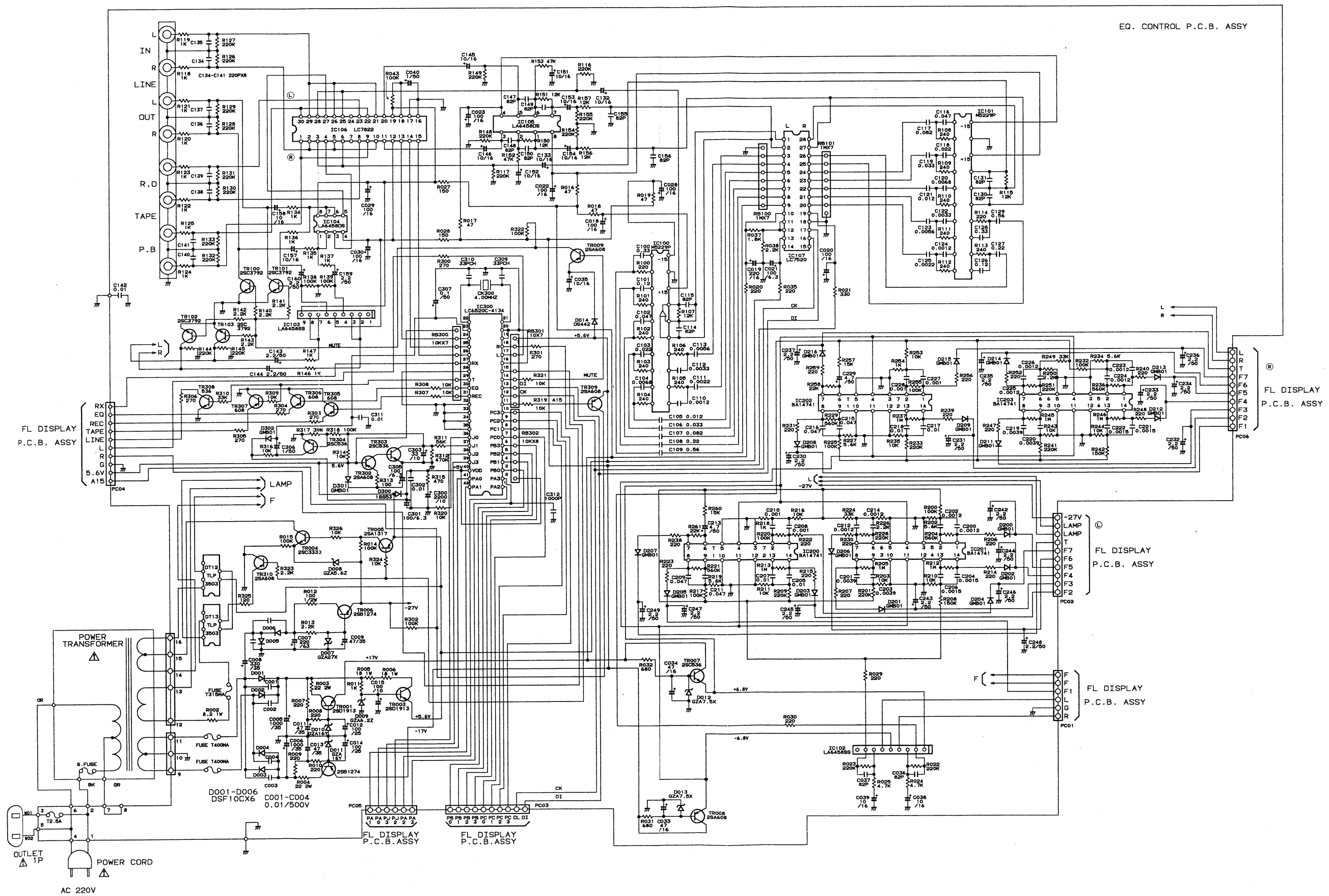
**TOUCH SWITCH P.C.BOARD
(BOTTOM VIEW)**



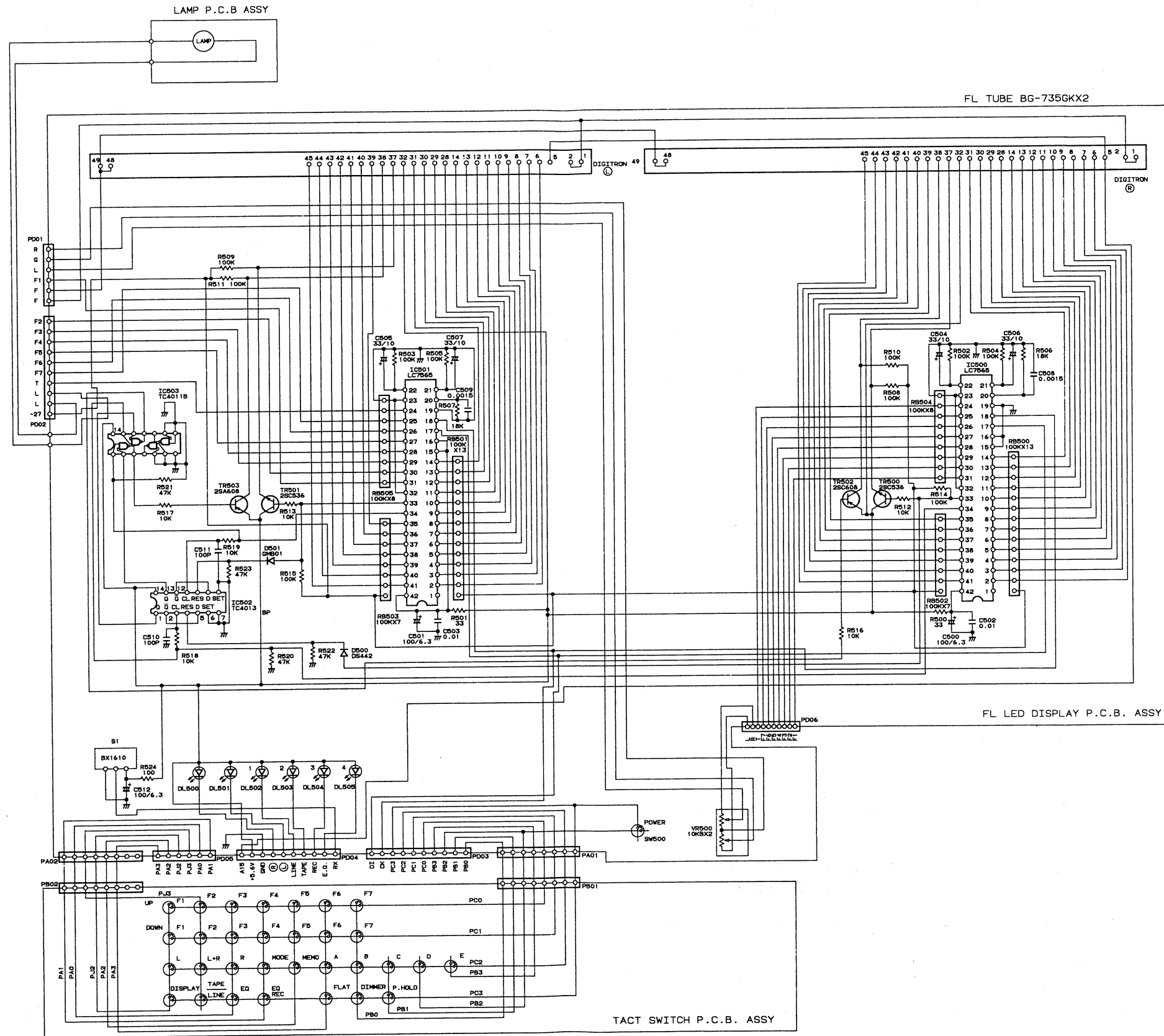
**FL DISPLAY P.C.BOARD
(BOTTOM VIEW)**



SCHEMATIC DIAGRAM (1)



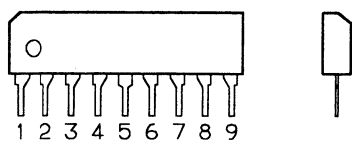
SCHEMATIC DIAGRAM (2)



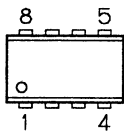
IC & TRANSISTOR LEAD IDENTIFICATION

TRANSISTOR	FRONT VIEW	BOTTOM VIEW	TRANSISTOR	FRONT VIEW	BOTTOM VIEW
2SC3792			2SB1274 2SD1913		
2SA1317 2SA608 2SC3330 2SC536					
TERMINAL NAME					
B → BASE C → COLLECTOR E → EMITTER					

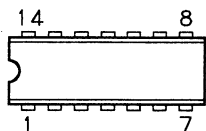
LA6458SS FRONT/SIDE VIEWS



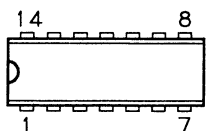
LA6458DS TOP VIEW



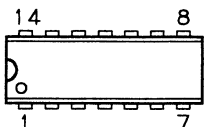
TC4013BP TOP VIEW



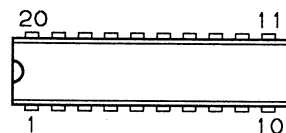
BA14741 TOP VIEW



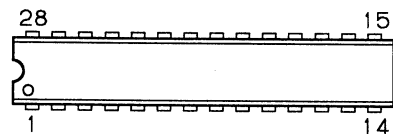
TC4011BP TOP VIEW



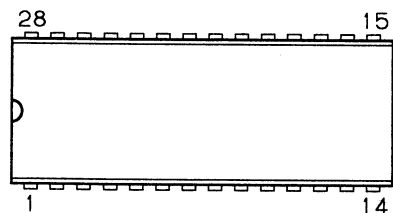
M5229P TOP VIEW



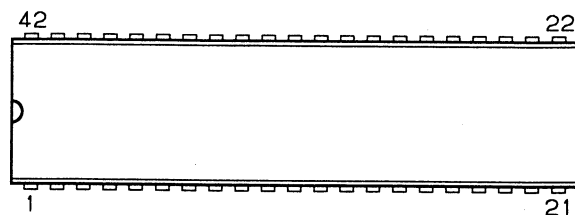
LC7822 TOP VIEW



LC7520 TOP VIEW

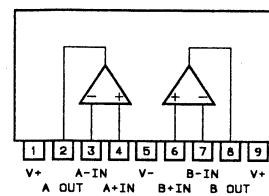


**LC6520C-4134 TOP VIEW
LC7565 TOP VIEW**

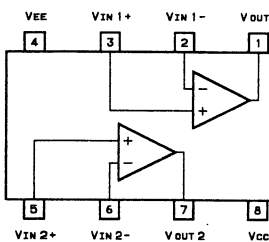


IC BLOCK DIAGRAM

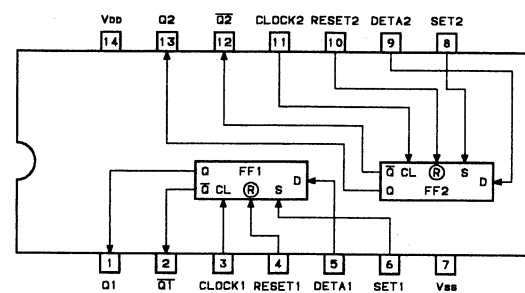
LA6458SS BLOCK DIAGRAM



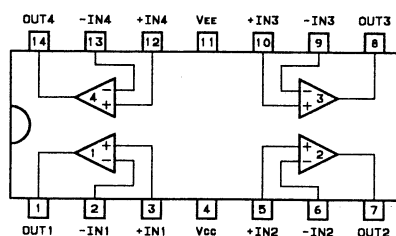
LA6458DS BLOCK DIAGRAM



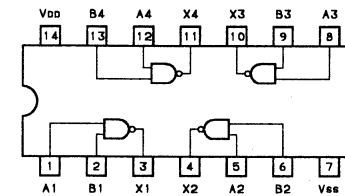
TC4013BP BLOCK DIAGRAM



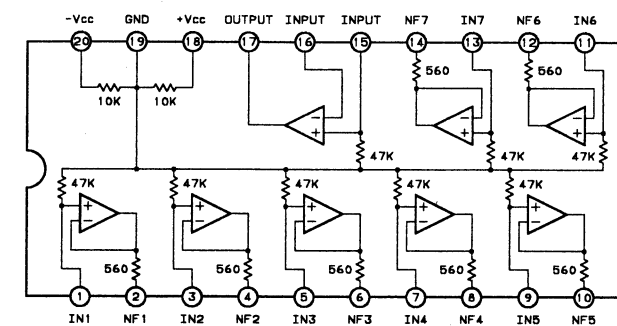
BA14741 BLOCK DIAGRAM



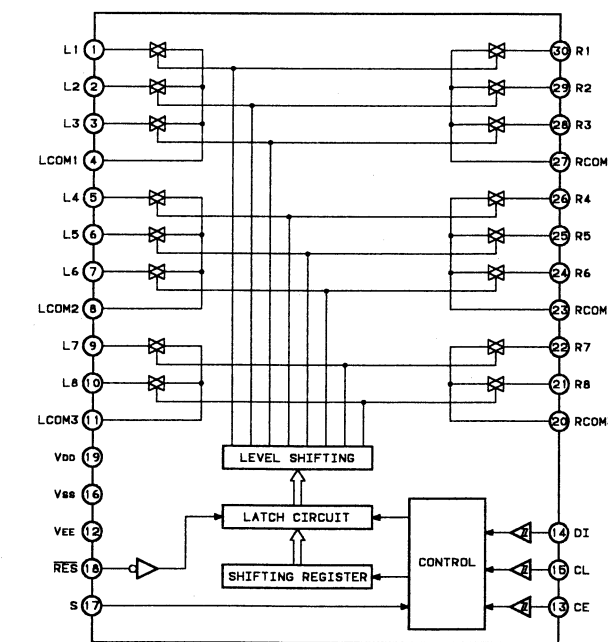
TC4011BP BLOCK DIAGRAM



M5229P BLOCK DIAGRAM

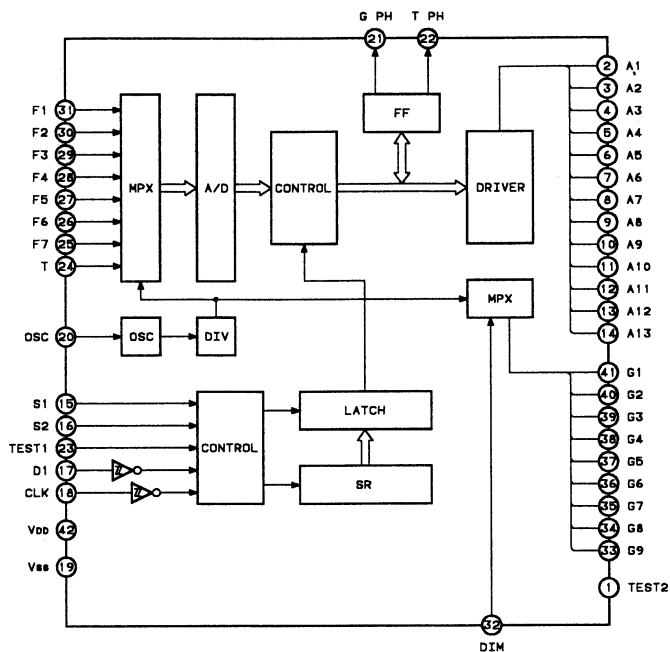


LC7822 BLOCK DIAGRAM

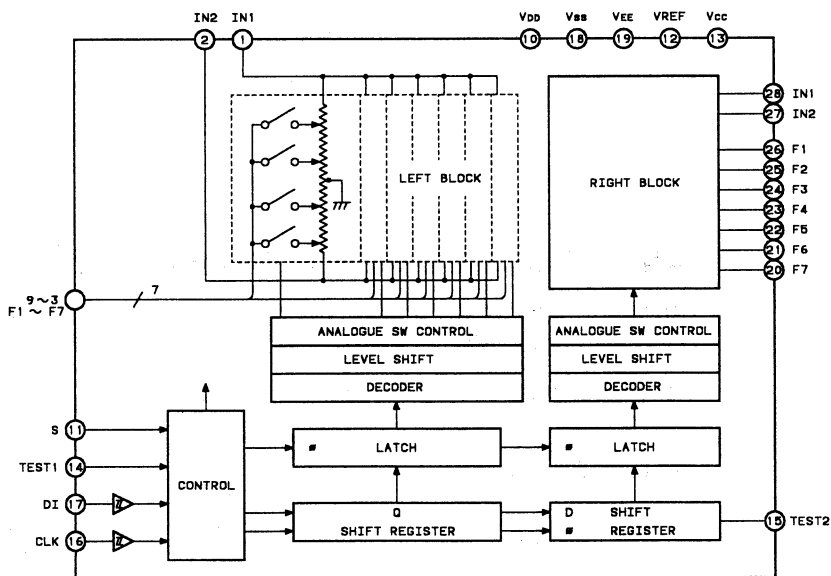


IC BLOCK DIAGRAM (Continued)

LC7565 BLOCK DIAGRAM



LC7520 BLOCK DIAGRAM



SANYO FISHER Vertriebs GmbH

Stahlgruberring 4 Tel: 089/420 45-0
8000 München 82 Tlx: 524033

Technisches Labor/ Durchwahl -122/121
Qualitätskontrolle

Service-Zentrale

Color TV	-166
Hi-Fi/Audio	-168
Video	-172
Autoradio	-170
Ersatzteillager	-155/156/160/164
Techn. Schulung	-174

Unser FISHER-Team steht Ihnen jederzeit gerne zur Verfügung. Ersatzteilbestellungen wickeln Sie bitte ausschließlich mit unserer Service-Zentrale München ab.

Senden Sie uns im Garantiefall Ihren Kaufbeleg ein. Bei unverkauften Lagergeräten des Fachhandels gilt als Garantienachweis eine eidesstattliche Versicherung mit eingetragener Modellbezeichnung und Geräte-Nummer oder ein Liefernachweis. Die gleiche Regelung besteht auch für Reparaturaufträge.

Bitte geben Sie unbedingt die Ersatzteil-Nummer und die Modellbezeichnung an.

Sie sparen so wertvolle Zeit. Vielen Dank.