



# SERVICE MANUAL

# CDX-601-602

## Compact Disc Players



### CONTENT'S:

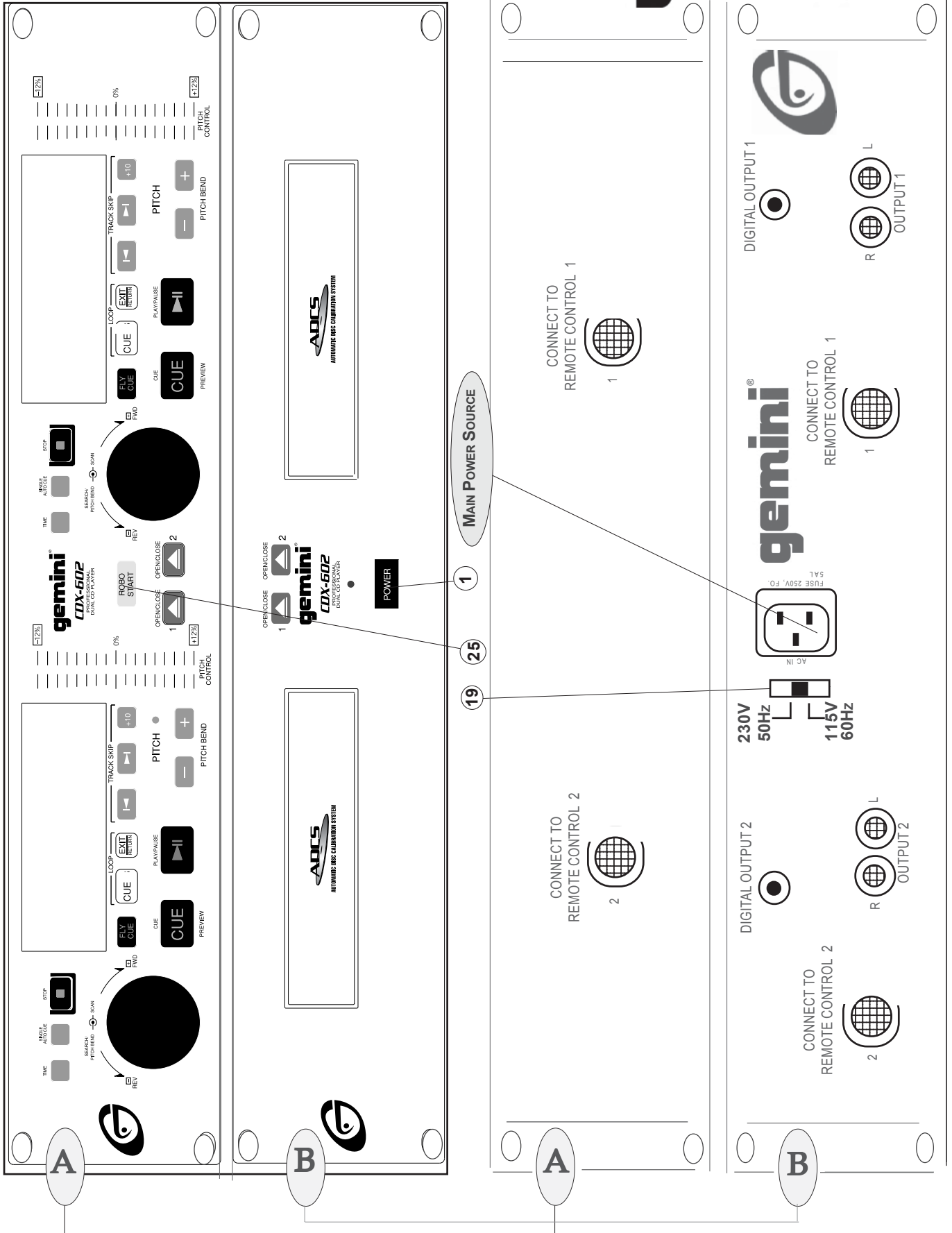
Connections & Operations:.....	Page 2-5
Specifications:.....	Page 5
Parts Lists:.....	Page 6-18
PCBs/Schematics.....	Page 19-32



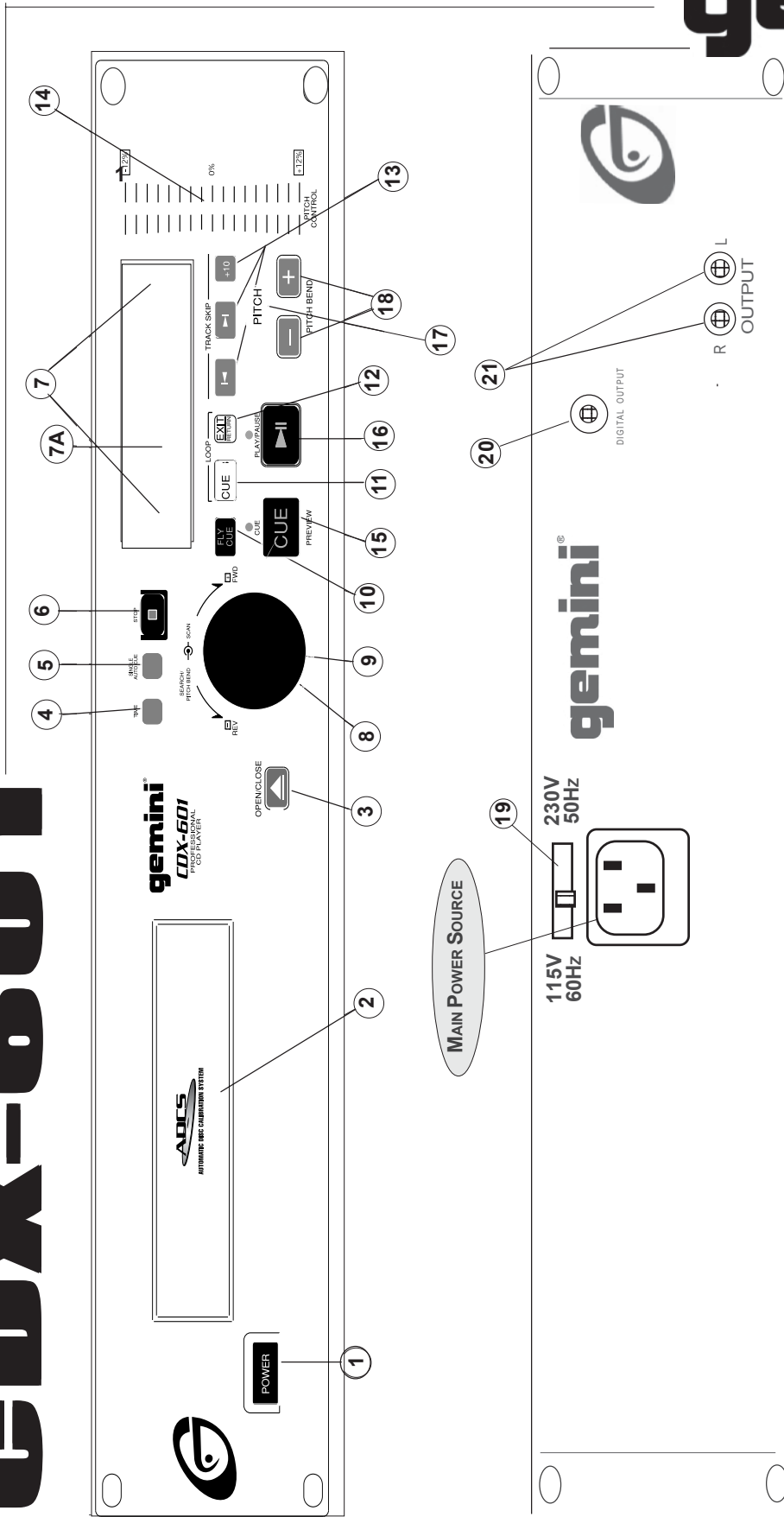
Gemini Sound Products Corp.  
120 Clover Place P.O. Box 6928  
Edison, NJ 08818-6928  
732-738-9003 (Phone) • 732-738-9006 (Fax)

# CDX-602

**gemini**<sup>®</sup>



# CDX-601



**gemini**<sup>®</sup>  
IMPORTANT NOTE

The CDX-602 is a dual C/D player most of the functions and controls of the CDX-601 and CDX-602 are similar or the same. To eliminate confusion, only the CDX-601 illustration is fully labeled. Controls placed in different locations or not duplicated are the CDX-601 (25) and CDX-602 (1) sites.

## INTRODUCTION:

Congratulations on your purchase of a **Gemini CDX-601** or **CDX-602 CD Player**. Your state-of-the-art professional CD Player is backed by a three year warranty that excludes lasers, which are covered by a separate one year warranty. Prior to use of this unit, we suggest you carefully read the following instructions.

Your **Gemini CDX-601 CD Player** or **CDX-602 CD Player** comes equipped with **ADCS (Automatic Disc Calibration System)**, a unique state-of-the-art feature. CDs are produced by a variety of manufacturers and recorded by many different professional companies as well as the do-it-yourselfers at home. Therefore, all CDs do not play the same. The **ADCS (Automatic Disc Calibration System)** automatically adjusts the laser in your **CDX-802 CD Player** for each individual CD you insert into the tray, to give you the best possible performance for every CD you play regardless of how it was manufactured or how it was recorded. With this exclusive system you always get consistent and reliable performance as well as exceptional sound quality every time you play a CD... any CD.

## SAFETY CERTIFICATIONS:

### Laser Diode Properties

Material: Ga - Al - As

Wavelength: 755 - 815 nm (25° C)

Laser Output: Continuous Wave, max. 0.5mW

## LINE VOLTAGE SELECTION:

The Gemini **CDX-600** series CD Players are dual voltage units operating at 115 or 230 volts. Be sure to set the proper voltage:

1. Place the head of a screwdriver in the center of the **VOLTAGE SELECTOR (19)** switch found on the rear panel.
2. Slide the switch to 115 or 230 volts.
3. Do not force or twist the switch. Excessive force may cause damage. If the switch does not move smoothly, contact a qualified technician.

## CONNECTIONS:

1. Plug one end of a set of RCA connectors into the two **LINE OUTPUT (21)** jacks on the back of your CD unit.
2. Plug the other end of the RCA connectors into any of the available line level input jacks on your mixer. If you are playing the **CDX** through a receiver, you can plug the RCA connectors into the CD or AUX input jacks located on the receiver. If there are no CD or AUX inputs, use any line level (not phono) input.

## FUNCTIONS:

**POWER SWITCH:** After making sure the **VOLTAGE SELECTOR** switch is properly set, plug the unit in and press the **POWER (1)** button. The unit will turn on. Pushing **POWER** a second time turns the unit off.

**DISC TRAY:** The **DISC TRAY (2)** is where the CD is held during loading, unloading and playback. Pressing disc tray **OPEN/CLOSE (3)** opens or closes the tray. The **DISC TRAY** holds both 12 cm and 8 cm CDs and automatically closes after remaining open for three minutes. Note: The tray will not open when the **CDX** is in the play mode.

**OPEN/CLOSE BUTTON:** Press **OPEN/CLOSE (3)** to load or remove a CD from the **DISC TRAY**.

**DISPLAY:** The **DISPLAY (7)** shows total tracks; track number; pitch value; single-auto cue; continue (continuous play); and three different time displays: track time elapsed, track time remaining and total time remaining on disc. Time is measured in minutes, seconds and frames.


**PLAYBACK DISPLAY:** The **PLAYBACK DISPLAY (7A)** displays the play time remaining for each track. The display flashes slowly when the track has 15 seconds remaining and pulses rapidly when play time is down to five seconds.

**PLAY/PAUSE **: Each press of **PLAY/PAUSE (16)** causes the operation to change from **PLAY** to **PAUSE** or **PAUSE** to **PLAY**.

**TRACK SKIP **: The **TRACK SKIP (13)** buttons let you select the track to play.

**SEARCH JOG WHEEL:** The **SEARCH JOG WHEEL (9)** has two functions. Use the **SEARCH JOG WHEEL** to make fine adjustments in pause mode. Use the **SEARCH JOG WHEEL** to bend the pitch for precise synchronization in **PLAY** mode.

**SEARCH DIAL:** Use the **SEARCH DIAL (8)** to select the scanning direction and speed of your CD. Turning the dial in a clockwise direction scans forward while a counter-clockwise turn scans the track in reverse. Scan speed increases as the dial is turned.

**STOP **: The **STOP (6)** button ends CD play.

**TIME:** The **TIME (4)** button switches the time display between the three available choices listed under **DISPLAY**.

**FLY CUE:** The **FLY CUE (10)** function lets you set cues "on the fly" with the press of a button. Press **FLY CUE** when the disc reaches the musical location you wish to make your cue or start point. The cue point is now programmed. Press **CUE (15)** to return to the cue point. Press **PLAY/PAUSE** and the unit starts from the pre-programmed spot.


**CUE:** With the unit in the Play mode (**PLAY/PAUSE** LED is green) and after the cue point has been programmed, pressing **CUE (15)** will cause the CD player to enter the **PAUSE** mode (green **PLAY/PAUSE** LED blinks) at the programmed cue point (the **CUE** LED glows yellow). Holding down the cue button changes the function to **PREVIEW** and starts the CD from the programmed cue point. Releasing the **CUE** button will return the CD laser to the preset cue point.

**LOOP:** After a cue point is programmed, pressing **LOOP (11)** while in the **PLAY** mode (**CUE** LED blinks yellow) repeats the section between the cue point and the point where the **LOOP** button was pressed. Press **EXIT/RETURN** or **PAUSE/PLAY** to **EXIT** Loop repeat.

**EXIT/RETURN:** Press loop **EXIT/RETURN (12)** to return to the beginning of the previously saved loop from normal play.

**SINGLE-AUTO CUE/CONTINUOUS:** Pressing **SINGLE-AUTO CUE/CONTINUOUS (5)** activates the **AUTO CUE FUNCTION**. The Auto Cue causes the CD to pause at the recorded beginning of the next track and allows you to segue into the next song with no "dead" air. Pressing **SINGLE-AUTO CUE/CONTINUOUS** a second time will activate the **CONTINUOUS** function. This causes the CD to repeat play continuously until **SINGLE-AUTO CUE/CONTINUOUS** is pressed a third time to deactivate the **CONTINUOUS** function.

**PITCH CONTROL:** Pushing **PITCH CONTROL (17)** activates the **PITCH** section of the unit (**PITCH** LED glows red). The pitch of the CD will change according to the position of the **PITCH SLIDE (14)**.

**PITCH BEND BUTTONS **: Pushing the **PITCH BEND (18)** buttons will automatically raise the pitch up to +4% or lower the pitch down to -4% from the existing setting. Releasing the buttons returns pitch to the original setting. Use this function to match the pitch bend when mixing from one song to another.

**DIGITAL OUTPUT JACK:** Connecting any type of DAT, MD, HARD DRIVE, or other such items which accept digital signals to the **BNC (20)** output connector on the rear panel of your **CDX** allows you to record a digital signal from CD.

## OPERATING INSTRUCTIONS:

1. Make sure that the **VOLTAGE SELECTOR (19)** switch, found on the rear panel, is set for the proper voltage. Plug the unit in and press the **POWER (1)** switch. The unit is **ON**. Pushing **POWER** a second time turns the unit **OFF**.
2. Press **OPEN/CLOSE (3)** and place a CD in the **DISC TRAY (2)**. Press **OPEN/CLOSE** again. The tray will close.
3. Push **TRACK SKIP (13)** to select the track you wish to play.
4. Press **PLAY/PAUSE (16)** and the unit will instantly play.

## FLY CUE & CUE INSTRUCTIONS:

The **FLY CUE** function lets you set cues "on the fly" with the press of a button. Press **FLY CUE** when the disc reaches the musical location you wish to make your cue or start point. The cue point is now programmed. Press **CUE** to return to the cue point. Press **PLAY/PAUSE** and the unit instantly starts from this pre-programmed spot.

## AND/OR:

1. To pre-program a cue point (the spot on a CD at which you want play to start) select the proper track and push **PLAY/PAUSE** so the unit enters the **PLAY** mode (**PLAY/PAUSE** LED glows green). When the CD reaches the approximate musical spot you wish to make your cue, push **PLAY/PAUSE** so the unit enters the **PAUSE** mode (**PLAY/PAUSE** LED blinks). Move the **SEARCH JOG WHEEL** forward or in reverse until the precise spot at which you want CD play to begin is located. Push **PLAY/PAUSE**. The cue point is now programmed. Press **CUE** to return to this pre-programmed cue point at any time. Push **PLAY/PAUSE** and the unit will instantly play from the pre-selected spot.
2. To fine tune your pre-programmed cue point, push **PLAY/PAUSE** so the unit enters the **PLAY** mode. Push the **CUE** button and the CD will return to the cue point you programmed in step #1 and begin play from that point. If you decide this cue or starting point is okay, leave the unit alone until you are ready to play.
3. If, however, the selected spot is not exactly where you want it, push the **CUE** button while the CD is playing and the disc will return to the pre-programmed cue point. Locate the *exact* spot on the CD at which you want play to start by turning the **SEARCH JOG WHEEL**. Push **PLAY/PAUSE** to pre-program this new cue point. Press the **CUE** button to pause play at the new cue point. Push **PLAY/PAUSE** at any time and the unit will play from the pre-selected spot.

## TROUBLESHOOTING:

- If a disk will not play, check to see that it was loaded correctly (label side up) and that the CD unit is on a flat, level, stable surface. Check disc for dirt, scratches, spills, etc.
- If the disc spins but there is no sound, check the cable connections. If they are okay, check your amplifier or receiver.
- If the CD skips, check it for dirt, oil or scratches. Do not assume that the CD player or laser is defective. Many CDs are recorded "out of spec" and skip on most or all CD players. Before sending the unit to an authorized Gemini service technician, insert a disc that plays properly in another unit.

## CDX-602

### ROBO START INSTRUCTIONS:

#### IN SINGLE-AUTO CUE MODE:

Use **ROBO START (25)** in **SINGLE-AUTO CUE MODE (5)** to alternate play between the **CDX-602's** two CD players (one track from one side, then one from the other). In **SINGLE-AUTO CUE MODE** play starts immediately with no blank or "dead" space. **ROBO START** causes one side of the CD player to play when the other side is paused.

1. Engage **SINGLE-AUTO CUE MODE** with the **SINGLE-AUTO CUE/CONTINUOUS** button.
2. Press the **ROBO START (25)** button to activate **ROBO START**. Play will alternate between the two CD players. At the end of a track, the playing side pauses and the other CD deck plays a track. At the end of this track, the playing side pauses and the first CD deck resumes play.

#### IN CONTINUOUS MODE OR DURING NORMAL PLAY:

If you use the **ROBO START** function without **SINGLE-AUTO CUE MODE** (in **CONTINUOUS MODE** or during normal play), CD deck play does not alternate automatically. **PAUSE** must be pressed on the playing deck for the second deck to play.

1. During normal play, set a cue point on the second CD deck.
2. Press the **ROBO START** button to activate **ROBO START**.
3. Press **PLAY/PAUSE** on the playing side to start play from the cue point on the other CD deck.

**NOTE:** Pausing play in the middle of a track causes the other CD deck to play. When the new track ends, play resumes on the first CD player from the point at which it was paused.

## SPECIFICATIONS CDX-601/CDX-602:

#### GENERAL:

Type.....	Compact Disc Player
Disc Type.....	Standard Compact discs (12 cm & 8 cm)
Time Display.....	Track Elapsed, Track Remain, or Total remain
Variable Pitch.....	± 12% Slider with Resume Switch
Pitch Bend.....	± 16% Maximum
Instant Start.....	Within 0.03 seconds
Track Selection.....	1 to 99 Tracks
Installation.....	19" each
Dimensions.....	19" x 3.5" x 10"
Weight Per Unit.....	9.5 lbs.

#### AUDIO SECTION:

Quantization.....	1 Bit Linear/Channel, 3 Beam Laser
Oversampling Rate.....	8 Times
Sampling Frequency.....	44.1 kHz
Frequency Response.....	20 Hz to 20 kHz
Digital Output.....	IEC958
Total Harmonic Distortion.....	Less Than 0.05%
Signal to Noise Ratio.....	104 dB
Dynamic Range.....	98 dB
Channel Separation.....	90 dB (1 KHz)
Output Level.....	1.9 Volts R.M.S.
Power Supply.....	AC 115/230V, 60/50 Hz



CDX-602 (NEW) (MAIN UNIT)					
PARTS LIST				(MODEL NO.)	(ORIGINAL MODEL)
ITEM	PART NUMBER	REV.	Q'ty	ENGLISH NAME	
1	012-014A		1	PANEL CONTROL	
2	031-040		1	TOP COVER	
3	032-096		1	BOTTOM COVER	
4	021-604		1	SUB PANEL	
5	041-479		1	HEAT SINK	
6	041-480		2	HEAT SINK -C	
7	022-860		2	MOUNTING BRACKET	
8	022-052		2	HOLDER TRANSFORMER	
9					
10	003-737		2	DESK DOOR	
11	002-573		1	KNOB PUSH (DA)	
12	003-743		1	PUSE KEY INLAY (DA)	
13	002-576		1	KNOB PUSH KEY ASS'Y (C)	
14	003-739		2	PR OTECTOR INLAY	
15	003-711		1	HOLDER LED 3φ (7mm)	
16	047-494		6	PCB SUPPORT	
17	148-316		1	NAME PLATE (SMALL)	
18	049-215		8	PAD FOOT	
19					
20	153-213		1	POLYFORM	
21	196-107		3	SERIAL NO:LABEL	
22	255-180		1	GIFT BOX	
23	157-979		1	OWNER'S MANUAL	
24	156-089		1	WARRANTY CARD	
25	190-062		1	SILICA GEL	
26	099-167		1	A LABEL	
27	099-168		1	J LABEL	
28	099-169		1	V LABEL	
29	099-014		1	LABEL MADE IN TAIWAN	
30	099-214		1	LABEL MADE IN CHINA	
35	099-270		1	LABEL FDA	
36	159-233		6	DOUBLE LABEL	
37	003-581		2	SPACER (EVA)	
38	160-008		1	PE BAG 85×100mm	
39	160-009		1	PE BAG 230×300mm	
40	160-044		1	PE BAG 160×250mm	
41	160-052		1	PE BAG 650x650mm	
42					
43	121-002A		16	BAND-HEAD TAPPING SCREW	
44	111-046A		14	BAND-HEAD TAPPING SCREW	
45					
46	101-043A		3	FLAT-HEAD MACHINE SCREW	
47	110-172A		6	BAND-HEAD TAPPING SCREW/TWIN SCREW	
48	110-174A		2	BAND-HEAD TAPPING SCREW	
49	111-030		1	PAN-HEAD TAPPING SCREW	
50	111-044A		4	BAND-HEAD TAPPING SCREW	
51	111-057		6	FLAT-HEAD TAPPING SCREW	

CDX-602 (NEW) (MAIN UNIT)					
PARTS LIST				(MODEL NO.)	(ORIGINAL MODEL)
ITEM	PART NUMBER	REV.	Q'ty	ENGLISH NAME	
52					
53	131-081		3	NUT/WASHER 3mm	
54	143-007		2	SPRING WASHER	
55					
56	170-336			MASTER CARTON	
57					
58					
59					
60					
1	262-393		2	PRINTED CIRCUIT BOARD CDX802-1	
2	262-291		1	PRINTED CIRCUIT BOARD CD01-4	
3	262-394		1	PRINTED CIRCUIT BOARD CDX802-2	
4	262-395		2	PRINTED CIRCUIT BOARD CDX802-3	
5					
6	074-181		2	INTEGRATED CIRCUIT BA6218	
7	074-182A		2	INTEGRATED CIRCUIT BA6392FP (AT6392H)	
8	074-184		2	INTEGRATED CIRCUIT PCM1717E	
9	074-074		1	INTEGRATED CIRCUIT NJM7805FA	
10	074-185		1	INTEGRATED CIRCUIT NJM79L05	
11	074-186		2	INTEGRATED CIRCUIT NJM317	
12	074-104S		2	INTEGRATED CIRCUIT NJM4558LD (M5218AL,BA15218N)	
13	074-191		2	INTEGRATED CIRCUIT CXA2550N	
14	074-192		2	INTEGRATED CIRCUIT CXD3068Q	
15	074-183B		2	INTEGRATED CIRCUIT P87C557E8 (P83C557E4)	
16					
17	076-137		2	TRANSISTOR 2SA954(L) OR 2SA817(Y)	
18	076-104		2	TRANSISTOR 2SA1048 OR 2SA1317	
19	076-095		4	TRANSISTOR 2SC2878	
20	076-002		2	SILICON TRANSISTORS 2SC945 (Q)(P)	
21	076-003			SILICON TRANSISTORS OR 2SC1815 (Y)(GR)	
22					
23	079-027		8	RECTIFIER DIODE 1N4002 (1N4003,1N4004)	
24	079-003		10	SILICON DIODE 1N4148	
25	080-118		1	LIGHT EMITTING DIODE (RED) 3φ	
26	001-062A		2	CD PLAYER LOADER	
27	058-021		2	CRYSTAL OSCILLATOR 16.9344MHz	
28	058-022		2	CRYSTAL OSCILLATOR 16MHz	
29					
30	092-059		2	BNC CONNECTOR	
31	161-173		2	2P RCA JACK	
32	092-105		1	AC INLET	
33	100-069		1	FUSE 20mm UL 1A AC250V	
34					
35	147-028		6	CHOKE COIL 3.3μH	
36					
37	059-229		1	POWER TRANSFORMER EI-57×30 115/230V IN 8.3V 0 8.3V 850mA,11.7V 0 11.7V 900mA	
38	059-236		1	CHOKE EE25.4 24mH	
39	059-237		1	FERRIT BEAD 14×28×9H	

CDX-602 (NEW) (MAIN UNIT)					
PARTS LIST				(MODEL NO.)	(ORIGINAL MODEL)
ITEM	PART NUMBER	REV.	Q'ty	ENGLISH NAME	
40					
41	093-370	☆	1	AC CORD 18AWG×3C VW-1	
42	093-371	☆	1	AC CORD 220V VDE	
43	093-372N	☆	1	AC CORD 230V BS	
45					
46					
47	081-023		1	SLIDE SWITCH 2P2C UL	
48	082-042F		2	TACT SWITCH	
49	083-065F		1	POWER SWITCH UL	
50					
51	091-456		2	8P DIN MINI CONNECTOR WITH WIRE 1200mm	
52	092-147		2	8P DIN MINI JACK	
53	091-473		2	(RCA TYPE) CONNECTOR CORD 1M	
54					
55	050-029T		2	ELECTROLYTIC CAPACITOR 5φ 10μ/16V	
56	050-049T		3	ELECTROLYTIC CAPACITOR 6φ 100μ/16V	
57	050-146T		2	ELECTROLYTIC CAPACITOR 6φ 220μ/16V	
58	050-070		1	ELECTROLYTIC CAPACITOR 10φ 470μ/16V	
59	050-205		1	ELECTROLYTIC CAPACITOR 18φ×32 6800μ/25V	
60	050-194		1	ELECTROLYTIC CAPACITOR 16φ 4700μ/16V	
61	050-082		1	ELECTROLYTIC CAPACITOR 13φ 2200μ/16V	
62					
63	050-112T		2	ELECTROLYTIC CAPACITOR MINI 4φ×8 4.7μ/16V	
64	050-115T		18	ELECTROLYTIC CAPACITOR MINI 4φ×8 10μ/16V	
65	050-111T		2	ELECTROLYTIC CAPACITOR MINI 4φ×8 22μ/16V	
66	050-113T		4	ELECTROLYTIC CAPACITOR MINI 4φ×8 1μ/16V	
67					
68	050-166T		4	ELECTROLYTIC CAPACITOR MINI 5φ×7 47μ/16V	
69	050-174T		38	ELECTROLYTIC CAPACITOR MINI 5φ×8 100μ/10V	
70	050-135T		2	ELECTROLYTIC CAPACITOR MINI 6φ×8 100μ/16V	
71					
72	055-062		2	METAL FILM CAPACITORS 0.1μ/275VAC	
73					
74	051-002T		2	CERAMIC CAPACITOR 2P/50V	
75	051-020T		4	CERAMIC CAPACITOR 27P/50V	
76	051-026T		14	CERAMIC CAPACITOR 47P/50V	
77	051-030T		2	CERAMIC CAPACITOR 68P/50V	
78	051-032T		2	CERAMIC CAPACITOR 82P/50V	
79					
80	051-042T		2	CERAMIC CAPACITOR 220P/50V	
81	051-046T		4	CERAMIC CAPACITOR 330P/50V	
82	051-050T		4	CERAMIC CAPACITOR 470P/50V	
83	051-101T		4	CERAMIC CAPACITOR 0.0022μ/50V	
84	051-156		1	CERAMIC CAPACITOR UL 0.0047μ/400V	
85					
86	054-001T		6	POLYESTER CAPACITOR 0.001μ/50V	
87	054-003T		4	POLYESTER CAPACITOR 0.0015μ/50V	
88	054-006T		4	POLYESTER CAPACITOR 0.0027μ/50V	
89	054-011T		2	POLYESTER CAPACITOR 0.0068μ/50V	



CDX-602 (NEW) (MAIN UNIT)					
PARTS LIST				(MODEL NO.)	(ORIGINAL MODEL)
ITEM	PART NUMBER	REV.	Q'ty	ENGLISH NAME	
90	054-013T		8	POLYESTER CAPACITOR 0.01 $\mu$ /50V	
91	054-015T		2	POLYESTER CAPACITOR 0.015 $\mu$ /50V	
92	054-017T		2	POLYESTER CAPACITOR 0.022 $\mu$ /50V	
93	054-022T		2	POLYESTER CAPACITOR 0.047 $\mu$ /50V	
94	054-026T		47	POLYESTER CAPACITOR 0.1 $\mu$ /50V	
95	054-032T		4	POLYESTER CAPACITOR 0.33 $\mu$ /50V	
96					
97	073-504		2	RESISTOR NETWORKS 6P 5R 10K $\Omega$	
98	073-505		2	RESISTOR NETWORKS 6P 5R 4.7K $\Omega$	
99	073-508		2	RESISTOR NETWORKS 6P 5R 47K $\Omega$	
100					
101	066-518		4	1/8 W CARBON FILM RESISTOR S 10 $\Omega$	
102	066-526		2	1/8 W CARBON FILM RESISTOR S 22 $\Omega$	
103	066-538		2	1/8 W CARBON FILM RESISTOR S 68 $\Omega$	
104	066-542		14	1/8 W CARBON FILM RESISTOR S 100 $\Omega$	
105	066-544		2	1/8 W CARBON FILM RESISTOR S 120 $\Omega$	
106	066-546		2	1/8 W CARBON FILM RESISTOR S 150 $\Omega$	
107					
108	066-550		10	1/8 W CARBON FILM RESISTOR S 220 $\Omega$	
109	066-551		1	1/8 W CARBON FILM RESISTOR S 240 $\Omega$	
110	066-558		2	1/8 W CARBON FILM RESISTOR S 470 $\Omega$	
111	066-560		3	1/8 W CARBON FILM RESISTOR S 560 $\Omega$	
112	066-566		18	1/8 W CARBON FILM RESISTOR S 0 $\Omega$	
113	066-554		4	1/8 W CARBON FILM RESISTOR S 330 $\Omega$	
114	066-571		4	1/8 W CARBON FILM RESISTOR S 1K $\Omega$	
115	066-579		10	1/8 W CARBON FILM RESISTOR S 2.2K $\Omega$	
116	066-581		2	1/8 W CARBON FILM RESISTOR S 2.7K $\Omega$	
117	066-583		10	1/8 W CARBON FILM RESISTOR S 3.3K $\Omega$	
118	066-587		20	1/8 W CARBON FILM RESISTOR S 4.7K $\Omega$	
119	066-589		2	1/8 W CARBON FILM RESISTOR S 5.6K $\Omega$	
120	066-593		2	1/8 W CARBON FILM RESISTOR S 8.2K $\Omega$	
121					
122	066-595		18	1/8 W CARBON FILM RESISTOR S 10K $\Omega$	
123	066-599		4	1/8 W CARBON FILM RESISTOR S 15K $\Omega$	
124	066-603		4	1/8 W CARBON FILM RESISTOR S 22K $\Omega$	
125	066-607		4	1/8 W CARBON FILM RESISTOR S 33K $\Omega$	
126	066-611		6	1/8 W CARBON FILM RESISTOR S 47K $\Omega$	
127	066-612		4	1/8 W CARBON FILM RESISTOR S 51K $\Omega$	
128	066-613		8	1/8 W CARBON FILM RESISTOR S 56K $\Omega$	
129					
130	066-619		4	1/8 W CARBON FILM RESISTOR S 100K $\Omega$	
131	066-620		4	1/8 W CARBON FILM RESISTOR S 110K $\Omega$	
132	066-635		2	1/8 W CARBON FILM RESISTOR S 470K $\Omega$	
133	066-637		2	1/8 W CARBON FILM RESISTOR S 560K $\Omega$	
134					
135	066-651		10	1/8 W CARBON FILM RESISTOR S 1M $\Omega$	
136	066-659		2	1/8 W CARBON FILM RESISTOR S 2.2M $\Omega$	
137	066-663		1	1/8 W CARBON FILM RESISTOR S 3.3M $\Omega$	
138					

CDX-602 (NEW) (MAIN UNIT)					
PARTS LIST				(MODEL NO.)	(ORIGINAL MODEL)
ITEM	PART NUMBER	REV.	Q'ty	ENGLISH NAME	
139	060-702		46	JUMP WIRE "□" TYPE 0.5φ P=5mm T/52mm	
140	060-702		25	JUMP WIRE "□" TYPE 0.5φ P=6mm T/52mm	
141	060-702		26	JUMP WIRE "□" TYPE 0.5φ P=7.5mm T/52mm	
142	060-702		2	JUMP WIRE "□" TYPE 0.5φ P=9mm T/52mm	
143	060-702		17	JUMP WIRE "□" TYPE 0.5φ P=10mm T/52mm	
144	060-702		23	JUMP WIRE "□" TYPE 0.5φ P=12.5mm T/52mm	
145	060-702		15	JUMP WIRE "□" TYPE 0.5φ P=15mm T/52mm	
146	060-702		2	JUMP WIRE "□" TYPE 0.5φ P=20mm T/52mm	
147					
148	092-146		2	3P PIN HEADER P=2.54 180°	
149					
150					
151	092-150A		2	16P(P=1mm) CONNECTOR WAFER (FFC NONZIF BOTHSIDE CONTACT)	
152	092-151A		2	5P(P=2mm) CONNECTOR WAFER (PH TYPE) JWT A2001 5P	
153	092-152A		2	6P(P=2mm) CONNECTOR WAFER (PH TYPE) JWT A2001 6P	
154	092-153A		2	2P(P=2mm) CONNECTOR WAFER (PH TYPE) JWT A2001 2P	
155	092-154A		2	3P(P=2mm) CONNECTOR WAFER (PH TYPE) JWT A2001 3P	
156					
157	092-083A		2	3P(P=3.96mm) CONNECTOR WAFER (VH TYPE)	
158	092-026A		2	3P CONNECTOR BASE B3B-XH-A 180°	
159	092-027A		1	6P CONNECTOR BASE B6B-XH-A 180°	
160	092-050A		2	8P CONNECTOR BASE B8B-XH-A 180°	
161					
162	094-204		2	16P FLAT CABLE 110mm P=1mm	
163					
164	091-457A		2	2P CONNECTOR WITH WIRE PH-2P 120mm	
165	091-482A		1	3P CONNECTOR WITH WIRE VH-3P 220mm	
166	091-483A		1	3P CONNECTOR WITH WIRE VH-3P 170mm	
167	091-459A		1	3P CONNECTOR WITH WIRE PH-3P 250mm	
168	091-503A		1	3P CONNECTOR WITH WIRE XH-3P 280mm	
169	091-461A		1	3P CONNECTOR WITH WIRE XH-3P 400mm	
170	091-500A		2	8P CONNECTOR WITH WIRE XH-8P 170mm	
171	091-463A		2	5P CONNECTOR WITH WIRE PH-5P 120mm	
172	091-464A		2	6P CONNECTOR WITH WIRE PH-6P 120mm	
173					
174	201-099		1	LEAD WIRE (BROWN) UL1617 AWG22 6×9 260mm	
175					
176	093-421		1	GROUND WIRE WITH RING TONGUE (BLACK) 210mm	
177	161-027		1	CLOSED END CONNECTOR CE2	
178					
179	190-075		2	HEAT-SHRINK TUBING UL 28φ 35mm	
180	190-230		1	HEAT-SHRINK TUBING UL 35φ 35mm	
181	190-481		2	HEAT-SHRINK TUBING UL 4φ 10mm	
182	190-069		1	HEAT-SHRINK TUBING UL 10φ 40mm	
183					
184	003-605		5	CABLE TIES CV-100	

CDX-602 ( Control unit )				(MODEL NO.)	(ORIGINAL MODEL)
PARTS LIST		REV.	Q'ty	ENGLISH NAME	
ITEM	PART NUMBER				
1	012-015A		1	PANEL CONTROL	
2	031-041		1	COVER	
3	021-605		1	TOP ANGLE	
4	021-606		1	BOTTOM ANGLE	
5	003-427		2	PLATE LAMP	
6	003-428		2	LAMP HOLDER	
7					
8	002-572		1	KNOB PUSH (CA)	
9	003-141		2	KNOB ROTARY (A)	
10	003-144		2	KNOB ROTARY (B)	
11	002-720		2	KNOB SLIDE	
12					
13	003-738		2	VR INLAY (CA)	
14	003-739		2	PR OTECTOR INLAY	
15	003-711		8	HOLDER LED 3φ (7mm)	
16	148-316		1	NAME PLATE (SMALL)	
17	002-574		2	KNOB PUSH KEY ASS'Y (A)	
18	002-575		2	KNOB PUSH KEY ASS'Y (B)	
19	002-576		1	KNOB PUSH KEY ASS'Y (C)	
20	003-741		2	PUSE KEY INLAY (CA)	
21					
22	159-227		2	VR DUST PROOF CLOTH (CA)	
23	099-252		2	LAMP PAPER	
24	003-574		15	SPACER (EVA)	
25					
26	153-212		1	POLYFORM	
27	196-107		1	SERIAL NO:LABEL	
28					
29	099-014		1	LABEL MADE IN TAIWAN	
30	099-214		1	LABEL MADE IN CHINA	
31					
32	190-062		1	SILICA GEL	
33	160-045		1	PE BAG 160×650mm	
34					
35	110-172A		4	BAND-HEAD TAPPING SCREW/TWIN SCREW	
36	111-046A		4	BAND-HEAD TAPPING SCREW	
37	121-002A		20	BAND-HEAD TAPPING SCREW	
38	111-057		6	FLAT-HEAD TAPPING SCREW	
39					
40					
1	262-285		1	PRINTED CIRCUIT BOARD CD01-5	
2	262-287		1	PRINTED CIRCUIT BOARD CD01-6	
3	262-288		2	PRINTED CIRCUIT BOARD CD01-7	
4	262-533		2	PRINTED CIRCUIT BOARD MP3000-8	
5					
6	074-180		2	INTEGRATED CIRCUIT LC75854E	
7	074-171C		2	INTEGRATED CIRCUIT PIC16C505	
8	074-074		2	INTEGRATED CIRCUIT NJM7805FA	
9					
10	079-003		7	SILICON DIODE 1N4148	

CDX-602 ( Control unit )				(MODEL NO.)	(ORIGINAL MODEL)
PARTS LIST		REV.	Q'ty	ENGLISH NAME	
ITEM	PART NUMBER				
11	073-510		2	RESISTOR NETWORKS 5P 4R 470Ω	
12					
13	080-119		6	LIGHT EMITTING DIODE (GREEN) 3φ	
14	080-062		2	LIGHT EMITTING DIODE (YELLOW) 3φ	
15	080-131		6	LIGHT EMITTING DIODE (GREEN) 2×4	
16					
17	001-081		2	LCD PANEL	
18					
19	072-112 I		2	SLIDE VR 60mm	
20	082-042F		31	TACT SWITCH	
21	083-116		2	ROTARY ENCODERS	
22					
23					
24	092-147		2	8P DIN MINI JACK	
25					
26	050-148T		2	ELECTROLYTIC CAPACITOR MINI 5φ×7 33μ/16V	
27	050-174T		4	ELECTROLYTIC CAPACITOR MINI 5φ×8 100μ/10V	
28					
29	053-064T		2	MULTILAYER CERAMIC CAPACITORS 680P/50V	
30					
31	054-026T		6	POLYESTER CAPACITOR 0.1μ/50V	
32					
33	066-518		3	1/8 W CARBON FILM RESISTOR S 10Ω	
34	066-550		8	1/8 W CARBON FILM RESISTOR S 220Ω	
35	066-571		6	1/8 W CARBON FILM RESISTOR S 1KΩ	
36					
37	066-587		8	1/8 W CARBON FILM RESISTOR S 4.7KΩ	
38	066-595		12	1/8 W CARBON FILM RESISTOR S 10KΩ	
39	066-614		2	1/8 W CARBON FILM RESISTOR S 62KΩ	
40					
41	060-702		13	JUMP WIRE "Γ" TYPE 0.5φ P=5mm T/52mm	
42	060-702		25	JUMP WIRE "Γ" TYPE 0.5φ P=6mm T/52mm	
43	060-702		24	JUMP WIRE "Γ" TYPE 0.5φ P=7.5mm T/52mm	
44	060-702		11	JUMP WIRE "Γ" TYPE 0.5φ P=10mm T/52mm	
45	060-702		7	JUMP WIRE "Γ" TYPE 0.5φ P=12.5mm T/52mm	
46	060-702		7	JUMP WIRE "Γ" TYPE 0.5φ P=15mm T/52mm	
47					
48	060-702		2	JUMP WIRE "Γ" TYPE 0.5φ P=17.5mm T/52mm	
49	060-702		2	JUMP WIRE "Γ" TYPE 0.5φ P=20mm T/52mm	
50	060-702		6	JUMP WIRE "Γ" TYPE 0.5φ P=25mm T/52mm	
51	092-148		2	8P PIN HEADER P=2.54 90°	
52					
53	092-044A		2	2P CONNECTOR BASE B2B-XH-A 90°	
54					
55	094-205		1	2P UL2877 AWG26 FLAT CABLE 6×6 50mm	
56					
57	091-458A		2	2P CONNECTOR WITH WIRE XH-2P 70mm	
58					
59					

**CDX-601 (NEW)**

PARTS LIST				(MODEL NO.)	(ORIGINAL MODEL)
ITEM	PART NUMBER	REV.	Q'ty	ENGLISH NAME	
1	012-013A		1	PANEL CONTROL	
2	031-040		1	TOP COVER	
3	032-095		1	BOTTOM COVER	
4	021-603		1	SUB PANEL	
5	041-479		1	HEAT SINK	
6	022-860		2	MOUNTING BRACKET	
6-1	022-052		2	HOLDER TRANSFORMER	
7					
8	003-737		1	DESK DOOR	
9	003-427		1	PLATE LAMP	
10	003-428		1	LAMP HOLDER	
11	003-141		1	KNOB ROTARY (A)	
12	003-144		1	KNOB ROTARY (B)	
13	002-720		1	KNOB SLIDE	
14	148-316		1	NAME PLATE (SMALL)	
15	003-738		1	VR INLAY (CA)	
16					
17	002-574		1	KNOB PUSH KEY ASS'Y (A)	
18	002-575		1	KNOB PUSH KEY ASS'Y (B)	
19	002-577		1	KNOB PUSH KEY	
20	003-743		1	PUSE KEY INLAY (DA)	
21	003-741		1	PUSE KEY INLAY (CA)	
22	002-573		1	KNOB PUSH (DA)	
23					
24	159-227		1	VR DUST PROOF CLOTH (CA)	
25	099-252		1	LAMP PAPER	
26	003-711		3	HOLDER LED 3φ (7mm)	
27	047-494		5	PCB SUPPORT	
28	049-215		4	PAD FOOT	
29	003-581		1	SPACER (EVA)	
30	153-213		1	POLYFORM	
31	196-106		3	SERIAL NO:LABEL	
32	255-179		1	GIFT BOX	
33	157-979		1	OWNER'S MANUAL	
34	156-089		1	WARRANTY CARD	
35					
36	190-062		1	SILICA GEL	
37	099-167		1	A LABEL	
38	099-168		1	J LABEL	
39	099-169		1	V LABEL	
40	099-288		1	K LABEL	
41	099-014		1	LABEL MADE IN TAIWAN	
42	099-214		1	LABEL MADE IN CHINA	
43					
47	099-270		1	LABEL FDA	
48	003-574		7	SPACER (EVA)	
49	099-293		5	! LABEL	
50	099-236		1	GROUND LABEL	

**CDX-601 (NEW)**

PARTS LIST				(MODEL NO.)	(ORIGINAL MODEL)
ITEM	PART NUMBER	REV.	Q'ty	ENGLISH NAME	
51	160-008		1	PE BAG 85×100mm	
52	160-009		1	PE BAG 230×300mm	
53	160-044		1	PE BAG 160×250mm	
54	160-052		1	PE BAG 650×650mm	
55					
56	101-043A		3	FLAT-HEAD MACHINE SCREW	
57	110-172A		3	BAND-HEAD TAPPING SCREW/TWIN SCREW	
58	110-174A		2	BAND-HEAD TAPPING SCREW	
59	111-030		1	PAN-HEAD TAPPING SCREW	
60	111-044A		4	BAND-HEAD TAPPING SCREW	
61	111-046A		8	BAND-HEAD TAPPING SCREW	
62	111-057		6	FLAT-HEAD TAPPING SCREW	
63	121-002A		21	BAND-HEAD TAPPING SCREW	
64	131-081		3	NUT/WASHER 3mm	
65	143-007		2	SPRING WASHER	
66					
67	170-335			MASTER CARTON	
68					
69					
70					
1	262-393		1	PRINTED CIRCUIT BOARD CDX802-1	
2	262-533		1	PRINTED CIRCUIT BOARD MP3000-8	
3	262-287		1	PRINTED CIRCUIT BOARD CD01-6	
4	262-394		1	PRINTED CIRCUIT BOARD CDX802-2	
5	262-395		1	PRINTED CIRCUIT BOARD CDX802-3	
6					
7	074-181		1	INTEGRATED CIRCUIT BA6218	
8	074-182A		1	INTEGRATED CIRCUIT BA6392FP (AT6392H)	
9	074-184		1	INTEGRATED CIRCUIT PCM1717E	
10	074-074		1	INTEGRATED CIRCUIT NJM7805FA	
11	074-185		1	INTEGRATED CIRCUIT NJM79L05	
12	074-186		2	INTEGRATED CIRCUIT NJM317	
13	074-104S		1	INTEGRATED CIRCUIT NJM4558LD (M5218AL,BA15218N)	
14	074-191		1	INTEGRATED CIRCUIT CXA2550N	
15	074-192		1	INTEGRATED CIRCUIT CXD3068Q	
16	074-183B		1	INTEGRATED CIRCUIT P87C557E8 (P83C557E4)	
17	074-180		1	INTEGRATED CIRCUIT LC75854E	
18	074-171C		1	INTEGRATED CIRCUIT PIC16C505	
19					
20	076-137		1	TRANSISTOR 2SA954(L) OR 2SA817(Y)	
21	076-104		1	TRANSISTOR 2SA1048 OR 2SA1317	
22	076-095		2	TRANSISTOR 2SC2878	
23	076-002		1	TRANSISTOR 2SC945 OR 2SC1815	
24	076-003			SILICON TRANSISTORS OR 2SC1815 (Y)(GR)	
25					
26	079-027		7	RECTIFIER DIODE 1N4002 (1N4003,1N4004)	
27	079-003		9	SILICON DIODE 1N4148	
28					

**CDX-601 (NEW)**

PARTS LIST				(MODEL NO.)	(ORIGINAL MODEL)
ITEM	PART NUMBER	REV.	Q'ty	ENGLISH NAME	
29	080-119		2	LIGHT EMITTING DIODE (GREEN) 3φ	
30	080-062		1	LIGHT EMITTING DIODE (YELLOW) 3φ	
31	080-131		3	LIGHT EMITTING DIODE (GREEN) 2×4	
32					
33					
34					
35	001-082		1	LCD PANEL	
36	001-062A		1	CD PLAYER LOADER	
37	058-021		1	CRYSTAL OSCILLATOR 16.9344MHz	
38	058-022		1	CRYSTAL OSCILLATOR 16MHz	
39					
40	092-059		1	BNC CONNECTOR	
41	161-173		1	2P RCA JACK	
42					
43	092-105		1	AC INLET	
44	100-069		1	FUSE 20mm UL 1A AC250V	
45					
46	147-028		6	CHOKE COIL 3.3μH	
47					
48	059-236		1	CHOKE EE25.4 24mH	
49	059-237		1	FERRIT BEAD 14×28×9H	
50	059-229		1	POWER TRANSFORMER EI-57 7.3V 7.3V 600mA, 11.2V 0 11.2V 900mA	
				115/230V IN	
51	093-370	☆	1	AC CORD 18AWG×3C VW-1 110V	
52	093-371	☆	1	AC CORD 220V VDE	
53	093-372N	☆	1	AC CORD 230VBS	
55					
56	072-112 I		1	SLIDE VR 60mm	
57					
58	081-023		1	SLIDE SWITCH 2P2C UL	
59	082-042F		15	TACT SWITCH	
60	083-065F		1	POWER SWITCH UL	
61	083-116		1	ROTARY ENCODERS	
62					
63	091-473		1	(RCA TYPE) CONNECTOR CORD 1M	
64					
65	050-029T		2	ELECTROLYTIC CAPACITOR 5φ 10μ/16V	
66	050-049T		3	ELECTROLYTIC CAPACITOR 6φ 100μ/16V	
67	050-146T		1	ELECTROLYTIC CAPACITOR 6φ 220μ/16V	
68	050-070		1	ELECTROLYTIC CAPACITOR 10φ 470μ/16V	
69					
70	050-205		1	ELECTROLYTIC CAPACITOR 18φ×32 6800μ/25V	
71	050-194		1	ELECTROLYTIC CAPACITOR 16φ 4700μ/16V	
72	050-082		1	ELECTROLYTIC CAPACITOR 13φ 2200μ/16V	
73					
74	050-112T		1	ELECTROLYTIC CAPACITOR MINI 4φ×8 4.7μ/16V	
75	050-115T		9	ELECTROLYTIC CAPACITOR MINI 4φ×8 10μ/16V	

**CDX-601 (NEW)**

PARTS LIST				(MODEL NO.)	(ORIGINAL MODEL)
ITEM	PART NUMBER	REV.	Q'ty	ENGLISH NAME	
76	050-111T		1	ELECTROLYTIC CAPACITOR MINI 4φ×8 22μ/16V	
77	050-113T		2	ELECTROLYTIC CAPACITOR MINI 4φ×8 1μ/16V	
78	050-148T		1	ELECTROLYTIC CAPACITOR MINI 5φ×7 33μ/16V	
79	050-166T		2	ELECTROLYTIC CAPACITOR MINI 5φ×7 47μ/16V	
80	050-174T		19	ELECTROLYTIC CAPACITOR MINI 5φ×8 100μ/10V	
81	050-135T		1	ELECTROLYTIC CAPACITOR MINI 6φ×8 100μ/16V	
82					
83	051-002T		1	CERAMIC CAPACITOR 2P/50V	
84	051-020T		2	CERAMIC CAPACITOR 27P/50V	
85	051-026T		7	CERAMIC CAPACITOR 47P/50V	
86	051-030T		1	CERAMIC CAPACITOR 68P/50V	
87	051-032T		1	CERAMIC CAPACITOR 82P/50V	
88					
89	051-042T		1	CERAMIC CAPACITOR 220P/50V	
90	051-046T		2	CERAMIC CAPACITOR 330P/50V	
91	051-050T		2	CERAMIC CAPACITOR 470P/50V	
92	051-101T		2	CERAMIC CAPACITOR 0.0022μ/50V	
93	051-156		1	CERAMIC CAPACITOR UL 0.0047μ/400V	
94					
95	053-064T		1	MULTILAYER CERAMIC CAPACITORS 680P/50V	
96	055-062		2	METAL FILM CAPACITORS 0.1μ/275VAC	
97					
98	054-001T		3	POLYESTER CAPACITOR 0.001μ/50V	
99	054-003T		2	POLYESTER CAPACITOR 0.0015μ/50V	
100	054-006T		2	POLYESTER CAPACITOR 0.0027μ/50V	
101	054-011T		1	POLYESTER CAPACITOR 0.0068μ/50V	
102	054-013T		4	POLYESTER CAPACITOR 0.01μ/50V	
103	054-015T		1	POLYESTER CAPACITOR 0.015μ/50V	
104	054-017T		2	POLYESTER CAPACITOR 0.022μ/50V	
105	054-022T		1	POLYESTER CAPACITOR 0.047μ/50V	
106	054-026T		28	POLYESTER CAPACITOR 0.1μ/50V	
107	054-032T		3	POLYESTER CAPACITOR 0.33μ/50V	
108					
109	073-504		1	RESISTOR NETWORKS 6P 5R 10KΩ	
110	073-505		1	RESISTOR NETWORKS 6P 5R 4.7KΩ	
111	073-508		1	RESISTOR NETWORKS 6P 5R 47KΩ	
112	073-510		1	RESISTOR NETWORKS 5P 4R 470Ω	
113					
114	066-518		3	1/8 W CARBON FILM RESISTOR S 10Ω	
115	066-526		1	1/8 W CARBON FILM RESISTOR S 22Ω	
116	066-538		1	1/8 W CARBON FILM RESISTOR S 68Ω	
117	066-542		7	1/8 W CARBON FILM RESISTOR S 100Ω	
118	066-544		2	1/8 W CARBON FILM RESISTOR S 120Ω	
119					
120	066-550		9	1/8 W CARBON FILM RESISTOR S 220Ω	
121	066-551		1	1/8 W CARBON FILM RESISTOR S 240Ω	
122	066-554		2	1/8 W CARBON FILM RESISTOR S 330Ω	
123	066-558		1	1/8 W CARBON FILM RESISTOR S 470Ω	

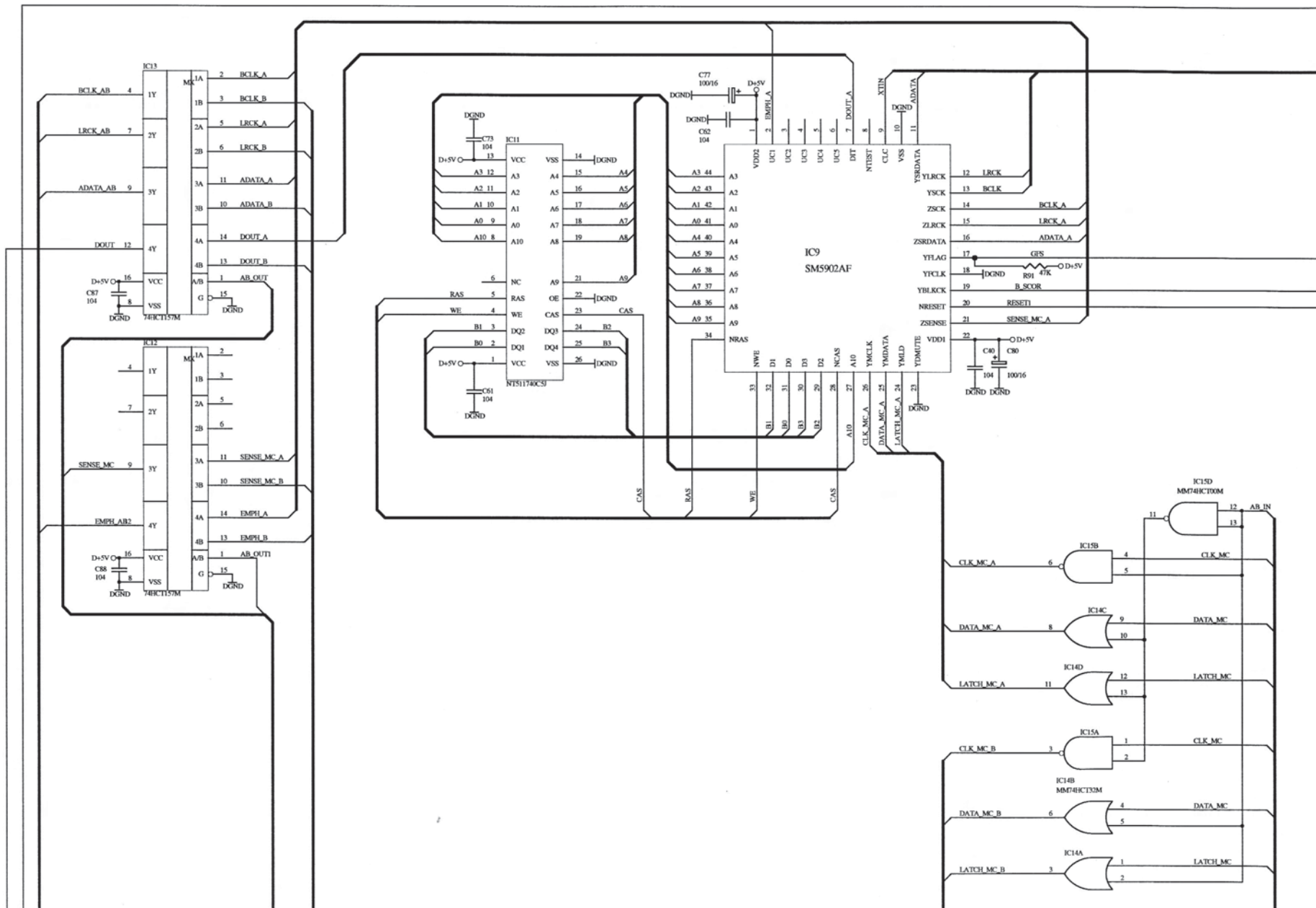


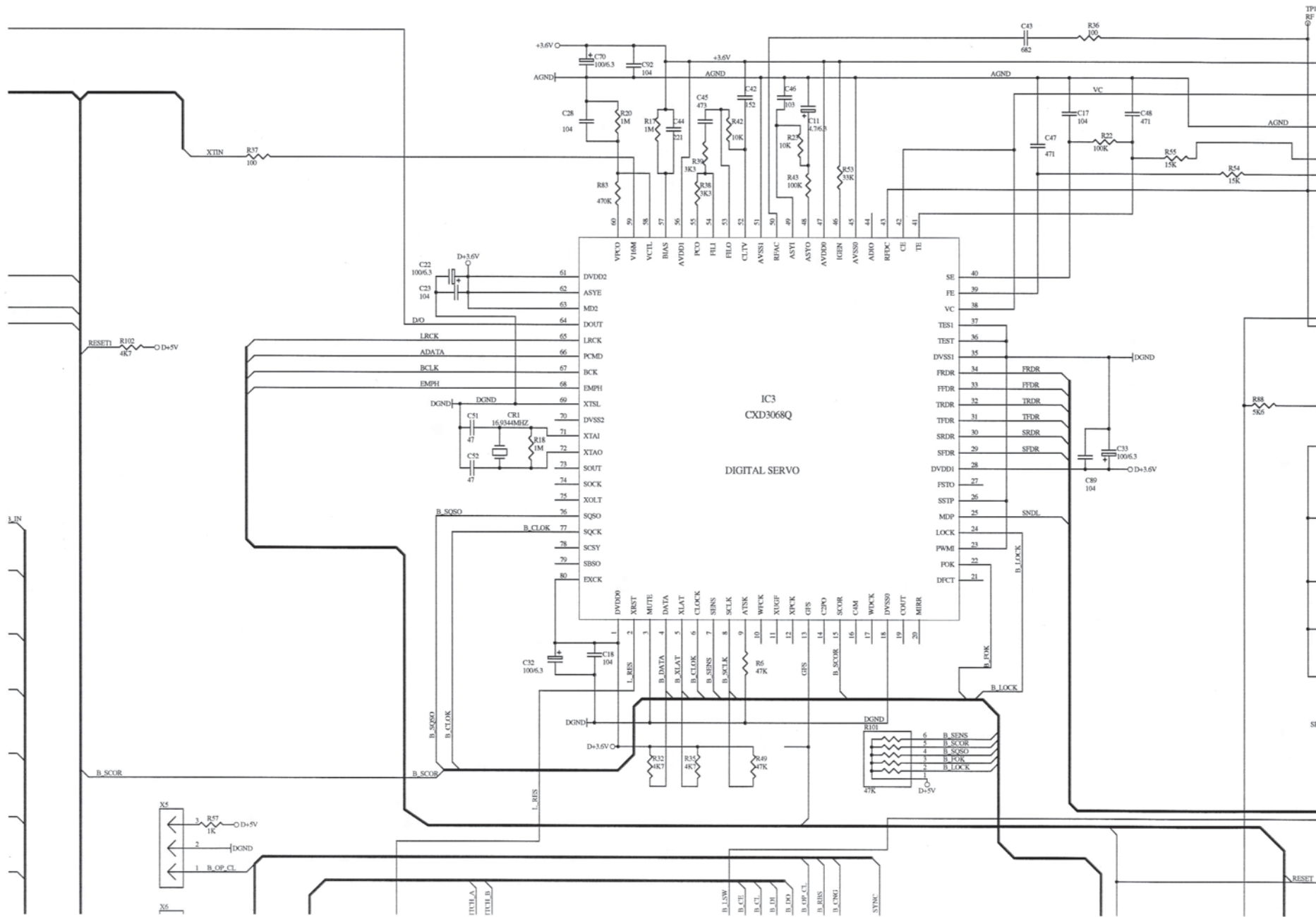
## CDX-601 (NEW)

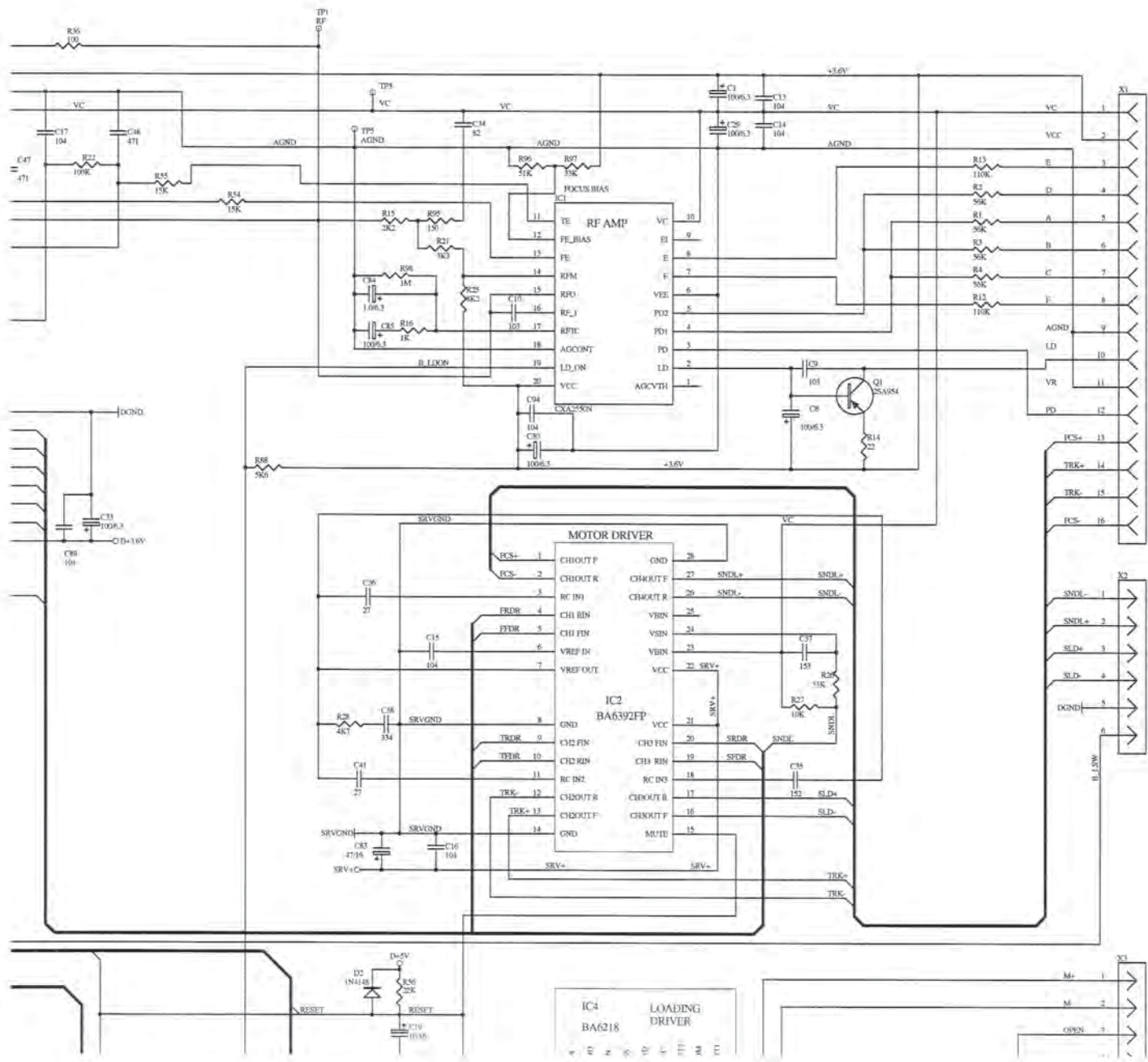
PARTS LIST				(MODEL NO.)	(ORIGINAL MODEL)
ITEM	PART NUMBER	REV.	Q'ty	ENGLISH NAME	
124	066-560		2	1/8 W CARBON FILM RESISTOR S 560Ω	
125	066-566		9	1/8 W CARBON FILM RESISTOR S 0Ω	
126	066-571		5	1/8 W CARBON FILM RESISTOR S 1KΩ	
127	066-579		5	1/8 W CARBON FILM RESISTOR S 2.2KΩ	
128	066-581		1	1/8 W CARBON FILM RESISTOR S 2.7KΩ	
129	066-583		5	1/8 W CARBON FILM RESISTOR S 3.3KΩ	
130	066-587		14	1/8 W CARBON FILM RESISTOR S 4.7KΩ	
131	066-589		1	1/8 W CARBON FILM RESISTOR S 5.6KΩ	
132	066-593		1	1/8 W CARBON FILM RESISTOR S 8.2KΩ	
133					
134	066-595		15	1/8 W CARBON FILM RESISTOR S 10KΩ	
135	066-599		2	1/8 W CARBON FILM RESISTOR S 15KΩ	
136	066-603		2	1/8 W CARBON FILM RESISTOR S 22KΩ	
137	066-607		2	1/8 W CARBON FILM RESISTOR S 33KΩ	
138	066-611		3	1/8 W CARBON FILM RESISTOR S 47KΩ	
139	066-612		2	1/8 W CARBON FILM RESISTOR S 51KΩ	
140	066-613		4	1/8 W CARBON FILM RESISTOR S 56KΩ	
141	066-614		1	1/8 W CARBON FILM RESISTOR S 62KΩ	
142					
143	066-619		2	1/8 W CARBON FILM RESISTOR S 100KΩ	
144	066-620		2	1/8 W CARBON FILM RESISTOR S 110KΩ	
145	066-635		1	1/8 W CARBON FILM RESISTOR S 470KΩ	
146	066-637		1	1/8 W CARBON FILM RESISTOR S 560KΩ	
147					
148	066-651		5	1/8 W CARBON FILM RESISTOR S 1MΩ	
149	066-659		1	1/8 W CARBON FILM RESISTOR S 2.2MΩ	
150	066-663		1	1/8 W CARBON FILM RESISTOR S 3.3MΩ	
151	060-702		29	JUMP WIRE "□" TYPE 0.5φ P=5mm T/52mm	
152	060-702		25	JUMP WIRE "□" TYPE 0.5φ P=6mm T/52mm	
153	060-702		27	JUMP WIRE "□" TYPE 0.5φ P=7.5mm T/52mm	
154	060-702		13	JUMP WIRE "□" TYPE 0.5φ P=10mm T/52mm	
155	060-702		15	JUMP WIRE "□" TYPE 0.5φ P=12.5mm T/52mm	
156	060-702		11	JUMP WIRE "□" TYPE 0.5φ P=15mm T/52mm	
157	060-702		1	JUMP WIRE "□" TYPE 0.5φ P=17.5mm T/52mm	
158	060-702		2	JUMP WIRE "□" TYPE 0.5φ P=20mm T/52mm	
159	060-702		1	JUMP WIRE "□" TYPE 0.5φ P=9mm T/52mm	
160	060-702		3	JUMP WIRE "□" TYPE 0.5φ P=25mm T/52mm	
161					
162	094-204		1	16P FLAT CABLE 110mm P=1mm	
163	092-146		1	3P PIN HEADER P=2.54 180°	
164					
165	092-150A		1	16P(P=1mm) CONNECTOR WAFER (FFC NONZIF BOTHSIDE CONTACT)	
166	092-151A		1	5P(P=2mm) CONNECTOR WAFER (PH TYPE) JWT A2001 5P	
167	092-152A		1	6P(P=2mm) CONNECTOR WAFER (PH TYPE) JWT A2001 6P	
168	092-153A		1	2P(P=2mm) CONNECTOR WAFER (PH TYPE) JWT A2001 2P	
169	092-050A		1	8P CONNECTOR BASE B8B-XH-A 180°	
170	092-155A		1	8P(P=2mm) CONNECTOR WAFER (PH TYPE) JWT A2001 8P	
171	092-156A		1	8P(P=2mm) CONNECTOR WAFER (PH TYPE) JWT A2001 8P	

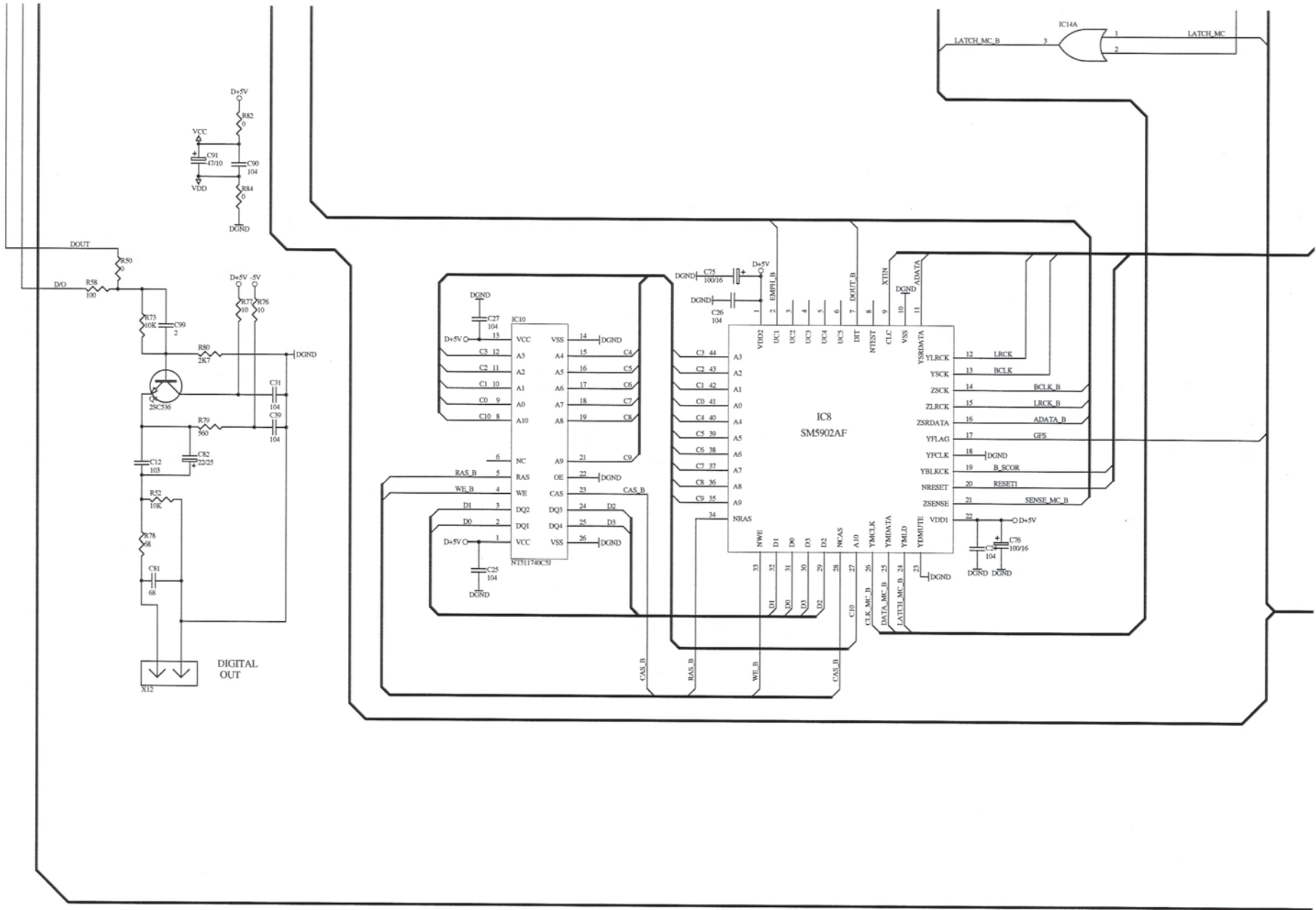
**CDX-601 (NEW)**

PARTS LIST				(MODEL NO.)	(ORIGINAL MODEL)
ITEM	PART NUMBER	REV.	Q'ty	ENGLISH NAME	
172					
173	092-083A		2	3P(P=3.96mm) CONNECTOR WAFER (VH TYPE)	
174	092-044A		1	2P CONNECTOR BASE B2B-XH-A 90°	
175	092-027A		1	6P CONNECTOR BASE B6B-XH-A 180°	
176					
177	091-457A		1	2P CONNECTOR WITH WIRE PH-2P 120mm	
178	091-482A		1	3P CONNECTOR WITH WIRE VH-3P 220mm	
179	091-484A		1	3P CONNECTOR WITH WIRE VH-3P 170mm+370mm	
180	091-471A		1	2P CONNECTOR WITH WIRE XH-2P SCN-2P 320mm	
181	091-472A		1	8P CONNECTOR WITH WIRE PH-8P 450mm	
182	091-500A		1	8P CONNECTOR WITH WIRE XH-8P 170mm	
183	091-463A		1	5P CONNECTOR WITH WIRE PH-5P 120mm	
184	091-464A		1	6P CONNECTOR WITH WIRE PH-6P 120mm	
185					
186	201-100		1	LEAD WIRE (BROWN) UL1617 AWG22 6×9 460mm	
187					
188	093-421		1	GROUND WIRE WITH RING TONGUE (BLACK) 210mm	
189	093-432		1	GROUND WIRE WITH RING TONGUE (GRN/YLW) 160/210mm	
190					
191					
192	161-027		1	CLOSED END CONNECTOR CE2	
193					
194	190-075		2	HEAT-SHRINK TUBING UL 28φ 35mm	
195	190-230		1	HEAT-SHRINK TUBING UL 35φ 35mm	
196	190-481		1	HEAT-SHRINK TUBING UL 4φ 10mm	
197	190-069		1	HEAT-SHRINK TUBING UL 10φ 40mm	
198					
199	003-605		7	CABLE TIES CV-100	
200					



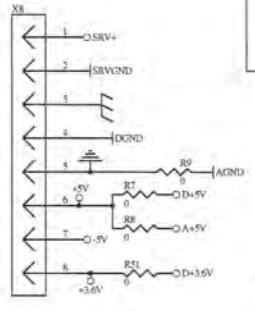
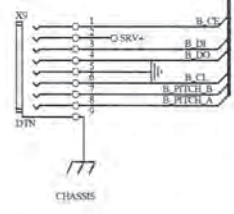
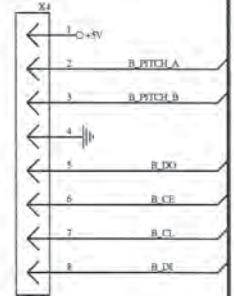
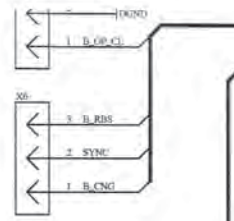
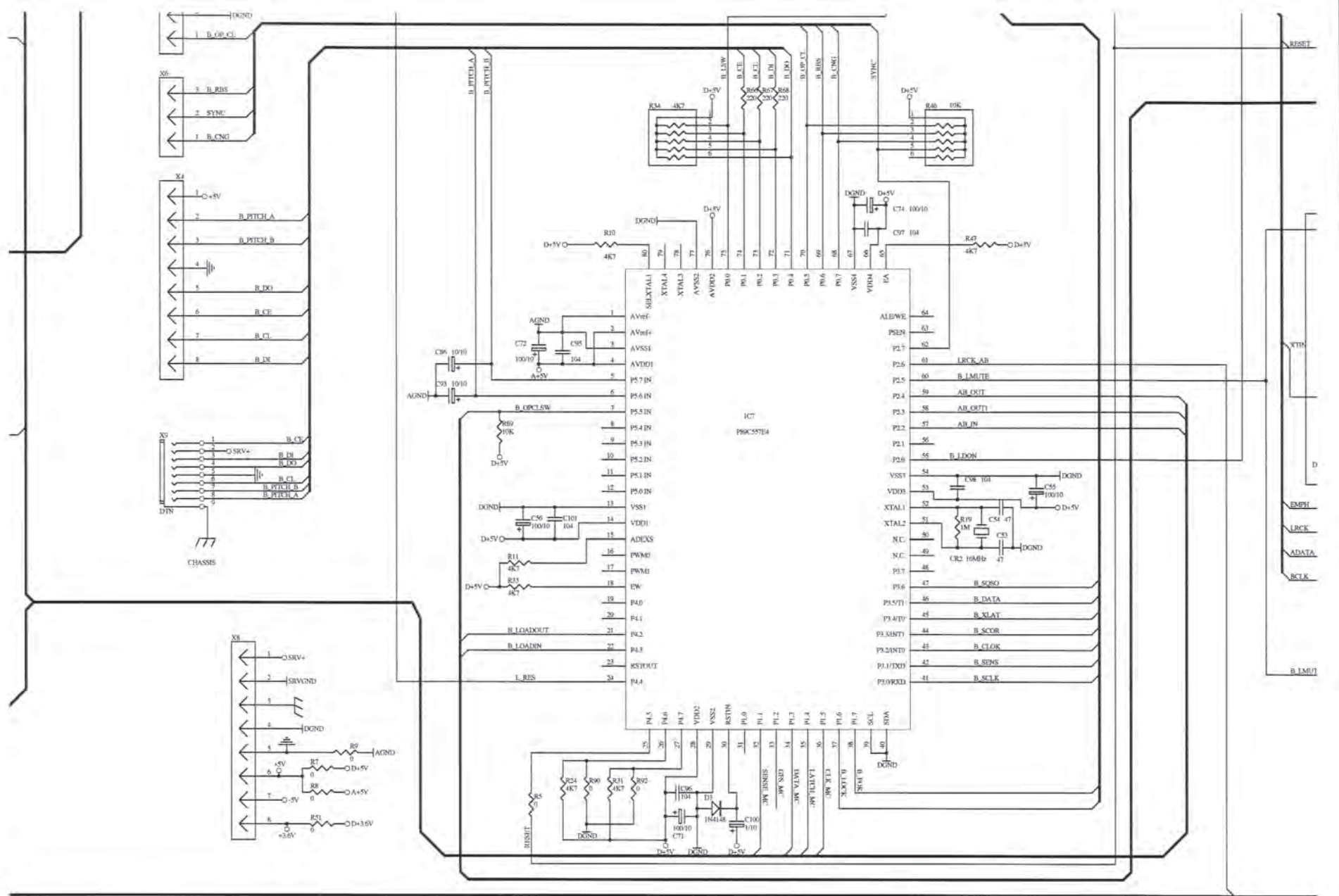


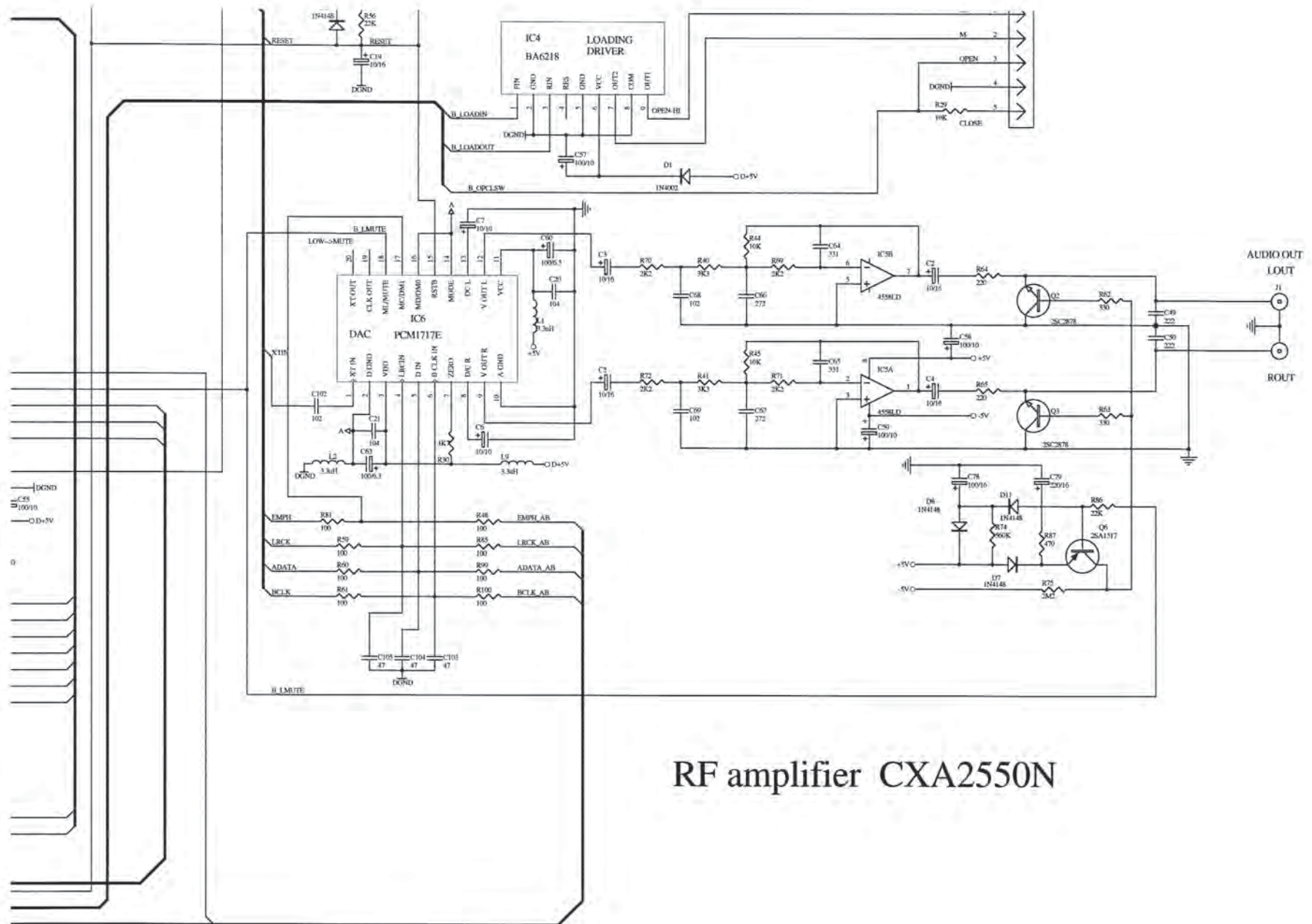




DIGITAL OUT

X12

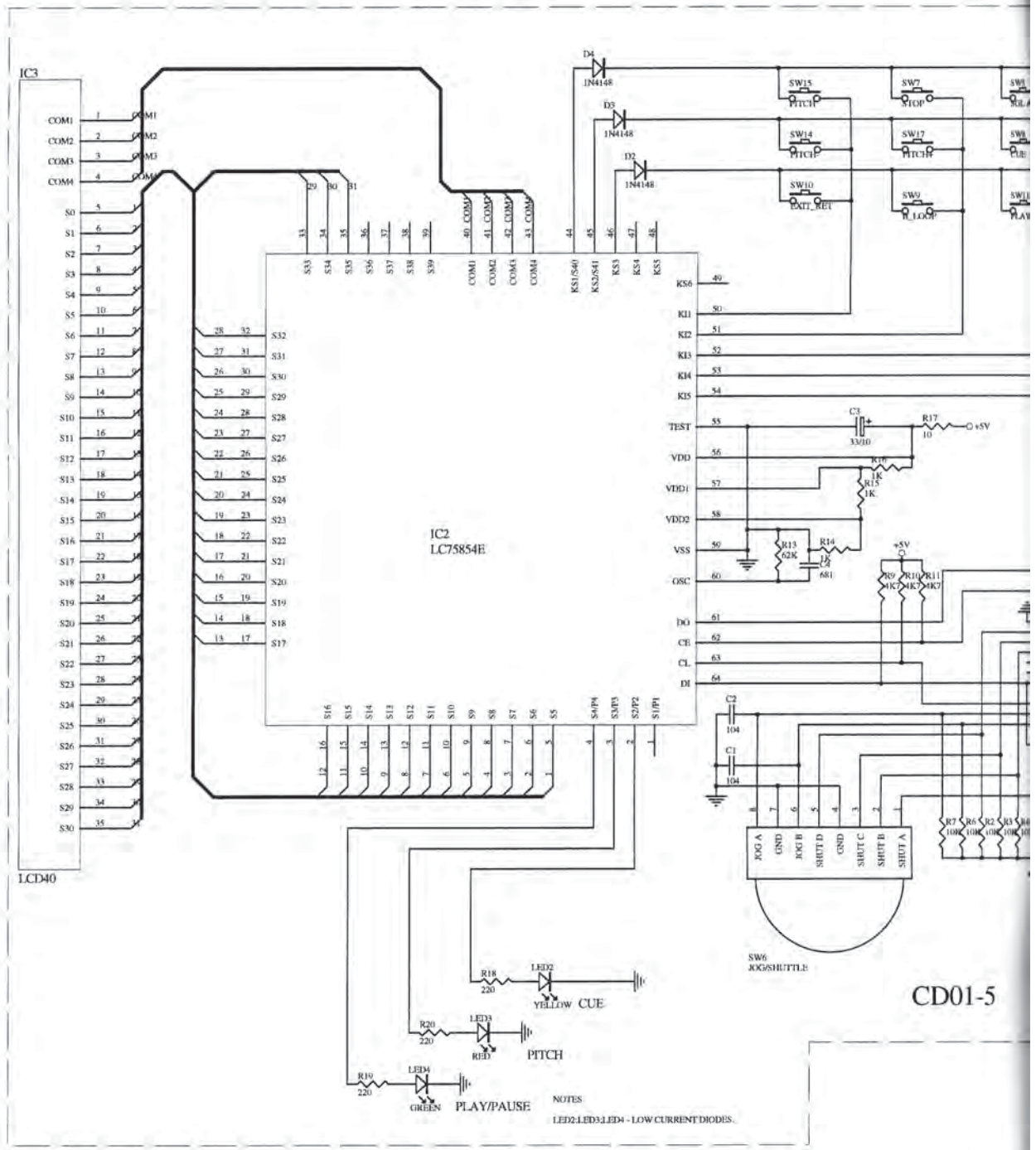


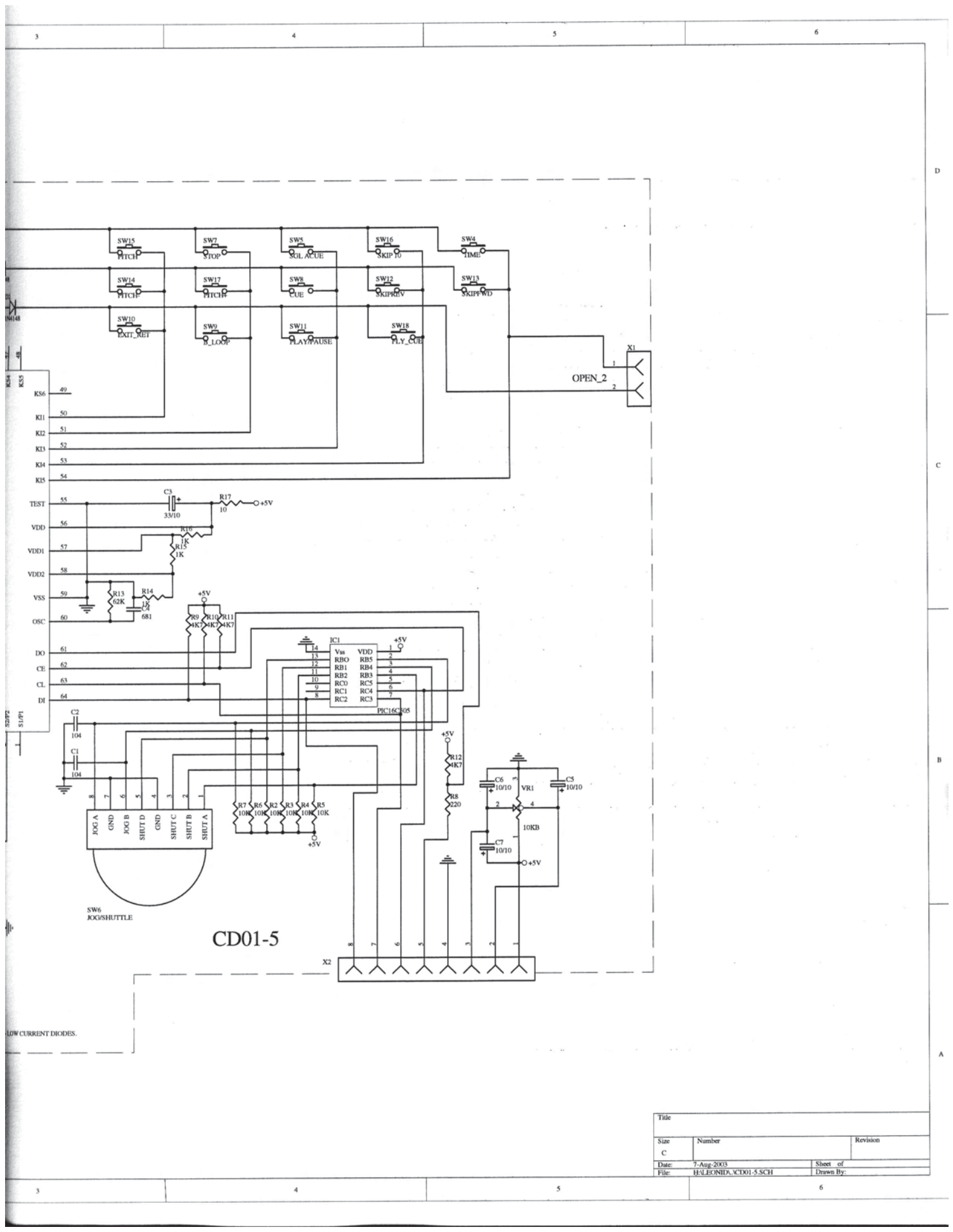


RF amplifier CXA2550N

Title		
Size	Number	Revision
E		
Date:	1-Jun-2003	Sheet 1 of 1



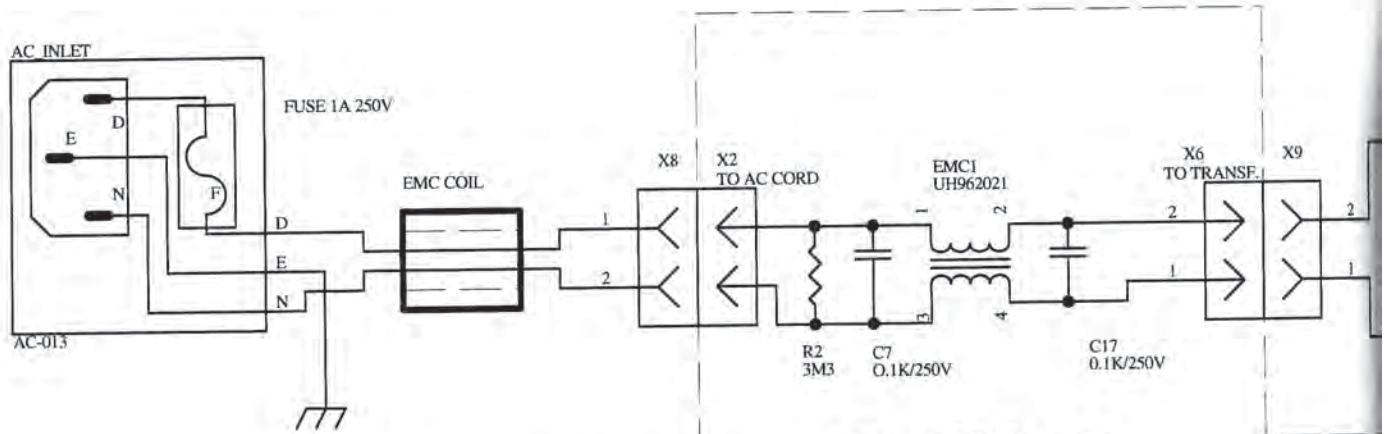
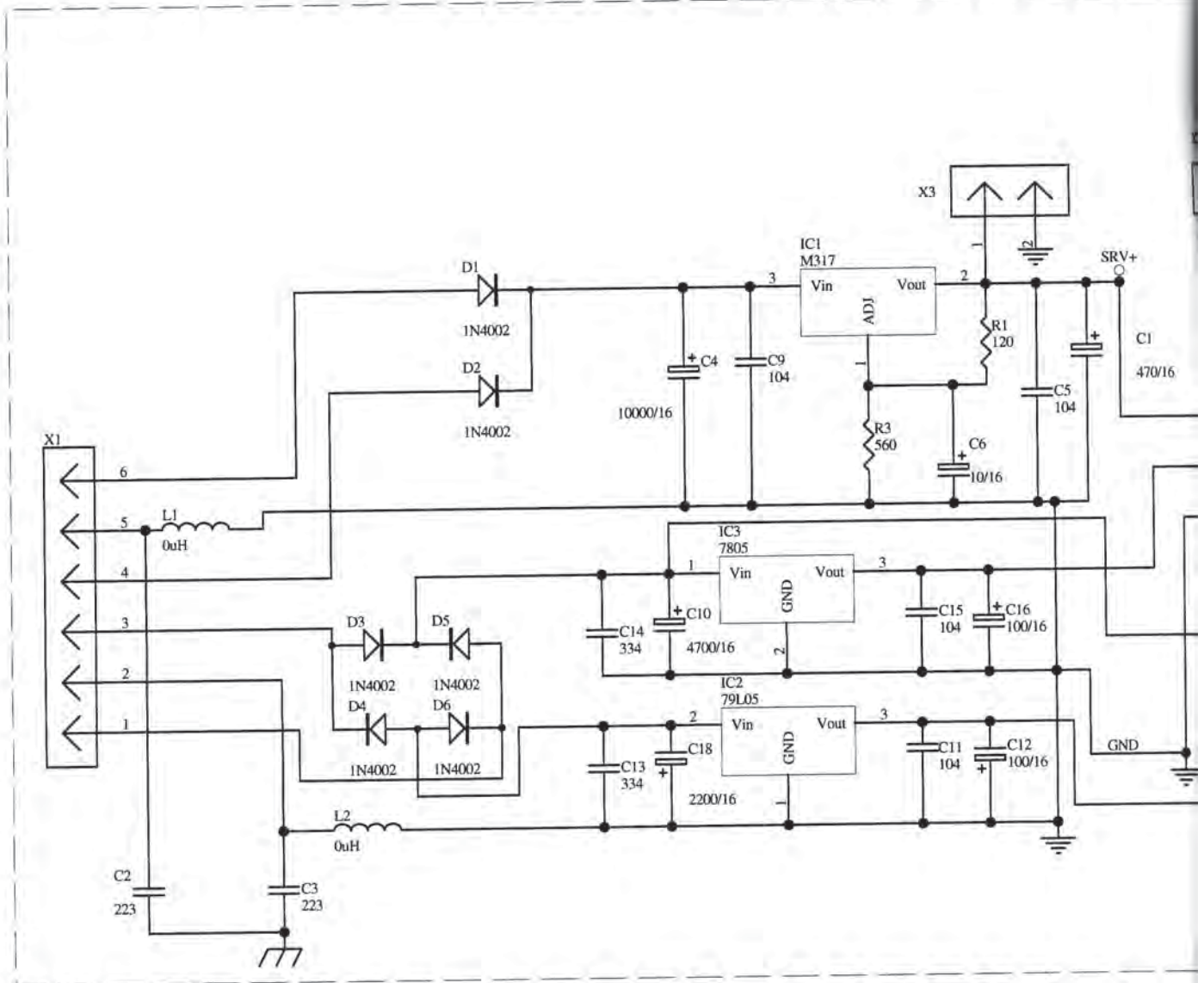




CD01-5

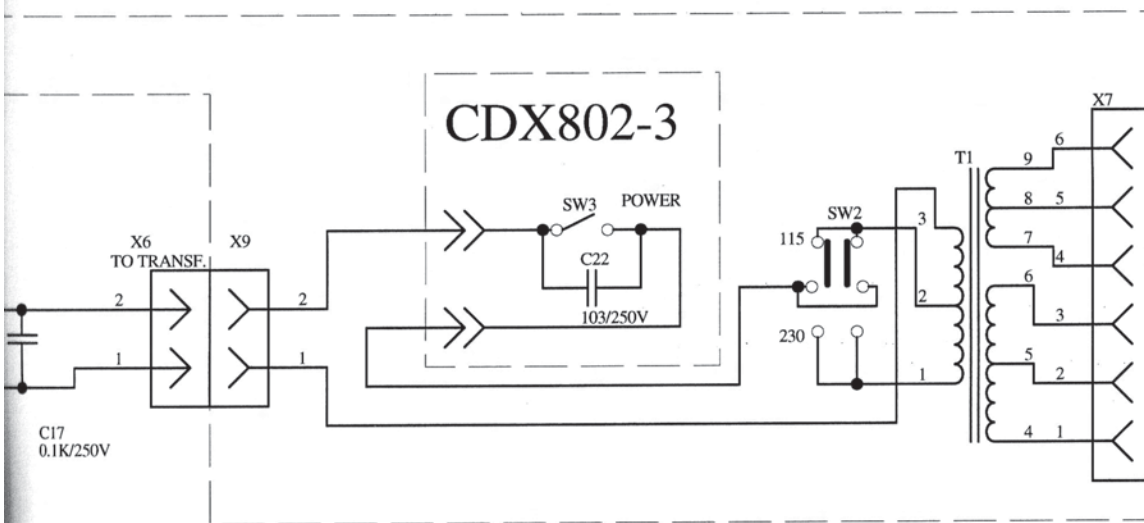
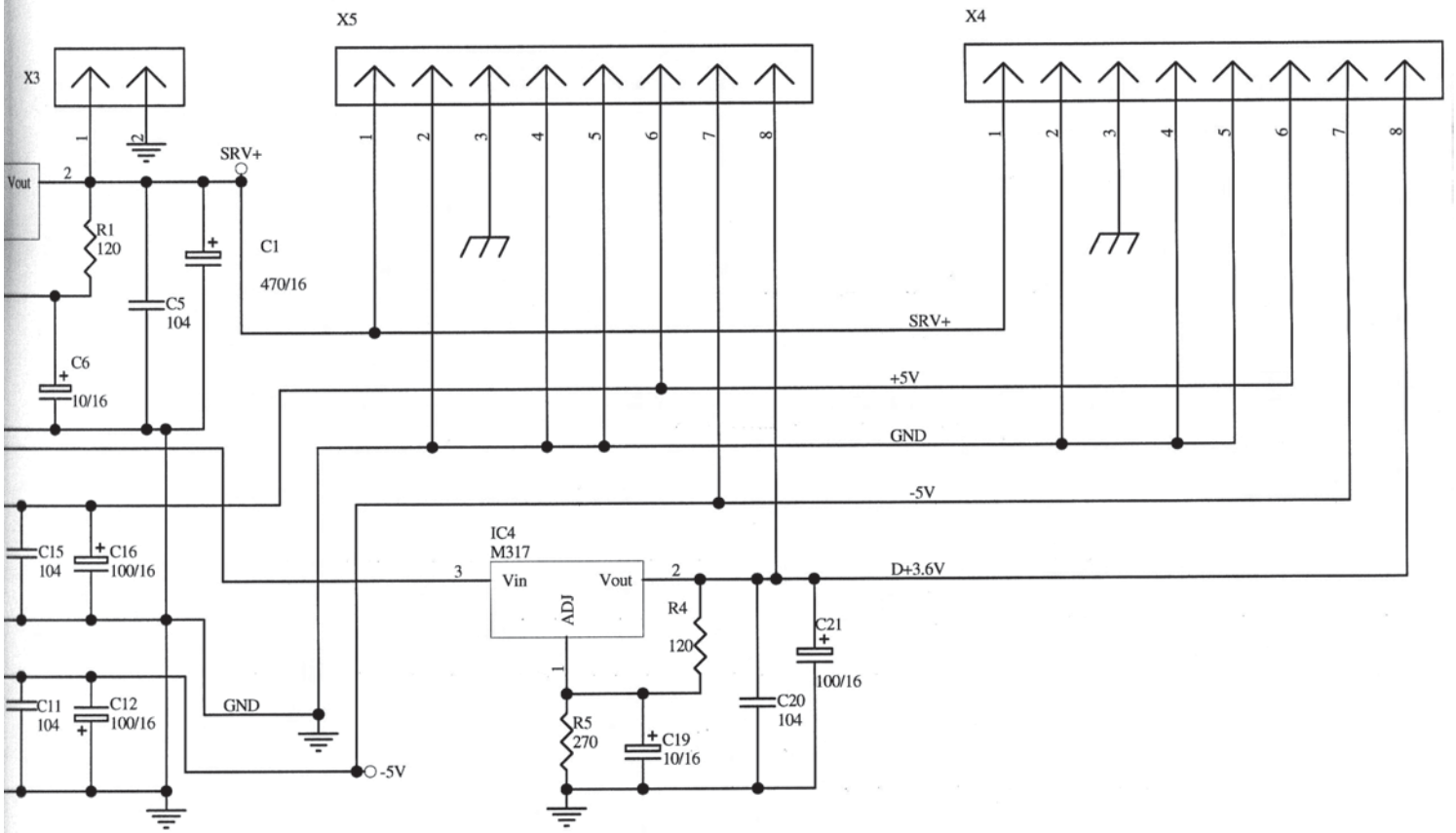
LOW CURRENT DIODES.

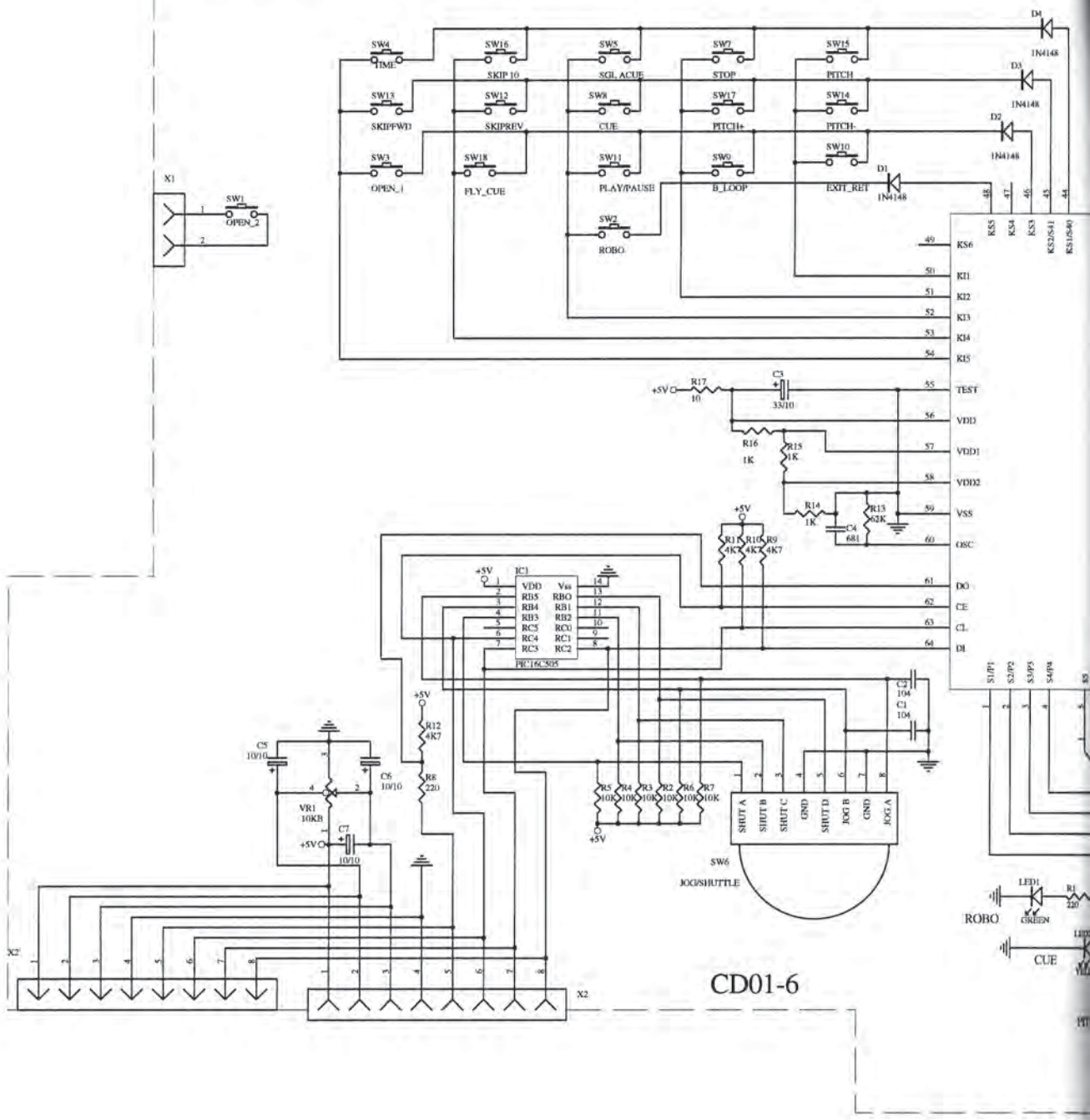
Title		
Size	Number	Revision
C		
Date:	7-Aug-2003	Sheet of
File:	HELECONIDA/CD01-5.SCH	Drawn By:



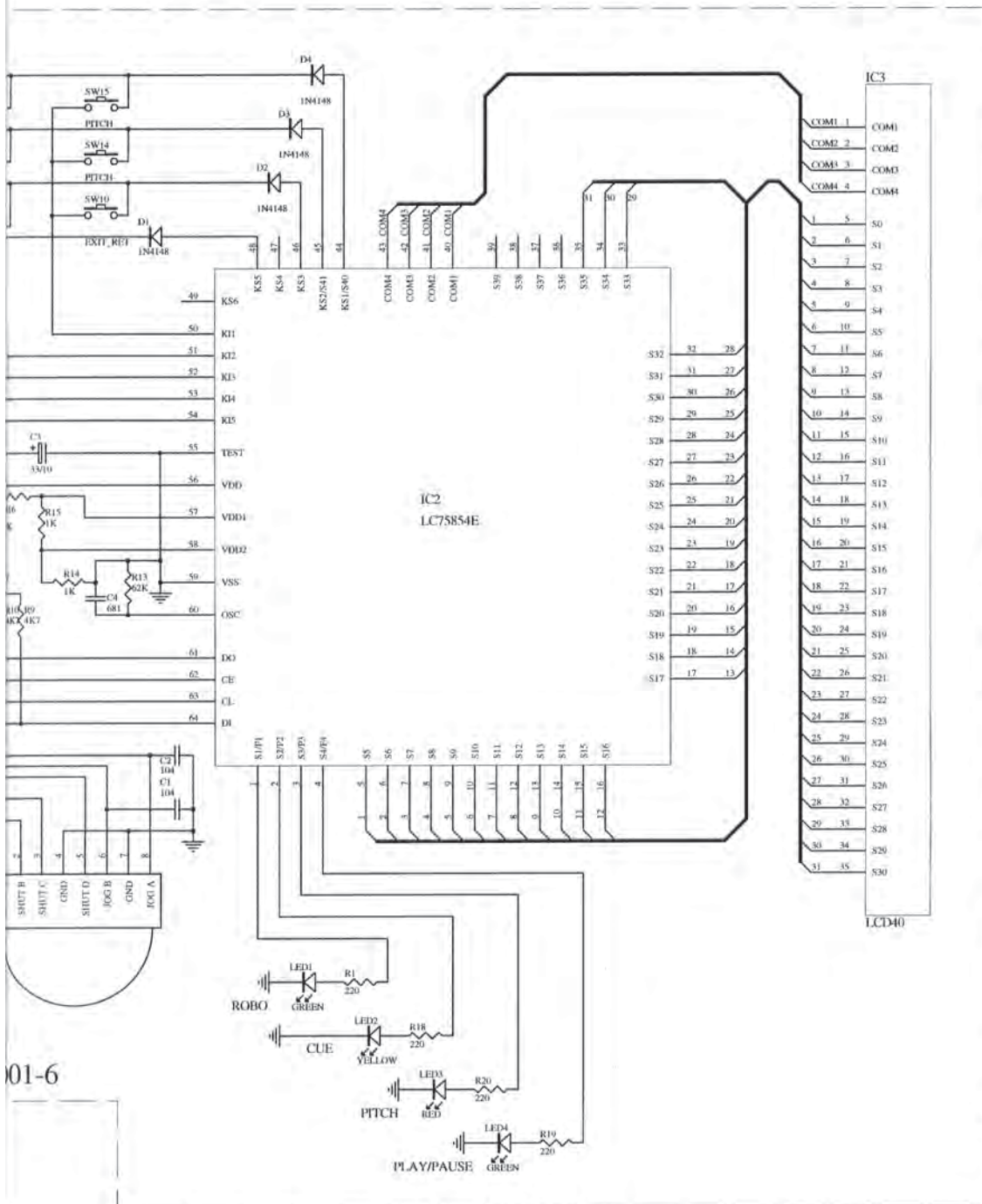
pwr7.sch

CDX802-2





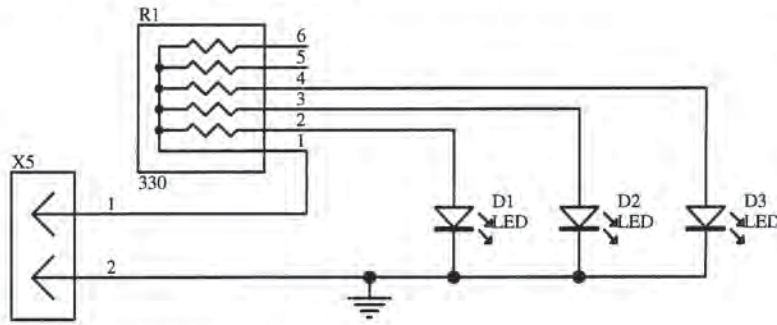
1. LED1
2. SW1
3. X2' is



**NOTES:**

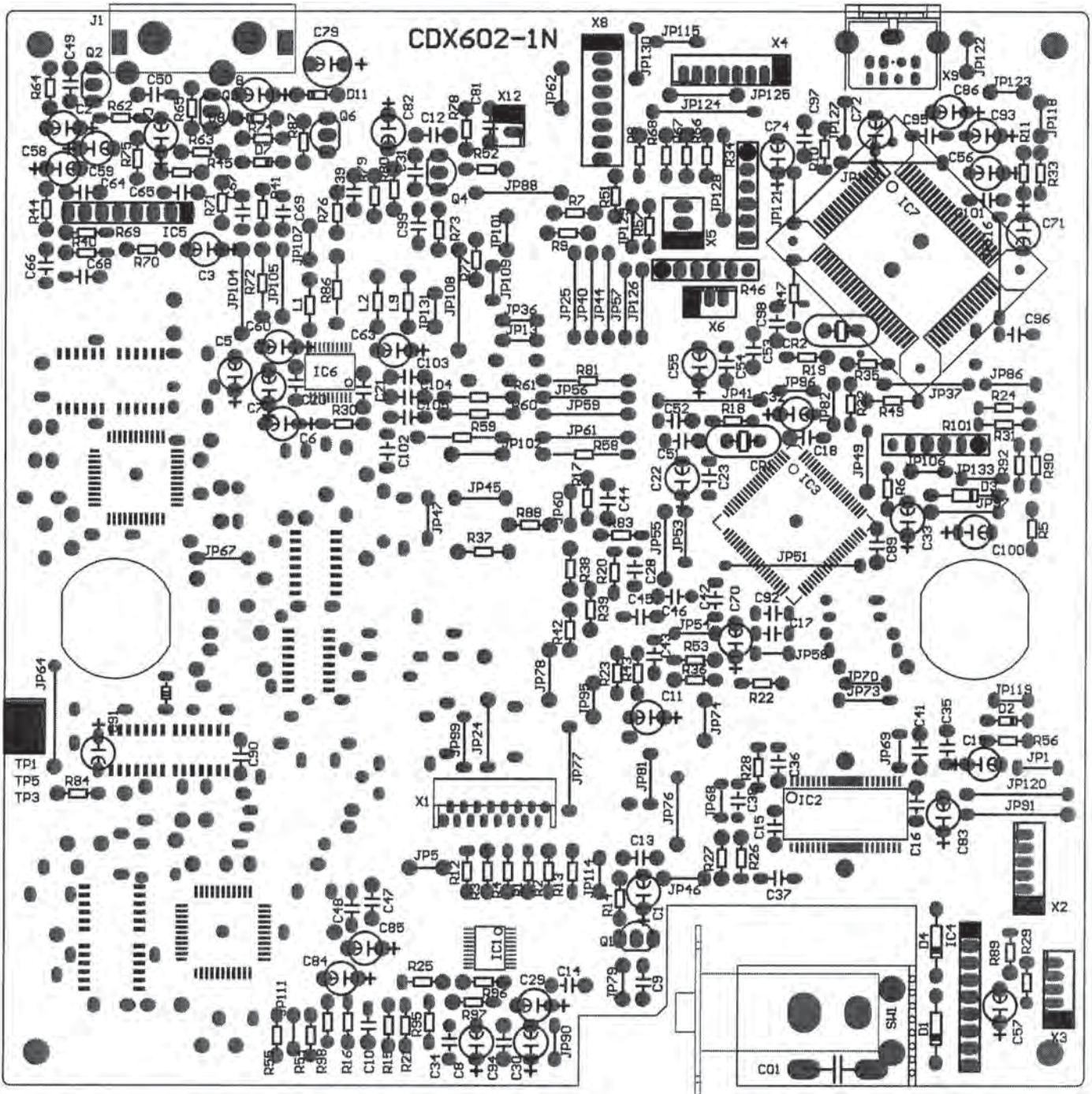
1. LED1;LED2;LED3;LED4 - LOW CURRENT DIODES.
2. SW1, SW2 AND X1, X2, are not set for single unit.
3. X2' is not set for double unit.

Title		
Size	Number	Revision
C	7-Aug-2003	Sheet of
File	TELEONDA_VCD01-6.5U1	Drawn By



## CDX602/802-LED

NOTES: D1,D2,D3 - GREEN LED'S



## CDX-602N

