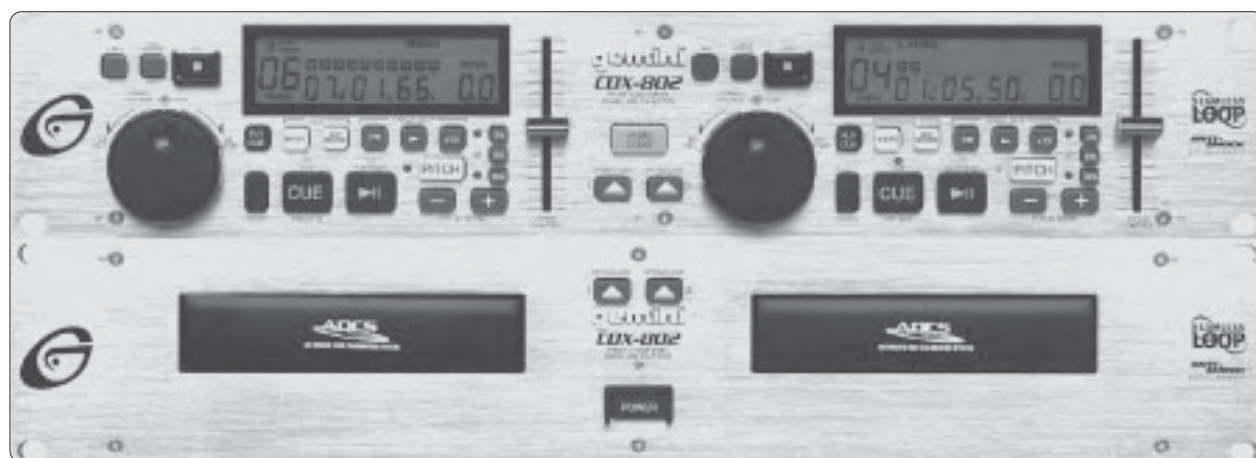




SERVICE manual

CDX-802

Professional CD Player



CONTENT'S:

Connections & Operations:.....	Page 2-4
Specifications:.....	Page 4
Parts Lists:.....	Page 5-7
PCBs:.....	Page 8-11
Schematics:.....	Page 12-19



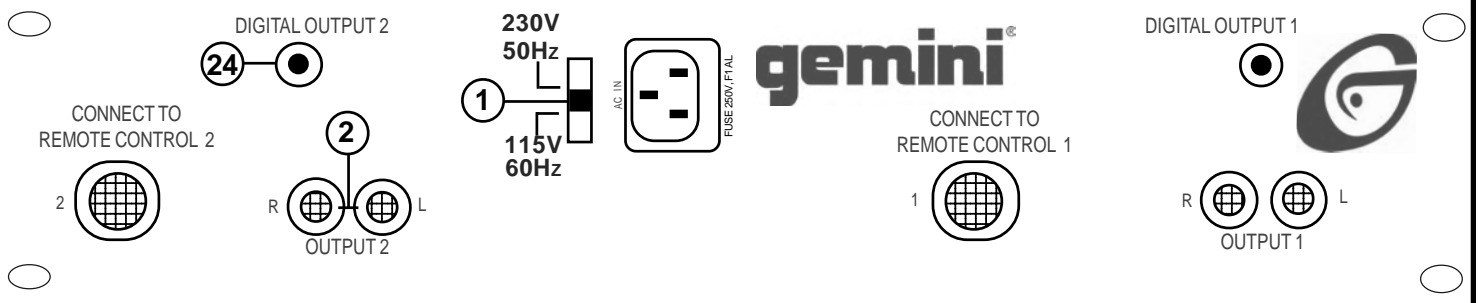
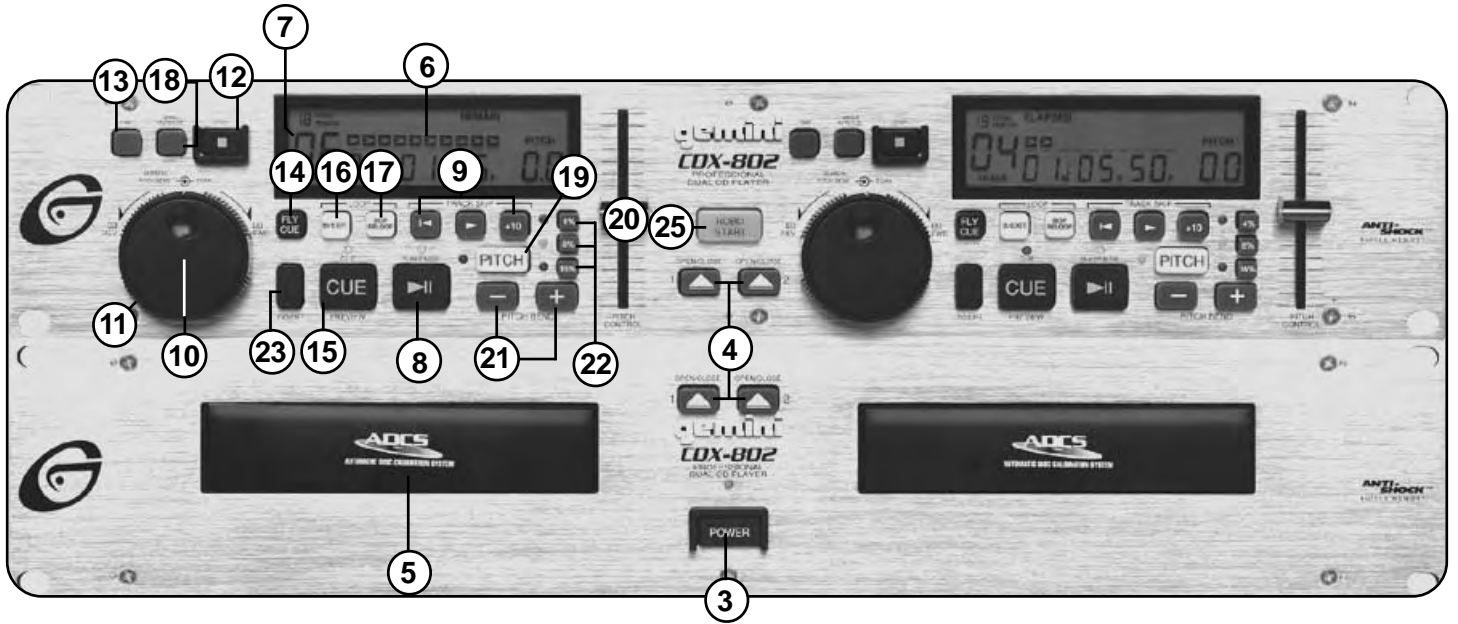
Gemini Sound Products Corp.

120 Clover Place P.O. Box 6928

Edison, NJ 08818-6928

732-738-9003 (Phone) • 732-738-9006 (Fax)

CDX-802



INTRODUCTION:

Congratulations on your purchase of a **Gemini CDX-802** CD Player. Your state-of-the-art professional CD Player is backed by a three year warranty that excludes lasers, which are covered by a separate one year warranty. Prior to use of this unit, we suggest you carefully read the following instructions.

Your **Gemini CDX-802** CD Player comes equipped with **ADCS (Automatic Disc Calibration System)**, a unique state-of-the-art feature. CDs are produced by a variety of manufacturers and recorded by many different professional companies as well as the do-it-yourselfers at home. Therefore, all CDs do not play the same. The **ADCS** automatically adjusts the laser in your **CDX-802** CD Player for each individual CD you insert into the tray, to give you the best possible performance for every CD you play regardless of how it was manufactured or how it was recorded. With this exclusive system you always get consistent and reliable performance as well as exceptional sound quality every time you play a CD... any CD.

CAUTIONS:

1. Do not use this **CD** player at temperatures below **41°F/5°C** or higher than **95°F/35°C**.
2. The apparatus should not be exposed to dripping or splashing, and no objects filled with liquids such as vases should be placed on the apparatus.
3. Place the unit in a clean and dry location.
4. Do not place the unit in an unstable location.
5. When disconnecting the power cord from an **AC** outlet, always grasp it by the plug. Never pull the power cord.
6. To prevent electric shock, do not remove the cover or the bottom screws. There are no user serviceable parts inside. Please refer servicing to a qualified technician.
7. Do not use chemical solvents to clean the unit.
8. Keep the laser pickup clean by keeping the tray closed.
9. Keep this manual in a safe place for future reference.

SAFETY CERTIFICATIONS:

Laser Diode Properties

Material: Ga - Al - As

Wavelength: 755 - 815 nm (25° C)

Laser Output: Continuous Wave, max. 5mW

LINE VOLTAGE SELECTION:

The Gemini **CDX-802** CD Player is a dual voltage unit operating at **115** or **230** volts. Be sure to set the proper voltage:

1. Place the head of a screwdriver in the center of the **VOLTAGE SELECTOR (1)** switch found on the rear panel.
2. Slide the switch to **115** or **230** volts.
3. Do not force or twist the switch. Excessive force may cause damage. If the switch does not move smoothly, contact a qualified technician.

CONNECTIONS:

1. Plug one end of a set of **RCA** connectors into the two **LINE OUTPUT JACKS (2)** on the back of your CD unit.
2. Plug the other end of the **RCA** connectors into any of the available line level input jacks on your mixer. If you are playing the **CDX-802** through a receiver, you can plug the **RCA** connectors into the **CD** or **AUX INPUT JACKS** located on the receiver. If there are no **CD** or **AUX INPUTS**, use any line level (**not phono**) input.

FUNCTIONS:

POWER SWITCH: After making sure the **VOLTAGE SELECTOR (1)** switch is properly set, plug the unit in and press the **POWER (3)** button. The unit will turn on. Pushing **POWER (3)** a second time turns the unit off.


DISC TRAY: The **DISC TRAY (5)** is where the CD is held during loading, unloading and playback. Pressing **OPEN/CLOSE (4)** opens or closes the tray. The **DISC TRAY (5)** holds both **12 cm** and **8 cm** CDs and automatically closes after remaining open for three minutes.

NOTE: TRAY WONT OPEN WHEN THE CDX-802 IS IN THE PLAY MODE.

OPEN/CLOSE: Press **OPEN/CLOSE (4)** to load or remove a CD from the **DISC TRAY (5)**.

DISPLAY: The **DISPLAY (6)** shows total tracks; track number; pitch value; single-auto cue; continue (continuous play); and three different time displays: track time elapsed, track time remaining and total time remaining on disc. Time is measured in minutes, seconds and frames.


PLAYBACK DISPLAY: The **PLAYBACK DISPLAY (7)** displays the play time remaining for each track. The display flashes slowly when the track has **15** seconds remaining and pulses rapidly when play time is down to five seconds.

PLAY/PAUSE : Each press of **PLAY/PAUSE (8)** causes the operation to change from **PLAY** to **PAUSE** or **PAUSE** to **PLAY**.

TRACK SKIP  : The **TRACK SKIP (9)** buttons let you select the track to play.

SEARCH JOG WHEEL: The **SEARCH JOG WHEEL (10)** has two functions. Use the **SEARCH JOG WHEEL (10)** to make fine adjustments in **PAUSE** mode. Use the **SEARCH JOG WHEEL (10)** to bend the pitch for precise synchronization in **PLAY** mode.

SEARCH DIAL: Use the **SEARCH DIAL (11)** to select the scanning direction and speed of your CD. Turning the dial in a clockwise direction scans forward while a counter-clockwise turn scans the track in reverse. Scan speed increases as the dial is turned.

STOP : The **STOP (12)** button ends CD play.

TIME: The **TIME (13)** button switches the time display between the three available choices listed under **DISPLAY (6)**.

FLY CUE: The **FLY CUE (14)** function lets you set cues "on the fly" with the press of a button. Press **FLY CUE (14)** when the disc reaches the musical location you wish to make your cue or start point. The cue point is now programmed. Press **CUE (15)** to return to the cue point. Press **PLAY/PAUSE (16)** and the unit starts from the pre-programmed spot.


CUE: With the unit in the **PLAY** mode (**PLAY/PAUSE LED** is green) and after the cue point has been programmed, pressing **CUE (15)** will cause the CD player to enter the **PAUSE** mode (green **PLAY/PAUSE LED** blinks) at the programmed cue point (the **CUE LED** glows yellow). Holding down the **CUE (15)** button changes the function to **PREVIEW** and starts the CD from the programmed cue point. Releasing the **CUE** button (**15**) will return the CD laser to the preset cue point.

LOOP: After a cue point is memorized, pressing the **B/EXIT (16)** button in **PLAY** mode, (the **CUE LED** blinks yellow), repeats the section between the cue point and the point where the **B/EXIT (16)** button was pressed. Press the **B/EXIT (16)** button again or pause play to exit the repeating play.

BOP/RELOOP: The **BOP/RELOOP (17)** button has two functions. To return to a previously saved loop from normal play, press the **BOP/RELOOP (17)** button after saving the loop. To return to and instantly play from a previously saved cue point, press the **BOP/RELOOP (17)** button after setting the cue point (if you do not have a loop saved).

SINGLE-AUTO CUE/CONTINUOUS: Pressing **SINGLE-AUTO CUE/CONTINUOUS (18)** activates the **AUTO CUE FUNCTION**. The **AUTO CUE** causes the CD to pause at the recorded beginning of the next track and allows you to start play into the next song with no space in between songs. Pressing **SINGLE-AUTO CUE/CONTINUOUS (18)** a second time will activate the **CONTINUOUS** function. This causes the CD to repeat play continuously until **SINGLE-AUTO CUE/CONTINUOUS (18)** is pressed a third time to deactivate the **CONTINUOUS** function.

PITCH: Pushing the **PITCH** button (**19**) activates the **PITCH** section of the unit (**PITCH LED** glows red). The pitch of the CD will change according to the position of the **PITCH SLIDE (20)**.

PITCH BEND : Pushing the **PITCH BEND (21)** buttons will automatically raise the pitch up to **+4%** or lower the pitch down to **-4%** from the existing setting. Releasing the buttons returns pitch to the original setting. Use this function to match the pitch bend when mixing from one song to another.

4%, 8% and 16%: Use the **4%, 8% and 16% (22)** buttons to assign the percent the pitch control slide will have. The **4%** button will assign +/- **4%** to the **PITCH CONTROL SLIDE (20)**. The **8%** button will assign +/- **8%** to the **PITCH CONTROL SLIDE (20)**. The **16%** button will assign +/- **16%** to the **PITCH CONTROL SLIDE (20)**. The **PITCH (19)** must be **ON** for the **4%, 8% and 16% (22)** buttons to work.

INSERT: Set a cue point (using the **CUE (15)**, **FLY CUE (14)** or **SEARCH JOG WHEEL (10)**). From this cue point you will be able to sample up to **10** seconds of a musical phrase or sound. When you push and hold the **INSERT (23)** button you will be able to insert that phrase or sound at any spot in the music that is currently playing, replacing what is playing in that spot with up to **10** seconds of the piece you have sampled. When you release the **INSERT (23)** button the music will continue uninterrupted.

NOTE: YOU CAN ONLY USE YOUR "SAMPLE" WITH YOUR CURRENT CD. ONCE YOU OPEN THE DISC TRAY TO CHANGE CDS, YOUR "SAMPLE" WILL BE AUTOMATICALLY DELETED.

DIGITAL OUTPUT JACK: Connecting any type of **DAT, MD, HARD DRIVE**, or other such items which accept digital signals to the **BNC (24)** output connector on the rear panel of your **CDX-802** allows you to record a digital signal from CD.

OPERATING INSTRUCTIONS:

1. Make sure that the **VOLTAGE SELECTOR SWITCH (1)**, found on the rear panel, is set for the proper voltage. Plug the unit in and press the **POWER SWITCH (2)**. The unit is **ON**. Pushing **POWER (1)** a second time turns the unit **OFF**.
2. Press **OPEN/CLOSE (4)** and place a CD in the **DISC TRAY (5)**. Press **OPEN/CLOSE (4)** again. The tray will close.
3. Push **TRACK SKIP (9)** to select the track you wish to play.
4. Press **PLAY/PAUSE (8)** and the unit will instantly play.

FLY CUE & CUE INSTRUCTIONS:

The **FLY CUE (14)** function lets you set cues "on the fly" with the press of a button. Press **FLY CUE (14)** when the disc reaches the musical location you wish to make your cue or start point. The cue point is now programmed. Press **CUE (15)** to return to the cue point. Press **PLAY/PAUSE (8)** and the unit instantly starts from this pre-programmed spot.

AND/OR:

1. To pre-program a cue point (the spot on a CD at which you want play to start) select the proper track and push **PLAY/PAUSE (8)** so the unit enters the **PLAY** mode (**PLAY/PAUSE LED** glows green). When the CD reaches the approximate musical spot you wish to make your cue, push **PLAY/PAUSE (8)** so the unit enters the **PAUSE** mode (**PLAY/PAUSE LED** blinks). Move the **SEARCH JOG WHEEL (10)** forward or in reverse until the precise spot at which you want CD play to begin is located. Push **PLAY/PAUSE (8)**. The cue point is now programmed. Press **CUE (15)** to return to this pre-programmed cue point at any time. Push **PLAY/PAUSE (8)** and the unit will instantly play from the pre-selected spot.
2. To fine tune your pre-programmed cue point, push **PLAY/PAUSE (8)** so the unit enters the **PLAY** mode. Push the **CUE** button (**15**) and the CD will return to the cue point you programmed in step #1 and begin play from that point. If you decide this cue or starting point is okay, leave the unit alone until you are ready to play.
3. If, however, the selected spot is not exactly where you want it, push the **CUE (15)** button while the CD is playing and the disc will return to the pre-programmed cue point. Locate the *exact* spot on the CD at which you want play to start by turning the **SEARCH JOG WHEEL (10)**. Push **PLAY/PAUSE (8)** to pre-program this new cue point. Press the **CUE (15)** button to pause play at the new cue point. Push **PLAY/PAUSE (8)** at any time and the unit will play from the pre-selected spot.

ROBO START INSTRUCTIONS:

IN SINGLE-AUTO CUE MODE:

Use **ROBO START (25)** in **SINGLE-AUTO CUE MODE** to alternate play between the **CDX-802's** two CD players (one track from one side, then one from the other). In **SINGLE-AUTO CUE MODE** play starts immediately with no blank or "dead" space. **ROBO START (25)** causes one side of the CD player to play when the other side is paused.

1. Engage **SINGLE-AUTO CUE MODE** with the **SINGLE-AUTO CUE/CONTINUOUS (18)** button.
2. Press the **ROBO START (25)** button to activate **ROBO START (25)**. Play will alternate between the two CD players. At the end of a track, the playing side pauses and the other CD deck plays a track. At the end of this track, the playing side pauses and the first CD deck resumes play.

IN CONTINUOUS MODE OR DURING NORMAL PLAY:

If you use the **ROBO START (25)** function without **SINGLE-AUTO CUE MODE** (in **CONTINUOUS MODE** or during normal play), CD deck play does not alternate automatically. The **PLAY/PAUSE (8)** button must be pressed on the playing deck for the second deck to play.

1. During normal play, set a cue point on the second CD deck.
2. Press the **ROBO START (25)** button to activate **ROBO START**.
3. Press **PLAY/PAUSE (8)** button on the playing side to start play from the cue point on the other CD deck.

NOTE: PAUSING PLAY IN THE MIDDLE OF A TRACK CAUSES THE OTHER CD DECK TO PLAY. WHEN THE NEW TRACK ENDS, PLAY RESUMES ON THE FIRST CD PLAYER FROM THE POINT AT WHICH IT WAS PAUSED.

TROUBLESHOOTING:

- If a disk will not play, check to see that it was loaded correctly (label side up) and that the CD unit is on a flat, level, stable surface. Check disc for dirt, scratches, spills, etc.
- If the disc spins but there is no sound, check the cable connections. If they are okay, check your amplifier or receiver.
- If the CD skips, check it for dirt, oil or scratches. Do not assume that the CD player or laser is defective. Many CDs are recorded "out of spec" and skip on most or all CD players. Before sending the unit to an authorized Gemini service technician, insert a disc that plays properly in another unit.

SPECIFICATIONS:

GENERAL:

Type.....Compact Disc Player
Disc Type.....Standard Compact discs (12 cm & 8 cm)
Time Display.....Track Elapsed, Track Remain, or Total remain
Instant Start.....Within 0.015 seconds
Track Selection.....1 to 99 Tracks
Installation.....19" each
Dimensions.....19" x 3.5" x 10"
Weight Per Unit.....9.5 lbs.

AUDIO SECTION:

Quantization.....16 Bit Linear/Channel, 3 Beam Laser
Oversampling Rate.....8 Times
Sampling Frequency.....44.1 kHz
Frequency Response.....20 Hz to 20 kHz
Digital Output.....IEC958
Total Harmonic Distortion.....Less Than 0.05%
Signal to Noise Ratio.....100 dB
Dynamic Range.....96 dB
Channel Separation.....90 dB (1 KHz)
Output Level.....1.9 Volts R.M.S.
Power Supply.....AC 115/230V, 60/50 Hz

Specifications and design are subject to change without notice for purpose of improvement.

NOTE: IF YOU PRESS OPEN/CLOSE (4) WHEN A DISC IS BEING READ AFTER LOADING, THE DISC TRAY WILL PAUSE, FOR A MOMENT BEFORE OPENING.

PARTS LIST:

CDX-802 (MAIN)

ITEM	PART NUMBER	Q'TY	ENGLISH NAME
1	012-054	1	PANEL CONTROL
2	031-040	1	TOP COVER
3	032-128	1	BOTTOM COVER
4	021-604	1	SUB PANEL
5	041-479	1	HEAT SINK
6	022-860	2	MOUNTING BRACKET
7	041-480	2	HEAT SINK (C)
8	003-737	2	DESK DOOR
9	002-573	1	KNOB PUSH (DA)
10	003-743	1	PUSE KEY INLAY (DA)
11	002-576	1	KNOB PUSH KEY ASS'Y (C)
12	003-739	2	PR OTECTOR INLAY
13	003-711	1	HOLDER LED 3/E (7mm)
14	047-494	6	PCB SUPPORT
15	148-316	1	MANE PLATE (SMALL)
16	049-215	8	PAD FOOT
17	153-213	1	POLYFORM
18	196-165	3	SERIAL NO:LABEL
19	255-238	1	GIFT BOX
20	257-020	1	OWNER'S MANUAL
21	156-089	1	WARRANTY CARD
22	190-062	1	SILICON GEL
23	099-167	1	A LABEL
24	099-168	1	J LABEL
25	099-169	1	V LABEL
26	099-014	1	LABEL -MADE IN TAIWAN
27	099-214	1	LABEL- MADE IN CHINA
28	099-232	2	LABEL- GREEN
29	099-233	2	LAABEL-RED
30	099-234	2	LABEL-YELLOW
31	160-008	1	PE BAG 85x100mm
32	160-009	1	PE BAG 230x300mm
33	160-044	1	PE BAG 160x250mm
34	160-052	1	PE BAG 650x650mm
35	121-002A	16	BAND-HEAD TAPPING SCREW
36	111-046A	14	BAND-HEAD TAPPING SCREW
37	110-172A	6	BAND-HEAD TAPPING SCREW/TWIN SCREW 3x8(AB)
38	101-043	3	FLAT-HEAD MACHINE SCREW3x8(B)
39	110-078	2	PAN-HEAD TAPPING SCREW-2 4x6(B)
40	111-030	1	PAN-HEAD TAPPING SCREW4x6(B)
41	111-044A	4	BAND-HEAD TAPPING SCREW ("NUT") 3x10(AB)
42	111-057	6	FLAT-HEAD TAPPING SCREW 3x6(Z)
43	131-081	3	NUT/WASHER 3mm
44	170-396		MASTER CARTON
45	262-393	2	PRINTED CIRCUIT BOARD CDX802-1
46	262-291	1	PRINTED CIRCUIT BOARD CD01-4
48	262-394	1	PRINTED CIRCUIT BOARD CDX802-2
49	262-395	2	PRINTED CIRCUIT BOARD CDX802-3
50	094-204	2	16P FLAT CABLE 110mm P=1mm
51	003-605	7	CABLE TIES CV-100

PCB 802-2

PART NUMBER	COMMENT	FOOTPRINT	Q'TY	DESIGNATORS
092-083	TO AC CORD	0.156"-2	1	X2
092-083	TO TRANSF.	0.156"-2	1	X6
079-027	1N4002	DIODE10	6	D1, D2,D3, D4, D5, D6
059-236	UH962021	EMC1	1	EMC1
074-074	7805	TO-220	1	IC3
074-186	M317	TO-220	2	IC1, IC4
074-085	79L05	TO-92	1	IC2

PCB 802-7

PART NUMBER	COMMENT	FOOTPRINT	Q'TY	DESIGNATORS
092-147	MINI DIN(092-147)	MINI_DIN	1	X4
074-074	NJM7805	TO-220	1	IC4
092-148	PLUG08(092-148)	X8	1	X3

CDX-802 CONTROL BOX

ITEM	PART NUMBER	Q'TY	ENGLISH NAME
1	012-053	1	PANEL CONTROL
2	031-041	1	COVER
3	021-605	1	TOP ANGLE
4	021-606	1	BOTTOM ANGLE
5	003-427	2	PLATE LAMP
6	003-428	2	LAMP HOLDER
7	002-572	1	KNOB PUSH (CA)
8	003-141	2	KNOB ROTARY (A)
9	003-144	2	KNOB ROTARY (B)
10	002-720	2	KNOB SLIDE
11	148-316	1	MANE PLATE (SMALL)
12	003-738	2	VR INLAY (CA)
13	003-739	2	PR OTECTOR INLAY
14	003-711	14	HOLDER LED 3φ (7mm)
15	002-579	2	KNOB PUSH KEY ASS'Y (A)
16	002-575	2	KNOB PUSH KEY ASS'Y (B)
17	002-576	1	KNOB PUSH KEY ASS'Y (C)
18	003-741	2	PUSE KEY INLAY (CA)
19	159-227	2	VR DUST PROOF CLOTH (CA)
20	099-252	2	LAMP PAPER
21	099-253	2	LAMP LABEL
22	153-212	1	POLYFORM
23	196-165	1	SERIAL NO:LABEL
24	099-014	1	LABEL- MADE IN TAIWAN
25	099-214	1	LABEL- MADE IN CHINA
26	190-062	1	SILICON GEL
27	160-045	1	PE BAG 160x650mm
28	110-172A	4	BAND-HEAD TAPPING SCREW/TWIN SCREW3x8(AB)
29	111-046A	4	BAND-HEAD TAPPING SCREW3x6(AB)
30	121-002A	20	BAND-HEAD TAPPING SCREW3x5(AB)
31	111-057	6	FLAT-HEAD TAPPING SCREW3x6(Z)
32	262-396	1	PRINTED CIRCUIT BOARD CDX802-5
33	262-397	1	PRINTED CIRCUIT BOARD CDX802-6
34	262-398	2	PRINTED CIRCUIT BOARD CDX802-7
35	262-286	2	PRINTED CIRCUIT BOARD CD01-8

PCB 802-1

PART NUMBER	COMMENT	FOOTPRINT	Q'TY	DESIGNATORS
074-182A	BA6392FP	BA6392FP	1	IC2
074-187	SM5902AF	C505	2	IC9, IC8
058-021	16.9344MHZ	CRYSTAL	1	CR1
058-022	16MHZ	CRYSTAL	1	CR2
079-003	1N4148	D10	1	D3
079-027	1N4002	DIODE10	1	D1
079-003	1N4148	DIODE6	4	D11,D8, D7, D2
092-150A	SOCKET16	FPC-16	1	X1
074-194	MM74HCT00M	M14A	1	IC15
074-195	MM74HCT32M	M14A	1	IC14
074-196	74HCT157M	M16A	2	IC13, IC12
092-147	DTN	MINI_DIN	1	X9
074-179	NT511740C5J	NT511740	2	IC11,IC10
074-184	PCM1717E	PCM1717	1	IC6
074-183B	P89C557E4	QFP80-2	1	IC7
074-192	CXD3068Q	QFP-80P	1	IC3
161-173	161-173	RCA2A	1	J1
074-104S	4558LD	SIP8	1	IC5
074-181	BA6218	SIP9	1	IC4
074-191	CXA2550N	SSOP20	1	IC1
076-104	2SA1317	TO-92	1	Q6
076-137	2SA954	TO-92	1	Q1
076-095	2SC2878	TO-92	2	Q3, Q2
	2SC536	TO-92	1	Q4
	083-061	WP001	1	SW1
092-153A	PLUG02	X2MM-2	1	X12
092-154A	PLUG03	X2MM-3	1	X6
092-151A	PLUG05	X2MM-5	1	X3
092-152A	PLUG06	X2MM-6	1	X2
	PLUG08	X2MM-8	1	X4
092-026A	PLUG03	X3	1	X5
092-050A	PLUG08	X8	1	X8

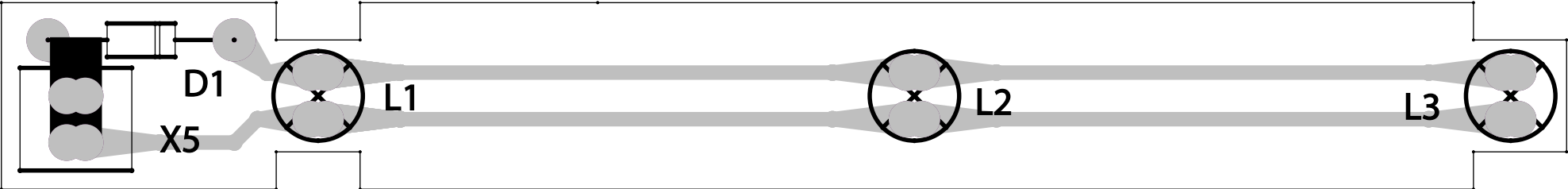
PCB 802-5

PART NUMBER	COMMENT	FOOTPRINT	QUANTITY	DESIGNATORS
079-003	1N4148	DIODE10	1	D4
079-003	1N4148	DIODE6	3	D1, D2
074-171C	PIC16C505	DIP14	1	IC1
083-116	JOG/SHUTTLE	JOG/SHUTTLE	1	SW6
074-180	LC75854E	LC75854E	1	IC2
080-119	GREEN	LED	1	LED4
080-118	RED	LED	4	LED7, LED6
080-062	YELLOW	LED	1	LED2
074-193	TC74HC595AFN	M16A	1	IC4
082-042A	16%	PB1	1	SW3, LED3
082-042A	4%	PB1	1	SW1
082-042A	8%	PB1	1	SW2, LED8
082-042A	B/EXIT	PB1	1	SW9
082-042A	BOP/RELOOP	PB1	1	SW10
082-042A	CUE	PB1	1	SW8
082-042A	FLY_CUE	PB1	1	SW18
082-042A	INSERT	PB1	1	SW23
082-042A	PITCH	PB1	1	SW15
082-042A	PITCH-	PB1	1	SW14
082-042A	PITCH+	PB1	1	SW17
082-042A	PLAY/PAUSE	PB1	1	SW11
082-042A	SGL ACUE	PB1	1	SW5
082-042A	SKIP 10	PB1	1	SW16
082-042A	SKIPFWD	PB1	1	SW13
082-042A	SKIPREV	PB1	1	SW12
082-042A	STOP	PB1	1	SW7
082-042A	TIME	PB1	1	SW4
072-112i	10KB	RS60112	1	VR1
001-081	LCD40	UTN-H241JV	1	IC3
092-044A	SOCKET02	X2	1	X1
092-148	SOCKET08	X8	1	X2

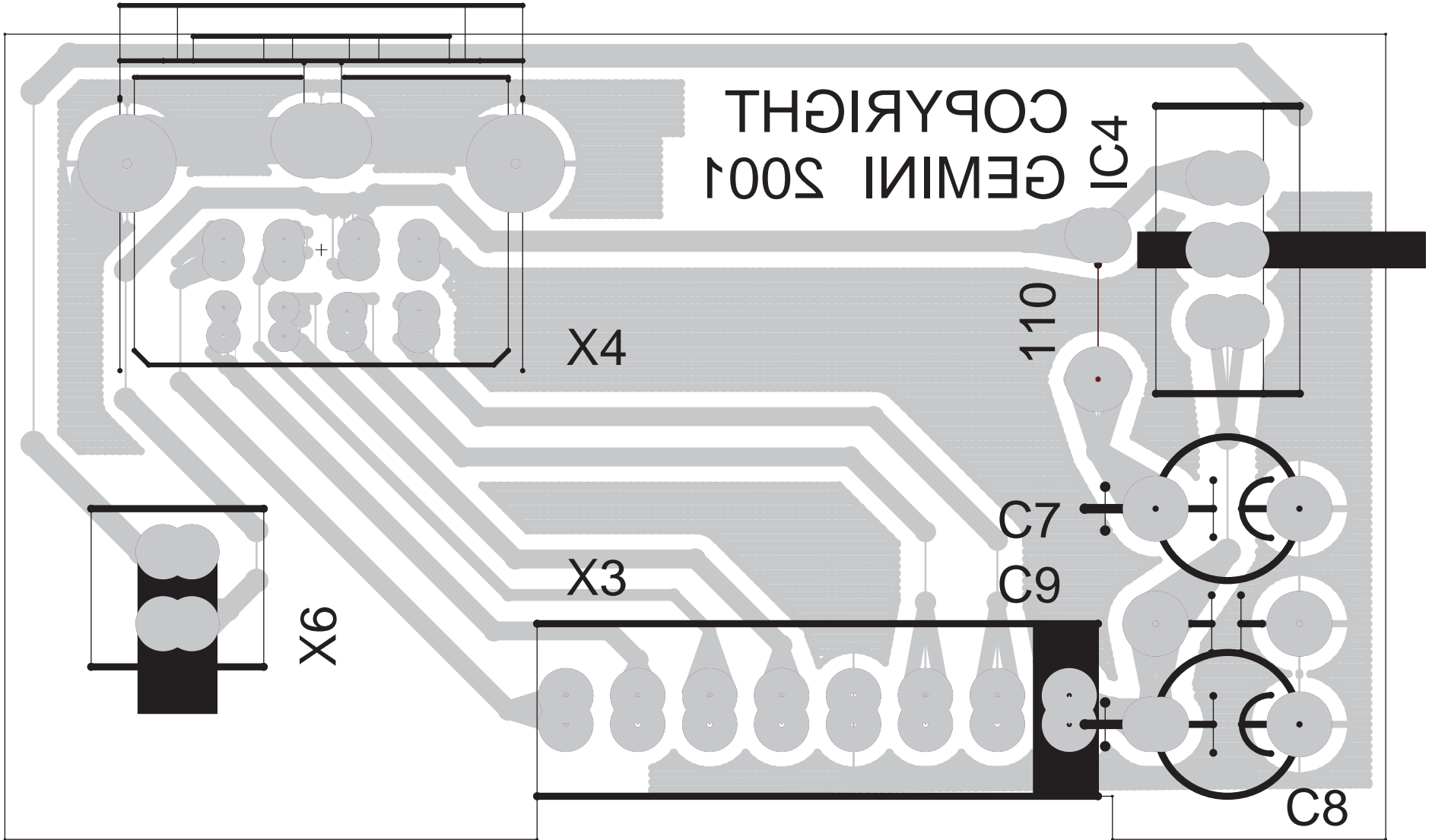
PCB 802-6

PART NUMBER	COMMENT	FOOTPRINT	QUANTITY	DESIGNATORS
079-003	1N4148	D12	1	D1
079-003	1N4148	DIODE6	3	D2, D3, D4
074-171C	PIC16C505	DIP14	1	IC1
083-116	JOG/SHUTTLE	JOG/SHUTTLE	1	SW6
074-180	LC75854E	LC75854E	1	IC2
080-119	GREEN	LED	3	LED4, LED1, LED5
080-118	RED	LED	4	LED3, LED6, LED7, LED8
080-062	YELLOW	LED	1	LED2
074-193	TC74HC595AFN	M16A	1	IC4
082-042A	16%	PB1	1	SW20
082-042A	4%	PB1	1	SW21
082-042A	8%	PB1	1	SW19
082-042A	B/EXIT	PB1	1	SW9
082-042A	BOP/RELOOP	PB1	1	SW10
082-042A	CUE	PB1	1	SW8
082-042A	FLY_CUE	PB1	1	SW18
082-042A	INSERT	PB1	1	SW22
082-042A	OPEN	PB1	1	SW3'
082-042A	OPEN_1	PB1	1	SW3
082-042A	OPEN_2	PB1	1	SW1
082-042A	PITCH	PB1	1	SW15
082-042A	PITCH-	PB1	1	SW14
082-042A	PITCH+	PB1	1	SW17
082-042A	PLAY/PAUSE	PB1	1	SW11
082-042A	ROBO	PB1	1	SW2
082-042A	SGL ACUE	PB1	1	SW5
082-042A	SKIP 10	PB1	1	SW16
082-042A	SKIPFWD	PB1	1	SW13
082-042A	SKIPREV	PB1	1	SW12
082-042A	STOP	PB1	1	SW7
082-042A	TIME	PB1	1	SW4
072-112i	10KB	RS60112	1	VR1
001-081	LCD40	UTN-H241JV	1	IC3
092-044A	SOCKET02	X2	1	X1
092-148	SOCKET08	X8	1	X2

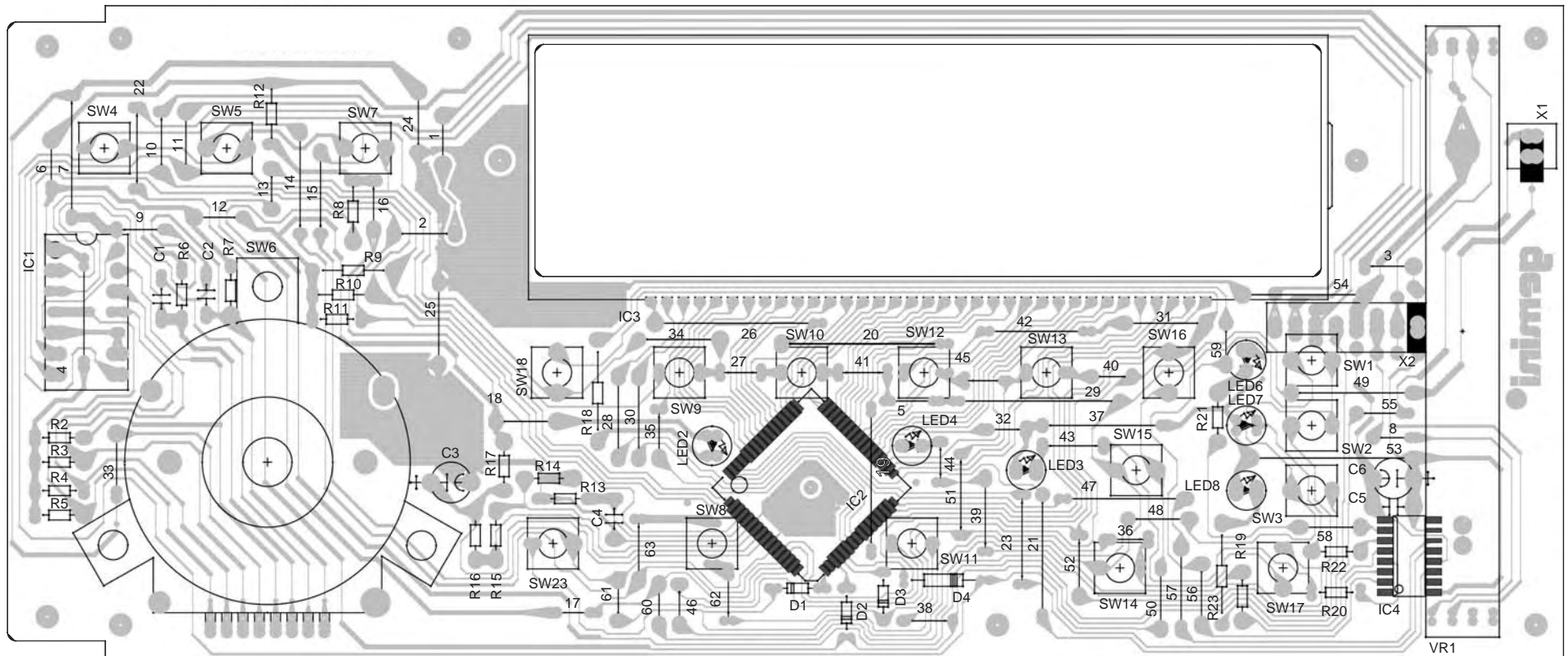
CD01-8-PCB



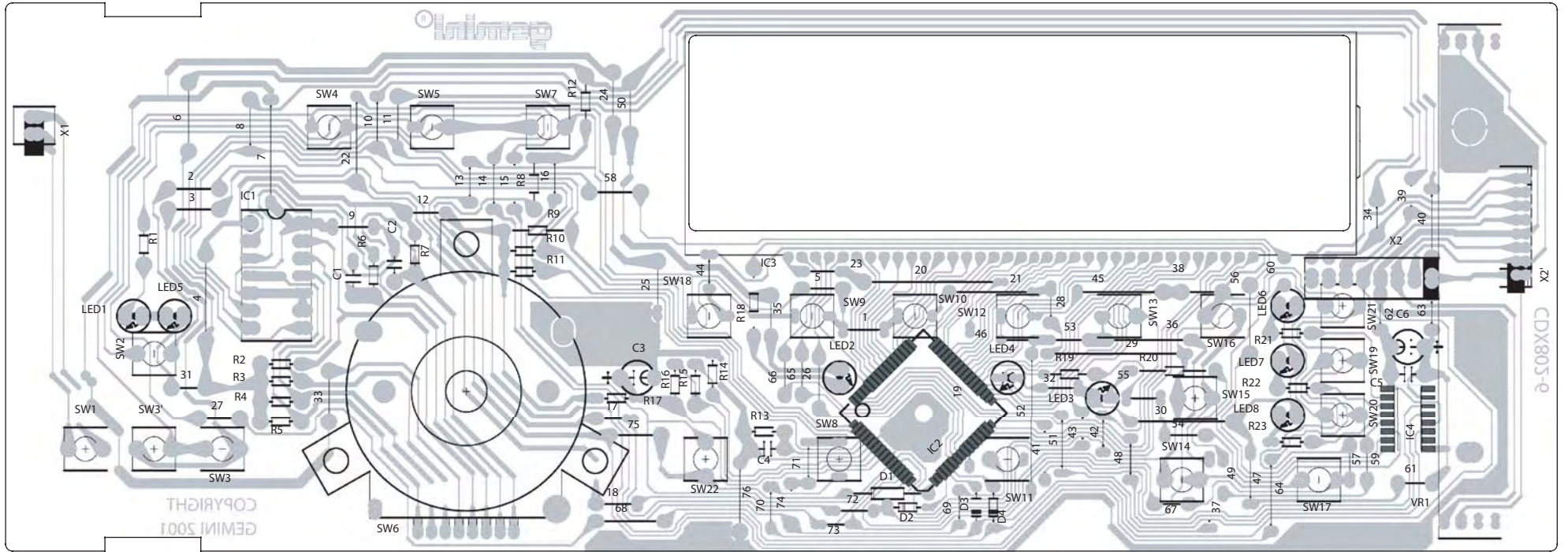
802-7-PCB



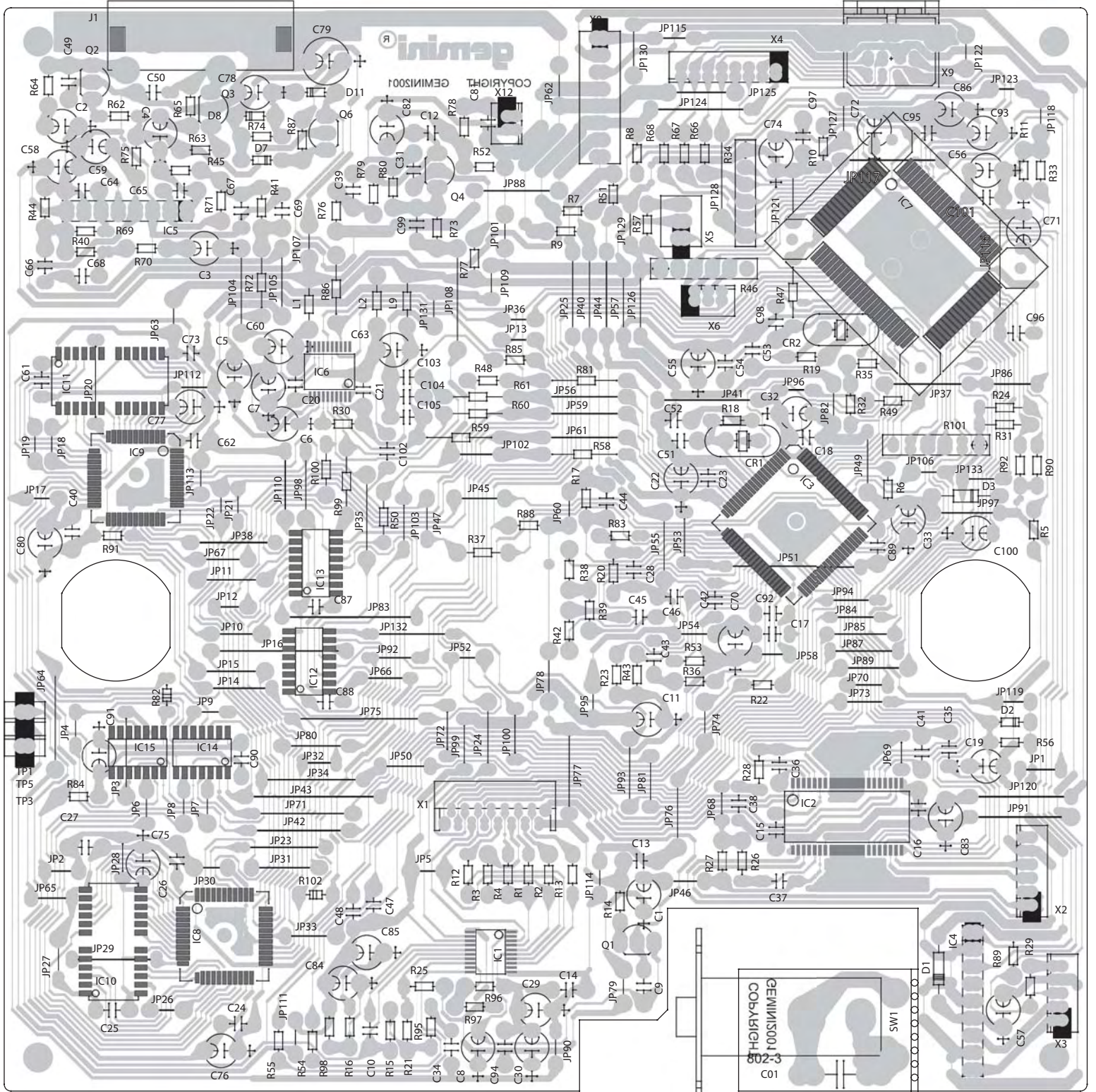
CDX802-5 PCB-Left Side



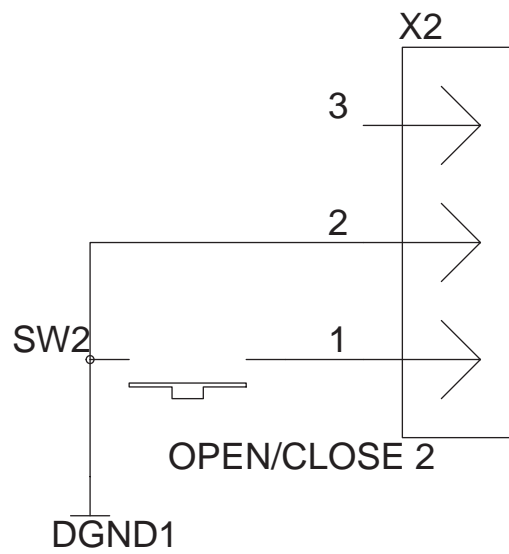
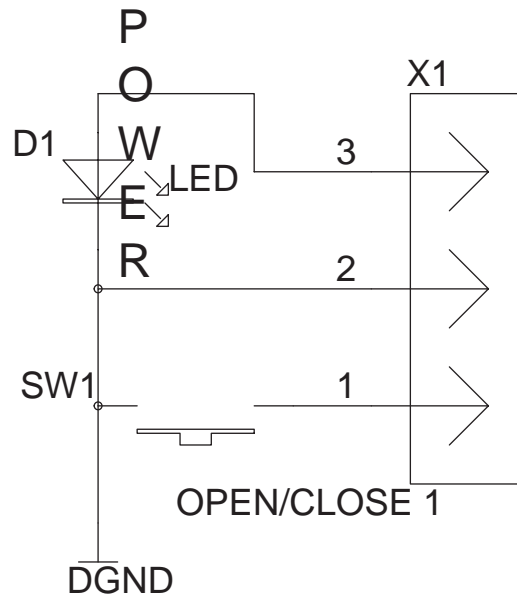
CDX-802-6 Right Side PCB



CDX802-1N-Main PCB

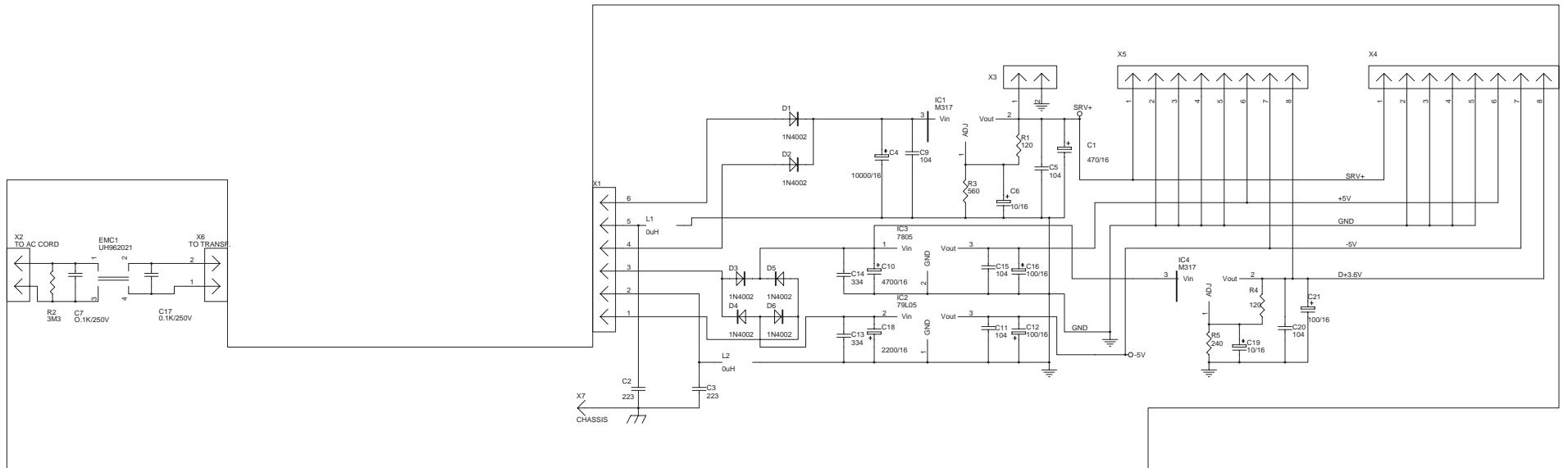


OPEN SW PCB

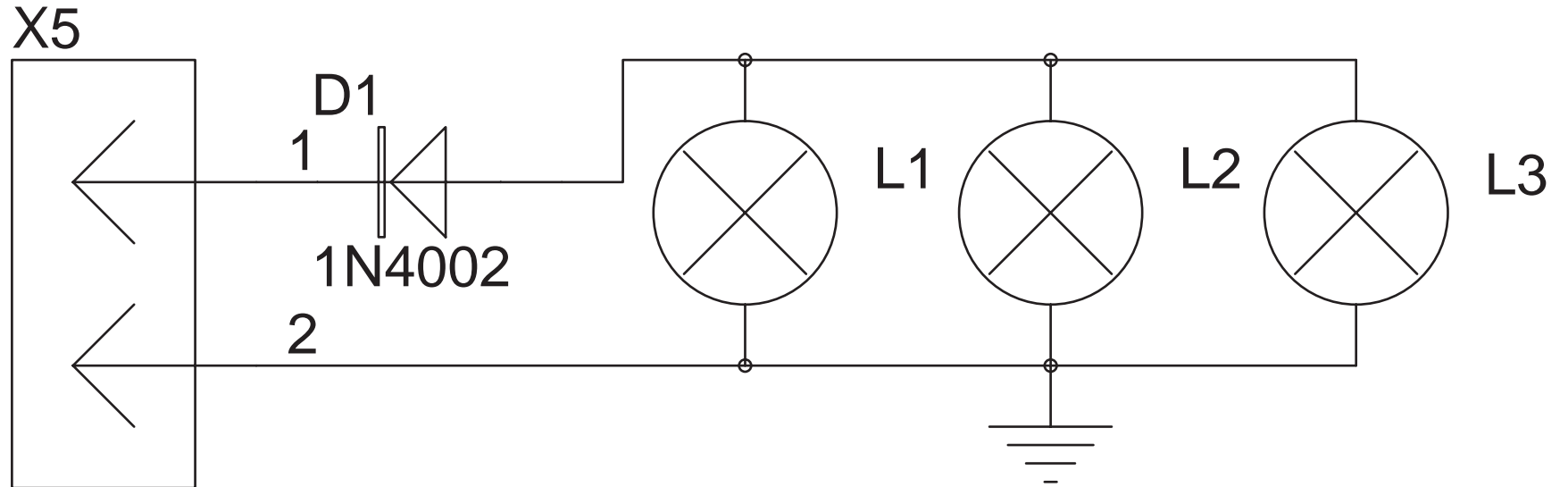


CDX802-4-Schematic

Power Schematic



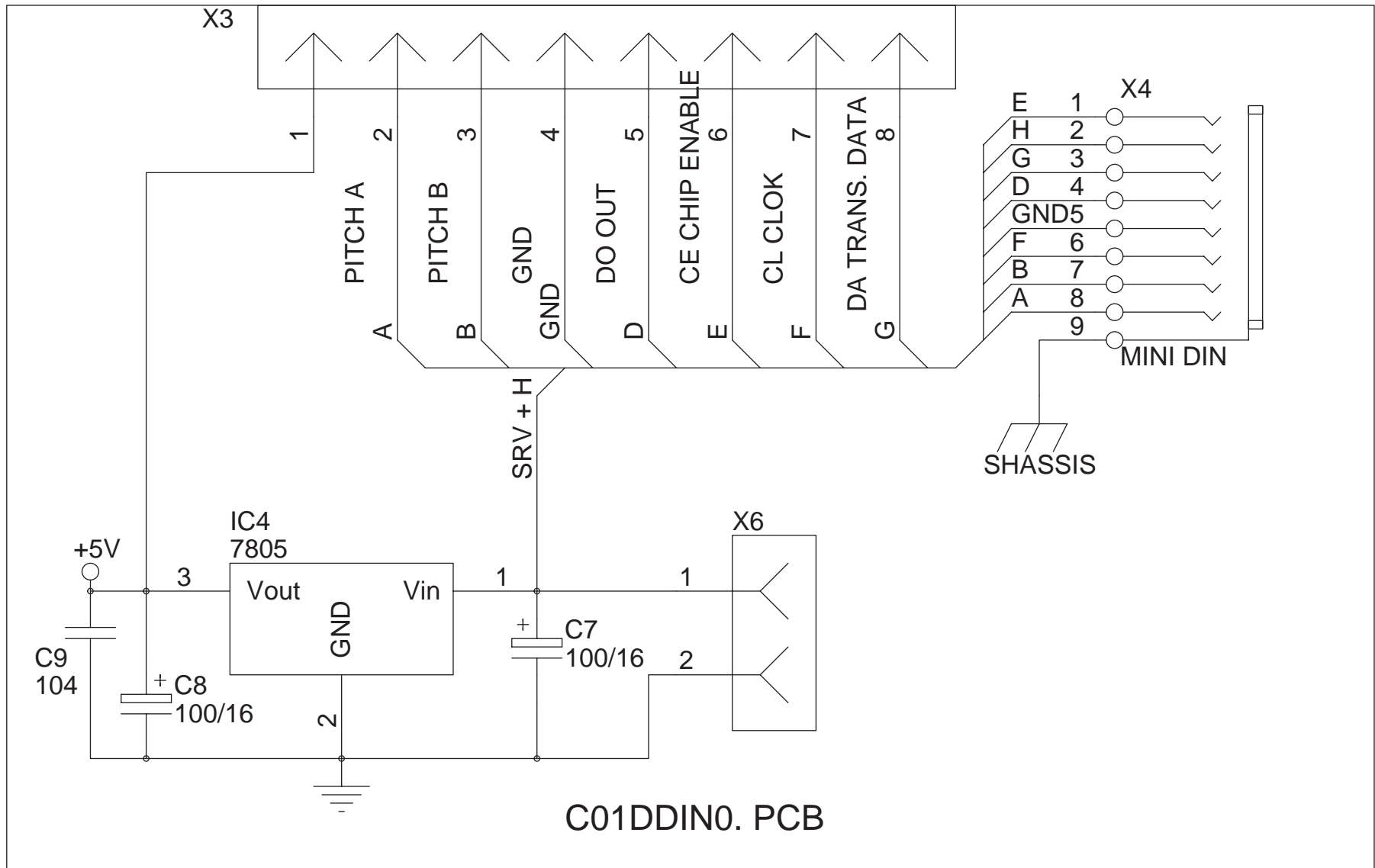
CDX802-8-Schematic

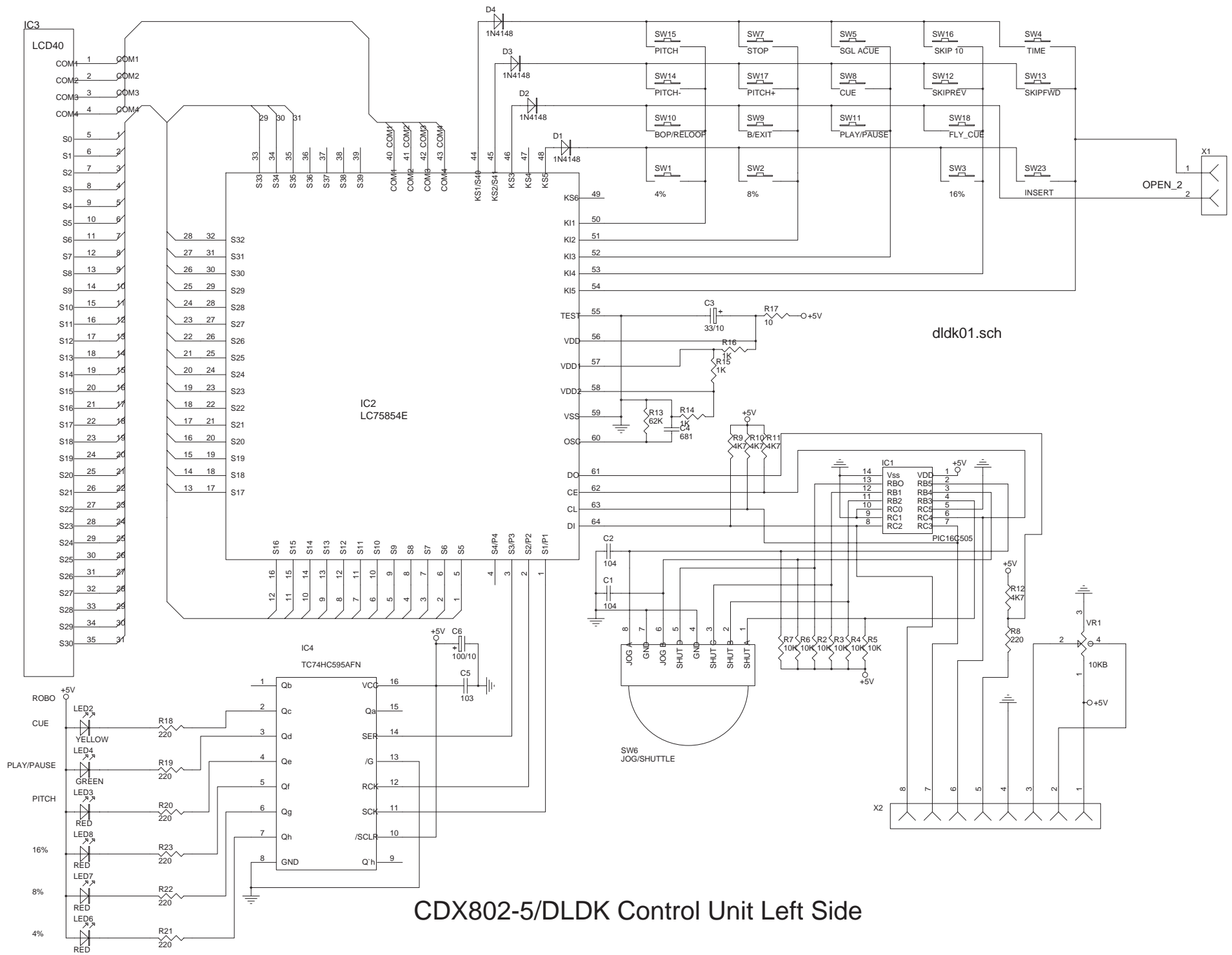


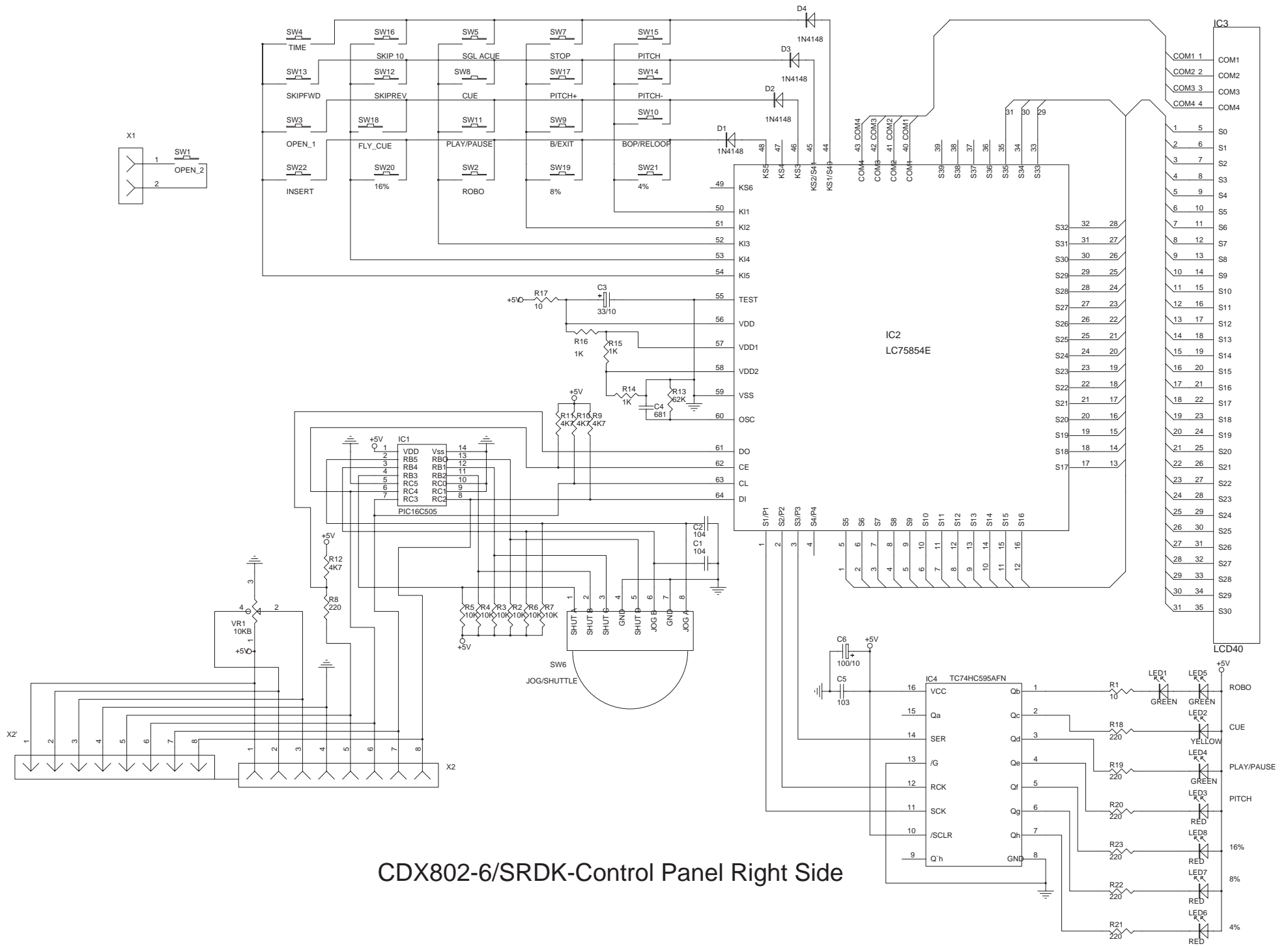
LAMP . PCB

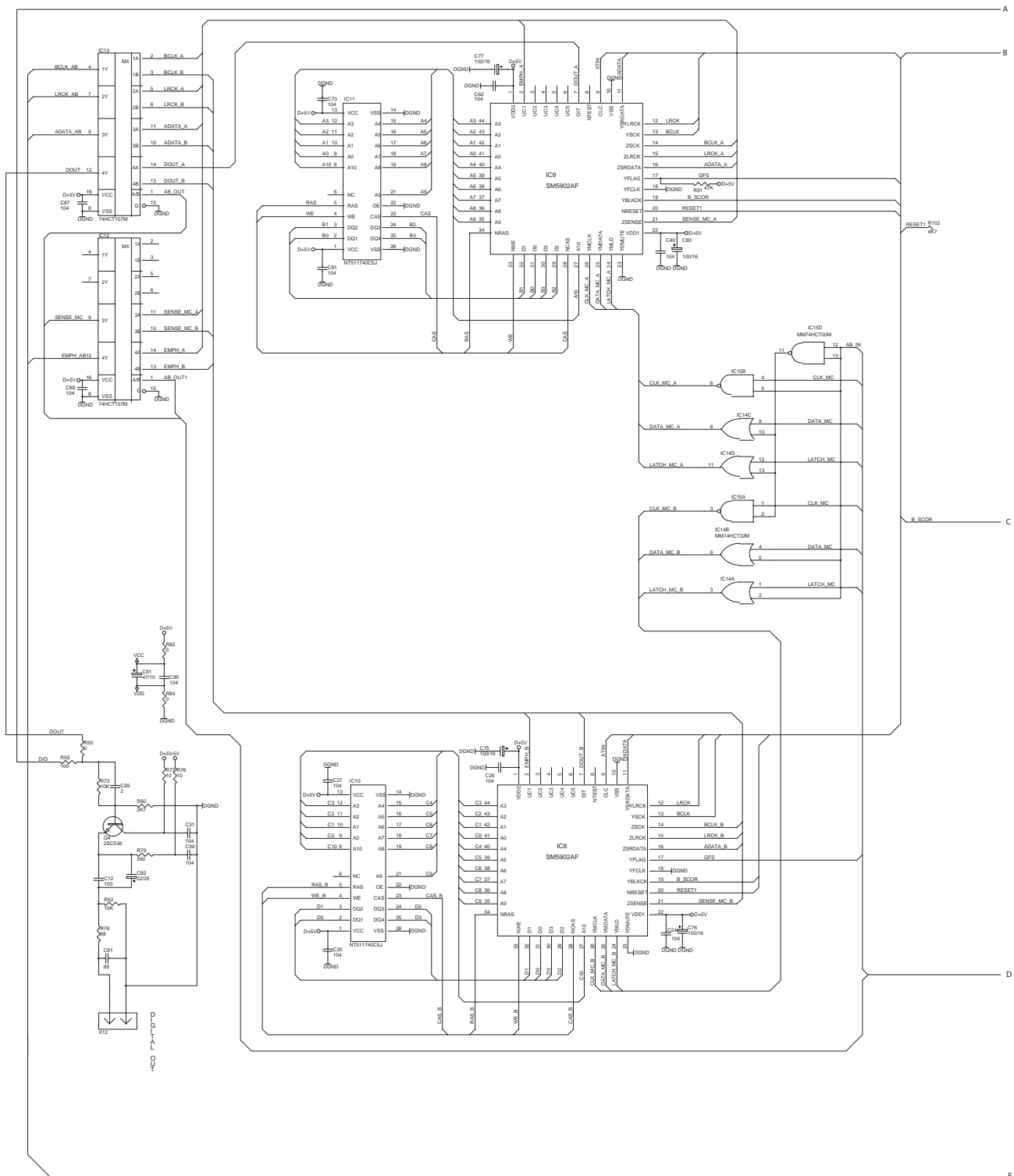
NOTES: L1;L2;L3 - DSPLAY LAMP 7V/42mA

CDX802-7-Schematic

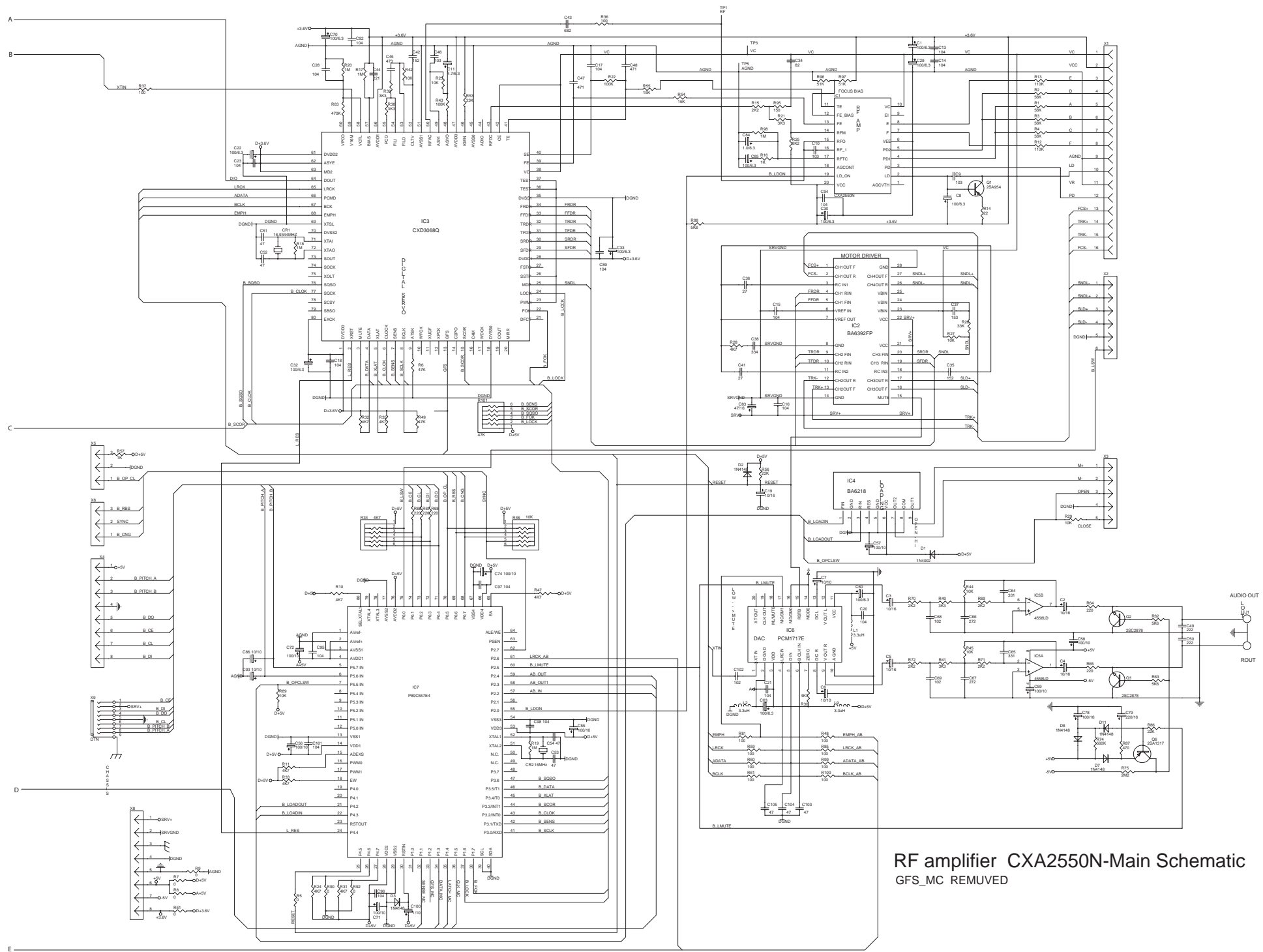








RF amplifier CXA2550N-Main Schematic
GFS_MC REMOVED



RF amplifier CXA2550N-Main Schematic
GFS_MC REMOVED