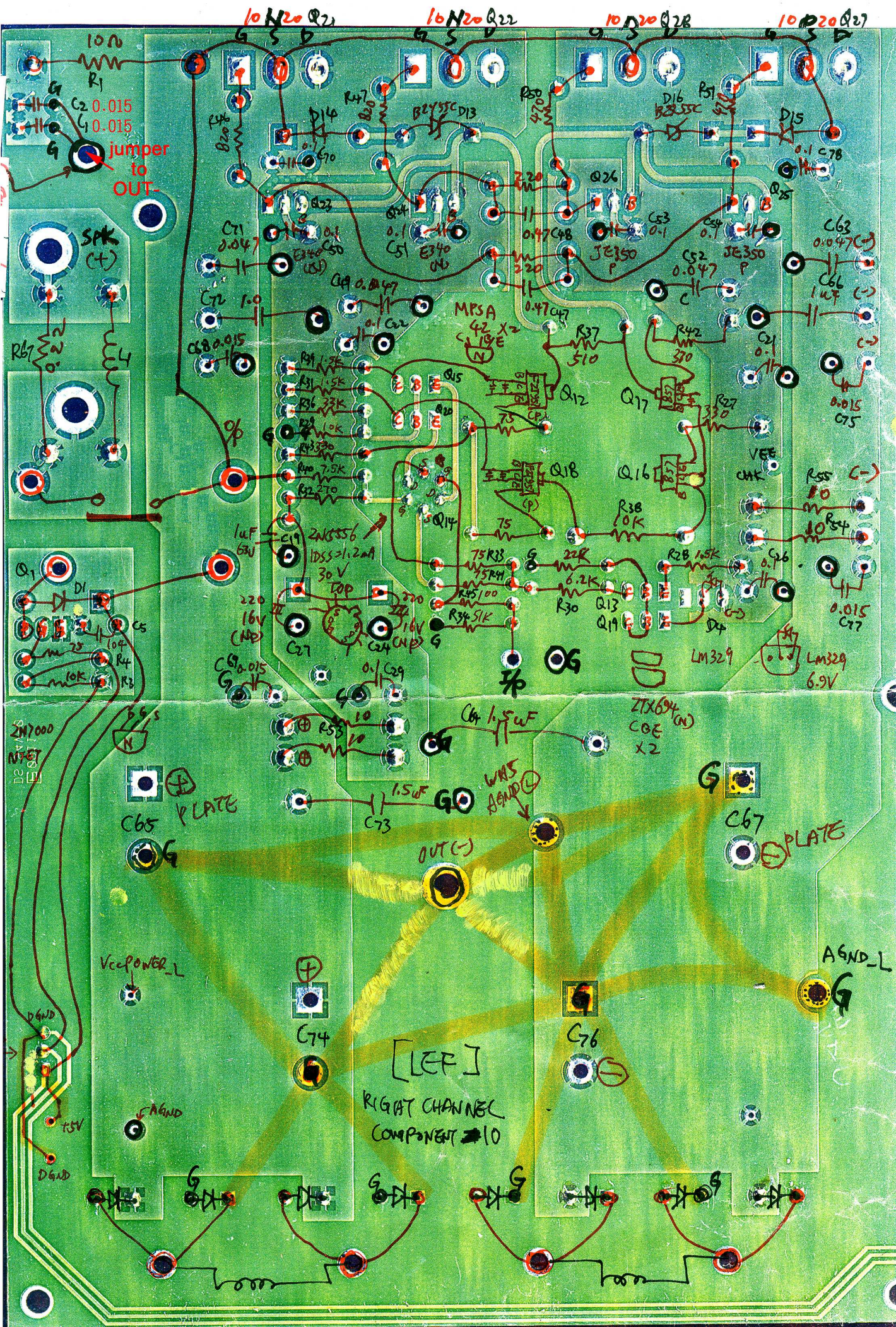


LEFT CRIGHT CHANAEL COMPONENT (10)



10N $\bar{N}20$ Q21
16N $\bar{N}20$ Q22
10 $\bar{N}20$ Q28
10 $\bar{N}20$ Q27

R1 10N
C2 0.015
L1 0.015
jumper to OUT

S PK (+)

Rb7 10N
L4

Q1
D1
C5
R3
R4
R2

2M7000
DP 5V
N

C65 (+) PLATE
C67 (-) PLATE

[LEF]
RIGHT CHANNEL COMPONENT 10

WAS BANGED

VccPOWER_L
D_GND
75V
A_GND

ZTX694
COE (N)
X2

VEE CHT

LM329 6.9V

AGND_L