

**\*\* ELECTRICAL PERFORMANCE SPECIFICATION \*\***

Manufacturer : Ngai Lik BAND: AM  
 Model Number : CD100 (IC TA2111P)  
 Description : AM/FM STEREO RADIO CASSETTE RECORDER & CD PLAYER  
 customer's Name : GOODMANS  
 Test Conditions  
 1. Supply Voltage : AC 230V DC 12V  
 2 Reference Output : 50 mW  
 3. Load Impedance : 8 Ohm  
 4. Modulation = 1000Hz 30% • 1 • • 5 •

NO	ITEMS	UNIT	NOMINAL	LIMIT	
1	Frequency Range	LOW END	KHz	520	±10
		HIGH END	KHz	1640	±30
2	Maximum Sensitivity	600 KHz	dB	76	80
		1000 KHz	dB	76	80
		1400 KHz	dB	76	80
3	Useable Sensitivity 20dB S/N	600 KHz	dB	84	90
		1000 KHz	dB	84	90
		1400 KHz	dB	84	90
4	Dial Calibration Error (Pointer at Centre of Silk-Screening Scale)	ALL BAND	KHz	±10	±20
5	Signal to Noise Ratio (100dB)	1000 KHz	dB	35	30
6	IF Frequency	600 KHz	KHz	455	±5
7	IF Rejection	600 KHz	dB	50	40
8	Image Rejection	1400 KHz	dB	40	30
9	Adjacent Channel Attenuation ±10KHz	1000 KHz	dB	20	15
10	Bandwidth - 6dB	1000 KHz	KHz	5	10
11	AGC Figure of Merit (126 dB)	1000 KHz	dB	40	30
12	Whistle Modulation (TWEET) (86 dB)	910 KHz	dB	15	10
13	Audio Frequency -6dB (100 dB)	1000 KHz	Hz	100/3k	150/2k5
14	Distortion (100 dB)	1000 KHz	%	2	4
15	10% THD Output Power (100 dB)	1000 KHz	mW	>1500	/
16	Overload Distortion (126 dB)	1000 KHz	%	4	6
17	26% Maximum Output Power (100 dB)	1000 KHz	mW	>1600	/

•• \_\_\_\_\_ •• \_\_\_\_\_ •• \_\_\_\_\_ ••

**\*\* ELECTRICAL PERFORMANCE SPECIFICATION \*\***

Manufacturer : Ngai Lik BAND:FM  
 Model Number : CD100 (IC TA2111P)  
 Description : AM/FM STEREO RADIO CASSETTE RECORDER & CD PLAYER  
 customer's Name : GOODMANS  
 Test Conditions  
 1. Supply Voltage : AC 230V DC 12V  
 2. Reference Output : 50 mW  
 3. Load Impedance : 8 Ohm  
 4. Modulation=1000Hz Deviation=22.5KHz(mono)75.0KHz (ST) • 2 • 5 •

NO	ITEMS		UNIT	NOMINAL	LIMIT
1	Frequency Range	LOW END	MHz	87.5	±0.5
		HIGH END	MHz	108.2	±0.5
2	Maximum Sensitivity	90 MHz	dB	12	16
		98 MHz		12	16
		106 MHz		12	16
3	Useable Sensitivity 30dB S/N	90 MHz	dB	16	26
		98 MHz		16	26
		106 MHz		16	26
4	Dial Calibration Error (Pointer at Centre of Silk Screening Scale)	ALL BAND	MHz	Justified:±0.5	Midst:±1
5	Stereo Led Lighting Sensitivity	98 MHz	dB	18	25
6	Channel Separation	98 MHz	dB	25	22
7	Signal to Noise Ratio (60 dB)	98 MHz	dB	50	40
8	IF Frequency	90 MHz	MHz	10.7	±0.1
9	IF Rejection	90 MHz	dB	60	50
10	Image Rejection	106 MHz	dB	30	20
11	Limiting Sensitivity -3dB	90 MHz	MHz	20	30
12	AFC Holding Range (60 dB)	98 MHz	KHz	550	300
13	AM Suppression (60 dB)	98 MHz	dB	40	30
15	Frequency Response -6dB	98 MHz	Hz	100/5k	150/4k5
16	Distortion (60 dB)	98 MHz	%	1	3
17	10% THD Output Power (60 dB)	98 MHz	mW	>1500	/
18	26% Maximum Output Power (60 dB)	98 MHz	mW	>1600	/
19	Overload Distortion (100 dB)	98 MHz	%	3	6

•• \_\_\_\_\_ •• \_\_\_\_\_ •• \_\_\_\_\_ ••

NL-DES-01F9/REV.1/10.01.99

••• \_\_\_\_\_ •••

Manufacturer : Ngai Lik  
 Model Number : CD100 ( IC TA2111P)  
 Description : AM/FM STEREO RADIO CASSETTE RECORDER & CD PLAYER  
 customer's Name : GOODMANS  
 Test Conditions  
 1. Supply Voltage : AC 230V DC 12V  
 2. Reference Output : 50 mW  
 3. Load Impedance : 8 Ohm

TAPE PLAYBACK

• 3 • • 5 •

NO	ITEMS		UNIT	NOMINAL	LIMIT
1	Tape Speed	NORMAL	Hz	3000	+3%/-2%
2	Wow & Flutter	WTD	%	0.2	0.35
		WOW		0.2	0.3
		FLUTTER		0.3	0.6
3	Playback Frequency Response	125 KHz	dB	±3	±6
		1 KHz		0	0
		6.3 KHz		±3	±6
4	Signal to Noise Ratio	TCC-194	dB	40	30
5	Channel Separation	TCC-192	dB	30	24
6	Track Crosstalk	MTT-121N	dB	40	30
7	Channel Balance	MTT-112B	dB	0	3
8	Minimum Volume Hum		mV	5	10
9	Maximum Volume Hum		mV	30	100
10	Maximum Volume Distortion	MTT-112B	%	20	25
11	Distortion	MTT-118N	%	1	3
12	10% THD Output Power	MTT-112B	mW	>1500	/
13	26% Maximum Output Power	MTT-112B	mW	>1600	/

•• \_\_\_\_\_ •• \_\_\_\_\_ •• \_\_\_\_\_ ••

NL-DES-01F9/REV.1/10.01.99

••• \_\_\_\_\_ •••

Manufacturer : Ngai Lik  
 Model Number : CD100 (IC TA2111P) CD PLAYER  
 Description : AM/FM STEREO RADIO CASSETTE RECORDER & CD PLAYER  
 Customers Name : GOODMANS  
 Test Conditions  
 1. Supply : AC 230V DC 12V  
 2. Reference : 50 mw  
 3. Load : 8 Ohm • 4 • • 5 •

NO.	ITEMS		UNIT	NOMINAL	LIMIT	
1	TCD-725	Interruption:	mm	0.7	0.5	
		Black Dots:	mm	0.6	0.4	
		Fingerprints:	mm	•75	•65	
2	TCD-712 TCD-731	The 1st Song and The Last Song		OK	OK	
	3	TCD-784	Total Access Time of Toc	SEC.	3-4	5
Intervals Between Songs			SEC.	1-2	2	
Search Time From The Last Track to The 1ST Track			SEC.	6-7	10	
MAX. Distortion			1 KHz 0dB	%	<26	/
26% MAX.O/P				mW	>1600	/
10% THD O/P				mW	>1500	/
Nominal Distortion				%	2	3
Bass Boost ON(TONE ON)				dB	10	8
S/N Ratio 1KHz			L: R:	dB dB	50 50	45
Frequency Response			20 Hz	dB	-10	-16
			100 Hz	dB	±3	±5
			1 KHz	dB	0	0
			10 KHz	dB	±3	±5
			20 KHz	dB	-5	-10
Channel Balance		dB	2	3		
Channel Separation	1 KHz	dB	40	35		
	10 KHz	dB	38	35		
4	Transformer:	MAX. Hum/Noise	mV	15	30	
		Min. Hum/Noise	mV	2	4	

•• \_\_\_\_\_ •• \_\_\_\_\_ •• \_\_\_\_\_ ••

NL-DES-01F9/REV.1/10.01.99

••• \_\_\_\_\_ •••

**\*\* ELECTRICAL PERFORMANCE SPECIFICATION \*\***

Manufacturer : Ngai Lik

Model Number : CD100 (IC TA2111P)

CASSETTE RECORDING

Description : AM/FM STEREO RADIO CASSETTE RECORDER & CD PLAYER

Customers Name : GOODMANS

Test Conditions

1. Supply : AC 230V DC 12V

2. Reference : 50 mw

3. Load : 8 Ohm . 5 . . 5 .

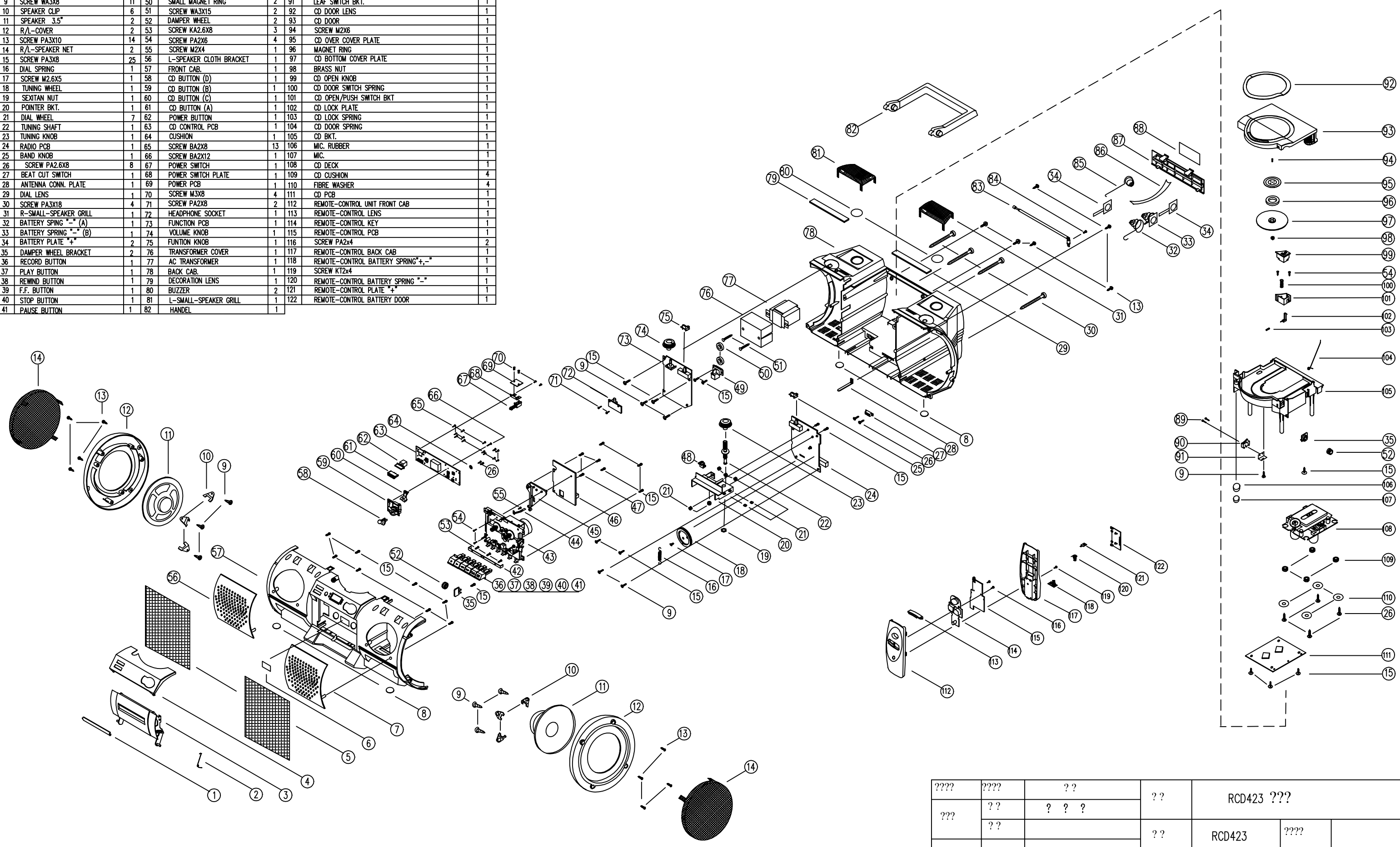
NO	MEASURING ITEMS	CONDITION	UNIT	NOMINAL	LIMIT
1	DISTORTION AT STANDARD O/P	MTT - 118N	%	3	5
2	R/P SEPARATION	MTT - 141N	dB	30	25
3	R/P S/N RATIO	MTT - 112BN	dB	40	35
4	R/P ERASE RATIO	MTT - 112BN	dB	35	30
5	ALC DIST REC	MTT - 112BN	%	5	8
6	Record/Playback Frequency Response CD-784	100 Hz	dB	±3	±6
		1 KHz	dB	0	0
		10 KHz	dB	-10	-15
7	R/R CH. BALANCE	MTT-112B	dB	1	3

•• \_\_\_\_\_ •• \_\_\_\_\_ •• \_\_\_\_\_ ••

NL-DES-01F9/REV.1/10.01.99

••• \_\_\_\_\_ •••

NO.	DESCRIPTION	SET	NO.	DESCRIPTION	SET	NO.	DESCRIPTION	SET
1	CASSETTE LENS	1	42	CASSETTE BUTTON PLATE	1	83	ANTENNA ROD	1
2	CASS. DOOR SPRING	1	43	CASS. DECK	1	84	SCREW M3X10	1
3	CASSETTE DOOR	1	44	RECORD PLATE	1	85	BATTERY CONNECTOR "+,-"	1
4	CD CONTROL LENS	1	45	RECORD BKT	1	86	NYLON BATTERY RIBBON	1
5	L/R SPEAKER CLOTH	2	46	RECORD PCB	1	87	BATTERY DOOR	1
6	LABEL	1	47	SCREW PA3X6	3	88	DIRECTION PLATE	1
7	R-SPEAKER CLOTH BRACKET	1	48	POINTER	1	89	SCREW M1.7X10	2
8	RUBBER FOOT	4	49	AC SOCKET	1	90	LEAF SWITCH	1
9	SCREW WA3X8	11	50	SMALL MAGNET RING	2	91	LEAF SWITCH BKT.	1
10	SPEAKER CLIP	6	51	SCREW WA3X15	2	92	CD DOOR LENS	1
11	SPEAKER 3.5"	2	52	DAMPER WHEEL	2	93	CD DOOR	1
12	R/L-COVER	2	53	SCREW KA2.6X8	3	94	SCREW M2X6	1
13	SCREW PA3X10	14	54	SCREW PA2X6	4	95	CD OVER COVER PLATE	1
14	R/L-SPEAKER NET	2	55	SCREW M2X4	1	96	MAGNET RING	1
15	SCREW PA3X8	25	56	L-SPEAKER CLOTH BRACKET	1	97	CD BOTTOM COVER PLATE	1
16	DIAL SPRING	1	57	FRONT CAB.	1	98	BRASS NUT	1
17	SCREW M2.6X5	1	58	CD BUTTON (D)	1	99	CD OPEN KNOB	1
18	TUNING WHEEL	1	59	CD BUTTON (B)	1	100	CD DOOR SWITCH SPRING	1
19	SEXTAN NUT	1	60	CD BUTTON (C)	1	101	CD OPEN/PUSH SWITCH BKT	1
20	POINTER BKT.	1	61	CD BUTTON (A)	1	102	CD LOCK PLATE	1
21	DIAL WHEEL	7	62	POWER BUTTON	1	103	CD LOCK SPRING	1
22	TUNING SHAFT	1	63	CD CONTROL PCB	1	104	CD DOOR SPRING	1
23	TUNING KNOB	1	64	CUSHION	1	105	CD BKT.	1
24	RADIO PCB	1	65	SCREW BA2X8	13	106	MIC. RUBBER	1
25	BAND KNOB	1	66	SCREW BA2X12	1	107	MIC.	1
26	SCREW PA2.6X8	8	67	POWER SWITCH	1	108	CD DECK	1
27	BEAT CUT SWITCH	1	68	POWER SWITCH PLATE	1	109	CD CUSHION	4
28	ANTENNA CONN. PLATE	1	69	POWER PCB	1	110	FIBRE WASHER	4
29	DIAL LENS	1	70	SCREW M3X8	4	111	CD PCB	1
30	SCREW PA3X18	4	71	SCREW PA2X8	2	112	REMOTE-CONTROL UNIT FRONT CAB	1
31	R-SMALL-SPEAKER GRILL	1	72	HEADPHONE SOCKET	1	113	REMOTE-CONTROL LENS	1
32	BATTERY SPRING "+ (A)	1	73	FUNCTION PCB	1	114	REMOTE-CONTROL KEY	1
33	BATTERY SPRING "- (B)	1	74	VOLUME KNOB	1	115	REMOTE-CONTROL PCB	1
34	BATTERY PLATE "+	2	75	FUNCTION KNOB	1	116	SCREW PA2x4	2
35	DAMPER WHEEL BRACKET	2	76	TRANSFORMER COVER	1	117	REMOTE-CONTROL BACK CAB	1
36	RECORD BUTTON	1	77	AC TRANSFORMER	1	118	REMOTE-CONTROL BATTERY SPRING "+,-"	1
37	PLAY BUTTON	1	78	BACK CAB.	1	119	SCREW K12x4	1
38	REWIND BUTTON	1	79	DECORATION LENS	1	120	REMOTE-CONTROL BATTERY SPRING "-"	1
39	F.F. BUTTON	1	80	BUZZER	2	121	REMOTE-CONTROL PLATE "+	1
40	STOP BUTTON	1	81	L-SMALL-SPEAKER GRILL	1	122	REMOTE-CONTROL BATTERY DOOR	1
41	PAUSE BUTTON	1	82	HANDEL	1			



???	???	??	??	RCD423 ???	
???	??	???	??	RCD423	???
???	??		???	JUN26,00	???
?????????			???	RCD423.dwg	??
					1

MODEL	BAND	I_CODE	I_DESCRIPT	I_DESCRIPT1	QTY	LOCATION	VERSION
CD100RC	16T11(1469	002-09250-012	I.C. LA9250		1,000		0
CD100RC	16T11(1469	002-78602-014	I.C. LC78602		1,000		0
CD100RC	16T11(1469	003-00124-E35	TRANSISTOR DTC124ES		1,000		0
CD100RC	16T11(1469	003-00764-003	TRANSISTOR 2SB764		1,000	Q601	0
CD100RC	16T11(1469	003-01317-S01	TRANSISTOR 2SA1317S/T SANYO		1,000	Q101	0
CD100RC	16T11(1469	003-01346-001	TRANSISTOR 2SA1346 SANYO		2,000	Q301,302	0
CD100RC	16T11(1469	003-01936-T04	TRANSISTOR 2SD1936T/U/S SANYO		2,000	Q501,502	0
CD100RC	16T11(1469	005-C102B-013	RESISTOR 1 K 1/16W ?%		4,000	R124,134,138,126	0
CD100RC	16T11(1469	005-C103B-013	RESISTOR 10 K 1/16W ?%		7,000	R118,135,207,514,517,307,201	0
CD100RC	16T11(1469	005-C104B-013	RESISTOR 100 K 1/16W ?%		2,000	R305,110	0
CD100RC	16T11(1469	005-C122B-013	RESISTOR 1.2 K 1/16W ?%		2,000	R303,KEY PCBx1	0
CD100RC	16T11(1469	005-C152B-013	RESISTOR 1.5 K 1/16W ?%		1,000	R117	0
CD100RC	16T11(1469	005-C153B-013	RESISTOR 15 K 1/16W ?%		3,000	R108,113,131	0
CD100RC	16T11(1469	005-C154B-013	RESISTOR 150 K 1/16W ?%		1,000	R101	0
CD100RC	16T11(1469	005-C183B-013	RESISTOR 18 K 1/16W ?%		1,000	R132	0
CD100RC	16T11(1469	005-C220B-013	RESISTOR 22 OHM 1/16W ?%		1,000	R137	0
CD100RC	16T11(1469	005-C221B-013	RESISTOR 220 OHM 1/16W ?%		1,000	R304	0
CD100RC	16T11(1469	005-C222B-013	RESISTOR 2.2 K 1/16W ?%		5,000	R103,513,515,516,518	0
CD100RC	16T11(1469	005-C223B-013	RESISTOR 22 K 1/16W ?%		2,000	R112,1	0
CD100RC	16T11(1469	005-C224B-013	RESISTOR 220 K 1/16W ?%		2,000	R309,310	0
CD100RC	16T11(1469	005-C272B-013	RESISTOR 2.7 K 1/16W ?%		1,000	R208	0
CD100RC	16T11(1469	005-C273B-013	RESISTOR 27 K 1/16W ?%		1,000	R107	0
CD100RC	16T11(1469	005-C331B-013	RESISTOR 330 OHM 1/16W ?%		2,000	R106,133	0
CD100RC	16T11(1469	005-C333B-013	RESISTOR 33 K 1/16W ?%		2,000	R120,141	0
CD100RC	16T11(1469	005-C394B-013	RESISTOR 390 K 1/16W ?%		1,000	R140	0
CD100RC	16T11(1469	005-C472B-013	RESISTOR 4.7 K 1/16W ?%		2,000	R139,401	0
CD100RC	16T11(1469	005-C562B-013	RESISTOR 5.6 K 1/16W ?%		1,000	R125	0
CD100RC	16T11(1469	005-C563B-013	RESISTOR 56 K 1/16W ?%		4,000	R109,121,123,302	0
CD100RC	16T11(1469	005-C564B-013	RESISTOR 560 K 1/16W		1,000	R142	0
CD100RC	16T11(1469	005-C681B-013	RESISTOR 680 OHM 1/16W ?%		1,000	R301	0
CD100RC	16T11(1469	005-C682B-013	RESISTOR 6.8 K 1/16W ?%		1,000	R102	0
CD100RC	16T11(1469	005-C683B-013	RESISTOR 68 K 1/16W ?%		2,000	R116,111	0
CD100RC	16T11(1469	005-C822B-013	RESISTOR 8.2 K 1/16W ?%		1,000	R204	0
CD100RC	16T11(1469	005-C823B-013	RESISTOR 82 K 1/16W ?%		1,000	R2	0
CD100RC	16T11(1469	011-A1018-020	CERAMIC CAP. 100 PF 63V ?0/50%		2,000	C117,318	0
CD100RC	16T11(1469	011-A1028-020	CERAMIC CAP. 0.001 UF 63V ?0/50%		3,000	C133,509,512	0
CD100RC	16T11(1469	011-A1038-030	CERAMIC CAP. 0.01 UF 63V ?0/50%		4,000	C137,152,307,127	0
CD100RC	16T11(1469	011-A1048-010	CERAMIC CAP. 0.1 UF 63V ?0/50%		2,000	C140,144	0
CD100RC	16T11(1469	011-A1508-020	CERAMIC CAP. 15 PF 63V ?0/50%		1,000	C124	0
CD100RC	16T11(1469	011-A2238-030	CERAMIC CAP. 0.022 UF 63V ?0/50%		4,000	C303,309,316,606	0
CD100RC	16T11(1469	011-A3318-020	CERAMIC CAP. 330 PF 63V ?0/50%		1,000	C105	0
CD100RC	16T11(1469	011-A3328-030	CERAMIC CAP. 0.0033 UF 63V ?0/50%		3,000	C108,116,121	0
CD100RC	16T11(1469	011-A6818-030	CERAMIC CAP. 680 PF 63V ?0/20%		1,000	C313	0
CD100RC	16T11(1469	012-A1047-006	ELECT. CAP. 0.1 MFD 50V ?0% (5x11)		2,000	C107,401	0
CD100RC	16T11(1469	012-A1057-006	ELECT. CAP. 1 MPD 50V ?0% (5x11)		1,000	C204	0
CD100RC	16T11(1469	012-A1067-003	ELECT. CAP. 10 MFD 16V ?0% (5x11)		2,000	C126,138	0
CD100RC	16T11(1469	012-A1077-001	ELECT. CAP. 100 MFD 6.3V ?0%		6,000	C128,129,304,308,120,139	0
CD100RC	16T11(1469	012-A1087-002	ELECT. CAP. 1000 MFD 10V ?0% (8x16)		2,000	C202,603	0
CD100RC	16T11(1469	012-A2247-006	ELECT. CAP. 0.22 MFD 50V ?0% (5x11)		1,000	C118	0
CD100RC	16T11(1469	012-A2257-006	ELECT. CAP. 2.2 MFD 50V ?0% (5x11)		2,000	C143,402	0
CD100RC	16T11(1469	012-A2277-002	ELECT. CAP. 220 MFD 10V ?0% (6x12)		1,000	C135	0
CD100RC	16T11(1469	012-A3347-006	ELECT. CAP. 0.33 MFD 50V ?0% (5x11)		1,000	C132	0

CD100RC	16T11(1469)	012-A3357-002	ELECT. CAP. 3.3 MFD ?0% 10V		2,000	C510,507	0
CD100RC	16T11(1469)	012-A3377-002	ELECT. CAP. 330 MFD 10V ?0%		1,000	C602	0
CD100RC	16T11(1469)	012-A4747-006	ELECT. CAP. 0.47 MFD 50V ?0% (5x11)		1,000	C119	0
CD100RC	16T11(1469)	012-A4767-002	ELECT. CAP. 47 MFD 10V ?0% (5x11)		1,000	C134	0
CD100RC	16T11(1469)	012-A4778-002	ELECT. CAP. 470 MFD (?0%) 10V		1,000	C305	0
CD100RC	16T11(1469)	013-A1046-000	MYLAR CAP. 0.1 UF		5,000	C101,109,113,301,302	0
CD100RC	16T11(1469)	013-A1536-000	MYLAR CAP. 0.015 UF		1,000	C114	0
CD100RC	16T11(1469)	013-A1836-000	MYLAR CAP. 0.018 UF		1,000	C115	0
CD100RC	16T11(1469)	013-A2226-000	MYLAR CAP. 0.0022 UF		1,000	C123	0
CD100RC	16T11(1469)	013-A3326-000	MYLAR CAP. 0.0033 UF		1,000		0
CD100RC	16T11(1469)	013-A3336-000	MYLAR CAP. 0.033 UF		2,000	C104,125,	0
CD100RC	16T11(1469)	013-A4736-000	MYLAR CAP. 0.047 UF		2,000	C106,131	0
CD100RC	16T11(1469)	013-A6826-000	MYLAR CAP. 0.0068 UF		1,000	C130	0
CD100RC	16T11(1469)	021-005	DIODE IN4148		4,000	D301,302,401,402	0
CD100RC	16T11(1469)	024-16.93MHz	RESONATOR CERAMIC 16.93MHz 3PIN		1,000	X301	0
CD100RC	16T11(1469)	036-02S-P2	Connector 2 Pin Socket (Pitch=2mm)		1,000	CN22	0
CD100RC	16T11(1469)	036-06S-P2	Connector 6 Pin Socket (Pitch=2mm)		3,000	CN13,21,15	0
CD100RC	16T11(1469)	036-08S-P2	Connector 8 Pin Socket (Pitch=2mm)		1,000	CN17	0
CD100RC	16T11(1469)	036-15SN-P1.5	Connector 15 Pin Socket (Pitch=1.5mm)		1,000		0
CD100RC	16T11(1469)	002-01469-A00	I.C. MM1469AH		1,000	U201	0
CD100RC	16T11(1469)	001-0CD46-0HH	P.C.B CD46 SANYO MAIN 16T11 MM1469 REV-3	BOARD	1,000		0
CD100RC	AF-S	001-CD100-003	P.C.B CD100 AM/FM "ST" BOARD REV-0		1,000		1
CD100RC	AF-S	002-02111-N24	I.C. TA2111N (3V AM/FM CHIP TUNER IC)		1,000	IC1	1
CD100RC	AF-S	003-51355	Ferrite Bar 5x13x55mm		1,000		1
CD100RC	AF-S	004-101083A	I.F.T. 10MM 1083A.(RED)		1,000	T1	1
CD100RC	AF-S	004-101083B	I.F.T. 10MM 1083B (Yellow)		1,000	T2	1
CD100RC	AF-S	004-10151R	I.F.T. 10MM 151R (GREEN)		1,000	T3	1
CD100RC	AF-S	005-C101B-043	RESISTOR 100 OHM 1/2W ?%		1,000	R6	1
CD100RC	AF-S	005-C154B-023	RESISTOR 150 K 1/4W ?%		1,000	R2	1
CD100RC	AF-S	005-C220B-023	RESISTOR 22 OHM 1/4W ?%		1,000	R125	1
CD100RC	AF-S	005-C272B-023	RESISTOR 2.7 K 1/4W ?%		1,000	R4	1
CD100RC	AF-S	005-C331B-023	RESISTOR 330 OHM 1/4W ?%		1,000	R1	1
CD100RC	AF-S	005-C332B-023	RESISTOR 3.3 K 1/4W ?%		1,000	R8	1
CD100RC	AF-S	005-C561B-023	RESISTOR 560 OHM 1/4W ?%		1,000	R3	1
CD100RC	AF-S	005-C564B-023	RESISTOR 560 K 1/4W ?%		1,000	2R2	1
CD100RC	AF-S	005-C683B-023	RESISTOR 68 K 1/4W ?%		3,000	R5,7,58	1
CD100RC	AF-S	011-A0508-020	CERAMIC CAP. 5 PF 63V ?0/50%		1,000	C21	1
CD100RC	AF-S	011-A1028-020	CERAMIC CAP. 0.001 UF 63V ?0/50%		1,000	C19	1
CD100RC	AF-S	011-A1048-010	CERAMIC CAP. 0.1 UF 63V ?0/50%		1,000	C25	1
CD100RC	AF-S	011-A1318-020	CERAMIC CAP. 130 PF 63V ?0/50%		1,000	C24	1
CD100RC	AF-S	011-A2508-020	CERAMIC CAP. 25 PF 63V ?0/50%		2,000	C22,23	1
CD100RC	AF-S	011-A3008-020	CERAMIC CAP. 30 PF 50V ?0/50%		4,000	C2,3,4,8	1
CD100RC	AF-S	011-A6828-030	CERAMIC CAP. 0.0068 UF 63V ?0/20%		2,000	C9,10	1
CD100RC	AF-S	012-05-02	BAR HOLDER 5MM (5X12.5)		2,000		1
CD100RC	AF-S	012-A1047-006	ELECT. CAP. 0.1 MFD 50V ?0% (5x11)		2,000	C16,18	1
CD100RC	AF-S	012-A1057-006	ELECT. CAP. 1 MPD 50V ?0% (5x11)		1,000	C17	1
CD100RC	AF-S	012-A2247-006	ELECT. CAP. 0.22 MFD 50V ?0% (5x11)		1,000	C20	1
CD100RC	AF-S	012-A2277-002	ELECT. CAP. 220 MFD 10V ?0% (6x12)		1,000	C11	1
CD100RC	AF-S	012-A3357-006	ELECT. CAP. 3.3 MFD 50V ?0% (5x11)		2,000	C12,13	1
CD100RC	AF-S	012-A3367-003	ELECT. CAP. 33 MFD 16V ?0% (5x11)		1,000	C7	1
CD100RC	AF-S	012-A4747-006	ELECT. CAP. 0.47 MFD 50V ?0% (5x11)		1,000	C5	1
CD100RC	AF-S	012-A4757-006	ELECT. CAP. 4.7 MFD 50V ?0% (5x11)		1,000	C6	1
CD100RC	AF-S	012-A4767-003	ELECT. CAP. 47 MFD 16V ?0% (5x11)		1,000	C26	1



CD100RC	AF-S	013-A1236-000	MYLAR CAP. 0.012 UF		2,000	C14,15	1
CD100RC	AF-S	023-00231-003	P.V.C. AM/FM 443DF2B "HE"		1,000		1
CD100RC	AF-S	023-455B	CERAMIC FILTER SRU455B		1,000	Y1	1
CD100RC	AF-S	029-0533	BAND SWITCH SK63D02RG12		1,000		1
CD100RC	AF-S	033-125-20	AM COIL 125:20		1,000		1
CD100RC	AF-S	035-4525-01	FM Coil 4.5mm x 2 1/2T		1,000		1
CD100RC	AF-S	035-4535-01	FM Coil 4.5mm x 3 1/2T		1,000		1
CD100RC	AF-S	035-4545-01	FM Coil 4.5mm x 4 1/2T		1,000		1
CD100RC	AF-S	036-06S-P2	Connector 6 Pin Socket (Pitch=2mm)		1,000	CN1	1
CD100RC	AF-S	081-KM 264	Screw K2.6x4M		2,000		1
CD100RC	AF-S	023-010	CERAMIC FILTER LT10.7MA5C (ORANGE)		1,000		1
CD100RC	B230-S(CEL	004-3-003	CHOCK COIL 3T		3,000		1
CD100RC	B230-S(CEL	009-15-160SW	PIN CONNECTOR 15 PIN x 160MM (SILVER WIR E)		1,000		1
CD100RC	B230-S(CEL	011-A1028-020	CERAMIC CAP. 0.001 UF 63V ?0/50%		5,000		1
CD100RC	B230-S(CEL	028-AC MKJ-102	AC SOCKET VDE APP'D MKJ-102		1,000		1
CD100RC	B230-S(CEL	029-038	BAND SWITCH MICO SWITCH LS-323		1,000		1
CD100RC	B230-S(CEL	029-0803	BAND SWITCH SS-22F32-G10 (B)		1,000		1
CD100RC	B230-S(CEL	031-CD56-01N	TUNING SHAFT CD56 NEW		1,000		1
CD100RC	B230-S(CEL	032-0CD46-02	BRASS NUT CD46 (NEW)		1,000		1
CD100RC	B230-S(CEL	036-0036-06W3-P2	6 Pin Wire 150mm (5x0.8) Pitch=2mm (Hx2)	CD36	1,000		1
CD100RC	B230-S(CEL	036-0036-08W1-P2	8 Pin Wire 200mmx8 (5x0.8) (Hx2) P=2MM	CD36	1,000		1
CD100RC	B230-S(CEL	036-0038-04W1-P2	4 Pin Wire 270mm (5x0.8mm) J,Wx4 Pitch=2	mm CD38	1,000		1
CD100RC	B230-S(CEL	036-0CD46-06W1-P2	6 PIN WIRE 360MM (5x0.8) PITCH=2MM (HX2)	CD46	1,000		1
CD100RC	B230-S(CEL	036-0CD46-06W2-P2	6 PIN WIRE 350MMx6 (5x0.8) PITCH=2MM (Hx	2) CD46	3,000		1
CD100RC	B230-S(CEL	036-0CD46-08W1-P2	8 PIN WIRE 350MMx8 (5x0.8) P=2MM (Hx2)	CD46N	1,000		1
CD100RC	B230-S(CEL	036-8383-03W	3 Pin Wire 250mm (9x1.3mm) Hx1 NL8383		1,000		1
CD100RC	B230-S(CEL	036-8988-03W1	3 Pin Wire 350mm (15x0.19mm) AG8988		1,000		1
CD100RC	B230-S(CEL	036-CD48-02W-P2	2 PIN WIRE 230MMx2 (8x1.2) Pitch=2MM	CD48	2,000		1
CD100RC	B230-S(CEL	036-CT749-02AW	2 Pin Wire 150MM (Shield Wire) (Hx1) CT7	49	1,000		1
CD100RC	B230-S(CEL	036-SL365-05AW1-P2	5 PIN HOUSING ASSY P=2MM 200MM (Shield Wire) SL365		1,000		1
CD100RC	B230-S(CEL	040-CD100	ANTENNA ROD CD100 ?x752mm		1,000		1
CD100RC	B230-S(CEL	056-D105S	CD DECK DA11 (SANYO)		1,000		1
CD100RC	B230-S(CEL	056-D11S-6PA	CASS. DECK CD100 - STEREO W/6PA ERASE HE	AD	1,000		1
CD100RC	B230-S(CEL	057-SP270-20B	Buzzer Plate 27mm With 2 Terinals & Blac	k Cap	2,000		1
CD100RC	B230-S(CEL	058-1002N	BS APPROVAL 3AMP 1690 PLUG (BLACK)		1,000		1
CD100RC	B230-S(CEL	058-T46N	BS6500 APP CORD WITH H03VVH2-F2x0.75MM	(NEW)	1,000		1
CD100RC	B230-S(CEL	060-001	Condenser Mic -60?Db		1,000		1
CD100RC	B230-S(CEL	061-30	MAGNET RING (4 POLES) 16.0x30.0x5.0mm		1,000		1
CD100RC	B230-S(CEL	061-70	MAGNET RING ?8x10x6mm (F101860D)		2,000		1
CD100RC	B230-S(CEL	065-05	Dial Cord 0.5mm 500mtr/spool		0,500		1
CD100RC	B230-S(CEL	069-04	Cable Tie 4"		6,000		1
CD100RC	B230-S(CEL	069-10	NO.24 Wire-Band (Black) 4"		3,000		1
CD100RC	B230-S(CEL	070-01	Nylon Battery Ribbon 3/8"(HK\$6.4/Per ROL	65.8 Metres (= 72 Yards) /Per Roll	0,300		1
CD100RC	B230-S(CEL	073-025-25-02	Rubber 25x25x2mm		1,000		1
CD100RC	B230-S(CEL	073-0CDTL-SONY-3	CD CUSHION FOR TOP LOADING SONY (RED)	SW-02-A658 HARDNESS=30	2,000		1
CD100RC	B230-S(CEL	073-0CDTL-SONY-4	CD CUSHION FOR TOP LOADING SONY (GREEN)	SW-02-B658 HARDNESS=40	2,000		1
CD100RC	B230-S(CEL	073-CD160-02N	RUBBER FOOT (B) ?6x3MM CD160-1-302		4,000		1
CD100RC	B230-S(CEL	073-KB329-06	RUBBER MIC CAP (460-00060) YF-COVER-?2.	1	1,000		1
CD100RC	B230-S(CEL	074-02-001	Dial Spring 3x8mm		1,000		1
CD100RC	B230-S(CEL	074-03-001N	Speaker Clip New 110		6,000		1
CD100RC	B230-S(CEL	074-10-08	E RING M6 ?2x6x0.8mm		1,000		1
CD100RC	B230-S(CEL	074-12-CDTLC-1	CD36 Washer ?9x38x0.65mm SANYO CD Top	Loading	1,000		1
CD100RC	B230-S(CEL	075-50-10-005	FELT TAPE 50x10x0.5mm		1,000		1

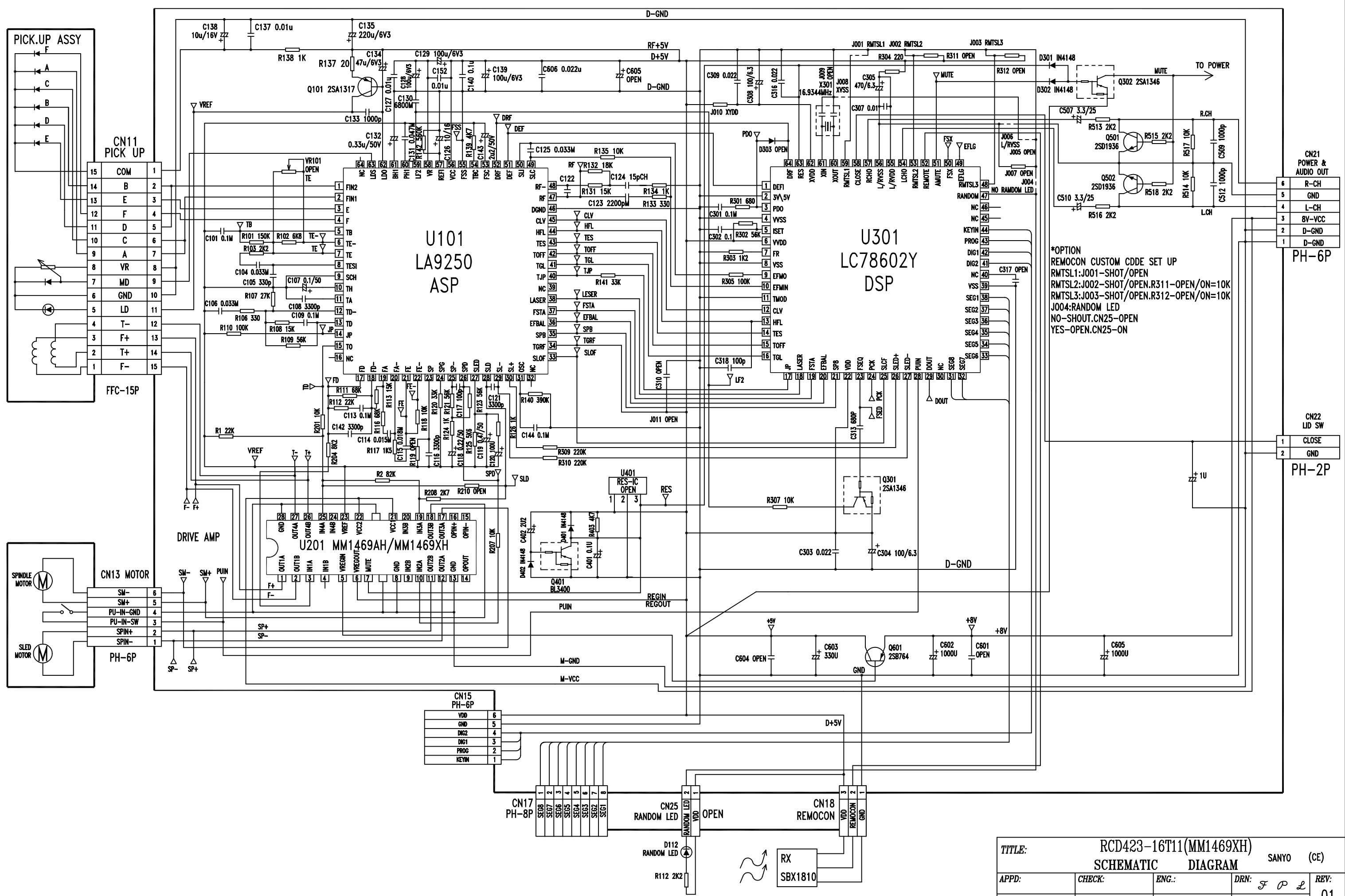
CD100RC	B230-S(CEL	077-06	Fibre Washer ?x14x1.2mm		4,000		1
CD100RC	B230-S(CEL	078-0031-16	CD Door Switch Spirng CD-31		1,000		1
CD100RC	B230-S(CEL	078-0036-05	BATTERY TERMINAL PLATE CD-36		2,000		1
CD100RC	B230-S(CEL	078-0036-07N	BATTERY SPRING (NEW) "D" CD-36		1,000		1
CD100RC	B230-S(CEL	078-0036-19	Record plate CD-36		1,000		1
CD100RC	B230-S(CEL	078-0CD46-04A	CHUCK HOLD PLATE CD46-1-216 W/O SCREW	(SAMSUNG)	1,000		1
CD100RC	B230-S(CEL	078-0CD46-06N	BATTERY CONNECTOR "+.-" CD46 "NEW"		1,000		1
CD100RC	B230-S(CEL	078-0CD46-07	BATTERY SPRING "- " CD46		1,000		1
CD100RC	B230-S(CEL	078-8686-08	SPK CLOTH CD8686 183#D (BLUE)		0,036		1
CD100RC	B230-S(CEL	078-CD100-01B	SPEAKER GRILL CD100 (SIDE) ?.0MM (BLACK )		2,000		1
CD100RC	B230-S(CEL	078-CD100-01LSB	SPEAKER GRILL CD100 "L" SMALL ?.0MM (BL ACK)		1,000		1
CD100RC	B230-S(CEL	078-CD100-01RSB	SPEAKER GRILL CD100 "R" SMALL ?.0MM (BL ACK)		1,000		1
CD100RC	B230-S(CEL	078-CD100-02	VOLUME SHAFT SPRING CD100-209		1,000		1
CD100RC	B230-S(CEL	078-CD100-03	CASSETTE DOOR SPRING CD100-201		1,000		1
CD100RC	B230-S(CEL	078-CD100-04	POWER SW PLATE CD100-208		1,000		1
CD100RC	B230-S(CEL	078-CD100-05	CASSETTE KNOB PLATE CD100-202		1,000		1
CD100RC	B230-S(CEL	078-CD100-06	TRANSFORMER COVER CD100-210		1,000		1
CD100RC	B230-S(CEL	078-CD56-03	CD DOOR SPRING CD56		1,000		1
CD100RC	B230-S(CEL	078-CD68-03	ANTENNA CONN PLATE CD68-1-201		1,000		1
CD100RC	B230-S(CEL	078-CD78-05	SPRING COMP SLIDE EJECT CD78		1,000		1
CD100RC	B230-S(CEL	078-PR99-02	Battery Spring "- " PR99/100		1,000		1
CD100RC	B230-S(CEL	078-PR99-03	Battery Plate "+" PR99/100		1,000		1
CD100RC	B230-S(CEL	078-PR99-05	Battery Contalt "+,-" PR99/100		1,000		1
CD100RC	B230-S(CEL	081-BA 210	Screw B2x10A		1,000		1
CD100RC	B230-S(CEL	081-BA 28	Screw B2x8A		10,000	8/CD CTRL BOARD 6/CD CTRL KBON(A),(B)	1
CD100RC	B230-S(CEL	081-CM 27TAPTITE	Screw C2x7M (Taptite)		2,000		1
CD100RC	B230-S(CEL	081-KT 174B	Screw K1.7x4T (Black)		1,000		1
CD100RC	B230-S(CEL	081-PA 212	Screw P2x12A		2,000		1
CD100RC	B230-S(CEL	081-PA 236	Screw P2.3x6A		2,000		1
CD100RC	B230-S(CEL	081-PA 23TAPTITE	Screw P2x3A (Taptite)		1,000	1/REC PLATE	1
CD100RC	B230-S(CEL	081-PA 24	Screw P2x4A		2,000		1
CD100RC	B230-S(CEL	081-PA 26	Screw P2x6A		9,000	2/REC BRACKET-DECK 2/CD BRACKET-CD LOCK	1
CD100RC	B230-S(CEL	081-PA 266	Screw P2.6x6A		2,000		1
CD100RC	B230-S(CEL	081-PA 268	Screw P2.6x8A		2,000	2/CD CTRL KNOB (D) 2/BACK SWITCH 4/CD DECK-CD BRACKET	1
CD100RC	B230-S(CEL	081-PA 28	Screw P2x8A		2,000		1
CD100RC	B230-S(CEL	081-PA 310	Screw P3x10A		14,000	4/FRONT CAB-BACK CAB	1
CD100RC	B230-S(CEL	081-PA 312	Screw P3x12A		18,000		1
CD100RC	B230-S(CEL	081-PA 318	Screw P3x18A		4,000		1
CD100RC	B230-S(CEL	081-PA 36	Screw P3x6A		3,000	3/REC BOARD-REC BRACKET	1
CD100RC	B230-S(CEL	081-PA 38	Screw P3x8A		11,000		1
CD100RC	B230-S(CEL	081-PM 25	Screw P2x5M		1,000		1
CD100RC	B230-S(CEL	081-PM 26	Screw P2x6M		2,000	1/CD COVER PLATE 2/CD DECK	1
CD100RC	B230-S(CEL	081-PM 265	Screw P2.6x5M		1,000	1/PVC WHEEL	1
CD100RC	B230-S(CEL	081-PM 310	Screw P3x10Mx0.5		1,000	1/PM ANT-BACK CAB	1
CD100RC	B230-S(CEL	081-PM 36	Screw P3x6Mx0.5		4,000		1
CD100RC	B230-S(CEL	081-WA 210	Screw W2x10A		4,000		1
CD100RC	B230-S(CEL	081-WA 268	Screw 2.6x8 (WA)		2,000		1
CD100RC	B230-S(CEL	081-WA 310	Screw W3x10A		1,000		1
CD100RC	B230-S(CEL	081-WA 316	Screw 3x16 (WA)		2,000	2/AC TRANS-BACK CAB	1
CD100RC	B230-S(CEL	081-WA 38	Screw 3x8 (WA)		12,000	6/SPEAKER CLIP 2/RAIDO PCB-BACK CAB 2/POWER PCB-BACK CAB	1
CD100RC	B230-S(CEL	083-100Y	Jumper Wire (9x1.3) 100mm Yellow		1,000		1
CD100RC	B230-S(CEL	083-150Y	Jumper Wire (9x1.3) 150mm Yellow		1,000		1
CD100RC	B230-S(CEL	083-200B	Jumper Wire (9x1.3) 200mm Blue		1,000		1

CD100RC	B230-S(CEL)	083-200BK	Jumper Wire (9x1.3) 200mm Black		2,000		1
CD100RC	B230-S(CEL)	083-200G	Jumper Wire (9x1.3) 200mm Green		1,000		1
CD100RC	B230-S(CEL)	083-300	Jumper Wire (9x1.3) 300mm		1,000		1
CD100RC	B230-S(CEL)	083-300G	Jumper Wire (9x1.3) 300mm (Green)		2,000		1
CD100RC	B230-S(CEL)	083-350	Jumper Wire (9x1.3) 350mm		1,000		1
CD100RC	B230-S(CEL)	083-350B	Jumper Wire (9x1.3) 350mm Blue.		1,000		1
CD100RC	B230-S(CEL)	083-350R	Jumper Wire (9x1.3) 350mm Red		2,000		1
CD100RC	B230-S(CEL)	083-40	Jumper Wire (9x1.3) 40mm		1,000		1
CD100RC	B230-S(CEL)	083-400	Jumper Wire (9x1.3) 400mm		1,000		1
CD100RC	B230-S(CEL)	084-300	Shield Wire 300mm (Single)		1,000		1
CD100RC	B230-S(CEL)	084-500	Shield Wire 500mm (Single)		1,000		1
CD100RC	B230-S(CEL)	088-250	Jumper Wire (17x0.19) 250mm		1,000		1
CD100RC	B230-S(CEL)	057-SI321-32-8CF-3W	Speaker 3 1/2" 32mm (8 OHM) 3W WITH FOAM	EDGE WITH SILVER	2,000		1
CD100RC	B230-S(CEL)	058-T8108VA	AC Transformer EI-48 (16x23.5mm) 230V 50	Hz 12V CE APP W/FUSE 125• SHIELD COVER	1,000		1
CD100RC	B230-S(CEL)	081-WA 28	Screw W2x8A		4,000		1
CD100RC	B230-S(CEL)	073-CD100-01	RUBBER KEYS (4 KEYS) CD100 "STOP/PLAY/DO	WN/UP"	1,000		1
CD100RC	B230-S(CEL)	081-KA 268-4	Screw k2.6x8A D=4MM		3,000		1
CD100RC	B230-S(CEL)	005-F010B-023	FUSIBLE METAL FILM RESISTOR 1 OHM 1/4W		1,000		1
CD100RC	B230-S(CEL)	036-CD100-03AW1-P2	3 PIN WIRE 350MMx3 (SHIELD WIRE) P=2MM C	D100	1,000		1
CD100RC	KEY	001-CD100-0HB	P.C.B CD100 KEY+JACK+SW <6> "SANYO" BOAR	D REV-0	1,000		1
CD100RC	KEY	002-09149-059	I.C. TD9149 (REMOTE CTRL DECODER)		1,000		1
CD100RC	KEY	003-01317-S01	TRANSISTOR 2SA1317S/T SANYO		2,000	Q22,23	1
CD100RC	KEY	003-09014-C10	TRANSISTOR 9014C CS		1,000	Q15	1
CD100RC	KEY	004-3-150	CHOCK COIL 15uH?0% RC0308T-150K (V-TAPE )		1,000	L901	1
CD100RC	KEY	005-C101B-023	RESISTOR 100 OHM 1/4W ?%		1,000	R95	1
CD100RC	KEY	005-C103B-023	RESISTOR 10 K 1/4W ?%		1,000	R94	1
CD100RC	KEY	005-C151B-023	RESISTOR 150 OHM 1/4W ?%		8,000	R110,111,112,113,114,116,117,150	1
CD100RC	KEY	005-C392B-013	RESISTOR 3.9 K 1/16W ?%		2,000	R108,109	1
CD100RC	KEY	005-C393B-023	RESISTOR 39 K 1/4W ?%		1,000	R96	1
CD100RC	KEY	005-C473B-023	RESISTOR 47 K 1/4W ?%		1,000	R93	1
CD100RC	KEY	005-C561B-023	RESISTOR 560 OHM 1/4W ?%		1,000	R107	1
CD100RC	KEY	005-C680B-023	RESISTOR 68 OHM 1/4W ?%		2,000	R36,37	1
CD100RC	KEY	006-CD36G	LED DISPLAY LY-DG562-09-Z3 (GREEN)		1,000		1
CD100RC	KEY	011-A1028-020	CERAMIC CAP. 0.001 UF 63V ?0/50%		2,000	C117,118	1
CD100RC	KEY	011-A2038-030	CERAMIC CAP. 0.02 UF 63V ?0/50%		1,000	C121	1
CD100RC	KEY	012-C1077-001	ELECT. CAP. MINI 100 MFD 6.3V ?0% (5x7)	-50'C/+105'C (M)	2,000	C119,122	1
CD100RC	KEY	012-C4767-002	ELECT. CAP. MINI 47 MFD 10V ?0% (5x7)	-50'C/+105'C	1,000	C120	1
CD100RC	KEY	021-005	DIODE IN4148		9,000	D11,12,13,14,15,16,17,18,19	1
CD100RC	KEY	021-20056	DIODE ZENER 5.6V 0.5w		1,000	ZD3	1
CD100RC	KEY	022-002G	Led Lamp 3MM (Green)		4,000	LED1,LED2,LED3,LED4,LED5	1
CD100RC	KEY	022-002R	Led Lamp 3MM (RED)		1,000		1
CD100RC	KEY	024-26043	INFRARED RECEIVER MODULE KSM-603TM2	IRM482V	1,000	IC903	1
CD100RC	KEY	029-0621	TACT SWITCH TS-00104 A (6X6X5mm)		6,000	K3,4,5,6,7,8	1
CD100RC	KEY	029-1133N	PUSH SWITCH PS-22F03-GBSL-360		1,000	SW401	1
CD100RC	KEY	030-1027	3.5MM STEREO 3 PIN+2X2JACK		1,000	JACK1	1
CD100RC	KEY	036-06SR-P2	Connector 6 Pin Socket (90 Degree)	(Pitch=2mm)	1,000	CN10	1
CD100RC	KEY	036-08SR-P2	Connector 8 Pin Socket (90 Degree)	(Pitch=2mm)	1,000	CN9	1
CD100RC	KEY	036-09SR-P2	Connector 9 Pin Socket (90 Degree)	(Pitch=2mm)	1,000	CN6	1
CD100RC	KEY	067-01	Rubber Tube 1.07mm UL CSA		0,080		1
CD100RC	PW-S	001-CD100-0N8	P.C.B CD100 POWER W/REMOTE BOARD REV-0		1,000		1
CD100RC	PW-S	002-04013-B49	I.C. TC4013BP		1,000	IC501	1
CD100RC	PW-S	002-05123-059	I.C. TD5123 (ELEC VOLUME CTRL)		1,000		1
CD100RC	PW-S	002-07808-P00	I.C. KIA7808P.		1,000	IC202	1

CD100RC	PW-S	003-00772-002	TRANSISTOR 2SB772 NEC	1,000	Q9		1
CD100RC	PW-S	003-08050-014	TRANSISTOR JE8050C NEC	3,000	Q8,11,12		1
CD100RC	PW-S	003-09014-C10	TRANSISTOR 9014C CS	8,000	Q1,2,3,4,5,6,10,2Q1		1
CD100RC	PW-S	005-C010B-043	RESISTOR 1 OHM 1/2W ?%	2,000	R57,54		1
CD100RC	PW-S	005-C101B-023	RESISTOR 100 OHM 1/4W ?%	4,000	R55,32,26,52		1
CD100RC	PW-S	005-C102B-023	RESISTOR 1 K 1/4W ?%	6,000	R53,44,50,2R7,2R3,2R2		1
CD100RC	PW-S	005-C103B-023	RESISTOR 10 K 1/4W ?%	10,000	R124,123,27,120,121,41,42,20,19,2R4		1
CD100RC	PW-S	005-C104B-023	RESISTOR 100 K 1/4W ?%	2,000	R21,48		1
CD100RC	PW-S	005-C123B-023	RESISTOR 12 K 1/4W ?%	2,000	R126,2R1		1
CD100RC	PW-S	005-C124B-023	RESISTOR 120 K 1/4W ?%	2,000	R103,105		1
CD100RC	PW-S	005-C152B-023	RESISTOR 1.5 K 1/4W ?%	2,000			1
CD100RC	PW-S	005-C153B-023	RESISTOR 15 K 1/4W ?%	4,000	R24,22,91,92		1
CD100RC	PW-S	005-C182B-023	RESISTOR 1.8 K 1/4W ?%	2,000	R9,120		1
CD100RC	PW-S	005-C184B-023	RESISTOR 180 K 1/4W ?%	2,000	R11,85		1
CD100RC	PW-S	005-C221B-023	RESISTOR 220 OHM 1/4W ?%	2,000	2R6,J7		1
CD100RC	PW-S	005-C222B-023	RESISTOR 2.2 K 1/4W ?%	7,000	R17,15,30,26,25,29,43,105,103		1
CD100RC	PW-S	005-C22XB-023	RESISTOR 2.2 OHM 1/4W ?%	3,000	R34,35,54		1
CD100RC	PW-S	005-C272B-023	RESISTOR 2.7 K 1/4W ?%	4,000	R46,47,121,122		1
CD100RC	PW-S	005-C332B-023	RESISTOR 3.3 K 1/4W ?%	3,000	R12,14,51		1
CD100RC	PW-S	005-C333B-023	RESISTOR 33 K 1/4W ?%	1,000	R23		1
CD100RC	PW-S	005-C390B-023	RESISTOR 39 OHM 1/4W ?%	2,000	R16,18		1
CD100RC	PW-S	005-C472B-023	RESISTOR 4.7 K 1/4W ?%	1,000	R45		1
CD100RC	PW-S	005-C563B-023	RESISTOR 56 K 1/4W ?%	2,000	R40,49		1
CD100RC	PW-S	005-C681B-023	RESISTOR 680 OHM 1/4W ?%	2,000	R38,39		1
CD100RC	PW-S	005-C682B-023	RESISTOR 6.8 K 1/4W ?%	2,000	R10,13		1
CD100RC	PW-S	010-CD60-03	Heatsink CD60	1,000			1
CD100RC	PW-S	011-A1028-020	CERAMIC CAP. 0.001 UF 63V ?0/50%	4,000	C41,43,62,63		1
CD100RC	PW-S	011-A1048-010	CERAMIC CAP. 0.1 UF 63V ?0/50%	2,000	C1,45		1
CD100RC	PW-S	011-A2038-030	CERAMIC CAP. 0.02 UF 63V ?0/50%	6,000	C61,65,68,69,70,71		1
CD100RC	PW-S	011-A5008-020	CERAMIC CAP. 50 PF 63V ?0/50%	2,000			1
CD100RC	PW-S	012-A1057-002	ELECT. CAP. 1 MFD ?0% 10V	2,000	C35,32		1
CD100RC	PW-S	012-A1067-002	ELECT. CAP. 10 MFD 10V ?0%	2,000	C60,C57		1
CD100RC	PW-S	012-A1077-002	ELECT. CAP. 100 MFD 10V ?0% (5x11)	7,000	C40,44,46,50,54,58,42		1
CD100RC	PW-S	012-A1087-002	ELECT. CAP. 1000 MFD 10V ?0% (8x16)	3,000	C47,49,72		1
CD100RC	PW-S	012-A2257-002	ELECT. CAP. 2.2 MFD ?0% 10V	2,000	C27,C26		1
CD100RC	PW-S	012-A2267-002	ELECT. CAP. 22 MFD 10V ?0% (5x11)	1,000	C38		1
CD100RC	PW-S	012-A2277-002	ELECT. CAP. 220 MFD 10V ?0% (6x12)	5,000	C31,36,39,2C1,2C2		1
CD100RC	PW-S	012-A2287-003	ELECT. CAP. 2200 MFD 16V ?0% (12x20)	2,000	C114,53		1
CD100RC	PW-S	012-A4757-006	ELECT. CAP. 4.7 MFD 50V ?0% (5x11)	11,000	C29,30,33,34,37,56,66,67,116,126,55		1
CD100RC	PW-S	013-A1546-000	MYLAR CAP. 0.15 UF	2,000	C48,51		1
CD100RC	PW-S	021-005	DIODE IN4148	6,000	D3,4,5,6,2R5,2D2		1
CD100RC	PW-S	021-020	DIODE IN-4004	5,000	D7,8,9,10,2D1		1
CD100RC	PW-S	021-20075	DIODE ZENER 7.5V	2,000	ZD1,2		1
CD100RC	PW-S	029-0533	BAND SWITCH SK63D02RG12	1,000			1
CD100RC	PW-S	029-0628	TACT SWITCH TS-00100A <01>	2,000	S1,2		1
CD100RC	PW-S	036-02S-P2	Connector 2 Pin Socket (Pitch=2mm)	1,000	CN13		1
CD100RC	PW-S	036-03S	Connector 3 Pin Socket	1,000	CN8		1
CD100RC	PW-S	036-03S-P2	Connector 3 Pin Socket (Pitch=2mm)	1,000	CN12		1
CD100RC	PW-S	036-06S-P2	Connector 6 Pin Socket (Pitch=2mm)	2,000	CN1,11		1
CD100RC	PW-S	036-08S-P2	Connector 8 Pin Socket (Pitch=2mm)	1,000	CN5		1
CD100RC	PW-S	036-09S-P2	Connector 9 Pin Socket (Pitch=2mm)	1,000	CN6		1
CD100RC	PW-S	079-174	Eyelet 1.7x4mm	2,000			1
CD100RC	PW-S	080-305	Nut M3x0.5	1,000	FOR HEATSING SCREW		1

CD100RC	PW-S	081-PM 38	Screw P3x8Mx0.5		1,000	FOR HEATSING	1
CD100RC	PW-S	083-100	Jumper Wire (9x1.3) 100mm		1,000		1
CD100RC	PW-S	083-60	Jumper Wire (9x1.3) 60mm		1,000		1
CD100RC	PW-S	088-60	Jumper Wire (17x0.19) 60mm		1,000		1
CD100RC	PW-S	010-CD100-01	HEATSINK CD100-212		1,000		1
CD100RC	PW-S	002-03227-0C1	I.C. DV3227		1,000		1
CD100RC	REC-S	001-SL365-006	P.C.B SL365 RECORDING BOARD "ST"		1,000	REC PCB	1
CD100RC	REC-S	002-03312-N03	I.C. BA3312N		1,000	IC801	1
CD100RC	REC-S	003-08050-014	TRANSISTOR JE8050C NEC		1,000	Q801	1
CD100RC	REC-S	004-1020031	I.F.T. 10MM 20031-241 (BROWN)		1,000	L803	1
CD100RC	REC-S	004-3-1000	CHOCK COIL 10MH		2,000	L801,802	1
CD100RC	REC-S	005-C100B-023	RESISTOR 10 OHM 1/4W ?%		2,000	R801,802	1
CD100RC	REC-S	005-C101B-023	RESISTOR 100 OHM 1/4W ?%		1,000	R813	1
CD100RC	REC-S	005-C103B-023	RESISTOR 10 K 1/4W ?%		2,000	R811,812	1
CD100RC	REC-S	005-C104B-023	RESISTOR 100 K 1/4W ?%		2,000	R831,832	1
CD100RC	REC-S	005-C153B-023	RESISTOR 15 K 1/4W ?%		1,000	R823	1
CD100RC	REC-S	005-C221B-023	RESISTOR 220 OHM 1/4W ?%		2,000	R805,806	1
CD100RC	REC-S	005-C224B-023	RESISTOR 220 K 1/4W ?%		2,000	R809,810	1
CD100RC	REC-S	005-C330B-023	RESISTOR 33 OHM 1/4W ?%		1,000	R826	1
CD100RC	REC-S	005-C333B-023	RESISTOR 33 K 1/4W ?%		3,000	R814,821,822	1
CD100RC	REC-S	005-C392B-023	RESISTOR 3.9 K 1/4W ?%		1,000	R824	1
CD100RC	REC-S	005-C472B-023	RESISTOR 4.7 K 1/4W ?%		2,000	R86,830	1
CD100RC	REC-S	005-C473B-023	RESISTOR 47 K 1/4W ?%		2,000	R803,804	1
CD100RC	REC-S	005-C562B-023	RESISTOR 5.6 K 1/4W ?%		2,000	R815,816	1
CD100RC	REC-S	005-C56XB-023	RESISTOR 5.6 OHM 1/4W		1,000	R825	1
CD100RC	REC-S	005-C682B-023	RESISTOR 6.8 K 1/4W ?%		2,000	R817,818	1
CD100RC	REC-S	005-C822B-023	RESISTOR 8.2K 1/4W ?%		4,000	R807,808,819,820	1
CD100RC	REC-S	011-A1028-020	CERAMIC CAP. 0.001 UF 63V ?0/50%		2,000	C824,825	1
CD100RC	REC-S	011-A1048-010	CERAMIC CAP. 0.1 UF 63V ?0/50%		2,000	C834,841	1
CD100RC	REC-S	011-A2028-030	CERAMIC CAP. 0.002 UF 63V ?0/50%		2,000	C828,829	1
CD100RC	REC-S	011-A3318-020	CERAMIC CAP. 330 PF 63V ?0/50%		3,000	C826,827,832	1
CD100RC	REC-S	011-A5018-030	CERAMIC CAP. 500 PF 63V ?0/50%		3,000	C830,831,837	1
CD100RC	REC-S	011-A5028-030	CERAMIC CAP. 0.005 UF 63V ?0/20%		2,000	C811,812	1
CD100RC	REC-S	011-A5608-020	CERAMIC CAP. 56 PF 63V ?0/20%		2,000	C805,806	1
CD100RC	REC-S	012-A1077-003	ELECT. CAP. 100 MFD 16V ?0% (6x11)		2,000	C807,808	1
CD100RC	REC-S	012-A2267-003	ELECT. CAP. 22 MFD 16V ?0%		2,000	C813,821	1
CD100RC	REC-S	012-A2277-003	ELECT. CAP. 220 MFD 16V ?0% (6x12)		1,000	C814	1
CD100RC	REC-S	012-A4757-006	ELECT. CAP. 4.7 MFD 50V ?0% (5x11)		8,000	C801,802,809,810,815,816,819,820	1
CD100RC	REC-S	012-A4767-003	ELECT. CAP. 47 MFD 16V ?0% (5x11)		3,000	C73,838,842	1
CD100RC	REC-S	013-A1026-000	MYLAR CAP. 0.001 UF		1,000	C833	1
CD100RC	REC-S	013-A1036-000	MYLAR CAP. 0.01 UF		2,000	C835,836	1
CD100RC	REC-S	013-A2226-000	MYLAR CAP. 0.0022 UF		2,000	C803,804	1
CD100RC	REC-S	013-A2236-000	MYLAR CAP. 0.022 UF		2,000	C817,818	1
CD100RC	REC-S	013-A3326-000	MYLAR CAP. 0.0033 UF		2,000	R822,823	1
CD100RC	REC-S	029-0304	BAND SWITCH PS922		1,000	SW801	1
CD100RC	REC-S	036-02S	Connector 2 Pin Socket		1,000	CN802	1
CD100RC	REC-S	036-05S-P2	Connector 5 Pin Socket (Pitch=2mm)		1,000	CN801	1
CD100RC	REC-S	036-08S-P2	Connector 8 Pin Socket (Pitch=2mm)		1,000	CN601	1
CD100RC	REMOTE	001-0CD63-0U4	P.C.B CD63R REMOTE VOL UP/DN "UL" BOARD	REV-1	1,000		1
CD100RC	REMOTE	002-09148-059	I.C. TD9148 (REMOTE CTRL ENCODER)		1,000		1
CD100RC	REMOTE	003-09012-H10	TRANSISTOR 9012H CS		1,000		1
CD100RC	REMOTE	003-09014-C10	TRANSISTOR 9014C CS		1,000		1
CD100RC	REMOTE	005-C010B-023	RESISTOR 1 OHM 1/4W ?%		1,000		1

CD100RC	REMOTE	011-A1018-020	CERAMIC CAP. 100 PF 63V ?0/50%		4,000		1
CD100RC	REMOTE	012-A4768-002	ELECT. CAP. 47 MFD 10V (?0%)		1,000		1
CD100RC	REMOTE	021-005	DIODE IN4148		2,000		1
CD100RC	REMOTE	021-303A-C	DIODE SE INFRARED 303A-C/EL-1L3		1,000		1
CD100RC	REMOTE	024-CSB455E	CERAMIC RESONATOR CSB455E		1,000		1
CD100RC	REMOTE	082-70BK	Jumper Wire (5x0.8) 70mm Black		1,000		1
CD100RC	REMOTE	082-70R	Jumper Wire (5x0.8) 70mm Red		1,000		1

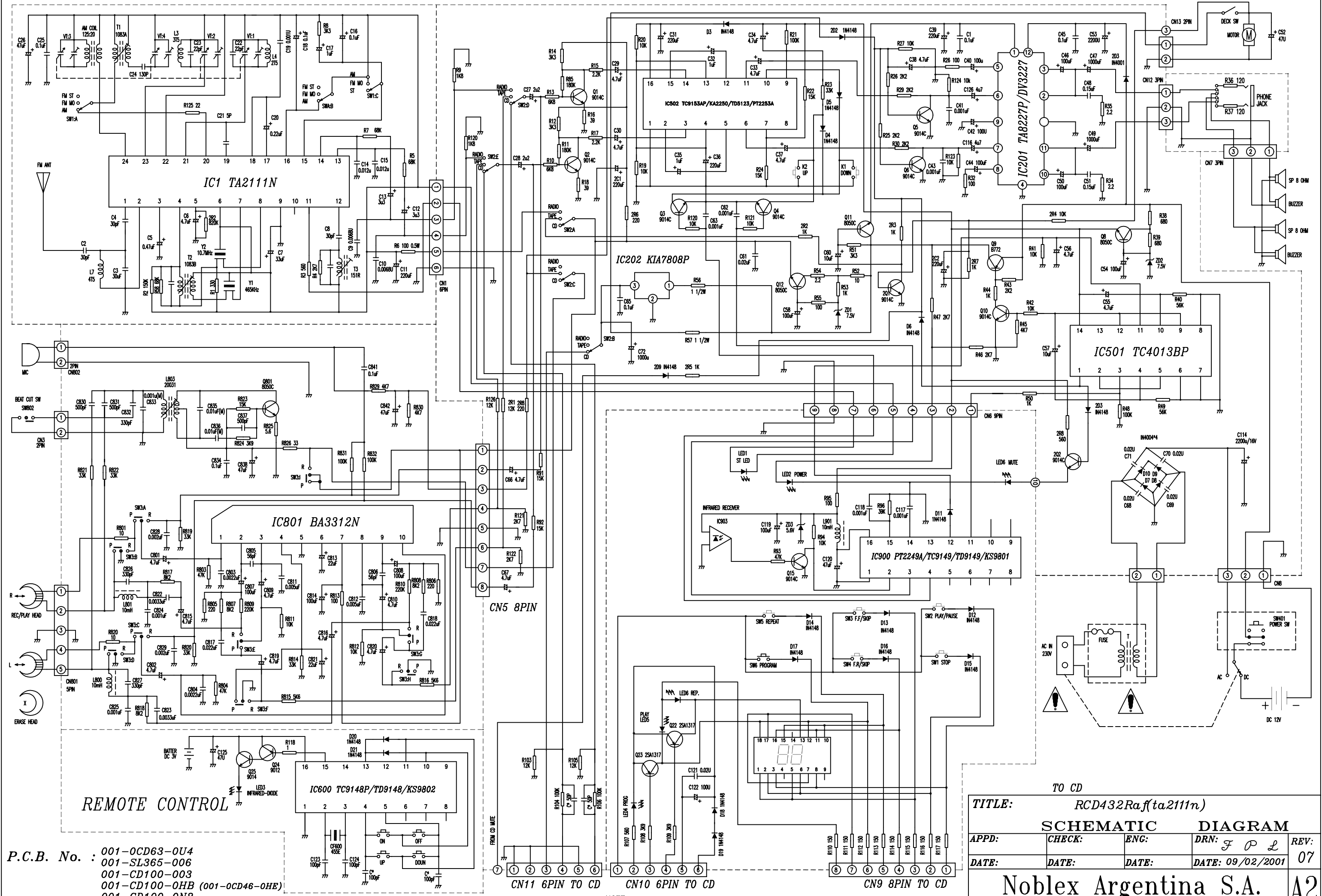


\*OPTION  
 REMOCON CUSTOM CODE SET UP  
 RMTSL1:J001-SHOT/OPEN  
 RMTSL2:J002-SHOT/OPEN.R311-OPEN/ON=10K  
 RMTSL3:J003-SHOT/OPEN.R312-OPEN/ON=10K  
 J004:RANDOM LED  
 NO-SHOUT.CN25-OPEN  
 YES-OPEN.CN25-ON

P.C.B. No. : 001-0CD46-0HH

NOTE:subject to change without notice for improvement!

TITLE:		RCD423-16T11(MM1469XH)		SANYO (CE)	
SCHEMATIC		DIAGRAM			
APPD:	CHECK:	ENG.:	DRN:	REV:	
DATE:	DATE:	DATE:	DATE: 09/02/2001	01	
Noblex Argentina S.A.					A2



P.C.B. No. : 001-0CD63-0U4  
 001-SL365-006  
 001-CD100-003  
 001-CD100-OHB (001-0CD46-OHE)  
 001-CD100-ON8

TO CD

**TITLE:** RCD432Ra(f.ta2111n)

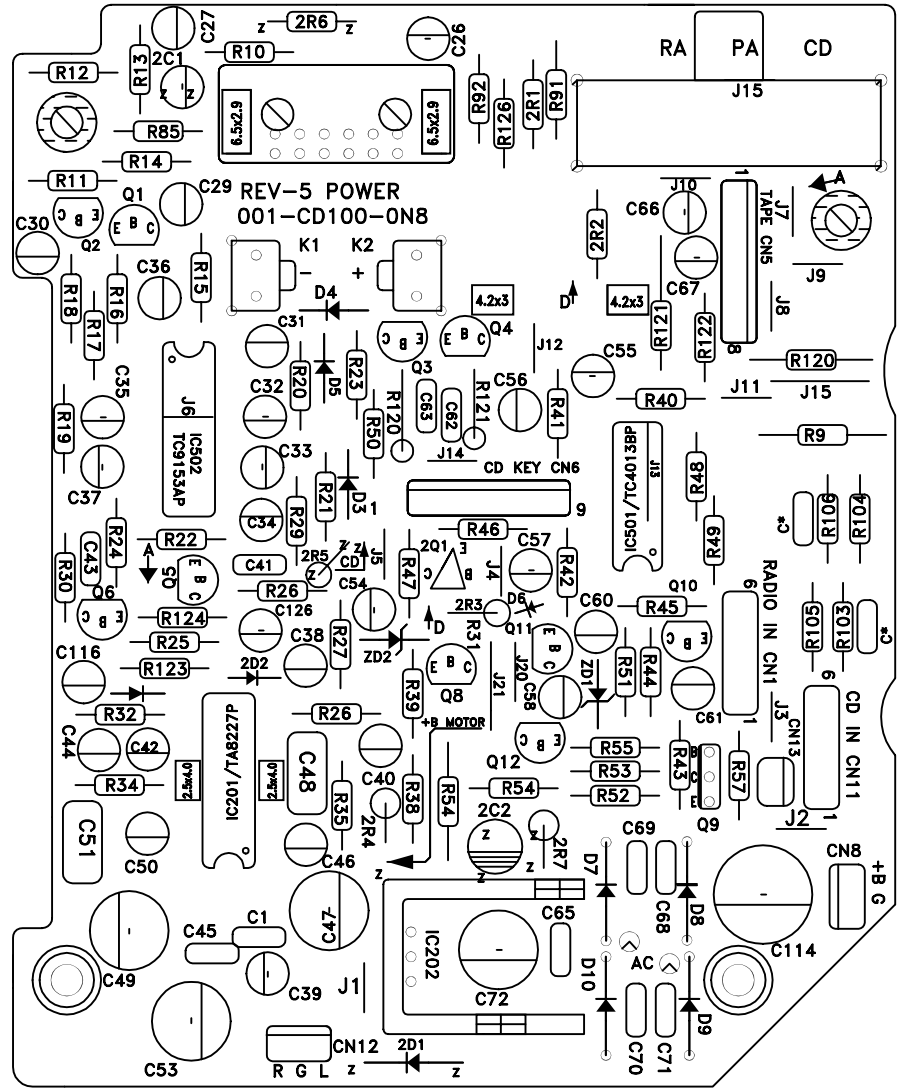
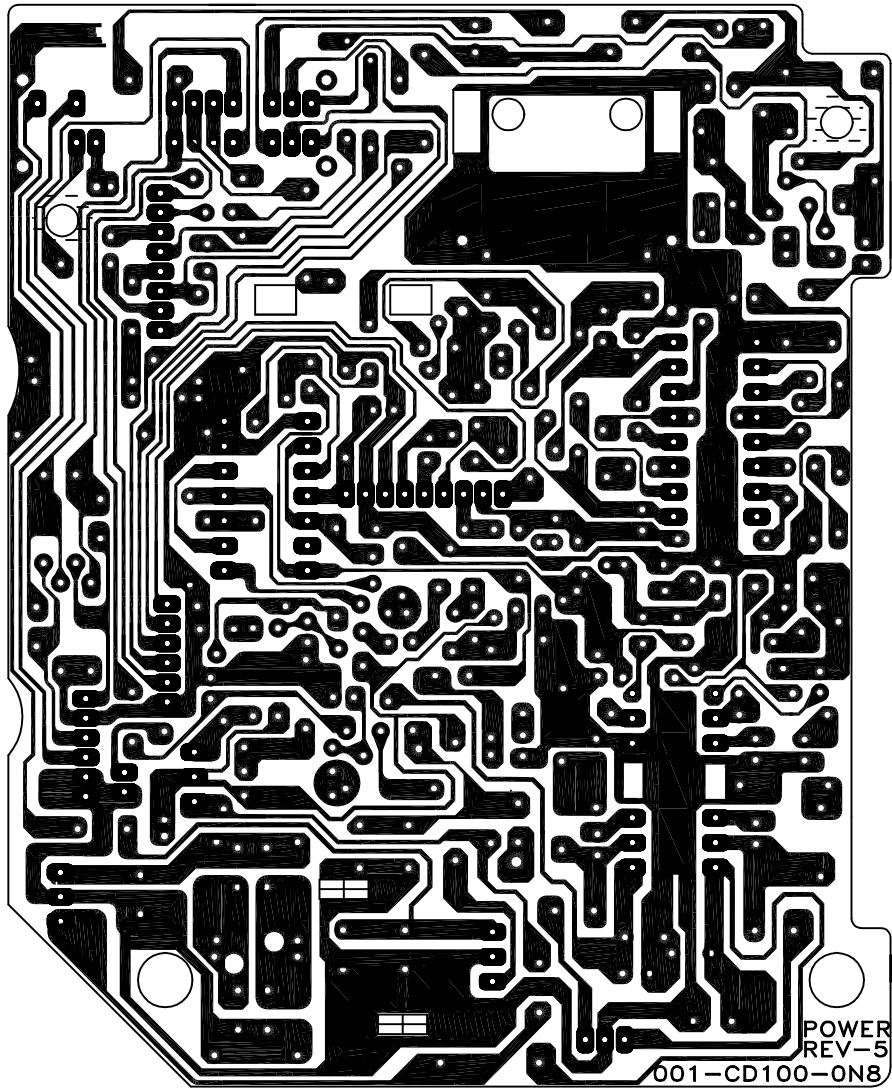
**SCHEMATIC DIAGRAM**

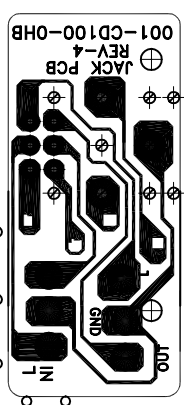
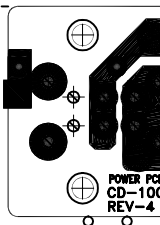
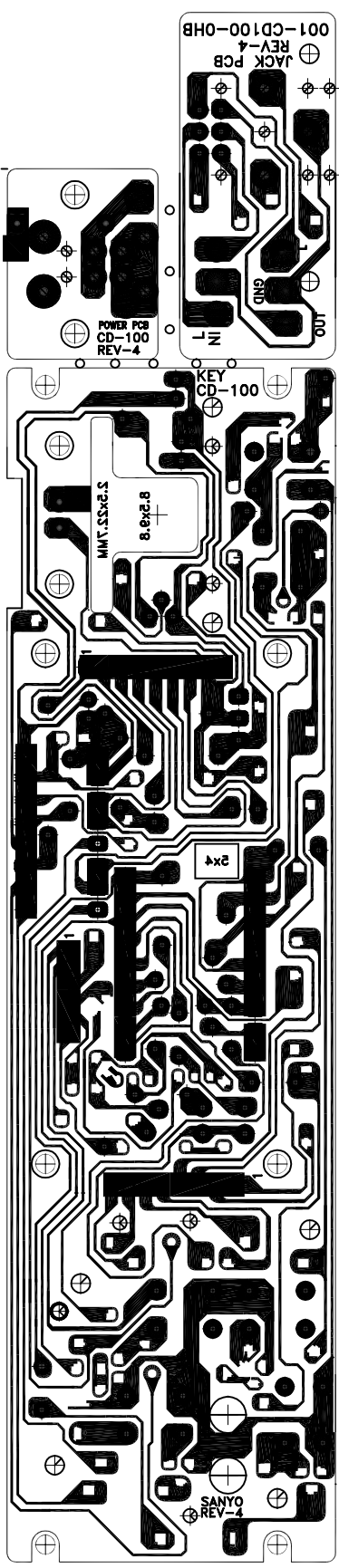
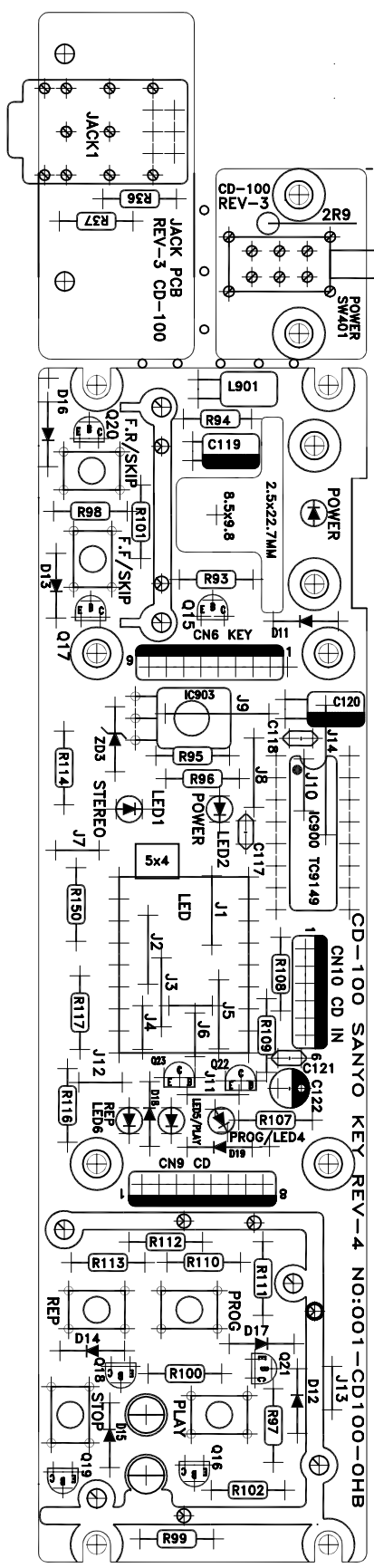
APPD:	CHECK:	ENG:	DRN: F P L	REV: 07
DATE:	DATE:	DATE:	DATE: 09/02/2001	

**Noblex Argentina S.A.** A2

NOTE: subject to change without notice for improvement!







CD-100 SANYO KEY REV-4 NO:001-CD100-OHB

001-CD100-OHB

JACK PCB REV-4

100  
GND

POWER PCB CD-100 REV-4

KEY CD-100

8.2x9.8

5.2x53.1MM

SANYO REV-4

