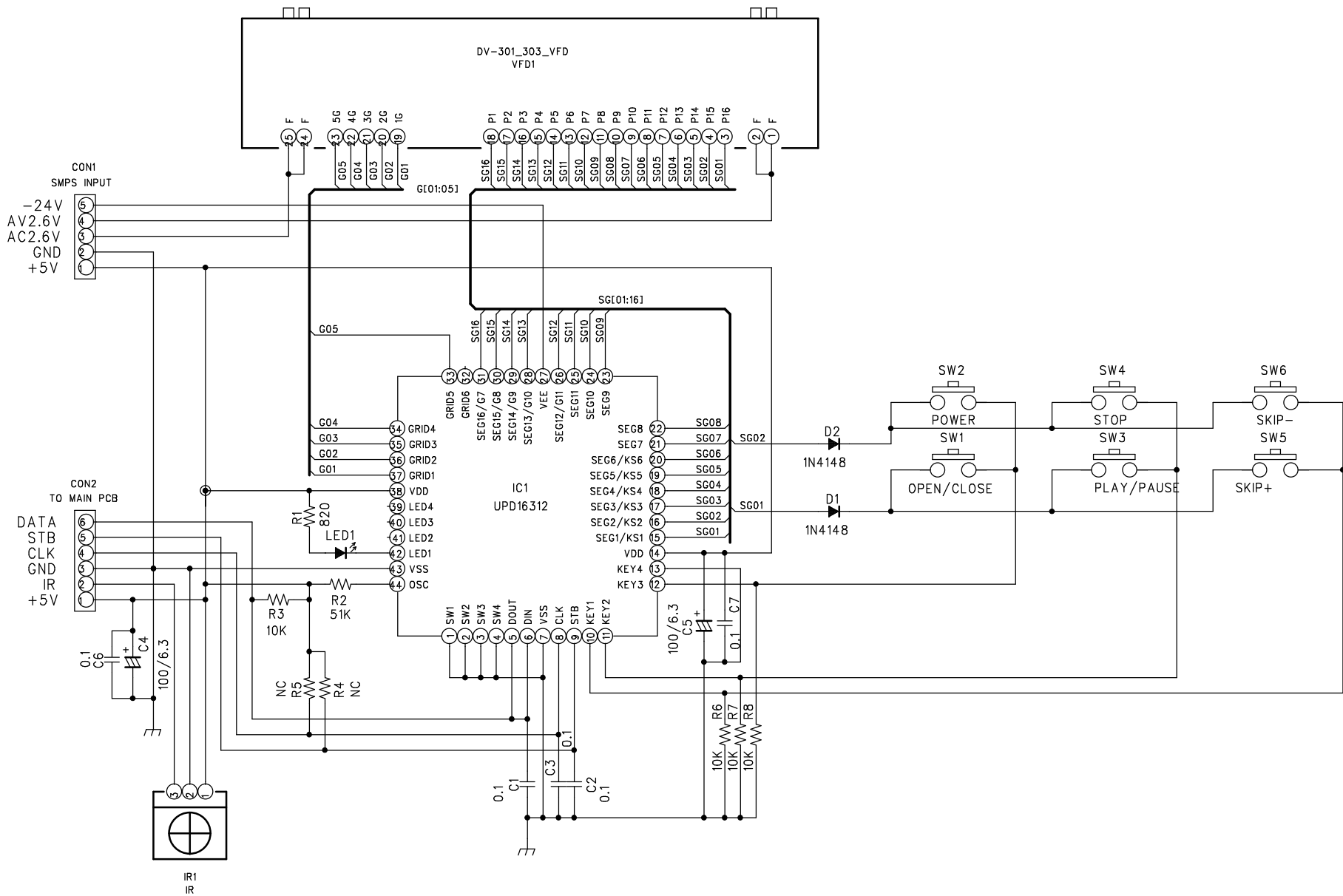


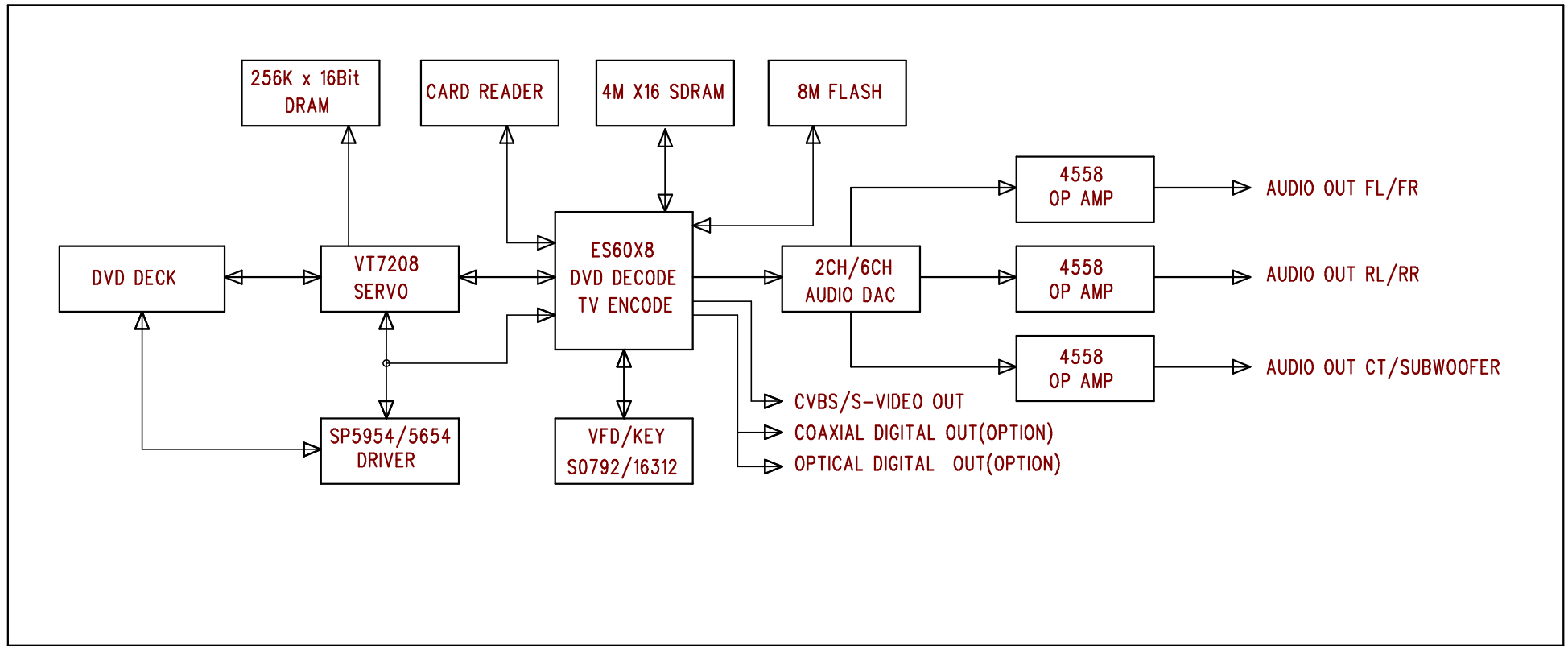
Goodmans

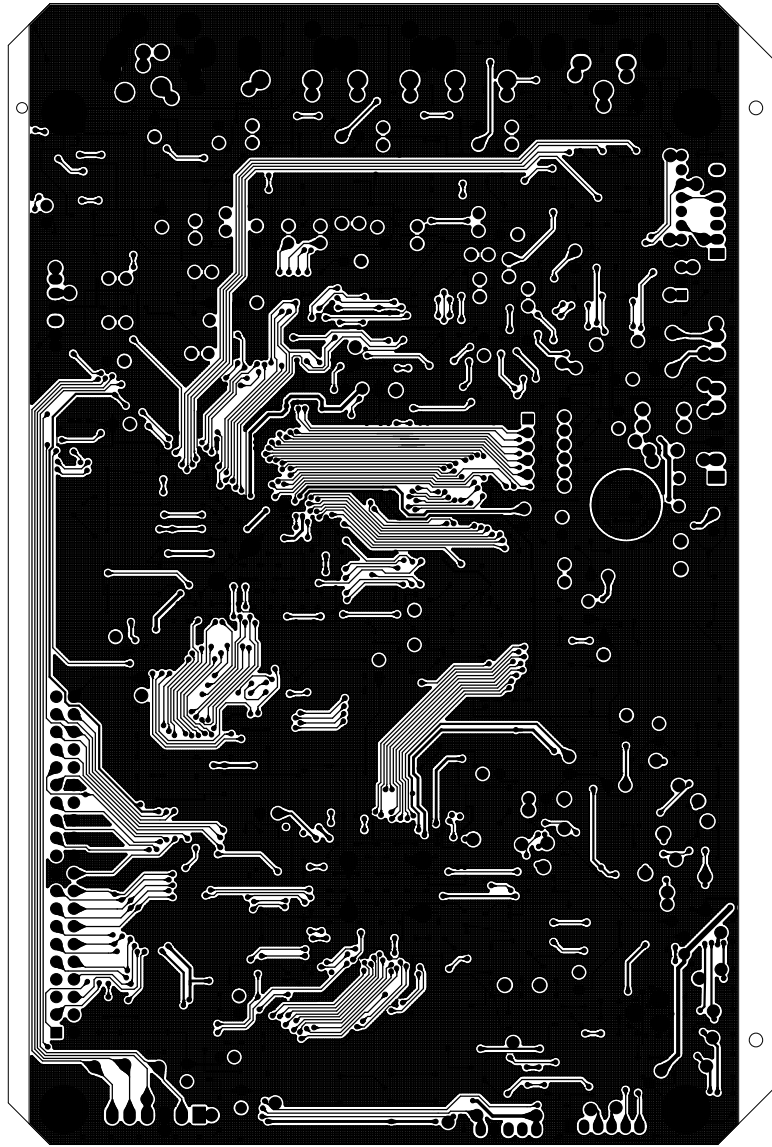


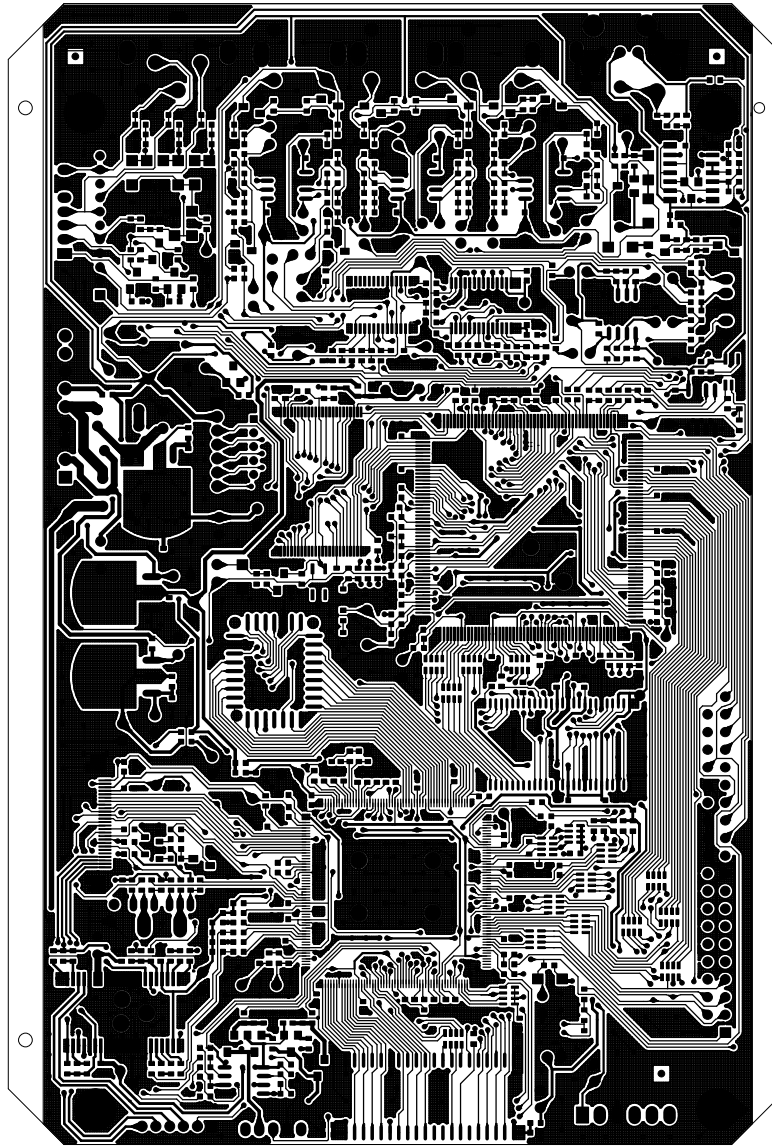
GDVD516S

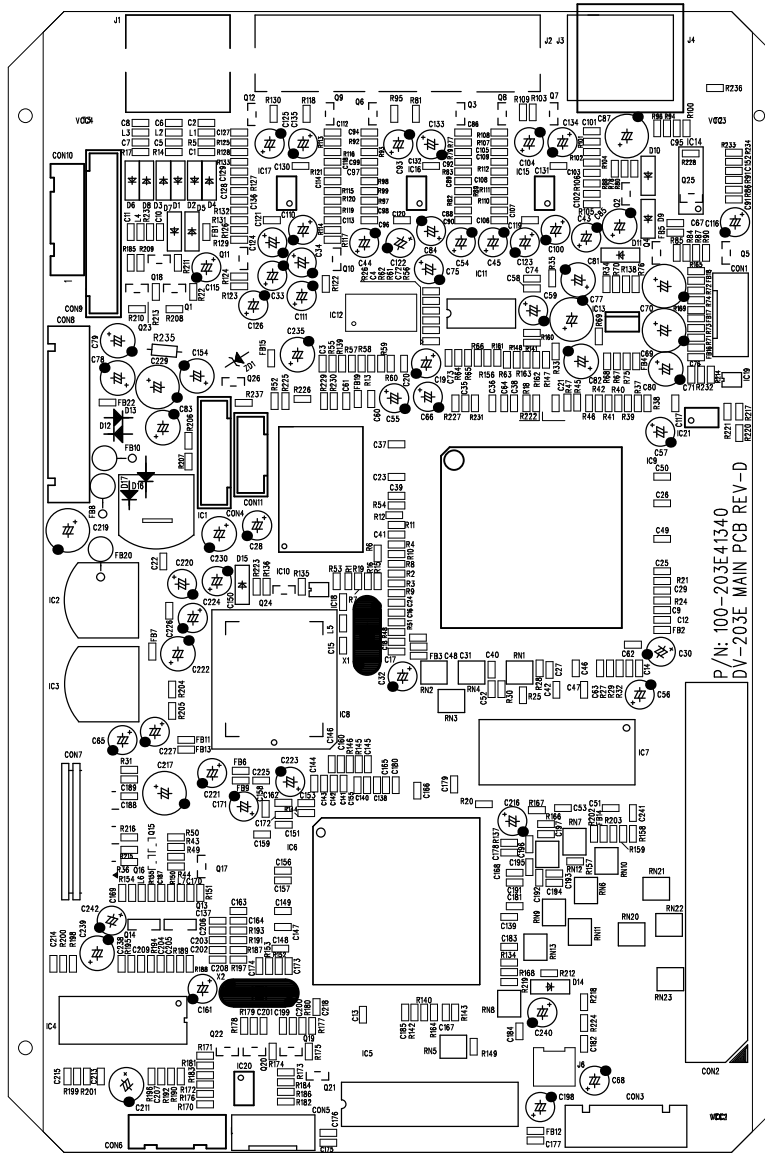
Service Manual - GDVD516S



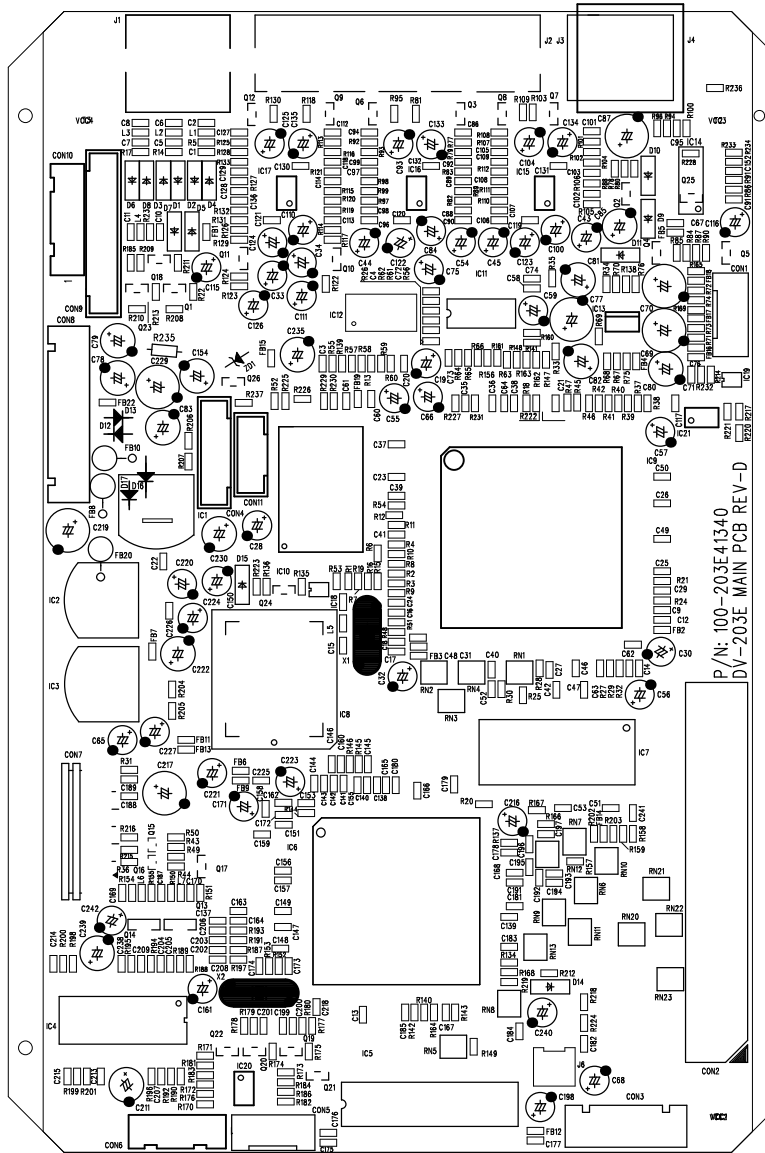






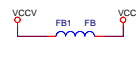


P/N: 100-203E-41340
DV-203E MAIN PCB REV-D



Pull high TMDMX to select 8-bit ROM boot. Pull low to select 16-bit ROM boot.

CHIP#	FREQ SOURCE	R84	DCLKINPUL	MULTI	FREQ2	CRYSTALOSC
ES608	DCLKINPUL OR CRYSTALOSC	INSTALL	NA	X1	108MHz	27MHz
ES608	DCLKINPUL OR CRYSTALOSC	INSTALL	NA	X1	108MHz	27MHz
ES608	DCLKINPUL OR CRYSTALOSC	INSTALL	NA	X1	108MHz	27MHz
ES608	DCLKINPUL AND CRYSTALOSC	REMOVE	33.3MHz	X35	116.8MHz	27MHz

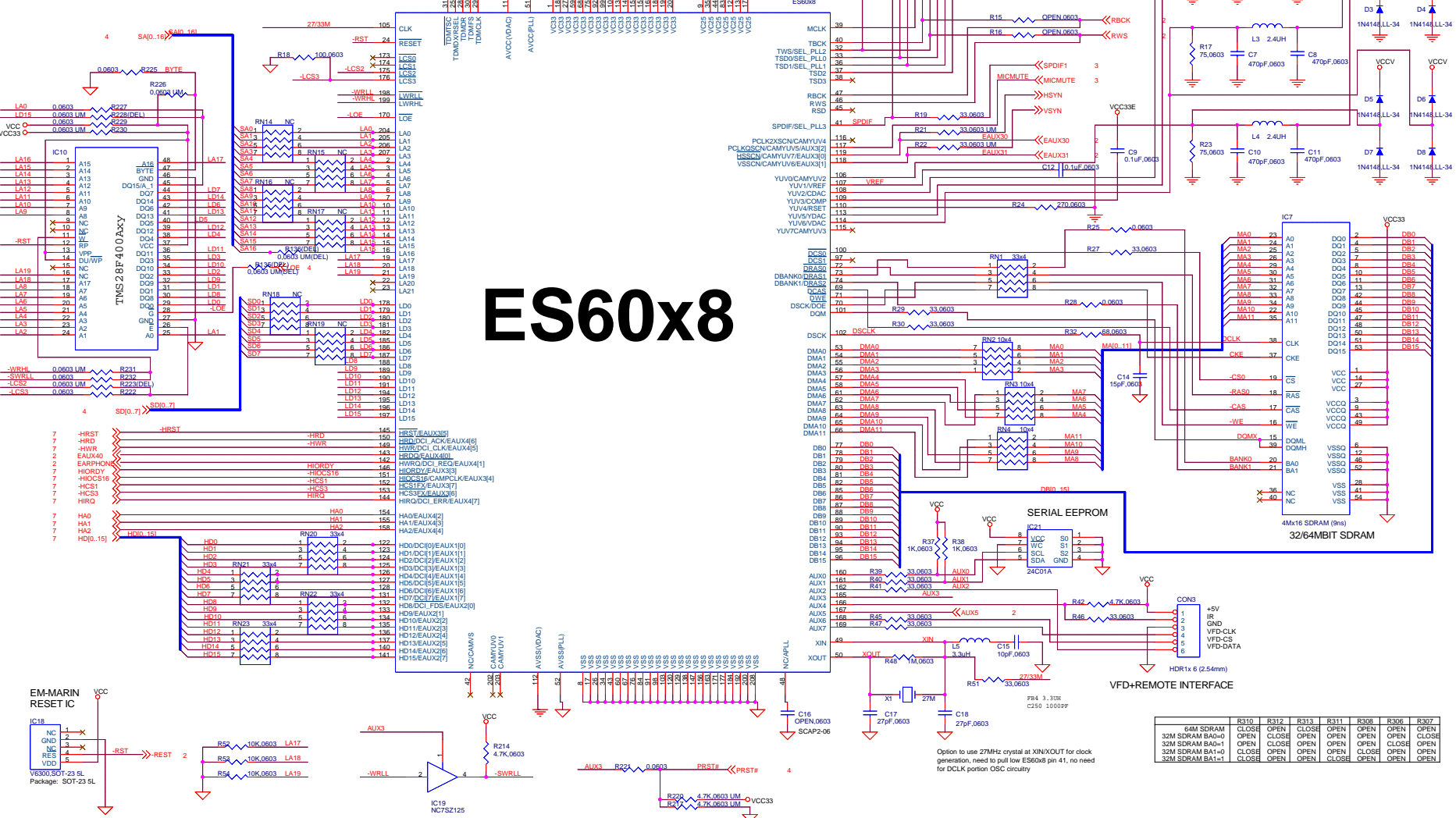


VIDAC	CVBS and Y	YBS and COLOR	R, G, B
VIDAC	Y	Y	G
VIDAC	Y	Y	B
VIDAC	Y	Y	R

PLL3pin41	CLK SOURCE
1	CRYSTAL OSC
0	

PLL2pin2	PLL1pin0	PLL0pin3	MULTI	Frequency
0	0	0	4.25	114.25
0	0	1	reserved	NA
0	1	0	bypass	27
0	1	1	3.75	101.25
1	0	0	reserved	NA
1	1	0	3.5	94.5
1	1	1	4	108

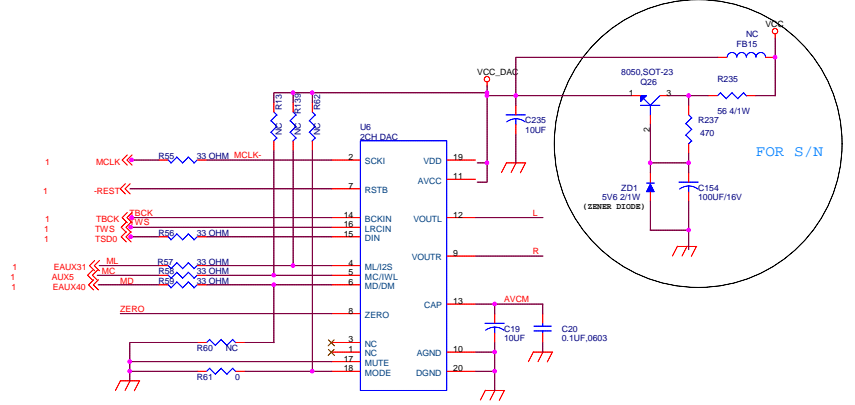
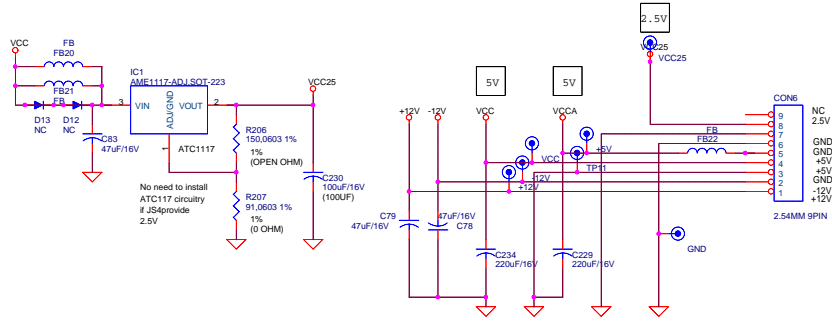
MANUFACTURE	PART #	DIP 9	DIP10	DIP 11	DIP12	DIP13	DIP14	DIP15	DIP16	DIP17
INTEL	28F0085	NC	NC	RP	VPP	NC	NC	WP	WE	NC
TI	TM628F400A3	NC	NC	RP	VPP	NC	NC	WP	WE	NC
TI	TM628F400A3	NC	NC	RP	VPP	NC	NC	WP	WE	NC
SHARP	LS628011	NC	NC	RP	VPP	NC	NC	WP	WE	NC
AMS	M28F008	NC	NC	RP	VPP	NC	NC	WP	WE	NC
AVMEL	A7495F192A1	NC	NC	RP	VPP	NC	NC	WP	WE	NC
SST	SST39VF400	NC	NC	NC	NC	NC	NC	NC	NC	NC
SST	SST39VF600	NC	NC	NC	NC	NC	NC	NC	NC	NC
SST	SST39VF400Q	NC	NC	NC	NC	NC	NC	NC	NC	NC
SST	SST39VF600Q	NC	NC	NC	NC	NC	NC	NC	NC	NC
SST	M28F800A3	NC	NC	RP	VPP	NC	NC	WP	WE	NC
SST	M28F800A3	NC	NC	RP	VPP	NC	NC	WP	WE	NC
MICR	M28F800B7	NC	NC	RP	VPP	NC	NC	WP	WE	NC



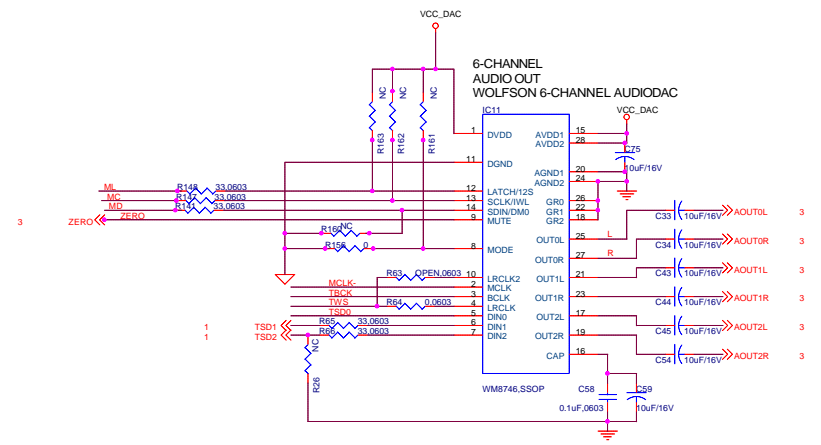
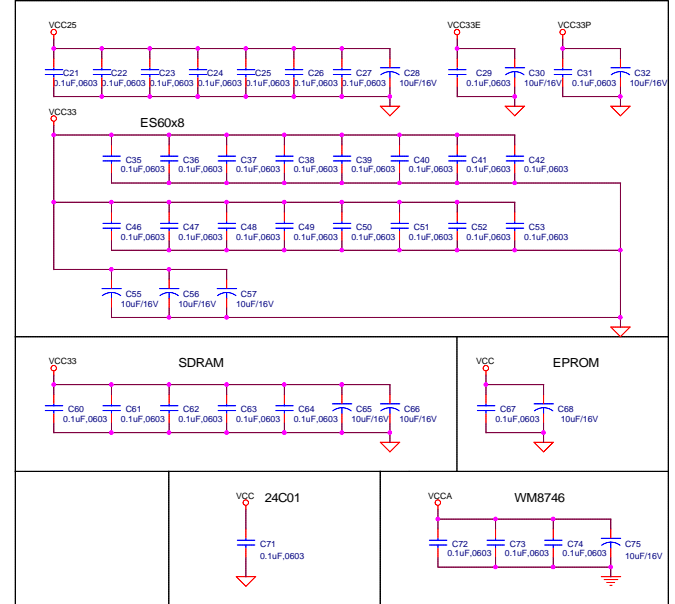
ES60x8

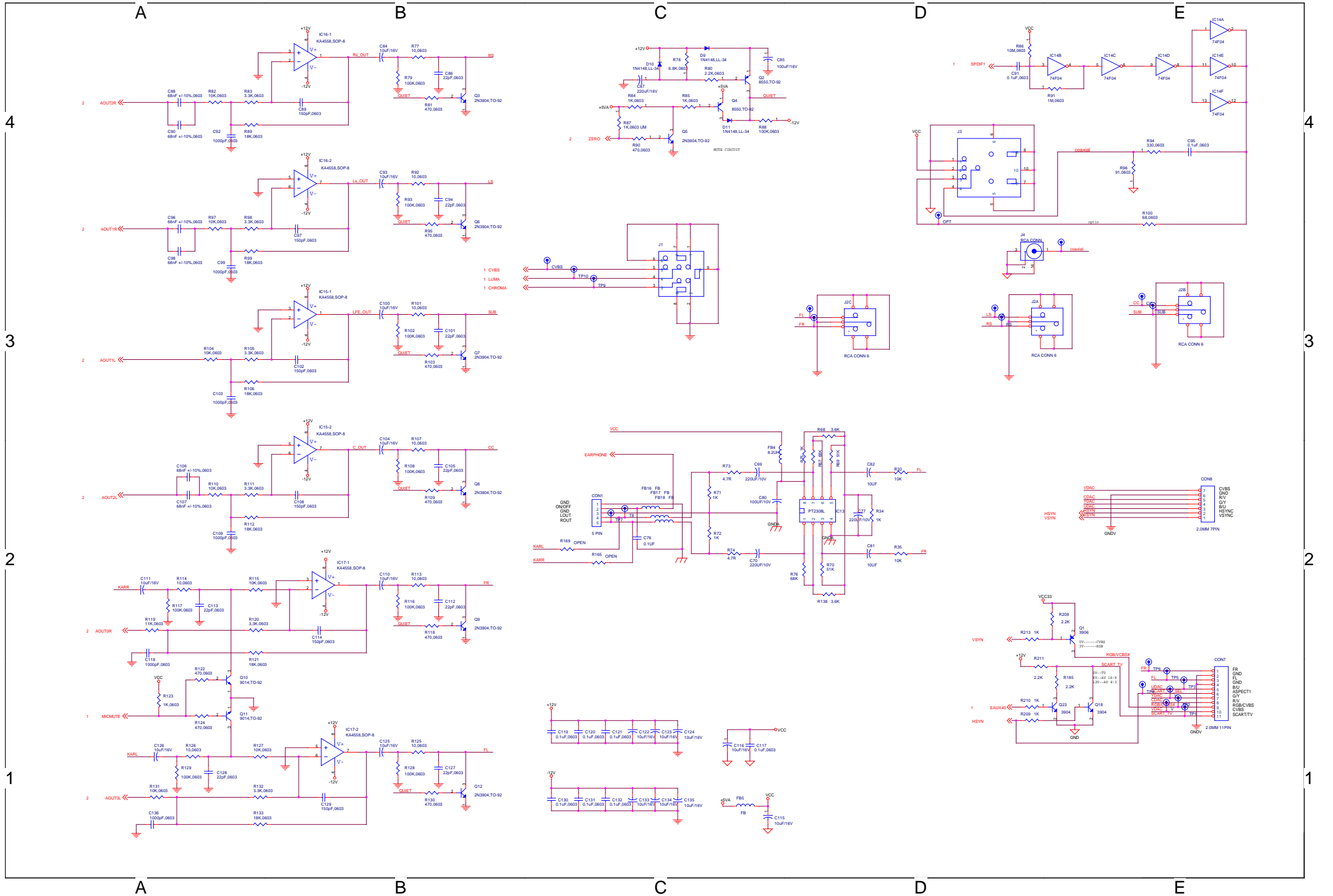
64M SDRAM	R310	R312	R313	R311	R308	R306	R307
32M SDRAM BA0=0	OPEN	CLOSE	OPEN	OPEN	OPEN	OPEN	CLOSE
32M SDRAM BA0=1	OPEN	CLOSE	OPEN	OPEN	OPEN	OPEN	CLOSE
32M SDRAM BA1=0	OPEN	CLOSE	OPEN	OPEN	OPEN	OPEN	CLOSE
32M SDRAM BA1=1	CLOSE	OPEN	OPEN	CLOSE	OPEN	OPEN	OPEN

The information has been checked and is believed to be reliable. However, no responsibility is assumed for inaccuracies. Circuit diagrams are provided as a means of illustrating typical applications; consequently complete information for construction purposes is not necessarily given. ESS reserves the right to make changes at any time in order to improve the design.



DECOUPLING CAPACITORS





4

3

2

1

4

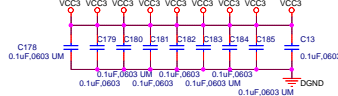
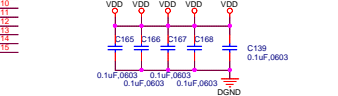
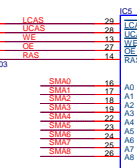
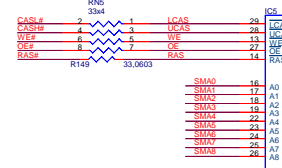
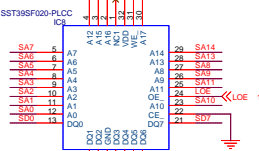
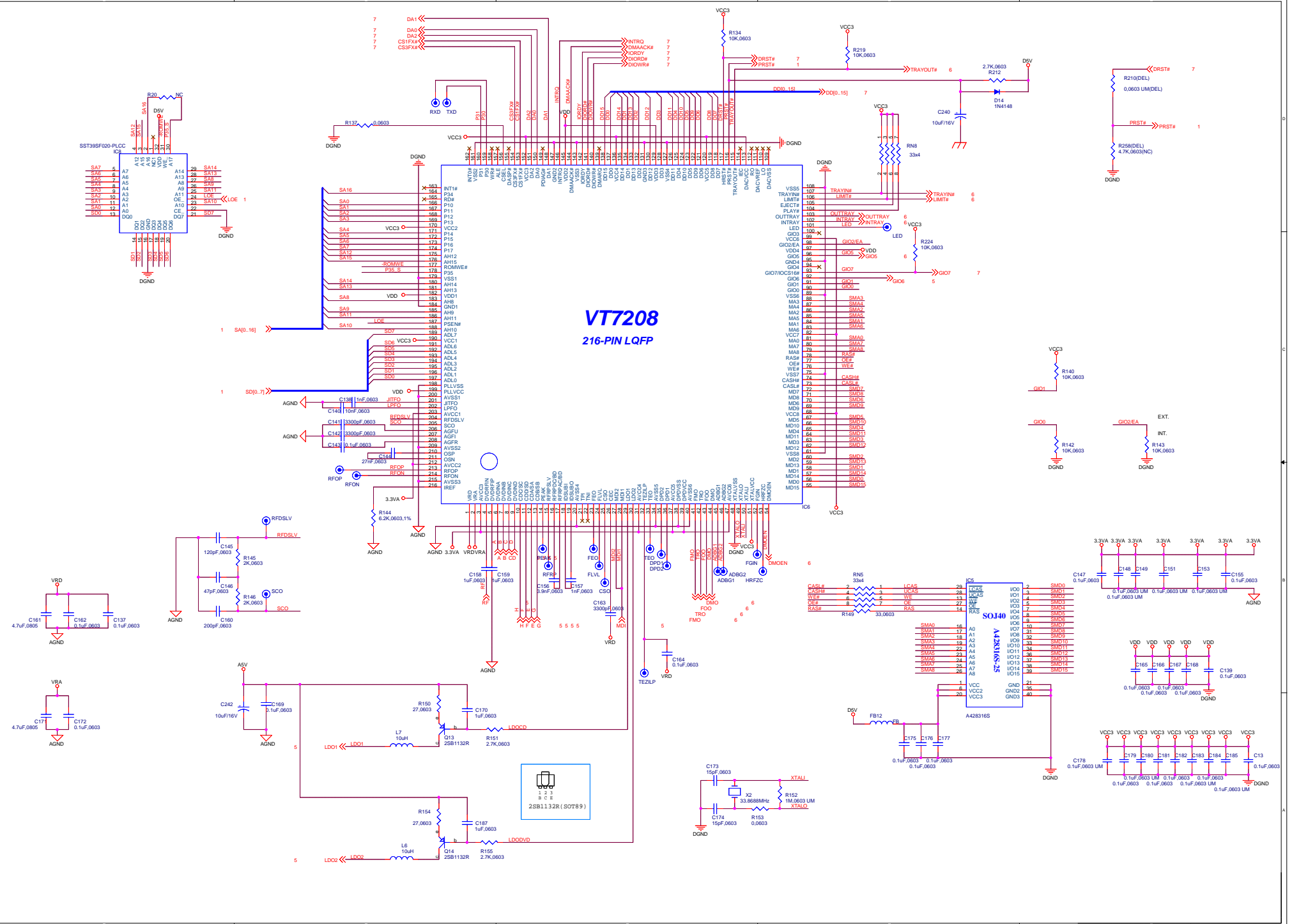
3

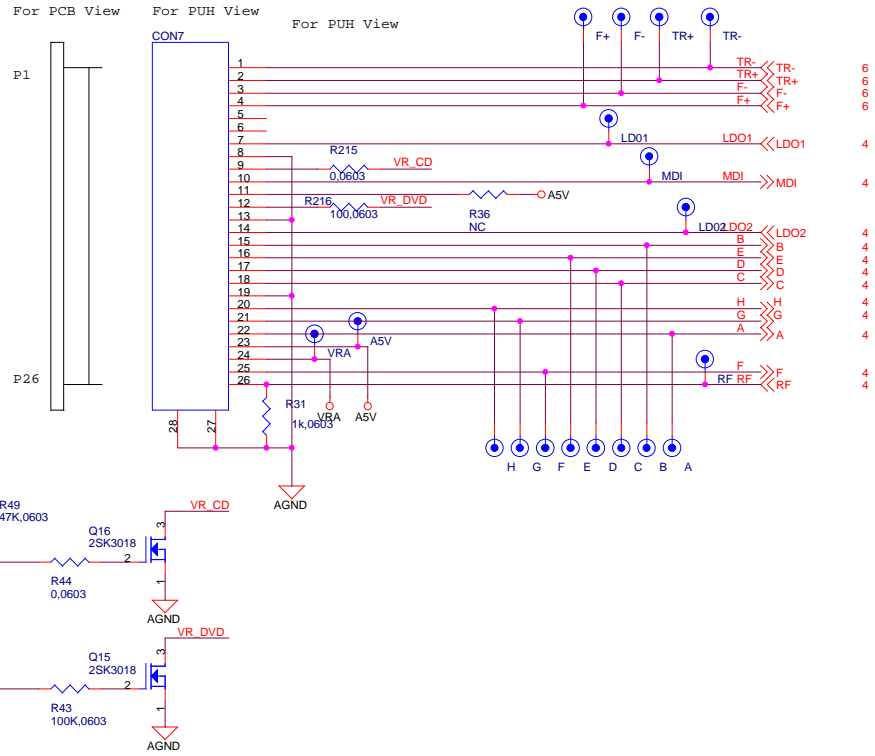
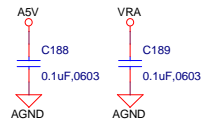
2

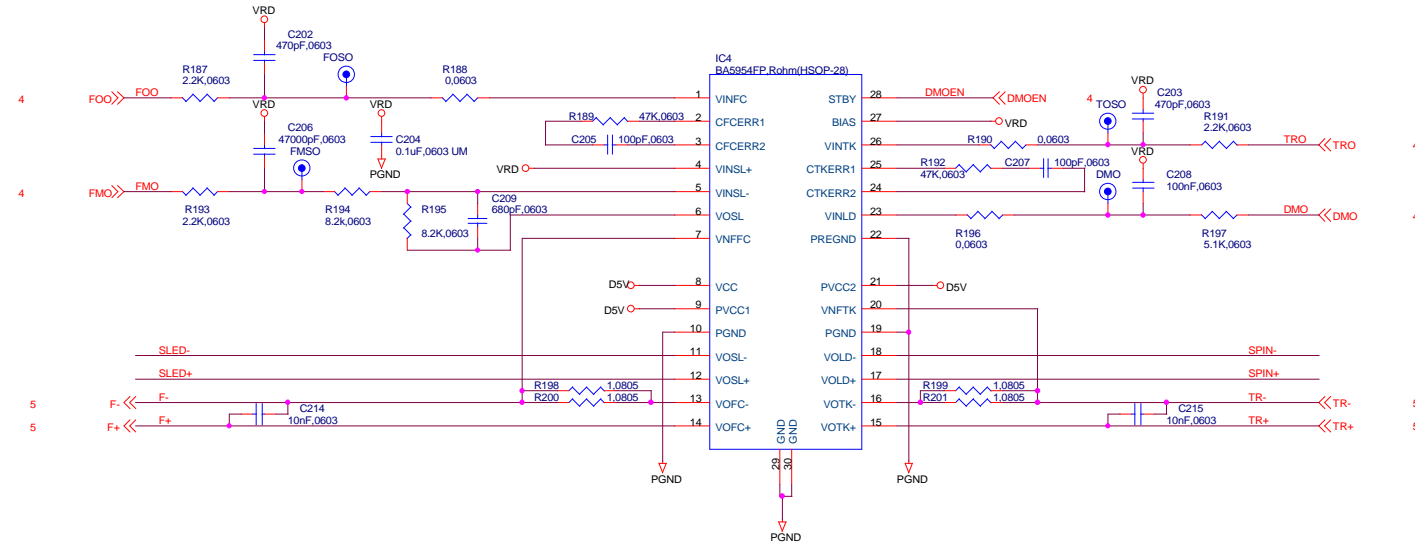
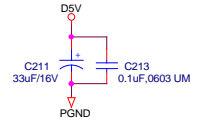
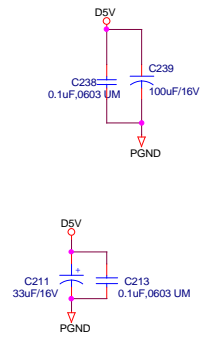
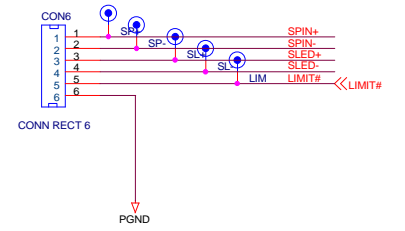
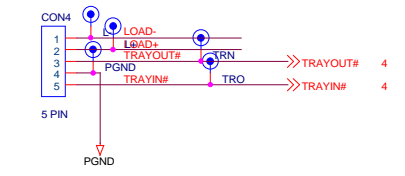
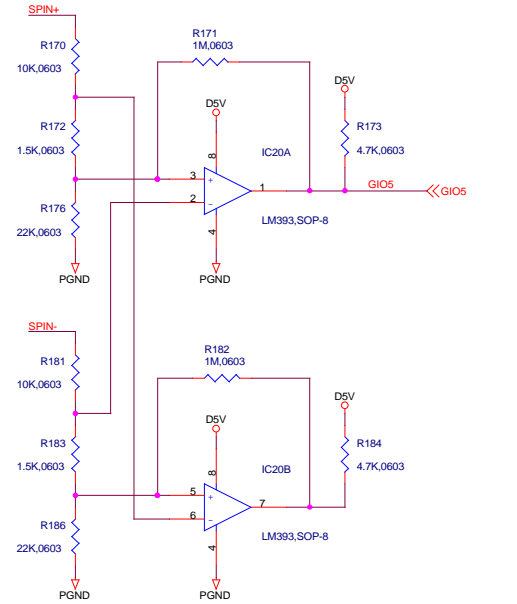
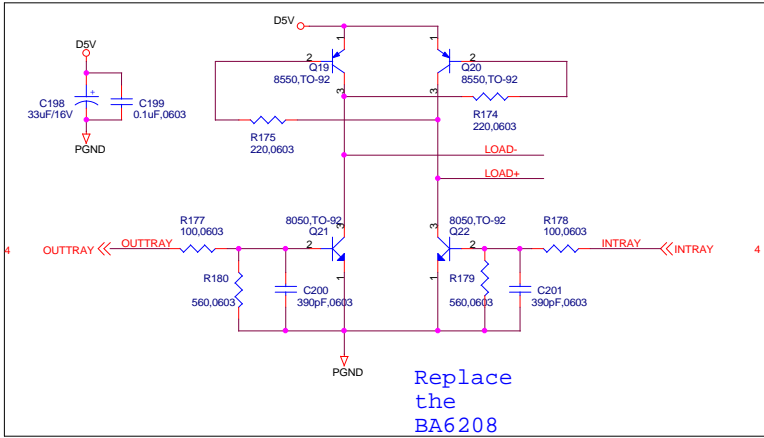
1

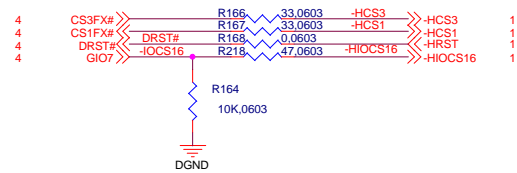
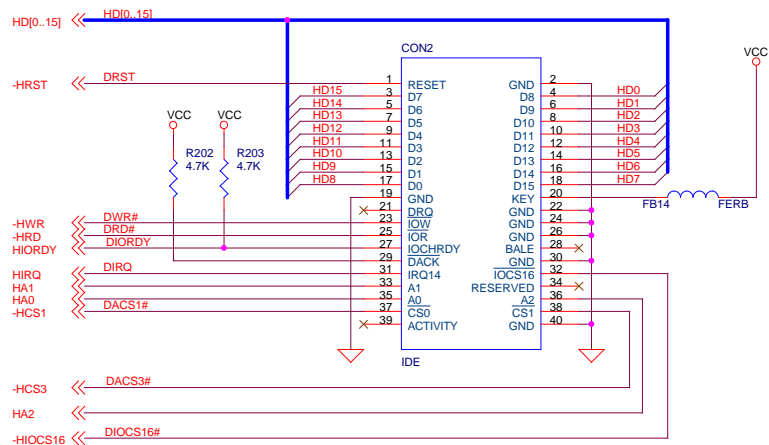
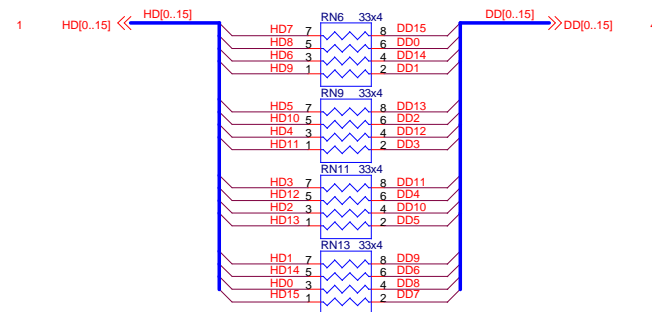
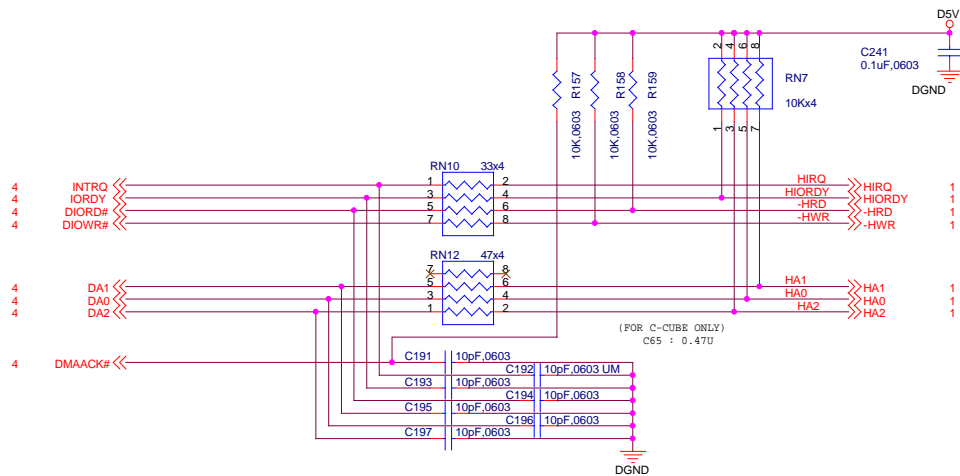
VT7208

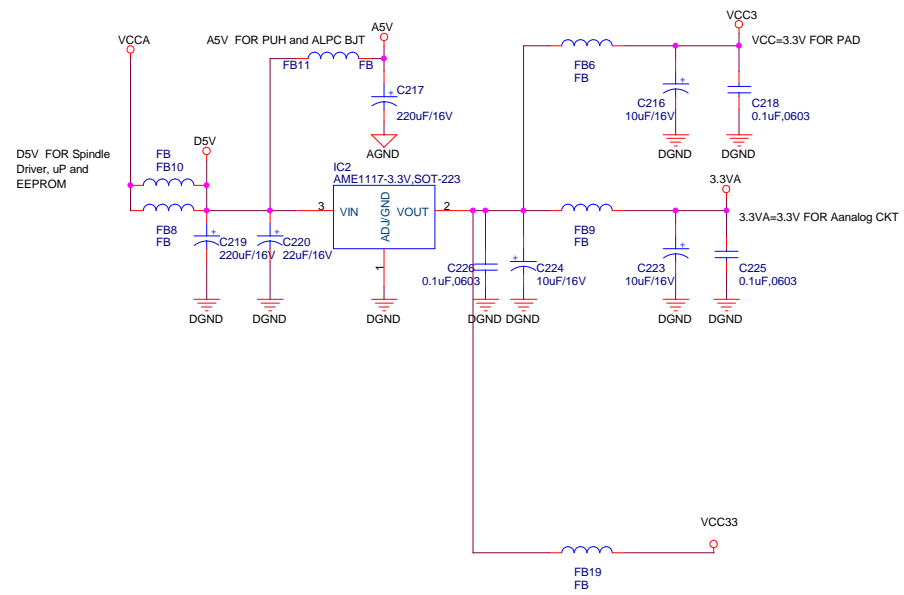
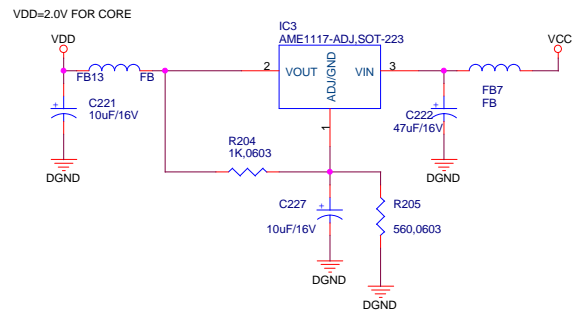
216-PIN LQFP

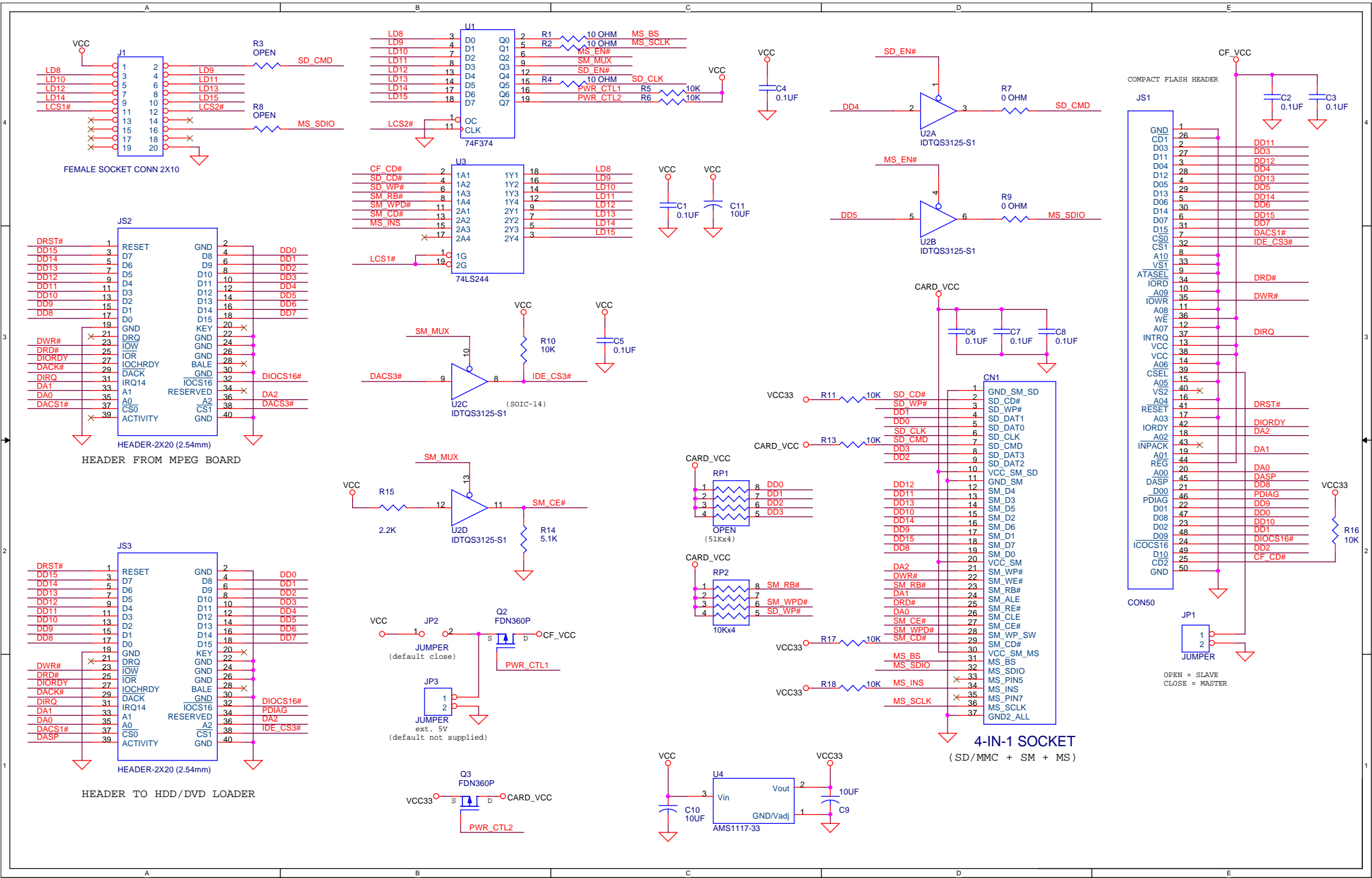












OPEN = SLAVE
CLOSE = MASTER

4-IN-1 SOCKET
(SD/MMC + SM + MS)

Level	No.	Component Name	UM
1	196-547150100	5.1CH W/SCART W/O OPTICAL SIL. W/CARD SLOT VDE 230V SCART CONNECTION WIRE WITH POLYBAG (12" X 5" X 0.04) W/PRINTING PUNCH HOLE	PCS
2	201-003033760	POWER CORD VDE APP. 76" W/BUSHING TO 2 PIN HOUSING PITCH=8.0mm BLACK COLOUR	PCS
3	213-201280020	DVD MECHANISM (KHM-280AAA) SONY	PCS
4	214-821010200	DVD PLASTIC LOADER ASSEMBLY (WXD-8210) W/MOTOR FOR SONY KHM280 PICK-UP	PCS
5	303-000004020	CABLE TIE 4"	PCS
6	310-700000002	HEAT-SHRINKABLE UL APP. TUBE DIA 25mm LENGH 35mm	M
7	500-030803000	SCREW M3.0 X 8BT SELF-TAPPING NICHEL PLATE	PCS
8	500-031010000	SCREW T3 X 10WT SELF-TAPPING WASHER HEAD ?0.0mm	PCS
9	501-030502000	SCREW M3 X 5B/M MACHINE NICKEL PLATE	PCS
10	501-030603010	SCREW 3 X 6 K/M (BLACK)	PCS
11	501-030802000	SCREW M3 X 8B/M MACHINE NICKEL PLATE	PCS
12	501-031002000	SCREW 3 X 10 BM MACHINE NICKEL	PCS
13	501-031502000	SCREW 3 X 15 B/M MACHINE NICKEL	PCS
14	602-020010015	PAD CORD 20 X 10 X 1.5mmTHK	PCS
15	605-144000030	RUBBER FOOT DIA 14.4mm X 3mm SILICON WHITE COLOUR	PCS
16	720-022300000	DOOR LEFT SPRING WIRE DIA 0.3mm	PCS
17	720-022301000	DOOR RIGHT SPRING WIRE DIA 0.3mm	PCS
18	731-120301030	BACK PANEL 0.7mm THK. EG PLATE 5.1CH W/SCART W/O OPTICAL OUT W/BLACK S.S. W/O LICENCE	PCS
19	732-120300020	TOP COVER 0.6mm THK. EG PLATE SPRAY SILVER	PCS
20	733-120300003	BOTTOM TRAY 0.7mm THK. EG PLATE FOR DV-XXXF W/BRACKET	PCS
21	800-022301010	FRONT CABINET WITH CF CARD BRIGHT SILVER (A78-030) SPRAY W/D.GREY (PMS 432C) S.S	PCS
22	807-022300010	CD DOOR BRIGHT SILVER(A78-030)	PCS

Level	No.	Component Name	UM
		5.1CH W/SCART W/O OPTICAL SIL. W/CARD SLOT VDE 230V SPRAY	
23	824-022300010	POWER KNOB W/CHROME	PCS
24	825-022300011	FUNCTION KNOB W/CHROME	PCS
25	835-022302030	DISPLAY LENS (DV-223E) L.GREY LENS (921543L) W/SILVER (PMS 877C) ROADSTAR DESIGN	PCS
26	836-022301030	DOOR LENS(L.GREY LENS 921543L) W/SILVER (PMS 877C) S.S	PCS
27	844-020300000	MPEG PCB HOLDER ABS MOLD GREY	PCS
28	844-020301000	POWER PCB HOLDER ABS MOLD GREY	PCS
29	886-020300010	PLASTIC FOOT W/BRIGHT SILVER (A78-030) SPRAY	PCS
30	887-022300010	CD DOOR DECO W/CHROME	PCS
31	888-022300010	LEFT DECO W/CHROME	PCS
32	888-022301010	RIGHT DECO W/CHROME	PCS
33	901-022320120	GIFT BOX ROADSTAR DESIGN (DVD-2053S) "7621800023292"	PCS
34	902-022300060	INSTRUCTION MANUAL ROADSTAR DESIGN(DVD-2053S)5.1CH W/SCART (ENG/GER/FR/IT/SP/PORT)	PCS
35	903-030300110	WARRANTY CARD ROADSTAR DESIGN (MULTI-LANG) 2003 YR	PCS
36	906-468284003	CARTON SHEET 468 X 284 X 3mm	PCS
37	919-022301020	SERIAL NO. LABEL ROADSTAR DESIGN (DVD-2053S) "MRR00096700001"	PCS
38	919-030102010	LASER BEAM LABEL YELLOW B/G W/BLACK TEXT STD W/COATING	PCS
39	919-022303010	LASER CAUTION LABEL YELLOW B/G W/BLACK TEXT W/COATING HARVARD DESIGN (2004YR)	PCS
40	919-030399130	AC INPUT LABEL ROADSTAR DESIGN "AC 230V" 50HZ	PCS
41	919-030104010	CLASS 1 LABEL B/G W/BLACK TEXT W/COATING MULTI LANGUAGE STD	PCS
42	919-030303020	CAUTION LABEL ROADSTAR DESIGN	PCS
43	919-030314010	DATE CODE LABEL STANDARD "MMY"	PCS
44	920-022300030	RATING LABEL ROADSTAR DESIGN (DVD-2053S)	PCS
45	930-022301000	POLYFOAM (FRONT)	PCS
46	930-022302000	POLYFOAM(LEFT)	PCS
47	930-022303000	POLYFOAM(RIGHT)	PCS

Level	No.	Component Name	UM
		5.1CH W/SCART W/O OPTICAL SIL. W/CARD SLOT VDE 230V	
48	960-100504010	POLYBAG(10"x5")	PCS
49	960-120504010	POLYBAG (12" X 5" X 0.04)	PCS
		W/PRINTING PUNCH HOLE	
50	960-151004010	POLYBAG 15" X 10" OPEN	PCS
		W/HOLES W/RECYCLE MARK	
51	960-172004010	POLYBAG (17" X 20" OPEN)	PCS
		W/HOLES W/PRINTING	
52	D01-020301023	MPEG BOARD ASS'Y 5.1CH VT7208 (SERVO) + ES6018 (MPEG)	PCS
		W/SCART FOR DV-203/213/223E	
0,1	100-203E41340	MAIN PCB VT7208+ES6018 DV-203E	PCS
0,2	101-082241224	I.C. T224162B (SOJ-40) 256Kx16 DRAM (TM)	PCS
0,3	101-082402096	I.C. AT24C02N-10SI-2.7	PCS
0,4	101-082880096	I.C. AT49F8192AT-70TC 8M	PCS
0,5	101-082911217	I.C. A290011TL-70(PLCC-32) AMIC 1M FLASH	PCS
0,6	101-083472073	I.C. TL3472 (SOP-8) OP. AMP. (TI)	PCS
0,7	101-084162229	I.C. 4MX16T2-7 SDRAM	PCS
0,8	101-084558022	I.C. C4558D DUAL POERATON AMP S0-8	PCS
0,9	101-085654202	I.C. AT5654H (SMD)	PCS
0,1	101-086018068	**I.C. ES6018 (SMD)	PCS
0,11	101-087208079	I.C. VT7208S (LQFP-216)	PCS
0,12	101-087404031	I.C. 74HCU04D	PCS
0,13	101-088746221	I.C. WM8746 6CH AUDIO DAC	PCS
0,14	101-098860226	I.C. FS8860-CJ (SOT-223)	PCS
0,15	102-003904001	TRANSISTOR 3904 (SOT-23) SMD	PCS
0,16	102-003906001	TRANSISTOR 3906 PNP (SOT-23) SMD	PCS
0,17	102-008050001	TRANSISTOR IMTX8050 NPN (SOT-23) SMD	PCS
0,18	102-008550001	TRANSISTOR 8550 PNP (SOT-23) SMD	PCS
0,19	102-009014001	TRANSISTOR 9014C SOT23	PCS
0,2	102-021132001	TRANSISTOR 2SB1132 SOT-346 SMD	PCS
0,21	102-063018000	TRANSISTOR 2SK3018	PCS
0,22	104-134001010	DIODE 1N4001	PCS
0,23	104-144148080	DIODE IN4148 SMD LL-34	PCS
0,24	104-410056010	ZENER DIODE 5.6V 1/2W	PCS

Level	No.	Component Name	UM
		5.1CH W/SCART W/O OPTICAL SIL. W/CARD SLOT VDE 230V	
0,25	113-000274200	27MHz CRYSTAL HC-49/US FUND LP-3.5-27-000F-20	PCS
0,26	113-338005000	CRYSTALS 33.8688 MHz HC-49US LC=16PF	PCS
0,27	117-101302300	**COIL 10uH (SMD 0603)	PCS
0,28	117-124102300	COIL 2.4UH ±5% (SMD 0603)	PCS
0,29	130-015603100	RESISTOR CF 56 OHM 1/4W ±5%	PCS
0,3	130-100003840	RESISTOR 0 1/16W ±5% (SMD 0603)	PCS
0,31	130-100103840	RESISTOR 1 1/16W ±5% (SMD 0603)	PCS
0,32	130-100113840	RESISTOR 10 1/16W ±5% (SMD 0603)	PCS
0,33	130-100123840	RESISTOR 100 1/16W ±5% (SMD 0603)	PCS
0,34	130-100133840	RESISTOR 1K 1/16W ±5% (SMD 0603)	PCS
0,35	130-100143840	RESISTOR 10K OHM 1/16W ±5% (SMD 0603)	PCS
0,36	130-100153840	RESISTOR 100K 1/16W ±5% (SMD 0603)	PCS
0,37	130-100163840	RESISTOR 1M 1/16W ±5% (SMD 0603)	PCS
0,38	130-100173840	RESISTOR 10M 1/16W ±5% (SMD 0603)	PCS
0,39	130-100233840	RESISTOR 2K 1/16W ±5% (SMD 0603)	PCS
0,4	130-101523840	RESISTOR 1.5K 1/16W ±5% (SMD 0603)	PCS
0,41	130-101833840	RESISTOR 18K 1/16W ±5% (SMD 0603)	PCS
0,42	130-102213840	RESISTOR 220 1/16W ±5% (SMD 0603)	PCS
0,43	130-102223840	RESISTOR 2.2K 1/16W ±5% (SMD 0603)	PCS
0,44	130-102233840	RESISTOR 22K 1/16W ±5% (SMD 0603)	PCS
0,45	130-102703840	RESISTOR 27 OHM 1/16W ±5% (SMD 0603)	PCS
0,46	130-102713840	RESISTOR 270 1/16W ±5% (SMD 0603)	PCS
0,47	130-102723840	RESISTOR 2.7K 1/16W ±5% (SMD 0603)	PCS

Level	No.	Component Name	UM
		5.1CH W/SCART W/O OPTICAL SIL. W/CARD SLOT VDE 230V	
0,48	130-103303840	RESISTOR 33 1/16W ±5% (SMD 0603)	PCS
0,49	130-103313840	RESISTOR 330 1/16W ±5% (SMD 0603)	PCS
0,5	130-103323840	RESISTOR 3.3K 1/16W ±5% (SMD 0603)	PCS
0,51	130-104703840	RESISTOR 47 1/16W ±5% (SMD 0603)	PCS
0,52	130-104713840	RESISTOR 470 1/16W ±5% (SMD 0603)	PCS
0,53	130-104723840	RESISTOR 4.7K 1/16W ±5% (SMD 0603)	PCS
0,54	130-104733840	RESISTOR 47K 1/16W ±5% (SMD 0603)	PCS
0,55	130-105123840	RESISTOR 5.1K 1/16W ±5% (SMD 0603)	PCS
0,56	130-105613840	RESISTOR 560 1/16W ±5% (SMD 0603)	PCS
0,57	130-106223840	RESISTOR 6.2K 1/16W ±5% (SMD 0603)	PCS
0,58	130-106803840	RESISTOR 68 1/16W ±5% (SMD 0603)	PCS
0,59	130-106823840	RESISTOR 6.8K 1/16W ±5% (SMD 0603)	PCS
0,6	130-107503840	RESISTOR 75 OHM 1/16W ±5% (SMD 0603)	PCS
0,61	130-108223840	RESISTOR 8.2K 1/16W ±5% (SMD 0603)	PCS
0,62	130-109103840	RESISTOR 91 1/16W ±5% (SMD 0603)	PCS
0,63	130-130113840	RESISTOR 10 OHM X4 SMT Network Resistors (MNR14) 1/16W	PCS
0,64	130-130143840	RESISTOR 10K OHM X 4 1/16W ±5% (SMD 0603)	PCS
0,65	130-133303840	RESISTOR 33 OHM X 4 1/16W ±5% (SMD 0603)	PCS
0,66	130-134703840	RESISTOR 47 X 4 1/16W ±5% (SMD 0603)	PCS
0,67	140-401102323	CERAMIC CAP 10P 50V ±5% (SMD 0603)	PCS
0,68	140-401202323	CERAMIC CAP 100P 50V ±5% (SMD 0603)	PCS
0,69	140-401302283	CERAMIC CAP 1000P 50V ±10%	PCS

Level	No.	Component Name	UM
		5.1CH W/SCART W/O OPTICAL SIL. W/CARD SLOT VDE 230V (SMD 0603) X7R	
0,7	140-401402043	CERAMIC CAP 0.1u 50V +80-20% (SMD 0603) Y5V	PCS
0,71	140-401502283	CERAMIC CAP 10n 50V X7R +10% (SMD 0603)	PCS
0,72	140-401610183	CERAMIC CAP 1uF 16V ±10% (SMD 0603)	PCS
0,73	140-402202283	CERAMIC CAP 200p 50V X7R ±10% (SMD 0603)	PCS
0,74	140-412102283	CERAMIC CAP 120P 50V ±10% (SMD 0603)	PCS
0,75	140-415002323	CERAMIC CAP 15P 50V ±5% (SMD 0603)	PCS
0,76	140-415102283	CERAMIC CAP 150P 50V X7R ±10% (SMD 0603)	PCS
0,77	140-422002323	CERAMIC CAP 22p 50V NPO ±5% (SMD 0603)	PCS
0,78	140-427002323	CERAMIC CAP 27pF 50V NPO ±5% (SMD 0603)	PCS
0,79	140-427302143	CERAMIC CAP 0.027UF 50V ±10% (SMD 0603)	PCS
0,8	140-433202283	CERAMIC CAP 3300p 50V X7R ±10% (SMD 0603)	PCS
0,81	140-439102283	CERAMIC CAP 390P 50V NPO ±10% (SMD 0603) X7R	PCS
0,82	140-439202283	CERAMIC CAP 3900P 50V ±10% (SMD 0603)	PCS
0,83	140-447002323	CERAMIC CAP 47P 50V ±5% (SMD 0603)	PCS
0,84	140-447102283	CERAMIC CAP 470P 50V ±10% (SMD 0603) X7R	PCS
0,85	140-447302143	CERAMIC CAP 0.047uF 50V ±10% (SMD 0603)	PCS
0,86	140-468102283	CERAMIC CAP 680P 50V ±10% (SMD 0603)	PCS
0,87	140-468302143	CERAMIC CAP 0.068UF 50V ±10% (SMD 0603)	PCS
0,88	141-002204430	ELECT CAP 220uF 16V +80-20%	PCS
0,89	141-080104520	ELECT CAP 100uF 16V ±20% (6X7)	PCS
0,9	141-110105420	ELECT CAP 10uF 25V ±20%(4 X 7)	PCS
0,91	141-112204320	ELECT CAP 22UF 16V ±20% (4x7)	PCS
0,92	141-113304320	ELECT CAP 33UF 16V ±20% (4X7)	PCS
0,93	141-114707220	ELECT CAP 4.7UF 50V ±20% (4X7)	PCS

Level	No.	Component Name	UM
		5.1CH W/SCART W/O OPTICAL SIL. W/CARD SLOT VDE 230V	
0,94	141-144704320	ELECT CAP 47UF 16V ±20% (5X7)	PCS
0,95	182-352063B00	FERRITE BEAD(TB36-869568)	PCS
0,96	183-020601001	MBW1608-601 2.5A (0603) FERRITE BEAD	PCS
0,97	190-606538000	RCA JACK (RS-653A8-01) (RCA X 6)	PCS
0,98	190-630102000	VIDEO PORT+S-VIDEO(MDW-102/Y)	PCS
0,99	190-95AVGQ000	COAXIAL RCA SOCKET (AV+GQ-02) FOR DV-203	PCS
0,1	193-205020000	WAFER 5 PIN, 2mm PITCH (TRAY IN / OUT) STRAIGHT TYPE	PCS
0,101	193-206020000	WAFER 6P PITCH 2mm PITCH(CON6)	PCS
0,102	193-206025000	WAFER 6PIN 2.5MM PITCH (VFD) STRAIGHT TYPE	PCS
0,103	193-207020000	WAFER 7P PITCH 2.0mm	PCS
0,104	193-208025000	WAFER 8P 2.5mm PITCH (CON9) STRAIGHT TYPE	PCS
0,105	193-211020000	WAFER 11 PIN 2MM PITCH (SCART) STRAIGHT TYPE	PCS
0,106	193-226050900	FFC SOCKET PITCH=0.5mm 26P	PCS
0,107	193-240254000	WAFER 40P PITCH 2.54mm	PCS
53	D01-020307003	POWER SUPPLY ASS'Y EP35G-3.3 (NO EMI PARTS AND NO POWER SW) STD	PCS
54	D01-020309001	MEMORY CARD BOARD ASS'Y	PCS
0,1	100-203E42340	MEMORY CARD PCB	PCS
0,2	101-080374031	I.C. 74F374D	PCS
0,3	101-083125243	I.C. IDTQS3125-S1 QUICK SWITCH	PCS
0,4	101-087424073	I.C. 74LS244 (SO-20)	PCS
0,5	101-088860226	I.C. FS8860-3.3CJ (SOT-223)	PCS
0,6	102-520338164	P-CHANNEL MOSFET FDN338P (SOT-23)	PCS
0,7	130-100003840	RESISTOR 0 1/16W ±5% (SMD 0603)	PCS
0,8	130-100113840	RESISTOR 10 1/16W ±5% (SMD 0603)	PCS
0,9	130-100143840	RESISTOR 10K OHM 1/16W ±5% (SMD 0603)	PCS
0,1	130-102223840	RESISTOR 2.2K 1/16W ±5% (SMD 0603)	PCS
0,11	130-105123840	RESISTOR 5.1K 1/16W ±5%	PCS

Level	No.	Component Name	UM
		5.1CH W/SCART W/O OPTICAL SIL. W/CARD SLOT VDE 230V (SMD 0603)	
0,12	130-130143840	RESISTOR 10K OHM X 4 1/16W ±5% (SMD 0603)	PCS
0,13	140-401402043	CERAMIC CAP 0.1u 50V +80-20% (SMD 0603) Y5V	PCS
0,14	141-110105420	ELECT CAP 10uF 25V ±20%(4 X 7)	PCS
0,15	190-970001000	CF CONNECTOR TOP H=3.95mm (148-1111000-01)	PCS
0,16	190-970002000	4 IN 1 MEMORY CONNECTOR SMT /BOTTOM MOUNT (P5S2E930)	PCS
0,17	193-213020000	WAFER 13PIN 2.0mm PITCH (DIP)	PCS
0,18	193-240254000	WAFER 40P PITCH 2.54mm	PCS
55	D01-021304002	SCART PCB ASS'Y (DV-213B)	PCS
0,1	100-020305060	DV-203 SCART PCB (NEW)	PCS
0,2	190-300109000	SCART SOCKET 21P (CS-109)	PCS
0,3	193-211020000	WAFER 11 PIN 2MM PITCH (SCART) STRAIGHT TYPE	PCS
56	D01-022302007	DISPLAY PCB ASS'Y FOR DV-203E W/O POWER SW	PCS
0,1	100-203E01000	DV-203E DISPLAY PCB	PCS
0,2	101-080792220	I.C. S0792 (SGNEC) QFP-44 VFD DRIVERIC	PCS
0,3	104-134148010	DIODE SILICON IN4148	PCS
0,4	104-5300004A0	LED 2x5mm RED	PCS
0,5	105-010496080	DETECT SENSOR IRM 496V-S	PCS
0,6	130-010143000	RESISTOR CF 10K 1/8W ±5%	PCS
0,7	130-012233000	RESISTOR CF 22K 1/8W ±5%	PCS
0,8	130-018213000	RESISTOR CF 820 1/8W ±5%	PCS
0,9	140-001402000	CERAMIC CAP 0.1uF 50V +80-20%	PCS
0,1	140-003102200	CERAMIC CAP 30P 50V ±10%	PCS
0,11	141-000103520	ELECT CAP 100U 10V ±20%	PCS
0,12	161-09E050902	VFD (VFD20-0509A)	PCS
0,13	175-800005090	TACT SWITCH H=5mm (BLACK)	PCS
0,14	198-000003000	BARE WIRE (1 LBS=273M=4550 LBS PCS) 1PCS=60mm=0.00022 LBS DIA0.6mm	LBS
0,15	720-030300000	SPRING DIA 0.4mm	PCS
0,16	843-022300000	DISPLAY BRACKET-ABS MOLD.	PCS
57	D01-022303107	REMOTE PCB ASS'Y FOR DV-223E ROADSTAR	PCS
0,1	100-030013460	REMOTE PCB (FOR PT2222)	PCS
0,2	101-082222092	I.C. PT2222-001 (SMD)	PCS
0,3	102-008050002	NPN TRANSISTOR 8050 SORT BY	PCS

Level	No.	Component Name	UM
		5.1CH W/SCART W/O OPTICAL SIL. W/CARD SLOT VDE 230V ECB TO-92	
0,4	104-6003504I0	DIODE REMOTE RECEIVER(LED350B)	PCS
0,5	111-600455030	FILTER KBR-455B	PCS
0,6	130-010123000	RESISTOR CF 100 1/8W ±5%	PCS
0,7	130-014793000	RESISTOR CF 4.7 1/8W ±5%	PCS
0,8	140-015102200	CERAMIC CAP 150 pF 50V -+10%	PCS
0,9	141-004703320	ELECT CAP 47uF 10V ±20%	PCS
0,1	320-015030001	BATTERY (AA SIZE) R6 AA UM3 R6V 1.5V	PCS
0,11	611-020300010	RUBBER KEYPAD (32 KEY FOR I.C PT2222) MOULDED IN GREY (PMS 424C) W/WHITE S.S. STD	PCS
0,12	720-030000000	BATTERY SPRING "+-" DIA. 0.5 WIRE	PCS
0,13	720-030001000	BATTERY SPRING "-"	PCS
0,14	720-030002000	BATTERY SPRING "+"	PCS
0,15	836-030000331	REMOTE FRONT CABINET SPRAY IN BRIGHT SIL(A78-030) W/D.GREY (432C)S.S(DV223D/E) ROADSTAR	PCS
0,16	859-030000010	BOTTOM CABINET SPRAY IN BRIGHT SILVER(A78-030) WITHOUT S.S STD	PCS
0,17	860-030000010	BATTERY DOOR SPRAY BRIGHT SILVER (A78-030) STD	PCS
58	D01-022304012	CABLE WIRE ASS'Y W/SCART W/FERRITE FOR SONY DV-223E W/O POWER SW	PCS
0,1	194-000306010	PIN ASS'Y 6 PIN HOUSING TO HOUSING UL1007 #28 (L=200+5mm PITCH 2.0mm)	PCS
0,2	194-000406020	PIN ASS'Y 6 PIN HOUSING TO WIRE UL1007 #28 (L=130+5mm PITCH 2.5mm)	PCS
0,3	194-000508020	PIN ASS'Y 8 PIN HOUSING TO HOUSING UL1007#28 (L=360mm PITCH 2.5mm)	PCS
0,4	194-003811010	PIN ASS'Y 11 PIN HOUSING TO HOUSING UL2468 #26 (L=180mm PITCH=2.0mm)	PCS
0,5	194-004105010	PIN ASS'Y 5 PIN HOUSING TO HOUSING UL2468 #26 (L=300mm PITCH 2.0mm)	PCS
0,6	194-004304010	PIN ASS'Y 4 PIN HOUSING TO	PCS

Level	No.	Component Name	UM
		5.1CH W/SCART W/O OPTICAL SIL. W/CARD SLOT VDE 230V WIRE UL2468 #26 (L=130+5mm PITCH 2.0mm)	
0,7	194-006340020	PIN ASS'Y 40PIN HOUSING TO HOUSING IDE CABLE L=150mm P=2.54mm	PCS
0,8	194-007012010	PIN ASS'Y 7P+5P HOUSING TO 12P HOUSING (L=200mm P=2.0mm)	PCS
0,9	199-2685304E0	FILM FLAT CABLE 26PINS P=0.5mm L=4+300+4mm	PCS