

# Service Document **Exchange Set**

## **MPAXX MP650/512MB**

**Service  
Manual**Sicherheit  
SafetyMaterialnr./Part No.  
720108000001

Es gelten die Vorschriften und Sicherheitshinweise gemäß dem Service Manual „Sicherheit“, Materialnummer 720108000001, sowie zusätzlich die eventuell abweichenden, landesspezifischen Vorschriften!



The regulations and safety instructions shall be valid as provided by the „Safety“ Service Manual, part number 720108000001, as well as the respective national deviations.

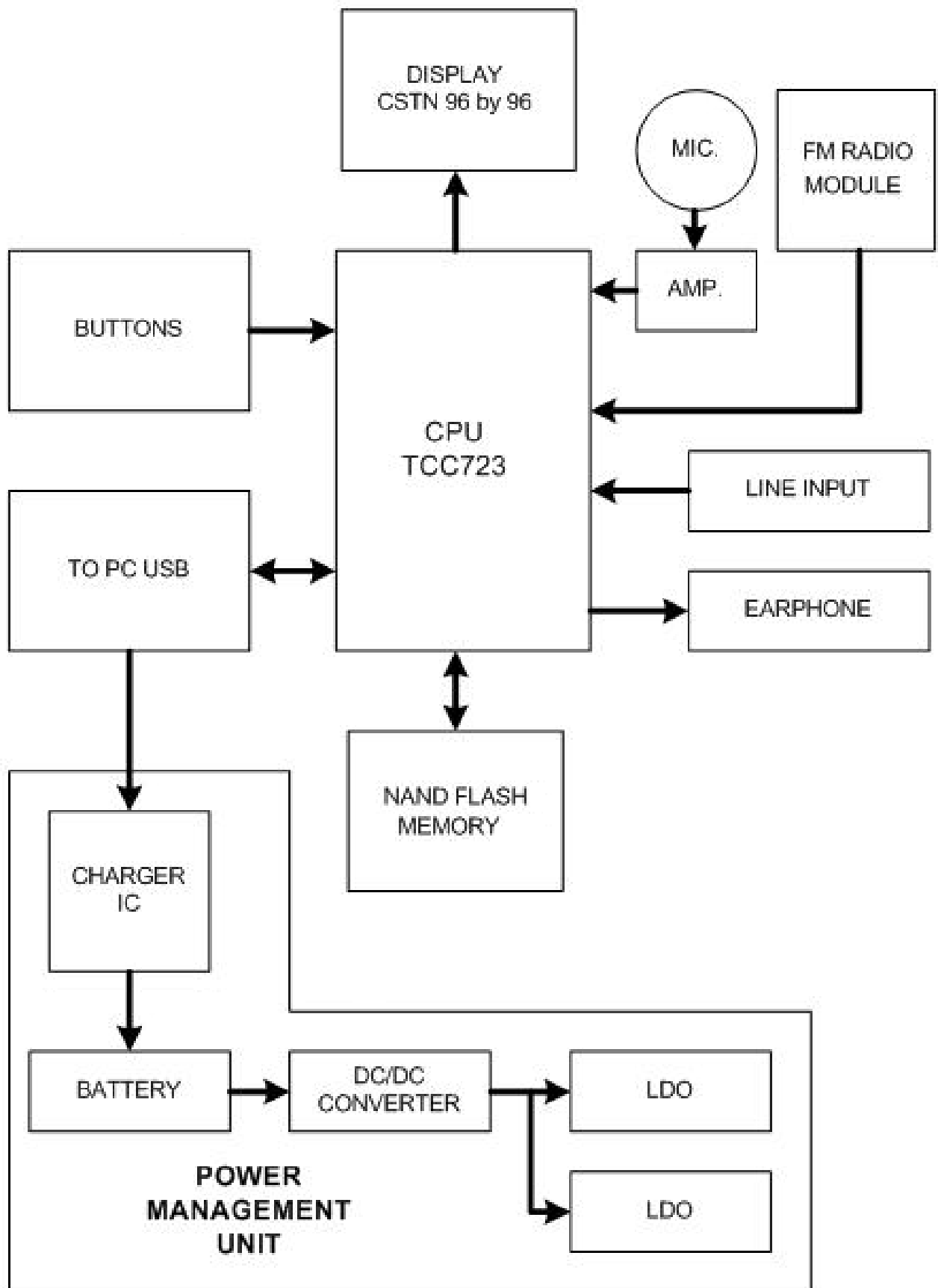
Dieses Service Dokument ist nur in Datenform verfügbar

This Service Document is only available as data

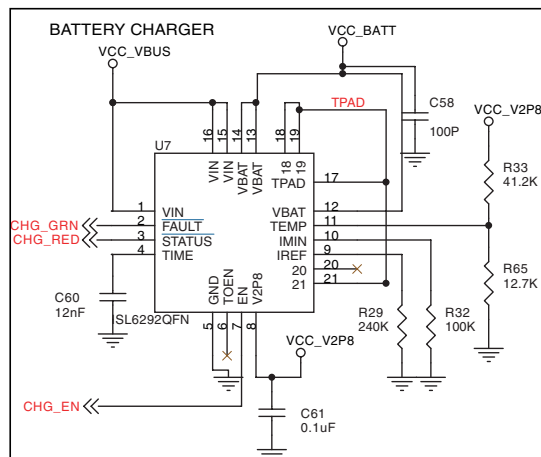
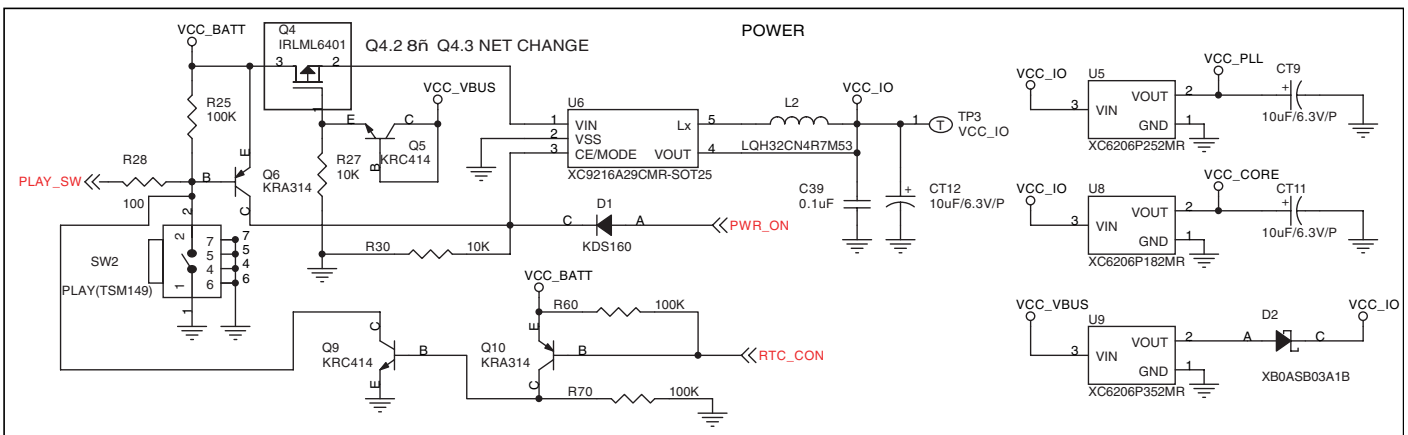
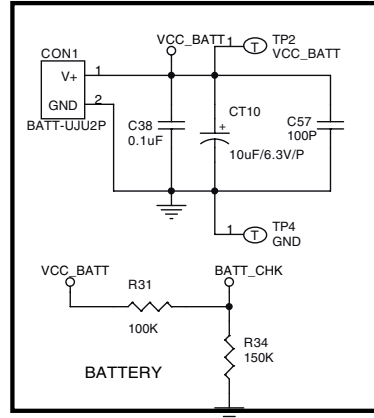
Änderungen vorbehalten/Subject to alteration

Made by GRUNDIG in Germany • TCC 0106 HH

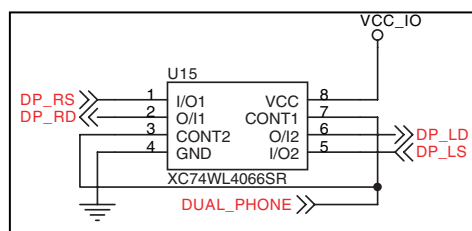
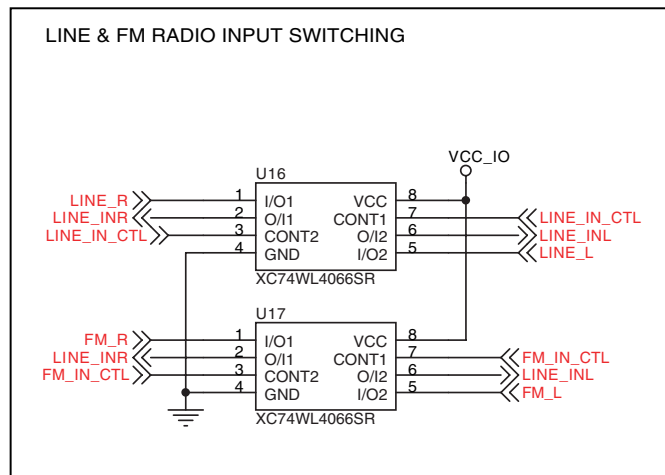
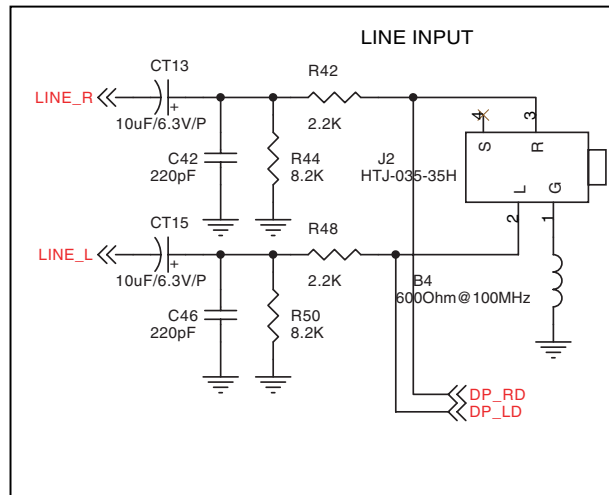
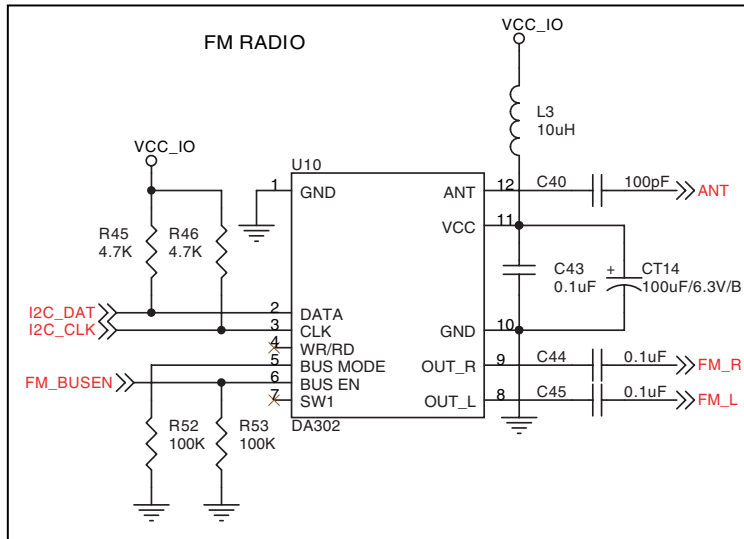
<http://www.grundig.com>



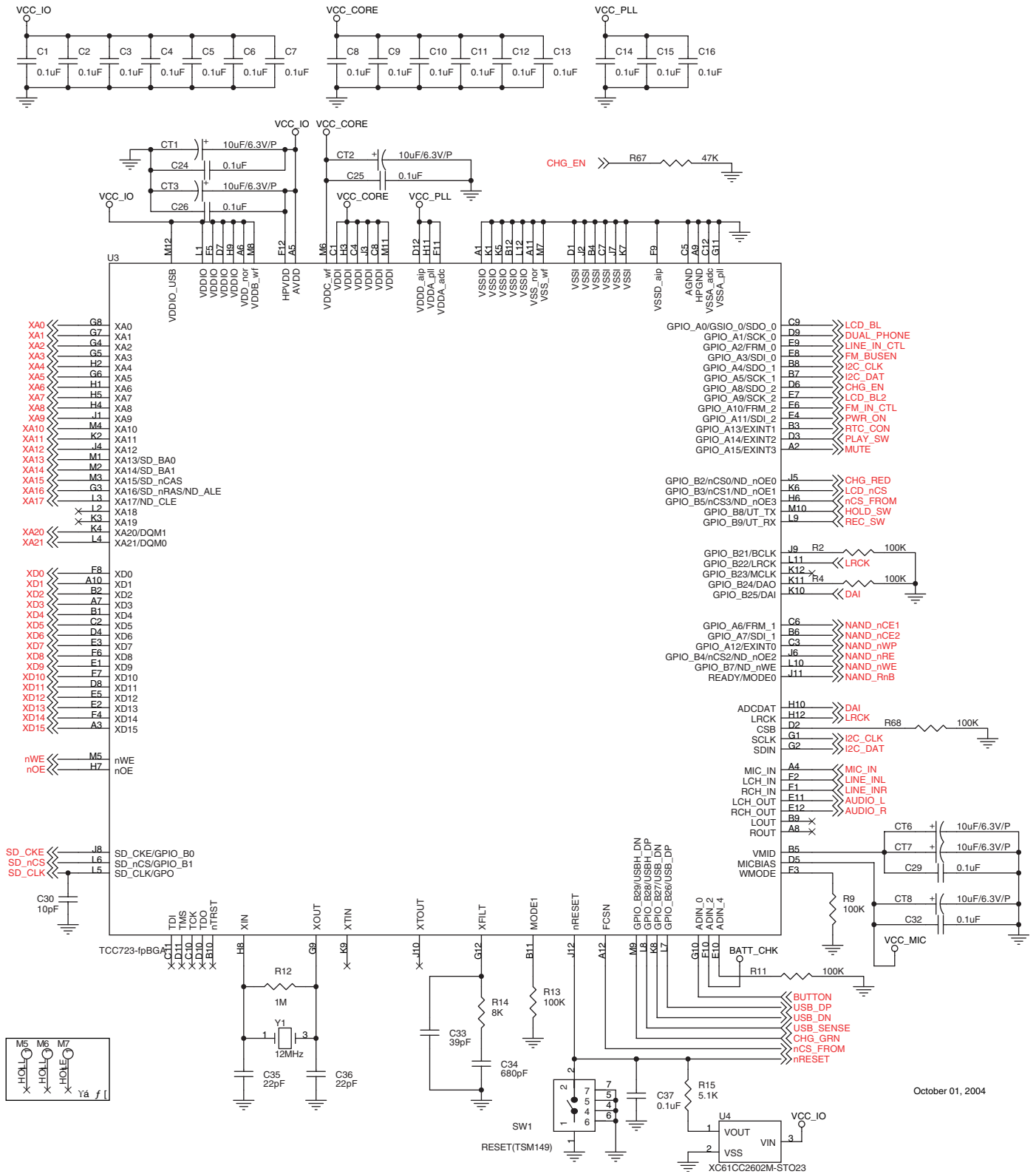
Für Geräte bis Seriennummer 8000  
 For sets until serial number 8000



Für Geräte bis Seriennummer 8000  
For sets until serial number 8000

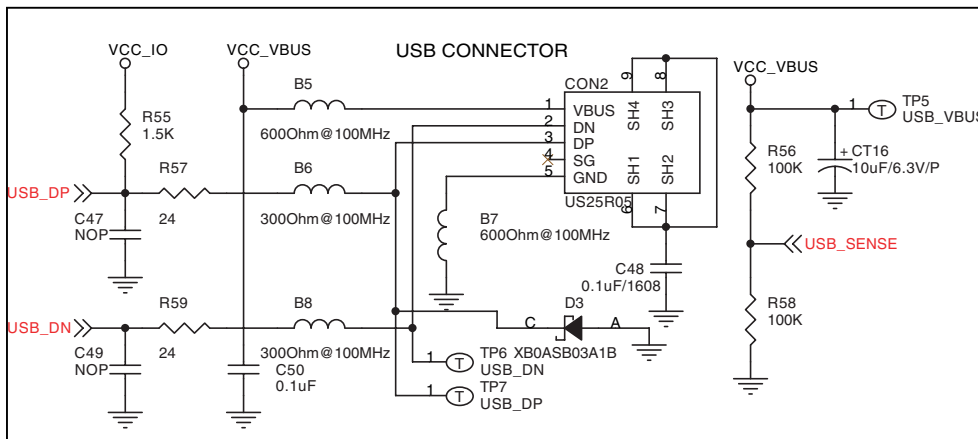
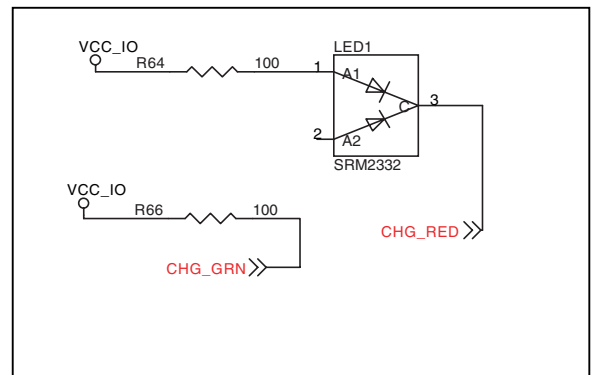
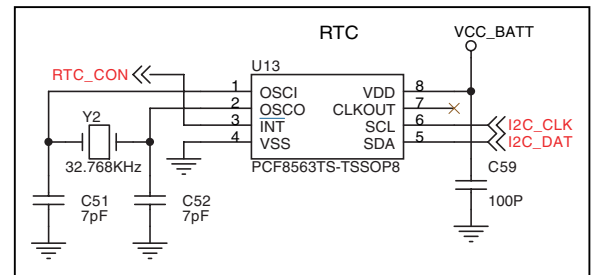
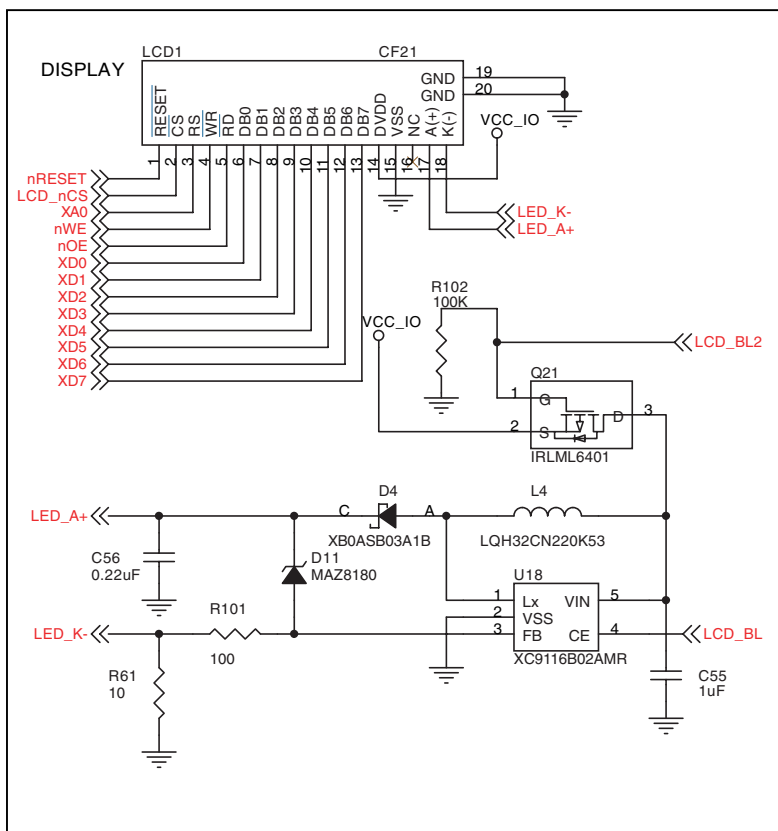
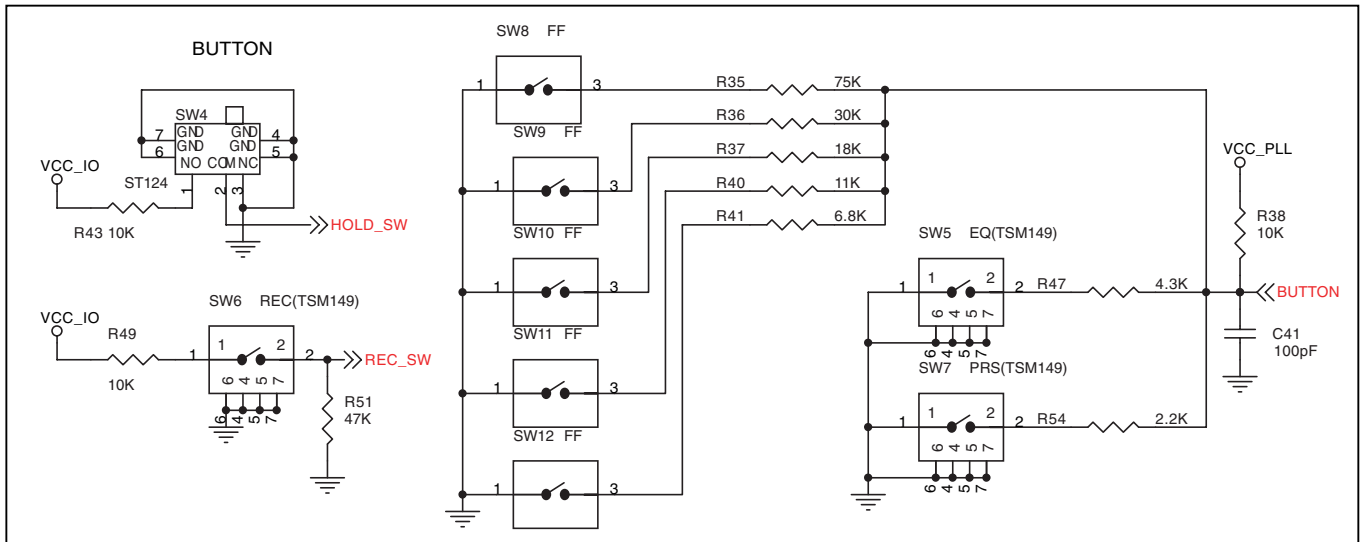


Für Geräte bis Seriennummer 8000  
For sets until serial number 8000



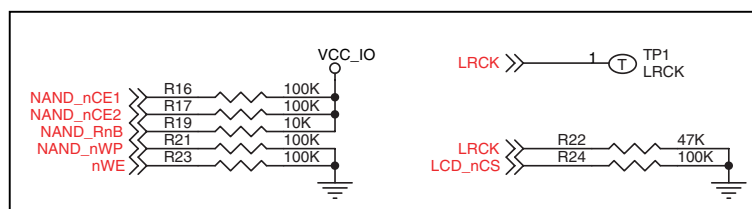
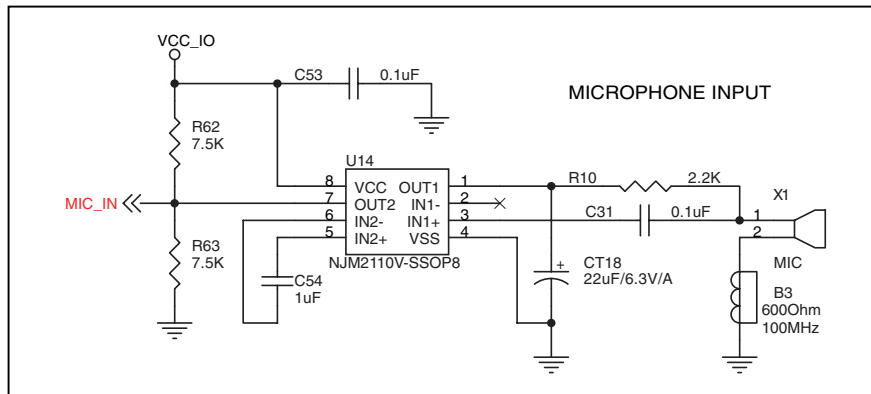
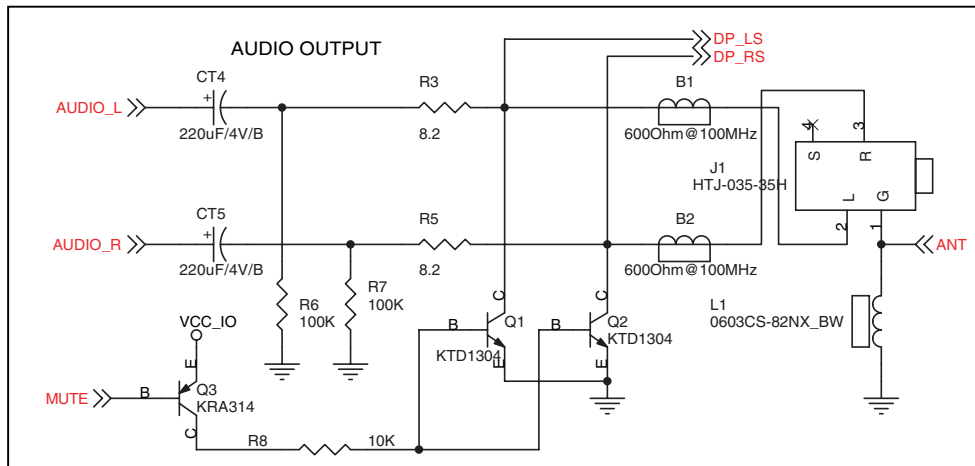
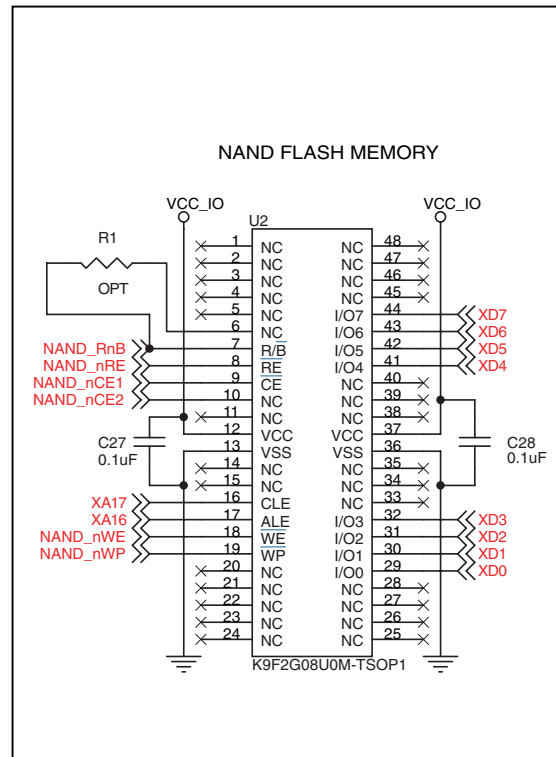
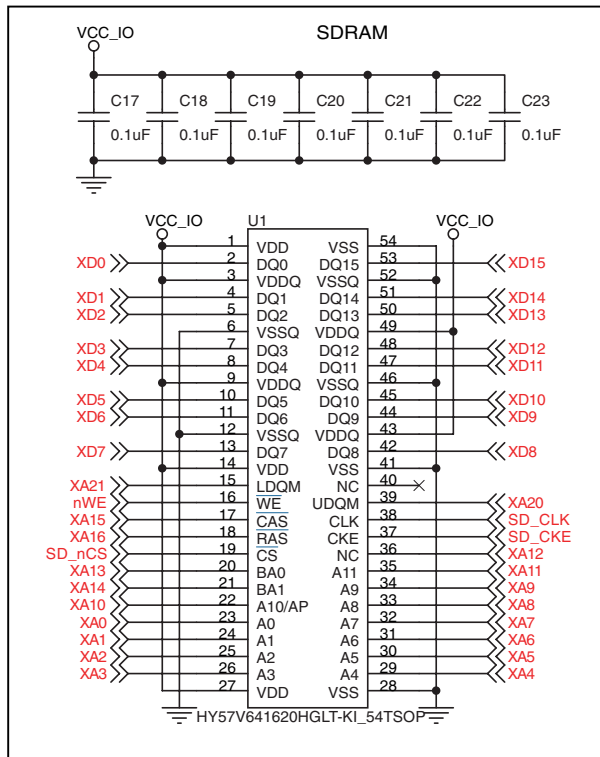
October 01, 2004

Für Geräte bis Seriennummer 8000  
For sets until serial number 8000



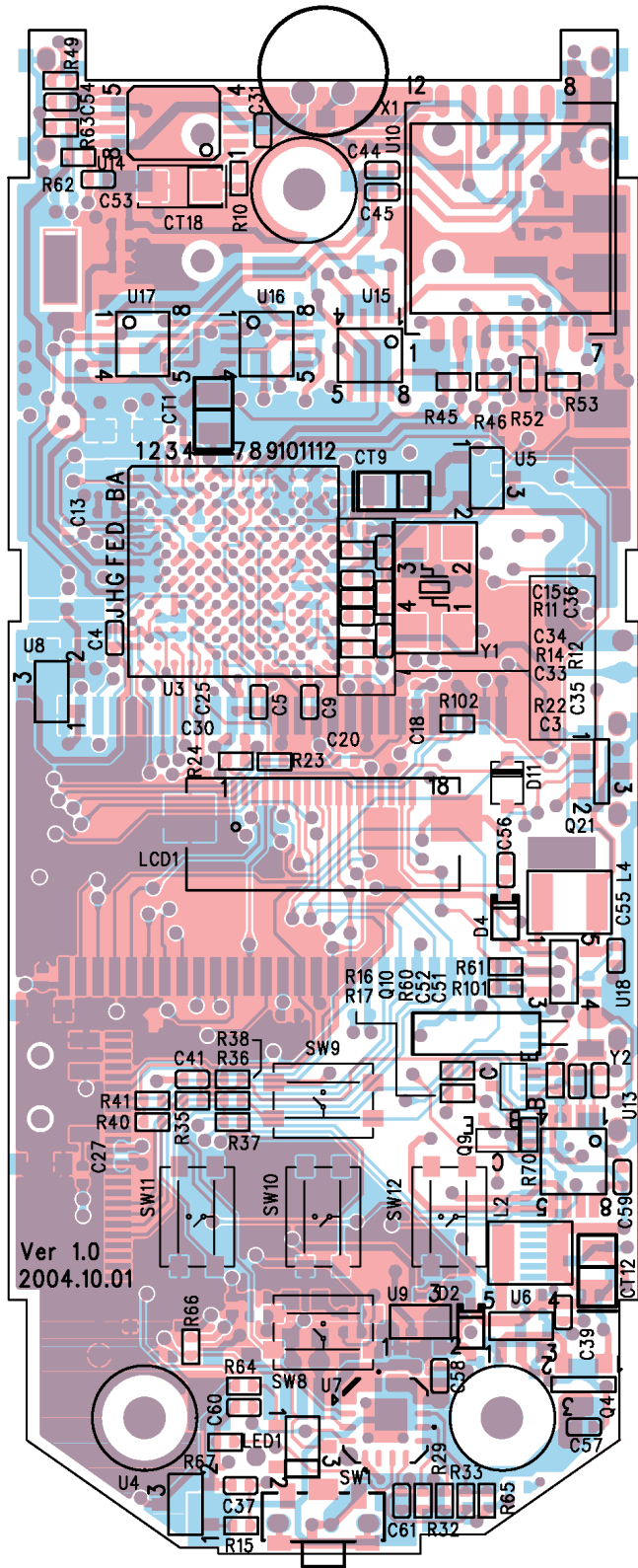
February 19, 2005

Für Geräte bis Seriennummer 8000  
For sets until serial number 8000

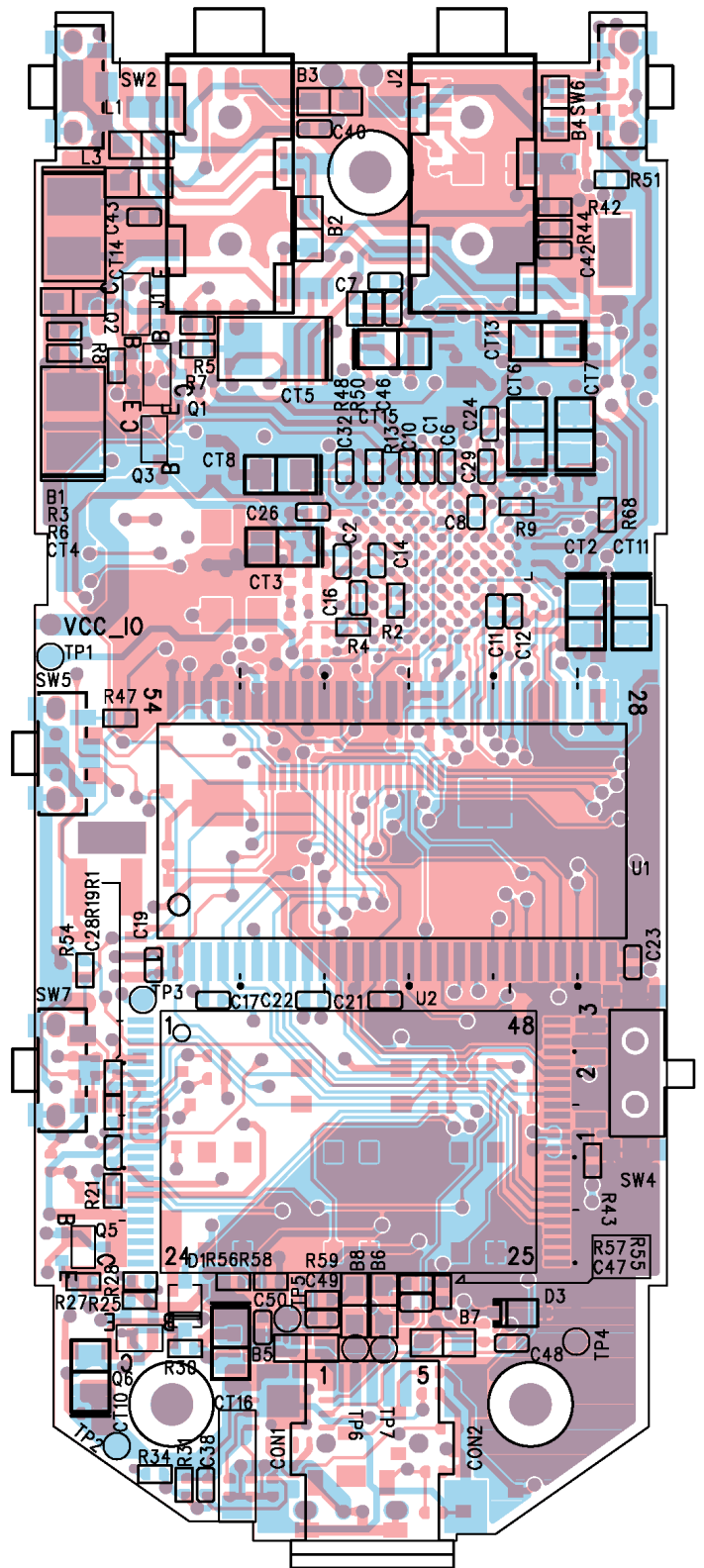


Für Geräte bis Seriennummer 8000  
For sets until serial number 8000

Ansicht auf Bestückungsseite (Layer Bestückungs- und Lötseite)  
View on component side (component and solder layer)

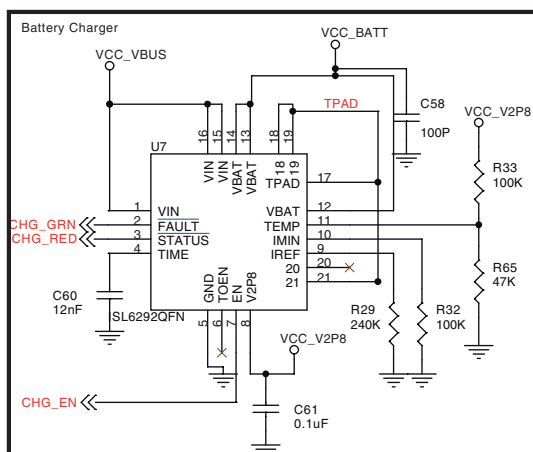
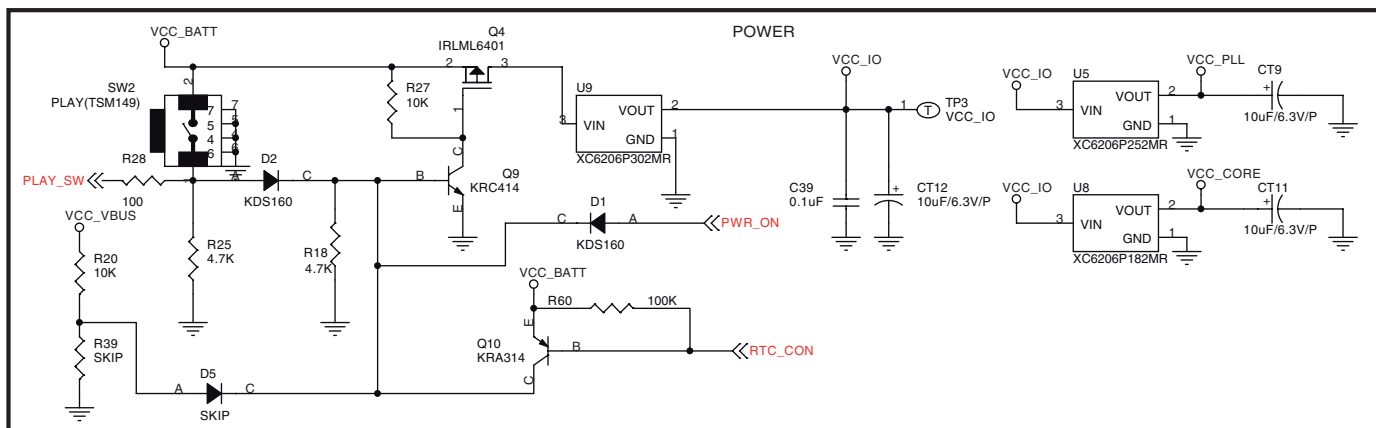
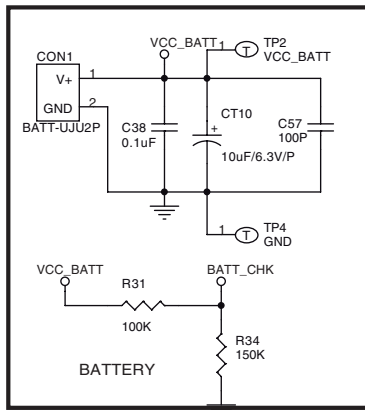


Ansicht auf Lötseite (Layer Bestückungs- und Lötseite)  
View on solder side (component and solder layer)

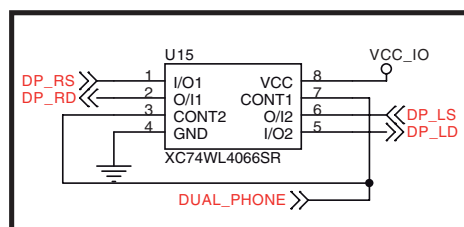
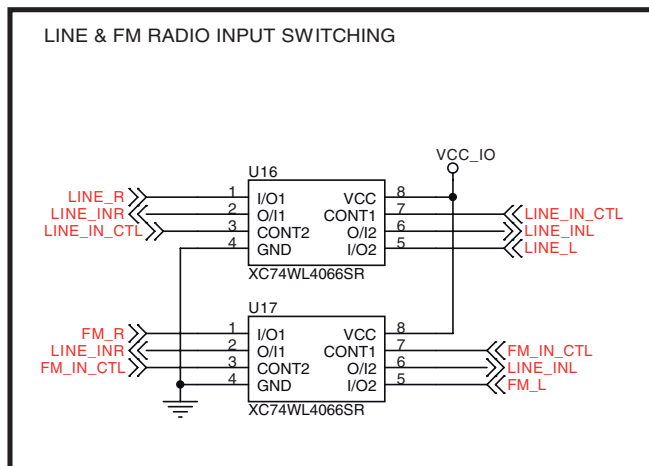
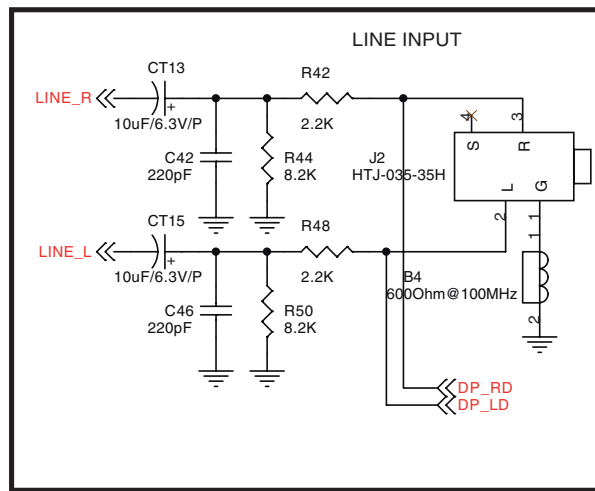
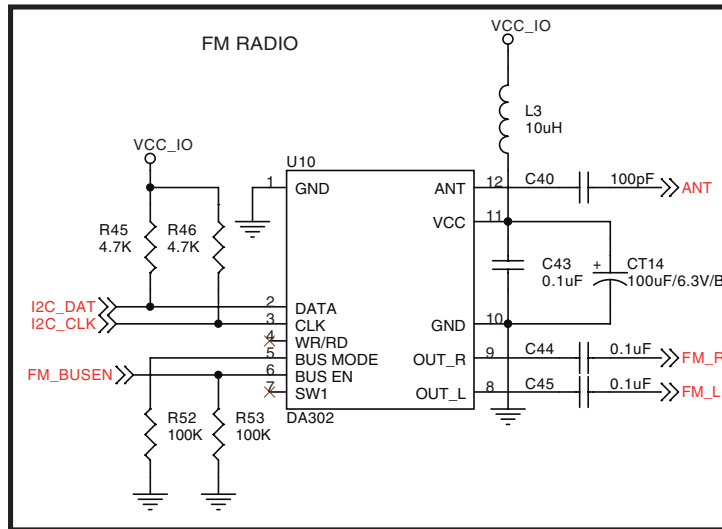




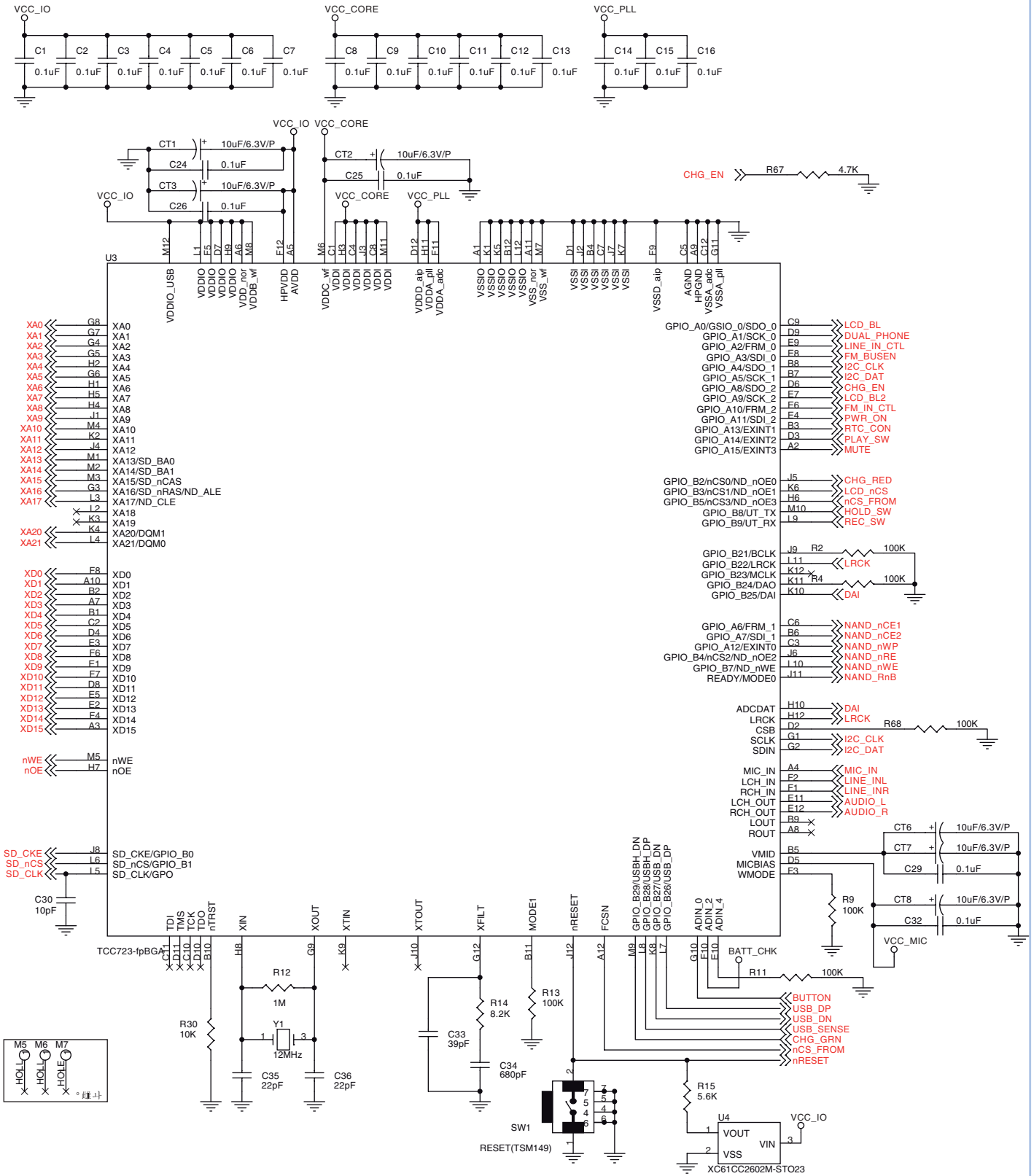
Für Geräte ab Seriennummer 8001  
 For sets from serial number 8001 on



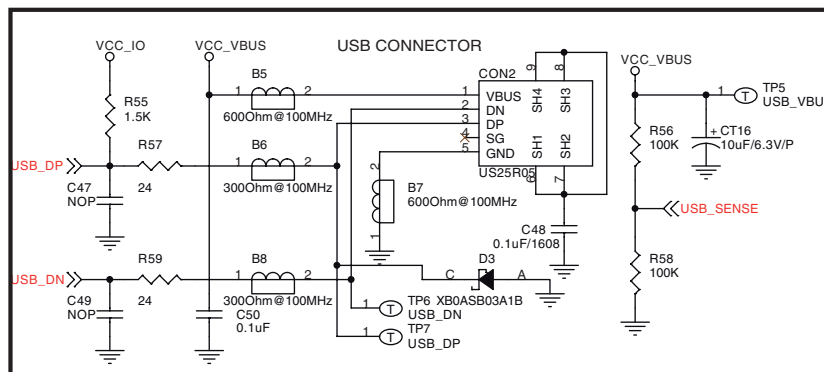
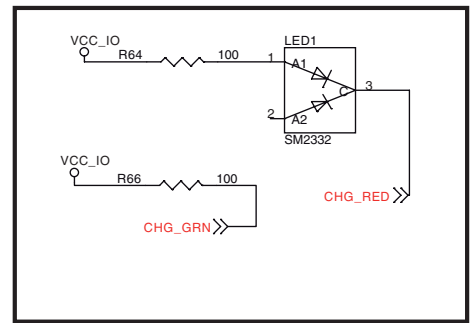
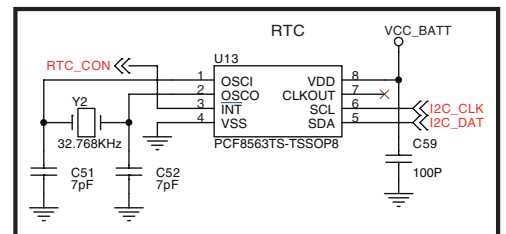
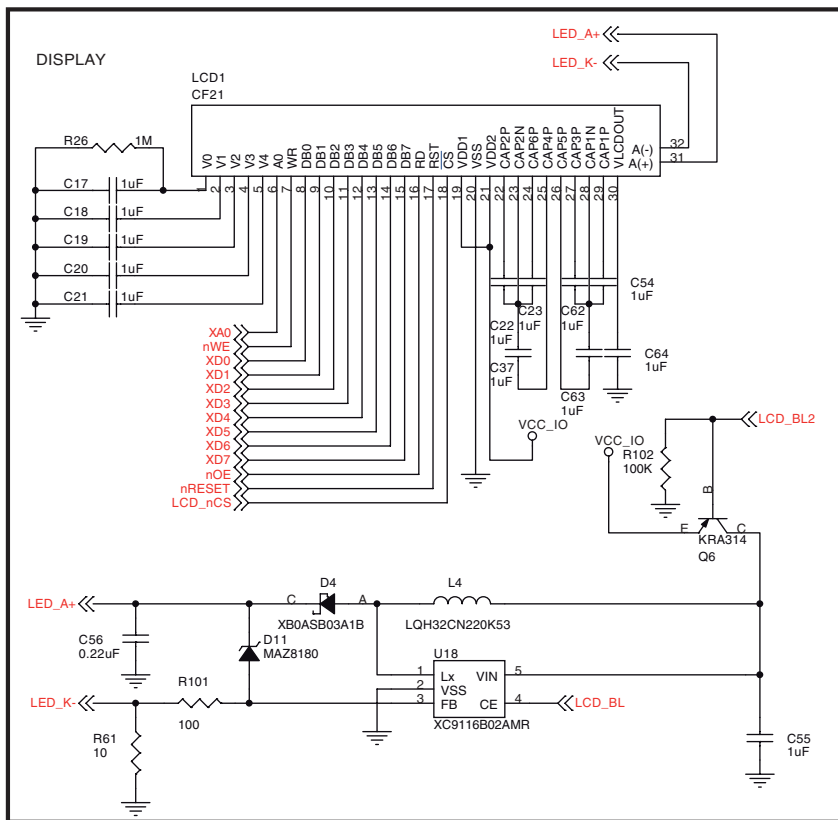
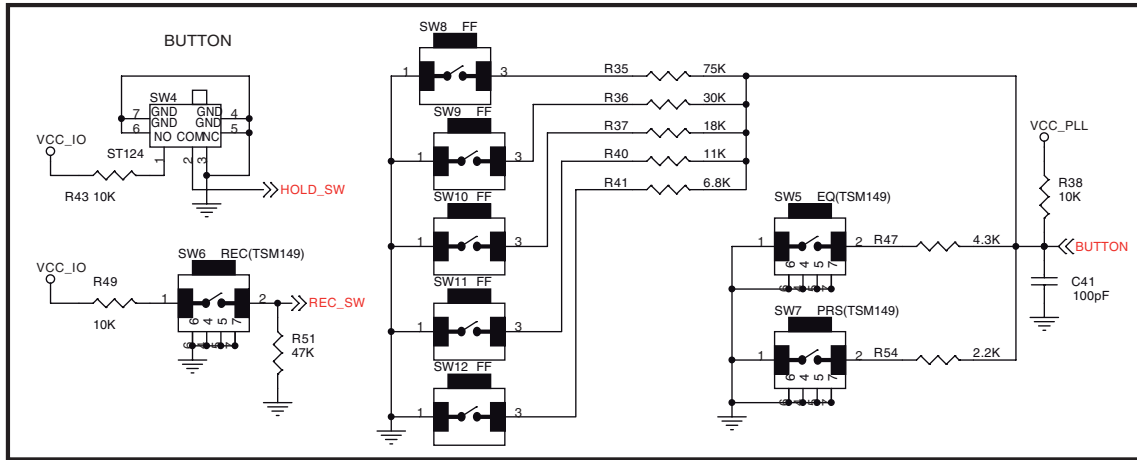
Für Geräte ab Seriennummer 8001  
 For sets from serial number 8001 on



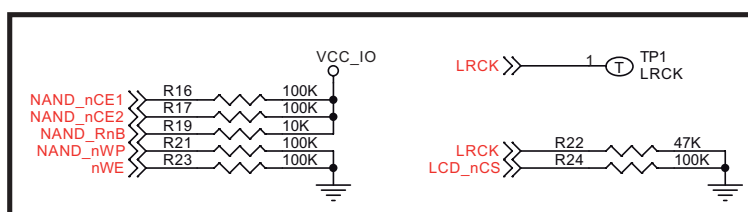
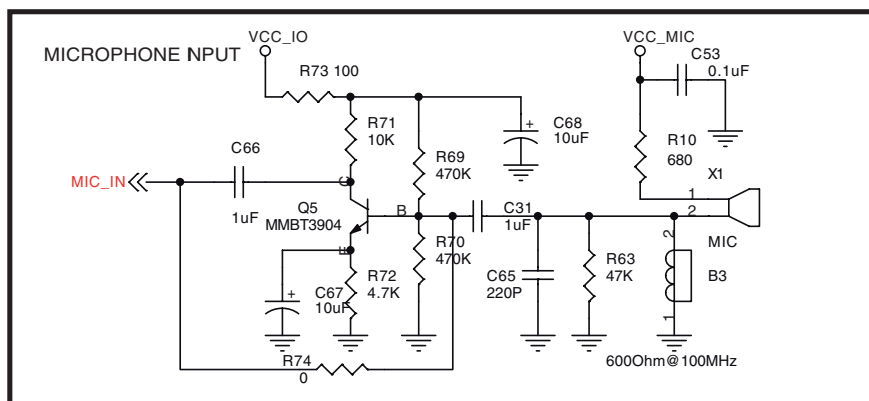
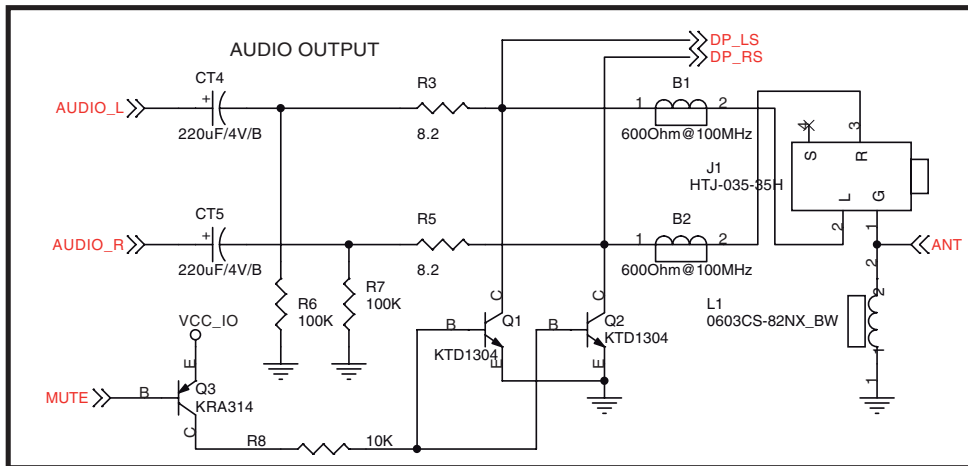
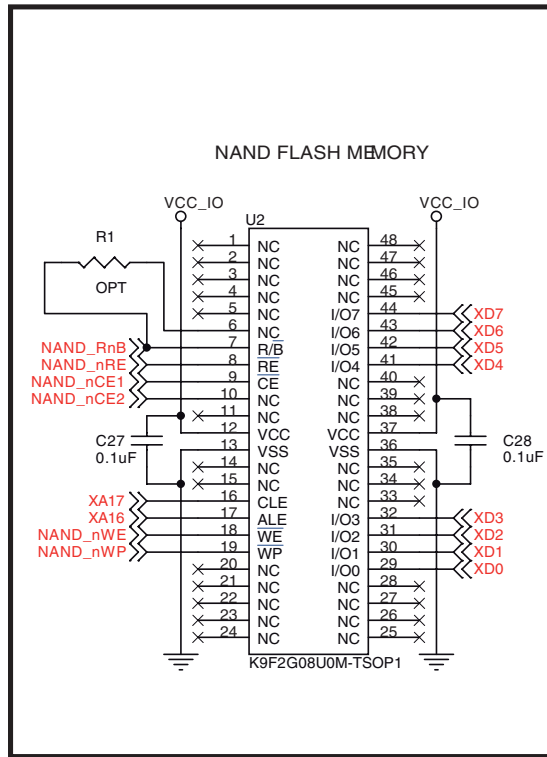
Für Geräte ab Seriennummer 8001  
For sets from serial number 8001 on



Für Geräte ab Seriennummer 8001  
 For sets from serial number 8001 on

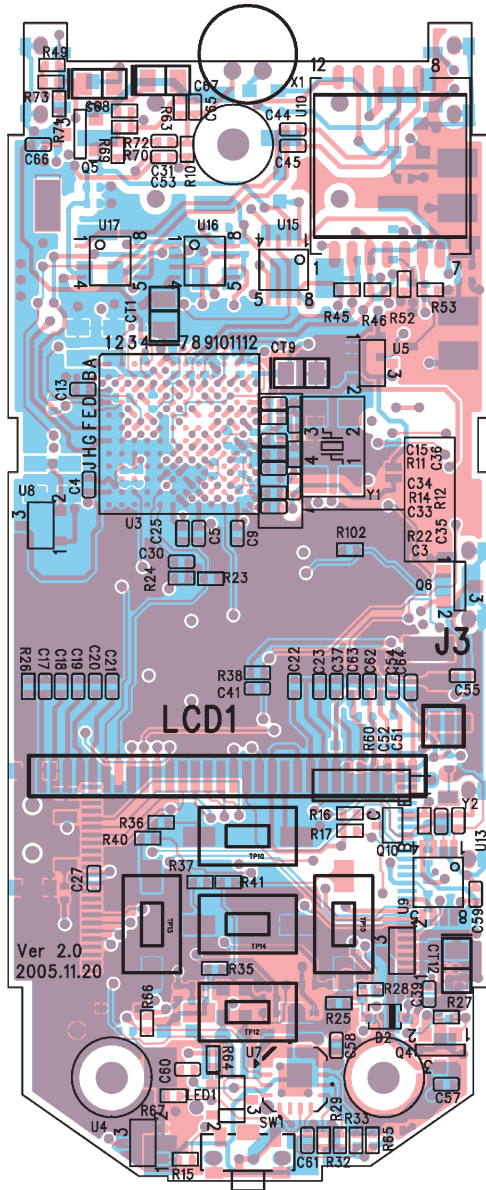


Für Geräte ab Seriennummer 8001  
 For sets from serial number 8001 on

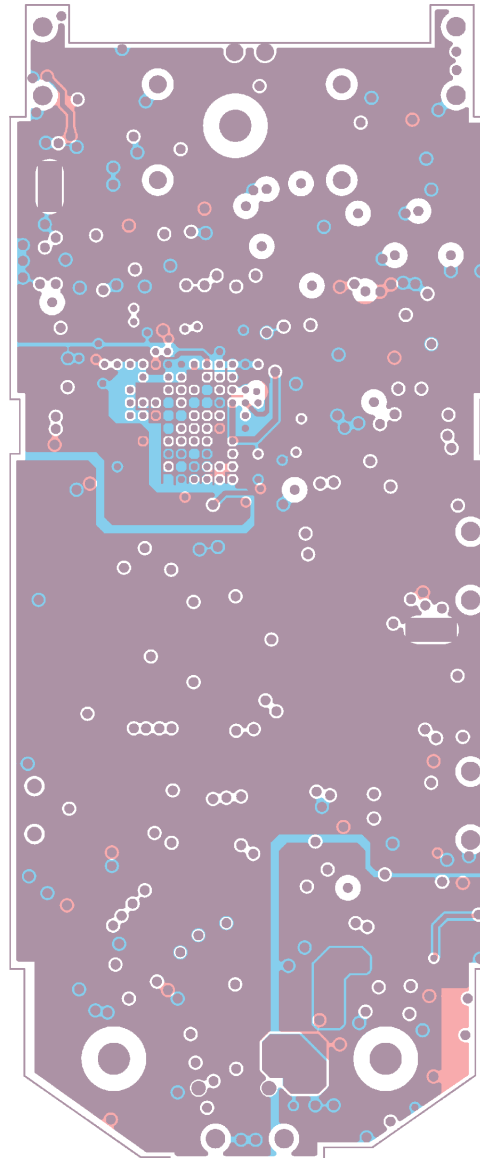


Für Geräte ab Seriennummer 8001  
For sets from serial number 8001 on

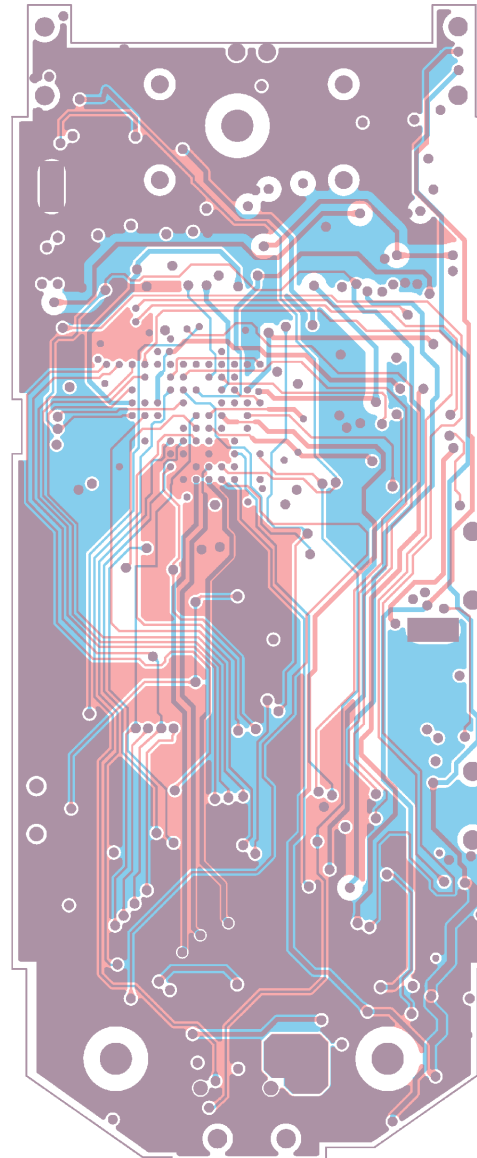
Ansicht auf Bestückungsseite (Layer Bestückungs- und Lötseite)  
View on component side (component and solder layer)



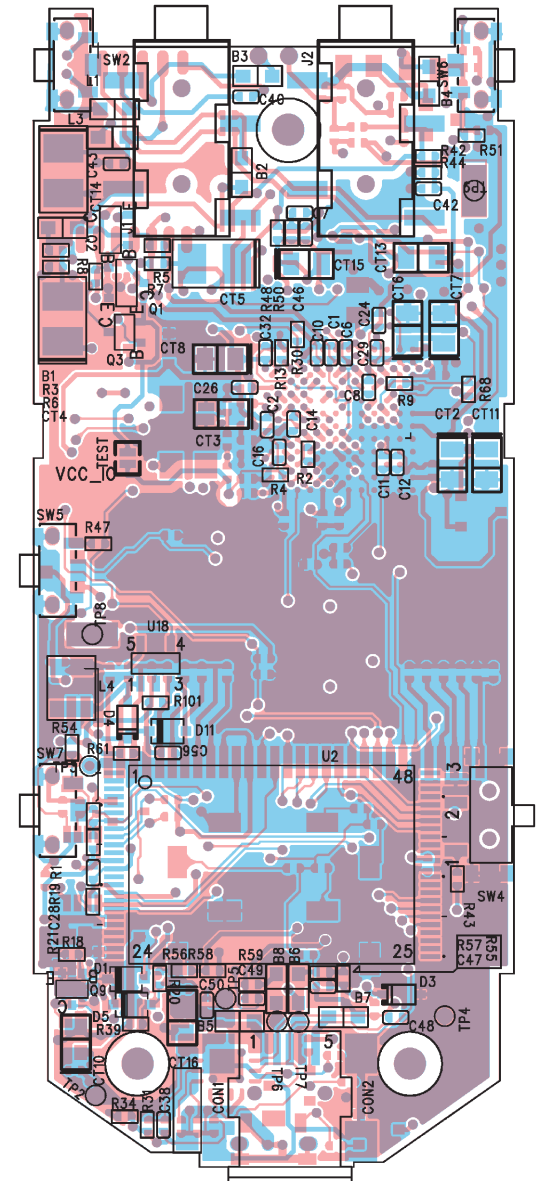
Ansicht auf Bestückungsseite (Layer Power und GND)  
View on component side (power and GND layer)



Ansicht auf Bestückungsseite (innere Layer 3 und 4)  
View on component side (inner layer 3 and 4)



Ansicht auf Lötseite (Layer Bestückungs- und Lötseite)  
View on solder side (component and solder layer)



## Ersatzteilliste Spare Parts List

## AUDIO

### 11 / 2005

### MPAXX - MP 650/512MB

BESTELL-NR. / ORDER NO.: GDR9600

POS. NR. POS. NO.	ABB. FIG.	MATERIAL-NR. PART NUMBER	ANZ. QTY.	BEZEICHNUNG 	DESCRIPTION 
		GDR9600		MPAXX - MP 650/512MB RED SILVE <b>TAUSCHGERAET</b>	MPAXX - MP 650/512MB RED SILVE <b>EXCHANGE SET</b>
		720114061000		BEDIENUNGSANLEITUNG D,GB,F,I,E,PL	INSTRUCTION MANUAL D,GB,F,I,E,PL

Es gelten die Vorschriften und Sicherheitshinweise gemäß dem Service Manual "Sicherheit", Mat.-Nummer 720108000001, sowie zusätzlich die eventuell abweichenden, landesspezifischen Vorschriften!



The regulations and safety instructions shall be valid as provided by the "Safety" Service Manual, part number 720108000001, as well as the respective national deviations.

ÄNDERUNGEN VORBEHALTEN / SUBJECT TO ALTERATION