

Service Document **Exchange Set**

RRC D 2420 MP3

Service Manual
Sicherheit
Safety
Materialnr./Part No. 720108000001



Es gelten die Vorschriften und Sicherheitshinweise gemäß dem Service Manual "Sicherheit", Materialnummer 720108000001, sowie zusätzlich die eventuell abweichenden, landesspezifischen Vorschriften!



The regulations and safety instructions shall be valid as provided by the "Safety" Service Manual, part number 720108000001, as well as the respective national deviations.

ALIGNMENT PROCEDURE

INSTRUMENTS REQUIRED

1. Signal Generator
2. FM Signal Generator
3. FM/AM IF Sweep Generator (10.7 MHz for FM)
4. VTVM
5. Oscilloscope
6. Frequency counter
7. Regulated DC power supply

GENERAL PREPARATION

1. Check source voltage, DC or AC according to specifications
2. Set function switch to band being aligned
3. Signal input should be kept as low as possible to avoid AGC and AFC function
4. Standard modulation :
 - AM 1 KHz 30% mod
 - FM 1 KHz 22.5 KHz dev

AM IF ALIGNMENT

STEP	SIGNAL SOURCE (AM RF Gen.) CONNECT TO	SET SIGNAL TO	ALIGNMENT INDICATOR (Oscilloscope, VTVM) CONNECT TO	SET RADIO DIAL TO	ADJUST	ADJUST FOR	REMARKS
1	A standard radiation loop	450KHz	TP3 Detector output terminal and ground (TP4)	Quiet Point	T601	Maximum	Volume control at min. position
2	Repeat step 1 for max. output						

FM IF ALIGNMENT

This model requires no FM IF alignment as the IF is fixed by ceramic filter and discriminator CF502 or CF503 & CF505. Please take note that correct type and same color dot of ceramic filter is used in servicing, diff color dot of ceramic filter may cause worse IF 'S' curve characteristic and distortion.

Connect IF genescope output terminal to TP3 & TP4 (GND) in series with a 1000Pf capacitor, connect scope input terminal to TP1 & TP2 (GND), then the IF characteristic curve can be observed.

FM RF ALIGNMENT

STEP	SIGNAL SOURCE (FM Signal Gen.) CONNECT TO	SET SIGNAL TO	ALIGNMENT INDICATOR (Oscilloscope, VTVM) CONNECT TO	SET RADIO DIAL TO	ADJUST	ADJUST FOR	REMARKS
1	TP1 & TP2 through matching network if necessary	87.5 MHz (modulated)	Terminals across speaker voice coil	87.5 MHz (Lowest end)	NA	NA	Digital DC Volt meter is Connected to TP 5 and grg
2		108 MHz (modulated)		108 MHz (Highest end)	L604 (Osc. Coil) stretch or squeeze	DC 8V ±0.3V	
3		88 MHz (modulated)		88 MHz	L601 (RF coil) stretch or squeeze	Maximum	Volume control at max. position
4		106 MHz (modulated)		106 MHz	TC 601 (RF trimmer)		
5	Repeat steps 3 and 4 as necessary to minimize tracking error and also steps 1 and 2 if necessary						

AM RF ALIGNMENT

STEP	SIGNAL SOURCE (AM Signal Gen.) CONNECT TO	SET SIGNAL TO	ALIGNMENT INDICATOR (Oscilloscope, VTVM) CONNECT TO	SET RADIO DIAL TO	ADJUST	ADJUST FOR	REMARKS
1	A standard radiation loop ant.	522 KHz (modulated)	Across speaker voice coil	522 KHz (Lowest end)	NA	NA	Digital DC Volt meter is Connected to TP 5 and grg
2		1620 KHz (modulated)		1620 KHz (Highest end)	L 605 (Osc.Coil)	DC 8V ±0.3V	
3		603 KHz (modulated)		603 KHz	L 603 (ant. coil)	Maximum	Volume control at max. position
4		1404 KHz (modulated)		1404 KHz	TC 603 (ant. trimmer)		
5	Repeat steps 3 and 4 as necessary to minimize tracking error and also steps 1 and 2 if necessary						

ALIGNMENT PROCEDURE FOR CD SECTION

Applicable unit :

- 1 This model is using CD drive unit No. SANYO DA11B3V
- 2 The alignment for CD section is fully automatic and no adjustment is required

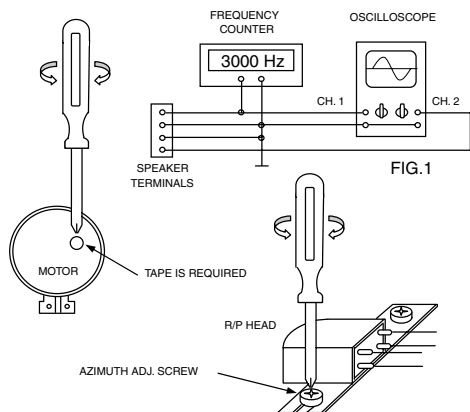
GENERAL PREPARATION - 1) Check source voltage, DC or AC according to specifications .

2) Set function switch to Tape being aligned .

A) MEASURING INSTRUMENTS REQUIRED FOR TAPE SPEED AND HEAD AZIMUTH ADJUSTMENT.

(1) TAPE SPEED ADJUST

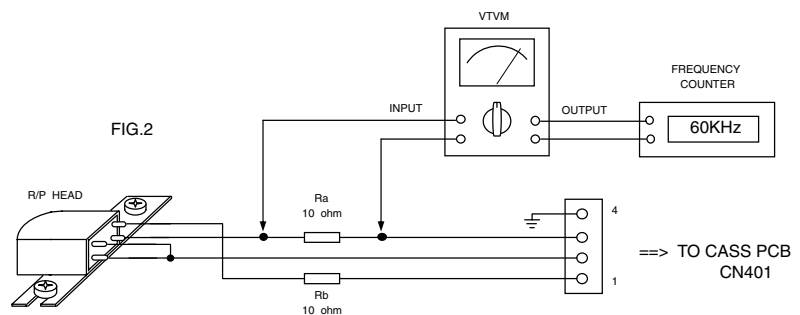
MTT-111 (3000 Hz) TEST °



(2) HEAD AZIMUTH ADJUSTMENT .

- 2.1 - Connect the equipments as shown in the Fig. 1. (The Both Speakers loading Are Required)
- 2.2 - Insert a test tape (10 KHz : MTT-114) into deck.
- 2.3 - Press PLAY and set VOLUME at reference output.
- 2.4 - Adjust the azimuth adjustment screw for the max. & balance ch. output on both ch. of oscilloscope.
- 2.5 - Secure above screw with glue after adj. completed.

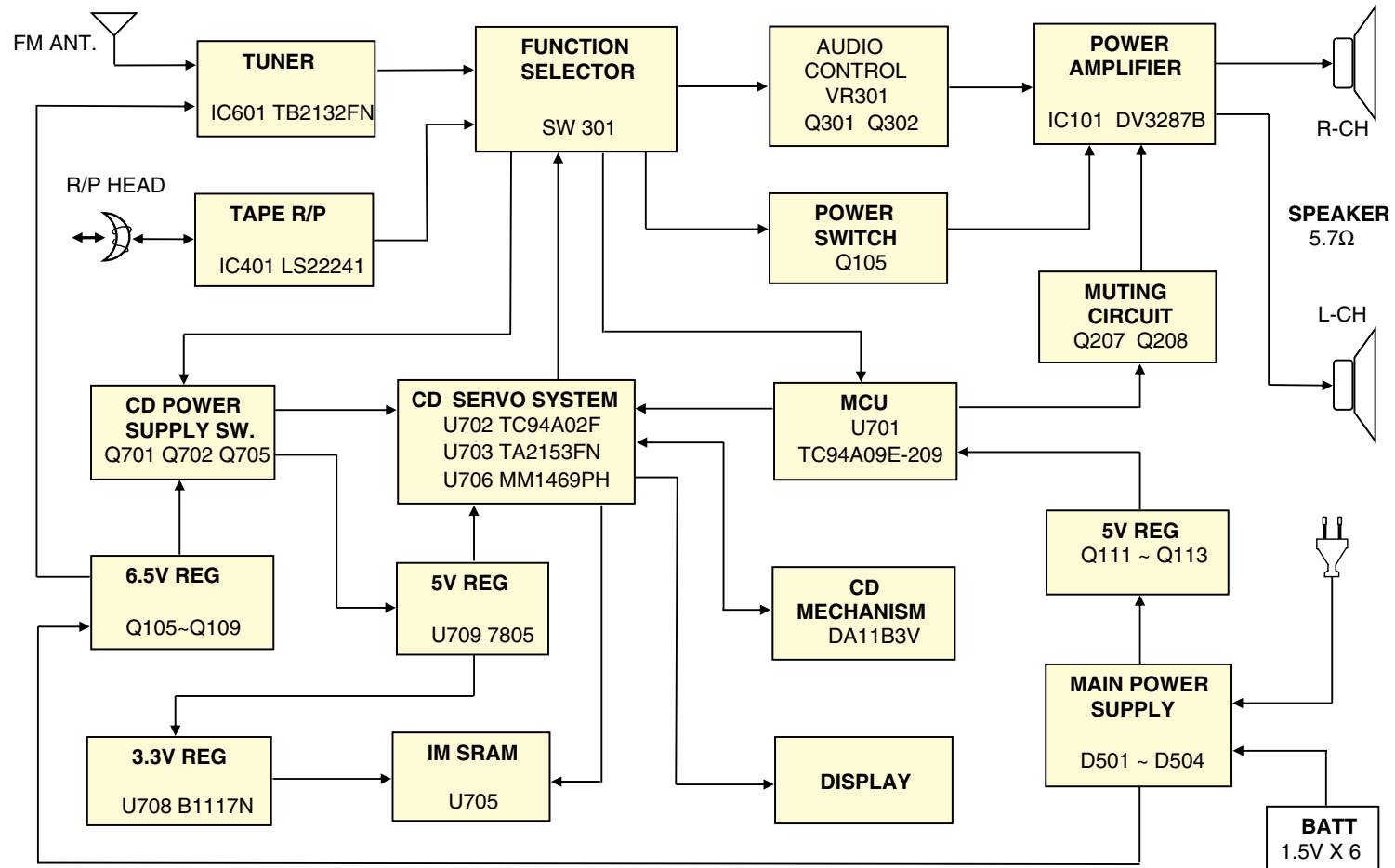
B) EQUIPMENTS REQUESTED FOR AC BIAS FREQUENCY / CURRENT ADJUSTMENT :

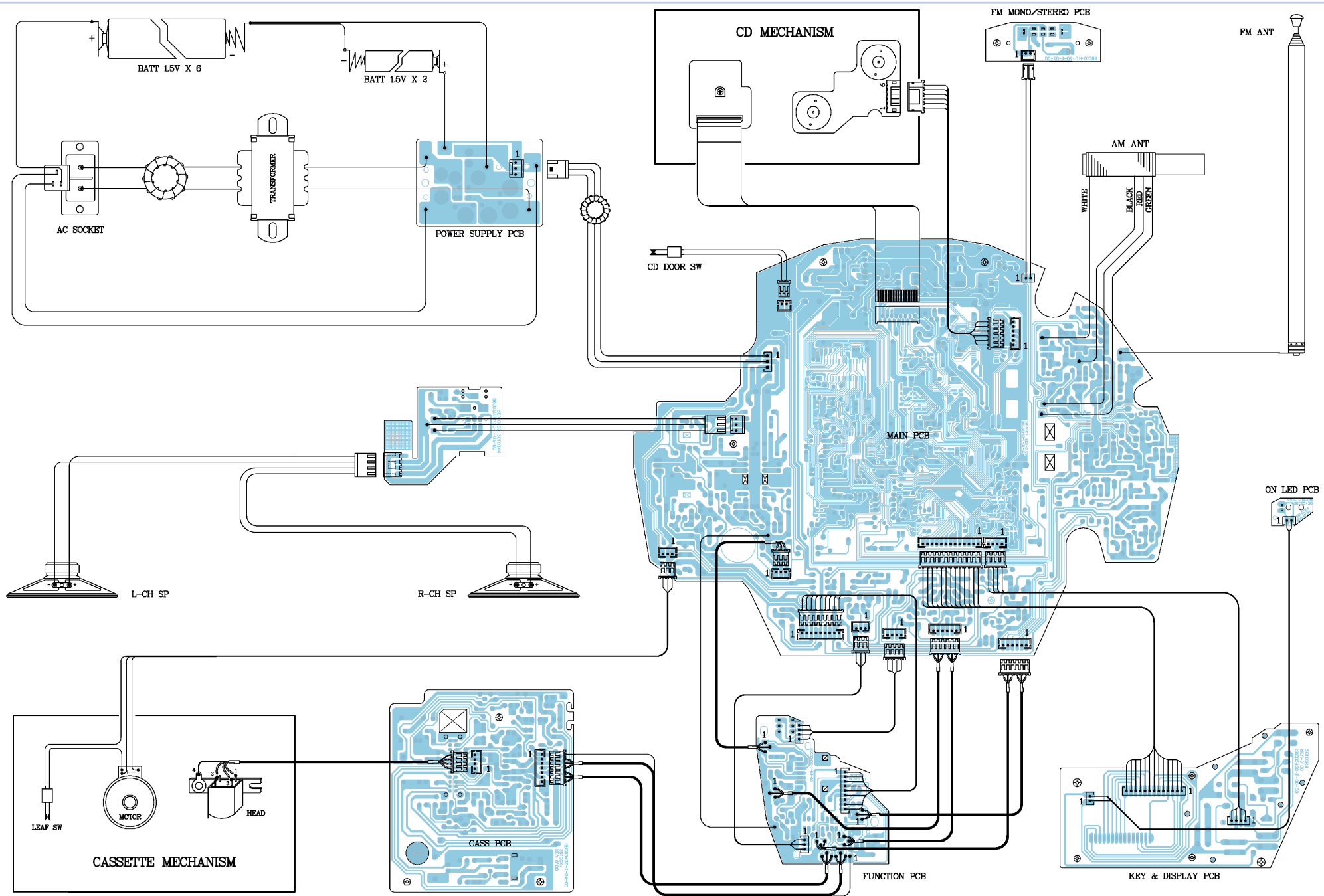


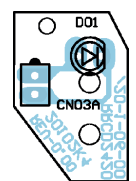
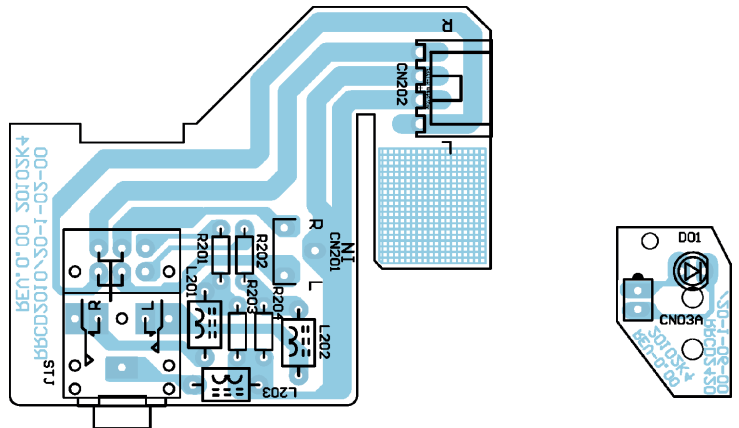
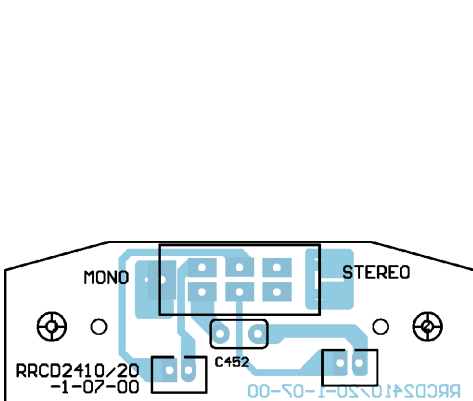
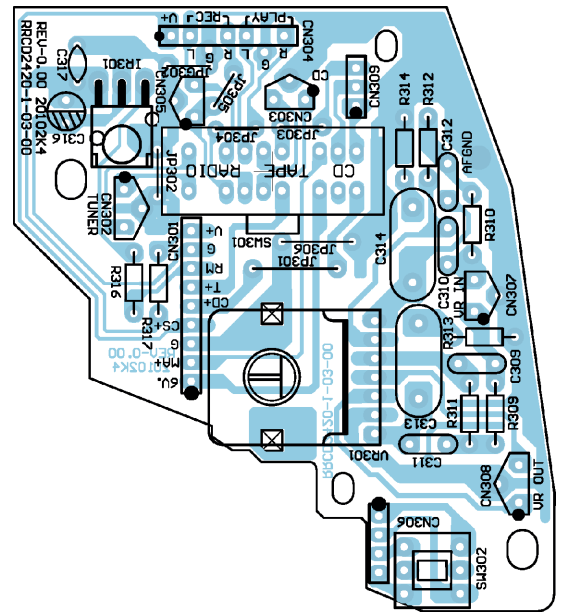
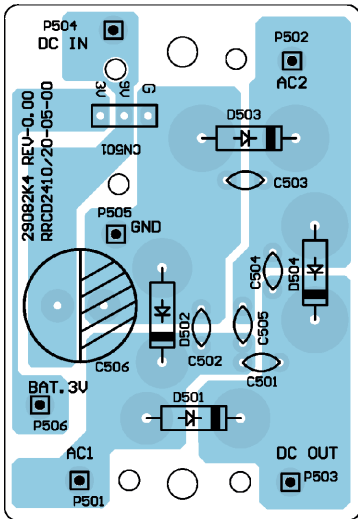
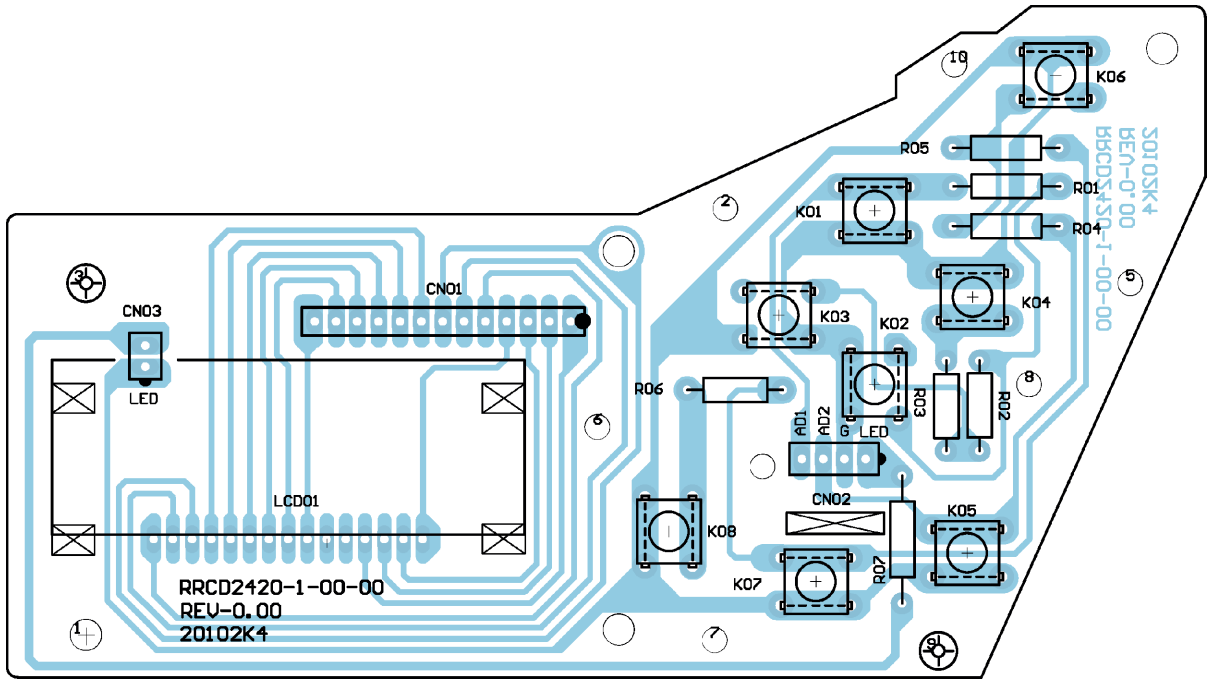
AC BIAS FREQUENCY ALIGNMENT :

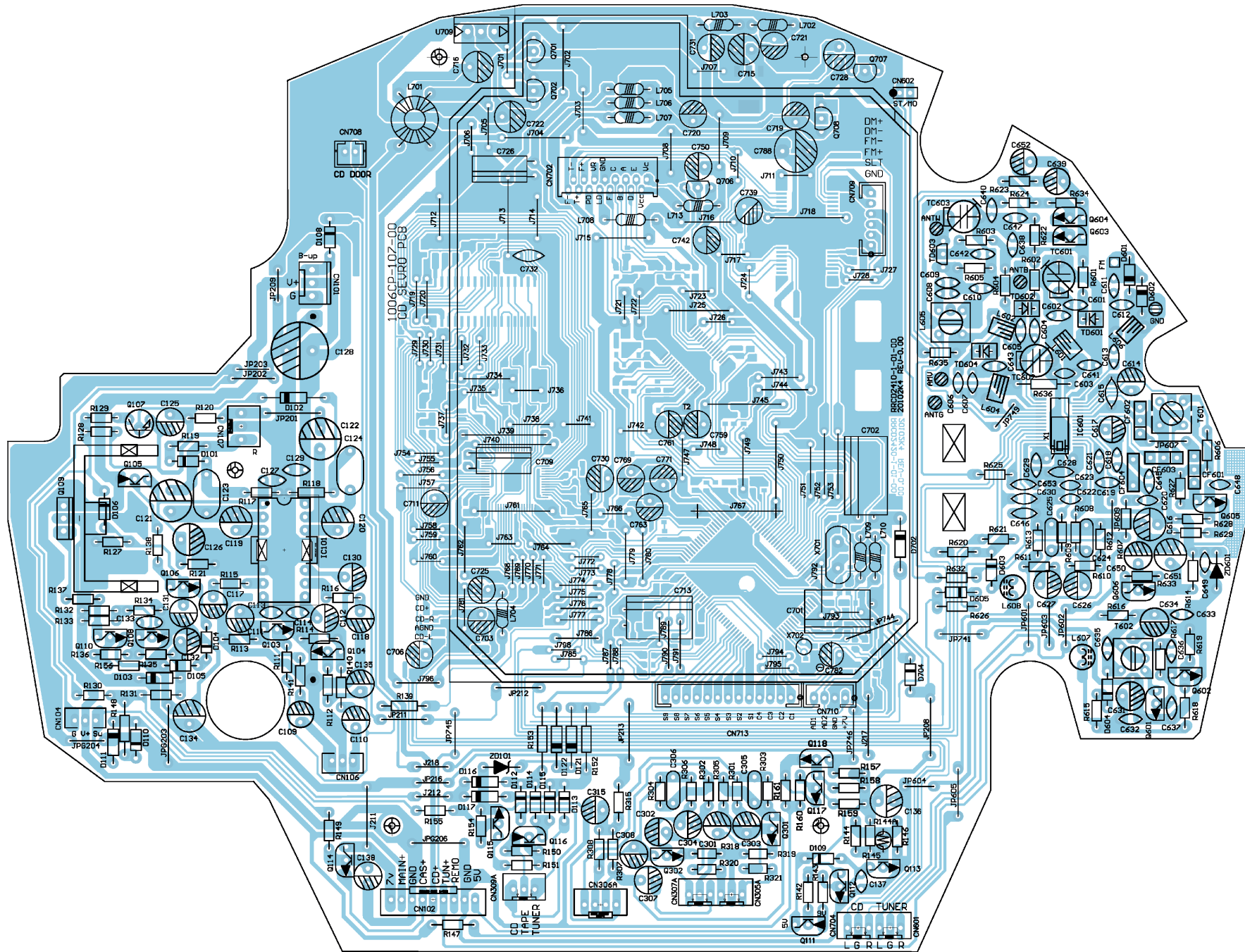
Note :The test unit should be keep in recording mode and added two resistors Ra & Rb as shown in the Fig. 2 before alignment. be sure to delete the both resistors Ra & Rb after alignment completed.

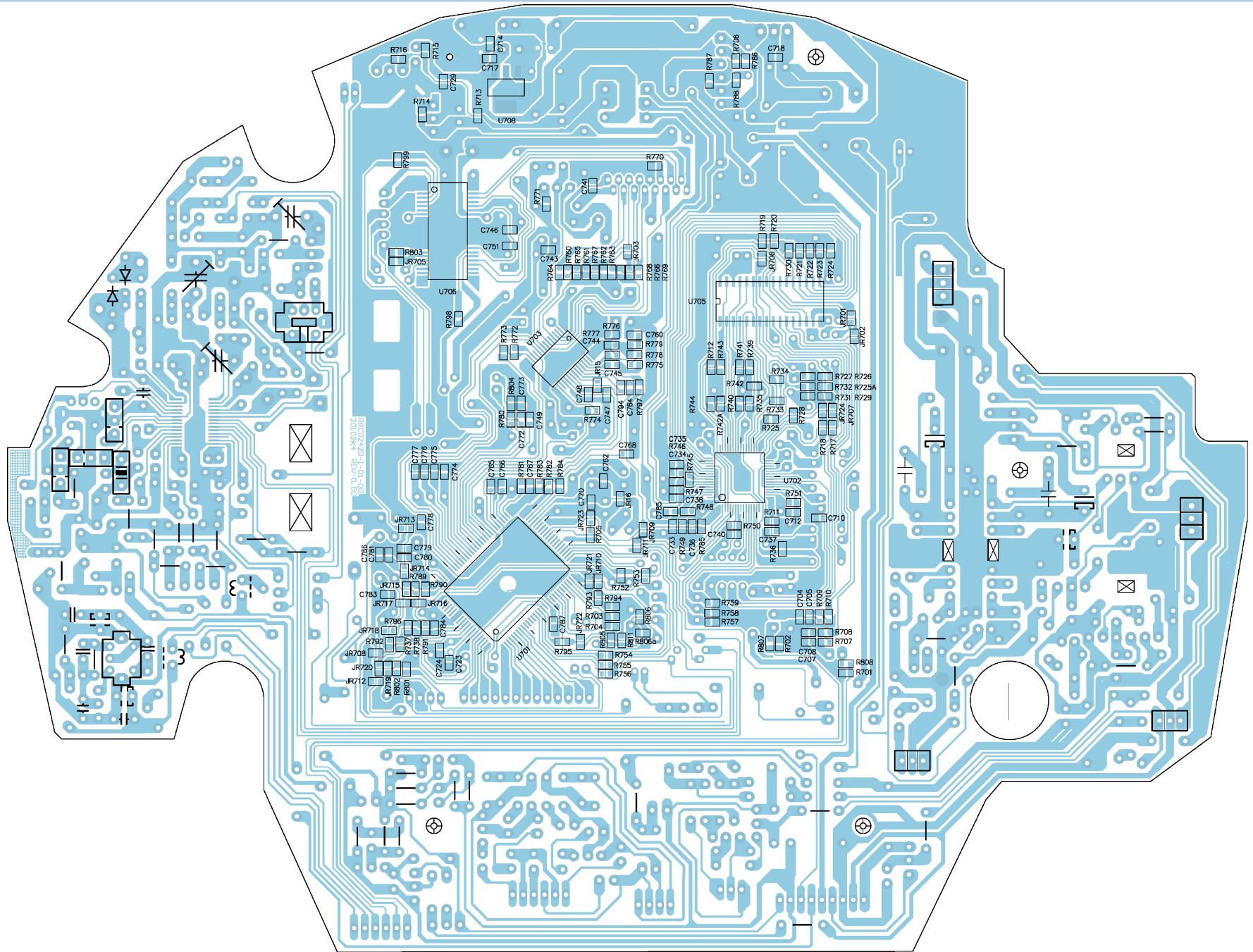
Test Point	Adjust	Frequency at Beat 0	Frequency Observe at		Observe		
			Beat 1	Beat 2	Beat 0	Beat 1	Beat 2
Resistor Ra or Rb	L401	60KHz ± 0.3KHz	54KHz ± 2KHz				

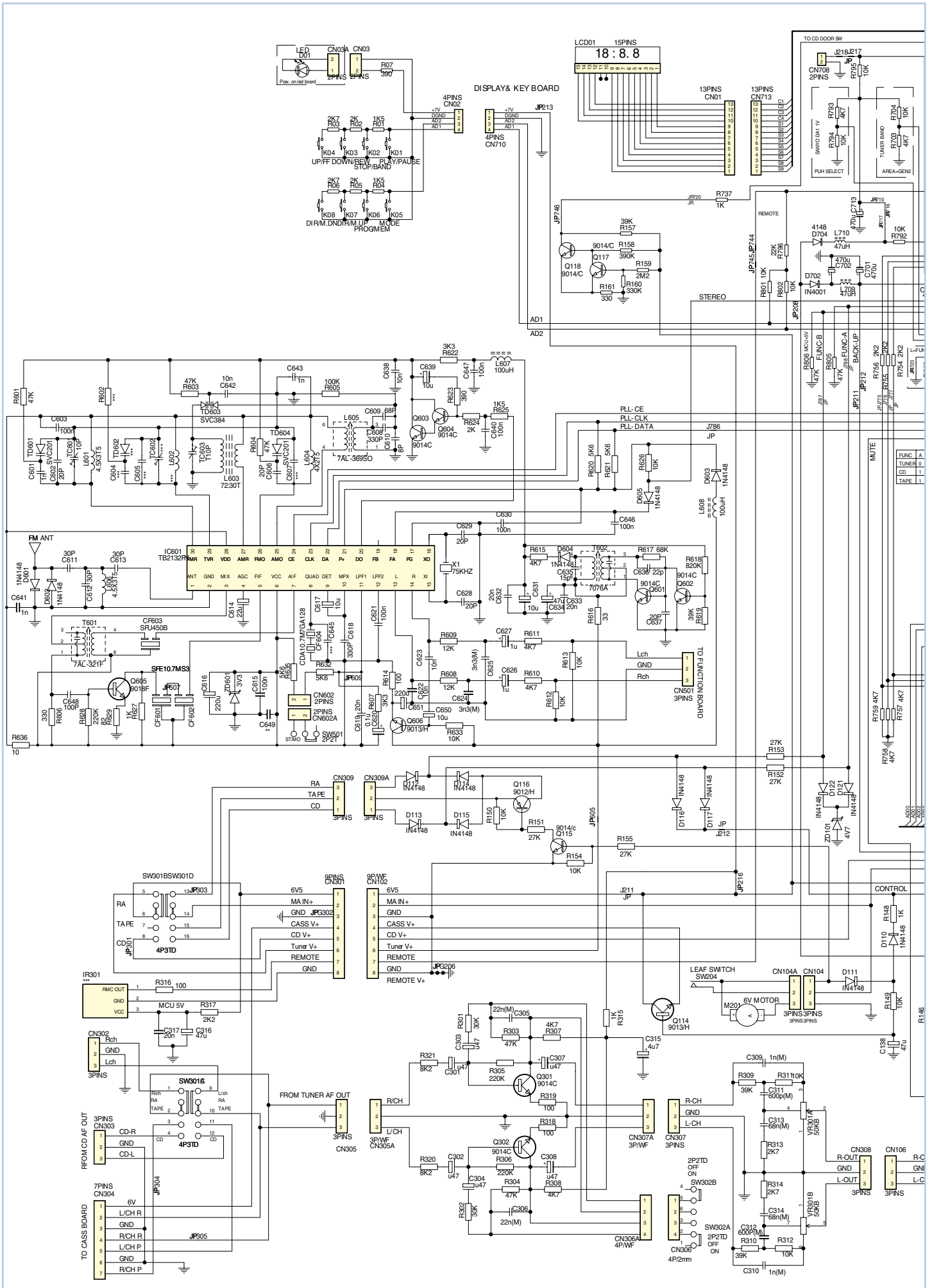


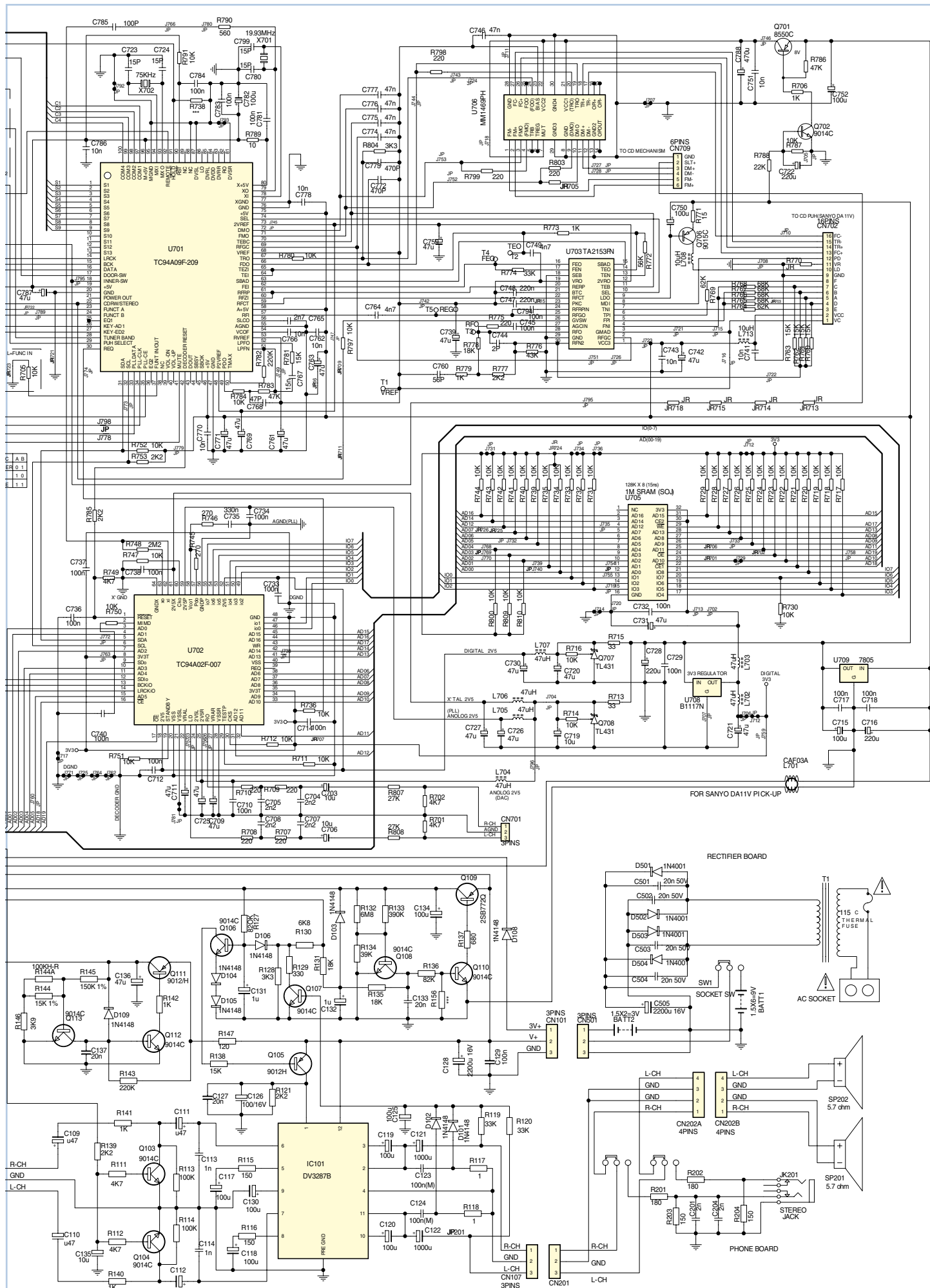


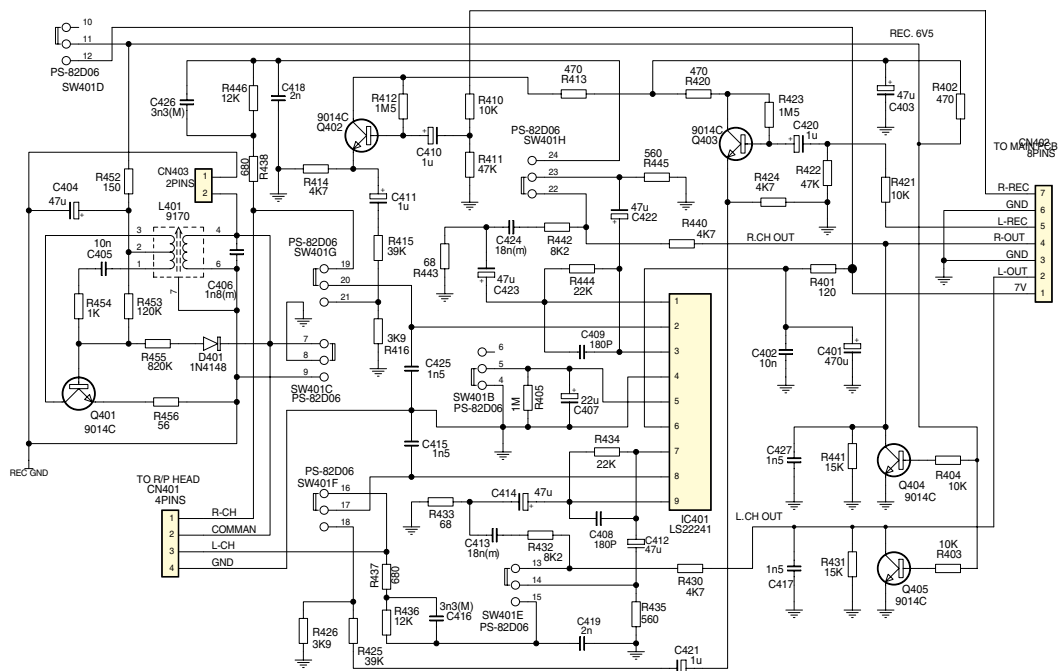
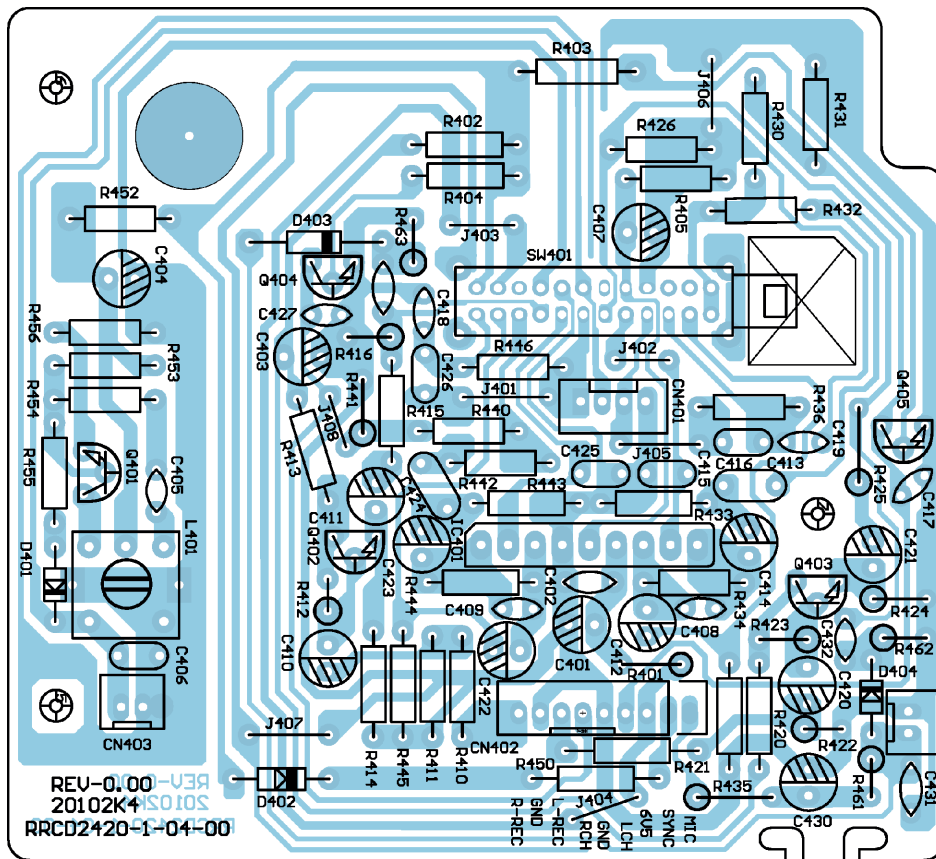


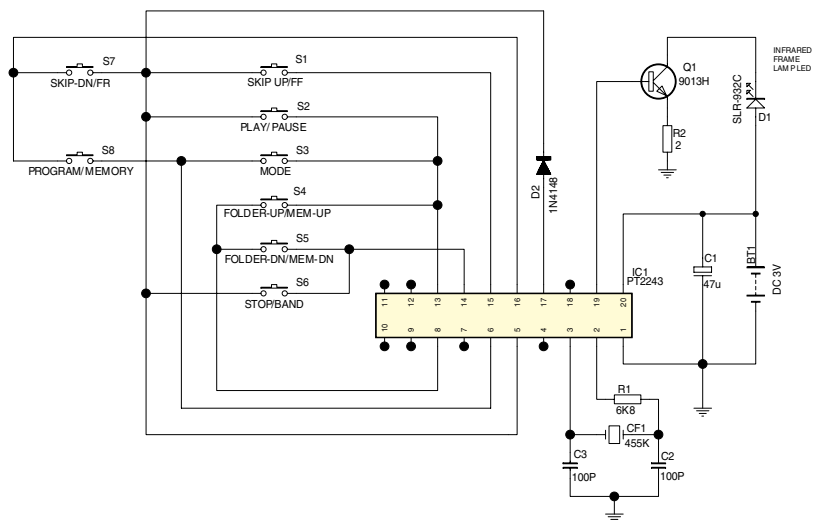
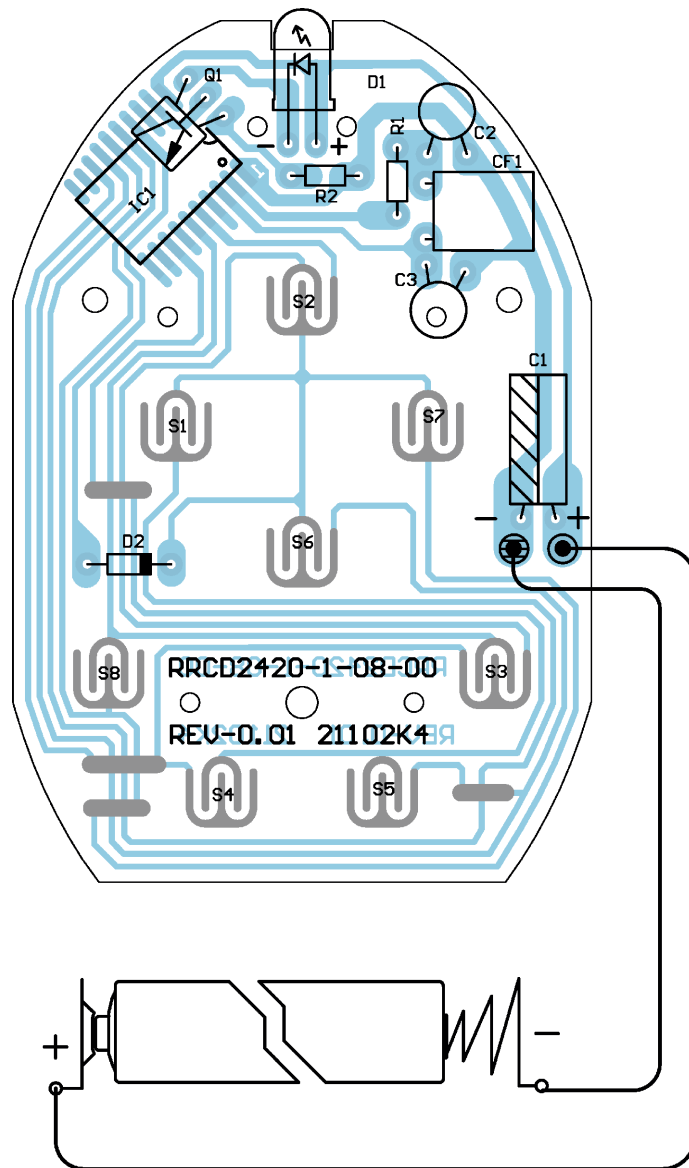


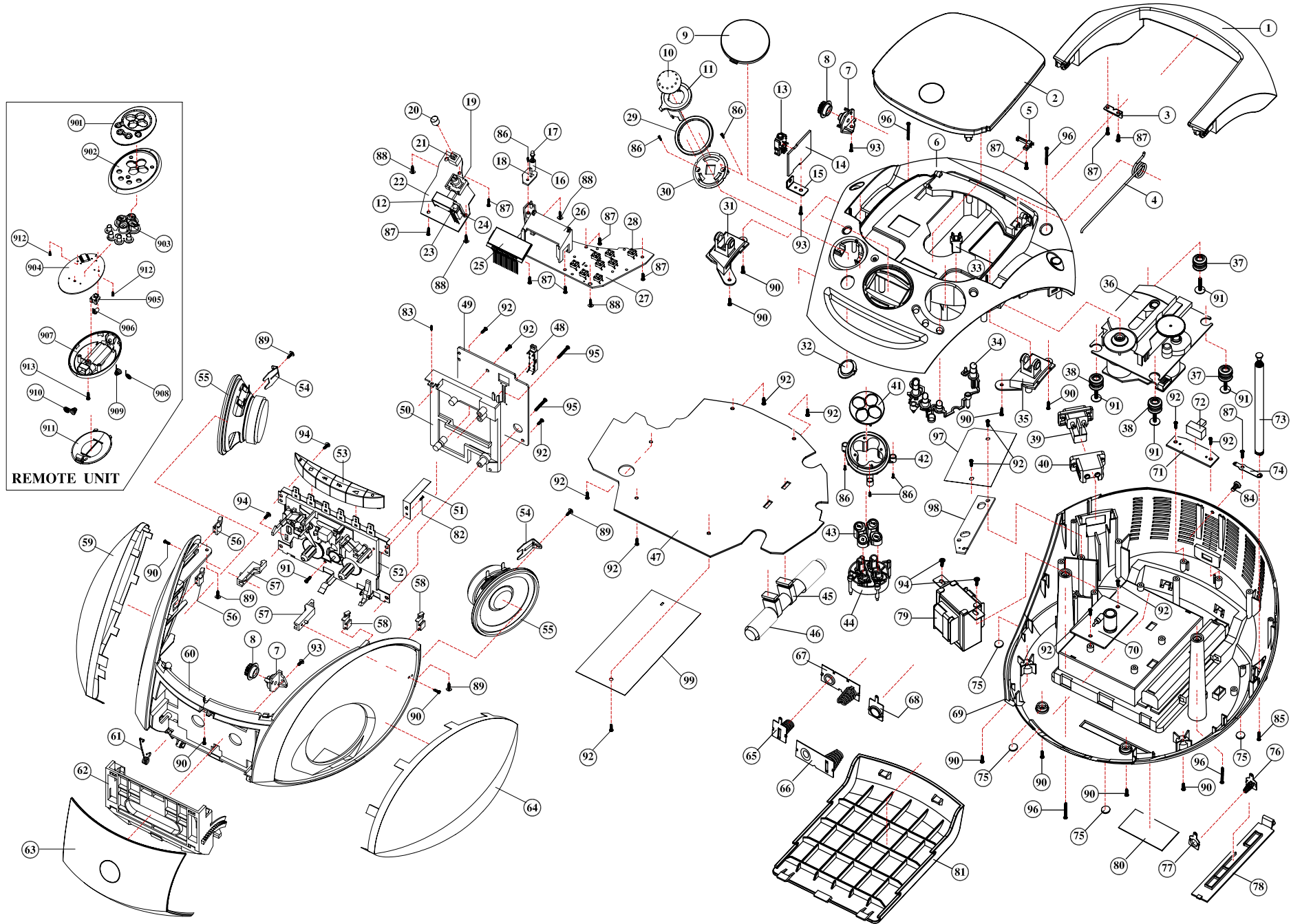




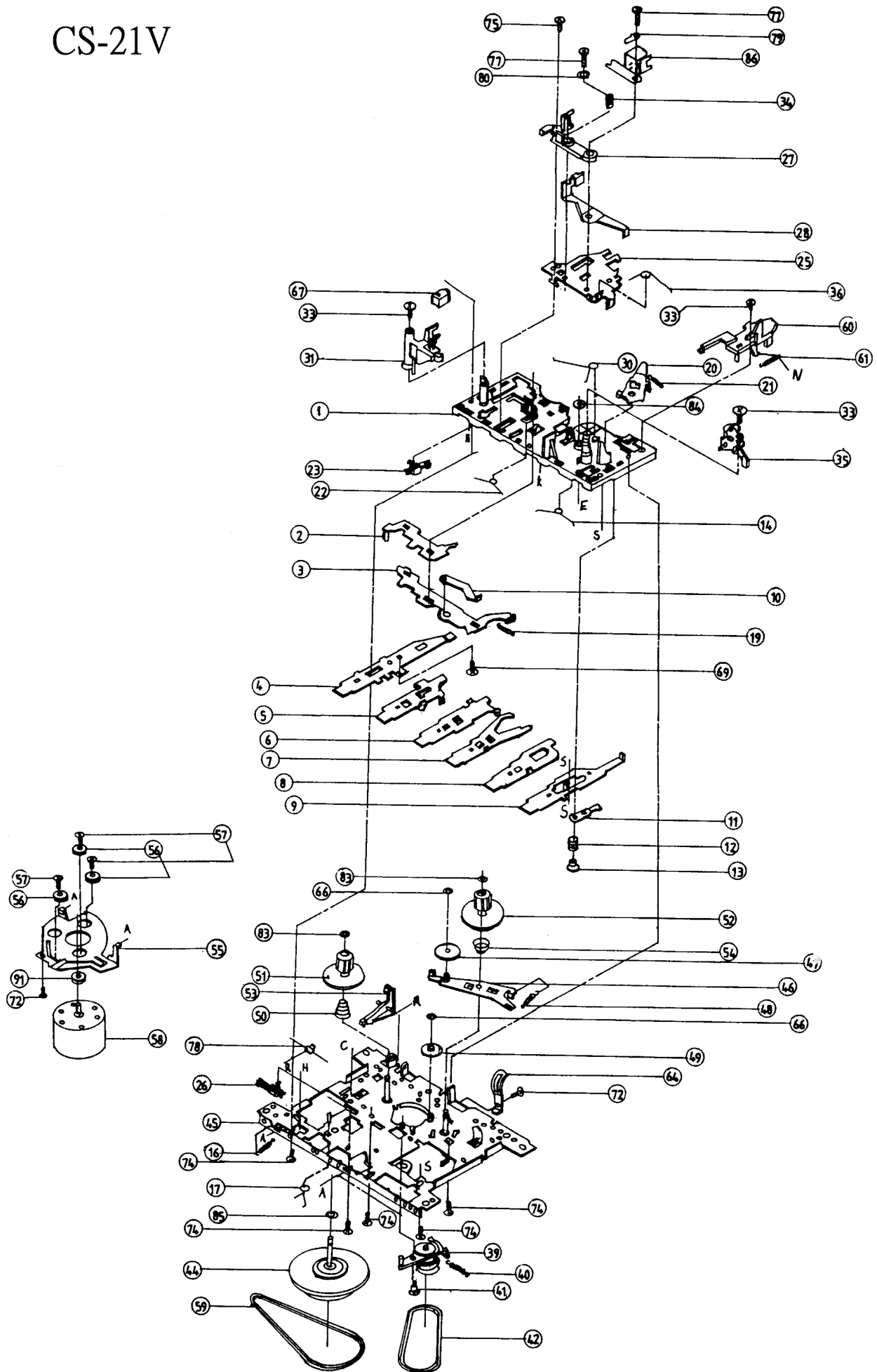






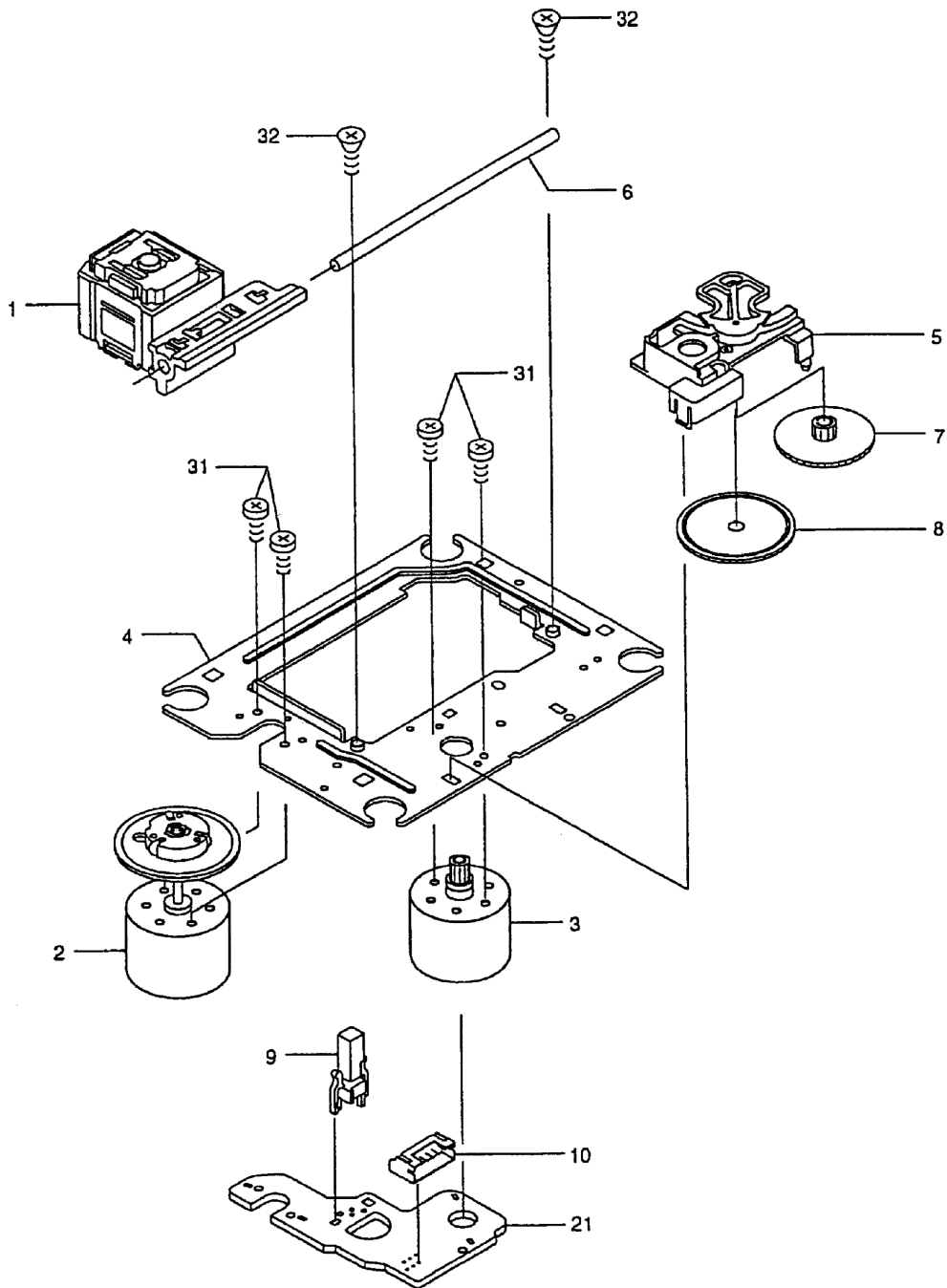


CS-21V



SANYO DA11B3V

CD PLAYER MECHANISM EXPLODED VIEW



GRUNDIGErsatzteilliste
Spare Parts List**NUR FÜR INTERNEN GEBRAUCH**
FOR INTERNAL USE ONLY**AUDIO****3 / 2005****RRCD 2420 MP3**MATERIAL-NR. / PART NO.: 757123475000
BESTELL-NR. / ORDER NO.: GDP5300 CHROME/VERO

POS. NR. POS. NO.	ABB. FIG.	MATERIAL-NR. PART NUMBER	ANZ. QTY.	BEZEICHNUNG (D)	DESCRIPTION (GB)
		757123475000		RRCD 2420 MP3 CHROME/VERO TAUSCHGERAET	RRCD 2420 MP3 CHROME/VERO EXCHANGE SET
0001.000		759551127800		TRAGEGRIFF	HANDLE
0002.000		759551127900		TUER CD	CD DOOR
0004.000		759551126900		FEDER CD TUER	SPRING CD DOOR
0036.000	△	759550615100		LAUFWERK CD DA11-T3CN	CD MECHANISM DA11-T3CN
0052.000		759551088900		LAUFWERK CASS. THL-21VB-1933A	CASS. MECHANISM THL-21VB-1933
0053.000		759551128000		TASTENSATZ CASSETTE	TASTE SET CASSETTE
0061.000		759551126800		FEDER TUER CASSETTE	SPRING CASSETTE DOOR
0062.000		759551128100		EINSATZ CASSETTE	EMPLOYMENT CASSETTE
0063.000		759551127700		TUER CASSETTE	CASSETTE DOOR
0073.000		759551126600		TELESKOPANTENNE	TELESKOPANTENNE
0078.000		759551128300		ABDECKUNG SPEICHERBATTERIE	DOOR BATTERIE MEMORY
0081.000		759551128200		BATTERIEFACHABDECKUNG	DOOR BATTERY
0100.000	△	759551126700		NETZANSCHLUSSKABEL	AC POWER CORD
0900.000		759551110100		FERNBEDIENUNG	REMOTE CONTROL
0911.000		759551128400		BATTERIEFACHDECKEL FERNBED.	BATTERIE DOOR REMOTE CONTROL
		720114051000		BEDIENUNGSANLEITUNG D/GB/F/VP/E/NL/PL/DK/S/FIN	INSTRUCTION MANUAL D/GB/F/VP/E/NL/PL/DK/S/FIN

Es gelten die Vorschriften und Sicherheitshinweise gemäß dem Service Manual "Sicherheit", Mat.-Nummer 720108000001, sowie zusätzlich die eventuell abweichenden, landesspezifischen Vorschriften!



The regulations and safety instructions shall be valid as provided by the "Safety" Service Manual, part number 720108000001, as well as the respective national deviations.

ÄNDERUNGEN VORBEHALTEN / SUBJECT TO ALTERATION