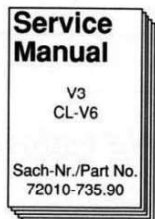


Zusätzlich erforderliche Unterlagen für den Komplettservice:
Additionally required Service Manuals for the Complete Service:

**V 4**

Das Gerät V4 ist eine Weiterentwicklung des Gerätes V3 mit höherer Leistung. In diesem Service Manual sind nur die Unterschiede gegenüber dem Gerät V3 dokumentiert. Für den Service benötigen Sie zusätzlich das Service Manual V3 (Sachnummer 72010-735.90).

The unit V4 is a modification of the unit V3 with higher output power. This Service Manual shows the different parts to V3. For the Service the Service Manual V3 (Part No. 72010-735.90) is needed.

FINEARTS by GRUNDIG**V 4****System Geber / Remote Control System**

(9.55338-8151 / G.LE 1751)

(59802-602.01)

Es gelten die Vorschriften und Sicherheitshinweise gemäß dem Service Manual "Sicherheit", Sach-Nummer 72010-800.00, sowie zusätzlich die eventuell abweichenden, landesspezifischen Vorschriften!



The regulations and safety instructions shall be valid as provided by the "Safety" Service Manual, part number 72010-800.00, as well as the respective national deviations.

D

Inhaltsverzeichnis

| | Seite |
|--|------------------|
| Allgemeiner Teil | 1-2 |
| Technische Daten | 1-2 |
| Servicehinweise | 1-2 |
| Ersatzteilliste | 2-1...2-3 |
| Ersatzteilliste | 2-1 |
| Platinenabbildungen und Schaltpläne | 3-1...3-7 |
| Abkürzungen der Leitungen | 3-1 |
| Platinenabbildungen: | |
| Netzteilplatte, Trafoplatte, Netzanschlußplatte, RC-Platte | 3-2 |
| Schaltpläne: | |
| Netzteilplatte, Trafoplatte, Netzanschlußplatte, RC-Platte | 3-4 |
| NF-Platte, Buchsenplatte, Kopfhörerplatte | 3-6 |

Allgemeiner Teil

Technische Daten

| | |
|--|----------------------|
| Musikleistung (4 Ω) | 2 x 225W |
| Sinusleistung DIN 45500 | |
| (4 Ω /0,7% Klirrfaktor, f = 1kHz) | 2 x 150W |
| (8 Ω /0,7% Klirrfaktor, f = 1kHz) | 2 x 100W |
| Eingangsempfindlichkeit/Impedanz | |
| DSR/AUX, CD, Tuner, Tape, DCC | 180mV/> 47k Ω |
| Phono MM | 2mV/> 47k Ω |
| Lautsprecherimpedanz | |
| Gruppe A oder B | 4...16 Ω |
| Gruppe A und B | 8...16 Ω |
| Klirrfaktor | |
| (Sinusleistung -1dB, 8 Ω , 1kHz) | < 0,005% |
| Geräuschspannungsabstand | > 103dB |
| Leistungsbandbreite | < 5Hz ... > 120kHz |
| Übertragungsbereich linear | < 5Hz ... > 180kHz |
| Dämpfungsfaktor (8 Ω , 1kHz) | > 200 |
| Netzspannung, Netzfrequenz | 230 V~, 50/60Hz |
| max. Leistungsaufnahme | 450W |

Servicehinweis

Das Gerät V4 ist eine Weiterentwicklung des Gerätes V3 mit höherer Leistung. In diesem Service Manual sind nur die Unterschiede gegenüber dem Gerät V3 dokumentiert. Für den Service benötigen Sie zusätzlich das Service Manual V3 (Sachnummer 72010-735.90).

Änderungen auf der Bedienplatte:

R823/330 Ω wurde auf 130 Ω geändert (Service Manual V3).

GB

Table of Contents

| | Page |
|--|------------------|
| General Section | 1-2 |
| Specifications | 1-2 |
| Service Hint | 1-2 |
| Spare Parts List | 2-1...2-3 |
| Spare Parts List | 2-1 |
| Layout of the PCBs and Circuit Diagrams | 3-1...3-7 |
| Abbreviations of wires | 3-1 |
| Layout of the PCBs: | |
| Mains Unit, Transformer, Mains Connectors, RC | 3-2 |
| Circuit Diagrams of PCBs: | |
| Mains Unit, Transformer, Mains Connectors, RC | 3-4 |
| AF, Socket, Headphone | 3-6 |

General Part

Specifications

| | |
|--|----------------------|
| Music output (4 Ω) | 2 x 225W |
| Harmonic output DIN 45500 | |
| (4 Ω /0,7% distortion factor, f = 1kHz) | 2 x 150W |
| (8 Ω /0,7% distortion factor, f = 1kHz) | 2 x 100W |
| Input sensitivity/impedance | |
| DSR/AUX, CD, Tuner, Tape, DCC | 180mV/> 47k Ω |
| Phono MM | 2mV/> 47k Ω |
| Speaker impedance | |
| Group A or B | 4...16 Ω |
| Group A + B | 8...16 Ω |
| Distortion factor | |
| (harmonic output -1dB, 8 Ω , 1kHz) | < 0.005% |
| Noise potential ratio | > 103dB |
| Output band width | < 5Hz ... > 120kHz |
| Transmission range | < 5Hz ... > 180kHz |
| Attenuation factor (8 Ω , 1kHz) | > 200 |
| Supply voltage, mains frequency | 230V~, 50/60Hz |
| Power consumption (max) | 450W |

Service Hint

The unit V4 is a modification of the unit V3 with higher output power. This Service Manual shows the different parts to V3. For the Service the Service Manual V3 (Part No. 72010-735.90) is needed.

Modification of the operating PCB

Resistor R823/330 Ω is changed to 130 Ω (Service Manual V3).

GRUNDIG

Ersatzteilliste Spare Parts List

HIFI

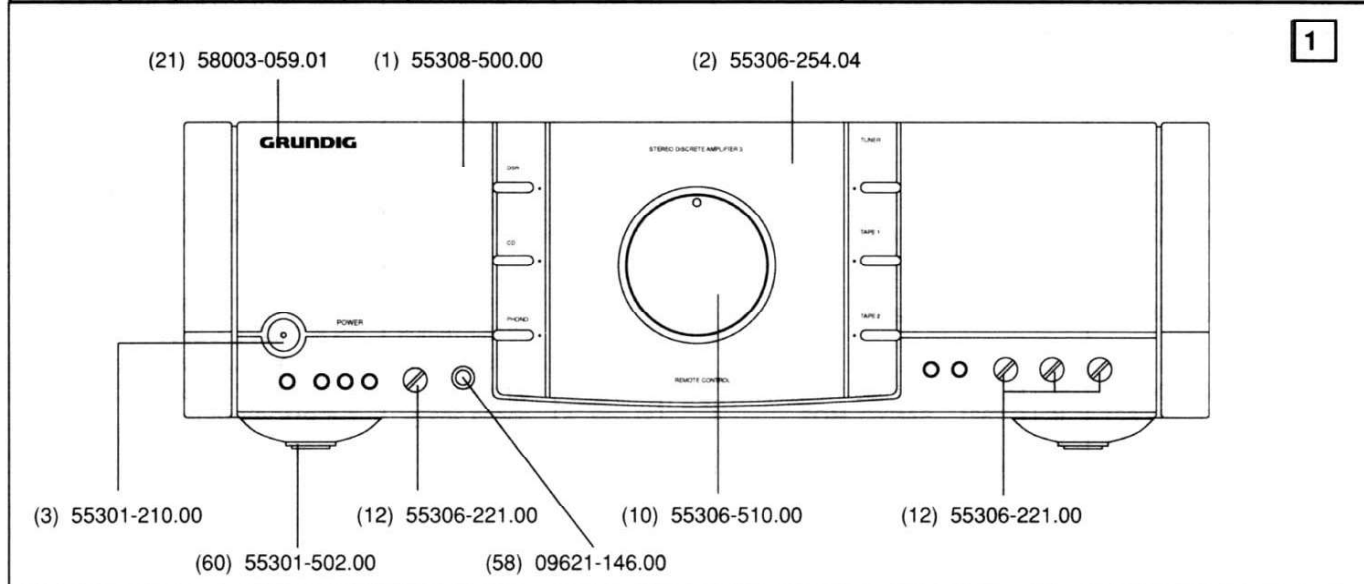
D Btx * 32700 #

6 / 94

V 4

SACH-NR. / PART NO.: 9.55338-8151
BESTELL-NR. / ORDER NO.: G.LE 1751

| POS. NR. POS. NO. | ABB. NR. FIG. NO. | SACHNUMMER PART NUMBER | ANZ. QUA. | BEZEICHNUNG (D) | DESCRIPTION (GB) |
|----------------------|----------------------|---------------------------|--------------|--|---|
| 0001.000 | 1 | 55308-500.00 | | FRONTBLLENDE KPL | FRONT MASK CPL |
| 0002.000 | 1 | 55306-254.04 | | FENSTER | LENS |
| 0003.000 | 1 | 55301-210.00 | | NETZTASTE | POWER KEY |
| 0004.000 | | 55301-206.01 | | STOESSEL | PUNCH SLIDE |
| 0005.000 | | 55301-250.00 | | LED-LINSE | LED LENS |
| 0007.000 | ⚠ | 59401-027.00 | | NETZSCHALTER | POWER SWITCH |
| 0010.000 | 1 | 55306-510.00 | | DREHKNOPF KPL | ROTARY KNOB CPL. |
| 0011.000 | | 55306-140.00 | | FEDER | SPRING |
| 0012.000 | 1 | 55306-221.00 | 4 | KNOPF / BALANCE-BASS-TREBLE REC | KNOB |
| 0021.000 | 1 | 58003-059.01 | | GRUNDIG LOGO | GRUNDIG LOGO |
| 0022.000 | | 29703-357.02 | 6 | TASTSCHALTER / BEDIENPLATTE | TACT SWITCH |
| 0023.000 | | 8134-020-181 | 6 | TASTSCHALTER / BEDIENPLATTE | TACT SWITCH |
| 0025.000 | | 59500-127.00 | | DREHSCHALTER / SCHALTERPLATTE | SWITCH |
| 0030.000 | ⚠ | 09091-007.01 | | NETZTRAFO 230V | POWER TRANSFORMER |
| 0031.000 | ⚠ | 59430-023.01 | | NETZTRAFO | POWER TRANSFORMER |
| 0032.000 | ⚠ | 09623-399.01 | | THERMOSCHALTER TH 702 | THERMAL SWITCH TH 702 |
| 0033.000 | ⚠ | 29303-452.02 | | NETZSTECKER-UNTERTEIL KPL | MAINS PLUG, LOWER PART |
| 0034.000 | ⚠ | 8290-991-275 | | NETZKABEL KPL | MAINS CABLE |
| 0035.000 | | 09666-451.00 | | NETZKABEL-ZUGENTLASTUNG | STRESS RELIEF |
| 0044.000 | ⚠ | 09623-289.00 | 2 | THERMOSCHALTER 105+/-5 TH1/TH2 | THERMO SWITCH 105 +/- 5 TH1/TH2 |
| 0051.000 | ⚠ | 09626-904.00 | | AC-BUCHSE | AC SOCKET |
| 0053.000 | | 55099-125.00 | | MASSEKLEMME | EARTHING CLAMP |
| 0054.000 | | 09623-449.00 | | CINCHBUCHSE 4-FACH | CINCH SOCKET 4 FOLD |
| 0055.000 | | 09623-449.01 | | CINCHBUCHSE 4-FACH / RC | CINCH SOCKET 4 FOLD |
| 0056.000 | | 09623-449.00 | 4 | CINCHBUCHSE 4-FACH | CINCH SOCKET 4 FOLD |
| 0057.000 | | 39612-060.03 | | LS-SCHRAUBKLEMME 4-FACH | LS-HEAD CONTACT CLAMP |
| 0058.000 | 1 | 09621-146.00 | | STEREO-KOPFHOERERBUCHSE | STEREO-HEAD SET SOCKET |
| 0060.000 | 1 | 55301-502.00 | 4 | FUSS KPL | FOOT CPL. |
| 0062.000 | | 59852-001.00 | | IR-EMPFAENGER TFMS 5360 | IR RECEIVER TFMS 5360 |
| 0063.000 | | 59802-602.01 | | IR-GEBER / FERNBEDIENUNG | IR REMOTE CONTROL |
| 0064.000 | | 55301-501.00 | | FRONTDECKEL KPL | FRONT LID ASSY. |
| | | 72010-740.40 | | SERVICE MANUAL | SERVICE MANUAL |
| | | 55338-941.01 | | BEDIENUNGSANLEITUNG | INSTRUCTION MANUAL |



ÄNDERUNGEN VORBEHALTEN



ALTERATIONS RESERVED



| POS. NR. POS. NO. | SACHNUMMER PART NUMBER | BEZEICHNUNG DESCRIPTION | (D) (GB) |
|----------------------------|---------------------------|----------------------------|-------------|
| C 539 | 8443-306-118 | ELKO 1000UF 63V EYS | |
| C 541 | 8443-306-118 | ELKO 1000UF 63V EYS | |
| C 711 | 8452-996-187 | ELKO CB 1000UF 35V | |
| C 718 | 8660-097-241 | SI-KERKO.B-SG 3300PF 20% | |
| D 201 | 8309-215-043 | DIODE 1 N 4151 PHI/TFK/ | |
| D 202 | 8309-215-043 | DIODE 1 N 4151 PHI/TFK/ | |
| D 203 | 8309-215-043 | DIODE 1 N 4151 PHI/TFK/ | |
| D 204 | 8309-215-043 | DIODE 1 N 4151 PHI/TFK/ | |
| D 205 | 8309-215-043 | DIODE 1 N 4151 PHI/TFK/ | |
| D 401 | 8309-720-160 | Z DIODE 16 C 0,5W | |
| D 501 | 8309-720-083 | Z DIODE 8,2 B 0,5W | |
| D 502 | 8309-720-115 | Z DIODE 15 B 0,5W | |
| D 503 | 8309-215-045 | DIODE 1 N 4148 | |
| D 504 | 8309-215-045 | DIODE 1 N 4148 | |
| D 505 | 8309-720-099 | Z DIODE 10 B 0,5W | |
| D 506 | 8309-215-045 | DIODE 1 N 4148 | |
| D 507 | 8309-215-045 | DIODE 1 N 4148 | |
| D 508 | 8309-215-043 | DIODE 1 N 4151 PHI/TFK/ | |
| D 509 | 8309-215-043 | DIODE 1 N 4151 PHI/TFK/ | |
| D 511 | 8309-215-043 | DIODE 1 N 4151 PHI/TFK/ | |
| D 512 | 8309-215-043 | DIODE 1 N 4151 PHI/TFK/ | |
| D 513 | 8309-215-045 | DIODE 1 N 4148 | |
| D 701 | 8309-215-043 | DIODE 1 N 4151 PHI/TFK/ | |
| D 702 | 8309-215-043 | DIODE 1 N 4151 PHI/TFK/ | |
| D 703 | 8309-215-043 | DIODE 1 N 4151 PHI/TFK/ | |
| D 704 | 8309-682-511 | Z DIODE ZPY 8,2 ITT | |
| D 705 | 8309-215-006 | DIODE 1 N 4001 -GA | |
| D 706 | 8309-215-006 | DIODE 1 N 4001 -GA | |
| D 707 | 8309-215-006 | DIODE 1 N 4001 -GA | |
| D 708 | 8309-215-006 | DIODE 1 N 4001 -GA | |
| D 709 | 8309-215-043 | DIODE 1 N 4151 PHI/TFK/ | |
| D 710 | 8309-215-043 | DIODE 1 N 4151 PHI/TFK/ | |
| D 711 | 8309-215-045 | DIODE 1 N 4148 | |
| D 712 | 8309-215-045 | DIODE 1 N 4148 | |
| D 713 | 8309-215-006 | DIODE 1 N 4001 -GA | |
| D 801 | 8309-944-411 | LE DIODE TLHY 4405 BT12Z | |
| D 802 | 8309-944-411 | LE DIODE TLHY 4405 BT12Z | |
| D 803 | 8309-944-410 | LE DIODE TLHY 4405 TFK | |
| D 804 | 8309-944-411 | LE DIODE TLHY 4405 BT12Z | |
| D 805 | 8309-944-411 | LE DIODE TLHY 4405 BT12Z | |
| D 806 | 8309-215-045 | DIODE 1 N 4148 | |
| D 807 | 8309-215-045 | DIODE 1 N 4148 | |
| D 808 | 8309-215-045 | DIODE 1 N 4148 | |
| D 809 | 8309-944-410 | LE DIODE TLHY 4405 TFK | |
| D 811 | 8309-944-410 | LE DIODE TLHY 4405 TFK | |
| D 812 | 8309-944-410 | LE DIODE TLHY 4405 TFK | |
| D 813 | 8309-944-410 | LE DIODE TLHY 4405 TFK | |
| D 814 | 8309-944-410 | LE DIODE TLHY 4405 TFK | |
| D 815 | 8309-944-410 | LE DIODE TLHY 4405 TFK | |
| D 816 | 8309-944-411 | LE DIODE TLHY 4405 BT12Z | |
| D 817 | 8309-215-045 | DIODE 1 N 4148 | |
| D 818 | 8309-215-045 | DIODE 1 N 4148 | |
| D 819 | 8309-215-045 | DIODE 1 N 4148 | |
| D 820 | 8309-215-045 | DIODE 1 N 4148 | |
| D 823 | 8309-215-045 | DIODE 1 N 4148 | |
| D 824 | 8309-215-045 | DIODE 1 N 4148 | |
| D 901 | 8309-944-410 | LE DIODE TLHY 4405 TFK | |
| GL 501 | 8308-085-012 | GLR.GBPC 12-02 W GI | |
| IC 1 | 8305-204-834 | IC LM 833 N ELLI 580 NSC | |
| IC 2 | 8305-262-821 | IC LC 7821 SANYO MOS | |
| IC 3 | 8305-262-821 | IC LC 7821 SANYO MOS | |
| IC 101 | 8305-262-066 | IC LC 4966 SANYO | |
| IC 401 | 8305-262-066 | IC LC 4966 SANYO | |
| IC 501 | 8305-077-062 | IC AN 7062 N PAN | |

ÄNDERUNGEN VORBEHALTEN

| POS. NR. POS. NO. | SACHNUMMER PART NUMBER | BEZEICHNUNG DESCRIPTION | (D) (GB) |
|----------------------------|---------------------------|----------------------------|-------------|
| IC 502 | 8305-407-317 | IC TA 7317 P TOS | |
| IC 701 | 8305-205-705 | IC MC 78 M 05 CT MOT | |
| IC 702 | 8305-204-317 | IC LM 317 T NSC/MOT/ | |
| IC 703 | 8305-204-337 | IC LM 337 T | |
| IC 801 | 8305-210-035 | IC ZC 412196 P MOT | |
| IC 802 | 8305-602-400 | IC X 24 C 00P XICOR | |
| L 501 | 09241-092.01 | HF-SPULE | |
| L 502 | 09241-092.01 | HF-SPULE | |
| L 701 | 8140-601-177 | AC-Filter 3A/250V | |
| NW 801 | 8770-490-113 | R-NETZ 8X47 KOHM | |
| Q 801 | 8602-331-086 | CER.RES.86/13 CST 4.0 MGW | |
| R 89 | 8701-118-041 | KSW SI B 47 OHM 5% -GA | |
| R 91 | 8701-118-041 | KSW SI B 47 OHM 5% -GA | |
| R 112 | 8766-701-051 | KSW SI A 120 OHM 5% -GA | |
| R 113 | 8766-701-051 | KSW SI A 120 OHM 5% -GA | |
| R 223 | 59713-017.00 | POTENTIOMETER HOEHEN+BASS | |
| R 225 | 59713-017.00 | POTENTIOMETER HOEHEN+BASS | |
| R 266 | 8700-229-037 | KSW AX 0207-GA NB | |
| R 267 | 8700-229-037 | KSW AX 0207-GA NB | |
| R 268 | 59713-012.00 | POTENTIOMETER / BALANCE | |
| R 407 | 59703-397.00 | POTENTIOMETER / LAUTST. | |
| R 526 | 8792-002-140 | ESTR.S6 2,2 KOHM LIN | |
| R 532 | 8792-002-140 | ESTR.S6 2,2 KOHM LIN | |
| R 547 | 8700-229-025 | KSW AX 0207-GA NB | |
| R 548 | 8700-229-025 | KSW AX 0207-GA NB | |
| R 549 | 8700-229-025 | KSW AX 0207-GA NB | |
| R 551 | 8700-229-025 | KSW AX 0207-GA NB | |
| R 552 | 8700-229-025 | KSW AX 0207-GA NB | |
| R 553 | 8700-229-025 | KSW AX 0207-GA NB | |
| R 554 | 8700-229-025 | KSW AX 0207-GA NB | |
| R 556 | 8700-229-025 | KSW AX 0207-GA NB | |
| R 559 | 8740-002-995 | DRW 3W 0,15 OHM 10% AC03 | |
| R 561 | 8740-002-995 | DRW 3W 0,15 OHM 10% AC03 | |
| R 562 | 8740-002-995 | DRW 3W 0,15 OHM 10% AC03 | |
| R 563 | 8740-002-995 | DRW 3W 0,15 OHM 10% AC03 | |
| R 564 | 8700-229-033 | KSW AX 0207-GA NB | |
| R 565 | 8700-229-033 | KSW AX 0207-GA NB | |
| R 566 | 8740-002-995 | DRW 3W 0,15 OHM 10% AC03 | |
| R 567 | 8740-002-995 | DRW 3W 0,15 OHM 10% AC03 | |
| R 582 | 8705-279-025 | MOW AX 0922-GA 10 OHM | |
| R 583 | 8705-279-025 | MOW AX 0922-GA 10 OHM | |
| R 709 | 8701-118-031 | KSW SI B 18 OHM 5% -GA | |
| RL 501 | 8312-004-410 | RELAIS RP 441024 SCHRACK | |
| RL 502 | 8312-004-410 | RELAIS RP 441024 SCHRACK | |
| RL 701 | 8312-004-380 | RELAIS RP 438020 SCHRACK | |
| SI 701 | 8315-616-003 | FS.800 MA/T L 250V | |
| SI 702 | 8315-616-003 | FS.800 MA/T L 250V | |
| SI 703 | 8315-623-003 | FS. 4 A/T L 250V | |
| SI 704 | 8315-616-003 | FS.800 MA/T L 250V | |
| SI 791 | 09623-393.05 | THERMOSICHERUNG | |

ALTERATIONS RESERVED

| POS. NR. POS. NO. | SACHNUMMER PART NUMBER | BEZEICHNUNG DESCRIPTION |   |
|----------------------------|---------------------------|----------------------------|--|
| T 1 | 8303-259-550 | TRANS.BC 550 C | SIE/PHI |
| T 2 | 8303-259-550 | TRANS.BC 550 C | SIE/PHI |
| T 3 | 8303-259-550 | TRANS.BC 550 C | SIE/PHI |
| T 4 | 8303-259-550 | TRANS.BC 550 C | SIE/PHI |
| T 5 | 8303-259-550 | TRANS.BC 550 C | SIE/PHI |
| T 6 | 8303-259-550 | TRANS.BC 550 C | SIE/PHI |
| T 7 | 8303-259-550 | TRANS.BC 550 C | SIE/PHI |
| T 8 | 8303-259-550 | TRANS.BC 550 C | SIE/PHI |
| T 9 | 8303-259-550 | TRANS.BC 550 C | SIE/PHI |
| T 11 | 8303-259-550 | TRANS.BC 550 C | SIE/PHI |
| T 201 | 8303-259-550 | TRANS.BC 550 C | SIE/PHI |
| T 202 | 8303-259-550 | TRANS.BC 550 C | SIE/PHI |
| T 203 | 8303-267-560 | TRANS.BC 560 C | SIE/PHI |
| T 204 | 8303-267-560 | TRANS.BC 560 C | SIE/PHI |
| T 205 | 8303-259-550 | TRANS.BC 550 C | SIE/PHI |
| T 206 | 8303-259-550 | TRANS.BC 550 C | SIE/PHI |
| T 207 | 8303-259-550 | TRANS.BC 550 C | SIE/PHI |
| T 208 | 8303-259-550 | TRANS.BC 550 C | SIE/PHI |
| T 209 | 8303-205-550 | TRANS.BC 550 B | |
| T 211 | 8303-205-550 | TRANS.BC 550 B | |
| T 212 | 8303-205-550 | TRANS.BC 550 B | |
| T 213 | 8303-205-550 | TRANS.BC 550 B | |
| T 214 | 8303-205-558 | TRANS.BC 558 B | |
| T 215 | 8303-205-548 | TRANS.BC 548 B | |
| T 216 | 8303-259-550 | TRANS.BC 550 C | SIE/PHI |
| T 217 | 8303-259-550 | TRANS.BC 550 C | SIE/PHI |
| T 401 | 8303-259-550 | TRANS.BC 550 C | SIE/PHI |
| T 402 | 8303-259-550 | TRANS.BC 550 C | SIE/PHI |
| T 403 | 8303-267-560 | TRANS.BC 560 C | SIE/PHI |
| T 404 | 8303-267-560 | TRANS.BC 560 C | SIE/PHI |
| T 501 | 8302-611-145 | TRANS.2 SA 1145 Y | |
| T 502 | 8302-622-705 | TRANS.2 SC 2705-Y | |
| T 503 | 8302-611-145 | TRANS.2 SA 1145 Y | |
| T 504 | 8302-622-705 | TRANS.2 SC 2705-Y | |
| T 505 | 8302-631-508 | TRANS.2 SD 1508 | TOS |
| T 506 | 8302-631-508 | TRANS.2 SD 1508 | TOS |
| T 507 | 8302-622-229 | TRANS.2 SC 2229-Y | TOS |
| T 508 | 8302-600-949 | TRANS.2 SA 949-Y | TOS |
| T 509 | 8302-622-229 | TRANS.2 SC 2229-Y | TOS |
| T 511 | 8302-600-949 | TRANS.2 SA 949-Y | TOS |
| T 512 | 8302-624-793 | TRANS.2 SC 4793 | TOS |
| T 513 | 8302-611-837 | TRANS.2 SA 1837 | TOS |

| POS. NR. POS. NO. | SACHNUMMER PART NUMBER | BEZEICHNUNG DESCRIPTION |   |
|----------------------------|---------------------------|----------------------------|--|
| T 514 | 8302-624-793 | TRANS.2 SC 4793 | TOS |
| T 515 | 8302-611-837 | TRANS.2 SA 1837 | TOS |
| T 516 | 8302-622-182 | TRANS.2 SC 3182 N-O,R | TOS |
| T 517 | 8302-611-265 | TRANS.2 SA 1265 N-O,R | TOS |
| T 518 | 8302-622-182 | TRANS.2 SC 3182 N-O,R | TOS |
| T 519 | 8302-611-265 | TRANS.2 SA 1265 N-O,R | TOS |
| T 521 | 8302-622-182 | TRANS.2 SC 3182 N-O,R | TOS |
| T 522 | 8302-611-265 | TRANS.2 SA 1265 N-O,R | TOS |
| T 523 | 8302-622-182 | TRANS.2 SC 3182 N-O,R | TOS |
| T 524 | 8302-611-265 | TRANS.2 SA 1265 N-O,R | TOS |
| T 525 | 8303-241-546 | TRANS.BC 546 B | |
| T 526 | 8303-241-546 | TRANS.BC 546 B | |
| T 527 | 8303-241-556 | TRANS.BC 556 B | |
| T 528 | 8303-205-548 | TRANS.BC 548 B | |
| T 529 | 8303-205-548 | TRANS.BC 548 B | |
| T 701 | 8303-205-548 | TRANS.BC 548 B | |
| T 702 | 8303-205-558 | TRANS.BC 558 B | |
| T 801 | 8303-205-548 | TRANS.BC 548 B | |
| T 802 | 8303-205-548 | TRANS.BC 548 B | |
| T 803 | 8303-205-558 | TRANS.BC 558 B | |
| T 804 | 8303-205-558 | TRANS.BC 558 B | |
| T 805 | 8303-207-548 | TRANS.BC 548 C | |
| T 806 | 8303-207-548 | TRANS.BC 548 C | |
| T 807 | 8303-205-548 | TRANS.BC 548 B | |
| T 808 | 8303-205-558 | TRANS.BC 558 B | |
| T 809 | 8303-205-558 | TRANS.BC 558 B | |
| T 811 | 8303-205-558 | TRANS.BC 558 B | |
| T 812 | 8303-205-558 | TRANS.BC 558 B | |
| T 813 | 8303-205-548 | TRANS.BC 548 B | |
| T 814 | 8303-205-558 | TRANS.BC 558 B | |
| T 815 | 8303-205-558 | TRANS.BC 558 B | |
| T 816 | 8303-205-558 | TRANS.BC 558 B | |
| T 817 | 8303-205-558 | TRANS.BC 558 B | |
| T 818 | 8303-273-338 | TRANS.BC 338-25 | |
| T 819 | 8303-273-328 | TRANS.BC 328-25 | PHI/ITT |
| T 821 | 8303-273-338 | TRANS.BC 338-25 | |
| T 822 | 8303-273-328 | TRANS.BC 328-25 | PHI/ITT |
| T 823 | 8303-205-558 | TRANS.BC 558 B | |
| T 824 | 8303-205-548 | TRANS.BC 548 B | |
| T 825 | 8303-205-558 | TRANS.BC 558 B | |
| T 826 | 8303-205-548 | TRANS.BC 548 B | |
| T 827 | 8303-205-558 | TRANS.BC 558 B | |

Es gelten die Vorschriften und Sicherheitshinweise gemäß dem Service Manual "Sicherheit", Sach-Nummer 72010-800.00, sowie zusätzlich die eventuell abweichenden, landesspezifischen Vorschriften!



The regulations and safety instructions shall be valid as provided by the "Safety" Service Manual, part number 72010-800.00, as well as the respective national deviations.

Platinenabbildungen und Schaltpläne / Layout of the PCBs and Circuit Diagram

Abkürzungen der Leitungen

(auch für V3)

| | |
|-------|---------------------------------------|
| +5V | Versorgungsspannung +5V DC |
| GND5 | Masse der 5V-Spannung |
| +18V | Versorgungsspannung +18V DC |
| -18V | Versorgungsspannung -18V DC |
| +24V | Versorgungsspannung +24V DC |
| GND24 | Masse der 24V-Spannung |
| A | Loudness ein/aus von μ P |
| B | Loudness ein/aus von μ P |
| C | Defeat ein/aus |
| D | Defeat ein/aus |
| CE | Chip enable von μ P |
| CLK | Taktleitung von μ P |
| DATA | Datenleitung von μ P |
| L | linker Kanal |
| R | rechter Kanal |
| MOT+ | Potimotor + von μ P |
| MOT- | Potimotor - von μ P |
| Mute | Stummschalter von μ P |
| SPA | Relaistreiber Lautsprecher A |
| SPB | Relaistreiber Lautsprecher B |
| PD | Power down Abschaltmeldung an μ P |
| STBY | Standby Relais |
| RC | Fernsteuerung nach und von μ P |

Abbreviations of wires

(for V3 also)

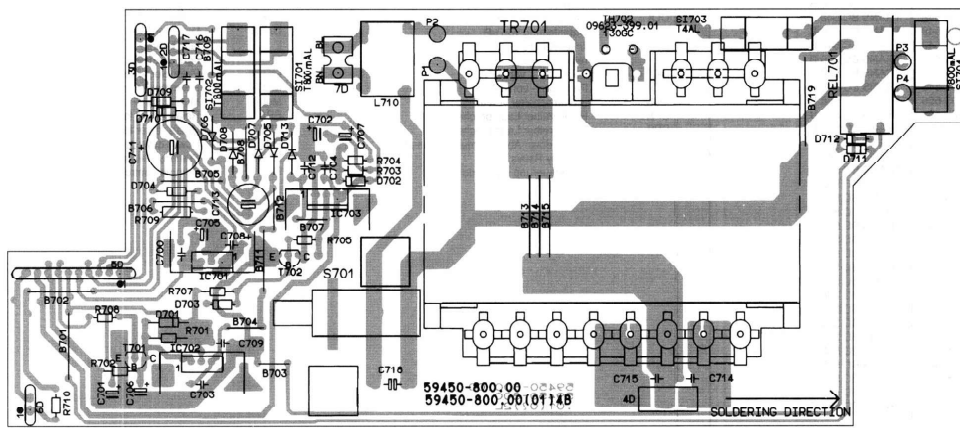
| | |
|-------|--------------------------------|
| +5V | Voltage supply +5V DC |
| GND5 | Ground of 5V voltage |
| +18V | Voltage supply +18V DC |
| -18V | Voltage supply -18V DC |
| +24V | Voltage supply +24V DC |
| GND24 | Ground of 24V voltage |
| A | Loudness on/off from μ P |
| B | Loudness on/off from μ P |
| C | Defeat on/off |
| D | Defeat on/off |
| CE | Chip enable from μ P |
| CLK | Clock from μ P |
| DATA | Data from μ P |
| L | left channel |
| R | right channel |
| MOT+ | Potimotor + from μ P |
| MOT- | Potimotor - from μ P |
| Mute | Mute from μ P |
| SPA | Relais driver loudspeaker A |
| SPB | Relais driver loudspeaker B |
| PD | Power down to μ P |
| STBY | Standby Relais |
| RC | Remote control from/to μ P |

Platinenabbildungen und Schaltpläne / Layout of the PCBs and Circuit Diagrams

- Platinenabbildungen / Layout of the PCBs:
- Netzteilplatte / Mains Unit PCB
 - Trafosplatte / Transformer PCB
 - Netzanschlußplatte / Mains Con. PCB
 - RC-Platte / RC PCB

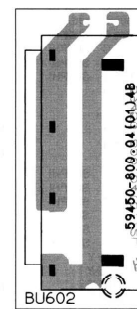
Netzteilplatte / Mains Unit PCB

Ansicht von der Bestückungsseite / View of components side



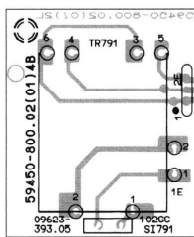
Netzanschlußplatte / Mains Con. PCB

Ansicht von der Bestückungsseite / View of components side



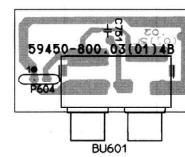
Trafosplatte / Transformer PCB

Ansicht von der Bestückungsseite / View of components side



RC-Platte / RC PCB

Ansicht von der Bestückungsseite / View of components side



**Schaltbild / Circuit Diagram: -Netzteilplatte / Mains Unit PCB
 -Trafoplatte / Transformer PCB
 -Netzanschlußplatte / Mains Con. PCB
 -RC-Platte / RC PCB**

